

## B7 Nursing analysis at 00:05 on Thursday 15 August 2019 (A level results day)

### CB.1 Placed applicants to nursing by country of domicile and age group, 2019 cycle (A level results day)

Domicile of applicant	Age group				
	17 and under	18	19	20 to 24	25 and over
England	0	4,040	1,880	3,550	6,530
Northern Ireland	0	310	160	220	260
Scotland	20	630	320	700	1,390
Wales	0	270	190	320	560
UK	30	5,250	2,550	4,790	8,750

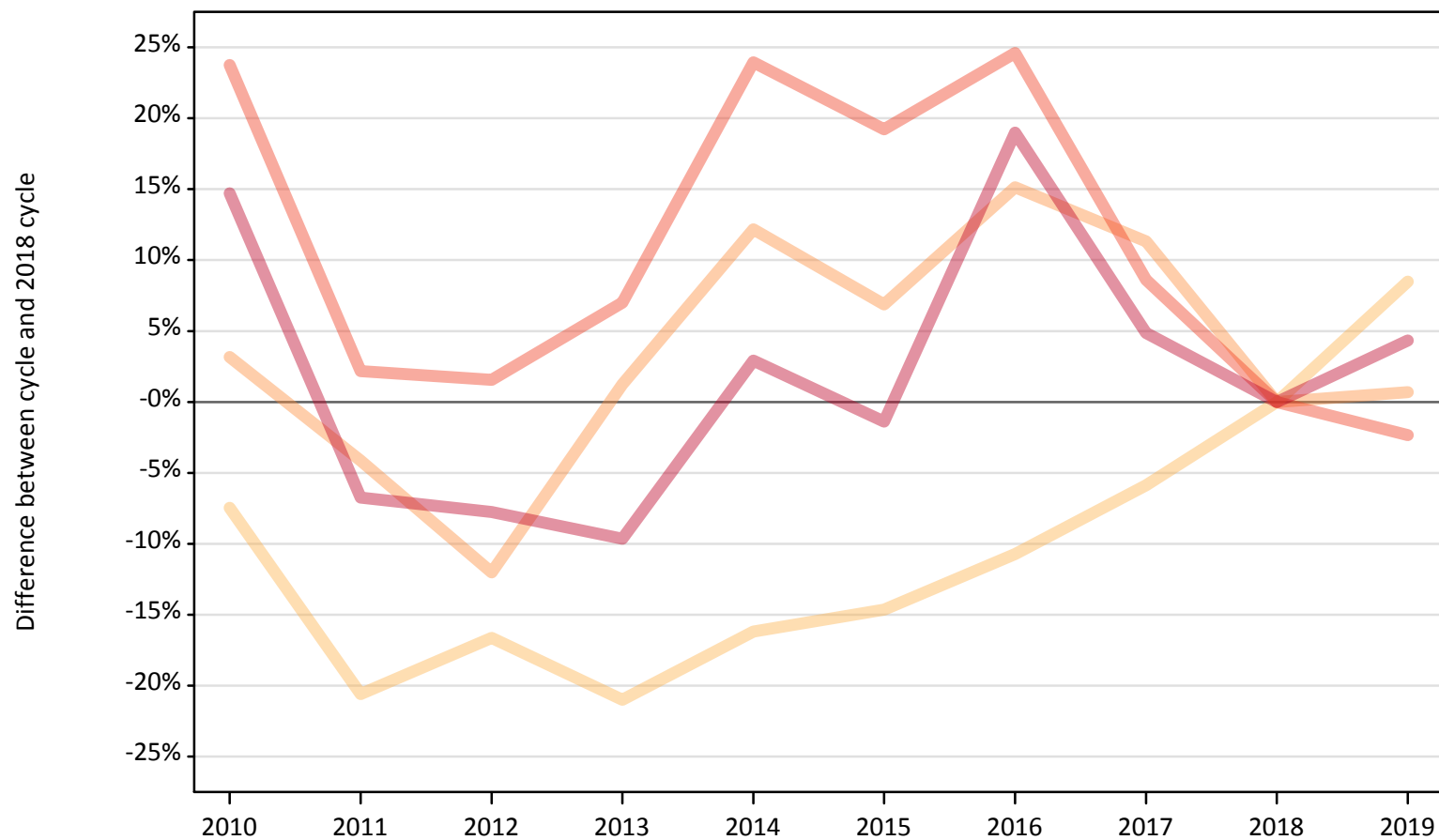
### CB.2 Proportion of 18 year old population placed to nursing by country of domicile, 2019 cycle (A level results day)

Domicile of applicant	Age group	2019
England	18	0.7%
Northern Ireland	18	1.4%
Scotland	18	1.2%
Wales	18	0.8%

### CB.3 Placed applicants to nursing from England by age group at A level results day

Selected age groups: difference between cycle and 2018 cycle

- 17 and under
- 18
- 19
- 20 to 24
- 25 and over



Note: The percentage change is not plotted in the above chart for groups with fewer than 30 placed applicants in any one cycle.

#### CB.4 Placed applicants to nursing from England by age group at A level results day

All age groups

Domicile of applicant	Age group	2010	2011	2012	2013	2014	2015	2016	2017	2018	2019
England	17 and under	70	20	0	0	10	0	0	10	0	0
	18	3,450	2,960	3,100	2,940	3,120	3,180	3,320	3,500	3,720	4,040
	19	1,920	1,790	1,640	1,890	2,090	1,990	2,150	2,080	1,860	1,880
	20 to 24	4,500	3,720	3,690	3,890	4,510	4,340	4,530	3,950	3,640	3,550
	25 and over	7,190	5,840	5,780	5,660	6,450	6,180	7,450	6,570	6,260	6,530

#### CB.5 Placed applicants to nursing from England by age group at A level results day

Selected age groups: difference between cycle and 2018 cycle

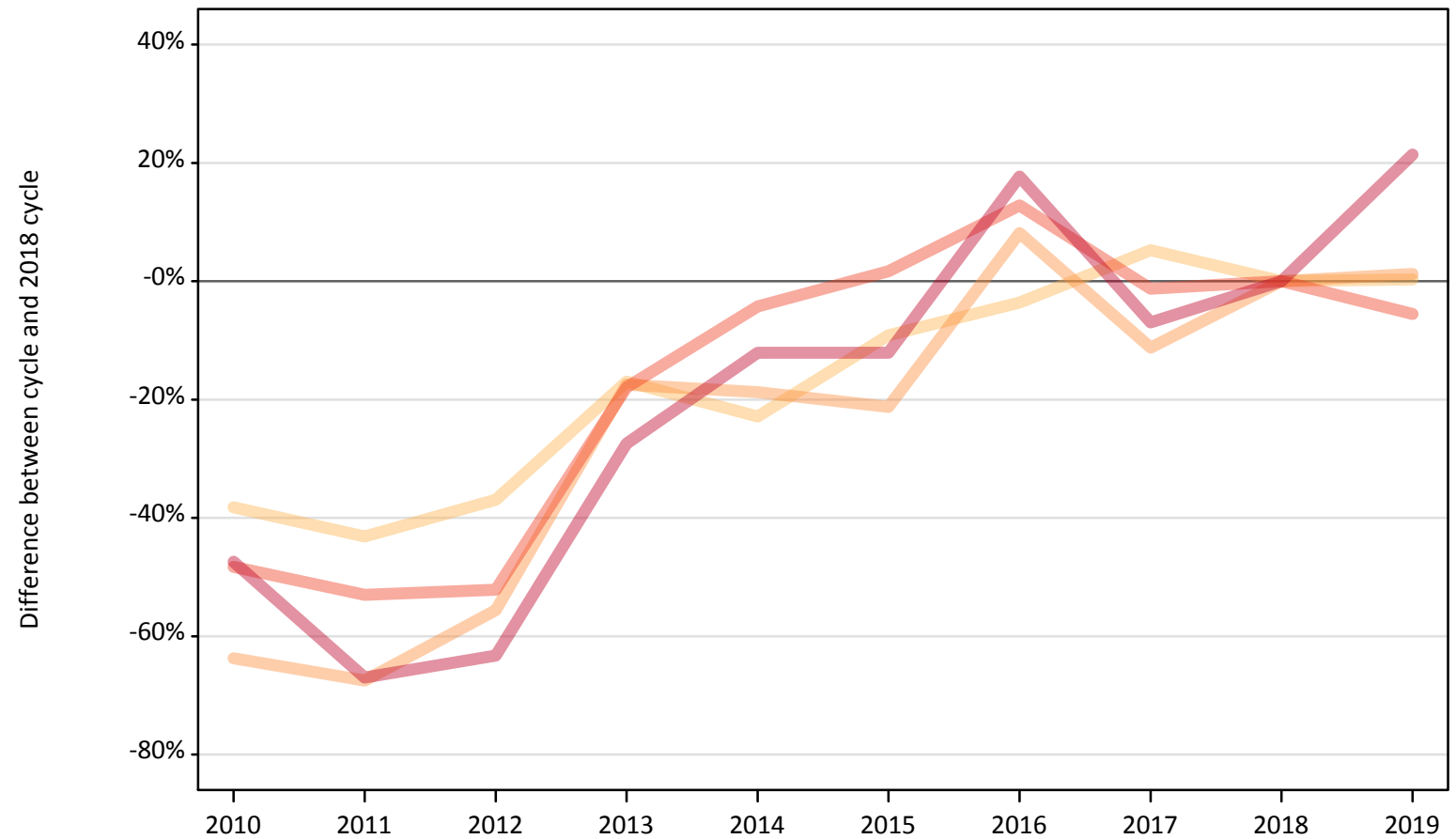
Domicile of applicant	Age group	2010	2011	2012	2013	2014	2015	2016	2017	2018	2019
England	17 and under										
	18	-7%	-21%	-17%	-21%	-16%	-15%	-11%	-6%	0%	8%
	19	3%	-4%	-12%	1%	12%	7%	15%	11%	0%	1%
	20 to 24	24%	2%	2%	7%	24%	19%	25%	9%	0%	-2%
	25 and over	15%	-7%	-8%	-10%	3%	-1%	19%	5%	0%	4%

Note: The percentage change is not recorded in the above table for groups with fewer than 10 placed applicants in that cycle or in the 2018 cycle.

## CB.6 Placed applicants to nursing from Northern Ireland by age group at A level results day

Selected age groups: difference between cycle and 2018 cycle

- 17 and under
- 18
- 19
- 20 to 24
- 25 and over



Note: The percentage change is not plotted in the above chart for groups with fewer than 30 placed applicants in any one cycle.

**CB.7 Placed applicants to nursing from Northern Ireland by age group at A level results day**

All age groups

Domicile of applicant	Age group	2010	2011	2012	2013	2014	2015	2016	2017	2018	2019
Northern Ireland	17 and under	0	0	0	0	0	0	0	0	0	0
	18	190	170	190	250	240	280	300	320	310	310
	19	60	50	70	130	130	130	170	140	160	160
	20 to 24	120	110	110	190	220	240	260	230	230	220
	25 and over	110	70	80	160	190	190	250	200	220	260

**CB.8 Placed applicants to nursing from Northern Ireland by age group at A level results day**

Selected age groups: difference between cycle and 2018 cycle

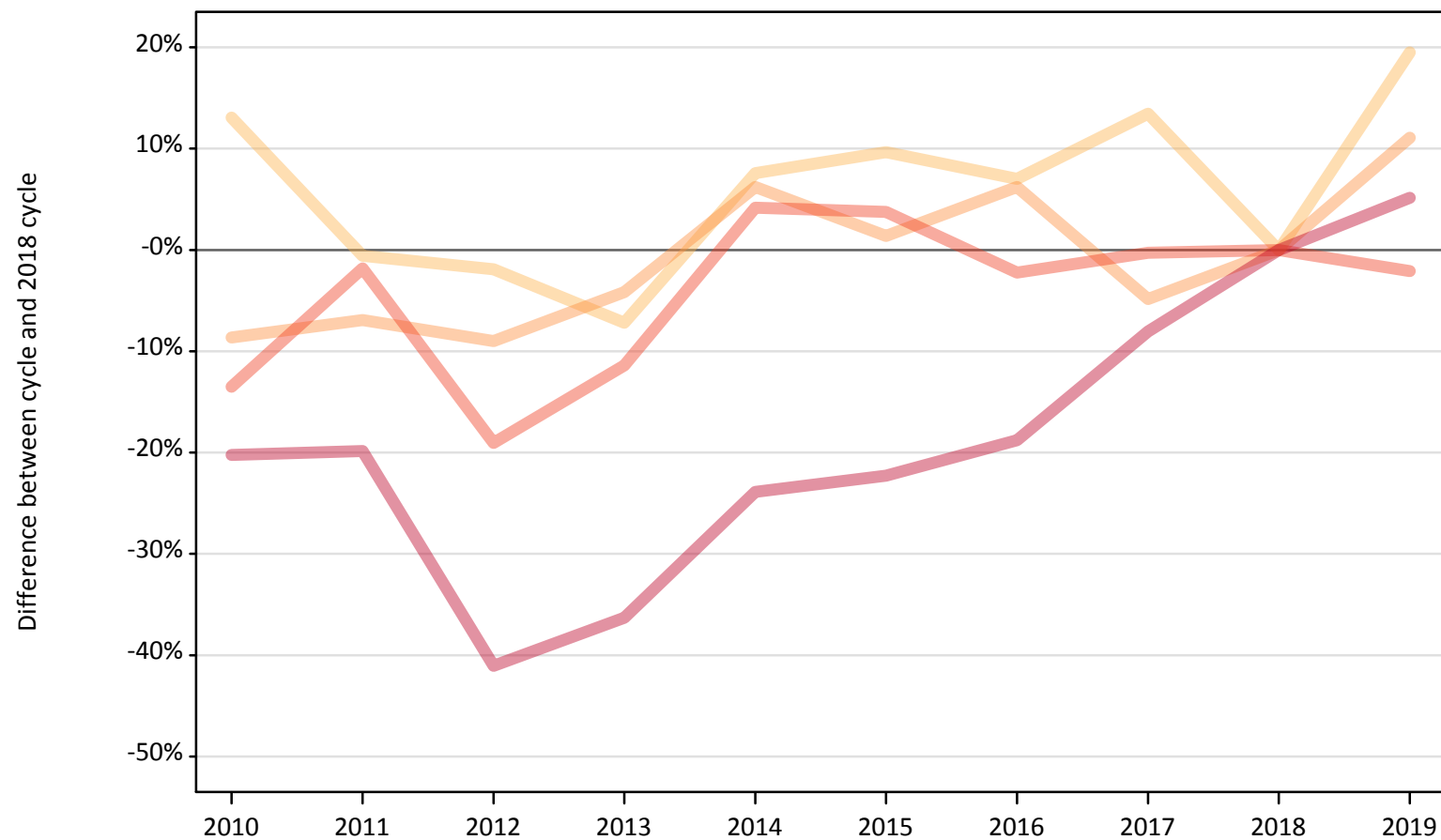
Domicile of applicant	Age group	2010	2011	2012	2013	2014	2015	2016	2017	2018	2019
Northern Ireland	17 and under										
	18	-38%	-43%	-37%	-17%	-23%	-9%	-4%	5%	0%	0%
	19	-64%	-68%	-56%	-18%	-19%	-21%	8%	-11%	0%	1%
	20 to 24	-48%	-53%	-52%	-18%	-4%	2%	13%	-1%	0%	-6%
	25 and over	-47%	-67%	-63%	-27%	-12%	-12%	18%	-7%	0%	21%

Note: The percentage change is not recorded in the above table for groups with fewer than 10 placed applicants in that cycle or in the 2018 cycle.

## CB.9 Placed applicants to nursing from Scotland by age group at A level results day

Selected age groups: difference between cycle and 2018 cycle

- 17 and under
- 18
- 19
- 20 to 24
- 25 and over



Note: The percentage change is not plotted in the above chart for groups with fewer than 30 placed applicants in any one cycle.

**CB.10 Placed applicants to nursing from Scotland by age group at A level results day**

All age groups

Domicile of applicant	Age group	2010	2011	2012	2013	2014	2015	2016	2017	2018	2019
Scotland	17 and under	40	20	20	20	20	10	20	20	20	20
	18	600	530	520	490	570	580	570	600	530	630
	19	260	270	260	280	310	290	310	280	290	320
	20 to 24	620	710	580	640	750	750	700	720	720	700
	25 and over	1,050	1,060	780	840	1,010	1,030	1,070	1,210	1,320	1,390

**CB.11 Placed applicants to nursing from Scotland by age group at A level results day**

Selected age groups: difference between cycle and 2018 cycle

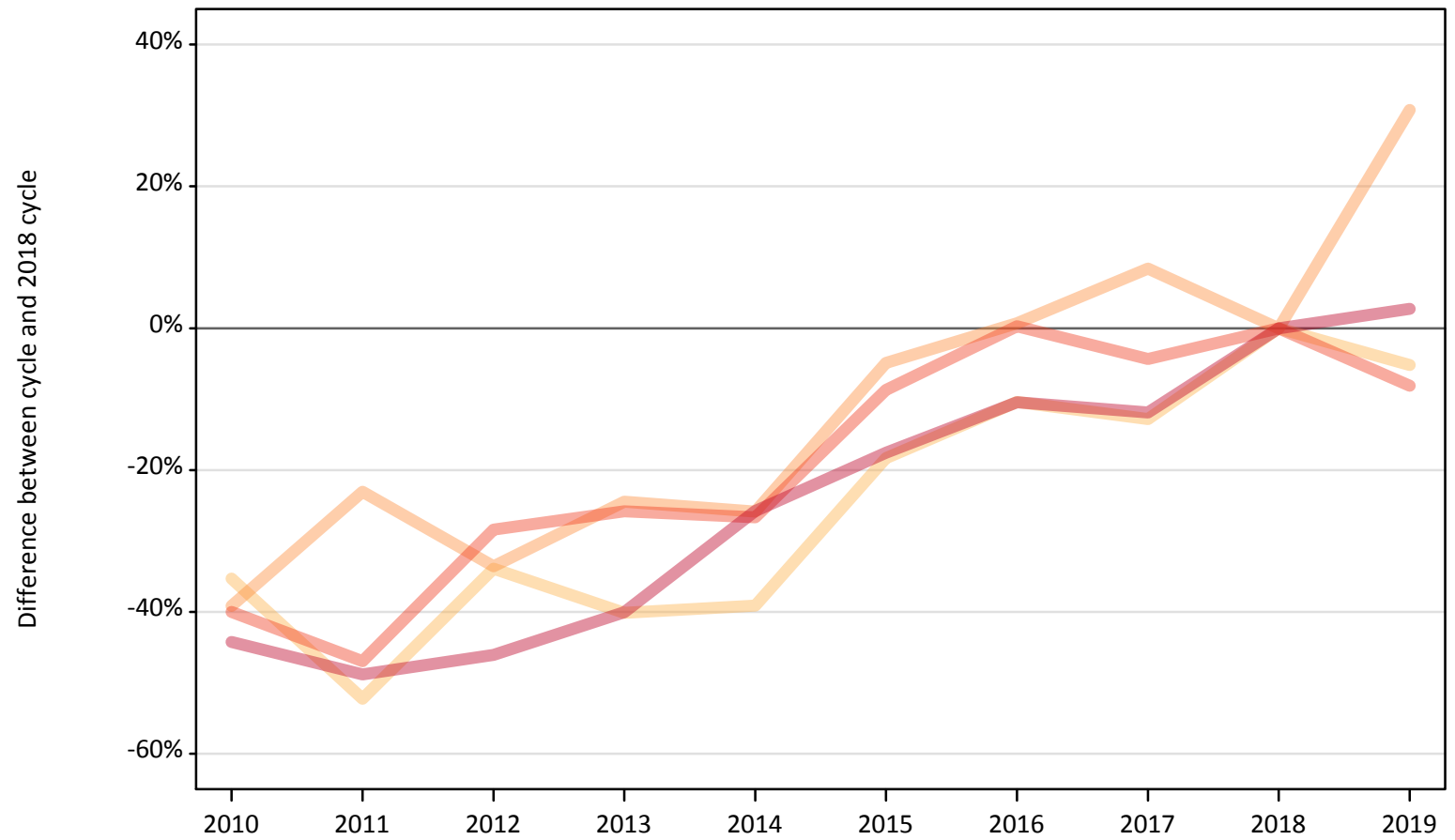
Domicile of applicant	Age group	2010	2011	2012	2013	2014	2015	2016	2017	2018	2019
Scotland	17 and under	147%	47%	33%	20%	13%	-20%	7%	27%	0%	33%
	18	13%	-1%	-2%	-7%	8%	10%	7%	13%	0%	20%
	19	-9%	-7%	-9%	-4%	6%	1%	6%	-5%	0%	11%
	20 to 24	-13%	-2%	-19%	-11%	4%	4%	-2%	-0%	0%	-2%
	25 and over	-20%	-20%	-41%	-36%	-24%	-22%	-19%	-8%	0%	5%

Note: The percentage change is not recorded in the above table for groups with fewer than 10 placed applicants in that cycle or in the 2018 cycle.

## CB.12 Placed applicants to nursing from Wales by age group at A level results day

Selected age groups: difference between cycle and 2018 cycle

- 17 and under
- 18
- 19
- 20 to 24
- 25 and over



Note: The percentage change is not plotted in the above chart for groups with fewer than 30 placed applicants in any one cycle.



**CB.13 Placed applicants to nursing from Wales by age group at A level results day**

All age groups

Domicile of applicant	Age group	2010	2011	2012	2013	2014	2015	2016	2017	2018	2019
Wales	17 and under	0	0	0	0	0	0	0	0	0	0
	18	190	140	190	170	180	240	260	250	290	270
	19	90	110	100	110	110	140	140	160	140	190
	20 to 24	210	180	250	260	250	320	350	330	350	320
	25 and over	310	280	300	330	410	450	490	480	550	560

**CB.14 Placed applicants to nursing from Wales by age group at A level results day**

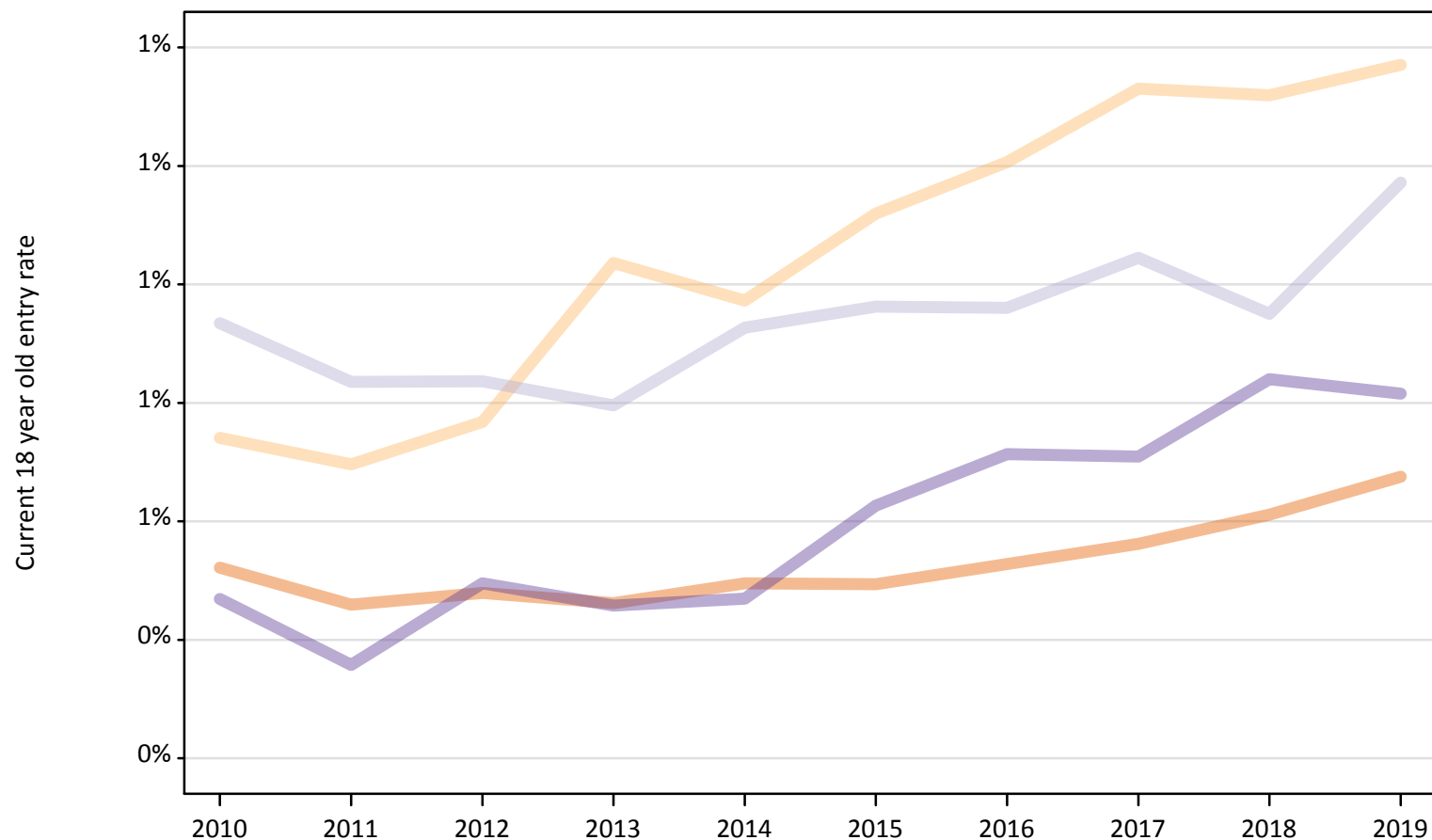
Selected age groups: difference between cycle and 2018 cycle

Domicile of applicant	Age group	2010	2011	2012	2013	2014	2015	2016	2017	2018	2019
Wales	17 and under										
	18	-35%	-52%	-34%	-40%	-39%	-18%	-10%	-13%	0%	-5%
	19	-39%	-23%	-34%	-24%	-26%	-5%	1%	8%	0%	31%
	20 to 24	-40%	-47%	-28%	-26%	-27%	-9%	0%	-4%	0%	-8%
	25 and over	-44%	-49%	-46%	-40%	-26%	-18%	-10%	-12%	0%	3%

Note: The percentage change is not recorded in the above table for groups with fewer than 10 placed applicants in that cycle or in the 2018 cycle.

### CB.15 Entry rates to nursing for 18 year olds by UK country of domicile: A level results day

Placed 18 year old applicants as a proportion of the 18 year old population



### CB.16 Entry rates to nursing for 18 year olds by UK country of domicile: A level results day

Placed 18 year old applicants as a proportion of the 18 year old population

Domicile of applicant	Age group	2010	2011	2012	2013	2014	2015	2016	2017	2018	2019
England	18	0.5%	0.5%	0.5%	0.5%	0.5%	0.5%	0.5%	0.6%	0.6%	0.7%
Northern Ireland	18	0.7%	0.7%	0.8%	1.0%	1.0%	1.1%	1.2%	1.3%	1.3%	1.4%
Scotland	18	0.9%	0.8%	0.8%	0.8%	0.9%	1.0%	1.0%	1.0%	1.0%	1.2%
Wales	18	0.5%	0.4%	0.5%	0.5%	0.5%	0.6%	0.7%	0.7%	0.8%	0.8%