

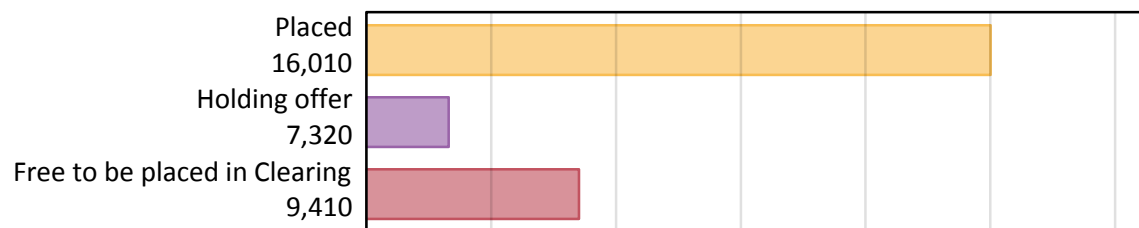
# Daily Clearing Analysis: Overview

## B7 Nursing analysis at 00:05 on Thursday 15 August 2019 (A level results day)

### AB.1 Placed applicants to nursing from England, 2019 cycle

Applicant type	Status	2019
Main scheme	Placed (Clearing)	210
	Placed (Adjustment)	0
	Placed (Firm)	14,580
	Placed (Insurance)	300
	Placed (Other)	840
	Holding offer	7,320
	Free to be placed in Clearing	9,410
Direct to Clearing	Placed (Direct to Clearing)	80
	Other (Direct to Clearing)	250
All applicants	Placed	16,010

### AB.2 Summary of nursing applicants who are placed, holding offers or free to be placed in Clearing ( England )



**AB.3 Placed applicants to nursing from England: A level results day**  
Placed applicants to nursing: difference between cycle and 2018 cycle



Note: The percentage change is not plotted in the above chart for groups with fewer than 30 placed applicants in any one cycle.

#### AB.4 Placed applicants to nursing from England: A level results day

Placed applicants to nursing: applicants at A level results day

Applicant type	Status	2010	2011	2012	2013	2014	2015	2016	2017	2018	2019
All applicants	Placed	17,130	14,320	14,220	14,380	16,170	15,680	17,460	16,100	15,490	16,010

#### AB.5 Placed applicants to nursing from England: A level results day

Placed applicants to nursing: difference between cycle and 2018 cycle

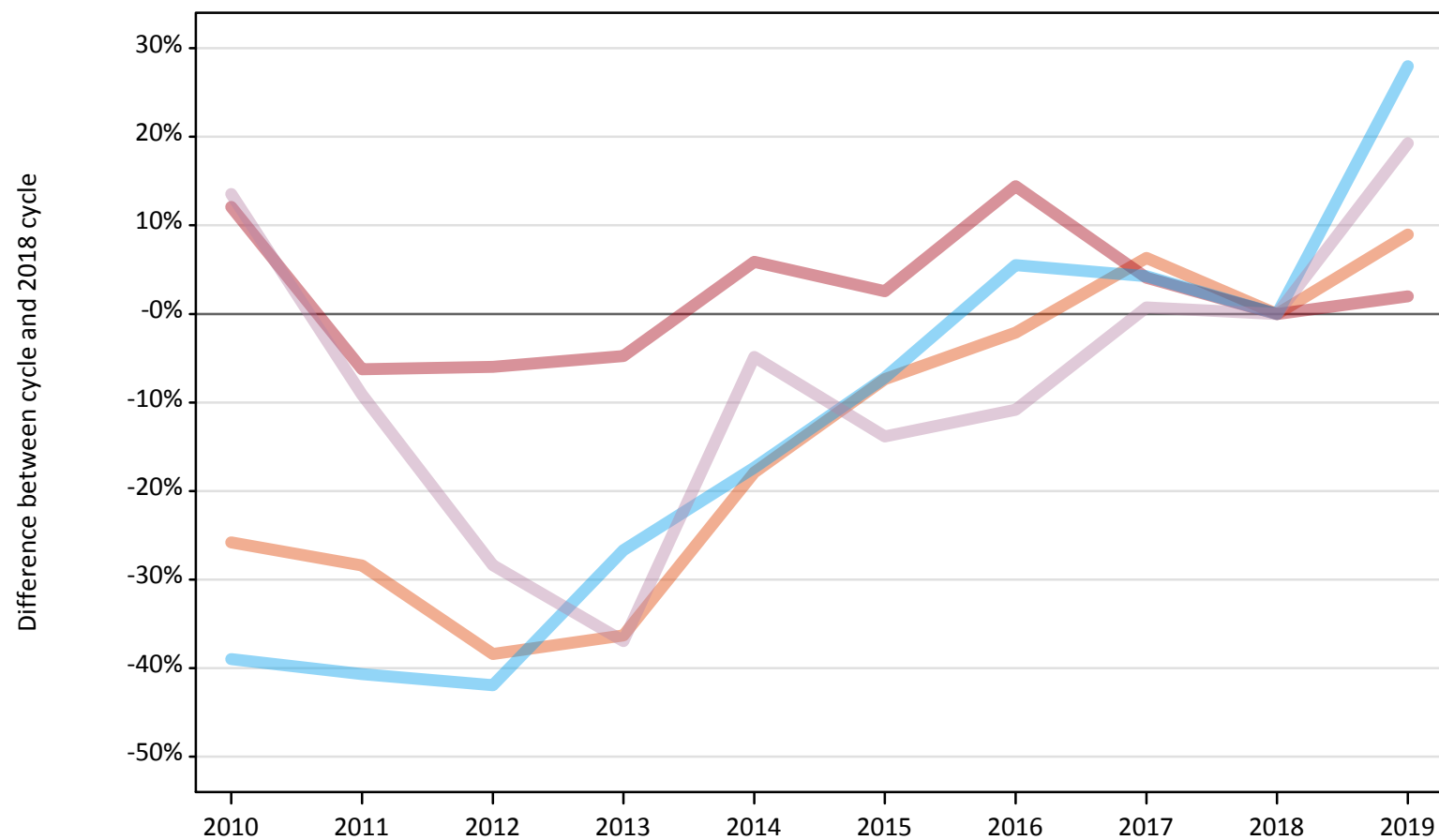
Applicant type	Status	2010	2011	2012	2013	2014	2015	2016	2017	2018	2019
All applicants	Placed	11%	-8%	-8%	-7%	4%	1%	13%	4%	0%	3%

Note: The percentage change is not recorded in the above table for groups with fewer than 10 placed applicants in that cycle or in the 2018 cycle.

## AB.6 Placed main scheme applicants to nursing from England: A level results day

All Main scheme placed routes (excluding Adjustment): difference between cycle and 2018 cycle

- Placed (Clearing)
- Placed (Firm)
- Placed (Insurance)
- Placed (Other)



Note: The percentage change is not plotted in the above chart for groups with fewer than 30 placed applicants in any one cycle.

**AB.7 Placed main scheme applicants to nursing from England: A level results day**

All Main scheme placed routes (excluding Adjustment): applicants at A level results day

Applicant type	Status	2010	2011	2012	2013	2014	2015	2016	2017	2018	2019
Main scheme	Placed (Clearing)	140	140	120	120	160	180	190	200	190	210
	Placed (Firm)	16,020	13,400	13,440	13,620	15,140	14,660	16,360	14,880	14,300	14,580
	Placed (Insurance)	140	140	140	170	200	220	250	250	240	300
	Placed (Other)	800	640	500	440	670	600	630	710	700	840

**AB.8 Placed main scheme applicants to nursing from England: A level results day**

All Main scheme placed routes (excluding Adjustment): difference between cycle and 2018 cycle

Applicant type	Status	2010	2011	2012	2013	2014	2015	2016	2017	2018	2019
Main scheme	Placed (Clearing)	-26%	-28%	-38%	-36%	-18%	-7%	-2%	6%	0%	9%
	Placed (Firm)	12%	-6%	-6%	-5%	6%	3%	14%	4%	0%	2%
	Placed (Insurance)	-39%	-41%	-42%	-27%	-17%	-7%	6%	4%	0%	28%
	Placed (Other)	14%	-9%	-28%	-37%	-5%	-14%	-11%	1%	0%	19%

Note: The percentage change is not recorded in the above table for groups with fewer than 10 placed applicants in that cycle or in the 2018 cycle.

**AB.9 Main scheme applicants placed to nursing through adjustment: A level results day**

Placed through adjustment: difference between cycle and 2018 cycle

**[This chart is not part of this report]**

**AB.10 Main scheme applicants placed to nursing through adjustment: A level results day**

Placed through adjustment: applicants at A level results day

**[Analysis on placed by adjustment available from 16 August 2019]**

**AB.11 Main scheme applicants placed to nursing through adjustment: A level results day**

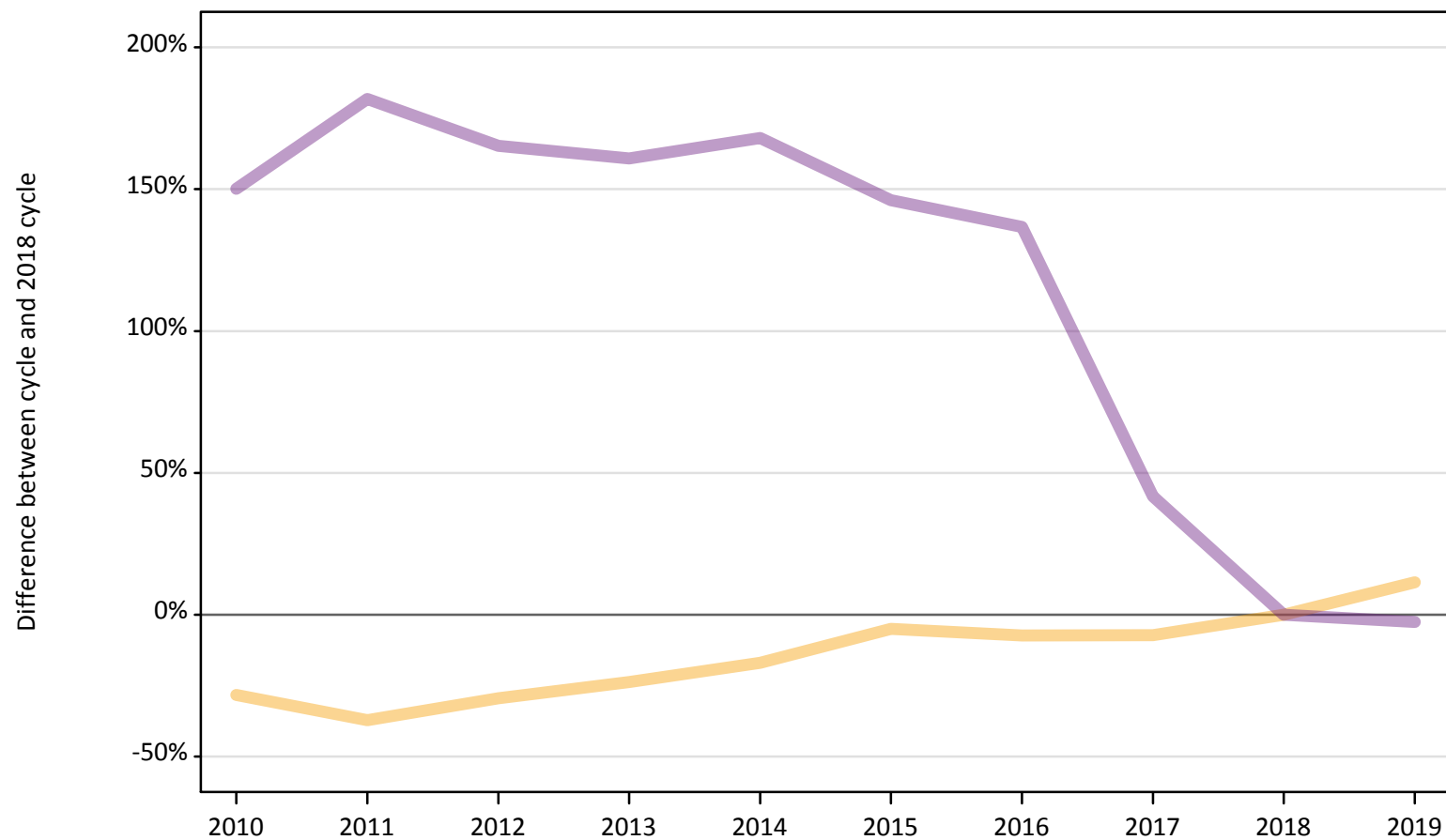
Placed through adjustment: difference between cycle and 2018 cycle

**[This table is not part of this report]**

## AB.12 Main scheme applicants to nursing not currently placed from England: A level results day

Applicants in unplaced states: difference between cycle and 2018 cycle

— Holding offer  
— Free to be placed in Clearing



Note: The percentage change is not plotted in the above chart for groups with fewer than 30 unplaced applicants in any one cycle.

**AB.13 Main scheme applicants to nursing not currently placed from England: A level results day**

Applicants in unplaced states: applicants at A level results day

Applicant type	Status	2010	2011	2012	2013	2014	2015	2016	2017	2018	2019
Main scheme	Holding offer	4,710	4,130	4,630	5,010	5,450	6,240	6,080	6,090	6,570	7,320
	Free to be placed in Clearing	24,160	27,220	25,620	25,190	25,880	23,770	22,850	13,690	9,660	9,410

**AB.14 Main scheme applicants to nursing not currently placed from England: A level results day**

Applicants in unplaced states: difference between cycle and 2018 cycle

Applicant type	Status	2010	2011	2012	2013	2014	2015	2016	2017	2018	2019
Main scheme	Holding offer	-28%	-37%	-30%	-24%	-17%	-5%	-7%	-7%	0%	11%
	Free to be placed in Clearing	150%	182%	165%	161%	168%	146%	137%	42%	0%	-3%

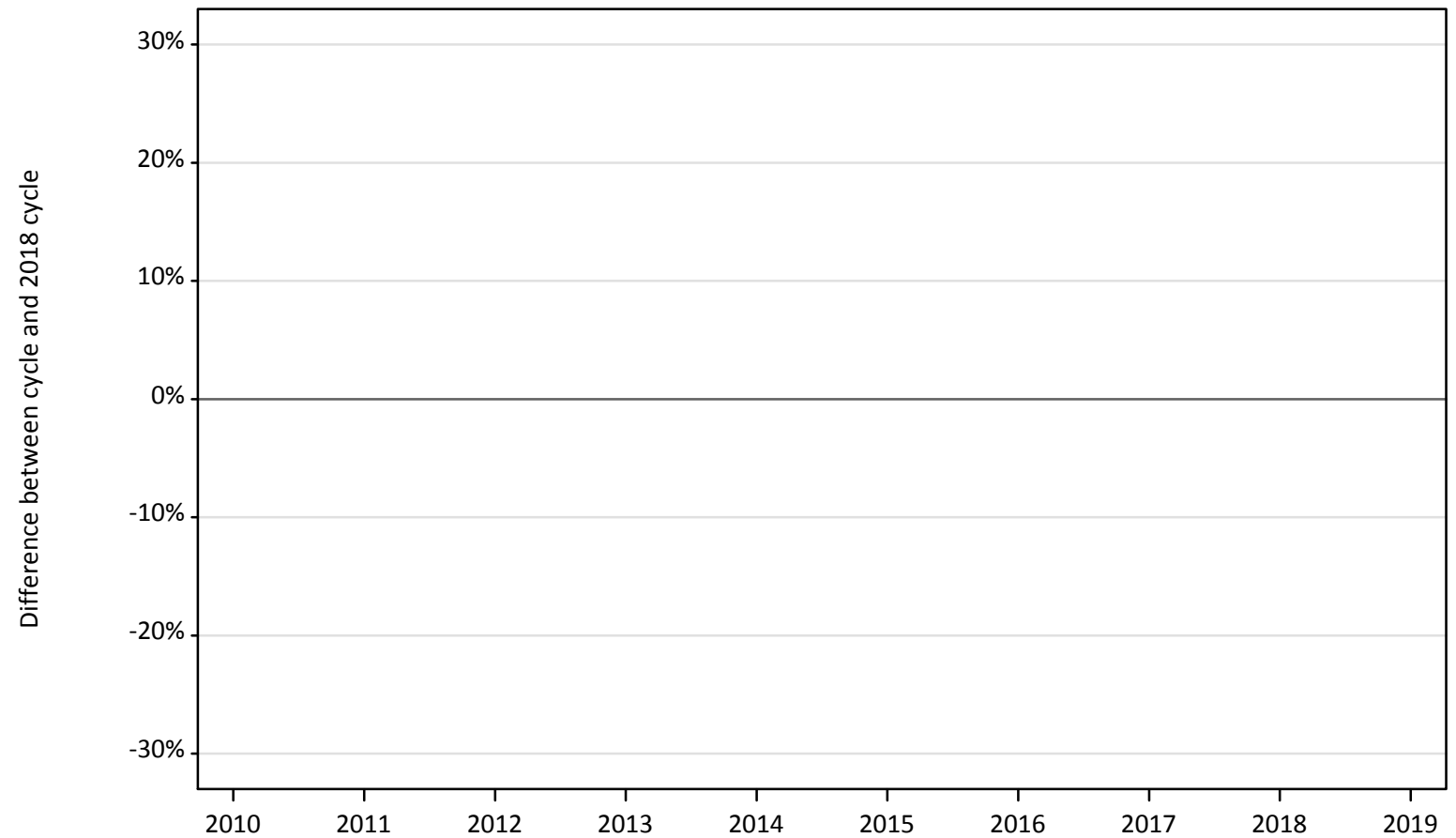
Note: The percentage change is not recorded in the above table for groups with fewer than 10 unplaced applicants in that cycle or in the 2018 cycle.



## AB.15 Direct to Clearing applicants from England: A level results day

Direct to Clearing: difference between cycle and 2018 cycle

- Placed (Direct to Clearing)
- Other (Direct to Clearing)



Note: The percentage change is not plotted in the above chart for groups with fewer than 30 placed applicants in any one cycle.

**AB.16 Direct to Clearing applicants from England: A level results day**

Direct to Clearing A level results day

Applicant type	Status	2010	2011	2012	2013	2014	2015	2016	2017	2018	2019
Direct to Clearing	Placed (Direct to Clearing)	20	10	20	30	20	20	40	70	70	80
	Other (Direct to Clearing)	30	60	60	100	80	110	130	200	210	250

**AB.17 Direct to Clearing applicants from England: A level results day**

Direct to Clearing: difference between cycle and 2018 cycle

Applicant type	Status	2010	2011	2012	2013	2014	2015	2016	2017	2018	2019
Direct to Clearing	Placed (Direct to Clearing)	-69%	-85%	-72%	-54%	-76%	-65%	-47%	-1%	0%	21%
	Other (Direct to Clearing)	-87%	-73%	-71%	-53%	-62%	-47%	-40%	-5%	0%	18%

Note: The percentage change is not recorded in the above table for groups with fewer than 10 placed applicants in that cycle or in the 2018 cycle.