

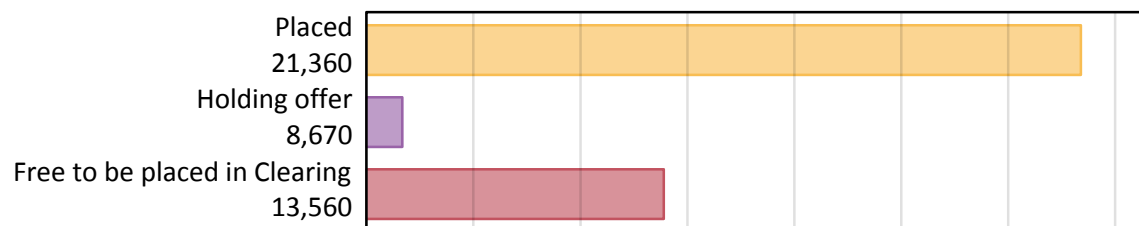
Daily Clearing Analysis: Overview

B7 Nursing analysis at 00:05 on Thursday 15 August 2019 (A level results day)

AB.1 Placed applicants to nursing from the UK, 2019 cycle

Applicant type	Status	2019
Main scheme	Placed (Clearing)	260
	Placed (Adjustment)	0
	Placed (Firm)	19,640
	Placed (Insurance)	370
	Placed (Other)	990
	Holding offer	8,670
	Free to be placed in Clearing	13,560
Direct to Clearing	Placed (Direct to Clearing)	100
	Other (Direct to Clearing)	290
All applicants	Placed	21,360

AB.2 Summary of nursing applicants who are placed, holding offers or free to be placed in Clearing (the UK)



AB.3 Placed applicants to nursing from the UK: A level results day
Placed applicants to nursing: difference between cycle and 2018 cycle



Note: The percentage change is not plotted in the above chart for groups with fewer than 30 placed applicants in any one cycle.

AB.4 Placed applicants to nursing from the UK: A level results day

Placed applicants to nursing: applicants at A level results day

Applicant type	Status	2010	2011	2012	2013	2014	2015	2016	2017	2018	2019
All applicants	Placed	20,970	18,020	17,660	18,250	20,540	20,310	22,350	21,040	20,600	21,360

AB.5 Placed applicants to nursing from the UK: A level results day

Placed applicants to nursing: difference between cycle and 2018 cycle

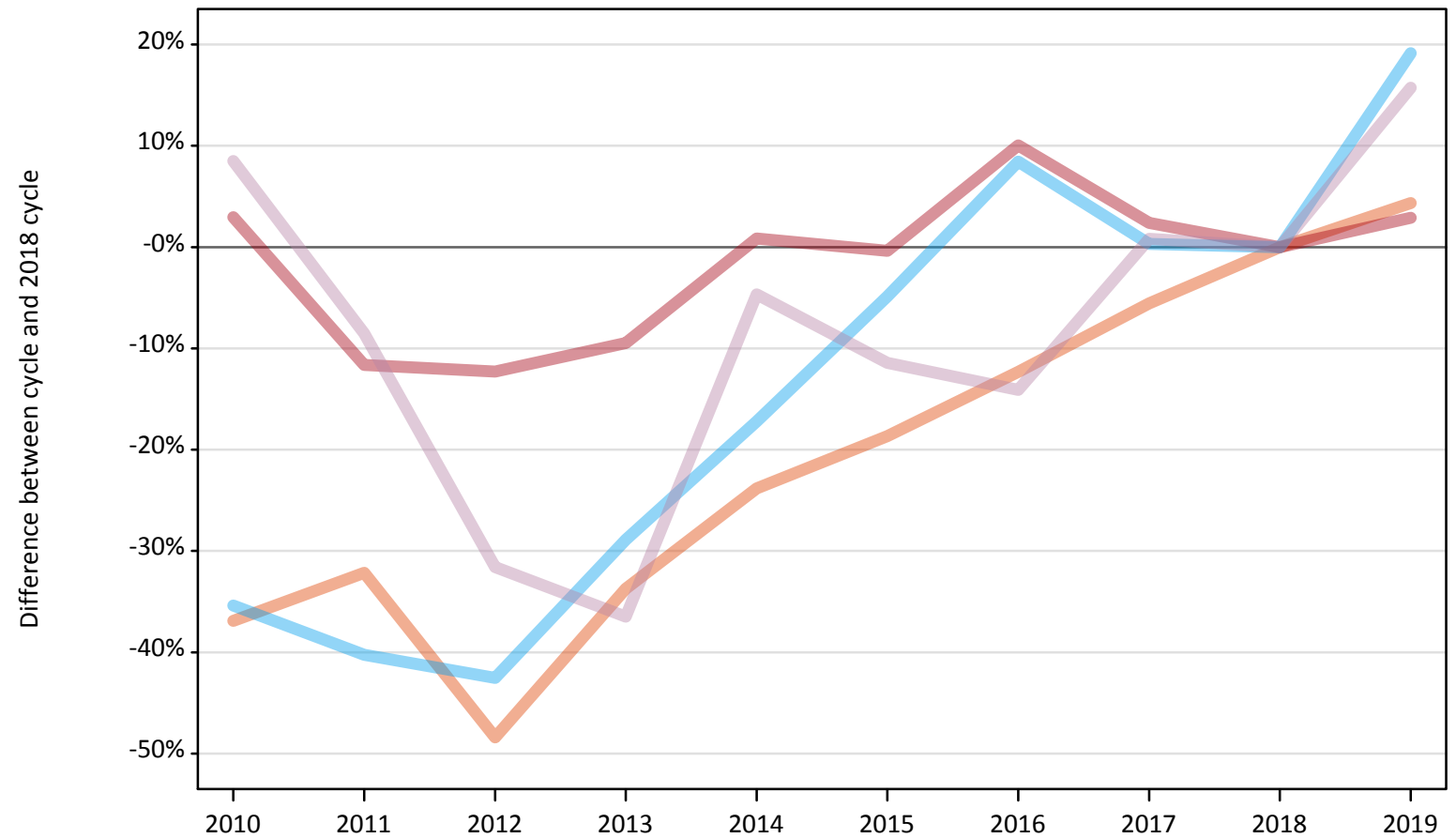
Applicant type	Status	2010	2011	2012	2013	2014	2015	2016	2017	2018	2019
All applicants	Placed	2%	-13%	-14%	-11%	-0%	-1%	8%	2%	0%	4%

Note: The percentage change is not recorded in the above table for groups with fewer than 10 placed applicants in that cycle or in the 2018 cycle.

AB.6 Placed main scheme applicants to nursing from the UK: A level results day

All Main scheme placed routes (excluding Adjustment): difference between cycle and 2018 cycle

- Placed (Clearing)
- Placed (Firm)
- Placed (Insurance)
- Placed (Other)



Note: The percentage change is not plotted in the above chart for groups with fewer than 30 placed applicants in any one cycle.

AB.7 Placed main scheme applicants to nursing from the UK: A level results day

All Main scheme placed routes (excluding Adjustment): applicants at A level results day

Applicant type	Status	2010	2011	2012	2013	2014	2015	2016	2017	2018	2019
Main scheme	Placed (Clearing)	160	170	130	170	190	210	220	240	250	260
	Placed (Firm)	19,650	16,870	16,750	17,280	19,250	19,020	21,010	19,550	19,090	19,640
	Placed (Insurance)	200	180	180	220	260	290	330	310	310	370
	Placed (Other)	930	790	590	550	820	760	740	870	860	990

AB.8 Placed main scheme applicants to nursing from the UK: A level results day

All Main scheme placed routes (excluding Adjustment): difference between cycle and 2018 cycle

Applicant type	Status	2010	2011	2012	2013	2014	2015	2016	2017	2018	2019
Main scheme	Placed (Clearing)	-37%	-32%	-48%	-34%	-24%	-19%	-12%	-6%	0%	4%
	Placed (Firm)	3%	-12%	-12%	-9%	1%	-0%	10%	2%	0%	3%
	Placed (Insurance)	-35%	-40%	-43%	-29%	-17%	-5%	8%	0%	0%	19%
	Placed (Other)	9%	-9%	-32%	-36%	-5%	-11%	-14%	1%	0%	16%

Note: The percentage change is not recorded in the above table for groups with fewer than 10 placed applicants in that cycle or in the 2018 cycle.

AB.9 Main scheme applicants placed to nursing through adjustment: A level results day

Placed through adjustment: difference between cycle and 2018 cycle

[This chart is not part of this report]

AB.10 Main scheme applicants placed to nursing through adjustment: A level results day

Placed through adjustment: applicants at A level results day

[Analysis on placed by adjustment available from 16 August 2019]

AB.11 Main scheme applicants placed to nursing through adjustment: A level results day

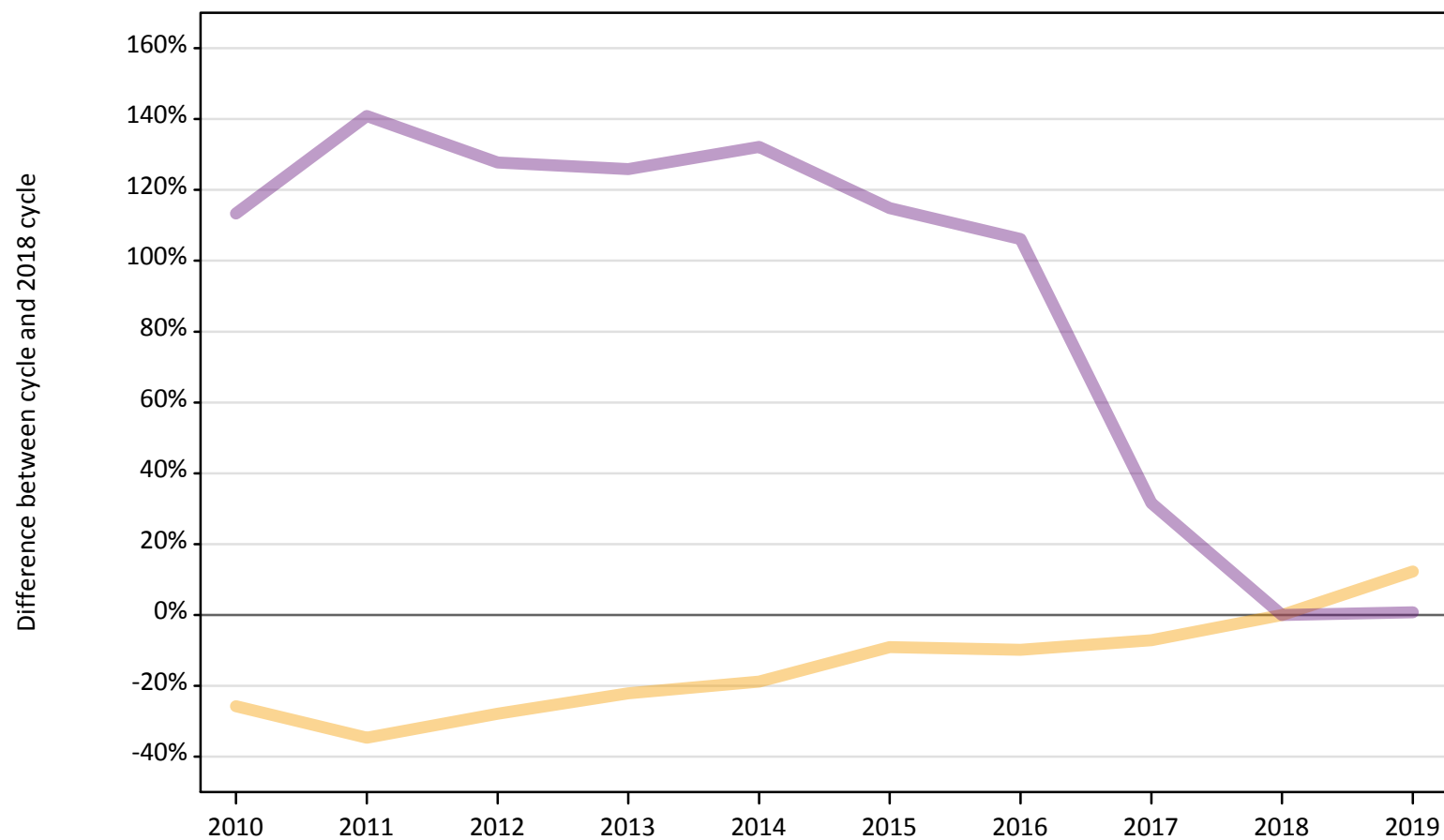
Placed through adjustment: difference between cycle and 2018 cycle

[This table is not part of this report]

AB.12 Main scheme applicants to nursing not currently placed from the UK: A level results day

Applicants in unplaced states: difference between cycle and 2018 cycle

— Holding offer
— Free to be placed in Clearing



Note: The percentage change is not plotted in the above chart for groups with fewer than 30 unplaced applicants in any one cycle.

AB.13 Main scheme applicants to nursing not currently placed from the UK: A level results day

Applicants in unplaced states: applicants at A level results day

Applicant type	Status	2010	2011	2012	2013	2014	2015	2016	2017	2018	2019
Main scheme	Holding offer	5,730	5,050	5,570	6,020	6,270	7,020	6,970	7,170	7,720	8,670
	Free to be placed in Clearing	28,710	32,420	30,650	30,390	31,240	28,910	27,740	17,710	13,460	13,560

AB.14 Main scheme applicants to nursing not currently placed from the UK: A level results day

Applicants in unplaced states: difference between cycle and 2018 cycle

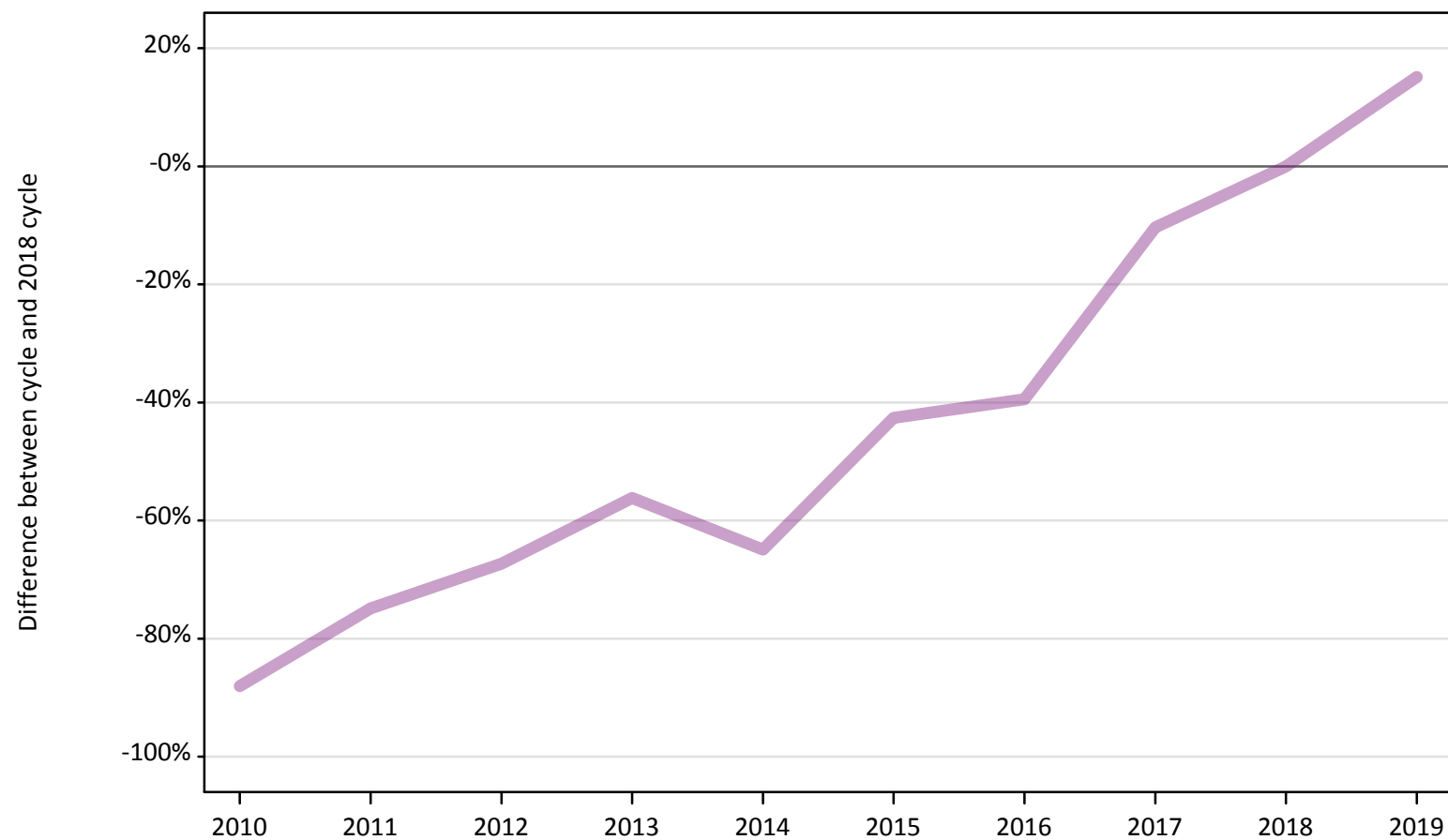
Applicant type	Status	2010	2011	2012	2013	2014	2015	2016	2017	2018	2019
Main scheme	Holding offer	-26%	-35%	-28%	-22%	-19%	-9%	-10%	-7%	0%	12%
	Free to be placed in Clearing	113%	141%	128%	126%	132%	115%	106%	32%	0%	1%

Note: The percentage change is not recorded in the above table for groups with fewer than 10 unplaced applicants in that cycle or in the 2018 cycle.

AB.15 Direct to Clearing applicants from the UK: A level results day

Direct to Clearing: difference between cycle and 2018 cycle

- Placed (Direct to Clearing)
- Other (Direct to Clearing)



Note: The percentage change is not plotted in the above chart for groups with fewer than 30 placed applicants in any one cycle.

AB.16 Direct to Clearing applicants from the UK: A level results day

Direct to Clearing A level results day

Applicant type	Status	2010	2011	2012	2013	2014	2015	2016	2017	2018	2019
Direct to Clearing	Placed (Direct to Clearing)	20	10	20	30	20	30	50	80	90	100
	Other (Direct to Clearing)	30	60	80	110	90	140	150	230	250	290

AB.17 Direct to Clearing applicants from the UK: A level results day

Direct to Clearing: difference between cycle and 2018 cycle

Applicant type	Status	2010	2011	2012	2013	2014	2015	2016	2017	2018	2019
Direct to Clearing	Placed (Direct to Clearing)	-75%	-87%	-76%	-65%	-81%	-68%	-48%	-15%	0%	4%
	Other (Direct to Clearing)	-88%	-75%	-67%	-56%	-65%	-43%	-39%	-10%	0%	15%

Note: The percentage change is not recorded in the above table for groups with fewer than 10 placed applicants in that cycle or in the 2018 cycle.