

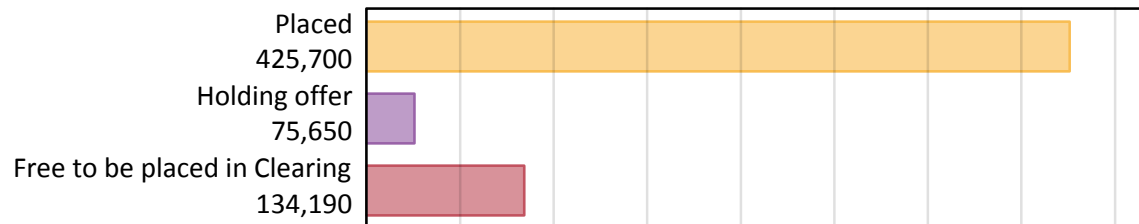
# Daily Clearing Analysis: Overview

## Analysis at 00:05 on Friday 16 August 2019 (1 day after A level results day)

### A.1 Applicants by type and status from all domiciles, 2019 cycle

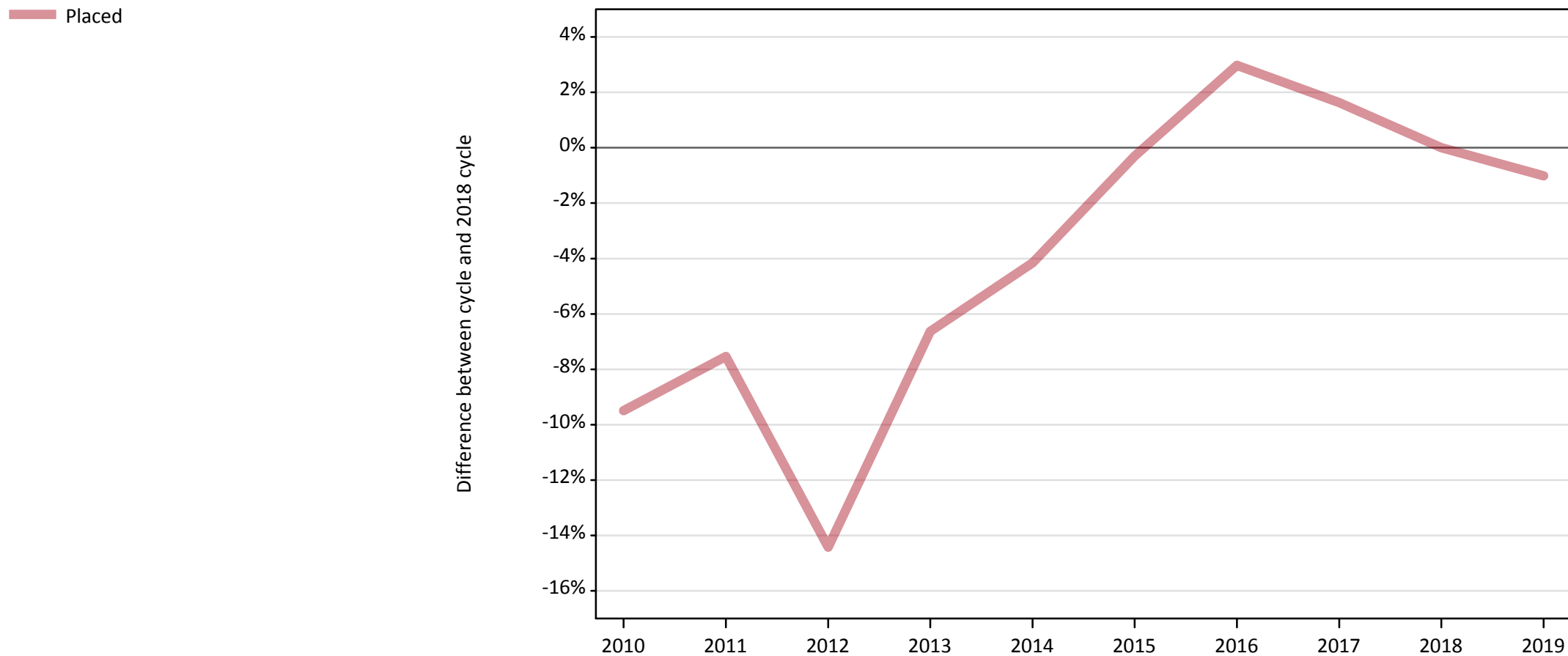
Applicant type	Status	2019
Main scheme	Placed (Clearing)	12,880
	Placed (Adjustment)	200
	Placed (Firm)	364,350
	Placed (Insurance)	31,120
	Placed (Other)	12,610
	Holding offer	75,650
	Free to be placed in Clearing	134,190
Direct to Clearing	Placed (Direct to Clearing)	4,540
	Other (Direct to Clearing)	9,670
All applicants	Placed	425,700

### A.2 Summary of applicants who are placed, holding offers or free to be placed in Clearing ( all domiciles )



### A.3 All placed applicants from all domiciles: 1 day after A level results day

All placed applicants: difference between cycle and 2018 cycle



Note: The percentage change is not plotted in the above chart for groups with fewer than 30 placed applicants in any one cycle.

#### A.4 All placed applicants from all domiciles: 1 day after A level results day

All placed applicants: applicants at 1 day after A level results day

Applicant type	Status	2010	2011	2012	2013	2014	2015	2016	2017	2018	2019
All applicants	Placed	389,240	397,660	368,020	401,540	412,170	428,760	442,870	437,070	430,060	425,700

#### A.5 All placed applicants from all domiciles: 1 day after A level results day

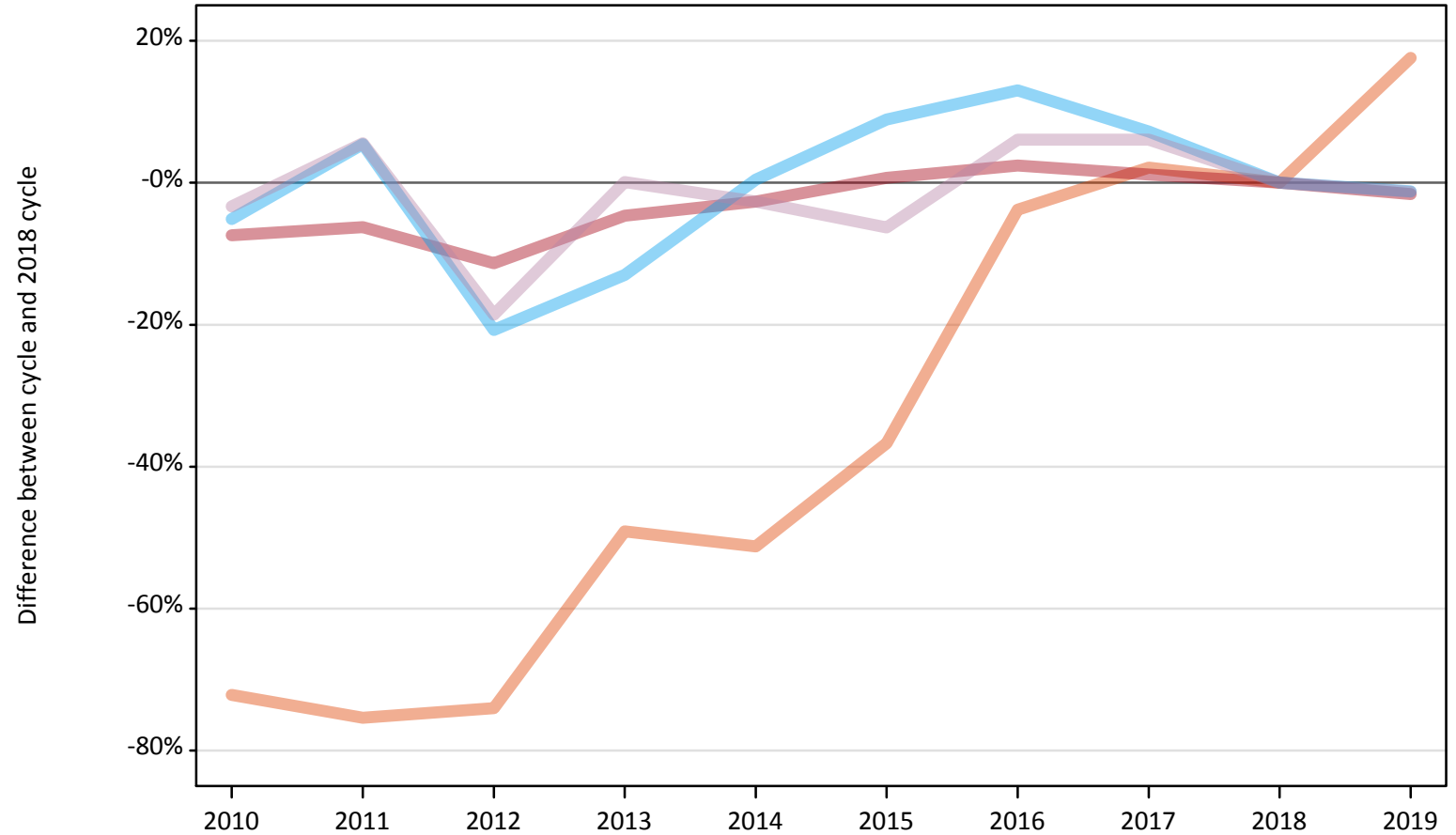
All placed applicants: difference between cycle and 2018 cycle

Applicant type	Status	2010	2011	2012	2013	2014	2015	2016	2017	2018	2019
All applicants	Placed	-9%	-8%	-14%	-7%	-4%	-0%	3%	2%	0%	-1%

Note: The percentage change is not recorded in the above table for groups with fewer than 10 placed applicants in that cycle or in the 2018 cycle.

**A.6 Placed main scheme applicants from all domiciles: 1 day after A level results day**  
All Main scheme placed routes (excluding Adjustment): difference between cycle and 2018 cycle

- Placed (Clearing)
- Placed (Firm)
- Placed (Insurance)
- Placed (Other)



Note: The percentage change is not plotted in the above chart for groups with fewer than 30 placed applicants in any one cycle.

### A.7 Placed main scheme applicants from all domiciles: 1 day after A level results day

All Main scheme placed routes (excluding Adjustment): applicants at 1 day after A level results day

Applicant type	Status	2010	2011	2012	2013	2014	2015	2016	2017	2018	2019
Main scheme	Placed (Clearing)	3,050	2,690	2,850	5,570	5,340	6,930	10,540	11,180	10,950	12,880
	Placed (Firm)	342,890	347,200	328,330	353,080	360,500	372,780	379,270	374,550	370,280	364,350
	Placed (Insurance)	29,890	33,220	24,970	27,410	31,640	34,320	35,610	33,780	31,510	31,120
	Placed (Other)	12,350	13,480	10,400	12,790	12,430	11,970	13,550	13,550	12,770	12,610

### A.8 Placed main scheme applicants from all domiciles: 1 day after A level results day

All Main scheme placed routes (excluding Adjustment): difference between cycle and 2018 cycle

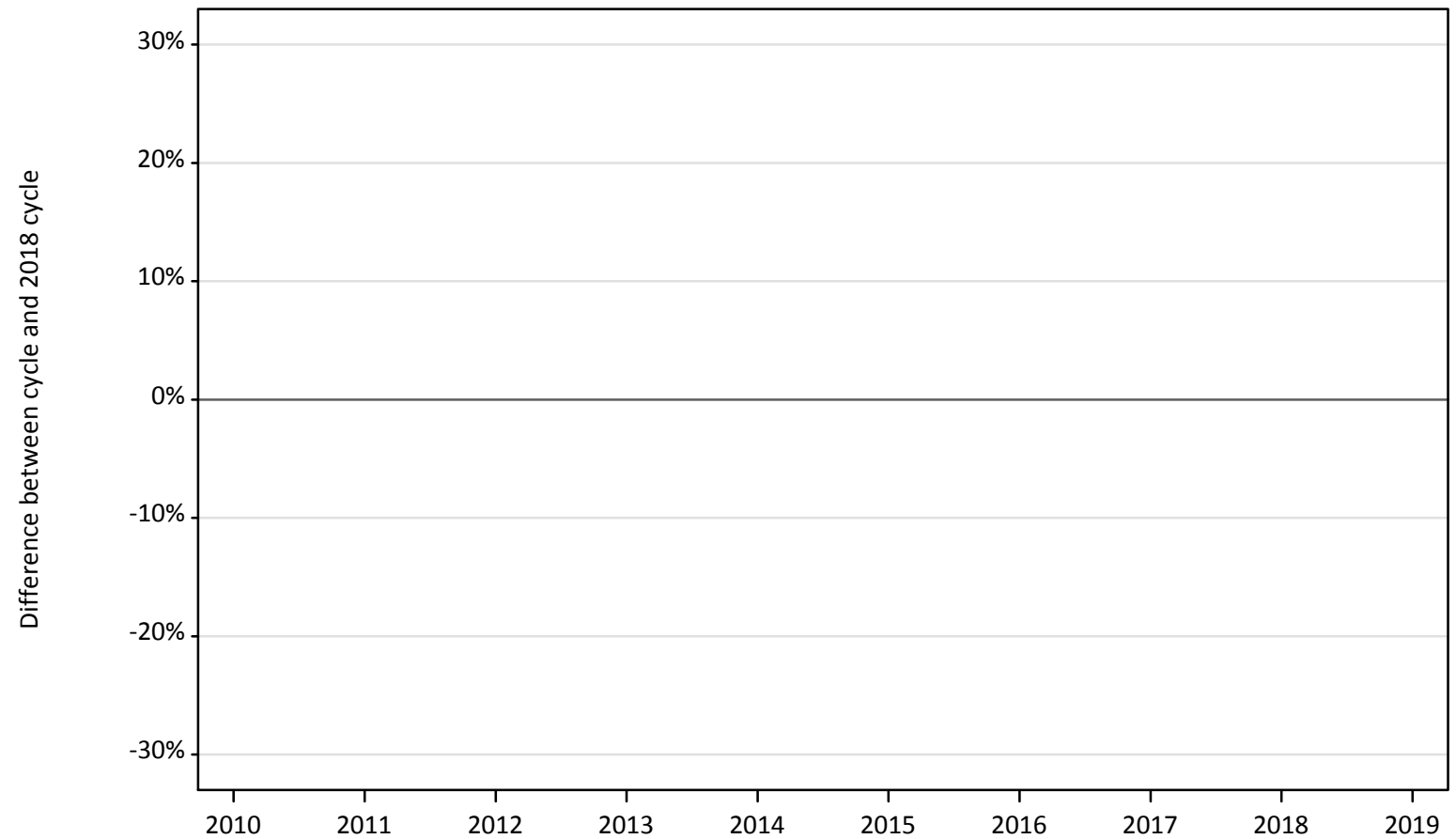
Applicant type	Status	2010	2011	2012	2013	2014	2015	2016	2017	2018	2019
Main scheme	Placed (Clearing)	-72%	-75%	-74%	-49%	-51%	-37%	-4%	2%	0%	18%
	Placed (Firm)	-7%	-6%	-11%	-5%	-3%	1%	2%	1%	0%	-2%
	Placed (Insurance)	-5%	5%	-21%	-13%	0%	9%	13%	7%	0%	-1%
	Placed (Other)	-3%	6%	-19%	0%	-3%	-6%	6%	6%	0%	-1%

Note: The percentage change is not recorded in the above table for groups with fewer than 10 placed applicants in that cycle or in the 2018 cycle.

## A.9 Main scheme applicants placed through adjustment: 1 day after A level results day

Placed through adjustment: difference between cycle and 2018 cycle

Placed (Adjustment)



Note: The percentage change is not plotted in the above chart for groups with fewer than 30 placed applicants in any one cycle.

### A.10 Main scheme applicants placed through adjustment: 1 day after A level results day

Placed through adjustment: applicants at 1 day after A level results day

Applicant type	Status	2010	2011	2012	2013	2014	2015	2016	2017	2018	2019
Main scheme	Placed (Adjustment)	20	60	140	300	320	390	290	390	350	200

### A.11 Main scheme applicants placed through adjustment: 1 day after A level results day

Placed through adjustment: difference between cycle and 2018 cycle

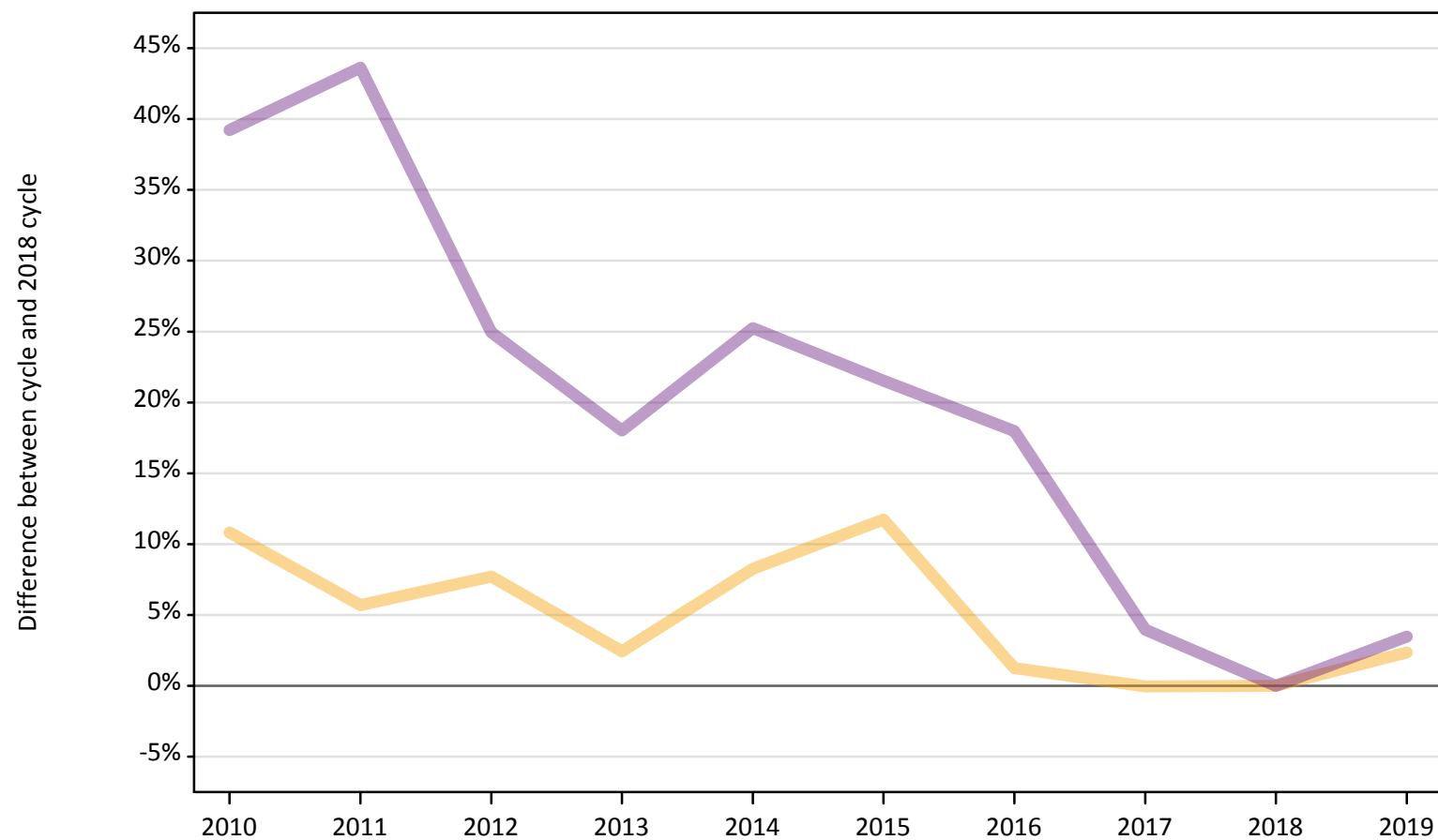
Applicant type	Status	2010	2011	2012	2013	2014	2015	2016	2017	2018	2019
Main scheme	Placed (Adjustment)	-93%	-83%	-60%	-13%	-9%	12%	-17%	12%	0%	-41%

Note: The percentage change is not recorded in the above table for groups with fewer than 10 placed applicants in that cycle or in the 2018 cycle.

## A.12 Main scheme applicants not currently placed from all domiciles: 1 day after A level results day

Applicants in unplaced states: difference between cycle and 2018 cycle

— Holding offer  
— Free to be placed in Clearing



Note: The percentage change is not plotted in the above chart for groups with fewer than 30 unplaced applicants in any one cycle.



### A.13 Main scheme applicants not currently placed from all domiciles: 1 day after A level results day

Applicants in unplaced states: applicants at 1 day after A level results day

Applicant type	Status	2010	2011	2012	2013	2014	2015	2016	2017	2018	2019
Main scheme	Holding offer	81,910	78,140	79,620	75,710	80,030	82,600	74,850	73,890	73,920	75,650
	Free to be placed in Clearing	180,570	186,270	162,040	153,070	162,430	157,640	153,010	134,840	129,700	134,190

### A.14 Main scheme applicants not currently placed from all domiciles: 1 day after A level results day

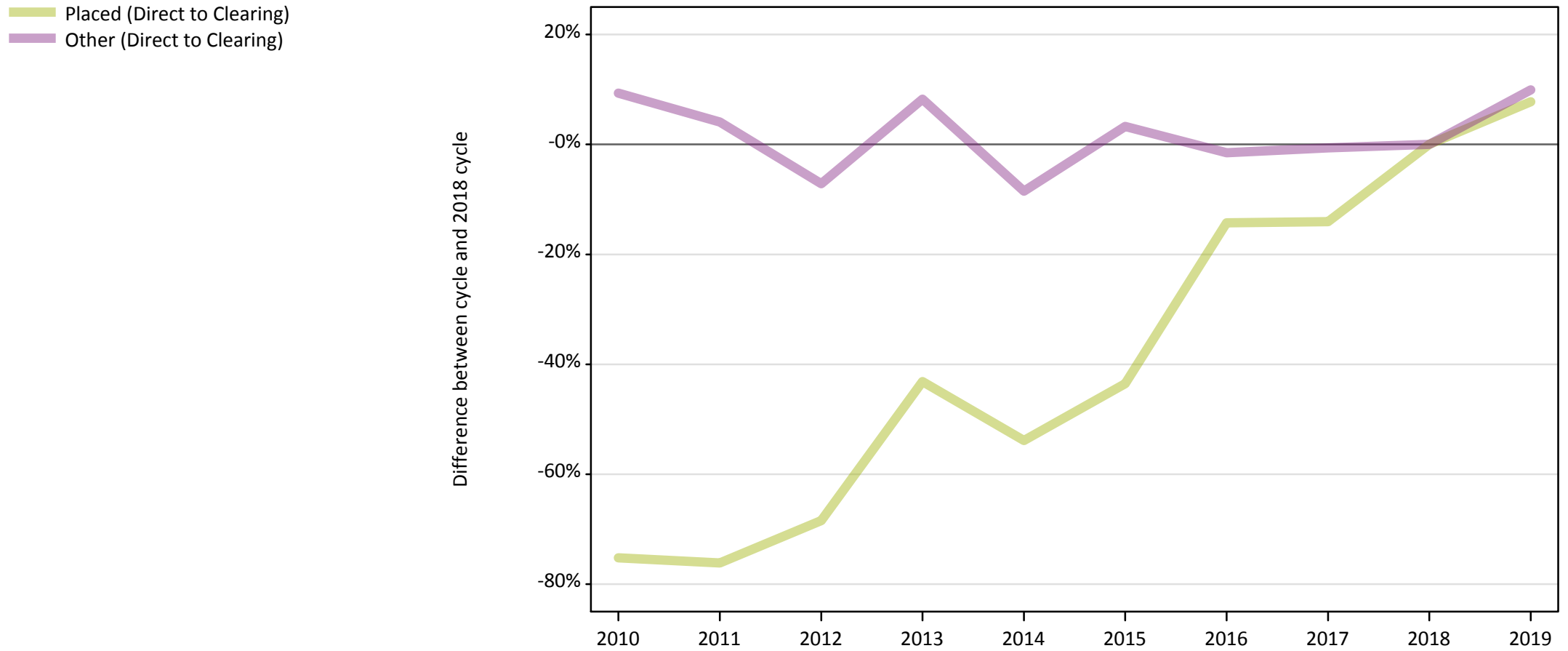
Applicants in unplaced states: difference between cycle and 2018 cycle

Applicant type	Status	2010	2011	2012	2013	2014	2015	2016	2017	2018	2019
Main scheme	Holding offer	11%	6%	8%	2%	8%	12%	1%	-0%	0%	2%
	Free to be placed in Clearing	39%	44%	25%	18%	25%	22%	18%	4%	0%	3%

Note: The percentage change is not recorded in the above table for groups with fewer than 10 unplaced applicants in that cycle or in the 2018 cycle.

### A.15 Direct to Clearing applicants from all domiciles: 1 day after A level results day

Direct to Clearing: difference between cycle and 2018 cycle



Note: The percentage change is not plotted in the above chart for groups with fewer than 30 placed applicants in any one cycle.

**A.16 Direct to Clearing applicants from all domiciles: 1 day after A level results day**

Direct to Clearing 1 day after A level results day

Applicant type	Status	2010	2011	2012	2013	2014	2015	2016	2017	2018	2019
Direct to Clearing	Placed (Direct to Clearing)	1,040	1,000	1,330	2,400	1,940	2,380	3,610	3,620	4,210	4,540
	Other (Direct to Clearing)	9,610	9,150	8,170	9,520	8,040	9,080	8,660	8,740	8,790	9,670

**A.17 Direct to Clearing applicants from all domiciles: 1 day after A level results day**

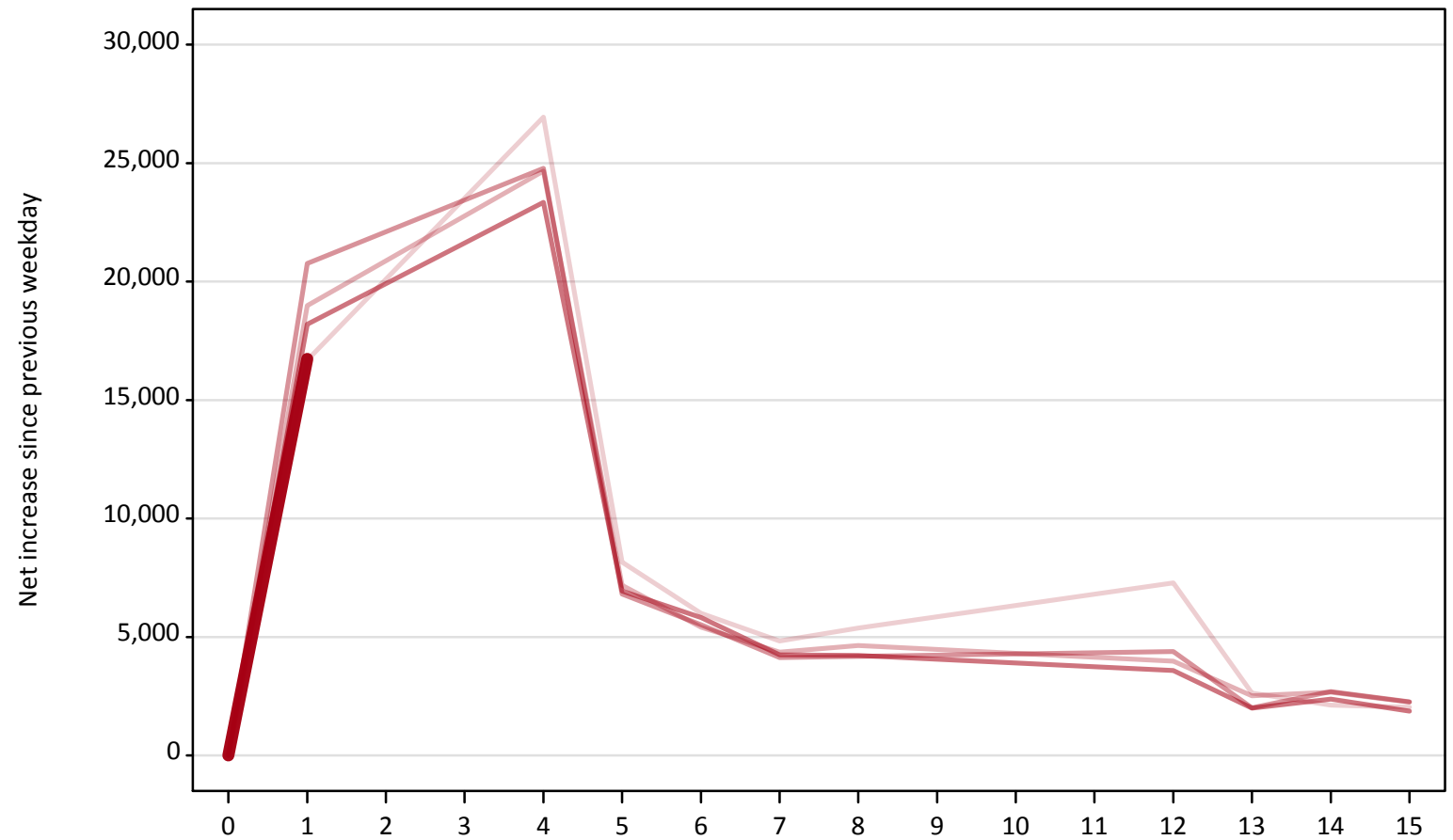
Direct to Clearing: difference between cycle and 2018 cycle

Applicant type	Status	2010	2011	2012	2013	2014	2015	2016	2017	2018	2019
Direct to Clearing	Placed (Direct to Clearing)	-75%	-76%	-68%	-43%	-54%	-44%	-14%	-14%	0%	8%
	Other (Direct to Clearing)	9%	4%	-7%	8%	-9%	3%	-2%	-1%	0%	10%

Note: The percentage change is not recorded in the above table for groups with fewer than 10 placed applicants in that cycle or in the 2018 cycle.

**A.18 All Placed: Daily net change (from all domiciles)**  
Net increase since previous weekday (2019 cycle up to 1 day after A level results day)

- 2015
- 2016
- 2017
- 2018
- 2019**

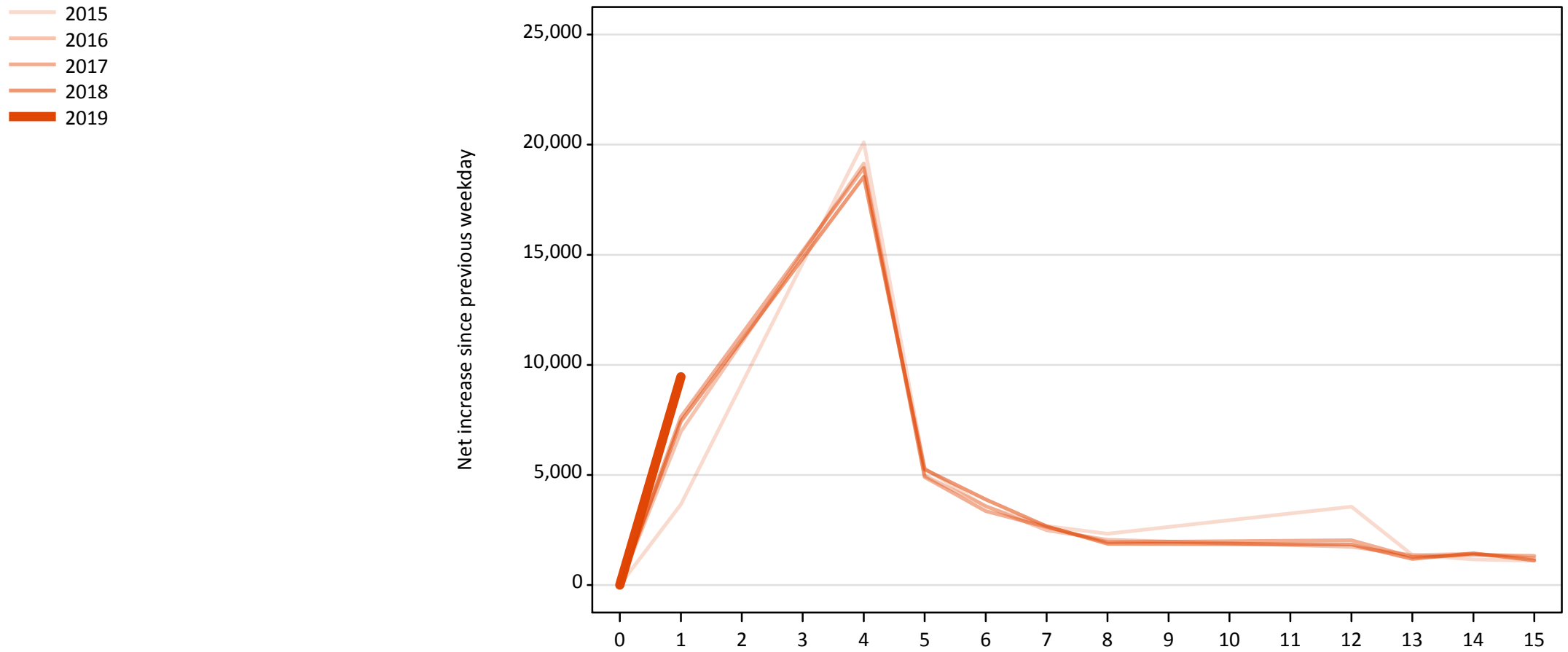


**A.19 All Placed: Daily net change (from all domiciles)**

Net increase since previous weekday (2019 cycle up to 1 day after A level results day)

Applicant status, days since A level results day		2015	2016	2017	2018	2019
All Placed	0	0	0	0	0	0
	1	16,680	18,990	20,770	18,200	16,740
	4	26,940	24,670	24,790	23,340	
	5	8,160	7,170	6,810	6,940	
	6	6,000	5,410	5,510	5,820	
	7	4,830	4,350	4,140	4,240	
	8	5,370	4,640	4,190	4,220	
	12	7,280	3,980	4,380	3,590	
	13	2,630	2,510	2,010	2,000	
	14	2,120	2,660	2,700	2,370	
	15	2,030	2,250	2,260	1,870	

**A.20 Placed through Clearing only: Daily net change (from all domiciles)**  
Net increase since previous weekday (2019 cycle up to 1 day after A level results day)



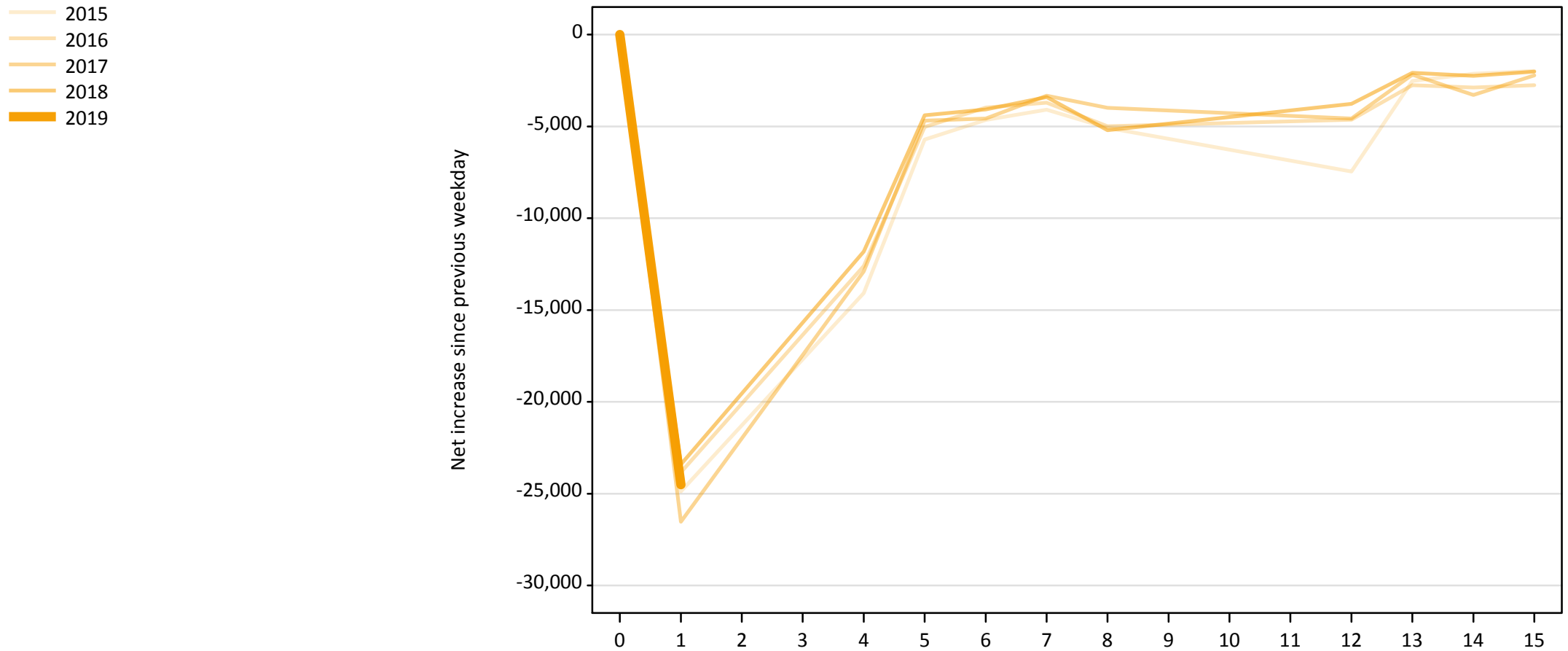
**A.21 Placed through Clearing only: Daily net change (from all domiciles)**

Net increase since previous weekday (2019 cycle up to 1 day after A level results day)

Applicant status, days since A level results day		2015	2016	2017	2018	2019
Placed through Clearing only	0	0	0	0	0	0
	1	3,660	6,970	7,640	7,440	9,460
	4	20,110	19,140	18,940	18,550	
	5	5,290	4,960	4,910	5,250	
	6	3,560	3,590	3,360	3,890	
	7	2,680	2,480	2,640	2,660	
	8	2,330	2,050	1,950	1,880	
	12	3,550	1,740	2,030	1,840	
	13	1,370	1,350	1,270	1,190	
	14	1,160	1,420	1,370	1,440	
	15	1,100	1,210	1,320	1,130	

### A.22 Holding Offer: Daily net change (from all domiciles)

Net increase since previous weekday (2019 cycle up to 1 day after A level results day)



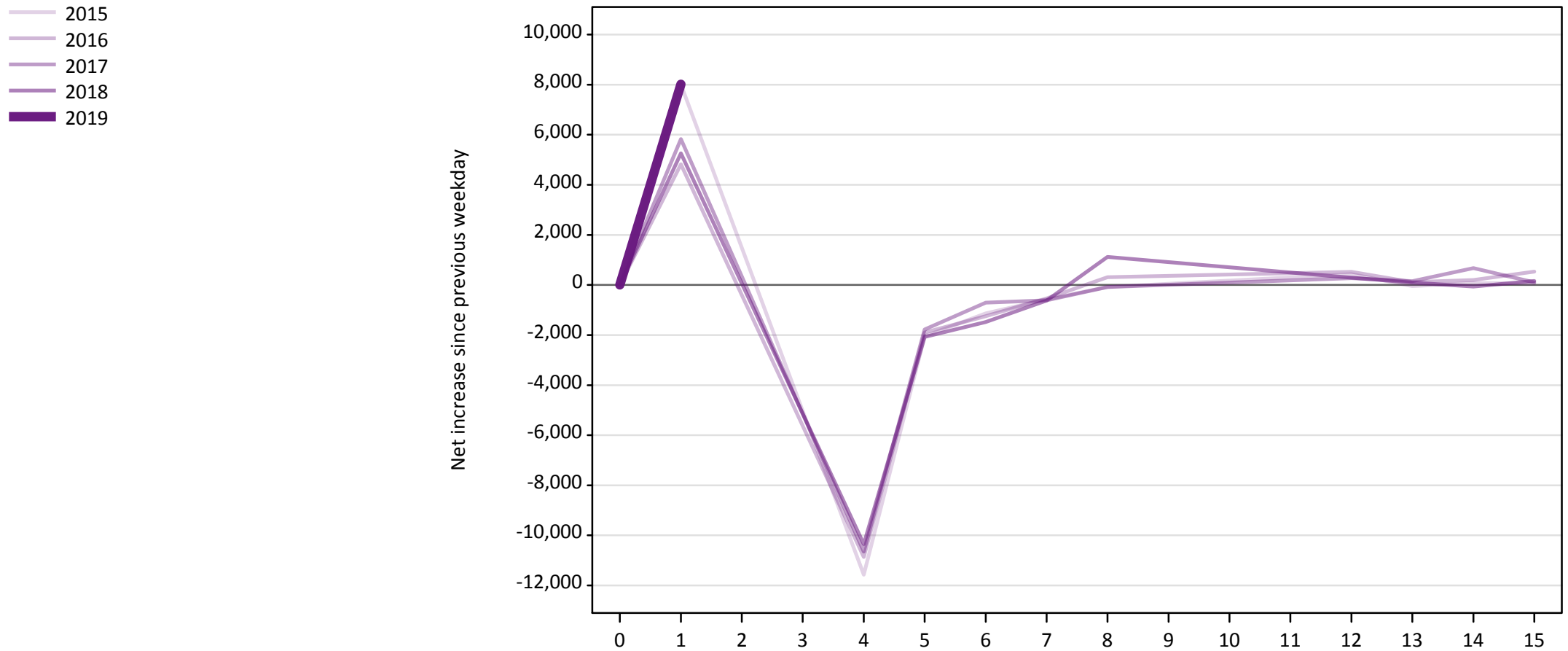


### A.23 Holding Offer: Daily net change (from all domiciles)

Net increase since previous weekday (2019 cycle up to 1 day after A level results day)

Applicant status, days since A level results day		2015	2016	2017	2018	2019
Holding Offer	0	0	0	0	0	0
	1	-24,880	-23,840	-26,530	-23,410	-24,510
	4	-14,080	-12,600	-12,900	-11,810	
	5	-5,720	-5,030	-4,680	-4,390	
	6	-4,650	-3,970	-4,580	-4,080	
	7	-4,090	-3,700	-3,330	-3,400	
	8	-5,080	-4,990	-3,990	-5,210	
	12	-7,460	-4,640	-4,580	-3,770	
	13	-2,520	-2,760	-2,180	-2,080	
	14	-2,130	-2,880	-3,280	-2,250	
	15	-1,980	-2,760	-2,230	-2,020	

**A.24 Free to be placed in Clearing: Daily net change (from all domiciles)**  
Net increase since previous weekday (2019 cycle up to 1 day after A level results day)



**A.25 Free to be placed in Clearing: Daily net change (from all domiciles)**

Net increase since previous weekday (2019 cycle up to 1 day after A level results day)

Applicant status, days since A level results day		2015	2016	2017	2018	2019
Free to be placed in Clearing	0	0	0	0	0	0
	1	8,010	4,820	5,830	5,260	8,020
	4	-11,570	-10,870	-10,650	-10,350	
	5	-2,040	-1,900	-1,780	-2,080	
	6	-1,130	-1,250	-710	-1,480	
	7	-570	-540	-610	-620	
	8	-80	310	-80	1,120	
	12	430	530	280	290	
	13	-40	120	150	90	
	14	80	200	680	-60	
	15	60	530	100	160	