

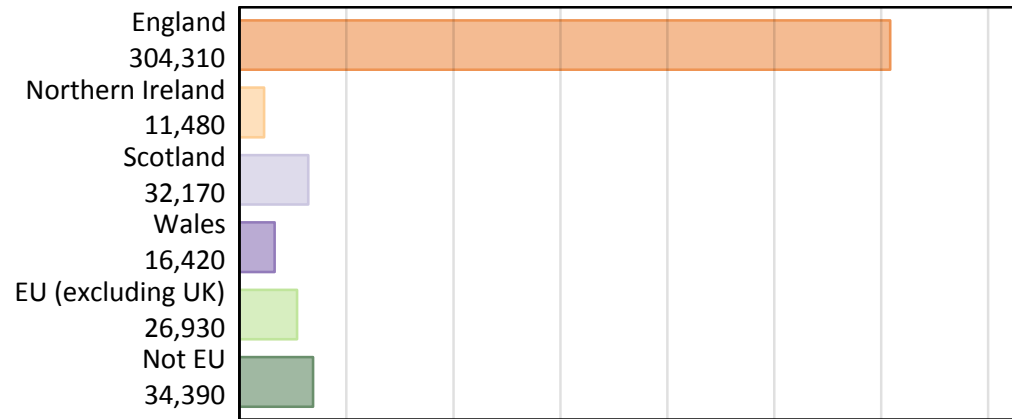
# Daily Clearing Analysis: Country

Analysis at 00:05 on Friday 16 August 2019 (1 day after A level results day)

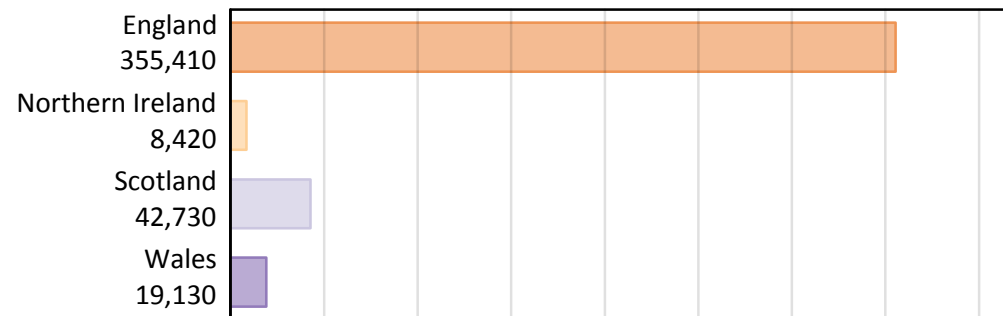
## B.1 Placed applicants by country of provider and domicile, 2019 cycle

Domicile of applicant	Country of provider				
	England	Northern Ireland	Scotland	Wales	UK
England	291,940	230	4,100	8,040	304,310
Northern Ireland	2,920	7,590	850	120	11,480
Scotland	1,370	20	30,760	20	32,170
Wales	7,200	10	120	9,090	16,420
EU (excluding UK)	21,910	360	3,750	910	26,930
Not EU	30,070	210	3,160	950	34,390
All	355,410	8,420	42,730	19,130	425,700

## B.2 Placed applicants by domicile group



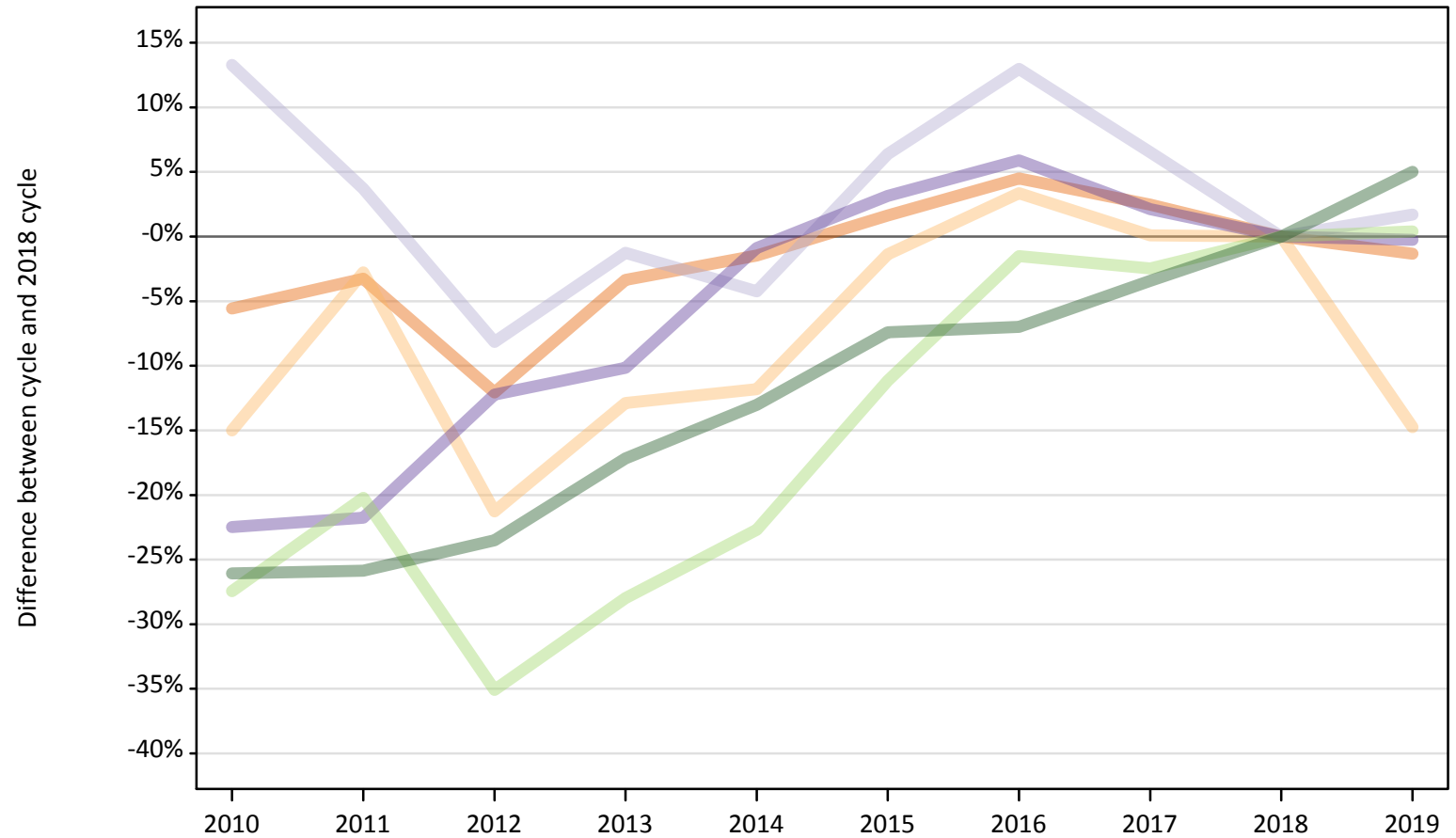
## B.3 Placed applicants by country of provider



### B.4 Placed applicants at 1 day after A level results day: providers in England

Selected applicant domiciles: difference between cycle and 2018 cycle (at 1 day after A level results day)

- England
- Northern Ireland
- Scotland
- Wales
- EU (excluding UK)
- Not EU



Note: The percentage change is not plotted in the above chart for groups with fewer than 30 placed applicants in any one cycle.

### B.5 Placed applicants at 1 day after A level results day: providers in England

Placed applicants by domicile (at 1 day after A level results day)

Domicile of applicant	2010	2011	2012	2013	2014	2015	2016	2017	2018	2019
England	279,410	286,240	260,210	285,960	291,580	300,750	309,220	303,180	295,890	291,940
Northern Ireland	2,910	3,330	2,700	2,990	3,020	3,380	3,540	3,430	3,430	2,920
Scotland	1,530	1,400	1,240	1,330	1,290	1,430	1,520	1,440	1,350	1,370
Wales	5,590	5,650	6,340	6,480	7,150	7,440	7,640	7,370	7,220	7,200
EU (excluding UK)	15,830	17,410	14,160	15,710	16,870	19,380	21,490	21,280	21,820	21,910
Not EU	21,170	21,230	21,900	23,720	24,910	26,520	26,630	27,650	28,640	30,070

### B.6 Placed applicants at 1 day after A level results day: providers in England

Selected applicant domiciles: difference between cycle and 2018 cycle (at 1 day after A level results day)

Domicile of applicant	2010	2011	2012	2013	2014	2015	2016	2017	2018	2019
England	-6%	-3%	-12%	-3%	-1%	2%	5%	2%	0%	-1%
Northern Ireland	-15%	-3%	-21%	-13%	-12%	-1%	3%	0%	0%	-15%
Scotland	13%	4%	-8%	-1%	-4%	6%	13%	7%	0%	2%
Wales	-22%	-22%	-12%	-10%	-1%	3%	6%	2%	0%	-0%
EU (excluding UK)	-27%	-20%	-35%	-28%	-23%	-11%	-2%	-2%	0%	0%
Not EU	-26%	-26%	-24%	-17%	-13%	-7%	-7%	-3%	0%	5%

Note: The percentage change is not recorded in the above table for groups with fewer than 10 placed applicants in that cycle or in the 2018 cycle.

**B.7 Placed applicants at 1 day after A level results day: providers in Northern Ireland**  
Selected applicant domiciles: difference between cycle and 2018 cycle (at 1 day after A level results day)

- England
- Northern Ireland
- Scotland
- Wales
- EU (excluding UK)
- Not EU



Note: The percentage change is not plotted in the above chart for groups with fewer than 30 placed applicants in any one cycle.

### B.8 Placed applicants at 1 day after A level results day: providers in Northern Ireland

Placed applicants by domicile (at 1 day after A level results day)

Domicile of applicant	2010	2011	2012	2013	2014	2015	2016	2017	2018	2019
England	170	200	180	210	290	500	260	260	230	230
Northern Ireland	7,090	6,970	6,670	7,710	7,700	7,320	7,790	7,490	7,100	7,590
Scotland	20	20	20	10	20	20	10	30	20	20
Wales	10	10	0	0	10	10	10	10	10	10
EU (excluding UK)	530	380	360	400	410	340	280	310	320	360
Not EU	60	100	140	160	160	130	190	180	230	210

### B.9 Placed applicants at 1 day after A level results day: providers in Northern Ireland

Selected applicant domiciles: difference between cycle and 2018 cycle (at 1 day after A level results day)

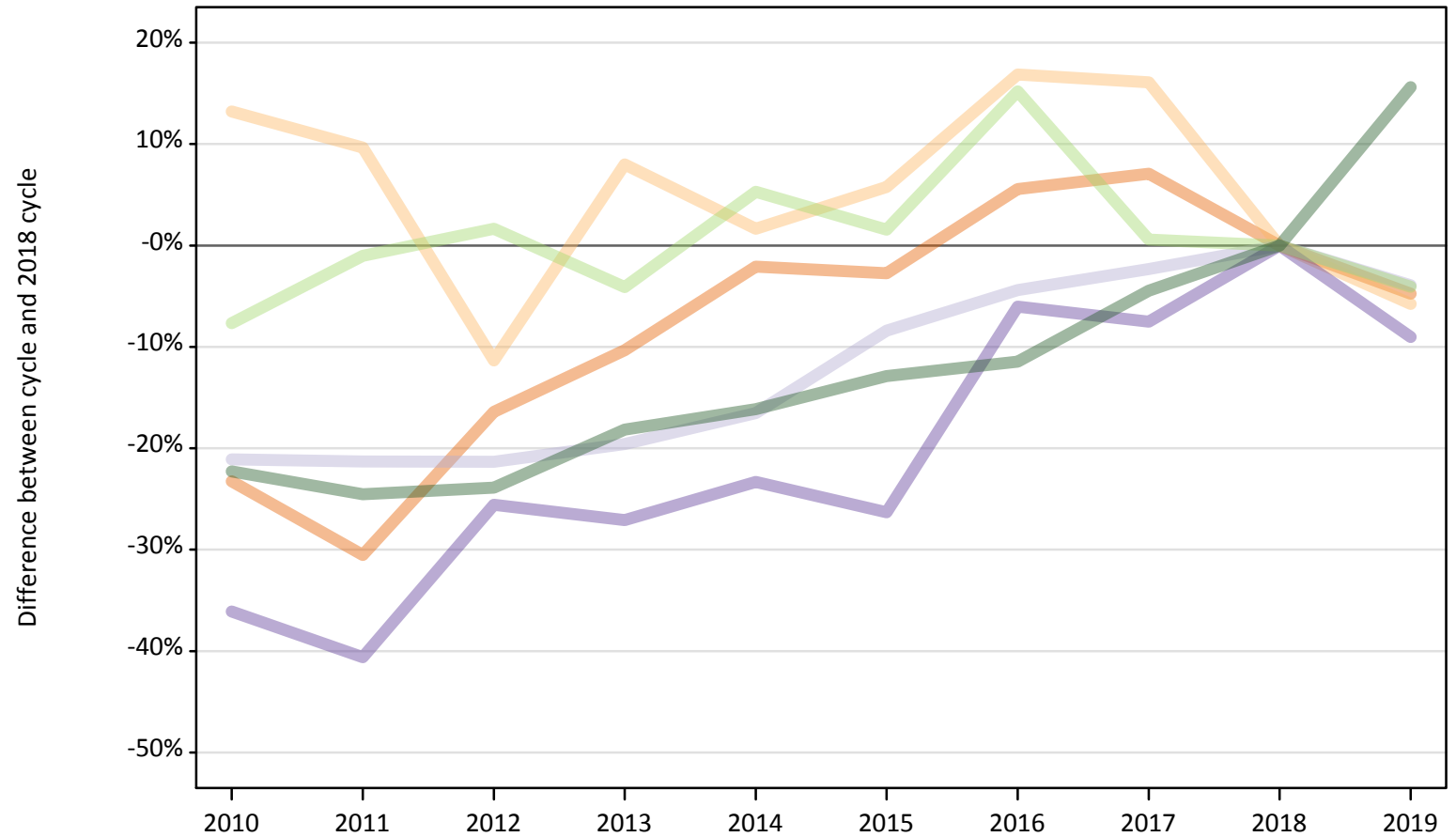
Domicile of applicant	2010	2011	2012	2013	2014	2015	2016	2017	2018	2019
England	-26%	-14%	-21%	-9%	23%	116%	14%	11%	0%	0%
Northern Ireland	-0%	-2%	-6%	9%	8%	3%	10%	6%	0%	7%
Scotland	-17%	-29%	0%	-50%	-33%	-38%	-46%	17%	0%	-33%
Wales						0%		20%	0%	
EU (excluding UK)	66%	20%	12%	25%	29%	7%	-11%	-4%	0%	14%
Not EU	-76%	-56%	-38%	-33%	-31%	-44%	-16%	-23%	0%	-9%

Note: The percentage change is not recorded in the above table for groups with fewer than 10 placed applicants in that cycle or in the 2018 cycle.

### B.10 Placed applicants at 1 day after A level results day: providers in Scotland

Selected applicant domiciles: difference between cycle and 2018 cycle (at 1 day after A level results day)

- England
- Northern Ireland
- Scotland
- Wales
- EU (excluding UK)
- Not EU



Note: The percentage change is not plotted in the above chart for groups with fewer than 30 placed applicants in any one cycle.

**B.11 Placed applicants at 1 day after A level results day: providers in Scotland**

Placed applicants by domicile (at 1 day after A level results day)

Domicile of applicant	2010	2011	2012	2013	2014	2015	2016	2017	2018	2019
England	3,300	2,990	3,600	3,860	4,210	4,180	4,540	4,610	4,300	4,100
Northern Ireland	1,020	990	800	970	920	950	1,050	1,050	900	850
Scotland	25,260	25,200	25,180	25,750	26,730	29,320	30,610	31,270	32,010	30,760
Wales	90	80	100	100	100	100	130	120	130	120
EU (excluding UK)	3,610	3,860	3,970	3,740	4,110	3,970	4,500	3,930	3,900	3,750
Not EU	2,130	2,060	2,080	2,240	2,290	2,380	2,420	2,610	2,730	3,160

**B.12 Placed applicants at 1 day after A level results day: providers in Scotland**

Selected applicant domiciles: difference between cycle and 2018 cycle (at 1 day after A level results day)

Domicile of applicant	2010	2011	2012	2013	2014	2015	2016	2017	2018	2019
England	-23%	-31%	-16%	-10%	-2%	-3%	6%	7%	0%	-5%
Northern Ireland	13%	10%	-11%	8%	2%	6%	17%	16%	0%	-6%
Scotland	-21%	-21%	-21%	-20%	-17%	-8%	-4%	-2%	0%	-4%
Wales	-36%	-41%	-26%	-27%	-23%	-26%	-6%	-8%	0%	-9%
EU (excluding UK)	-8%	-1%	2%	-4%	5%	2%	15%	1%	0%	-4%
Not EU	-22%	-25%	-24%	-18%	-16%	-13%	-11%	-4%	0%	16%

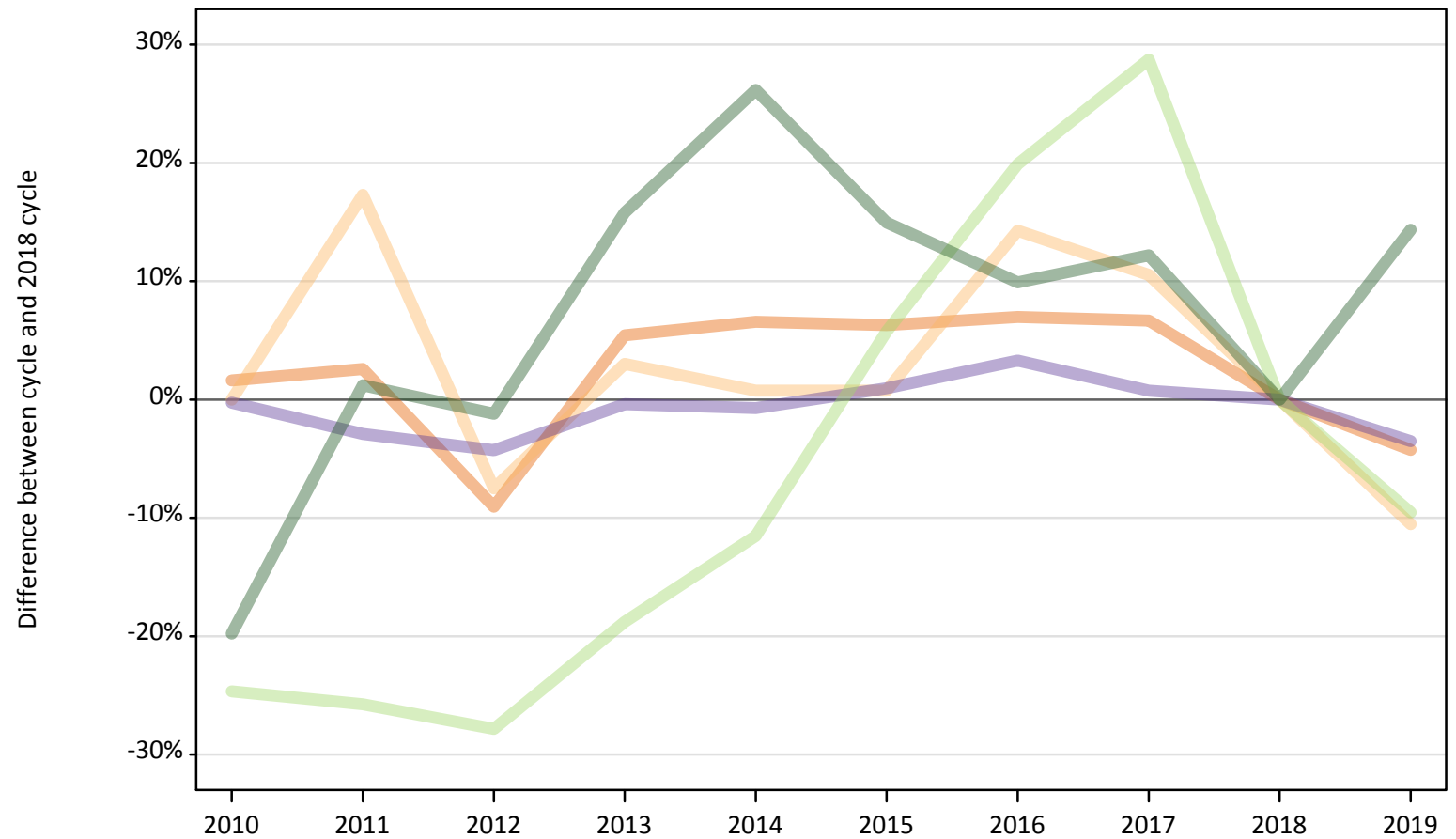
Note: The percentage change is not recorded in the above table for groups with fewer than 10 placed applicants in that cycle or in the 2018 cycle.



### B.13 Placed applicants at 1 day after A level results day: providers in Wales

Selected applicant domiciles: difference between cycle and 2018 cycle (at 1 day after A level results day)

- England
- Northern Ireland
- Scotland
- Wales
- EU (excluding UK)
- Not EU



Note: The percentage change is not plotted in the above chart for groups with fewer than 30 placed applicants in any one cycle.

**B.14 Placed applicants at 1 day after A level results day: providers in Wales**

Placed applicants by domicile (at 1 day after A level results day)

Domicile of applicant	2010	2011	2012	2013	2014	2015	2016	2017	2018	2019
England	8,530	8,610	7,640	8,850	8,950	8,930	8,980	8,960	8,400	8,040
Northern Ireland	130	160	120	140	130	130	150	150	130	120
Scotland	40	50	40	60	50	40	40	50	40	20
Wales	9,400	9,150	9,020	9,390	9,360	9,510	9,730	9,490	9,420	9,090
EU (excluding UK)	760	750	730	820	890	1,060	1,210	1,300	1,010	910
Not EU	670	840	820	960	1,050	950	910	930	830	950

**B.15 Placed applicants at 1 day after A level results day: providers in Wales**

Selected applicant domiciles: difference between cycle and 2018 cycle (at 1 day after A level results day)

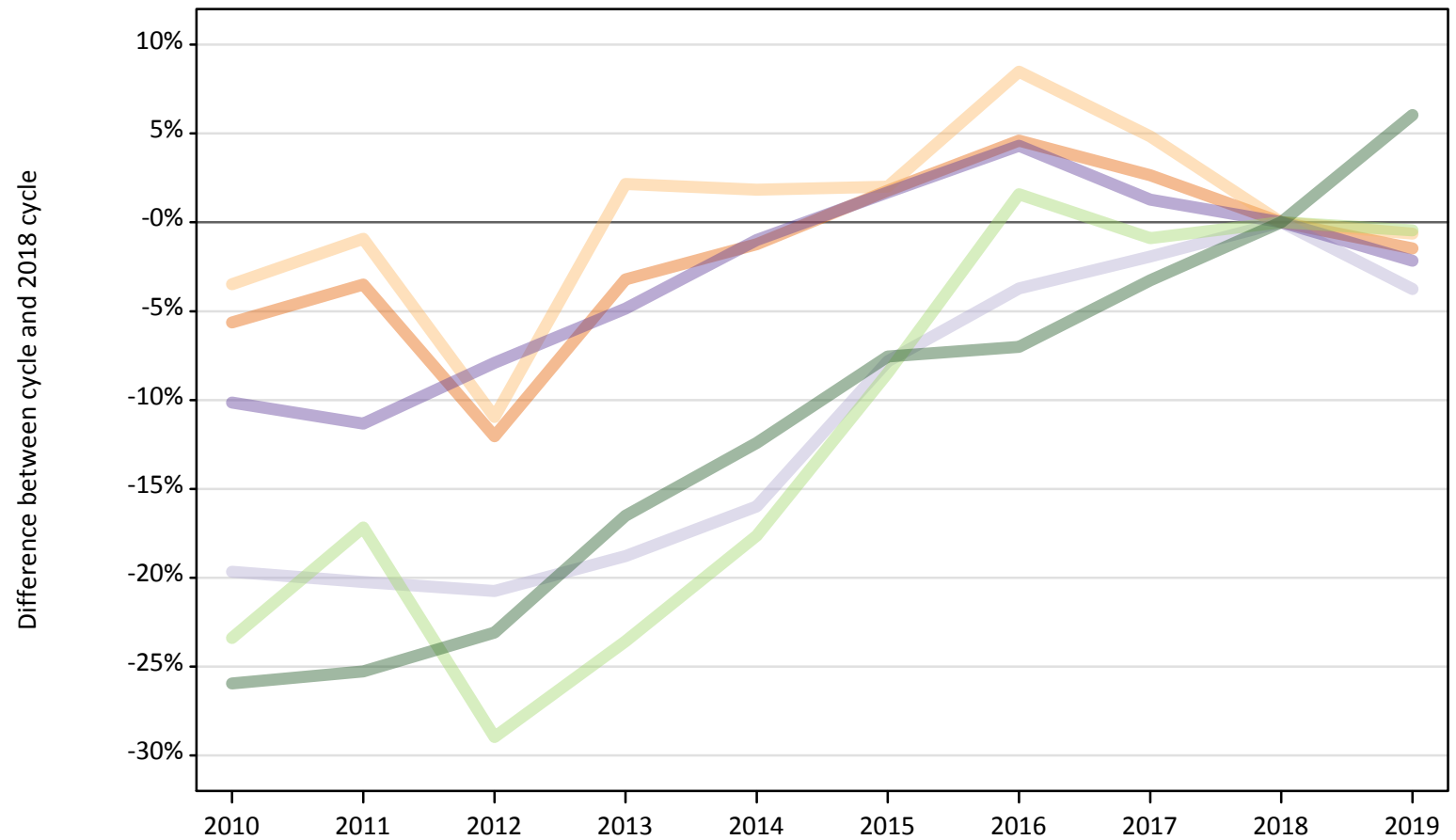
Domicile of applicant	2010	2011	2012	2013	2014	2015	2016	2017	2018	2019
England	2%	3%	-9%	5%	7%	6%	7%	7%	0%	-4%
Northern Ireland	0%	17%	-8%	3%	1%	1%	14%	11%	0%	-11%
Scotland	13%	23%	8%	49%	23%	0%	-8%	15%	0%	-41%
Wales	-0%	-3%	-4%	-0%	-1%	1%	3%	1%	0%	-4%
EU (excluding UK)	-25%	-26%	-28%	-19%	-12%	6%	20%	29%	0%	-10%
Not EU	-20%	1%	-1%	16%	26%	15%	10%	12%	0%	14%

Note: The percentage change is not recorded in the above table for groups with fewer than 10 placed applicants in that cycle or in the 2018 cycle.

### B.16 Placed applicants at 1 day after A level results day: providers in the UK

Selected applicant domiciles: difference between cycle and 2018 cycle (at 1 day after A level results day)

- England
- Northern Ireland
- Scotland
- Wales
- EU (excluding UK)
- Not EU



Note: The percentage change is not plotted in the above chart for groups with fewer than 30 placed applicants in any one cycle.

**B.17 Placed applicants at 1 day after A level results day: providers in the UK**

Placed applicants by domicile (at 1 day after A level results day)

Domicile of applicant	2010	2011	2012	2013	2014	2015	2016	2017	2018	2019
England	291,410	298,040	271,620	298,880	305,030	314,360	323,010	317,000	308,820	304,310
Northern Ireland	11,150	11,450	10,290	11,800	11,770	11,790	12,540	12,110	11,560	11,480
Scotland	26,850	26,660	26,490	27,150	28,080	30,810	32,180	32,780	33,420	32,170
Wales	15,080	14,880	15,460	15,970	16,620	17,070	17,510	17,000	16,780	16,420
EU (excluding UK)	20,720	22,400	19,210	20,670	22,280	24,750	27,480	26,810	27,050	26,930
Not EU	24,020	24,230	24,950	27,080	28,410	29,980	30,160	31,380	32,430	34,390

**B.18 Placed applicants at 1 day after A level results day: providers in the UK**

Selected applicant domiciles: difference between cycle and 2018 cycle (at 1 day after A level results day)

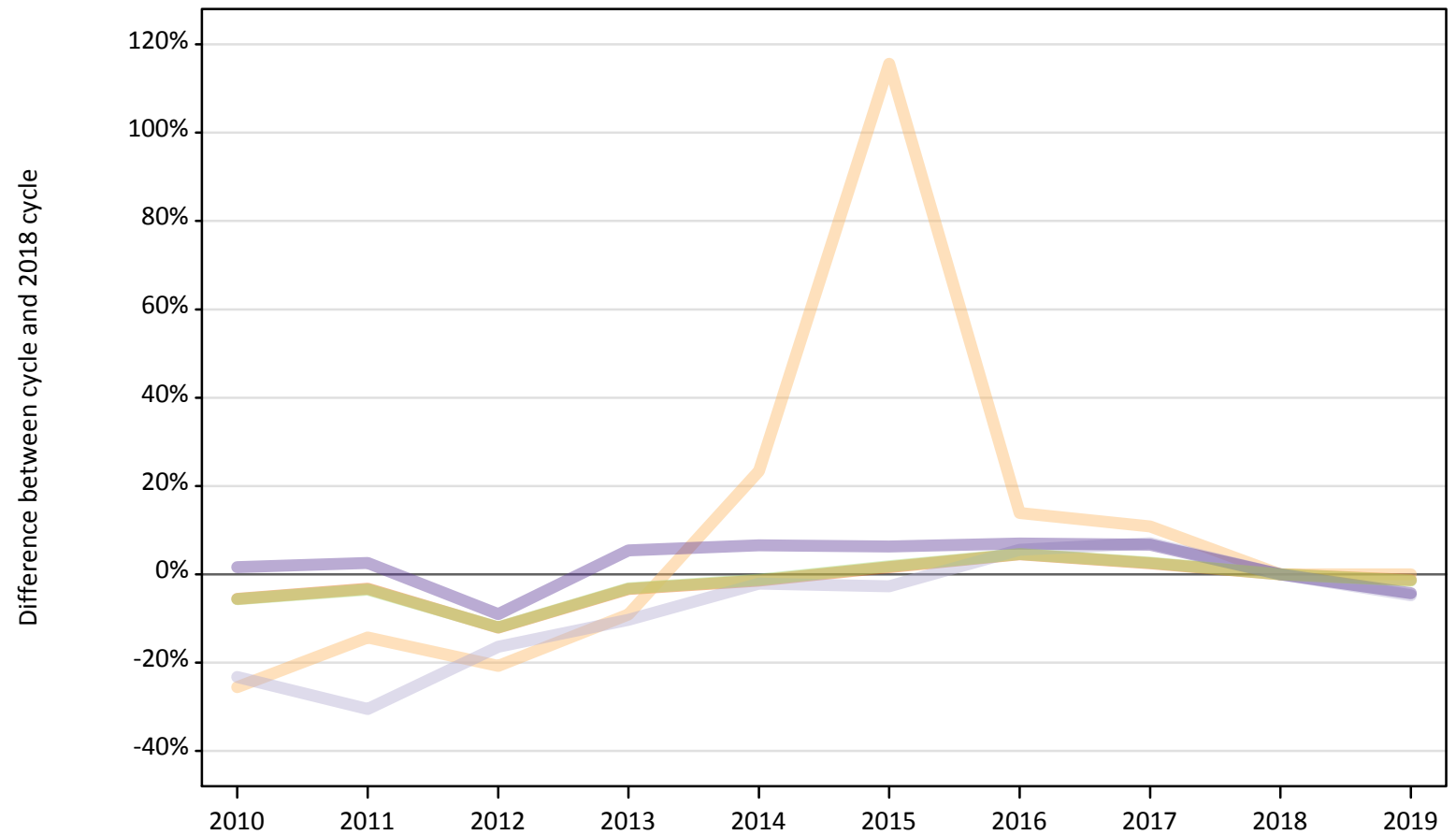
Domicile of applicant	2010	2011	2012	2013	2014	2015	2016	2017	2018	2019
England	-6%	-3%	-12%	-3%	-1%	2%	5%	3%	0%	-1%
Northern Ireland	-3%	-1%	-11%	2%	2%	2%	8%	5%	0%	-1%
Scotland	-20%	-20%	-21%	-19%	-16%	-8%	-4%	-2%	0%	-4%
Wales	-10%	-11%	-8%	-5%	-1%	2%	4%	1%	0%	-2%
EU (excluding UK)	-23%	-17%	-29%	-24%	-18%	-8%	2%	-1%	0%	-0%
Not EU	-26%	-25%	-23%	-17%	-12%	-8%	-7%	-3%	0%	6%

Note: The percentage change is not recorded in the above table for groups with fewer than 10 placed applicants in that cycle or in the 2018 cycle.

### B.19 Placed applicants at 1 day after A level results day: domiciled in England

Selected provider countries: difference between cycle and 2018 cycle (at 1 day after A level results day)

- England
- Northern Ireland
- Scotland
- Wales
- UK



Note: The percentage change is not plotted in the above chart for groups with fewer than 30 placed applicants in any one cycle.

**B.20 Placed applicants at 1 day after A level results day: domiciled in England**

Placed applicants by provider country (at 1 day after A level results day)

Country of provider	2010	2011	2012	2013	2014	2015	2016	2017	2018	2019
England	279,410	286,240	260,210	285,960	291,580	300,750	309,220	303,180	295,890	291,940
Northern Ireland	170	200	180	210	290	500	260	260	230	230
Scotland	3,300	2,990	3,600	3,860	4,210	4,180	4,540	4,610	4,300	4,100
Wales	8,530	8,610	7,640	8,850	8,950	8,930	8,980	8,960	8,400	8,040
UK	291,410	298,040	271,620	298,880	305,030	314,360	323,010	317,000	308,820	304,310

**B.21 Placed applicants at 1 day after A level results day: domiciled in England**

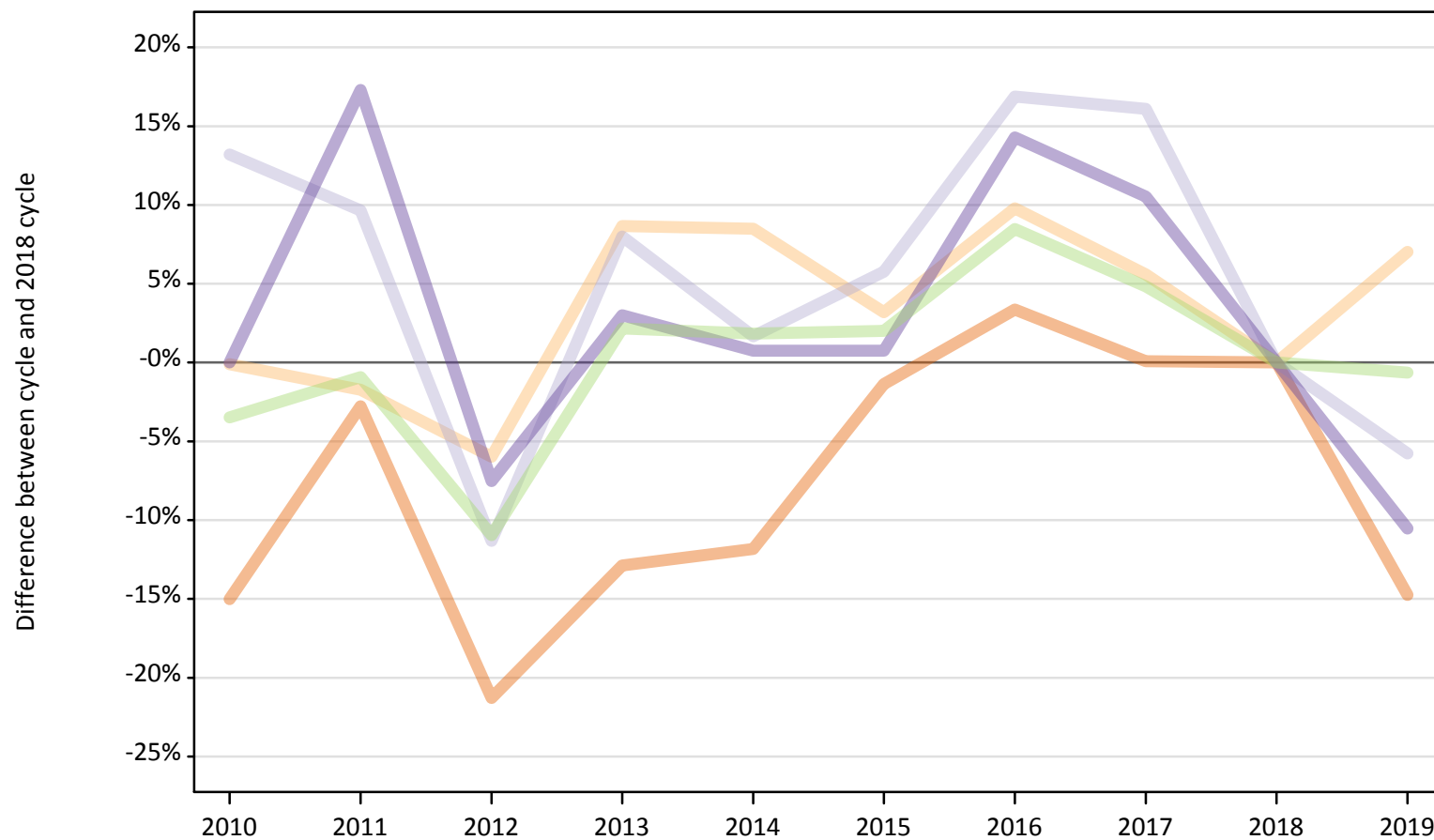
Selected provider countries: difference between cycle and 2018 cycle (at 1 day after A level results day)

Country of provider	2010	2011	2012	2013	2014	2015	2016	2017	2018	2019
England	-6%	-3%	-12%	-3%	-1%	2%	5%	2%	0%	-1%
Northern Ireland	-26%	-14%	-21%	-9%	23%	116%	14%	11%	0%	0%
Scotland	-23%	-31%	-16%	-10%	-2%	-3%	6%	7%	0%	-5%
Wales	2%	3%	-9%	5%	7%	6%	7%	7%	0%	-4%
UK	-6%	-3%	-12%	-3%	-1%	2%	5%	3%	0%	-1%

Note: The percentage change is not recorded in the above table for groups with fewer than 10 placed applicants in that cycle or in the 2018 cycle.

**B.22 Placed applicants at 1 day after A level results day: domiciled in Northern Ireland**  
Selected provider countries: difference between cycle and 2018 cycle (at 1 day after A level results day)

- England
- Northern Ireland
- Scotland
- Wales
- UK



Note: The percentage change is not plotted in the above chart for groups with fewer than 30 placed applicants in any one cycle.

### B.23 Placed applicants at 1 day after A level results day: domiciled in Northern Ireland

Placed applicants by provider country (at 1 day after A level results day)

Country of provider	2010	2011	2012	2013	2014	2015	2016	2017	2018	2019
England	2,910	3,330	2,700	2,990	3,020	3,380	3,540	3,430	3,430	2,920
Northern Ireland	7,090	6,970	6,670	7,710	7,700	7,320	7,790	7,490	7,100	7,590
Scotland	1,020	990	800	970	920	950	1,050	1,050	900	850
Wales	130	160	120	140	130	130	150	150	130	120
UK	11,150	11,450	10,290	11,800	11,770	11,790	12,540	12,110	11,560	11,480

### B.24 Placed applicants at 1 day after A level results day: domiciled in Northern Ireland

Selected provider countries: difference between cycle and 2018 cycle (at 1 day after A level results day)

Country of provider	2010	2011	2012	2013	2014	2015	2016	2017	2018	2019
England	-15%	-3%	-21%	-13%	-12%	-1%	3%	0%	0%	-15%
Northern Ireland	-0%	-2%	-6%	9%	8%	3%	10%	6%	0%	7%
Scotland	13%	10%	-11%	8%	2%	6%	17%	16%	0%	-6%
Wales	0%	17%	-8%	3%	1%	1%	14%	11%	0%	-11%
UK	-3%	-1%	-11%	2%	2%	2%	8%	5%	0%	-1%

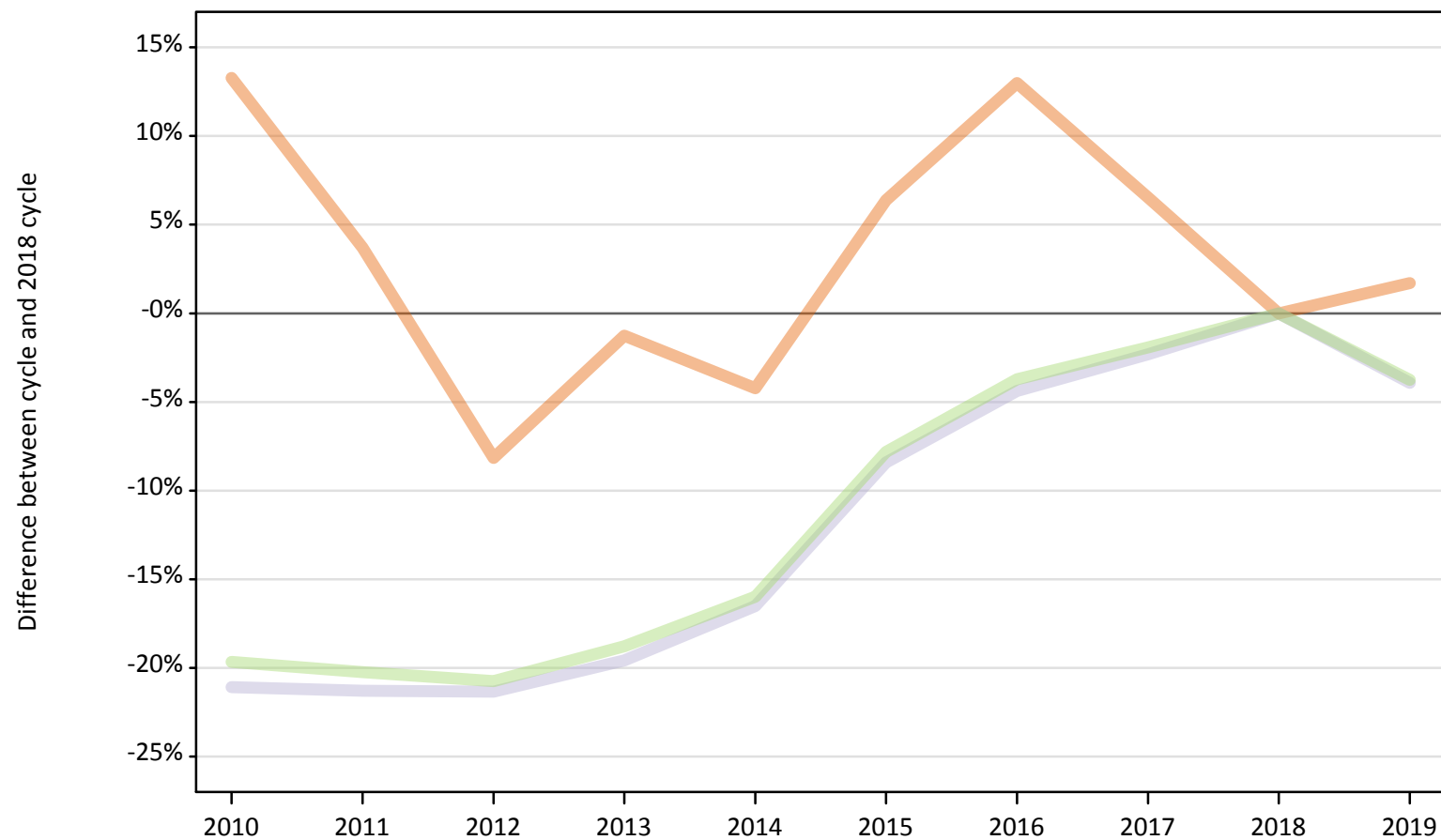
Note: The percentage change is not recorded in the above table for groups with fewer than 10 placed applicants in that cycle or in the 2018 cycle.



## B.25 Placed applicants at 1 day after A level results day: domiciled in Scotland

Selected provider countries: difference between cycle and 2018 cycle (at 1 day after A level results day)

- England
- Northern Ireland
- Scotland
- Wales
- UK



Note: The percentage change is not plotted in the above chart for groups with fewer than 30 placed applicants in any one cycle.

**B.26 Placed applicants at 1 day after A level results day: domiciled in Scotland**

Placed applicants by provider country (at 1 day after A level results day)

Country of provider	2010	2011	2012	2013	2014	2015	2016	2017	2018	2019
England	1,530	1,400	1,240	1,330	1,290	1,430	1,520	1,440	1,350	1,370
Northern Ireland	20	20	20	10	20	20	10	30	20	20
Scotland	25,260	25,200	25,180	25,750	26,730	29,320	30,610	31,270	32,010	30,760
Wales	40	50	40	60	50	40	40	50	40	20
UK	26,850	26,660	26,490	27,150	28,080	30,810	32,180	32,780	33,420	32,170

**B.27 Placed applicants at 1 day after A level results day: domiciled in Scotland**

Selected provider countries: difference between cycle and 2018 cycle (at 1 day after A level results day)

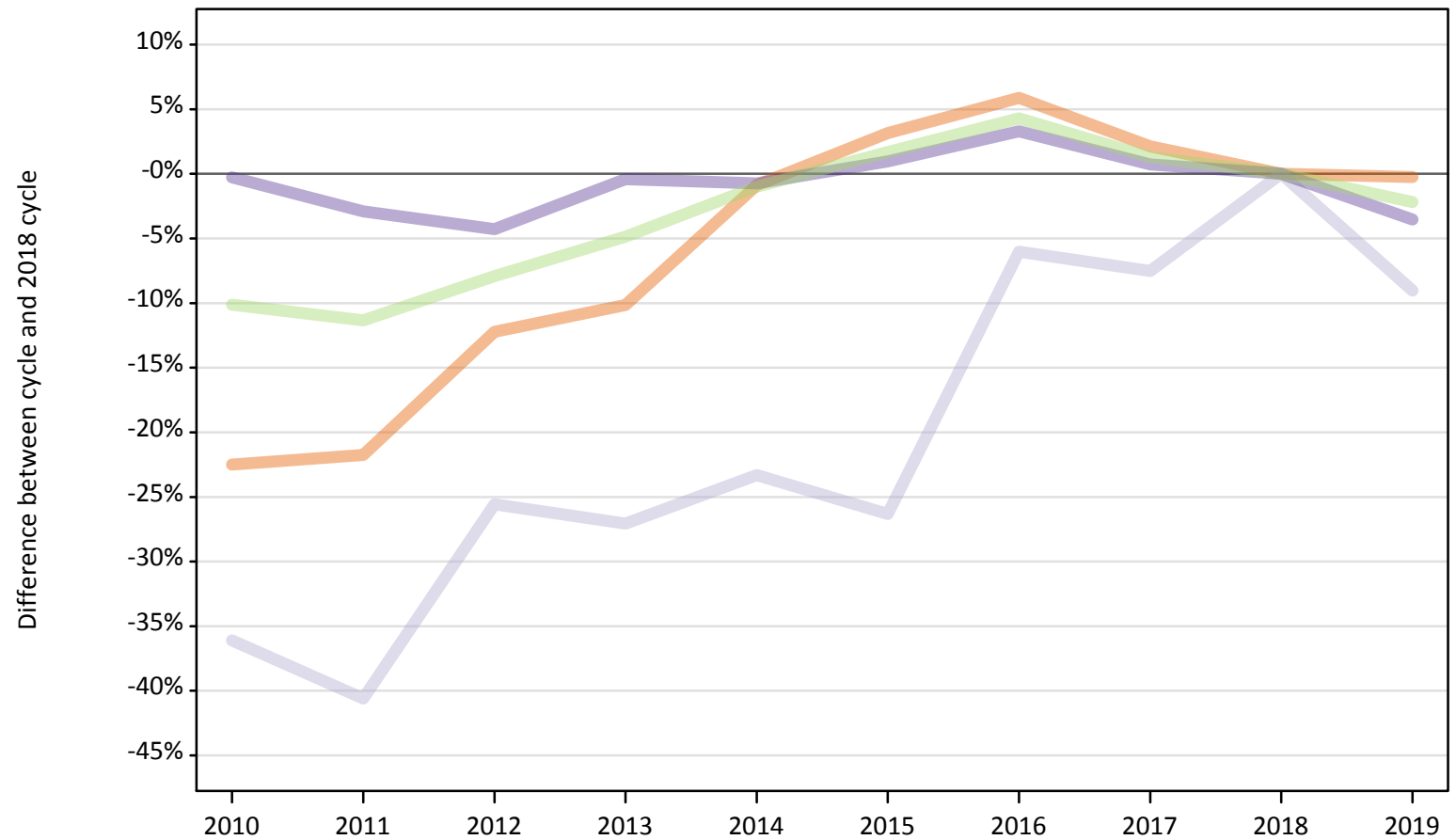
Country of provider	2010	2011	2012	2013	2014	2015	2016	2017	2018	2019
England	13%	4%	-8%	-1%	-4%	6%	13%	7%	0%	2%
Northern Ireland	-17%	-29%	0%	-50%	-33%	-38%	-46%	17%	0%	-33%
Scotland	-21%	-21%	-21%	-20%	-17%	-8%	-4%	-2%	0%	-4%
Wales	13%	23%	8%	49%	23%	0%	-8%	15%	0%	-41%
UK	-20%	-20%	-21%	-19%	-16%	-8%	-4%	-2%	0%	-4%

Note: The percentage change is not recorded in the above table for groups with fewer than 10 placed applicants in that cycle or in the 2018 cycle.

### B.28 Placed applicants at 1 day after A level results day: domiciled in Wales

Selected provider countries: difference between cycle and 2018 cycle (at 1 day after A level results day)

- England
- Northern Ireland
- Scotland
- Wales
- UK



Note: The percentage change is not plotted in the above chart for groups with fewer than 30 placed applicants in any one cycle.

**B.29 Placed applicants at 1 day after A level results day: domiciled in Wales**

Placed applicants by provider country (at 1 day after A level results day)

Country of provider	2010	2011	2012	2013	2014	2015	2016	2017	2018	2019
England	5,590	5,650	6,340	6,480	7,150	7,440	7,640	7,370	7,220	7,200
Northern Ireland	10	10	0	0	10	10	10	10	10	10
Scotland	90	80	100	100	100	100	130	120	130	120
Wales	9,400	9,150	9,020	9,390	9,360	9,510	9,730	9,490	9,420	9,090
UK	15,080	14,880	15,460	15,970	16,620	17,070	17,510	17,000	16,780	16,420

**B.30 Placed applicants at 1 day after A level results day: domiciled in Wales**

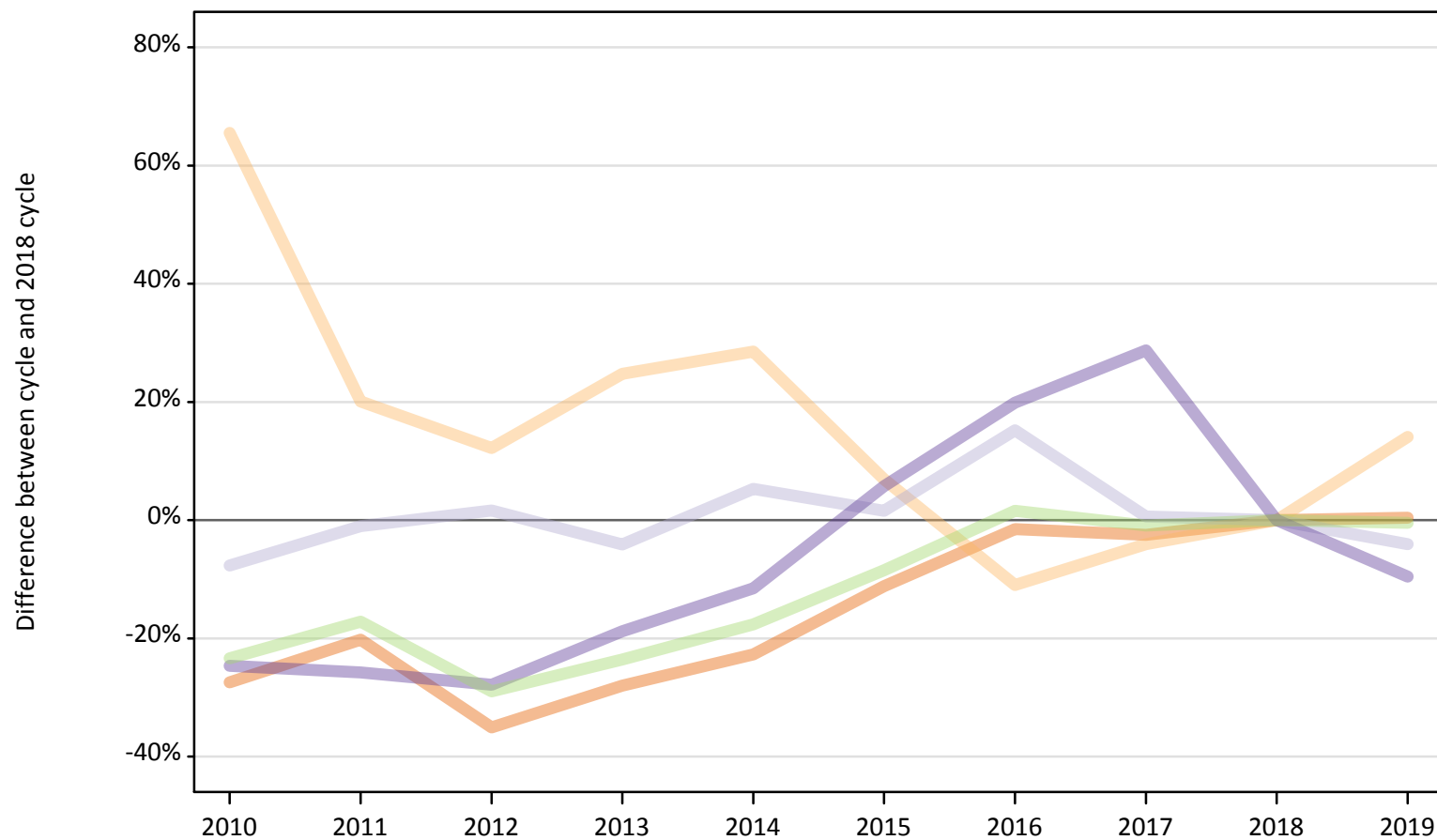
Selected provider countries: difference between cycle and 2018 cycle (at 1 day after A level results day)

Country of provider	2010	2011	2012	2013	2014	2015	2016	2017	2018	2019
England	-22%	-22%	-12%	-10%	-1%	3%	6%	2%	0%	-0%
Northern Ireland						0%		20%	0%	
Scotland	-36%	-41%	-26%	-27%	-23%	-26%	-6%	-8%	0%	-9%
Wales	-0%	-3%	-4%	-0%	-1%	1%	3%	1%	0%	-4%
UK	-10%	-11%	-8%	-5%	-1%	2%	4%	1%	0%	-2%

Note: The percentage change is not recorded in the above table for groups with fewer than 10 placed applicants in that cycle or in the 2018 cycle.

**B.31 Placed applicants at 1 day after A level results day: domiciled in EU (excluding UK)**  
Selected provider countries: difference between cycle and 2018 cycle (at 1 day after A level results day)

- England
- Northern Ireland
- Scotland
- Wales
- UK



Note: The percentage change is not plotted in the above chart for groups with fewer than 30 placed applicants in any one cycle.

### B.32 Placed applicants at 1 day after A level results day: domiciled in EU (excluding UK)

Placed applicants by provider country (at 1 day after A level results day)

Country of provider	2010	2011	2012	2013	2014	2015	2016	2017	2018	2019
England	15,830	17,410	14,160	15,710	16,870	19,380	21,490	21,280	21,820	21,910
Northern Ireland	530	380	360	400	410	340	280	310	320	360
Scotland	3,610	3,860	3,970	3,740	4,110	3,970	4,500	3,930	3,900	3,750
Wales	760	750	730	820	890	1,060	1,210	1,300	1,010	910
UK	20,720	22,400	19,210	20,670	22,280	24,750	27,480	26,810	27,050	26,930

### B.33 Placed applicants at 1 day after A level results day: domiciled in EU (excluding UK)

Selected provider countries: difference between cycle and 2018 cycle (at 1 day after A level results day)

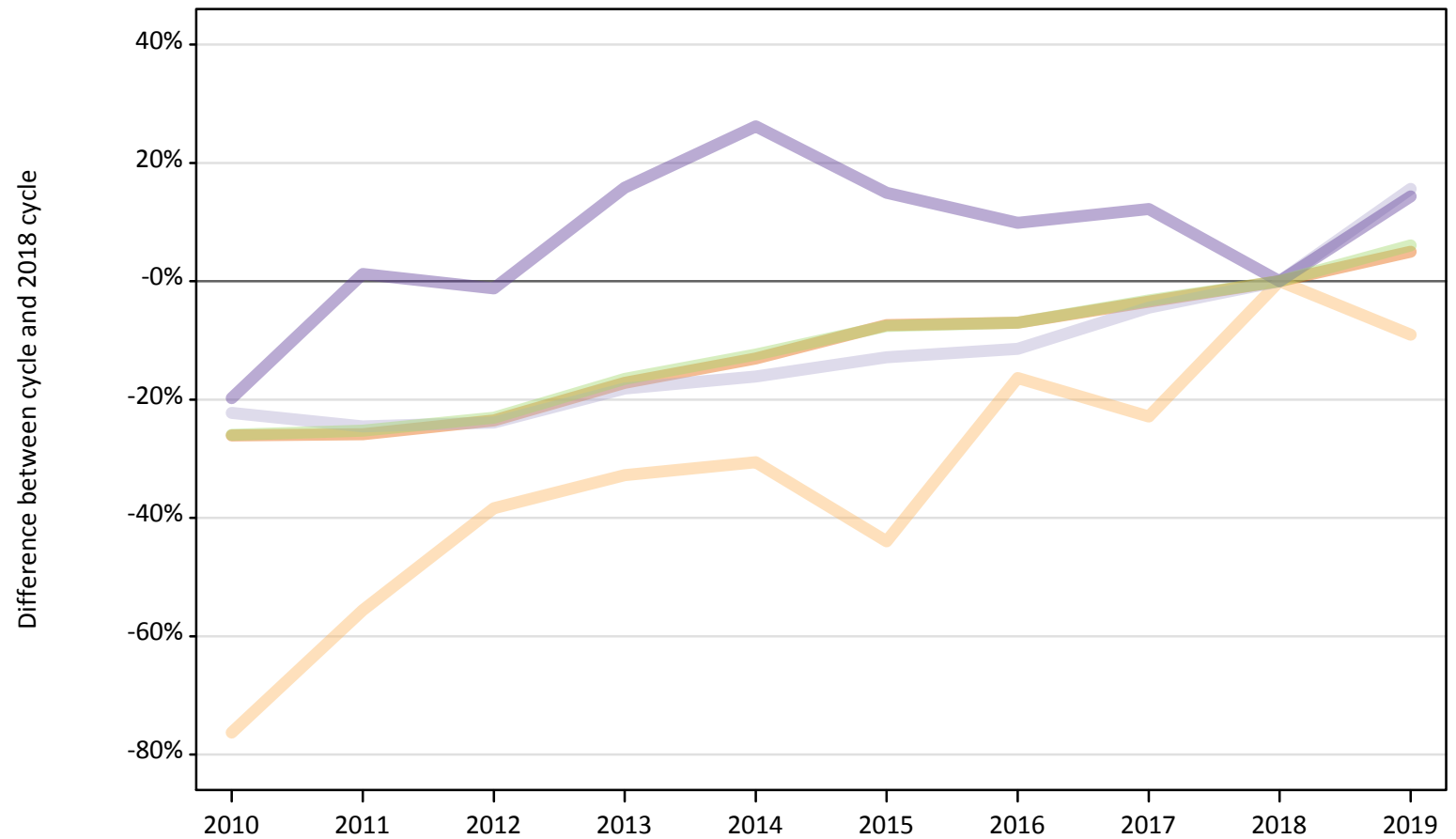
Country of provider	2010	2011	2012	2013	2014	2015	2016	2017	2018	2019
England	-27%	-20%	-35%	-28%	-23%	-11%	-2%	-2%	0%	0%
Northern Ireland	66%	20%	12%	25%	29%	7%	-11%	-4%	0%	14%
Scotland	-8%	-1%	2%	-4%	5%	2%	15%	1%	0%	-4%
Wales	-25%	-26%	-28%	-19%	-12%	6%	20%	29%	0%	-10%
UK	-23%	-17%	-29%	-24%	-18%	-8%	2%	-1%	0%	-0%

Note: The percentage change is not recorded in the above table for groups with fewer than 10 placed applicants in that cycle or in the 2018 cycle.

### B.34 Placed applicants at 1 day after A level results day: domiciled in Not EU

Selected provider countries: difference between cycle and 2018 cycle (at 1 day after A level results day)

- England
- Northern Ireland
- Scotland
- Wales
- UK



Note: The percentage change is not plotted in the above chart for groups with fewer than 30 placed applicants in any one cycle.

### B.35 Placed applicants at 1 day after A level results day: domiciled in Not EU

Placed applicants by provider country (at 1 day after A level results day)

Country of provider	2010	2011	2012	2013	2014	2015	2016	2017	2018	2019
England	21,170	21,230	21,900	23,720	24,910	26,520	26,630	27,650	28,640	30,070
Northern Ireland	60	100	140	160	160	130	190	180	230	210
Scotland	2,130	2,060	2,080	2,240	2,290	2,380	2,420	2,610	2,730	3,160
Wales	670	840	820	960	1,050	950	910	930	830	950
UK	24,020	24,230	24,950	27,080	28,410	29,980	30,160	31,380	32,430	34,390

### B.36 Placed applicants at 1 day after A level results day: domiciled in Not EU

Selected provider countries: difference between cycle and 2018 cycle (at 1 day after A level results day)

Country of provider	2010	2011	2012	2013	2014	2015	2016	2017	2018	2019
England	-26%	-26%	-24%	-17%	-13%	-7%	-7%	-3%	0%	5%
Northern Ireland	-76%	-56%	-38%	-33%	-31%	-44%	-16%	-23%	0%	-9%
Scotland	-22%	-25%	-24%	-18%	-16%	-13%	-11%	-4%	0%	16%
Wales	-20%	1%	-1%	16%	26%	15%	10%	12%	0%	14%
UK	-26%	-25%	-23%	-17%	-12%	-8%	-7%	-3%	0%	6%

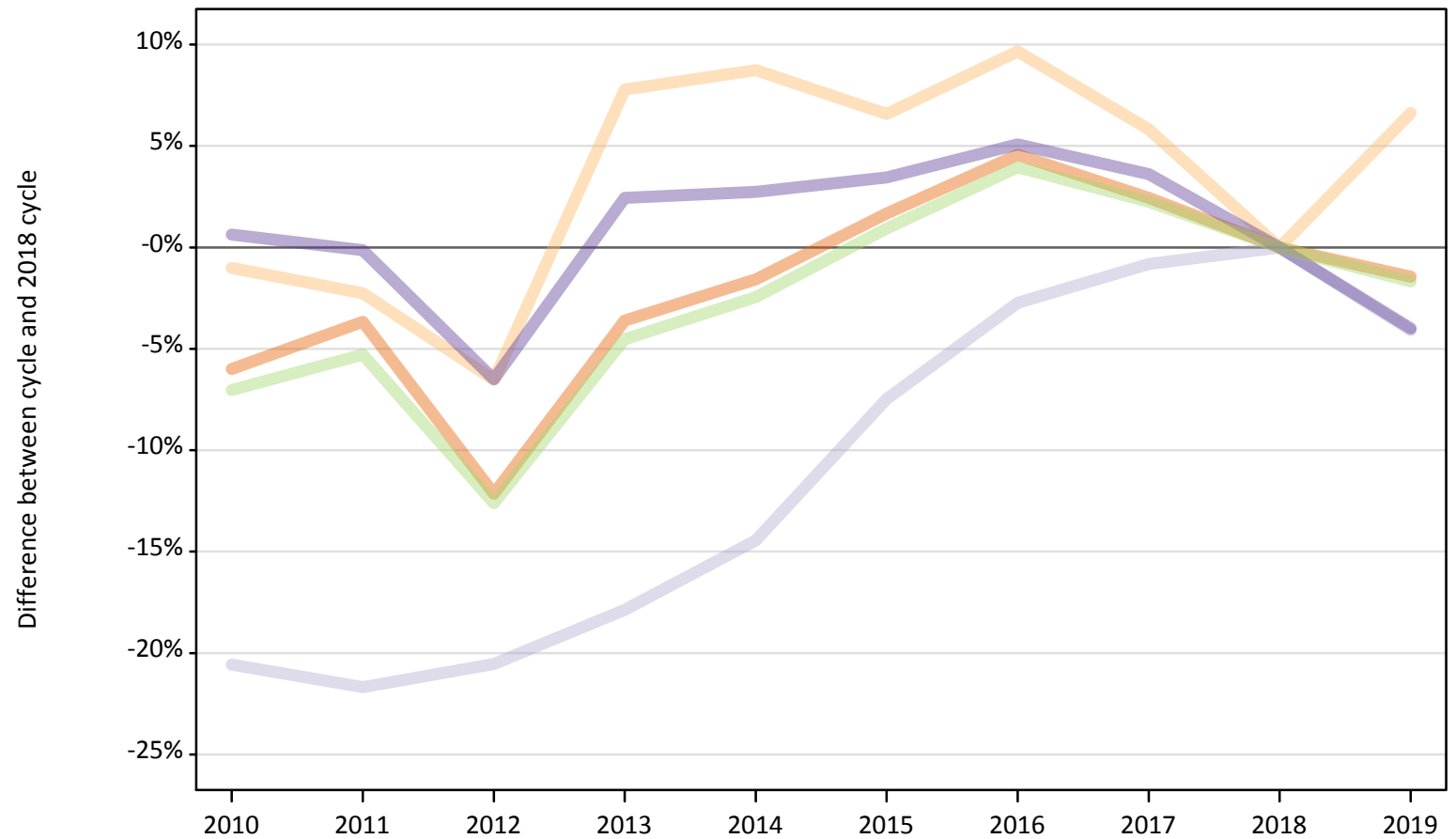
Note: The percentage change is not recorded in the above table for groups with fewer than 10 placed applicants in that cycle or in the 2018 cycle.



### B.37 Placed applicants at 1 day after A level results day: domiciled in UK

Selected provider countries: difference between cycle and 2018 cycle (at 1 day after A level results day)

- England
- Northern Ireland
- Scotland
- Wales
- UK



Note: The percentage change is not plotted in the above chart for groups with fewer than 30 placed applicants in any one cycle.

**B.38 Placed applicants at 1 day after A level results day: domiciled in UK**

Placed applicants by provider country (at 1 day after A level results day)

Country of provider	2010	2011	2012	2013	2014	2015	2016	2017	2018	2019
England	289,440	296,610	270,480	296,760	303,050	313,010	321,930	315,420	307,880	303,430
Northern Ireland	7,290	7,190	6,880	7,930	8,000	7,840	8,070	7,790	7,360	7,850
Scotland	29,670	29,250	29,680	30,670	31,960	34,560	36,330	37,040	37,350	35,820
Wales	18,110	17,970	16,820	18,430	18,480	18,610	18,910	18,640	17,990	17,270
UK	344,500	351,030	323,860	353,800	361,490	374,020	385,230	378,890	370,580	364,380

**B.39 Placed applicants at 1 day after A level results day: domiciled in UK**

Selected provider countries: difference between cycle and 2018 cycle (at 1 day after A level results day)

Country of provider	2010	2011	2012	2013	2014	2015	2016	2017	2018	2019
England	-6%	-4%	-12%	-4%	-2%	2%	5%	2%	0%	-1%
Northern Ireland	-1%	-2%	-7%	8%	9%	7%	10%	6%	0%	7%
Scotland	-21%	-22%	-21%	-18%	-14%	-7%	-3%	-1%	0%	-4%
Wales	1%	-0%	-7%	2%	3%	3%	5%	4%	0%	-4%
UK	-7%	-5%	-13%	-5%	-2%	1%	4%	2%	0%	-2%

Note: The percentage change is not recorded in the above table for groups with fewer than 10 placed applicants in that cycle or in the 2018 cycle.