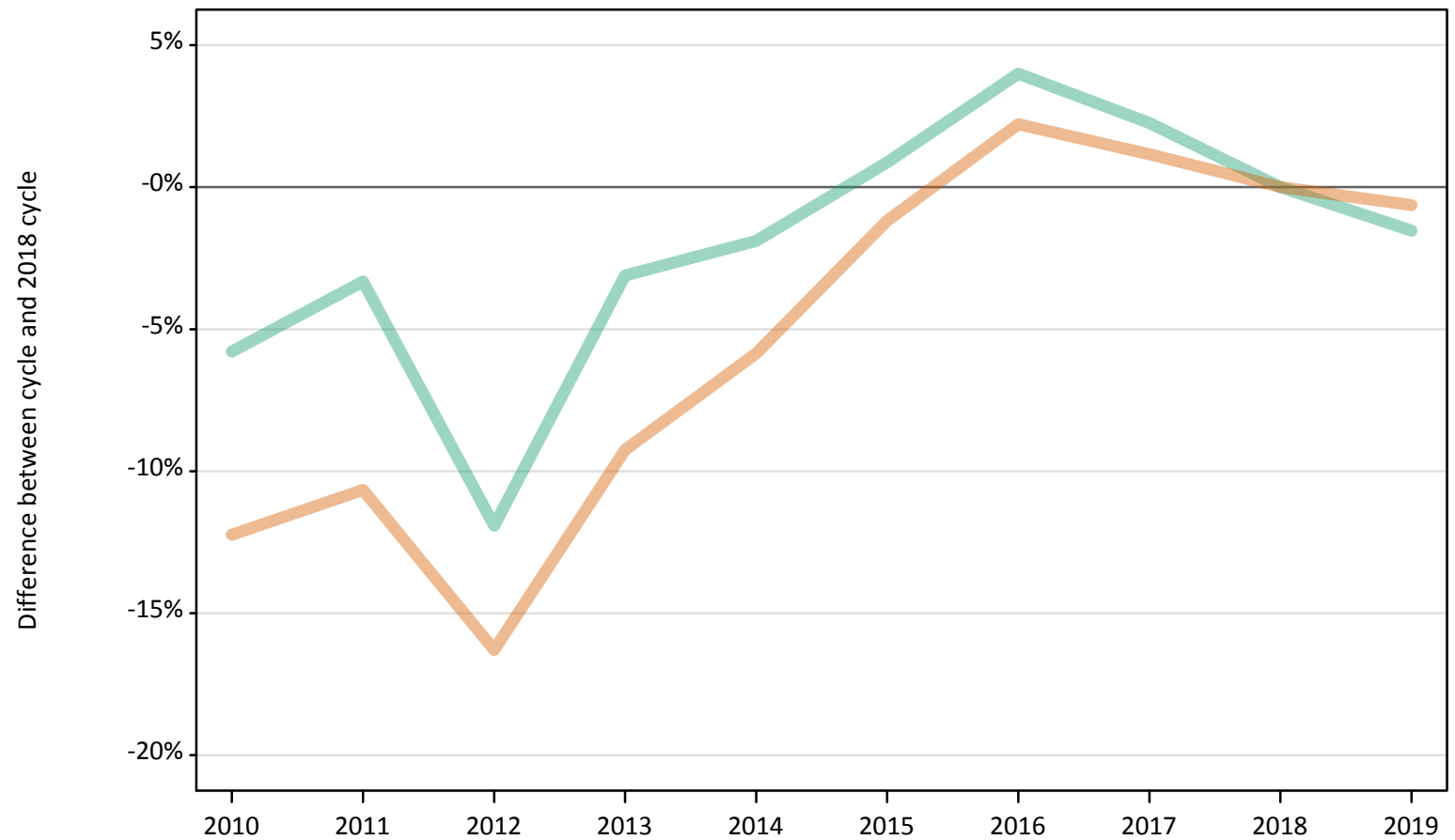


Analysis at 00:05 on Friday 16 August 2019 (1 day after A level results day)

S.1 Placed applicants from all domiciles by sex: 1 day after A level results day

Placed applicants: change relative to 2018 cycle totals

Men
Women



Note: The percentage change is not plotted in the above chart for groups with fewer than 30 placed applicants in any one cycle.

S.2 Placed applicants from all domiciles by sex: 1 day after A level results day

Applicant Status	Sex	2010	2011	2012	2013	2014	2015	2016	2017	2018	2019
Placed	Men	172,760	177,280	161,530	177,690	179,920	184,990	190,710	187,530	183,380	180,570
	Women	216,480	220,380	206,490	223,860	232,250	243,770	252,160	249,550	246,680	245,120
	All	389,240	397,660	368,020	401,540	412,170	428,760	442,870	437,070	430,060	425,700

S.3 Placed applicants from all domiciles by sex: 1 day after A level results day

Placed applicants: change relative to 2018 cycle totals

Applicant Status	Sex	2010	2011	2012	2013	2014	2015	2016	2017	2018	2019
Placed	Men	-6%	-3%	-12%	-3%	-2%	1%	4%	2%	0%	-2%
	Women	-12%	-11%	-16%	-9%	-6%	-1%	2%	1%	0%	-1%
	All	-9%	-8%	-14%	-7%	-4%	-0%	3%	2%	0%	-1%

Note: The percentage change is not recorded in the above table for groups with fewer than 10 placed applicants in that cycle or in the 2018 cycle.

S.4 Placed applicants from all domiciles by sex: 1 day after A level results day

Placed applicants: absolute change relative to 2018 cycle totals

Applicant Status	Sex	2010	2011	2012	2013	2014	2015	2016	2017	2018	2019
Placed	Men	-10,620	-6,100	-21,850	-5,690	-3,460	1,610	7,330	4,150	0	-2,810
	Women	-30,200	-26,300	-40,190	-22,830	-14,430	-2,910	5,480	2,870	0	-1,560
	All	-40,820	-32,400	-62,040	-28,520	-17,890	-1,300	12,800	7,010	0	-4,370

S.5 Placed applicants from the UK by sex: 1 day after A level results day

Placed applicants: change relative to 2018 cycle totals

Men
Women



Note: The percentage change is not plotted in the above chart for groups with fewer than 30 placed applicants in any one cycle.

S.6 Placed applicants from the UK by sex: 1 day after A level results day

Applicant Status	Sex	2010	2011	2012	2013	2014	2015	2016	2017	2018	2019
Placed	Men	151,510	155,620	141,340	155,900	157,350	161,100	165,470	161,850	157,610	153,900
	Women	192,990	195,400	182,520	197,900	204,140	212,930	219,760	217,040	212,980	210,480
	All	344,500	351,030	323,860	353,800	361,490	374,020	385,230	378,890	370,580	364,380

S.7 Placed applicants from the UK by sex: 1 day after A level results day

Placed applicants: change relative to 2018 cycle totals

Applicant Status	Sex	2010	2011	2012	2013	2014	2015	2016	2017	2018	2019
Placed	Men	-4%	-1%	-10%	-1%	-0%	2%	5%	3%	0%	-2%
	Women	-9%	-8%	-14%	-7%	-4%	-0%	3%	2%	0%	-1%
	All	-7%	-5%	-13%	-5%	-2%	1%	4%	2%	0%	-2%

Note: The percentage change is not recorded in the above table for groups with fewer than 10 placed applicants in that cycle or in the 2018 cycle.

S.8 Placed applicants from the UK by sex: 1 day after A level results day

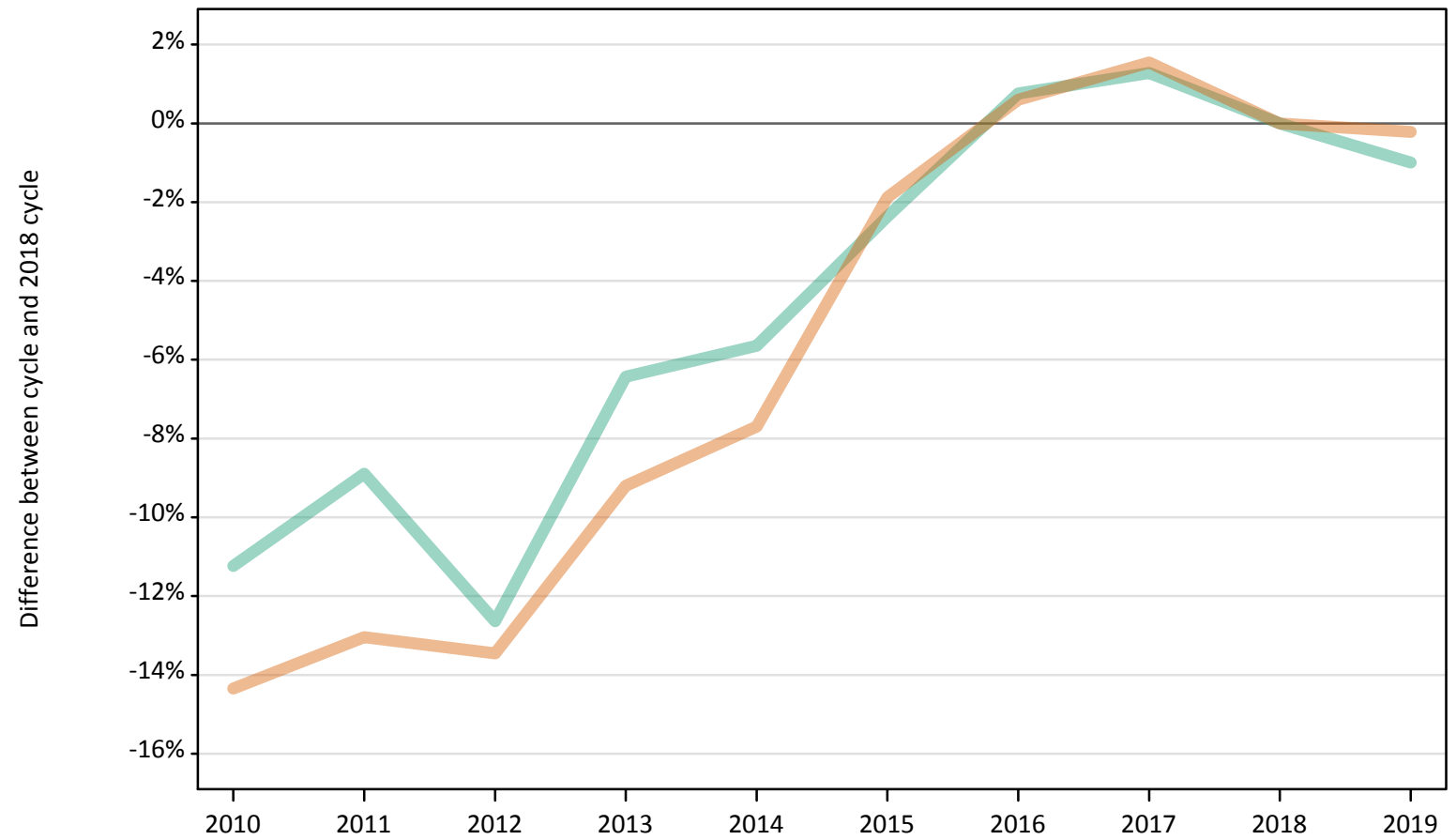
Placed applicants: absolute change relative to 2018 cycle totals

Applicant Status	Sex	2010	2011	2012	2013	2014	2015	2016	2017	2018	2019
Placed	Men	-6,100	-1,980	-16,270	-1,710	-260	3,490	7,860	4,250	0	-3,710
	Women	-19,990	-17,570	-30,460	-15,080	-8,840	-50	6,790	4,060	0	-2,500
	All	-26,080	-19,560	-46,730	-16,790	-9,090	3,440	14,650	8,310	0	-6,200

S.9 Placed 18 year old applicants from the UK by sex: 1 day after A level results day

Placed 18 year old applicants: change relative to 2018 cycle totals

Men
Women



Note: The percentage change is not plotted in the above chart for groups with fewer than 30 placed applicants in any one cycle.

S.10 Placed 18 year old applicants from the UK by sex: 1 day after A level results day

Applicant Status	Sex	2010	2011	2012	2013	2014	2015	2016	2017	2018	2019
Placed	Men	81,550	83,700	80,260	85,970	86,680	89,700	92,570	93,040	91,870	90,960
	Women	102,730	104,290	103,800	108,900	110,700	117,670	120,650	121,780	119,930	119,670
	All	184,280	187,980	184,060	194,870	197,380	207,370	213,220	214,830	211,800	210,630

S.11 Placed 18 year old applicants from the UK by sex: 1 day after A level results day

Placed 18 year old applicants: change relative to 2018 cycle totals

Applicant Status	Sex	2010	2011	2012	2013	2014	2015	2016	2017	2018	2019
Placed	Men	-11%	-9%	-13%	-6%	-6%	-2%	1%	1%	0%	-1%
	Women	-14%	-13%	-13%	-9%	-8%	-2%	1%	2%	0%	-0%
	All	-13%	-11%	-13%	-8%	-7%	-2%	1%	1%	0%	-1%

Note: The percentage change is not recorded in the above table for groups with fewer than 10 placed applicants in that cycle or in the 2018 cycle.

S.12 Placed 18 year old applicants from the UK by sex: 1 day after A level results day

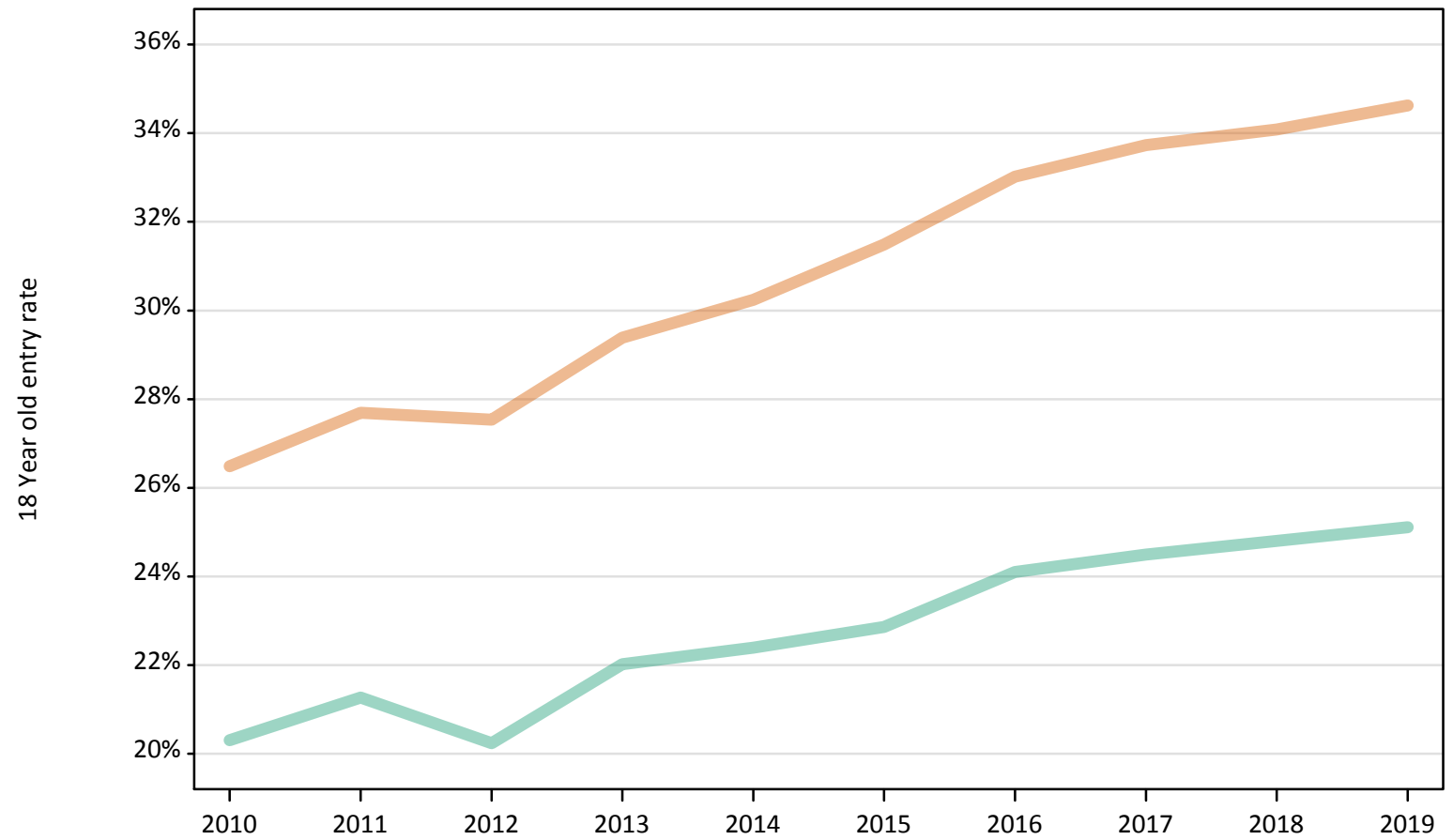
Placed 18 year old applicants: absolute change relative to 2018 cycle totals

Applicant Status	Sex	2010	2011	2012	2013	2014	2015	2016	2017	2018	2019
Placed	Men	-10,320	-8,170	-11,610	-5,910	-5,190	-2,170	700	1,170	0	-910
	Women	-17,200	-15,640	-16,130	-11,030	-9,230	-2,260	720	1,850	0	-260
	All	-27,520	-23,820	-27,740	-16,940	-14,420	-4,430	1,420	3,020	0	-1,180

S.13 Placed 18 year old applicants from the UK by sex: 1 day after A level results day

Placed 18 year old applicants: entry rate

Men
Women



S.14 Placed 18 year old applicants from the UK by sex: 1 day after A level results day

Placed 18 year old applicants: entry rate

Applicant Status	Sex	2010	2011	2012	2013	2014	2015	2016	2017	2018	2019
Placed	Men	20.3%	21.3%	20.2%	22.0%	22.4%	22.9%	24.1%	24.5%	24.8%	25.1%
	Women	26.5%	27.7%	27.5%	29.4%	30.2%	31.5%	33.0%	33.7%	34.1%	34.6%
	All	23.3%	24.4%	23.8%	25.6%	26.2%	27.1%	28.4%	29.0%	29.3%	29.8%

S.15 Placed 18 year old applicants from the UK by sex: 1 day after A level results day

Placed 18 year old applicants: entry rate (indexed to 100 = Men)

Applicant Status	Sex	2010	2011	2012	2013	2014	2015	2016	2017	2018	2019
Placed	Men	100	100	100	100	100	100	100	100	100	100
	Women	130	130	136	133	135	138	137	138	137	138

S.16 Placed applicants from England by sex: 1 day after A level results day

Placed applicants: change relative to 2018 cycle totals

Men
Women



Note: The percentage change is not plotted in the above chart for groups with fewer than 30 placed applicants in any one cycle.

S.17 Placed applicants from England by sex: 1 day after A level results day

Applicant Status	Sex	2010	2011	2012	2013	2014	2015	2016	2017	2018	2019
Placed	Men	128,750	132,870	119,220	132,320	133,570	136,530	139,860	137,130	132,810	130,180
	Women	162,660	165,160	152,410	166,550	171,460	177,830	183,150	179,870	176,010	174,140
	All	291,410	298,040	271,620	298,880	305,030	314,360	323,010	317,000	308,820	304,310

S.18 Placed applicants from England by sex: 1 day after A level results day

Placed applicants: change relative to 2018 cycle totals

Applicant Status	Sex	2010	2011	2012	2013	2014	2015	2016	2017	2018	2019
Placed	Men	-3%	0%	-10%	-0%	1%	3%	5%	3%	0%	-2%
	Women	-8%	-6%	-13%	-5%	-3%	1%	4%	2%	0%	-1%
	All	-6%	-3%	-12%	-3%	-1%	2%	5%	3%	0%	-1%

Note: The percentage change is not recorded in the above table for groups with fewer than 10 placed applicants in that cycle or in the 2018 cycle.

S.19 Placed applicants from England by sex: 1 day after A level results day

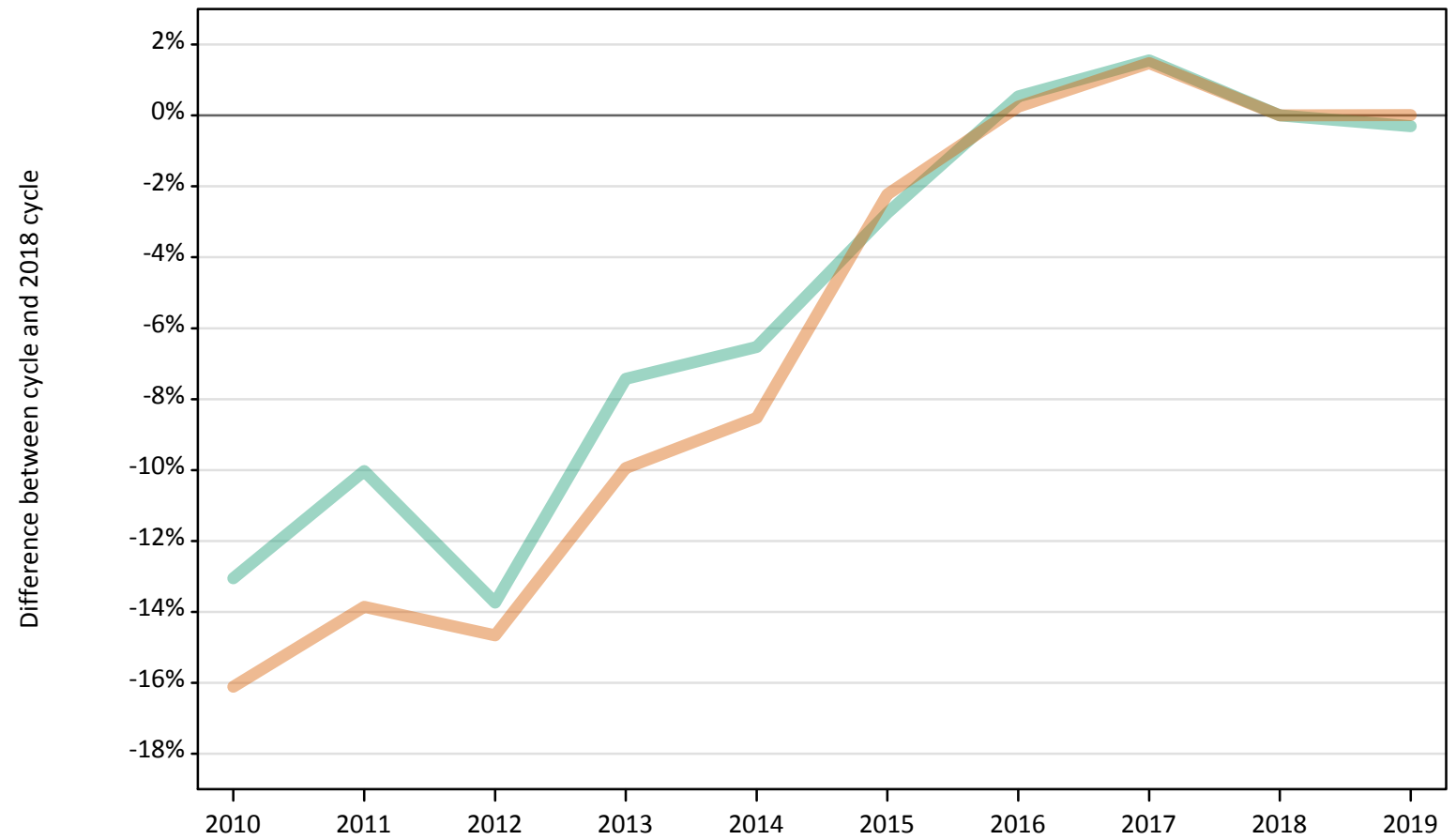
Placed applicants: absolute change relative to 2018 cycle totals

Applicant Status	Sex	2010	2011	2012	2013	2014	2015	2016	2017	2018	2019
Placed	Men	-4,060	60	-13,590	-480	760	3,720	7,050	4,320	0	-2,630
	Women	-13,350	-10,850	-23,610	-9,460	-4,550	1,820	7,140	3,860	0	-1,880
	All	-17,410	-10,790	-37,200	-9,940	-3,790	5,540	14,190	8,180	0	-4,510

S.20 Placed 18 year old applicants from England by sex: 1 day after A level results day

Placed 18 year old applicants: change relative to 2018 cycle totals

Men
Women



Note: The percentage change is not plotted in the above chart for groups with fewer than 30 placed applicants in any one cycle.

S.21 Placed 18 year old applicants from England by sex: 1 day after A level results day

Applicant Status	Sex	2010	2011	2012	2013	2014	2015	2016	2017	2018	2019
Placed	Men	68,780	71,170	68,240	73,230	73,940	76,930	79,530	80,330	79,110	78,870
	Women	85,490	87,790	86,970	91,780	93,220	99,650	102,160	103,420	101,910	101,920
	All	154,270	158,960	155,210	165,010	167,160	176,580	181,690	183,750	181,020	180,790

S.22 Placed 18 year old applicants from England by sex: 1 day after A level results day

Placed 18 year old applicants: change relative to 2018 cycle totals

Applicant Status	Sex	2010	2011	2012	2013	2014	2015	2016	2017	2018	2019
Placed	Men	-13%	-10%	-14%	-7%	-7%	-3%	1%	2%	0%	-0%
	Women	-16%	-14%	-15%	-10%	-9%	-2%	0%	1%	0%	0%
	All	-15%	-12%	-14%	-9%	-8%	-2%	0%	2%	0%	-0%

Note: The percentage change is not recorded in the above table for groups with fewer than 10 placed applicants in that cycle or in the 2018 cycle.

S.23 Placed 18 year old applicants from England by sex: 1 day after A level results day

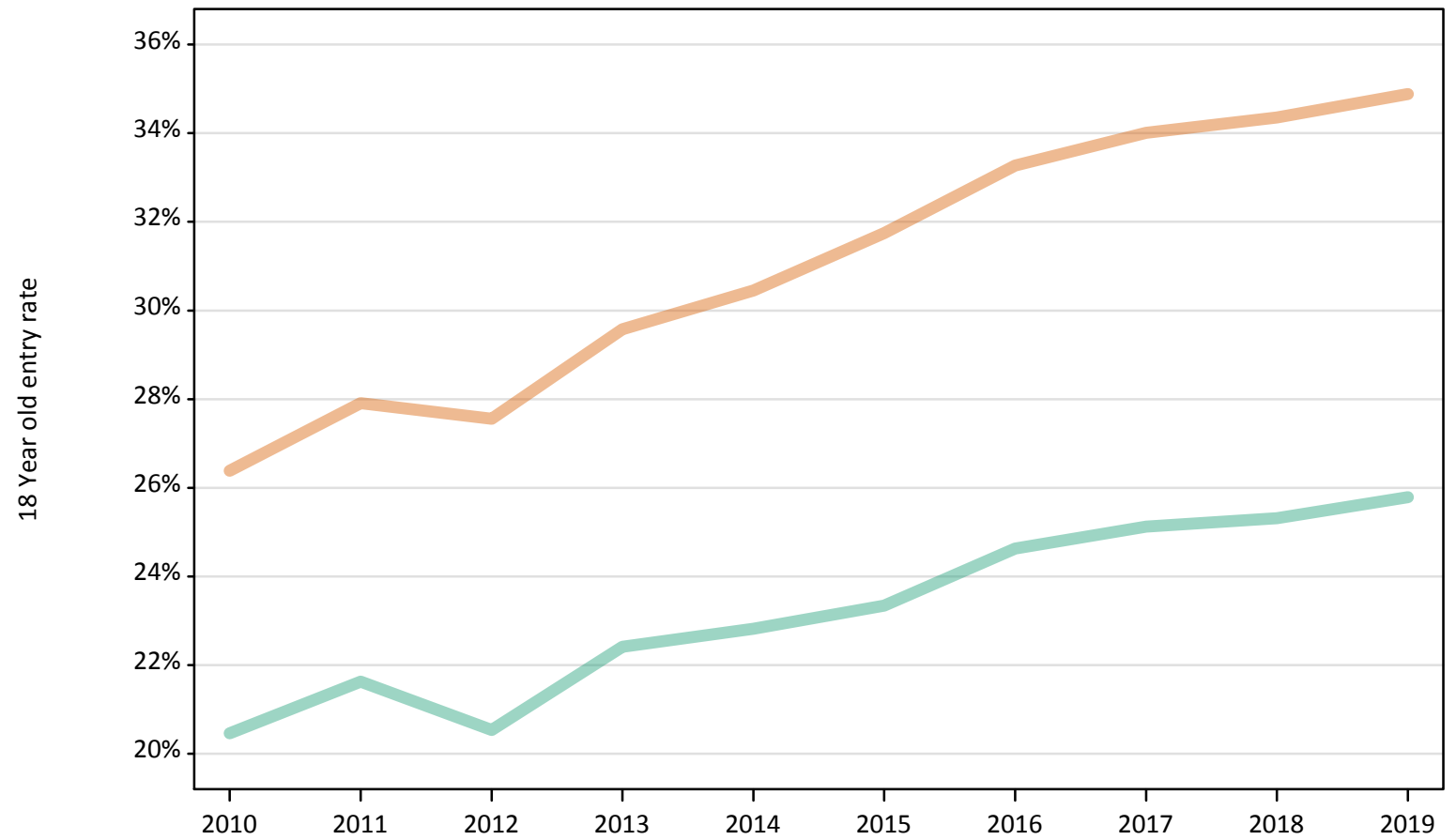
Placed 18 year old applicants: absolute change relative to 2018 cycle totals

Applicant Status	Sex	2010	2011	2012	2013	2014	2015	2016	2017	2018	2019
Placed	Men	-10,330	-7,930	-10,870	-5,880	-5,170	-2,170	420	1,230	0	-240
	Women	-16,420	-14,120	-14,940	-10,130	-8,700	-2,270	250	1,510	0	10
	All	-26,740	-22,060	-25,810	-16,010	-13,860	-4,440	670	2,740	0	-230

S.24 Placed 18 year old applicants from England by sex: 1 day after A level results day

Placed 18 year old applicants: entry rate

Men
Women



S.25 Placed 18 year old applicants from England by sex: 1 day after A level results day

Placed 18 year old applicants: entry rate

Applicant Status	Sex	2010	2011	2012	2013	2014	2015	2016	2017	2018	2019
Placed	Men	20.5%	21.6%	20.5%	22.4%	22.8%	23.3%	24.6%	25.1%	25.3%	25.8%
	Women	26.4%	27.9%	27.6%	29.6%	30.5%	31.7%	33.3%	34.0%	34.4%	34.9%
	All	23.4%	24.7%	24.0%	25.9%	26.5%	27.4%	28.8%	29.5%	29.7%	30.2%

S.26 Placed 18 year old applicants from England by sex: 1 day after A level results day

Placed 18 year old applicants: entry rate (indexed to 100 = Men)

Applicant Status	Sex	2010	2011	2012	2013	2014	2015	2016	2017	2018	2019
Placed	Men	100	100	100	100	100	100	100	100	100	100
	Women	129	129	134	132	133	136	135	135	136	135

S.27 Placed applicants from Northern Ireland by sex: 1 day after A level results day

Placed applicants: change relative to 2018 cycle totals

Men
Women



Note: The percentage change is not plotted in the above chart for groups with fewer than 30 placed applicants in any one cycle.

S.28 Placed applicants from Northern Ireland by sex: 1 day after A level results day

Applicant Status	Sex	2010	2011	2012	2013	2014	2015	2016	2017	2018	2019
Placed	Men	4,770	5,040	4,340	5,150	5,170	5,080	5,390	5,040	4,880	4,740
	Women	6,390	6,400	5,950	6,660	6,590	6,710	7,150	7,070	6,670	6,740
	All	11,150	11,450	10,290	11,800	11,770	11,790	12,540	12,110	11,560	11,480

S.29 Placed applicants from Northern Ireland by sex: 1 day after A level results day

Placed applicants: change relative to 2018 cycle totals

Applicant Status	Sex	2010	2011	2012	2013	2014	2015	2016	2017	2018	2019
Placed	Men	-2%	3%	-11%	5%	6%	4%	10%	3%	0%	-3%
	Women	-4%	-4%	-11%	-0%	-1%	1%	7%	6%	0%	1%
	All	-3%	-1%	-11%	2%	2%	2%	8%	5%	0%	-1%

Note: The percentage change is not recorded in the above table for groups with fewer than 10 placed applicants in that cycle or in the 2018 cycle.

S.30 Placed applicants from Northern Ireland by sex: 1 day after A level results day

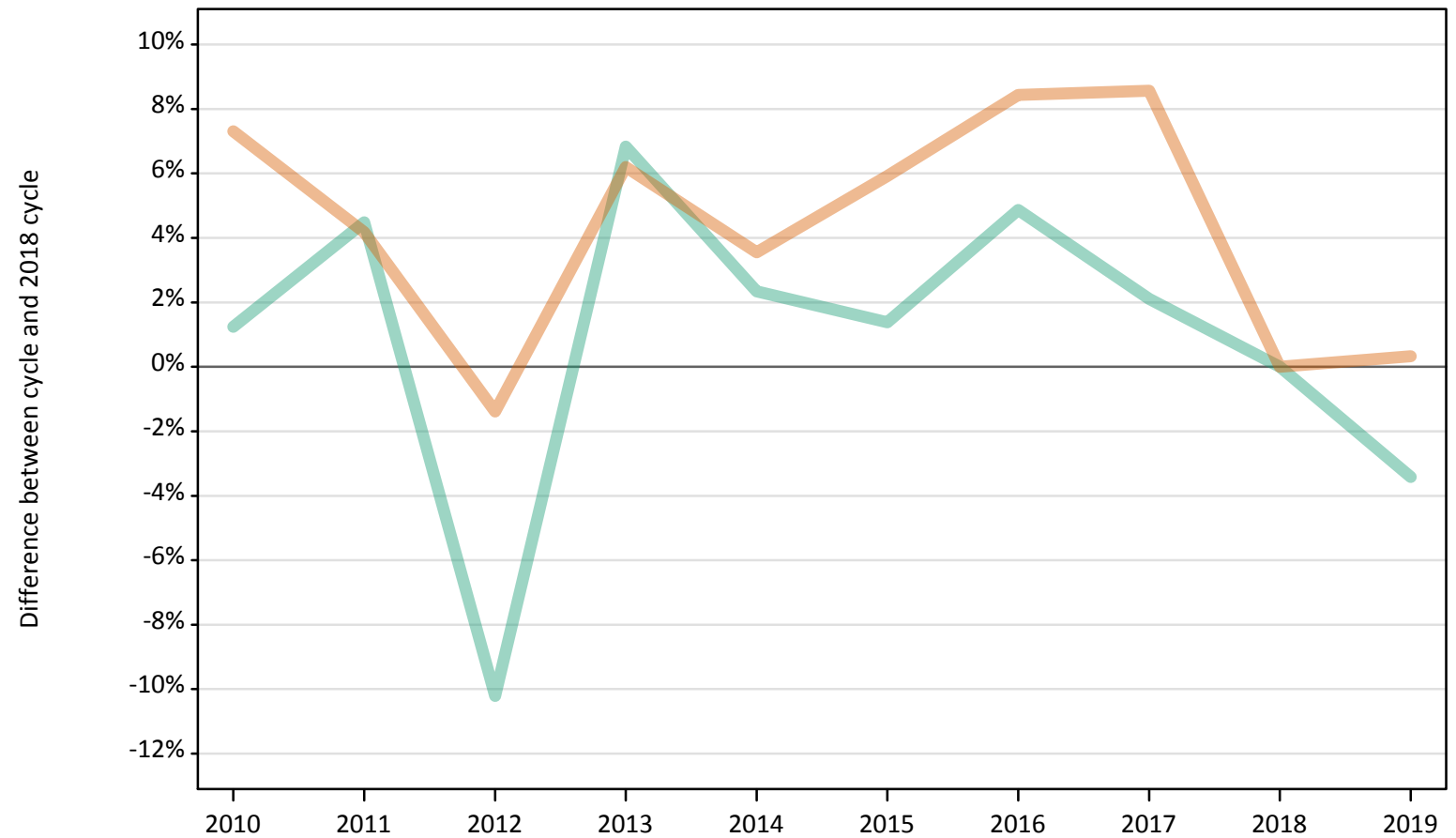
Placed applicants: absolute change relative to 2018 cycle totals

Applicant Status	Sex	2010	2011	2012	2013	2014	2015	2016	2017	2018	2019
Placed	Men	-120	160	-550	260	290	190	510	160	0	-150
	Women	-280	-270	-720	-10	-80	40	480	400	0	70
	All	-400	-110	-1,270	250	210	230	980	560	0	-70

S.31 Placed 18 year old applicants from Northern Ireland by sex: 1 day after A level results day

Placed 18 year old applicants: change relative to 2018 cycle totals

Men
Women



Note: The percentage change is not plotted in the above chart for groups with fewer than 30 placed applicants in any one cycle.

S.32 Placed 18 year old applicants from Northern Ireland by sex: 1 day after A level results day

Applicant Status	Sex	2010	2011	2012	2013	2014	2015	2016	2017	2018	2019
Placed	Men	2,940	3,030	2,600	3,100	2,970	2,940	3,040	2,960	2,900	2,800
	Women	4,260	4,140	3,920	4,220	4,110	4,210	4,310	4,310	3,970	3,980
	All	7,200	7,170	6,520	7,310	7,080	7,140	7,350	7,270	6,870	6,780

S.33 Placed 18 year old applicants from Northern Ireland by sex: 1 day after A level results day

Placed 18 year old applicants: change relative to 2018 cycle totals

Applicant Status	Sex	2010	2011	2012	2013	2014	2015	2016	2017	2018	2019
Placed	Men	1%	4%	-10%	7%	2%	1%	5%	2%	0%	-3%
	Women	7%	4%	-1%	6%	4%	6%	8%	9%	0%	0%
	All	5%	4%	-5%	6%	3%	4%	7%	6%	0%	-1%

Note: The percentage change is not recorded in the above table for groups with fewer than 10 placed applicants in that cycle or in the 2018 cycle.

S.34 Placed 18 year old applicants from Northern Ireland by sex: 1 day after A level results day

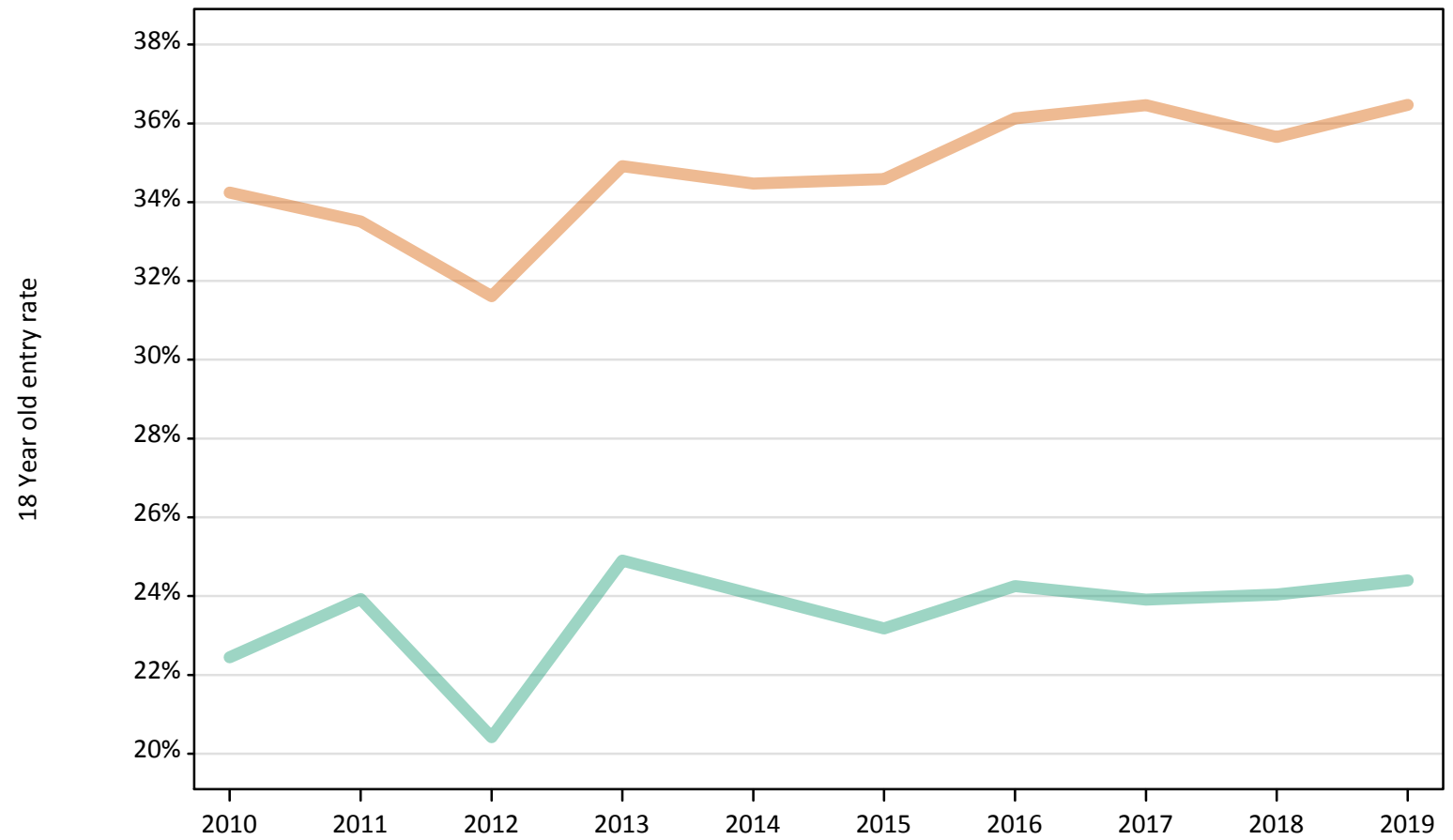
Placed 18 year old applicants: absolute change relative to 2018 cycle totals

Applicant Status	Sex	2010	2011	2012	2013	2014	2015	2016	2017	2018	2019
Placed	Men	40	130	-300	200	70	40	140	60	0	-100
	Women	290	170	-60	250	140	240	340	340	0	10
	All	330	300	-350	440	210	280	480	400	0	-90

S.35 Placed 18 year old applicants from Northern Ireland by sex: 1 day after A level results day

Placed 18 year old applicants: entry rate

Men
Women



S.36 Placed 18 year old applicants from Northern Ireland by sex: 1 day after A level results day

Placed 18 year old applicants: entry rate

Applicant Status	Sex	2010	2011	2012	2013	2014	2015	2016	2017	2018	2019
Placed	Men	22.5%	23.9%	20.4%	24.9%	24.0%	23.2%	24.3%	23.9%	24.0%	24.4%
	Women	34.2%	33.5%	31.6%	34.9%	34.5%	34.6%	36.1%	36.5%	35.7%	36.5%
	All	28.2%	28.7%	25.9%	29.8%	29.2%	28.8%	30.0%	30.0%	29.6%	30.3%

S.37 Placed 18 year old applicants from Northern Ireland by sex: 1 day after A level results day

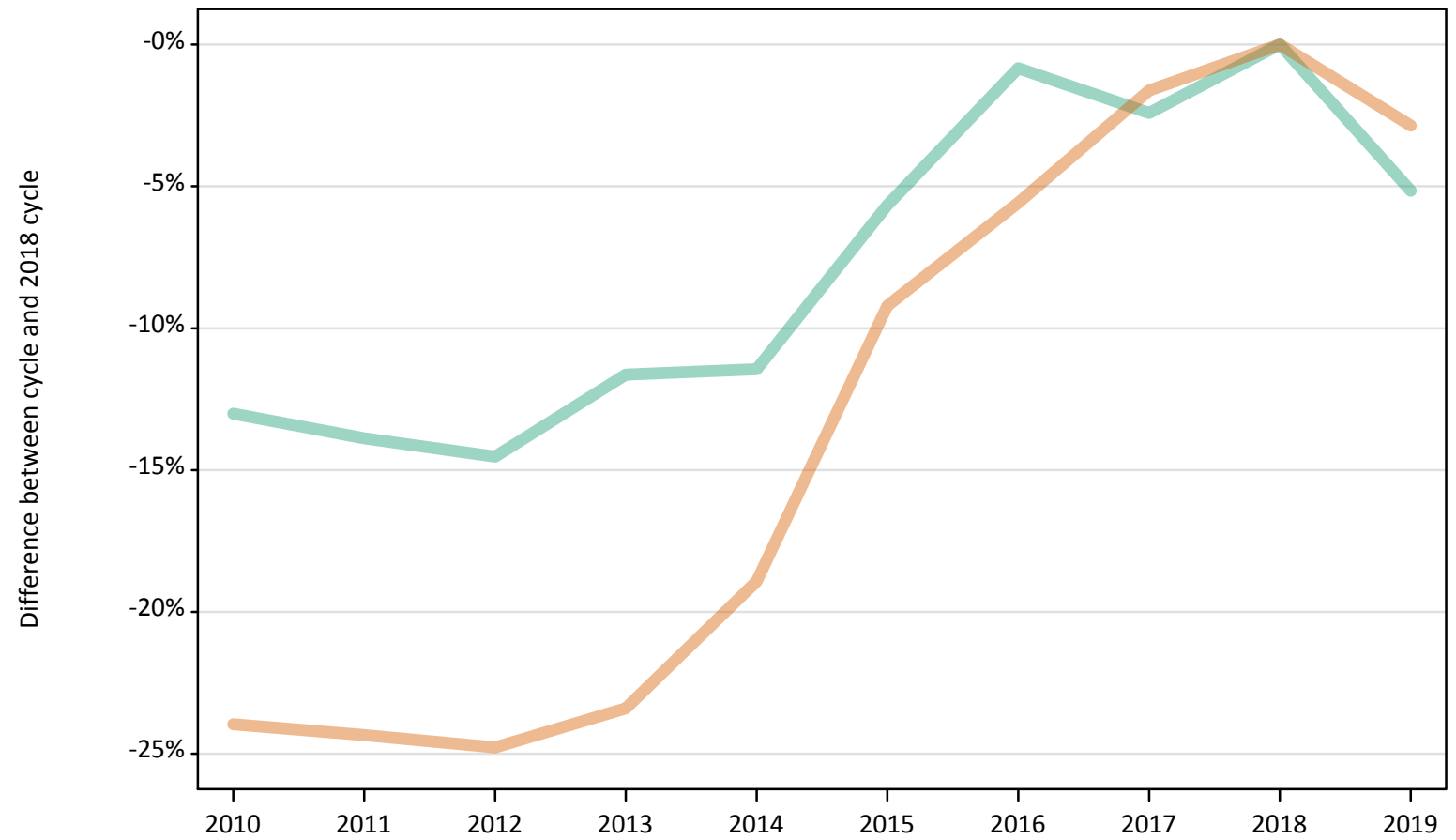
Placed 18 year old applicants: entry rate (indexed to 100 = Men)

Applicant Status	Sex	2010	2011	2012	2013	2014	2015	2016	2017	2018	2019
Placed	Men	100	100	100	100	100	100	100	100	100	100
	Women	153	140	155	140	143	149	149	152	148	149

S.38 Placed applicants from Scotland by sex: 1 day after A level results day

Placed applicants: change relative to 2018 cycle totals

Men
Women



Note: The percentage change is not plotted in the above chart for groups with fewer than 30 placed applicants in any one cycle.

S.39 Placed applicants from Scotland by sex: 1 day after A level results day

Applicant Status	Sex	2010	2011	2012	2013	2014	2015	2016	2017	2018	2019
Placed	Men	11,420	11,310	11,220	11,600	11,630	12,390	13,020	12,810	13,130	12,450
	Women	15,430	15,350	15,270	15,550	16,450	18,420	19,160	19,970	20,290	19,720
	All	26,850	26,660	26,490	27,150	28,080	30,810	32,180	32,780	33,420	32,170

S.40 Placed applicants from Scotland by sex: 1 day after A level results day

Placed applicants: change relative to 2018 cycle totals

Applicant Status	Sex	2010	2011	2012	2013	2014	2015	2016	2017	2018	2019
Placed	Men	-13%	-14%	-15%	-12%	-11%	-6%	-1%	-2%	0%	-5%
	Women	-24%	-24%	-25%	-23%	-19%	-9%	-6%	-2%	0%	-3%
	All	-20%	-20%	-21%	-19%	-16%	-8%	-4%	-2%	0%	-4%

Note: The percentage change is not recorded in the above table for groups with fewer than 10 placed applicants in that cycle or in the 2018 cycle.

S.41 Placed applicants from Scotland by sex: 1 day after A level results day

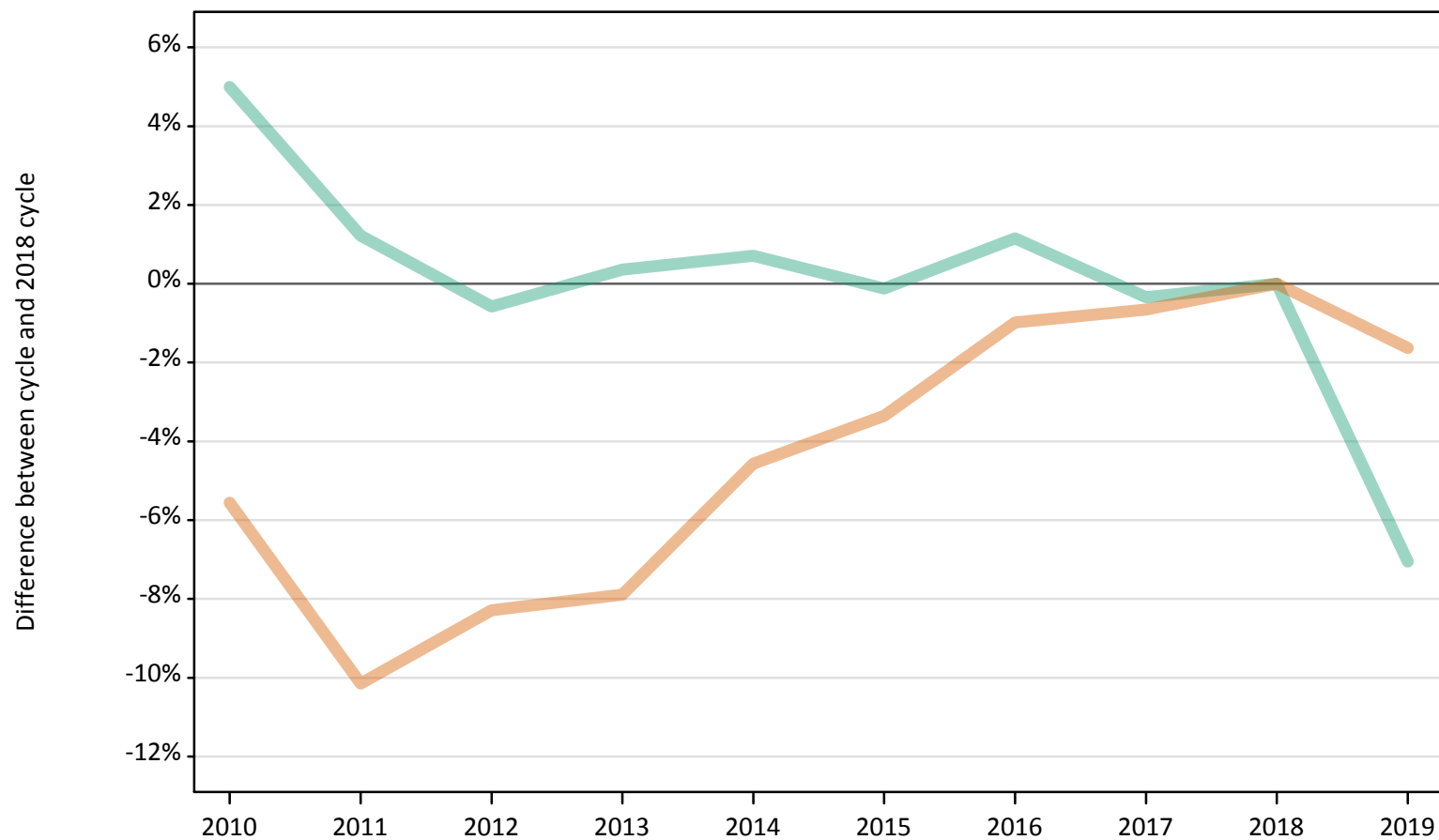
Placed applicants: absolute change relative to 2018 cycle totals

Applicant Status	Sex	2010	2011	2012	2013	2014	2015	2016	2017	2018	2019
Placed	Men	-1,710	-1,820	-1,910	-1,530	-1,500	-740	-110	-320	0	-680
	Women	-4,860	-4,940	-5,030	-4,750	-3,840	-1,870	-1,130	-330	0	-580
	All	-6,570	-6,760	-6,940	-6,280	-5,340	-2,610	-1,240	-650	0	-1,260

S.42 Placed 18 year old applicants from Scotland by sex: 1 day after A level results day

Placed 18 year old applicants: change relative to 2018 cycle totals

Men
Women



Note: The percentage change is not plotted in the above chart for groups with fewer than 30 placed applicants in any one cycle.

S.43 Placed 18 year old applicants from Scotland by sex: 1 day after A level results day

Applicant Status	Sex	2010	2011	2012	2013	2014	2015	2016	2017	2018	2019
Placed	Men	6,180	5,960	5,850	5,900	5,930	5,880	5,950	5,860	5,880	5,470
	Women	8,110	7,710	7,870	7,910	8,190	8,290	8,500	8,530	8,580	8,440
	All	14,280	13,670	13,720	13,810	14,120	14,170	14,450	14,390	14,470	13,910

S.44 Placed 18 year old applicants from Scotland by sex: 1 day after A level results day

Placed 18 year old applicants: change relative to 2018 cycle totals

Applicant Status	Sex	2010	2011	2012	2013	2014	2015	2016	2017	2018	2019
Placed	Men	5%	1%	-1%	0%	1%	-0%	1%	-0%	0%	-7%
	Women	-6%	-10%	-8%	-8%	-5%	-3%	-1%	-1%	0%	-2%
	All	-1%	-6%	-5%	-5%	-2%	-2%	-0%	-1%	0%	-4%

Note: The percentage change is not recorded in the above table for groups with fewer than 10 placed applicants in that cycle or in the 2018 cycle.

S.45 Placed 18 year old applicants from Scotland by sex: 1 day after A level results day

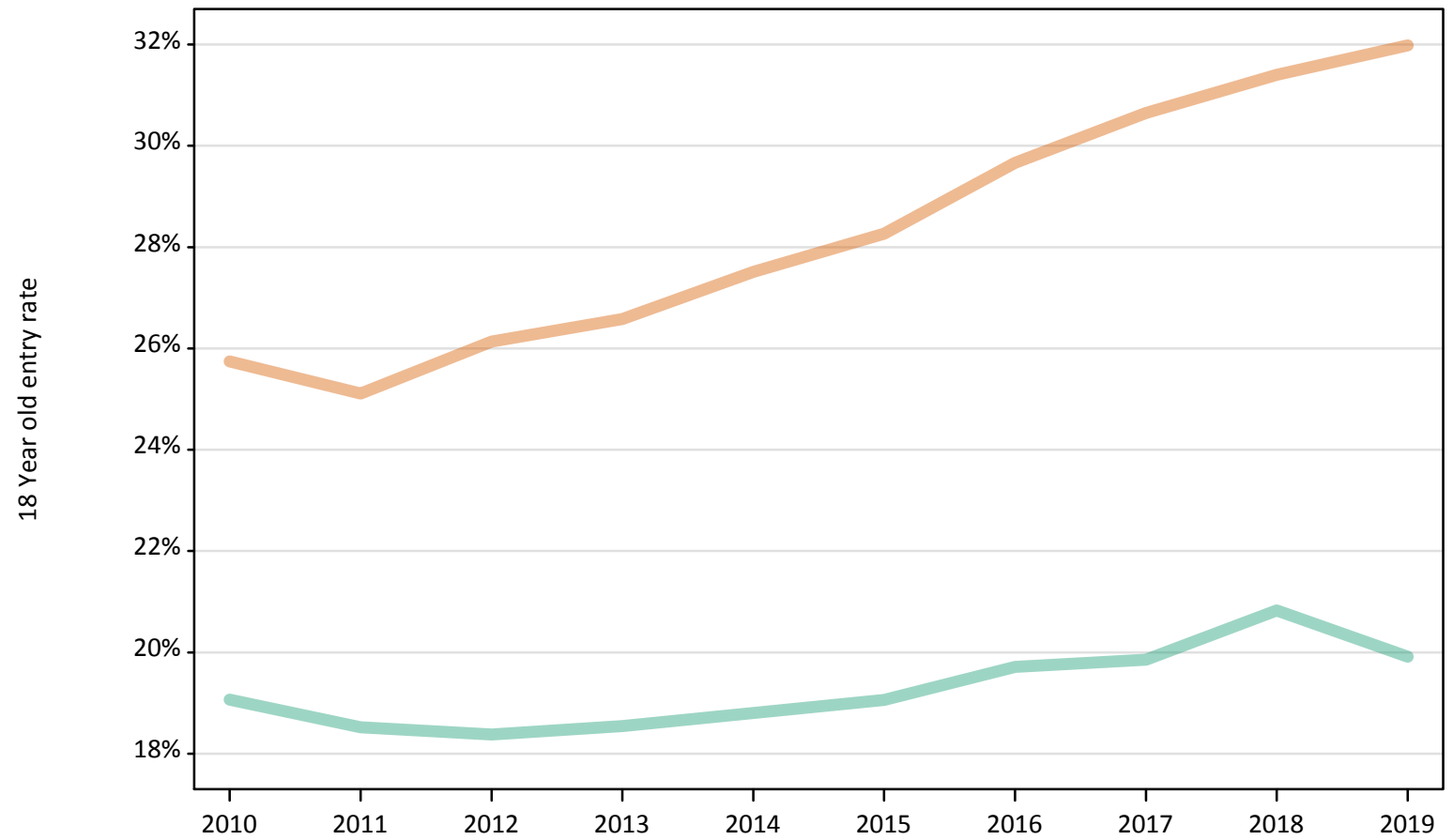
Placed 18 year old applicants: absolute change relative to 2018 cycle totals

Applicant Status	Sex	2010	2011	2012	2013	2014	2015	2016	2017	2018	2019
Placed	Men	290	70	-30	20	40	-10	70	-20	0	-420
	Women	-480	-870	-710	-680	-390	-290	-80	-60	0	-140
	All	-180	-800	-750	-660	-350	-300	-20	-80	0	-560

S.46 Placed 18 year old applicants from Scotland by sex: 1 day after A level results day

Placed 18 year old applicants: entry rate

Men
Women



S.47 Placed 18 year old applicants from Scotland by sex: 1 day after A level results day

Placed 18 year old applicants: entry rate

Applicant Status	Sex	2010	2011	2012	2013	2014	2015	2016	2017	2018	2019
Placed	Men	19.1%	18.5%	18.4%	18.5%	18.8%	19.1%	19.7%	19.9%	20.8%	19.9%
	Women	25.7%	25.1%	26.1%	26.6%	27.5%	28.3%	29.7%	30.6%	31.4%	32.0%
	All	22.4%	21.7%	22.1%	22.4%	23.0%	23.5%	24.6%	25.1%	26.0%	25.8%

S.48 Placed 18 year old applicants from Scotland by sex: 1 day after A level results day

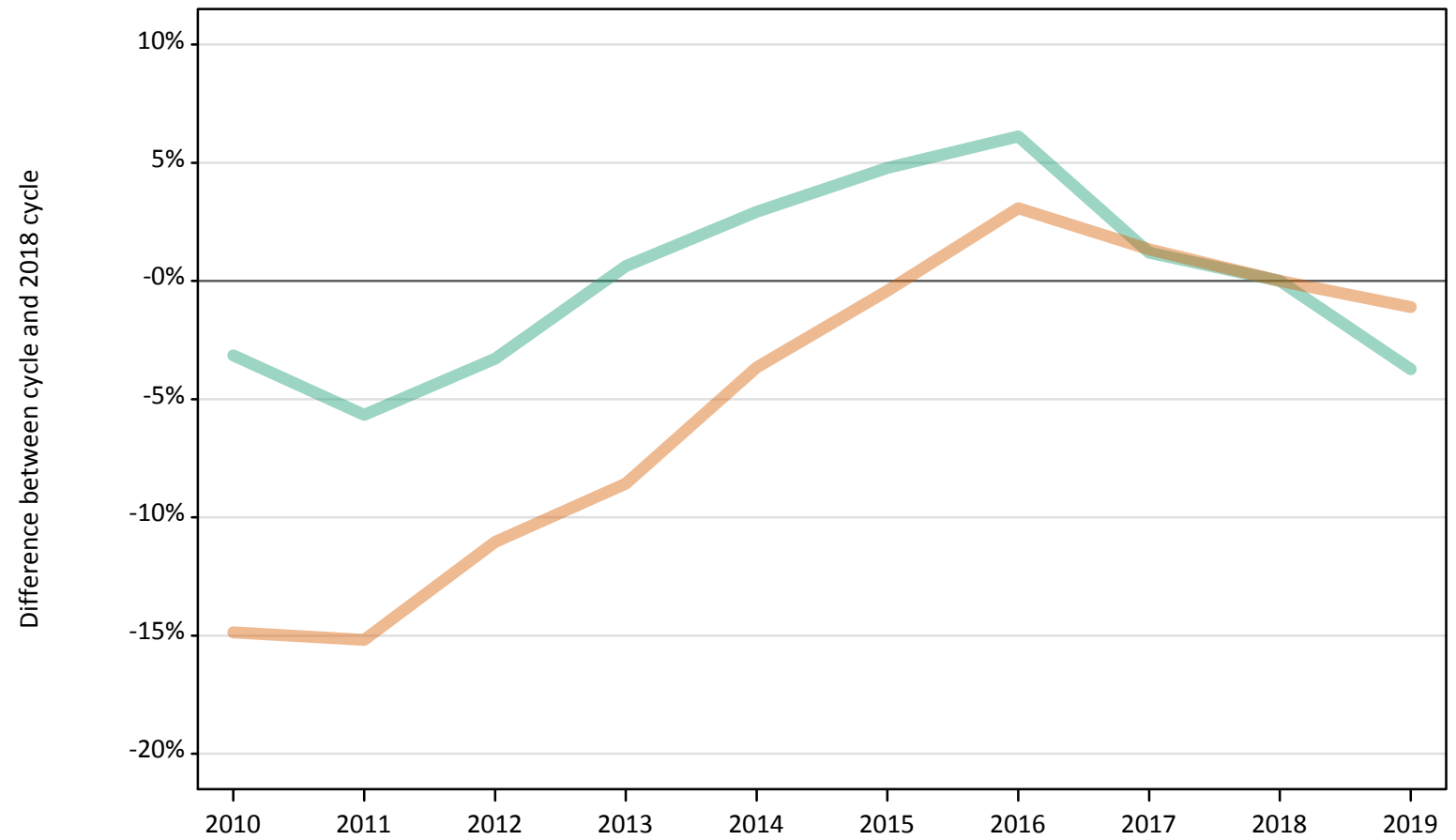
Placed 18 year old applicants: entry rate (indexed to 100 = Men)

Applicant Status	Sex	2010	2011	2012	2013	2014	2015	2016	2017	2018	2019
Placed	Men	100	100	100	100	100	100	100	100	100	100
	Women	135	136	142	143	146	148	151	154	151	161

S.49 Placed applicants from Wales by sex: 1 day after A level results day

Placed applicants: change relative to 2018 cycle totals

Men
Women



Note: The percentage change is not plotted in the above chart for groups with fewer than 30 placed applicants in any one cycle.

S.50 Placed applicants from Wales by sex: 1 day after A level results day

Applicant Status	Sex	2010	2011	2012	2013	2014	2015	2016	2017	2018	2019
Placed	Men	6,570	6,400	6,560	6,830	6,980	7,110	7,200	6,870	6,780	6,530
	Women	8,510	8,480	8,900	9,140	9,630	9,960	10,310	10,130	10,000	9,890
	All	15,080	14,880	15,460	15,970	16,620	17,070	17,510	17,000	16,780	16,420

S.51 Placed applicants from Wales by sex: 1 day after A level results day

Placed applicants: change relative to 2018 cycle totals

Applicant Status	Sex	2010	2011	2012	2013	2014	2015	2016	2017	2018	2019
Placed	Men	-3%	-6%	-3%	1%	3%	5%	6%	1%	0%	-4%
	Women	-15%	-15%	-11%	-9%	-4%	-0%	3%	1%	0%	-1%
	All	-10%	-11%	-8%	-5%	-1%	2%	4%	1%	0%	-2%

Note: The percentage change is not recorded in the above table for groups with fewer than 10 placed applicants in that cycle or in the 2018 cycle.

S.52 Placed applicants from Wales by sex: 1 day after A level results day

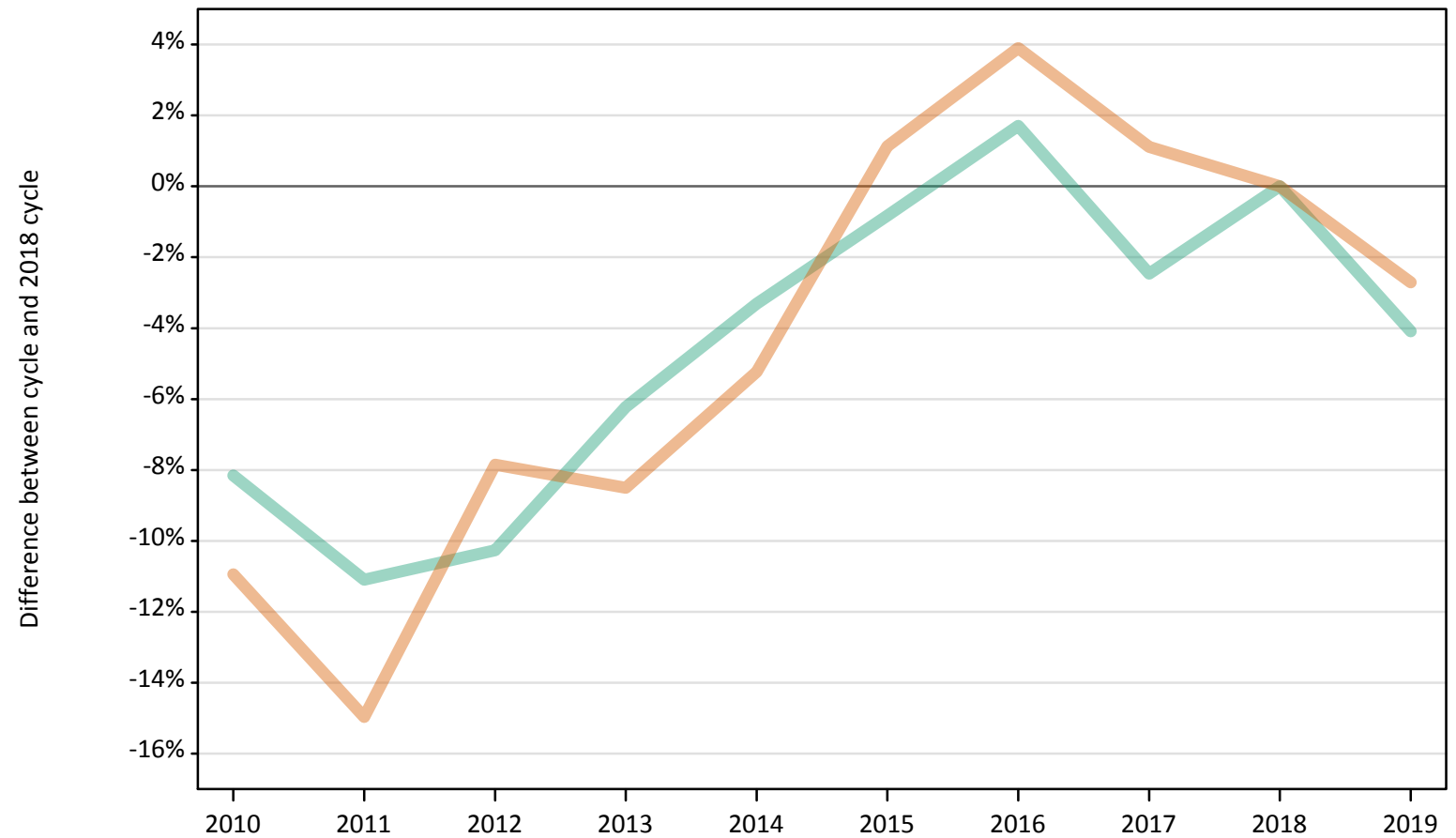
Placed applicants: absolute change relative to 2018 cycle totals

Applicant Status	Sex	2010	2011	2012	2013	2014	2015	2016	2017	2018	2019
Placed	Men	-210	-380	-220	40	200	320	420	80	0	-250
	Women	-1,490	-1,520	-1,100	-860	-370	-40	310	130	0	-110
	All	-1,700	-1,900	-1,330	-820	-170	280	720	220	0	-360

S.53 Placed 18 year old applicants from Wales by sex: 1 day after A level results day

Placed 18 year old applicants: change relative to 2018 cycle totals

Men
Women



Note: The percentage change is not plotted in the above chart for groups with fewer than 30 placed applicants in any one cycle.

S.54 Placed 18 year old applicants from Wales by sex: 1 day after A level results day

Applicant Status	Sex	2010	2011	2012	2013	2014	2015	2016	2017	2018	2019
Placed	Men	3,660	3,540	3,580	3,740	3,850	3,950	4,050	3,890	3,980	3,820
	Women	4,870	4,650	5,040	5,000	5,180	5,530	5,680	5,530	5,470	5,320
	All	8,530	8,190	8,610	8,740	9,030	9,480	9,730	9,410	9,450	9,140

S.55 Placed 18 year old applicants from Wales by sex: 1 day after A level results day

Placed 18 year old applicants: change relative to 2018 cycle totals

Applicant Status	Sex	2010	2011	2012	2013	2014	2015	2016	2017	2018	2019
Placed	Men	-8%	-11%	-10%	-6%	-3%	-1%	2%	-2%	0%	-4%
	Women	-11%	-15%	-8%	-9%	-5%	1%	4%	1%	0%	-3%
	All	-10%	-13%	-9%	-8%	-4%	0%	3%	-0%	0%	-3%

Note: The percentage change is not recorded in the above table for groups with fewer than 10 placed applicants in that cycle or in the 2018 cycle.

S.56 Placed 18 year old applicants from Wales by sex: 1 day after A level results day

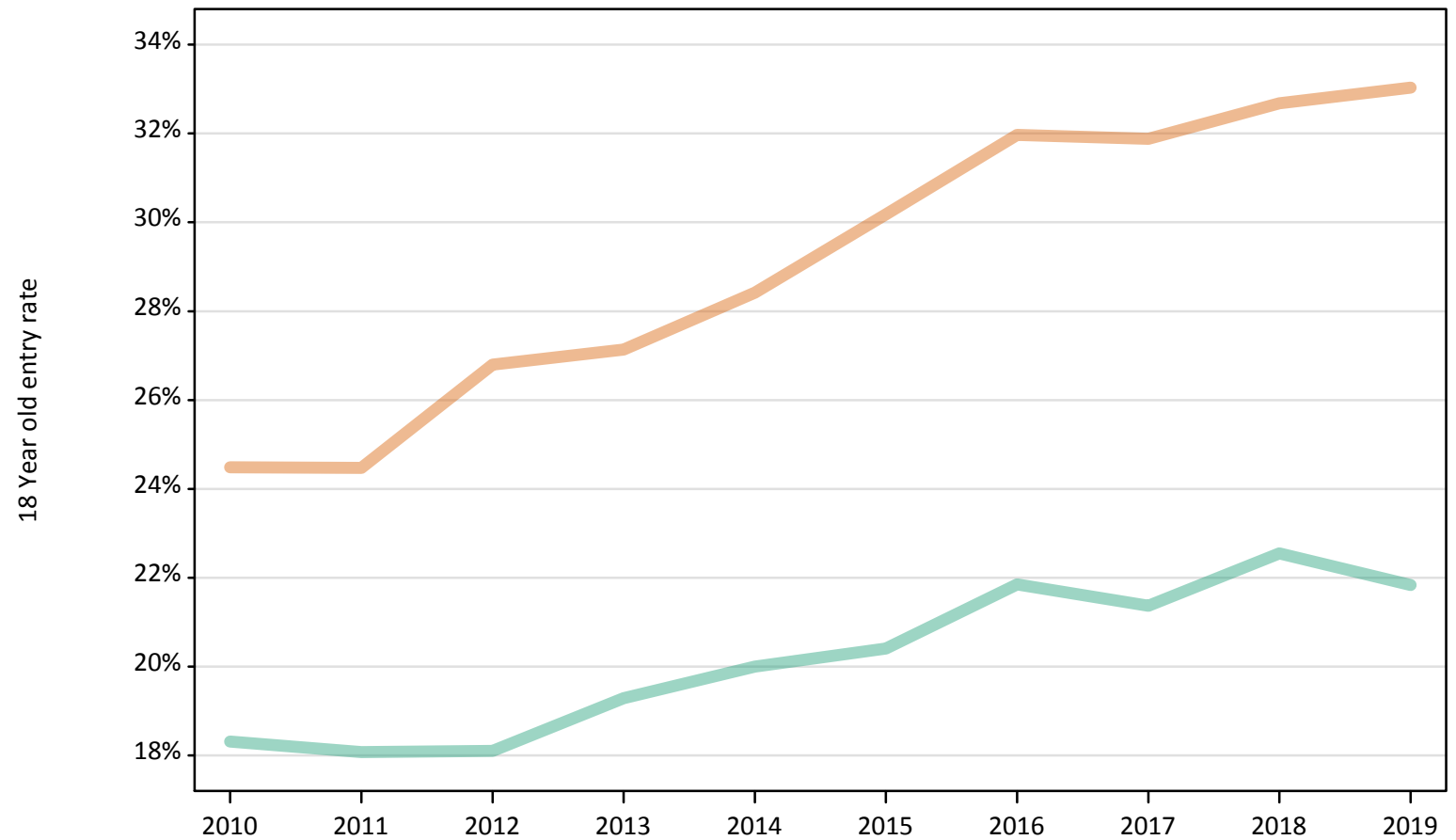
Placed 18 year old applicants: absolute change relative to 2018 cycle totals

Applicant Status	Sex	2010	2011	2012	2013	2014	2015	2016	2017	2018	2019
Placed	Men	-330	-440	-410	-250	-130	-30	70	-100	0	-160
	Women	-600	-820	-430	-470	-290	60	210	60	0	-150
	All	-920	-1,260	-840	-710	-420	30	280	-40	0	-310

S.57 Placed 18 year old applicants from Wales by sex: 1 day after A level results day

Placed 18 year old applicants: entry rate

Men
Women



S.58 Placed 18 year old applicants from Wales by sex: 1 day after A level results day

Placed 18 year old applicants: entry rate

Applicant Status	Sex	2010	2011	2012	2013	2014	2015	2016	2017	2018	2019
Placed	Men	18.3%	18.1%	18.1%	19.3%	20.0%	20.4%	21.9%	21.4%	22.5%	21.8%
	Women	24.5%	24.5%	26.8%	27.1%	28.4%	30.2%	32.0%	31.9%	32.7%	33.0%
	All	21.4%	21.2%	22.3%	23.1%	24.1%	25.2%	26.8%	26.5%	27.5%	27.2%

S.59 Placed 18 year old applicants from Wales by sex: 1 day after A level results day

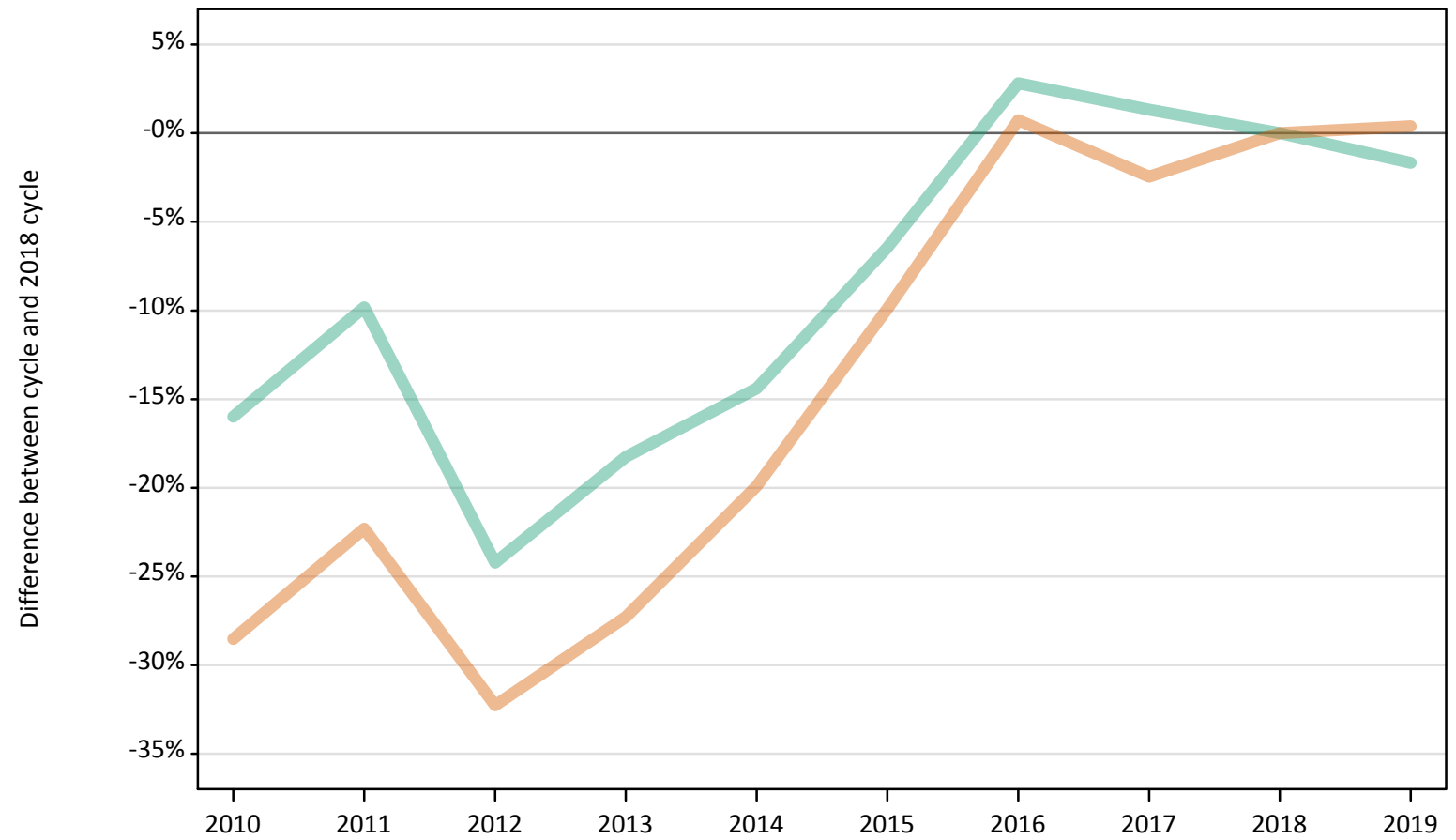
Placed 18 year old applicants: entry rate (indexed to 100 = Men)

Applicant Status	Sex	2010	2011	2012	2013	2014	2015	2016	2017	2018	2019
Placed	Men	100	100	100	100	100	100	100	100	100	100
	Women	134	135	148	141	142	148	146	149	145	151

S.60 Placed applicants from the EU (excluding the UK) by sex: 1 day after A level results day

Placed applicants: change relative to 2018 cycle totals

Men
Women



Note: The percentage change is not plotted in the above chart for groups with fewer than 30 placed applicants in any one cycle.

S.61 Placed applicants from the EU (excluding the UK) by sex: 1 day after A level results day

Applicant Status	Sex	2010	2011	2012	2013	2014	2015	2016	2017	2018	2019
Placed	Men	9,340	10,020	8,420	9,090	9,510	10,400	11,430	11,260	11,110	10,930
	Women	11,390	12,380	10,790	11,590	12,760	14,360	16,050	15,540	15,930	16,000
	All	20,720	22,400	19,210	20,670	22,280	24,750	27,480	26,810	27,050	26,930

S.62 Placed applicants from the EU (excluding the UK) by sex: 1 day after A level results day

Placed applicants: change relative to 2018 cycle totals

Applicant Status	Sex	2010	2011	2012	2013	2014	2015	2016	2017	2018	2019
Placed	Men	-16%	-10%	-24%	-18%	-14%	-6%	3%	1%	0%	-2%
	Women	-29%	-22%	-32%	-27%	-20%	-10%	1%	-2%	0%	0%
	All	-23%	-17%	-29%	-24%	-18%	-8%	2%	-1%	0%	-0%

Note: The percentage change is not recorded in the above table for groups with fewer than 10 placed applicants in that cycle or in the 2018 cycle.

S.63 Placed applicants from the EU (excluding the UK) by sex: 1 day after A level results day

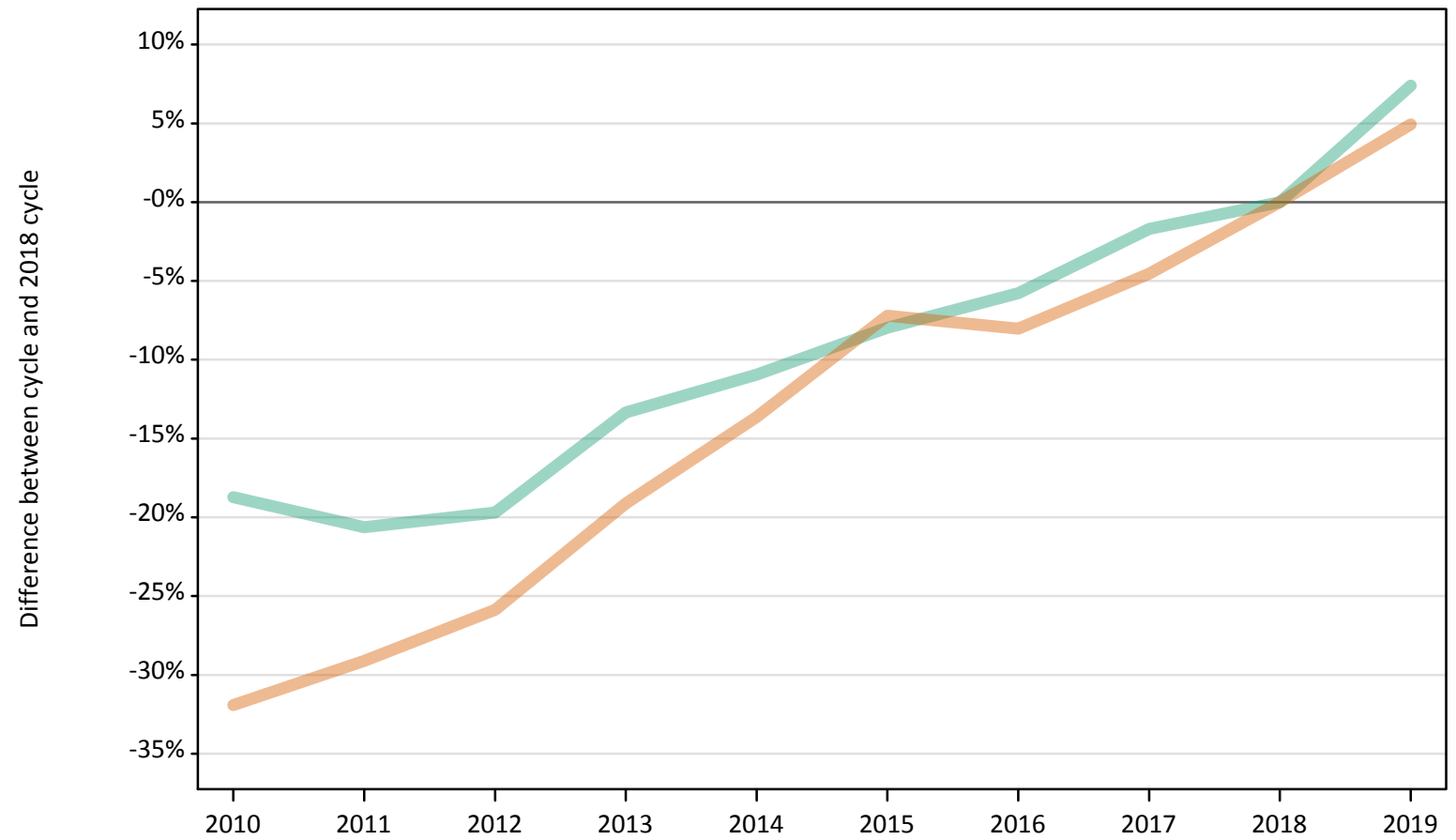
Placed applicants: absolute change relative to 2018 cycle totals

Applicant Status	Sex	2010	2011	2012	2013	2014	2015	2016	2017	2018	2019
Placed	Men	-1,780	-1,090	-2,690	-2,030	-1,600	-720	310	150	0	-190
	Women	-4,550	-3,560	-5,140	-4,350	-3,170	-1,580	120	-390	0	60
	All	-6,330	-4,650	-7,830	-6,380	-4,770	-2,290	430	-240	0	-120

S.64 Placed applicants from overseas (not EU) by sex: 1 day after A level results day

Placed applicants: change relative to 2018 cycle totals

Men
Women



Note: The percentage change is not plotted in the above chart for groups with fewer than 30 placed applicants in any one cycle.

S.65 Placed applicants from overseas (not EU) by sex: 1 day after A level results day

Applicant Status	Sex	2010	2011	2012	2013	2014	2015	2016	2017	2018	2019
Placed	Men	11,920	11,640	11,770	12,710	13,060	13,490	13,820	14,410	14,660	15,750
	Women	12,100	12,600	13,170	14,370	15,350	16,490	16,340	16,960	17,770	18,640
	All	24,020	24,230	24,950	27,080	28,410	29,980	30,160	31,380	32,430	34,390

S.66 Placed applicants from overseas (not EU) by sex: 1 day after A level results day

Placed applicants: change relative to 2018 cycle totals

Applicant Status	Sex	2010	2011	2012	2013	2014	2015	2016	2017	2018	2019
Placed	Men	-19%	-21%	-20%	-13%	-11%	-8%	-6%	-2%	0%	7%
	Women	-32%	-29%	-26%	-19%	-14%	-7%	-8%	-5%	0%	5%
	All	-26%	-25%	-23%	-17%	-12%	-8%	-7%	-3%	0%	6%

Note: The percentage change is not recorded in the above table for groups with fewer than 10 placed applicants in that cycle or in the 2018 cycle.

S.67 Placed applicants from overseas (not EU) by sex: 1 day after A level results day

Placed applicants: absolute change relative to 2018 cycle totals

Applicant Status	Sex	2010	2011	2012	2013	2014	2015	2016	2017	2018	2019
Placed	Men	-2,750	-3,020	-2,890	-1,960	-1,610	-1,170	-850	-250	0	1,090
	Women	-5,670	-5,170	-4,600	-3,400	-2,420	-1,280	-1,430	-810	0	880
	All	-8,410	-8,200	-7,490	-5,360	-4,030	-2,450	-2,270	-1,060	0	1,960