

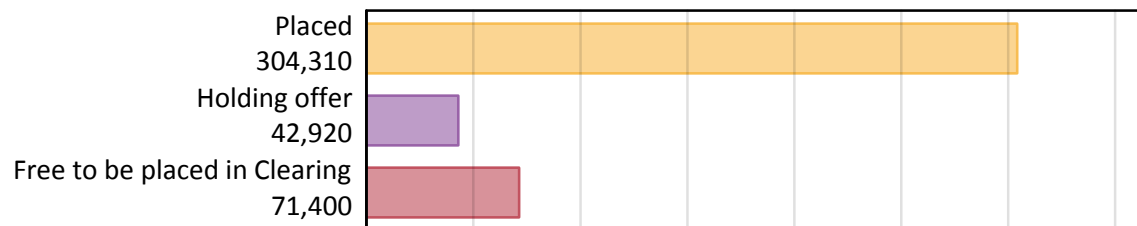
Daily Clearing Analysis: Overview

Analysis at 00:05 on Friday 16 August 2019 (1 day after A level results day)

A.1 Applicants by type and status from England, 2019 cycle

Applicant type	Status	2019
Main scheme	Placed (Clearing)	9,810
	Placed (Adjustment)	160
	Placed (Firm)	258,850
	Placed (Insurance)	23,480
	Placed (Other)	8,510
	Holding offer	42,920
	Free to be placed in Clearing	71,400
Direct to Clearing	Placed (Direct to Clearing)	3,510
	Other (Direct to Clearing)	7,460
All applicants	Placed	304,310

A.2 Summary of applicants who are placed, holding offers or free to be placed in Clearing (England)



A.3 All placed applicants from England: 1 day after A level results day

All placed applicants: difference between cycle and 2018 cycle



Note: The percentage change is not plotted in the above chart for groups with fewer than 30 placed applicants in any one cycle.

A.4 All placed applicants from England: 1 day after A level results day

All placed applicants: applicants at 1 day after A level results day

Applicant type	Status	2010	2011	2012	2013	2014	2015	2016	2017	2018	2019
All applicants	Placed	291,410	298,040	271,620	298,880	305,030	314,360	323,010	317,000	308,820	304,310

A.5 All placed applicants from England: 1 day after A level results day

All placed applicants: difference between cycle and 2018 cycle

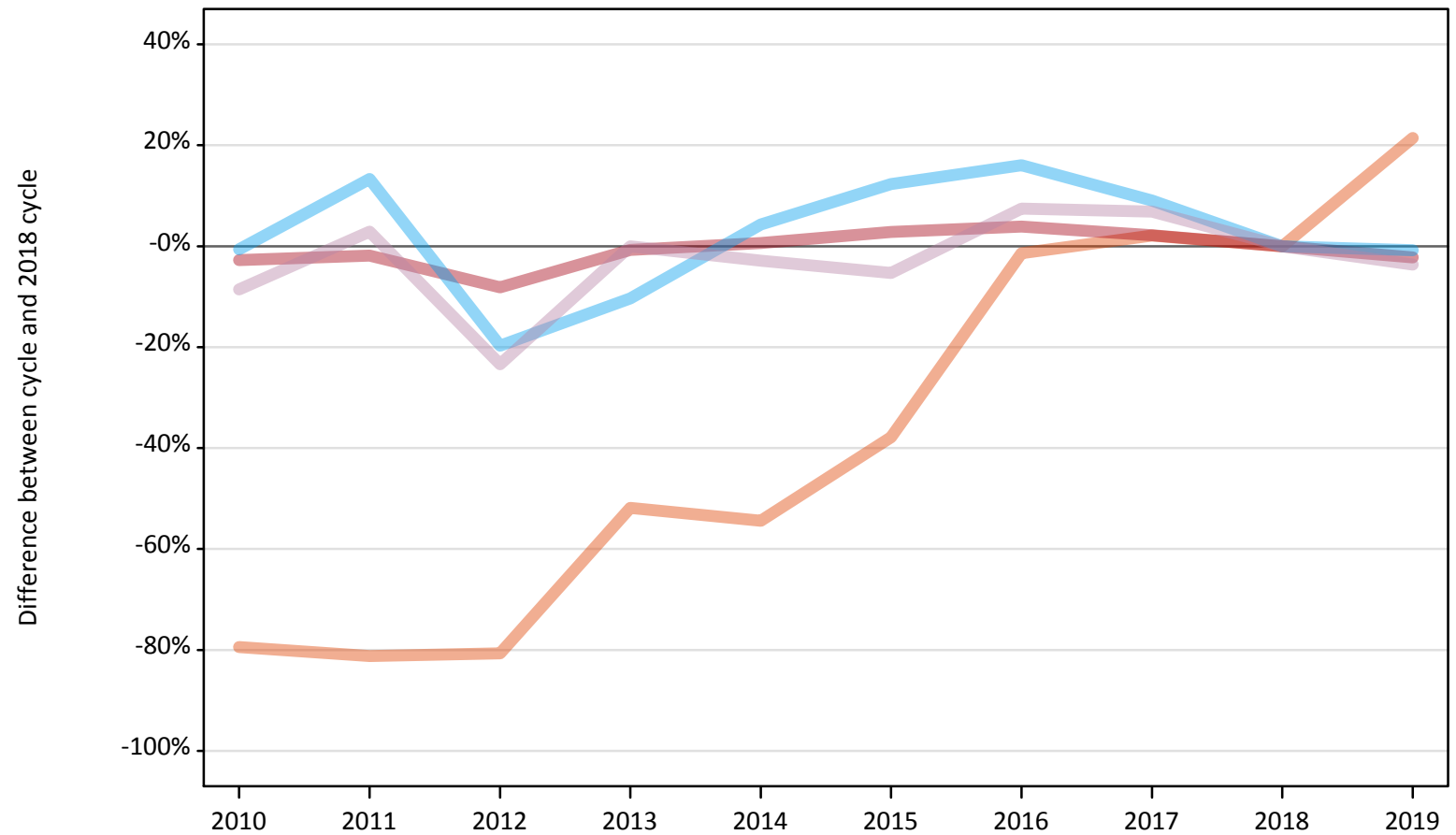
Applicant type	Status	2010	2011	2012	2013	2014	2015	2016	2017	2018	2019
All applicants	Placed	-6%	-3%	-12%	-3%	-1%	2%	5%	3%	0%	-1%

Note: The percentage change is not recorded in the above table for groups with fewer than 10 placed applicants in that cycle or in the 2018 cycle.

A.6 Placed main scheme applicants from England: 1 day after A level results day

All Main scheme placed routes (excluding Adjustment): difference between cycle and 2018 cycle

- Placed (Clearing)
- Placed (Firm)
- Placed (Insurance)
- Placed (Other)



Note: The percentage change is not plotted in the above chart for groups with fewer than 30 placed applicants in any one cycle.

A.7 Placed main scheme applicants from England: 1 day after A level results day

All Main scheme placed routes (excluding Adjustment): applicants at 1 day after A level results day

Applicant type	Status	2010	2011	2012	2013	2014	2015	2016	2017	2018	2019
Main scheme	Placed (Clearing)	1,660	1,520	1,560	3,890	3,680	5,020	7,960	8,240	8,070	9,810
	Placed (Firm)	257,380	259,820	243,180	262,770	266,290	272,170	274,980	270,380	264,660	258,850
	Placed (Insurance)	23,530	26,830	19,000	21,220	24,690	26,580	27,470	25,810	23,670	23,480
	Placed (Other)	8,070	9,080	6,760	8,820	8,570	8,360	9,490	9,430	8,830	8,510

A.8 Placed main scheme applicants from England: 1 day after A level results day

All Main scheme placed routes (excluding Adjustment): difference between cycle and 2018 cycle

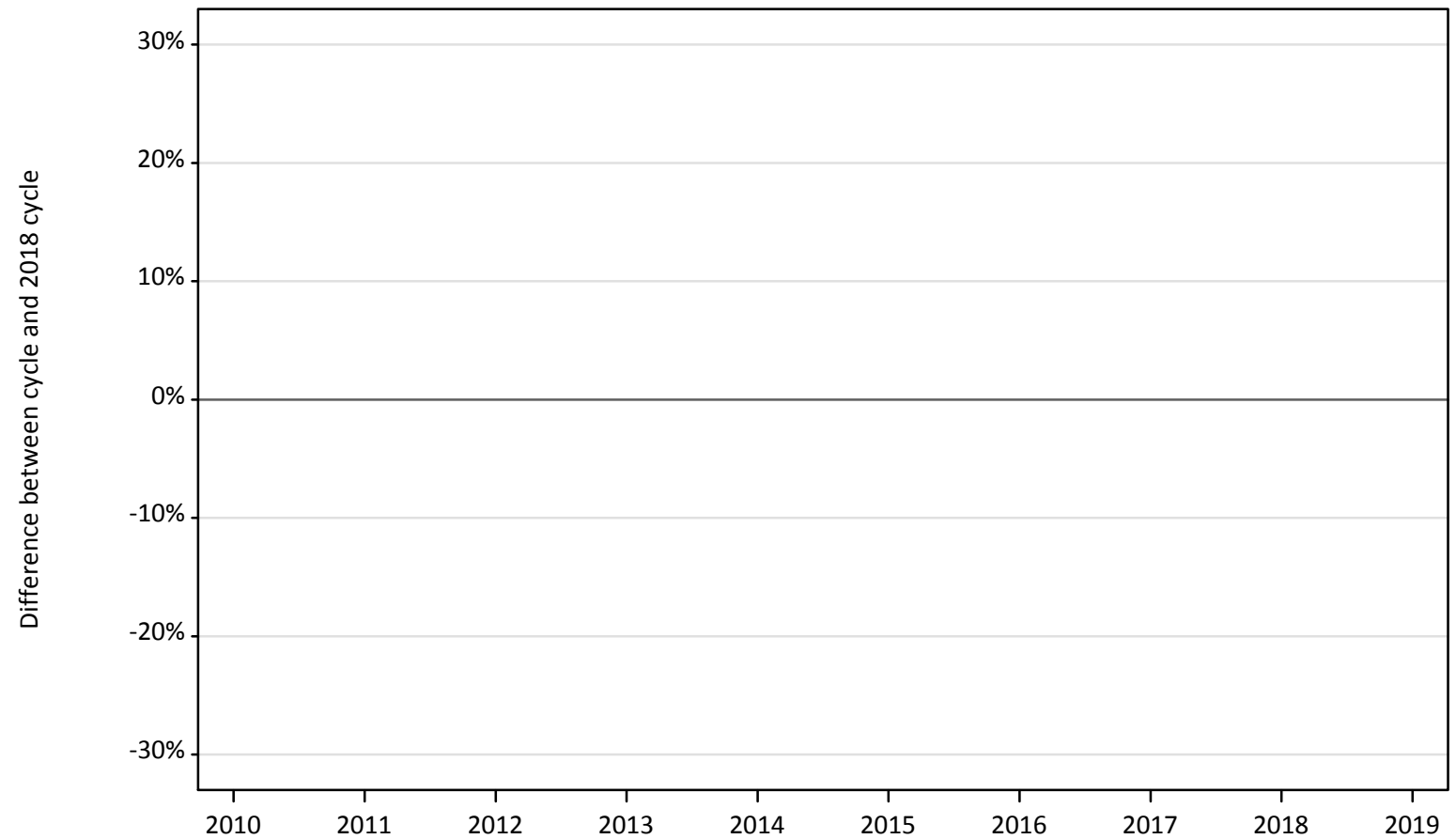
Applicant type	Status	2010	2011	2012	2013	2014	2015	2016	2017	2018	2019
Main scheme	Placed (Clearing)	-79%	-81%	-81%	-52%	-54%	-38%	-1%	2%	0%	21%
	Placed (Firm)	-3%	-2%	-8%	-1%	1%	3%	4%	2%	0%	-2%
	Placed (Insurance)	-1%	13%	-20%	-10%	4%	12%	16%	9%	0%	-1%
	Placed (Other)	-9%	3%	-23%	-0%	-3%	-5%	7%	7%	0%	-4%

Note: The percentage change is not recorded in the above table for groups with fewer than 10 placed applicants in that cycle or in the 2018 cycle.

A.9 Main scheme applicants placed through adjustment: 1 day after A level results day

Placed through adjustment: difference between cycle and 2018 cycle

Placed (Adjustment)



Note: The percentage change is not plotted in the above chart for groups with fewer than 30 placed applicants in any one cycle.

A.10 Main scheme applicants placed through adjustment: 1 day after A level results day

Placed through adjustment: applicants at 1 day after A level results day

Applicant type	Status	2010	2011	2012	2013	2014	2015	2016	2017	2018	2019
Main scheme	Placed (Adjustment)	20	50	120	270	260	340	250	340	310	160

A.11 Main scheme applicants placed through adjustment: 1 day after A level results day

Placed through adjustment: difference between cycle and 2018 cycle

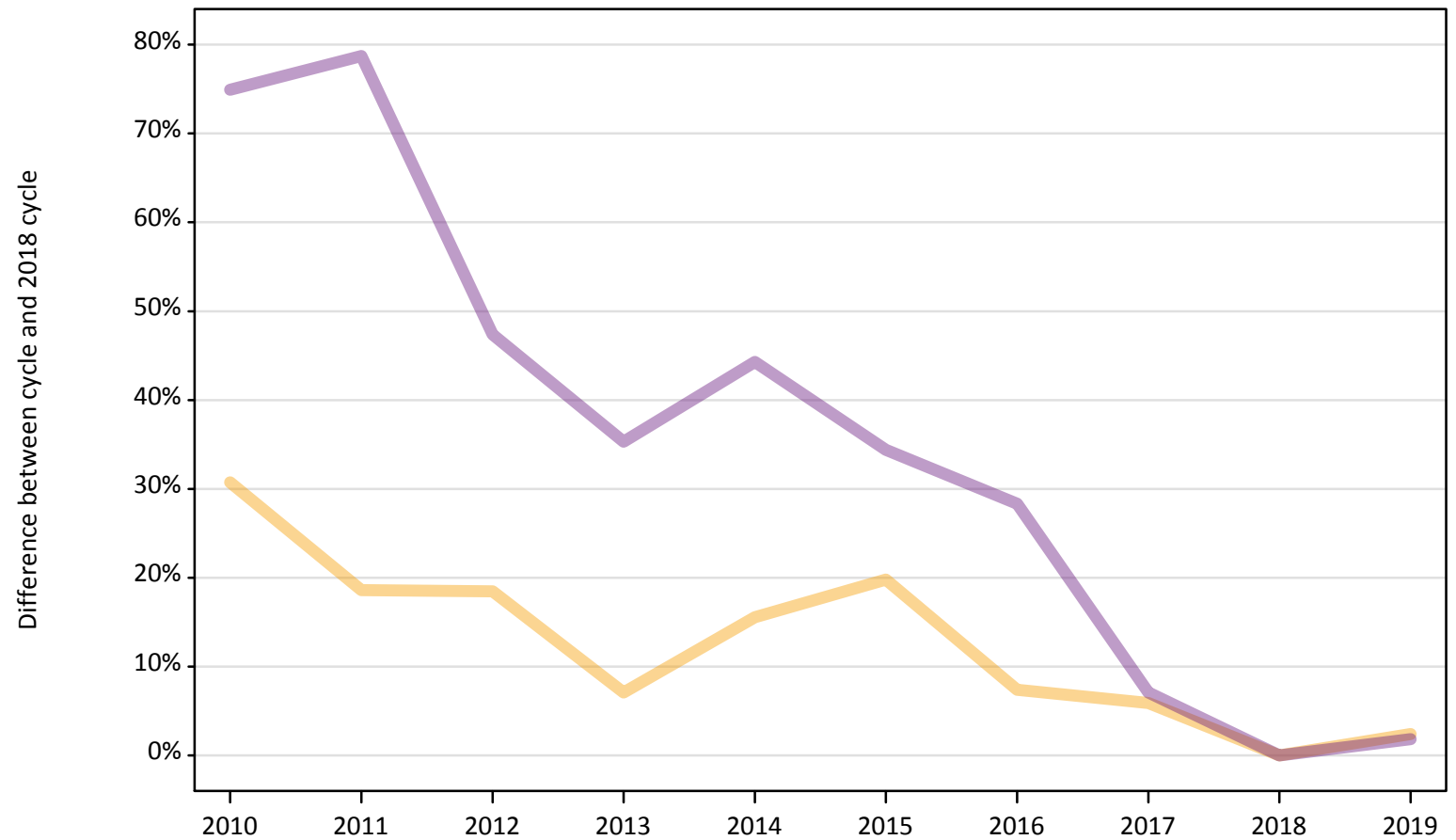
Applicant type	Status	2010	2011	2012	2013	2014	2015	2016	2017	2018	2019
Main scheme	Placed (Adjustment)	-94%	-83%	-62%	-12%	-16%	11%	-17%	10%	0%	-47%

Note: The percentage change is not recorded in the above table for groups with fewer than 10 placed applicants in that cycle or in the 2018 cycle.

A.12 Main scheme applicants not currently placed from England: 1 day after A level results day

Applicants in unplaced states: difference between cycle and 2018 cycle

— Holding offer
— Free to be placed in Clearing



Note: The percentage change is not plotted in the above chart for groups with fewer than 30 unplaced applicants in any one cycle.

A.13 Main scheme applicants not currently placed from England: 1 day after A level results day

Applicants in unplaced states: applicants at 1 day after A level results day

Applicant type	Status	2010	2011	2012	2013	2014	2015	2016	2017	2018	2019
Main scheme	Holding offer	54,790	49,690	49,640	44,880	48,410	50,200	45,000	44,370	41,900	42,920
	Free to be placed in Clearing	122,670	125,320	103,340	94,890	101,180	94,250	90,000	75,100	70,130	71,400

A.14 Main scheme applicants not currently placed from England: 1 day after A level results day

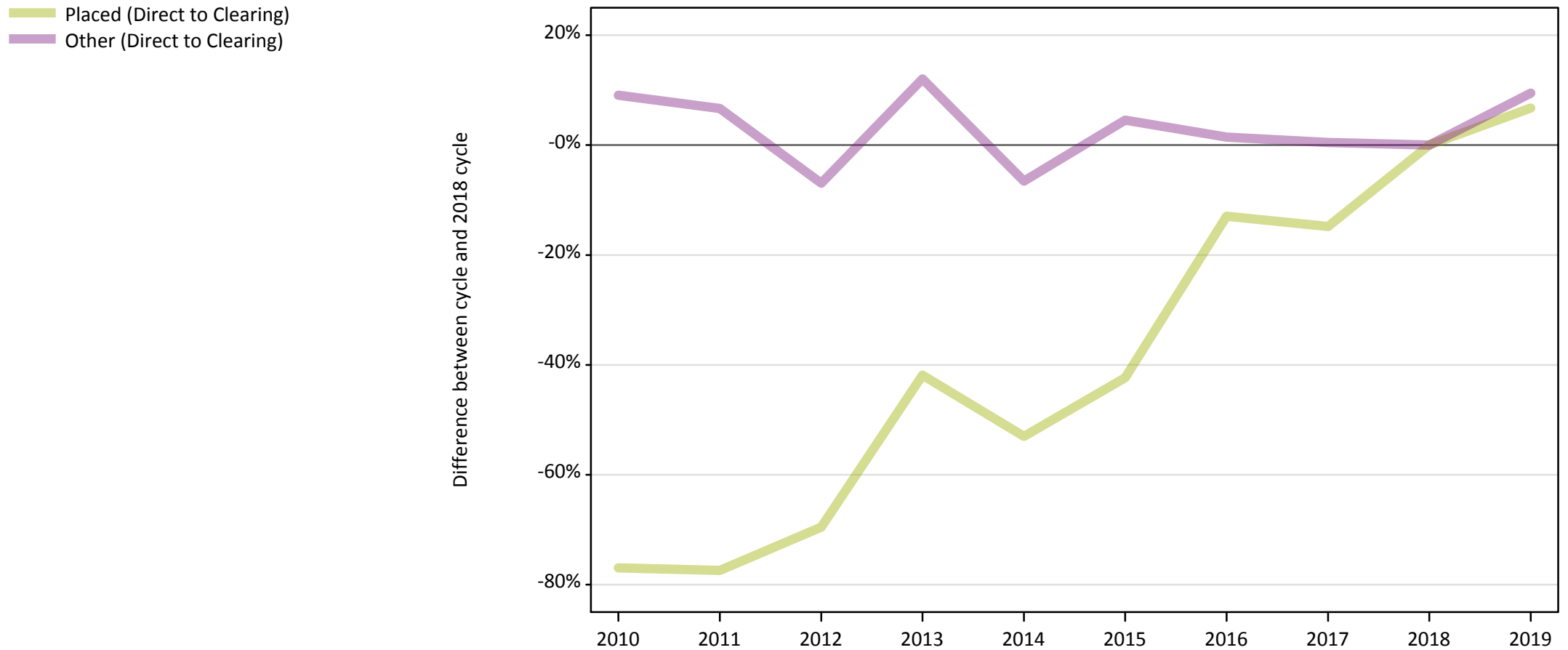
Applicants in unplaced states: difference between cycle and 2018 cycle

Applicant type	Status	2010	2011	2012	2013	2014	2015	2016	2017	2018	2019
Main scheme	Holding offer	31%	19%	18%	7%	16%	20%	7%	6%	0%	2%
	Free to be placed in Clearing	75%	79%	47%	35%	44%	34%	28%	7%	0%	2%

Note: The percentage change is not recorded in the above table for groups with fewer than 10 unplaced applicants in that cycle or in the 2018 cycle.

A.15 Direct to Clearing applicants from England: 1 day after A level results day

Direct to Clearing: difference between cycle and 2018 cycle



Note: The percentage change is not plotted in the above chart for groups with fewer than 30 placed applicants in any one cycle.

A.16 Direct to Clearing applicants from England: 1 day after A level results day

Direct to Clearing 1 day after A level results day

Applicant type	Status	2010	2011	2012	2013	2014	2015	2016	2017	2018	2019
Direct to Clearing	Placed (Direct to Clearing)	760	740	1,000	1,910	1,540	1,900	2,860	2,800	3,290	3,510
	Other (Direct to Clearing)	7,440	7,280	6,350	7,640	6,370	7,130	6,920	6,850	6,820	7,460

A.17 Direct to Clearing applicants from England: 1 day after A level results day

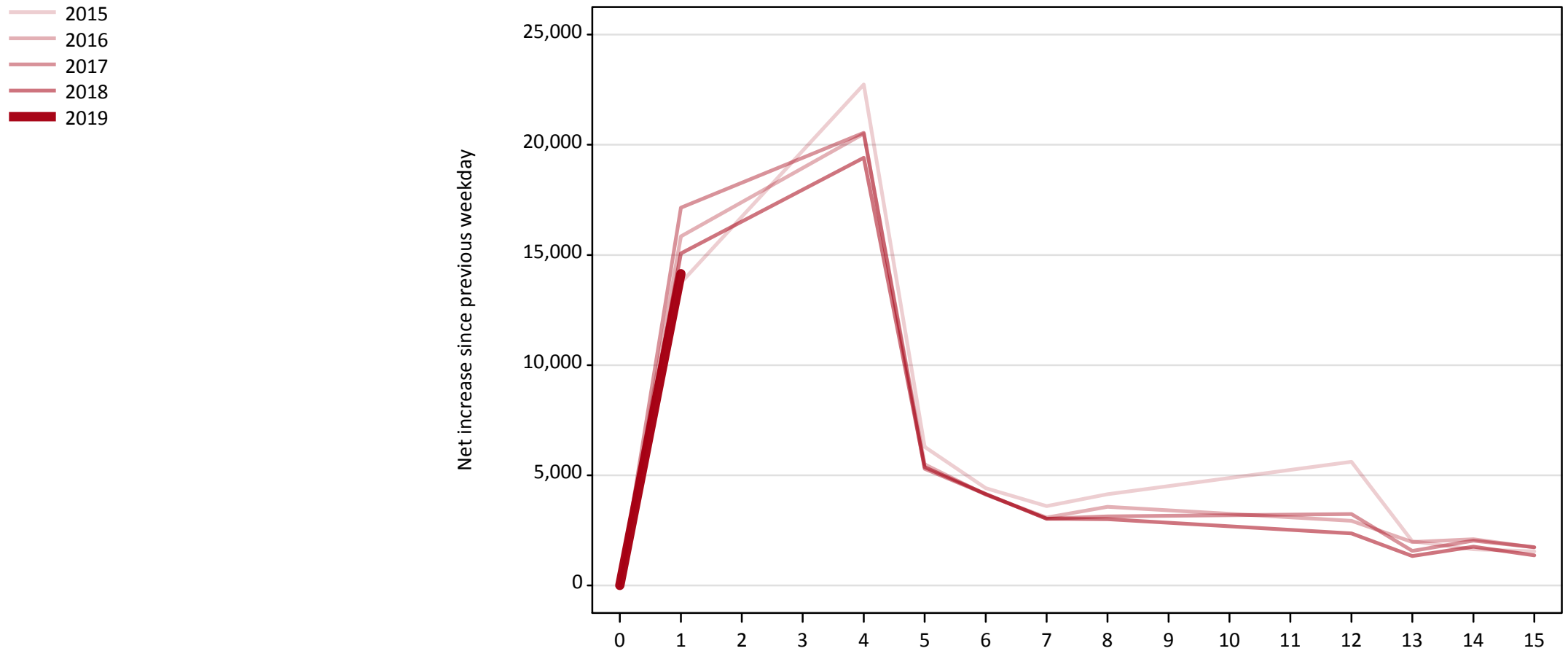
Direct to Clearing: difference between cycle and 2018 cycle

Applicant type	Status	2010	2011	2012	2013	2014	2015	2016	2017	2018	2019
Direct to Clearing	Placed (Direct to Clearing)	-77%	-77%	-70%	-42%	-53%	-42%	-13%	-15%	0%	7%
	Other (Direct to Clearing)	9%	7%	-7%	12%	-7%	5%	1%	0%	0%	9%

Note: The percentage change is not recorded in the above table for groups with fewer than 10 placed applicants in that cycle or in the 2018 cycle.

A.18 All Placed: Daily net change (from England)

Net increase since previous weekday (2019 cycle up to 1 day after A level results day)

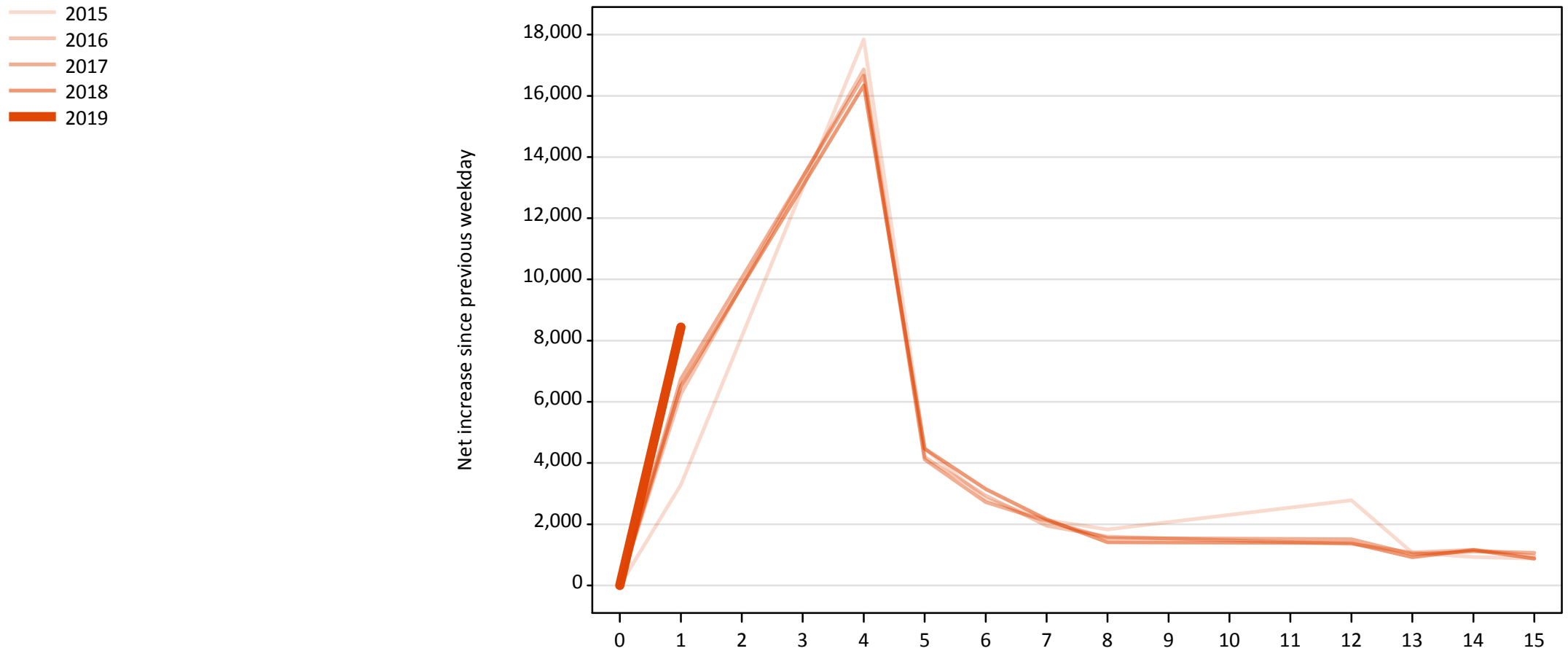


A.19 All Placed: Daily net change (from England)

Net increase since previous weekday (2019 cycle up to 1 day after A level results day)

Applicant status, days since A level results day		2015	2016	2017	2018	2019
All Placed	0	0	0	0	0	0
	1	13,730	15,840	17,150	15,070	14,150
	4	22,730	20,500	20,540	19,410	
	5	6,300	5,500	5,300	5,370	
	6	4,410	4,120	4,140	4,150	
	7	3,600	3,080	3,030	3,030	
	8	4,140	3,570	3,130	3,010	
	12	5,610	2,940	3,240	2,360	
	13	2,000	1,970	1,560	1,340	
	14	1,640	2,100	2,030	1,760	
	15	1,540	1,730	1,740	1,360	

A.20 Placed through Clearing only: Daily net change (from England)
Net increase since previous weekday (2019 cycle up to 1 day after A level results day)



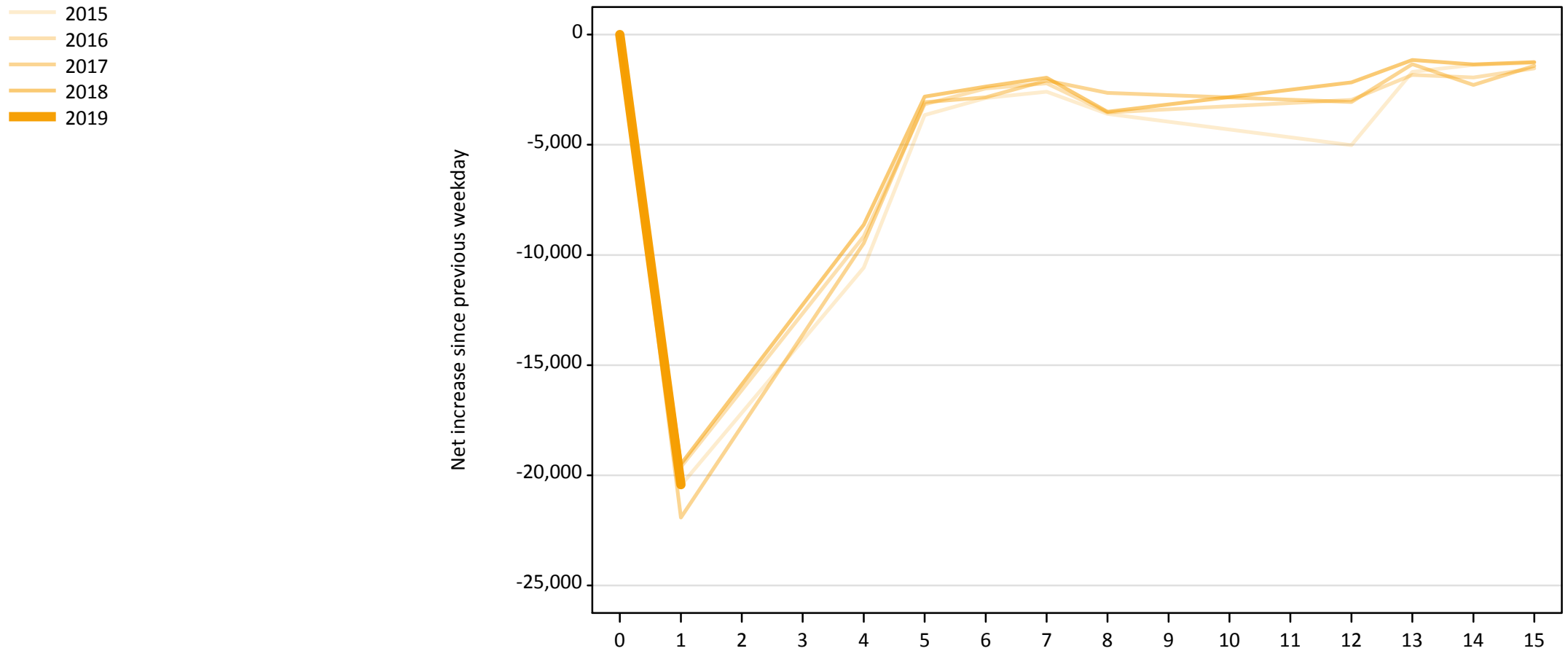
A.21 Placed through Clearing only: Daily net change (from England)

Net increase since previous weekday (2019 cycle up to 1 day after A level results day)

Applicant status, days since A level results day		2015	2016	2017	2018	2019
Placed through Clearing only	0	0	0	0	0	0
	1	3,300	6,260	6,740	6,510	8,440
	4	17,850	16,870	16,660	16,340	
	5	4,470	4,190	4,120	4,470	
	6	2,830	2,940	2,720	3,150	
	7	2,140	1,950	2,100	2,160	
	8	1,830	1,590	1,540	1,410	
	12	2,790	1,360	1,510	1,390	
	13	1,060	1,080	1,020	920	
	14	930	1,160	1,120	1,160	
	15	880	970	1,060	880	

A.22 Holding Offer: Daily net change (from England)

Net increase since previous weekday (2019 cycle up to 1 day after A level results day)



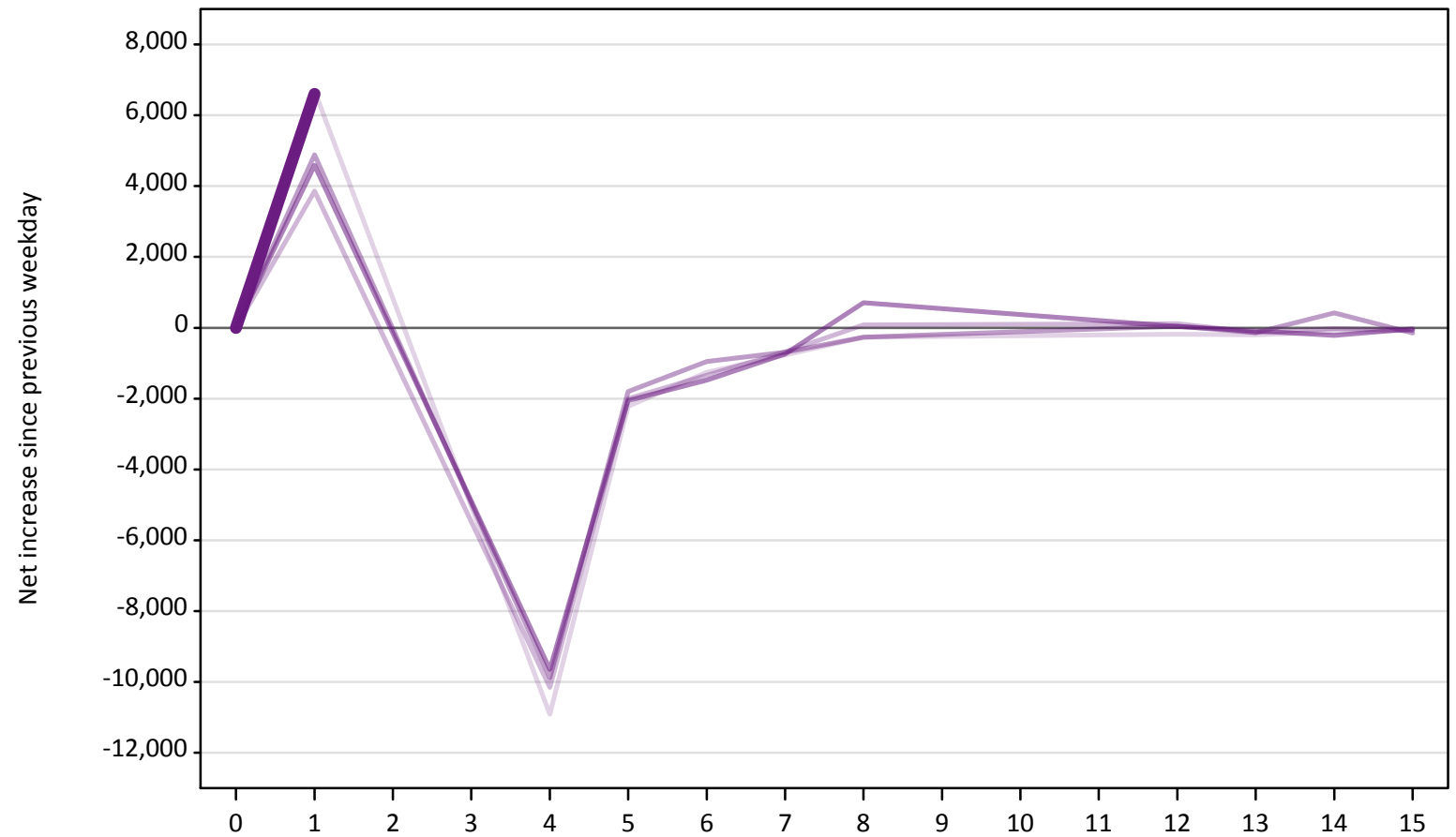
A.23 Holding Offer: Daily net change (from England)

Net increase since previous weekday (2019 cycle up to 1 day after A level results day)

Applicant status, days since A level results day		2015	2016	2017	2018	2019
Holding Offer	0	0	0	0	0	0
	1	-20,460	-19,620	-21,920	-19,500	-20,430
	4	-10,580	-9,160	-9,470	-8,630	
	5	-3,660	-3,160	-3,060	-2,820	
	6	-2,870	-2,450	-2,840	-2,360	
	7	-2,590	-2,210	-2,080	-1,960	
	8	-3,590	-3,540	-2,650	-3,510	
	12	-5,010	-2,970	-3,060	-2,170	
	13	-1,690	-1,830	-1,340	-1,160	
	14	-1,370	-1,950	-2,290	-1,360	
	15	-1,280	-1,530	-1,420	-1,240	

A.24 Free to be placed in Clearing: Daily net change (from England)
Net increase since previous weekday (2019 cycle up to 1 day after A level results day)

- 2015
- 2016
- 2017
- 2018
- 2019



A.25 Free to be placed in Clearing: Daily net change (from England)

Net increase since previous weekday (2019 cycle up to 1 day after A level results day)

Applicant status, days since A level results day		2015	2016	2017	2018	2019
Free to be placed in Clearing	0	0	0	0	0	0
	1	6,690	3,860	4,890	4,590	6,600
	4	-10,920	-10,160	-9,880	-9,640	
	5	-2,220	-2,000	-1,800	-2,050	
	6	-1,260	-1,340	-950	-1,480	
	7	-770	-680	-690	-740	
	8	-270	80	-270	710	
	12	-190	110	50	40	
	13	-200	-130	-140	-90	
	14	-120	-20	420	-220	
	15	-70	-70	-150	-30	