

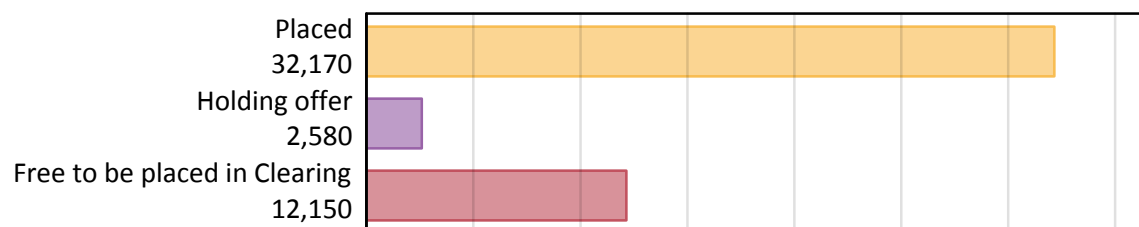
# Daily Clearing Analysis: Overview

Analysis at 00:05 on Friday 16 August 2019 (1 day after A level results day)

## A.1 Applicants by type and status from Scotland, 2019 cycle

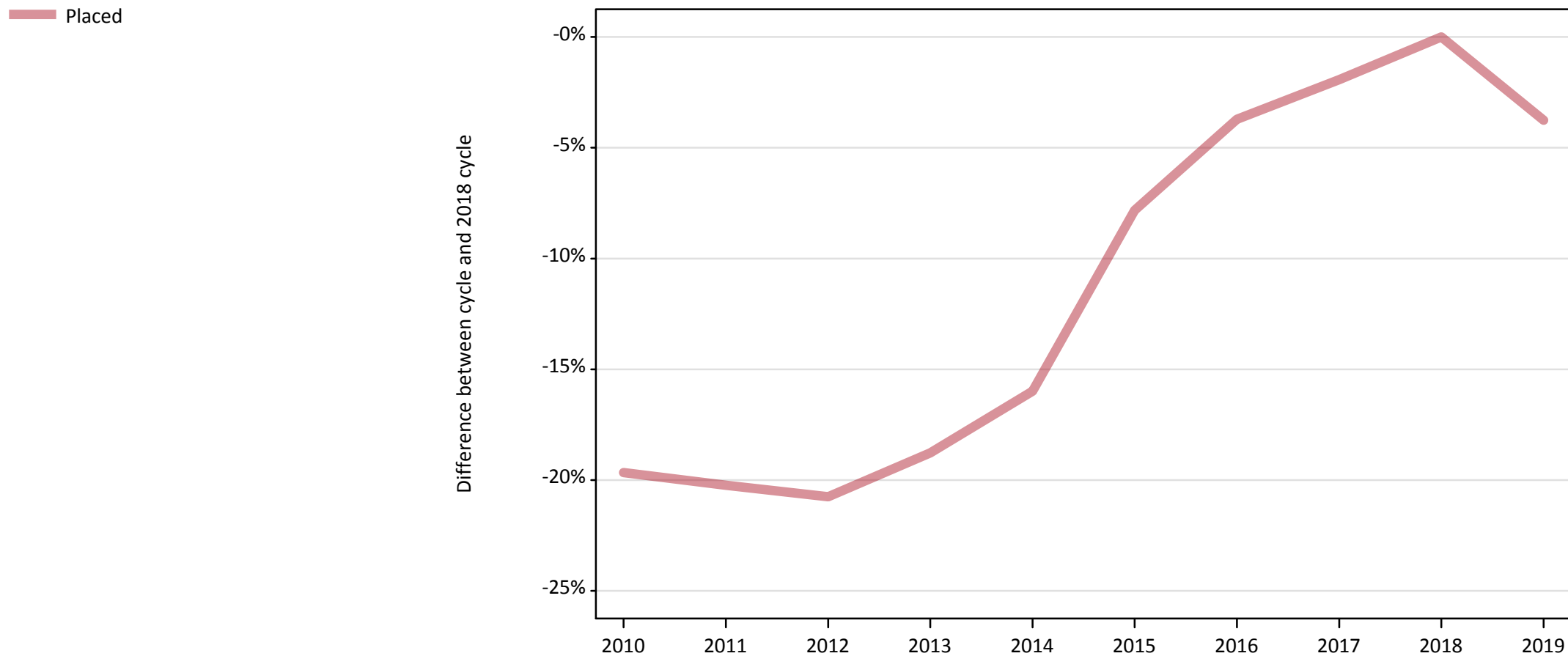
Applicant type	Status	2019
Main scheme	Placed (Clearing)	730
	Placed (Adjustment)	0
	Placed (Firm)	29,460
	Placed (Insurance)	1,230
	Placed (Other)	560
	Holding offer	2,580
	Free to be placed in Clearing	12,150
Direct to Clearing	Placed (Direct to Clearing)	200
	Other (Direct to Clearing)	470
All applicants	Placed	32,170

## A.2 Summary of applicants who are placed, holding offers or free to be placed in Clearing ( Scotland )



### A.3 All placed applicants from Scotland: 1 day after A level results day

All placed applicants: difference between cycle and 2018 cycle



Note: The percentage change is not plotted in the above chart for groups with fewer than 30 placed applicants in any one cycle.

#### A.4 All placed applicants from Scotland: 1 day after A level results day

All placed applicants: applicants at 1 day after A level results day

Applicant type	Status	2010	2011	2012	2013	2014	2015	2016	2017	2018	2019
All applicants	Placed	26,850	26,660	26,490	27,150	28,080	30,810	32,180	32,780	33,420	32,170

#### A.5 All placed applicants from Scotland: 1 day after A level results day

All placed applicants: difference between cycle and 2018 cycle

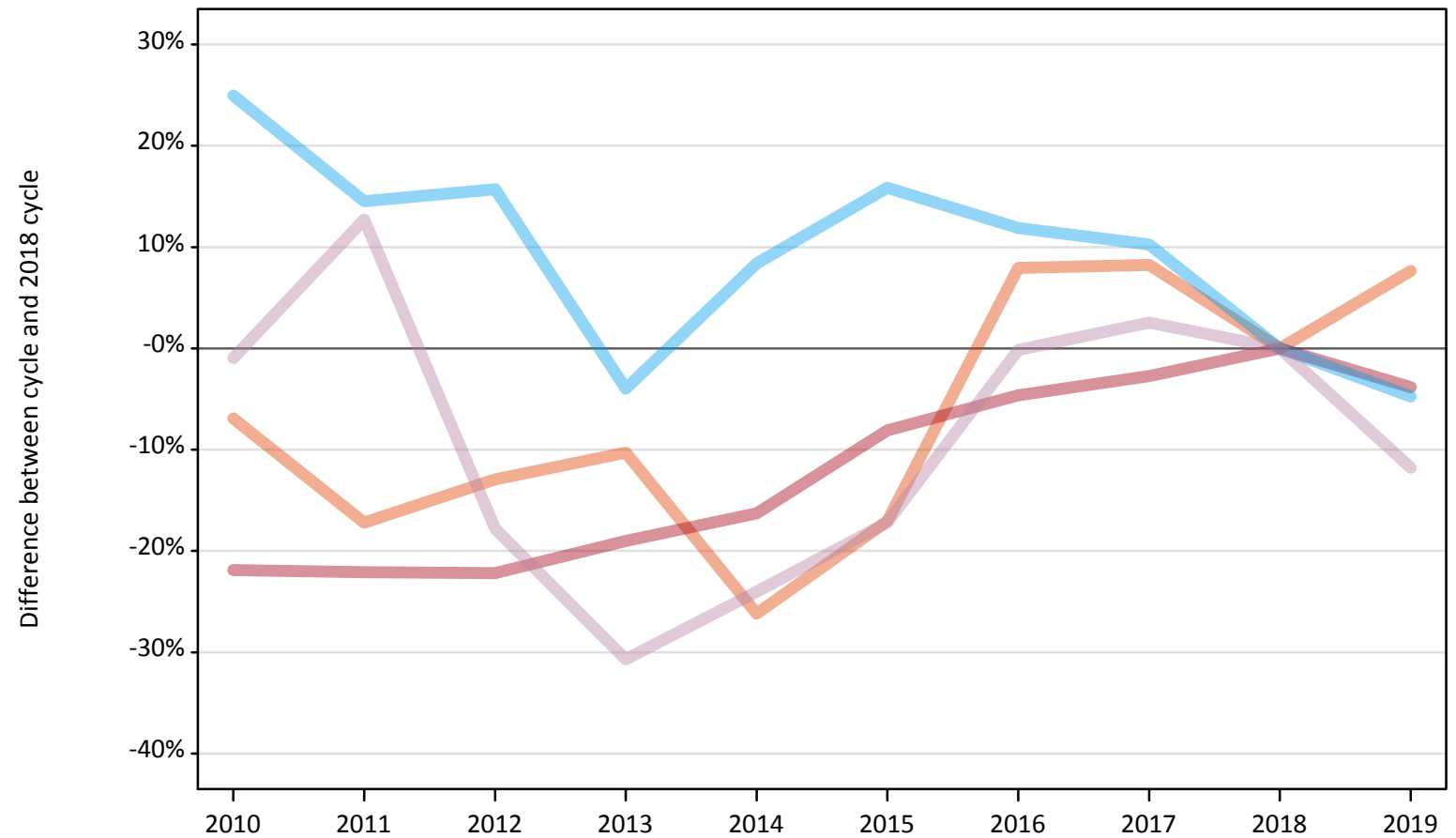
Applicant type	Status	2010	2011	2012	2013	2014	2015	2016	2017	2018	2019
All applicants	Placed	-20%	-20%	-21%	-19%	-16%	-8%	-4%	-2%	0%	-4%

Note: The percentage change is not recorded in the above table for groups with fewer than 10 placed applicants in that cycle or in the 2018 cycle.

## A.6 Placed main scheme applicants from Scotland: 1 day after A level results day

All Main scheme placed routes (excluding Adjustment): difference between cycle and 2018 cycle

- Placed (Clearing)
- Placed (Firm)
- Placed (Insurance)
- Placed (Other)



Note: The percentage change is not plotted in the above chart for groups with fewer than 30 placed applicants in any one cycle.

### A.7 Placed main scheme applicants from Scotland: 1 day after A level results day

All Main scheme placed routes (excluding Adjustment): applicants at 1 day after A level results day

Applicant type	Status	2010	2011	2012	2013	2014	2015	2016	2017	2018	2019
Main scheme	Placed (Clearing)	630	560	590	610	500	560	730	740	680	730
	Placed (Firm)	23,920	23,860	23,830	24,800	25,640	28,150	29,210	29,790	30,630	29,460
	Placed (Insurance)	1,610	1,470	1,490	1,240	1,390	1,490	1,440	1,420	1,290	1,230
	Placed (Other)	620	710	520	440	480	520	630	650	630	560

### A.8 Placed main scheme applicants from Scotland: 1 day after A level results day

All Main scheme placed routes (excluding Adjustment): difference between cycle and 2018 cycle

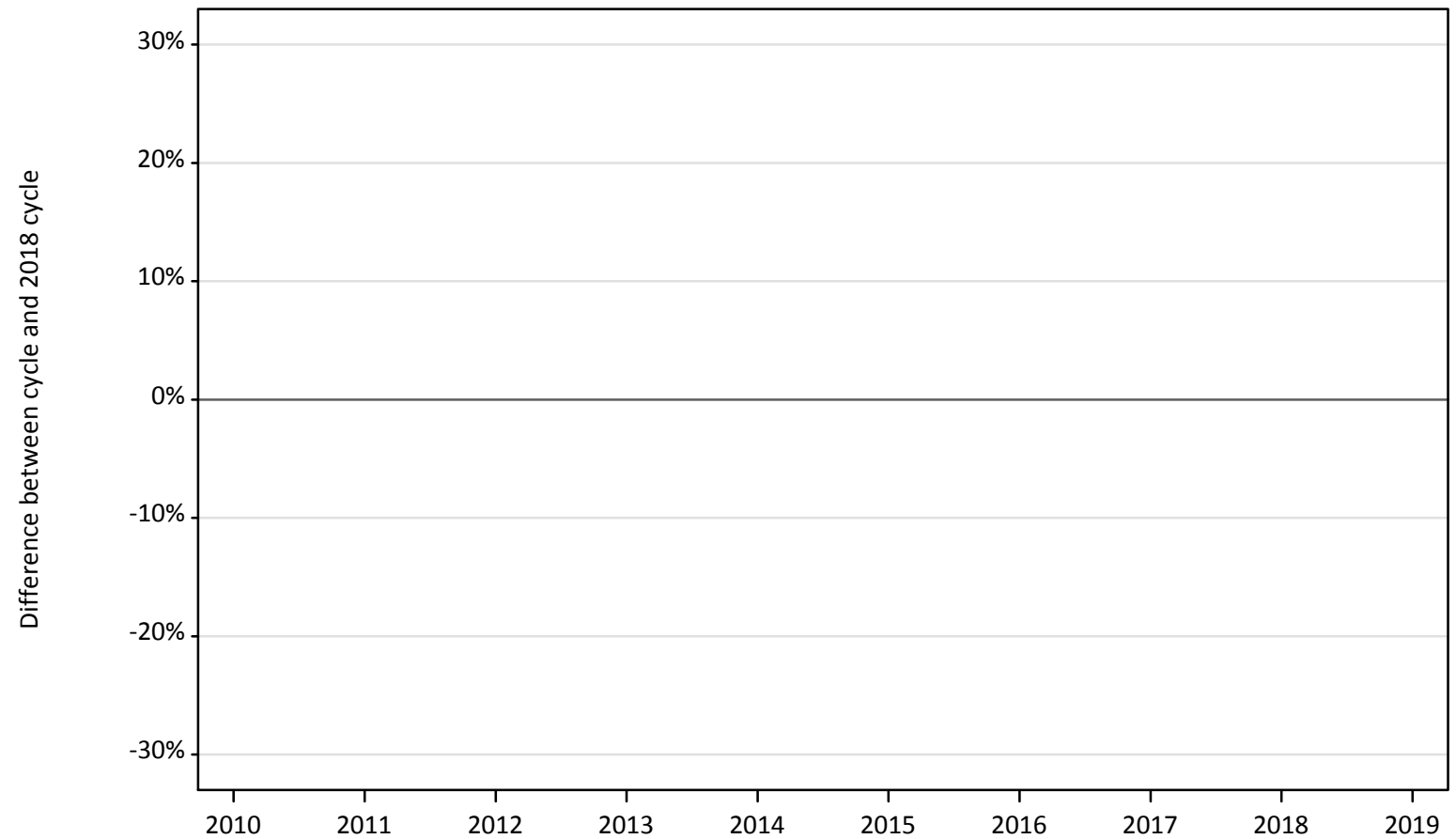
Applicant type	Status	2010	2011	2012	2013	2014	2015	2016	2017	2018	2019
Main scheme	Placed (Clearing)	-7%	-17%	-13%	-10%	-26%	-17%	8%	8%	0%	8%
	Placed (Firm)	-22%	-22%	-22%	-19%	-16%	-8%	-5%	-3%	0%	-4%
	Placed (Insurance)	25%	15%	16%	-4%	8%	16%	12%	10%	0%	-5%
	Placed (Other)	-1%	13%	-18%	-31%	-24%	-17%	-0%	3%	0%	-12%

Note: The percentage change is not recorded in the above table for groups with fewer than 10 placed applicants in that cycle or in the 2018 cycle.

## A.9 Main scheme applicants placed through adjustment: 1 day after A level results day

Placed through adjustment: difference between cycle and 2018 cycle

Placed (Adjustment)



Note: The percentage change is not plotted in the above chart for groups with fewer than 30 placed applicants in any one cycle.

### A.10 Main scheme applicants placed through adjustment: 1 day after A level results day

Placed through adjustment: applicants at 1 day after A level results day

Applicant type	Status	2010	2011	2012	2013	2014	2015	2016	2017	2018	2019
Main scheme	Placed (Adjustment)	0	0	10	0	10	0	0	0	0	0

### A.11 Main scheme applicants placed through adjustment: 1 day after A level results day

Placed through adjustment: difference between cycle and 2018 cycle

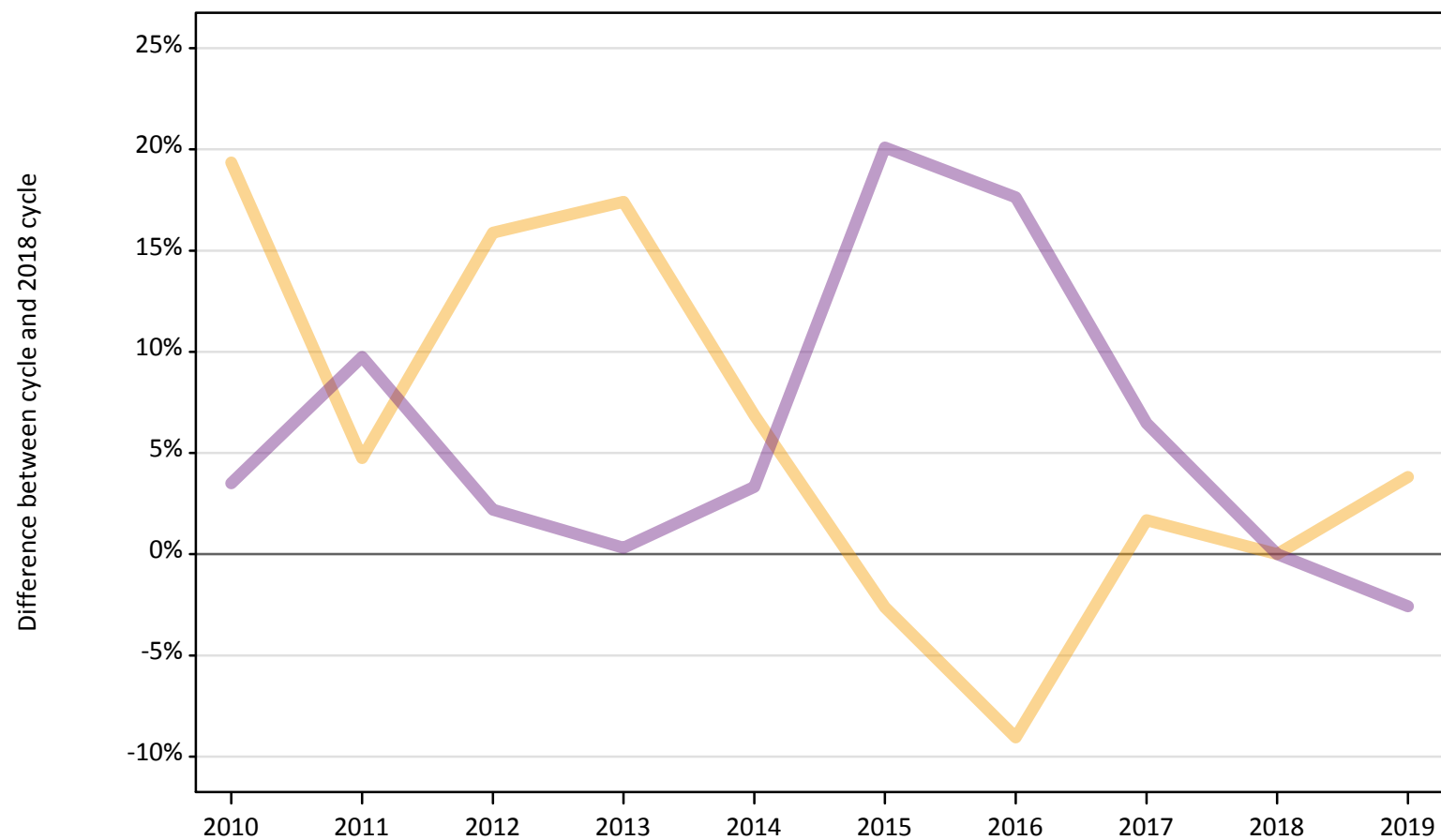
Applicant type	Status	2010	2011	2012	2013	2014	2015	2016	2017	2018	2019
Main scheme	Placed (Adjustment)										

Note: The percentage change is not recorded in the above table for groups with fewer than 10 placed applicants in that cycle or in the 2018 cycle.

## A.12 Main scheme applicants not currently placed from Scotland: 1 day after A level results day

Applicants in unplaced states: difference between cycle and 2018 cycle

— Holding offer  
— Free to be placed in Clearing



Note: The percentage change is not plotted in the above chart for groups with fewer than 30 unplaced applicants in any one cycle.



**A.13 Main scheme applicants not currently placed from Scotland: 1 day after A level results day**

Applicants in unplaced states: applicants at 1 day after A level results day

Applicant type	Status	2010	2011	2012	2013	2014	2015	2016	2017	2018	2019
Main scheme	Holding offer	2,970	2,600	2,880	2,920	2,660	2,420	2,260	2,530	2,490	2,580
	Free to be placed in Clearing	12,910	13,690	12,750	12,510	12,890	14,980	14,670	13,280	12,470	12,150

**A.14 Main scheme applicants not currently placed from Scotland: 1 day after A level results day**

Applicants in unplaced states: difference between cycle and 2018 cycle

Applicant type	Status	2010	2011	2012	2013	2014	2015	2016	2017	2018	2019
Main scheme	Holding offer	19%	5%	16%	17%	7%	-3%	-9%	2%	0%	4%
	Free to be placed in Clearing	4%	10%	2%	0%	3%	20%	18%	6%	0%	-3%

Note: The percentage change is not recorded in the above table for groups with fewer than 10 unplaced applicants in that cycle or in the 2018 cycle.

### A.15 Direct to Clearing applicants from Scotland: 1 day after A level results day

Direct to Clearing: difference between cycle and 2018 cycle



Note: The percentage change is not plotted in the above chart for groups with fewer than 30 placed applicants in any one cycle.

### A.16 Direct to Clearing applicants from Scotland: 1 day after A level results day

Direct to Clearing 1 day after A level results day

Applicant type	Status	2010	2011	2012	2013	2014	2015	2016	2017	2018	2019
Direct to Clearing	Placed (Direct to Clearing)	70	50	50	60	60	90	170	190	200	200
	Other (Direct to Clearing)	350	270	300	280	240	350	380	360	360	470

### A.17 Direct to Clearing applicants from Scotland: 1 day after A level results day

Direct to Clearing: difference between cycle and 2018 cycle

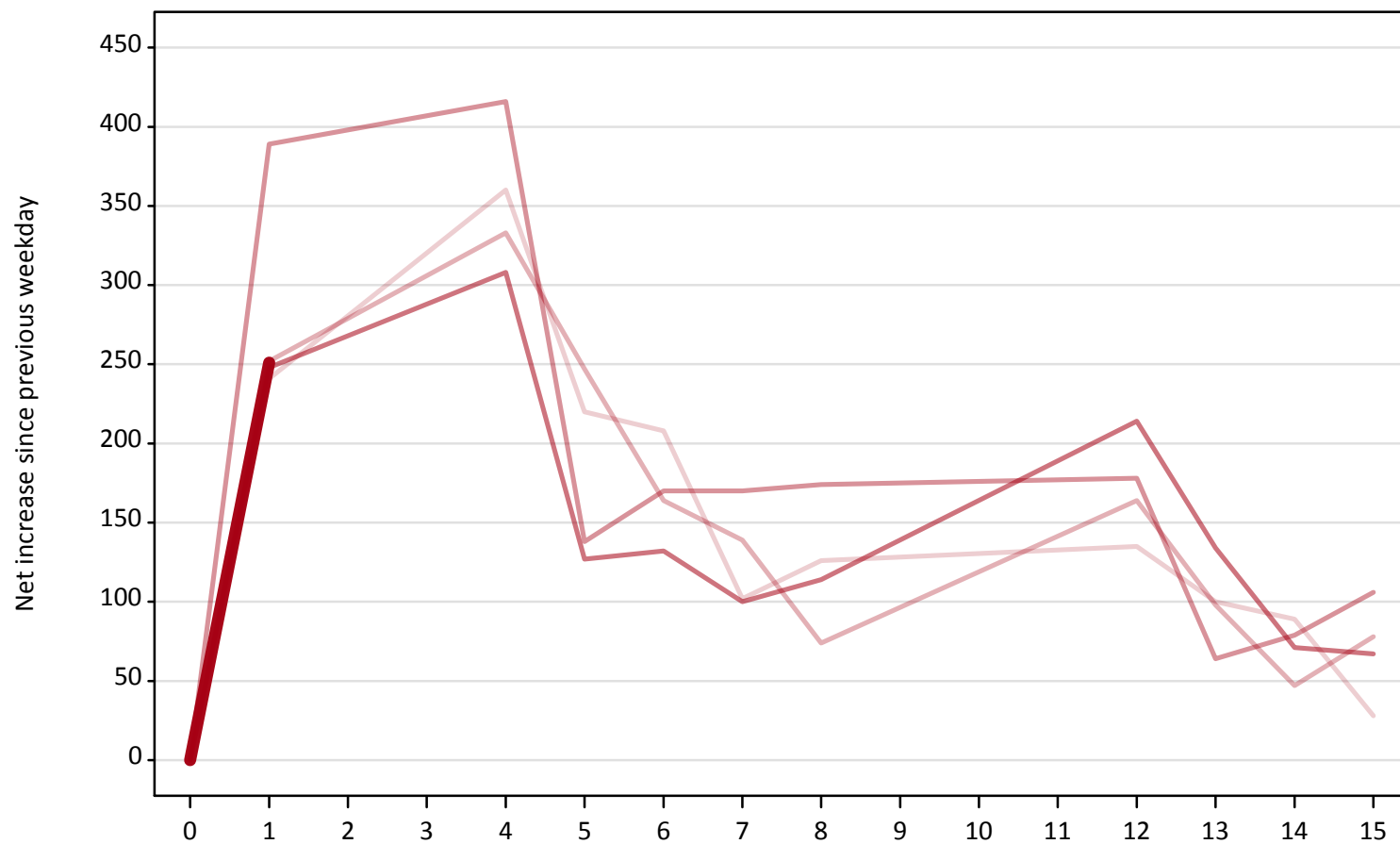
Applicant type	Status	2010	2011	2012	2013	2014	2015	2016	2017	2018	2019
Direct to Clearing	Placed (Direct to Clearing)	-67%	-74%	-74%	-69%	-70%	-57%	-17%	-7%	0%	0%
	Other (Direct to Clearing)	-3%	-25%	-16%	-22%	-33%	-3%	6%	1%	0%	30%

Note: The percentage change is not recorded in the above table for groups with fewer than 10 placed applicants in that cycle or in the 2018 cycle.

### A.18 All Placed: Daily net change (from Scotland)

Net increase since previous weekday (2019 cycle up to 1 day after A level results day)

- 2015
- 2016
- 2017
- 2018
- 2019**



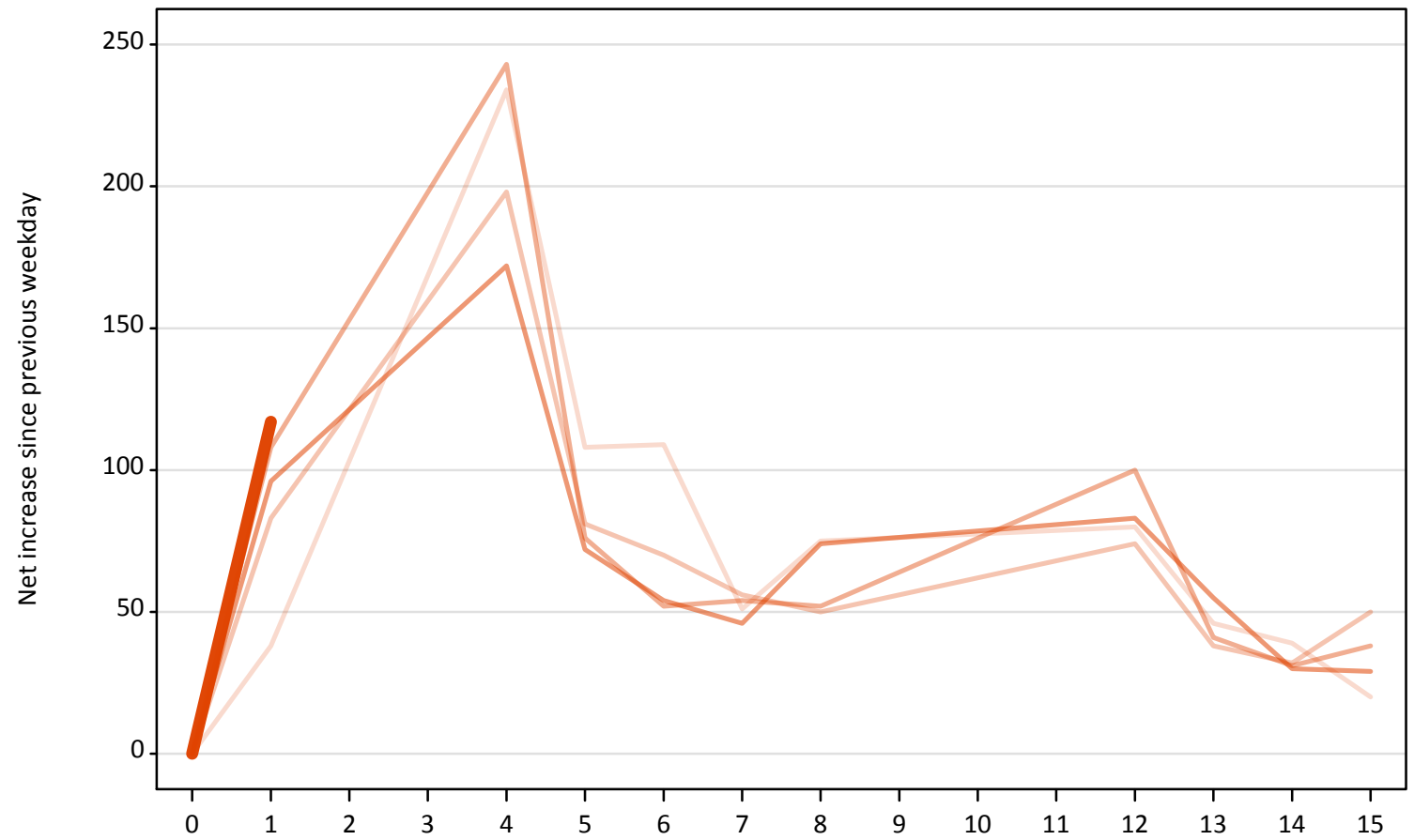
**A.19 All Placed: Daily net change (from Scotland)**

Net increase since previous weekday (2019 cycle up to 1 day after A level results day)

Applicant status, days since A level results day	2015	2016	2017	2018	2019	
All Placed	0	0	0	0	0	
	1	240	250	390	250	250
	4	360	330	420	310	
	5	220	250	140	130	
	6	210	160	170	130	
	7	100	140	170	100	
	8	130	70	170	110	
	12	140	160	180	210	
	13	100	100	60	130	
	14	90	50	80	70	
	15	30	80	110	70	

**A.20 Placed through Clearing only: Daily net change (from Scotland)**  
Net increase since previous weekday (2019 cycle up to 1 day after A level results day)

- 2015
- 2016
- 2017
- 2018
- 2019**



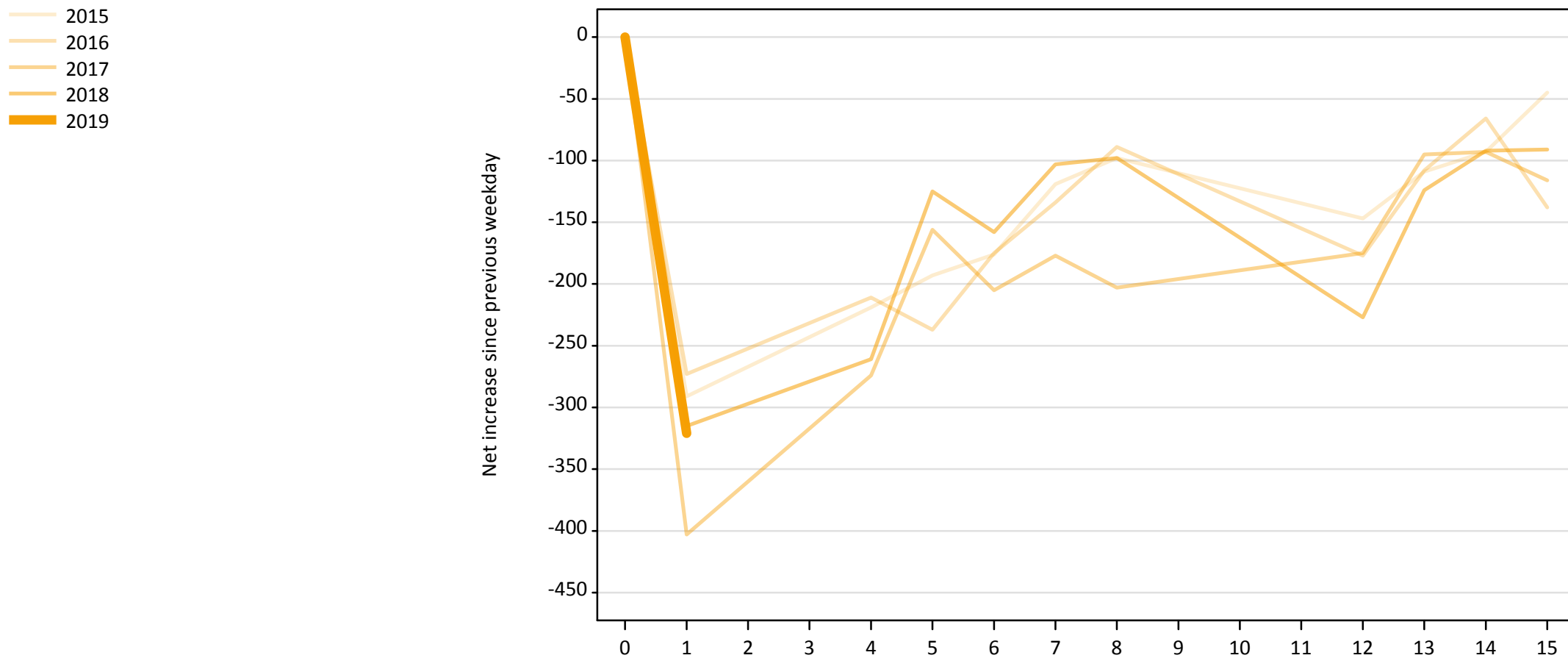
### A.21 Placed through Clearing only: Daily net change (from Scotland)

Net increase since previous weekday (2019 cycle up to 1 day after A level results day)

Applicant status, days since A level results day		2015	2016	2017	2018	2019
Placed through Clearing only	0	0	0	0	0	0
	1	40	80	110	100	120
	4	230	200	240	170	
	5	110	80	80	70	
	6	110	70	50	50	
	7	50	60	50	50	
	8	80	50	50	70	
	12	80	70	100	80	
	13	50	40	40	60	
	14	40	30	30	30	
	15	20	50	40	30	

### A.22 Holding Offer: Daily net change (from Scotland)

Net increase since previous weekday (2019 cycle up to 1 day after A level results day)





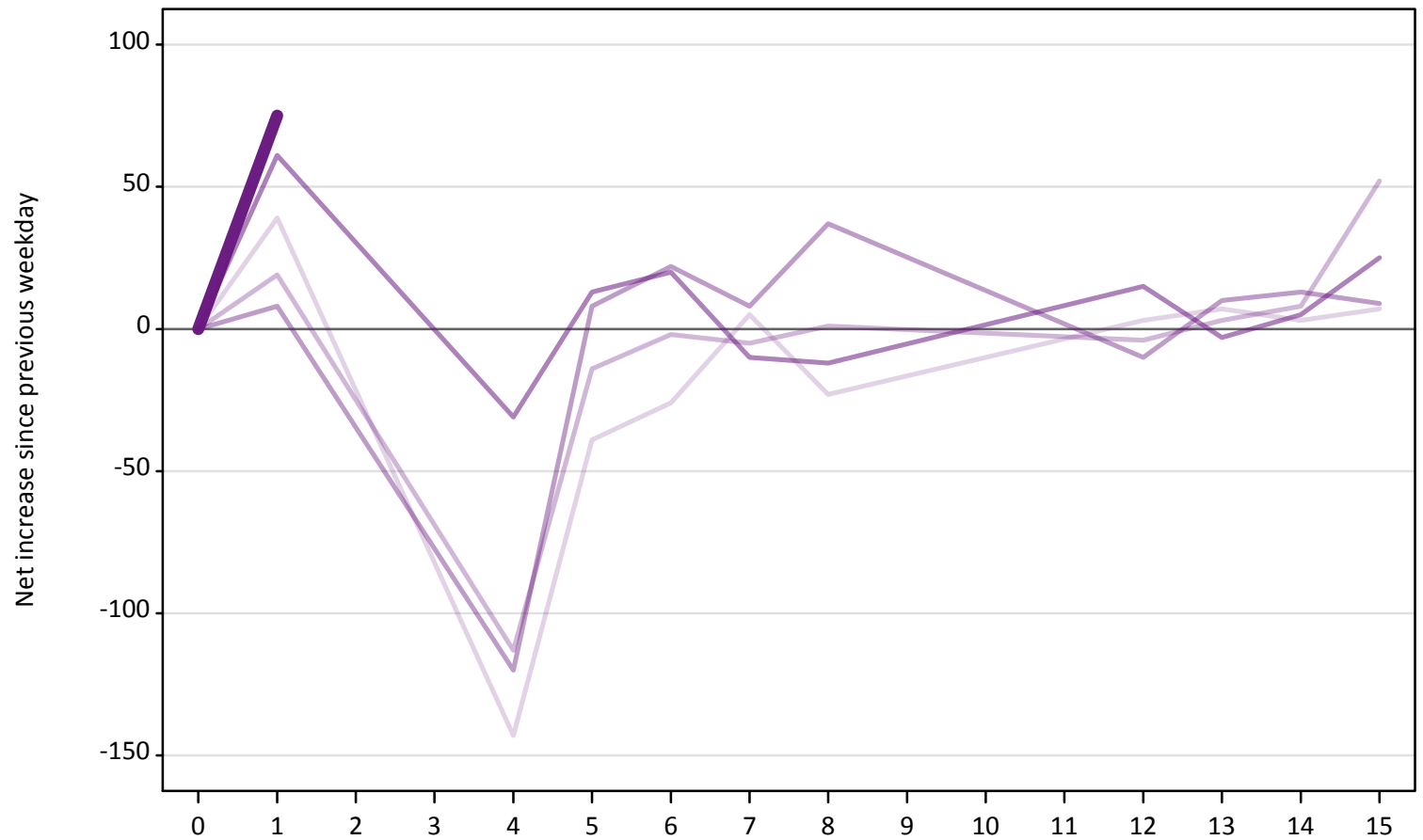
### A.23 Holding Offer: Daily net change (from Scotland)

Net increase since previous weekday (2019 cycle up to 1 day after A level results day)

Applicant status, days since A level results day		2015	2016	2017	2018	2019
Holding Offer	0	0	0	0	0	0
	1	-290	-270	-400	-320	-320
	4	-220	-210	-270	-260	
	5	-190	-240	-160	-130	
	6	-180	-180	-210	-160	
	7	-120	-130	-180	-100	
	8	-100	-90	-200	-100	
	12	-150	-180	-180	-230	
	13	-110	-110	-100	-120	
	14	-90	-70	-90	-90	
	15	-50	-140	-120	-90	

**A.24 Free to be placed in Clearing: Daily net change (from Scotland)**  
Net increase since previous weekday (2019 cycle up to 1 day after A level results day)

- 2015
- 2016
- 2017
- 2018
- 2019



**A.25 Free to be placed in Clearing: Daily net change (from Scotland)**

Net increase since previous weekday (2019 cycle up to 1 day after A level results day)

Applicant status, days since A level results day		2015	2016	2017	2018	2019
Free to be placed in Clearing	0	0	0	0	0	0
	1	40	20	10	60	80
	4	-140	-110	-120	-30	
	5	-40	-10	10	10	
	6	-30	0	20	20	
	7	10	-10	10	-10	
	8	-20	0	40	-10	
	12	0	0	-10	20	
	13	10	0	10	0	
	14	0	10	10	10	
	15	10	50	10	30	