

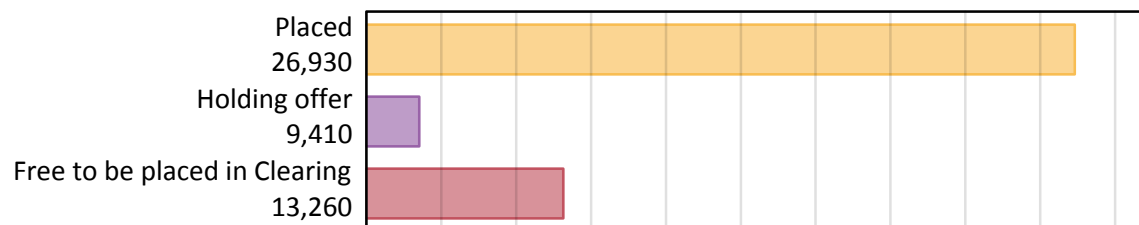
Daily Clearing Analysis: Overview

Analysis at 00:05 on Friday 16 August 2019 (1 day after A level results day)

A.1 Applicants by type and status from the EU - excluding UK, 2019 cycle

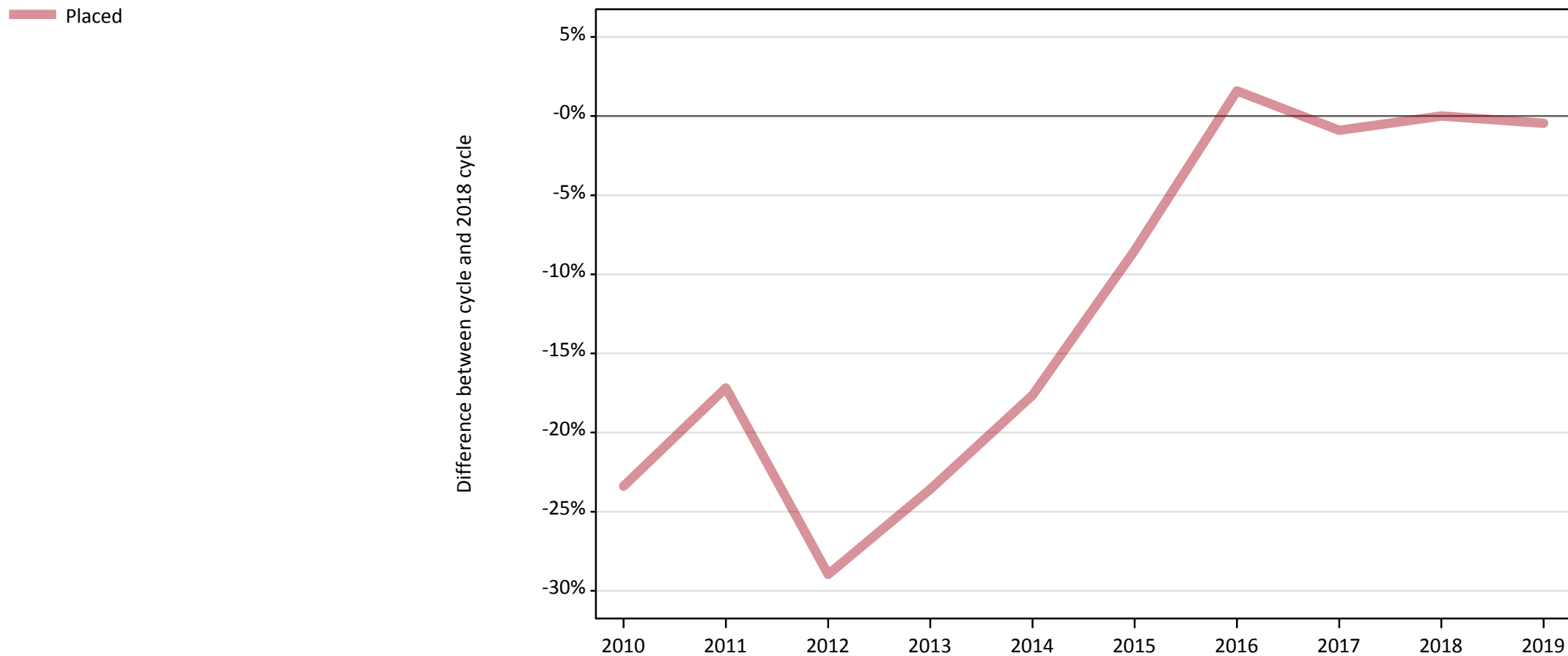
Applicant type	Status	2019
Main scheme	Placed (Clearing)	650
	Placed (Adjustment)	10
	Placed (Firm)	23,030
	Placed (Insurance)	1,870
	Placed (Other)	1,150
	Holding offer	9,410
	Free to be placed in Clearing	13,260
Direct to Clearing	Placed (Direct to Clearing)	230
	Other (Direct to Clearing)	400
All applicants	Placed	26,930

A.2 Summary of applicants who are placed, holding offers or free to be placed in Clearing (the EU - excluding UK)



A.3 All placed applicants from the EU - excluding UK: 1 day after A level results day

All placed applicants: difference between cycle and 2018 cycle



Note: The percentage change is not plotted in the above chart for groups with fewer than 30 placed applicants in any one cycle.

A.4 All placed applicants from the EU - excluding UK: 1 day after A level results day

All placed applicants: applicants at 1 day after A level results day

Applicant type	Status	2010	2011	2012	2013	2014	2015	2016	2017	2018	2019
All applicants	Placed	20,720	22,400	19,210	20,670	22,280	24,750	27,480	26,810	27,050	26,930

A.5 All placed applicants from the EU - excluding UK: 1 day after A level results day

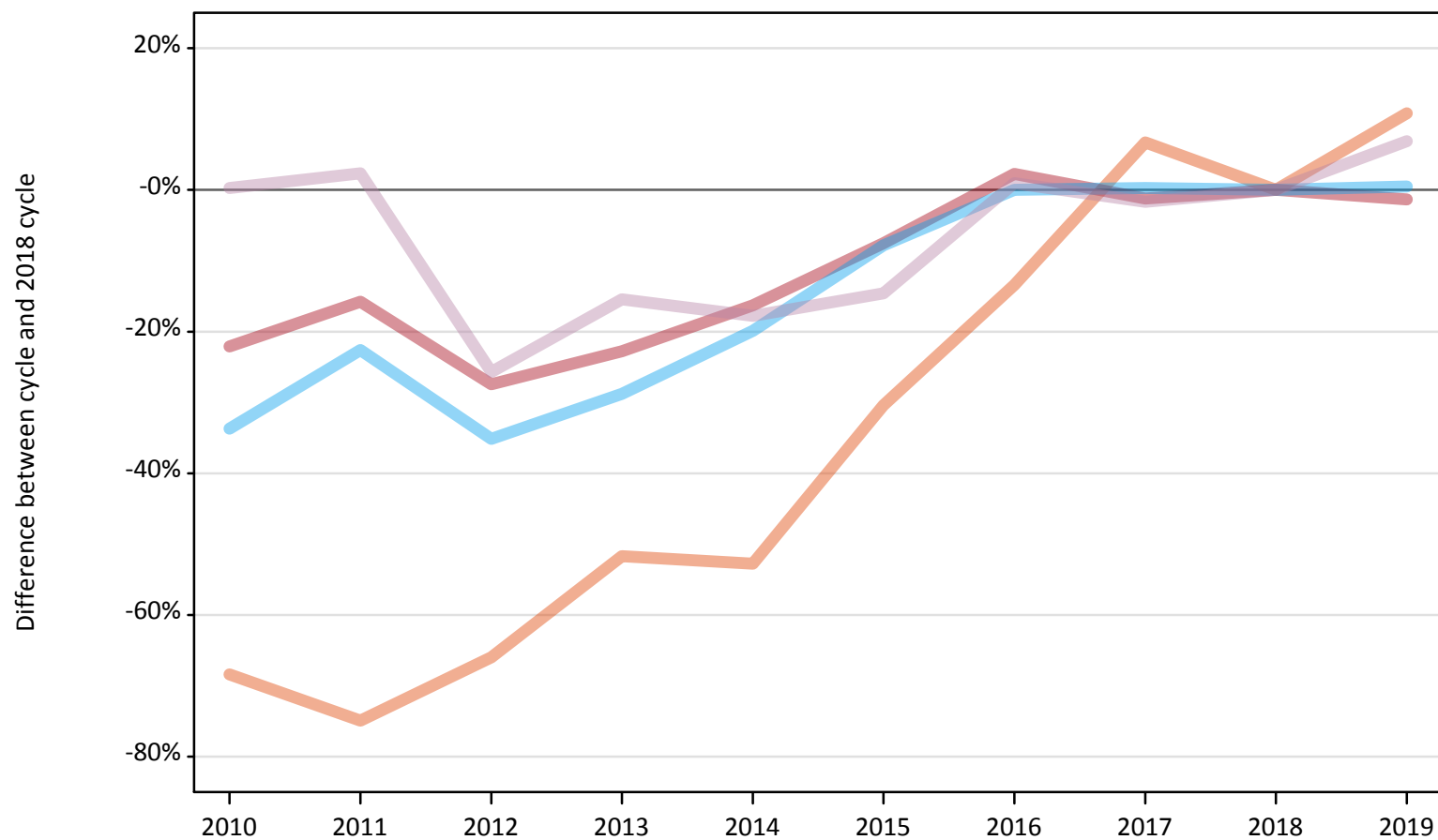
All placed applicants: difference between cycle and 2018 cycle

Applicant type	Status	2010	2011	2012	2013	2014	2015	2016	2017	2018	2019
All applicants	Placed	-23%	-17%	-29%	-24%	-18%	-8%	2%	-1%	0%	-0%

Note: The percentage change is not recorded in the above table for groups with fewer than 10 placed applicants in that cycle or in the 2018 cycle.

A.6 Placed main scheme applicants from the EU - excluding UK: 1 day after A level results day
All Main scheme placed routes (excluding Adjustment): difference between cycle and 2018 cycle

- Placed (Clearing)
- Placed (Firm)
- Placed (Insurance)
- Placed (Other)



Note: The percentage change is not plotted in the above chart for groups with fewer than 30 placed applicants in any one cycle.

A.7 Placed main scheme applicants from the EU - excluding UK: 1 day after A level results day

All Main scheme placed routes (excluding Adjustment): applicants at 1 day after A level results day

Applicant type	Status	2010	2011	2012	2013	2014	2015	2016	2017	2018	2019
Main scheme	Placed (Clearing)	180	150	200	280	280	410	500	620	580	650
	Placed (Firm)	18,180	19,660	16,940	18,030	19,540	21,580	23,870	23,050	23,340	23,030
	Placed (Insurance)	1,240	1,440	1,210	1,330	1,490	1,720	1,860	1,870	1,860	1,870
	Placed (Other)	1,080	1,100	800	910	880	920	1,080	1,060	1,070	1,150

A.8 Placed main scheme applicants from the EU - excluding UK: 1 day after A level results day

All Main scheme placed routes (excluding Adjustment): difference between cycle and 2018 cycle

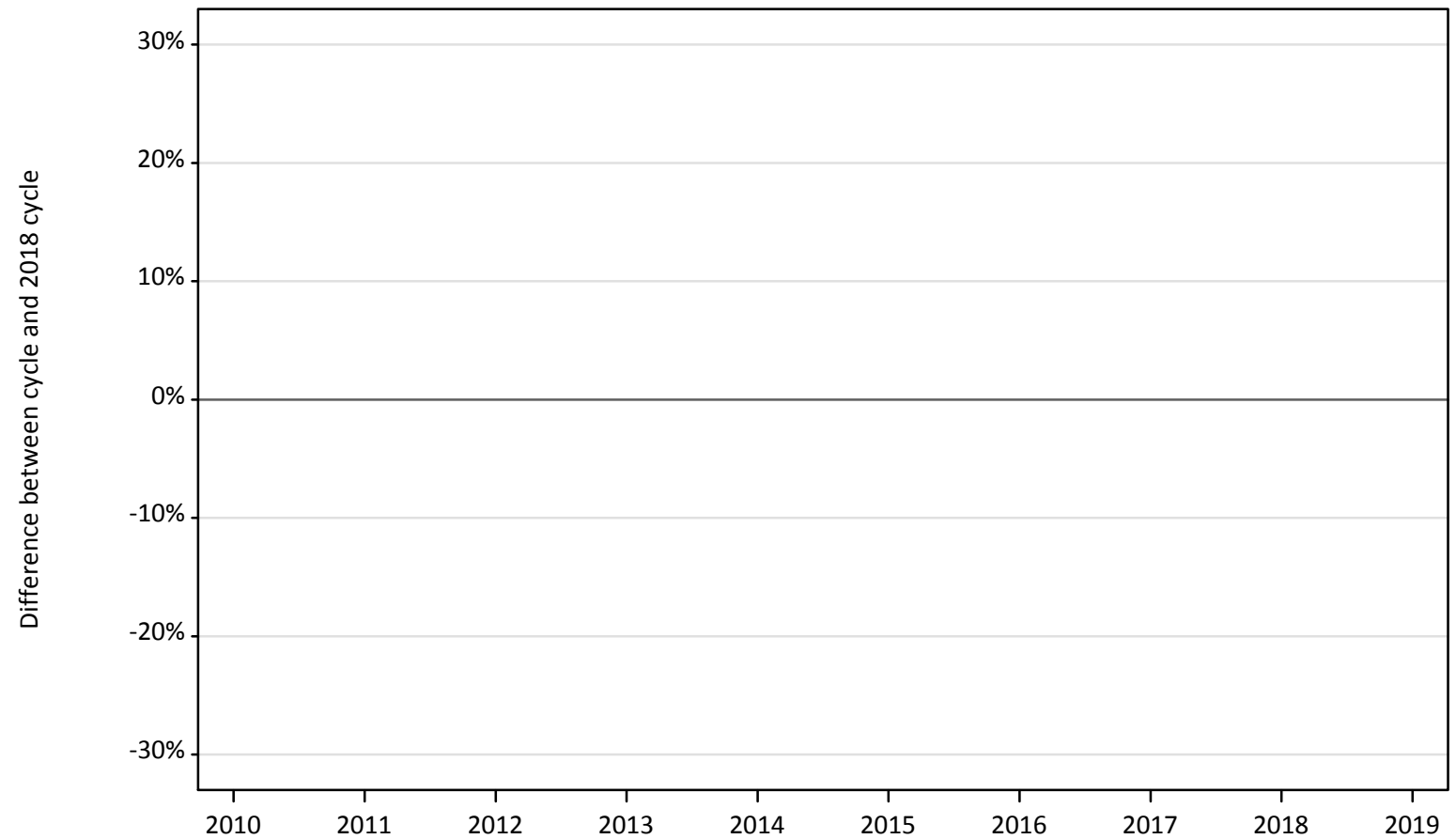
Applicant type	Status	2010	2011	2012	2013	2014	2015	2016	2017	2018	2019
Main scheme	Placed (Clearing)	-68%	-75%	-66%	-52%	-53%	-30%	-13%	7%	0%	11%
	Placed (Firm)	-22%	-16%	-27%	-23%	-16%	-8%	2%	-1%	0%	-1%
	Placed (Insurance)	-34%	-23%	-35%	-29%	-20%	-8%	0%	0%	0%	0%
	Placed (Other)	0%	2%	-26%	-15%	-18%	-15%	1%	-2%	0%	7%

Note: The percentage change is not recorded in the above table for groups with fewer than 10 placed applicants in that cycle or in the 2018 cycle.

A.9 Main scheme applicants placed through adjustment: 1 day after A level results day

Placed through adjustment: difference between cycle and 2018 cycle

Placed (Adjustment)



Note: The percentage change is not plotted in the above chart for groups with fewer than 30 placed applicants in any one cycle.

A.10 Main scheme applicants placed through adjustment: 1 day after A level results day

Placed through adjustment: applicants at 1 day after A level results day

Applicant type	Status	2010	2011	2012	2013	2014	2015	2016	2017	2018	2019
Main scheme	Placed (Adjustment)	0	0	10	10	10	10	10	20	10	10

A.11 Main scheme applicants placed through adjustment: 1 day after A level results day

Placed through adjustment: difference between cycle and 2018 cycle

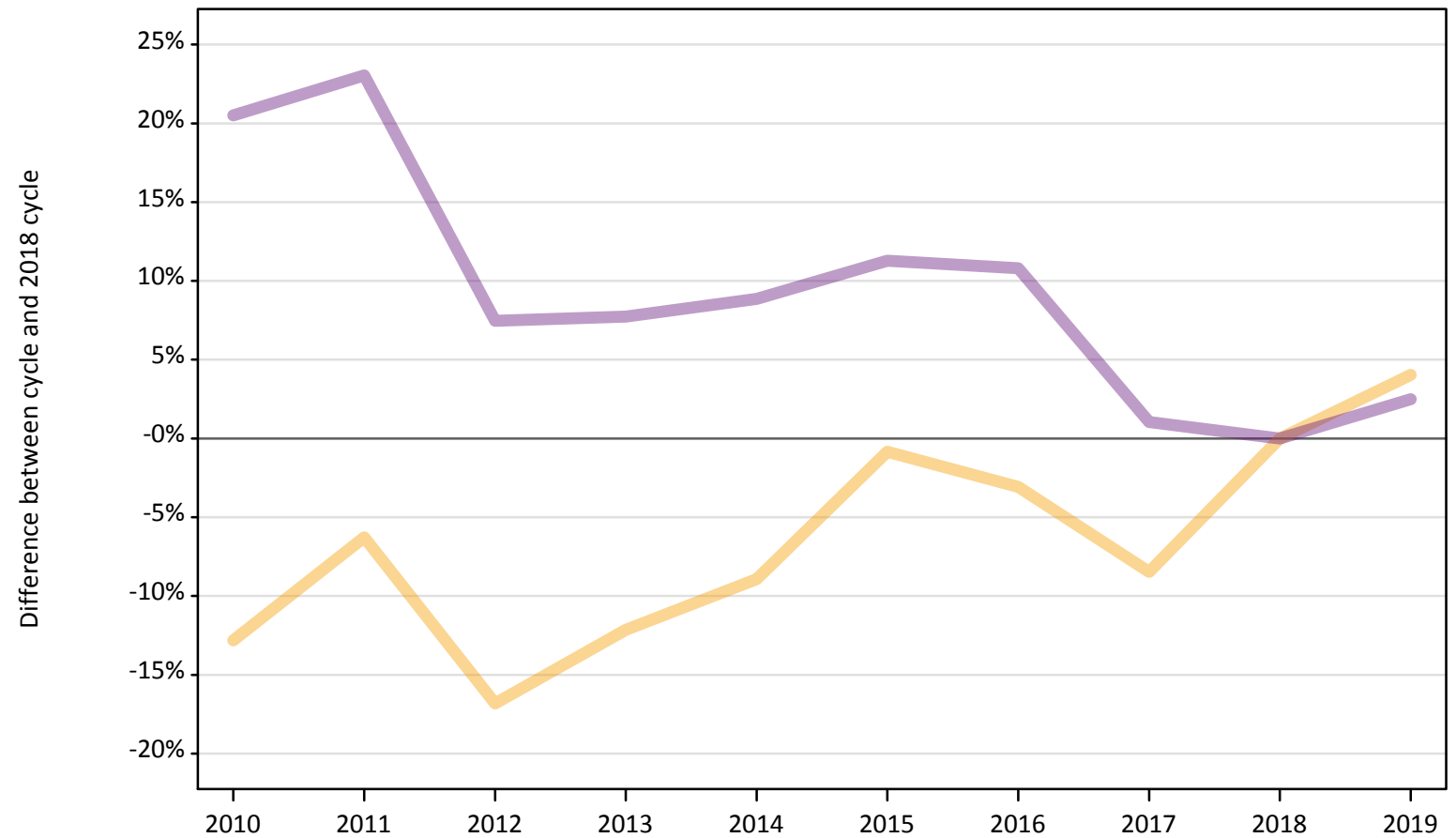
Applicant type	Status	2010	2011	2012	2013	2014	2015	2016	2017	2018	2019
Main scheme	Placed (Adjustment)										

Note: The percentage change is not recorded in the above table for groups with fewer than 10 placed applicants in that cycle or in the 2018 cycle.

A.12 Main scheme applicants not currently placed from the EU - excluding UK: 1 day after A level results day

Applicants in unplaced states: difference between cycle and 2018 cycle

— Holding offer
— Free to be placed in Clearing



Note: The percentage change is not plotted in the above chart for groups with fewer than 30 unplaced applicants in any one cycle.

A.13 Main scheme applicants not currently placed from the EU - excluding UK: 1 day after A level results day

Applicants in unplaced states: applicants at 1 day after A level results day

Applicant type	Status	2010	2011	2012	2013	2014	2015	2016	2017	2018	2019
Main scheme	Holding offer	7,880	8,470	7,520	7,940	8,240	8,970	8,760	8,280	9,040	9,410
	Free to be placed in Clearing	15,590	15,910	13,900	13,930	14,080	14,390	14,330	13,070	12,930	13,260

A.14 Main scheme applicants not currently placed from the EU - excluding UK: 1 day after A level results day

Applicants in unplaced states: difference between cycle and 2018 cycle

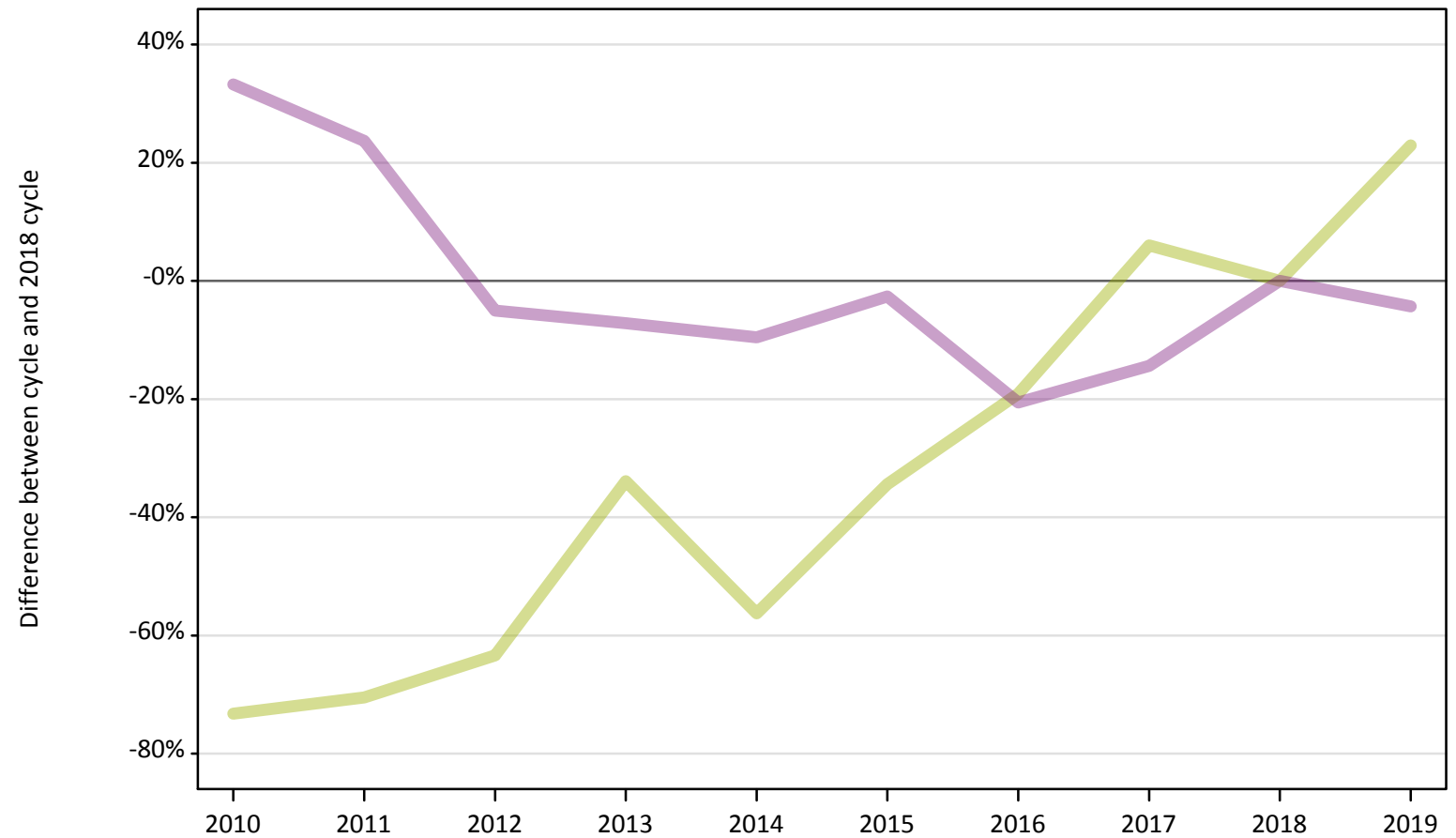
Applicant type	Status	2010	2011	2012	2013	2014	2015	2016	2017	2018	2019
Main scheme	Holding offer	-13%	-6%	-17%	-12%	-9%	-1%	-3%	-8%	0%	4%
	Free to be placed in Clearing	21%	23%	7%	8%	9%	11%	11%	1%	0%	2%

Note: The percentage change is not recorded in the above table for groups with fewer than 10 unplaced applicants in that cycle or in the 2018 cycle.

A.15 Direct to Clearing applicants from the EU - excluding UK: 1 day after A level results day

Direct to Clearing: difference between cycle and 2018 cycle

- Placed (Direct to Clearing)
- Other (Direct to Clearing)



Note: The percentage change is not plotted in the above chart for groups with fewer than 30 placed applicants in any one cycle.

A.16 Direct to Clearing applicants from the EU - excluding UK: 1 day after A level results day

Direct to Clearing 1 day after A level results day

Applicant type	Status	2010	2011	2012	2013	2014	2015	2016	2017	2018	2019
Direct to Clearing	Placed (Direct to Clearing)	50	50	70	120	80	120	150	190	180	230
	Other (Direct to Clearing)	560	520	400	390	380	410	330	360	420	400

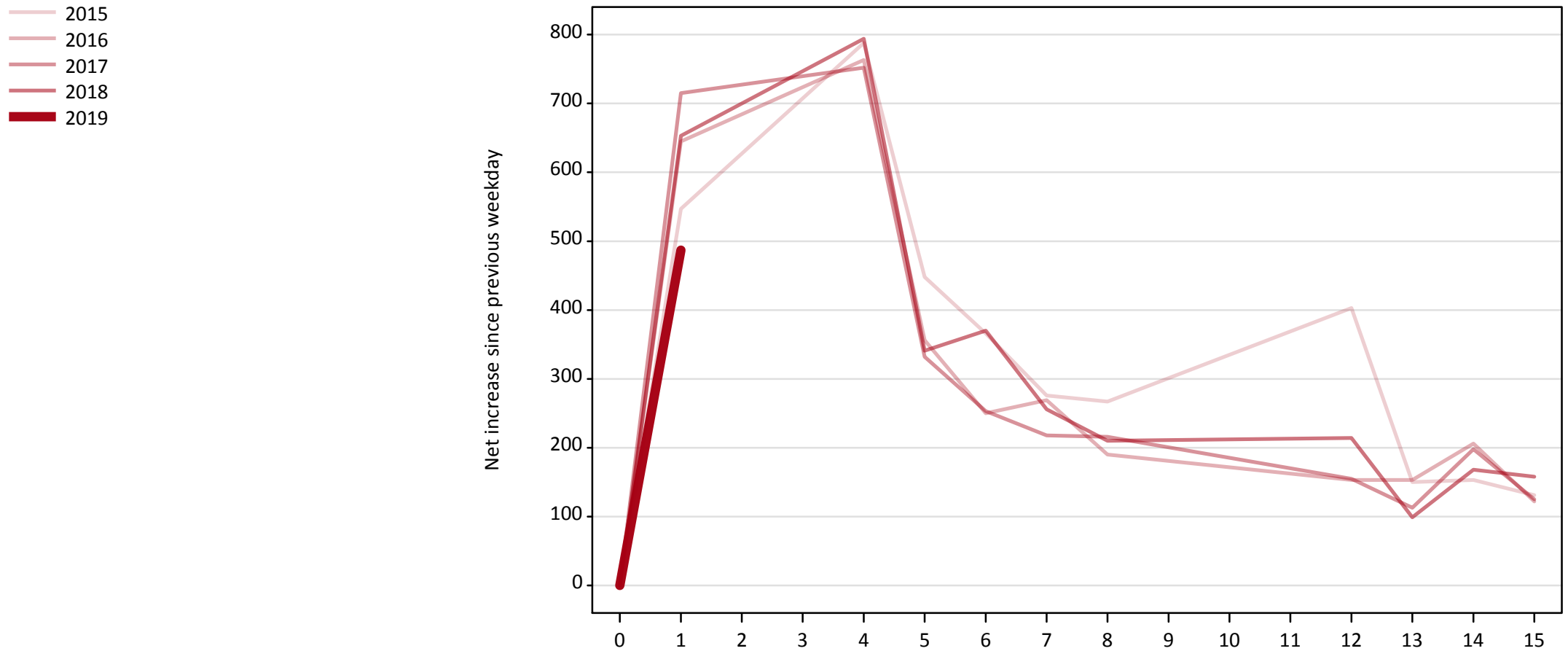
A.17 Direct to Clearing applicants from the EU - excluding UK: 1 day after A level results day

Direct to Clearing: difference between cycle and 2018 cycle

Applicant type	Status	2010	2011	2012	2013	2014	2015	2016	2017	2018	2019
Direct to Clearing	Placed (Direct to Clearing)	-73%	-70%	-63%	-34%	-56%	-34%	-19%	6%	0%	23%
	Other (Direct to Clearing)	33%	24%	-5%	-7%	-10%	-3%	-21%	-14%	0%	-4%

Note: The percentage change is not recorded in the above table for groups with fewer than 10 placed applicants in that cycle or in the 2018 cycle.

A.18 All Placed: Daily net change (from the EU - excluding UK)
Net increase since previous weekday (2019 cycle up to 1 day after A level results day)

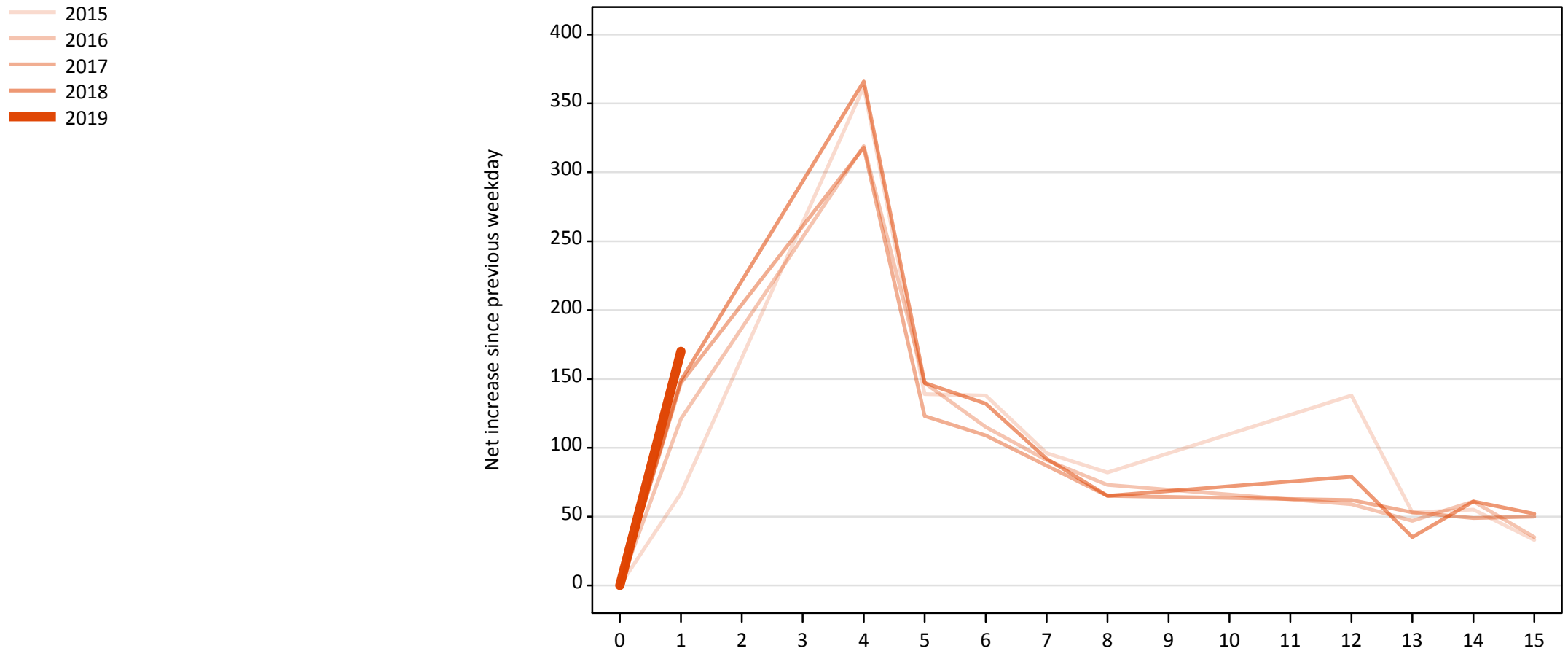


A.19 All Placed: Daily net change (from the EU - excluding UK)

Net increase since previous weekday (2019 cycle up to 1 day after A level results day)

Applicant status, days since A level results day		2015	2016	2017	2018	2019
All Placed	0	0	0	0	0	0
	1	550	650	720	650	490
	4	790	760	750	790	
	5	450	360	330	340	
	6	370	250	250	370	
	7	280	270	220	260	
	8	270	190	220	210	
	12	400	150	160	210	
	13	150	150	110	100	
	14	150	210	200	170	
	15	130	120	130	160	

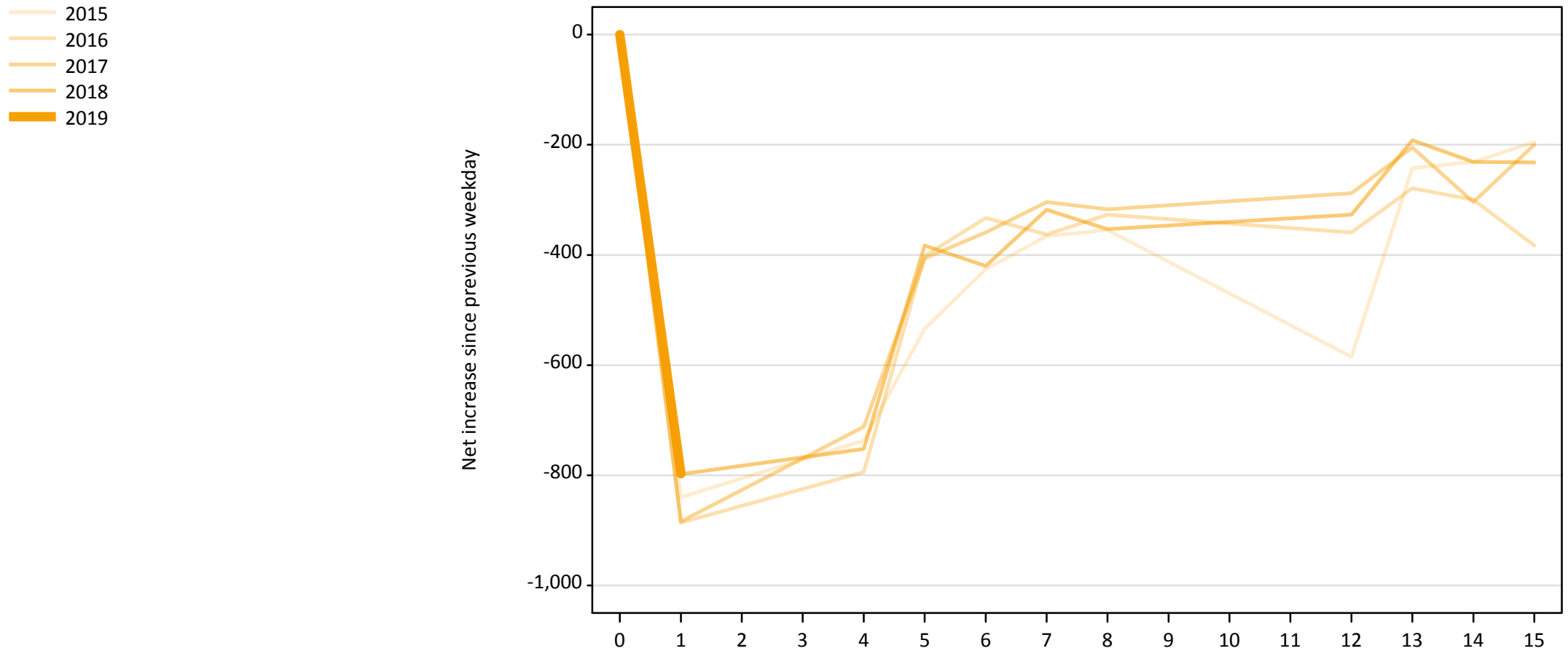
A.20 Placed through Clearing only: Daily net change (from the EU - excluding UK)
Net increase since previous weekday (2019 cycle up to 1 day after A level results day)



A.21 Placed through Clearing only: Daily net change (from the EU - excluding UK)
 Net increase since previous weekday (2019 cycle up to 1 day after A level results day)

Applicant status, days since A level results day		2015	2016	2017	2018	2019
Placed through Clearing only	0	0	0	0	0	0
	1	70	120	150	150	170
	4	360	320	320	370	
	5	140	150	120	150	
	6	140	120	110	130	
	7	100	90	90	90	
	8	80	70	70	70	
	12	140	60	60	80	
	13	50	50	50	40	
	14	60	60	50	60	
	15	30	40	50	50	

A.22 Holding Offer: Daily net change (from the EU - excluding UK)
Net increase since previous weekday (2019 cycle up to 1 day after A level results day)



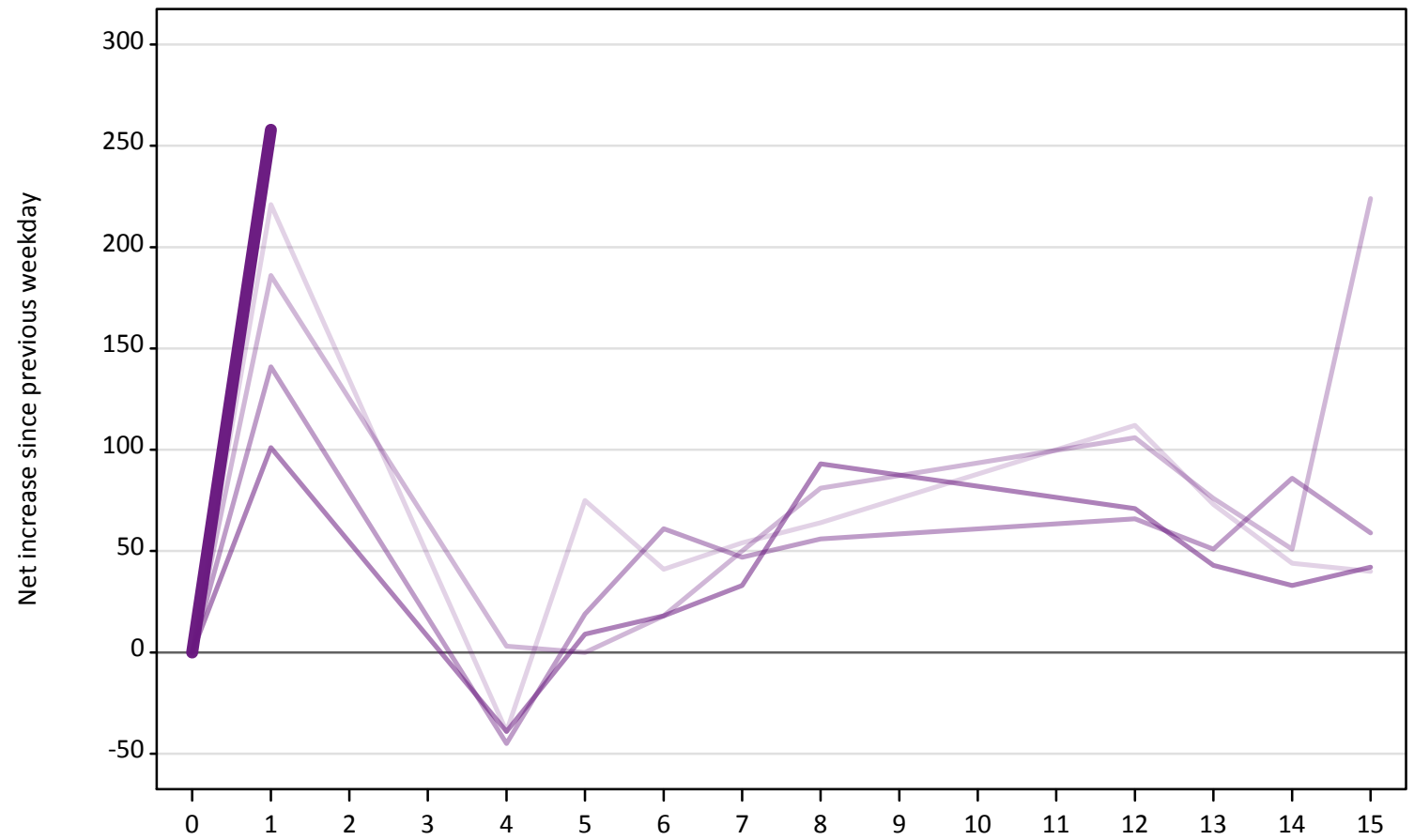
A.23 Holding Offer: Daily net change (from the EU - excluding UK)

Net increase since previous weekday (2019 cycle up to 1 day after A level results day)

Applicant status, days since A level results day		2015	2016	2017	2018	2019
Holding Offer	0	0	0	0	0	0
	1	-840	-890	-880	-800	-800
	4	-740	-790	-710	-750	
	5	-530	-400	-410	-380	
	6	-430	-330	-360	-420	
	7	-370	-360	-300	-320	
	8	-360	-330	-320	-350	
	12	-590	-360	-290	-330	
	13	-240	-280	-210	-190	
	14	-230	-300	-300	-230	
	15	-200	-380	-200	-230	

A.24 Free to be placed in Clearing: Daily net change (from the EU - excluding UK)
Net increase since previous weekday (2019 cycle up to 1 day after A level results day)

- 2015
- 2016
- 2017
- 2018
- 2019



A.25 Free to be placed in Clearing: Daily net change (from the EU - excluding UK)
 Net increase since previous weekday (2019 cycle up to 1 day after A level results day)

Applicant status, days since A level results day		2015	2016	2017	2018	2019
Free to be placed in Clearing	0	0	0	0	0	0
	1	220	190	140	100	260
	4	-40	0	-50	-40	
	5	80	0	20	10	
	6	40	20	60	20	
	7	50	50	50	30	
	8	60	80	60	90	
	12	110	110	70	70	
	13	70	80	50	40	
	14	40	50	90	30	
	15	40	220	60	40	