

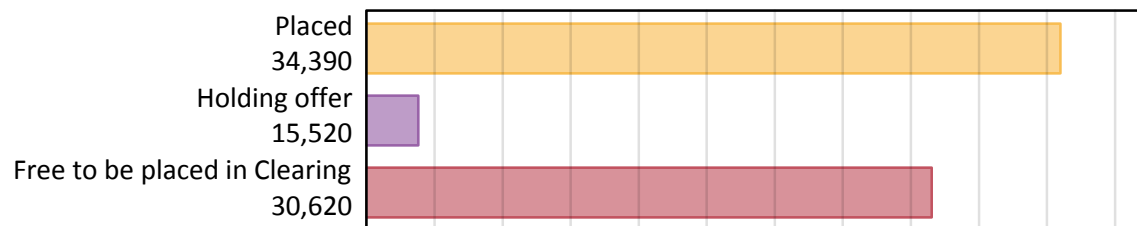
Daily Clearing Analysis: Overview

Analysis at 00:05 on Friday 16 August 2019 (1 day after A level results day)

A.1 Applicants by type and status from outside the EU, 2019 cycle

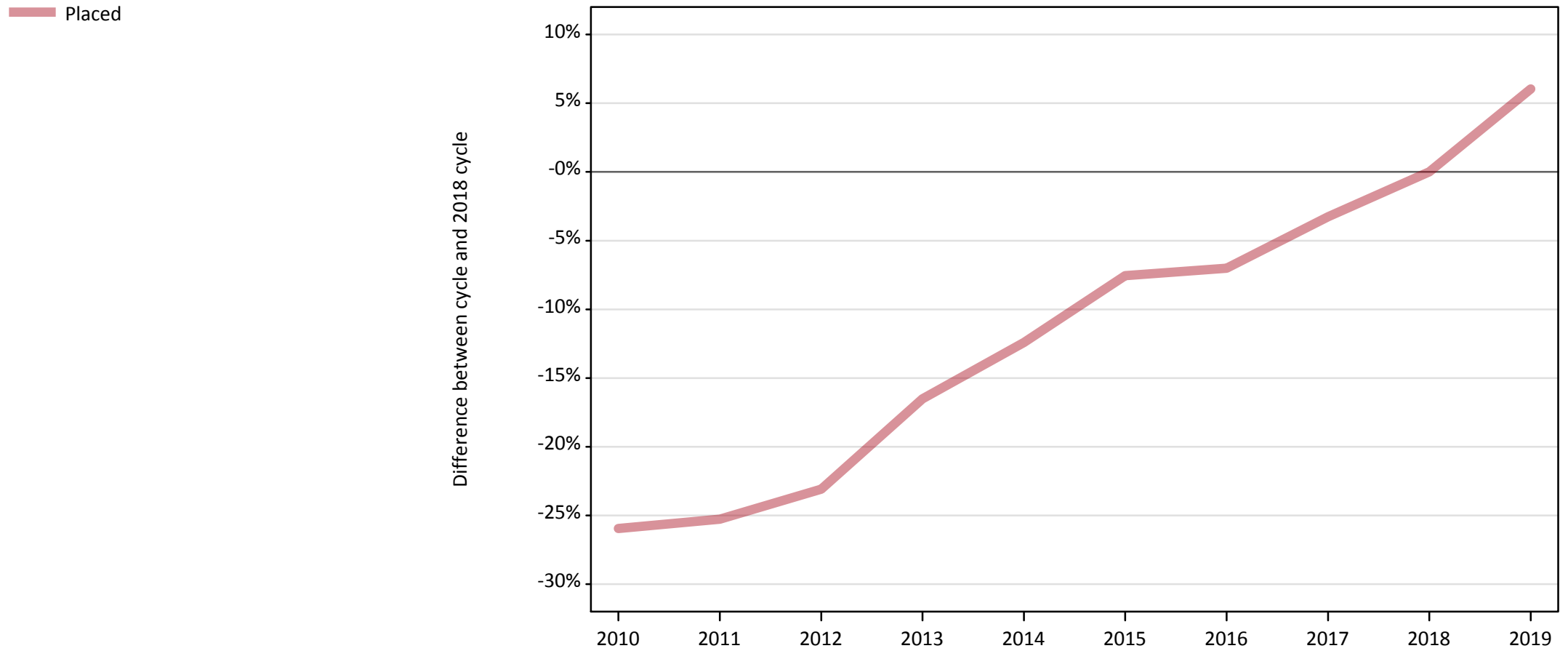
Applicant type	Status	2019
Main scheme	Placed (Clearing)	1,160
	Placed (Adjustment)	20
	Placed (Firm)	27,910
	Placed (Insurance)	3,090
	Placed (Other)	1,860
	Holding offer	15,520
	Free to be placed in Clearing	30,620
Direct to Clearing	Placed (Direct to Clearing)	350
	Other (Direct to Clearing)	870
All applicants	Placed	34,390

A.2 Summary of applicants who are placed, holding offers or free to be placed in Clearing (outside the EU)



A.3 All placed applicants from outside the EU: 1 day after A level results day

All placed applicants: difference between cycle and 2018 cycle



Note: The percentage change is not plotted in the above chart for groups with fewer than 30 placed applicants in any one cycle.

A.4 All placed applicants from outside the EU: 1 day after A level results day

All placed applicants: applicants at 1 day after A level results day

Applicant type	Status	2010	2011	2012	2013	2014	2015	2016	2017	2018	2019
All applicants	Placed	24,020	24,230	24,950	27,080	28,410	29,980	30,160	31,380	32,430	34,390

A.5 All placed applicants from outside the EU: 1 day after A level results day

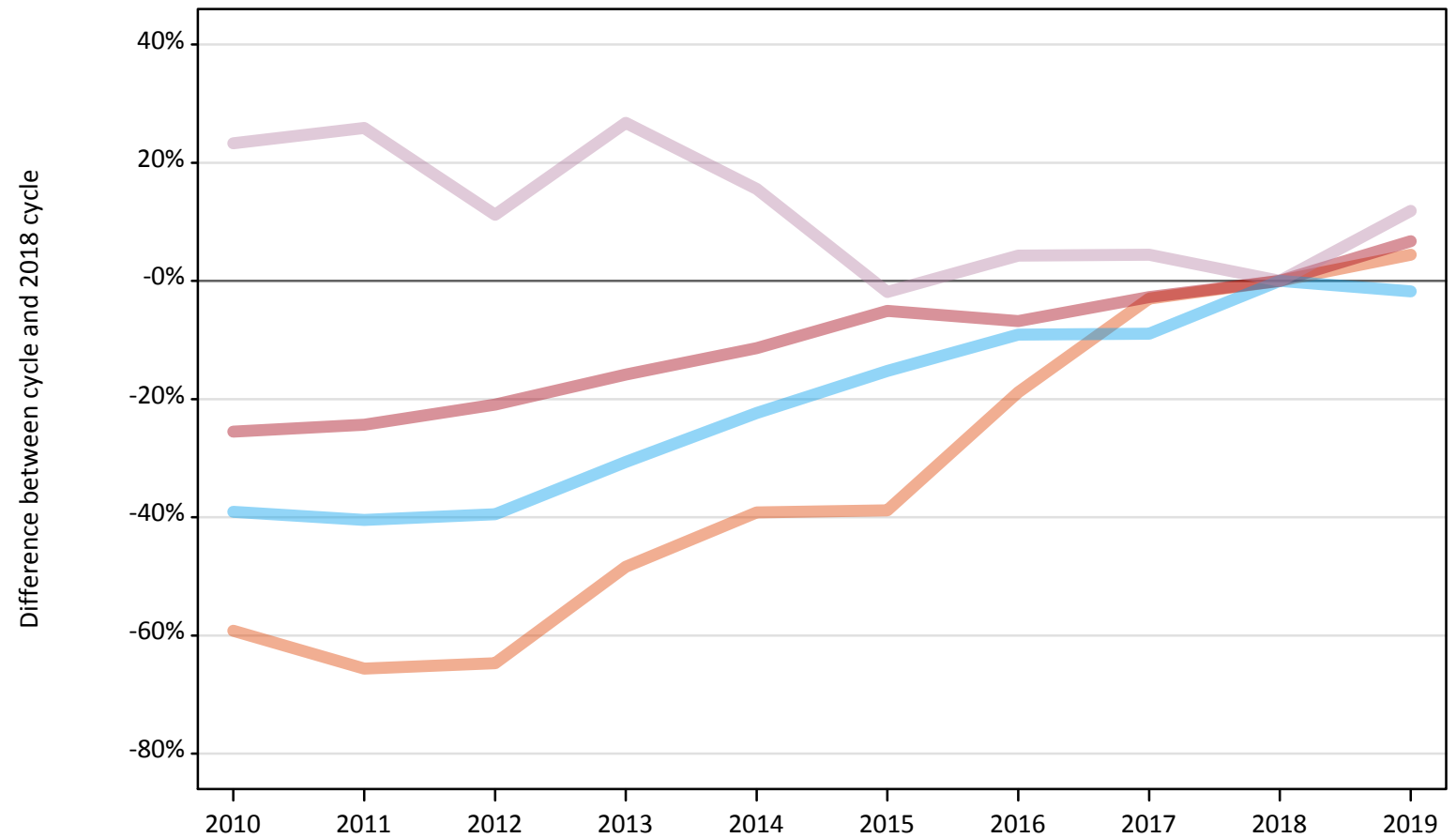
All placed applicants: difference between cycle and 2018 cycle

Applicant type	Status	2010	2011	2012	2013	2014	2015	2016	2017	2018	2019
All applicants	Placed	-26%	-25%	-23%	-17%	-12%	-8%	-7%	-3%	0%	6%

Note: The percentage change is not recorded in the above table for groups with fewer than 10 placed applicants in that cycle or in the 2018 cycle.

A.6 Placed main scheme applicants from outside the EU: 1 day after A level results day
All Main scheme placed routes (excluding Adjustment): difference between cycle and 2018 cycle

- Placed (Clearing)
- Placed (Firm)
- Placed (Insurance)
- Placed (Other)



Note: The percentage change is not plotted in the above chart for groups with fewer than 30 placed applicants in any one cycle.

A.7 Placed main scheme applicants from outside the EU: 1 day after A level results day

All Main scheme placed routes (excluding Adjustment): applicants at 1 day after A level results day

Applicant type	Status	2010	2011	2012	2013	2014	2015	2016	2017	2018	2019
Main scheme	Placed (Clearing)	450	380	390	570	670	680	900	1,080	1,110	1,160
	Placed (Firm)	19,490	19,790	20,680	22,020	23,190	24,830	24,380	25,440	26,160	27,910
	Placed (Insurance)	1,920	1,870	1,910	2,180	2,440	2,670	2,860	2,870	3,150	3,090
	Placed (Other)	2,050	2,090	1,850	2,110	1,920	1,630	1,730	1,740	1,660	1,860

A.8 Placed main scheme applicants from outside the EU: 1 day after A level results day

All Main scheme placed routes (excluding Adjustment): difference between cycle and 2018 cycle

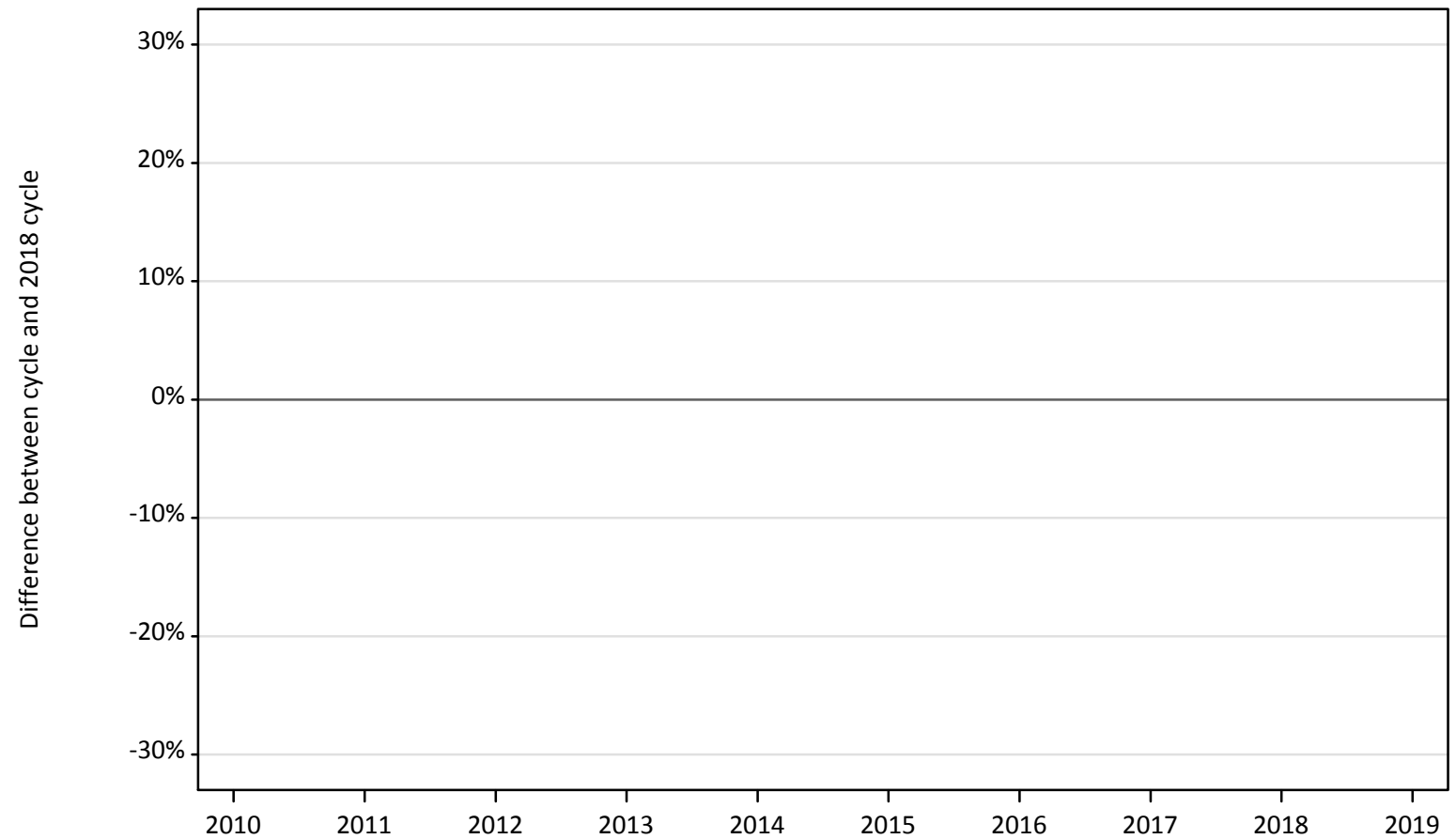
Applicant type	Status	2010	2011	2012	2013	2014	2015	2016	2017	2018	2019
Main scheme	Placed (Clearing)	-59%	-66%	-65%	-48%	-39%	-39%	-19%	-3%	0%	4%
	Placed (Firm)	-26%	-24%	-21%	-16%	-11%	-5%	-7%	-3%	0%	7%
	Placed (Insurance)	-39%	-40%	-39%	-31%	-22%	-15%	-9%	-9%	0%	-2%
	Placed (Other)	23%	26%	11%	27%	16%	-2%	4%	4%	0%	12%

Note: The percentage change is not recorded in the above table for groups with fewer than 10 placed applicants in that cycle or in the 2018 cycle.

A.9 Main scheme applicants placed through adjustment: 1 day after A level results day

Placed through adjustment: difference between cycle and 2018 cycle

Placed (Adjustment)



Note: The percentage change is not plotted in the above chart for groups with fewer than 30 placed applicants in any one cycle.

A.10 Main scheme applicants placed through adjustment: 1 day after A level results day

Placed through adjustment: applicants at 1 day after A level results day

Applicant type	Status	2010	2011	2012	2013	2014	2015	2016	2017	2018	2019
Main scheme	Placed (Adjustment)	0	0	0	10	30	10	10	10	10	20

A.11 Main scheme applicants placed through adjustment: 1 day after A level results day

Placed through adjustment: difference between cycle and 2018 cycle

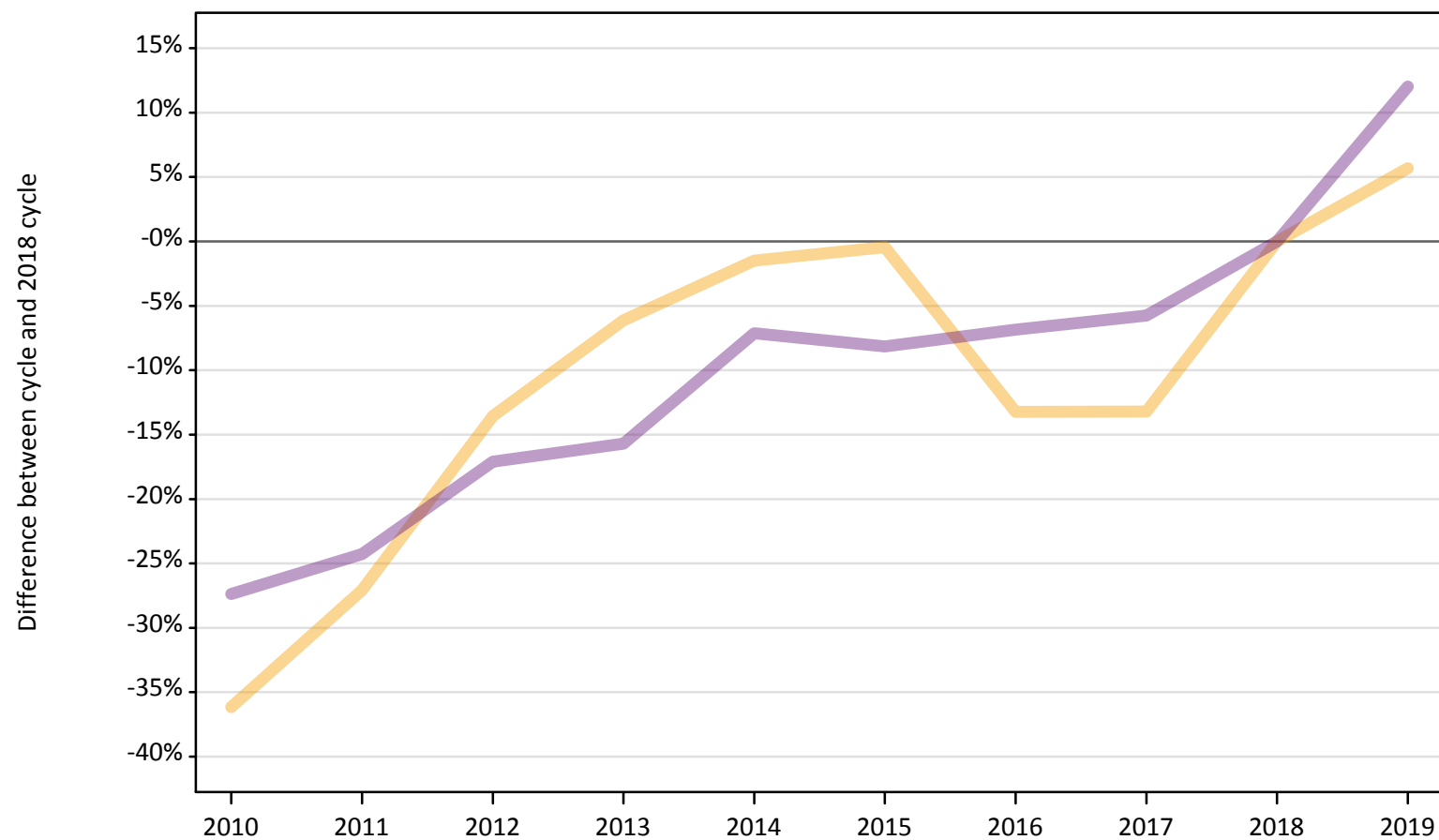
Applicant type	Status	2010	2011	2012	2013	2014	2015	2016	2017	2018	2019
Main scheme	Placed (Adjustment)										

Note: The percentage change is not recorded in the above table for groups with fewer than 10 placed applicants in that cycle or in the 2018 cycle.

A.12 Main scheme applicants not currently placed from outside the EU: 1 day after A level results day

Applicants in unplaced states: difference between cycle and 2018 cycle

— Holding offer
— Free to be placed in Clearing



Note: The percentage change is not plotted in the above chart for groups with fewer than 30 unplaced applicants in any one cycle.

A.13 Main scheme applicants not currently placed from outside the EU: 1 day after A level results day

Applicants in unplaced states: applicants at 1 day after A level results day

Applicant type	Status	2010	2011	2012	2013	2014	2015	2016	2017	2018	2019
Main scheme	Holding offer	9,380	10,710	12,700	13,790	14,470	14,620	12,750	12,750	14,690	15,520
	Free to be placed in Clearing	19,850	20,700	22,660	23,040	25,380	25,100	25,460	25,760	27,330	30,620

A.14 Main scheme applicants not currently placed from outside the EU: 1 day after A level results day

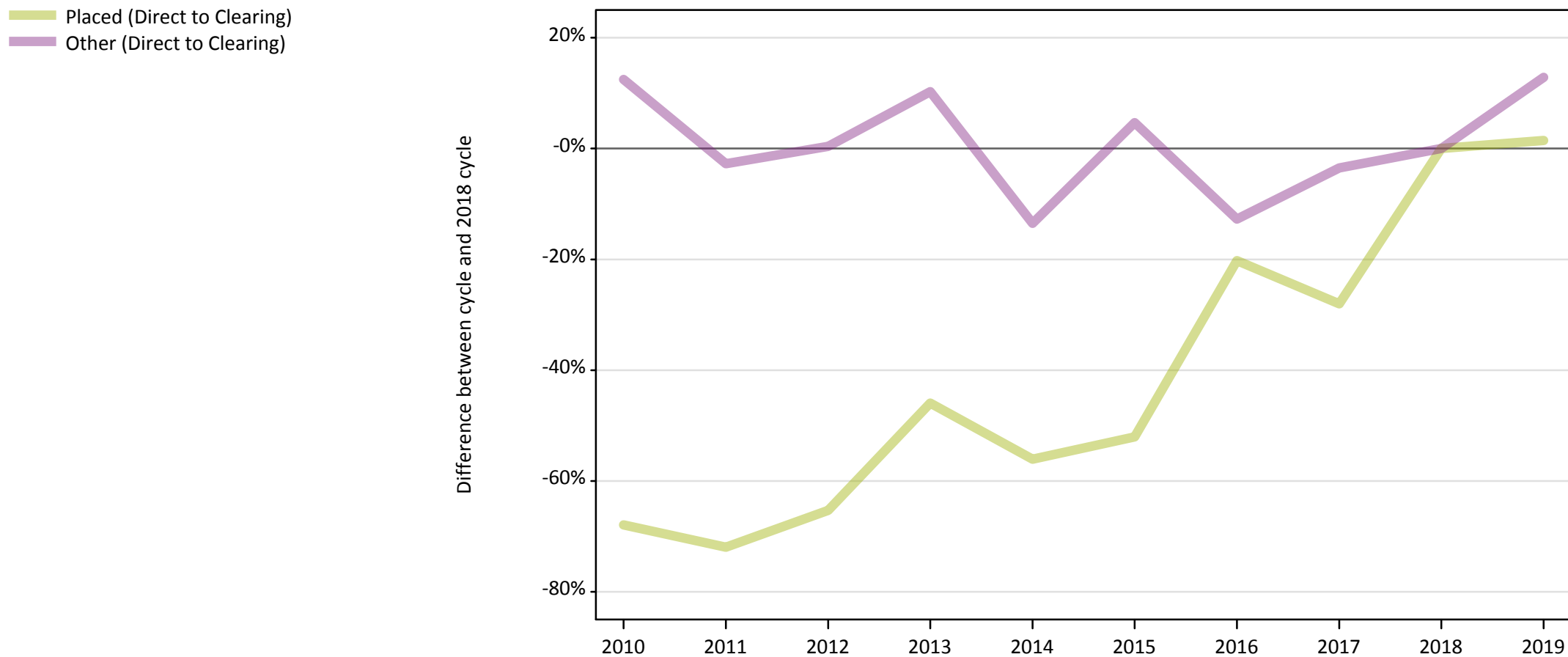
Applicants in unplaced states: difference between cycle and 2018 cycle

Applicant type	Status	2010	2011	2012	2013	2014	2015	2016	2017	2018	2019
Main scheme	Holding offer	-36%	-27%	-14%	-6%	-1%	-0%	-13%	-13%	0%	6%
	Free to be placed in Clearing	-27%	-24%	-17%	-16%	-7%	-8%	-7%	-6%	0%	12%

Note: The percentage change is not recorded in the above table for groups with fewer than 10 unplaced applicants in that cycle or in the 2018 cycle.

A.15 Direct to Clearing applicants from outside the EU: 1 day after A level results day

Direct to Clearing: difference between cycle and 2018 cycle



Note: The percentage change is not plotted in the above chart for groups with fewer than 30 placed applicants in any one cycle.

A.16 Direct to Clearing applicants from outside the EU: 1 day after A level results day

Direct to Clearing 1 day after A level results day

Applicant type	Status	2010	2011	2012	2013	2014	2015	2016	2017	2018	2019
Direct to Clearing	Placed (Direct to Clearing)	110	100	120	190	150	170	280	250	350	350
	Other (Direct to Clearing)	870	750	770	850	670	810	670	740	770	870

A.17 Direct to Clearing applicants from outside the EU: 1 day after A level results day

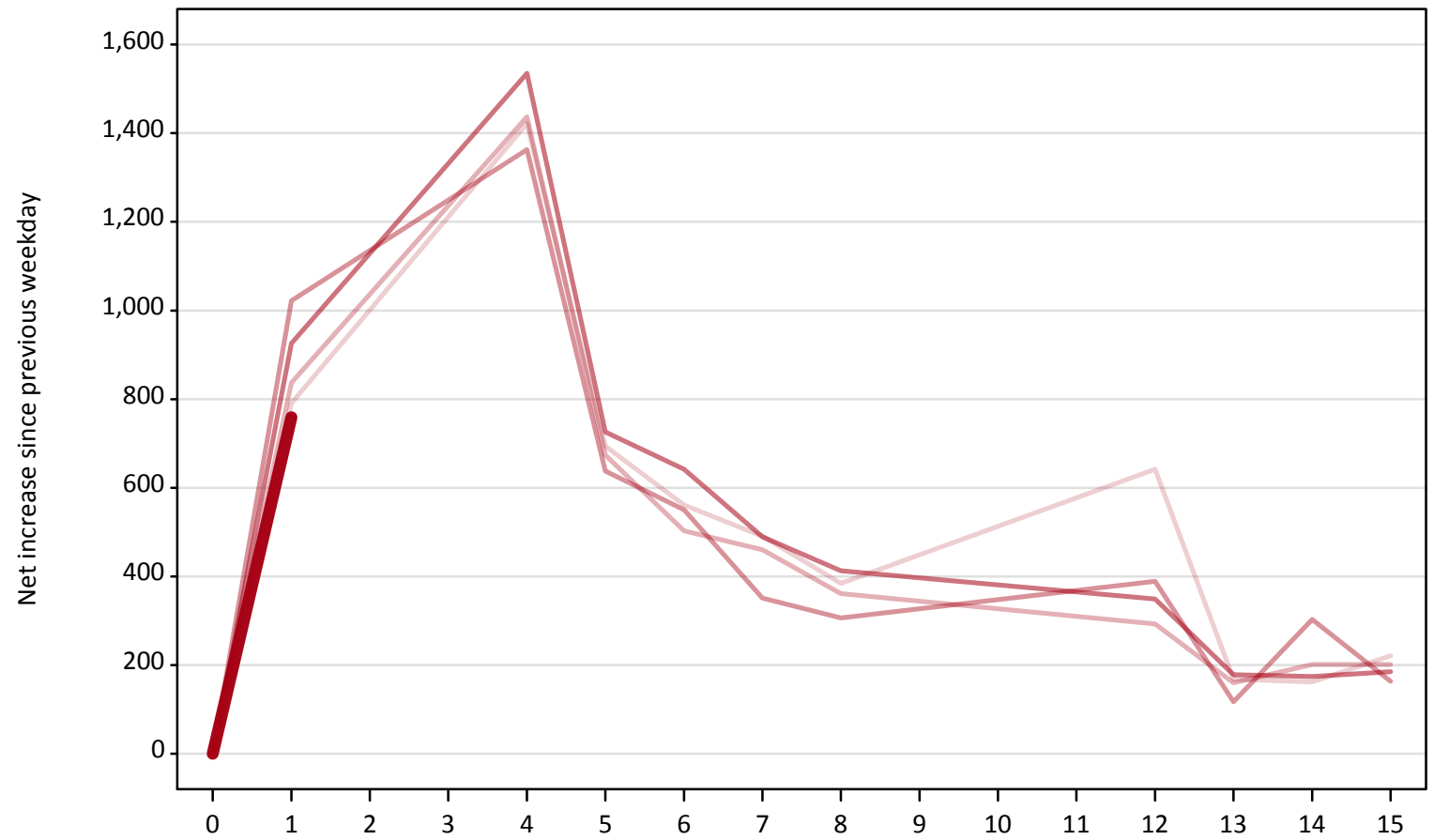
Direct to Clearing: difference between cycle and 2018 cycle

Applicant type	Status	2010	2011	2012	2013	2014	2015	2016	2017	2018	2019
Direct to Clearing	Placed (Direct to Clearing)	-68%	-72%	-65%	-46%	-56%	-52%	-20%	-28%	0%	1%
	Other (Direct to Clearing)	12%	-3%	0%	10%	-14%	5%	-13%	-4%	0%	13%

Note: The percentage change is not recorded in the above table for groups with fewer than 10 placed applicants in that cycle or in the 2018 cycle.

A.18 All Placed: Daily net change (from outside the EU)
Net increase since previous weekday (2019 cycle up to 1 day after A level results day)

- 2015
- 2016
- 2017
- 2018
- 2019**

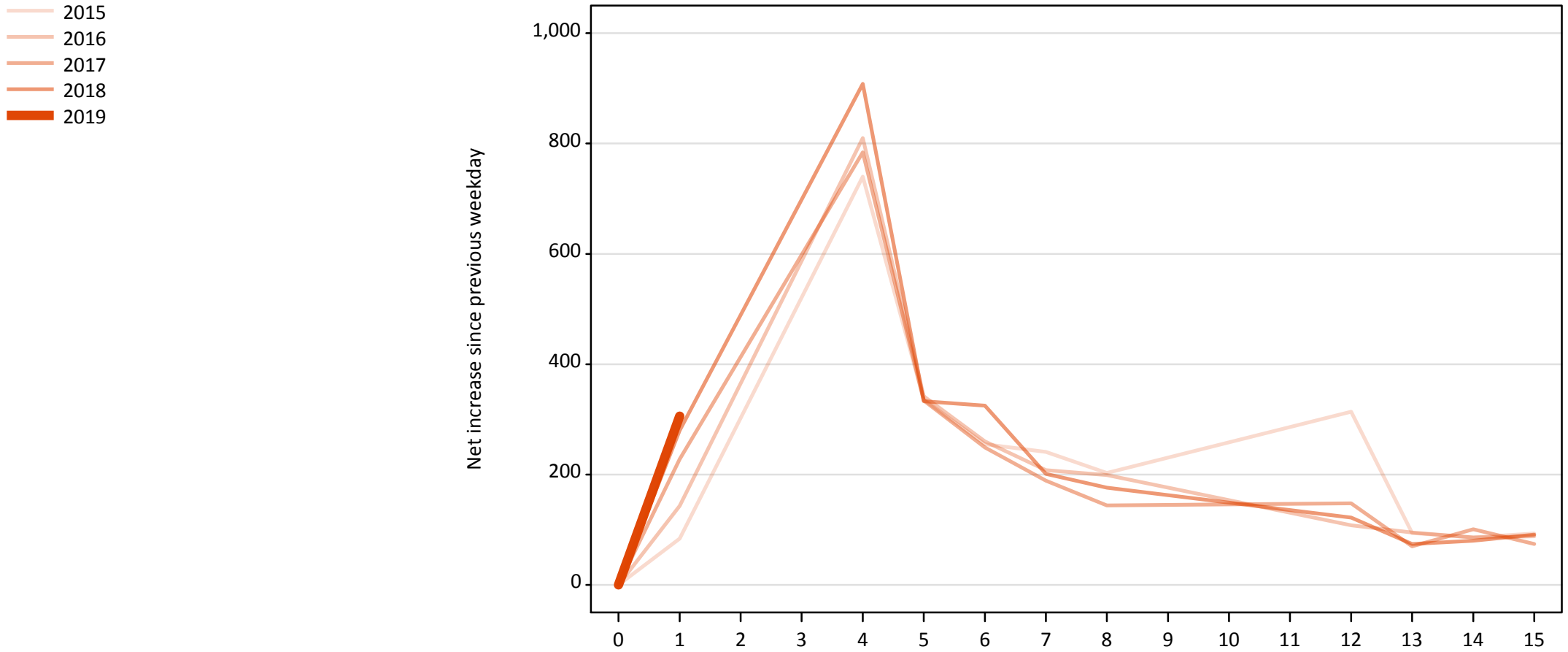


A.19 All Placed: Daily net change (from outside the EU)

Net increase since previous weekday (2019 cycle up to 1 day after A level results day)

Applicant status, days since A level results day	2015	2016	2017	2018	2019	
All Placed	0	0	0	0	0	
	1	790	840	1,020	930	760
	4	1,420	1,440	1,360	1,540	
	5	690	670	640	730	
	6	560	500	550	640	
	7	490	460	350	490	
	8	380	360	310	410	
	12	640	290	390	350	
	13	170	160	120	180	
	14	160	200	300	170	
	15	220	200	160	190	

A.20 Placed through Clearing only: Daily net change (from outside the EU)
Net increase since previous weekday (2019 cycle up to 1 day after A level results day)



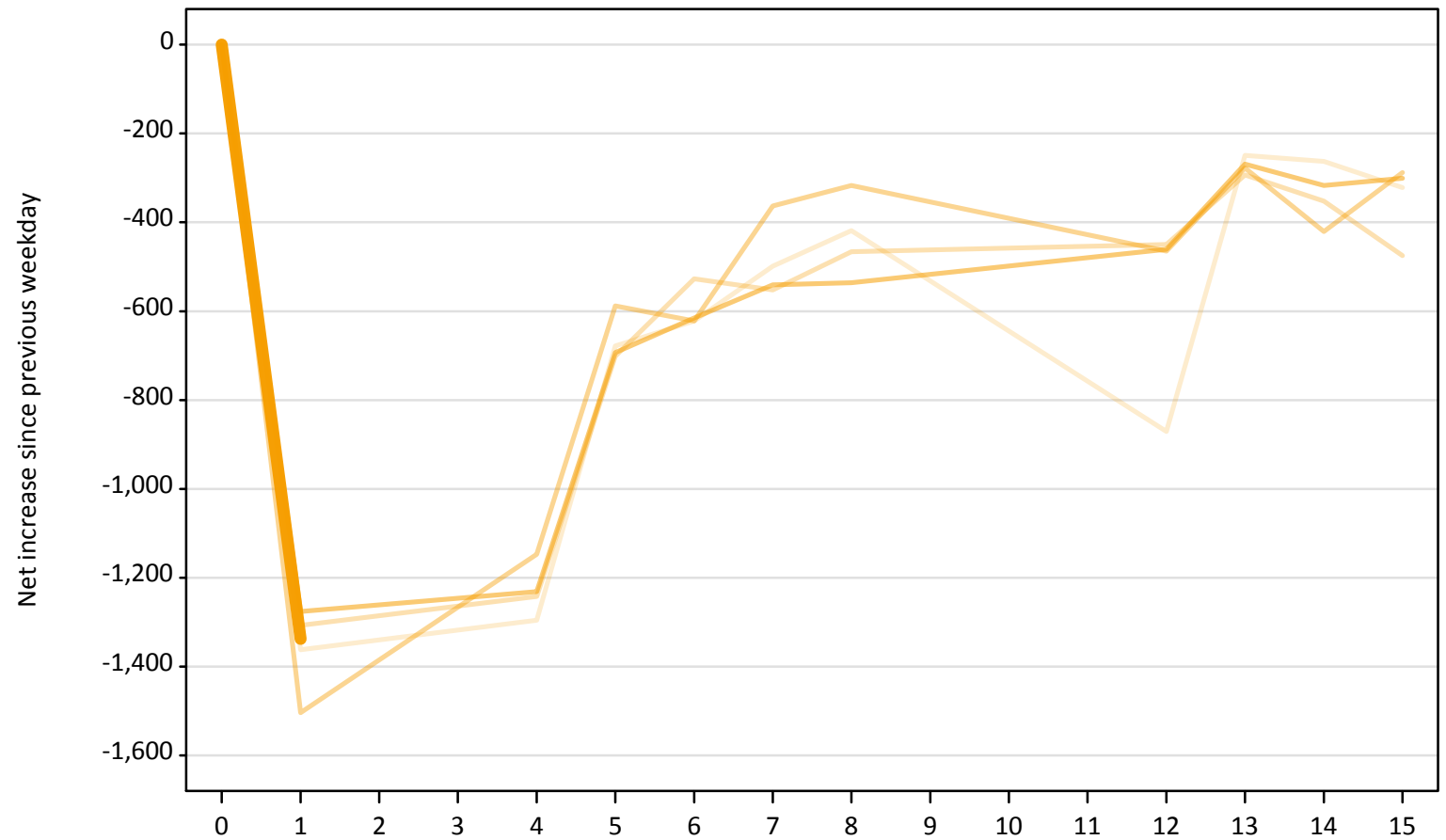
A.21 Placed through Clearing only: Daily net change (from outside the EU)

Net increase since previous weekday (2019 cycle up to 1 day after A level results day)

Applicant status, days since A level results day		2015	2016	2017	2018	2019
Placed through Clearing only	0	0	0	0	0	0
	1	80	140	230	280	310
	4	740	810	780	910	
	5	340	340	330	330	
	6	260	260	250	330	
	7	240	210	190	200	
	8	200	200	140	180	
	12	310	110	150	120	
	13	90	100	70	70	
	14	90	90	100	80	
	15	90	90	70	90	

A.22 Holding Offer: Daily net change (from outside the EU)
Net increase since previous weekday (2019 cycle up to 1 day after A level results day)

- 2015
- 2016
- 2017
- 2018
- 2019



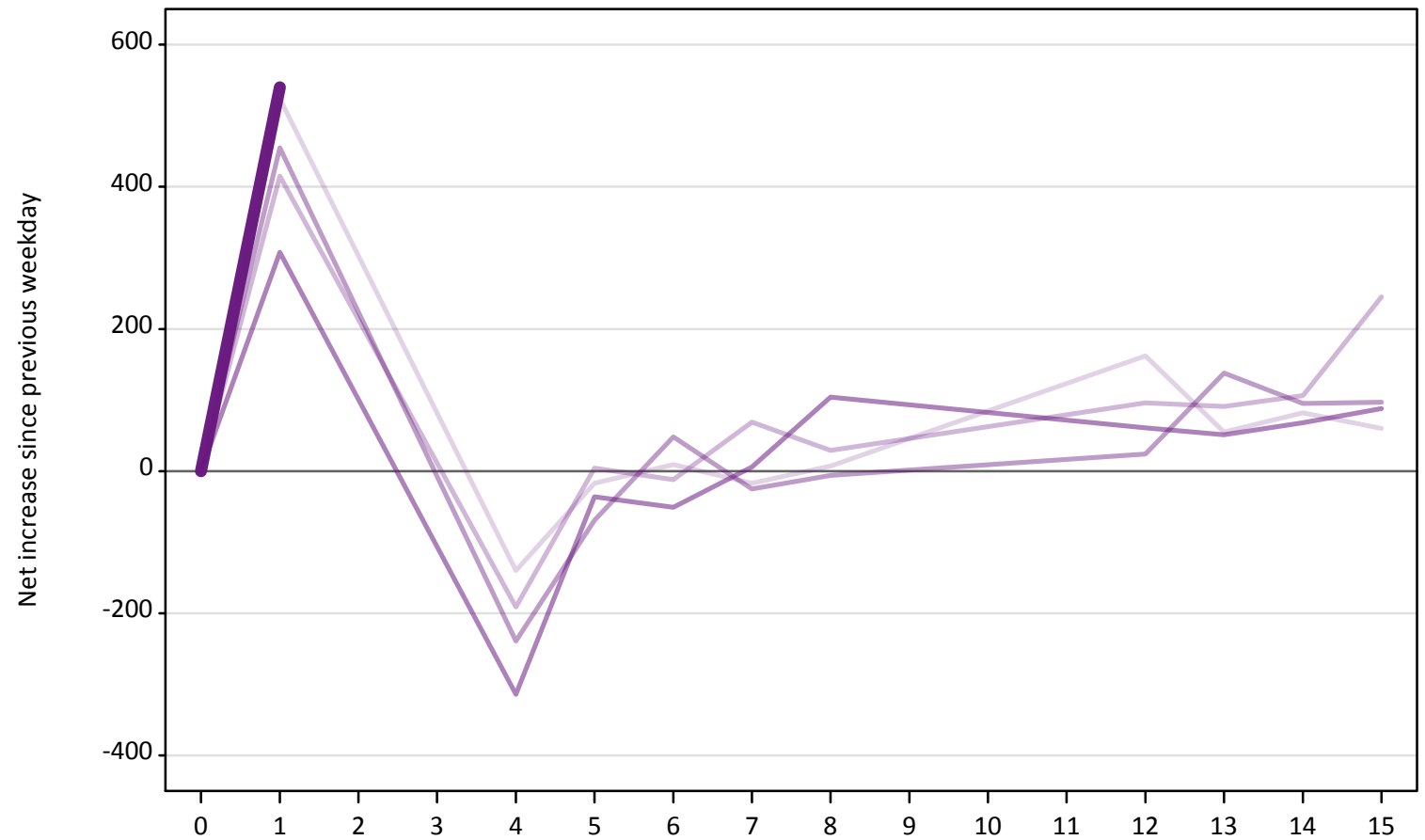
A.23 Holding Offer: Daily net change (from outside the EU)

Net increase since previous weekday (2019 cycle up to 1 day after A level results day)

Applicant status, days since A level results day		2015	2016	2017	2018	2019
Holding Offer	0	0	0	0	0	0
	1	-1,360	-1,310	-1,500	-1,280	-1,340
	4	-1,300	-1,240	-1,150	-1,230	
	5	-680	-700	-590	-690	
	6	-620	-530	-620	-620	
	7	-500	-550	-360	-540	
	8	-420	-470	-320	-540	
	12	-870	-450	-470	-460	
	13	-250	-290	-280	-270	
	14	-260	-350	-420	-320	
	15	-320	-480	-290	-300	

A.24 Free to be placed in Clearing: Daily net change (from outside the EU)
Net increase since previous weekday (2019 cycle up to 1 day after A level results day)

- 2015
- 2016
- 2017
- 2018
- 2019



A.25 Free to be placed in Clearing: Daily net change (from outside the EU)

Net increase since previous weekday (2019 cycle up to 1 day after A level results day)

Applicant status, days since A level results day		2015	2016	2017	2018	2019
Free to be placed in Clearing	0	0	0	0	0	0
	1	520	420	460	310	540
	4	-140	-190	-240	-310	
	5	-20	0	-70	-40	
	6	10	-10	50	-50	
	7	-20	70	-30	10	
	8	10	30	-10	100	
	12	160	100	20	60	
	13	60	90	140	50	
	14	80	110	100	70	
	15	60	250	100	90	