

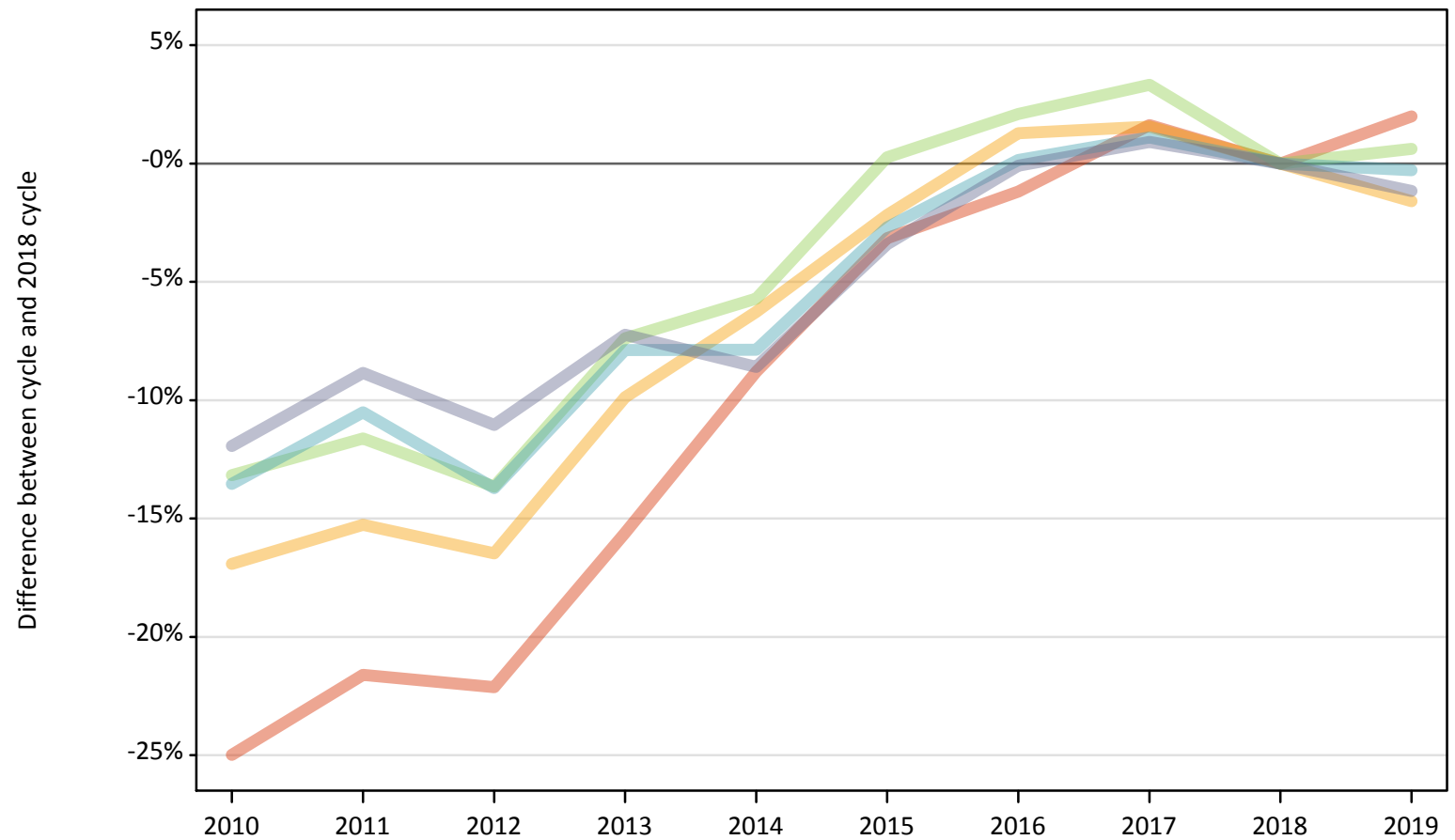
# Daily Clearing Analysis: POLAR4

Analysis at 00:05 on Friday 16 August 2019 (1 day after A level results day)

P.1 Placed 18 year old applicants from England by POLAR4 quintile: 1 day after A level results day

Placed 18 year old applicants: change relative to 2018 cycle totals

- Quintile 1
- Quintile 2
- Quintile 3
- Quintile 4
- Quintile 5



Note: The percentage change is not plotted in the above chart for groups with fewer than 30 placed applicants in any one cycle.

### P.2 Placed 18 year old applicants from England by POLAR4 quintile: 1 day after A level results day

Applicant Status	POLAR4	2010	2011	2012	2013	2014	2015	2016	2017	2018	2019
Placed	Quintile 1	14,790	15,450	15,350	16,640	17,980	19,090	19,480	20,030	19,710	20,110
	Quintile 2	22,780	23,230	22,900	24,700	25,690	26,820	27,760	27,840	27,410	26,980
	Quintile 3	28,800	29,310	28,640	30,720	31,280	33,260	33,860	34,270	33,170	33,370
	Quintile 4	35,630	36,870	35,560	37,960	37,960	40,100	41,270	41,660	41,210	41,090
	Quintile 5	51,980	53,800	52,510	54,750	53,960	57,010	58,970	59,560	59,030	58,340

### P.3 Placed 18 year old applicants from England by POLAR4 quintile: 1 day after A level results day

Placed 18 year old applicants: change relative to 2018 cycle totals

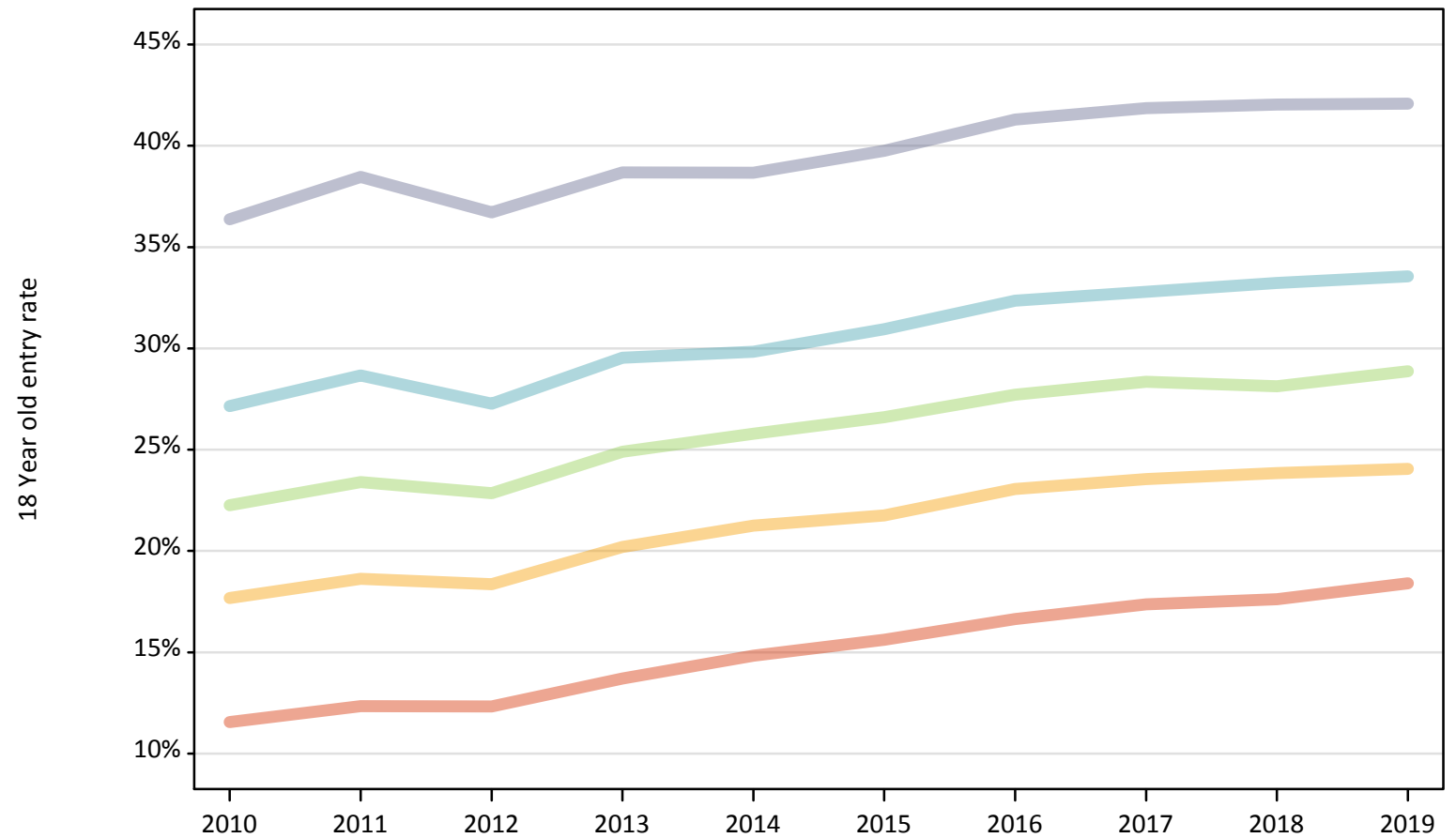
Applicant Status	POLAR4	2010	2011	2012	2013	2014	2015	2016	2017	2018	2019
Placed	Quintile 1	-25%	-22%	-22%	-16%	-9%	-3%	-1%	2%	0%	2%
	Quintile 2	-17%	-15%	-16%	-10%	-6%	-2%	1%	2%	0%	-2%
	Quintile 3	-13%	-12%	-14%	-7%	-6%	0%	2%	3%	0%	1%
	Quintile 4	-14%	-11%	-14%	-8%	-8%	-3%	0%	1%	0%	-0%
	Quintile 5	-12%	-9%	-11%	-7%	-9%	-3%	-0%	1%	0%	-1%

Note: The percentage change is not recorded in the above table for groups with fewer than 10 placed applicants in that cycle or in the 2018 cycle.

## P.4 Placed 18 year old applicants from England by POLAR4 quintile: 1 day after A level results day

Placed 18 year old applicants: entry rate

- Quintile 1
- Quintile 2
- Quintile 3
- Quintile 4
- Quintile 5



**P.5 Placed 18 year old applicants from England by POLAR4 quintile: 1 day after A level results day**

Placed 18 year old applicants: entry rate

Applicant Status	POLAR4	2010	2011	2012	2013	2014	2015	2016	2017	2018	2019
Placed	Quintile 1	11.6%	12.3%	12.3%	13.7%	14.8%	15.6%	16.6%	17.4%	17.6%	18.4%
	Quintile 2	17.7%	18.6%	18.4%	20.2%	21.3%	21.8%	23.1%	23.5%	23.8%	24.1%
	Quintile 3	22.3%	23.4%	22.9%	24.9%	25.8%	26.6%	27.7%	28.4%	28.1%	28.9%
	Quintile 4	27.2%	28.7%	27.3%	29.5%	29.8%	30.9%	32.4%	32.8%	33.2%	33.6%
	Quintile 5	36.4%	38.5%	36.7%	38.7%	38.7%	39.8%	41.3%	41.9%	42.0%	42.1%

**P.6 Placed 18 year old applicants from England by POLAR4 quintile: 1 day after A level results day**

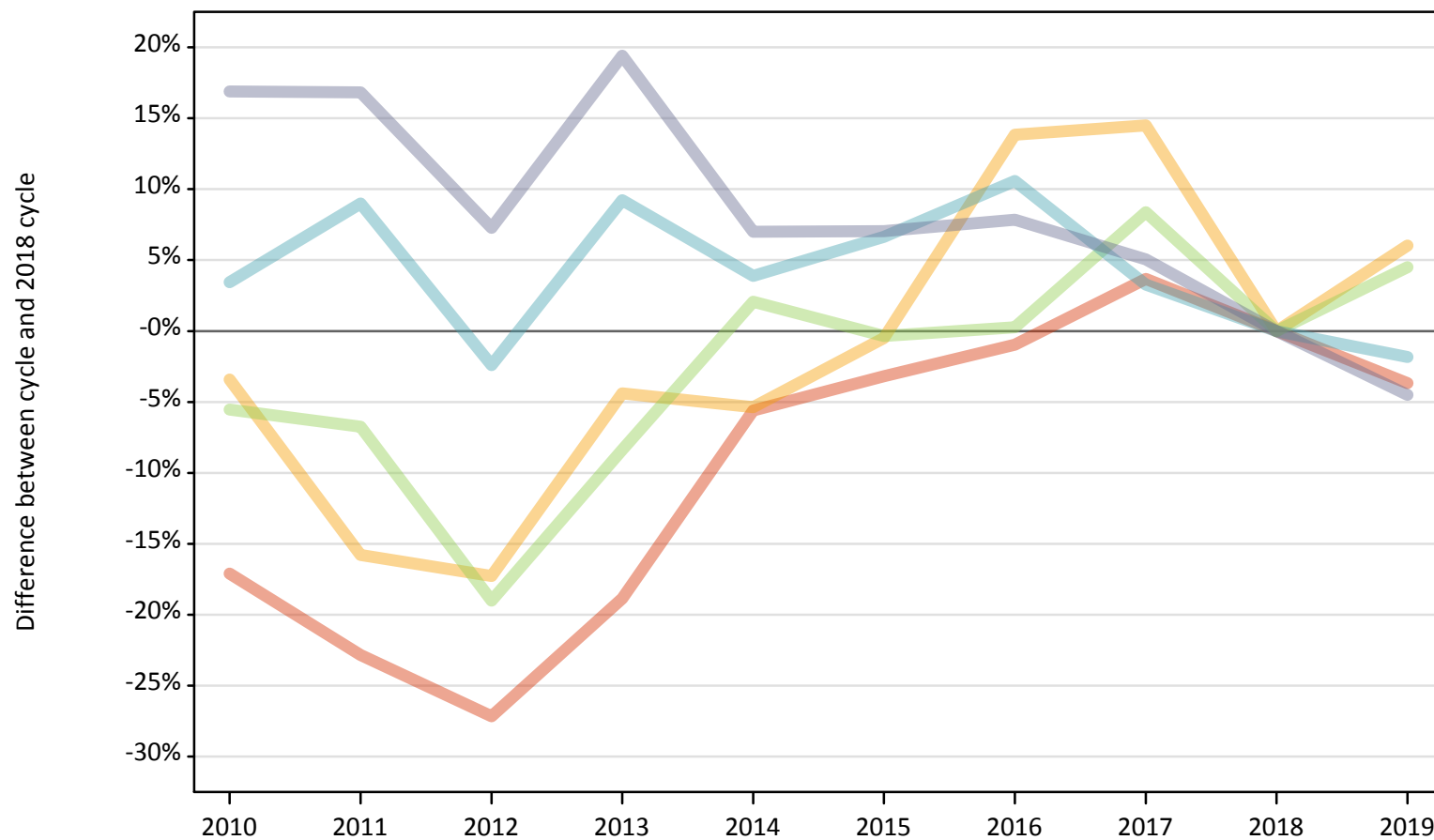
Placed 18 year old applicants: entry rate (indexed to 100 = Quintile 1)

Applicant Status	POLAR4	2010	2011	2012	2013	2014	2015	2016	2017	2018	2019
Placed	Quintile 1	100	100	100	100	100	100	100	100	100	100
	Quintile 2	153	151	149	147	143	139	139	136	135	131
	Quintile 3	192	190	185	182	174	170	167	163	160	157
	Quintile 4	235	232	221	216	201	198	194	189	189	182
	Quintile 5	315	312	298	282	261	254	248	241	239	229

### P.7 Placed 18 year old applicants from Northern Ireland by POLAR4 quintile: 1 day after A level results day

Placed 18 year old applicants: change relative to 2018 cycle totals

- Quintile 1
- Quintile 2
- Quintile 3
- Quintile 4
- Quintile 5



Note: The percentage change is not plotted in the above chart for groups with fewer than 30 placed applicants in any one cycle.

**P.8 Placed 18 year old applicants from Northern Ireland by POLAR4 quintile: 1 day after A level results day**

Applicant Status	POLAR4	2010	2011	2012	2013	2014	2015	2016	2017	2018	2019
Placed	Quintile 1	520	480	460	510	590	610	620	650	630	600
	Quintile 2	590	520	510	590	580	610	700	700	610	650
	Quintile 3	1,090	1,080	940	1,060	1,180	1,150	1,160	1,250	1,160	1,210
	Quintile 4	1,810	1,900	1,710	1,910	1,820	1,860	1,930	1,800	1,750	1,720
	Quintile 5	3,170	3,170	2,910	3,240	2,900	2,900	2,920	2,850	2,710	2,590

**P.9 Placed 18 year old applicants from Northern Ireland by POLAR4 quintile: 1 day after A level results day**

Placed 18 year old applicants: change relative to 2018 cycle totals

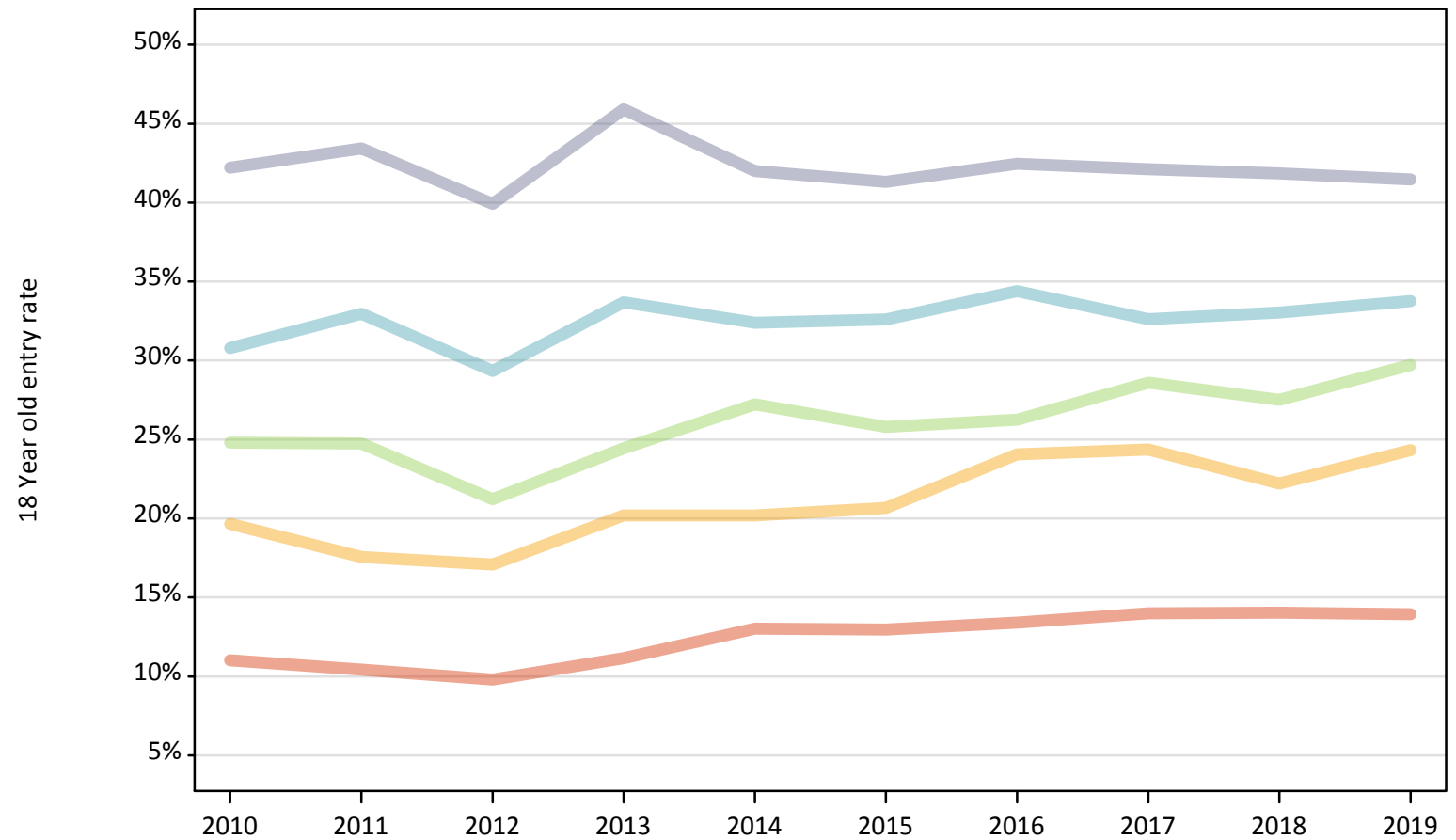
Applicant Status	POLAR4	2010	2011	2012	2013	2014	2015	2016	2017	2018	2019
Placed	Quintile 1	-17%	-23%	-27%	-19%	-6%	-3%	-1%	4%	0%	-4%
	Quintile 2	-3%	-16%	-17%	-4%	-5%	-0%	14%	14%	0%	6%
	Quintile 3	-6%	-7%	-19%	-8%	2%	-0%	0%	8%	0%	4%
	Quintile 4	3%	9%	-2%	9%	4%	7%	11%	3%	0%	-2%
	Quintile 5	17%	17%	7%	19%	7%	7%	8%	5%	0%	-5%

Note: The percentage change is not recorded in the above table for groups with fewer than 10 placed applicants in that cycle or in the 2018 cycle.

### P.10 Placed 18 year old applicants from Northern Ireland by POLAR4 quintile: 1 day after A level results day

Placed 18 year old applicants: entry rate

- Quintile 1
- Quintile 2
- Quintile 3
- Quintile 4
- Quintile 5



**P.11 Placed 18 year old applicants from Northern Ireland by POLAR4 quintile: 1 day after A level results day**

Placed 18 year old applicants: entry rate

Applicant Status	POLAR4	2010	2011	2012	2013	2014	2015	2016	2017	2018	2019
Placed	Quintile 1	11.0%	10.4%	9.8%	11.2%	13.0%	13.0%	13.4%	14.0%	14.0%	13.9%
	Quintile 2	19.6%	17.6%	17.1%	20.2%	20.2%	20.7%	24.1%	24.4%	22.2%	24.3%
	Quintile 3	24.8%	24.7%	21.2%	24.4%	27.2%	25.8%	26.2%	28.6%	27.5%	29.7%
	Quintile 4	30.8%	33.0%	29.3%	33.7%	32.4%	32.6%	34.4%	32.6%	33.0%	33.8%
	Quintile 5	42.2%	43.4%	39.9%	45.9%	42.0%	41.3%	42.5%	42.1%	41.9%	41.5%

**P.12 Placed 18 year old applicants from Northern Ireland by POLAR4 quintile: 1 day after A level results day**

Placed 18 year old applicants: entry rate (indexed to 100 = Quintile 1)

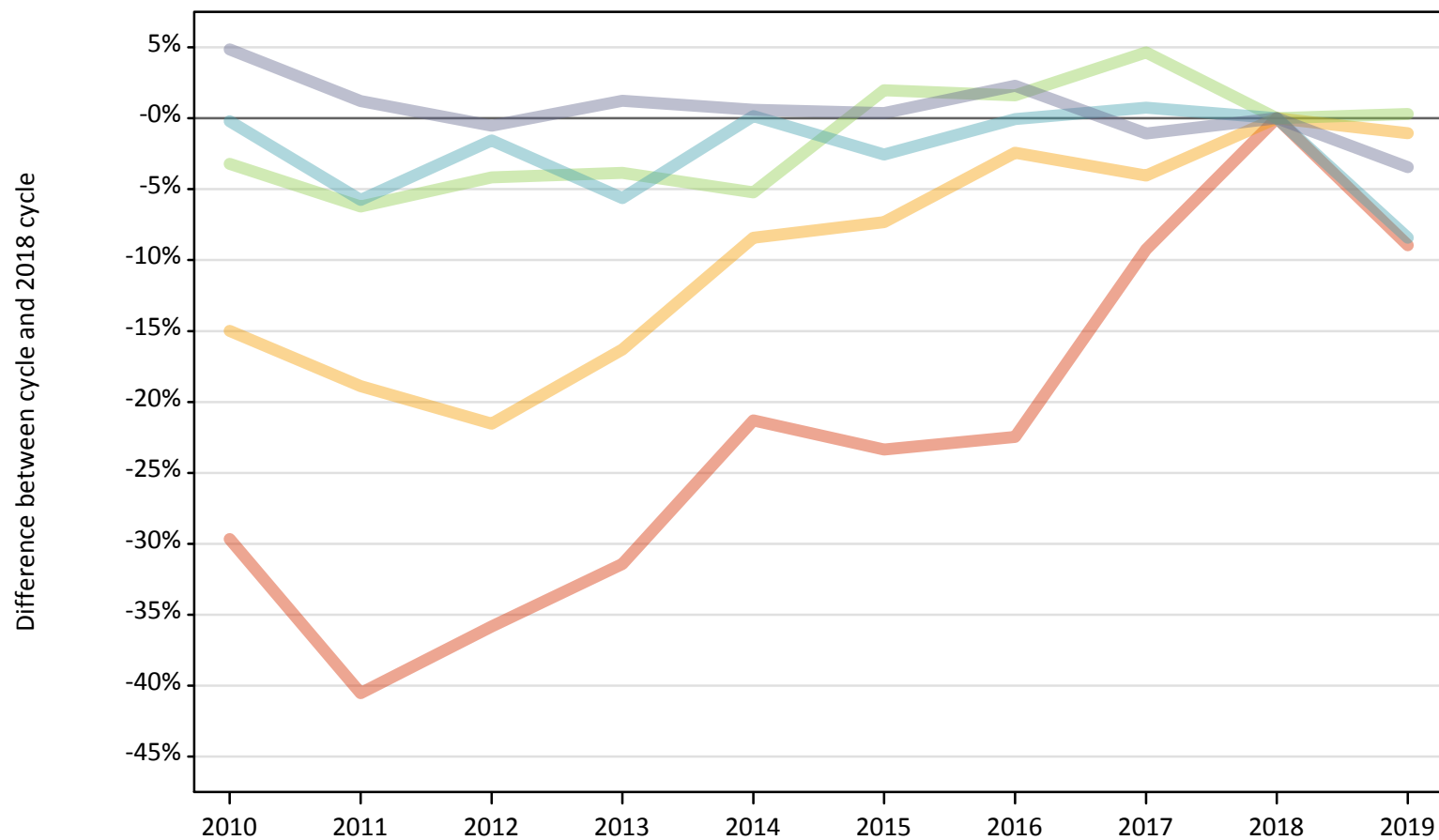
Applicant Status	POLAR4	2010	2011	2012	2013	2014	2015	2016	2017	2018	2019
Placed	Quintile 1	100	100	100	100	100	100	100	100	100	100
	Quintile 2	178	168	174	181	155	159	179	174	158	175
	Quintile 3	225	237	217	219	209	199	196	204	196	213
	Quintile 4	279	316	300	302	249	251	256	233	235	242
	Quintile 5	383	416	408	411	323	319	317	301	298	297



### P.13 Placed 18 year old applicants from Scotland by POLAR4 quintile: 1 day after A level results day

Placed 18 year old applicants: change relative to 2018 cycle totals

- Quintile 1
- Quintile 2
- Quintile 3
- Quintile 4
- Quintile 5



Note: The percentage change is not plotted in the above chart for groups with fewer than 30 placed applicants in any one cycle.

**P.14 Placed 18 year old applicants from Scotland by POLAR4 quintile: 1 day after A level results day**

Applicant Status	POLAR4	2010	2011	2012	2013	2014	2015	2016	2017	2018	2019
Placed	Quintile 1	480	410	440	470	540	520	530	620	680	620
	Quintile 2	1,220	1,160	1,130	1,200	1,310	1,330	1,400	1,380	1,440	1,420
	Quintile 3	2,160	2,100	2,140	2,150	2,120	2,280	2,270	2,340	2,240	2,240
	Quintile 4	3,320	3,130	3,270	3,140	3,330	3,240	3,320	3,350	3,330	3,050
	Quintile 5	7,080	6,830	6,710	6,830	6,790	6,770	6,900	6,670	6,750	6,510

**P.15 Placed 18 year old applicants from Scotland by POLAR4 quintile: 1 day after A level results day**

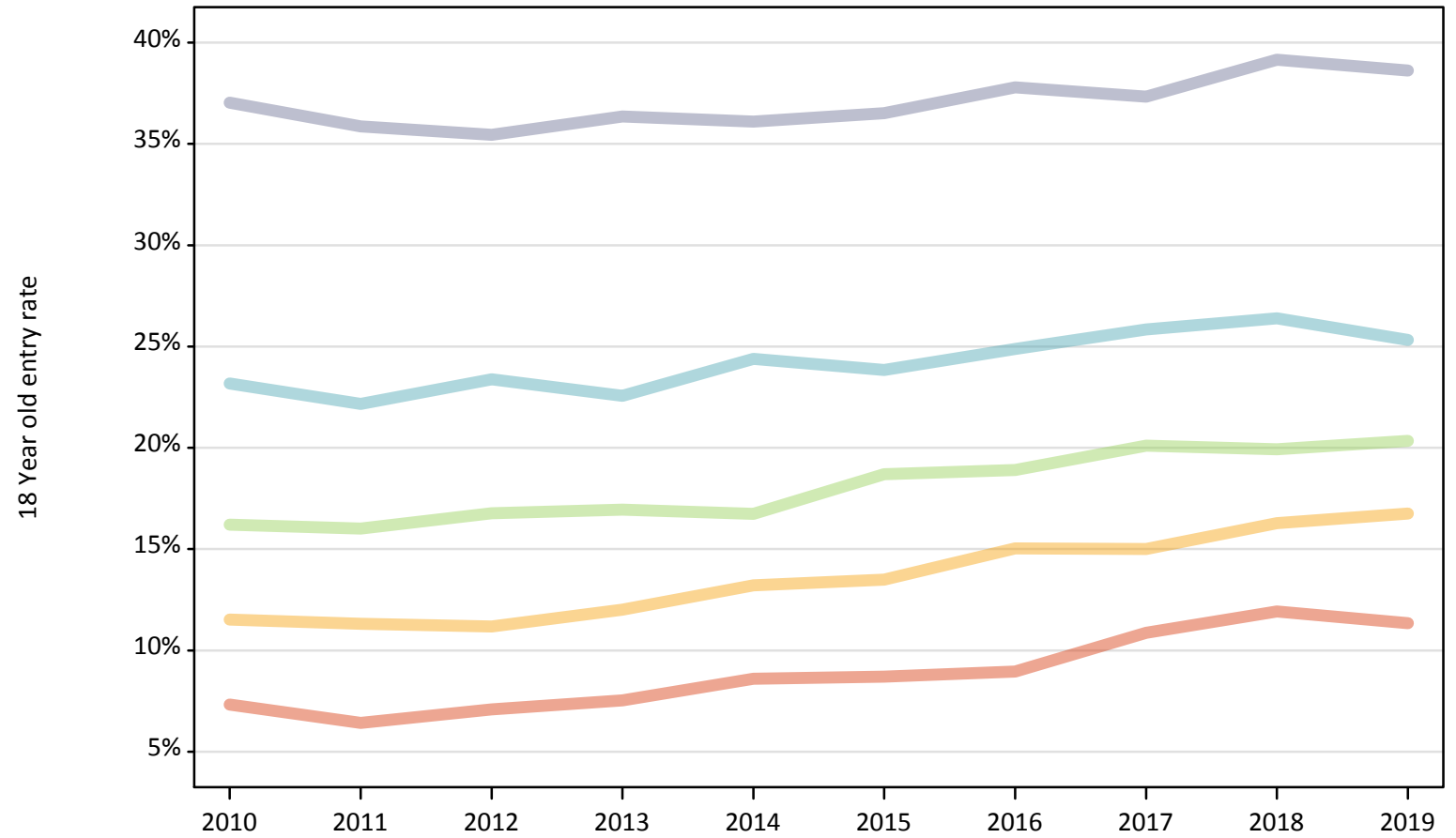
Placed 18 year old applicants: change relative to 2018 cycle totals

Applicant Status	POLAR4	2010	2011	2012	2013	2014	2015	2016	2017	2018	2019
Placed	Quintile 1	-30%	-41%	-36%	-31%	-21%	-23%	-22%	-9%	0%	-9%
	Quintile 2	-15%	-19%	-22%	-16%	-8%	-7%	-2%	-4%	0%	-1%
	Quintile 3	-3%	-6%	-4%	-4%	-5%	2%	2%	5%	0%	0%
	Quintile 4	-0%	-6%	-2%	-6%	0%	-3%	-0%	1%	0%	-8%
	Quintile 5	5%	1%	-1%	1%	1%	0%	2%	-1%	0%	-3%

Note: The percentage change is not recorded in the above table for groups with fewer than 10 placed applicants in that cycle or in the 2018 cycle.

**P.16 Placed 18 year old applicants from Scotland by POLAR4 quintile: 1 day after A level results day**  
Placed 18 year old applicants: entry rate

- Quintile 1
- Quintile 2
- Quintile 3
- Quintile 4
- Quintile 5



**P.17 Placed 18 year old applicants from Scotland by POLAR4 quintile: 1 day after A level results day**

Placed 18 year old applicants: entry rate

Applicant Status	POLAR4	2010	2011	2012	2013	2014	2015	2016	2017	2018	2019
Placed	Quintile 1	7.3%	6.4%	7.1%	7.5%	8.6%	8.7%	9.0%	10.9%	11.9%	11.3%
	Quintile 2	11.5%	11.3%	11.2%	12.0%	13.2%	13.5%	15.0%	15.0%	16.3%	16.8%
	Quintile 3	16.2%	16.0%	16.8%	16.9%	16.7%	18.7%	18.9%	20.1%	19.9%	20.3%
	Quintile 4	23.2%	22.2%	23.4%	22.6%	24.4%	23.8%	24.9%	25.8%	26.4%	25.3%
	Quintile 5	37.0%	35.9%	35.4%	36.4%	36.1%	36.5%	37.8%	37.3%	39.2%	38.6%

**P.18 Placed 18 year old applicants from Scotland by POLAR4 quintile: 1 day after A level results day**

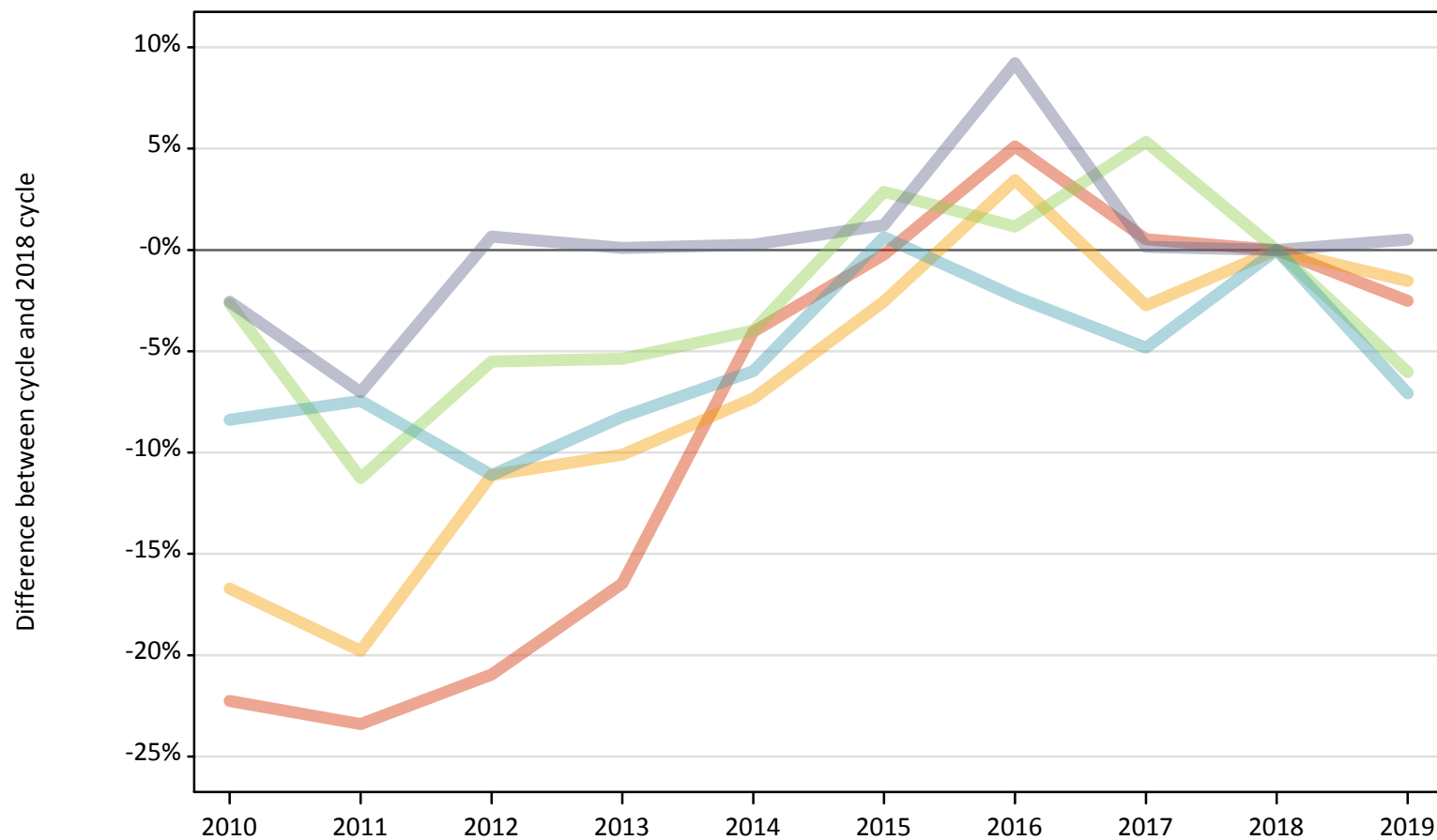
Placed 18 year old applicants: entry rate (indexed to 100 = Quintile 1)

Applicant Status	POLAR4	2010	2011	2012	2013	2014	2015	2016	2017	2018	2019
Placed	Quintile 1	100	100	100	100	100	100	100	100	100	100
	Quintile 2	157	176	158	159	154	155	168	138	137	148
	Quintile 3	221	249	236	225	195	215	211	185	167	179
	Quintile 4	316	345	330	300	283	274	278	238	221	223
	Quintile 5	505	558	500	483	420	420	422	344	328	340

### P.19 Placed 18 year old applicants from Wales by POLAR4 quintile: 1 day after A level results day

Placed 18 year old applicants: change relative to 2018 cycle totals

- Quintile 1
- Quintile 2
- Quintile 3
- Quintile 4
- Quintile 5



Note: The percentage change is not plotted in the above chart for groups with fewer than 30 placed applicants in any one cycle.

**P.20 Placed 18 year old applicants from Wales by POLAR4 quintile: 1 day after A level results day**

Applicant Status	POLAR4	2010	2011	2012	2013	2014	2015	2016	2017	2018	2019
Placed	Quintile 1	1,020	1,010	1,040	1,100	1,260	1,310	1,380	1,320	1,310	1,280
	Quintile 2	1,740	1,680	1,860	1,880	1,940	2,040	2,160	2,030	2,090	2,060
	Quintile 3	2,100	1,920	2,040	2,040	2,070	2,220	2,180	2,270	2,160	2,030
	Quintile 4	1,750	1,770	1,700	1,750	1,790	1,920	1,860	1,820	1,910	1,770
	Quintile 5	1,900	1,820	1,970	1,960	1,960	1,980	2,130	1,960	1,950	1,960

**P.21 Placed 18 year old applicants from Wales by POLAR4 quintile: 1 day after A level results day**

Placed 18 year old applicants: change relative to 2018 cycle totals

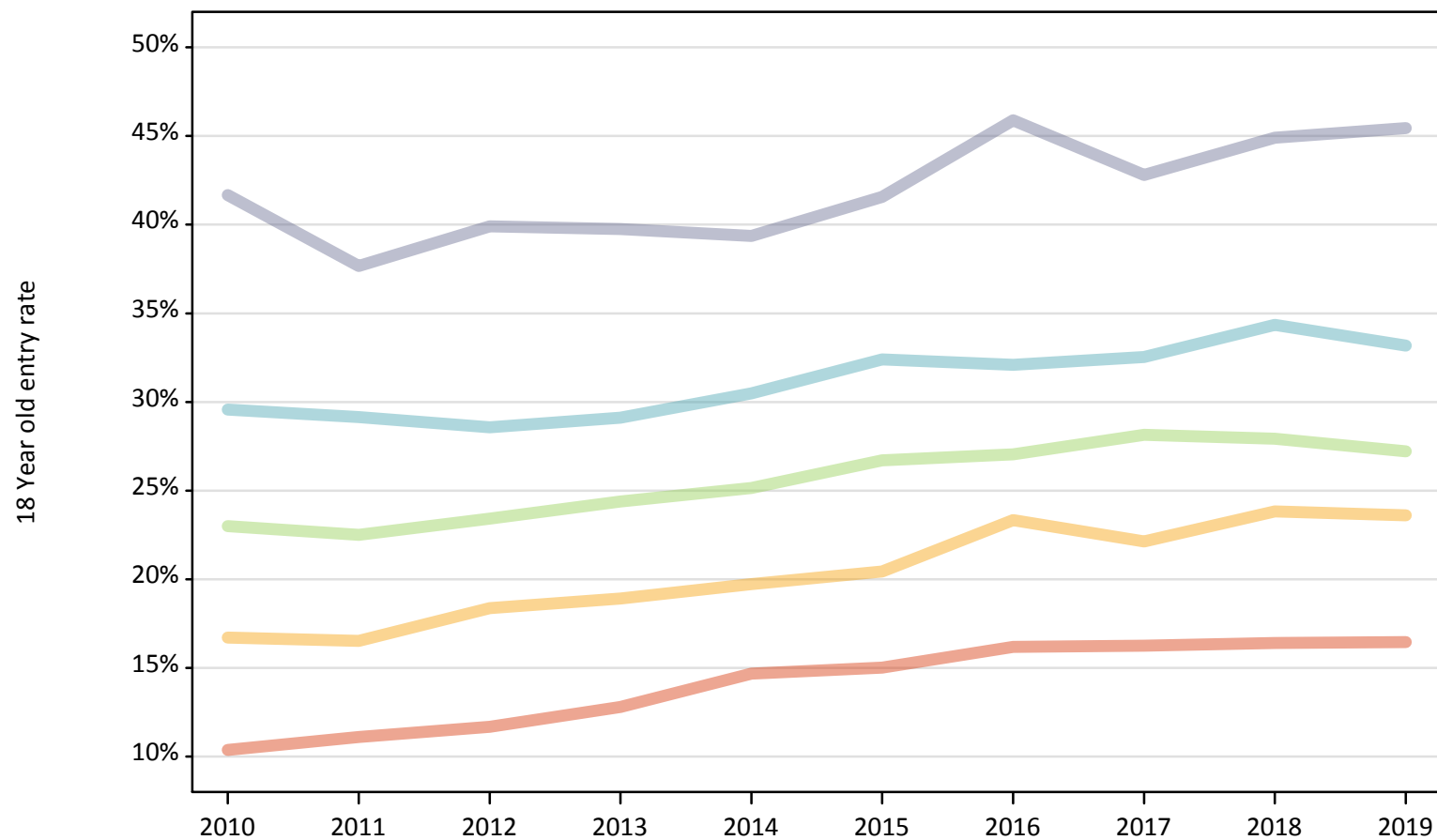
Applicant Status	POLAR4	2010	2011	2012	2013	2014	2015	2016	2017	2018	2019
Placed	Quintile 1	-22%	-23%	-21%	-16%	-4%	-0%	5%	1%	0%	-3%
	Quintile 2	-17%	-20%	-11%	-10%	-7%	-3%	3%	-3%	0%	-2%
	Quintile 3	-3%	-11%	-6%	-5%	-4%	3%	1%	5%	0%	-6%
	Quintile 4	-8%	-7%	-11%	-8%	-6%	1%	-2%	-5%	0%	-7%
	Quintile 5	-3%	-7%	1%	0%	0%	1%	9%	0%	0%	1%

Note: The percentage change is not recorded in the above table for groups with fewer than 10 placed applicants in that cycle or in the 2018 cycle.

## P.22 Placed 18 year old applicants from Wales by POLAR4 quintile: 1 day after A level results day

Placed 18 year old applicants: entry rate

- Quintile 1
- Quintile 2
- Quintile 3
- Quintile 4
- Quintile 5



**P.23 Placed 18 year old applicants from Wales by POLAR4 quintile: 1 day after A level results day**

Placed 18 year old applicants: entry rate

Applicant Status	POLAR4	2010	2011	2012	2013	2014	2015	2016	2017	2018	2019
Placed	Quintile 1	10.4%	11.1%	11.7%	12.8%	14.7%	15.0%	16.2%	16.3%	16.4%	16.5%
	Quintile 2	16.7%	16.5%	18.4%	18.9%	19.7%	20.4%	23.3%	22.1%	23.8%	23.6%
	Quintile 3	23.0%	22.5%	23.4%	24.4%	25.1%	26.7%	27.0%	28.1%	27.9%	27.2%
	Quintile 4	29.6%	29.1%	28.6%	29.1%	30.5%	32.4%	32.1%	32.5%	34.4%	33.2%
	Quintile 5	41.7%	37.7%	39.9%	39.8%	39.4%	41.6%	45.9%	42.8%	44.9%	45.5%

**P.24 Placed 18 year old applicants from Wales by POLAR4 quintile: 1 day after A level results day**

Placed 18 year old applicants: entry rate (indexed to 100 = Quintile 1)

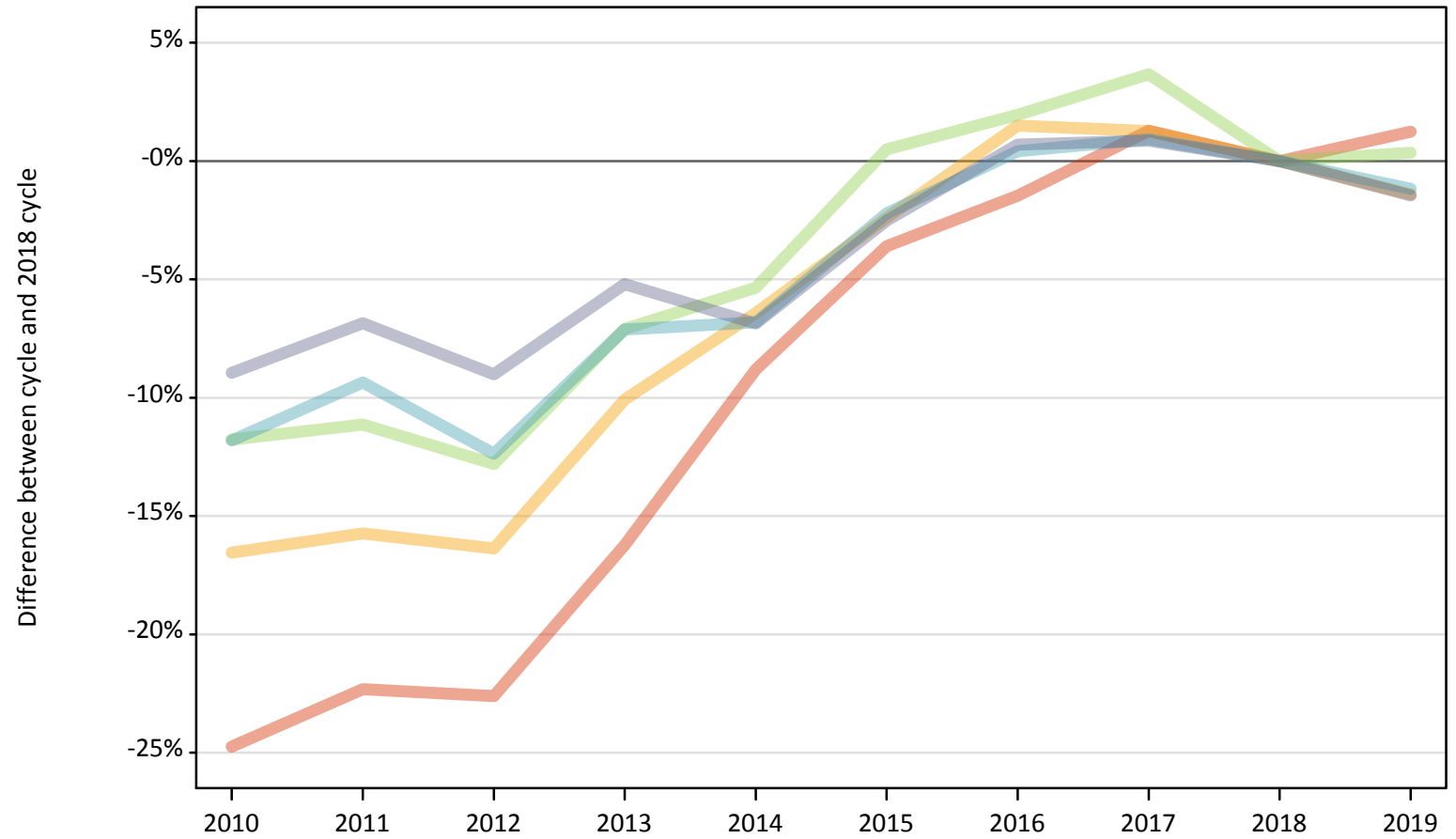
Applicant Status	POLAR4	2010	2011	2012	2013	2014	2015	2016	2017	2018	2019
Placed	Quintile 1	100	100	100	100	100	100	100	100	100	100
	Quintile 2	161	149	157	148	134	136	144	136	145	143
	Quintile 3	222	203	201	191	171	178	167	173	170	165
	Quintile 4	285	263	245	228	208	216	198	200	209	202
	Quintile 5	402	339	342	311	268	277	283	263	274	276



### P.25 Placed 18 year old applicants from the UK by POLAR4 quintile: 1 day after A level results day

Placed 18 year old applicants: change relative to 2018 cycle totals

- Quintile 1
- Quintile 2
- Quintile 3
- Quintile 4
- Quintile 5



Note: The percentage change is not plotted in the above chart for groups with fewer than 30 placed applicants in any one cycle.

**P.26 Placed 18 year old applicants from the UK by POLAR4 quintile: 1 day after A level results day**

Applicant Status	POLAR4	2010	2011	2012	2013	2014	2015	2016	2017	2018	2019
Placed	Quintile 1	16,810	17,350	17,280	18,710	20,370	21,530	22,010	22,620	22,330	22,610
	Quintile 2	26,330	26,580	26,390	28,370	29,520	30,790	32,020	31,950	31,550	31,100
	Quintile 3	34,160	34,400	33,760	35,970	36,650	38,910	39,470	40,140	38,720	38,850
	Quintile 4	42,500	43,680	42,230	44,760	44,900	47,120	48,390	48,630	48,190	47,620
	Quintile 5	64,130	65,610	64,090	66,780	65,600	68,660	70,930	71,040	70,440	69,410

**P.27 Placed 18 year old applicants from the UK by POLAR4 quintile: 1 day after A level results day**

Placed 18 year old applicants: change relative to 2018 cycle totals

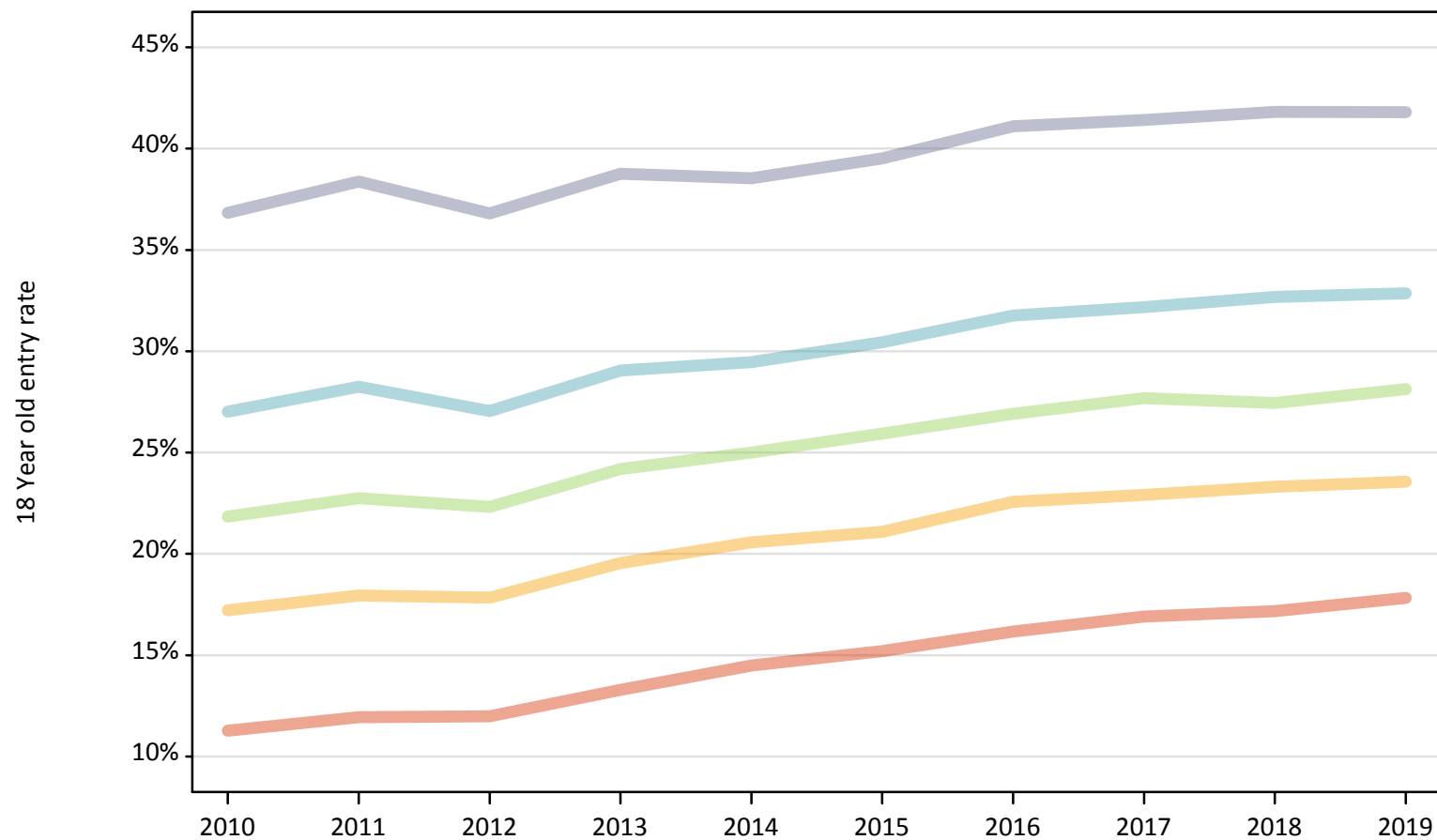
Applicant Status	POLAR4	2010	2011	2012	2013	2014	2015	2016	2017	2018	2019
Placed	Quintile 1	-25%	-22%	-23%	-16%	-9%	-4%	-1%	1%	0%	1%
	Quintile 2	-17%	-16%	-16%	-10%	-6%	-2%	1%	1%	0%	-1%
	Quintile 3	-12%	-11%	-13%	-7%	-5%	0%	2%	4%	0%	0%
	Quintile 4	-12%	-9%	-12%	-7%	-7%	-2%	0%	1%	0%	-1%
	Quintile 5	-9%	-7%	-9%	-5%	-7%	-3%	1%	1%	0%	-1%

Note: The percentage change is not recorded in the above table for groups with fewer than 10 placed applicants in that cycle or in the 2018 cycle.

## P.28 Placed 18 year old applicants from the UK by POLAR4 quintile: 1 day after A level results day

Placed 18 year old applicants: entry rate

- Quintile 1
- Quintile 2
- Quintile 3
- Quintile 4
- Quintile 5



**P.29 Placed 18 year old applicants from the UK by POLAR4 quintile: 1 day after A level results day**

Placed 18 year old applicants: entry rate

Applicant Status	POLAR4	2010	2011	2012	2013	2014	2015	2016	2017	2018	2019
Placed	Quintile 1	11.3%	11.9%	12.0%	13.3%	14.5%	15.2%	16.2%	16.9%	17.2%	17.8%
	Quintile 2	17.2%	18.0%	17.8%	19.5%	20.6%	21.1%	22.6%	22.9%	23.3%	23.6%
	Quintile 3	21.9%	22.8%	22.3%	24.2%	25.0%	25.9%	26.9%	27.7%	27.4%	28.1%
	Quintile 4	27.0%	28.3%	27.1%	29.1%	29.5%	30.4%	31.8%	32.2%	32.7%	32.9%
	Quintile 5	36.8%	38.4%	36.8%	38.8%	38.5%	39.5%	41.1%	41.4%	41.8%	41.8%

**P.30 Placed 18 year old applicants from the UK by POLAR4 quintile: 1 day after A level results day**

Placed 18 year old applicants: entry rate (indexed to 100 = Quintile 1)

Applicant Status	POLAR4	2010	2011	2012	2013	2014	2015	2016	2017	2018	2019
Placed	Quintile 1	100	100	100	100	100	100	100	100	100	100
	Quintile 2	153	150	149	147	142	139	140	136	136	132
	Quintile 3	194	190	186	182	173	171	166	164	160	158
	Quintile 4	239	236	226	219	203	200	196	190	190	184
	Quintile 5	327	321	307	292	266	260	254	245	243	234