

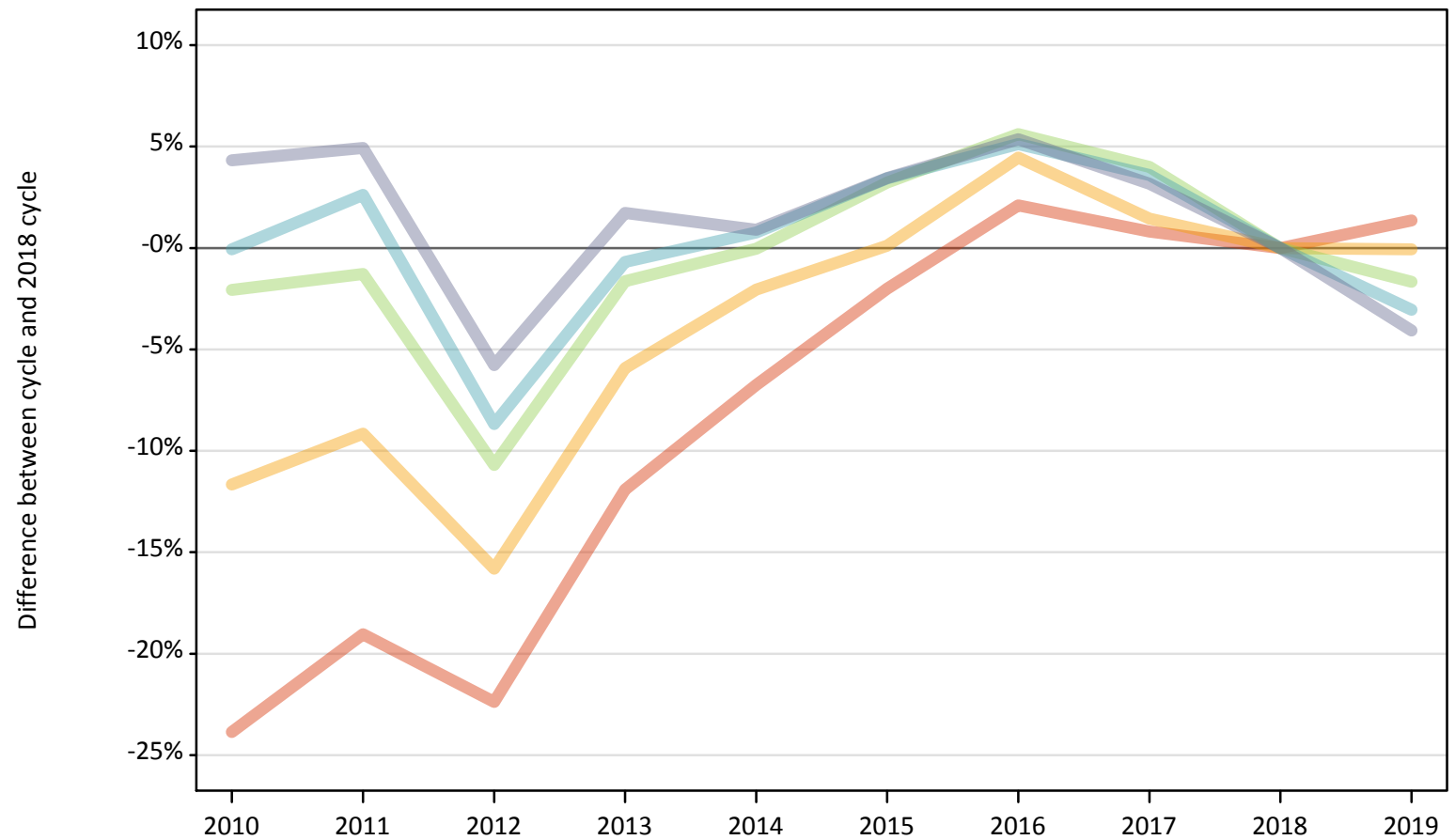
Daily Clearing Analysis: IMD2015

Analysis at 00:05 on Friday 16 August 2019 (1 day after A level results day)

J.1 Placed applicants from England by IMD2015 quintile: 1 day after A level results day

Placed applicants: change relative to 2018 cycle totals

- Quintile 1
- Quintile 2
- Quintile 3
- Quintile 4
- Quintile 5



Note: The percentage change is not plotted in the above chart for groups with fewer than 30 placed applicants in any one cycle.

J.2 Placed applicants from England by IMD2015 quintile: 1 day after A level results day

Applicant Status	IMD2015	2010	2011	2012	2013	2014	2015	2016	2017	2018	2019
Placed	Quintile 1	42,290	44,970	43,120	48,930	51,800	54,430	56,710	55,990	55,540	56,300
	Quintile 2	48,590	49,970	46,310	51,740	53,870	55,060	57,450	55,800	55,000	54,970
	Quintile 3	56,400	56,850	51,430	56,640	57,570	59,450	60,820	59,890	57,590	56,630
	Quintile 4	64,010	65,730	58,480	63,600	64,530	66,250	67,330	66,350	64,050	62,090
	Quintile 5	79,320	79,780	71,640	77,350	76,720	78,660	80,100	78,440	76,030	72,930

J.3 Placed applicants from England by IMD2015 quintile: 1 day after A level results day

Placed applicants: change relative to 2018 cycle totals

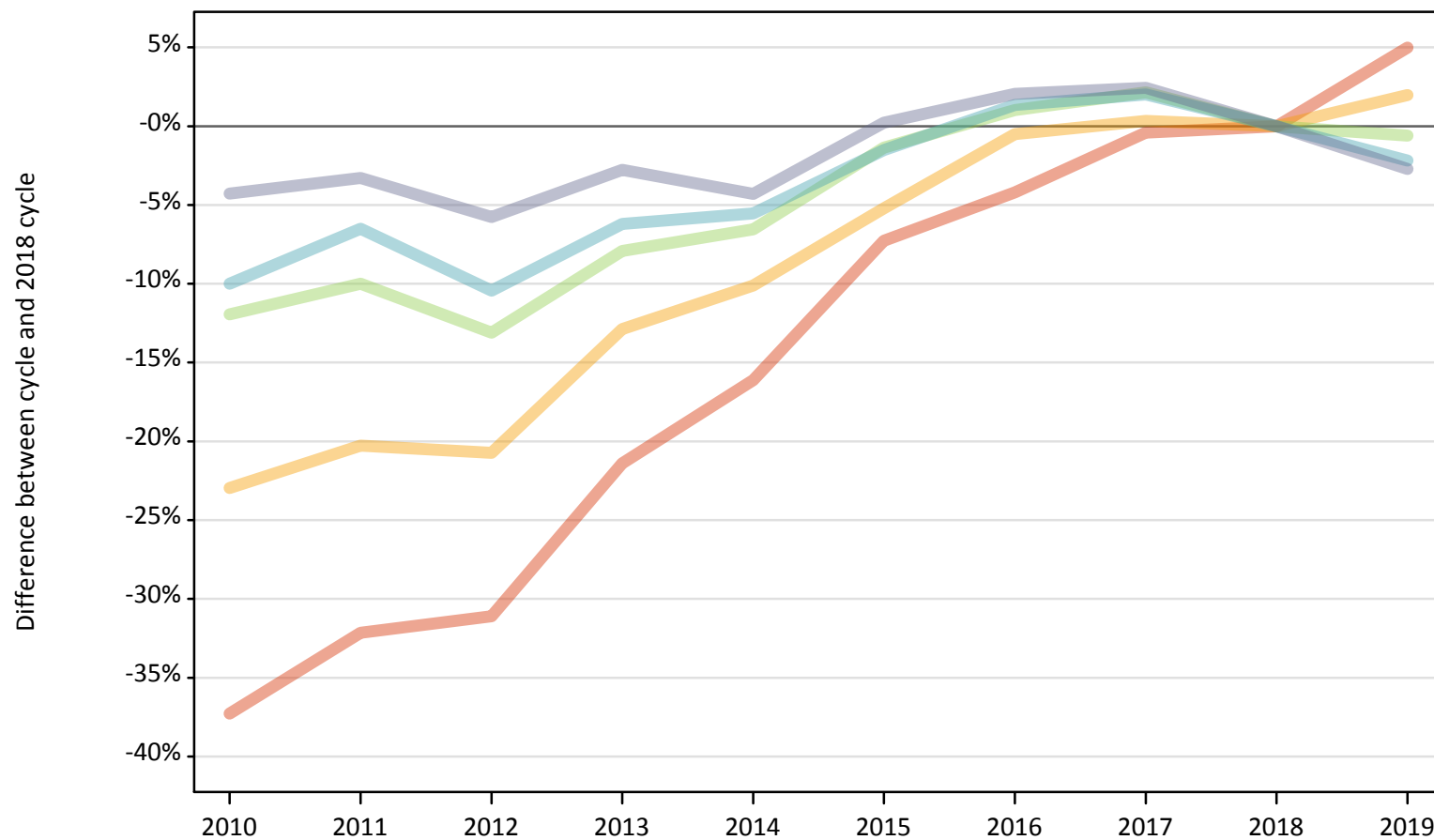
Applicant Status	IMD2015	2010	2011	2012	2013	2014	2015	2016	2017	2018	2019
Placed	Quintile 1	-24%	-19%	-22%	-12%	-7%	-2%	2%	1%	0%	1%
	Quintile 2	-12%	-9%	-16%	-6%	-2%	0%	4%	1%	0%	-0%
	Quintile 3	-2%	-1%	-11%	-2%	-0%	3%	6%	4%	0%	-2%
	Quintile 4	-0%	3%	-9%	-1%	1%	3%	5%	4%	0%	-3%
	Quintile 5	4%	5%	-6%	2%	1%	3%	5%	3%	0%	-4%

Note: The percentage change is not recorded in the above table for groups with fewer than 10 placed applicants in that cycle or in the 2018 cycle.

J.4 Placed 18 year old applicants from England by IMD2015 quintile: 1 day after A level results day

Placed 18 year old applicants: change relative to 2018 cycle totals

- Quintile 1
- Quintile 2
- Quintile 3
- Quintile 4
- Quintile 5



Note: The percentage change is not plotted in the above chart for groups with fewer than 30 placed applicants in any one cycle.

J.5 Placed 18 year old applicants from England by IMD2015 quintile: 1 day after A level results day

Applicant Status IMD2015		2010	2011	2012	2013	2014	2015	2016	2017	2018	2019
Placed	Quintile 1	16,650	18,010	18,280	20,860	22,260	24,610	25,420	26,420	26,540	27,860
	Quintile 2	22,190	22,960	22,830	25,090	25,890	27,300	28,660	28,890	28,800	29,370
	Quintile 3	29,500	30,150	29,120	30,850	31,320	33,050	33,850	34,230	33,510	33,310
	Quintile 4	36,250	37,650	36,070	37,770	38,050	39,660	40,810	41,080	40,270	39,390
	Quintile 5	49,430	49,950	48,670	50,210	49,430	51,760	52,700	52,900	51,640	50,240

J.6 Placed 18 year old applicants from England by IMD2015 quintile: 1 day after A level results day

Placed 18 year old applicants: change relative to 2018 cycle totals

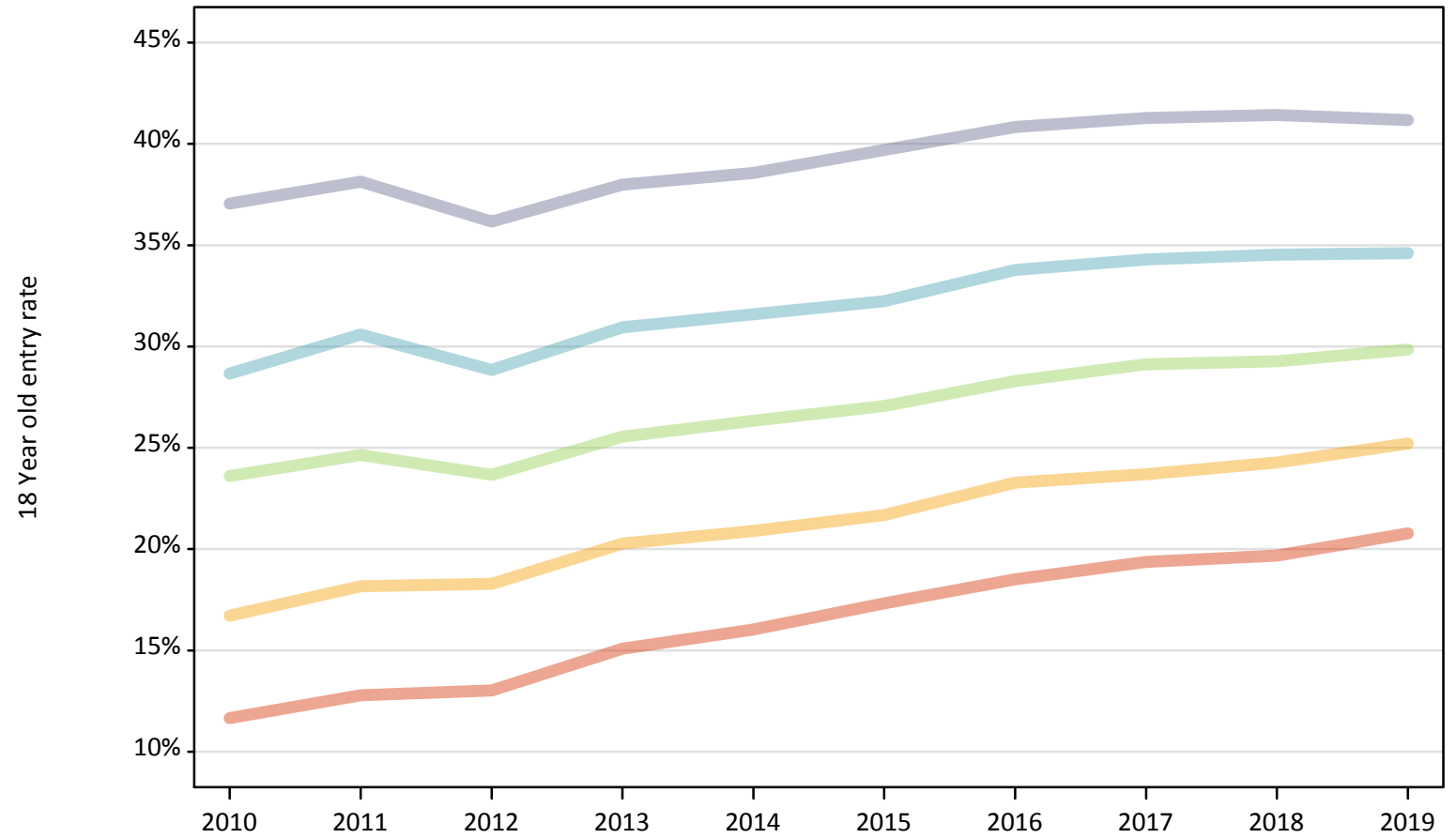
Applicant Status IMD2015		2010	2011	2012	2013	2014	2015	2016	2017	2018	2019
Placed	Quintile 1	-37%	-32%	-31%	-21%	-16%	-7%	-4%	-0%	0%	5%
	Quintile 2	-23%	-20%	-21%	-13%	-10%	-5%	-1%	0%	0%	2%
	Quintile 3	-12%	-10%	-13%	-8%	-7%	-1%	1%	2%	0%	-1%
	Quintile 4	-10%	-7%	-10%	-6%	-6%	-2%	1%	2%	0%	-2%
	Quintile 5	-4%	-3%	-6%	-3%	-4%	0%	2%	2%	0%	-3%

Note: The percentage change is not recorded in the above table for groups with fewer than 10 placed applicants in that cycle or in the 2018 cycle.

J.7 Placed 18 year old applicants from England by IMD2015 quintile: 1 day after A level results day

Placed 18 year old applicants: entry rate

- Quintile 1
- Quintile 2
- Quintile 3
- Quintile 4
- Quintile 5



J.8 Placed 18 year old applicants from England by IMD2015 quintile: 1 day after A level results day

Placed 18 year old applicants: entry rate

Applicant Status	IMD2015	2010	2011	2012	2013	2014	2015	2016	2017	2018	2019
Placed	Quintile 1	11.7%	12.8%	13.0%	15.1%	16.0%	17.3%	18.5%	19.4%	19.7%	20.8%
	Quintile 2	16.7%	18.2%	18.3%	20.3%	20.9%	21.7%	23.3%	23.7%	24.3%	25.2%
	Quintile 3	23.6%	24.6%	23.7%	25.6%	26.3%	27.1%	28.3%	29.1%	29.3%	29.9%
	Quintile 4	28.7%	30.6%	28.8%	30.9%	31.6%	32.2%	33.8%	34.3%	34.5%	34.6%
	Quintile 5	37.1%	38.1%	36.2%	38.0%	38.6%	39.7%	40.8%	41.3%	41.4%	41.2%

J.9 Placed 18 year old applicants from England by IMD2015 quintile: 1 day after A level results day

Placed 18 year old applicants: entry rate (indexed to 100 = Quintile 1)

Applicant Status	IMD2015	2010	2011	2012	2013	2014	2015	2016	2017	2018	2019
Placed	Quintile 1	100	100	100	100	100	100	100	100	100	100
	Quintile 2	143	142	140	134	130	125	126	122	123	121
	Quintile 3	202	193	182	169	164	156	153	150	149	144
	Quintile 4	246	239	222	205	197	186	183	177	175	167
	Quintile 5	318	298	278	252	240	229	221	213	211	198