

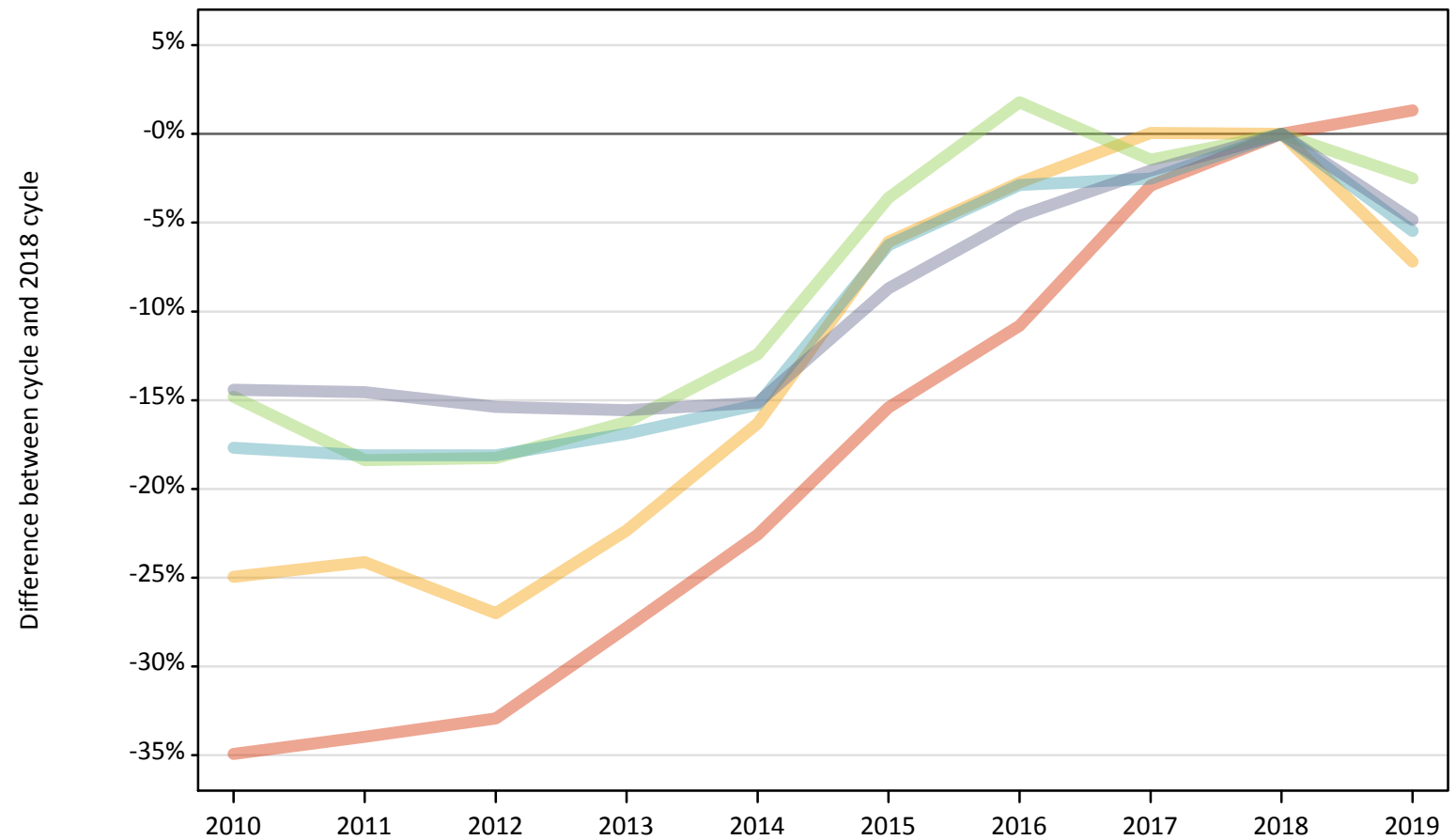
Daily Clearing Analysis: SIMD2012 2016

Analysis at 00:05 on Friday 16 August 2019 (1 day after A level results day)

J.1 Placed applicants from Scotland by SIMD2012/2016 quintile: 1 day after A level results day

Placed applicants: change relative to 2018 cycle totals

- Quintile 1
- Quintile 2
- Quintile 3
- Quintile 4
- Quintile 5



Note: The percentage change is not plotted in the above chart for groups with fewer than 30 placed applicants in any one cycle.

J.2 Placed applicants from Scotland by SIMD2012/2016 quintile: 1 day after A level results day

Applicant Status	SIMD2012/2016	2010	2011	2012	2013	2014	2015	2016	2017	2018	2019
Placed	Quintile 1	3,160	3,200	3,250	3,500	3,760	4,100	4,330	4,710	4,850	4,920
	Quintile 2	3,880	3,920	3,770	4,010	4,330	4,860	5,030	5,170	5,170	4,800
	Quintile 3	5,160	4,940	4,950	5,070	5,300	5,840	6,160	5,970	6,050	5,900
	Quintile 4	6,220	6,190	6,190	6,280	6,410	7,090	7,340	7,370	7,560	7,150
	Quintile 5	8,290	8,270	8,190	8,180	8,220	8,840	9,240	9,480	9,680	9,210

J.3 Placed applicants from Scotland by SIMD2012/2016 quintile: 1 day after A level results day

Placed applicants: change relative to 2018 cycle totals

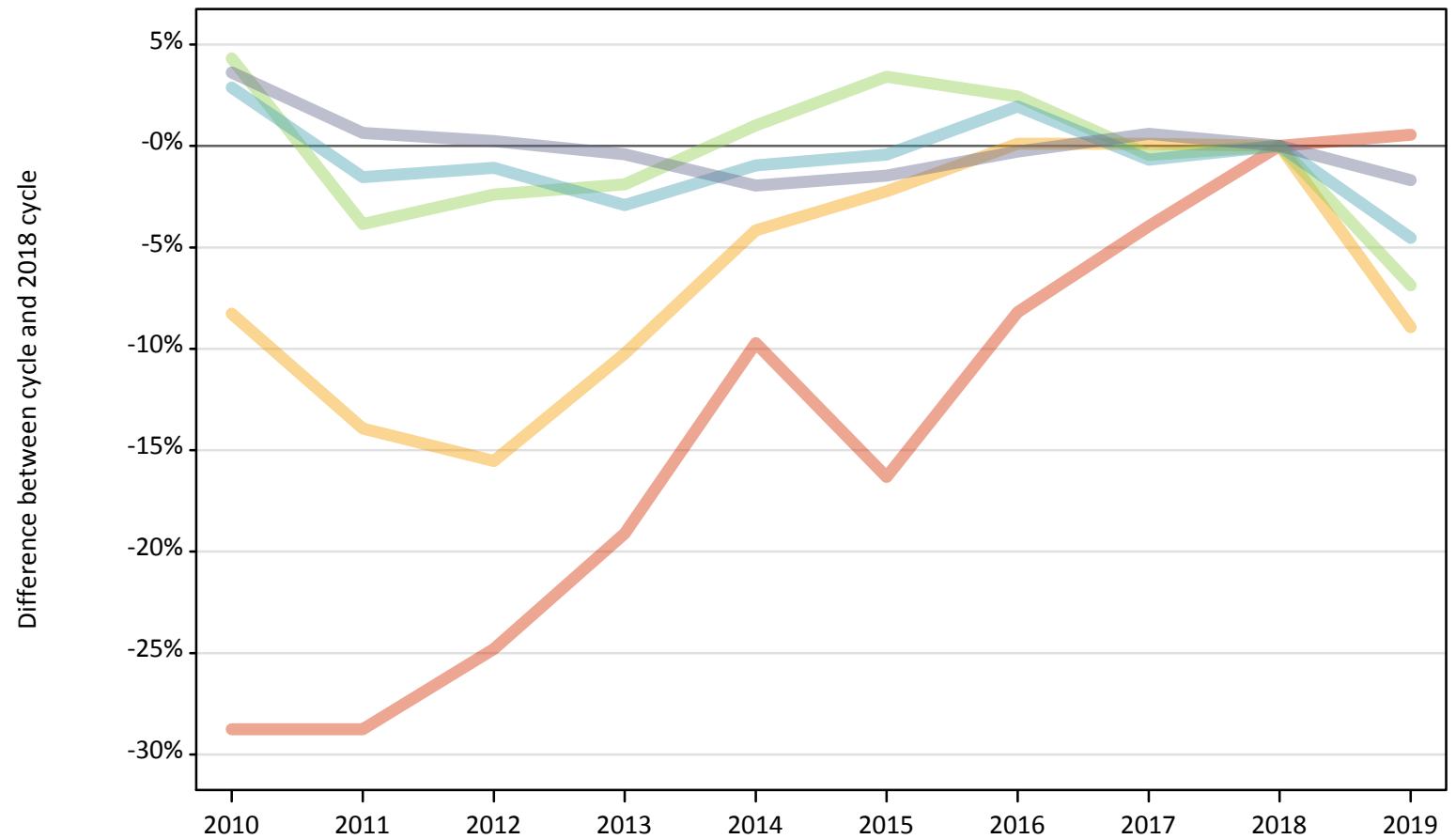
Applicant Status	SIMD2012/2016	2010	2011	2012	2013	2014	2015	2016	2017	2018	2019
Placed	Quintile 1	-35%	-34%	-33%	-28%	-23%	-15%	-11%	-3%	0%	1%
	Quintile 2	-25%	-24%	-27%	-22%	-16%	-6%	-3%	0%	0%	-7%
	Quintile 3	-15%	-18%	-18%	-16%	-12%	-4%	2%	-1%	0%	-2%
	Quintile 4	-18%	-18%	-18%	-17%	-15%	-6%	-3%	-3%	0%	-5%
	Quintile 5	-14%	-15%	-15%	-16%	-15%	-9%	-5%	-2%	0%	-5%

Note: The percentage change is not recorded in the above table for groups with fewer than 10 placed applicants in that cycle or in the 2018 cycle.

J.4 Placed 18 year old applicants from Scotland by SIMD2012/2016 quintile: 1 day after A level results day

Placed 18 year old applicants: change relative to 2018 cycle totals

- Quintile 1
- Quintile 2
- Quintile 3
- Quintile 4
- Quintile 5



Note: The percentage change is not plotted in the above chart for groups with fewer than 30 placed applicants in any one cycle.

J.5 Placed 18 year old applicants from Scotland by SIMD2012/2016 quintile: 1 day after A level results day

Applicant Status	SIMD2012/2016	2010	2011	2012	2013	2014	2015	2016	2017	2018	2019
Placed	Quintile 1	1,030	1,030	1,080	1,170	1,300	1,210	1,320	1,380	1,440	1,450
	Quintile 2	1,770	1,660	1,630	1,730	1,850	1,880	1,930	1,930	1,930	1,750
	Quintile 3	2,660	2,450	2,490	2,500	2,570	2,640	2,610	2,540	2,550	2,370
	Quintile 4	3,630	3,480	3,490	3,430	3,500	3,520	3,600	3,510	3,530	3,370
	Quintile 5	5,170	5,020	5,000	4,970	4,890	4,910	4,970	5,020	4,990	4,900

J.6 Placed 18 year old applicants from Scotland by SIMD2012/2016 quintile: 1 day after A level results day

Placed 18 year old applicants: change relative to 2018 cycle totals

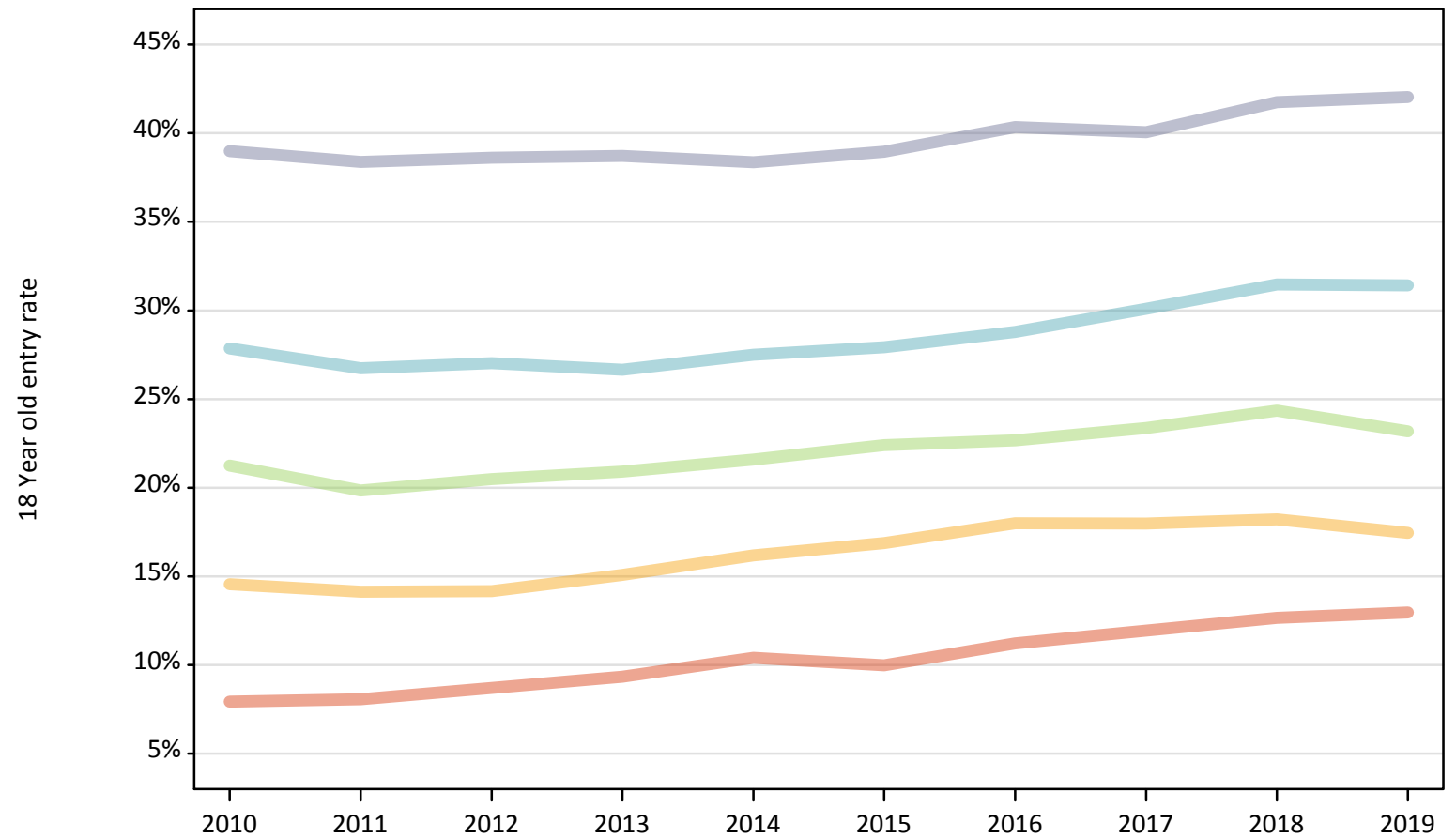
Applicant Status	SIMD2012/2016	2010	2011	2012	2013	2014	2015	2016	2017	2018	2019
Placed	Quintile 1	-29%	-29%	-25%	-19%	-10%	-16%	-8%	-4%	0%	1%
	Quintile 2	-8%	-14%	-16%	-10%	-4%	-2%	0%	0%	0%	-9%
	Quintile 3	4%	-4%	-2%	-2%	1%	3%	2%	-0%	0%	-7%
	Quintile 4	3%	-2%	-1%	-3%	-1%	-0%	2%	-1%	0%	-5%
	Quintile 5	4%	1%	0%	-0%	-2%	-1%	-0%	1%	0%	-2%

Note: The percentage change is not recorded in the above table for groups with fewer than 10 placed applicants in that cycle or in the 2018 cycle.

J.7 Placed 18 year old applicants from Scotland by SIMD2012/2016 quintile: 1 day after A level results day

Placed 18 year old applicants: entry rate

- Quintile 1
- Quintile 2
- Quintile 3
- Quintile 4
- Quintile 5



J.8 Placed 18 year old applicants from Scotland by SIMD2012/2016 quintile: 1 day after A level results day

Placed 18 year old applicants: entry rate

Applicant Status	SIMD2012/2016	2010	2011	2012	2013	2014	2015	2016	2017	2018	2019
Placed	Quintile 1	7.9%	8.1%	8.7%	9.3%	10.4%	10.0%	11.2%	11.9%	12.7%	13.0%
	Quintile 2	14.6%	14.1%	14.2%	15.1%	16.2%	16.9%	18.0%	18.0%	18.2%	17.5%
	Quintile 3	21.3%	19.9%	20.5%	20.9%	21.6%	22.4%	22.7%	23.4%	24.4%	23.2%
	Quintile 4	27.9%	26.7%	27.0%	26.7%	27.5%	27.9%	28.8%	30.1%	31.5%	31.4%
	Quintile 5	39.0%	38.4%	38.6%	38.7%	38.4%	39.0%	40.4%	40.1%	41.8%	42.0%

J.9 Placed 18 year old applicants from Scotland by SIMD2012/2016 quintile: 1 day after A level results day

Placed 18 year old applicants: entry rate (indexed to 100 = Quintile 1)

Applicant Status	SIMD2012/2016	2010	2011	2012	2013	2014	2015	2016	2017	2018	2019
Placed	Quintile 1	100	100	100	100	100	100	100	100	100	100
	Quintile 2	184	175	163	162	155	169	160	151	144	135
	Quintile 3	268	246	236	224	207	224	202	196	192	179
	Quintile 4	351	331	311	286	264	280	257	252	249	242
	Quintile 5	492	476	444	415	369	390	360	336	330	324