

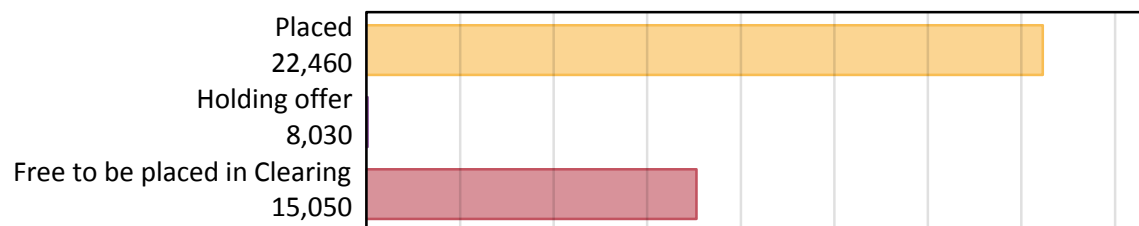
Daily Clearing Analysis: Overview

B7 Nursing analysis at 00:05 on Friday 16 August 2019 (1 day after A level results day)

AB.1 Placed applicants to nursing from all domiciles, 2019 cycle

Applicant type	Status	2019
Main scheme	Placed (Clearing)	360
	Placed (Adjustment)	0
	Placed (Firm)	20,500
	Placed (Insurance)	440
	Placed (Other)	1,040
	Holding offer	8,030
	Free to be placed in Clearing	15,050
Direct to Clearing	Placed (Direct to Clearing)	120
	Other (Direct to Clearing)	390
All applicants	Placed	22,460

AB.2 Summary of nursing applicants who are placed, holding offers or free to be placed in Clearing (all domiciles)



AB.3 Placed applicants to nursing from all domiciles: 1 day after A level results day

Placed applicants to nursing: difference between cycle and 2018 cycle



Note: The percentage change is not plotted in the above chart for groups with fewer than 30 placed applicants in any one cycle.

AB.4 Placed applicants to nursing from all domiciles: 1 day after A level results day

Placed applicants to nursing: applicants at 1 day after A level results day

Applicant type	Status	2010	2011	2012	2013	2014	2015	2016	2017	2018	2019
All applicants	Placed	21,830	18,820	18,600	19,280	21,460	21,320	23,310	22,110	21,570	22,460

AB.5 Placed applicants to nursing from all domiciles: 1 day after A level results day

Placed applicants to nursing: difference between cycle and 2018 cycle

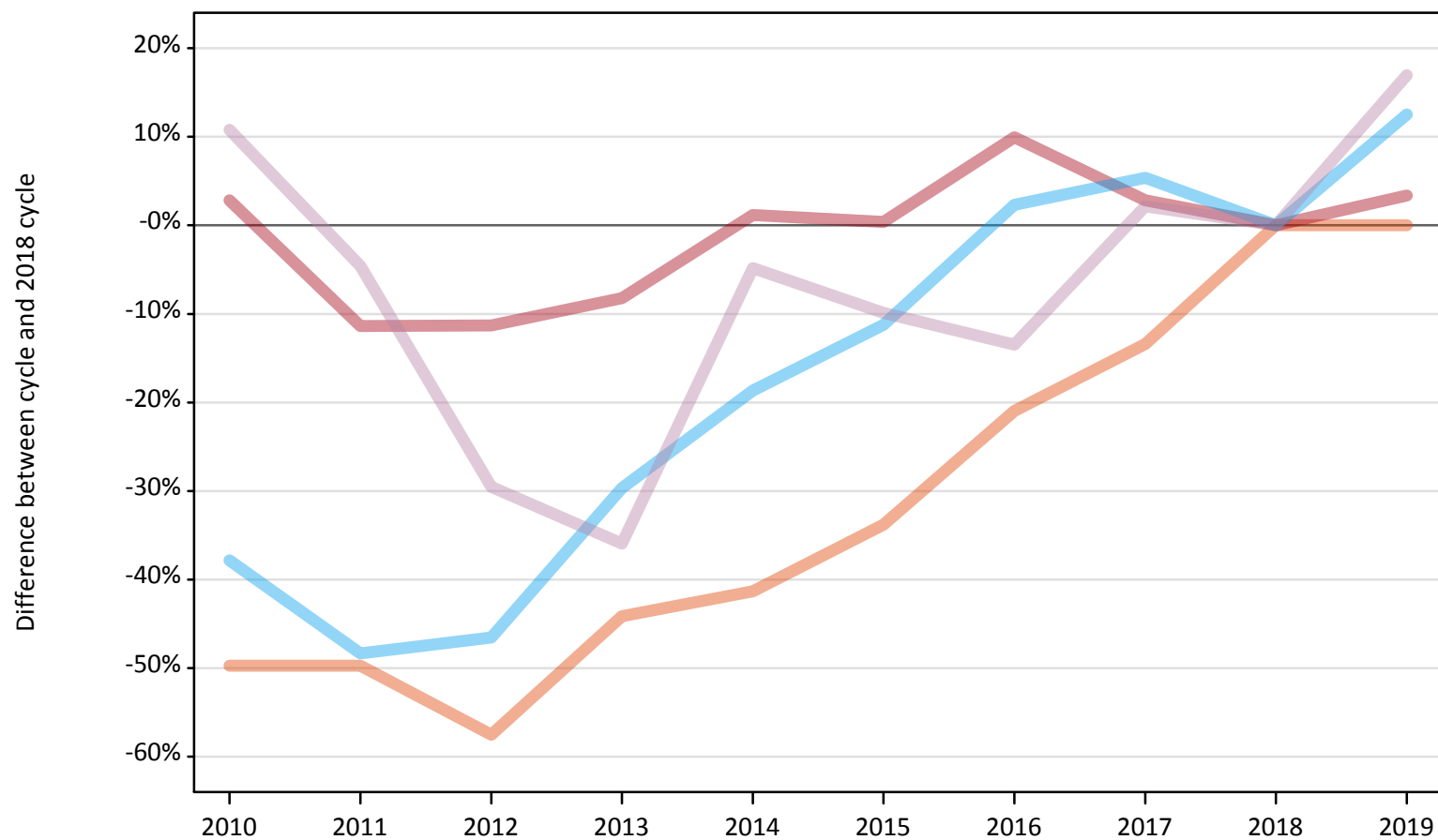
Applicant type	Status	2010	2011	2012	2013	2014	2015	2016	2017	2018	2019
All applicants	Placed	1%	-13%	-14%	-11%	-1%	-1%	8%	2%	0%	4%

Note: The percentage change is not recorded in the above table for groups with fewer than 10 placed applicants in that cycle or in the 2018 cycle.

AB.6 Placed main scheme applicants to nursing from all domiciles: 1 day after A level results day

All Main scheme placed routes (excluding Adjustment): difference between cycle and 2018 cycle

- Placed (Clearing)
- Placed (Firm)
- Placed (Insurance)
- Placed (Other)



Note: The percentage change is not plotted in the above chart for groups with fewer than 30 placed applicants in any one cycle.

AB.7 Placed main scheme applicants to nursing from all domiciles: 1 day after A level results day

All Main scheme placed routes (excluding Adjustment): applicants at 1 day after A level results day

Applicant type	Status	2010	2011	2012	2013	2014	2015	2016	2017	2018	2019
Main scheme	Placed (Clearing)	180	180	150	200	210	240	280	310	360	360
	Placed (Firm)	20,390	17,570	17,590	18,200	20,060	19,900	21,800	20,390	19,830	20,500
	Placed (Insurance)	240	200	210	280	320	350	400	410	390	440
	Placed (Other)	990	850	630	570	850	800	770	910	890	1,040

AB.8 Placed main scheme applicants to nursing from all domiciles: 1 day after A level results day

All Main scheme placed routes (excluding Adjustment): difference between cycle and 2018 cycle

Applicant type	Status	2010	2011	2012	2013	2014	2015	2016	2017	2018	2019
Main scheme	Placed (Clearing)	-50%	-50%	-58%	-44%	-41%	-34%	-21%	-13%	0%	0%
	Placed (Firm)	3%	-11%	-11%	-8%	1%	0%	10%	3%	0%	3%
	Placed (Insurance)	-38%	-48%	-47%	-30%	-19%	-11%	2%	5%	0%	13%
	Placed (Other)	11%	-5%	-30%	-36%	-5%	-10%	-13%	2%	0%	17%

Note: The percentage change is not recorded in the above table for groups with fewer than 10 placed applicants in that cycle or in the 2018 cycle.

AB.9 Main scheme applicants placed to nursing through adjustment: 1 day after A level results day

Placed through adjustment: difference between cycle and 2018 cycle

[This chart is not part of this report]

AB.10 Main scheme applicants placed to nursing through adjustment: 1 day after A level results day

Placed through adjustment: applicants at 1 day after A level results day

Applicant type	Status	2010	2011	2012	2013	2014	2015	2016	2017	2018	2019
Main scheme	Placed (Adjustment)	0	0	0	0	0	0	0	0	0	0

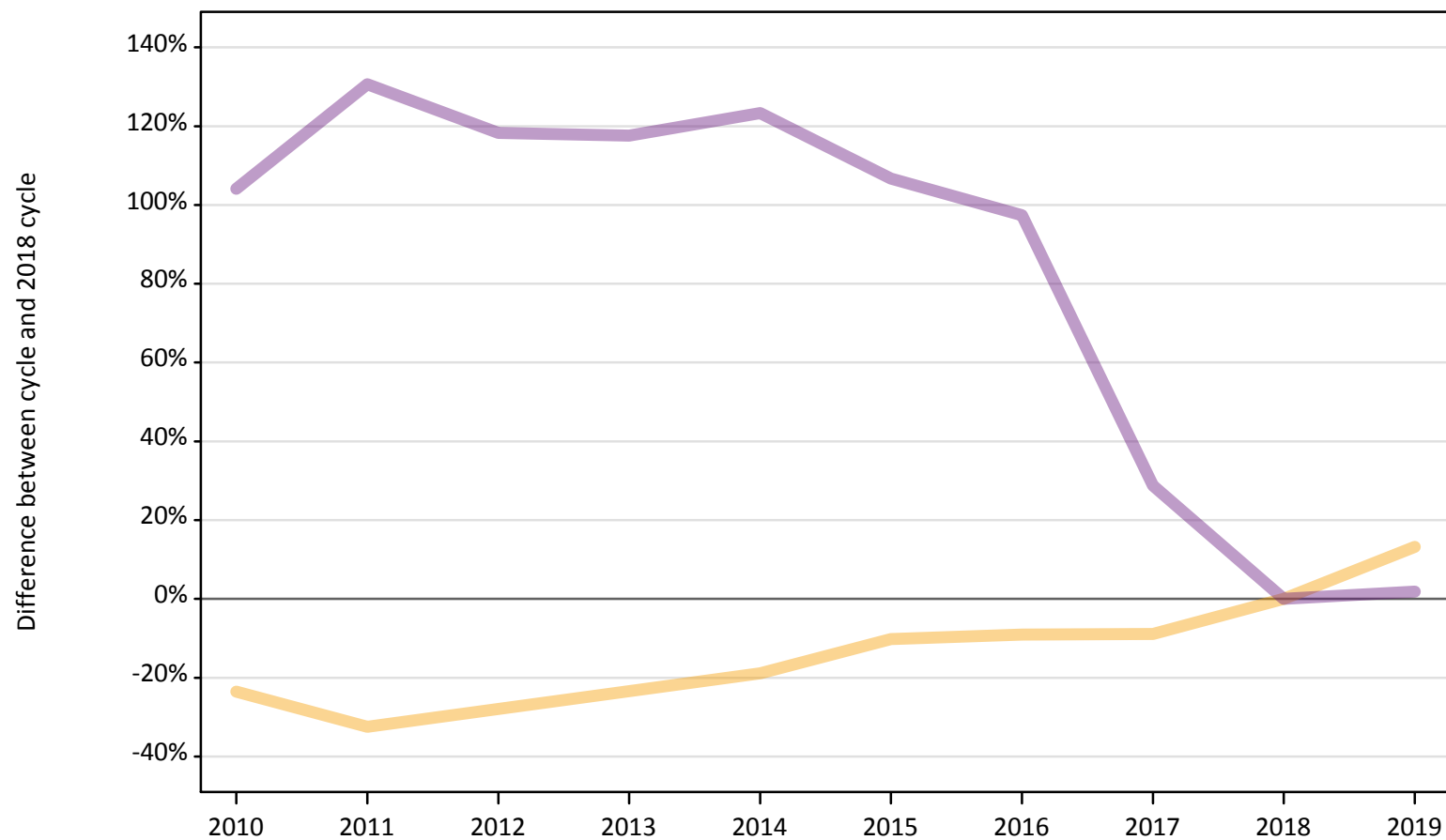
AB.11 Main scheme applicants placed to nursing through adjustment: 1 day after A level results day

Placed through adjustment: difference between cycle and 2018 cycle

[This table is not part of this report]

AB.12 Main scheme applicants to nursing not currently placed from all domiciles: 1 day after A level results day
Applicants in unplaced states: difference between cycle and 2018 cycle

— Holding offer
— Free to be placed in Clearing



Note: The percentage change is not plotted in the above chart for groups with fewer than 30 unplaced applicants in any one cycle.

AB.13 Main scheme applicants to nursing not currently placed from all domiciles: 1 day after A level results day

Applicants in unplaced states: applicants at 1 day after A level results day

Applicant type	Status	2010	2011	2012	2013	2014	2015	2016	2017	2018	2019
Main scheme	Holding offer	5,420	4,790	5,110	5,420	5,750	6,370	6,450	6,460	7,090	8,030
	Free to be placed in Clearing	30,170	34,090	32,260	32,160	33,000	30,550	29,170	19,030	14,780	15,050

AB.14 Main scheme applicants to nursing not currently placed from all domiciles: 1 day after A level results day

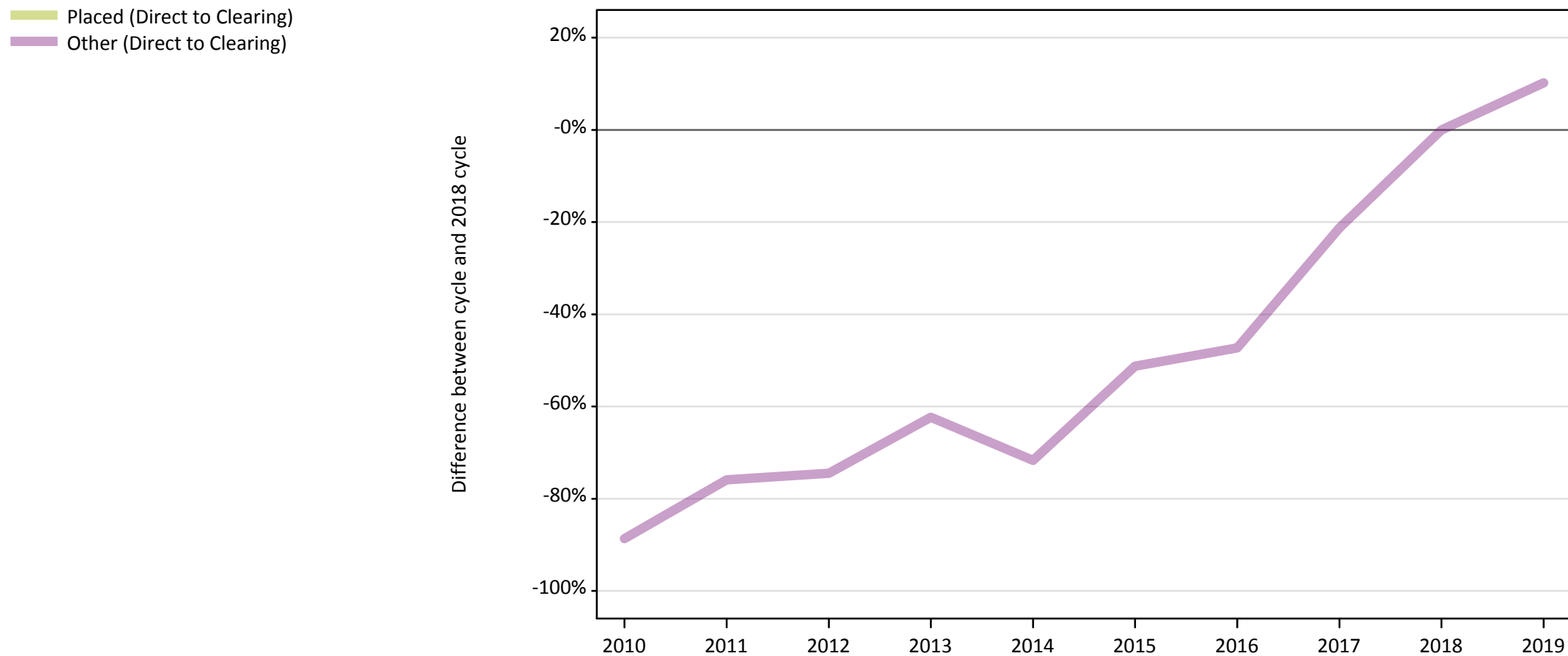
Applicants in unplaced states: difference between cycle and 2018 cycle

Applicant type	Status	2010	2011	2012	2013	2014	2015	2016	2017	2018	2019
Main scheme	Holding offer	-24%	-32%	-28%	-24%	-19%	-10%	-9%	-9%	0%	13%
	Free to be placed in Clearing	104%	131%	118%	118%	123%	107%	97%	29%	0%	2%

Note: The percentage change is not recorded in the above table for groups with fewer than 10 unplaced applicants in that cycle or in the 2018 cycle.

AB.15 Direct to Clearing applicants from all domiciles: 1 day after A level results day

Direct to Clearing: difference between cycle and 2018 cycle



Note: The percentage change is not plotted in the above chart for groups with fewer than 30 placed applicants in any one cycle.

AB.16 Direct to Clearing applicants from all domiciles: 1 day after A level results day

Direct to Clearing 1 day after A level results day

Applicant type	Status	2010	2011	2012	2013	2014	2015	2016	2017	2018	2019
Direct to Clearing	Placed (Direct to Clearing)	30	10	30	40	20	30	60	80	110	120
	Other (Direct to Clearing)	40	90	90	130	100	170	190	280	350	390

AB.17 Direct to Clearing applicants from all domiciles: 1 day after A level results day

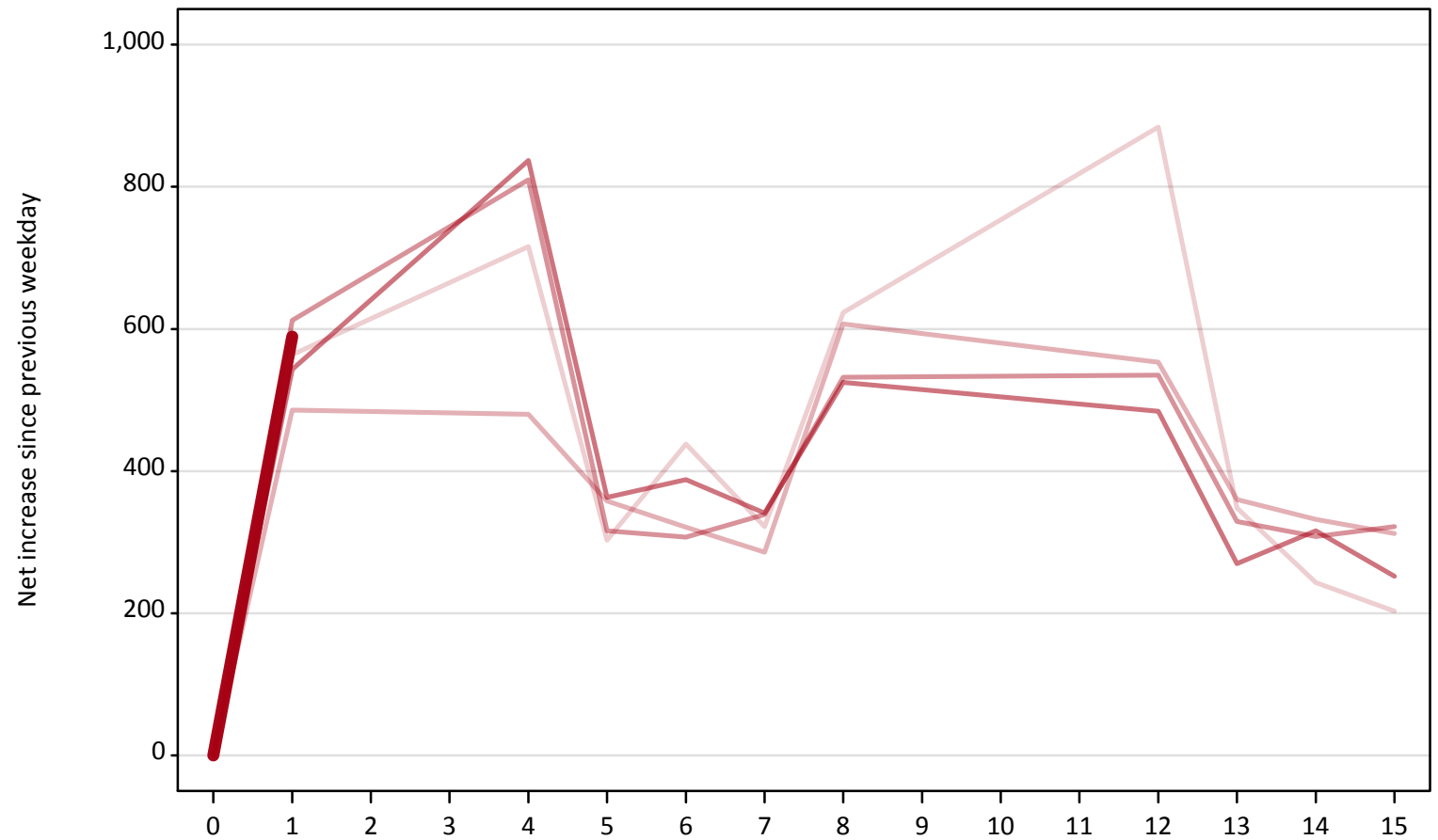
Direct to Clearing: difference between cycle and 2018 cycle

Applicant type	Status	2010	2011	2012	2013	2014	2015	2016	2017	2018	2019
Direct to Clearing	Placed (Direct to Clearing)	-74%	-88%	-76%	-66%	-81%	-68%	-48%	-23%	0%	10%
	Other (Direct to Clearing)	-89%	-76%	-75%	-62%	-72%	-51%	-47%	-21%	0%	10%

Note: The percentage change is not recorded in the above table for groups with fewer than 10 placed applicants in that cycle or in the 2018 cycle.

AB.18 All Placed: Daily net change (from all domiciles)
Net increase since previous weekday (2019 cycle up to 1 day after A level results day)

- 2015
- 2016
- 2017
- 2018
- 2019**



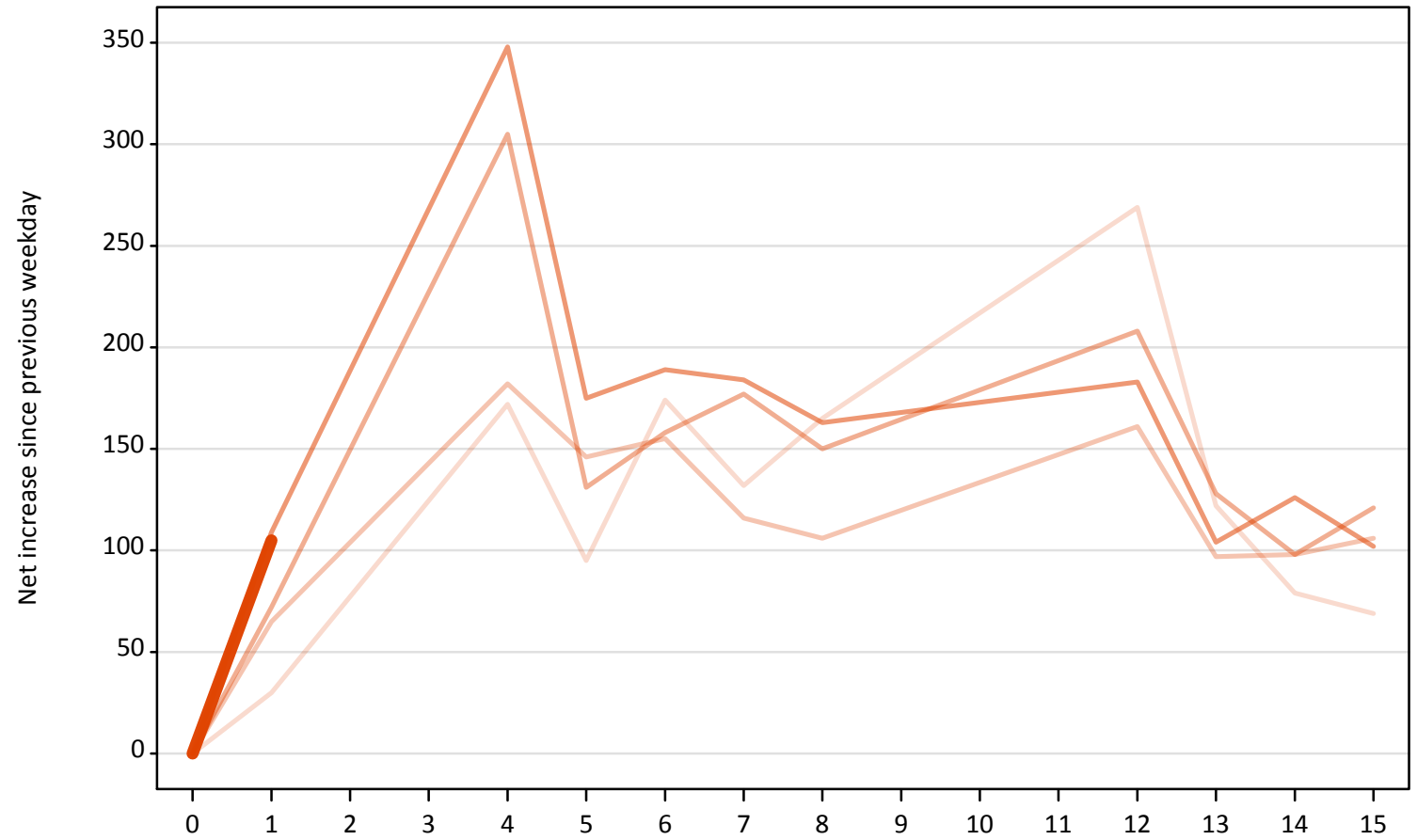
AB.19 All Placed: Daily net change (from all domiciles)

Net increase since previous weekday (2019 cycle up to 1 day after A level results day)

Applicant status, days since A level results day		2015	2016	2017	2018	2019
All Placed	0	0	0	0	0	0
	1	560	490	610	540	590
	4	720	480	810	840	
	5	300	360	320	360	
	6	440	320	310	390	
	7	320	290	340	340	
	8	620	610	530	530	
	12	880	550	540	480	
	13	350	360	330	270	
	14	240	330	310	320	
	15	200	310	320	250	

AB.20 Placed through Clearing only: Daily net change (from all domiciles)
Net increase since previous weekday (2019 cycle up to 1 day after A level results day)

- 2015
- 2016
- 2017
- 2018
- 2019**



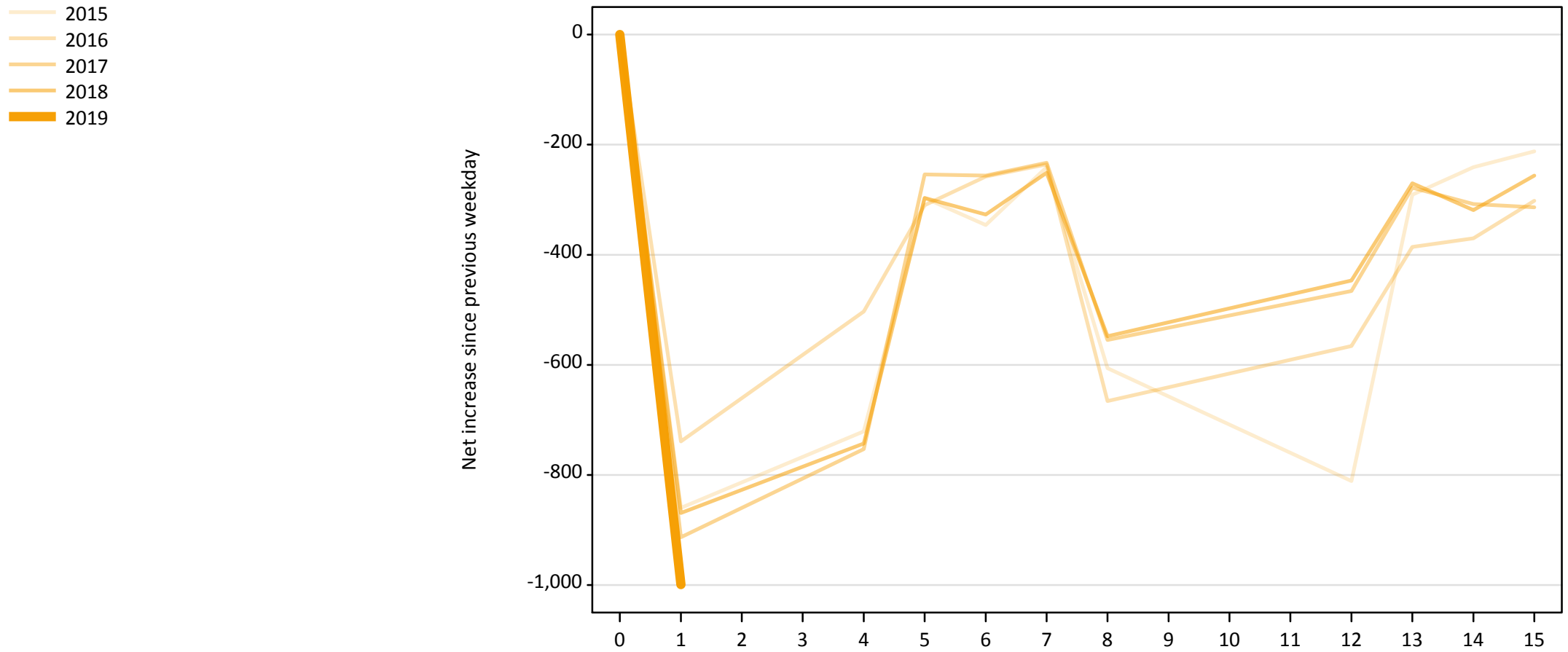
AB.21 Placed through Clearing only: Daily net change (from all domiciles)

Net increase since previous weekday (2019 cycle up to 1 day after A level results day)

Applicant status, days since A level results day		2015	2016	2017	2018	2019
Placed through Clearing only	0	0	0	0	0	0
	1	30	70	70	110	110
	4	170	180	310	350	
	5	100	150	130	180	
	6	170	160	160	190	
	7	130	120	180	180	
	8	170	110	150	160	
	12	270	160	210	180	
	13	120	100	130	100	
	14	80	100	100	130	
	15	70	110	120	100	

AB.22 Holding Offer: Daily net change (from all domiciles)

Net increase since previous weekday (2019 cycle up to 1 day after A level results day)



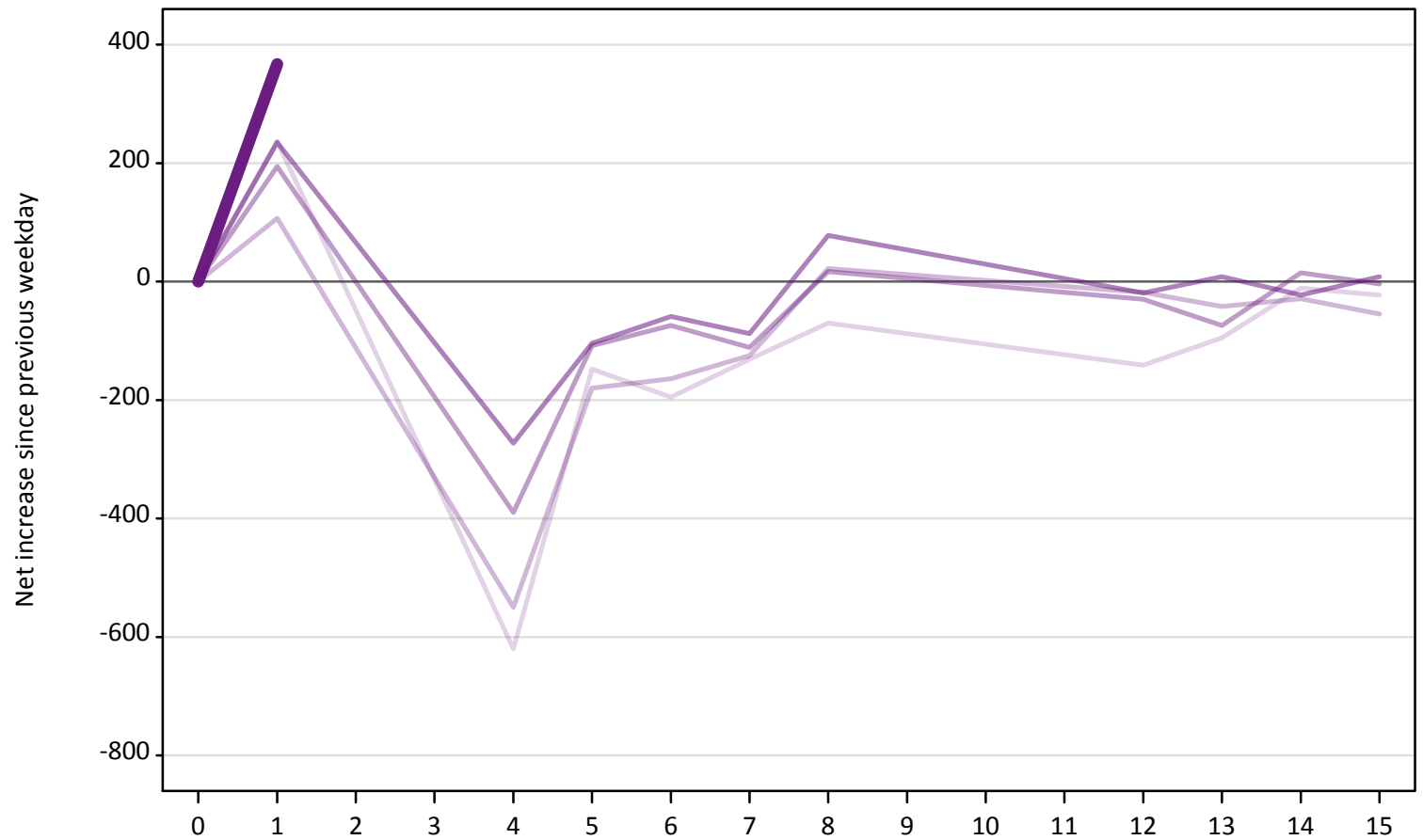
AB.23 Holding Offer: Daily net change (from all domiciles)

Net increase since previous weekday (2019 cycle up to 1 day after A level results day)

Applicant status, days since A level results day	2015	2016	2017	2018	2019	
Holding Offer	0	0	0	0	0	
	1	-860	-740	-910	-870	-1,000
	4	-720	-500	-750	-740	
	5	-300	-310	-250	-300	
	6	-350	-260	-260	-330	
	7	-240	-240	-230	-250	
	8	-610	-670	-560	-550	
	12	-810	-570	-470	-450	
	13	-290	-390	-280	-270	
	14	-240	-370	-310	-320	
	15	-210	-300	-310	-260	

AB.24 Free to be placed in Clearing: Daily net change (from all domiciles)
Net increase since previous weekday (2019 cycle up to 1 day after A level results day)

- 2015
- 2016
- 2017
- 2018
- 2019



AB.25 Free to be placed in Clearing: Daily net change (from all domiciles)
 Net increase since previous weekday (2019 cycle up to 1 day after A level results day)

Applicant status, days since A level results day		2015	2016	2017	2018	2019
Free to be placed in Clearing	0	0	0	0	0	0
	1	240	110	190	240	370
	4	-620	-550	-390	-270	
	5	-150	-180	-110	-100	
	6	-200	-160	-70	-60	
	7	-130	-130	-110	-90	
	8	-70	20	20	80	
	12	-140	-20	-30	-20	
	13	-100	-40	-70	10	
	14	-10	-30	20	-20	
	15	-20	-60	0	10	