

Daily Clearing Analysis: Country

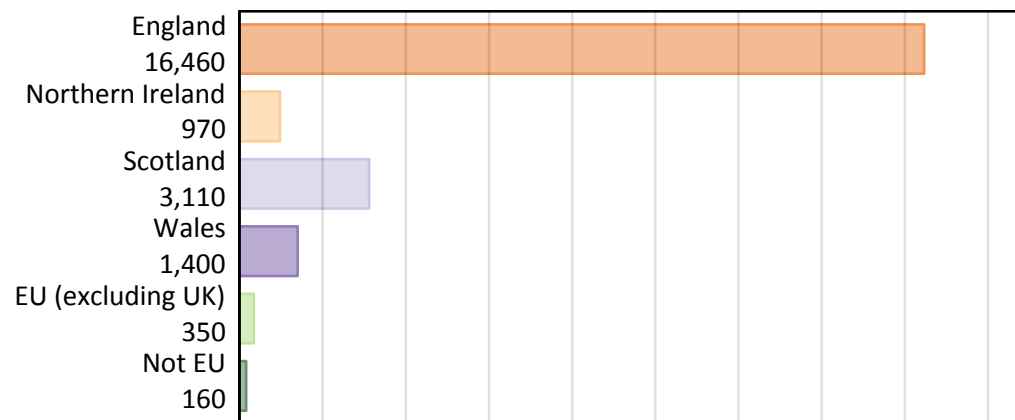
B7 Nursing analysis at 00:05 on Friday 16 August 2019 (1 day after A level results day)

BB.1 Placed applicants to nursing by country of provider and domicile, 2019 cycle

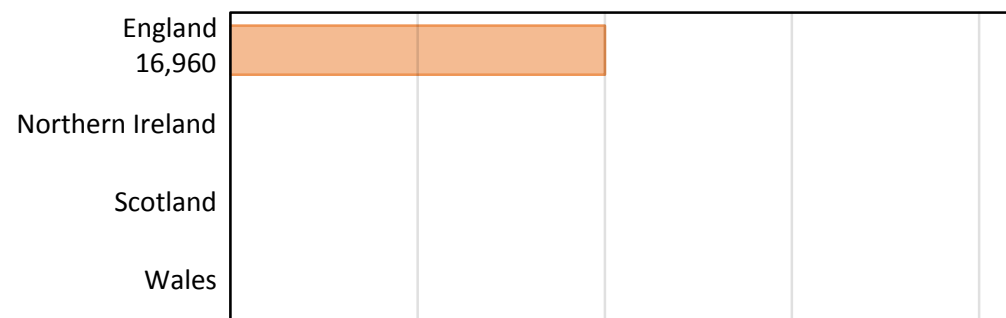
Domicile of applicant	Country of provider				
	England	Northern Ireland	Scotland	Wales	UK
England	16,240				16,460
Northern Ireland	150				970
Scotland	20				3,110
Wales	280				1,400
EU (excluding UK)	120				350
Not EU	140				160
All	16,960				22,460

Note that figures for providers in Northern Ireland, Scotland, and Wales are not reported here.

BB.2 Placed applicants to nursing by domicile group



BB.3 Placed applicants to nursing by country of provider

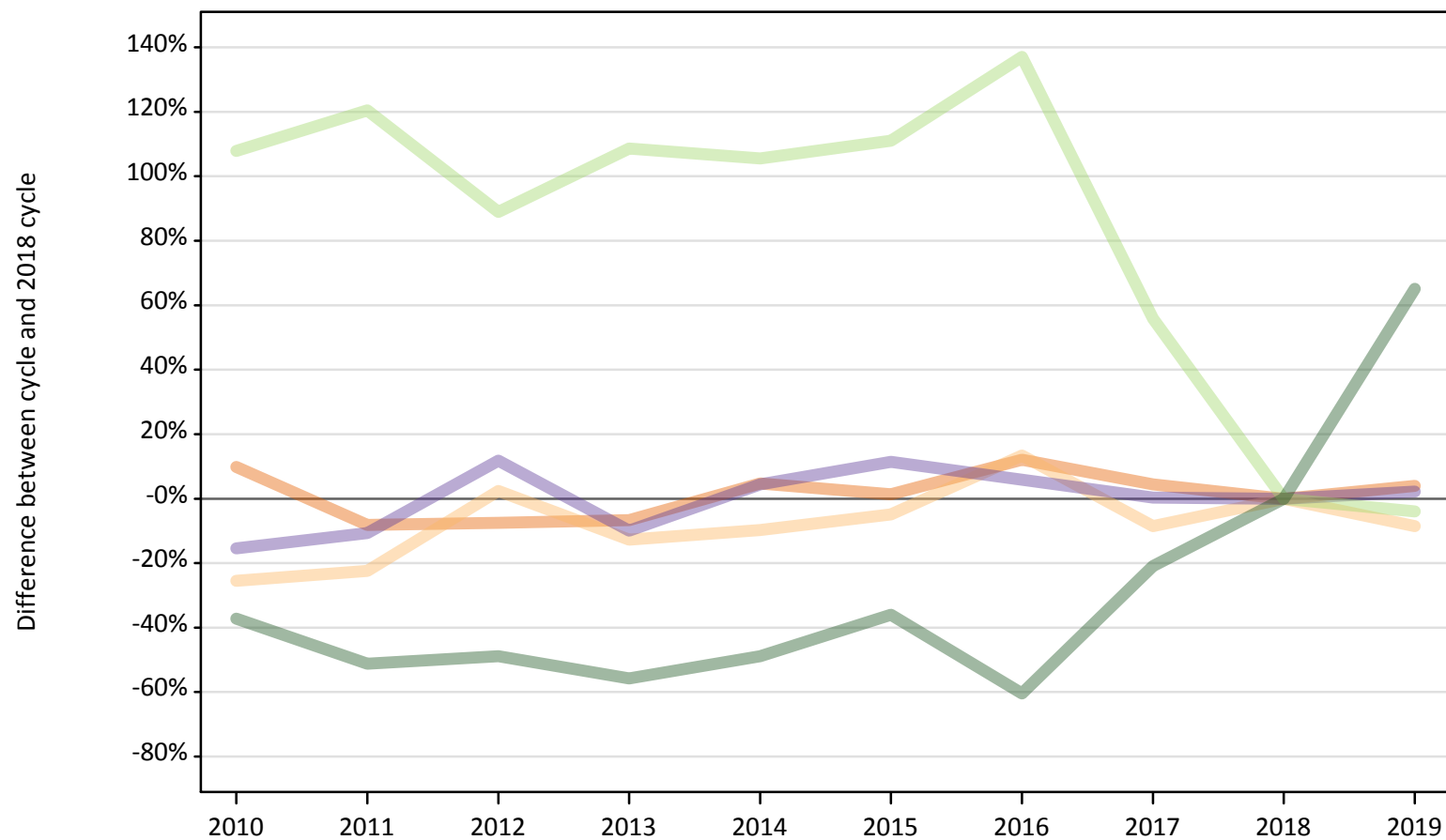


Note that figures for providers in Northern Ireland, Scotland, and Wales are not reported here.

BB.4 Placed applicants to nursing at 1 day after A level results day: providers in England

Selected applicant domiciles: difference between cycle and 2018 cycle (at 1 day after A level results day)

- England
- Northern Ireland
- Scotland
- Wales
- EU (excluding UK)
- Not EU



Note: The percentage change is not plotted in the above chart for groups with fewer than 30 placed applicants in any one cycle.

BB.5 Placed applicants to nursing at 1 day after A level results day: providers in England

Placed applicants to nursing by domicile (at 1 day after A level results day)

Domicile of applicant	2010	2011	2012	2013	2014	2015	2016	2017	2018	2019
England	17,170	14,360	14,460	14,580	16,370	15,840	17,520	16,320	15,630	16,240
Northern Ireland	120	130	170	140	150	160	190	150	170	150
Scotland	30	30	40	20	40	30	30	20	10	20
Wales	230	240	300	250	280	300	290	270	270	280
EU (excluding UK)	260	280	240	270	260	270	300	200	130	120
Not EU	50	40	40	40	40	60	30	70	90	140

BB.6 Placed applicants to nursing at 1 day after A level results day: providers in England

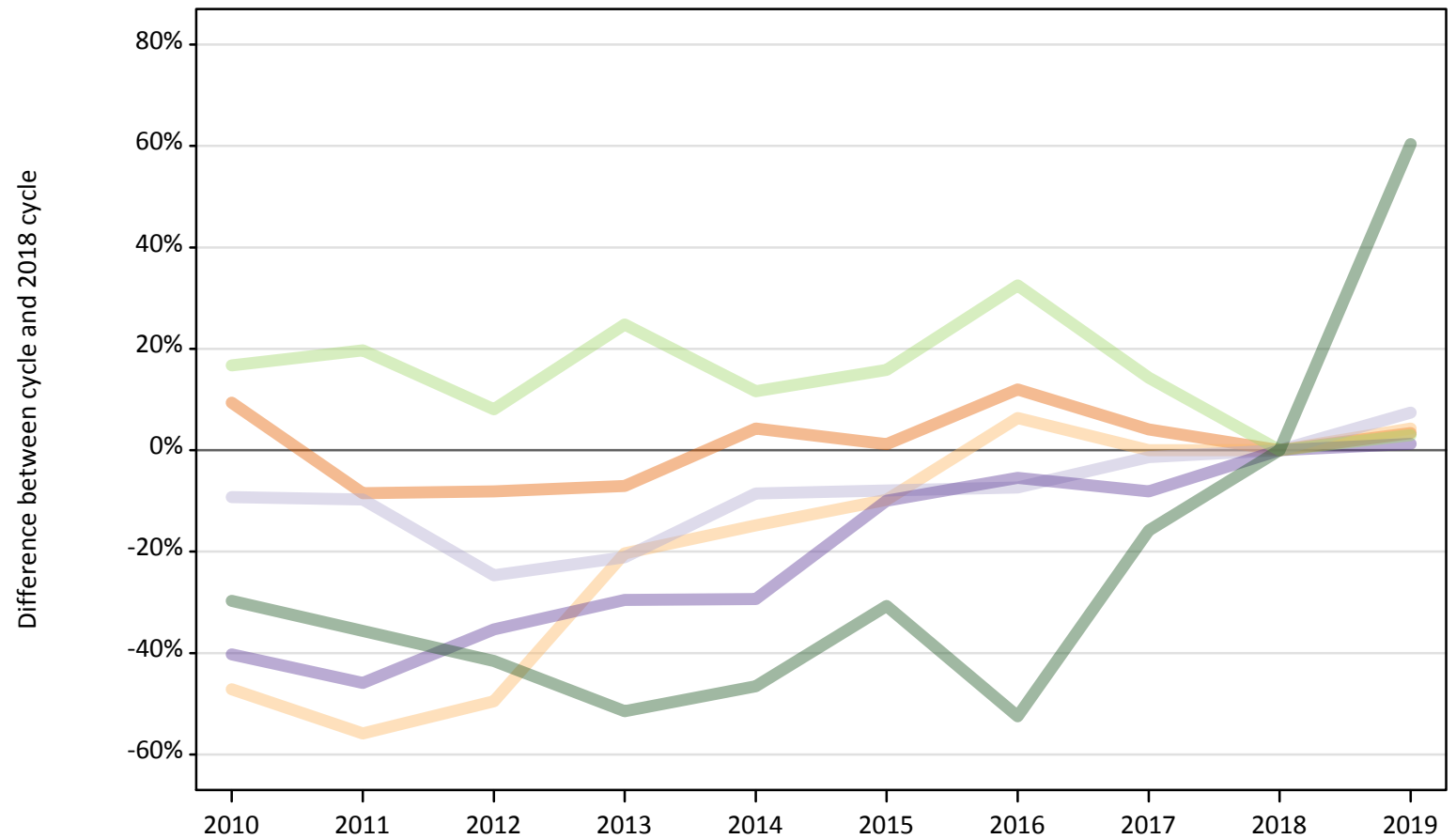
Selected applicant domiciles: difference between cycle and 2018 cycle (at 1 day after A level results day)

Domicile of applicant	2010	2011	2012	2013	2014	2015	2016	2017	2018	2019
England	10%	-8%	-8%	-7%	5%	1%	12%	4%	0%	4%
Northern Ireland	-25%	-22%	2%	-13%	-10%	-5%	13%	-8%	0%	-8%
Scotland	129%	93%	164%	50%	164%	79%	93%	50%	0%	29%
Wales	-15%	-11%	12%	-10%	4%	11%	6%	0%	0%	2%
EU (excluding UK)	108%	120%	89%	109%	106%	111%	137%	56%	0%	-4%
Not EU	-37%	-51%	-49%	-56%	-49%	-36%	-60%	-21%	0%	65%

Note: The percentage change is not recorded in the above table for groups with fewer than 10 placed applicants in that cycle or in the 2018 cycle.

BB.7 Placed applicants to nursing at 1 day after A level results day: providers in the UK
 Selected applicant domiciles: difference between cycle and 2018 cycle (at 1 day after A level results day)

- England
- Northern Ireland
- Scotland
- Wales
- EU (excluding UK)
- Not EU



Note: The percentage change is not plotted in the above chart for groups with fewer than 30 placed applicants in any one cycle.

BB.8 Placed applicants to nursing at 1 day after A level results day: providers in the UK

Placed applicants to nursing by domicile (at 1 day after A level results day)

Domicile of applicant	2010	2011	2012	2013	2014	2015	2016	2017	2018	2019
England	17,410	14,570	14,630	14,810	16,610	16,110	17,830	16,580	15,920	16,460
Northern Ireland	490	410	470	740	790	840	990	930	930	970
Scotland	2,630	2,620	2,180	2,290	2,650	2,670	2,690	2,860	2,900	3,110
Wales	830	750	890	980	980	1,250	1,310	1,270	1,380	1,400
EU (excluding UK)	390	400	360	420	370	390	440	380	340	350
Not EU	70	70	60	50	50	70	50	90	100	160

BB.9 Placed applicants to nursing at 1 day after A level results day: providers in the UK

Selected applicant domiciles: difference between cycle and 2018 cycle (at 1 day after A level results day)

Domicile of applicant	2010	2011	2012	2013	2014	2015	2016	2017	2018	2019
England	9%	-8%	-8%	-7%	4%	1%	12%	4%	0%	3%
Northern Ireland	-47%	-56%	-50%	-20%	-15%	-10%	6%	0%	0%	4%
Scotland	-9%	-10%	-25%	-21%	-9%	-8%	-7%	-1%	0%	7%
Wales	-40%	-46%	-35%	-30%	-29%	-10%	-5%	-8%	0%	1%
EU (excluding UK)	17%	20%	8%	25%	12%	16%	33%	14%	0%	3%
Not EU	-30%	-36%	-42%	-51%	-47%	-31%	-52%	-16%	0%	60%

Note: The percentage change is not recorded in the above table for groups with fewer than 10 placed applicants in that cycle or in the 2018 cycle.