

B7 Nursing analysis at 00:05 on Friday 16 August 2019 (1 day after A level results day)

CB.1 Placed applicants to nursing by country of domicile and age group, 2019 cycle (1 day after A level results day)

Domicile of applicant	Age group				
	17 and under	18	19	20 to 24	25 and over
England	0	4,210	1,940	3,620	6,680
Northern Ireland	0	310	170	230	260
Scotland	20	650	330	720	1,410
Wales	0	280	190	340	590
UK	30	5,460	2,630	4,900	8,940

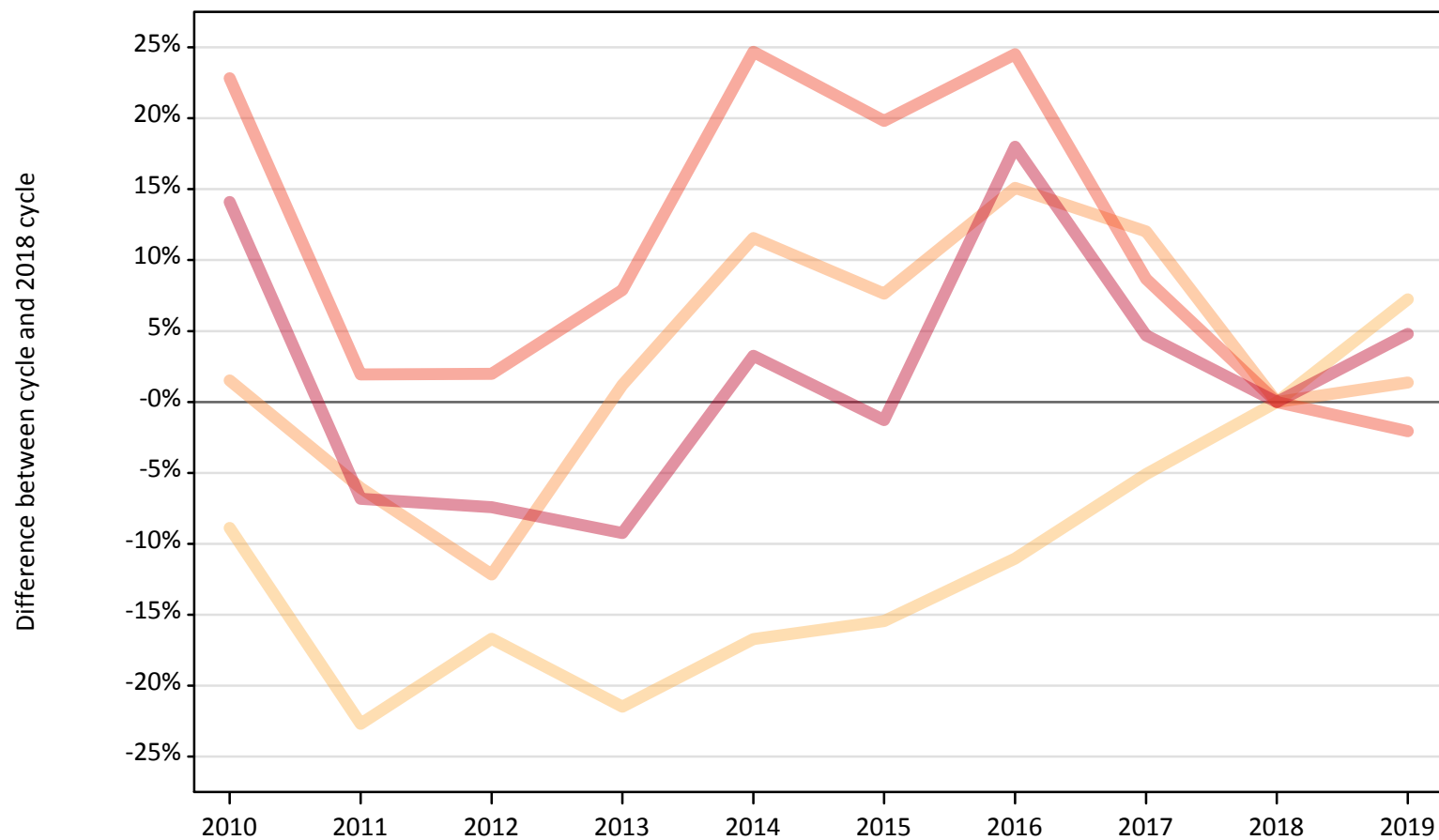
CB.2 Proportion of 18 year old population placed to nursing by country of domicile, 2019 cycle (1 day after A level results day)

Domicile of applicant	Age group	2019
England	18	0.7%
Northern Ireland	18	1.4%
Scotland	18	1.2%
Wales	18	0.8%

CB.3 Placed applicants to nursing from England by age group at 1 day after A level results day

Selected age groups: difference between cycle and 2018 cycle

- 17 and under
- 18
- 19
- 20 to 24
- 25 and over



Note: The percentage change is not plotted in the above chart for groups with fewer than 30 placed applicants in any one cycle.

CB.4 Placed applicants to nursing from England by age group at 1 day after A level results day

All age groups

Domicile of applicant	Age group	2010	2011	2012	2013	2014	2015	2016	2017	2018	2019
England	17 and under	70	20	0	0	10	0	0	10	0	0
	18	3,580	3,040	3,270	3,090	3,270	3,320	3,500	3,730	3,930	4,210
	19	1,940	1,800	1,680	1,940	2,140	2,060	2,200	2,140	1,910	1,940
	20 to 24	4,540	3,770	3,770	3,990	4,610	4,430	4,610	4,020	3,700	3,620
	25 and over	7,280	5,940	5,900	5,790	6,590	6,300	7,530	6,680	6,380	6,680

CB.5 Placed applicants to nursing from England by age group at 1 day after A level results day

Selected age groups: difference between cycle and 2018 cycle

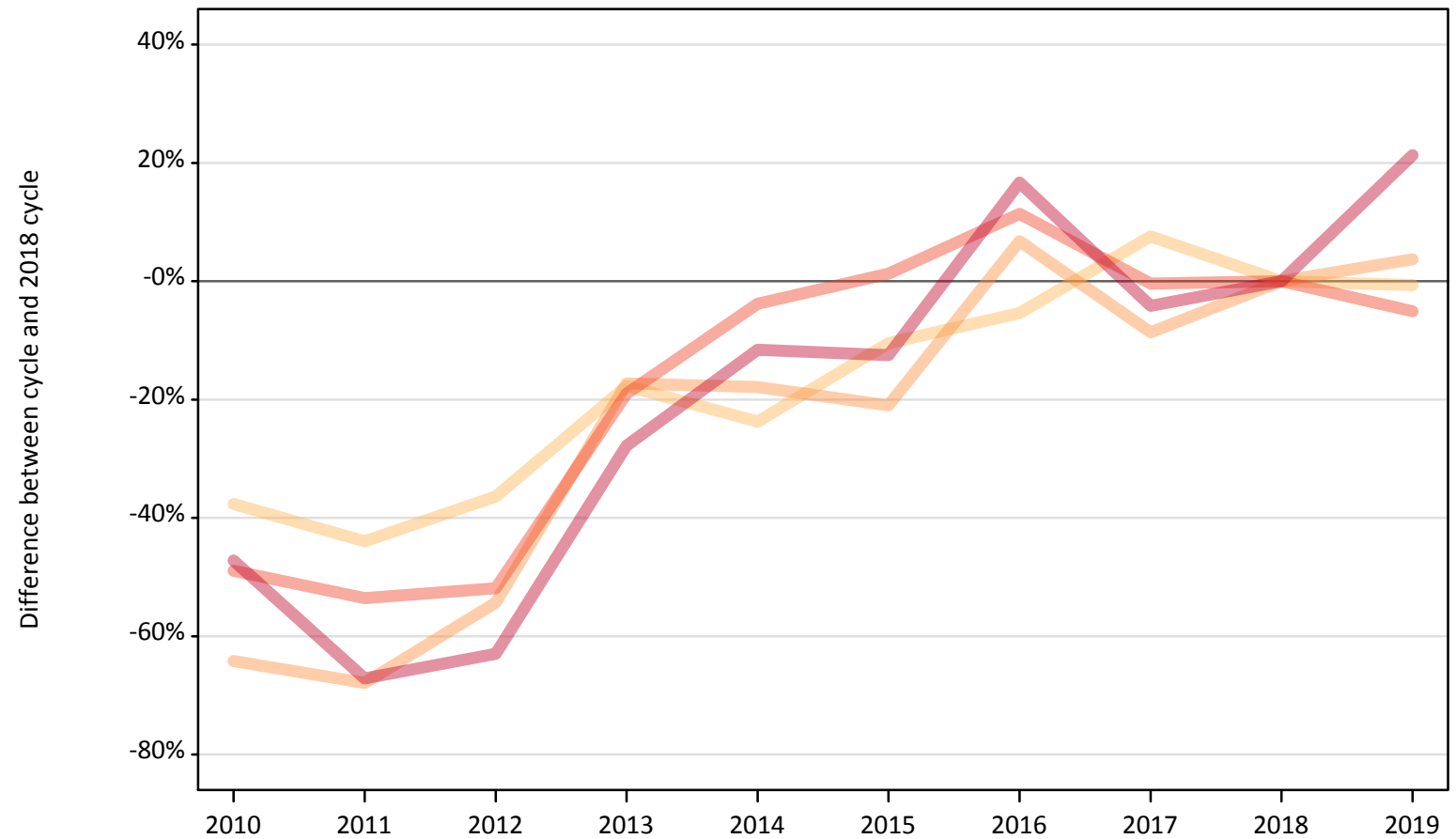
Domicile of applicant	Age group	2010	2011	2012	2013	2014	2015	2016	2017	2018	2019
England	17 and under										
	18	-9%	-23%	-17%	-21%	-17%	-15%	-11%	-5%	0%	7%
	19	2%	-6%	-12%	1%	12%	8%	15%	12%	0%	1%
	20 to 24	23%	2%	2%	8%	25%	20%	25%	9%	0%	-2%
	25 and over	14%	-7%	-7%	-9%	3%	-1%	18%	5%	0%	5%

Note: The percentage change is not recorded in the above table for groups with fewer than 10 placed applicants in that cycle or in the 2018 cycle.

CB.6 Placed applicants to nursing from Northern Ireland by age group at 1 day after A level results day

Selected age groups: difference between cycle and 2018 cycle

- 17 and under
- 18
- 19
- 20 to 24
- 25 and over



Note: The percentage change is not plotted in the above chart for groups with fewer than 30 placed applicants in any one cycle.

CB.7 Placed applicants to nursing from Northern Ireland by age group at 1 day after A level results day

All age groups

Domicile of applicant	Age group	2010	2011	2012	2013	2014	2015	2016	2017	2018	2019
Northern Ireland	17 and under	0	0	0	0	0	0	0	0	0	0
	18	200	180	200	260	240	280	300	340	320	310
	19	60	50	70	130	130	130	170	150	160	170
	20 to 24	120	110	110	190	230	240	260	240	240	230
	25 and over	110	70	80	160	190	190	250	210	220	260

CB.8 Placed applicants to nursing from Northern Ireland by age group at 1 day after A level results day

Selected age groups: difference between cycle and 2018 cycle

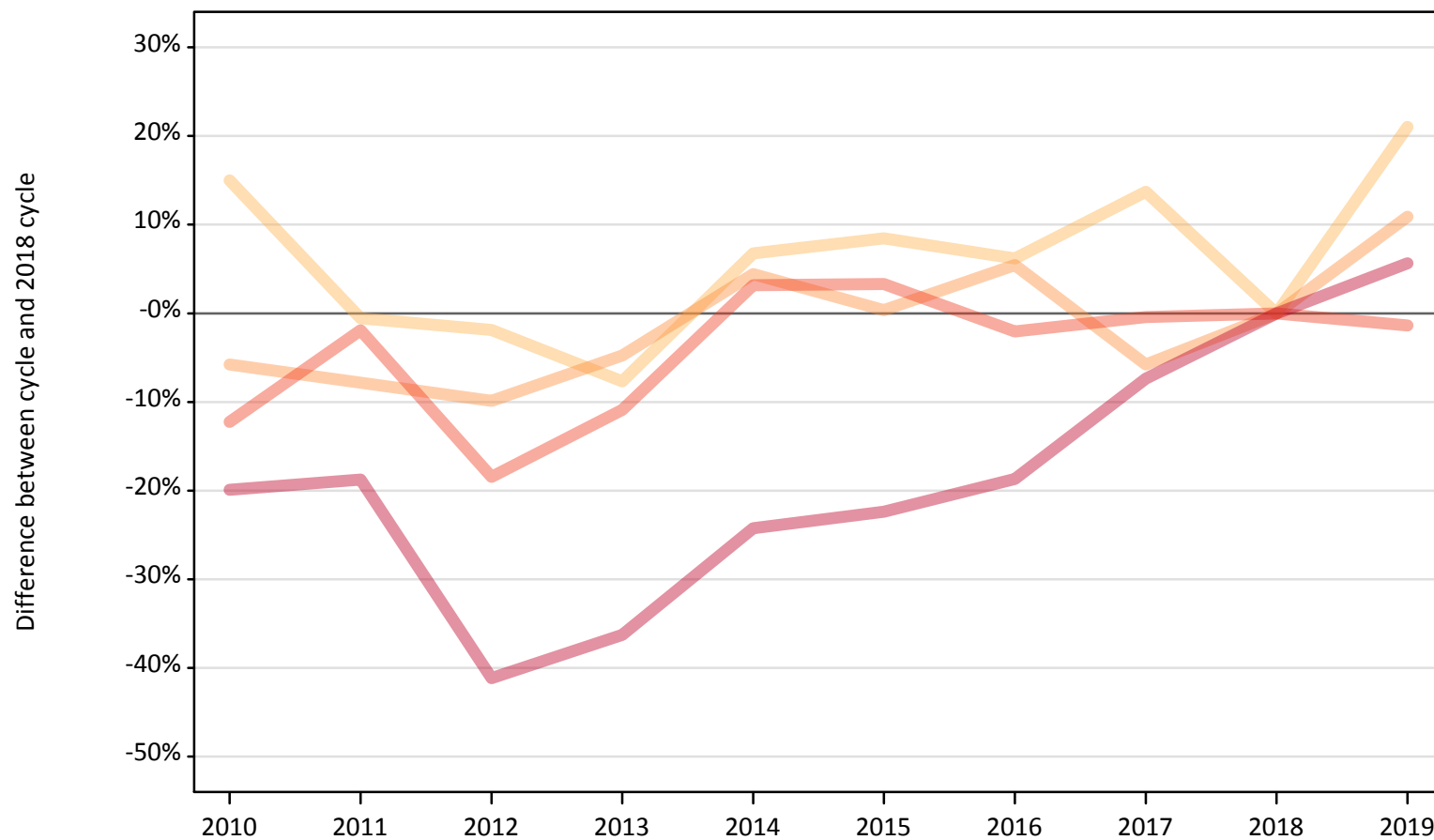
Domicile of applicant	Age group	2010	2011	2012	2013	2014	2015	2016	2017	2018	2019
Northern Ireland	17 and under										
	18	-38%	-44%	-36%	-18%	-24%	-10%	-5%	8%	0%	-1%
	19	-64%	-68%	-54%	-17%	-18%	-21%	7%	-9%	0%	4%
	20 to 24	-49%	-54%	-52%	-19%	-4%	1%	11%	-0%	0%	-5%
	25 and over	-47%	-67%	-63%	-28%	-12%	-13%	17%	-4%	0%	21%

Note: The percentage change is not recorded in the above table for groups with fewer than 10 placed applicants in that cycle or in the 2018 cycle.

CB.9 Placed applicants to nursing from Scotland by age group at 1 day after A level results day

Selected age groups: difference between cycle and 2018 cycle

- 17 and under
- 18
- 19
- 20 to 24
- 25 and over



Note: The percentage change is not plotted in the above chart for groups with fewer than 30 placed applicants in any one cycle.

CB.10 Placed applicants to nursing from Scotland by age group at 1 day after A level results day

All age groups

Domicile of applicant	Age group	2010	2011	2012	2013	2014	2015	2016	2017	2018	2019
Scotland	17 and under	40	20	20	20	20	10	20	20	10	20
	18	610	530	520	490	570	580	570	610	530	650
	19	280	270	270	280	310	300	310	280	290	330
	20 to 24	640	710	590	650	750	750	710	720	730	720
	25 and over	1,070	1,080	780	850	1,010	1,030	1,080	1,230	1,330	1,410

CB.11 Placed applicants to nursing from Scotland by age group at 1 day after A level results day

Selected age groups: difference between cycle and 2018 cycle

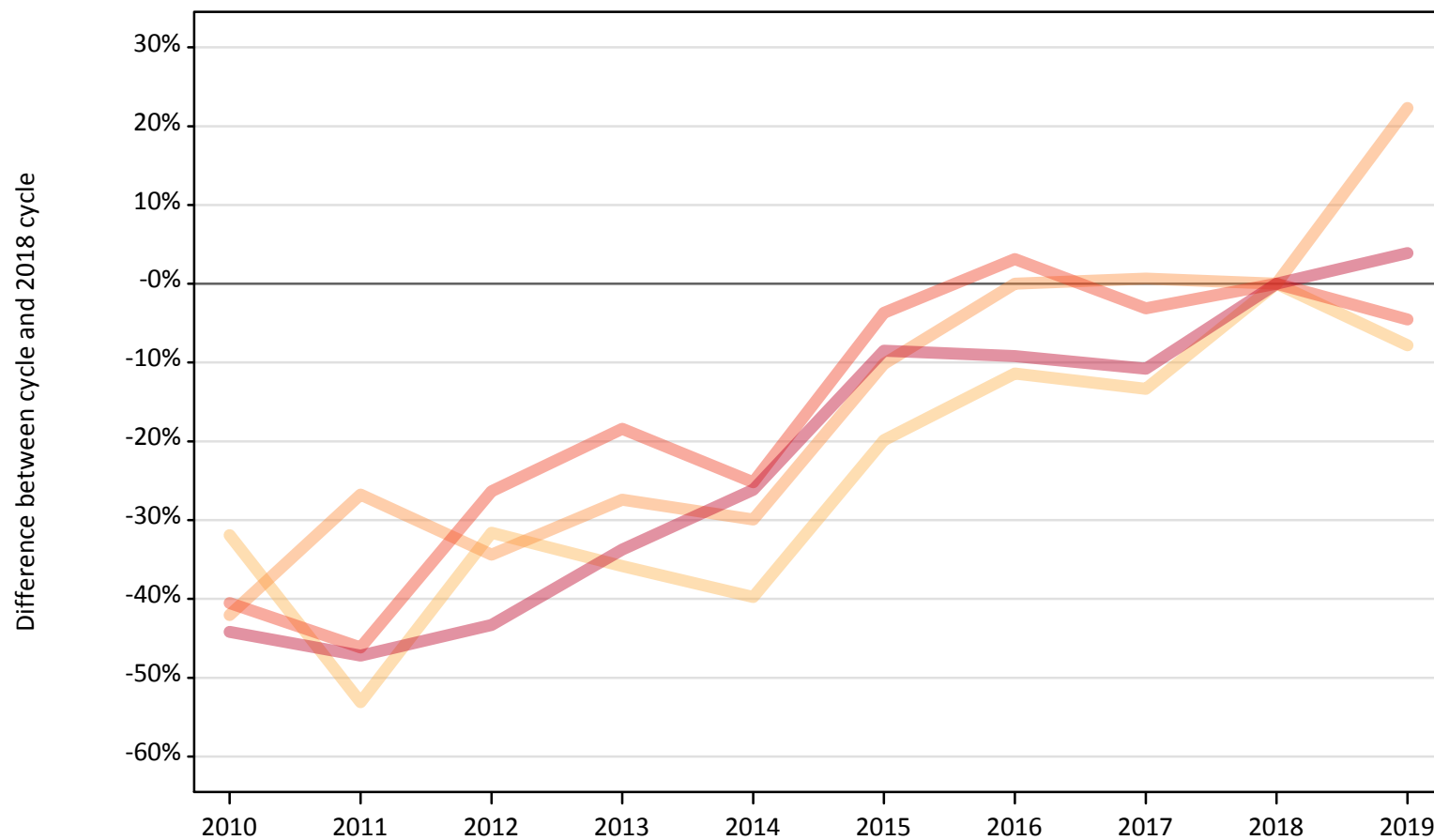
Domicile of applicant	Age group	2010	2011	2012	2013	2014	2015	2016	2017	2018	2019
Scotland	17 and under	164%	64%	43%	36%	21%	-14%	14%	36%	0%	43%
	18	15%	-1%	-2%	-8%	7%	8%	6%	14%	0%	21%
	19	-6%	-8%	-10%	-5%	4%	0%	5%	-6%	0%	11%
	20 to 24	-12%	-2%	-18%	-11%	3%	3%	-2%	-0%	0%	-1%
	25 and over	-20%	-19%	-41%	-36%	-24%	-22%	-19%	-7%	0%	6%

Note: The percentage change is not recorded in the above table for groups with fewer than 10 placed applicants in that cycle or in the 2018 cycle.

CB.12 Placed applicants to nursing from Wales by age group at 1 day after A level results day

Selected age groups: difference between cycle and 2018 cycle

- 17 and under
- 18
- 19
- 20 to 24
- 25 and over



Note: The percentage change is not plotted in the above chart for groups with fewer than 30 placed applicants in any one cycle.

CB.13 Placed applicants to nursing from Wales by age group at 1 day after A level results day

All age groups

Domicile of applicant	Age group	2010	2011	2012	2013	2014	2015	2016	2017	2018	2019
Wales	17 and under	0	0	0	0	0	0	0	0	0	0
	18	210	140	210	200	190	250	270	270	310	280
	19	90	120	100	110	110	140	160	160	160	190
	20 to 24	210	190	260	290	260	340	360	340	350	340
	25 and over	320	300	320	380	420	520	510	510	570	590

CB.14 Placed applicants to nursing from Wales by age group at 1 day after A level results day

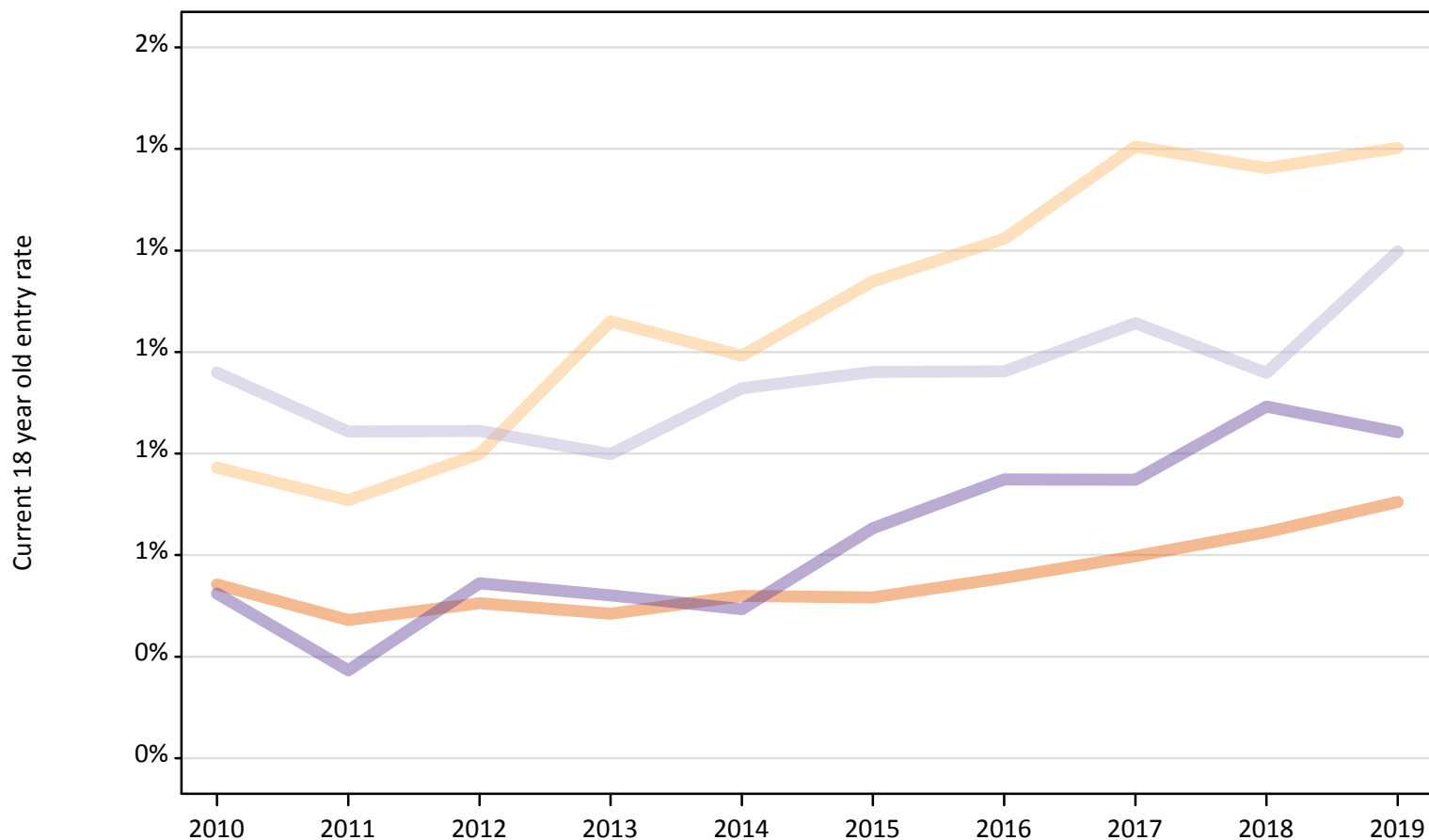
Selected age groups: difference between cycle and 2018 cycle

Domicile of applicant	Age group	2010	2011	2012	2013	2014	2015	2016	2017	2018	2019
Wales	17 and under										
	18	-32%	-53%	-32%	-36%	-40%	-20%	-11%	-13%	0%	-8%
	19	-42%	-27%	-34%	-27%	-30%	-10%	0%	1%	0%	22%
	20 to 24	-41%	-46%	-26%	-18%	-25%	-4%	3%	-3%	0%	-5%
	25 and over	-44%	-47%	-43%	-34%	-26%	-8%	-9%	-11%	0%	4%

Note: The percentage change is not recorded in the above table for groups with fewer than 10 placed applicants in that cycle or in the 2018 cycle.

CB.15 Entry rates to nursing for 18 year olds by UK country of domicile: 1 day after A level results day

Placed 18 year old applicants as a proportion of the 18 year old population



CB.16 Entry rates to nursing for 18 year olds by UK country of domicile: 1 day after A level results day

Placed 18 year old applicants as a proportion of the 18 year old population

Domicile of applicant	Age group	2010	2011	2012	2013	2014	2015	2016	2017	2018	2019
England	18	0.5%	0.5%	0.5%	0.5%	0.5%	0.5%	0.6%	0.6%	0.6%	0.7%
Northern Ireland	18	0.8%	0.7%	0.8%	1.1%	1.0%	1.1%	1.2%	1.4%	1.4%	1.4%
Scotland	18	1.0%	0.8%	0.8%	0.8%	0.9%	1.0%	1.0%	1.1%	1.0%	1.2%
Wales	18	0.5%	0.4%	0.5%	0.5%	0.5%	0.7%	0.7%	0.7%	0.9%	0.8%