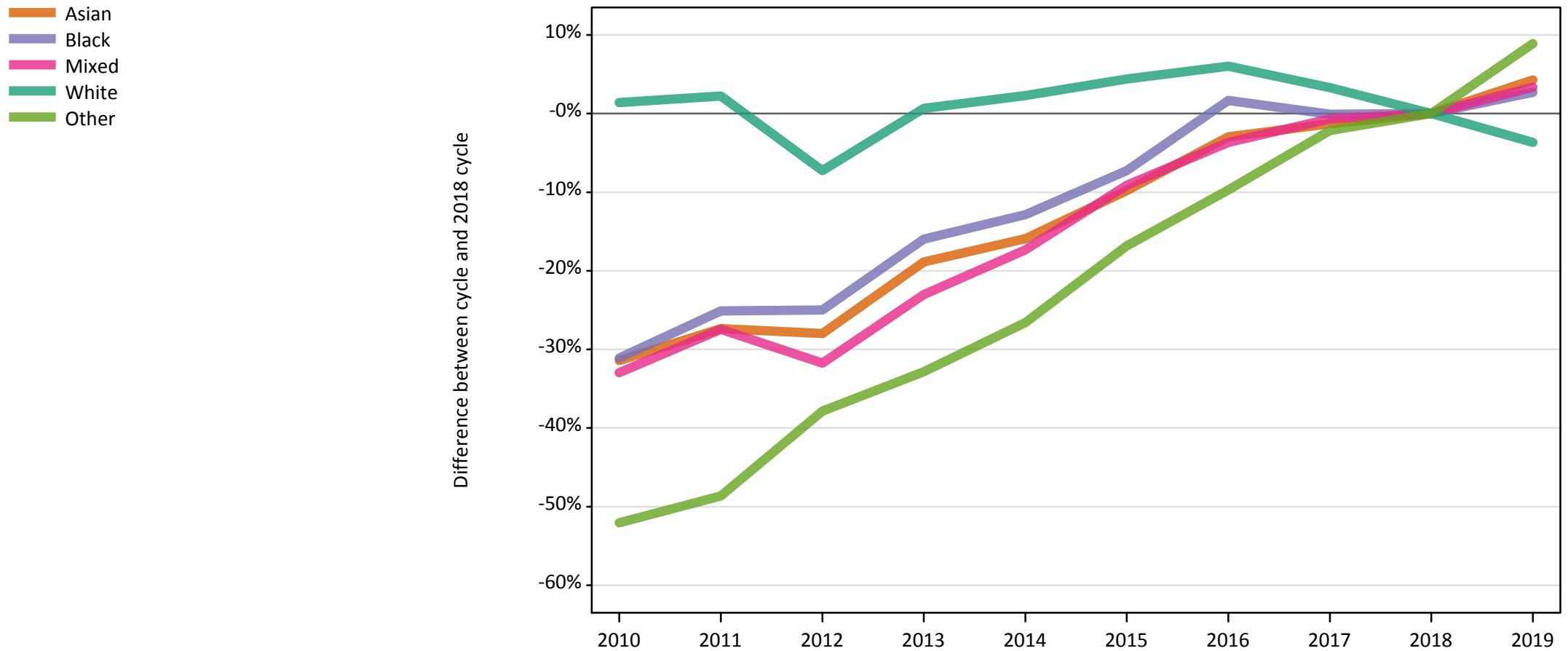


Daily Clearing Analysis: Ethnicity

Analysis at 00:05 on Friday 16 August 2019 (1 day after A level results day)

E.1 Placed applicants from UK by ethnic group: 1 day after A level results day

Placed applicants: change relative to 2018 cycle totals



Note: The percentage change is not plotted in the above chart for groups with fewer than 30 placed applicants in any one cycle.

E.2 Placed applicants from UK by ethnic group: 1 day after A level results day

Applicant Status	Ethnic group	2010	2011	2012	2013	2014	2015	2016	2017	2018	2019
Placed	Asian	28,390	30,070	29,820	33,580	34,800	37,340	40,170	40,860	41,390	43,160
	Black	16,900	18,370	18,400	20,620	21,380	22,750	24,940	24,520	24,530	25,200
	Mixed	11,170	12,090	11,370	12,820	13,770	15,140	16,050	16,540	16,660	17,220
	White	282,650	285,010	258,520	280,610	285,130	291,040	295,560	287,990	278,760	268,510
	Other	2,880	3,090	3,740	4,040	4,410	5,000	5,430	5,880	6,010	6,550

E.3 Placed applicants from UK by ethnic group: 1 day after A level results day

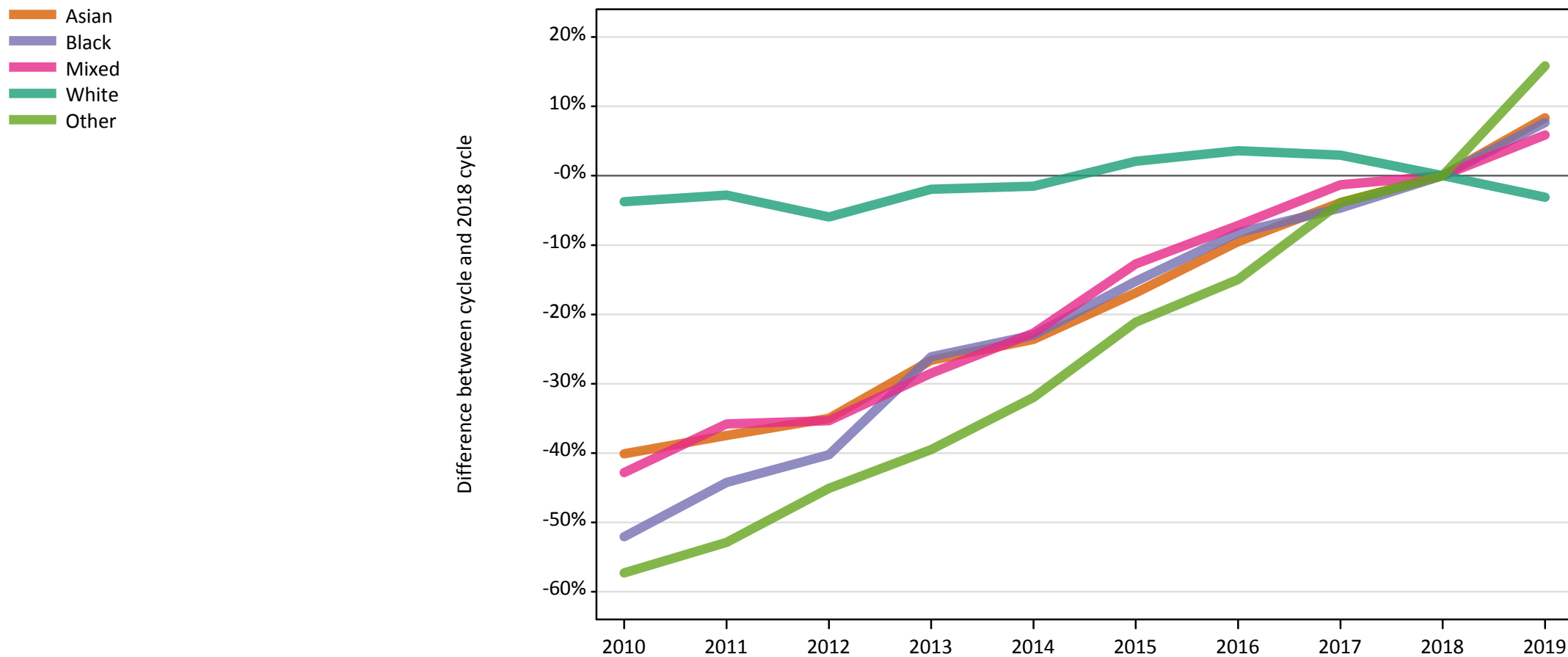
Placed applicants: change relative to 2018 cycle totals

Applicant Status	Ethnic group	2010	2011	2012	2013	2014	2015	2016	2017	2018	2019
Placed	Asian	-31%	-27%	-28%	-19%	-16%	-10%	-3%	-1%	0%	4%
	Black	-31%	-25%	-25%	-16%	-13%	-7%	2%	-0%	0%	3%
	Mixed	-33%	-27%	-32%	-23%	-17%	-9%	-4%	-1%	0%	3%
	White	1%	2%	-7%	1%	2%	4%	6%	3%	0%	-4%
	Other	-52%	-49%	-38%	-33%	-27%	-17%	-10%	-2%	0%	9%

Note: The percentage change is not recorded in the above table for groups with fewer than 10 placed applicants in that cycle or in the 2018 cycle.

E.4 Placed 18 year old applicants from UK by ethnic group: 1 day after A level results day

Placed 18 year old applicants: change relative to 2018 cycle totals



Note: The percentage change is not plotted in the above chart for groups with fewer than 30 placed applicants in any one cycle.

E.5 Placed 18 year old applicants from UK by ethnic group: 1 day after A level results day

Applicant Status	Ethnic group	2010	2011	2012	2013	2014	2015	2016	2017	2018	2019
Placed	Asian	14,820	15,470	16,090	18,160	18,910	20,570	22,390	23,790	24,750	26,810
	Black	4,940	5,740	6,160	7,610	7,930	8,730	9,460	9,820	10,300	11,090
	Mixed	5,360	6,010	6,060	6,700	7,240	8,180	8,700	9,250	9,370	9,920
	White	156,840	158,390	153,270	159,770	160,510	166,360	168,860	167,800	162,970	157,940
	Other	1,290	1,420	1,660	1,830	2,050	2,380	2,570	2,900	3,020	3,500

E.6 Placed 18 year old applicants from UK by ethnic group: 1 day after A level results day

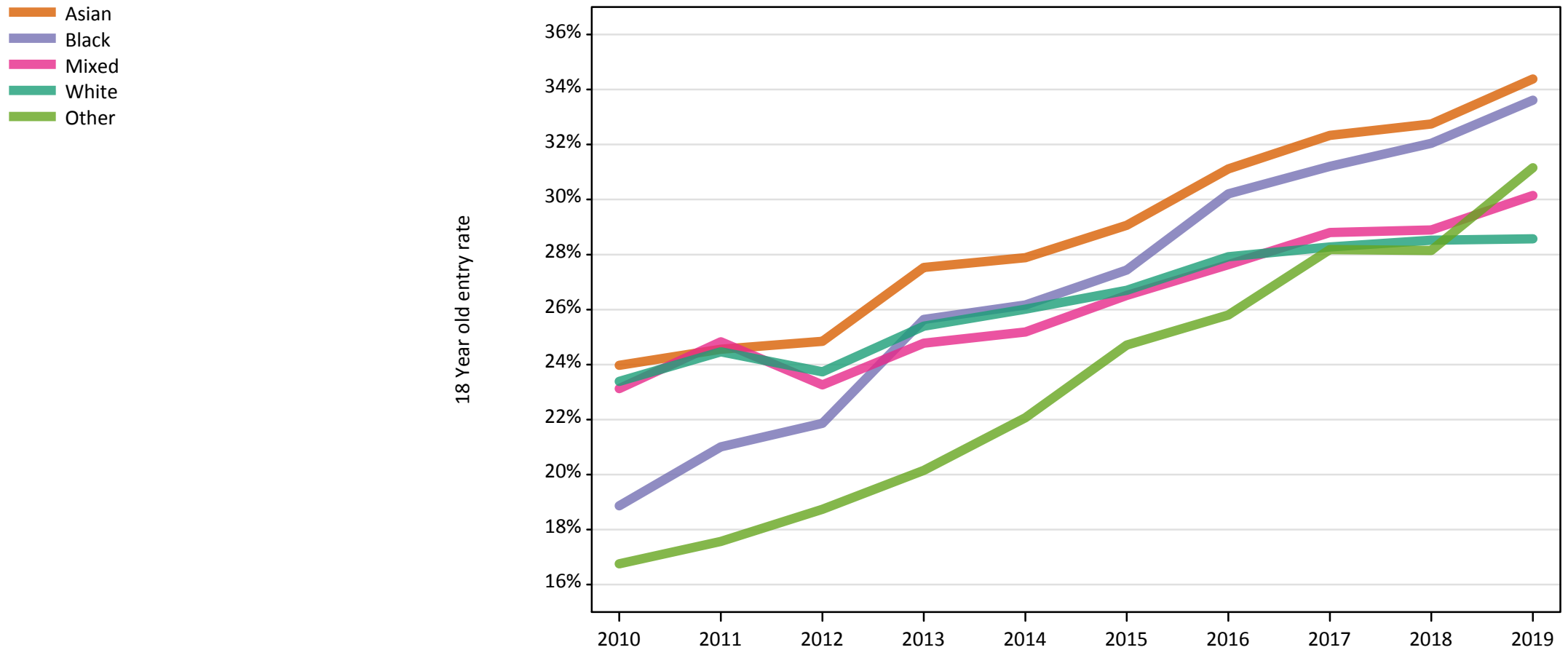
Placed 18 year old applicants: change relative to 2018 cycle totals

Applicant Status	Ethnic group	2010	2011	2012	2013	2014	2015	2016	2017	2018	2019
Placed	Asian	-40%	-37%	-35%	-27%	-24%	-17%	-10%	-4%	0%	8%
	Black	-52%	-44%	-40%	-26%	-23%	-15%	-8%	-5%	0%	8%
	Mixed	-43%	-36%	-35%	-28%	-23%	-13%	-7%	-1%	0%	6%
	White	-4%	-3%	-6%	-2%	-2%	2%	4%	3%	0%	-3%
	Other	-57%	-53%	-45%	-40%	-32%	-21%	-15%	-4%	0%	16%

Note: The percentage change is not recorded in the above table for groups with fewer than 10 placed applicants in that cycle or in the 2018 cycle.

E.7 Placed 18 year old applicants from UK by ethnic group: 1 day after A level results day

Placed 18 year old applicants: entry rate



E.8 Placed 18 year old applicants from UK by ethnic group: 1 day after A level results day

Placed 18 year old applicants: entry rate

Applicant Status	Ethnic group	2010	2011	2012	2013	2014	2015	2016	2017	2018	2019
Placed	Asian	24.0%	24.6%	24.8%	27.5%	27.9%	29.1%	31.1%	32.3%	32.7%	34.4%
	Black	18.9%	21.0%	21.9%	25.6%	26.2%	27.4%	30.2%	31.2%	32.0%	33.6%
	Mixed	23.1%	24.8%	23.3%	24.8%	25.2%	26.5%	27.6%	28.8%	28.9%	30.1%
	White	23.4%	24.5%	23.7%	25.4%	26.0%	26.7%	27.9%	28.3%	28.5%	28.6%
	Other	16.8%	17.6%	18.7%	20.1%	22.1%	24.7%	25.8%	28.2%	28.1%	31.2%

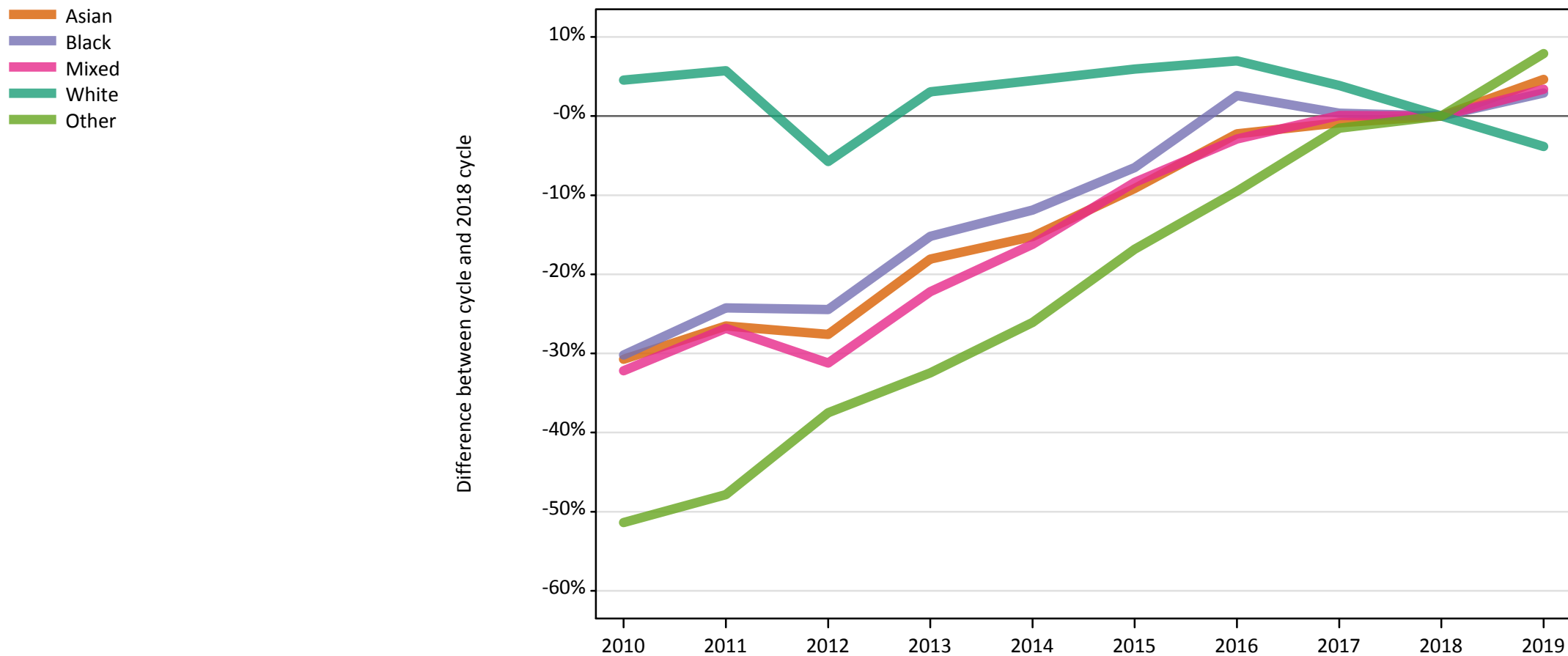
E.9 Placed 18 year old applicants from UK by ethnic group: 1 day after A level results day

Placed 18 year old applicants: entry rate (indexed to 100 = White ethnic group)

Applicant Status	Ethnic group	2010	2011	2012	2013	2014	2015	2016	2017	2018	2019
Placed	Asian	103	100	105	108	107	109	111	114	115	120
	Black	81	86	92	101	101	103	108	110	112	118
	Mixed	99	101	98	98	97	99	99	102	101	106
	White	100	100	100	100	100	100	100	100	100	100
	Other	72	72	79	79	85	93	92	100	99	109

E.10 Placed applicants from England by ethnic group: 1 day after A level results day

Placed applicants: change relative to 2018 cycle totals



Note: The percentage change is not plotted in the above chart for groups with fewer than 30 placed applicants in any one cycle.

E.11 Placed applicants from England by ethnic group: 1 day after A level results day

Applicant Status	Ethnic group	2010	2011	2012	2013	2014	2015	2016	2017	2018	2019
Placed	Asian	26,980	28,620	28,200	31,910	33,020	35,380	38,070	38,630	38,950	40,760
	Black	16,530	17,940	17,890	20,090	20,870	22,140	24,300	23,770	23,690	24,380
	Mixed	10,450	11,280	10,610	11,990	12,910	14,120	14,970	15,430	15,410	15,940
	White	232,400	235,060	209,550	229,130	232,250	235,530	237,770	230,890	222,280	213,770
	Other	2,760	2,960	3,550	3,830	4,190	4,720	5,130	5,590	5,670	6,120

E.12 Placed applicants from England by ethnic group: 1 day after A level results day

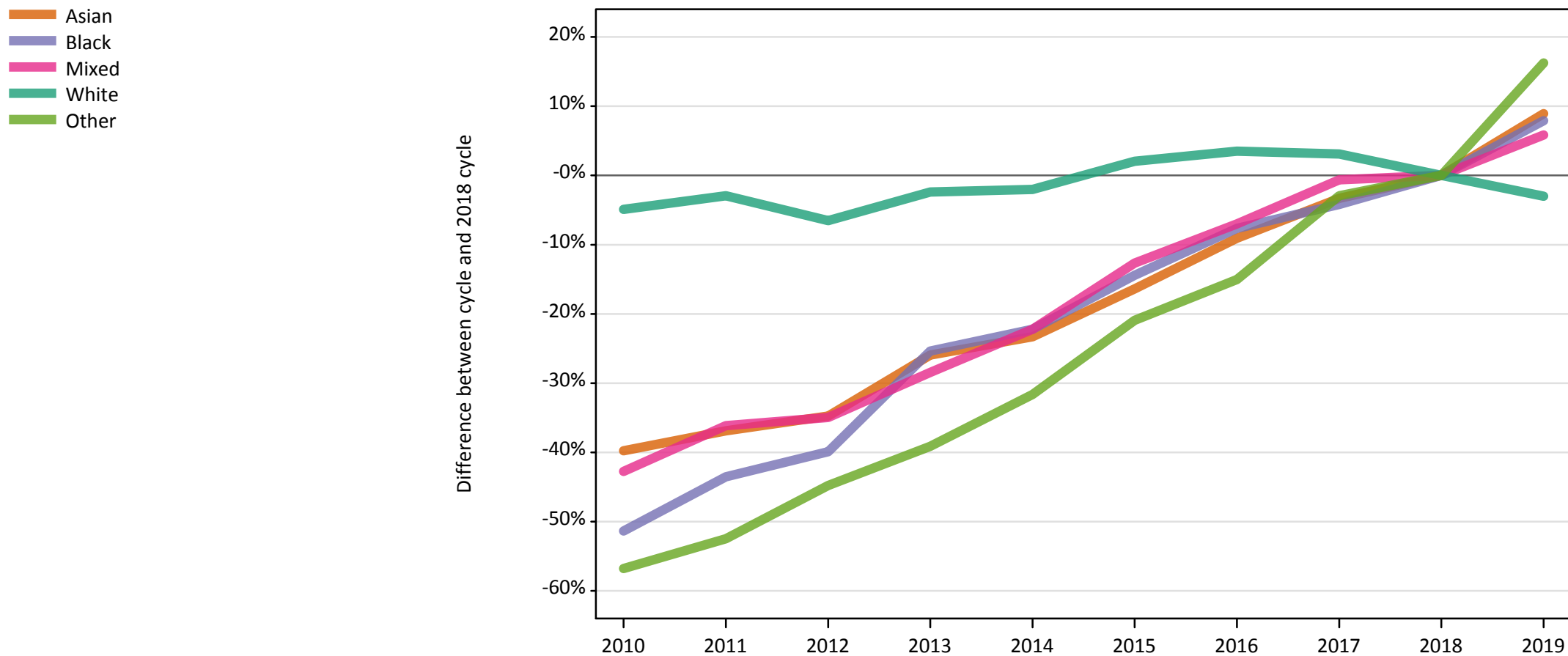
Placed applicants: change relative to 2018 cycle totals

Applicant Status	Ethnic group	2010	2011	2012	2013	2014	2015	2016	2017	2018	2019
Placed	Asian	-31%	-27%	-28%	-18%	-15%	-9%	-2%	-1%	0%	5%
	Black	-30%	-24%	-24%	-15%	-12%	-7%	3%	0%	0%	3%
	Mixed	-32%	-27%	-31%	-22%	-16%	-8%	-3%	0%	0%	3%
	White	5%	6%	-6%	3%	4%	6%	7%	4%	0%	-4%
	Other	-51%	-48%	-37%	-32%	-26%	-17%	-10%	-2%	0%	8%

Note: The percentage change is not recorded in the above table for groups with fewer than 10 placed applicants in that cycle or in the 2018 cycle.

E.13 Placed 18 year old applicants from England by ethnic group: 1 day after A level results day

Placed 18 year old applicants: change relative to 2018 cycle totals



Note: The percentage change is not plotted in the above chart for groups with fewer than 30 placed applicants in any one cycle.

E.14 Placed 18 year old applicants from England by ethnic group: 1 day after A level results day

Applicant Status	Ethnic group	2010	2011	2012	2013	2014	2015	2016	2017	2018	2019
Placed	Asian	14,130	14,810	15,310	17,380	18,000	19,620	21,340	22,690	23,470	25,560
	Black	4,880	5,660	6,030	7,480	7,800	8,580	9,260	9,610	10,030	10,820
	Mixed	5,010	5,590	5,690	6,260	6,810	7,640	8,140	8,700	8,750	9,260
	White	128,070	130,690	125,840	131,410	131,930	137,420	139,380	138,830	134,640	130,600
	Other	1,240	1,360	1,580	1,750	1,960	2,270	2,440	2,790	2,870	3,340

E.15 Placed 18 year old applicants from England by ethnic group: 1 day after A level results day

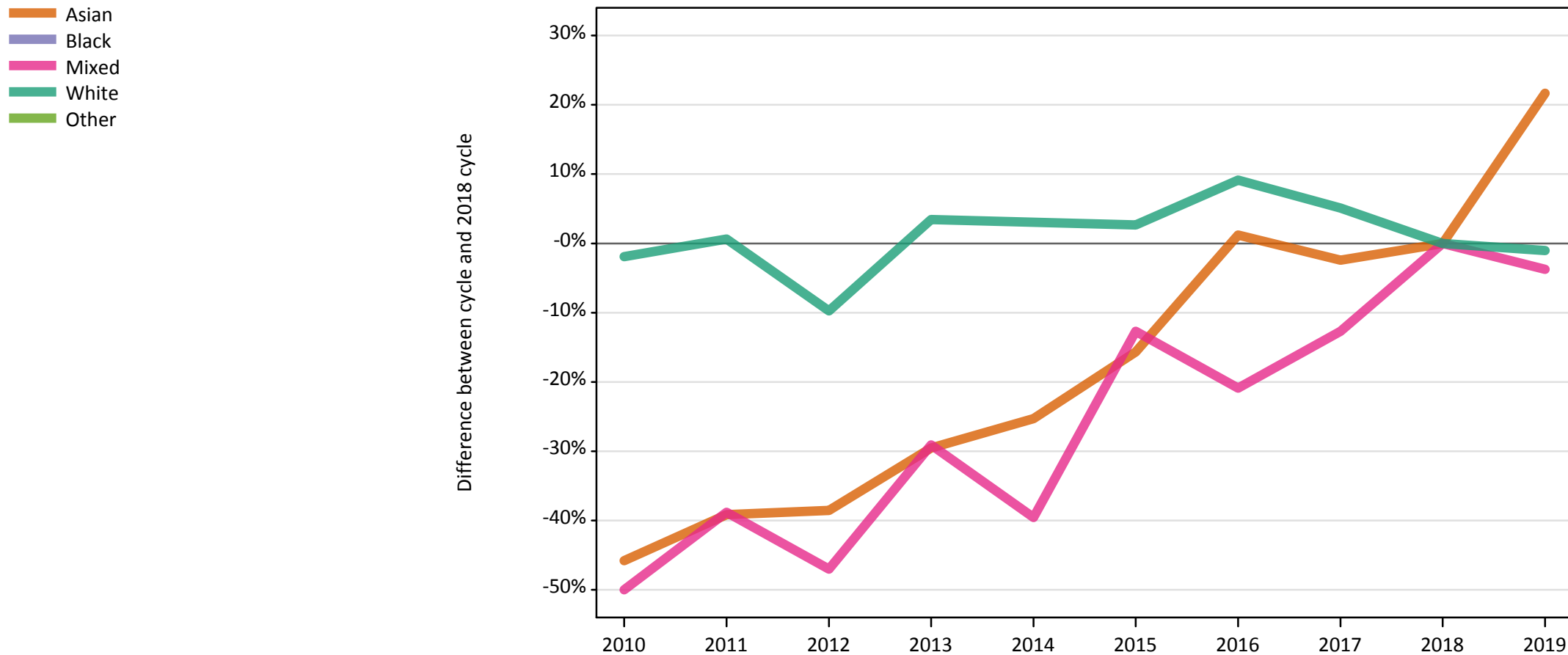
Placed 18 year old applicants: change relative to 2018 cycle totals

Applicant Status	Ethnic group	2010	2011	2012	2013	2014	2015	2016	2017	2018	2019
Placed	Asian	-40%	-37%	-35%	-26%	-23%	-16%	-9%	-3%	0%	9%
	Black	-51%	-44%	-40%	-25%	-22%	-14%	-8%	-4%	0%	8%
	Mixed	-43%	-36%	-35%	-28%	-22%	-13%	-7%	-1%	0%	6%
	White	-5%	-3%	-7%	-2%	-2%	2%	4%	3%	0%	-3%
	Other	-57%	-52%	-45%	-39%	-32%	-21%	-15%	-3%	0%	16%

Note: The percentage change is not recorded in the above table for groups with fewer than 10 placed applicants in that cycle or in the 2018 cycle.

E.16 Placed applicants from Northern Ireland by ethnic group: 1 day after A level results day

Placed applicants: change relative to 2018 cycle totals



Note: The percentage change is not plotted in the above chart for groups with fewer than 30 placed applicants in any one cycle.

E.17 Placed applicants from Northern Ireland by ethnic group: 1 day after A level results day

Applicant Status	Ethnic group	2010	2011	2012	2013	2014	2015	2016	2017	2018	2019
Placed	Asian	90	100	100	120	120	140	170	160	170	200
	Black	20	10	20	20	30	30	50	40	50	50
	Mixed	70	80	70	100	80	120	110	120	130	130
	White	10,940	11,230	10,070	11,540	11,500	11,450	12,180	11,730	11,160	11,040
	Other	10	10	10	10	20	10	10	20	20	20

E.18 Placed applicants from Northern Ireland by ethnic group: 1 day after A level results day

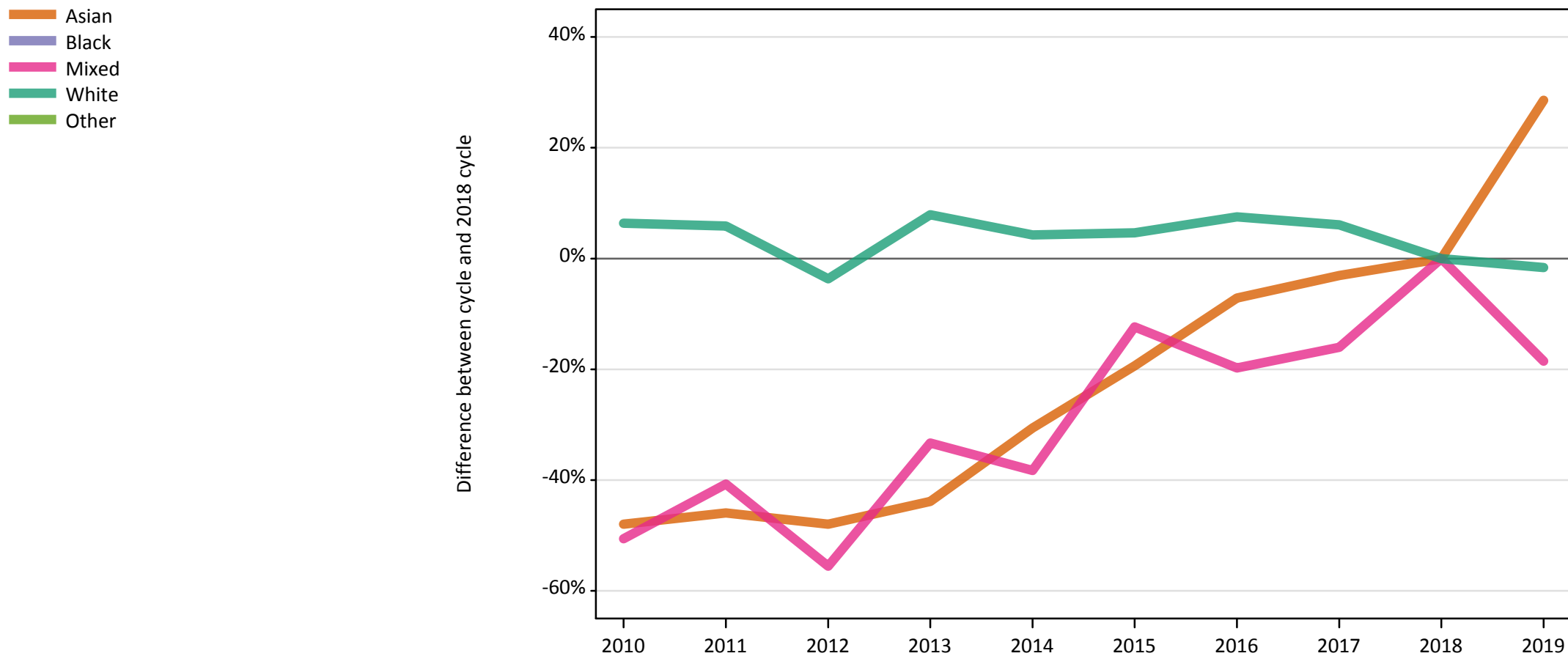
Placed applicants: change relative to 2018 cycle totals

Applicant Status	Ethnic group	2010	2011	2012	2013	2014	2015	2016	2017	2018	2019
Placed	Asian	-46%	-39%	-39%	-30%	-25%	-16%	1%	-2%	0%	22%
	Black	-67%	-76%	-53%	-47%	-24%	-33%	2%	-9%	0%	9%
	Mixed	-50%	-39%	-47%	-29%	-40%	-13%	-21%	-13%	0%	-4%
	White	-2%	1%	-10%	3%	3%	3%	9%	5%	0%	-1%
	Other	-22%		-33%		-17%	-33%	-22%	28%	0%	0%

Note: The percentage change is not recorded in the above table for groups with fewer than 10 placed applicants in that cycle or in the 2018 cycle.

E.19 Placed 18 year old applicants from Northern Ireland by ethnic group: 1 day after A level results day

Placed 18 year old applicants: change relative to 2018 cycle totals



Note: The percentage change is not plotted in the above chart for groups with fewer than 30 placed applicants in any one cycle.

E.20 Placed 18 year old applicants from Northern Ireland by ethnic group: 1 day after A level results day

Applicant Status	Ethnic group	2010	2011	2012	2013	2014	2015	2016	2017	2018	2019
Placed	Asian	50	50	50	60	70	80	90	100	100	130
	Black	0	10	10	10	10	10	10	10	10	20
	Mixed	40	50	40	50	50	70	70	70	80	70
	White	7,080	7,040	6,410	7,180	6,940	6,960	7,150	7,060	6,650	6,550
	Other	10	0	0	0	10	0	10	10	10	10

E.21 Placed 18 year old applicants from Northern Ireland by ethnic group: 1 day after A level results day

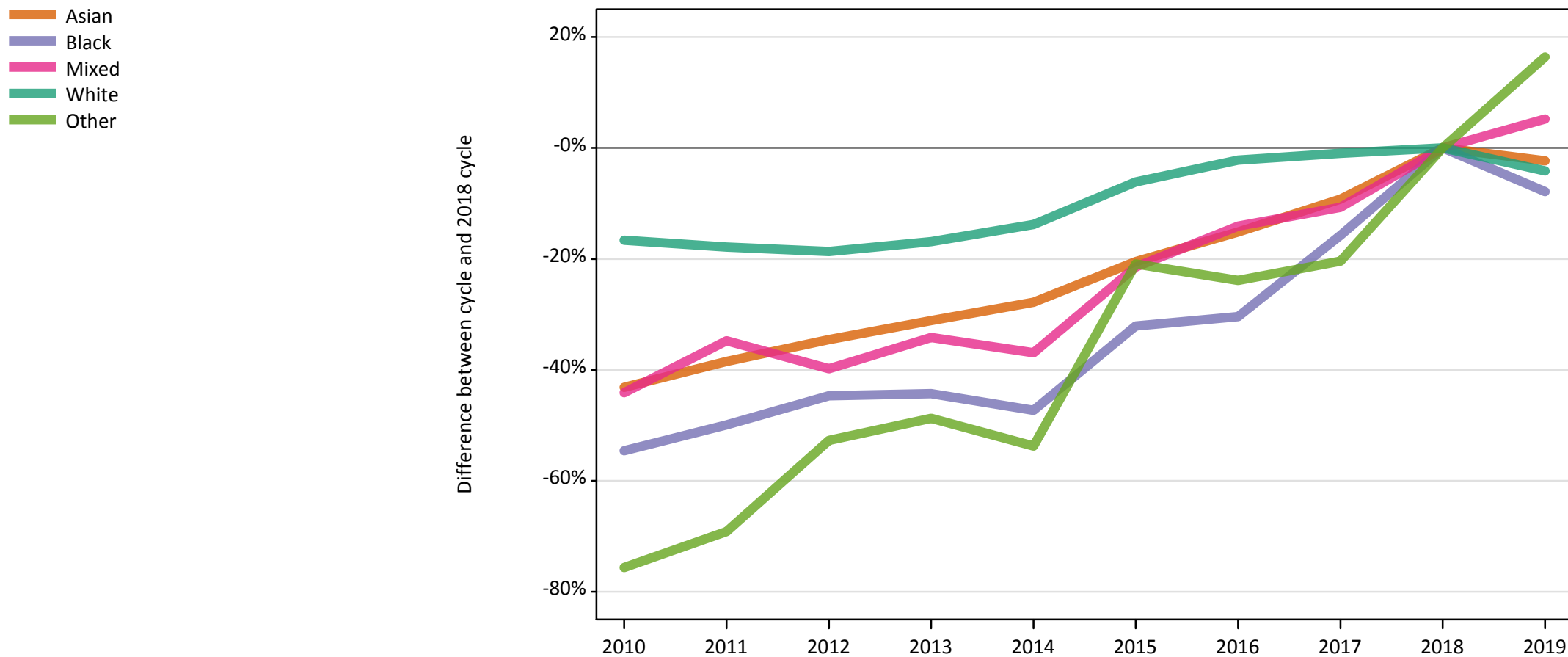
Placed 18 year old applicants: change relative to 2018 cycle totals

Applicant Status	Ethnic group	2010	2011	2012	2013	2014	2015	2016	2017	2018	2019
Placed	Asian	-48%	-46%	-48%	-44%	-31%	-19%	-7%	-3%	0%	29%
	Black				0%	-17%	-8%	17%	0%	0%	42%
	Mixed	-51%	-41%	-56%	-33%	-38%	-12%	-20%	-16%	0%	-19%
	White	6%	6%	-4%	8%	4%	5%	8%	6%	0%	-2%
	Other										

Note: The percentage change is not recorded in the above table for groups with fewer than 10 placed applicants in that cycle or in the 2018 cycle.

E.22 Placed applicants from Scotland by ethnic group: 1 day after A level results day

Placed applicants: change relative to 2018 cycle totals



Note: The percentage change is not plotted in the above chart for groups with fewer than 30 placed applicants in any one cycle.

E.23 Placed applicants from Scotland by ethnic group: 1 day after A level results day

Applicant Status	Ethnic group	2010	2011	2012	2013	2014	2015	2016	2017	2018	2019
Placed	Asian	880	950	1,010	1,060	1,110	1,230	1,310	1,400	1,540	1,510
	Black	240	270	300	300	280	360	370	450	530	490
	Mixed	370	430	390	430	410	510	560	580	650	690
	White	25,200	24,840	24,600	25,130	26,070	28,380	29,580	29,950	30,240	28,990
	Other	50	60	100	100	90	160	150	160	200	230

E.24 Placed applicants from Scotland by ethnic group: 1 day after A level results day

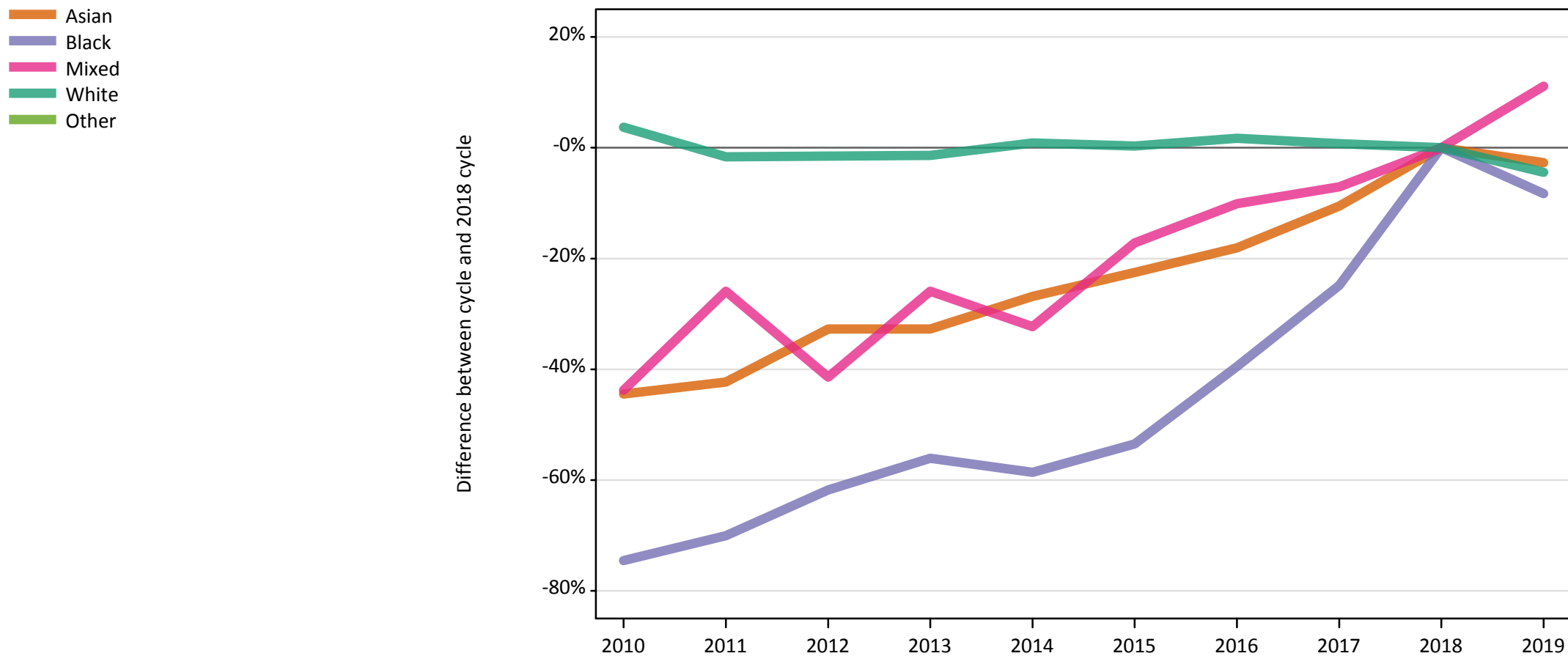
Placed applicants: change relative to 2018 cycle totals

Applicant Status	Ethnic group	2010	2011	2012	2013	2014	2015	2016	2017	2018	2019
Placed	Asian	-43%	-38%	-35%	-31%	-28%	-20%	-15%	-9%	0%	-2%
	Black	-55%	-50%	-45%	-44%	-47%	-32%	-30%	-16%	0%	-8%
	Mixed	-44%	-35%	-40%	-34%	-37%	-21%	-14%	-11%	0%	5%
	White	-17%	-18%	-19%	-17%	-14%	-6%	-2%	-1%	0%	-4%
	Other	-76%	-69%	-53%	-49%	-54%	-21%	-24%	-20%	0%	16%

Note: The percentage change is not recorded in the above table for groups with fewer than 10 placed applicants in that cycle or in the 2018 cycle.

E.25 Placed 18 year old applicants from Scotland by ethnic group: 1 day after A level results day

Placed 18 year old applicants: change relative to 2018 cycle totals



Note: The percentage change is not plotted in the above chart for groups with fewer than 30 placed applicants in any one cycle.

E.26 Placed 18 year old applicants from Scotland by ethnic group: 1 day after A level results day

Applicant Status	Ethnic group	2010	2011	2012	2013	2014	2015	2016	2017	2018	2019
Placed	Asian	410	430	500	500	540	580	610	660	740	720
	Black	40	50	60	70	70	70	100	120	160	140
	Mixed	170	220	170	220	200	250	270	280	300	330
	White	13,600	12,910	12,930	12,940	13,240	13,160	13,350	13,220	13,120	12,540
	Other	20	30	40	40	40	60	60	60	80	80

E.27 Placed 18 year old applicants from Scotland by ethnic group: 1 day after A level results day

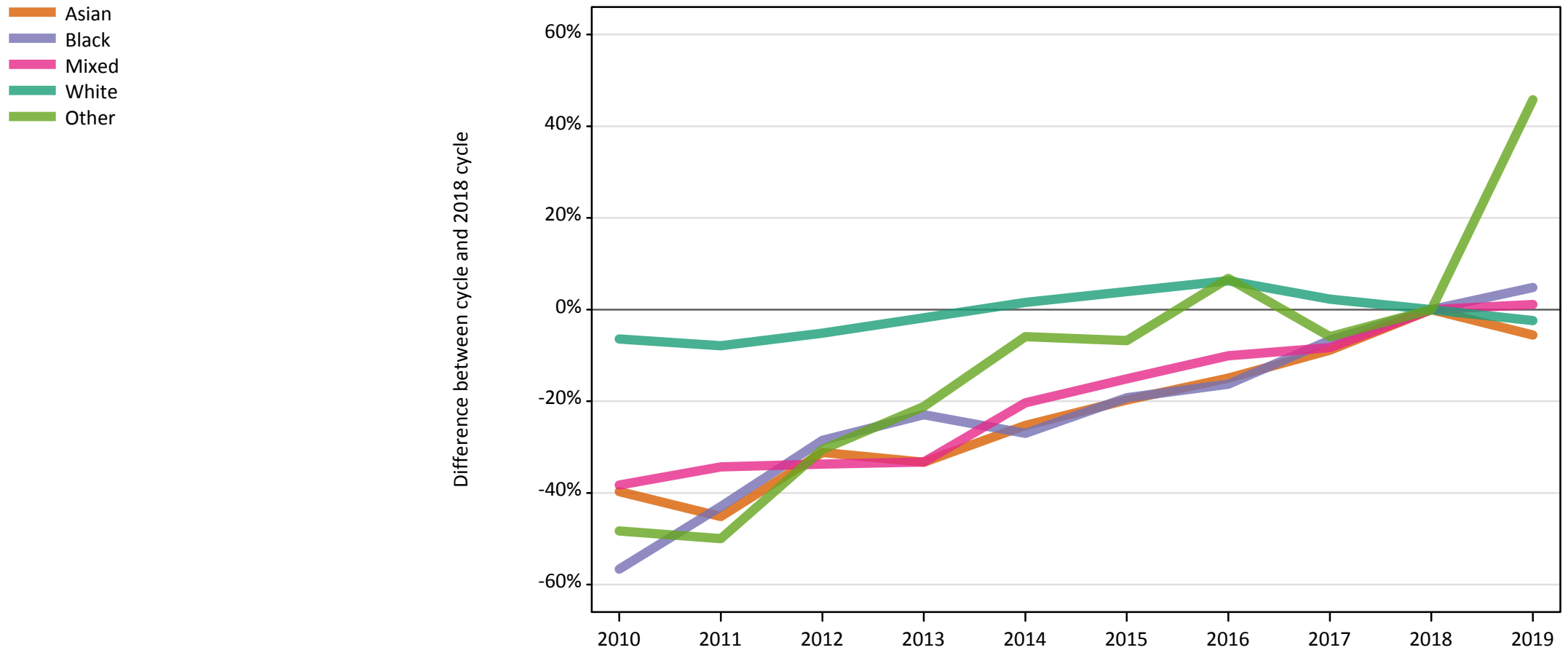
Placed 18 year old applicants: change relative to 2018 cycle totals

Applicant Status	Ethnic group	2010	2011	2012	2013	2014	2015	2016	2017	2018	2019
Placed	Asian	-44%	-42%	-33%	-33%	-27%	-23%	-18%	-11%	0%	-3%
	Black	-75%	-70%	-62%	-56%	-59%	-54%	-39%	-25%	0%	-8%
	Mixed	-44%	-26%	-41%	-26%	-32%	-17%	-10%	-7%	0%	11%
	White	4%	-2%	-1%	-1%	1%	0%	2%	1%	0%	-4%
	Other	-79%	-61%	-53%	-47%	-52%	-19%	-21%	-20%	0%	12%

Note: The percentage change is not recorded in the above table for groups with fewer than 10 placed applicants in that cycle or in the 2018 cycle.

E.28 Placed applicants from Wales by ethnic group: 1 day after A level results day

Placed applicants: change relative to 2018 cycle totals



Note: The percentage change is not plotted in the above chart for groups with fewer than 30 placed applicants in any one cycle.

E.29 Placed applicants from Wales by ethnic group: 1 day after A level results day

Applicant Status	Ethnic group	2010	2011	2012	2013	2014	2015	2016	2017	2018	2019
Placed	Asian	440	400	510	490	550	590	630	670	740	690
	Black	120	150	190	210	200	220	230	250	270	280
	Mixed	280	300	300	310	360	390	410	420	460	460
	White	14,110	13,890	14,310	14,810	15,320	15,680	16,030	15,420	15,080	14,720
	Other	60	60	80	90	110	110	130	110	120	170

E.30 Placed applicants from Wales by ethnic group: 1 day after A level results day

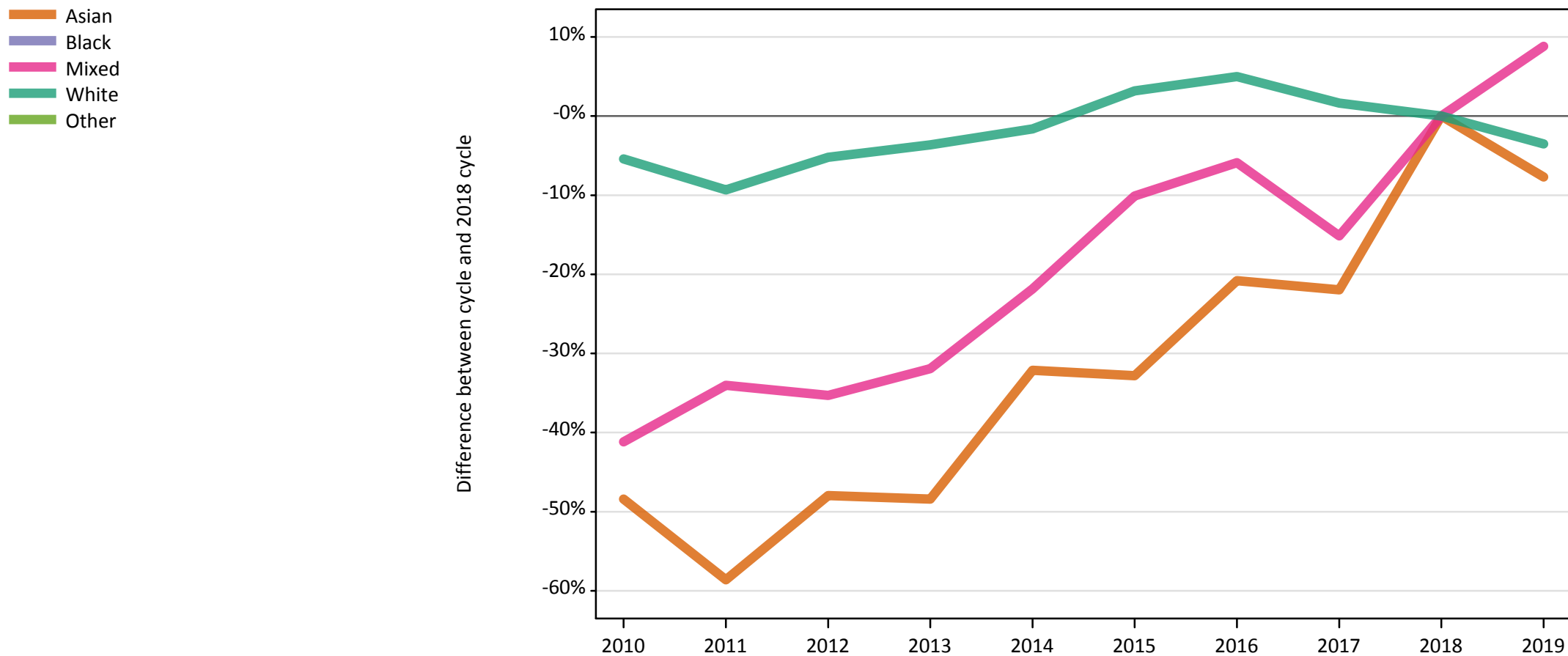
Placed applicants: change relative to 2018 cycle totals

Applicant Status	Ethnic group	2010	2011	2012	2013	2014	2015	2016	2017	2018	2019
Placed	Asian	-40%	-45%	-31%	-33%	-25%	-20%	-15%	-9%	0%	-6%
	Black	-57%	-43%	-29%	-23%	-27%	-19%	-16%	-7%	0%	5%
	Mixed	-38%	-34%	-34%	-33%	-20%	-15%	-10%	-8%	0%	1%
	White	-6%	-8%	-5%	-2%	2%	4%	6%	2%	0%	-2%
	Other	-48%	-50%	-31%	-21%	-6%	-7%	7%	-6%	0%	46%

Note: The percentage change is not recorded in the above table for groups with fewer than 10 placed applicants in that cycle or in the 2018 cycle.

E.31 Placed 18 year old applicants from Wales by ethnic group: 1 day after A level results day

Placed 18 year old applicants: change relative to 2018 cycle totals



Note: The percentage change is not plotted in the above chart for groups with fewer than 30 placed applicants in any one cycle.

E.32 Placed 18 year old applicants from Wales by ethnic group: 1 day after A level results day

Applicant Status	Ethnic group	2010	2011	2012	2013	2014	2015	2016	2017	2018	2019
Placed	Asian	230	180	230	230	300	300	350	350	440	410
	Black	20	30	60	50	60	70	90	80	110	110
	Mixed	140	160	150	160	190	210	220	200	240	260
	White	8,090	7,750	8,100	8,240	8,410	8,820	8,980	8,690	8,550	8,250
	Other	30	30	40	40	50	50	60	50	70	70

E.33 Placed 18 year old applicants from Wales by ethnic group: 1 day after A level results day

Placed 18 year old applicants: change relative to 2018 cycle totals

Applicant Status	Ethnic group	2010	2011	2012	2013	2014	2015	2016	2017	2018	2019
Placed	Asian	-48%	-59%	-48%	-48%	-32%	-33%	-21%	-22%	0%	-8%
	Black	-80%	-71%	-42%	-55%	-44%	-36%	-19%	-22%	0%	4%
	Mixed	-41%	-34%	-35%	-32%	-22%	-10%	-6%	-15%	0%	9%
	White	-5%	-9%	-5%	-4%	-2%	3%	5%	2%	0%	-4%
	Other	-58%	-58%	-48%	-42%	-27%	-28%	-6%	-28%	0%	6%

Note: The percentage change is not recorded in the above table for groups with fewer than 10 placed applicants in that cycle or in the 2018 cycle.