

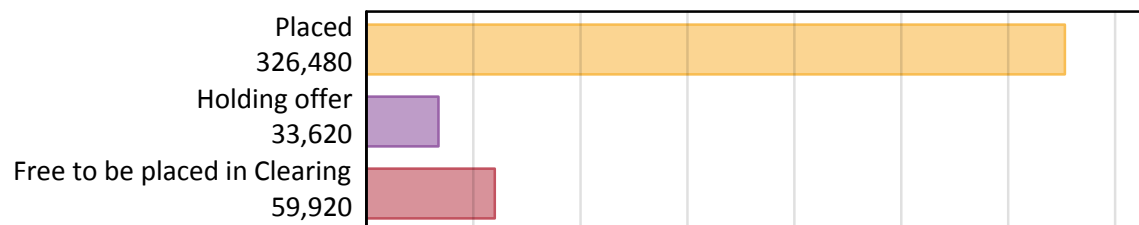
Daily Clearing Analysis: Overview

Analysis at 00:05 on Monday 19 August 2019 (4 days after A level results day)

A.1 Applicants by type and status from England, 2019 cycle

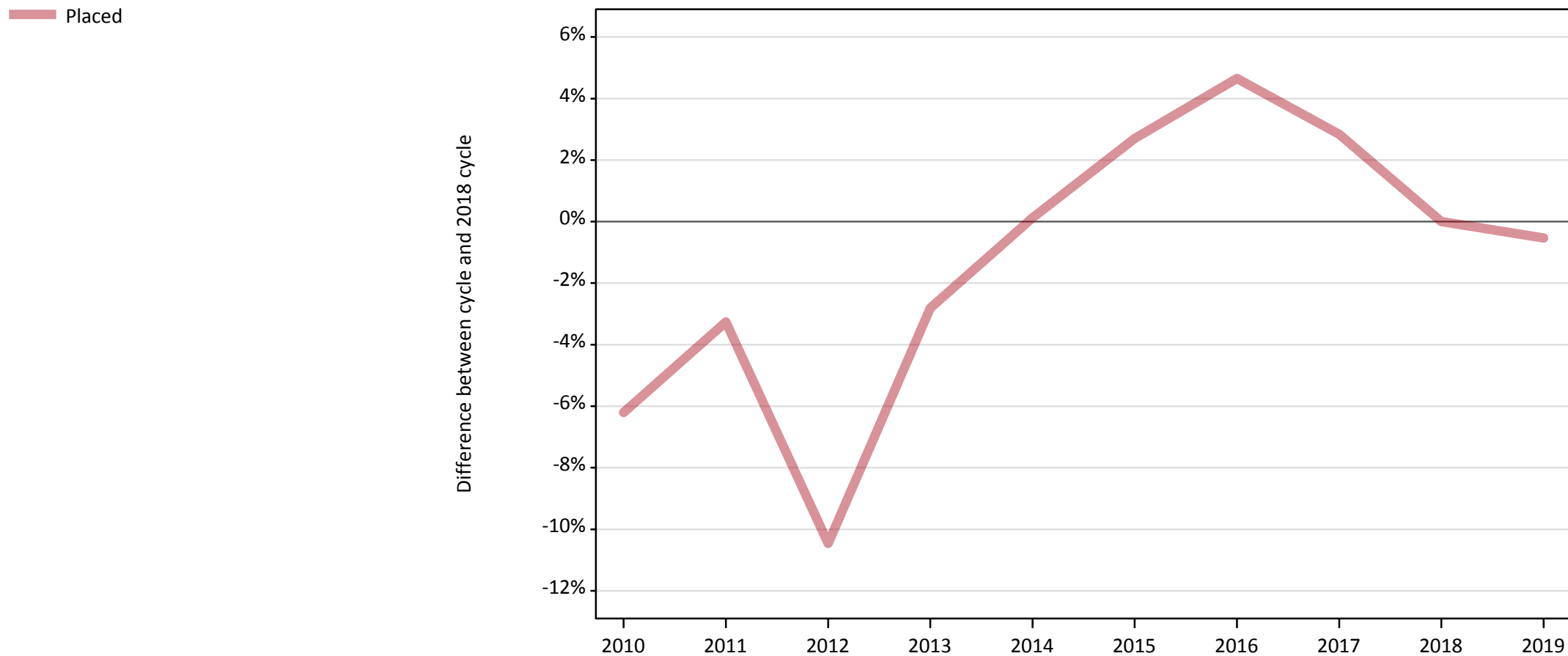
Applicant type	Status	2019
Main scheme	Placed (Clearing)	26,950
	Placed (Adjustment)	400
	Placed (Firm)	261,180
	Placed (Insurance)	24,070
	Placed (Other)	8,670
	Holding offer	33,620
	Free to be placed in Clearing	59,920
Direct to Clearing	Placed (Direct to Clearing)	5,220
	Other (Direct to Clearing)	7,230
All applicants	Placed	326,480

A.2 Summary of applicants who are placed, holding offers or free to be placed in Clearing (England)



A.3 All placed applicants from England: 4 days after A level results day

All placed applicants: difference between cycle and 2018 cycle



Note: The percentage change is not plotted in the above chart for groups with fewer than 30 placed applicants in any one cycle.

A.4 All placed applicants from England: 4 days after A level results day

All placed applicants: applicants at 4 days after A level results day

Applicant type	Status	2010	2011	2012	2013	2014	2015	2016	2017	2018	2019
All applicants	Placed	307,870	317,510	293,890	319,000	328,640	337,090	343,510	337,540	328,230	326,480

A.5 All placed applicants from England: 4 days after A level results day

All placed applicants: difference between cycle and 2018 cycle

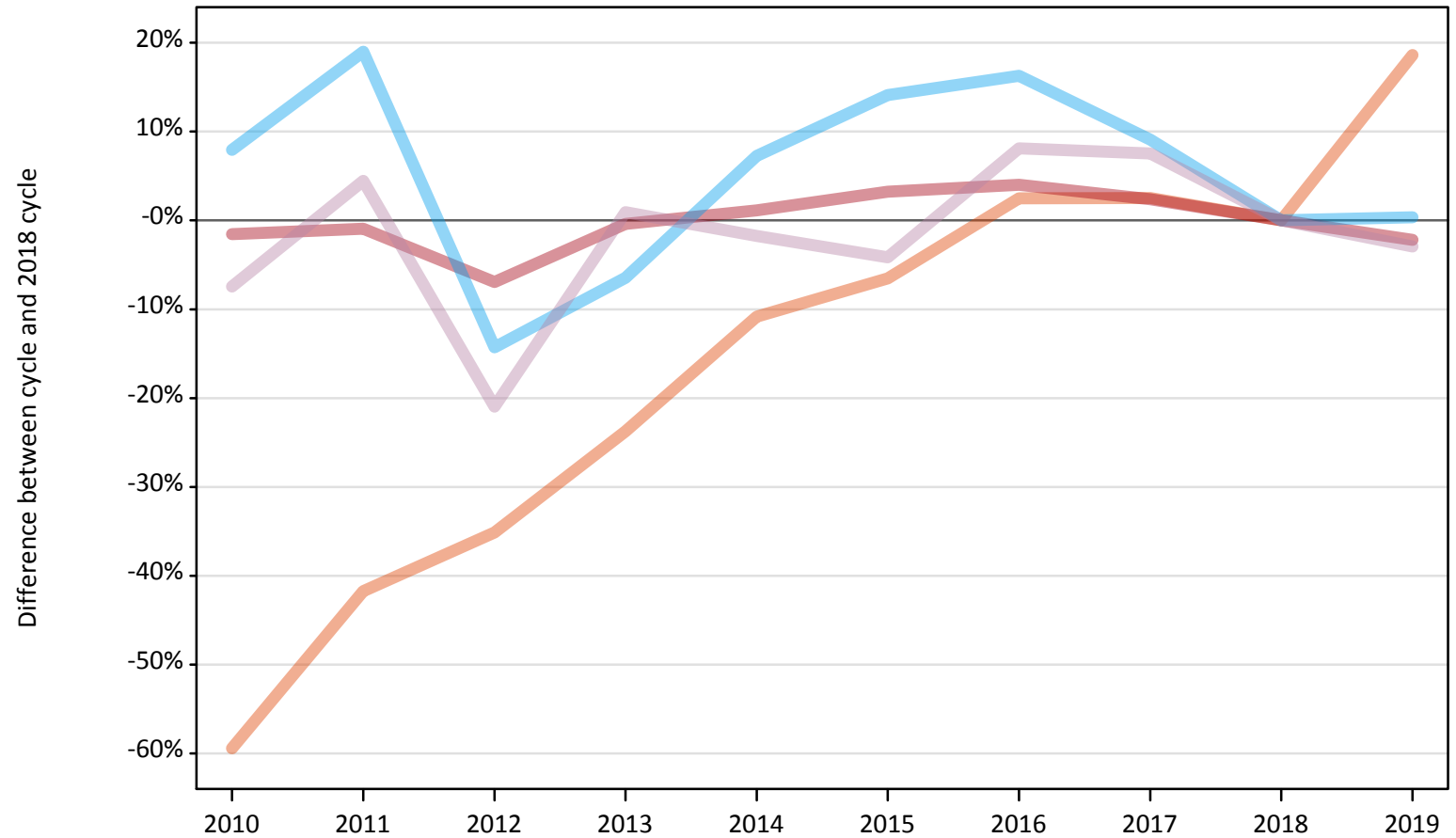
Applicant type	Status	2010	2011	2012	2013	2014	2015	2016	2017	2018	2019
All applicants	Placed	-6%	-3%	-10%	-3%	0%	3%	5%	3%	0%	-1%

Note: The percentage change is not recorded in the above table for groups with fewer than 10 placed applicants in that cycle or in the 2018 cycle.

A.6 Placed main scheme applicants from England: 4 days after A level results day

All Main scheme placed routes (excluding Adjustment): difference between cycle and 2018 cycle

- Placed (Clearing)
- Placed (Firm)
- Placed (Insurance)
- Placed (Other)



Note: The percentage change is not plotted in the above chart for groups with fewer than 30 placed applicants in any one cycle.

A.7 Placed main scheme applicants from England: 4 days after A level results day

All Main scheme placed routes (excluding Adjustment): applicants at 4 days after A level results day

Applicant type	Status	2010	2011	2012	2013	2014	2015	2016	2017	2018	2019
Main scheme	Placed (Clearing)	9,220	13,240	14,740	17,320	20,260	21,230	23,280	23,290	22,720	26,950
	Placed (Firm)	262,840	264,440	248,480	265,890	270,030	275,650	277,650	273,350	266,980	261,180
	Placed (Insurance)	25,890	28,540	20,560	22,440	25,730	27,370	27,890	26,170	23,990	24,070
	Placed (Other)	8,270	9,330	7,060	9,020	8,780	8,560	9,660	9,610	8,940	8,670

A.8 Placed main scheme applicants from England: 4 days after A level results day

All Main scheme placed routes (excluding Adjustment): difference between cycle and 2018 cycle

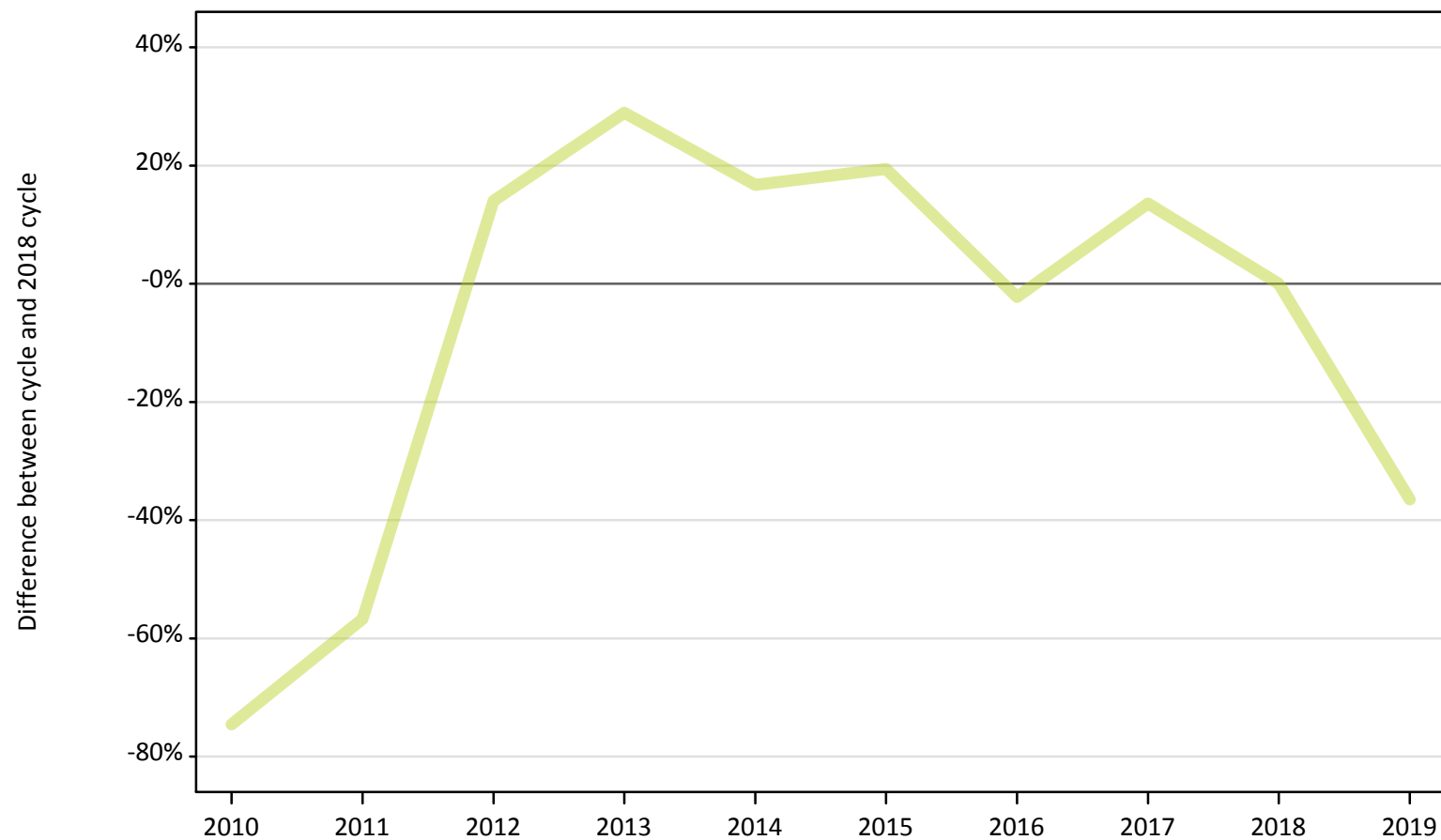
Applicant type	Status	2010	2011	2012	2013	2014	2015	2016	2017	2018	2019
Main scheme	Placed (Clearing)	-59%	-42%	-35%	-24%	-11%	-7%	2%	3%	0%	19%
	Placed (Firm)	-2%	-1%	-7%	-0%	1%	3%	4%	2%	0%	-2%
	Placed (Insurance)	8%	19%	-14%	-6%	7%	14%	16%	9%	0%	0%
	Placed (Other)	-7%	4%	-21%	1%	-2%	-4%	8%	8%	0%	-3%

Note: The percentage change is not recorded in the above table for groups with fewer than 10 placed applicants in that cycle or in the 2018 cycle.

A.9 Main scheme applicants placed through adjustment: 4 days after A level results day

Placed through adjustment: difference between cycle and 2018 cycle

Placed (Adjustment)



Note: The percentage change is not plotted in the above chart for groups with fewer than 30 placed applicants in any one cycle.

A.10 Main scheme applicants placed through adjustment: 4 days after A level results day

Placed through adjustment: applicants at 4 days after A level results day

Applicant type	Status	2010	2011	2012	2013	2014	2015	2016	2017	2018	2019
Main scheme	Placed (Adjustment)	160	270	720	820	740	760	620	720	630	400

A.11 Main scheme applicants placed through adjustment: 4 days after A level results day

Placed through adjustment: difference between cycle and 2018 cycle

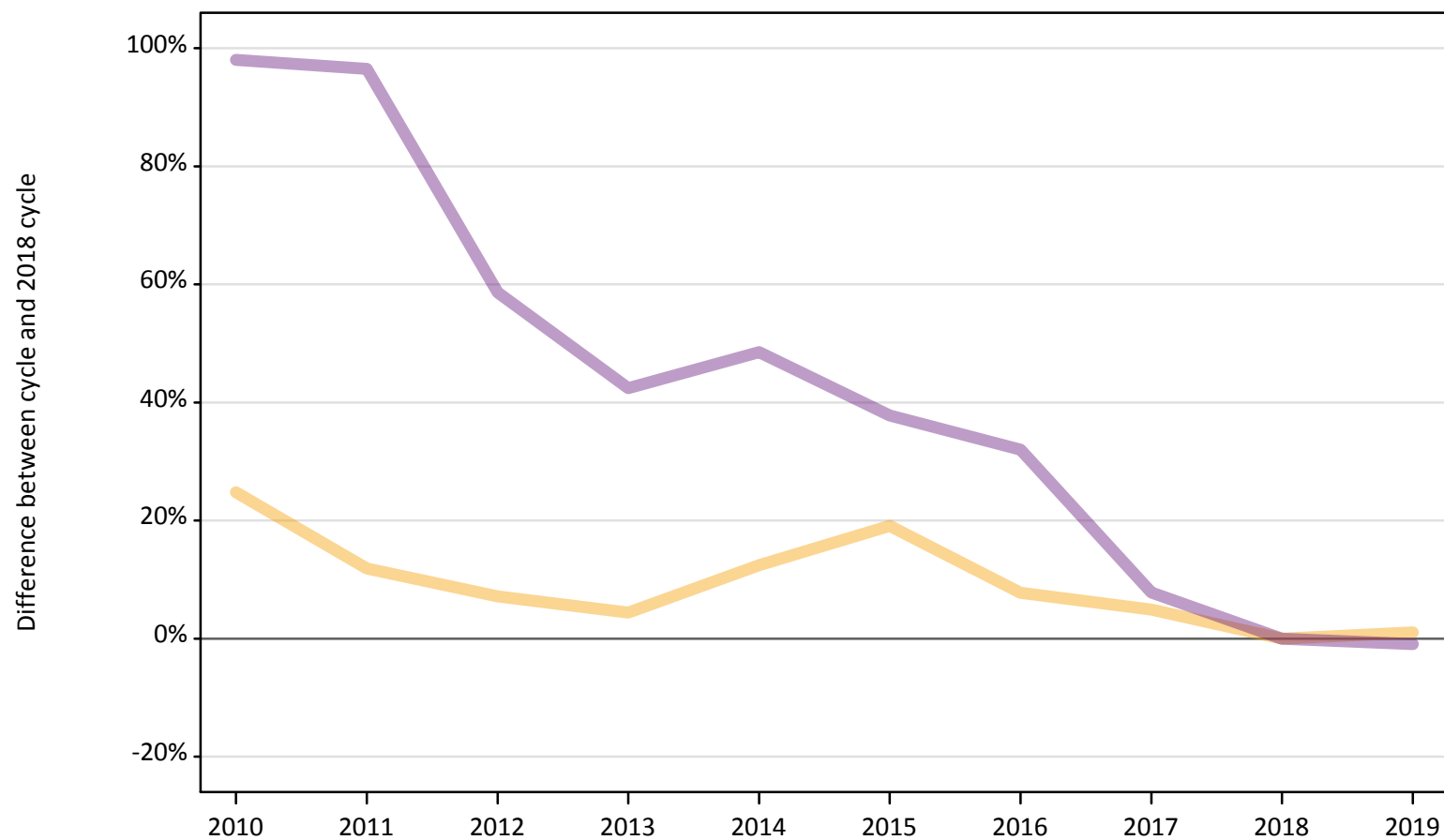
Applicant type	Status	2010	2011	2012	2013	2014	2015	2016	2017	2018	2019
Main scheme	Placed (Adjustment)	-75%	-57%	14%	29%	17%	19%	-2%	14%	0%	-36%

Note: The percentage change is not recorded in the above table for groups with fewer than 10 placed applicants in that cycle or in the 2018 cycle.

A.12 Main scheme applicants not currently placed from England: 4 days after A level results day

Applicants in unplaced states: difference between cycle and 2018 cycle

— Holding offer
— Free to be placed in Clearing



Note: The percentage change is not plotted in the above chart for groups with fewer than 30 unplaced applicants in any one cycle.

A.13 Main scheme applicants not currently placed from England: 4 days after A level results day

Applicants in unplaced states: applicants at 4 days after A level results day

Applicant type	Status	2010	2011	2012	2013	2014	2015	2016	2017	2018	2019
Main scheme	Holding offer	41,520	37,230	35,650	34,730	37,400	39,620	35,840	34,910	33,270	33,620
	Free to be placed in Clearing	119,770	118,850	95,960	86,160	89,830	83,340	79,840	65,210	60,490	59,920

A.14 Main scheme applicants not currently placed from England: 4 days after A level results day

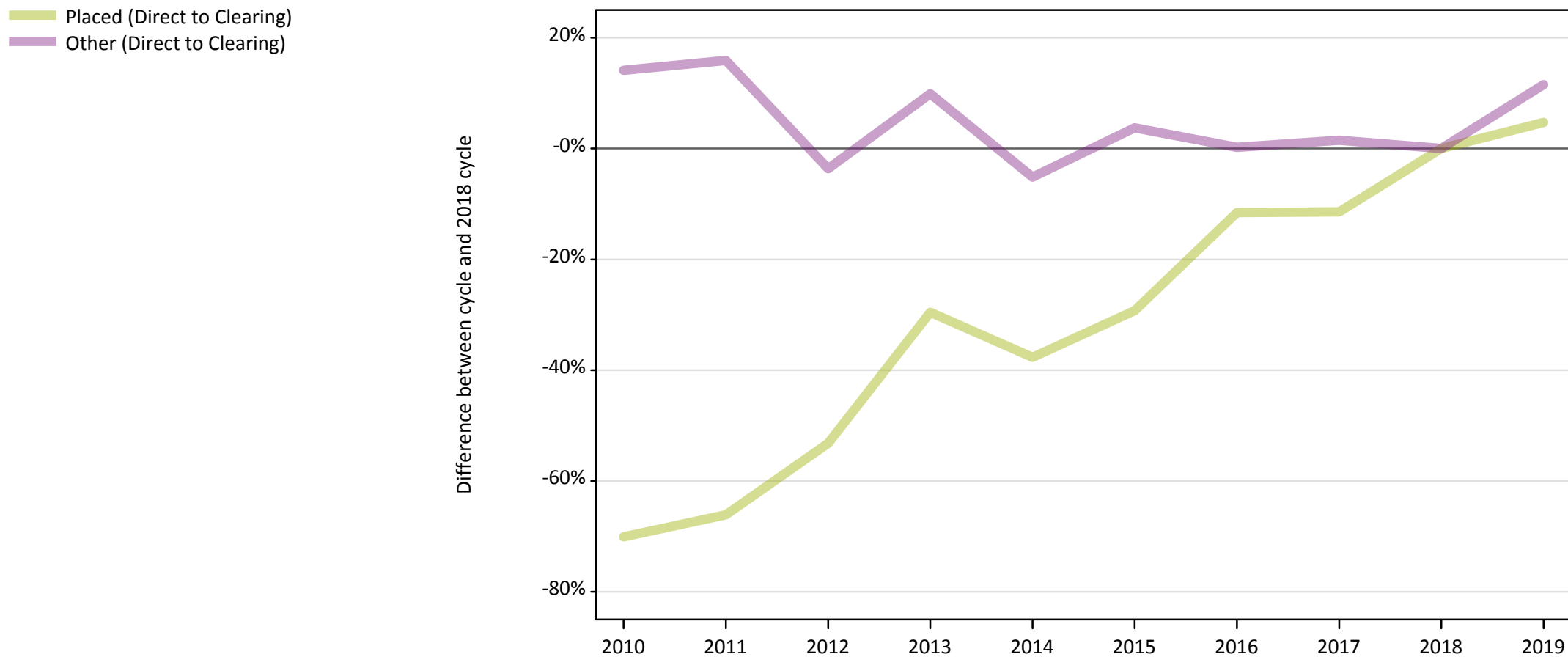
Applicants in unplaced states: difference between cycle and 2018 cycle

Applicant type	Status	2010	2011	2012	2013	2014	2015	2016	2017	2018	2019
Main scheme	Holding offer	25%	12%	7%	4%	12%	19%	8%	5%	0%	1%
	Free to be placed in Clearing	98%	96%	59%	42%	49%	38%	32%	8%	0%	-1%

Note: The percentage change is not recorded in the above table for groups with fewer than 10 unplaced applicants in that cycle or in the 2018 cycle.

A.15 Direct to Clearing applicants from England: 4 days after A level results day

Direct to Clearing: difference between cycle and 2018 cycle



Note: The percentage change is not plotted in the above chart for groups with fewer than 30 placed applicants in any one cycle.

A.16 Direct to Clearing applicants from England: 4 days after A level results day

Direct to Clearing 4 days after A level results day

Applicant type	Status	2010	2011	2012	2013	2014	2015	2016	2017	2018	2019
Direct to Clearing	Placed (Direct to Clearing)	1,490	1,690	2,330	3,510	3,100	3,520	4,410	4,410	4,980	5,220
	Other (Direct to Clearing)	7,400	7,520	6,250	7,130	6,150	6,730	6,500	6,580	6,490	7,230

A.17 Direct to Clearing applicants from England: 4 days after A level results day

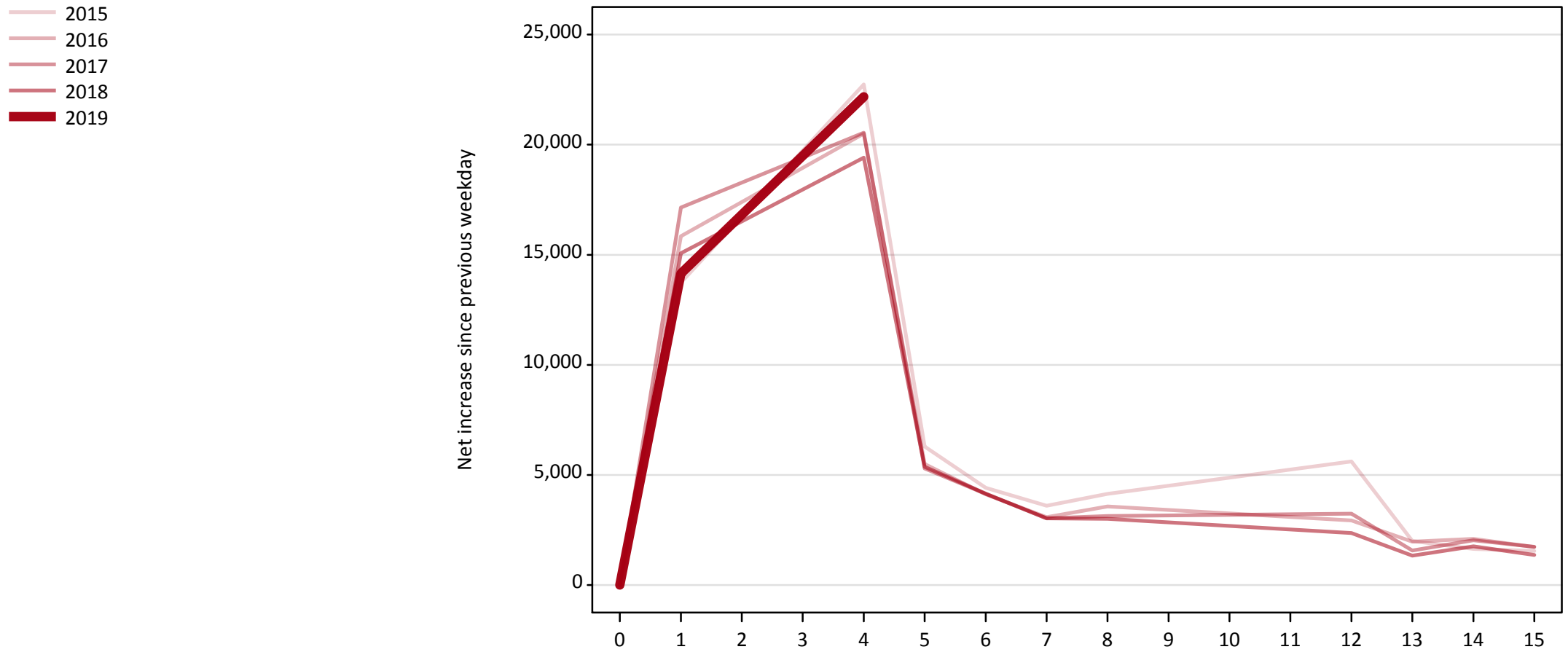
Direct to Clearing: difference between cycle and 2018 cycle

Applicant type	Status	2010	2011	2012	2013	2014	2015	2016	2017	2018	2019
Direct to Clearing	Placed (Direct to Clearing)	-70%	-66%	-53%	-30%	-38%	-29%	-12%	-11%	0%	5%
	Other (Direct to Clearing)	14%	16%	-4%	10%	-5%	4%	0%	1%	0%	12%

Note: The percentage change is not recorded in the above table for groups with fewer than 10 placed applicants in that cycle or in the 2018 cycle.

A.18 All Placed: Daily net change (from England)

Net increase since previous weekday (2019 cycle up to 4 days after A level results day)

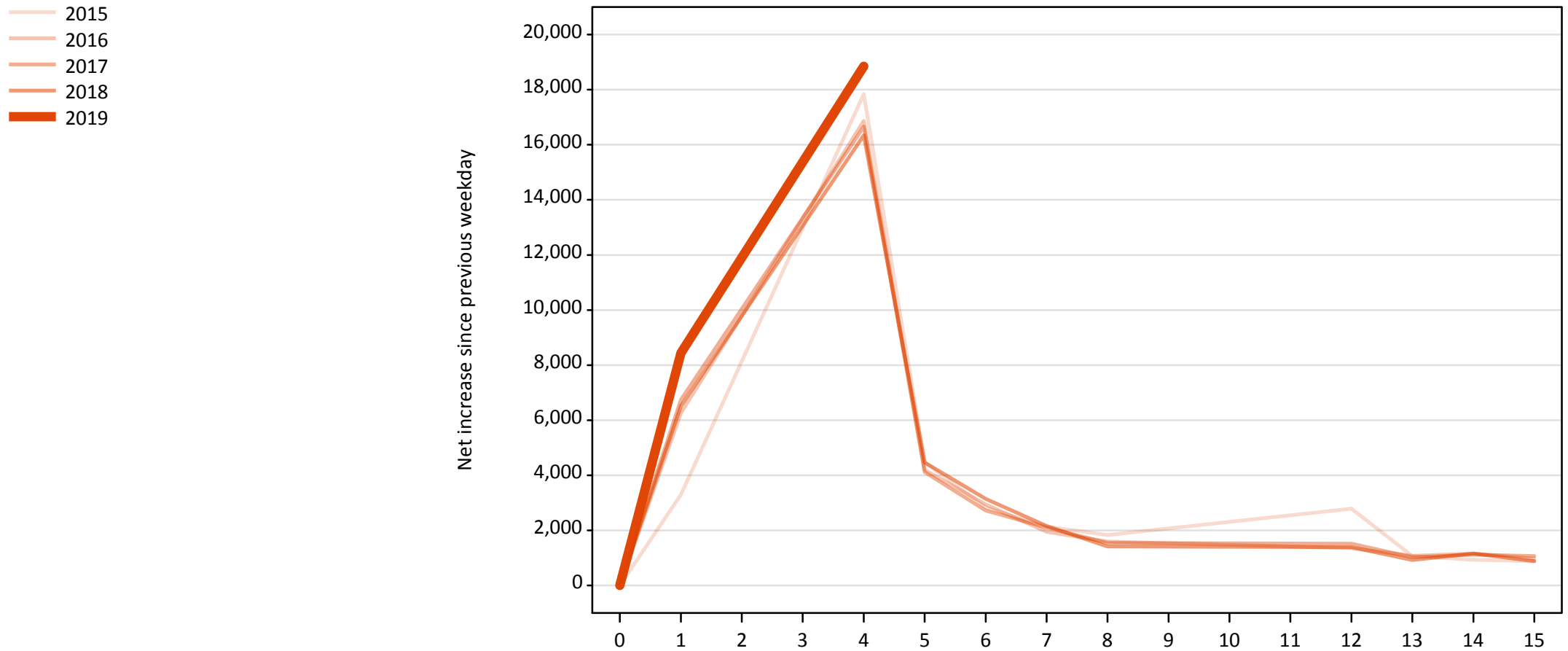


A.19 All Placed: Daily net change (from England)

Net increase since previous weekday (2019 cycle up to 4 days after A level results day)

Applicant status, days since A level results day	2015	2016	2017	2018	2019	
All Placed	0	0	0	0	0	
	1	13,730	15,840	17,150	15,070	14,150
	4	22,730	20,500	20,540	19,410	22,170
	5	6,300	5,500	5,300	5,370	
	6	4,410	4,120	4,140	4,150	
	7	3,600	3,080	3,030	3,030	
	8	4,140	3,570	3,130	3,010	
	12	5,610	2,940	3,240	2,360	
	13	2,000	1,970	1,560	1,340	
	14	1,640	2,100	2,030	1,760	
	15	1,540	1,730	1,740	1,360	

A.20 Placed through Clearing only: Daily net change (from England)
Net increase since previous weekday (2019 cycle up to 4 days after A level results day)



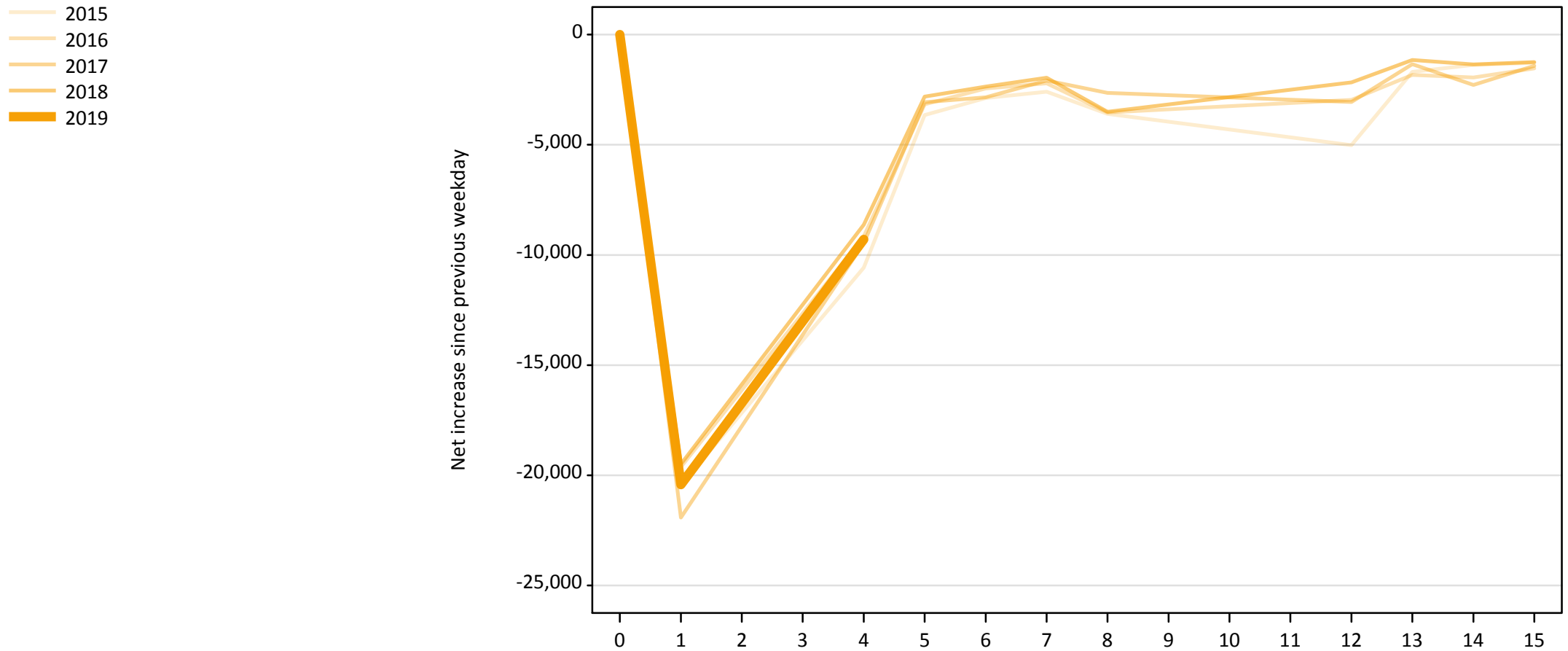
A.21 Placed through Clearing only: Daily net change (from England)

Net increase since previous weekday (2019 cycle up to 4 days after A level results day)

Applicant status, days since A level results day		2015	2016	2017	2018	2019
Placed through Clearing only	0	0	0	0	0	0
	1	3,300	6,260	6,740	6,510	8,440
	4	17,850	16,870	16,660	16,340	18,850
	5	4,470	4,190	4,120	4,470	
	6	2,830	2,940	2,720	3,150	
	7	2,140	1,950	2,100	2,160	
	8	1,830	1,590	1,540	1,410	
	12	2,790	1,360	1,510	1,390	
	13	1,060	1,080	1,020	920	
	14	930	1,160	1,120	1,160	
	15	880	970	1,060	880	

A.22 Holding Offer: Daily net change (from England)

Net increase since previous weekday (2019 cycle up to 4 days after A level results day)

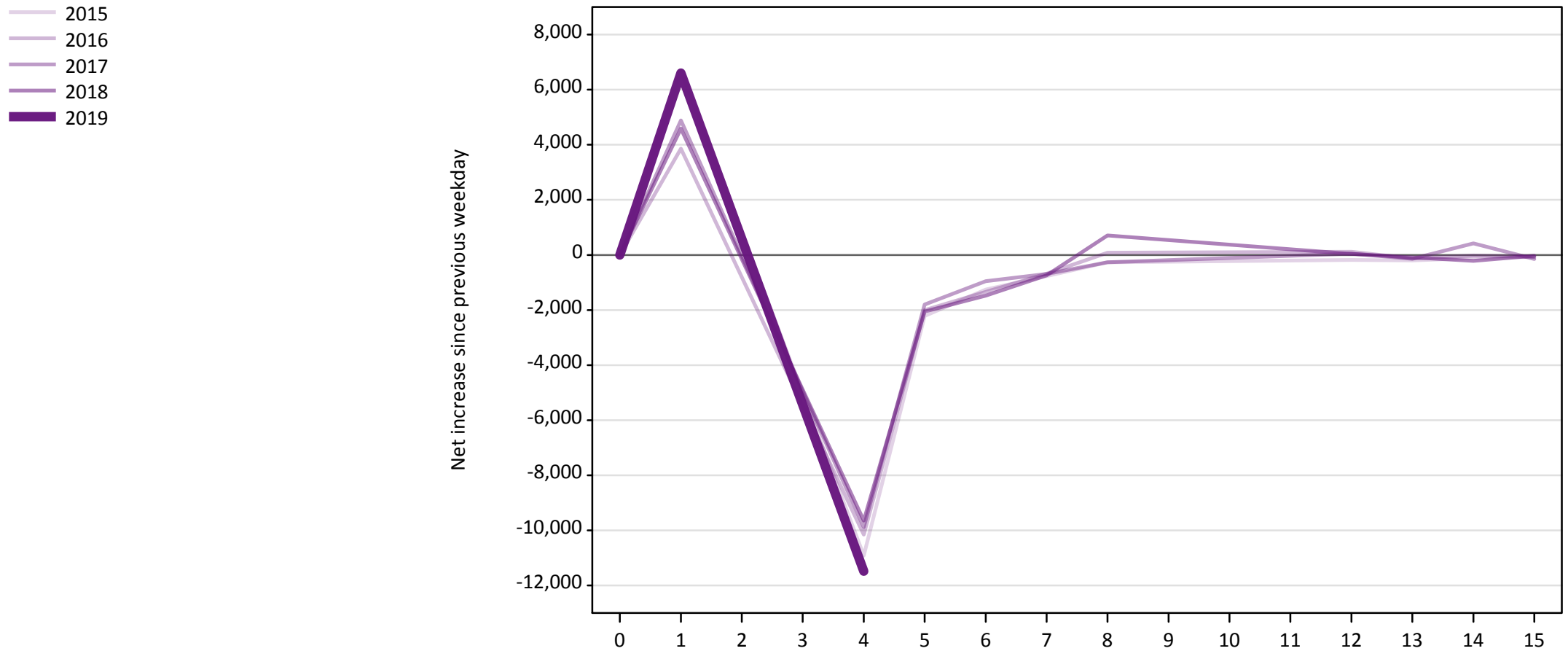


A.23 Holding Offer: Daily net change (from England)

Net increase since previous weekday (2019 cycle up to 4 days after A level results day)

Applicant status, days since A level results day		2015	2016	2017	2018	2019
Holding Offer	0	0	0	0	0	0
	1	-20,460	-19,620	-21,920	-19,500	-20,430
	4	-10,580	-9,160	-9,470	-8,630	-9,300
	5	-3,660	-3,160	-3,060	-2,820	
	6	-2,870	-2,450	-2,840	-2,360	
	7	-2,590	-2,210	-2,080	-1,960	
	8	-3,590	-3,540	-2,650	-3,510	
	12	-5,010	-2,970	-3,060	-2,170	
	13	-1,690	-1,830	-1,340	-1,160	
	14	-1,370	-1,950	-2,290	-1,360	
	15	-1,280	-1,530	-1,420	-1,240	

A.24 Free to be placed in Clearing: Daily net change (from England)
Net increase since previous weekday (2019 cycle up to 4 days after A level results day)



A.25 Free to be placed in Clearing: Daily net change (from England)

Net increase since previous weekday (2019 cycle up to 4 days after A level results day)

Applicant status, days since A level results day		2015	2016	2017	2018	2019
Free to be placed in Clearing	0	0	0	0	0	0
	1	6,690	3,860	4,890	4,590	6,600
	4	-10,920	-10,160	-9,880	-9,640	-11,480
	5	-2,220	-2,000	-1,800	-2,050	
	6	-1,260	-1,340	-950	-1,480	
	7	-770	-680	-690	-740	
	8	-270	80	-270	710	
	12	-190	110	50	40	
	13	-200	-130	-140	-90	
	14	-120	-20	420	-220	
	15	-70	-70	-150	-30	