

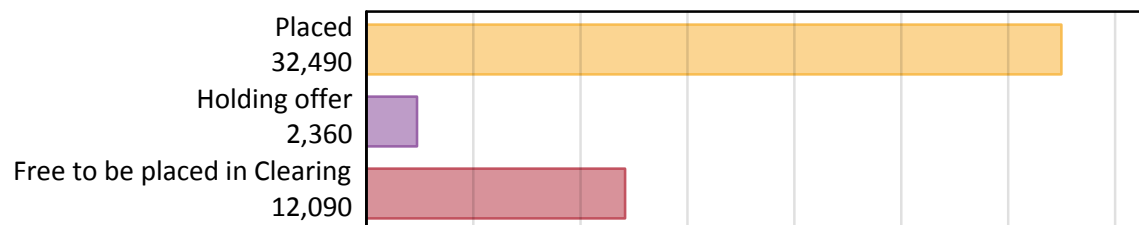
Daily Clearing Analysis: Overview

Analysis at 00:05 on Monday 19 August 2019 (4 days after A level results day)

A.1 Applicants by type and status from Scotland, 2019 cycle

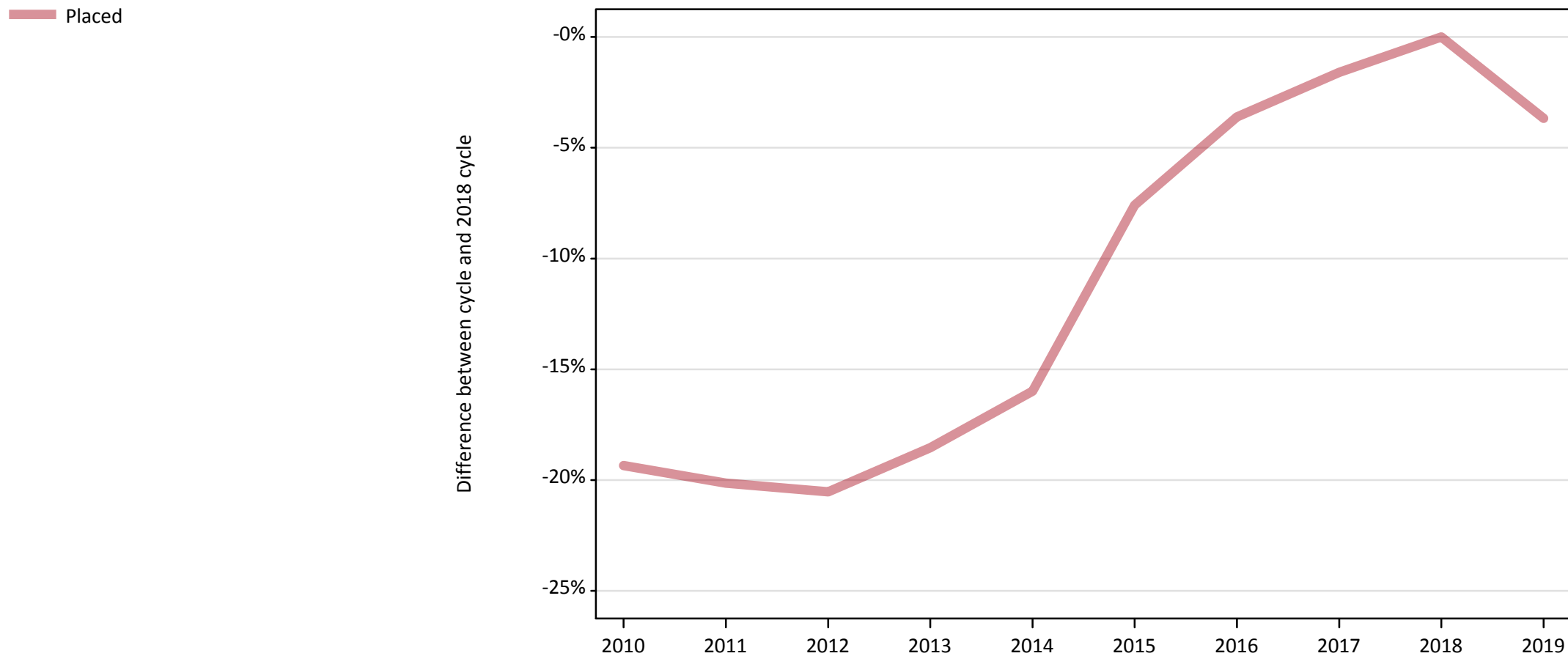
Applicant type	Status	2019
Main scheme	Placed (Clearing)	890
	Placed (Adjustment)	0
	Placed (Firm)	29,550
	Placed (Insurance)	1,240
	Placed (Other)	560
	Holding offer	2,360
	Free to be placed in Clearing	12,090
Direct to Clearing	Placed (Direct to Clearing)	250
	Other (Direct to Clearing)	450
All applicants	Placed	32,490

A.2 Summary of applicants who are placed, holding offers or free to be placed in Clearing (Scotland)



A.3 All placed applicants from Scotland: 4 days after A level results day

All placed applicants: difference between cycle and 2018 cycle



Note: The percentage change is not plotted in the above chart for groups with fewer than 30 placed applicants in any one cycle.

A.4 All placed applicants from Scotland: 4 days after A level results day

All placed applicants: applicants at 4 days after A level results day

Applicant type	Status	2010	2011	2012	2013	2014	2015	2016	2017	2018	2019
All applicants	Placed	27,200	26,940	26,810	27,480	28,340	31,170	32,510	33,190	33,730	32,490

A.5 All placed applicants from Scotland: 4 days after A level results day

All placed applicants: difference between cycle and 2018 cycle

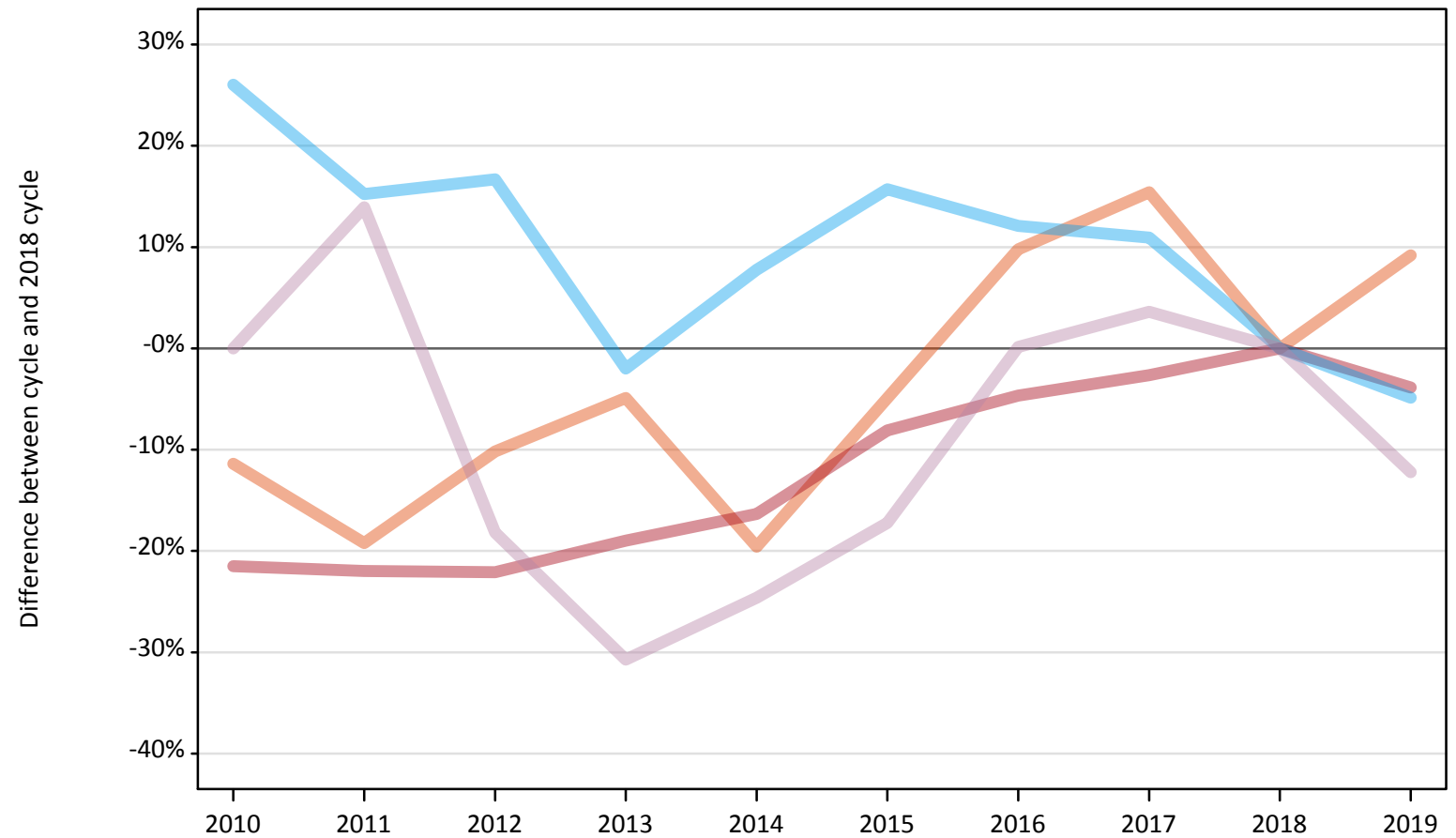
Applicant type	Status	2010	2011	2012	2013	2014	2015	2016	2017	2018	2019
All applicants	Placed	-19%	-20%	-21%	-19%	-16%	-8%	-4%	-2%	0%	-4%

Note: The percentage change is not recorded in the above table for groups with fewer than 10 placed applicants in that cycle or in the 2018 cycle.

A.6 Placed main scheme applicants from Scotland: 4 days after A level results day

All Main scheme placed routes (excluding Adjustment): difference between cycle and 2018 cycle

- Placed (Clearing)
- Placed (Firm)
- Placed (Insurance)
- Placed (Other)



Note: The percentage change is not plotted in the above chart for groups with fewer than 30 placed applicants in any one cycle.

A.7 Placed main scheme applicants from Scotland: 4 days after A level results day

All Main scheme placed routes (excluding Adjustment): applicants at 4 days after A level results day

Applicant type	Status	2010	2011	2012	2013	2014	2015	2016	2017	2018	2019
Main scheme	Placed (Clearing)	720	660	730	780	660	780	900	940	820	890
	Placed (Firm)	24,130	23,980	23,950	24,900	25,720	28,250	29,310	29,930	30,740	29,550
	Placed (Insurance)	1,640	1,500	1,520	1,270	1,400	1,500	1,460	1,440	1,300	1,240
	Placed (Other)	640	730	520	440	480	530	640	660	640	560

A.8 Placed main scheme applicants from Scotland: 4 days after A level results day

All Main scheme placed routes (excluding Adjustment): difference between cycle and 2018 cycle

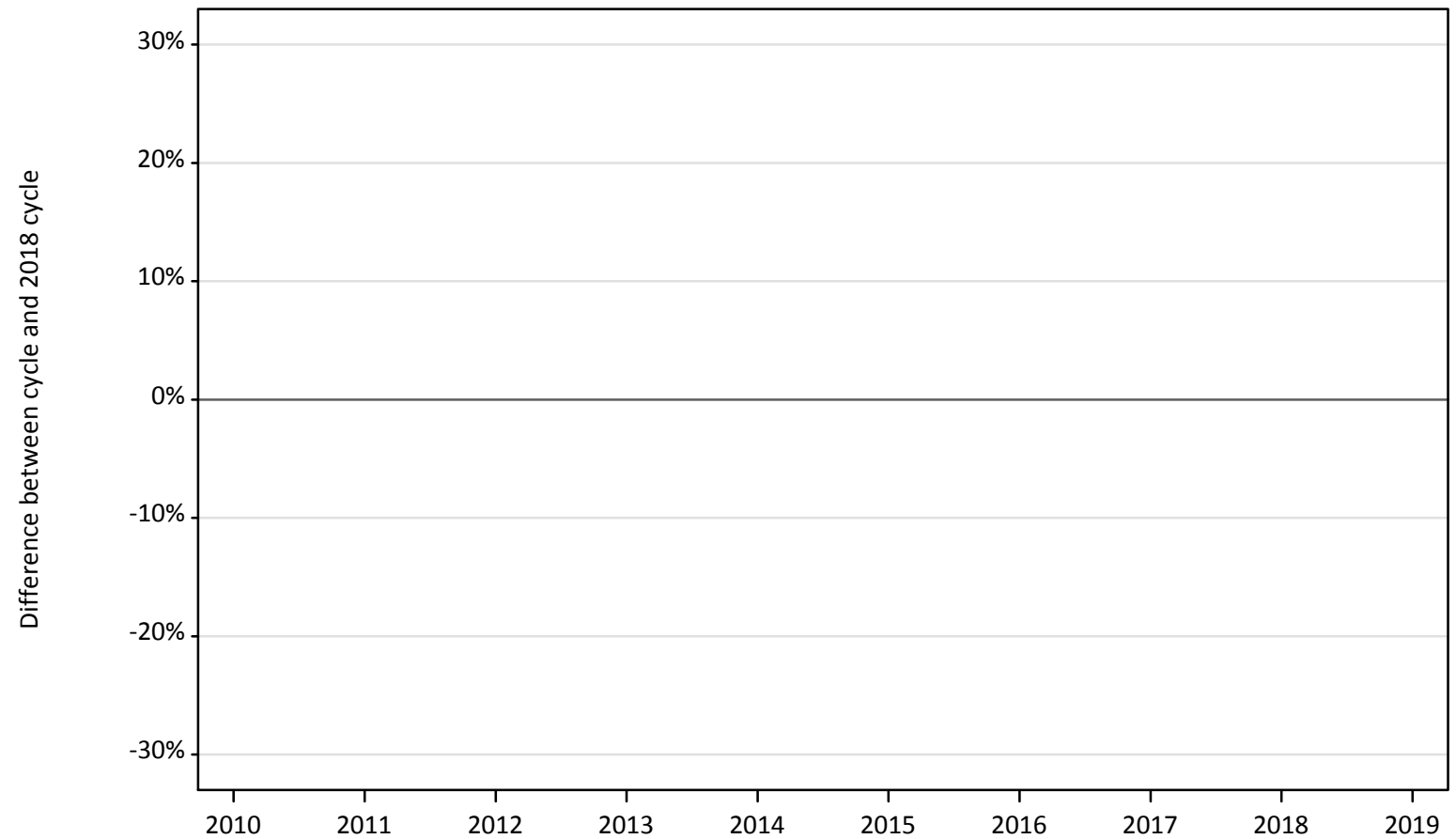
Applicant type	Status	2010	2011	2012	2013	2014	2015	2016	2017	2018	2019
Main scheme	Placed (Clearing)	-11%	-19%	-10%	-5%	-20%	-5%	10%	15%	0%	9%
	Placed (Firm)	-22%	-22%	-22%	-19%	-16%	-8%	-5%	-3%	0%	-4%
	Placed (Insurance)	26%	15%	17%	-2%	8%	16%	12%	11%	0%	-5%
	Placed (Other)	0%	14%	-18%	-31%	-25%	-17%	0%	4%	0%	-12%

Note: The percentage change is not recorded in the above table for groups with fewer than 10 placed applicants in that cycle or in the 2018 cycle.

A.9 Main scheme applicants placed through adjustment: 4 days after A level results day

Placed through adjustment: difference between cycle and 2018 cycle

Placed (Adjustment)



Note: The percentage change is not plotted in the above chart for groups with fewer than 30 placed applicants in any one cycle.

A.10 Main scheme applicants placed through adjustment: 4 days after A level results day

Placed through adjustment: applicants at 4 days after A level results day

Applicant type	Status	2010	2011	2012	2013	2014	2015	2016	2017	2018	2019
Main scheme	Placed (Adjustment)	0	0	10	10	10	0	10	0	0	0

A.11 Main scheme applicants placed through adjustment: 4 days after A level results day

Placed through adjustment: difference between cycle and 2018 cycle

Applicant type	Status	2010	2011	2012	2013	2014	2015	2016	2017	2018	2019
Main scheme	Placed (Adjustment)										

Note: The percentage change is not recorded in the above table for groups with fewer than 10 placed applicants in that cycle or in the 2018 cycle.

A.12 Main scheme applicants not currently placed from Scotland: 4 days after A level results day

Applicants in unplaced states: difference between cycle and 2018 cycle

— Holding offer
— Free to be placed in Clearing



Note: The percentage change is not plotted in the above chart for groups with fewer than 30 unplaced applicants in any one cycle.

A.13 Main scheme applicants not currently placed from Scotland: 4 days after A level results day

Applicants in unplaced states: applicants at 4 days after A level results day

Applicant type	Status	2010	2011	2012	2013	2014	2015	2016	2017	2018	2019
Main scheme	Holding offer	2,630	2,340	2,630	2,660	2,490	2,200	2,050	2,250	2,230	2,360
	Free to be placed in Clearing	12,900	13,670	12,680	12,440	12,790	14,840	14,560	13,160	12,440	12,090

A.14 Main scheme applicants not currently placed from Scotland: 4 days after A level results day

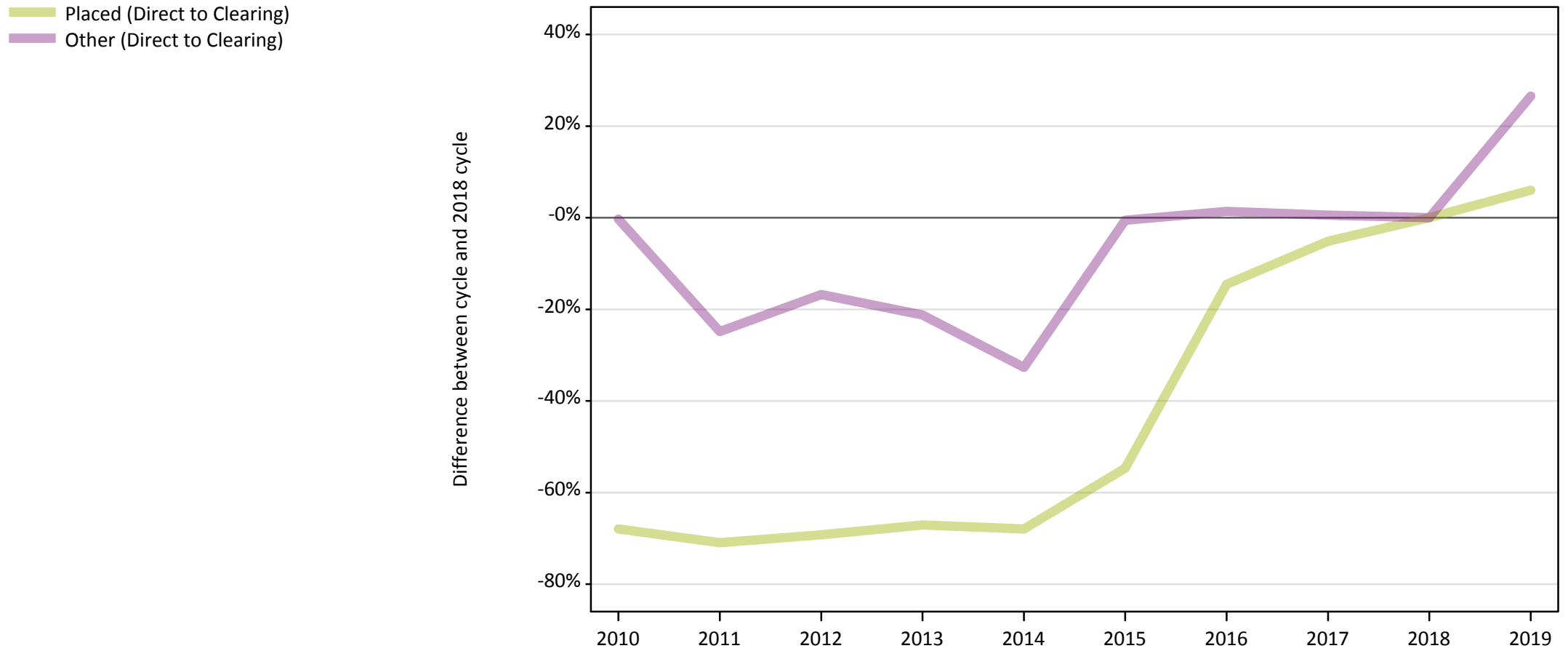
Applicants in unplaced states: difference between cycle and 2018 cycle

Applicant type	Status	2010	2011	2012	2013	2014	2015	2016	2017	2018	2019
Main scheme	Holding offer	18%	5%	18%	19%	12%	-1%	-8%	1%	0%	6%
	Free to be placed in Clearing	4%	10%	2%	-0%	3%	19%	17%	6%	0%	-3%

Note: The percentage change is not recorded in the above table for groups with fewer than 10 unplaced applicants in that cycle or in the 2018 cycle.

A.15 Direct to Clearing applicants from Scotland: 4 days after A level results day

Direct to Clearing: difference between cycle and 2018 cycle



Note: The percentage change is not plotted in the above chart for groups with fewer than 30 placed applicants in any one cycle.

A.16 Direct to Clearing applicants from Scotland: 4 days after A level results day

Direct to Clearing 4 days after A level results day

Applicant type	Status	2010	2011	2012	2013	2014	2015	2016	2017	2018	2019
Direct to Clearing	Placed (Direct to Clearing)	80	70	70	80	80	110	200	220	230	250
	Other (Direct to Clearing)	360	270	300	280	240	360	360	360	360	450

A.17 Direct to Clearing applicants from Scotland: 4 days after A level results day

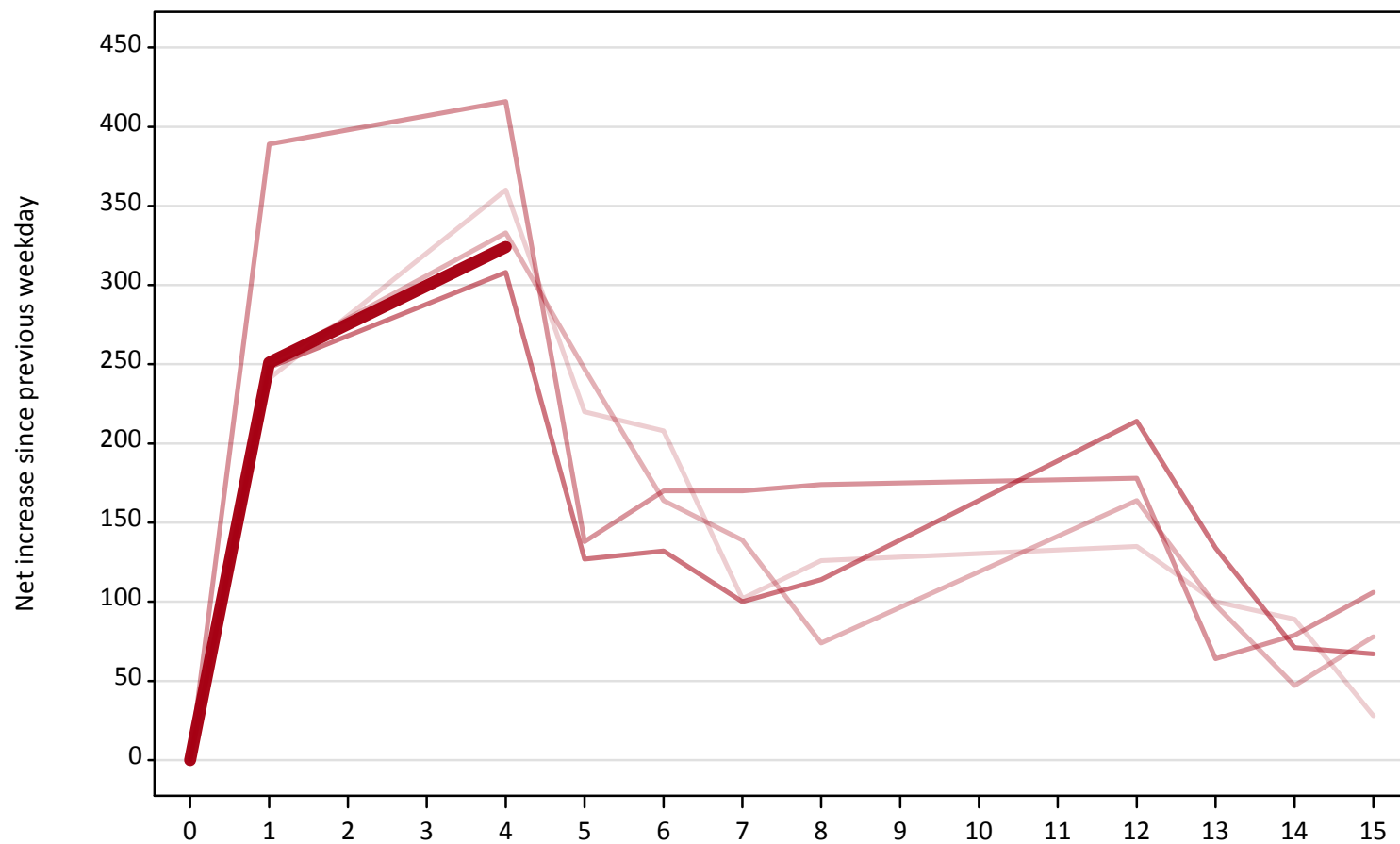
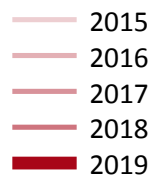
Direct to Clearing: difference between cycle and 2018 cycle

Applicant type	Status	2010	2011	2012	2013	2014	2015	2016	2017	2018	2019
Direct to Clearing	Placed (Direct to Clearing)	-68%	-71%	-69%	-67%	-68%	-55%	-15%	-5%	0%	6%
	Other (Direct to Clearing)	-0%	-25%	-17%	-21%	-33%	-1%	1%	1%	0%	27%

Note: The percentage change is not recorded in the above table for groups with fewer than 10 placed applicants in that cycle or in the 2018 cycle.

A.18 All Placed: Daily net change (from Scotland)

Net increase since previous weekday (2019 cycle up to 4 days after A level results day)

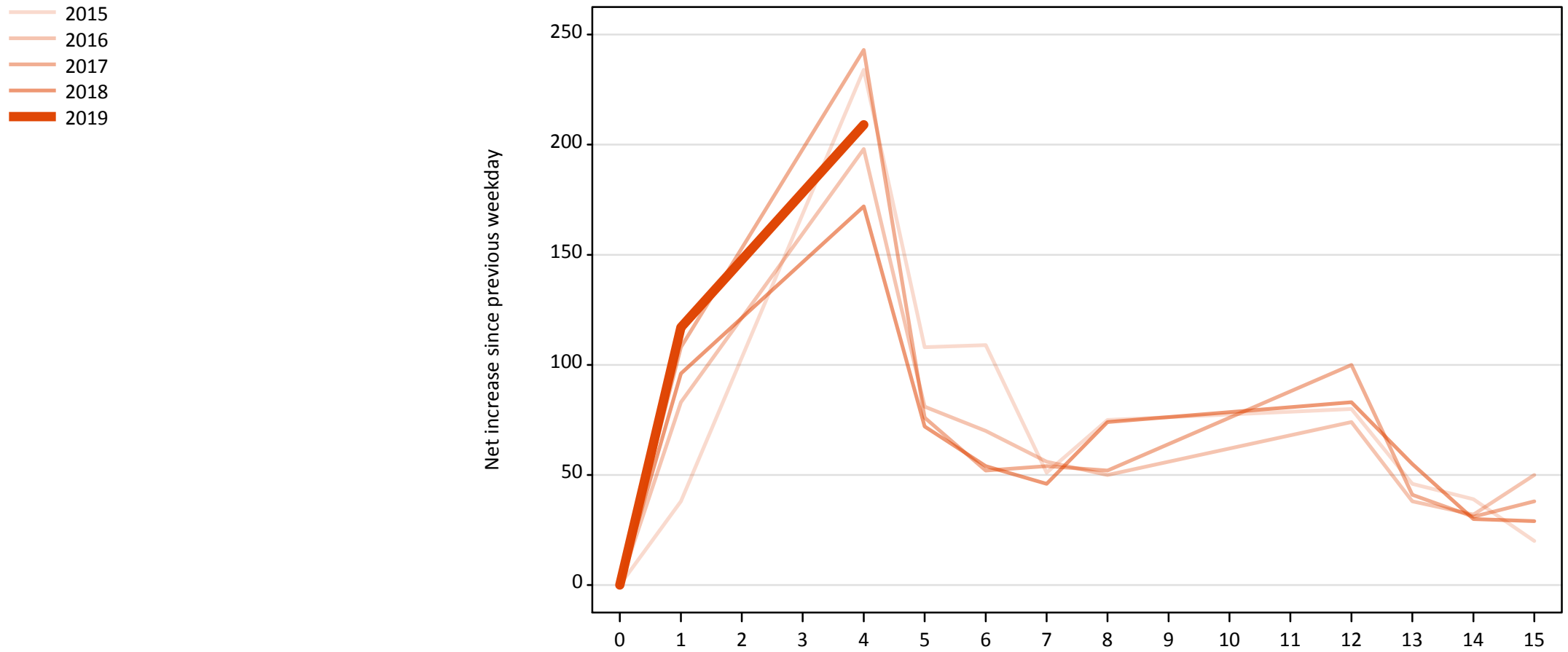


A.19 All Placed: Daily net change (from Scotland)

Net increase since previous weekday (2019 cycle up to 4 days after A level results day)

Applicant status, days since A level results day		2015	2016	2017	2018	2019
All Placed	0	0	0	0	0	0
	1	240	250	390	250	250
	4	360	330	420	310	320
	5	220	250	140	130	
	6	210	160	170	130	
	7	100	140	170	100	
	8	130	70	170	110	
	12	140	160	180	210	
	13	100	100	60	130	
	14	90	50	80	70	
	15	30	80	110	70	

A.20 Placed through Clearing only: Daily net change (from Scotland)
Net increase since previous weekday (2019 cycle up to 4 days after A level results day)



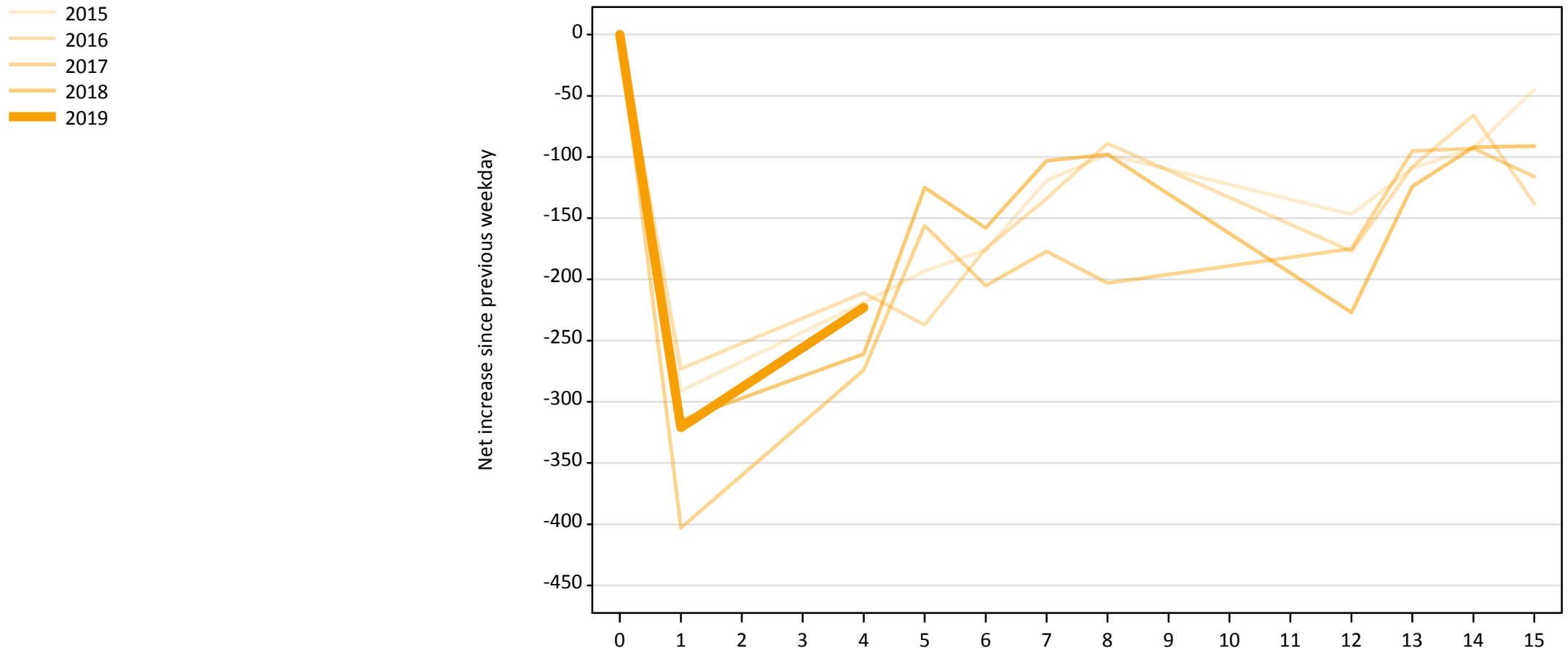
A.21 Placed through Clearing only: Daily net change (from Scotland)

Net increase since previous weekday (2019 cycle up to 4 days after A level results day)

Applicant status, days since A level results day		2015	2016	2017	2018	2019
Placed through Clearing only	0	0	0	0	0	0
	1	40	80	110	100	120
	4	230	200	240	170	210
	5	110	80	80	70	
	6	110	70	50	50	
	7	50	60	50	50	
	8	80	50	50	70	
	12	80	70	100	80	
	13	50	40	40	60	
	14	40	30	30	30	
	15	20	50	40	30	

A.22 Holding Offer: Daily net change (from Scotland)

Net increase since previous weekday (2019 cycle up to 4 days after A level results day)



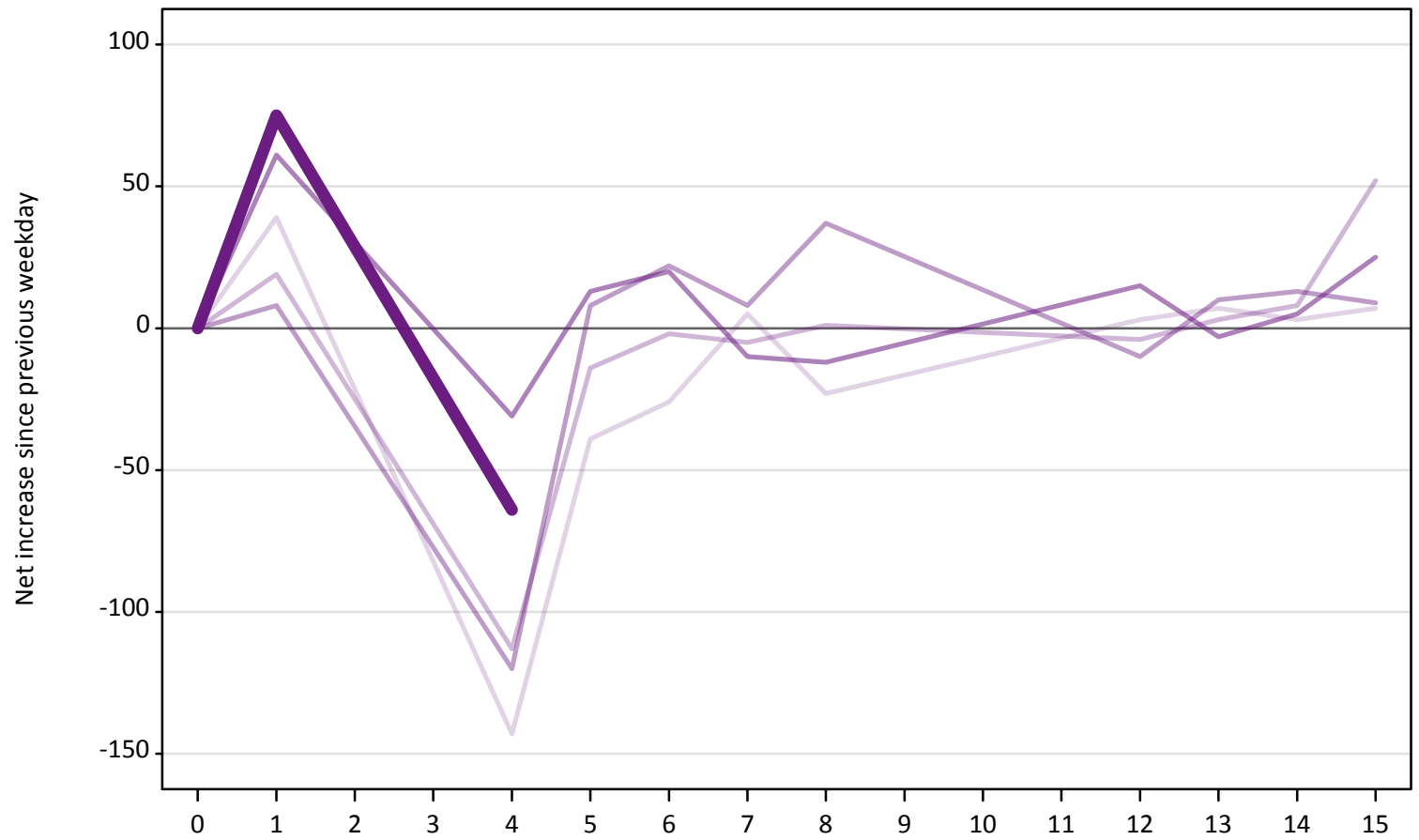
A.23 Holding Offer: Daily net change (from Scotland)

Net increase since previous weekday (2019 cycle up to 4 days after A level results day)

Applicant status, days since A level results day	2015	2016	2017	2018	2019	
Holding Offer	0	0	0	0	0	
	1	-290	-270	-400	-320	-320
	4	-220	-210	-270	-260	-220
	5	-190	-240	-160	-130	
	6	-180	-180	-210	-160	
	7	-120	-130	-180	-100	
	8	-100	-90	-200	-100	
	12	-150	-180	-180	-230	
	13	-110	-110	-100	-120	
	14	-90	-70	-90	-90	
	15	-50	-140	-120	-90	

A.24 Free to be placed in Clearing: Daily net change (from Scotland)
Net increase since previous weekday (2019 cycle up to 4 days after A level results day)

- 2015
- 2016
- 2017
- 2018
- 2019



A.25 Free to be placed in Clearing: Daily net change (from Scotland)

Net increase since previous weekday (2019 cycle up to 4 days after A level results day)

Applicant status, days since A level results day		2015	2016	2017	2018	2019
Free to be placed in Clearing	0	0	0	0	0	0
	1	40	20	10	60	80
	4	-140	-110	-120	-30	-60
	5	-40	-10	10	10	
	6	-30	0	20	20	
	7	10	-10	10	-10	
	8	-20	0	40	-10	
	12	0	0	-10	20	
	13	10	0	10	0	
	14	0	10	10	10	
	15	10	50	10	30	