

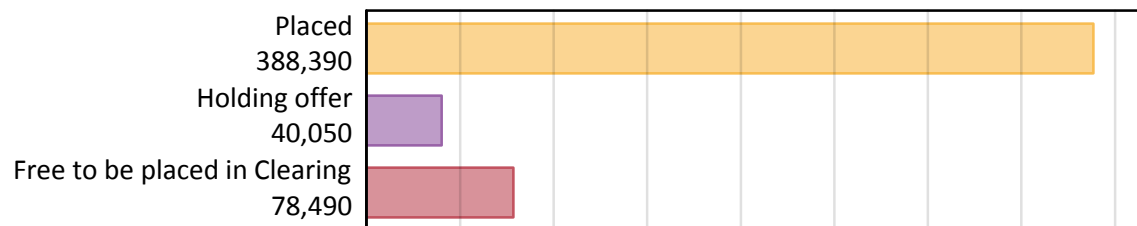
Daily Clearing Analysis: Overview

Analysis at 00:05 on Monday 19 August 2019 (4 days after A level results day)

A.1 Applicants by type and status from the UK, 2019 cycle

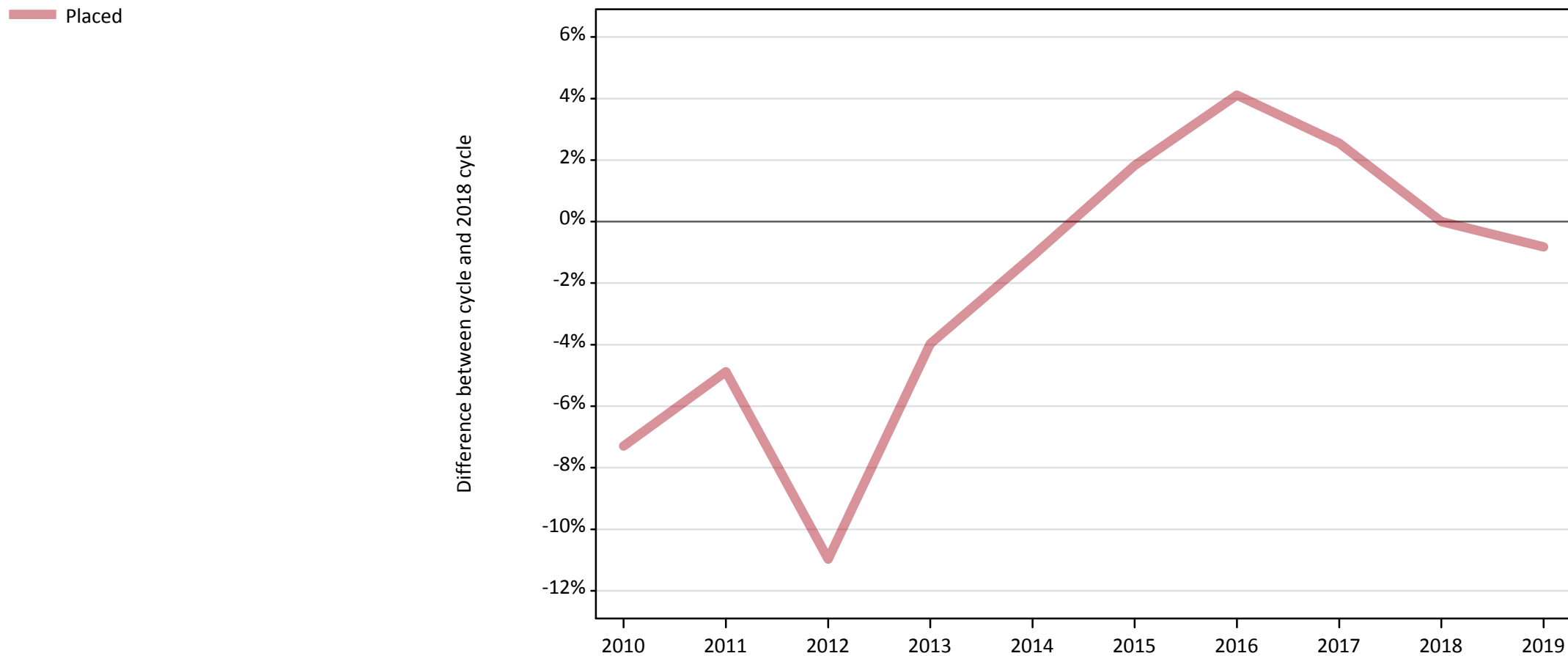
Applicant type	Status	2019
Main scheme	Placed (Clearing)	29,110
	Placed (Adjustment)	430
	Placed (Firm)	316,350
	Placed (Insurance)	26,880
	Placed (Other)	9,780
	Holding offer	40,050
	Free to be placed in Clearing	78,490
Direct to Clearing	Placed (Direct to Clearing)	5,850
	Other (Direct to Clearing)	8,110
All applicants	Placed	388,390

A.2 Summary of applicants who are placed, holding offers or free to be placed in Clearing (the UK)



A.3 All placed applicants from the UK: 4 days after A level results day

All placed applicants: difference between cycle and 2018 cycle



Note: The percentage change is not plotted in the above chart for groups with fewer than 30 placed applicants in any one cycle.

A.4 All placed applicants from the UK: 4 days after A level results day

All placed applicants: applicants at 4 days after A level results day

Applicant type	Status	2010	2011	2012	2013	2014	2015	2016	2017	2018	2019
All applicants	Placed	363,020	372,490	348,630	376,040	387,200	398,750	407,700	401,560	391,600	388,390

A.5 All placed applicants from the UK: 4 days after A level results day

All placed applicants: difference between cycle and 2018 cycle

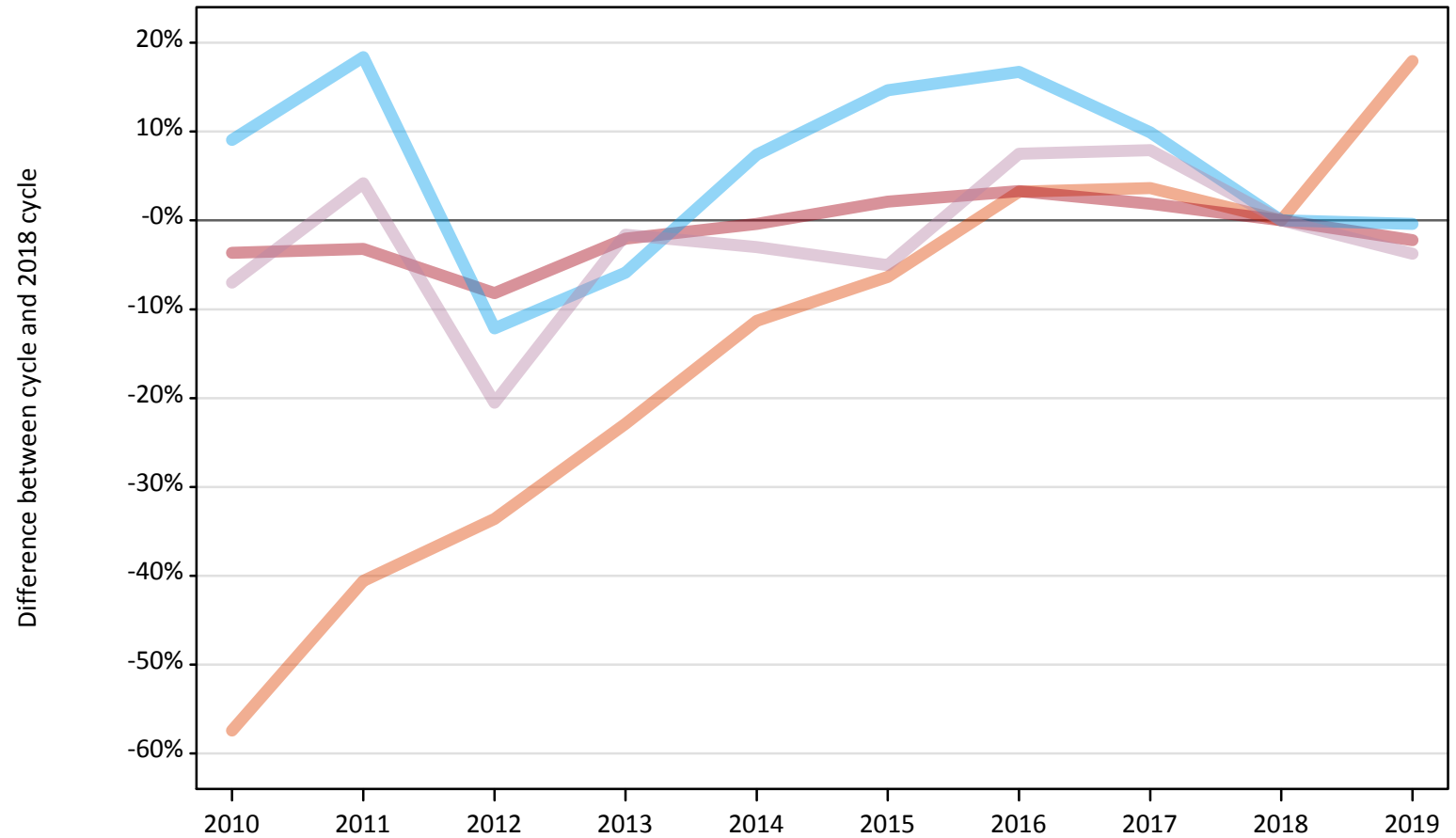
Applicant type	Status	2010	2011	2012	2013	2014	2015	2016	2017	2018	2019
All applicants	Placed	-7%	-5%	-11%	-4%	-1%	2%	4%	3%	0%	-1%

Note: The percentage change is not recorded in the above table for groups with fewer than 10 placed applicants in that cycle or in the 2018 cycle.

A.6 Placed main scheme applicants from the UK: 4 days after A level results day

All Main scheme placed routes (excluding Adjustment): difference between cycle and 2018 cycle

- Placed (Clearing)
- Placed (Firm)
- Placed (Insurance)
- Placed (Other)



Note: The percentage change is not plotted in the above chart for groups with fewer than 30 placed applicants in any one cycle.

A.7 Placed main scheme applicants from the UK: 4 days after A level results day

All Main scheme placed routes (excluding Adjustment): applicants at 4 days after A level results day

Applicant type	Status	2010	2011	2012	2013	2014	2015	2016	2017	2018	2019
Main scheme	Placed (Clearing)	10,510	14,660	16,380	19,030	21,890	23,120	25,480	25,580	24,680	29,110
	Placed (Firm)	311,780	313,140	297,110	316,960	322,300	330,400	334,280	329,660	323,560	316,350
	Placed (Insurance)	29,430	31,950	23,710	25,400	28,980	30,940	31,500	29,660	26,990	26,880
	Placed (Other)	9,450	10,590	8,080	10,000	9,860	9,650	10,920	10,960	10,160	9,780

A.8 Placed main scheme applicants from the UK: 4 days after A level results day

All Main scheme placed routes (excluding Adjustment): difference between cycle and 2018 cycle

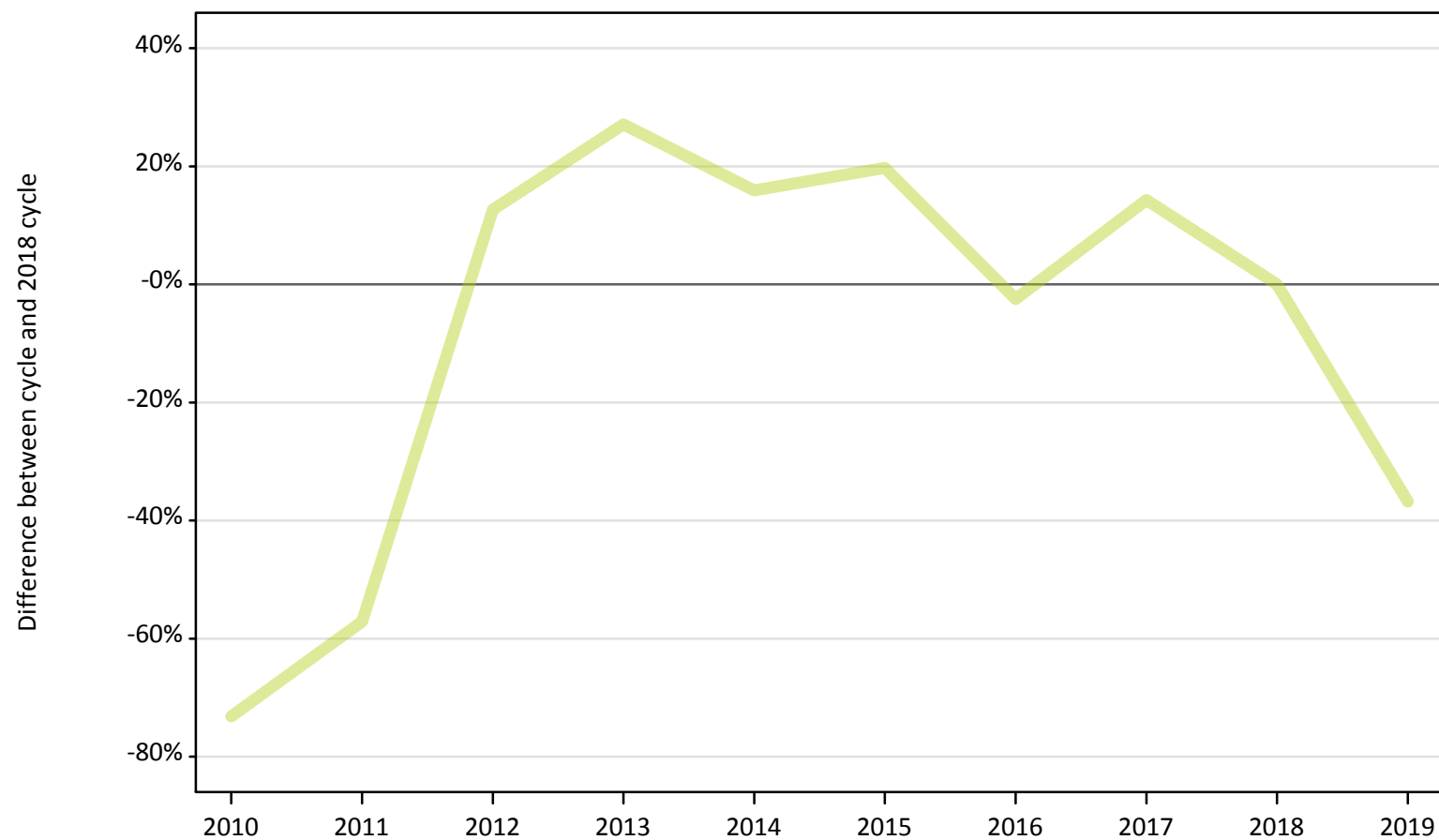
Applicant type	Status	2010	2011	2012	2013	2014	2015	2016	2017	2018	2019
Main scheme	Placed (Clearing)	-57%	-41%	-34%	-23%	-11%	-6%	3%	4%	0%	18%
	Placed (Firm)	-4%	-3%	-8%	-2%	-0%	2%	3%	2%	0%	-2%
	Placed (Insurance)	9%	18%	-12%	-6%	7%	15%	17%	10%	0%	-0%
	Placed (Other)	-7%	4%	-21%	-2%	-3%	-5%	8%	8%	0%	-4%

Note: The percentage change is not recorded in the above table for groups with fewer than 10 placed applicants in that cycle or in the 2018 cycle.

A.9 Main scheme applicants placed through adjustment: 4 days after A level results day

Placed through adjustment: difference between cycle and 2018 cycle

Placed (Adjustment)



Note: The percentage change is not plotted in the above chart for groups with fewer than 30 placed applicants in any one cycle.

A.10 Main scheme applicants placed through adjustment: 4 days after A level results day

Placed through adjustment: applicants at 4 days after A level results day

Applicant type	Status	2010	2011	2012	2013	2014	2015	2016	2017	2018	2019
Main scheme	Placed (Adjustment)	180	290	770	860	790	810	660	780	680	430

A.11 Main scheme applicants placed through adjustment: 4 days after A level results day

Placed through adjustment: difference between cycle and 2018 cycle

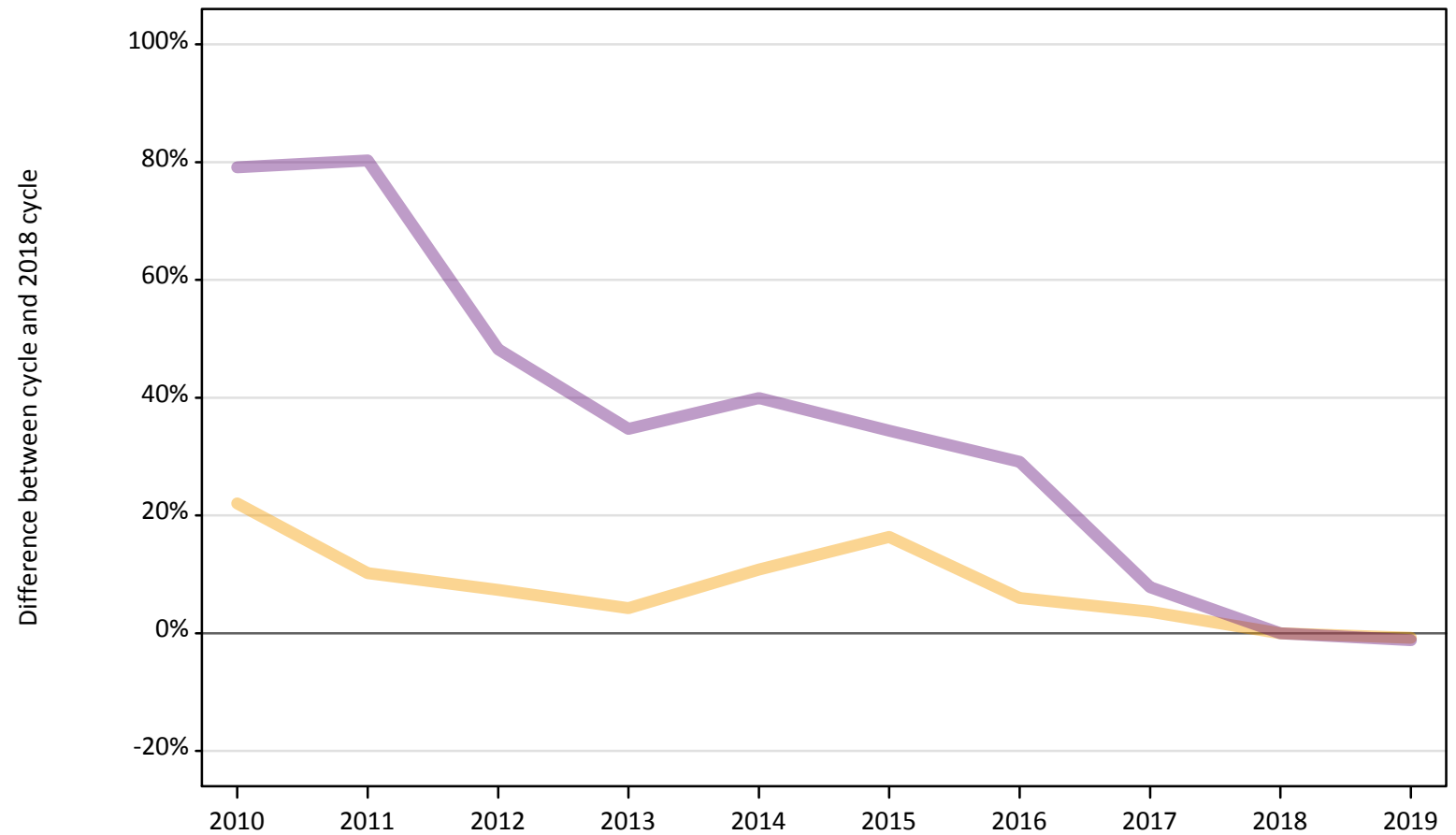
Applicant type	Status	2010	2011	2012	2013	2014	2015	2016	2017	2018	2019
Main scheme	Placed (Adjustment)	-73%	-57%	13%	27%	16%	20%	-3%	14%	0%	-37%

Note: The percentage change is not recorded in the above table for groups with fewer than 10 placed applicants in that cycle or in the 2018 cycle.

A.12 Main scheme applicants not currently placed from the UK: 4 days after A level results day

Applicants in unplaced states: difference between cycle and 2018 cycle

— Holding offer
— Free to be placed in Clearing



Note: The percentage change is not plotted in the above chart for groups with fewer than 30 unplaced applicants in any one cycle.

A.13 Main scheme applicants not currently placed from the UK: 4 days after A level results day

Applicants in unplaced states: applicants at 4 days after A level results day

Applicant type	Status	2010	2011	2012	2013	2014	2015	2016	2017	2018	2019
Main scheme	Holding offer	49,250	44,480	43,320	42,080	44,720	46,960	42,770	41,820	40,360	40,050
	Free to be placed in Clearing	142,300	143,190	117,730	107,000	111,150	106,740	102,530	85,650	79,430	78,490

A.14 Main scheme applicants not currently placed from the UK: 4 days after A level results day

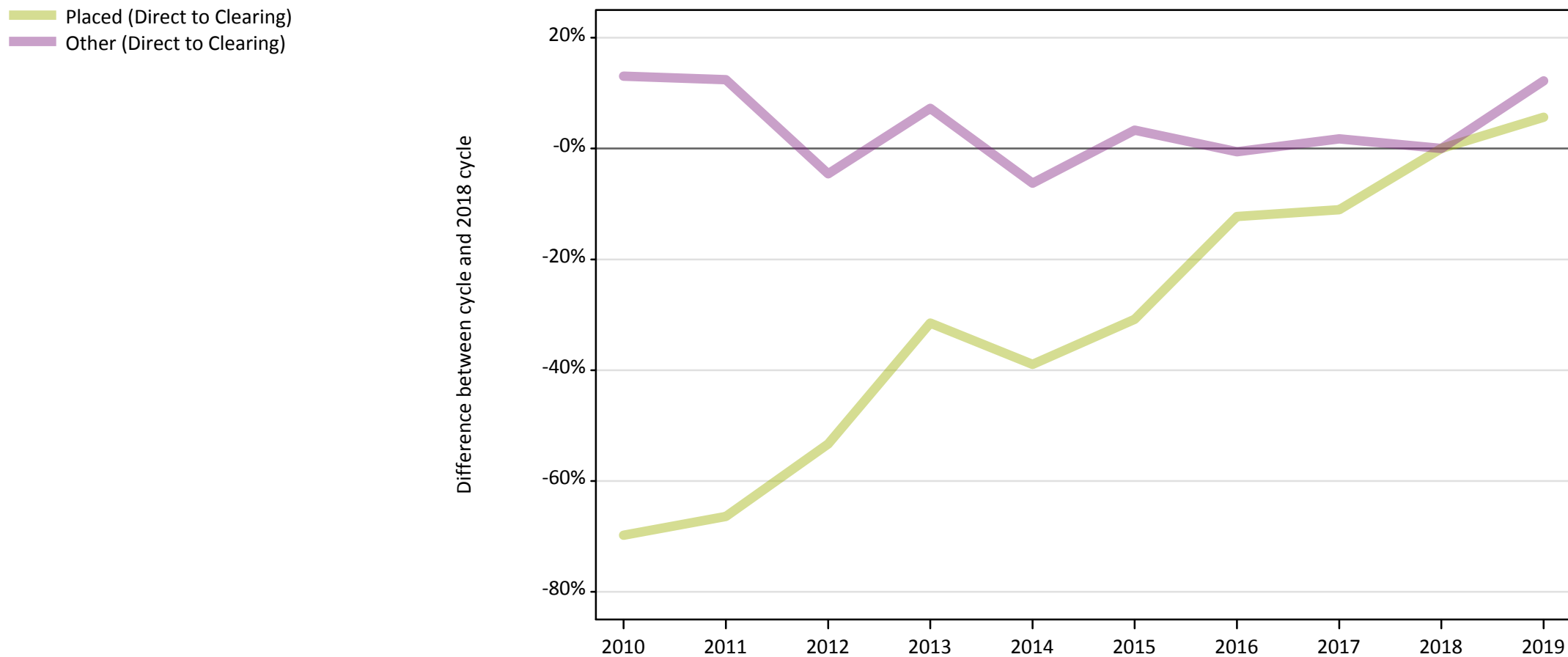
Applicants in unplaced states: difference between cycle and 2018 cycle

Applicant type	Status	2010	2011	2012	2013	2014	2015	2016	2017	2018	2019
Main scheme	Holding offer	22%	10%	7%	4%	11%	16%	6%	4%	0%	-1%
	Free to be placed in Clearing	79%	80%	48%	35%	40%	34%	29%	8%	0%	-1%

Note: The percentage change is not recorded in the above table for groups with fewer than 10 unplaced applicants in that cycle or in the 2018 cycle.

A.15 Direct to Clearing applicants from the UK: 4 days after A level results day

Direct to Clearing: difference between cycle and 2018 cycle



Note: The percentage change is not plotted in the above chart for groups with fewer than 30 placed applicants in any one cycle.

A.16 Direct to Clearing applicants from the UK: 4 days after A level results day

Direct to Clearing 4 days after A level results day

Applicant type	Status	2010	2011	2012	2013	2014	2015	2016	2017	2018	2019
Direct to Clearing	Placed (Direct to Clearing)	1,670	1,860	2,580	3,790	3,380	3,830	4,860	4,920	5,540	5,850
	Other (Direct to Clearing)	8,170	8,120	6,900	7,750	6,770	7,460	7,180	7,350	7,220	8,110

A.17 Direct to Clearing applicants from the UK: 4 days after A level results day

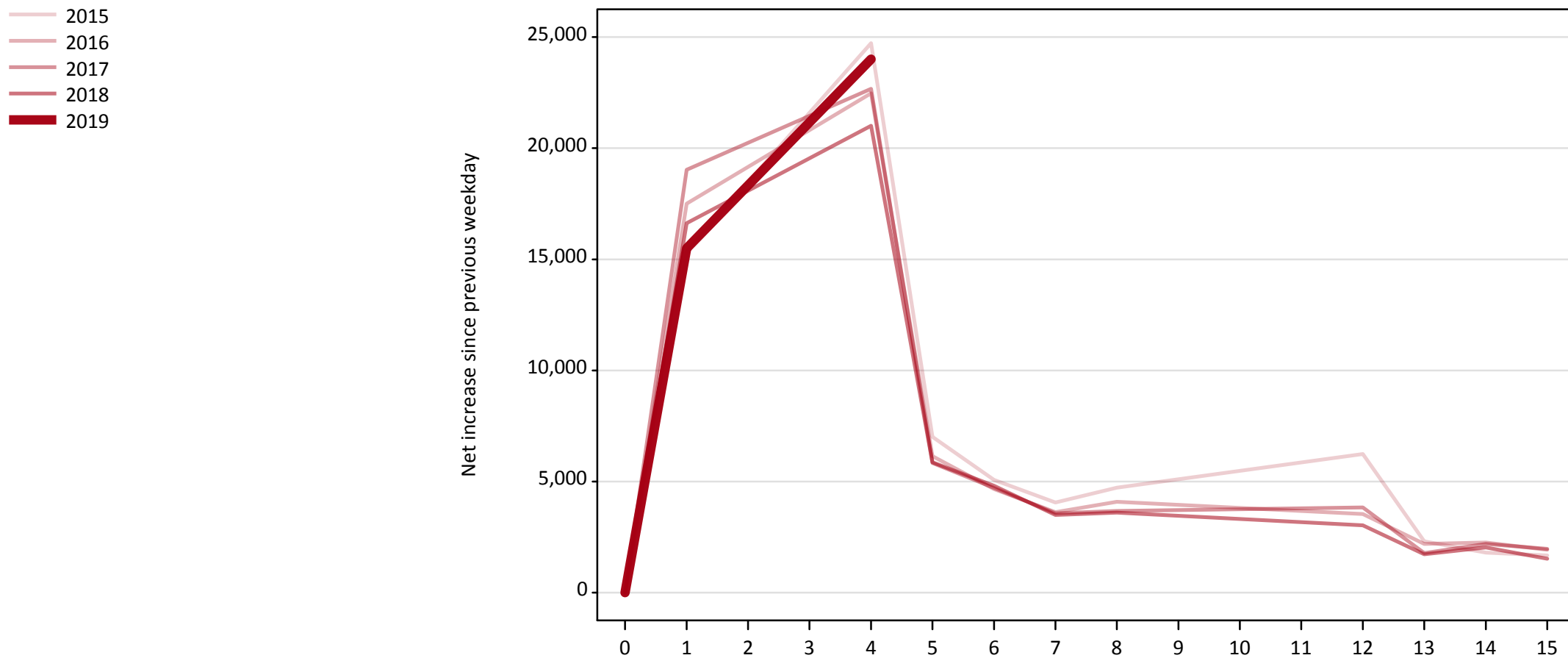
Direct to Clearing: difference between cycle and 2018 cycle

Applicant type	Status	2010	2011	2012	2013	2014	2015	2016	2017	2018	2019
Direct to Clearing	Placed (Direct to Clearing)	-70%	-66%	-53%	-32%	-39%	-31%	-12%	-11%	0%	6%
	Other (Direct to Clearing)	13%	12%	-5%	7%	-6%	3%	-1%	2%	0%	12%

Note: The percentage change is not recorded in the above table for groups with fewer than 10 placed applicants in that cycle or in the 2018 cycle.

A.18 All Placed: Daily net change (from the UK)

Net increase since previous weekday (2019 cycle up to 4 days after A level results day)

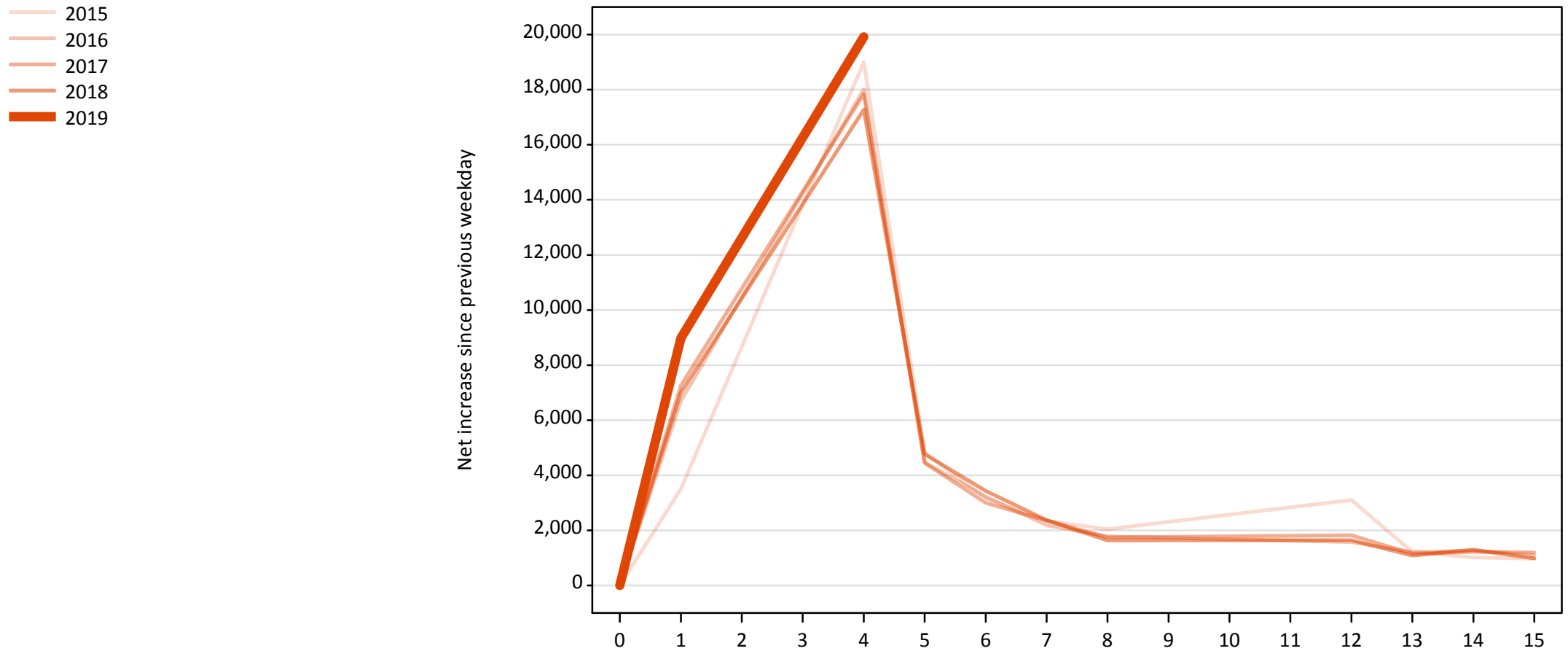


A.19 All Placed: Daily net change (from the UK)

Net increase since previous weekday (2019 cycle up to 4 days after A level results day)

Applicant status, days since A level results day	2015	2016	2017	2018	2019	
All Placed	0	0	0	0	0	
	1	15,350	17,510	19,030	16,620	15,490
	4	24,730	22,470	22,670	21,010	24,010
	5	7,020	6,140	5,840	5,870	
	6	5,070	4,660	4,710	4,810	
	7	4,060	3,630	3,570	3,500	
	8	4,720	4,090	3,670	3,600	
	12	6,240	3,530	3,840	3,020	
	13	2,310	2,200	1,780	1,720	
	14	1,810	2,260	2,200	2,030	
	15	1,680	1,920	1,970	1,530	

A.20 Placed through Clearing only: Daily net change (from the UK)
Net increase since previous weekday (2019 cycle up to 4 days after A level results day)

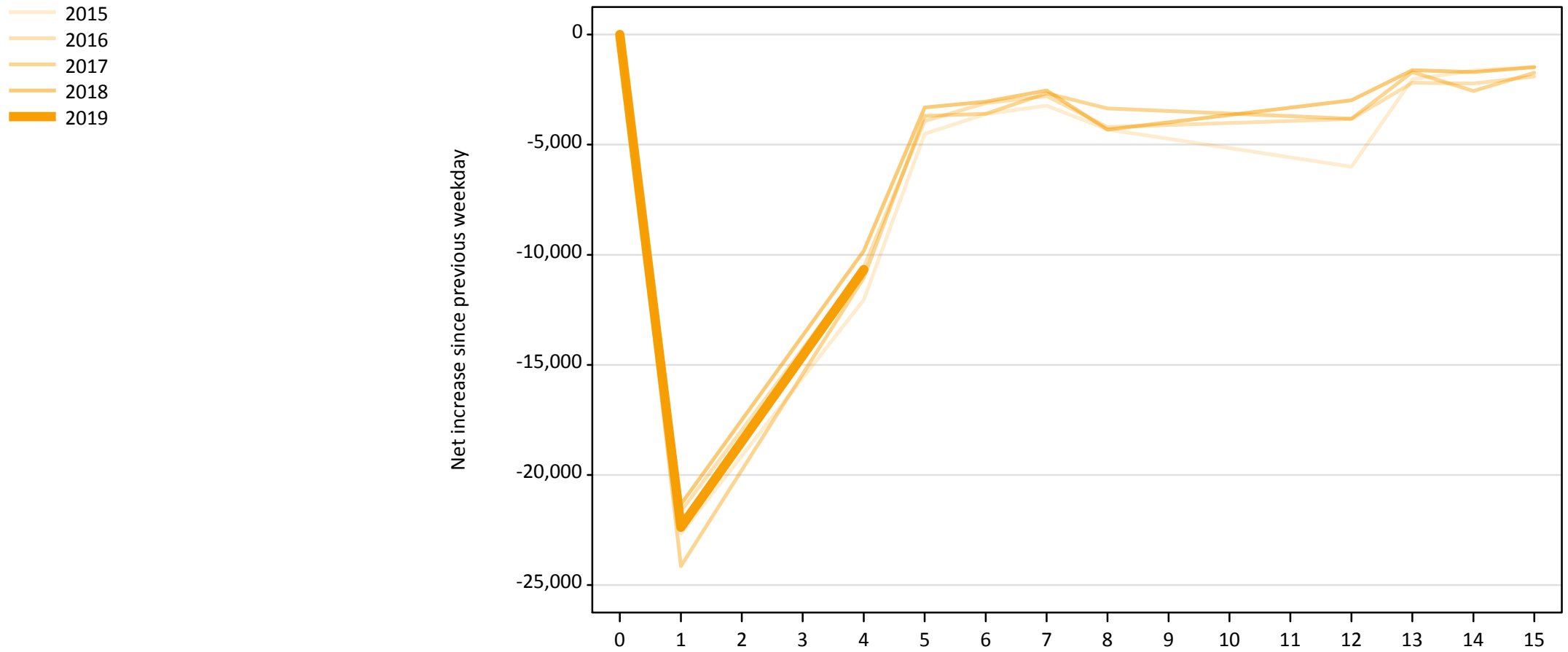


A.21 Placed through Clearing only: Daily net change (from the UK)

Net increase since previous weekday (2019 cycle up to 4 days after A level results day)

Applicant status, days since A level results day		2015	2016	2017	2018	2019
Placed through Clearing only	0	0	0	0	0	0
	1	3,510	6,700	7,260	7,010	8,980
	4	19,000	18,010	17,840	17,270	19,910
	5	4,820	4,470	4,450	4,770	
	6	3,170	3,220	3,000	3,430	
	7	2,350	2,180	2,360	2,370	
	8	2,040	1,780	1,740	1,640	
	12	3,100	1,570	1,820	1,640	
	13	1,220	1,210	1,150	1,080	
	14	1,020	1,270	1,220	1,300	
	15	980	1,090	1,200	980	

A.22 Holding Offer: Daily net change (from the UK)
Net increase since previous weekday (2019 cycle up to 4 days after A level results day)

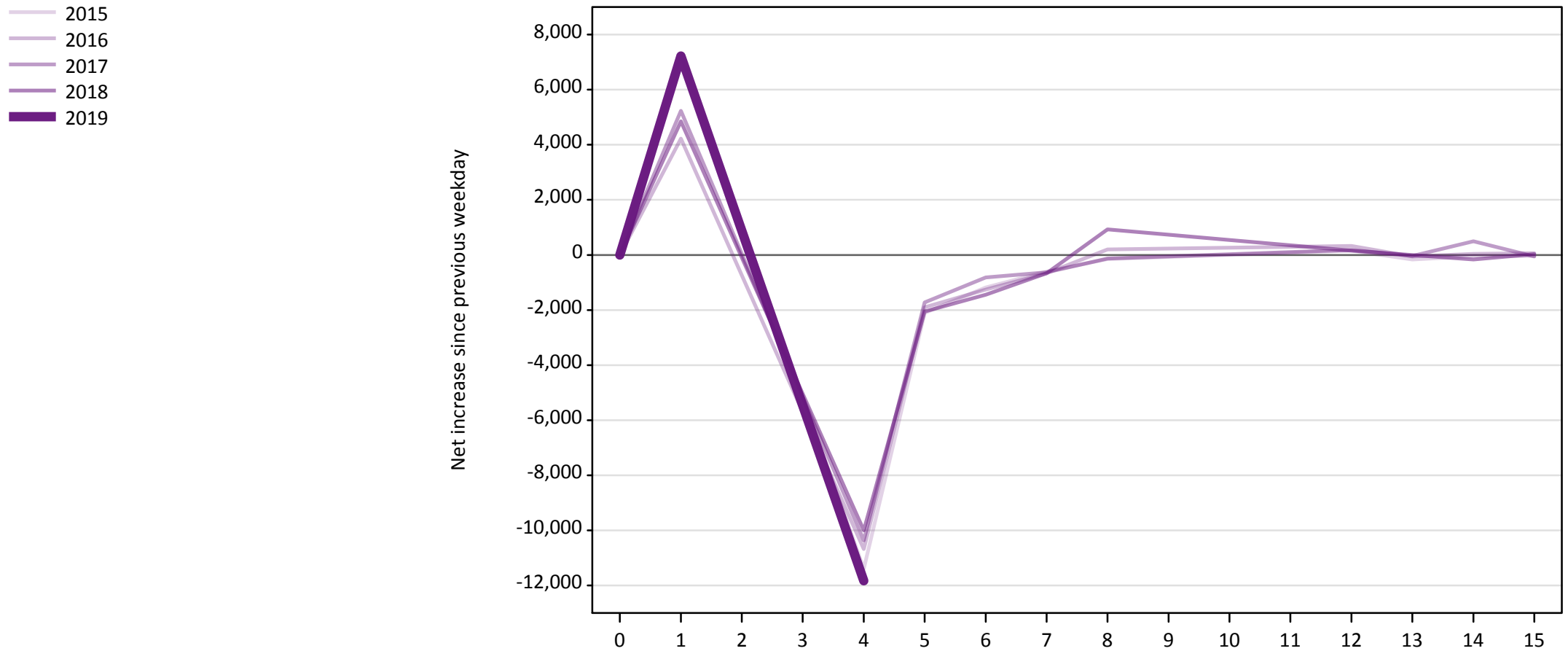


A.23 Holding Offer: Daily net change (from the UK)

Net increase since previous weekday (2019 cycle up to 4 days after A level results day)

Applicant status, days since A level results day		2015	2016	2017	2018	2019
Holding Offer	0	0	0	0	0	0
	1	-22,670	-21,650	-24,140	-21,330	-22,370
	4	-12,050	-10,570	-11,040	-9,830	-10,670
	5	-4,510	-3,920	-3,690	-3,320	
	6	-3,610	-3,110	-3,600	-3,040	
	7	-3,230	-2,790	-2,670	-2,540	
	8	-4,310	-4,200	-3,360	-4,320	
	12	-6,000	-3,830	-3,830	-2,980	
	13	-2,030	-2,190	-1,700	-1,620	
	14	-1,640	-2,220	-2,560	-1,700	
	15	-1,470	-1,900	-1,740	-1,480	

A.24 Free to be placed in Clearing: Daily net change (from the UK)
Net increase since previous weekday (2019 cycle up to 4 days after A level results day)



A.25 Free to be placed in Clearing: Daily net change (from the UK)

Net increase since previous weekday (2019 cycle up to 4 days after A level results day)

Applicant status, days since A level results day		2015	2016	2017	2018	2019
Free to be placed in Clearing	0	0	0	0	0	0
	1	7,260	4,220	5,230	4,850	7,220
	4	-11,400	-10,680	-10,370	-10,000	-11,830
	5	-2,100	-1,900	-1,730	-2,050	
	6	-1,180	-1,260	-820	-1,450	
	7	-610	-660	-630	-660	
	8	-150	200	-130	920	
	12	150	320	190	160	
	13	-170	-50	-40	0	
	14	-50	40	500	-160	
	15	-40	60	-50	30	