

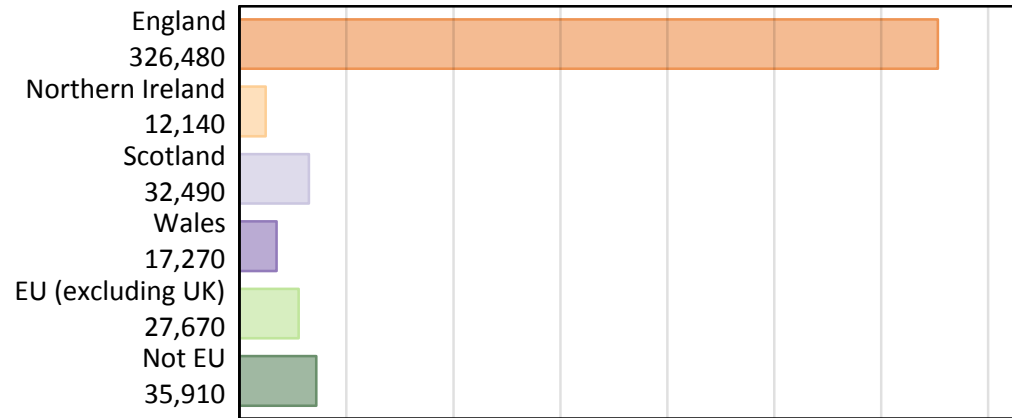
# Daily Clearing Analysis: Country

Analysis at 00:05 on Monday 19 August 2019 (4 days after A level results day)

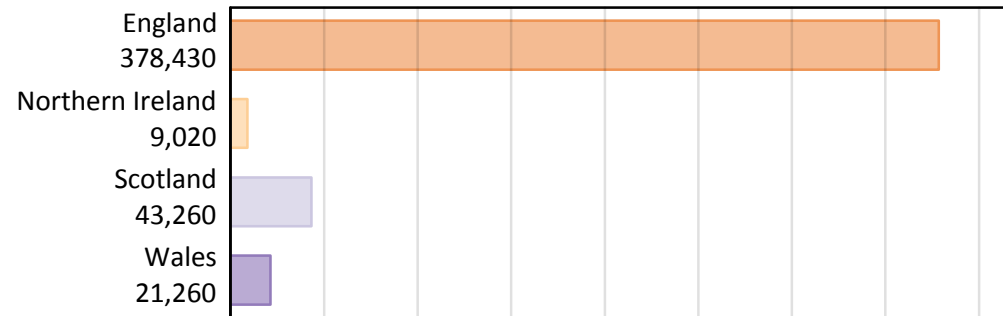
## B.1 Placed applicants by country of provider and domicile, 2019 cycle

Domicile of applicant	Country of provider				
	England	Northern Ireland	Scotland	Wales	UK
England	312,540	270	4,240	9,440	326,480
Northern Ireland	3,040	8,100	870	120	12,140
Scotland	1,430	20	31,010	30	32,490
Wales	7,490	10	130	9,650	17,270
EU (excluding UK)	22,540	400	3,790	950	27,670
Not EU	31,390	220	3,230	1,070	35,910
All	378,430	9,020	43,260	21,260	451,970

### B.2 Placed applicants by domicile group



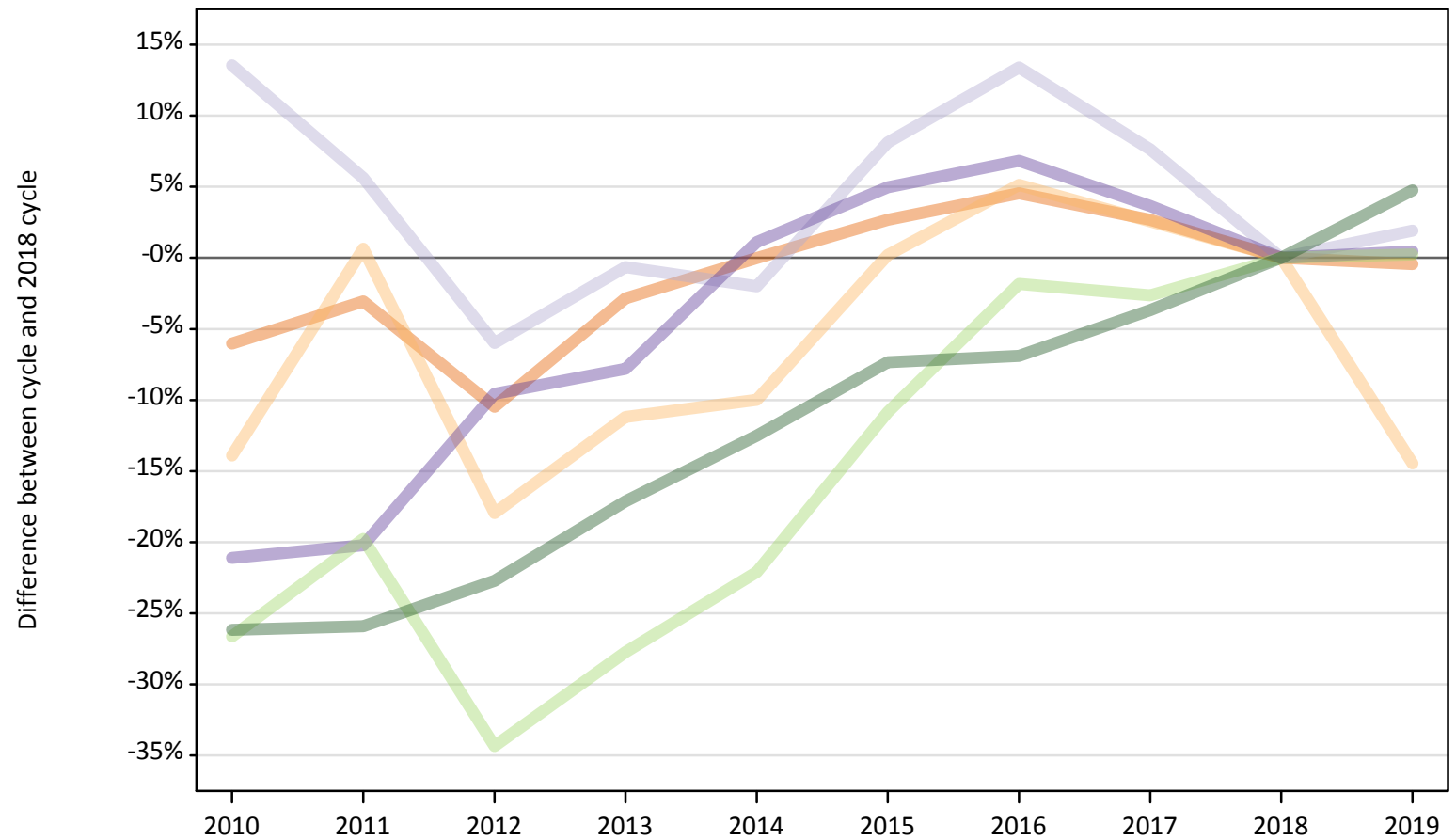
### B.3 Placed applicants by country of provider



### B.4 Placed applicants at 4 days after A level results day: providers in England

Selected applicant domiciles: difference between cycle and 2018 cycle (at 4 days after A level results day)

- England
- Northern Ireland
- Scotland
- Wales
- EU (excluding UK)
- Not EU



Note: The percentage change is not plotted in the above chart for groups with fewer than 30 placed applicants in any one cycle.

### B.5 Placed applicants at 4 days after A level results day: providers in England

Placed applicants by domicile (at 4 days after A level results day)

Domicile of applicant	2010	2011	2012	2013	2014	2015	2016	2017	2018	2019
England	294,950	304,300	281,020	304,950	313,840	322,270	328,160	322,300	313,890	312,540
Northern Ireland	3,060	3,580	2,920	3,160	3,200	3,570	3,740	3,650	3,560	3,040
Scotland	1,590	1,480	1,320	1,390	1,380	1,520	1,590	1,510	1,400	1,430
Wales	5,880	5,950	6,740	6,880	7,540	7,830	7,970	7,730	7,460	7,490
EU (excluding UK)	16,500	18,040	14,760	16,250	17,510	20,040	22,070	21,890	22,480	22,540
Not EU	22,120	22,200	23,160	24,830	26,220	27,760	27,900	28,860	29,960	31,390

### B.6 Placed applicants at 4 days after A level results day: providers in England

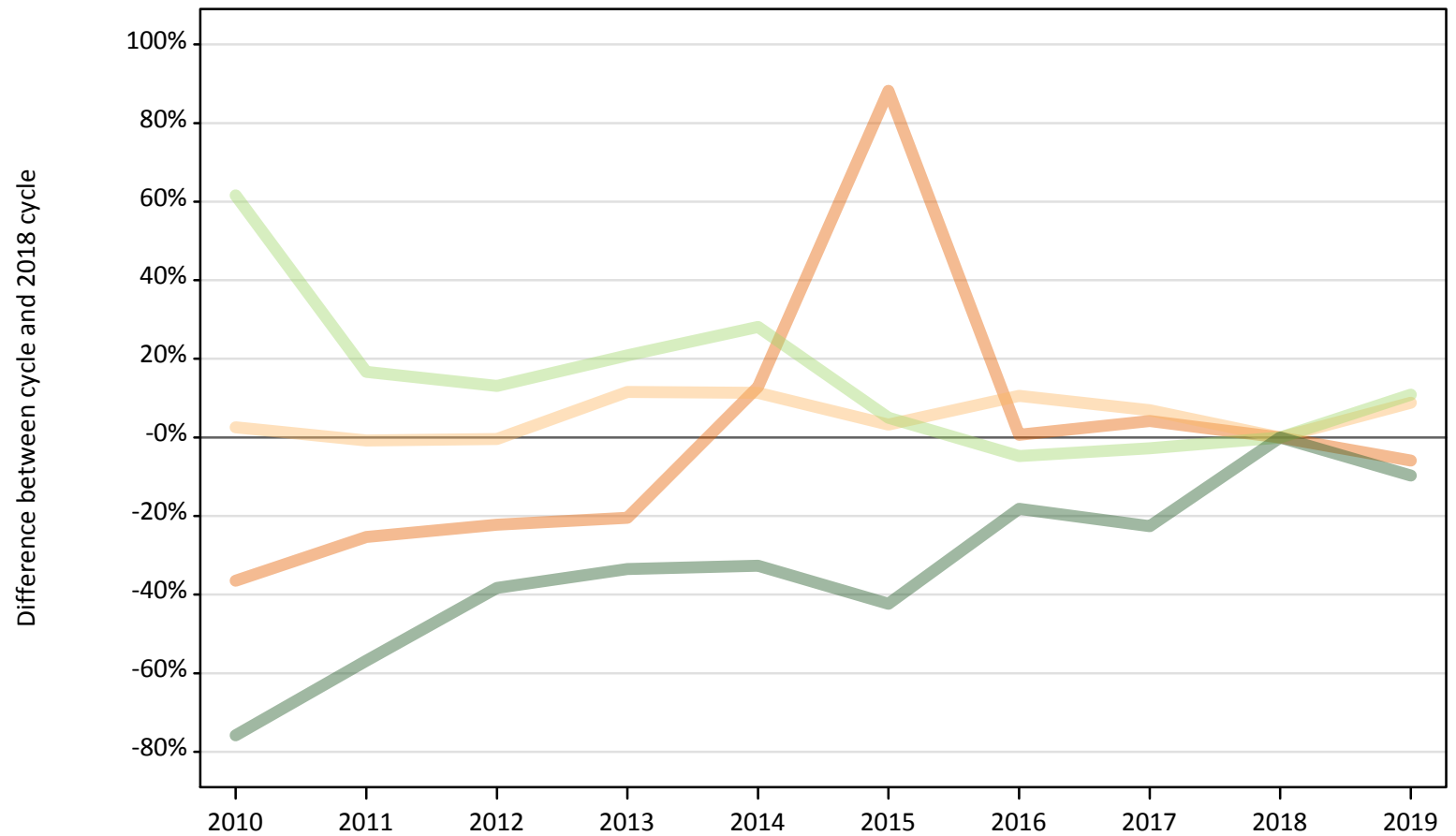
Selected applicant domiciles: difference between cycle and 2018 cycle (at 4 days after A level results day)

Domicile of applicant	2010	2011	2012	2013	2014	2015	2016	2017	2018	2019
England	-6%	-3%	-10%	-3%	-0%	3%	5%	3%	0%	-0%
Northern Ireland	-14%	1%	-18%	-11%	-10%	0%	5%	3%	0%	-14%
Scotland	14%	6%	-6%	-1%	-2%	8%	13%	8%	0%	2%
Wales	-21%	-20%	-10%	-8%	1%	5%	7%	4%	0%	0%
EU (excluding UK)	-27%	-20%	-34%	-28%	-22%	-11%	-2%	-3%	0%	0%
Not EU	-26%	-26%	-23%	-17%	-12%	-7%	-7%	-4%	0%	5%

Note: The percentage change is not recorded in the above table for groups with fewer than 10 placed applicants in that cycle or in the 2018 cycle.

**B.7 Placed applicants at 4 days after A level results day: providers in Northern Ireland**  
Selected applicant domiciles: difference between cycle and 2018 cycle (at 4 days after A level results day)

- England
- Northern Ireland
- Scotland
- Wales
- EU (excluding UK)
- Not EU



Note: The percentage change is not plotted in the above chart for groups with fewer than 30 placed applicants in any one cycle.

**B.8 Placed applicants at 4 days after A level results day: providers in Northern Ireland**

Placed applicants by domicile (at 4 days after A level results day)

Domicile of applicant	2010	2011	2012	2013	2014	2015	2016	2017	2018	2019
England	180	220	220	230	330	540	290	300	290	270
Northern Ireland	7,640	7,390	7,420	8,310	8,290	7,690	8,240	7,960	7,450	8,100
Scotland	20	20	30	10	20	20	20	30	30	20
Wales	10	10	0	0	10	10	10	10	10	10
EU (excluding UK)	580	420	410	430	460	380	340	350	360	400
Not EU	60	110	150	170	170	140	200	190	250	220

**B.9 Placed applicants at 4 days after A level results day: providers in Northern Ireland**

Selected applicant domiciles: difference between cycle and 2018 cycle (at 4 days after A level results day)

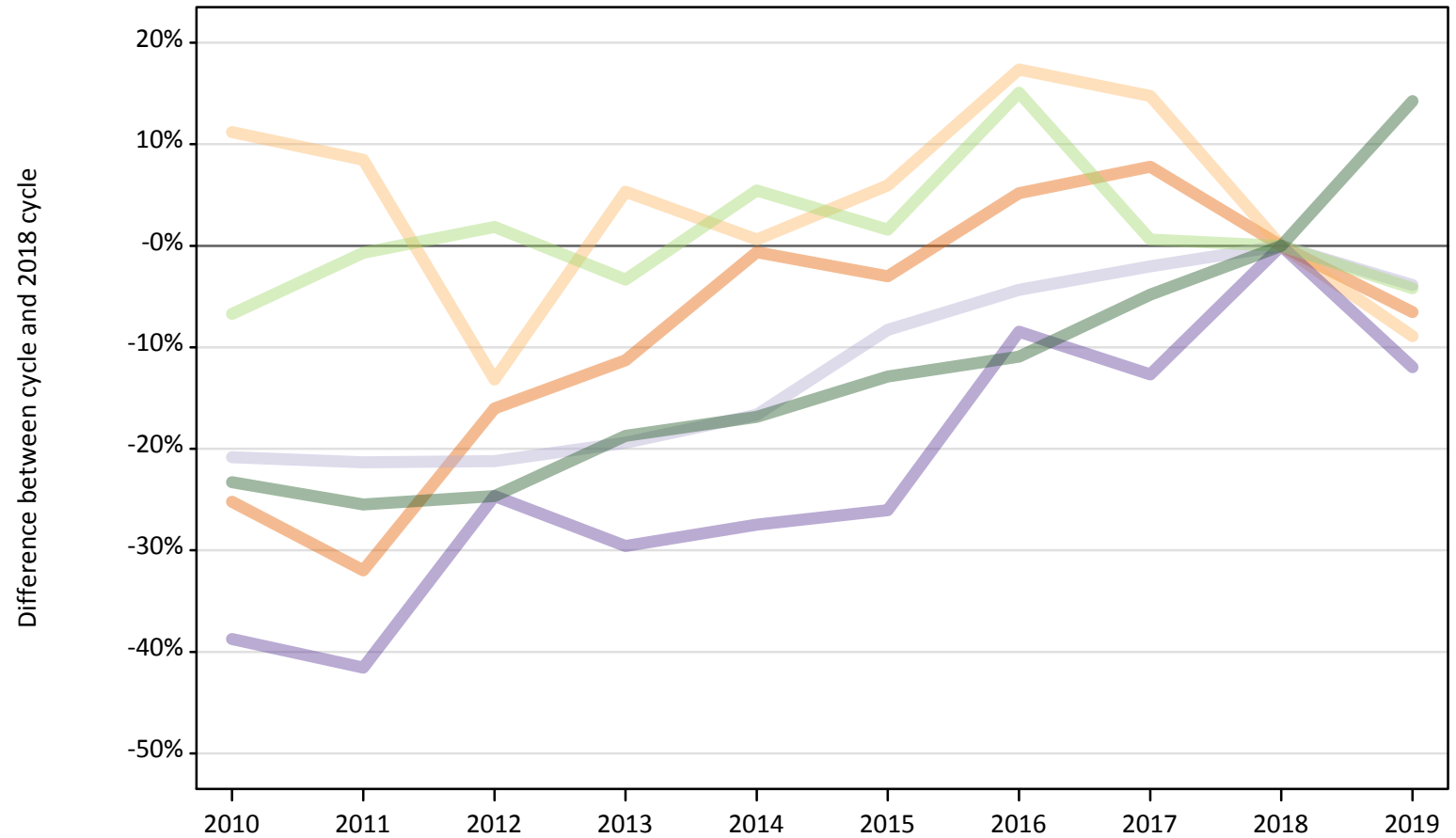
Domicile of applicant	2010	2011	2012	2013	2014	2015	2016	2017	2018	2019
England	-36%	-25%	-22%	-20%	13%	88%	1%	4%	0%	-6%
Northern Ireland	3%	-1%	-0%	12%	11%	3%	11%	7%	0%	9%
Scotland	-12%	-32%	8%	-52%	-36%	-32%	-36%	16%	0%	-28%
Wales						10%		40%	0%	0%
EU (excluding UK)	62%	17%	13%	21%	28%	5%	-5%	-3%	0%	11%
Not EU	-76%	-57%	-38%	-33%	-33%	-42%	-18%	-23%	0%	-10%

Note: The percentage change is not recorded in the above table for groups with fewer than 10 placed applicants in that cycle or in the 2018 cycle.

### B.10 Placed applicants at 4 days after A level results day: providers in Scotland

Selected applicant domiciles: difference between cycle and 2018 cycle (at 4 days after A level results day)

- England
- Northern Ireland
- Scotland
- Wales
- EU (excluding UK)
- Not EU



Note: The percentage change is not plotted in the above chart for groups with fewer than 30 placed applicants in any one cycle.

**B.11 Placed applicants at 4 days after A level results day: providers in Scotland**

Placed applicants by domicile (at 4 days after A level results day)

Domicile of applicant	2010	2011	2012	2013	2014	2015	2016	2017	2018	2019
England	3,390	3,090	3,810	4,020	4,510	4,400	4,770	4,890	4,540	4,240
Northern Ireland	1,060	1,040	830	1,010	960	1,010	1,120	1,100	960	870
Scotland	25,540	25,390	25,420	26,010	26,890	29,590	30,870	31,610	32,260	31,010
Wales	90	80	110	100	100	110	130	120	140	130
EU (excluding UK)	3,690	3,920	4,020	3,820	4,170	4,010	4,550	3,970	3,950	3,790
Not EU	2,170	2,110	2,130	2,300	2,350	2,460	2,520	2,690	2,830	3,230

**B.12 Placed applicants at 4 days after A level results day: providers in Scotland**

Selected applicant domiciles: difference between cycle and 2018 cycle (at 4 days after A level results day)

Domicile of applicant	2010	2011	2012	2013	2014	2015	2016	2017	2018	2019
England	-25%	-32%	-16%	-11%	-1%	-3%	5%	8%	0%	-7%
Northern Ireland	11%	8%	-13%	5%	1%	6%	17%	15%	0%	-9%
Scotland	-21%	-21%	-21%	-19%	-17%	-8%	-4%	-2%	0%	-4%
Wales	-39%	-42%	-25%	-30%	-27%	-26%	-8%	-13%	0%	-12%
EU (excluding UK)	-7%	-1%	2%	-3%	5%	2%	15%	1%	0%	-4%
Not EU	-23%	-25%	-25%	-19%	-17%	-13%	-11%	-5%	0%	14%

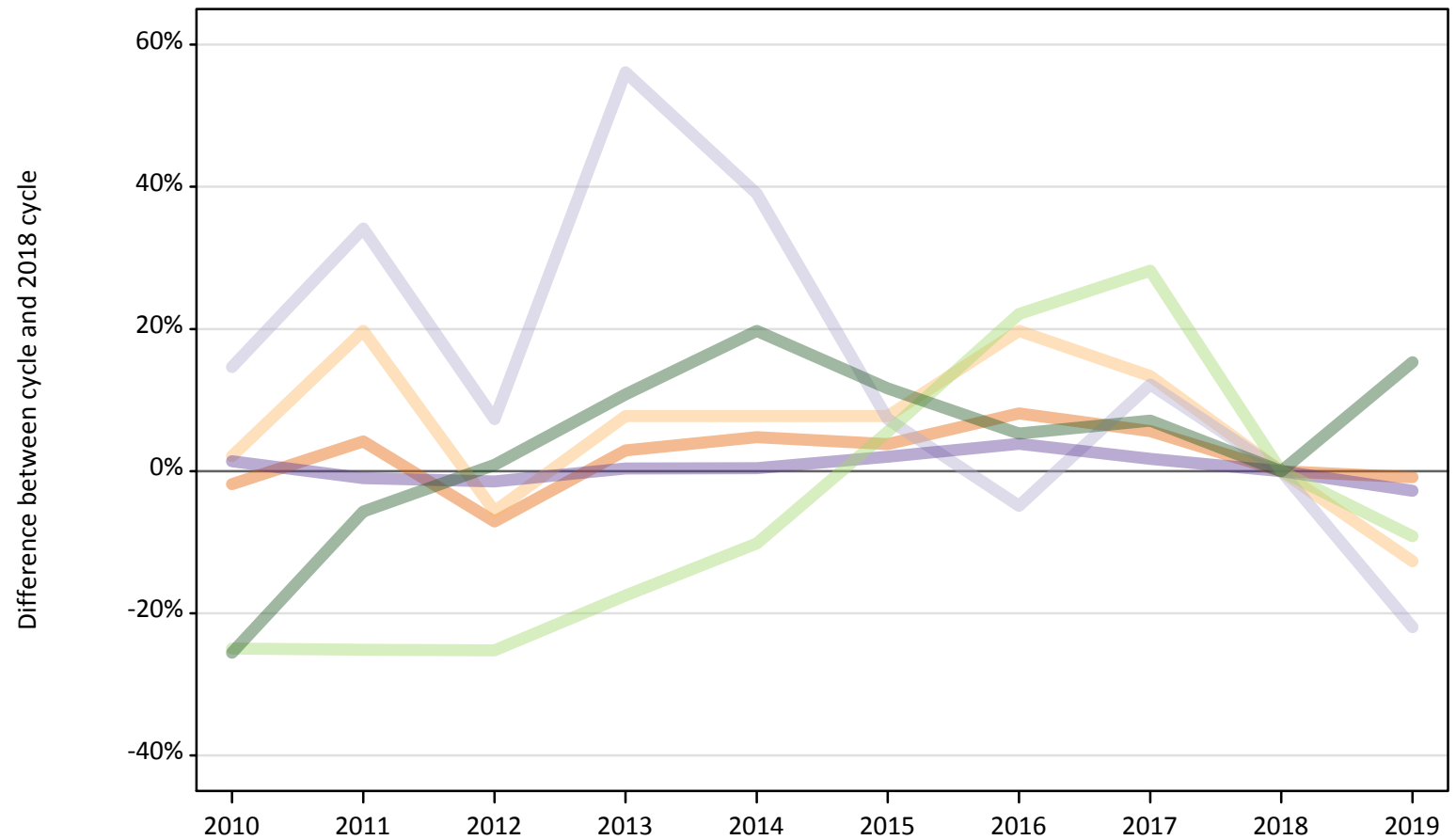
Note: The percentage change is not recorded in the above table for groups with fewer than 10 placed applicants in that cycle or in the 2018 cycle.



### B.13 Placed applicants at 4 days after A level results day: providers in Wales

Selected applicant domiciles: difference between cycle and 2018 cycle (at 4 days after A level results day)

- England
- Northern Ireland
- Scotland
- Wales
- EU (excluding UK)
- Not EU



Note: The percentage change is not plotted in the above chart for groups with fewer than 30 placed applicants in any one cycle.

**B.14 Placed applicants at 4 days after A level results day: providers in Wales**

Placed applicants by domicile (at 4 days after A level results day)

Domicile of applicant	2010	2011	2012	2013	2014	2015	2016	2017	2018	2019
England	9,350	9,920	8,840	9,800	9,970	9,880	10,290	10,050	9,520	9,440
Northern Ireland	150	170	130	150	150	150	170	160	140	120
Scotland	50	60	40	60	60	40	40	50	40	30
Wales	10,060	9,820	9,780	9,960	9,960	10,120	10,300	10,090	9,920	9,650
EU (excluding UK)	790	790	790	870	940	1,110	1,280	1,350	1,050	950
Not EU	690	880	940	1,030	1,110	1,040	980	990	930	1,070

**B.15 Placed applicants at 4 days after A level results day: providers in Wales**

Selected applicant domiciles: difference between cycle and 2018 cycle (at 4 days after A level results day)

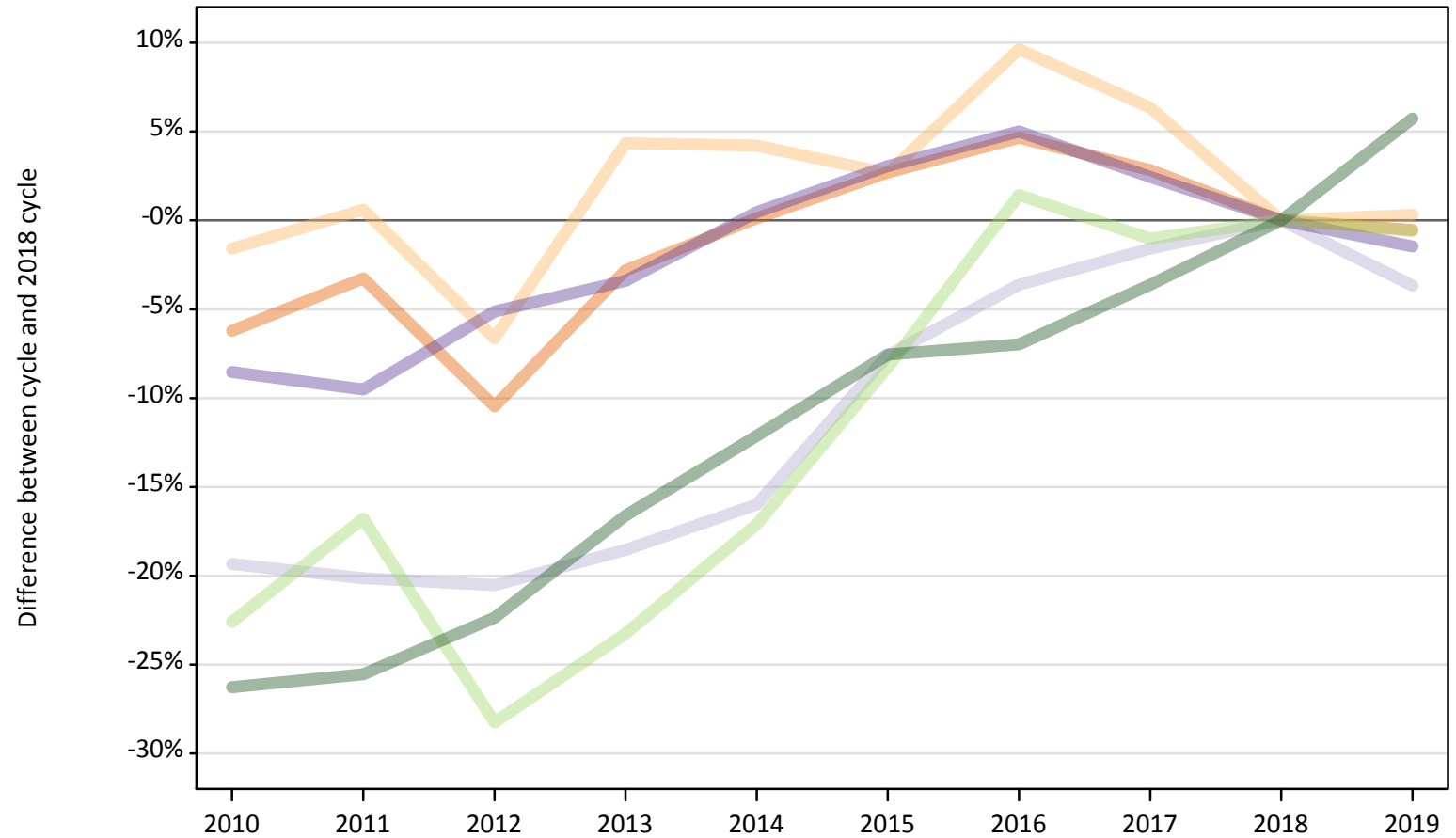
Domicile of applicant	2010	2011	2012	2013	2014	2015	2016	2017	2018	2019
England	-2%	4%	-7%	3%	5%	4%	8%	6%	0%	-1%
Northern Ireland	2%	20%	-6%	8%	8%	8%	20%	13%	0%	-13%
Scotland	15%	34%	7%	56%	39%	7%	-5%	12%	0%	-22%
Wales	1%	-1%	-1%	0%	0%	2%	4%	2%	0%	-3%
EU (excluding UK)	-25%	-25%	-25%	-18%	-10%	6%	22%	28%	0%	-9%
Not EU	-26%	-6%	1%	11%	20%	12%	5%	7%	0%	15%

Note: The percentage change is not recorded in the above table for groups with fewer than 10 placed applicants in that cycle or in the 2018 cycle.

### B.16 Placed applicants at 4 days after A level results day: providers in the UK

Selected applicant domiciles: difference between cycle and 2018 cycle (at 4 days after A level results day)

- England
- Northern Ireland
- Scotland
- Wales
- EU (excluding UK)
- Not EU



Note: The percentage change is not plotted in the above chart for groups with fewer than 30 placed applicants in any one cycle.

**B.17 Placed applicants at 4 days after A level results day: providers in the UK**

Placed applicants by domicile (at 4 days after A level results day)

Domicile of applicant	2010	2011	2012	2013	2014	2015	2016	2017	2018	2019
England	307,870	317,510	293,890	319,000	328,640	337,090	343,510	337,540	328,230	326,480
Northern Ireland	11,910	12,180	11,300	12,630	12,610	12,420	13,270	12,870	12,100	12,140
Scotland	27,200	26,940	26,810	27,480	28,340	31,170	32,510	33,190	33,730	32,490
Wales	16,040	15,860	16,630	16,930	17,610	18,070	18,410	17,960	17,530	17,270
EU (excluding UK)	21,550	23,170	19,980	21,370	23,080	25,540	28,240	27,560	27,840	27,670
Not EU	25,040	25,290	26,380	28,320	29,850	31,400	31,600	32,740	33,970	35,910

**B.18 Placed applicants at 4 days after A level results day: providers in the UK**

Selected applicant domiciles: difference between cycle and 2018 cycle (at 4 days after A level results day)

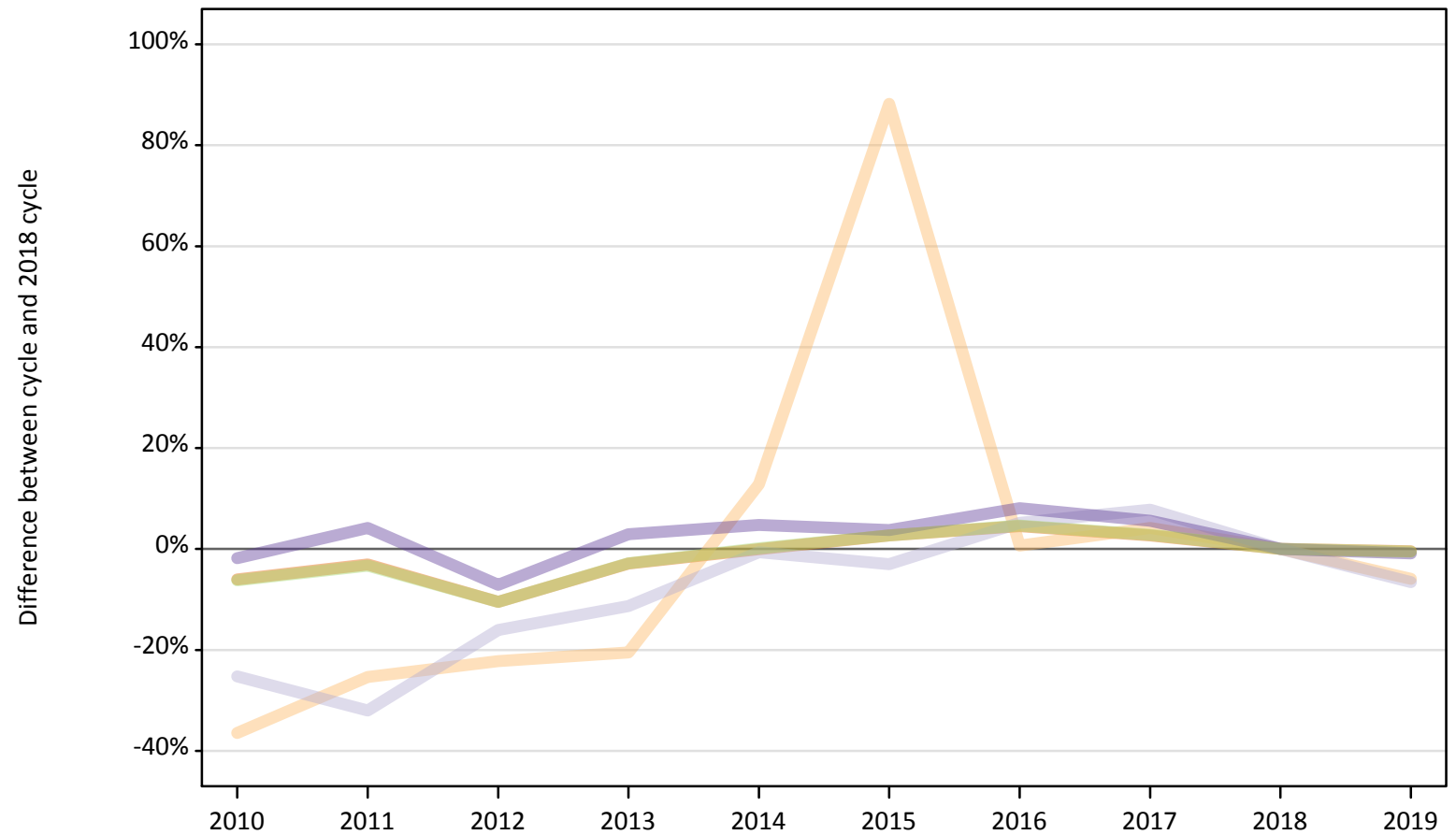
Domicile of applicant	2010	2011	2012	2013	2014	2015	2016	2017	2018	2019
England	-6%	-3%	-10%	-3%	0%	3%	5%	3%	0%	-1%
Northern Ireland	-2%	1%	-7%	4%	4%	3%	10%	6%	0%	0%
Scotland	-19%	-20%	-21%	-19%	-16%	-8%	-4%	-2%	0%	-4%
Wales	-9%	-10%	-5%	-3%	0%	3%	5%	2%	0%	-1%
EU (excluding UK)	-23%	-17%	-28%	-23%	-17%	-8%	1%	-1%	0%	-1%
Not EU	-26%	-26%	-22%	-17%	-12%	-8%	-7%	-4%	0%	6%

Note: The percentage change is not recorded in the above table for groups with fewer than 10 placed applicants in that cycle or in the 2018 cycle.

### B.19 Placed applicants at 4 days after A level results day: domiciled in England

Selected provider countries: difference between cycle and 2018 cycle (at 4 days after A level results day)

- England
- Northern Ireland
- Scotland
- Wales
- UK



Note: The percentage change is not plotted in the above chart for groups with fewer than 30 placed applicants in any one cycle.

**B.20 Placed applicants at 4 days after A level results day: domiciled in England**

Placed applicants by provider country (at 4 days after A level results day)

Country of provider	2010	2011	2012	2013	2014	2015	2016	2017	2018	2019
England	294,950	304,300	281,020	304,950	313,840	322,270	328,160	322,300	313,890	312,540
Northern Ireland	180	220	220	230	330	540	290	300	290	270
Scotland	3,390	3,090	3,810	4,020	4,510	4,400	4,770	4,890	4,540	4,240
Wales	9,350	9,920	8,840	9,800	9,970	9,880	10,290	10,050	9,520	9,440
UK	307,870	317,510	293,890	319,000	328,640	337,090	343,510	337,540	328,230	326,480

**B.21 Placed applicants at 4 days after A level results day: domiciled in England**

Selected provider countries: difference between cycle and 2018 cycle (at 4 days after A level results day)

Country of provider	2010	2011	2012	2013	2014	2015	2016	2017	2018	2019
England	-6%	-3%	-10%	-3%	-0%	3%	5%	3%	0%	-0%
Northern Ireland	-36%	-25%	-22%	-20%	13%	88%	1%	4%	0%	-6%
Scotland	-25%	-32%	-16%	-11%	-1%	-3%	5%	8%	0%	-7%
Wales	-2%	4%	-7%	3%	5%	4%	8%	6%	0%	-1%
UK	-6%	-3%	-10%	-3%	0%	3%	5%	3%	0%	-1%

Note: The percentage change is not recorded in the above table for groups with fewer than 10 placed applicants in that cycle or in the 2018 cycle.

**B.22 Placed applicants at 4 days after A level results day: domiciled in Northern Ireland**  
Selected provider countries: difference between cycle and 2018 cycle (at 4 days after A level results day)

- England
- Northern Ireland
- Scotland
- Wales
- UK



Note: The percentage change is not plotted in the above chart for groups with fewer than 30 placed applicants in any one cycle.

### B.23 Placed applicants at 4 days after A level results day: domiciled in Northern Ireland

Placed applicants by provider country (at 4 days after A level results day)

Country of provider	2010	2011	2012	2013	2014	2015	2016	2017	2018	2019
England	3,060	3,580	2,920	3,160	3,200	3,570	3,740	3,650	3,560	3,040
Northern Ireland	7,640	7,390	7,420	8,310	8,290	7,690	8,240	7,960	7,450	8,100
Scotland	1,060	1,040	830	1,010	960	1,010	1,120	1,100	960	870
Wales	150	170	130	150	150	150	170	160	140	120
UK	11,910	12,180	11,300	12,630	12,610	12,420	13,270	12,870	12,100	12,140

### B.24 Placed applicants at 4 days after A level results day: domiciled in Northern Ireland

Selected provider countries: difference between cycle and 2018 cycle (at 4 days after A level results day)

Country of provider	2010	2011	2012	2013	2014	2015	2016	2017	2018	2019
England	-14%	1%	-18%	-11%	-10%	0%	5%	3%	0%	-14%
Northern Ireland	3%	-1%	-0%	12%	11%	3%	11%	7%	0%	9%
Scotland	11%	8%	-13%	5%	1%	6%	17%	15%	0%	-9%
Wales	2%	20%	-6%	8%	8%	8%	20%	13%	0%	-13%
UK	-2%	1%	-7%	4%	4%	3%	10%	6%	0%	0%

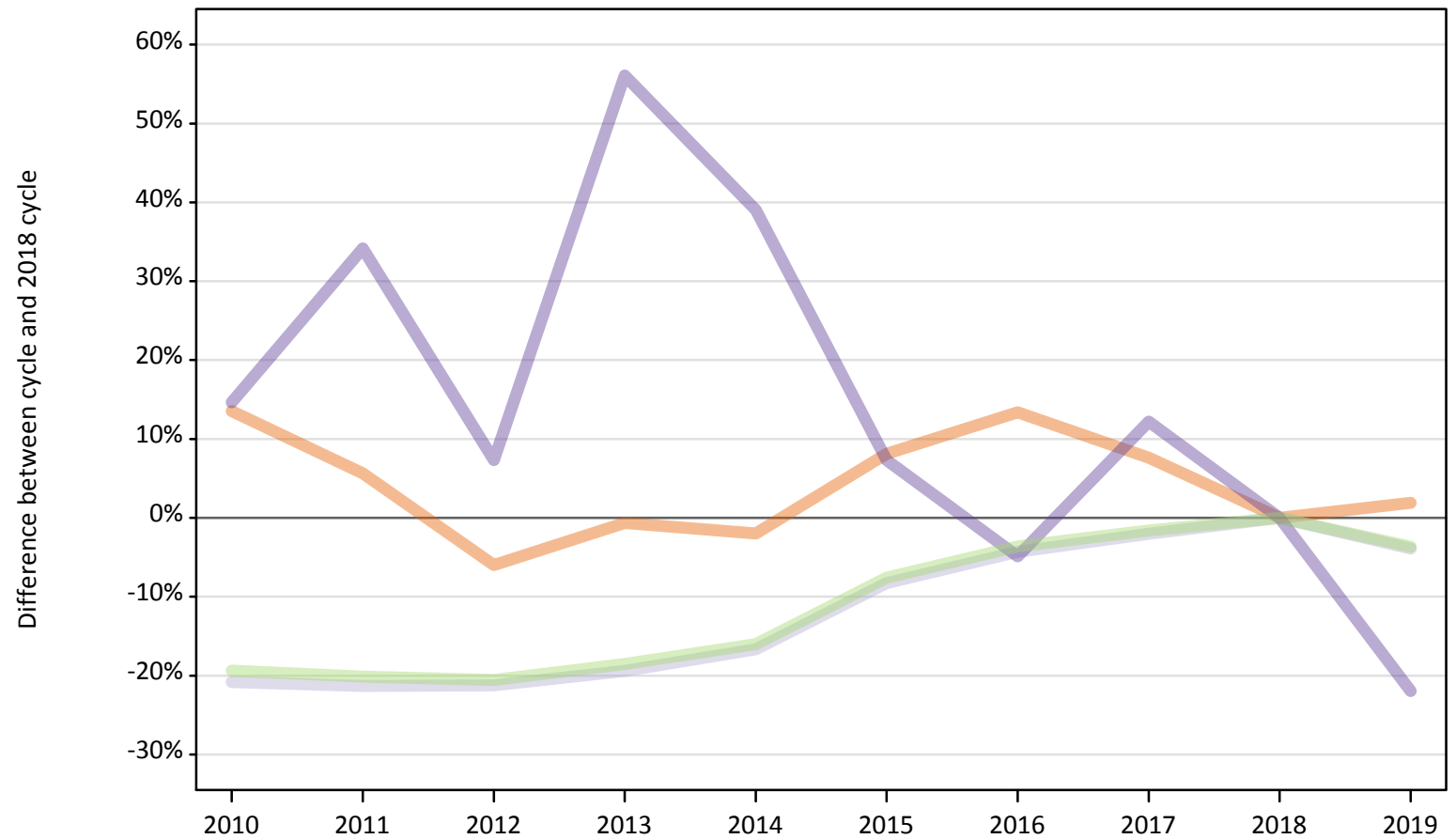
Note: The percentage change is not recorded in the above table for groups with fewer than 10 placed applicants in that cycle or in the 2018 cycle.



### B.25 Placed applicants at 4 days after A level results day: domiciled in Scotland

Selected provider countries: difference between cycle and 2018 cycle (at 4 days after A level results day)

- England
- Northern Ireland
- Scotland
- Wales
- UK



Note: The percentage change is not plotted in the above chart for groups with fewer than 30 placed applicants in any one cycle.

**B.26 Placed applicants at 4 days after A level results day: domiciled in Scotland**

Placed applicants by provider country (at 4 days after A level results day)

Country of provider	2010	2011	2012	2013	2014	2015	2016	2017	2018	2019
England	1,590	1,480	1,320	1,390	1,380	1,520	1,590	1,510	1,400	1,430
Northern Ireland	20	20	30	10	20	20	20	30	30	20
Scotland	25,540	25,390	25,420	26,010	26,890	29,590	30,870	31,610	32,260	31,010
Wales	50	60	40	60	60	40	40	50	40	30
UK	27,200	26,940	26,810	27,480	28,340	31,170	32,510	33,190	33,730	32,490

**B.27 Placed applicants at 4 days after A level results day: domiciled in Scotland**

Selected provider countries: difference between cycle and 2018 cycle (at 4 days after A level results day)

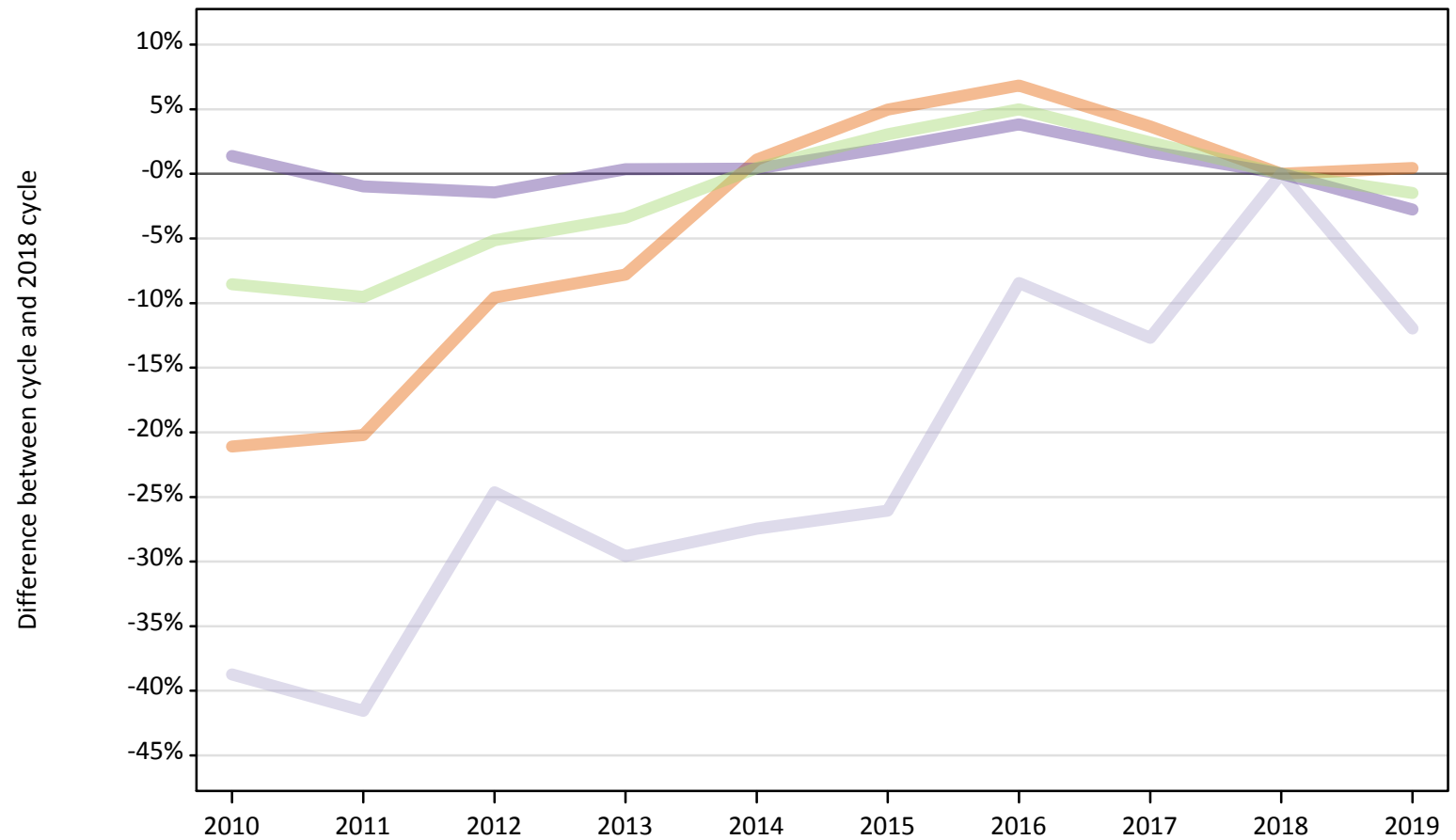
Country of provider	2010	2011	2012	2013	2014	2015	2016	2017	2018	2019
England	14%	6%	-6%	-1%	-2%	8%	13%	8%	0%	2%
Northern Ireland	-12%	-32%	8%	-52%	-36%	-32%	-36%	16%	0%	-28%
Scotland	-21%	-21%	-21%	-19%	-17%	-8%	-4%	-2%	0%	-4%
Wales	15%	34%	7%	56%	39%	7%	-5%	12%	0%	-22%
UK	-19%	-20%	-21%	-19%	-16%	-8%	-4%	-2%	0%	-4%

Note: The percentage change is not recorded in the above table for groups with fewer than 10 placed applicants in that cycle or in the 2018 cycle.

### B.28 Placed applicants at 4 days after A level results day: domiciled in Wales

Selected provider countries: difference between cycle and 2018 cycle (at 4 days after A level results day)

- England
- Northern Ireland
- Scotland
- Wales
- UK



Note: The percentage change is not plotted in the above chart for groups with fewer than 30 placed applicants in any one cycle.

**B.29 Placed applicants at 4 days after A level results day: domiciled in Wales**

Placed applicants by provider country (at 4 days after A level results day)

Country of provider	2010	2011	2012	2013	2014	2015	2016	2017	2018	2019
England	5,880	5,950	6,740	6,880	7,540	7,830	7,970	7,730	7,460	7,490
Northern Ireland	10	10	0	0	10	10	10	10	10	10
Scotland	90	80	110	100	100	110	130	120	140	130
Wales	10,060	9,820	9,780	9,960	9,960	10,120	10,300	10,090	9,920	9,650
UK	16,040	15,860	16,630	16,930	17,610	18,070	18,410	17,960	17,530	17,270

**B.30 Placed applicants at 4 days after A level results day: domiciled in Wales**

Selected provider countries: difference between cycle and 2018 cycle (at 4 days after A level results day)

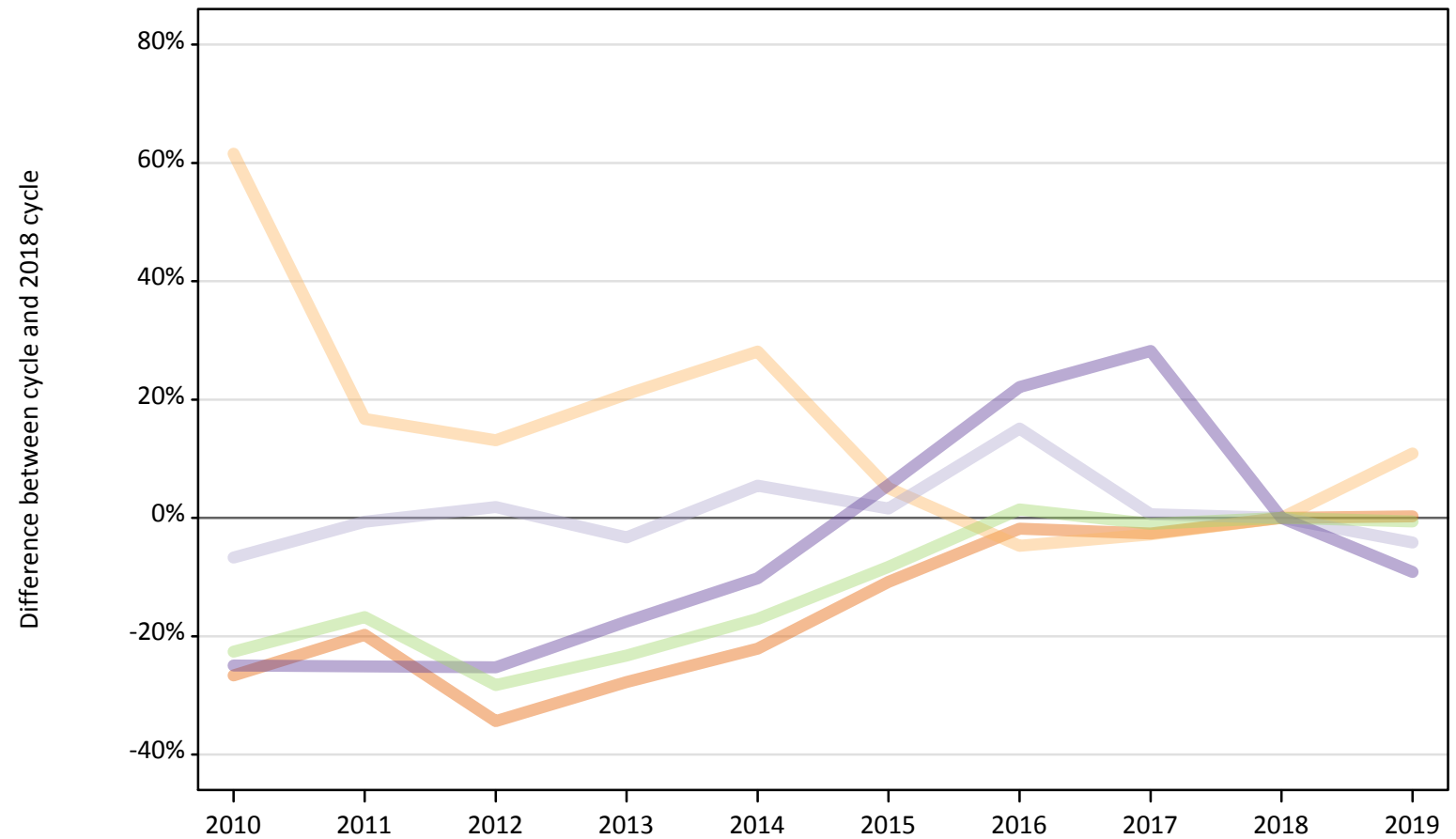
Country of provider	2010	2011	2012	2013	2014	2015	2016	2017	2018	2019
England	-21%	-20%	-10%	-8%	1%	5%	7%	4%	0%	0%
Northern Ireland						10%		40%	0%	0%
Scotland	-39%	-42%	-25%	-30%	-27%	-26%	-8%	-13%	0%	-12%
Wales	1%	-1%	-1%	0%	0%	2%	4%	2%	0%	-3%
UK	-9%	-10%	-5%	-3%	0%	3%	5%	2%	0%	-1%

Note: The percentage change is not recorded in the above table for groups with fewer than 10 placed applicants in that cycle or in the 2018 cycle.

### B.31 Placed applicants at 4 days after A level results day: domiciled in EU (excluding UK)

Selected provider countries: difference between cycle and 2018 cycle (at 4 days after A level results day)

- England
- Northern Ireland
- Scotland
- Wales
- UK



Note: The percentage change is not plotted in the above chart for groups with fewer than 30 placed applicants in any one cycle.

### B.32 Placed applicants at 4 days after A level results day: domiciled in EU (excluding UK)

Placed applicants by provider country (at 4 days after A level results day)

Country of provider	2010	2011	2012	2013	2014	2015	2016	2017	2018	2019
England	16,500	18,040	14,760	16,250	17,510	20,040	22,070	21,890	22,480	22,540
Northern Ireland	580	420	410	430	460	380	340	350	360	400
Scotland	3,690	3,920	4,020	3,820	4,170	4,010	4,550	3,970	3,950	3,790
Wales	790	790	790	870	940	1,110	1,280	1,350	1,050	950
UK	21,550	23,170	19,980	21,370	23,080	25,540	28,240	27,560	27,840	27,670

### B.33 Placed applicants at 4 days after A level results day: domiciled in EU (excluding UK)

Selected provider countries: difference between cycle and 2018 cycle (at 4 days after A level results day)

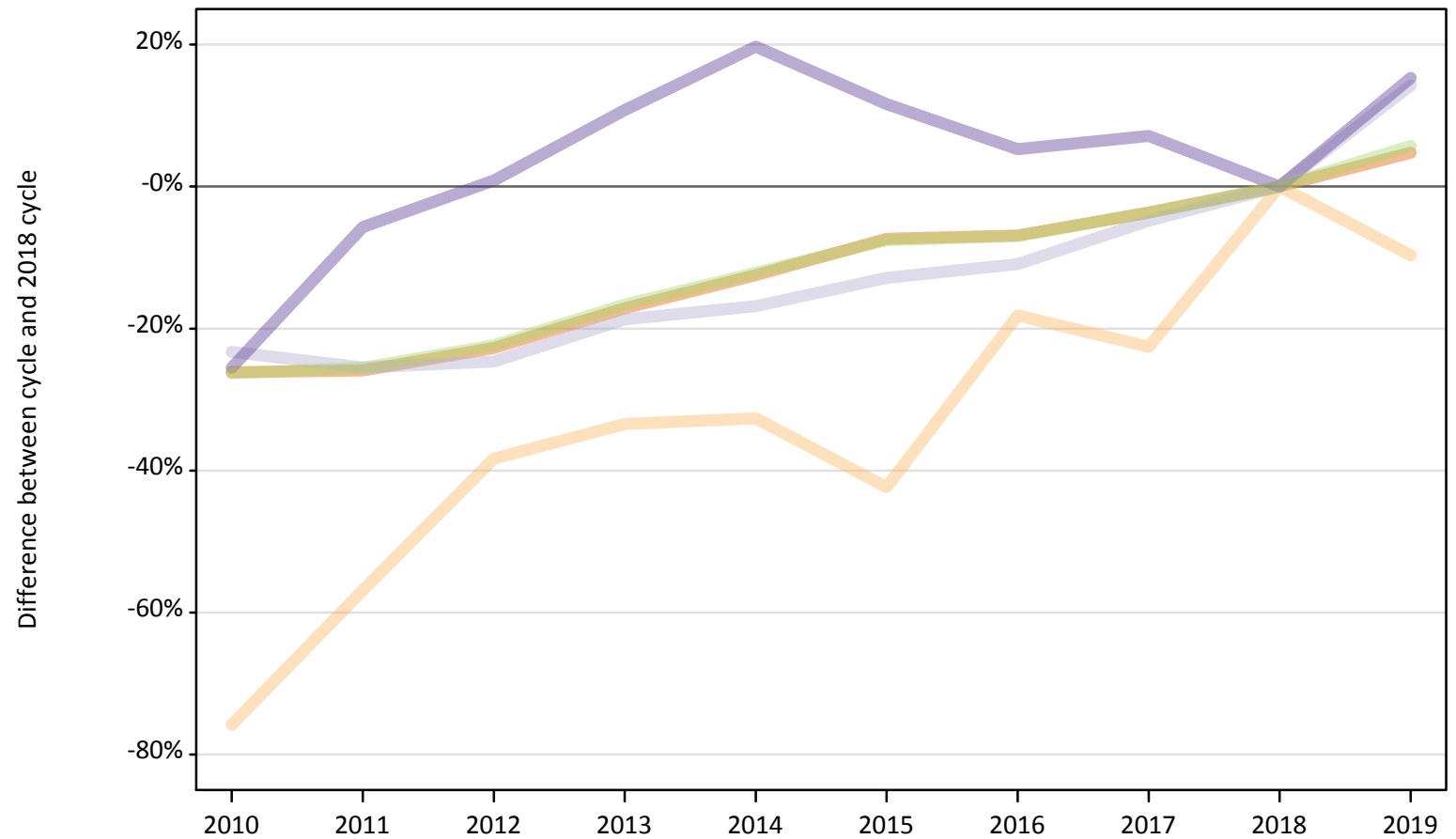
Country of provider	2010	2011	2012	2013	2014	2015	2016	2017	2018	2019
England	-27%	-20%	-34%	-28%	-22%	-11%	-2%	-3%	0%	0%
Northern Ireland	62%	17%	13%	21%	28%	5%	-5%	-3%	0%	11%
Scotland	-7%	-1%	2%	-3%	5%	2%	15%	1%	0%	-4%
Wales	-25%	-25%	-25%	-18%	-10%	6%	22%	28%	0%	-9%
UK	-23%	-17%	-28%	-23%	-17%	-8%	1%	-1%	0%	-1%

Note: The percentage change is not recorded in the above table for groups with fewer than 10 placed applicants in that cycle or in the 2018 cycle.

### B.34 Placed applicants at 4 days after A level results day: domiciled in Not EU

Selected provider countries: difference between cycle and 2018 cycle (at 4 days after A level results day)

- England
- Northern Ireland
- Scotland
- Wales
- UK



Note: The percentage change is not plotted in the above chart for groups with fewer than 30 placed applicants in any one cycle.

### B.35 Placed applicants at 4 days after A level results day: domiciled in Not EU

Placed applicants by provider country (at 4 days after A level results day)

Country of provider	2010	2011	2012	2013	2014	2015	2016	2017	2018	2019
England	22,120	22,200	23,160	24,830	26,220	27,760	27,900	28,860	29,960	31,390
Northern Ireland	60	110	150	170	170	140	200	190	250	220
Scotland	2,170	2,110	2,130	2,300	2,350	2,460	2,520	2,690	2,830	3,230
Wales	690	880	940	1,030	1,110	1,040	980	990	930	1,070
UK	25,040	25,290	26,380	28,320	29,850	31,400	31,600	32,740	33,970	35,910

### B.36 Placed applicants at 4 days after A level results day: domiciled in Not EU

Selected provider countries: difference between cycle and 2018 cycle (at 4 days after A level results day)

Country of provider	2010	2011	2012	2013	2014	2015	2016	2017	2018	2019
England	-26%	-26%	-23%	-17%	-12%	-7%	-7%	-4%	0%	5%
Northern Ireland	-76%	-57%	-38%	-33%	-33%	-42%	-18%	-23%	0%	-10%
Scotland	-23%	-25%	-25%	-19%	-17%	-13%	-11%	-5%	0%	14%
Wales	-26%	-6%	1%	11%	20%	12%	5%	7%	0%	15%
UK	-26%	-26%	-22%	-17%	-12%	-8%	-7%	-4%	0%	6%

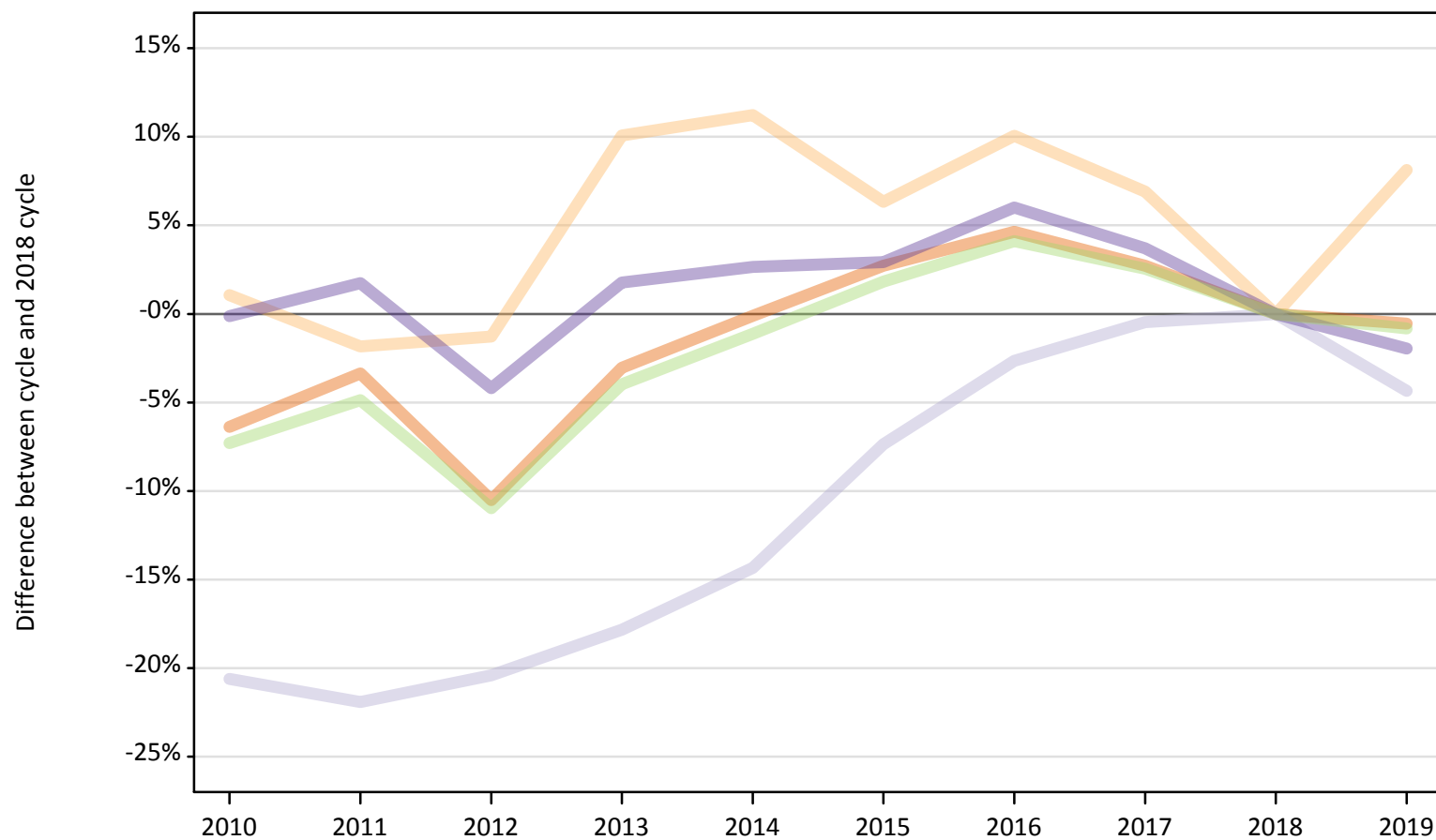
Note: The percentage change is not recorded in the above table for groups with fewer than 10 placed applicants in that cycle or in the 2018 cycle.



### B.37 Placed applicants at 4 days after A level results day: domiciled in UK

Selected provider countries: difference between cycle and 2018 cycle (at 4 days after A level results day)

- England
- Northern Ireland
- Scotland
- Wales
- UK



Note: The percentage change is not plotted in the above chart for groups with fewer than 30 placed applicants in any one cycle.

**B.38 Placed applicants at 4 days after A level results day: domiciled in UK**

Placed applicants by provider country (at 4 days after A level results day)

Country of provider	2010	2011	2012	2013	2014	2015	2016	2017	2018	2019
England	305,490	315,310	292,000	316,380	325,960	335,180	341,460	335,190	326,310	324,500
Northern Ireland	7,850	7,630	7,670	8,550	8,640	8,260	8,550	8,310	7,770	8,400
Scotland	30,080	29,590	30,160	31,140	32,460	35,110	36,890	37,720	37,900	36,250
Wales	19,600	19,960	18,800	19,970	20,150	20,200	20,800	20,350	19,620	19,240
UK	363,020	372,490	348,630	376,040	387,200	398,750	407,700	401,560	391,600	388,390

**B.39 Placed applicants at 4 days after A level results day: domiciled in UK**

Selected provider countries: difference between cycle and 2018 cycle (at 4 days after A level results day)

Country of provider	2010	2011	2012	2013	2014	2015	2016	2017	2018	2019
England	-6%	-3%	-11%	-3%	-0%	3%	5%	3%	0%	-1%
Northern Ireland	1%	-2%	-1%	10%	11%	6%	10%	7%	0%	8%
Scotland	-21%	-22%	-20%	-18%	-14%	-7%	-3%	-0%	0%	-4%
Wales	-0%	2%	-4%	2%	3%	3%	6%	4%	0%	-2%
UK	-7%	-5%	-11%	-4%	-1%	2%	4%	3%	0%	-1%

Note: The percentage change is not recorded in the above table for groups with fewer than 10 placed applicants in that cycle or in the 2018 cycle.