

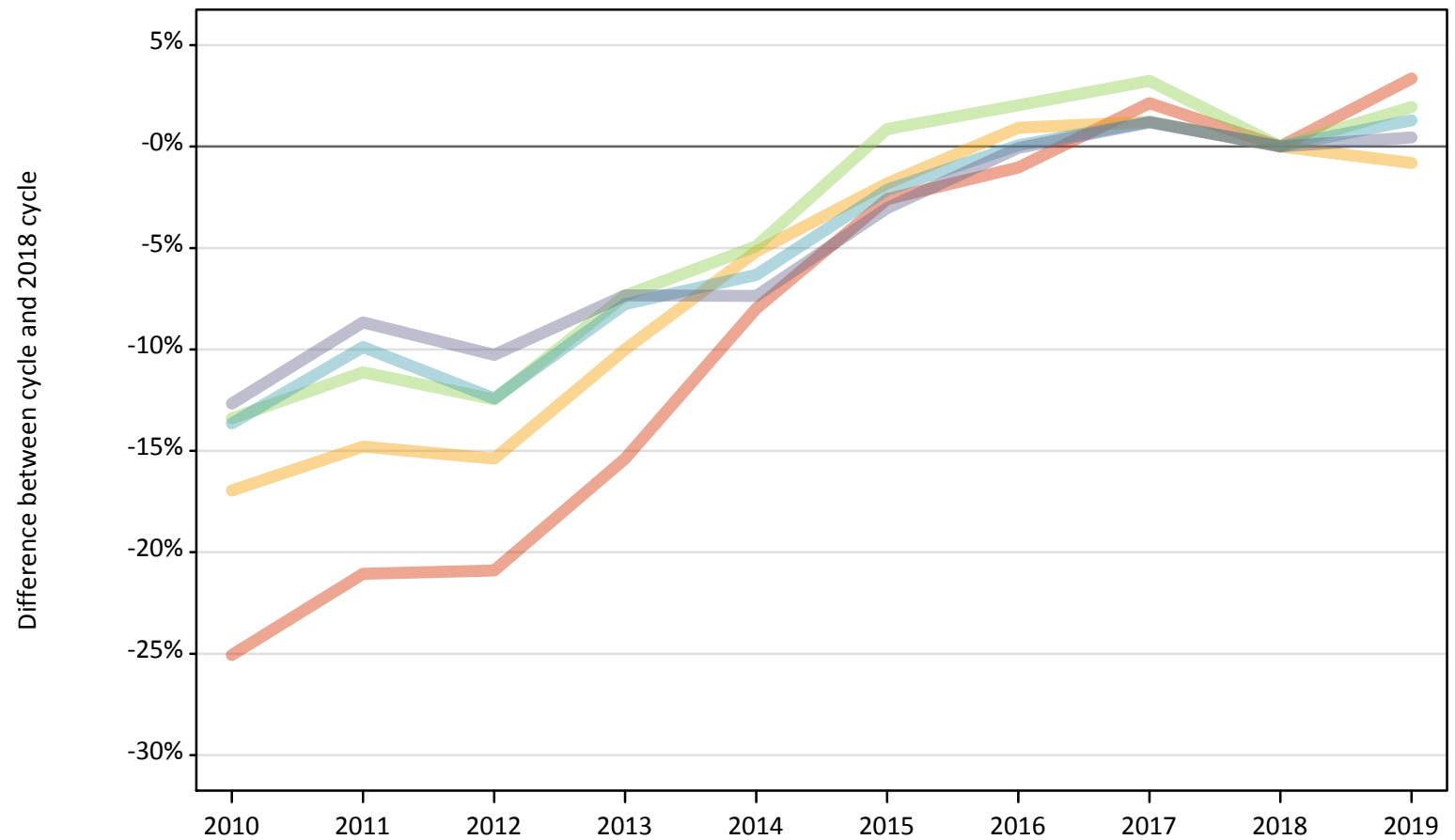
# Daily Clearing Analysis: POLAR4

Analysis at 00:05 on Monday 19 August 2019 (4 days after A level results day)

P.1 Placed 18 year old applicants from England by POLAR4 quintile: 4 days after A level results day

Placed 18 year old applicants: change relative to 2018 cycle totals

- Quintile 1
- Quintile 2
- Quintile 3
- Quintile 4
- Quintile 5



Note: The percentage change is not plotted in the above chart for groups with fewer than 30 placed applicants in any one cycle.

### P.2 Placed 18 year old applicants from England by POLAR4 quintile: 4 days after A level results day

Applicant Status	POLAR4	2010	2011	2012	2013	2014	2015	2016	2017	2018	2019
Placed	Quintile 1	15,670	16,510	16,540	17,700	19,240	20,370	20,700	21,360	20,910	21,620
	Quintile 2	24,300	24,930	24,750	26,330	27,740	28,720	29,520	29,610	29,250	29,020
	Quintile 3	30,790	31,600	31,120	32,940	33,800	35,860	36,280	36,710	35,550	36,250
	Quintile 4	38,270	39,940	38,810	40,870	41,520	43,370	44,340	44,860	44,320	44,890
	Quintile 5	55,560	58,100	57,080	58,950	58,940	61,690	63,580	64,380	63,610	63,900

### P.3 Placed 18 year old applicants from England by POLAR4 quintile: 4 days after A level results day

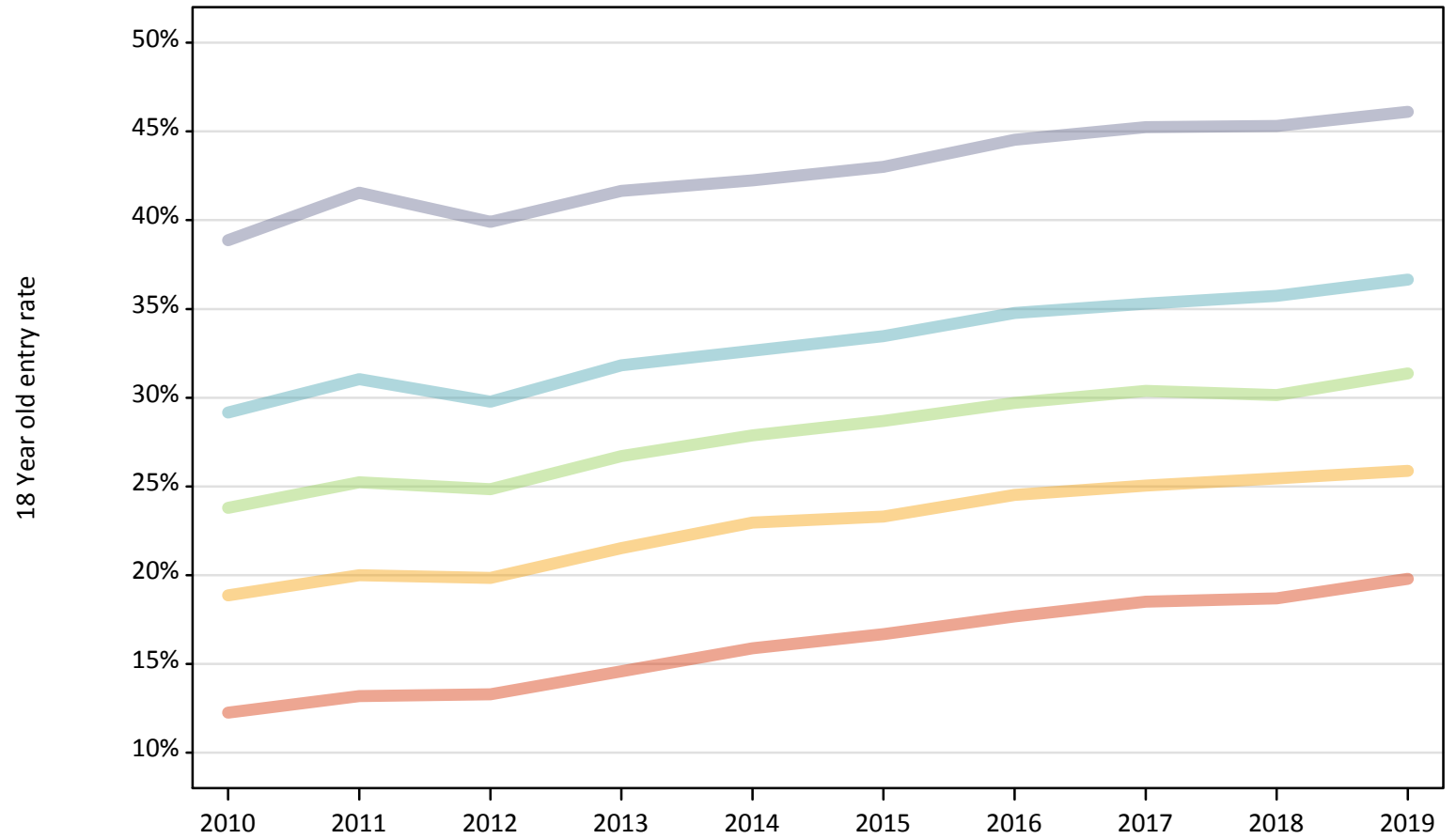
Placed 18 year old applicants: change relative to 2018 cycle totals

Applicant Status	POLAR4	2010	2011	2012	2013	2014	2015	2016	2017	2018	2019
Placed	Quintile 1	-25%	-21%	-21%	-15%	-8%	-3%	-1%	2%	0%	3%
	Quintile 2	-17%	-15%	-15%	-10%	-5%	-2%	1%	1%	0%	-1%
	Quintile 3	-13%	-11%	-12%	-7%	-5%	1%	2%	3%	0%	2%
	Quintile 4	-14%	-10%	-12%	-8%	-6%	-2%	0%	1%	0%	1%
	Quintile 5	-13%	-9%	-10%	-7%	-7%	-3%	-0%	1%	0%	0%

Note: The percentage change is not recorded in the above table for groups with fewer than 10 placed applicants in that cycle or in the 2018 cycle.

**P.4 Placed 18 year old applicants from England by POLAR4 quintile: 4 days after A level results day**  
Placed 18 year old applicants: entry rate

- Quintile 1
- Quintile 2
- Quintile 3
- Quintile 4
- Quintile 5



**P.5 Placed 18 year old applicants from England by POLAR4 quintile: 4 days after A level results day**

Placed 18 year old applicants: entry rate

Applicant Status	POLAR4	2010	2011	2012	2013	2014	2015	2016	2017	2018	2019
Placed	Quintile 1	12.3%	13.2%	13.3%	14.6%	15.9%	16.7%	17.7%	18.5%	18.7%	19.8%
	Quintile 2	18.9%	20.0%	19.8%	21.5%	23.0%	23.3%	24.5%	25.0%	25.4%	25.9%
	Quintile 3	23.8%	25.2%	24.8%	26.7%	27.9%	28.7%	29.7%	30.4%	30.2%	31.4%
	Quintile 4	29.2%	31.0%	29.8%	31.8%	32.6%	33.5%	34.8%	35.3%	35.7%	36.7%
	Quintile 5	38.9%	41.5%	39.9%	41.6%	42.2%	43.0%	44.5%	45.2%	45.3%	46.1%

**P.6 Placed 18 year old applicants from England by POLAR4 quintile: 4 days after A level results day**

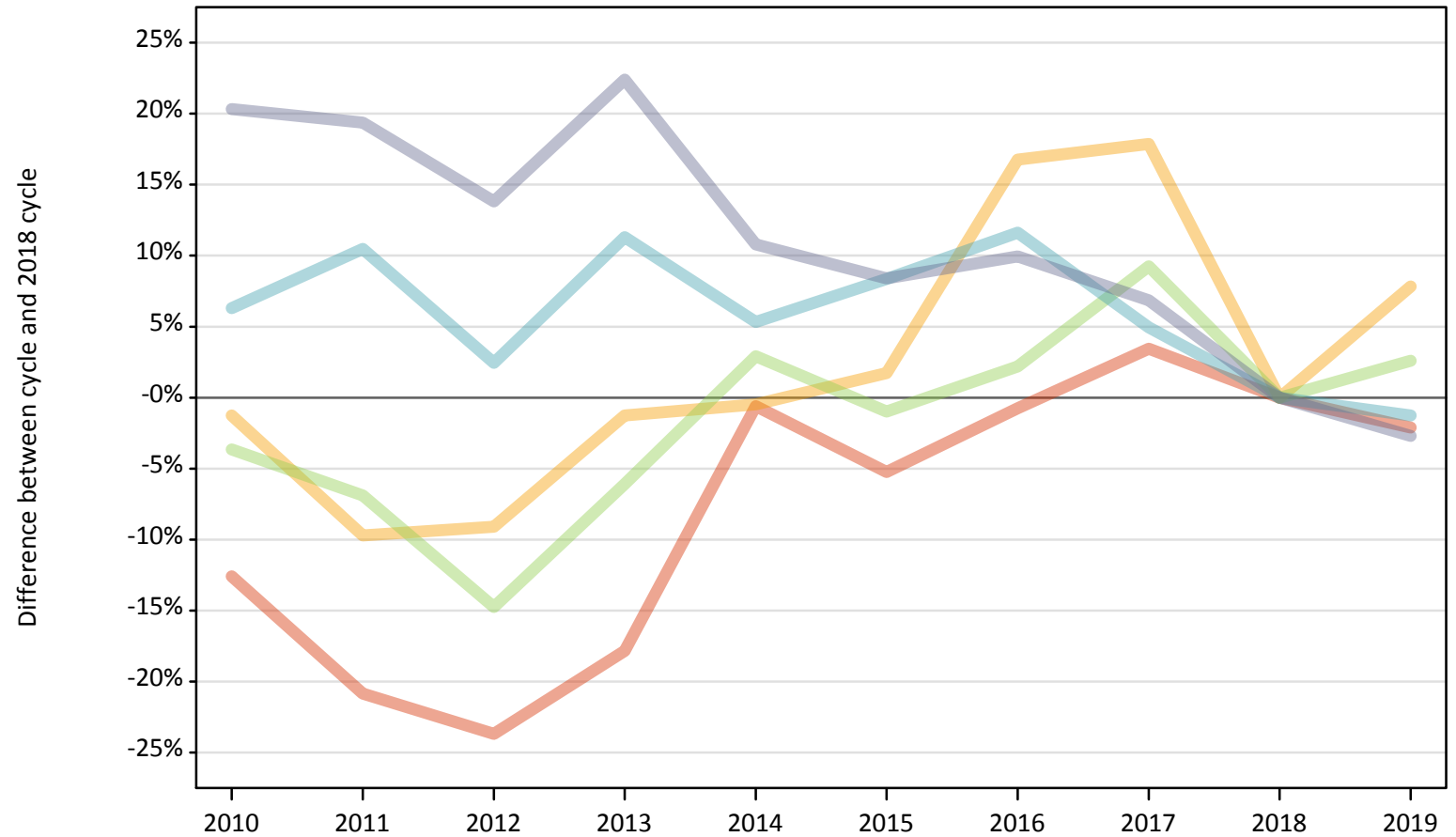
Placed 18 year old applicants: entry rate (indexed to 100 = Quintile 1)

Applicant Status	POLAR4	2010	2011	2012	2013	2014	2015	2016	2017	2018	2019
Placed	Quintile 1	100	100	100	100	100	100	100	100	100	100
	Quintile 2	154	152	149	148	145	140	139	135	136	131
	Quintile 3	194	191	187	183	176	172	168	164	161	158
	Quintile 4	238	235	224	218	206	201	197	191	191	185
	Quintile 5	317	315	300	286	266	258	252	244	242	233

**P.7 Placed 18 year old applicants from Northern Ireland by POLAR4 quintile: 4 days after A level results day**

Placed 18 year old applicants: change relative to 2018 cycle totals

- Quintile 1
- Quintile 2
- Quintile 3
- Quintile 4
- Quintile 5



Note: The percentage change is not plotted in the above chart for groups with fewer than 30 placed applicants in any one cycle.

**P.8 Placed 18 year old applicants from Northern Ireland by POLAR4 quintile: 4 days after A level results day**

Applicant Status	POLAR4	2010	2011	2012	2013	2014	2015	2016	2017	2018	2019
Placed	Quintile 1	580	530	510	550	660	630	660	690	670	650
	Quintile 2	630	580	580	630	640	650	750	750	640	690
	Quintile 3	1,190	1,150	1,050	1,160	1,270	1,220	1,260	1,350	1,230	1,270
	Quintile 4	1,960	2,030	1,890	2,050	1,940	2,000	2,060	1,930	1,840	1,820
	Quintile 5	3,420	3,400	3,240	3,480	3,150	3,080	3,130	3,040	2,850	2,770

**P.9 Placed 18 year old applicants from Northern Ireland by POLAR4 quintile: 4 days after A level results day**

Placed 18 year old applicants: change relative to 2018 cycle totals

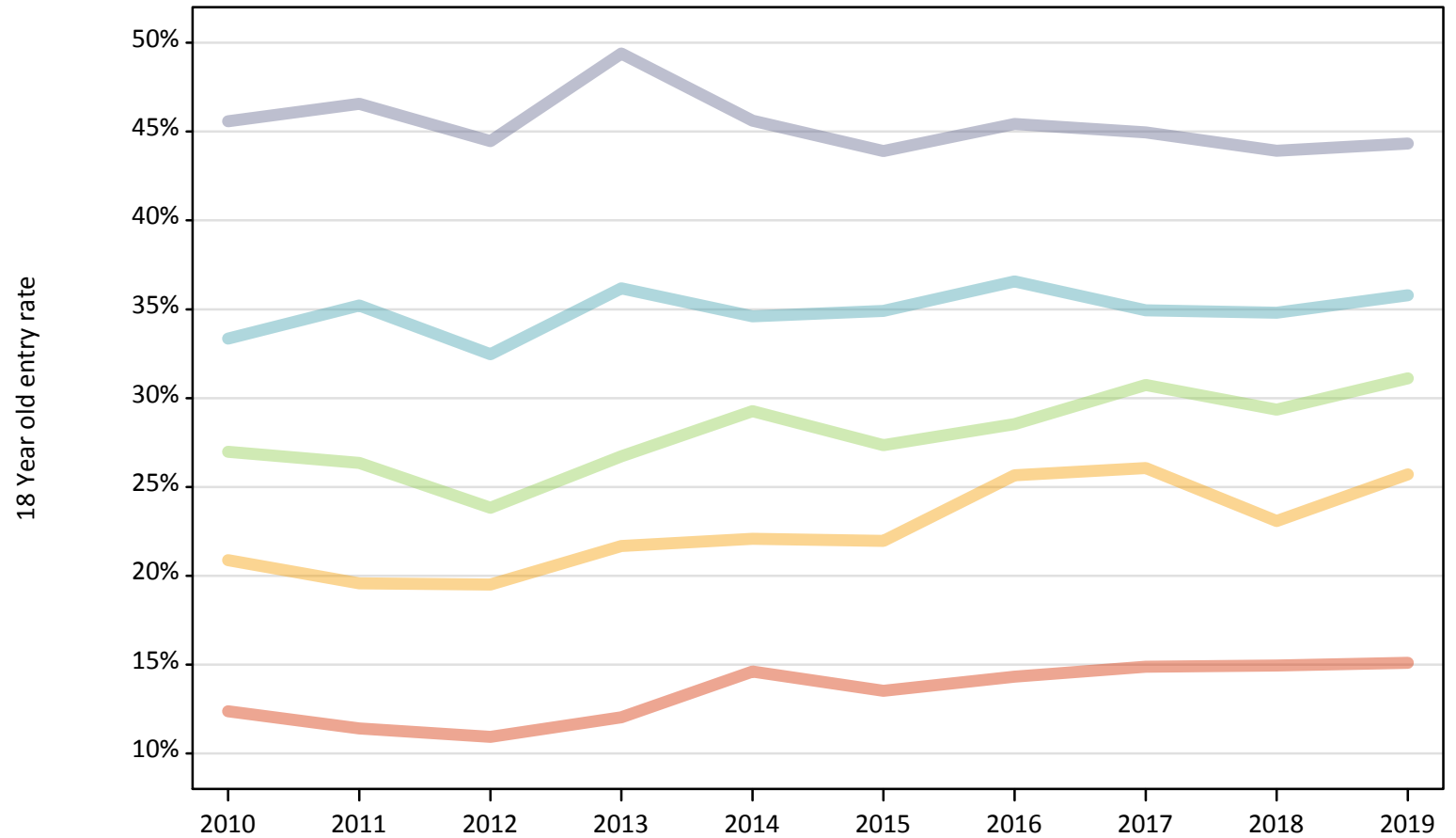
Applicant Status	POLAR4	2010	2011	2012	2013	2014	2015	2016	2017	2018	2019
Placed	Quintile 1	-13%	-21%	-24%	-18%	-1%	-5%	-1%	3%	0%	-2%
	Quintile 2	-1%	-10%	-9%	-1%	-0%	2%	17%	18%	0%	8%
	Quintile 3	-4%	-7%	-15%	-6%	3%	-1%	2%	9%	0%	3%
	Quintile 4	6%	10%	2%	11%	5%	8%	12%	5%	0%	-1%
	Quintile 5	20%	19%	14%	22%	11%	8%	10%	7%	0%	-3%

Note: The percentage change is not recorded in the above table for groups with fewer than 10 placed applicants in that cycle or in the 2018 cycle.

**P.10 Placed 18 year old applicants from Northern Ireland by POLAR4 quintile: 4 days after A level results day**

Placed 18 year old applicants: entry rate

- Quintile 1
- Quintile 2
- Quintile 3
- Quintile 4
- Quintile 5



**P.11 Placed 18 year old applicants from Northern Ireland by POLAR4 quintile: 4 days after A level results day**

Placed 18 year old applicants: entry rate

Applicant Status	POLAR4	2010	2011	2012	2013	2014	2015	2016	2017	2018	2019
Placed	Quintile 1	12.4%	11.4%	10.9%	12.0%	14.6%	13.5%	14.3%	14.9%	15.0%	15.1%
	Quintile 2	20.9%	19.6%	19.5%	21.7%	22.1%	22.0%	25.7%	26.1%	23.1%	25.7%
	Quintile 3	27.0%	26.4%	23.8%	26.7%	29.3%	27.3%	28.5%	30.7%	29.3%	31.1%
	Quintile 4	33.3%	35.2%	32.5%	36.2%	34.6%	34.9%	36.6%	34.9%	34.8%	35.8%
	Quintile 5	45.6%	46.6%	44.5%	49.4%	45.6%	43.9%	45.4%	45.0%	43.9%	44.3%

**P.12 Placed 18 year old applicants from Northern Ireland by POLAR4 quintile: 4 days after A level results day**

Placed 18 year old applicants: entry rate (indexed to 100 = Quintile 1)

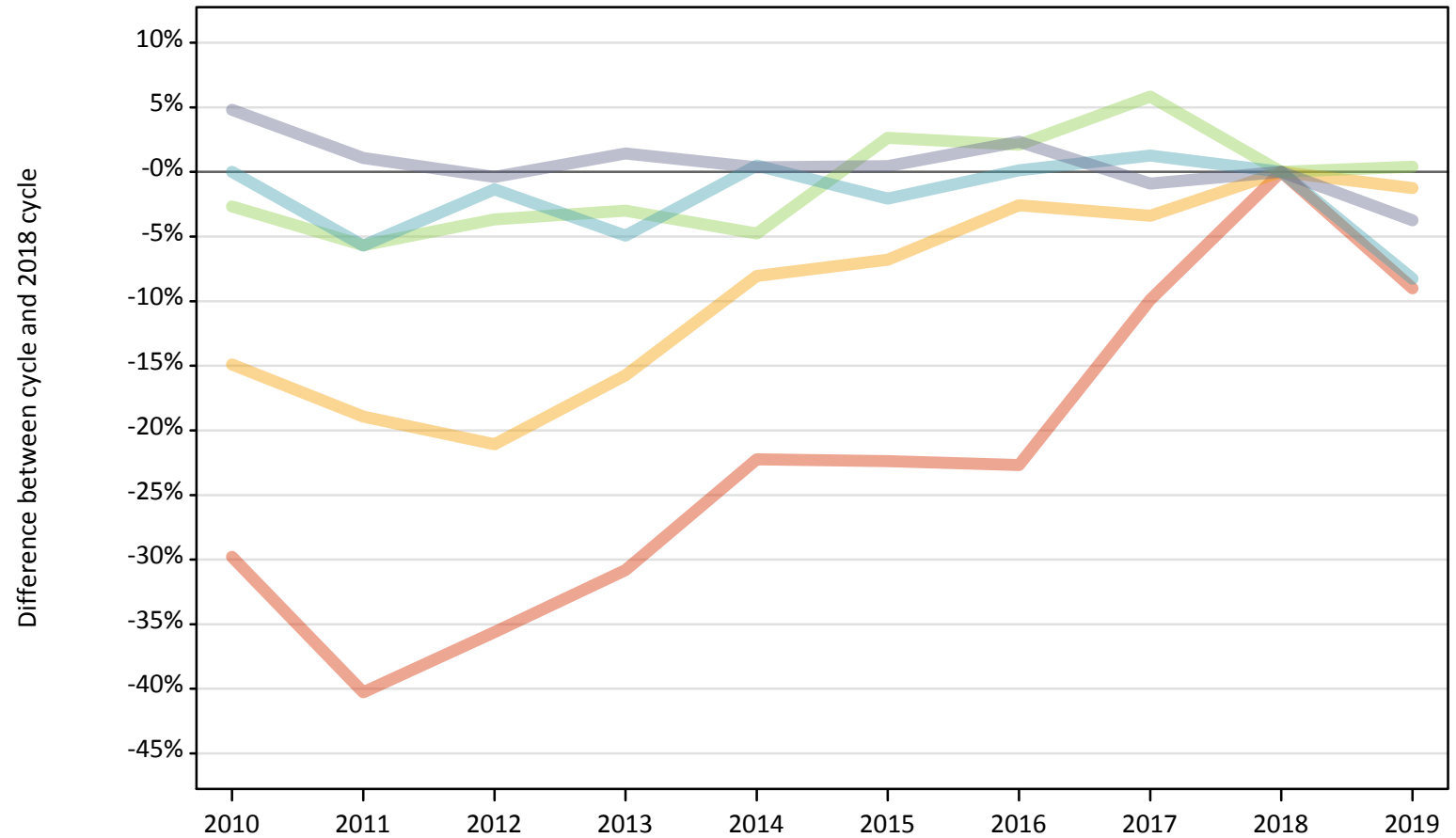
Applicant Status	POLAR4	2010	2011	2012	2013	2014	2015	2016	2017	2018	2019
Placed	Quintile 1	100	100	100	100	100	100	100	100	100	100
	Quintile 2	169	172	178	180	151	162	179	175	154	170
	Quintile 3	218	231	218	222	200	202	199	207	196	206
	Quintile 4	269	309	297	300	237	258	255	235	233	237
	Quintile 5	368	408	407	410	312	325	317	302	294	294



### P.13 Placed 18 year old applicants from Scotland by POLAR4 quintile: 4 days after A level results day

Placed 18 year old applicants: change relative to 2018 cycle totals

- Quintile 1
- Quintile 2
- Quintile 3
- Quintile 4
- Quintile 5



Note: The percentage change is not plotted in the above chart for groups with fewer than 30 placed applicants in any one cycle.

**P.14 Placed 18 year old applicants from Scotland by POLAR4 quintile: 4 days after A level results day**

Applicant Status	POLAR4	2010	2011	2012	2013	2014	2015	2016	2017	2018	2019
Placed	Quintile 1	480	410	440	480	540	530	530	620	690	630
	Quintile 2	1,230	1,170	1,140	1,220	1,330	1,340	1,410	1,390	1,440	1,420
	Quintile 3	2,180	2,110	2,160	2,170	2,130	2,300	2,290	2,370	2,240	2,250
	Quintile 4	3,340	3,150	3,300	3,180	3,360	3,270	3,340	3,380	3,340	3,060
	Quintile 5	7,120	6,870	6,770	6,900	6,820	6,830	6,960	6,740	6,800	6,540

**P.15 Placed 18 year old applicants from Scotland by POLAR4 quintile: 4 days after A level results day**

Placed 18 year old applicants: change relative to 2018 cycle totals

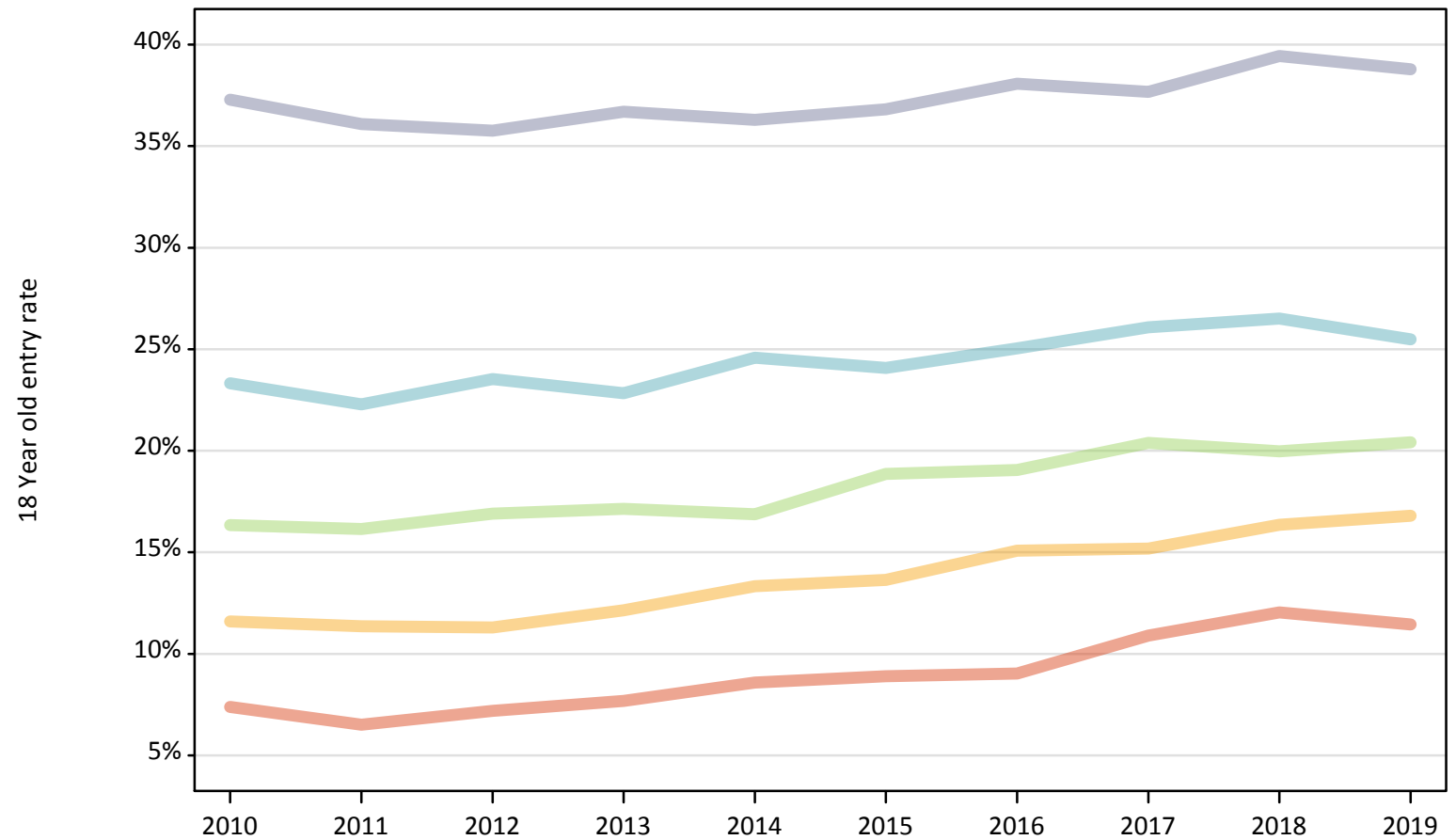
Applicant Status	POLAR4	2010	2011	2012	2013	2014	2015	2016	2017	2018	2019
Placed	Quintile 1	-30%	-40%	-36%	-31%	-22%	-22%	-23%	-10%	0%	-9%
	Quintile 2	-15%	-19%	-21%	-16%	-8%	-7%	-3%	-3%	0%	-1%
	Quintile 3	-3%	-6%	-4%	-3%	-5%	3%	2%	6%	0%	0%
	Quintile 4	0%	-6%	-1%	-5%	1%	-2%	0%	1%	0%	-8%
	Quintile 5	5%	1%	-0%	1%	0%	0%	2%	-1%	0%	-4%

Note: The percentage change is not recorded in the above table for groups with fewer than 10 placed applicants in that cycle or in the 2018 cycle.

**P.16 Placed 18 year old applicants from Scotland by POLAR4 quintile: 4 days after A level results day**

Placed 18 year old applicants: entry rate

- Quintile 1
- Quintile 2
- Quintile 3
- Quintile 4
- Quintile 5



**P.17 Placed 18 year old applicants from Scotland by POLAR4 quintile: 4 days after A level results day**

Placed 18 year old applicants: entry rate

Applicant Status	POLAR4	2010	2011	2012	2013	2014	2015	2016	2017	2018	2019
Placed	Quintile 1	7.4%	6.5%	7.2%	7.7%	8.6%	8.9%	9.0%	10.9%	12.0%	11.5%
	Quintile 2	11.6%	11.4%	11.3%	12.1%	13.3%	13.6%	15.1%	15.2%	16.4%	16.8%
	Quintile 3	16.3%	16.2%	16.9%	17.1%	16.9%	18.9%	19.0%	20.4%	20.0%	20.4%
	Quintile 4	23.3%	22.3%	23.5%	22.8%	24.6%	24.1%	25.0%	26.1%	26.5%	25.5%
	Quintile 5	37.3%	36.1%	35.8%	36.7%	36.3%	36.8%	38.1%	37.7%	39.4%	38.8%

**P.18 Placed 18 year old applicants from Scotland by POLAR4 quintile: 4 days after A level results day**

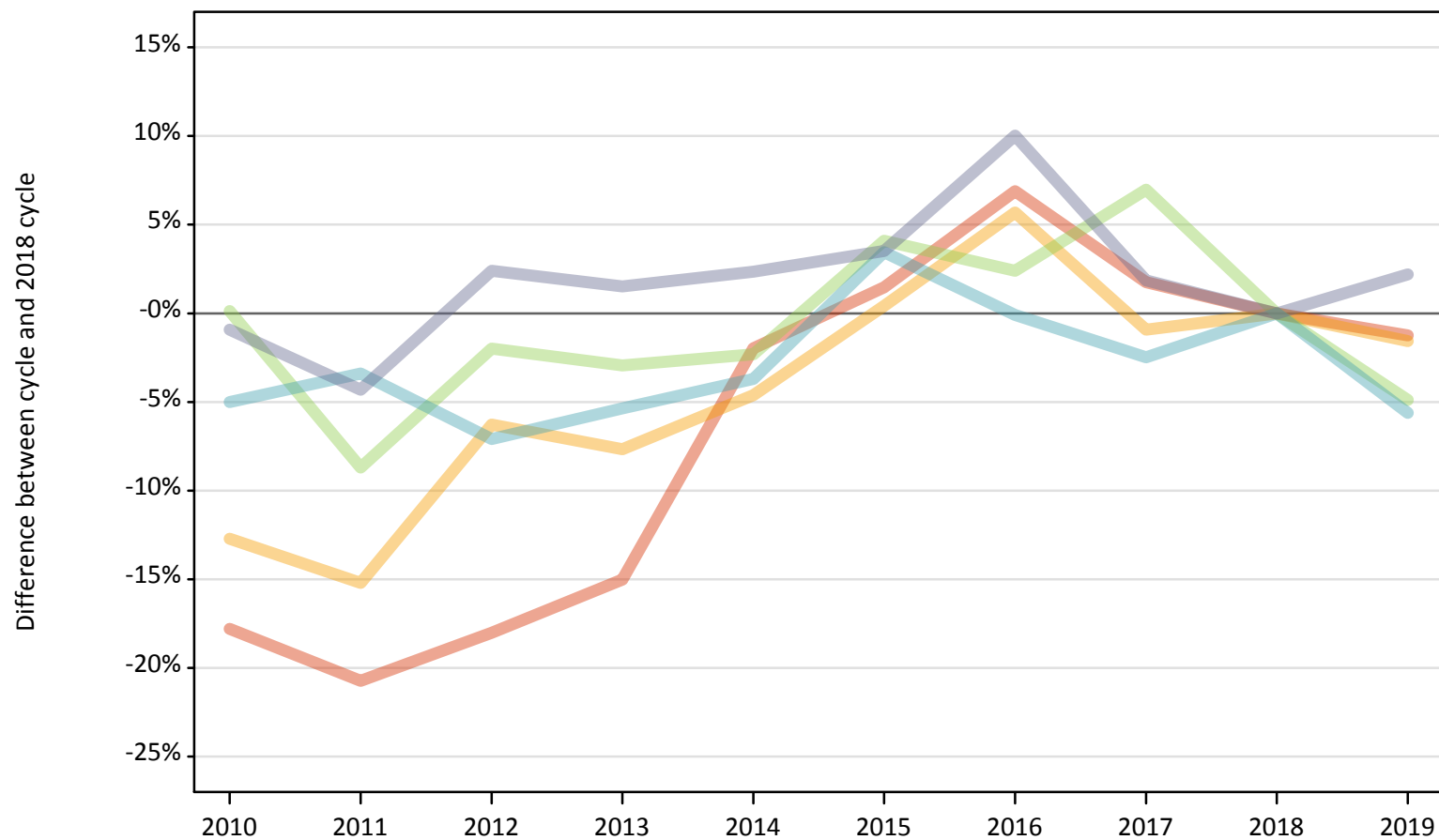
Placed 18 year old applicants: entry rate (indexed to 100 = Quintile 1)

Applicant Status	POLAR4	2010	2011	2012	2013	2014	2015	2016	2017	2018	2019
Placed	Quintile 1	100	100	100	100	100	100	100	100	100	100
	Quintile 2	157	174	157	158	155	153	167	139	136	147
	Quintile 3	221	248	235	223	196	212	211	187	166	178
	Quintile 4	316	342	327	297	286	271	277	239	220	223
	Quintile 5	505	554	497	478	423	414	422	346	327	339

### P.19 Placed 18 year old applicants from Wales by POLAR4 quintile: 4 days after A level results day

Placed 18 year old applicants: change relative to 2018 cycle totals

- Quintile 1
- Quintile 2
- Quintile 3
- Quintile 4
- Quintile 5



Note: The percentage change is not plotted in the above chart for groups with fewer than 30 placed applicants in any one cycle.

**P.20 Placed 18 year old applicants from Wales by POLAR4 quintile: 4 days after A level results day**

Applicant Status	POLAR4	2010	2011	2012	2013	2014	2015	2016	2017	2018	2019
Placed	Quintile 1	1,120	1,080	1,120	1,160	1,340	1,390	1,460	1,390	1,370	1,350
	Quintile 2	1,890	1,840	2,030	2,000	2,060	2,170	2,290	2,140	2,160	2,130
	Quintile 3	2,250	2,060	2,210	2,190	2,200	2,340	2,310	2,410	2,250	2,140
	Quintile 4	1,880	1,910	1,830	1,870	1,900	2,040	1,970	1,930	1,970	1,860
	Quintile 5	2,030	1,960	2,090	2,080	2,090	2,120	2,250	2,080	2,040	2,090

**P.21 Placed 18 year old applicants from Wales by POLAR4 quintile: 4 days after A level results day**

Placed 18 year old applicants: change relative to 2018 cycle totals

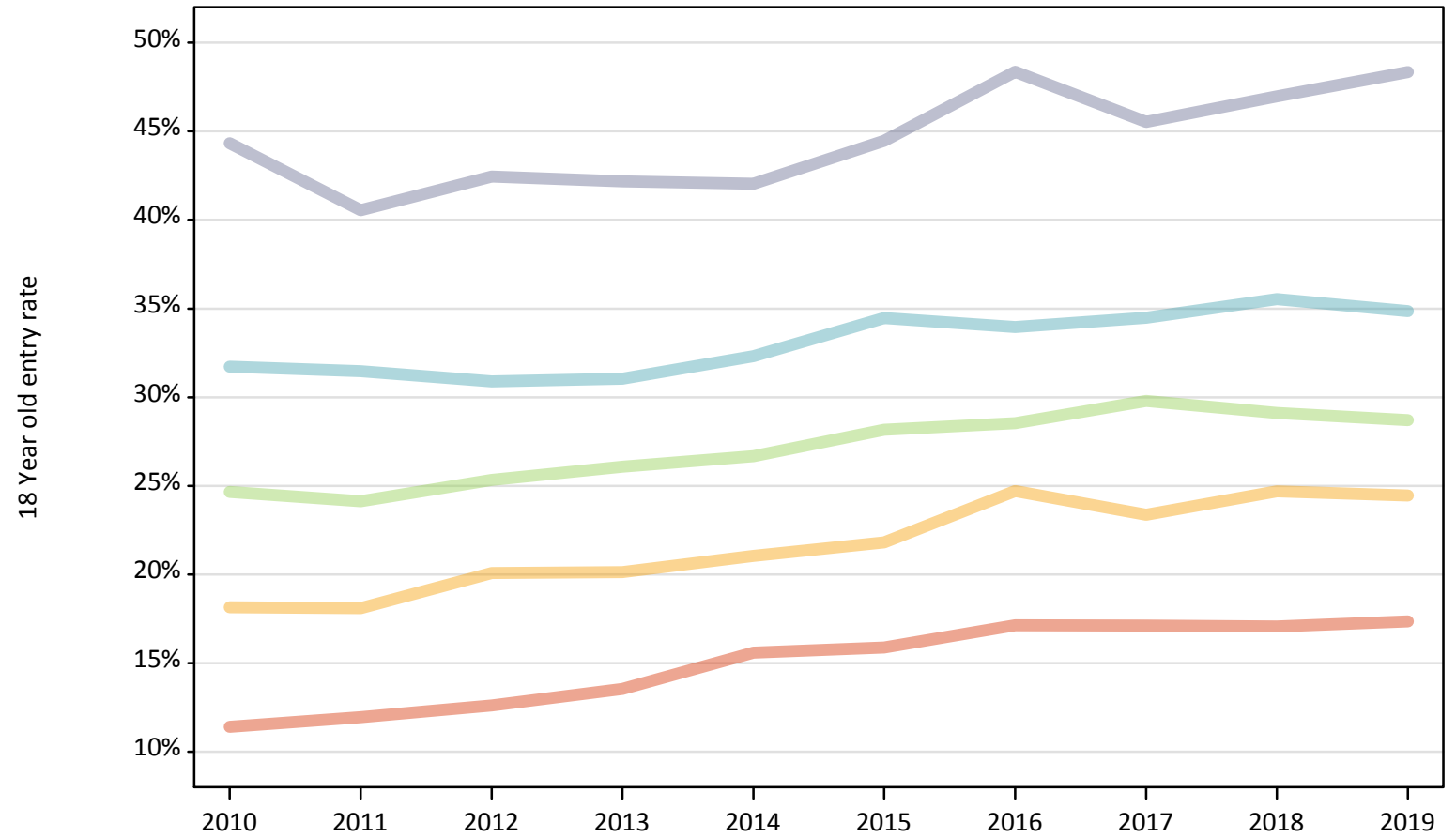
Applicant Status	POLAR4	2010	2011	2012	2013	2014	2015	2016	2017	2018	2019
Placed	Quintile 1	-18%	-21%	-18%	-15%	-2%	1%	7%	2%	0%	-1%
	Quintile 2	-13%	-15%	-6%	-8%	-5%	0%	6%	-1%	0%	-2%
	Quintile 3	0%	-9%	-2%	-3%	-2%	4%	2%	7%	0%	-5%
	Quintile 4	-5%	-3%	-7%	-5%	-4%	3%	-0%	-2%	0%	-6%
	Quintile 5	-1%	-4%	2%	2%	2%	4%	10%	2%	0%	2%

Note: The percentage change is not recorded in the above table for groups with fewer than 10 placed applicants in that cycle or in the 2018 cycle.

**P.22 Placed 18 year old applicants from Wales by POLAR4 quintile: 4 days after A level results day**

Placed 18 year old applicants: entry rate

- Quintile 1
- Quintile 2
- Quintile 3
- Quintile 4
- Quintile 5



**P.23 Placed 18 year old applicants from Wales by POLAR4 quintile: 4 days after A level results day**

Placed 18 year old applicants: entry rate

Applicant Status	POLAR4	2010	2011	2012	2013	2014	2015	2016	2017	2018	2019
Placed	Quintile 1	11.4%	11.9%	12.6%	13.5%	15.6%	15.9%	17.1%	17.1%	17.1%	17.3%
	Quintile 2	18.2%	18.1%	20.1%	20.1%	21.0%	21.8%	24.7%	23.4%	24.7%	24.5%
	Quintile 3	24.7%	24.1%	25.3%	26.1%	26.7%	28.2%	28.5%	29.8%	29.1%	28.7%
	Quintile 4	31.7%	31.5%	30.9%	31.1%	32.3%	34.5%	34.0%	34.5%	35.5%	34.9%
	Quintile 5	44.3%	40.6%	42.5%	42.2%	42.0%	44.5%	48.4%	45.5%	47.0%	48.3%

**P.24 Placed 18 year old applicants from Wales by POLAR4 quintile: 4 days after A level results day**

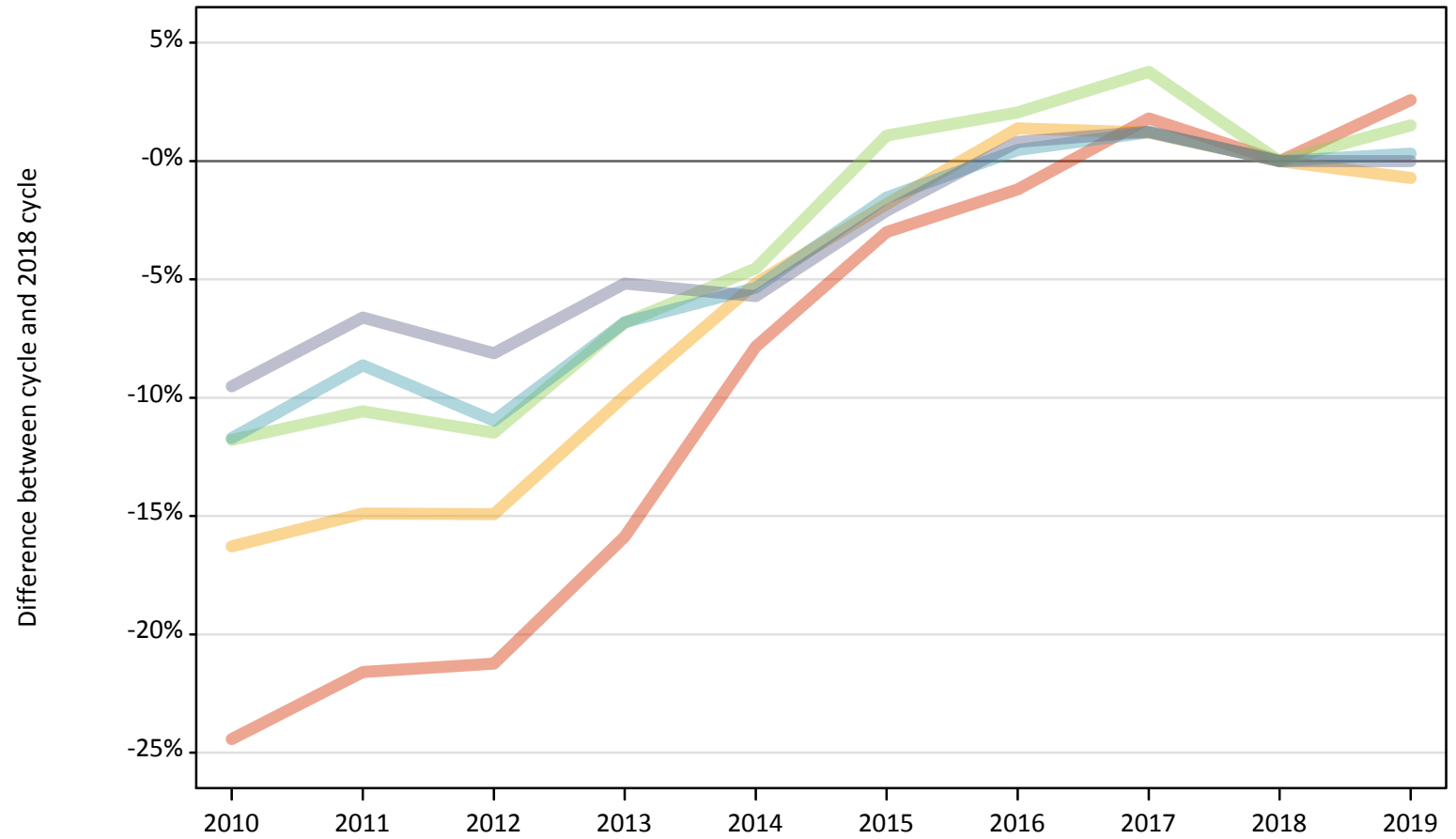
Placed 18 year old applicants: entry rate (indexed to 100 = Quintile 1)

Applicant Status	POLAR4	2010	2011	2012	2013	2014	2015	2016	2017	2018	2019
Placed	Quintile 1	100	100	100	100	100	100	100	100	100	100
	Quintile 2	159	151	159	149	135	137	144	136	145	141
	Quintile 3	216	202	201	193	171	177	167	174	171	166
	Quintile 4	278	263	245	229	207	217	198	201	208	201
	Quintile 5	388	339	337	312	270	280	282	266	275	279



**P.25 Placed 18 year old applicants from the UK by POLAR4 quintile: 4 days after A level results day**  
Placed 18 year old applicants: change relative to 2018 cycle totals

- Quintile 1
- Quintile 2
- Quintile 3
- Quintile 4
- Quintile 5



Note: The percentage change is not plotted in the above chart for groups with fewer than 30 placed applicants in any one cycle.

**P.26 Placed 18 year old applicants from the UK by POLAR4 quintile: 4 days after A level results day**

Applicant Status	POLAR4	2010	2011	2012	2013	2014	2015	2016	2017	2018	2019
Placed	Quintile 1	17,860	18,530	18,610	19,880	21,780	22,920	23,350	24,060	23,630	24,240
	Quintile 2	28,040	28,510	28,500	30,170	31,770	32,890	33,960	33,900	33,500	33,260
	Quintile 3	36,420	36,920	36,540	38,460	39,410	41,730	42,130	42,830	41,280	41,900
	Quintile 4	45,440	47,030	45,830	47,970	48,710	50,680	51,720	52,100	51,470	51,630
	Quintile 5	68,130	70,320	69,180	71,400	71,000	73,720	75,910	76,230	75,300	75,300

**P.27 Placed 18 year old applicants from the UK by POLAR4 quintile: 4 days after A level results day**

Placed 18 year old applicants: change relative to 2018 cycle totals

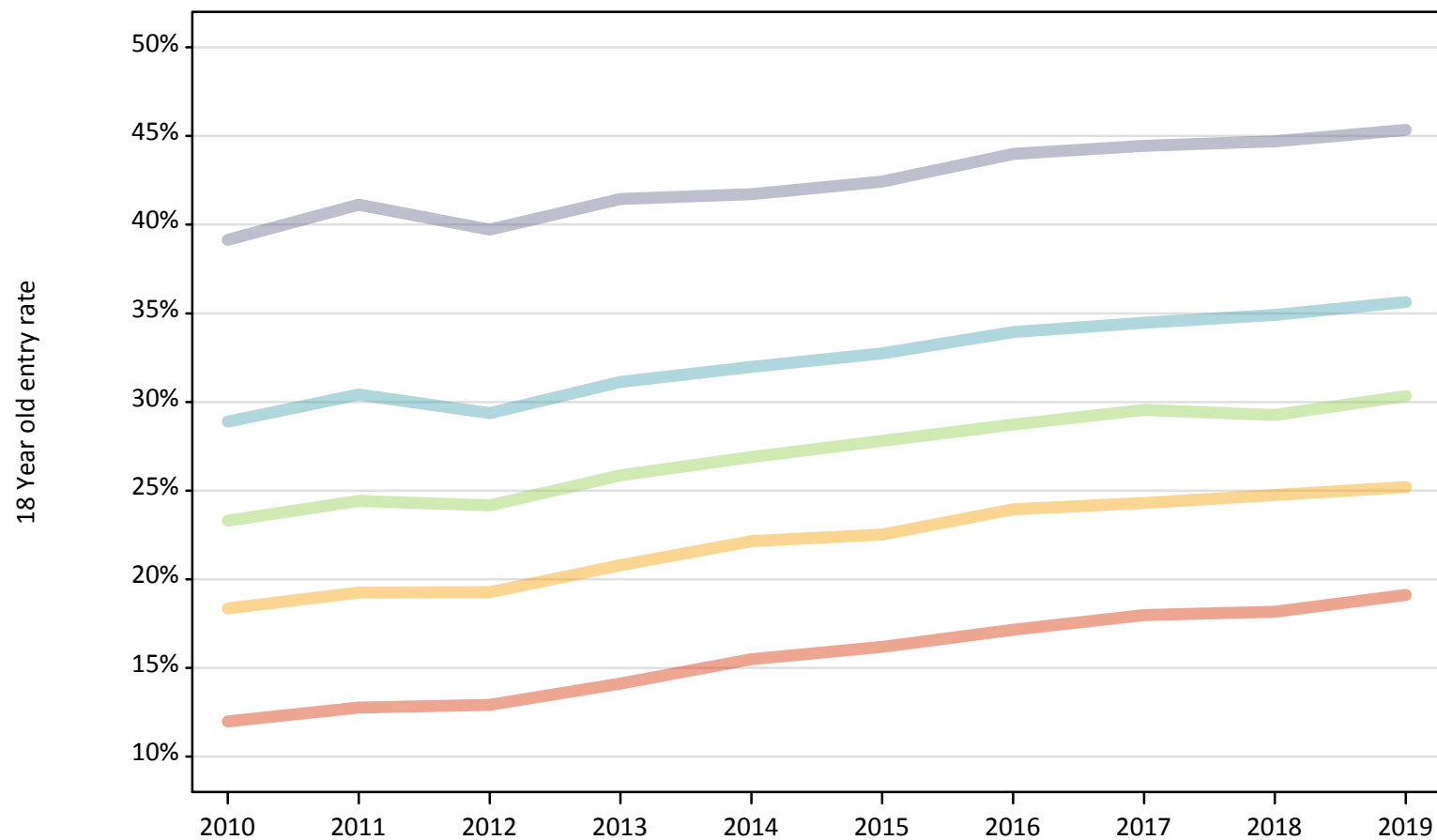
Applicant Status	POLAR4	2010	2011	2012	2013	2014	2015	2016	2017	2018	2019
Placed	Quintile 1	-24%	-22%	-21%	-16%	-8%	-3%	-1%	2%	0%	3%
	Quintile 2	-16%	-15%	-15%	-10%	-5%	-2%	1%	1%	0%	-1%
	Quintile 3	-12%	-11%	-11%	-7%	-5%	1%	2%	4%	0%	2%
	Quintile 4	-12%	-9%	-11%	-7%	-5%	-2%	0%	1%	0%	0%
	Quintile 5	-10%	-7%	-8%	-5%	-6%	-2%	1%	1%	0%	0%

Note: The percentage change is not recorded in the above table for groups with fewer than 10 placed applicants in that cycle or in the 2018 cycle.

## P.28 Placed 18 year old applicants from the UK by POLAR4 quintile: 4 days after A level results day

Placed 18 year old applicants: entry rate

- Quintile 1
- Quintile 2
- Quintile 3
- Quintile 4
- Quintile 5



**P.29 Placed 18 year old applicants from the UK by POLAR4 quintile: 4 days after A level results day**

Placed 18 year old applicants: entry rate

Applicant Status	POLAR4	2010	2011	2012	2013	2014	2015	2016	2017	2018	2019
Placed	Quintile 1	12.0%	12.8%	12.9%	14.1%	15.5%	16.2%	17.2%	18.0%	18.2%	19.1%
	Quintile 2	18.3%	19.3%	19.3%	20.8%	22.1%	22.5%	23.9%	24.3%	24.8%	25.2%
	Quintile 3	23.3%	24.4%	24.2%	25.9%	26.9%	27.8%	28.7%	29.6%	29.3%	30.3%
	Quintile 4	28.9%	30.4%	29.4%	31.1%	32.0%	32.7%	33.9%	34.5%	34.9%	35.6%
	Quintile 5	39.1%	41.1%	39.7%	41.4%	41.7%	42.4%	44.0%	44.4%	44.7%	45.3%

**P.30 Placed 18 year old applicants from the UK by POLAR4 quintile: 4 days after A level results day**

Placed 18 year old applicants: entry rate (indexed to 100 = Quintile 1)

Applicant Status	POLAR4	2010	2011	2012	2013	2014	2015	2016	2017	2018	2019
Placed	Quintile 1	100	100	100	100	100	100	100	100	100	100
	Quintile 2	153	151	149	147	143	139	140	135	136	132
	Quintile 3	194	191	187	183	174	172	167	164	161	159
	Quintile 4	241	238	227	220	206	202	198	192	192	186
	Quintile 5	326	322	308	293	269	262	256	247	246	237