

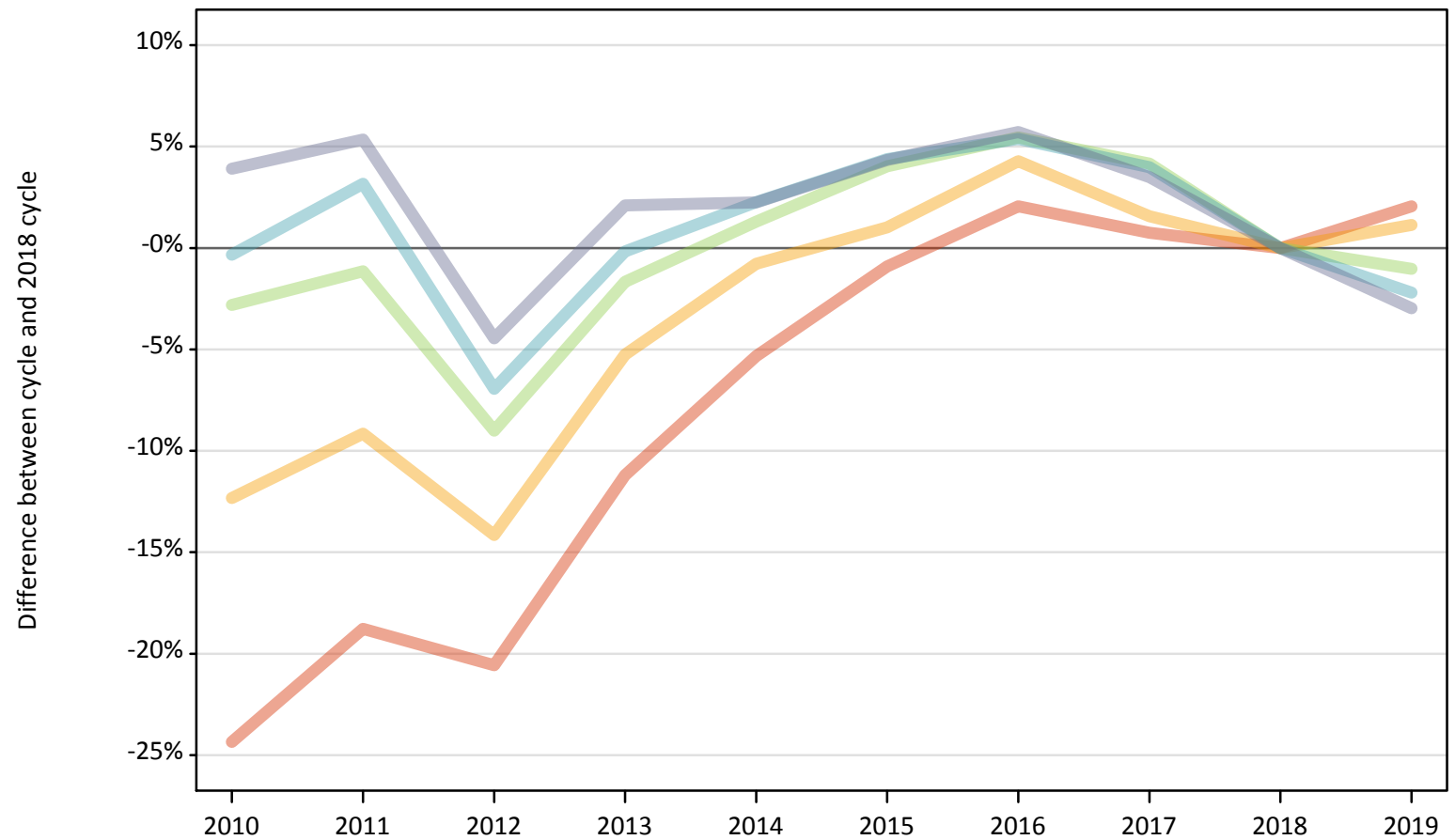
Daily Clearing Analysis: IMD2015

Analysis at 00:05 on Monday 19 August 2019 (4 days after A level results day)

J.1 Placed applicants from England by IMD2015 quintile: 4 days after A level results day

Placed applicants: change relative to 2018 cycle totals

- Quintile 1
- Quintile 2
- Quintile 3
- Quintile 4
- Quintile 5



Note: The percentage change is not plotted in the above chart for groups with fewer than 30 placed applicants in any one cycle.

J.2 Placed applicants from England by IMD2015 quintile: 4 days after A level results day

Applicant Status IMD2015		2010	2011	2012	2013	2014	2015	2016	2017	2018	2019
Placed	Quintile 1	45,100	48,430	47,360	52,950	56,450	59,080	60,850	60,070	59,620	60,850
	Quintile 2	51,620	53,490	50,550	55,780	58,420	59,480	61,390	59,800	58,880	59,550
	Quintile 3	59,520	60,540	55,720	60,220	62,030	63,700	64,580	63,790	61,240	60,610
	Quintile 4	67,420	69,790	62,960	67,540	69,180	70,620	71,290	70,350	67,650	66,160
	Quintile 5	83,300	84,450	76,590	81,850	81,970	83,640	84,750	82,960	80,160	77,790

J.3 Placed applicants from England by IMD2015 quintile: 4 days after A level results day

Placed applicants: change relative to 2018 cycle totals

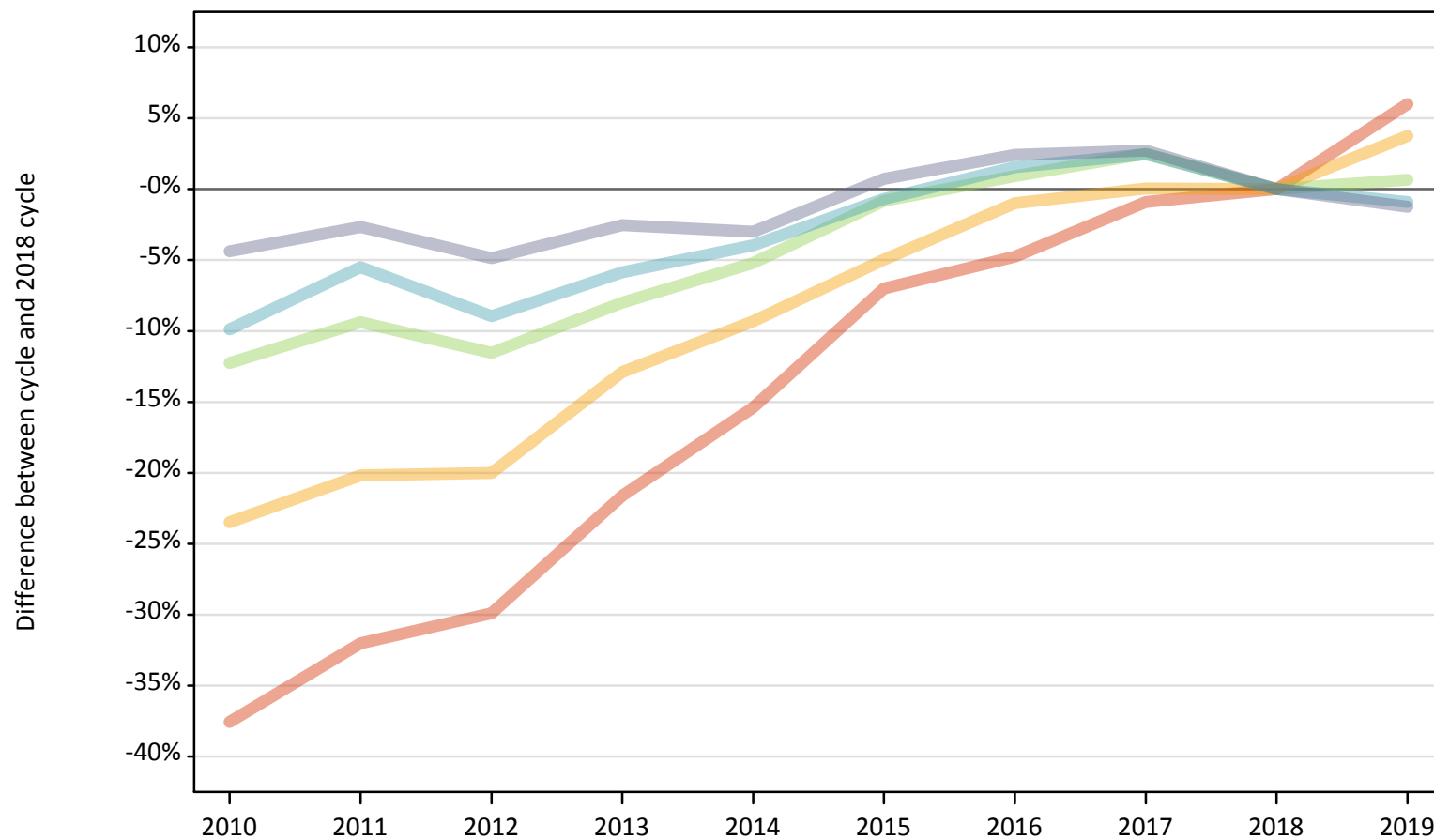
Applicant Status IMD2015		2010	2011	2012	2013	2014	2015	2016	2017	2018	2019
Placed	Quintile 1	-24%	-19%	-21%	-11%	-5%	-1%	2%	1%	0%	2%
	Quintile 2	-12%	-9%	-14%	-5%	-1%	1%	4%	2%	0%	1%
	Quintile 3	-3%	-1%	-9%	-2%	1%	4%	5%	4%	0%	-1%
	Quintile 4	-0%	3%	-7%	-0%	2%	4%	5%	4%	0%	-2%
	Quintile 5	4%	5%	-4%	2%	2%	4%	6%	3%	0%	-3%

Note: The percentage change is not recorded in the above table for groups with fewer than 10 placed applicants in that cycle or in the 2018 cycle.

J.4 Placed 18 year old applicants from England by IMD2015 quintile: 4 days after A level results day

Placed 18 year old applicants: change relative to 2018 cycle totals

- Quintile 1
- Quintile 2
- Quintile 3
- Quintile 4
- Quintile 5



Note: The percentage change is not plotted in the above chart for groups with fewer than 30 placed applicants in any one cycle.

J.5 Placed 18 year old applicants from England by IMD2015 quintile: 4 days after A level results day

Applicant Status IMD2015		2010	2011	2012	2013	2014	2015	2016	2017	2018	2019
Placed	Quintile 1	18,090	19,700	20,310	22,710	24,510	26,940	27,600	28,710	28,970	30,710
	Quintile 2	23,950	24,980	25,030	27,260	28,380	29,740	30,990	31,310	31,290	32,470
	Quintile 3	31,510	32,550	31,780	33,050	34,050	35,620	36,250	36,820	35,920	36,150
	Quintile 4	38,620	40,500	39,030	40,350	41,170	42,570	43,530	43,920	42,860	42,470
	Quintile 5	52,450	53,390	52,180	53,460	53,200	55,250	56,180	56,330	54,840	54,160

J.6 Placed 18 year old applicants from England by IMD2015 quintile: 4 days after A level results day

Placed 18 year old applicants: change relative to 2018 cycle totals

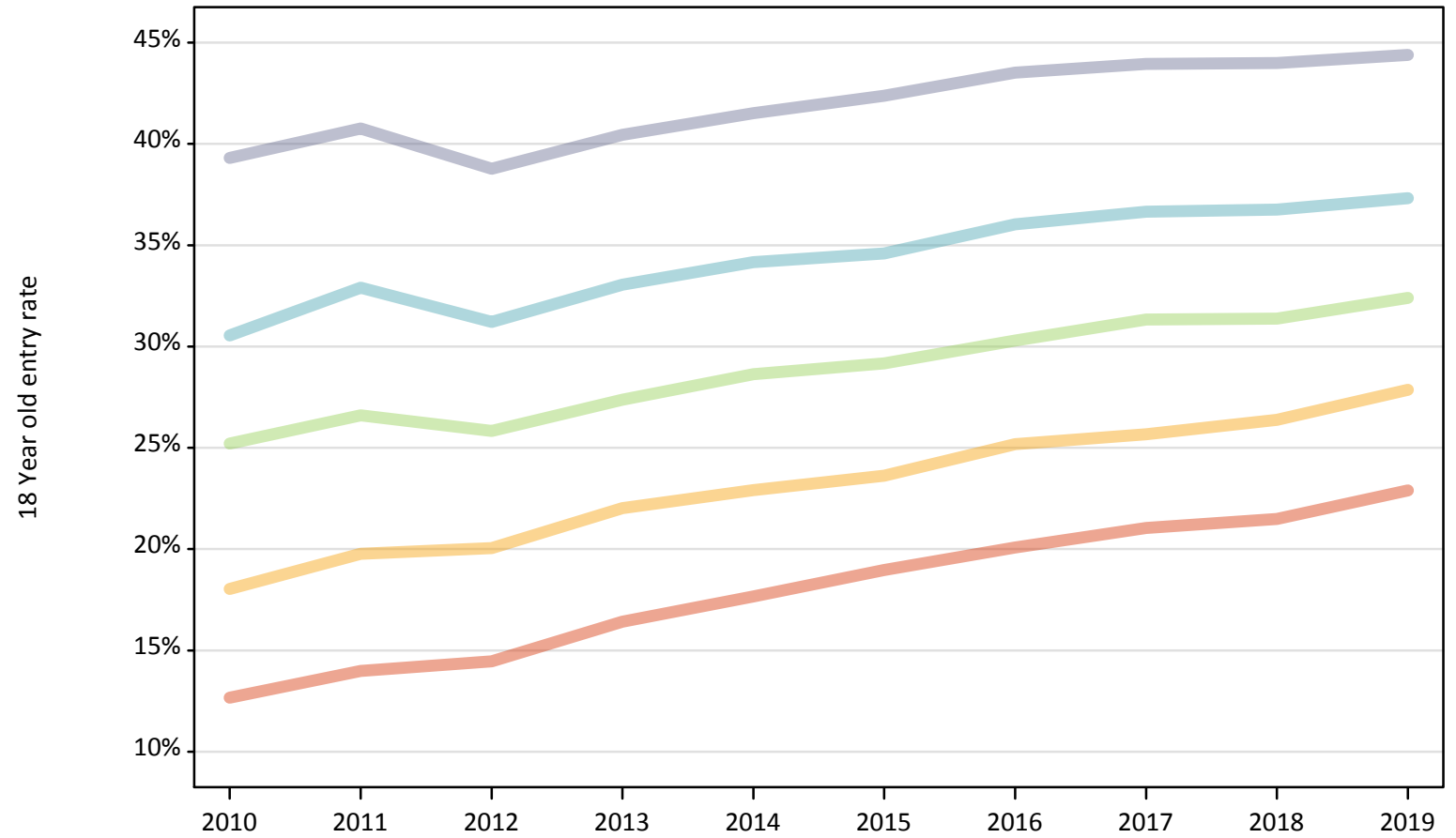
Applicant Status IMD2015		2010	2011	2012	2013	2014	2015	2016	2017	2018	2019
Placed	Quintile 1	-38%	-32%	-30%	-22%	-15%	-7%	-5%	-1%	0%	6%
	Quintile 2	-23%	-20%	-20%	-13%	-9%	-5%	-1%	0%	0%	4%
	Quintile 3	-12%	-9%	-12%	-8%	-5%	-1%	1%	3%	0%	1%
	Quintile 4	-10%	-6%	-9%	-6%	-4%	-1%	2%	2%	0%	-1%
	Quintile 5	-4%	-3%	-5%	-3%	-3%	1%	2%	3%	0%	-1%

Note: The percentage change is not recorded in the above table for groups with fewer than 10 placed applicants in that cycle or in the 2018 cycle.

J.7 Placed 18 year old applicants from England by IMD2015 quintile: 4 days after A level results day

Placed 18 year old applicants: entry rate

- Quintile 1
- Quintile 2
- Quintile 3
- Quintile 4
- Quintile 5



J.8 Placed 18 year old applicants from England by IMD2015 quintile: 4 days after A level results day

Placed 18 year old applicants: entry rate

Applicant Status	IMD2015	2010	2011	2012	2013	2014	2015	2016	2017	2018	2019
Placed	Quintile 1	12.7%	14.0%	14.5%	16.4%	17.7%	19.0%	20.1%	21.0%	21.5%	22.9%
	Quintile 2	18.0%	19.8%	20.1%	22.0%	22.9%	23.6%	25.2%	25.7%	26.4%	27.9%
	Quintile 3	25.2%	26.6%	25.8%	27.4%	28.6%	29.2%	30.3%	31.3%	31.4%	32.4%
	Quintile 4	30.5%	32.9%	31.2%	33.1%	34.2%	34.6%	36.0%	36.7%	36.8%	37.3%
	Quintile 5	39.3%	40.8%	38.8%	40.4%	41.5%	42.4%	43.5%	44.0%	44.0%	44.4%

J.9 Placed 18 year old applicants from England by IMD2015 quintile: 4 days after A level results day

Placed 18 year old applicants: entry rate (indexed to 100 = Quintile 1)

Applicant Status	IMD2015	2010	2011	2012	2013	2014	2015	2016	2017	2018	2019
Placed	Quintile 1	100	100	100	100	100	100	100	100	100	100
	Quintile 2	142	141	139	134	130	124	125	122	123	122
	Quintile 3	199	190	179	167	162	154	151	149	146	142
	Quintile 4	241	235	216	201	193	182	179	174	171	163
	Quintile 5	310	292	268	246	235	223	217	209	205	194