

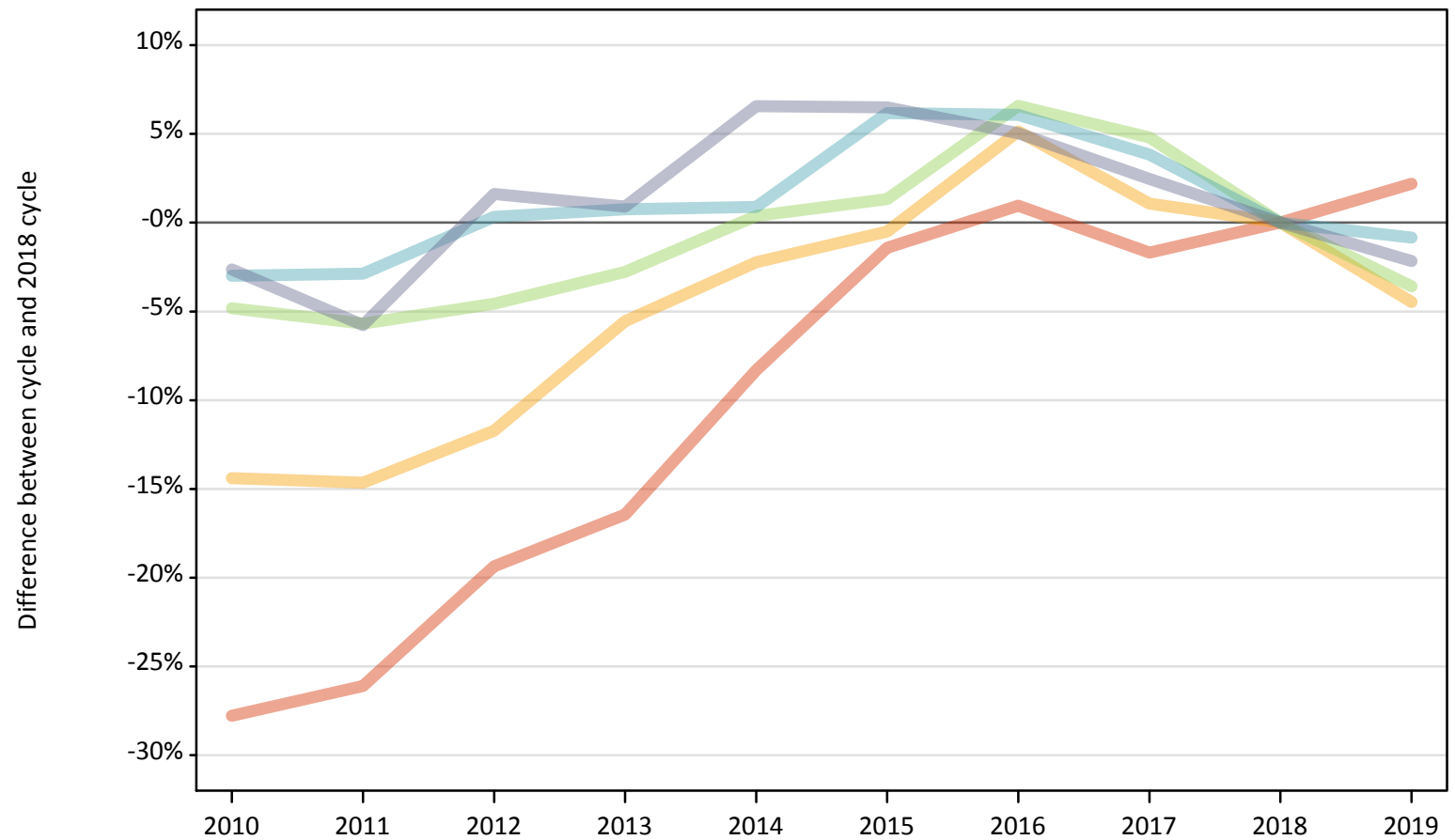
Daily Clearing Analysis: WIMD2014

Analysis at 00:05 on Monday 19 August 2019 (4 days after A level results day)

J.1 Placed applicants from Wales by WIMD2014 quintile: 4 days after A level results day

Placed applicants: change relative to 2018 cycle totals

- Quintile 1
- Quintile 2
- Quintile 3
- Quintile 4
- Quintile 5



Note: The percentage change is not plotted in the above chart for groups with fewer than 30 placed applicants in any one cycle.

J.2 Placed applicants from Wales by WIMD2014 quintile: 4 days after A level results day

| Applicant Status | WIMD2014 | 2010 | 2011 | 2012 | 2013 | 2014 | 2015 | 2016 | 2017 | 2018 | 2019 |
|------------------|------------|-------|-------|-------|-------|-------|-------|-------|-------|-------|-------|
| Placed | Quintile 1 | 1,880 | 1,930 | 2,100 | 2,180 | 2,390 | 2,570 | 2,630 | 2,570 | 2,610 | 2,670 |
| | Quintile 2 | 2,560 | 2,560 | 2,640 | 2,830 | 2,930 | 2,980 | 3,150 | 3,030 | 3,000 | 2,860 |
| | Quintile 3 | 3,300 | 3,270 | 3,300 | 3,370 | 3,480 | 3,510 | 3,690 | 3,630 | 3,460 | 3,340 |
| | Quintile 4 | 3,610 | 3,610 | 3,730 | 3,750 | 3,750 | 3,950 | 3,950 | 3,860 | 3,720 | 3,690 |
| | Quintile 5 | 4,560 | 4,410 | 4,760 | 4,720 | 4,990 | 4,980 | 4,920 | 4,800 | 4,680 | 4,580 |

J.3 Placed applicants from Wales by WIMD2014 quintile: 4 days after A level results day

Placed applicants: change relative to 2018 cycle totals

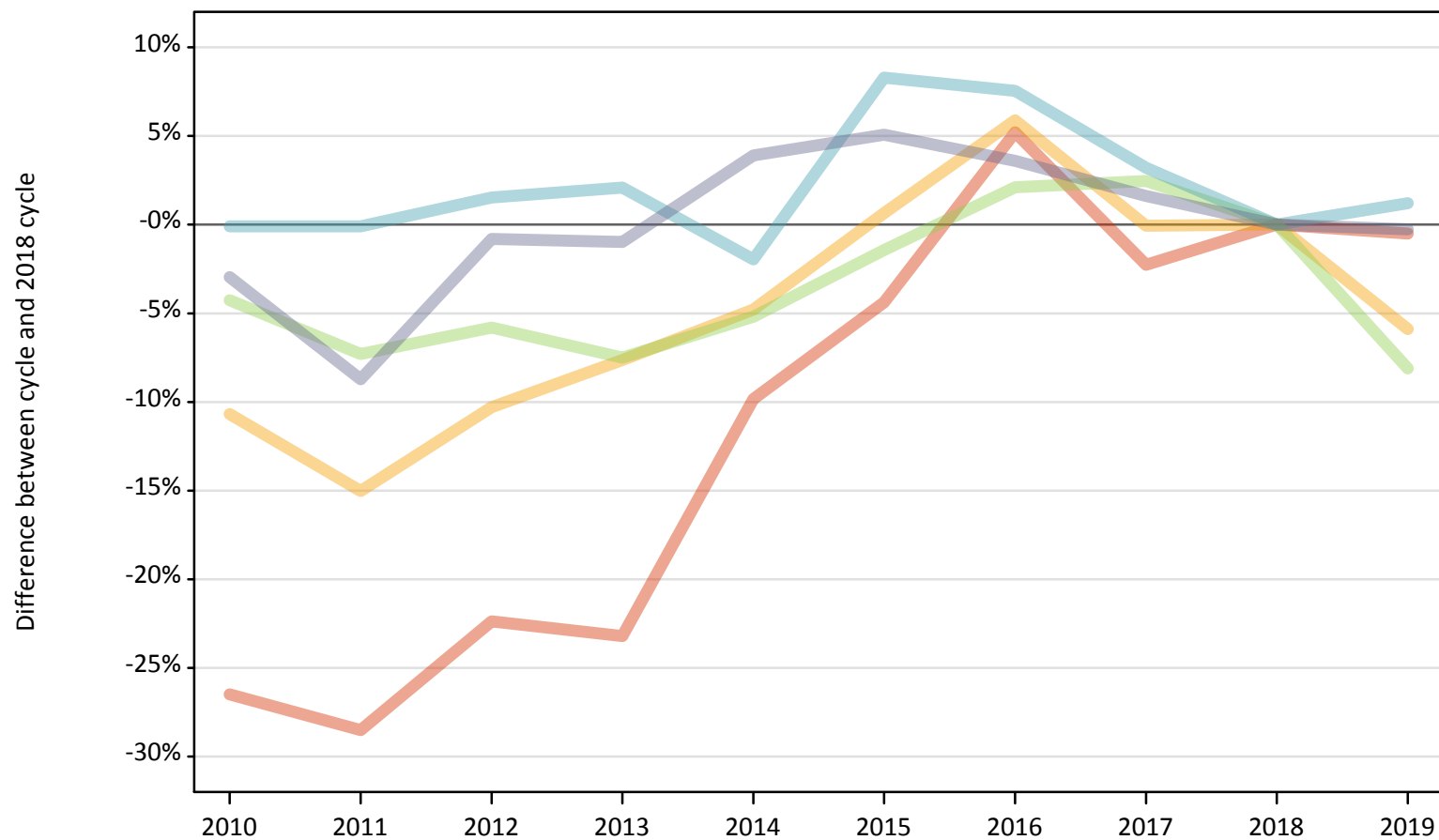
| Applicant Status | WIMD2014 | 2010 | 2011 | 2012 | 2013 | 2014 | 2015 | 2016 | 2017 | 2018 | 2019 |
|------------------|------------|------|------|------|------|------|------|------|------|------|------|
| Placed | Quintile 1 | -28% | -26% | -19% | -16% | -8% | -1% | 1% | -2% | 0% | 2% |
| | Quintile 2 | -14% | -15% | -12% | -6% | -2% | -1% | 5% | 1% | 0% | -4% |
| | Quintile 3 | -5% | -6% | -5% | -3% | 0% | 1% | 7% | 5% | 0% | -4% |
| | Quintile 4 | -3% | -3% | 0% | 1% | 1% | 6% | 6% | 4% | 0% | -1% |
| | Quintile 5 | -3% | -6% | 2% | 1% | 7% | 6% | 5% | 2% | 0% | -2% |

Note: The percentage change is not recorded in the above table for groups with fewer than 10 placed applicants in that cycle or in the 2018 cycle.

J.4 Placed 18 year old applicants from Wales by WIMD2014 quintile: 4 days after A level results day

Placed 18 year old applicants: change relative to 2018 cycle totals

- Quintile 1
- Quintile 2
- Quintile 3
- Quintile 4
- Quintile 5



Note: The percentage change is not plotted in the above chart for groups with fewer than 30 placed applicants in any one cycle.

J.5 Placed 18 year old applicants from Wales by WIMD2014 quintile: 4 days after A level results day

| Applicant Status | WIMD2014 | 2010 | 2011 | 2012 | 2013 | 2014 | 2015 | 2016 | 2017 | 2018 | 2019 |
|------------------|------------|-------|-------|-------|-------|-------|-------|-------|-------|-------|-------|
| Placed | Quintile 1 | 870 | 850 | 920 | 910 | 1,070 | 1,140 | 1,250 | 1,160 | 1,190 | 1,180 |
| | Quintile 2 | 1,380 | 1,310 | 1,390 | 1,430 | 1,470 | 1,560 | 1,640 | 1,540 | 1,550 | 1,450 |
| | Quintile 3 | 1,860 | 1,810 | 1,830 | 1,800 | 1,850 | 1,920 | 1,990 | 2,000 | 1,950 | 1,790 |
| | Quintile 4 | 2,150 | 2,150 | 2,180 | 2,190 | 2,110 | 2,330 | 2,310 | 2,220 | 2,150 | 2,170 |
| | Quintile 5 | 2,880 | 2,710 | 2,950 | 2,940 | 3,090 | 3,120 | 3,080 | 3,020 | 2,970 | 2,960 |

J.6 Placed 18 year old applicants from Wales by WIMD2014 quintile: 4 days after A level results day

Placed 18 year old applicants: change relative to 2018 cycle totals

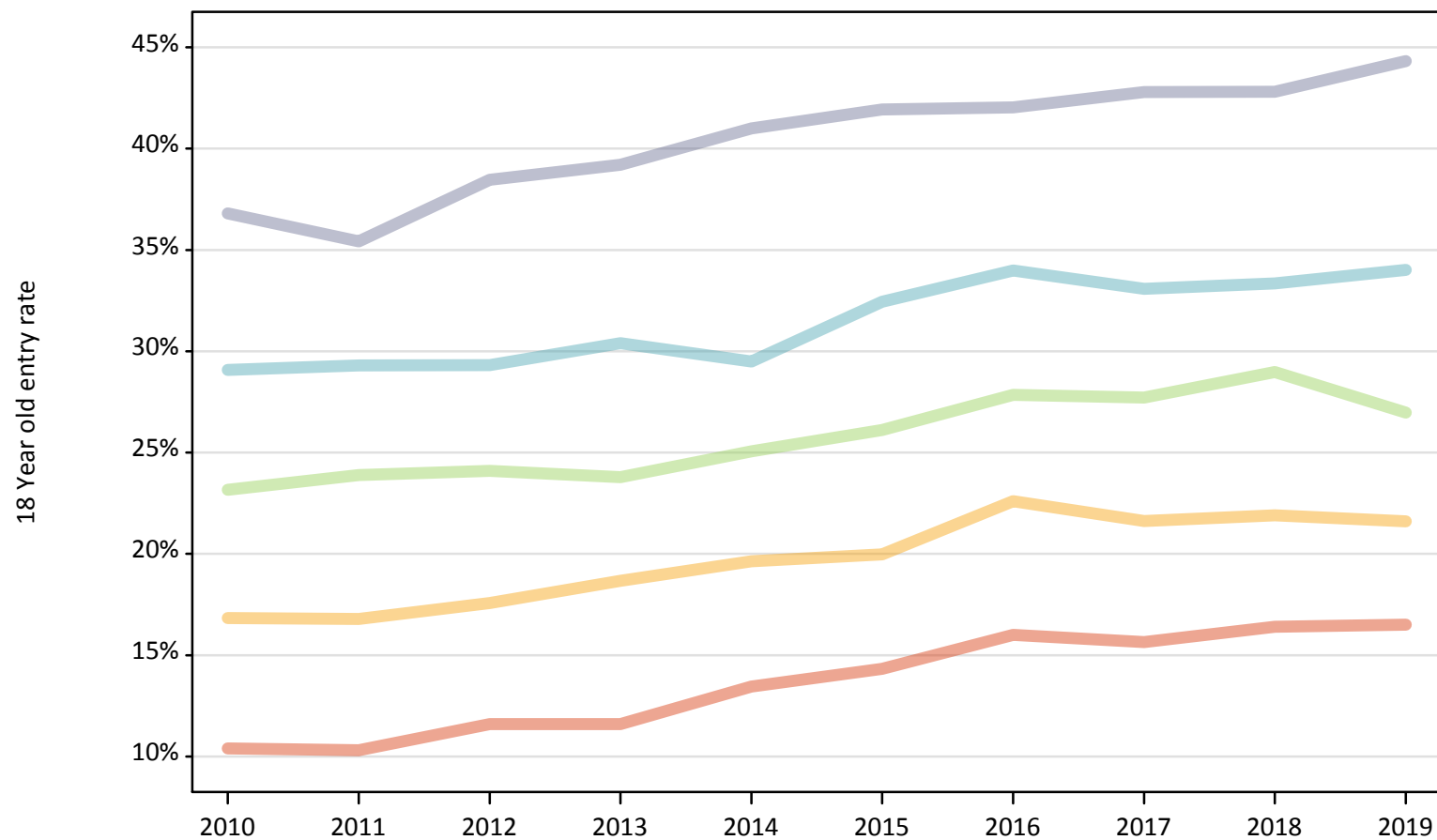
| Applicant Status | WIMD2014 | 2010 | 2011 | 2012 | 2013 | 2014 | 2015 | 2016 | 2017 | 2018 | 2019 |
|------------------|------------|------|------|------|------|------|------|------|------|------|------|
| Placed | Quintile 1 | -26% | -29% | -22% | -23% | -10% | -4% | 5% | -2% | 0% | -1% |
| | Quintile 2 | -11% | -15% | -10% | -8% | -5% | 1% | 6% | -0% | 0% | -6% |
| | Quintile 3 | -4% | -7% | -6% | -7% | -5% | -1% | 2% | 2% | 0% | -8% |
| | Quintile 4 | -0% | -0% | 2% | 2% | -2% | 8% | 8% | 3% | 0% | 1% |
| | Quintile 5 | -3% | -9% | -1% | -1% | 4% | 5% | 4% | 2% | 0% | -0% |

Note: The percentage change is not recorded in the above table for groups with fewer than 10 placed applicants in that cycle or in the 2018 cycle.

J.7 Placed 18 year old applicants from Wales by WIMD2014 quintile: 4 days after A level results day

Placed 18 year old applicants: entry rate

- Quintile 1
- Quintile 2
- Quintile 3
- Quintile 4
- Quintile 5



J.8 Placed 18 year old applicants from Wales by WIMD2014 quintile: 4 days after A level results day

Placed 18 year old applicants: entry rate

| Applicant Status | WIMD2014 | 2010 | 2011 | 2012 | 2013 | 2014 | 2015 | 2016 | 2017 | 2018 | 2019 |
|------------------|------------|-------|-------|-------|-------|-------|-------|-------|-------|-------|-------|
| Placed | Quintile 1 | 10.4% | 10.3% | 11.6% | 11.6% | 13.5% | 14.3% | 16.0% | 15.7% | 16.4% | 16.5% |
| | Quintile 2 | 16.8% | 16.8% | 17.6% | 18.7% | 19.6% | 20.0% | 22.6% | 21.6% | 21.9% | 21.6% |
| | Quintile 3 | 23.2% | 23.9% | 24.1% | 23.8% | 25.1% | 26.1% | 27.8% | 27.7% | 29.0% | 27.0% |
| | Quintile 4 | 29.1% | 29.3% | 29.3% | 30.4% | 29.5% | 32.4% | 34.0% | 33.1% | 33.4% | 34.0% |
| | Quintile 5 | 36.8% | 35.4% | 38.5% | 39.2% | 41.0% | 41.9% | 42.0% | 42.8% | 42.8% | 44.3% |

J.9 Placed 18 year old applicants from Wales by WIMD2014 quintile: 4 days after A level results day

Placed 18 year old applicants: entry rate (indexed to 100 = Quintile 1)

| Applicant Status | WIMD2014 | 2010 | 2011 | 2012 | 2013 | 2014 | 2015 | 2016 | 2017 | 2018 | 2019 |
|------------------|------------|------|------|------|------|------|------|------|------|------|------|
| Placed | Quintile 1 | 100 | 100 | 100 | 100 | 100 | 100 | 100 | 100 | 100 | 100 |
| | Quintile 2 | 162 | 163 | 151 | 161 | 146 | 139 | 141 | 138 | 134 | 131 |
| | Quintile 3 | 223 | 232 | 208 | 205 | 186 | 182 | 174 | 177 | 177 | 163 |
| | Quintile 4 | 280 | 284 | 253 | 262 | 219 | 226 | 212 | 211 | 203 | 206 |
| | Quintile 5 | 354 | 343 | 331 | 338 | 305 | 293 | 263 | 273 | 261 | 268 |