

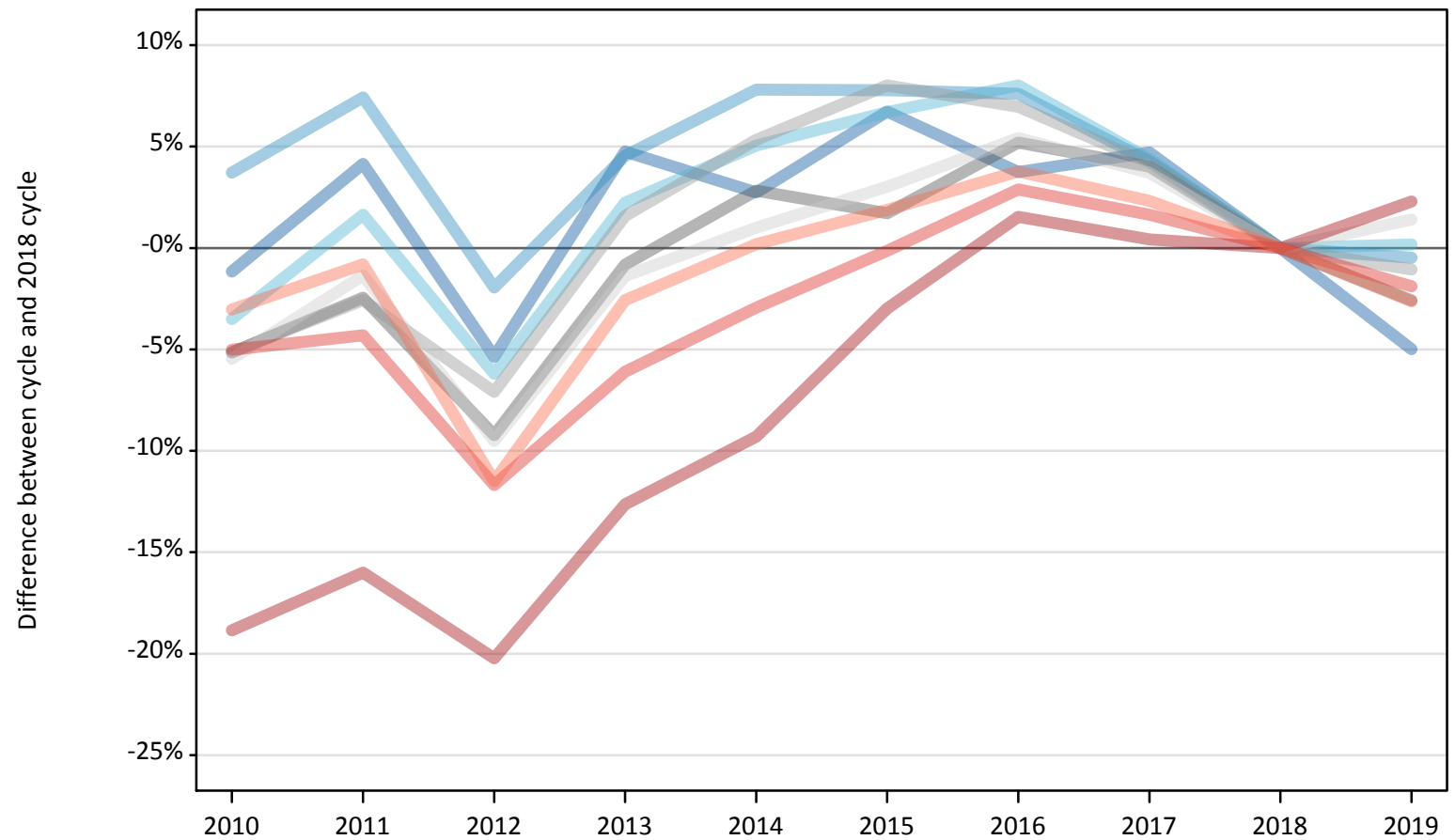
# Daily Clearing Analysis: Region

Analysis at 00:05 on Monday 19 August 2019 (4 days after A level results day)

## R.1 Placed applicants by region of domicile: 4 days after A level results day

Placed applicants: change relative to 2018 cycle totals

- North East
- North West
- Yorkshire and The Humber
- East Midlands
- West Midlands
- East of England
- London
- South East
- South West



Note: The percentage change is not plotted in the above chart for groups with fewer than 30 placed applicants in any one cycle.

## R.2 Placed applicants by region of domicile: 4 days after A level results day

Applicant Status	Domicile	2010	2011	2012	2013	2014	2015	2016	2017	2018	2019
Placed	North East	13,720	14,450	13,130	14,540	14,260	14,810	14,400	14,530	13,880	13,190
	North West	43,060	44,600	40,710	43,410	44,760	44,750	44,670	43,290	41,520	41,320
	Yorkshire and The Humber	28,190	29,700	27,400	29,870	30,690	31,170	31,560	30,500	29,220	29,270
	East Midlands	24,160	24,850	23,120	25,260	26,190	25,910	26,800	26,490	25,470	24,810
	West Midlands	31,870	32,730	31,210	34,120	35,380	36,280	35,930	35,000	33,590	33,240
	East of England	32,270	33,680	30,890	33,660	34,480	35,170	35,990	35,400	34,140	34,610
	London	52,150	53,970	51,270	56,140	58,290	62,340	65,250	64,530	64,260	65,730
	South East	52,590	52,990	48,900	51,990	53,740	55,290	56,970	56,280	55,370	54,320
	South West	29,870	30,550	27,260	30,010	30,860	31,380	31,960	31,510	30,800	29,990
	(England total)	307,870	317,510	293,890	319,000	328,640	337,090	343,510	337,540	328,230	326,480
	Scotland	27,200	26,940	26,810	27,480	28,340	31,170	32,510	33,190	33,730	32,490
	Northern Ireland	11,910	12,180	11,300	12,630	12,610	12,420	13,270	12,870	12,100	12,140
	Wales	16,040	15,860	16,630	16,930	17,610	18,070	18,410	17,960	17,530	17,270
	UK	363,020	372,490	348,630	376,040	387,200	398,750	407,700	401,560	391,600	388,390

### R.3 Placed applicants by region of domicile: 4 days after A level results day

Placed applicants: change relative to 2018 cycle totals

Applicant Status	Domicile	2010	2011	2012	2013	2014	2015	2016	2017	2018	2019
Placed	North East	-1%	4%	-5%	5%	3%	7%	4%	5%	0%	-5%
	North West	4%	7%	-2%	5%	8%	8%	8%	4%	0%	-0%
	Yorkshire and The Humber	-4%	2%	-6%	2%	5%	7%	8%	4%	0%	0%
	East Midlands	-5%	-2%	-9%	-1%	3%	2%	5%	4%	0%	-3%
	West Midlands	-5%	-3%	-7%	2%	5%	8%	7%	4%	0%	-1%
	East of England	-5%	-1%	-10%	-1%	1%	3%	5%	4%	0%	1%
	London	-19%	-16%	-20%	-13%	-9%	-3%	2%	0%	0%	2%
	South East	-5%	-4%	-12%	-6%	-3%	-0%	3%	2%	0%	-2%
	South West	-3%	-1%	-11%	-3%	0%	2%	4%	2%	0%	-3%
	(England total)	-6%	-3%	-10%	-3%	0%	3%	5%	3%	0%	-1%
	Scotland	-19%	-20%	-21%	-19%	-16%	-8%	-4%	-2%	0%	-4%
	Northern Ireland	-2%	1%	-7%	4%	4%	3%	10%	6%	0%	0%
	Wales	-9%	-10%	-5%	-3%	0%	3%	5%	2%	0%	-1%
	UK	-7%	-5%	-11%	-4%	-1%	2%	4%	3%	0%	-1%

Note: The percentage change is not recorded in the above table for groups with fewer than 10 placed applicants in that cycle or in the 2018 cycle.

#### R.4 Placed applicants by region of domicile: 4 days after A level results day

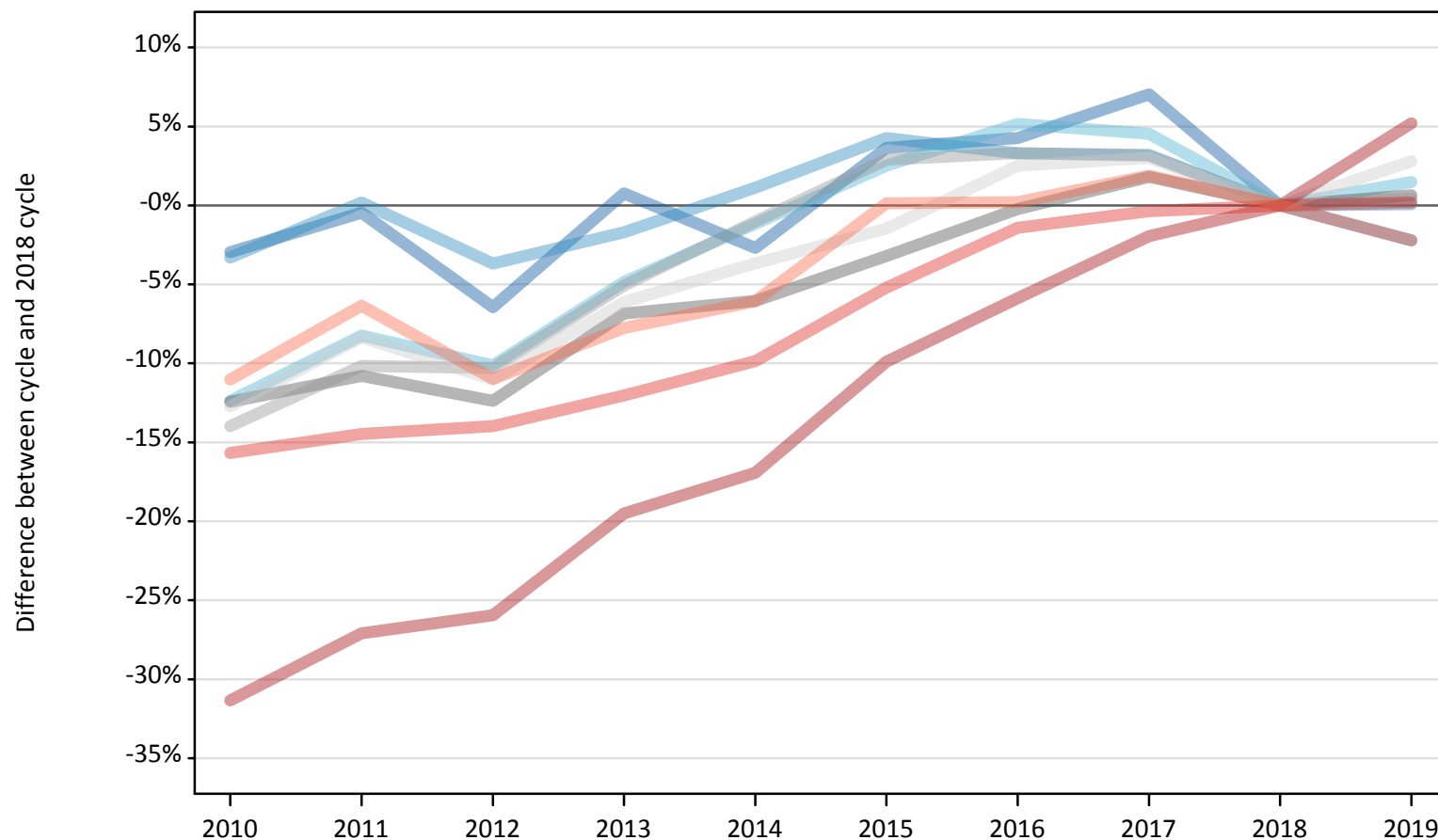
Placed applicants: absolute change relative to 2018 cycle totals

Applicant Status	Domicile	2010	2011	2012	2013	2014	2015	2016	2017	2018	2019
Placed	North East	-160	580	-740	660	380	930	520	650	0	-690
	North West	1,540	3,090	-810	1,890	3,240	3,230	3,150	1,780	0	-200
	Yorkshire and The Humber	-1,020	480	-1,810	650	1,480	1,960	2,340	1,280	0	50
	East Midlands	-1,310	-630	-2,350	-210	720	440	1,330	1,020	0	-660
	West Midlands	-1,720	-860	-2,380	530	1,790	2,690	2,340	1,410	0	-350
	East of England	-1,870	-460	-3,250	-470	340	1,030	1,850	1,270	0	480
	London	-12,110	-10,290	-13,000	-8,120	-5,970	-1,920	990	270	0	1,470
	South East	-2,780	-2,380	-6,470	-3,380	-1,630	-80	1,600	910	0	-1,040
	South West	-930	-250	-3,540	-790	60	580	1,160	720	0	-810
	(England total)	-20,360	-10,720	-34,340	-9,240	410	8,860	15,280	9,310	0	-1,750
	Scotland	-6,530	-6,790	-6,930	-6,250	-5,390	-2,560	-1,220	-540	0	-1,240
	Northern Ireland	-190	70	-800	530	510	320	1,170	770	0	40
	Wales	-1,500	-1,670	-900	-600	80	540	880	430	0	-260
	UK	-28,580	-19,110	-42,970	-15,560	-4,390	7,150	16,100	9,970	0	-3,210

## R.5 Placed 18 year old applicants by region of domicile: 4 days after A level results day

Placed 18 year old applicants: change relative to 2018 cycle totals

- North East
- North West
- Yorkshire and The Humber
- East Midlands
- West Midlands
- East of England
- London
- South East
- South West



Note: The percentage change is not plotted in the above chart for groups with fewer than 30 placed applicants in any one cycle.

## R.6 Placed 18 year old applicants by region of domicile: 4 days after A level results day

Applicant Status	Domicile	2010	2011	2012	2013	2014	2015	2016	2017	2018	2019
Placed	North East	7,500	7,700	7,230	7,790	7,520	8,010	8,060	8,280	7,730	7,560
	North West	23,980	24,840	23,880	24,370	25,070	25,850	25,610	25,590	24,800	24,810
	Yorkshire and The Humber	15,350	16,070	15,740	16,670	17,310	17,960	18,420	18,310	17,520	17,780
	East Midlands	13,540	13,790	13,550	14,410	14,530	14,970	15,430	15,740	15,460	15,560
	West Midlands	16,920	17,670	17,640	18,670	19,470	20,240	20,320	20,290	19,670	19,760
	East of England	18,760	19,700	19,130	20,180	20,710	21,180	22,040	22,140	21,500	22,100
	London	24,960	26,510	26,920	29,260	30,200	32,750	34,220	35,650	36,350	38,250
	South East	29,000	29,410	29,580	30,250	31,000	32,600	33,900	34,260	34,390	34,450
	South West	14,920	15,700	14,920	15,460	15,750	16,790	16,800	17,080	16,760	16,390
	(England total)	164,930	171,390	168,600	177,060	181,560	190,350	194,810	197,330	194,180	196,670
	Scotland	14,390	13,750	13,840	13,960	14,210	14,310	14,550	14,530	14,550	13,980
	Northern Ireland	7,800	7,700	7,270	7,880	7,670	7,590	7,860	7,780	7,240	7,210
	Wales	9,180	8,850	9,300	9,300	9,610	10,080	10,280	9,970	9,830	9,620
	UK	196,290	201,690	199,010	208,210	213,040	222,320	227,500	229,610	225,800	227,470

## R.7 Placed 18 year old applicants by region of domicile: 4 days after A level results day

Placed 18 year old applicants: change relative to 2018 cycle totals

Applicant Status	Domicile	2010	2011	2012	2013	2014	2015	2016	2017	2018	2019
Placed	North East	-3%	-0%	-6%	1%	-3%	4%	4%	7%	0%	-2%
	North West	-3%	0%	-4%	-2%	1%	4%	3%	3%	0%	0%
	Yorkshire and The Humber	-12%	-8%	-10%	-5%	-1%	3%	5%	5%	0%	1%
	East Midlands	-12%	-11%	-12%	-7%	-6%	-3%	-0%	2%	0%	1%
	West Midlands	-14%	-10%	-10%	-5%	-1%	3%	3%	3%	0%	0%
	East of England	-13%	-8%	-11%	-6%	-4%	-1%	3%	3%	0%	3%
	London	-31%	-27%	-26%	-20%	-17%	-10%	-6%	-2%	0%	5%
	South East	-16%	-14%	-14%	-12%	-10%	-5%	-1%	-0%	0%	0%
	South West	-11%	-6%	-11%	-8%	-6%	0%	0%	2%	0%	-2%
	(England total)	-15%	-12%	-13%	-9%	-6%	-2%	0%	2%	0%	1%
	Scotland	-1%	-5%	-5%	-4%	-2%	-2%	-0%	-0%	0%	-4%
	Northern Ireland	8%	6%	0%	9%	6%	5%	9%	7%	0%	-0%
	Wales	-7%	-10%	-5%	-5%	-2%	3%	5%	1%	0%	-2%
	UK	-13%	-11%	-12%	-8%	-6%	-2%	1%	2%	0%	1%

Note: The percentage change is not recorded in the above table for groups with fewer than 10 placed applicants in that cycle or in the 2018 cycle.

## R.8 Placed 18 year old applicants by region of domicile: 4 days after A level results day

Placed 18 year old applicants: absolute change relative to 2018 cycle totals

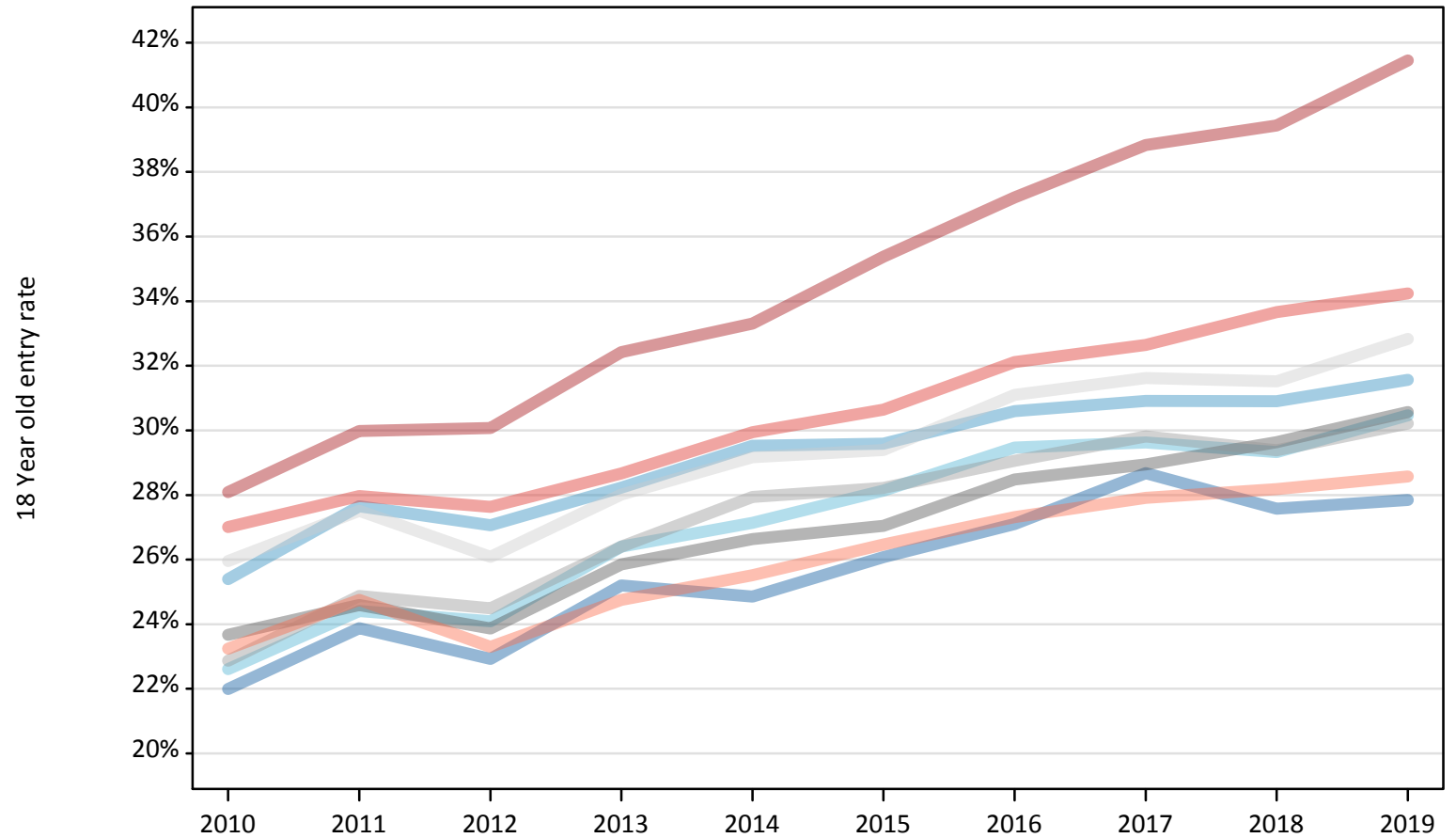
Applicant Status	Domicile	2010	2011	2012	2013	2014	2015	2016	2017	2018	2019
Placed	North East	-230	-40	-500	60	-210	280	330	540	0	-170
	North West	-820	50	-920	-420	280	1,060	820	790	0	20
	Yorkshire and The Humber	-2,170	-1,440	-1,770	-850	-200	440	910	800	0	260
	East Midlands	-1,920	-1,670	-1,920	-1,060	-930	-500	-40	280	0	100
	West Midlands	-2,750	-2,000	-2,030	-1,000	-200	570	650	620	0	90
	East of England	-2,740	-1,800	-2,370	-1,310	-790	-320	540	650	0	600
	London	-11,400	-9,850	-9,440	-7,090	-6,150	-3,600	-2,140	-710	0	1,890
	South East	-5,390	-4,980	-4,810	-4,140	-3,390	-1,790	-490	-130	0	70
	South West	-1,850	-1,070	-1,840	-1,300	-1,020	20	40	320	0	-370
	(England total)	-29,250	-22,790	-25,580	-17,120	-12,620	-3,830	630	3,160	0	2,490
	Scotland	-170	-800	-710	-590	-350	-250	0	-20	0	-580
	Northern Ireland	560	460	30	640	430	350	620	540	0	-30
	Wales	-650	-980	-530	-530	-220	250	460	140	0	-210
	UK	-29,510	-24,100	-26,790	-17,590	-12,760	-3,470	1,700	3,810	0	1,670



## R.9 Placed 18 year old applicants by region of domicile: 4 days after A level results day

Placed 18 year old applicants: entry rate

- North East
- North West
- Yorkshire and The Humber
- East Midlands
- West Midlands
- East of England
- London
- South East
- South West



## R.10 Placed 18 year old applicants by region of domicile: 4 days after A level results day

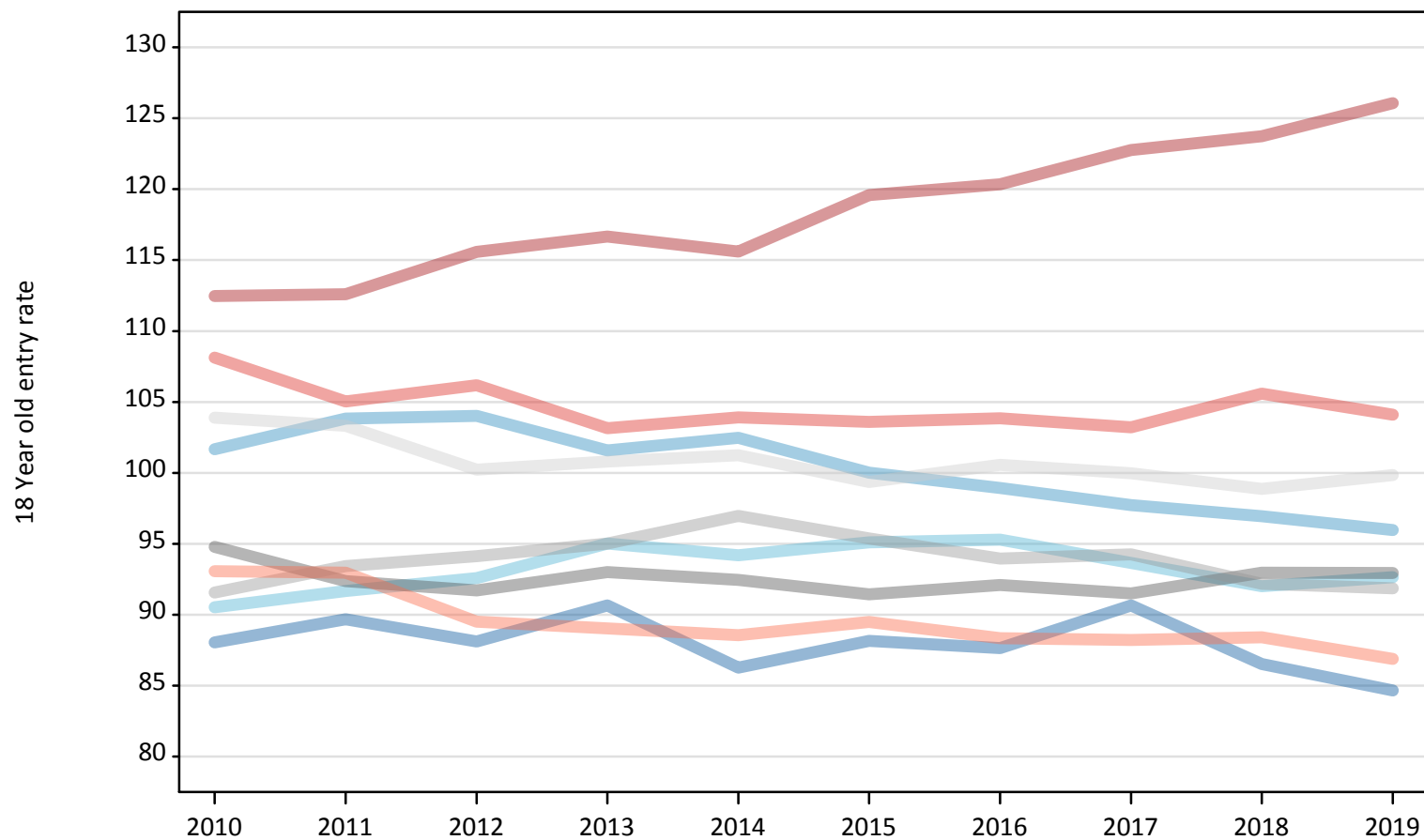
Placed 18 year old applicants: entry rate

Applicant Status	Domicile	2010	2011	2012	2013	2014	2015	2016	2017	2018	2019
Placed	North East	22.0%	23.9%	22.9%	25.2%	24.9%	26.1%	27.1%	28.7%	27.6%	27.8%
	North West	25.4%	27.6%	27.1%	28.2%	29.5%	29.6%	30.6%	30.9%	30.9%	31.6%
	Yorkshire and The Humber	22.6%	24.4%	24.1%	26.4%	27.1%	28.1%	29.5%	29.6%	29.3%	30.5%
	East Midlands	23.7%	24.6%	23.9%	25.9%	26.6%	27.0%	28.5%	28.9%	29.6%	30.6%
	West Midlands	22.9%	24.9%	24.5%	26.4%	27.9%	28.2%	29.1%	29.8%	29.4%	30.2%
	East of England	26.0%	27.5%	26.1%	28.0%	29.2%	29.4%	31.1%	31.6%	31.5%	32.8%
	London	28.1%	30.0%	30.1%	32.4%	33.3%	35.4%	37.2%	38.8%	39.4%	41.5%
	South East	27.0%	28.0%	27.6%	28.7%	29.9%	30.6%	32.1%	32.6%	33.7%	34.2%
	South West	23.2%	24.8%	23.3%	24.8%	25.5%	26.5%	27.3%	27.9%	28.2%	28.6%
	(England total)	25.0%	26.6%	26.0%	27.8%	28.8%	29.6%	30.9%	31.6%	31.9%	32.9%
	Scotland	22.5%	21.9%	22.3%	22.7%	23.2%	23.8%	24.7%	25.3%	26.2%	26.0%
	Northern Ireland	30.6%	30.8%	28.9%	32.2%	31.6%	30.6%	32.1%	32.1%	31.2%	32.2%
	Wales	23.0%	22.9%	24.1%	24.6%	25.6%	26.7%	28.3%	28.1%	28.6%	28.6%
	UK	24.9%	26.2%	25.7%	27.4%	28.3%	29.0%	30.4%	31.0%	31.3%	32.1%

### R.11 Placed 18 year old applicants by region of domicile: 4 days after A level results day

Placed 18 year old applicants: entry rates (indexed to 100 = England)

- North East
- North West
- Yorkshire and The Humber
- East Midlands
- West Midlands
- East of England
- London
- South East
- South West



### R.12 Placed 18 year old applicants by region of domicile: 4 days after A level results day

Placed 18 year old applicants: entry rate (indexed to 100 = England)

Applicant Status	Domicile	2010	2011	2012	2013	2014	2015	2016	2017	2018	2019
Placed	North East	88	90	88	91	86	88	88	91	87	85
	North West	102	104	104	102	102	100	99	98	97	96
	Yorkshire and The Humber	91	92	93	95	94	95	95	94	92	93
	East Midlands	95	92	92	93	92	91	92	92	93	93
	West Midlands	92	93	94	95	97	95	94	94	92	92
	East of England	104	103	100	101	101	99	101	100	99	100
	London	112	113	116	117	116	120	120	123	124	126
	South East	108	105	106	103	104	104	104	103	106	104
	South West	93	93	90	89	89	89	88	88	88	87
	(England total)	100	100	100	100	100	100	100	100	100	100