

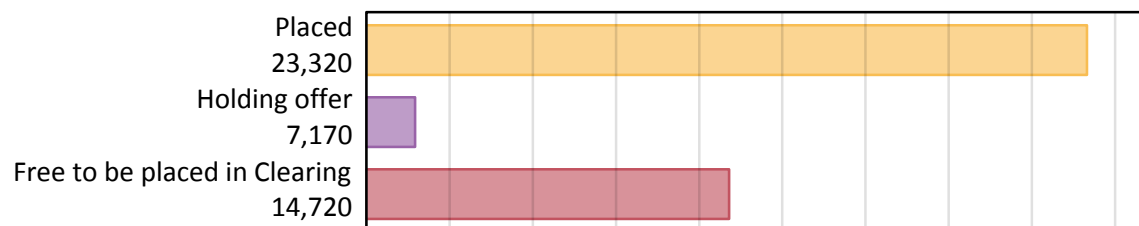
Daily Clearing Analysis: Overview

B7 Nursing analysis at 00:05 on Monday 19 August 2019 (4 days after A level results day)

AB.1 Placed applicants to nursing from all domiciles, 2019 cycle

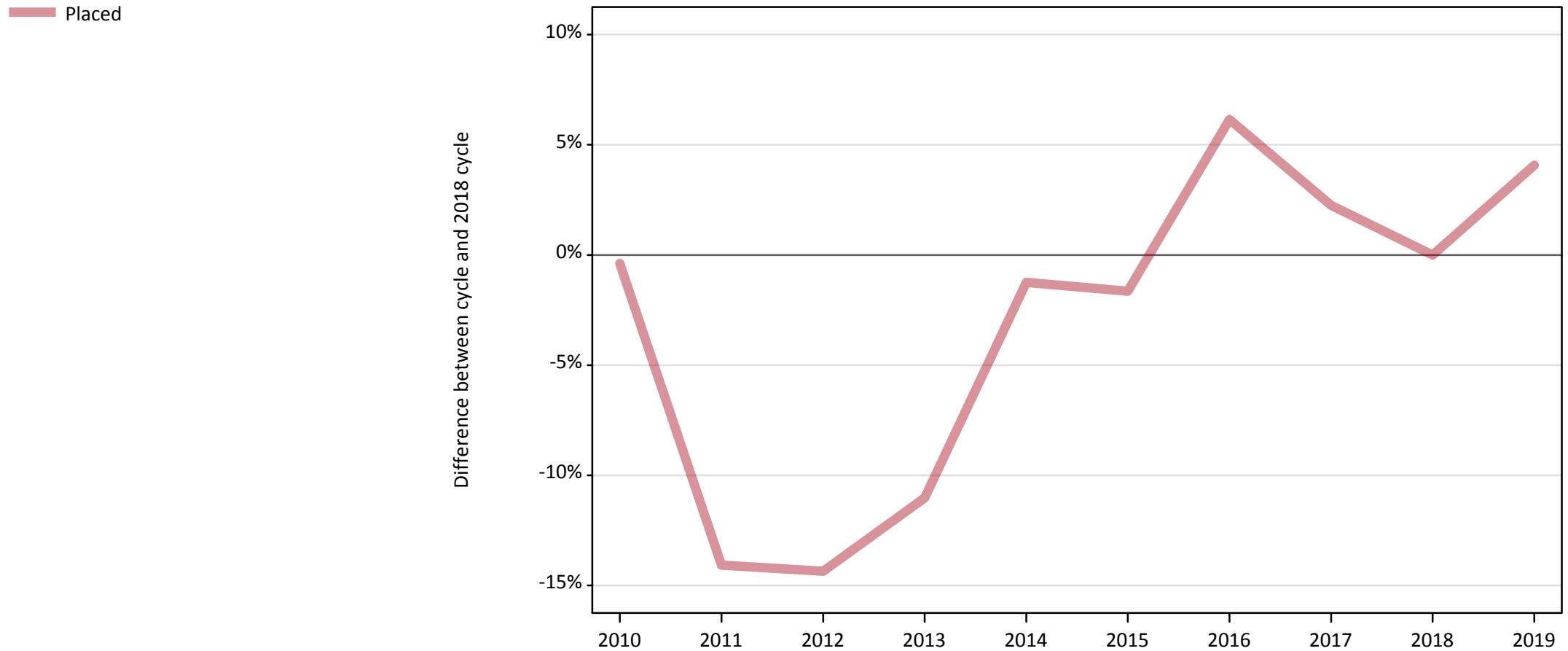
Applicant type	Status	2019
Main scheme	Placed (Clearing)	640
	Placed (Adjustment)	10
	Placed (Firm)	20,940
	Placed (Insurance)	490
	Placed (Other)	1,080
	Holding offer	7,170
	Free to be placed in Clearing	14,720
Direct to Clearing	Placed (Direct to Clearing)	170
	Other (Direct to Clearing)	450
All applicants	Placed	23,320

AB.2 Summary of nursing applicants who are placed, holding offers or free to be placed in Clearing (all domiciles)



AB.3 Placed applicants to nursing from all domiciles: 4 days after A level results day

Placed applicants to nursing: difference between cycle and 2018 cycle



Note: The percentage change is not plotted in the above chart for groups with fewer than 30 placed applicants in any one cycle.

AB.4 Placed applicants to nursing from all domiciles: 4 days after A level results day

Placed applicants to nursing: applicants at 4 days after A level results day

Applicant type	Status	2010	2011	2012	2013	2014	2015	2016	2017	2018	2019
All applicants	Placed	22,320	19,260	19,190	19,940	22,130	22,040	23,790	22,920	22,410	23,320

AB.5 Placed applicants to nursing from all domiciles: 4 days after A level results day

Placed applicants to nursing: difference between cycle and 2018 cycle

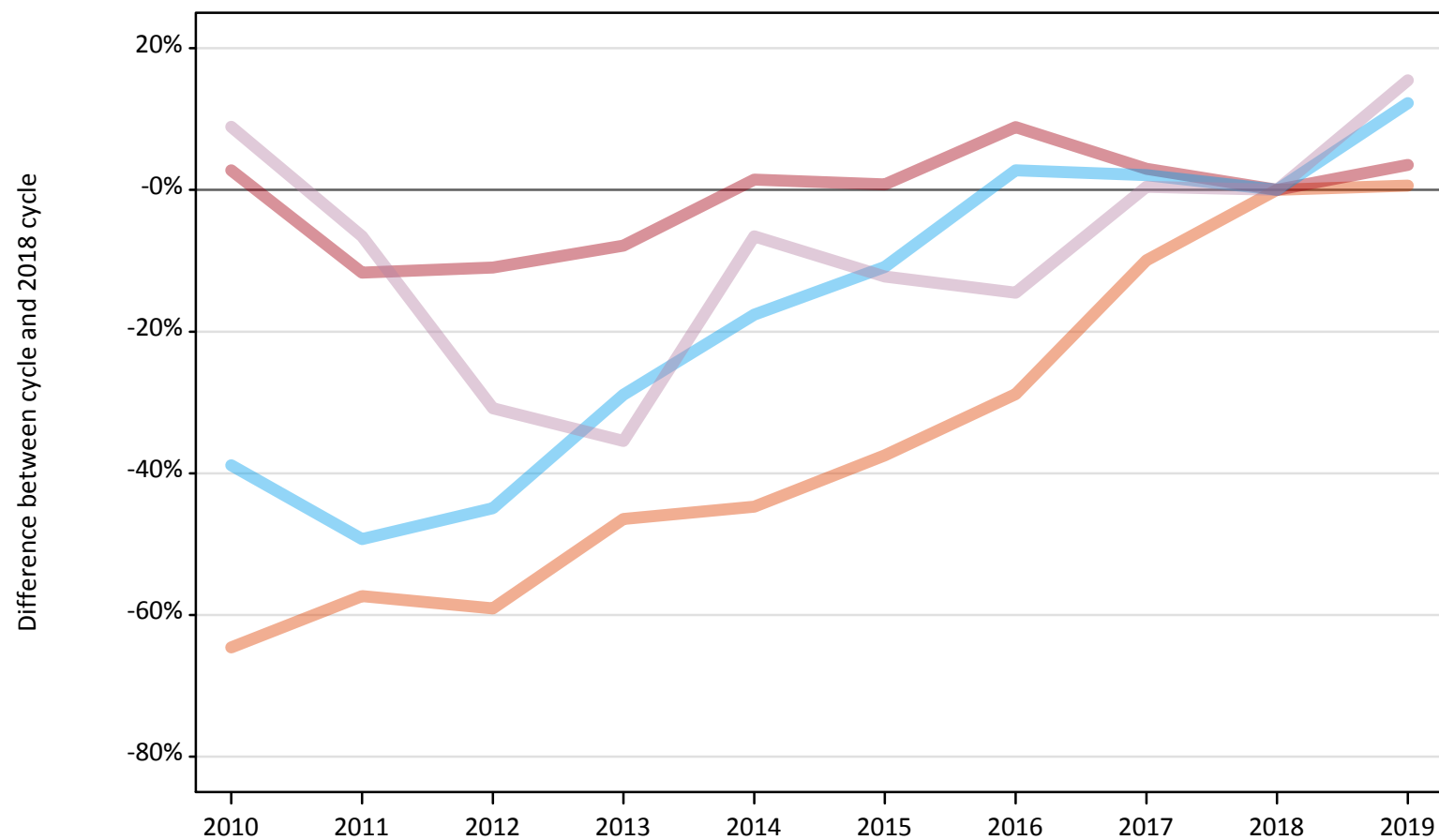
Applicant type	Status	2010	2011	2012	2013	2014	2015	2016	2017	2018	2019
All applicants	Placed	-0%	-14%	-14%	-11%	-1%	-2%	6%	2%	0%	4%

Note: The percentage change is not recorded in the above table for groups with fewer than 10 placed applicants in that cycle or in the 2018 cycle.

AB.6 Placed main scheme applicants to nursing from all domiciles: 4 days after A level results day

All Main scheme placed routes (excluding Adjustment): difference between cycle and 2018 cycle

- Placed (Clearing)
- Placed (Firm)
- Placed (Insurance)
- Placed (Other)



Note: The percentage change is not plotted in the above chart for groups with fewer than 30 placed applicants in any one cycle.

AB.7 Placed main scheme applicants to nursing from all domiciles: 4 days after A level results day

All Main scheme placed routes (excluding Adjustment): applicants at 4 days after A level results day

Applicant type	Status	2010	2011	2012	2013	2014	2015	2016	2017	2018	2019
Main scheme	Placed (Clearing)	230	270	260	340	350	400	450	570	640	640
	Placed (Firm)	20,790	17,870	18,010	18,640	20,530	20,390	22,030	20,830	20,230	20,940
	Placed (Insurance)	260	220	240	310	360	390	440	440	430	490
	Placed (Other)	1,010	870	640	600	870	820	800	940	930	1,080

AB.8 Placed main scheme applicants to nursing from all domiciles: 4 days after A level results day

All Main scheme placed routes (excluding Adjustment): difference between cycle and 2018 cycle

Applicant type	Status	2010	2011	2012	2013	2014	2015	2016	2017	2018	2019
Main scheme	Placed (Clearing)	-65%	-57%	-59%	-46%	-45%	-37%	-29%	-10%	0%	1%
	Placed (Firm)	3%	-12%	-11%	-8%	1%	1%	9%	3%	0%	4%
	Placed (Insurance)	-39%	-49%	-45%	-29%	-18%	-11%	3%	2%	0%	12%
	Placed (Other)	9%	-7%	-31%	-35%	-7%	-12%	-15%	0%	0%	15%

Note: The percentage change is not recorded in the above table for groups with fewer than 10 placed applicants in that cycle or in the 2018 cycle.

AB.9 Main scheme applicants placed to nursing through adjustment: 4 days after A level results day

Placed through adjustment: difference between cycle and 2018 cycle

[This chart is not part of this report]

AB.10 Main scheme applicants placed to nursing through adjustment: 4 days after A level results day

Placed through adjustment: applicants at 4 days after A level results day

Applicant type	Status	2010	2011	2012	2013	2014	2015	2016	2017	2018	2019
Main scheme	Placed (Adjustment)	0	0	0	0	0	0	0	10	0	10

AB.11 Main scheme applicants placed to nursing through adjustment: 4 days after A level results day

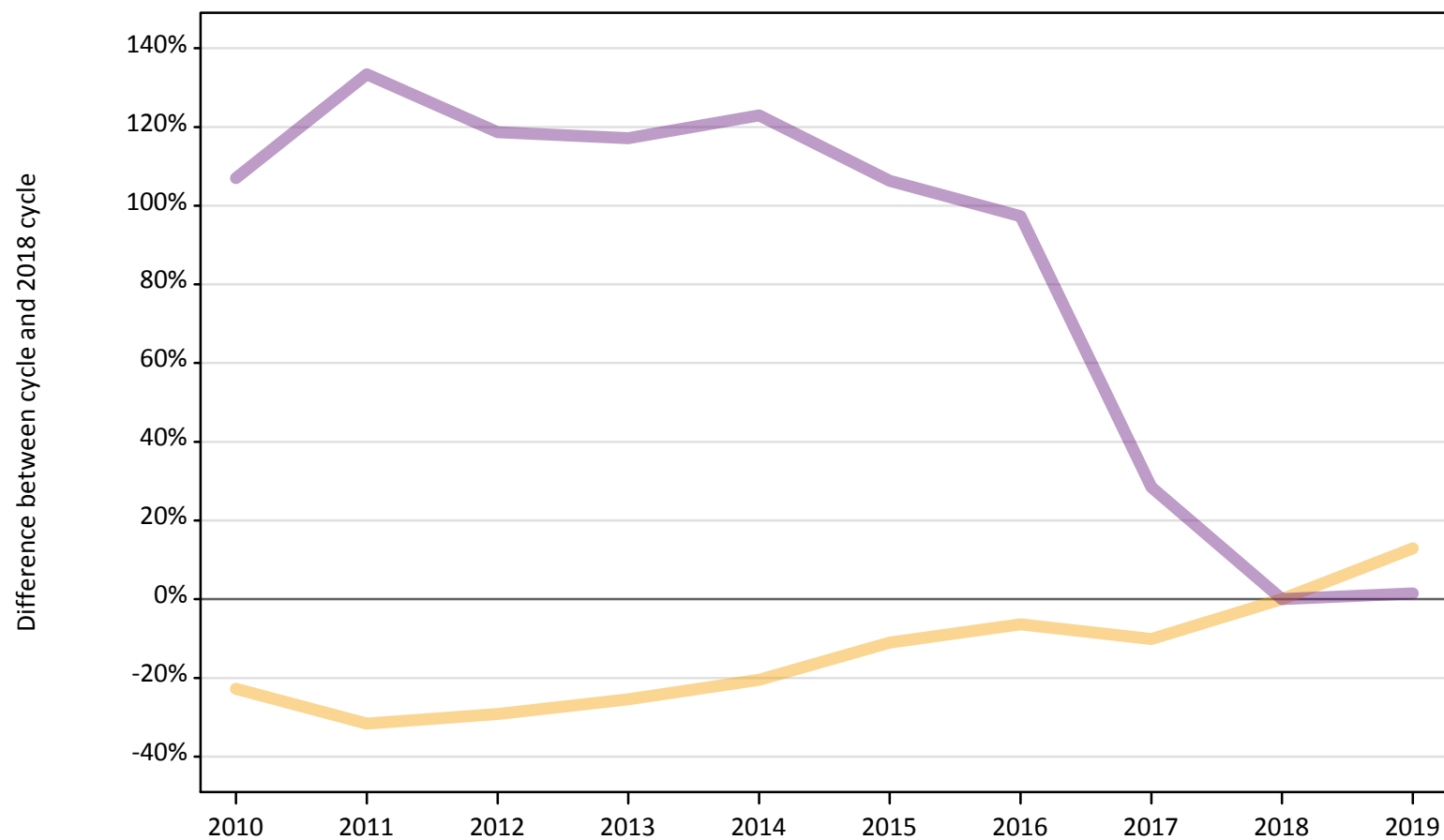
Placed through adjustment: difference between cycle and 2018 cycle

[This table is not part of this report]

AB.12 Main scheme applicants to nursing not currently placed from all domiciles: 4 days after A level results day

Applicants in unplaced states: difference between cycle and 2018 cycle

— Holding offer
— Free to be placed in Clearing



Note: The percentage change is not plotted in the above chart for groups with fewer than 30 unplaced applicants in any one cycle.

AB.13 Main scheme applicants to nursing not currently placed from all domiciles: 4 days after A level results day

Applicants in unplaced states: applicants at 4 days after A level results day

Applicant type	Status	2010	2011	2012	2013	2014	2015	2016	2017	2018	2019
Main scheme	Holding offer	4,900	4,340	4,490	4,730	5,050	5,650	5,940	5,710	6,350	7,170
	Free to be placed in Clearing	30,030	33,850	31,720	31,500	32,340	29,930	28,620	18,640	14,510	14,720

AB.14 Main scheme applicants to nursing not currently placed from all domiciles: 4 days after A level results day

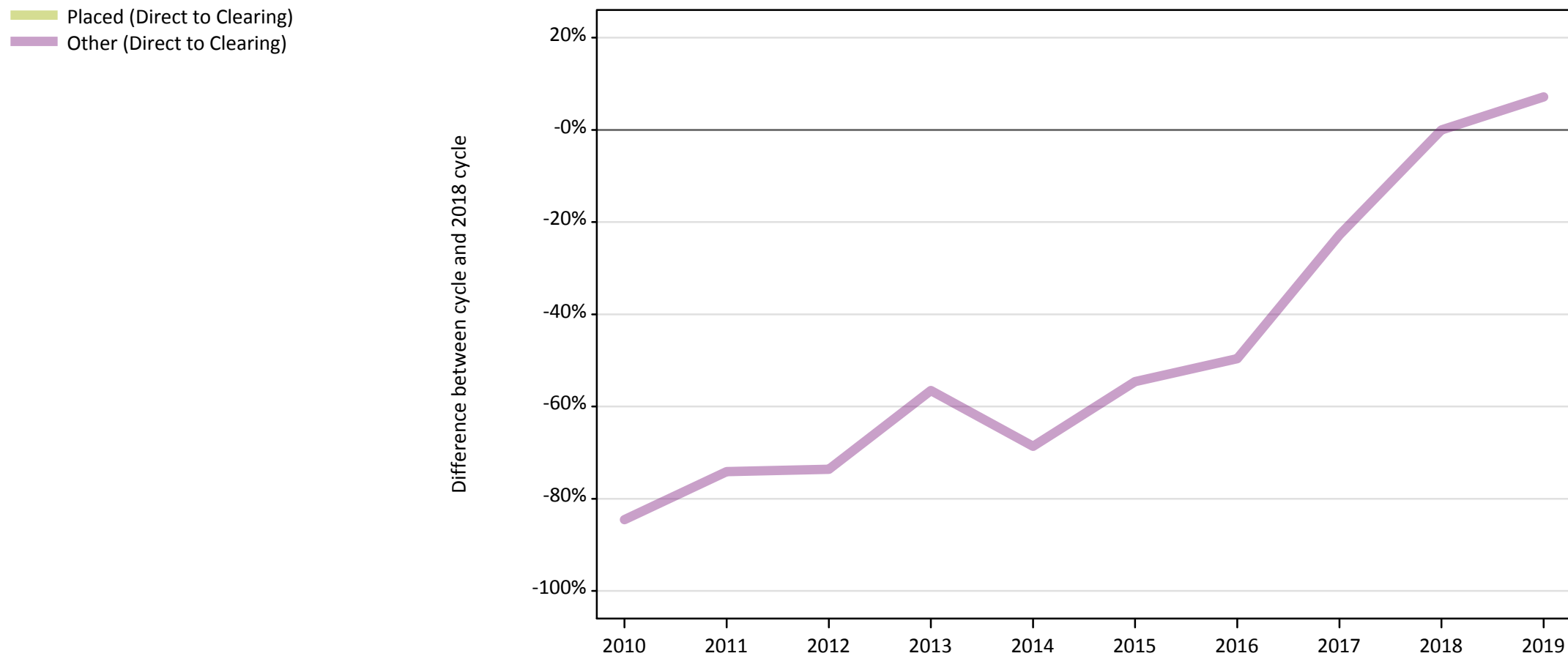
Applicants in unplaced states: difference between cycle and 2018 cycle

Applicant type	Status	2010	2011	2012	2013	2014	2015	2016	2017	2018	2019
Main scheme	Holding offer	-23%	-32%	-29%	-25%	-20%	-11%	-6%	-10%	0%	13%
	Free to be placed in Clearing	107%	133%	119%	117%	123%	106%	97%	28%	0%	1%

Note: The percentage change is not recorded in the above table for groups with fewer than 10 unplaced applicants in that cycle or in the 2018 cycle.

AB.15 Direct to Clearing applicants from all domiciles: 4 days after A level results day

Direct to Clearing: difference between cycle and 2018 cycle



Note: The percentage change is not plotted in the above chart for groups with fewer than 30 placed applicants in any one cycle.

AB.16 Direct to Clearing applicants from all domiciles: 4 days after A level results day

Direct to Clearing 4 days after A level results day

Applicant type	Status	2010	2011	2012	2013	2014	2015	2016	2017	2018	2019
Direct to Clearing	Placed (Direct to Clearing)	30	20	40	50	30	50	70	120	180	170
	Other (Direct to Clearing)	70	110	110	180	130	190	210	330	420	450

AB.17 Direct to Clearing applicants from all domiciles: 4 days after A level results day

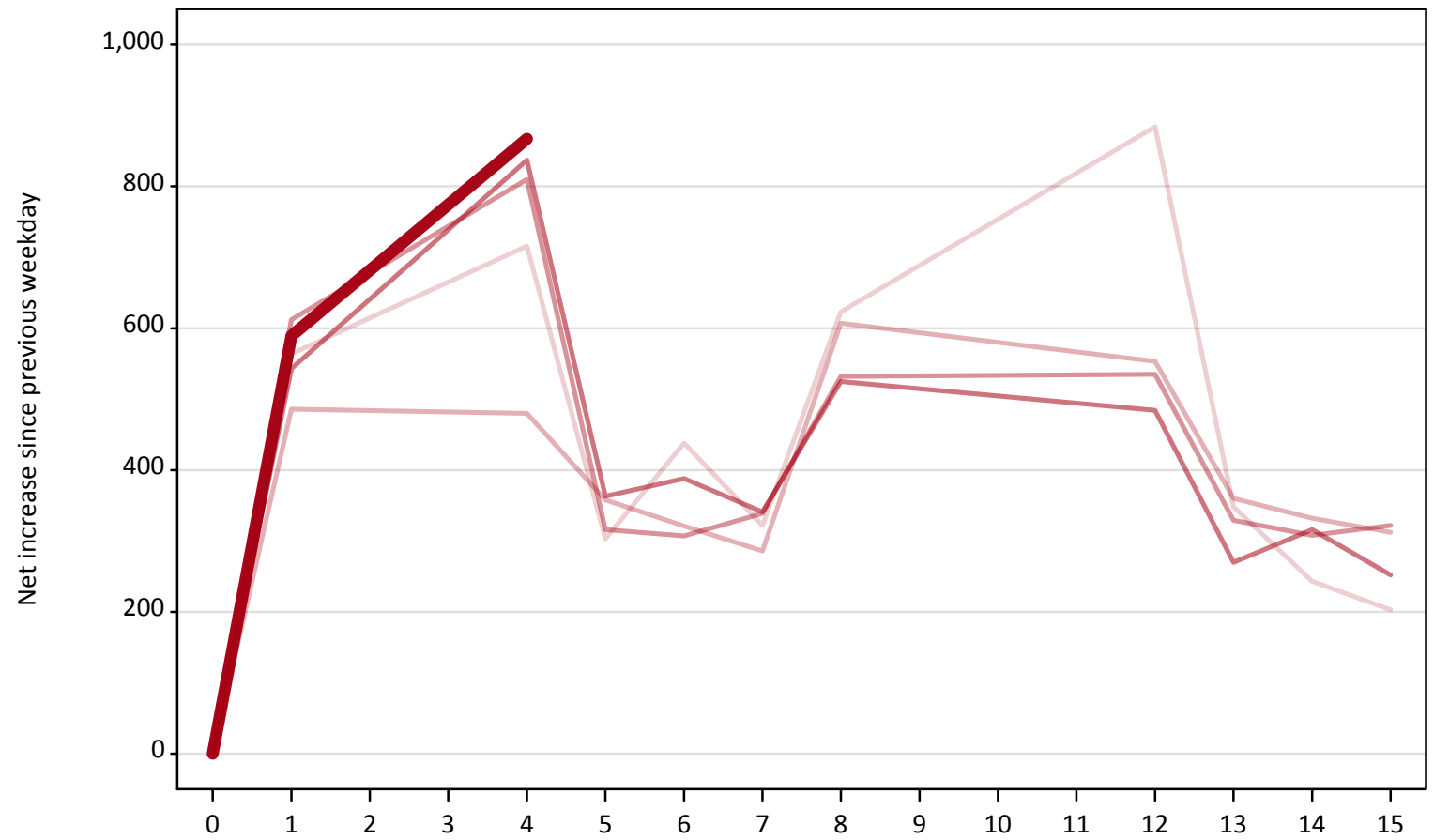
Direct to Clearing: difference between cycle and 2018 cycle

Applicant type	Status	2010	2011	2012	2013	2014	2015	2016	2017	2018	2019
Direct to Clearing	Placed (Direct to Clearing)	-82%	-86%	-78%	-72%	-86%	-74%	-61%	-30%	0%	-3%
	Other (Direct to Clearing)	-85%	-74%	-74%	-57%	-69%	-55%	-50%	-23%	0%	7%

Note: The percentage change is not recorded in the above table for groups with fewer than 10 placed applicants in that cycle or in the 2018 cycle.

AB.18 All Placed: Daily net change (from all domiciles)
Net increase since previous weekday (2019 cycle up to 4 days after A level results day)

- 2015
- 2016
- 2017
- 2018
- 2019**

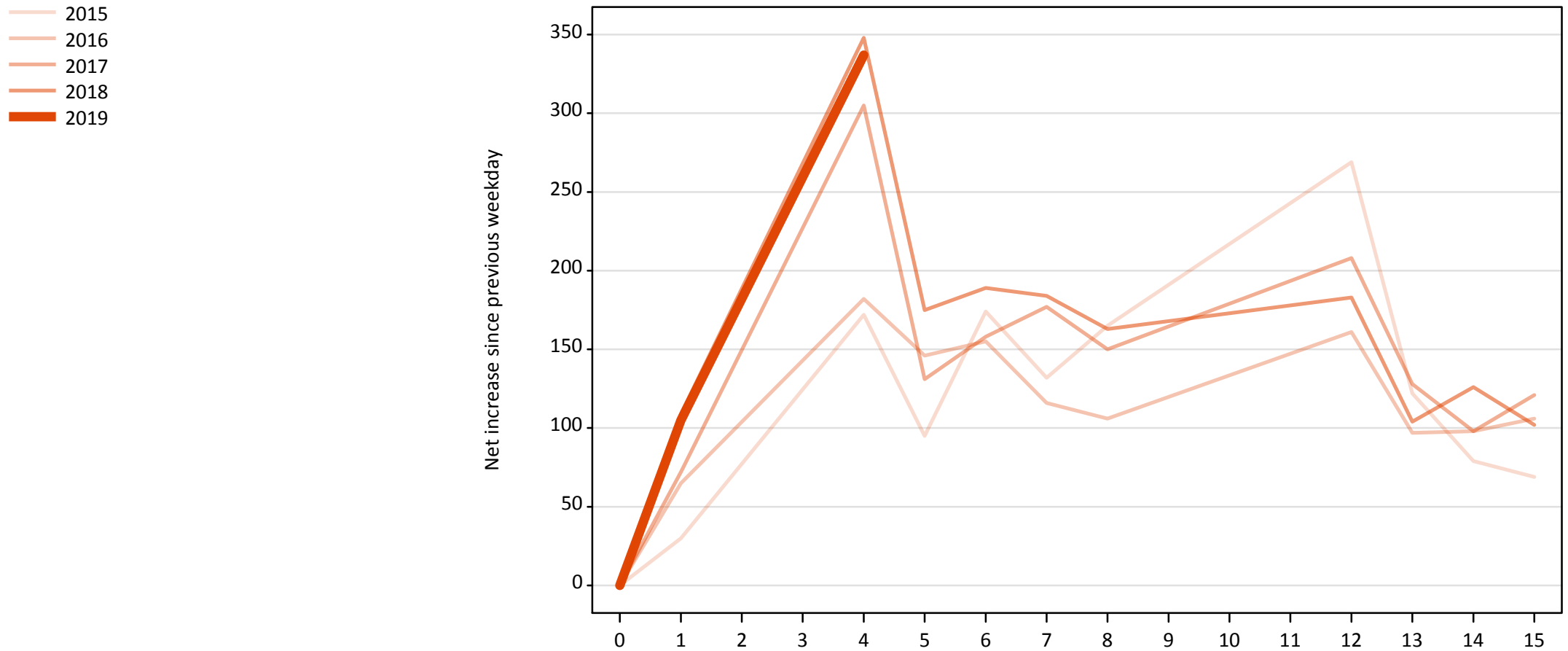


AB.19 All Placed: Daily net change (from all domiciles)

Net increase since previous weekday (2019 cycle up to 4 days after A level results day)

Applicant status, days since A level results day		2015	2016	2017	2018	2019
All Placed	0	0	0	0	0	0
	1	560	490	610	540	590
	4	720	480	810	840	870
	5	300	360	320	360	
	6	440	320	310	390	
	7	320	290	340	340	
	8	620	610	530	530	
	12	880	550	540	480	
	13	350	360	330	270	
	14	240	330	310	320	
	15	200	310	320	250	

AB.20 Placed through Clearing only: Daily net change (from all domiciles)
Net increase since previous weekday (2019 cycle up to 4 days after A level results day)



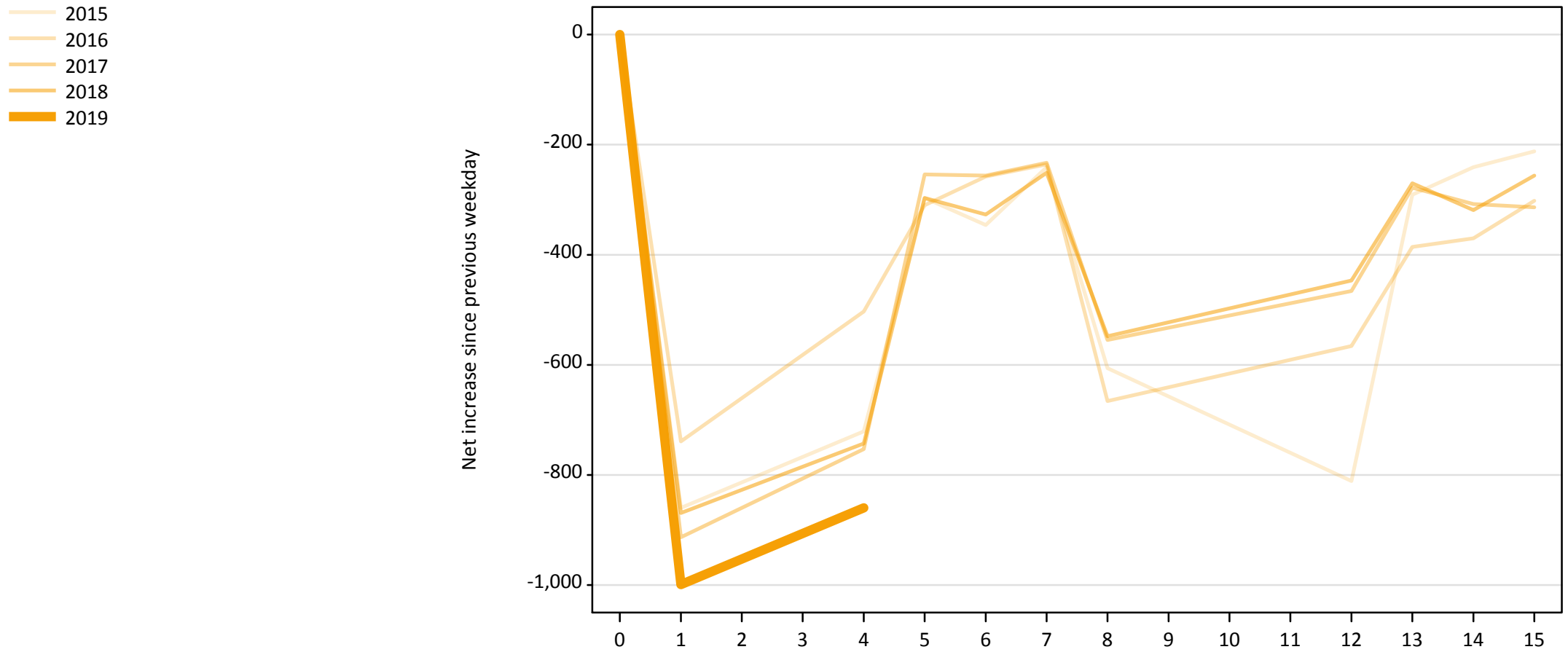
AB.21 Placed through Clearing only: Daily net change (from all domiciles)

Net increase since previous weekday (2019 cycle up to 4 days after A level results day)

Applicant status, days since A level results day		2015	2016	2017	2018	2019
Placed through Clearing only	0	0	0	0	0	0
	1	30	70	70	110	110
	4	170	180	310	350	340
	5	100	150	130	180	
	6	170	160	160	190	
	7	130	120	180	180	
	8	170	110	150	160	
	12	270	160	210	180	
	13	120	100	130	100	
	14	80	100	100	130	
	15	70	110	120	100	

AB.22 Holding Offer: Daily net change (from all domiciles)

Net increase since previous weekday (2019 cycle up to 4 days after A level results day)



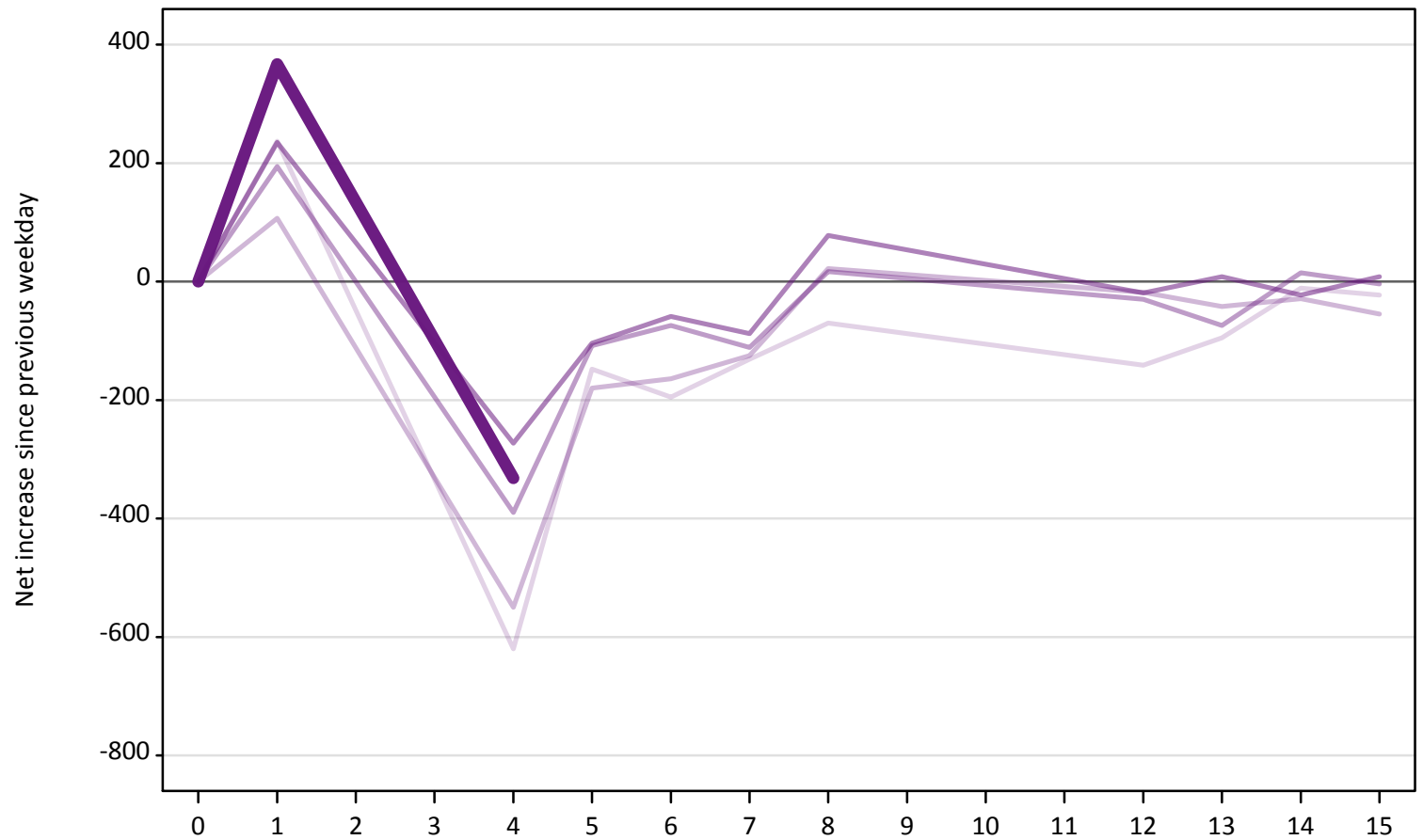
AB.23 Holding Offer: Daily net change (from all domiciles)

Net increase since previous weekday (2019 cycle up to 4 days after A level results day)

Applicant status, days since A level results day		2015	2016	2017	2018	2019
Holding Offer	0	0	0	0	0	0
	1	-860	-740	-910	-870	-1,000
	4	-720	-500	-750	-740	-860
	5	-300	-310	-250	-300	
	6	-350	-260	-260	-330	
	7	-240	-240	-230	-250	
	8	-610	-670	-560	-550	
	12	-810	-570	-470	-450	
	13	-290	-390	-280	-270	
	14	-240	-370	-310	-320	
	15	-210	-300	-310	-260	

AB.24 Free to be placed in Clearing: Daily net change (from all domiciles)
Net increase since previous weekday (2019 cycle up to 4 days after A level results day)

- 2015
- 2016
- 2017
- 2018
- 2019



AB.25 Free to be placed in Clearing: Daily net change (from all domiciles)
 Net increase since previous weekday (2019 cycle up to 4 days after A level results day)

Applicant status, days since A level results day		2015	2016	2017	2018	2019
Free to be placed in Clearing	0	0	0	0	0	0
	1	240	110	190	240	370
	4	-620	-550	-390	-270	-330
	5	-150	-180	-110	-100	
	6	-200	-160	-70	-60	
	7	-130	-130	-110	-90	
	8	-70	20	20	80	
	12	-140	-20	-30	-20	
	13	-100	-40	-70	10	
	14	-10	-30	20	-20	
	15	-20	-60	0	10	