

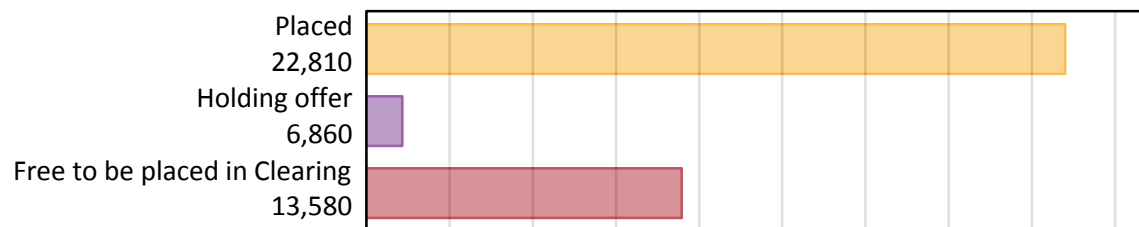
Daily Clearing Analysis: Overview

B7 Nursing analysis at 00:05 on Monday 19 August 2019 (4 days after A level results day)

AB.1 Placed applicants to nursing from the UK, 2019 cycle

Applicant type	Status	2019
Main scheme	Placed (Clearing)	630
	Placed (Adjustment)	10
	Placed (Firm)	20,480
	Placed (Insurance)	470
	Placed (Other)	1,050
	Holding offer	6,860
	Free to be placed in Clearing	13,580
Direct to Clearing	Placed (Direct to Clearing)	170
	Other (Direct to Clearing)	430
All applicants	Placed	22,810

AB.2 Summary of nursing applicants who are placed, holding offers or free to be placed in Clearing (the UK)



AB.3 Placed applicants to nursing from the UK: 4 days after A level results day

Placed applicants to nursing: difference between cycle and 2018 cycle



Note: The percentage change is not plotted in the above chart for groups with fewer than 30 placed applicants in any one cycle.

AB.4 Placed applicants to nursing from the UK: 4 days after A level results day

Placed applicants to nursing: applicants at 4 days after A level results day

Applicant type	Status	2010	2011	2012	2013	2014	2015	2016	2017	2018	2019
All applicants	Placed	21,840	18,780	18,760	19,450	21,680	21,560	23,280	22,430	21,960	22,810

AB.5 Placed applicants to nursing from the UK: 4 days after A level results day

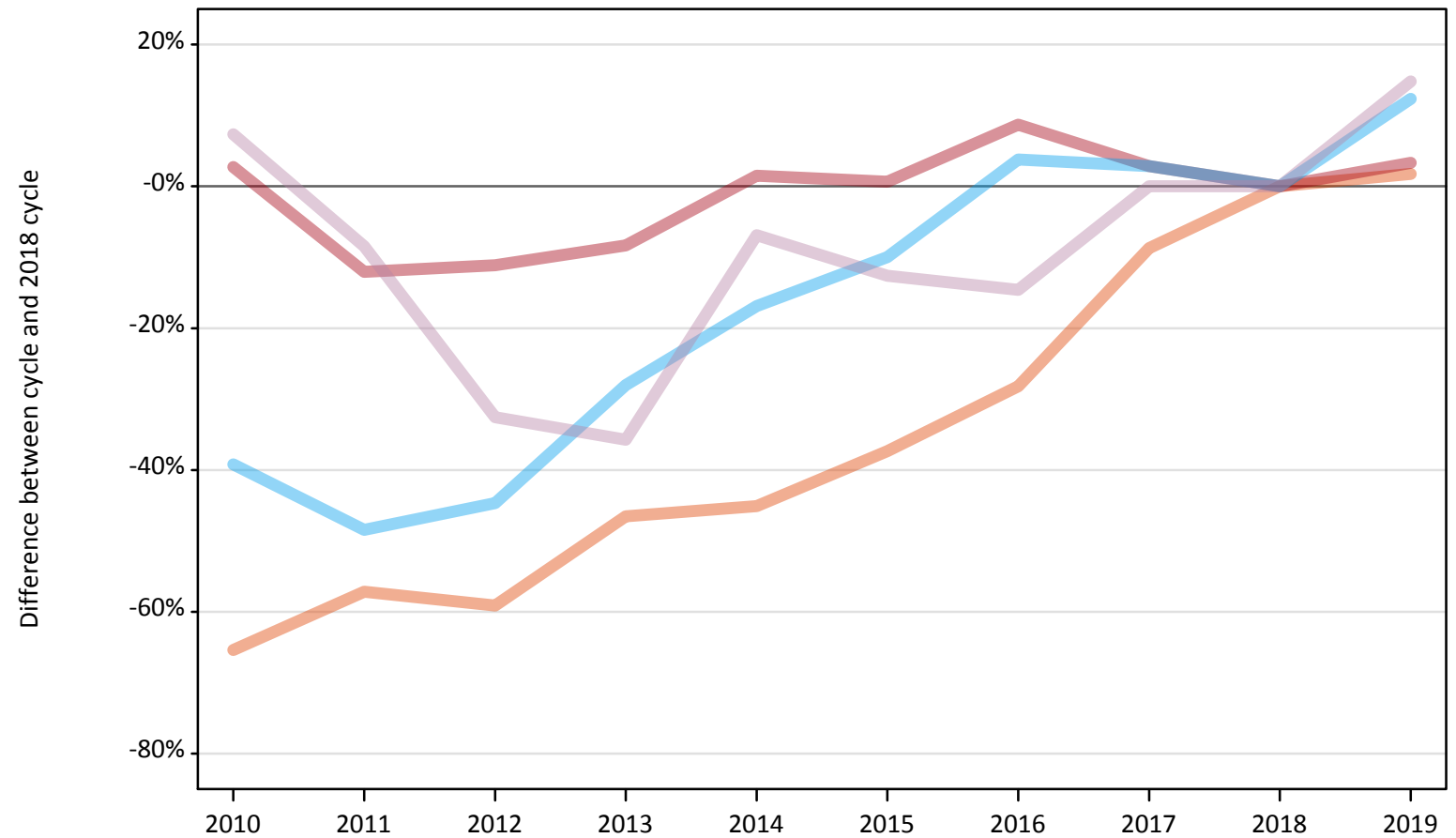
Placed applicants to nursing: difference between cycle and 2018 cycle

Applicant type	Status	2010	2011	2012	2013	2014	2015	2016	2017	2018	2019
All applicants	Placed	-1%	-14%	-15%	-11%	-1%	-2%	6%	2%	0%	4%

Note: The percentage change is not recorded in the above table for groups with fewer than 10 placed applicants in that cycle or in the 2018 cycle.

AB.6 Placed main scheme applicants to nursing from the UK: 4 days after A level results day
All Main scheme placed routes (excluding Adjustment): difference between cycle and 2018 cycle

- Placed (Clearing)
- Placed (Firm)
- Placed (Insurance)
- Placed (Other)



Note: The percentage change is not plotted in the above chart for groups with fewer than 30 placed applicants in any one cycle.

AB.7 Placed main scheme applicants to nursing from the UK: 4 days after A level results day

All Main scheme placed routes (excluding Adjustment): applicants at 4 days after A level results day

Applicant type	Status	2010	2011	2012	2013	2014	2015	2016	2017	2018	2019
Main scheme	Placed (Clearing)	220	270	250	330	340	390	450	570	620	630
	Placed (Firm)	20,360	17,440	17,620	18,170	20,120	19,950	21,550	20,390	19,820	20,480
	Placed (Insurance)	260	220	230	300	350	380	440	430	420	470
	Placed (Other)	980	840	620	590	850	800	780	910	910	1,050

AB.8 Placed main scheme applicants to nursing from the UK: 4 days after A level results day

All Main scheme placed routes (excluding Adjustment): difference between cycle and 2018 cycle

Applicant type	Status	2010	2011	2012	2013	2014	2015	2016	2017	2018	2019
Main scheme	Placed (Clearing)	-65%	-57%	-59%	-47%	-45%	-37%	-28%	-9%	0%	2%
	Placed (Firm)	3%	-12%	-11%	-8%	1%	1%	9%	3%	0%	3%
	Placed (Insurance)	-39%	-48%	-45%	-28%	-17%	-10%	4%	3%	0%	12%
	Placed (Other)	7%	-8%	-33%	-36%	-7%	-13%	-15%	0%	0%	15%

Note: The percentage change is not recorded in the above table for groups with fewer than 10 placed applicants in that cycle or in the 2018 cycle.

AB.9 Main scheme applicants placed to nursing through adjustment: 4 days after A level results day

Placed through adjustment: difference between cycle and 2018 cycle

[This chart is not part of this report]

AB.10 Main scheme applicants placed to nursing through adjustment: 4 days after A level results day

Placed through adjustment: applicants at 4 days after A level results day

Applicant type	Status	2010	2011	2012	2013	2014	2015	2016	2017	2018	2019
Main scheme	Placed (Adjustment)	0	0	0	0	0	0	0	10	0	10

AB.11 Main scheme applicants placed to nursing through adjustment: 4 days after A level results day

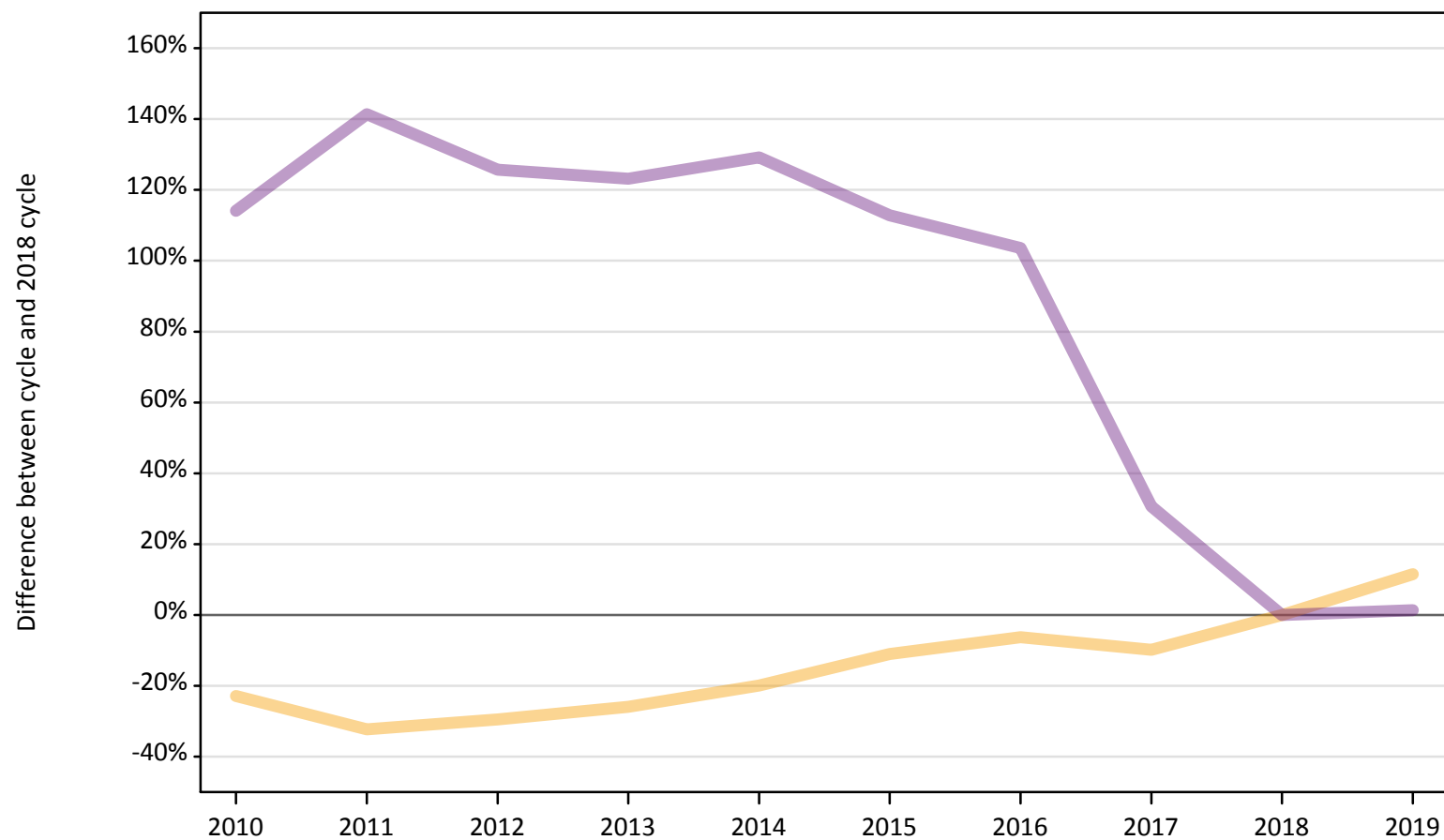
Placed through adjustment: difference between cycle and 2018 cycle

[This table is not part of this report]

AB.12 Main scheme applicants to nursing not currently placed from the UK: 4 days after A level results day

Applicants in unplaced states: difference between cycle and 2018 cycle

— Holding offer
— Free to be placed in Clearing



Note: The percentage change is not plotted in the above chart for groups with fewer than 30 unplaced applicants in any one cycle.

AB.13 Main scheme applicants to nursing not currently placed from the UK: 4 days after A level results day

Applicants in unplaced states: applicants at 4 days after A level results day

Applicant type	Status	2010	2011	2012	2013	2014	2015	2016	2017	2018	2019
Main scheme	Holding offer	4,740	4,170	4,330	4,550	4,920	5,470	5,760	5,540	6,150	6,860
	Free to be placed in Clearing	28,700	32,360	30,250	29,920	30,720	28,520	27,290	17,510	13,400	13,580

AB.14 Main scheme applicants to nursing not currently placed from the UK: 4 days after A level results day

Applicants in unplaced states: difference between cycle and 2018 cycle

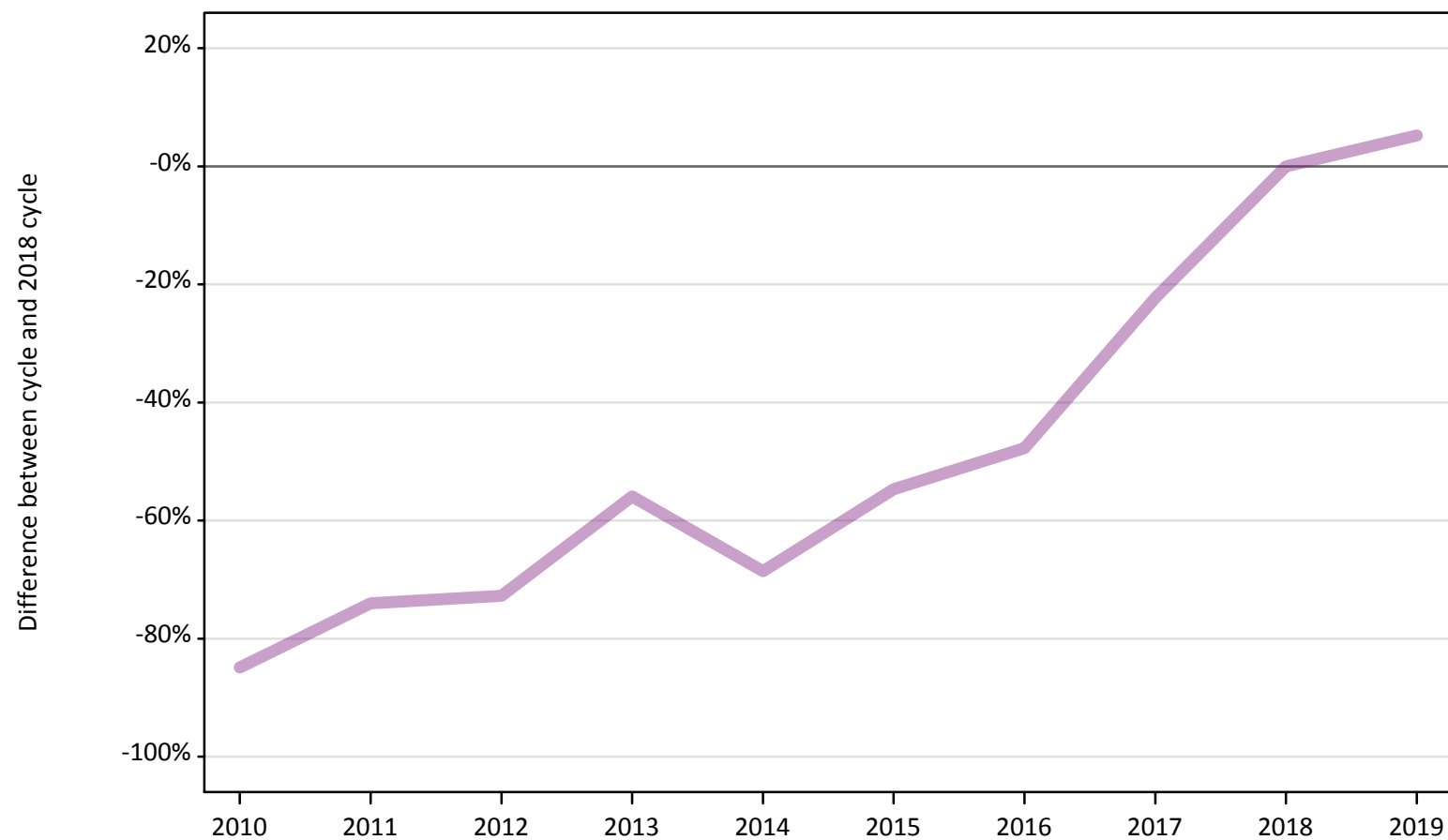
Applicant type	Status	2010	2011	2012	2013	2014	2015	2016	2017	2018	2019
Main scheme	Holding offer	-23%	-32%	-30%	-26%	-20%	-11%	-6%	-10%	0%	12%
	Free to be placed in Clearing	114%	141%	126%	123%	129%	113%	104%	31%	0%	1%

Note: The percentage change is not recorded in the above table for groups with fewer than 10 unplaced applicants in that cycle or in the 2018 cycle.

AB.15 Direct to Clearing applicants from the UK: 4 days after A level results day

Direct to Clearing: difference between cycle and 2018 cycle

- Placed (Direct to Clearing)
- Other (Direct to Clearing)



Note: The percentage change is not plotted in the above chart for groups with fewer than 30 placed applicants in any one cycle.

AB.16 Direct to Clearing applicants from the UK: 4 days after A level results day

Direct to Clearing 4 days after A level results day

Applicant type	Status	2010	2011	2012	2013	2014	2015	2016	2017	2018	2019
Direct to Clearing	Placed (Direct to Clearing)	30	20	40	50	20	40	70	120	170	170
	Other (Direct to Clearing)	60	110	110	180	130	180	210	310	400	430

AB.17 Direct to Clearing applicants from the UK: 4 days after A level results day

Direct to Clearing: difference between cycle and 2018 cycle

Applicant type	Status	2010	2011	2012	2013	2014	2015	2016	2017	2018	2019
Direct to Clearing	Placed (Direct to Clearing)	-83%	-87%	-78%	-72%	-86%	-75%	-61%	-29%	0%	-3%
	Other (Direct to Clearing)	-85%	-74%	-73%	-56%	-69%	-55%	-48%	-22%	0%	5%

Note: The percentage change is not recorded in the above table for groups with fewer than 10 placed applicants in that cycle or in the 2018 cycle.