

B7 Nursing analysis at 00:05 on Monday 19 August 2019 (4 days after A level results day)

CB.1 Placed applicants to nursing by country of domicile and age group, 2019 cycle (4 days after A level results day)

Domicile of applicant	Age group				
	17 and under	18	19	20 to 24	25 and over
England	0	4,470	2,020	3,730	6,920
Northern Ireland	0	320	170	230	260
Scotland	20	650	330	730	1,440
Wales	0	310	210	360	640
UK	30	5,750	2,730	5,040	9,250

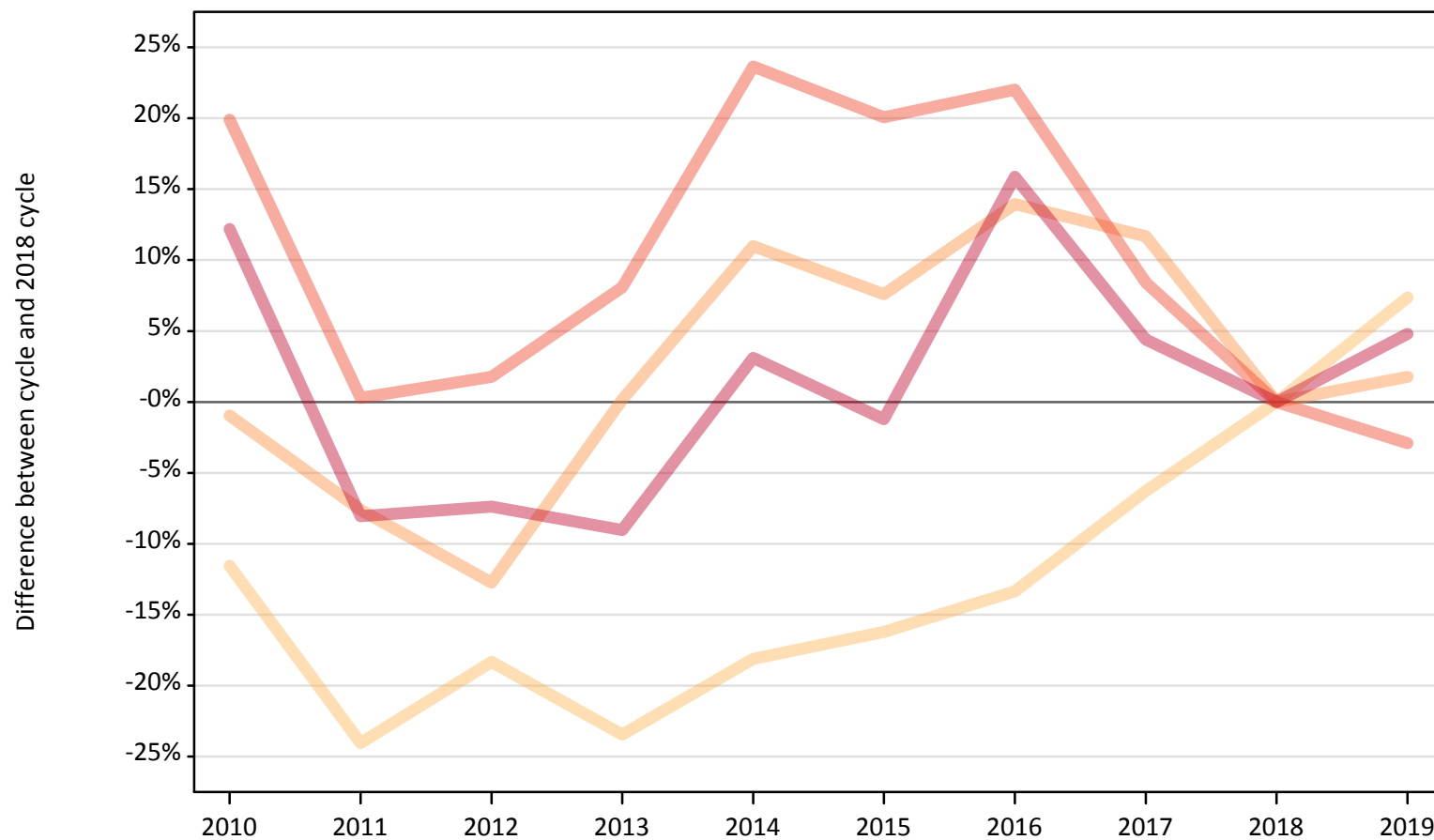
CB.2 Proportion of 18 year old population placed to nursing by country of domicile, 2019 cycle (4 days after A level results day)

Domicile of applicant	Age group	2019
England	18	0.7%
Northern Ireland	18	1.4%
Scotland	18	1.2%
Wales	18	0.9%

CB.3 Placed applicants to nursing from England by age group at 4 days after A level results day

Selected age groups: difference between cycle and 2018 cycle

- 17 and under
- 18
- 19
- 20 to 24
- 25 and over



Note: The percentage change is not plotted in the above chart for groups with fewer than 30 placed applicants in any one cycle.

CB.4 Placed applicants to nursing from England by age group at 4 days after A level results day

All age groups

Domicile of applicant	Age group	2010	2011	2012	2013	2014	2015	2016	2017	2018	2019
England	17 and under	70	20	0	0	10	0	0	10	0	0
	18	3,680	3,160	3,400	3,190	3,410	3,490	3,610	3,900	4,160	4,470
	19	1,970	1,840	1,730	1,990	2,200	2,140	2,260	2,220	1,990	2,020
	20 to 24	4,600	3,850	3,910	4,150	4,750	4,610	4,680	4,160	3,840	3,730
	25 and over	7,400	6,070	6,110	6,000	6,800	6,520	7,650	6,890	6,600	6,920

CB.5 Placed applicants to nursing from England by age group at 4 days after A level results day

Selected age groups: difference between cycle and 2018 cycle

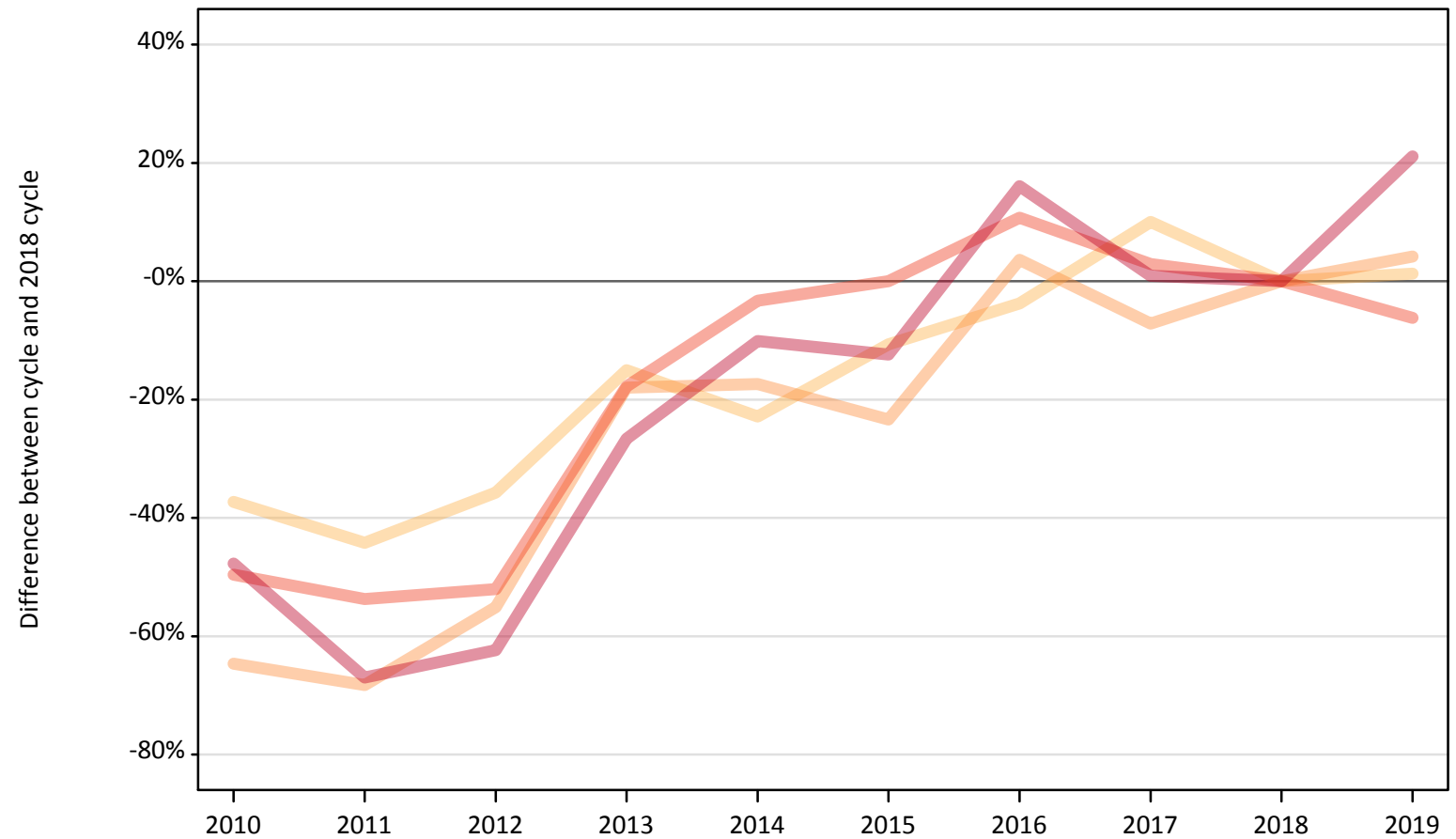
Domicile of applicant	Age group	2010	2011	2012	2013	2014	2015	2016	2017	2018	2019
England	17 and under										
	18	-12%	-24%	-18%	-23%	-18%	-16%	-13%	-6%	0%	7%
	19	-1%	-8%	-13%	0%	11%	8%	14%	12%	0%	2%
	20 to 24	20%	0%	2%	8%	24%	20%	22%	8%	0%	-3%
	25 and over	12%	-8%	-7%	-9%	3%	-1%	16%	4%	0%	5%

Note: The percentage change is not recorded in the above table for groups with fewer than 10 placed applicants in that cycle or in the 2018 cycle.

CB.6 Placed applicants to nursing from Northern Ireland by age group at 4 days after A level results day

Selected age groups: difference between cycle and 2018 cycle

- 17 and under
- 18
- 19
- 20 to 24
- 25 and over



Note: The percentage change is not plotted in the above chart for groups with fewer than 30 placed applicants in any one cycle.

CB.7 Placed applicants to nursing from Northern Ireland by age group at 4 days after A level results day

All age groups

Domicile of applicant	Age group	2010	2011	2012	2013	2014	2015	2016	2017	2018	2019
Northern Ireland	17 and under	0	0	0	0	0	0	0	0	0	0
	18	200	180	210	270	250	290	310	350	320	320
	19	60	50	80	140	140	130	170	160	170	170
	20 to 24	120	110	120	200	230	240	270	250	240	230
	25 and over	110	70	80	160	200	190	250	220	220	260

CB.8 Placed applicants to nursing from Northern Ireland by age group at 4 days after A level results day

Selected age groups: difference between cycle and 2018 cycle

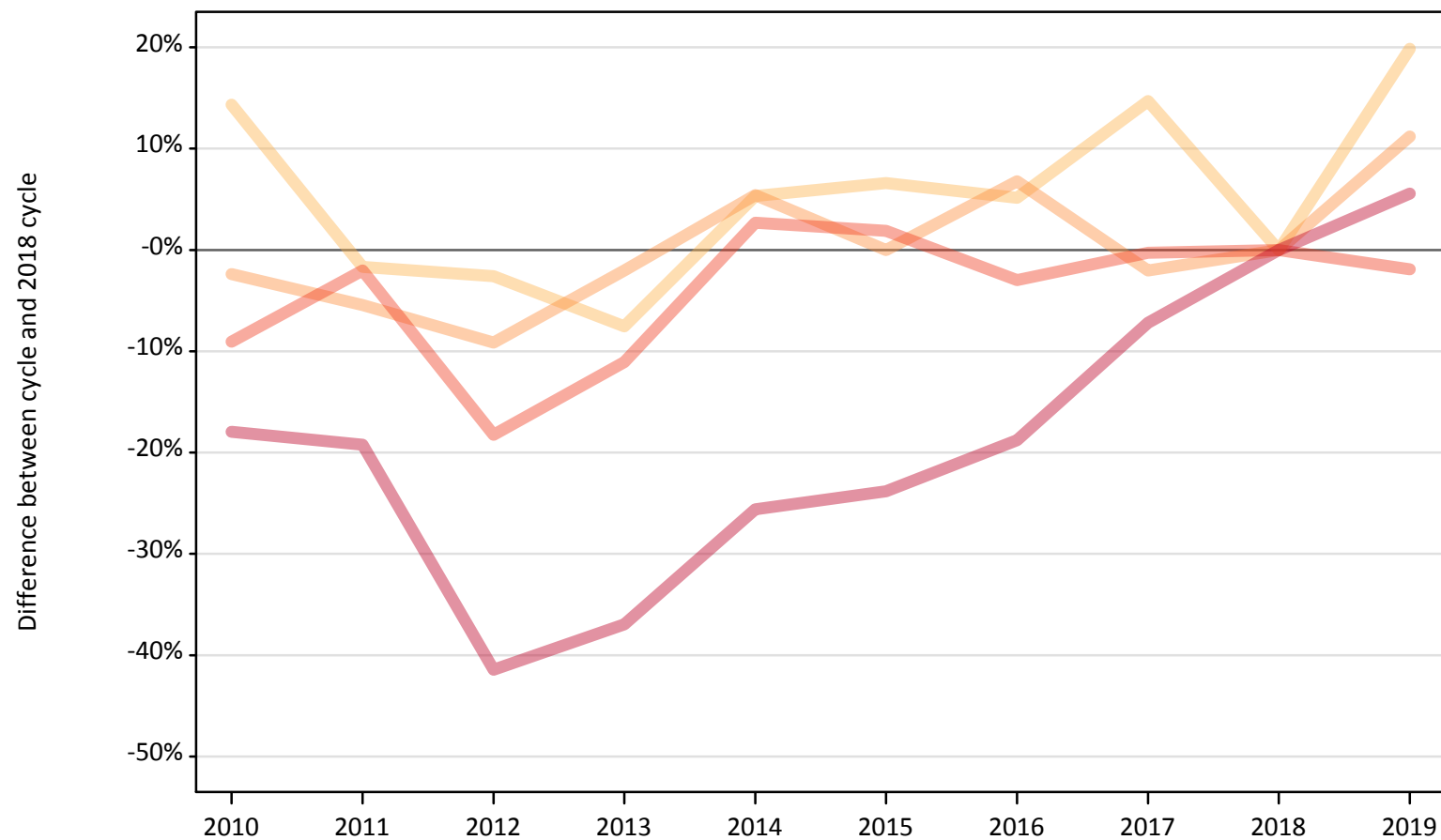
Domicile of applicant	Age group	2010	2011	2012	2013	2014	2015	2016	2017	2018	2019
Northern Ireland	17 and under										
	18	-37%	-44%	-36%	-15%	-23%	-11%	-4%	10%	0%	1%
	19	-65%	-68%	-55%	-18%	-17%	-23%	4%	-7%	0%	4%
	20 to 24	-50%	-54%	-52%	-18%	-3%	0%	11%	3%	0%	-6%
	25 and over	-48%	-67%	-62%	-27%	-10%	-12%	16%	1%	0%	21%

Note: The percentage change is not recorded in the above table for groups with fewer than 10 placed applicants in that cycle or in the 2018 cycle.

CB.9 Placed applicants to nursing from Scotland by age group at 4 days after A level results day

Selected age groups: difference between cycle and 2018 cycle

- 17 and under
- 18
- 19
- 20 to 24
- 25 and over



Note: The percentage change is not plotted in the above chart for groups with fewer than 30 placed applicants in any one cycle.

CB.10 Placed applicants to nursing from Scotland by age group at 4 days after A level results day

All age groups

Domicile of applicant	Age group	2010	2011	2012	2013	2014	2015	2016	2017	2018	2019
Scotland	17 and under	40	20	20	20	20	10	20	20	10	20
	18	620	540	530	500	570	580	570	620	540	650
	19	290	280	270	290	310	300	320	290	300	330
	20 to 24	670	730	610	660	760	750	720	740	740	730
	25 and over	1,120	1,100	800	860	1,020	1,040	1,110	1,270	1,360	1,440

CB.11 Placed applicants to nursing from Scotland by age group at 4 days after A level results day

Selected age groups: difference between cycle and 2018 cycle

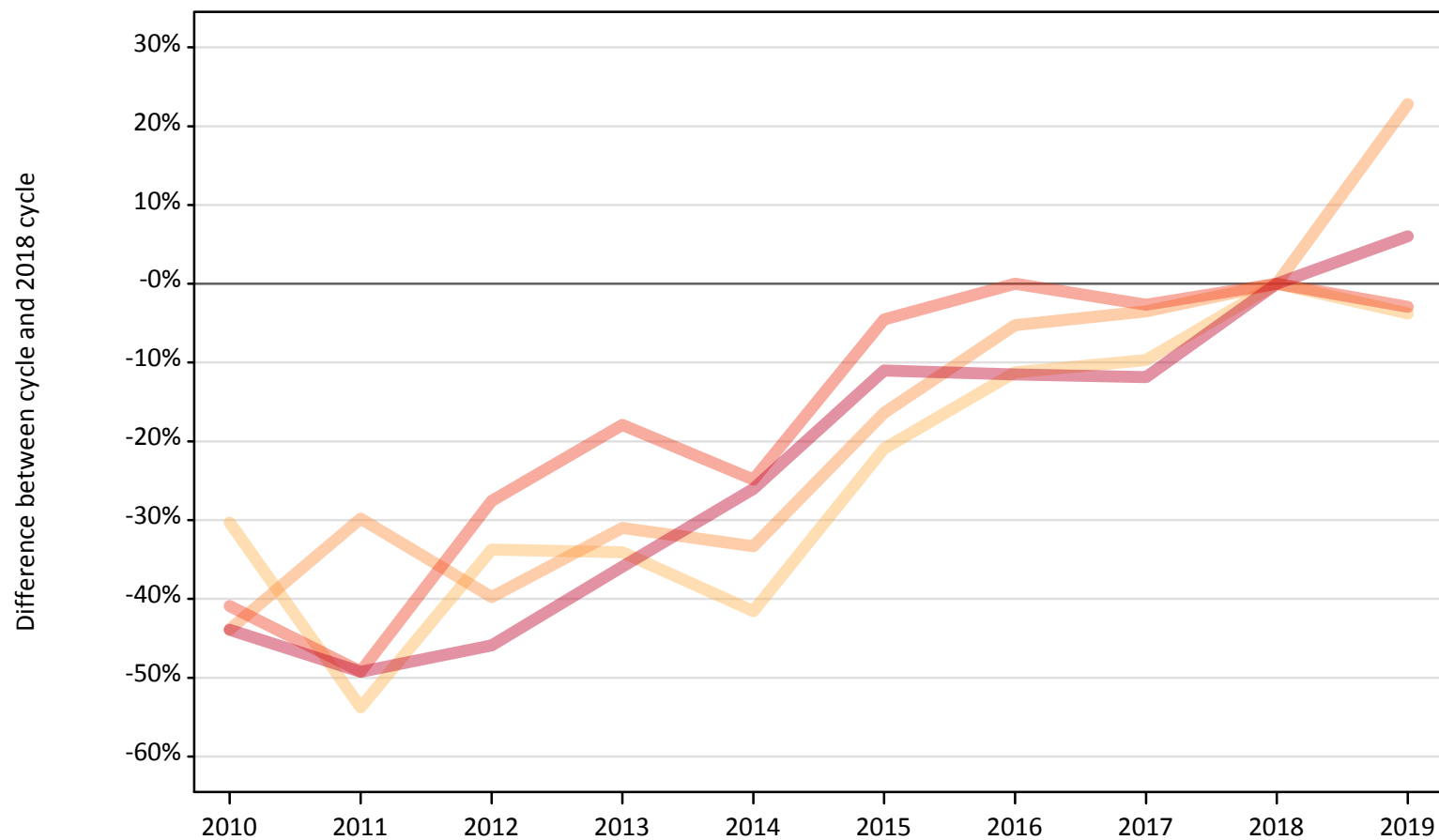
Domicile of applicant	Age group	2010	2011	2012	2013	2014	2015	2016	2017	2018	2019
Scotland	17 and under	179%	64%	43%	36%	21%	-14%	14%	36%	0%	43%
	18	14%	-2%	-3%	-8%	5%	7%	5%	15%	0%	20%
	19	-2%	-5%	-9%	-2%	5%	0%	7%	-2%	0%	11%
	20 to 24	-9%	-2%	-18%	-11%	3%	2%	-3%	-0%	0%	-2%
	25 and over	-18%	-19%	-41%	-37%	-26%	-24%	-19%	-7%	0%	6%

Note: The percentage change is not recorded in the above table for groups with fewer than 10 placed applicants in that cycle or in the 2018 cycle.

CB.12 Placed applicants to nursing from Wales by age group at 4 days after A level results day

Selected age groups: difference between cycle and 2018 cycle

- 17 and under
- 18
- 19
- 20 to 24
- 25 and over



Note: The percentage change is not plotted in the above chart for groups with fewer than 30 placed applicants in any one cycle.

CB.13 Placed applicants to nursing from Wales by age group at 4 days after A level results day

All age groups

Domicile of applicant	Age group	2010	2011	2012	2013	2014	2015	2016	2017	2018	2019
Wales	17 and under	0	0	0	0	0	0	0	0	0	0
	18	220	150	210	210	190	250	280	290	320	310
	19	100	120	100	120	110	140	160	170	170	210
	20 to 24	220	190	270	310	280	360	370	360	370	360
	25 and over	340	300	320	380	440	530	530	530	600	640

CB.14 Placed applicants to nursing from Wales by age group at 4 days after A level results day

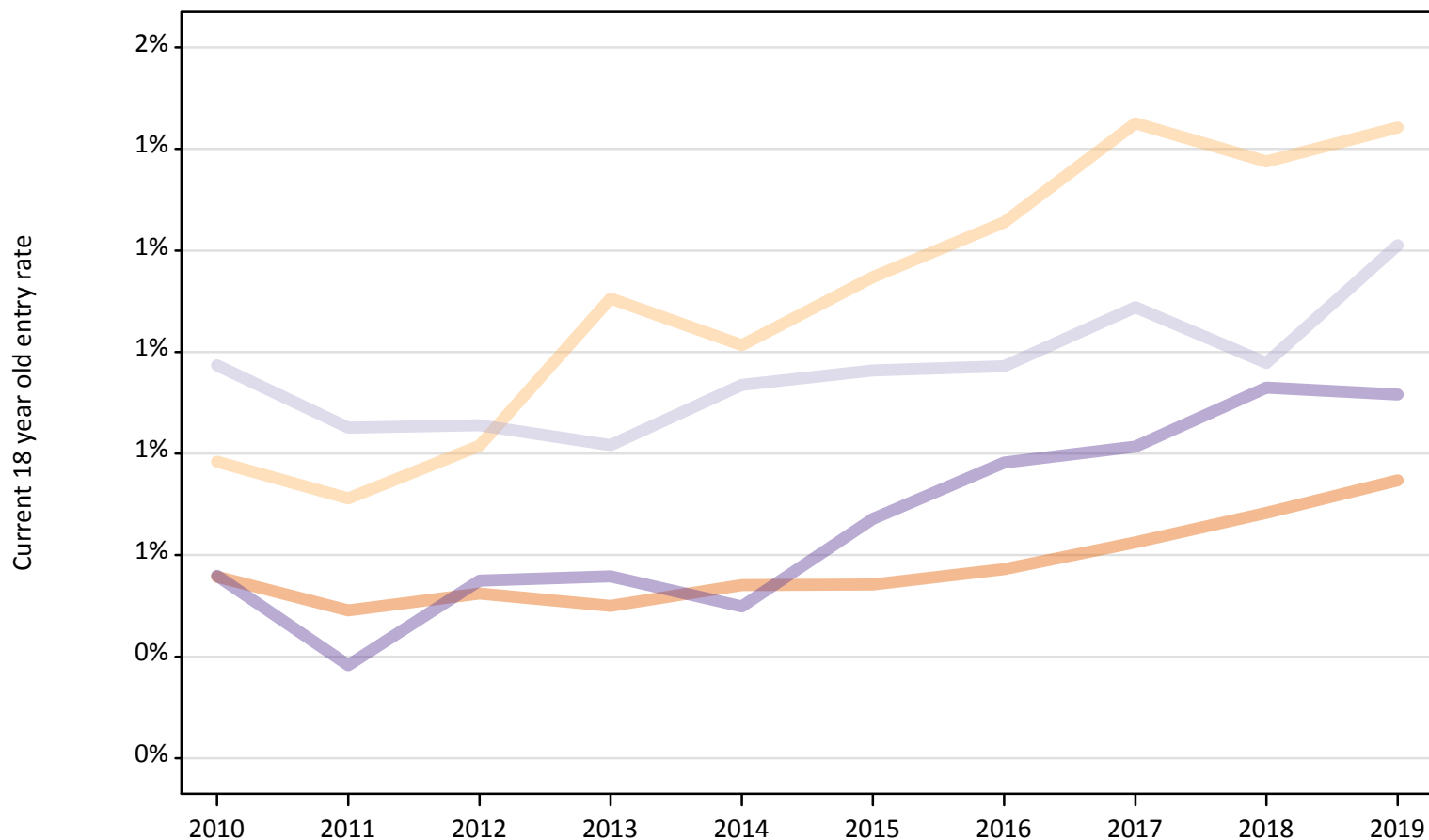
Selected age groups: difference between cycle and 2018 cycle

Domicile of applicant	Age group	2010	2011	2012	2013	2014	2015	2016	2017	2018	2019
Wales	17 and under										
	18	-30%	-54%	-34%	-34%	-42%	-21%	-11%	-10%	0%	-4%
	19	-44%	-30%	-40%	-31%	-33%	-16%	-5%	-4%	0%	23%
	20 to 24	-41%	-49%	-28%	-18%	-25%	-5%	0%	-3%	0%	-3%
	25 and over	-44%	-49%	-46%	-36%	-26%	-11%	-12%	-12%	0%	6%

Note: The percentage change is not recorded in the above table for groups with fewer than 10 placed applicants in that cycle or in the 2018 cycle.

CB.15 Entry rates to nursing for 18 year olds by UK country of domicile: 4 days after A level results day

Placed 18 year old applicants as a proportion of the 18 year old population



CB.16 Entry rates to nursing for 18 year olds by UK country of domicile: 4 days after A level results day

Placed 18 year old applicants as a proportion of the 18 year old population

Domicile of applicant	Age group	2010	2011	2012	2013	2014	2015	2016	2017	2018	2019
England	18	0.6%	0.5%	0.5%	0.5%	0.5%	0.5%	0.6%	0.6%	0.7%	0.7%
Northern Ireland	18	0.8%	0.7%	0.8%	1.1%	1.0%	1.1%	1.3%	1.5%	1.4%	1.4%
Scotland	18	1.0%	0.9%	0.9%	0.8%	0.9%	1.0%	1.0%	1.1%	1.0%	1.2%
Wales	18	0.6%	0.4%	0.5%	0.6%	0.5%	0.7%	0.8%	0.8%	0.9%	0.9%