

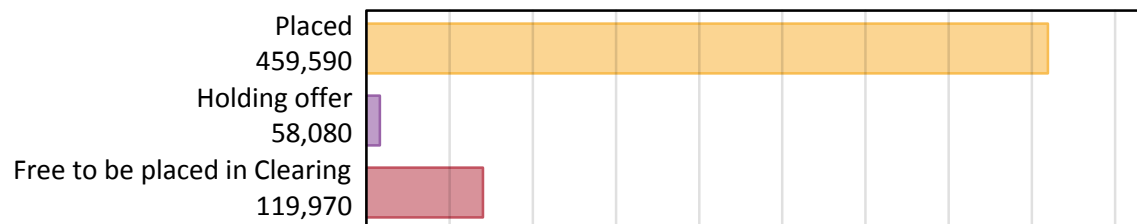
# Daily Clearing Analysis: Overview

Analysis at 00:05 on Tuesday 20 August 2019 (5 days after A level results day)

## A.1 Applicants by type and status from all domiciles, 2019 cycle

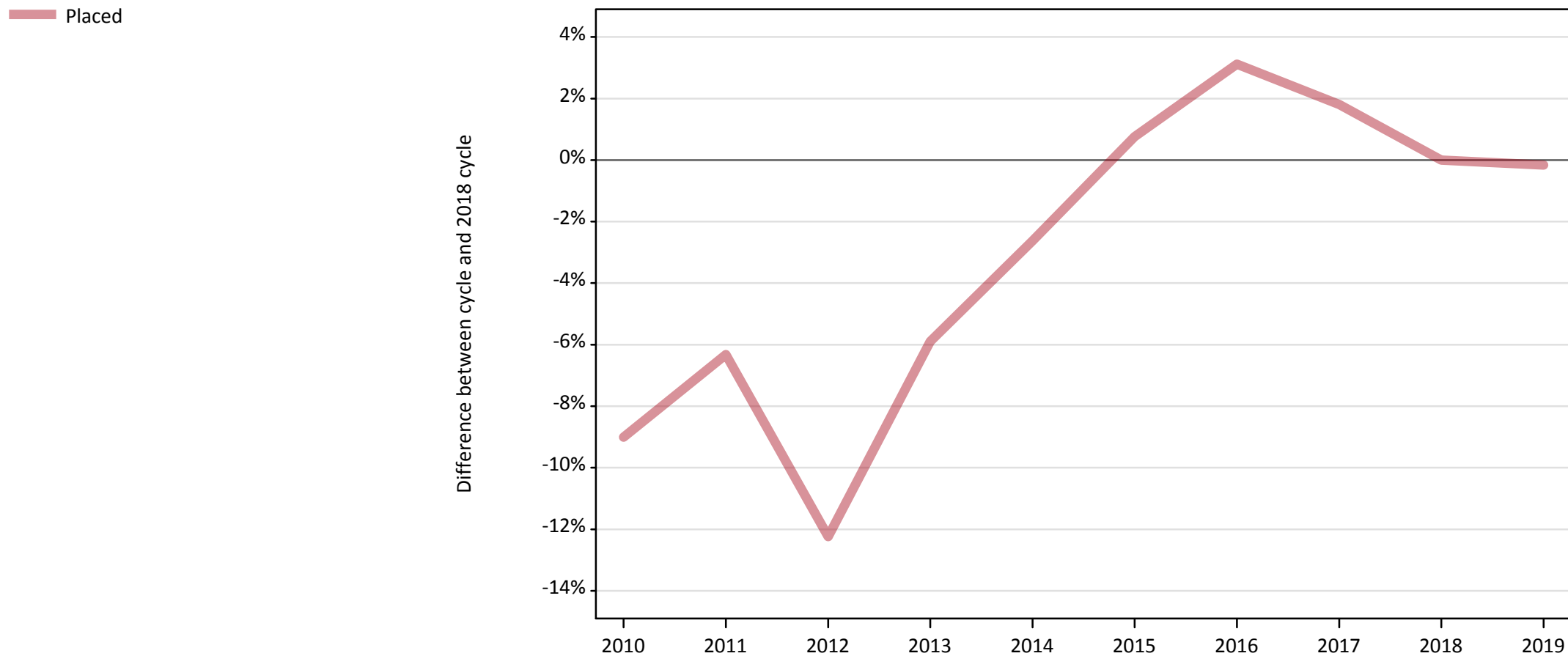
Applicant type	Status	2019
Main scheme	Placed (Clearing)	36,630
	Placed (Adjustment)	600
	Placed (Firm)	369,380
	Placed (Insurance)	32,540
	Placed (Other)	12,980
	Holding offer	58,080
	Free to be placed in Clearing	119,970
Direct to Clearing	Placed (Direct to Clearing)	7,460
	Other (Direct to Clearing)	9,220
All applicants	Placed	459,590

## A.2 Summary of applicants who are placed, holding offers or free to be placed in Clearing ( all domiciles )



### A.3 All placed applicants from all domiciles: 5 days after A level results day

All placed applicants: difference between cycle and 2018 cycle



Note: The percentage change is not plotted in the above chart for groups with fewer than 30 placed applicants in any one cycle.

#### A.4 All placed applicants from all domiciles: 5 days after A level results day

All placed applicants: applicants at 5 days after A level results day

Applicant type	Status	2010	2011	2012	2013	2014	2015	2016	2017	2018	2019
All applicants	Placed	418,890	431,250	404,000	433,220	448,280	463,850	474,710	468,670	460,340	459,590

#### A.5 All placed applicants from all domiciles: 5 days after A level results day

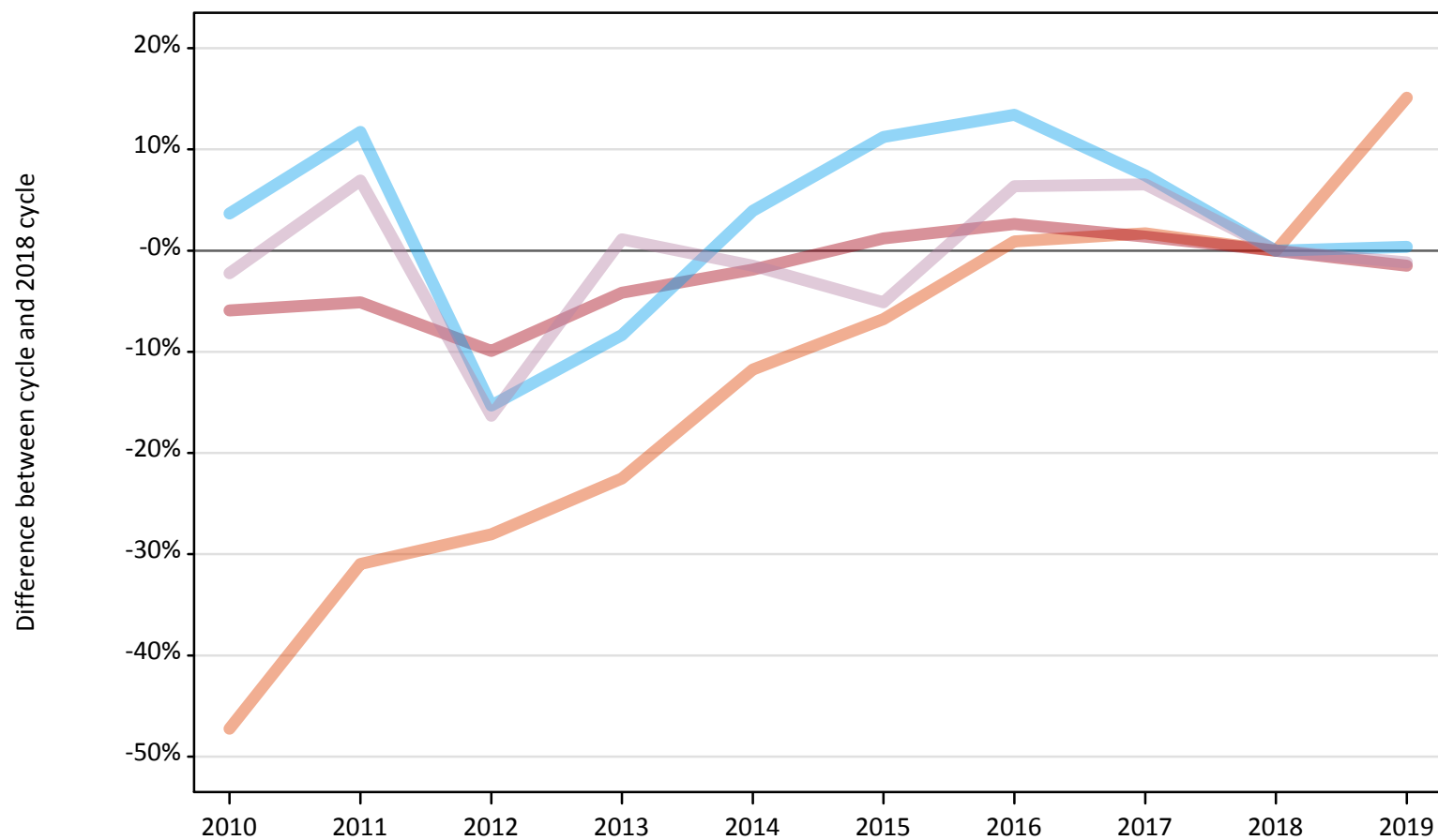
All placed applicants: difference between cycle and 2018 cycle

Applicant type	Status	2010	2011	2012	2013	2014	2015	2016	2017	2018	2019
All applicants	Placed	-9%	-6%	-12%	-6%	-3%	1%	3%	2%	0%	-0%

Note: The percentage change is not recorded in the above table for groups with fewer than 10 placed applicants in that cycle or in the 2018 cycle.

**A.6 Placed main scheme applicants from all domiciles: 5 days after A level results day**  
All Main scheme placed routes (excluding Adjustment): difference between cycle and 2018 cycle

- Placed (Clearing)
- Placed (Firm)
- Placed (Insurance)
- Placed (Other)



Note: The percentage change is not plotted in the above chart for groups with fewer than 30 placed applicants in any one cycle.

### A.7 Placed main scheme applicants from all domiciles: 5 days after A level results day

All Main scheme placed routes (excluding Adjustment): applicants at 5 days after A level results day

Applicant type	Status	2010	2011	2012	2013	2014	2015	2016	2017	2018	2019
Main scheme	Placed (Clearing)	16,790	21,970	22,900	24,660	28,080	29,670	32,110	32,370	31,820	36,630
	Placed (Firm)	352,790	355,760	337,800	359,350	367,940	379,490	384,820	380,120	374,940	369,380
	Placed (Insurance)	33,600	36,220	27,460	29,720	33,690	36,060	36,770	34,830	32,420	32,540
	Placed (Other)	12,840	14,050	10,990	13,280	12,940	12,460	13,970	14,000	13,140	12,980

### A.8 Placed main scheme applicants from all domiciles: 5 days after A level results day

All Main scheme placed routes (excluding Adjustment): difference between cycle and 2018 cycle

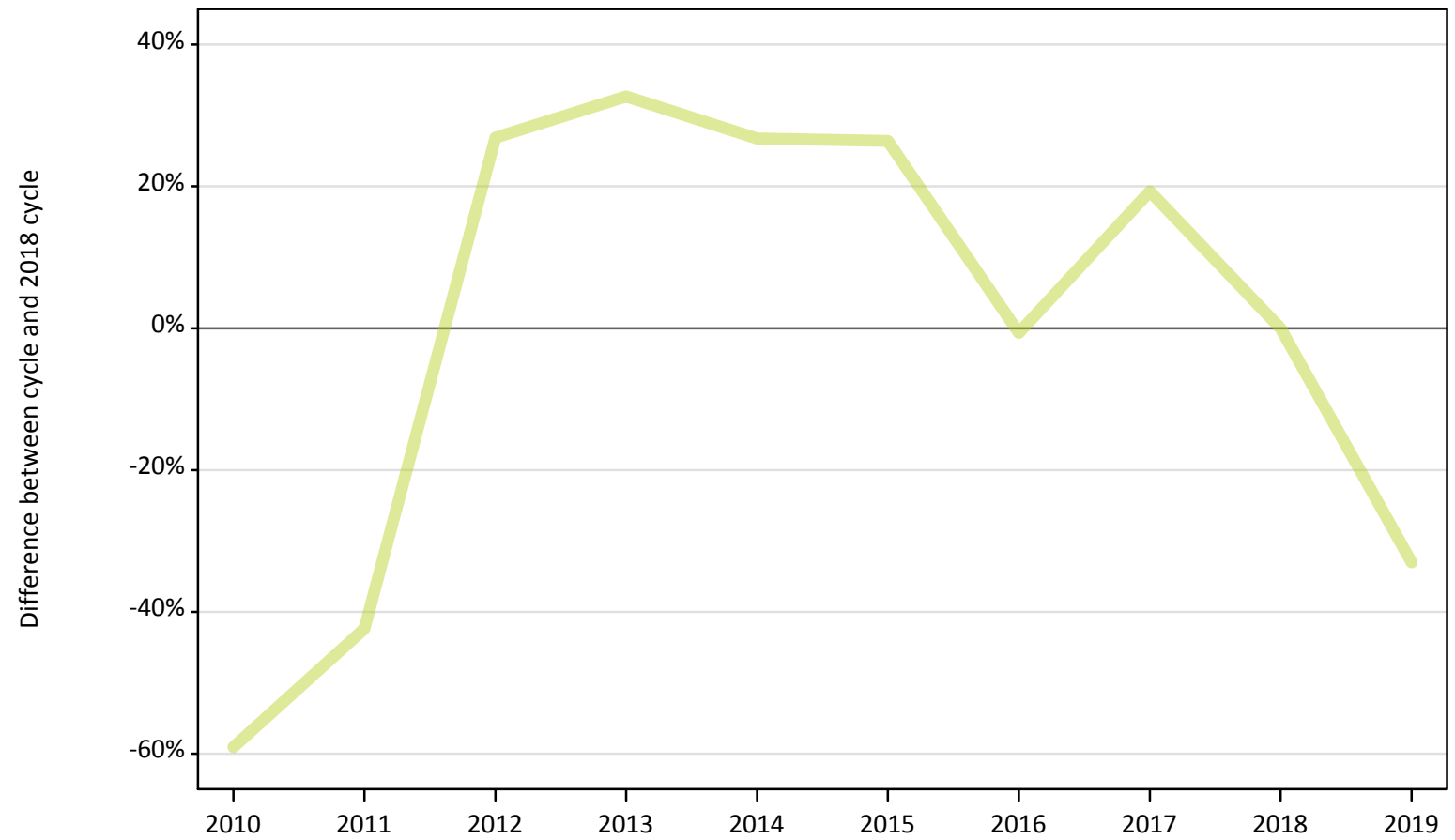
Applicant type	Status	2010	2011	2012	2013	2014	2015	2016	2017	2018	2019
Main scheme	Placed (Clearing)	-47%	-31%	-28%	-23%	-12%	-7%	1%	2%	0%	15%
	Placed (Firm)	-6%	-5%	-10%	-4%	-2%	1%	3%	1%	0%	-1%
	Placed (Insurance)	4%	12%	-15%	-8%	4%	11%	13%	7%	0%	0%
	Placed (Other)	-2%	7%	-16%	1%	-1%	-5%	6%	7%	0%	-1%

Note: The percentage change is not recorded in the above table for groups with fewer than 10 placed applicants in that cycle or in the 2018 cycle.

### A.9 Main scheme applicants placed through adjustment: 5 days after A level results day

Placed through adjustment: difference between cycle and 2018 cycle

Placed (Adjustment)



Note: The percentage change is not plotted in the above chart for groups with fewer than 30 placed applicants in any one cycle.

### A.10 Main scheme applicants placed through adjustment: 5 days after A level results day

Placed through adjustment: applicants at 5 days after A level results day

Applicant type	Status	2010	2011	2012	2013	2014	2015	2016	2017	2018	2019
Main scheme	Placed (Adjustment)	370	520	1,140	1,190	1,140	1,130	890	1,070	900	600

### A.11 Main scheme applicants placed through adjustment: 5 days after A level results day

Placed through adjustment: difference between cycle and 2018 cycle

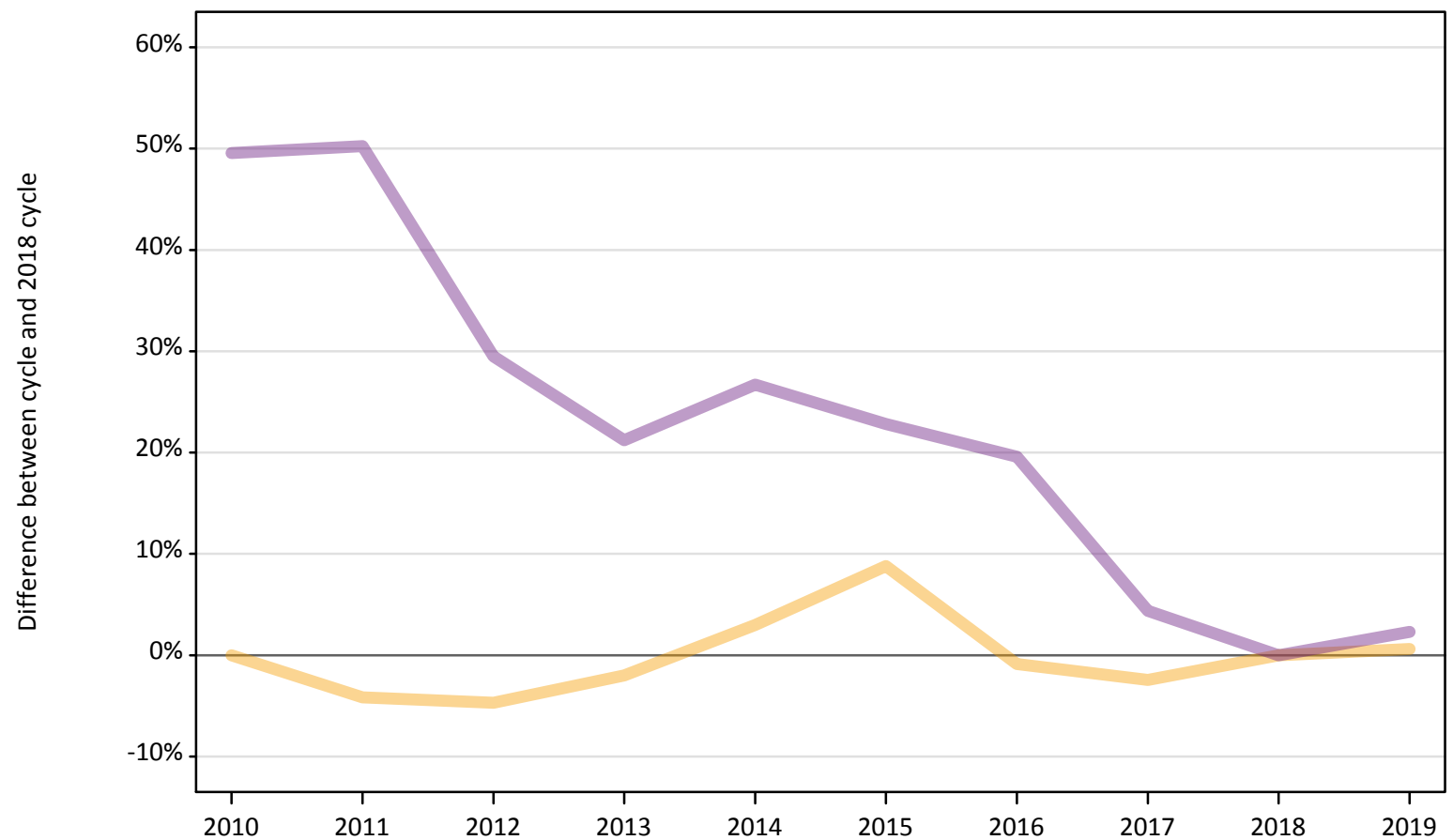
Applicant type	Status	2010	2011	2012	2013	2014	2015	2016	2017	2018	2019
Main scheme	Placed (Adjustment)	-59%	-42%	27%	33%	27%	26%	-1%	19%	0%	-33%

Note: The percentage change is not recorded in the above table for groups with fewer than 10 placed applicants in that cycle or in the 2018 cycle.

## A.12 Main scheme applicants not currently placed from all domiciles: 5 days after A level results day

Applicants in unplaced states: difference between cycle and 2018 cycle

— Holding offer  
— Free to be placed in Clearing



Note: The percentage change is not plotted in the above chart for groups with fewer than 30 unplaced applicants in any one cycle.



### A.13 Main scheme applicants not currently placed from all domiciles: 5 days after A level results day

Applicants in unplaced states: applicants at 5 days after A level results day

Applicant type	Status	2010	2011	2012	2013	2014	2015	2016	2017	2018	2019
Main scheme	Holding offer	57,710	55,320	55,020	56,580	59,440	62,800	57,220	56,300	57,720	58,080
	Free to be placed in Clearing	175,380	176,190	151,850	142,140	148,580	144,020	140,240	122,410	117,270	119,970

### A.14 Main scheme applicants not currently placed from all domiciles: 5 days after A level results day

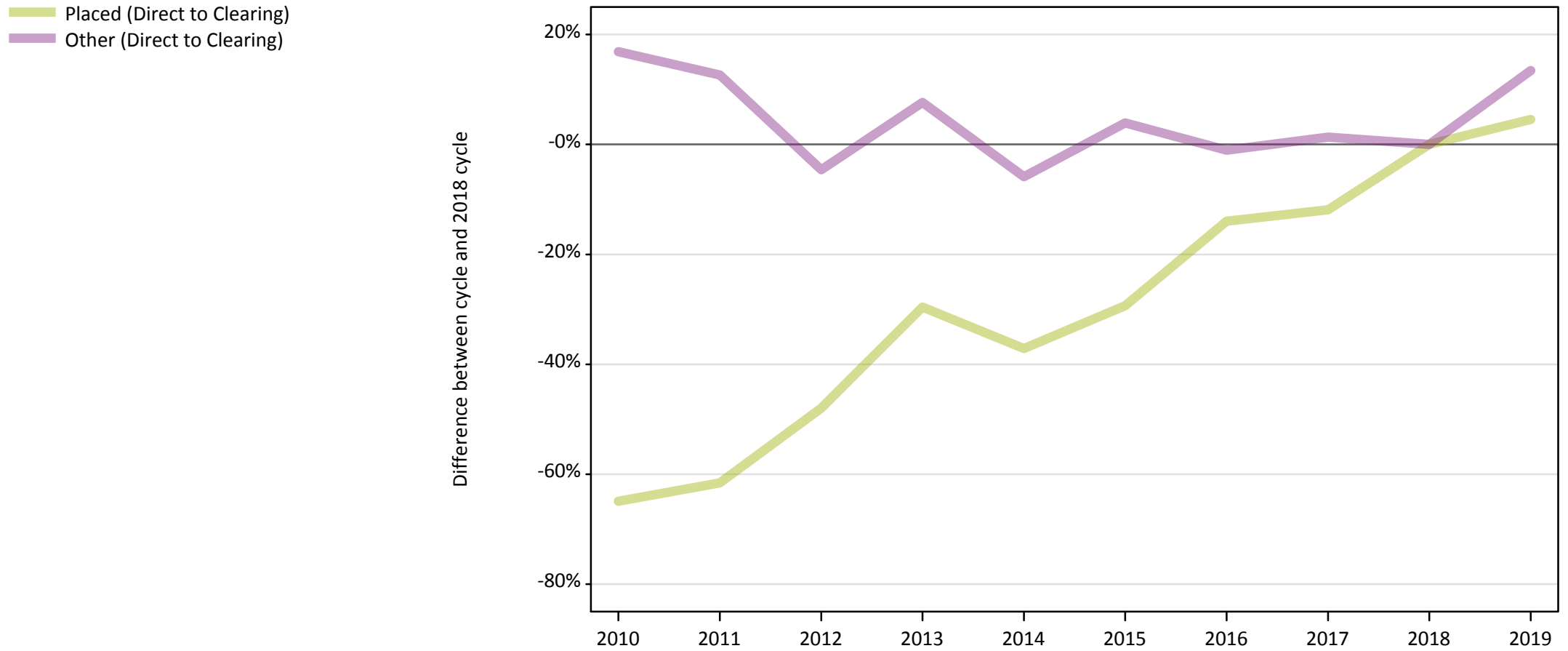
Applicants in unplaced states: difference between cycle and 2018 cycle

Applicant type	Status	2010	2011	2012	2013	2014	2015	2016	2017	2018	2019
Main scheme	Holding offer	-0%	-4%	-5%	-2%	3%	9%	-1%	-2%	0%	1%
	Free to be placed in Clearing	50%	50%	29%	21%	27%	23%	20%	4%	0%	2%

Note: The percentage change is not recorded in the above table for groups with fewer than 10 unplaced applicants in that cycle or in the 2018 cycle.

### A.15 Direct to Clearing applicants from all domiciles: 5 days after A level results day

Direct to Clearing: difference between cycle and 2018 cycle



Note: The percentage change is not plotted in the above chart for groups with fewer than 30 placed applicants in any one cycle.

### A.16 Direct to Clearing applicants from all domiciles: 5 days after A level results day

Direct to Clearing 5 days after A level results day

Applicant type	Status	2010	2011	2012	2013	2014	2015	2016	2017	2018	2019
Direct to Clearing	Placed (Direct to Clearing)	2,500	2,740	3,710	5,020	4,480	5,040	6,140	6,290	7,130	7,460
	Other (Direct to Clearing)	9,500	9,160	7,750	8,750	7,650	8,450	8,040	8,240	8,130	9,220

### A.17 Direct to Clearing applicants from all domiciles: 5 days after A level results day

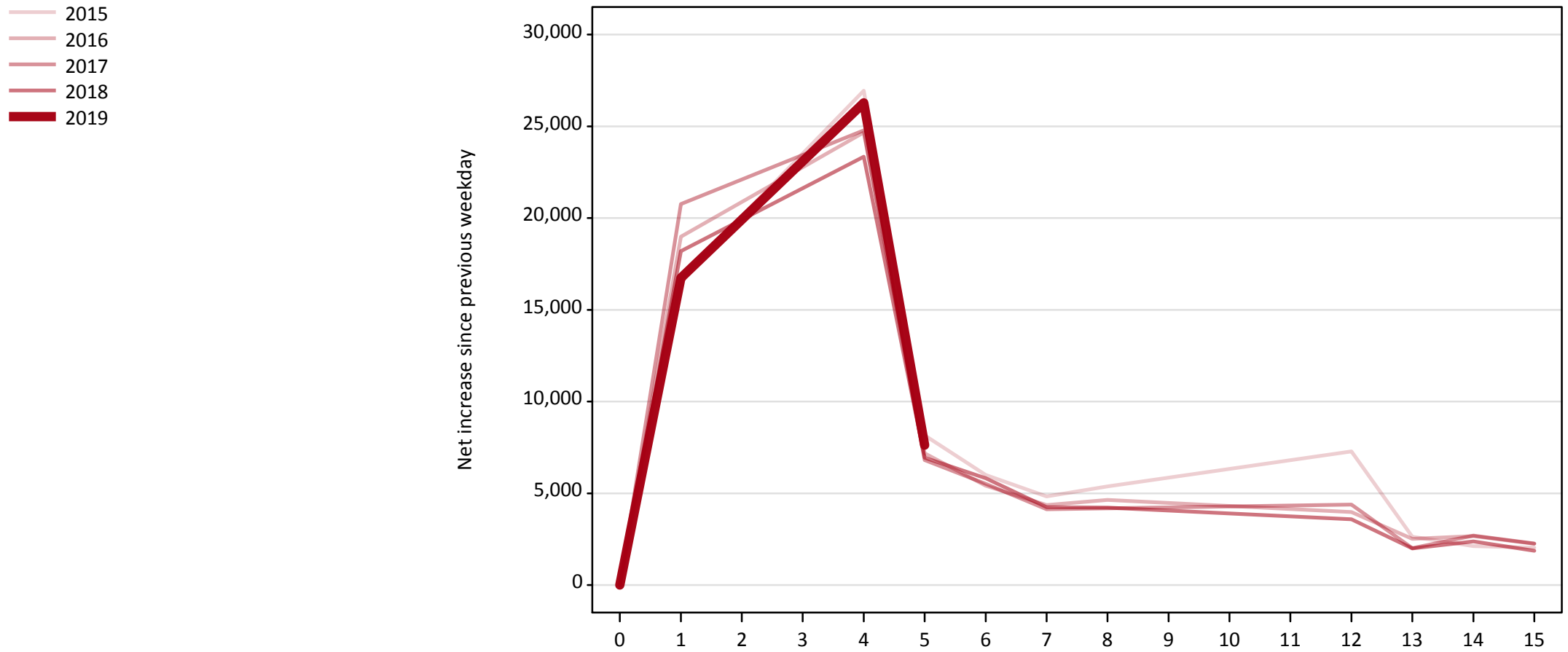
Direct to Clearing: difference between cycle and 2018 cycle

Applicant type	Status	2010	2011	2012	2013	2014	2015	2016	2017	2018	2019
Direct to Clearing	Placed (Direct to Clearing)	-65%	-62%	-48%	-30%	-37%	-29%	-14%	-12%	0%	5%
	Other (Direct to Clearing)	17%	13%	-5%	8%	-6%	4%	-1%	1%	0%	13%

Note: The percentage change is not recorded in the above table for groups with fewer than 10 placed applicants in that cycle or in the 2018 cycle.

### A.18 All Placed: Daily net change (from all domiciles)

Net increase since previous weekday (2019 cycle up to 5 days after A level results day)

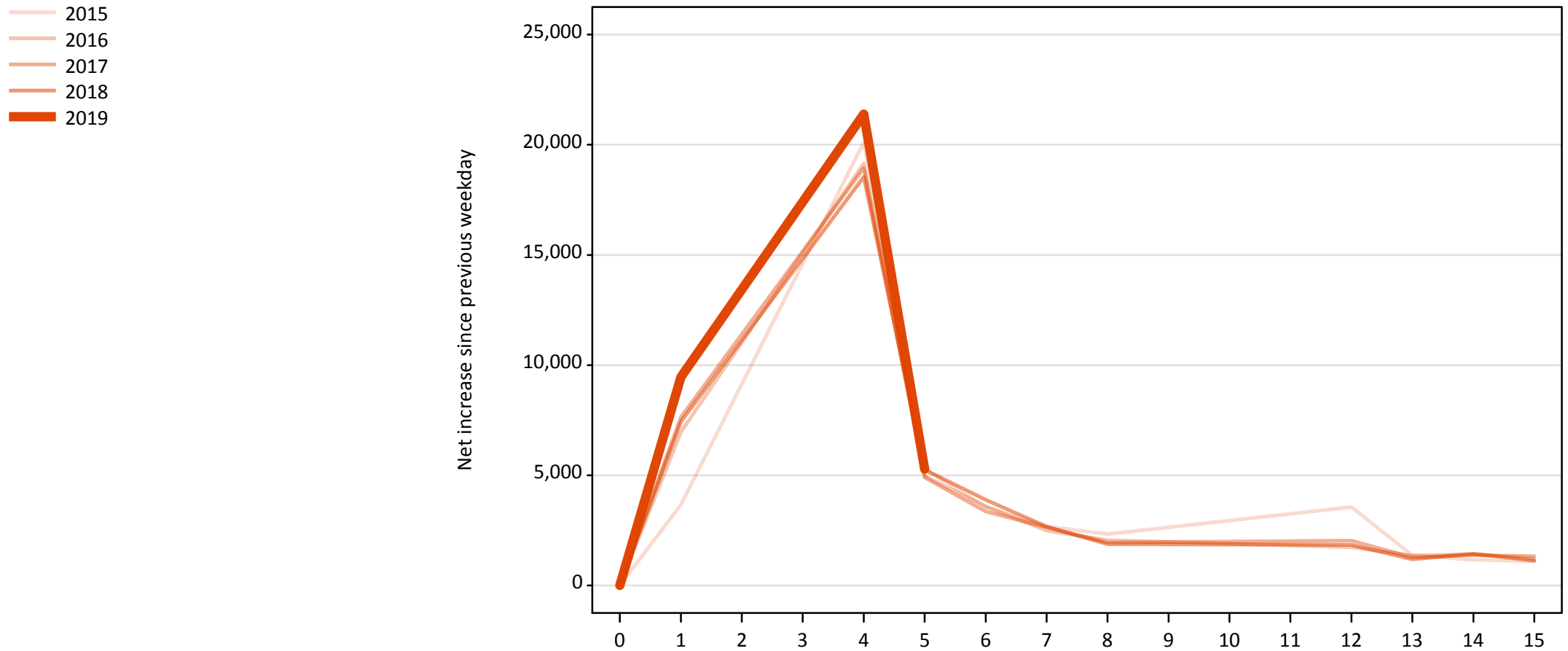


**A.19 All Placed: Daily net change (from all domiciles)**

Net increase since previous weekday (2019 cycle up to 5 days after A level results day)

Applicant status, days since A level results day		2015	2016	2017	2018	2019
All Placed	0	0	0	0	0	0
	1	16,680	18,990	20,770	18,200	16,740
	4	26,940	24,670	24,790	23,340	26,280
	5	8,160	7,170	6,810	6,940	7,620
	6	6,000	5,410	5,510	5,820	
	7	4,830	4,350	4,140	4,240	
	8	5,370	4,640	4,190	4,220	
	12	7,280	3,980	4,380	3,590	
	13	2,630	2,510	2,010	2,000	
	14	2,120	2,660	2,700	2,370	
	15	2,030	2,250	2,260	1,870	

**A.20 Placed through Clearing only: Daily net change (from all domiciles)**  
Net increase since previous weekday (2019 cycle up to 5 days after A level results day)



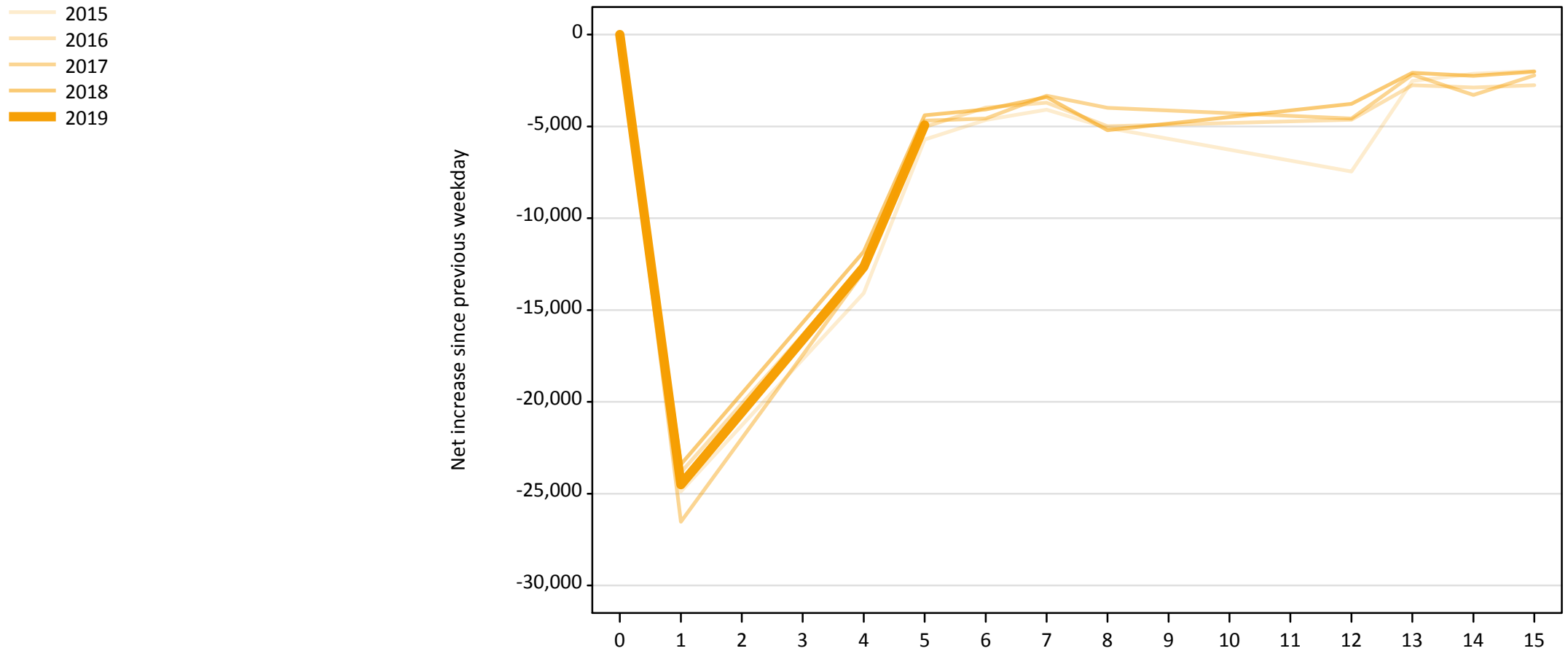
**A.21 Placed through Clearing only: Daily net change (from all domiciles)**

Net increase since previous weekday (2019 cycle up to 5 days after A level results day)

Applicant status, days since A level results day		2015	2016	2017	2018	2019
Placed through Clearing only	0	0	0	0	0	0
	1	3,660	6,970	7,640	7,440	9,460
	4	20,110	19,140	18,940	18,550	21,390
	5	5,290	4,960	4,910	5,250	5,280
	6	3,560	3,590	3,360	3,890	
	7	2,680	2,480	2,640	2,660	
	8	2,330	2,050	1,950	1,880	
	12	3,550	1,740	2,030	1,840	
	13	1,370	1,350	1,270	1,190	
	14	1,160	1,420	1,370	1,440	
	15	1,100	1,210	1,320	1,130	

## A.22 Holding Offer: Daily net change (from all domiciles)

Net increase since previous weekday (2019 cycle up to 5 days after A level results day)



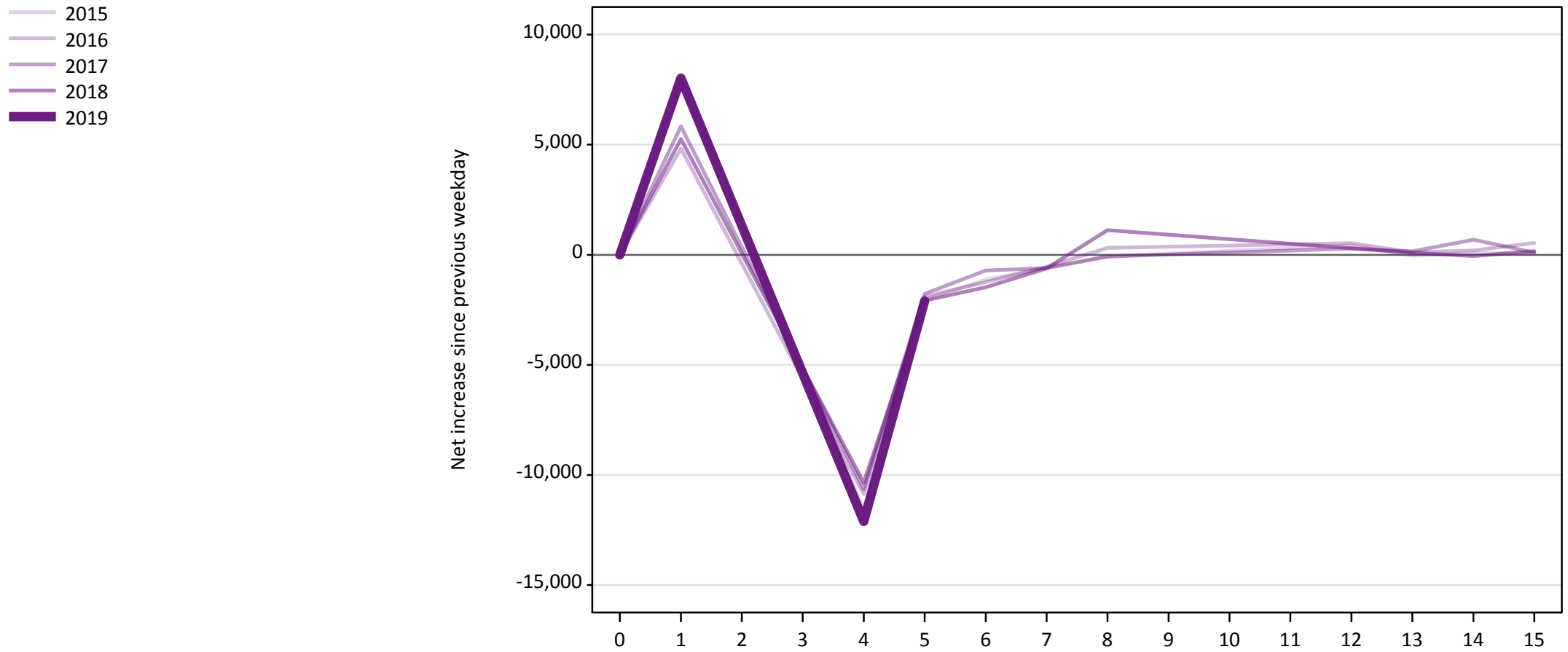


**A.23 Holding Offer: Daily net change (from all domiciles)**

Net increase since previous weekday (2019 cycle up to 5 days after A level results day)

Applicant status, days since A level results day		2015	2016	2017	2018	2019
Holding Offer	0	0	0	0	0	0
	1	-24,880	-23,840	-26,530	-23,410	-24,510
	4	-14,080	-12,600	-12,900	-11,810	-12,650
	5	-5,720	-5,030	-4,680	-4,390	-4,930
	6	-4,650	-3,970	-4,580	-4,080	
	7	-4,090	-3,700	-3,330	-3,400	
	8	-5,080	-4,990	-3,990	-5,210	
	12	-7,460	-4,640	-4,580	-3,770	
	13	-2,520	-2,760	-2,180	-2,080	
	14	-2,130	-2,880	-3,280	-2,250	
	15	-1,980	-2,760	-2,230	-2,020	

**A.24 Free to be placed in Clearing: Daily net change (from all domiciles)**  
Net increase since previous weekday (2019 cycle up to 5 days after A level results day)



**A.25 Free to be placed in Clearing: Daily net change (from all domiciles)**

Net increase since previous weekday (2019 cycle up to 5 days after A level results day)

Applicant status, days since A level results day		2015	2016	2017	2018	2019
Free to be placed in Clearing	0	0	0	0	0	0
	1	8,010	4,820	5,830	5,260	8,020
	4	-11,570	-10,870	-10,650	-10,350	-12,110
	5	-2,040	-1,900	-1,780	-2,080	-2,110
	6	-1,130	-1,250	-710	-1,480	
	7	-570	-540	-610	-620	
	8	-80	310	-80	1,120	
	12	430	530	280	290	
	13	-40	120	150	90	
	14	80	200	680	-60	
	15	60	530	100	160	