

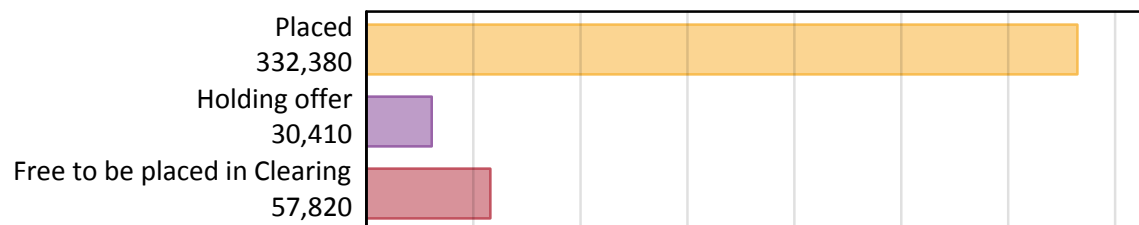
# Daily Clearing Analysis: Overview

Analysis at 00:05 on Tuesday 20 August 2019 (5 days after A level results day)

## A.1 Applicants by type and status from England, 2019 cycle

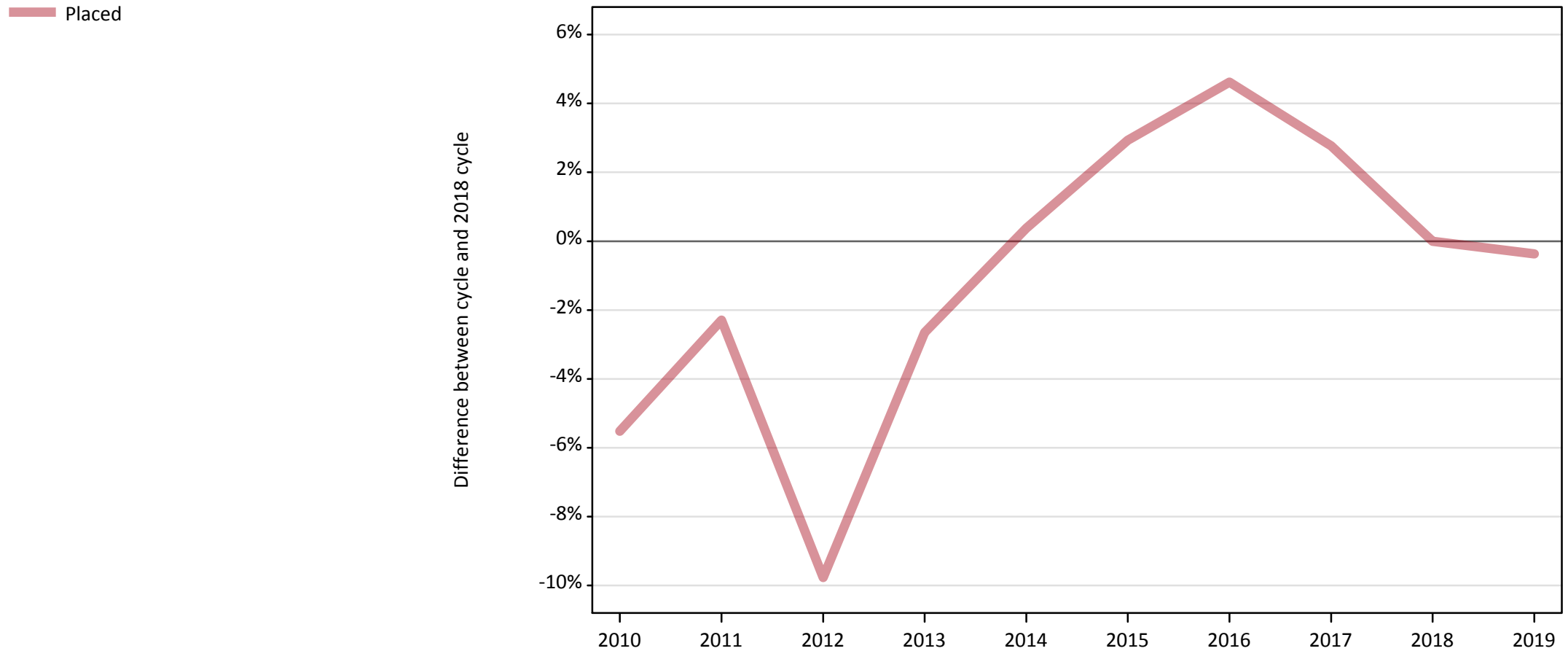
Applicant type	Status	2019
Main scheme	Placed (Clearing)	30,590
	Placed (Adjustment)	500
	Placed (Firm)	262,250
	Placed (Insurance)	24,310
	Placed (Other)	8,760
	Holding offer	30,410
	Free to be placed in Clearing	57,820
Direct to Clearing	Placed (Direct to Clearing)	5,980
	Other (Direct to Clearing)	7,110
All applicants	Placed	332,380

## A.2 Summary of applicants who are placed, holding offers or free to be placed in Clearing ( England )



### A.3 All placed applicants from England: 5 days after A level results day

All placed applicants: difference between cycle and 2018 cycle



Note: The percentage change is not plotted in the above chart for groups with fewer than 30 placed applicants in any one cycle.

#### A.4 All placed applicants from England: 5 days after A level results day

All placed applicants: applicants at 5 days after A level results day

Applicant type	Status	2010	2011	2012	2013	2014	2015	2016	2017	2018	2019
All applicants	Placed	315,200	325,950	301,010	324,750	334,870	343,390	349,010	342,840	333,610	332,380

#### A.5 All placed applicants from England: 5 days after A level results day

All placed applicants: difference between cycle and 2018 cycle

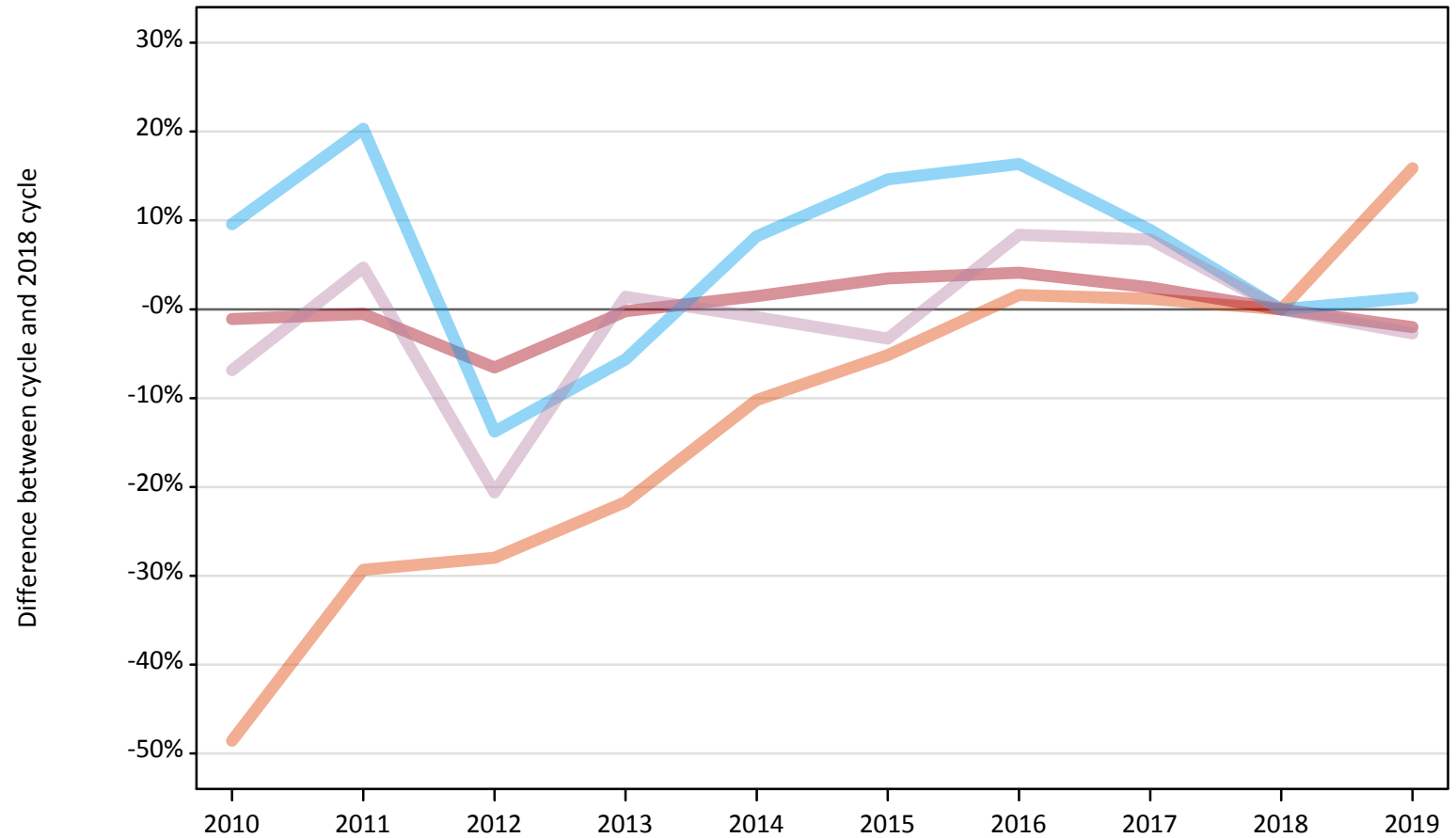
Applicant type	Status	2010	2011	2012	2013	2014	2015	2016	2017	2018	2019
All applicants	Placed	-6%	-2%	-10%	-3%	0%	3%	5%	3%	0%	-0%

Note: The percentage change is not recorded in the above table for groups with fewer than 10 placed applicants in that cycle or in the 2018 cycle.

## A.6 Placed main scheme applicants from England: 5 days after A level results day

All Main scheme placed routes (excluding Adjustment): difference between cycle and 2018 cycle

- Placed (Clearing)
- Placed (Firm)
- Placed (Insurance)
- Placed (Other)



Note: The percentage change is not plotted in the above chart for groups with fewer than 30 placed applicants in any one cycle.

### A.7 Placed main scheme applicants from England: 5 days after A level results day

All Main scheme placed routes (excluding Adjustment): applicants at 5 days after A level results day

Applicant type	Status	2010	2011	2012	2013	2014	2015	2016	2017	2018	2019
Main scheme	Placed (Clearing)	13,570	18,660	19,010	20,670	23,700	25,040	26,830	26,710	26,400	30,590
	Placed (Firm)	264,700	266,300	250,140	267,050	271,580	276,980	278,720	274,260	267,670	262,250
	Placed (Insurance)	26,290	28,870	20,690	22,640	25,970	27,510	27,910	26,140	23,990	24,310
	Placed (Other)	8,390	9,430	7,150	9,130	8,920	8,710	9,760	9,710	9,010	8,760

### A.8 Placed main scheme applicants from England: 5 days after A level results day

All Main scheme placed routes (excluding Adjustment): difference between cycle and 2018 cycle

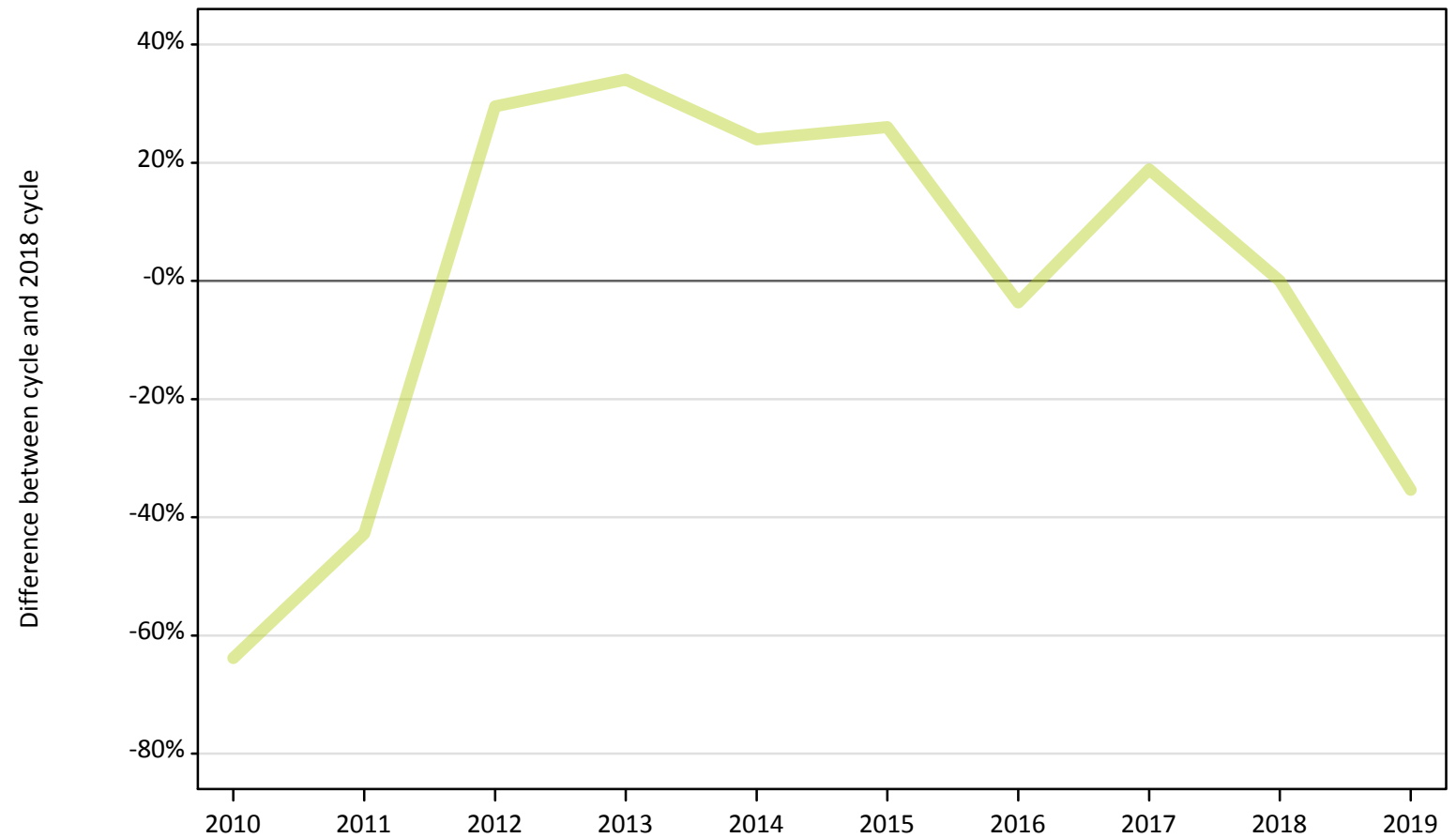
Applicant type	Status	2010	2011	2012	2013	2014	2015	2016	2017	2018	2019
Main scheme	Placed (Clearing)	-49%	-29%	-28%	-22%	-10%	-5%	2%	1%	0%	16%
	Placed (Firm)	-1%	-1%	-7%	-0%	1%	3%	4%	2%	0%	-2%
	Placed (Insurance)	10%	20%	-14%	-6%	8%	15%	16%	9%	0%	1%
	Placed (Other)	-7%	5%	-21%	1%	-1%	-3%	8%	8%	0%	-3%

Note: The percentage change is not recorded in the above table for groups with fewer than 10 placed applicants in that cycle or in the 2018 cycle.

## A.9 Main scheme applicants placed through adjustment: 5 days after A level results day

Placed through adjustment: difference between cycle and 2018 cycle

Placed (Adjustment)



Note: The percentage change is not plotted in the above chart for groups with fewer than 30 placed applicants in any one cycle.

### A.10 Main scheme applicants placed through adjustment: 5 days after A level results day

Placed through adjustment: applicants at 5 days after A level results day

Applicant type	Status	2010	2011	2012	2013	2014	2015	2016	2017	2018	2019
Main scheme	Placed (Adjustment)	280	440	1,000	1,030	950	970	740	910	770	500

### A.11 Main scheme applicants placed through adjustment: 5 days after A level results day

Placed through adjustment: difference between cycle and 2018 cycle

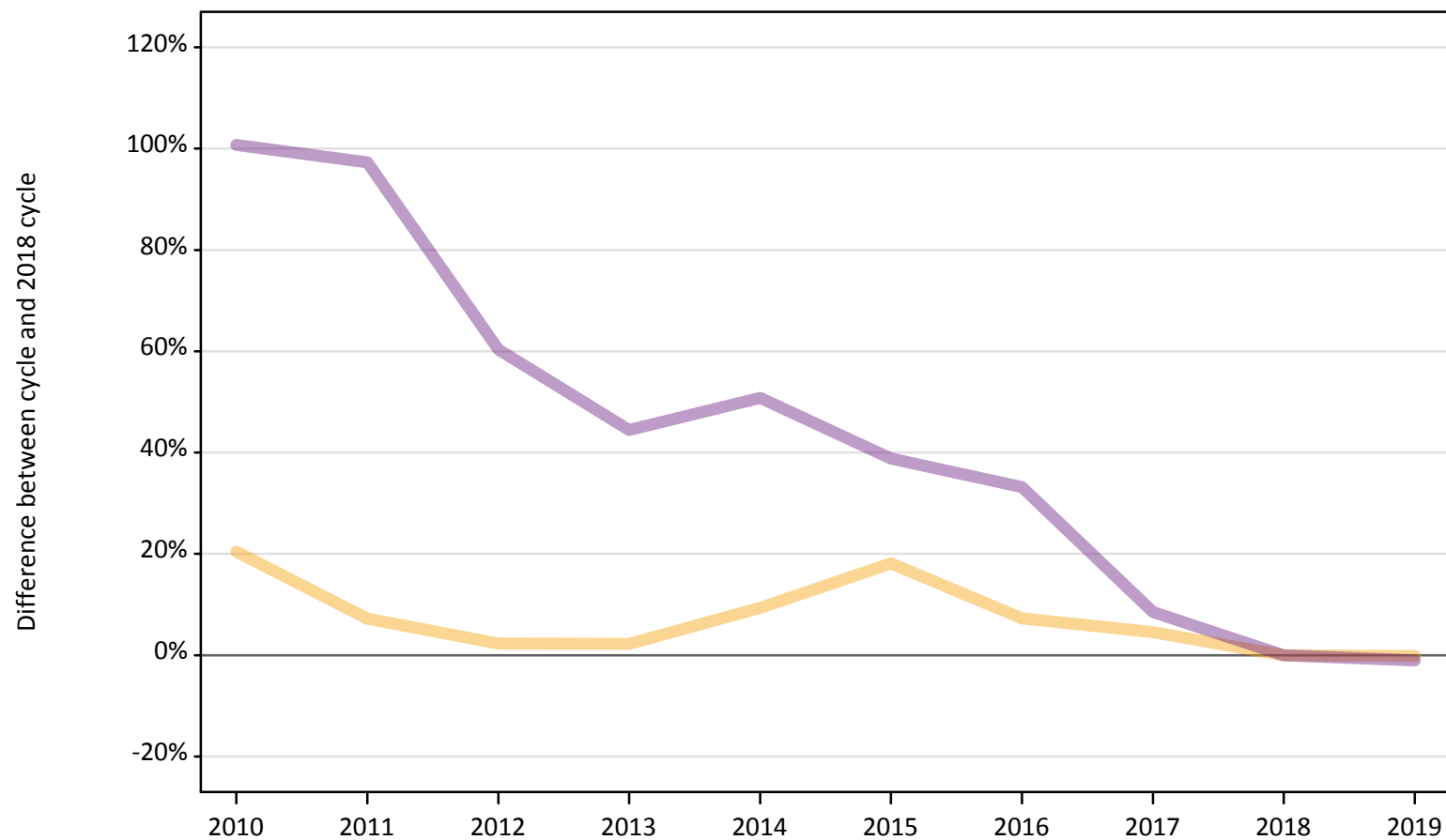
Applicant type	Status	2010	2011	2012	2013	2014	2015	2016	2017	2018	2019
Main scheme	Placed (Adjustment)	-64%	-43%	30%	34%	24%	26%	-4%	19%	0%	-35%

Note: The percentage change is not recorded in the above table for groups with fewer than 10 placed applicants in that cycle or in the 2018 cycle.

## A.12 Main scheme applicants not currently placed from England: 5 days after A level results day

Applicants in unplaced states: difference between cycle and 2018 cycle

— Holding offer  
— Free to be placed in Clearing



Note: The percentage change is not plotted in the above chart for groups with fewer than 30 unplaced applicants in any one cycle.



### A.13 Main scheme applicants not currently placed from England: 5 days after A level results day

Applicants in unplaced states: applicants at 5 days after A level results day

Applicant type	Status	2010	2011	2012	2013	2014	2015	2016	2017	2018	2019
Main scheme	Holding offer	36,690	32,650	31,150	31,140	33,300	35,970	32,680	31,840	30,460	30,410
	Free to be placed in Clearing	117,310	115,270	93,700	84,410	88,130	81,120	77,840	63,410	58,430	57,820

### A.14 Main scheme applicants not currently placed from England: 5 days after A level results day

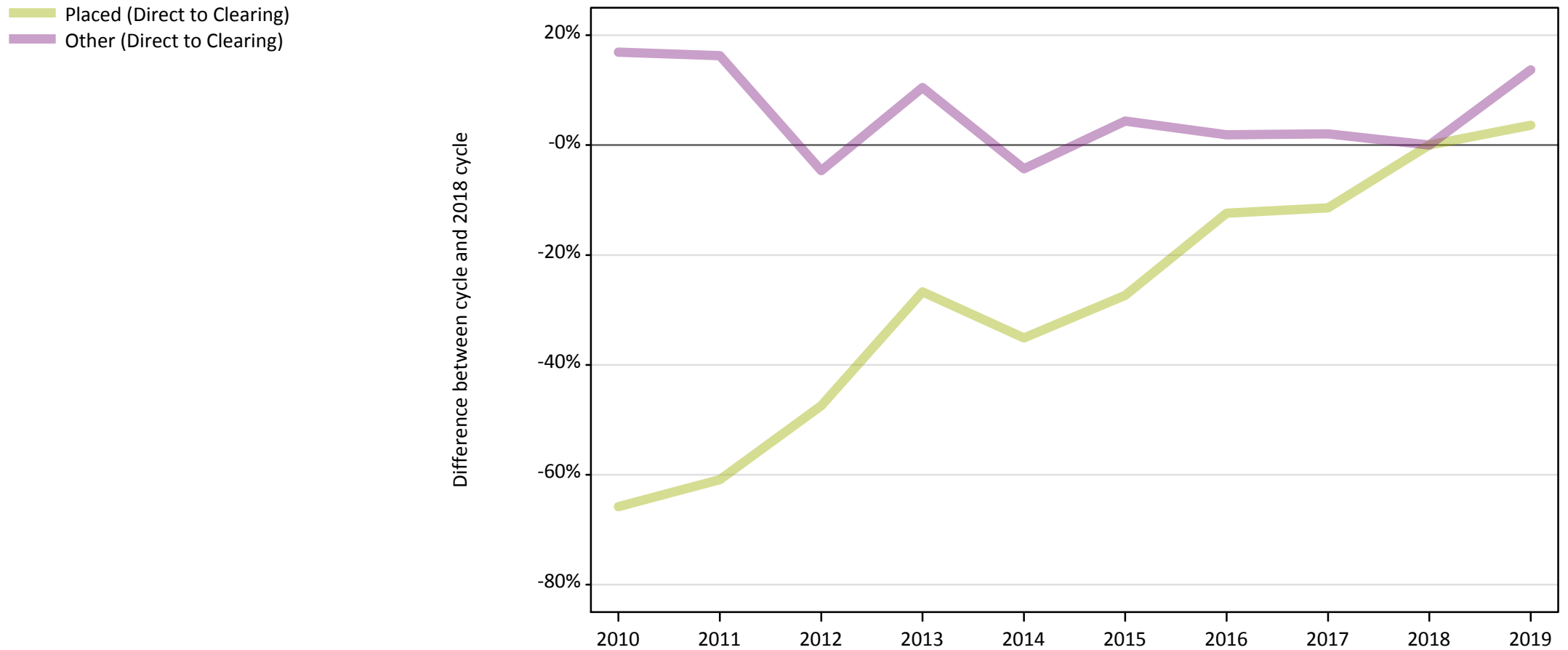
Applicants in unplaced states: difference between cycle and 2018 cycle

Applicant type	Status	2010	2011	2012	2013	2014	2015	2016	2017	2018	2019
Main scheme	Holding offer	20%	7%	2%	2%	9%	18%	7%	5%	0%	-0%
	Free to be placed in Clearing	101%	97%	60%	44%	51%	39%	33%	9%	0%	-1%

Note: The percentage change is not recorded in the above table for groups with fewer than 10 unplaced applicants in that cycle or in the 2018 cycle.

### A.15 Direct to Clearing applicants from England: 5 days after A level results day

Direct to Clearing: difference between cycle and 2018 cycle



Note: The percentage change is not plotted in the above chart for groups with fewer than 30 placed applicants in any one cycle.

### A.16 Direct to Clearing applicants from England: 5 days after A level results day

Direct to Clearing 5 days after A level results day

Applicant type	Status	2010	2011	2012	2013	2014	2015	2016	2017	2018	2019
Direct to Clearing	Placed (Direct to Clearing)	1,970	2,260	3,030	4,230	3,740	4,190	5,050	5,110	5,770	5,980
	Other (Direct to Clearing)	7,310	7,270	5,960	6,910	5,980	6,530	6,370	6,380	6,250	7,110

### A.17 Direct to Clearing applicants from England: 5 days after A level results day

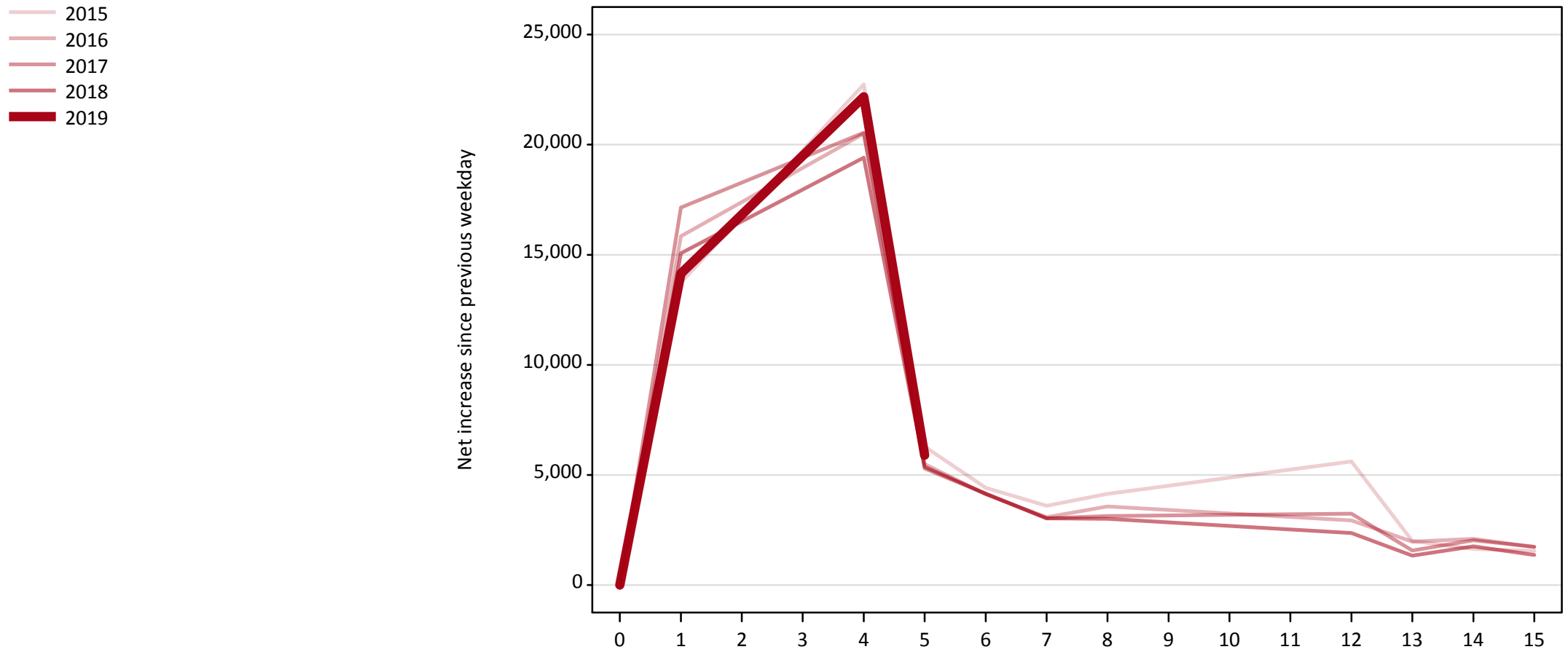
Direct to Clearing: difference between cycle and 2018 cycle

Applicant type	Status	2010	2011	2012	2013	2014	2015	2016	2017	2018	2019
Direct to Clearing	Placed (Direct to Clearing)	-66%	-61%	-47%	-27%	-35%	-27%	-12%	-11%	0%	4%
	Other (Direct to Clearing)	17%	16%	-5%	10%	-4%	4%	2%	2%	0%	14%

Note: The percentage change is not recorded in the above table for groups with fewer than 10 placed applicants in that cycle or in the 2018 cycle.

### A.18 All Placed: Daily net change (from England)

Net increase since previous weekday (2019 cycle up to 5 days after A level results day)

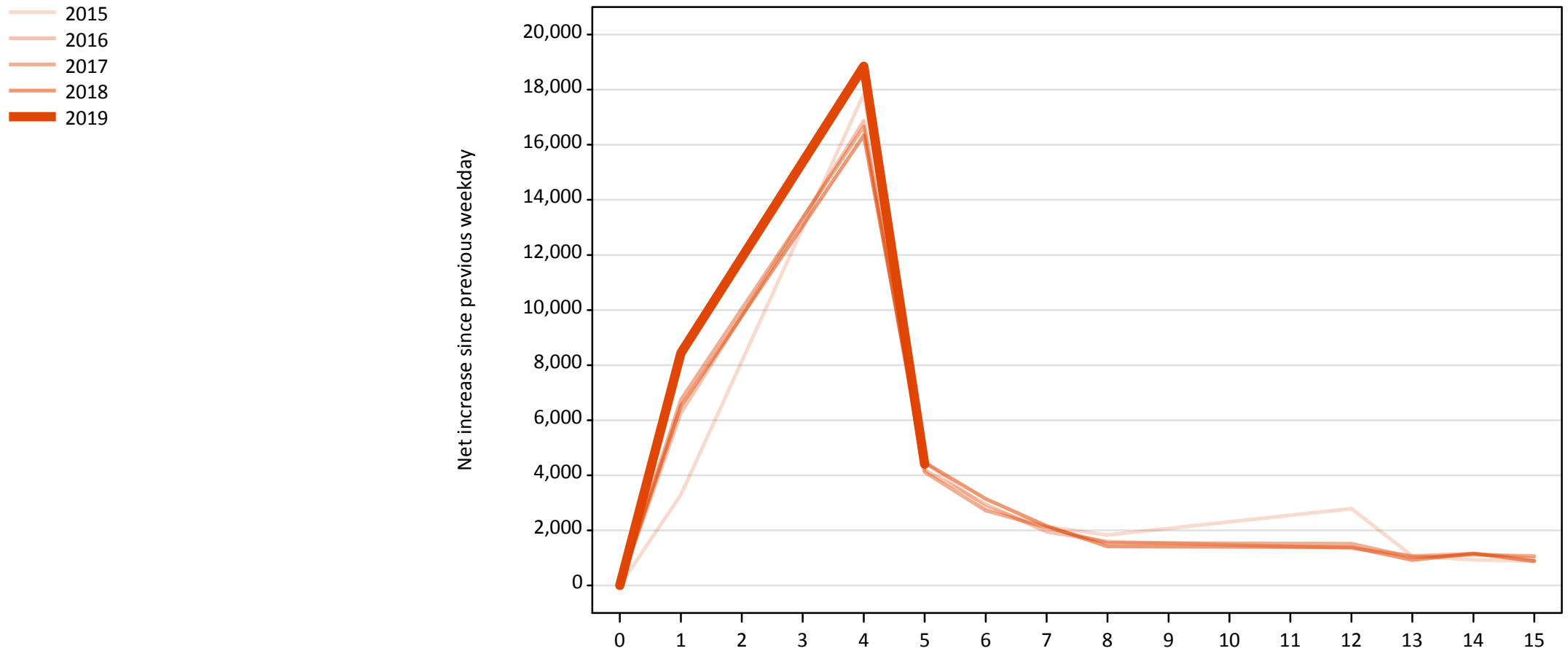


### A.19 All Placed: Daily net change (from England)

Net increase since previous weekday (2019 cycle up to 5 days after A level results day)

Applicant status, days since A level results day		2015	2016	2017	2018	2019
All Placed	0	0	0	0	0	0
	1	13,730	15,840	17,150	15,070	14,150
	4	22,730	20,500	20,540	19,410	22,170
	5	6,300	5,500	5,300	5,370	5,900
	6	4,410	4,120	4,140	4,150	
	7	3,600	3,080	3,030	3,030	
	8	4,140	3,570	3,130	3,010	
	12	5,610	2,940	3,240	2,360	
	13	2,000	1,970	1,560	1,340	
	14	1,640	2,100	2,030	1,760	
	15	1,540	1,730	1,740	1,360	

**A.20 Placed through Clearing only: Daily net change (from England)**  
Net increase since previous weekday (2019 cycle up to 5 days after A level results day)



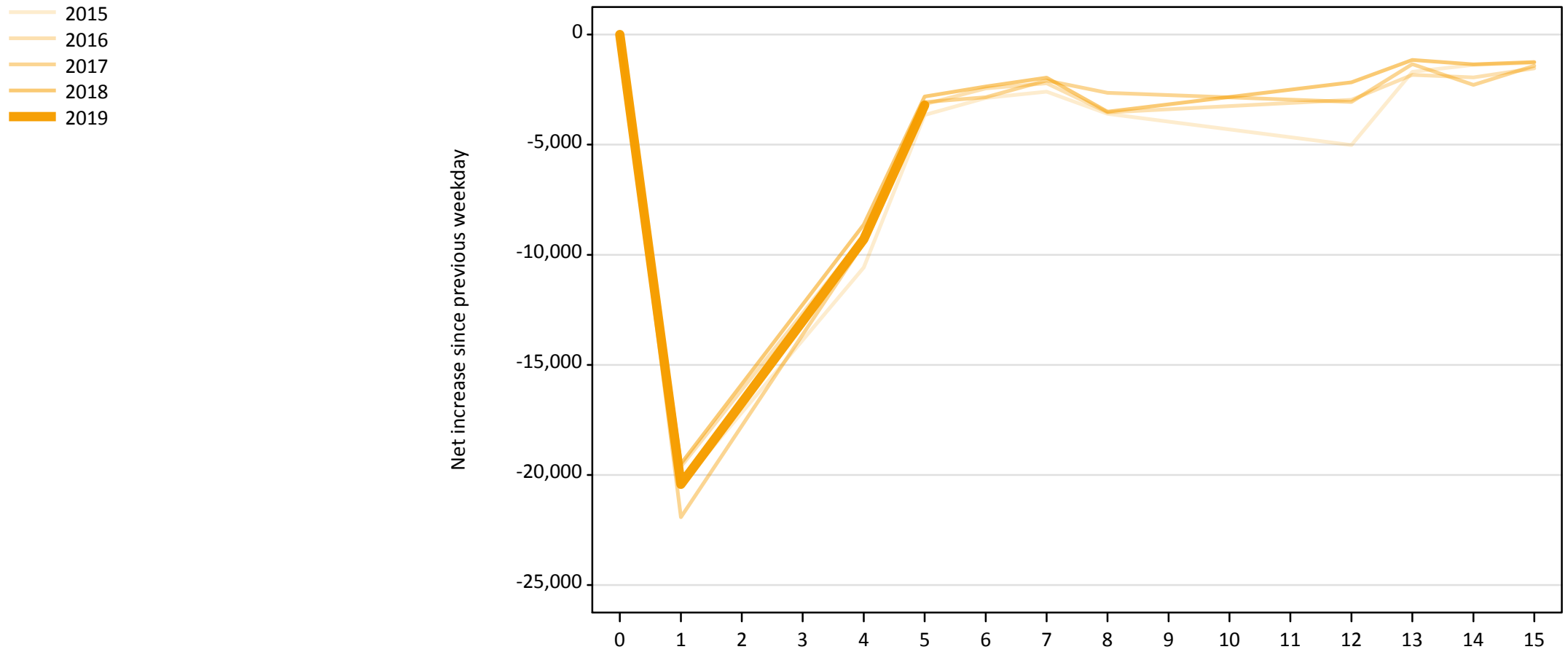
### A.21 Placed through Clearing only: Daily net change (from England)

Net increase since previous weekday (2019 cycle up to 5 days after A level results day)

Applicant status, days since A level results day		2015	2016	2017	2018	2019
Placed through Clearing only	0	0	0	0	0	0
	1	3,300	6,260	6,740	6,510	8,440
	4	17,850	16,870	16,660	16,340	18,850
	5	4,470	4,190	4,120	4,470	4,410
	6	2,830	2,940	2,720	3,150	
	7	2,140	1,950	2,100	2,160	
	8	1,830	1,590	1,540	1,410	
	12	2,790	1,360	1,510	1,390	
	13	1,060	1,080	1,020	920	
	14	930	1,160	1,120	1,160	
	15	880	970	1,060	880	

## A.22 Holding Offer: Daily net change (from England)

Net increase since previous weekday (2019 cycle up to 5 days after A level results day)



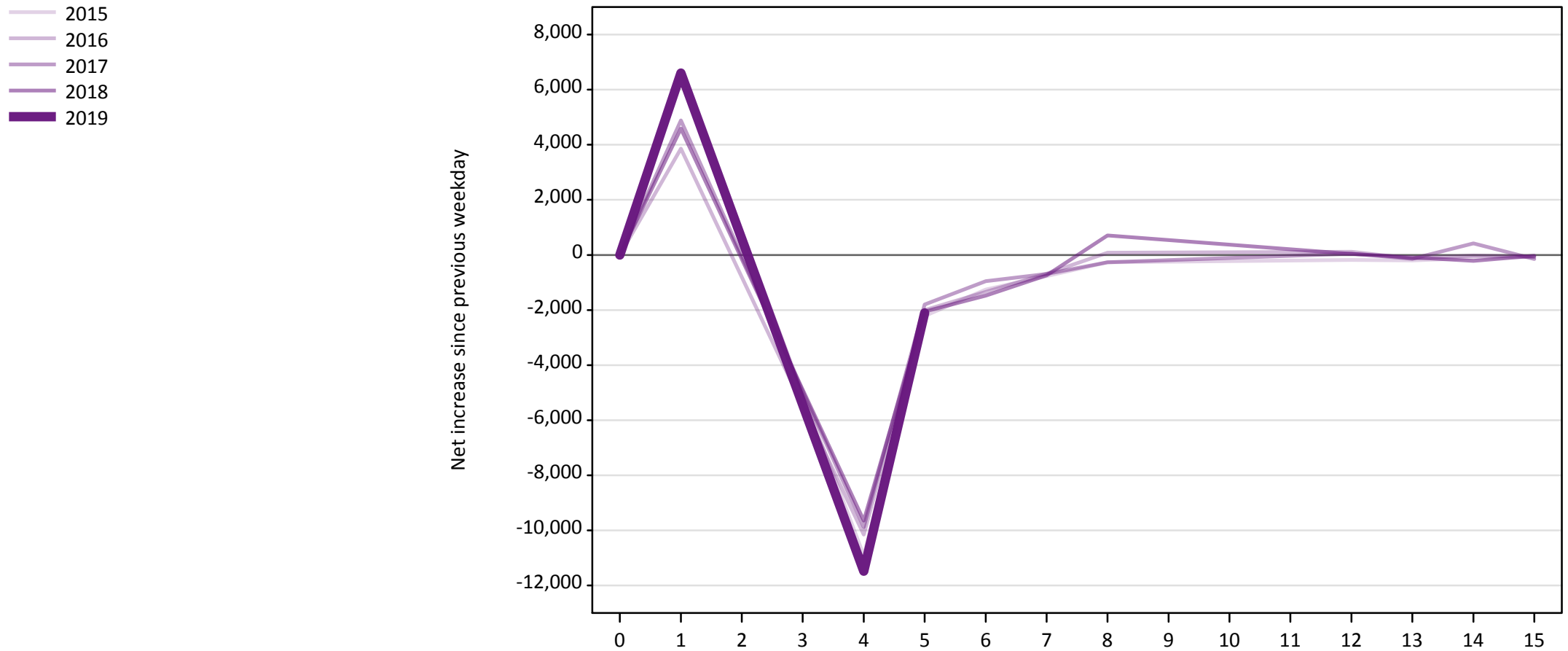


### A.23 Holding Offer: Daily net change (from England)

Net increase since previous weekday (2019 cycle up to 5 days after A level results day)

Applicant status, days since A level results day		2015	2016	2017	2018	2019
Holding Offer	0	0	0	0	0	0
	1	-20,460	-19,620	-21,920	-19,500	-20,430
	4	-10,580	-9,160	-9,470	-8,630	-9,300
	5	-3,660	-3,160	-3,060	-2,820	-3,210
	6	-2,870	-2,450	-2,840	-2,360	
	7	-2,590	-2,210	-2,080	-1,960	
	8	-3,590	-3,540	-2,650	-3,510	
	12	-5,010	-2,970	-3,060	-2,170	
	13	-1,690	-1,830	-1,340	-1,160	
	14	-1,370	-1,950	-2,290	-1,360	
	15	-1,280	-1,530	-1,420	-1,240	

**A.24 Free to be placed in Clearing: Daily net change (from England)**  
Net increase since previous weekday (2019 cycle up to 5 days after A level results day)



**A.25 Free to be placed in Clearing: Daily net change (from England)**

Net increase since previous weekday (2019 cycle up to 5 days after A level results day)

Applicant status, days since A level results day		2015	2016	2017	2018	2019
Free to be placed in Clearing	0	0	0	0	0	0
	1	6,690	3,860	4,890	4,590	6,600
	4	-10,920	-10,160	-9,880	-9,640	-11,480
	5	-2,220	-2,000	-1,800	-2,050	-2,110
	6	-1,260	-1,340	-950	-1,480	
	7	-770	-680	-690	-740	
	8	-270	80	-270	710	
	12	-190	110	50	40	
	13	-200	-130	-140	-90	
	14	-120	-20	420	-220	
	15	-70	-70	-150	-30	