

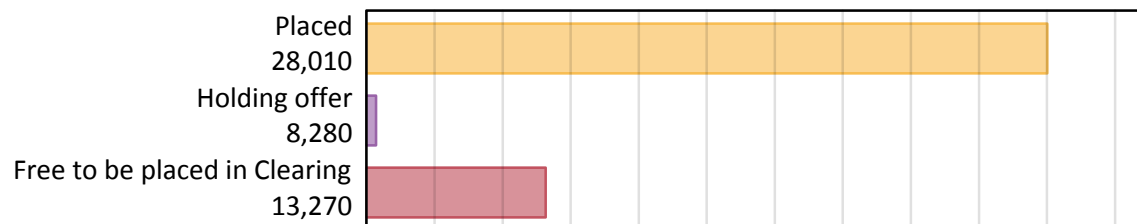
# Daily Clearing Analysis: Overview

Analysis at 00:05 on Tuesday 20 August 2019 (5 days after A level results day)

## A.1 Applicants by type and status from the EU - excluding UK, 2019 cycle

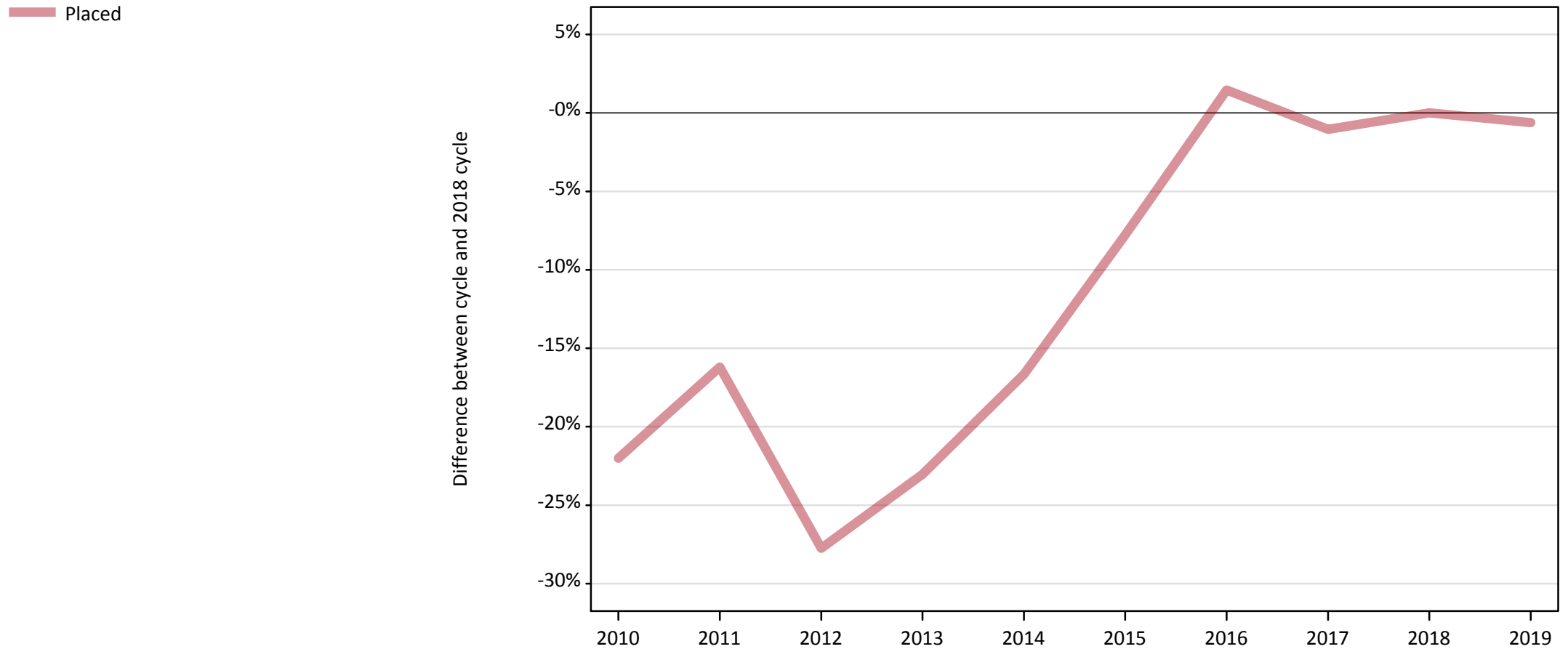
Applicant type	Status	2019
Main scheme	Placed (Clearing)	1,140
	Placed (Adjustment)	20
	Placed (Firm)	23,360
	Placed (Insurance)	2,000
	Placed (Other)	1,190
	Holding offer	8,280
	Free to be placed in Clearing	13,270
Direct to Clearing	Placed (Direct to Clearing)	310
	Other (Direct to Clearing)	390
All applicants	Placed	28,010

## A.2 Summary of applicants who are placed, holding offers or free to be placed in Clearing ( the EU - excluding UK )



### A.3 All placed applicants from the EU - excluding UK: 5 days after A level results day

All placed applicants: difference between cycle and 2018 cycle



Note: The percentage change is not plotted in the above chart for groups with fewer than 30 placed applicants in any one cycle.

#### A.4 All placed applicants from the EU - excluding UK: 5 days after A level results day

All placed applicants: applicants at 5 days after A level results day

Applicant type	Status	2010	2011	2012	2013	2014	2015	2016	2017	2018	2019
All applicants	Placed	21,980	23,620	20,360	21,690	23,490	25,990	28,600	27,890	28,180	28,010

#### A.5 All placed applicants from the EU - excluding UK: 5 days after A level results day

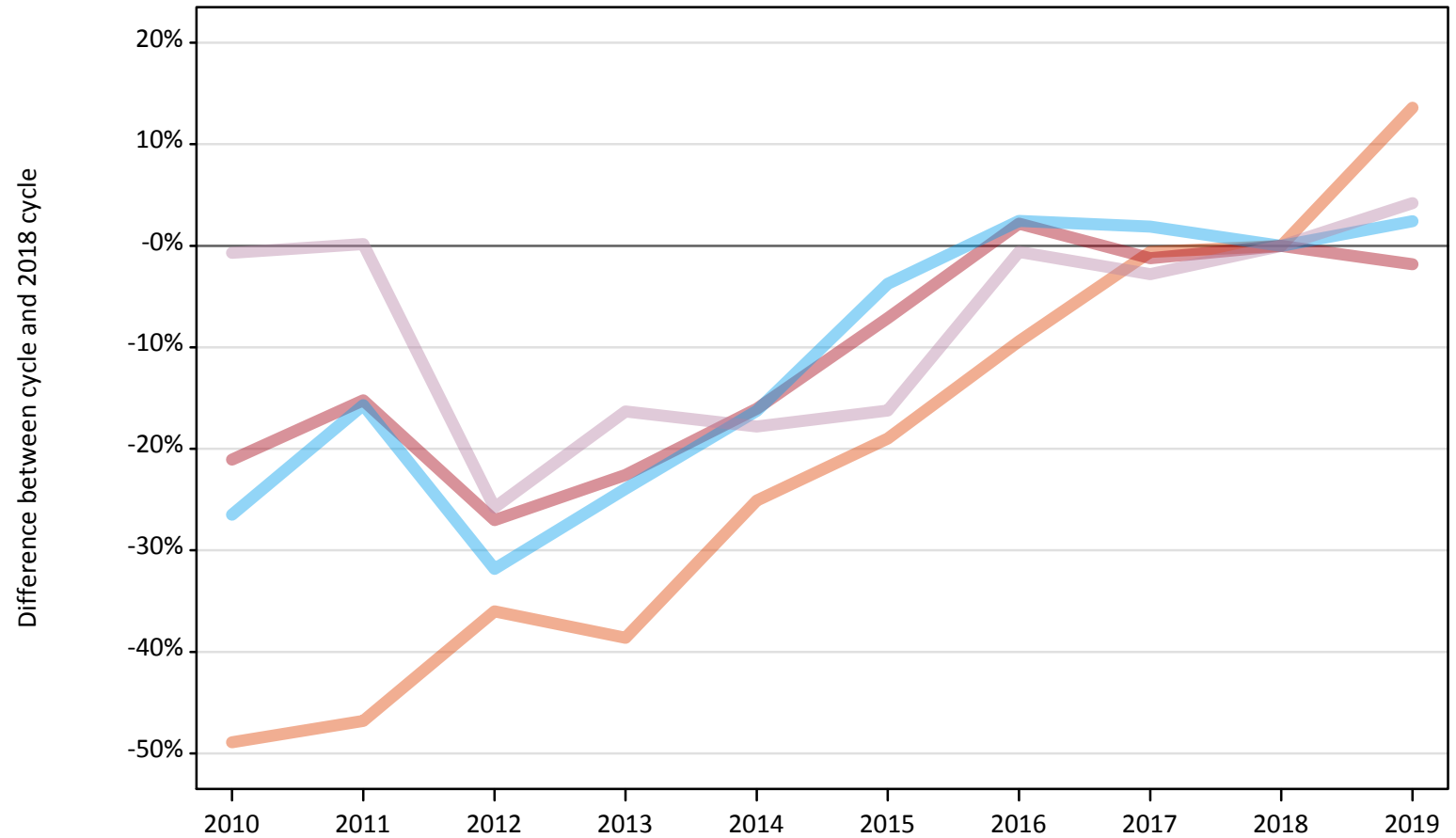
All placed applicants: difference between cycle and 2018 cycle

Applicant type	Status	2010	2011	2012	2013	2014	2015	2016	2017	2018	2019
All applicants	Placed	-22%	-16%	-28%	-23%	-17%	-8%	1%	-1%	0%	-1%

Note: The percentage change is not recorded in the above table for groups with fewer than 10 placed applicants in that cycle or in the 2018 cycle.

**A.6 Placed main scheme applicants from the EU - excluding UK: 5 days after A level results day**  
All Main scheme placed routes (excluding Adjustment): difference between cycle and 2018 cycle

- Placed (Clearing)
- Placed (Firm)
- Placed (Insurance)
- Placed (Other)



Note: The percentage change is not plotted in the above chart for groups with fewer than 30 placed applicants in any one cycle.

### A.7 Placed main scheme applicants from the EU - excluding UK: 5 days after A level results day

All Main scheme placed routes (excluding Adjustment): applicants at 5 days after A level results day

Applicant type	Status	2010	2011	2012	2013	2014	2015	2016	2017	2018	2019
Main scheme	Placed (Clearing)	510	530	640	610	750	810	910	990	1,000	1,140
	Placed (Firm)	18,780	20,170	17,360	18,420	19,970	22,090	24,310	23,500	23,790	23,360
	Placed (Insurance)	1,430	1,650	1,330	1,480	1,630	1,880	2,000	1,990	1,950	2,000
	Placed (Other)	1,130	1,140	850	950	940	960	1,130	1,110	1,140	1,190

### A.8 Placed main scheme applicants from the EU - excluding UK: 5 days after A level results day

All Main scheme placed routes (excluding Adjustment): difference between cycle and 2018 cycle

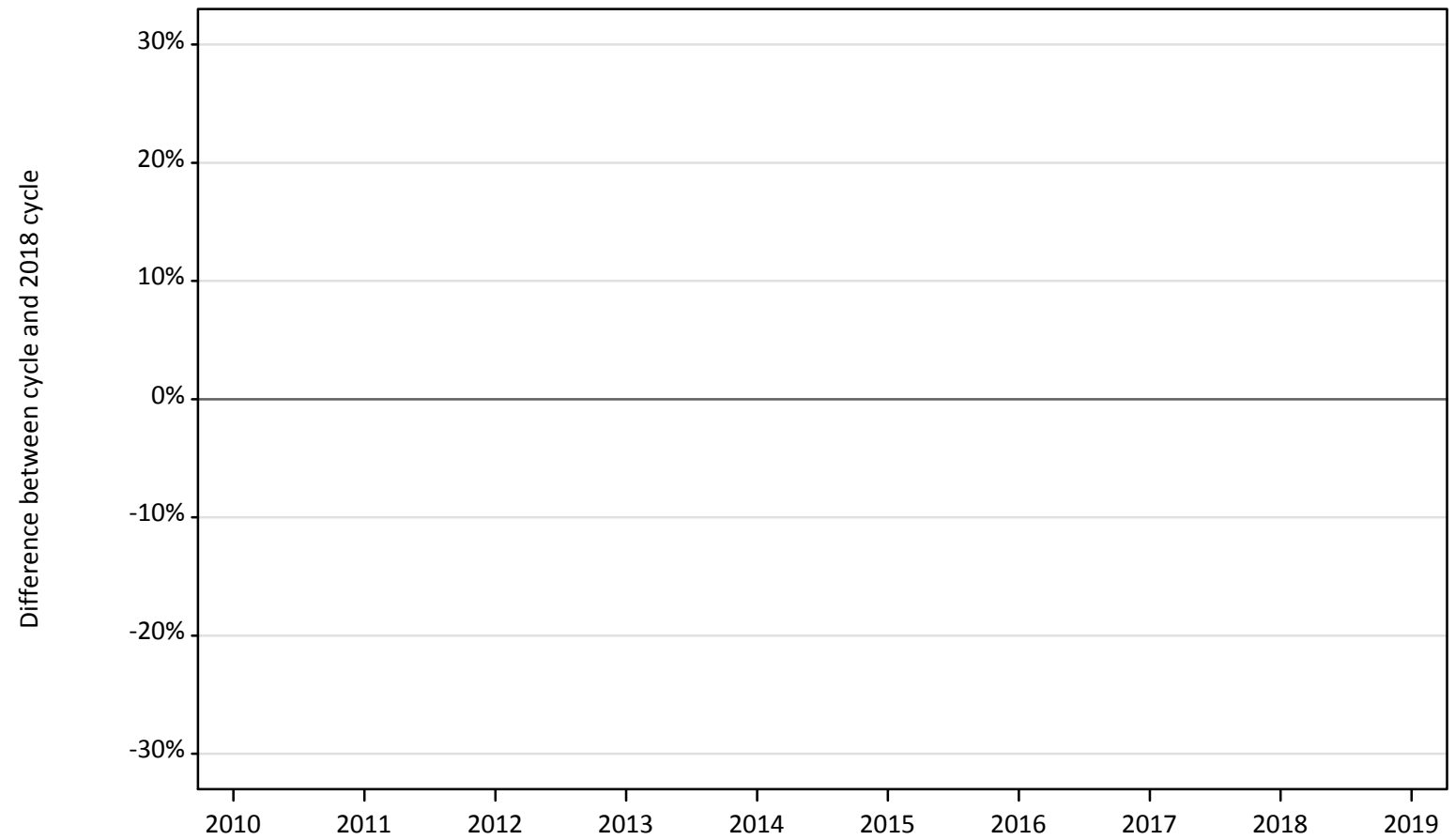
Applicant type	Status	2010	2011	2012	2013	2014	2015	2016	2017	2018	2019
Main scheme	Placed (Clearing)	-49%	-47%	-36%	-39%	-25%	-19%	-9%	-1%	0%	14%
	Placed (Firm)	-21%	-15%	-27%	-23%	-16%	-7%	2%	-1%	0%	-2%
	Placed (Insurance)	-26%	-16%	-32%	-24%	-16%	-4%	2%	2%	0%	2%
	Placed (Other)	-1%	0%	-26%	-16%	-18%	-16%	-1%	-3%	0%	4%

Note: The percentage change is not recorded in the above table for groups with fewer than 10 placed applicants in that cycle or in the 2018 cycle.

## A.9 Main scheme applicants placed through adjustment: 5 days after A level results day

Placed through adjustment: difference between cycle and 2018 cycle

Placed (Adjustment)



Note: The percentage change is not plotted in the above chart for groups with fewer than 30 placed applicants in any one cycle.

### A.10 Main scheme applicants placed through adjustment: 5 days after A level results day

Placed through adjustment: applicants at 5 days after A level results day

Applicant type	Status	2010	2011	2012	2013	2014	2015	2016	2017	2018	2019
Main scheme	Placed (Adjustment)	10	10	30	30	30	40	40	40	30	20

### A.11 Main scheme applicants placed through adjustment: 5 days after A level results day

Placed through adjustment: difference between cycle and 2018 cycle

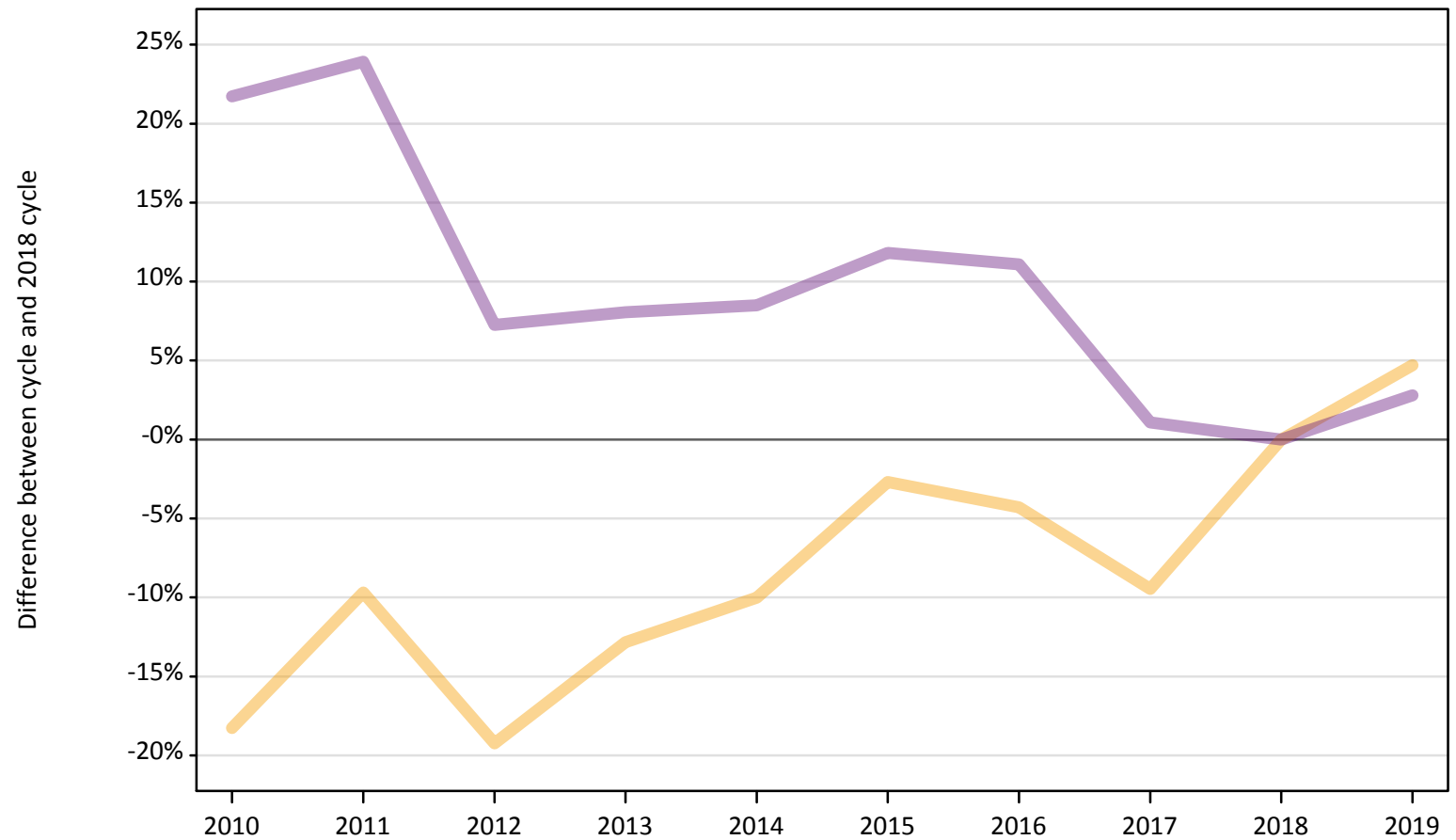
Applicant type	Status	2010	2011	2012	2013	2014	2015	2016	2017	2018	2019
Main scheme	Placed (Adjustment)	-52%	-56%	7%	26%	26%	37%	33%	56%	0%	-22%

Note: The percentage change is not recorded in the above table for groups with fewer than 10 placed applicants in that cycle or in the 2018 cycle.

### A.12 Main scheme applicants not currently placed from the EU - excluding UK: 5 days after A level results day

Applicants in unplaced states: difference between cycle and 2018 cycle

- Holding offer
- Free to be placed in Clearing



Note: The percentage change is not plotted in the above chart for groups with fewer than 30 unplaced applicants in any one cycle.



**A.13 Main scheme applicants not currently placed from the EU - excluding UK: 5 days after A level results day**

Applicants in unplaced states: applicants at 5 days after A level results day

Applicant type	Status	2010	2011	2012	2013	2014	2015	2016	2017	2018	2019
Main scheme	Holding offer	6,460	7,140	6,390	6,890	7,120	7,690	7,570	7,160	7,910	8,280
	Free to be placed in Clearing	15,710	15,990	13,840	13,940	14,000	14,430	14,330	13,040	12,900	13,270

**A.14 Main scheme applicants not currently placed from the EU - excluding UK: 5 days after A level results day**

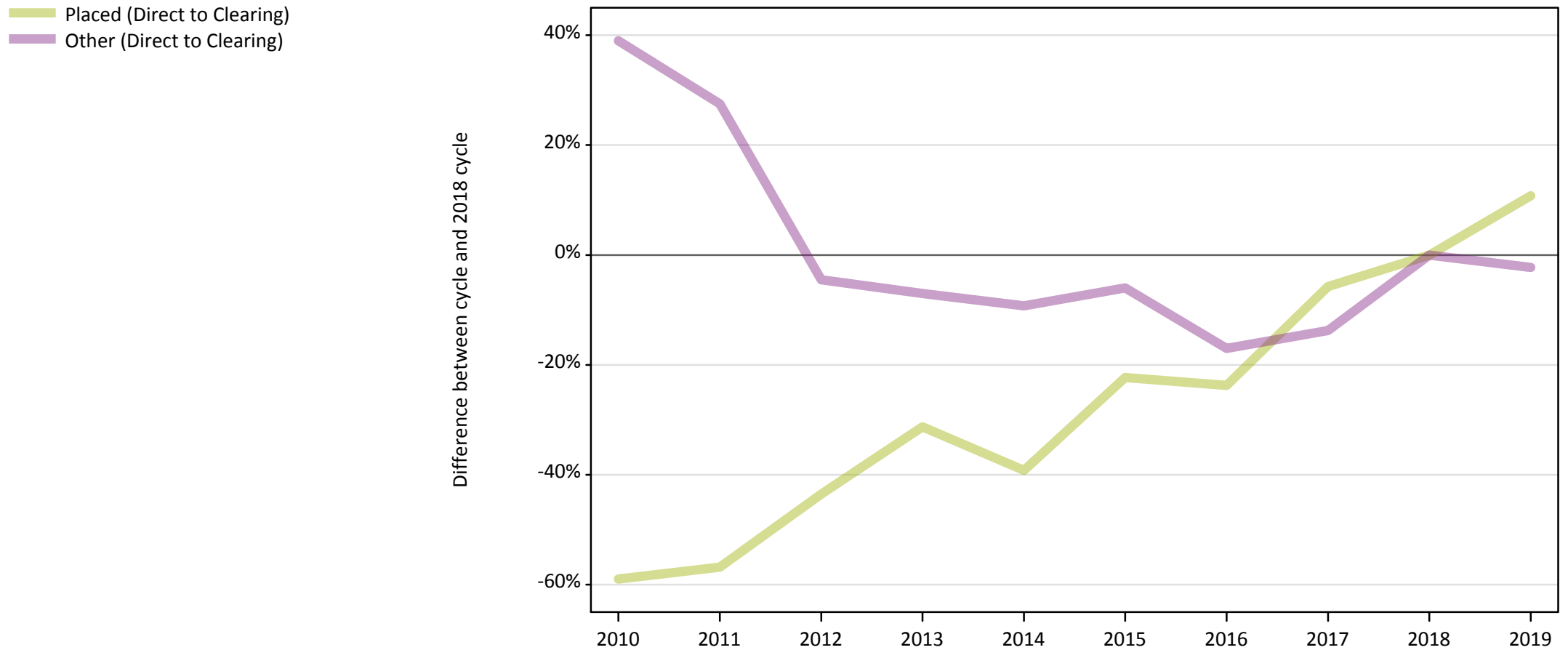
Applicants in unplaced states: difference between cycle and 2018 cycle

Applicant type	Status	2010	2011	2012	2013	2014	2015	2016	2017	2018	2019
Main scheme	Holding offer	-18%	-10%	-19%	-13%	-10%	-3%	-4%	-9%	0%	5%
	Free to be placed in Clearing	22%	24%	7%	8%	8%	12%	11%	1%	0%	3%

Note: The percentage change is not recorded in the above table for groups with fewer than 10 unplaced applicants in that cycle or in the 2018 cycle.

### A.15 Direct to Clearing applicants from the EU - excluding UK: 5 days after A level results day

Direct to Clearing: difference between cycle and 2018 cycle



Note: The percentage change is not plotted in the above chart for groups with fewer than 30 placed applicants in any one cycle.

### A.16 Direct to Clearing applicants from the EU - excluding UK: 5 days after A level results day

Direct to Clearing 5 days after A level results day

Applicant type	Status	2010	2011	2012	2013	2014	2015	2016	2017	2018	2019
Direct to Clearing	Placed (Direct to Clearing)	110	120	160	190	170	220	210	260	280	310
	Other (Direct to Clearing)	560	510	380	370	360	380	330	350	400	390

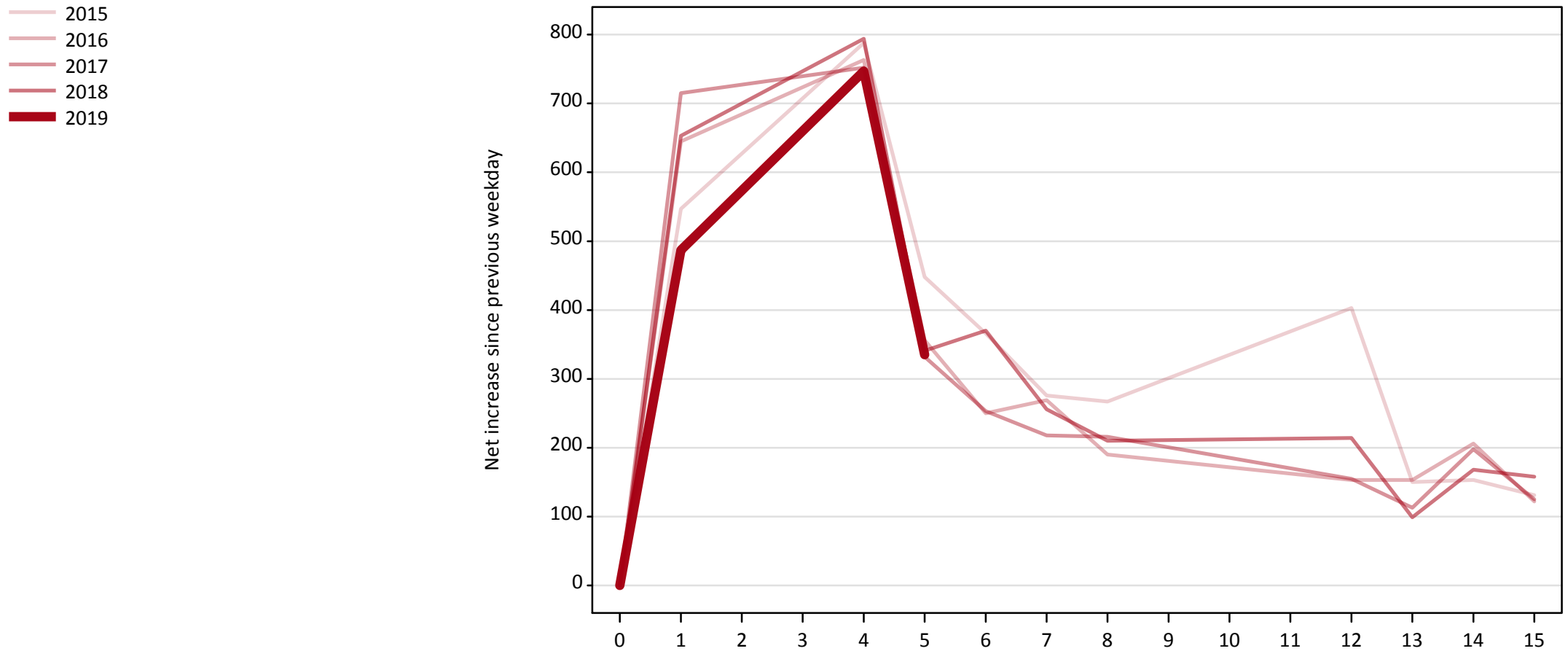
### A.17 Direct to Clearing applicants from the EU - excluding UK: 5 days after A level results day

Direct to Clearing: difference between cycle and 2018 cycle

Applicant type	Status	2010	2011	2012	2013	2014	2015	2016	2017	2018	2019
Direct to Clearing	Placed (Direct to Clearing)	-59%	-57%	-44%	-31%	-39%	-22%	-24%	-6%	0%	11%
	Other (Direct to Clearing)	39%	28%	-5%	-7%	-9%	-6%	-17%	-14%	0%	-2%

Note: The percentage change is not recorded in the above table for groups with fewer than 10 placed applicants in that cycle or in the 2018 cycle.

**A.18 All Placed: Daily net change (from the EU - excluding UK)**  
Net increase since previous weekday (2019 cycle up to 5 days after A level results day)

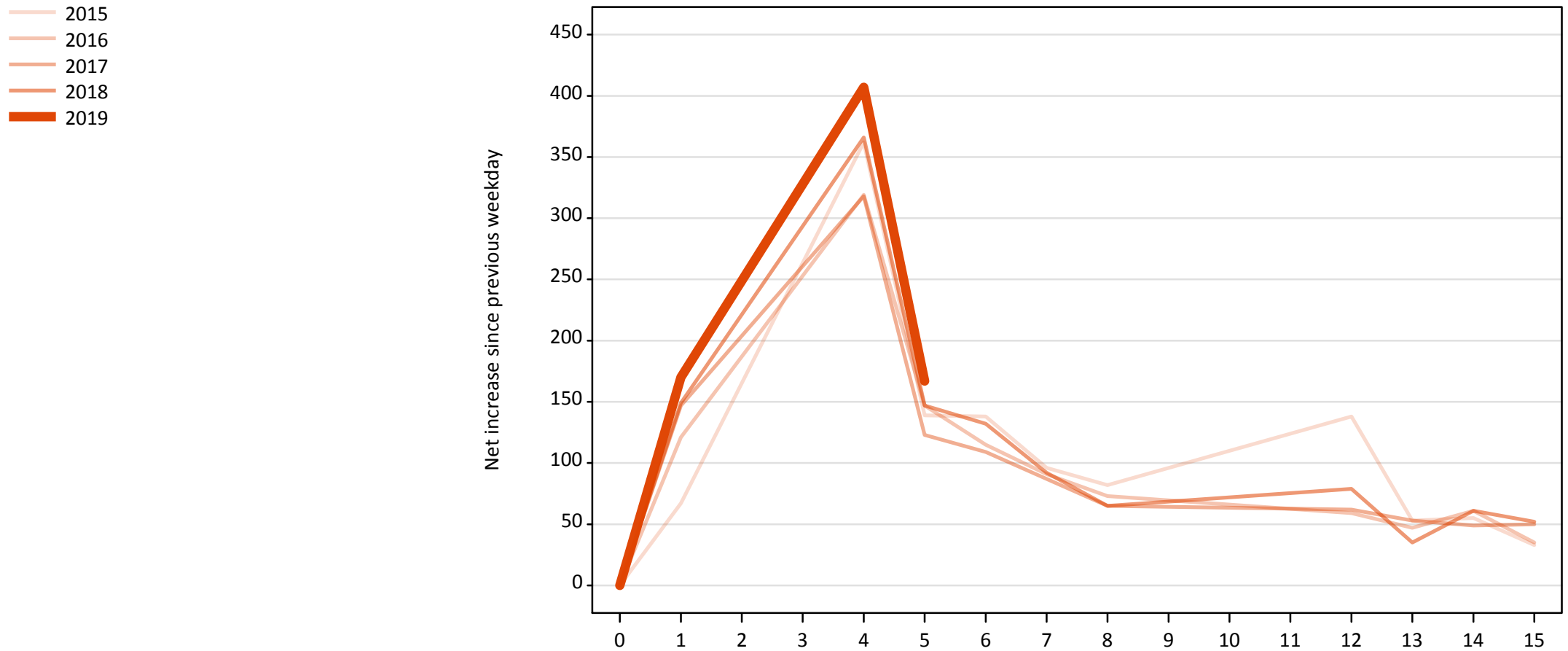


**A.19 All Placed: Daily net change (from the EU - excluding UK)**

Net increase since previous weekday (2019 cycle up to 5 days after A level results day)

Applicant status, days since A level results day		2015	2016	2017	2018	2019
All Placed	0	0	0	0	0	0
	1	550	650	720	650	490
	4	790	760	750	790	750
	5	450	360	330	340	340
	6	370	250	250	370	
	7	280	270	220	260	
	8	270	190	220	210	
	12	400	150	160	210	
	13	150	150	110	100	
	14	150	210	200	170	
	15	130	120	130	160	

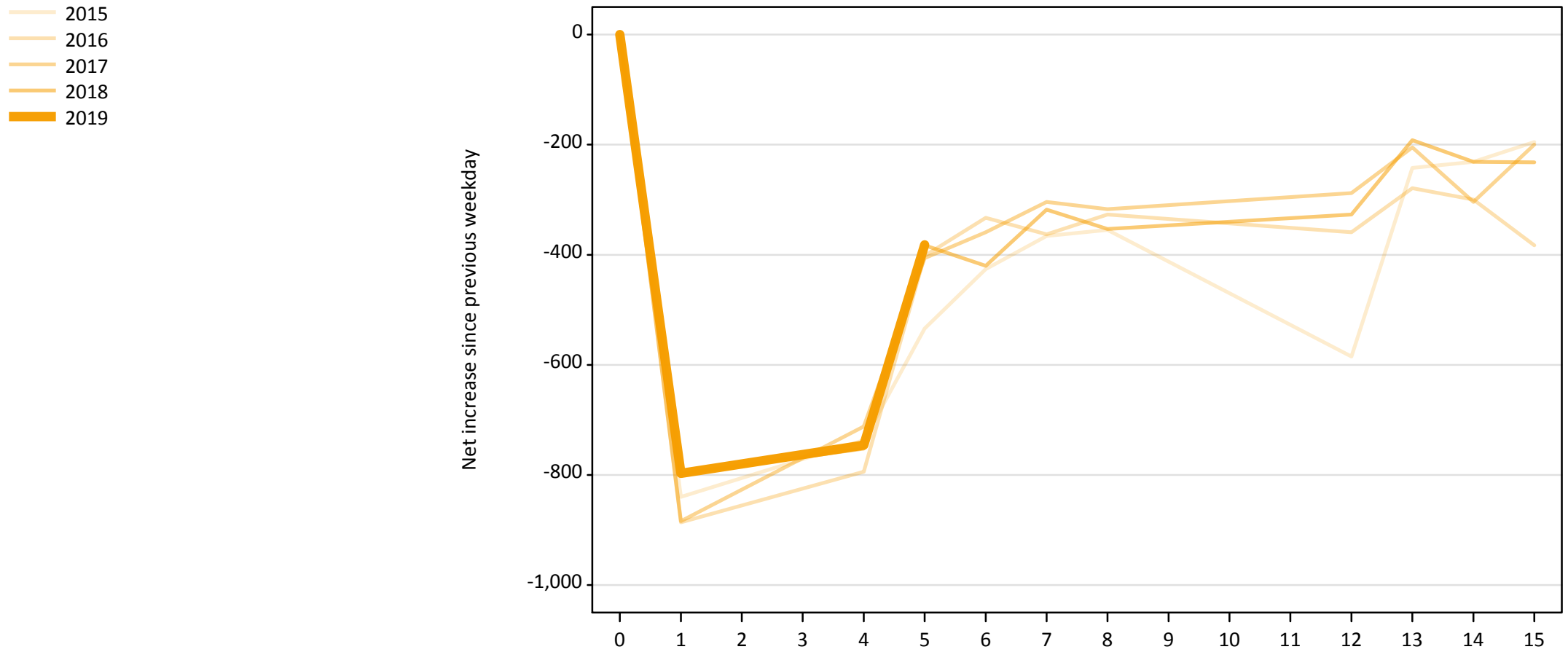
**A.20 Placed through Clearing only: Daily net change (from the EU - excluding UK)**  
Net increase since previous weekday (2019 cycle up to 5 days after A level results day)



**A.21 Placed through Clearing only: Daily net change (from the EU - excluding UK)**  
 Net increase since previous weekday (2019 cycle up to 5 days after A level results day)

Applicant status, days since A level results day		2015	2016	2017	2018	2019
Placed through Clearing only	0	0	0	0	0	0
	1	70	120	150	150	170
	4	360	320	320	370	410
	5	140	150	120	150	170
	6	140	120	110	130	
	7	100	90	90	90	
	8	80	70	70	70	
	12	140	60	60	80	
	13	50	50	50	40	
	14	60	60	50	60	
	15	30	40	50	50	

**A.22 Holding Offer: Daily net change (from the EU - excluding UK)**  
Net increase since previous weekday (2019 cycle up to 5 days after A level results day)





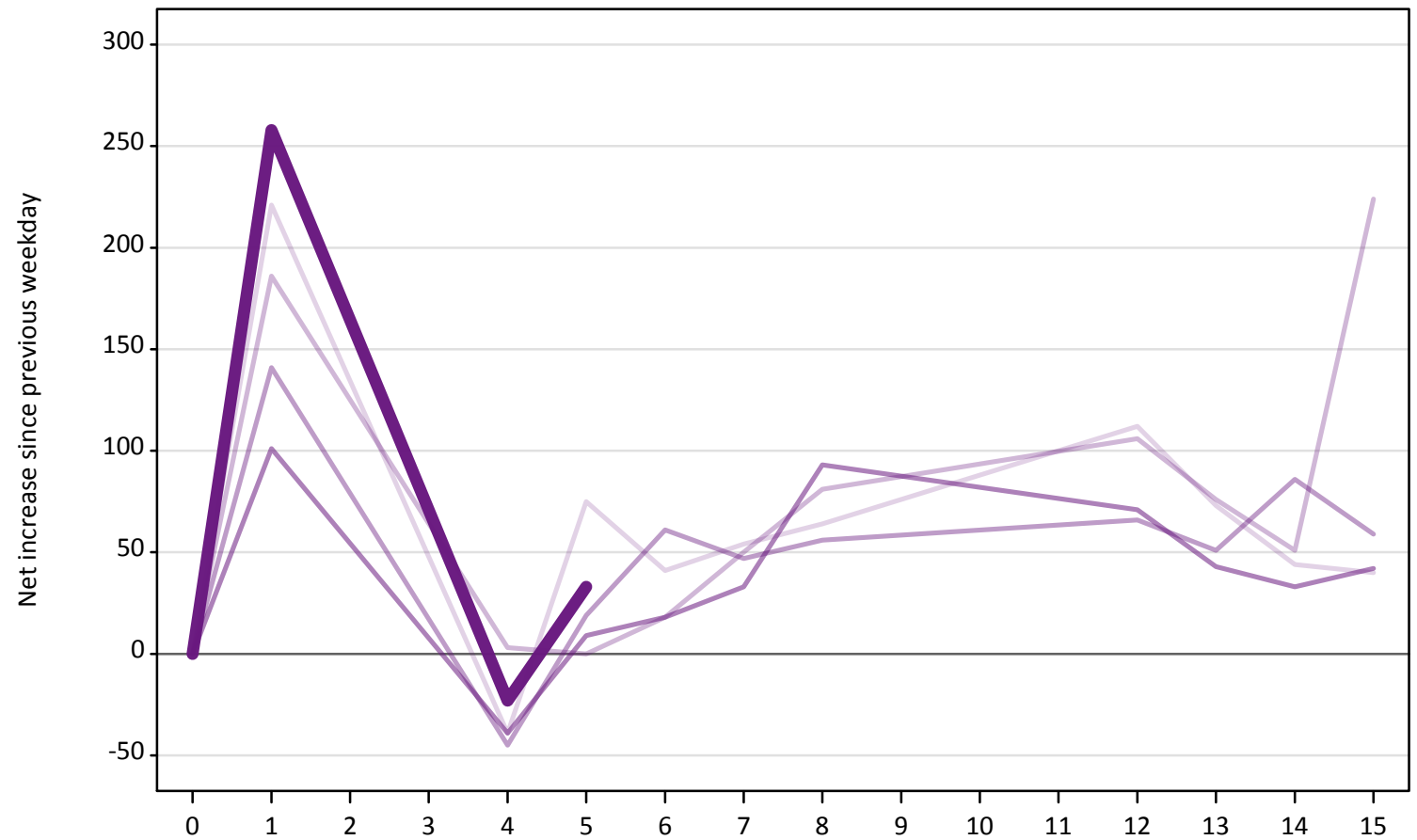
### A.23 Holding Offer: Daily net change (from the EU - excluding UK)

Net increase since previous weekday (2019 cycle up to 5 days after A level results day)

Applicant status, days since A level results day		2015	2016	2017	2018	2019
Holding Offer	0	0	0	0	0	0
	1	-840	-890	-880	-800	-800
	4	-740	-790	-710	-750	-750
	5	-530	-400	-410	-380	-380
	6	-430	-330	-360	-420	
	7	-370	-360	-300	-320	
	8	-360	-330	-320	-350	
	12	-590	-360	-290	-330	
	13	-240	-280	-210	-190	
	14	-230	-300	-300	-230	
	15	-200	-380	-200	-230	

**A.24 Free to be placed in Clearing: Daily net change (from the EU - excluding UK)**  
Net increase since previous weekday (2019 cycle up to 5 days after A level results day)

- 2015
- 2016
- 2017
- 2018
- 2019



**A.25 Free to be placed in Clearing: Daily net change (from the EU - excluding UK)**  
 Net increase since previous weekday (2019 cycle up to 5 days after A level results day)

Applicant status, days since A level results day		2015	2016	2017	2018	2019
Free to be placed in Clearing	0	0	0	0	0	0
	1	220	190	140	100	260
	4	-40	0	-50	-40	-20
	5	80	0	20	10	30
	6	40	20	60	20	
	7	50	50	50	30	
	8	60	80	60	90	
	12	110	110	70	70	
	13	70	80	50	40	
	14	40	50	90	30	
	15	40	220	60	40	