

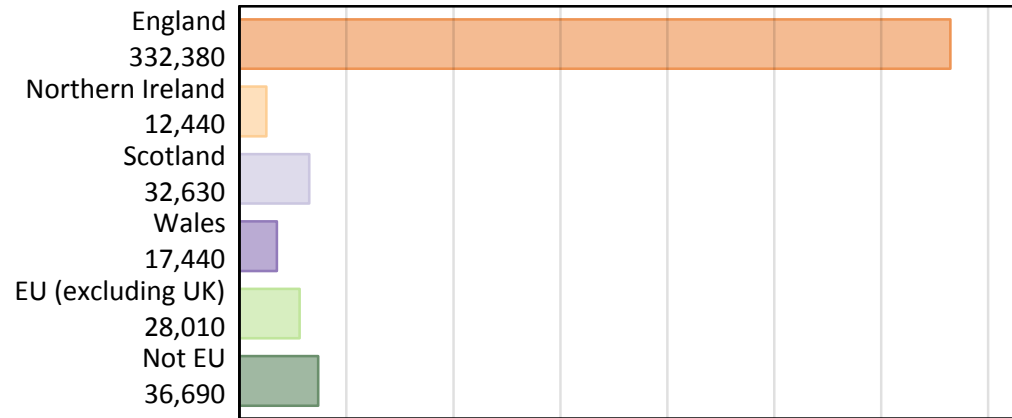
Daily Clearing Analysis: Country

Analysis at 00:05 on Tuesday 20 August 2019 (5 days after A level results day)

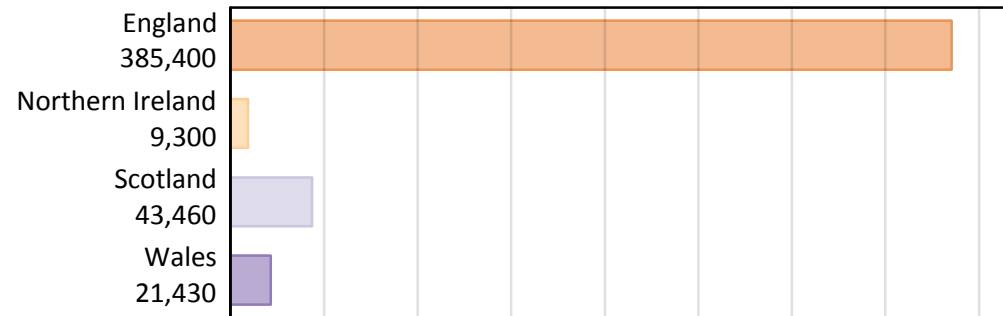
B.1 Placed applicants by country of provider and domicile, 2019 cycle

Domicile of applicant	Country of provider				
	England	Northern Ireland	Scotland	Wales	UK
England	318,310	270	4,290	9,510	332,380
Northern Ireland	3,080	8,380	870	120	12,440
Scotland	1,450	20	31,140	30	32,630
Wales	7,570	10	120	9,730	17,440
EU (excluding UK)	22,860	400	3,800	950	28,010
Not EU	32,130	230	3,250	1,080	36,690
All	385,400	9,300	43,460	21,430	459,590

B.2 Placed applicants by domicile group



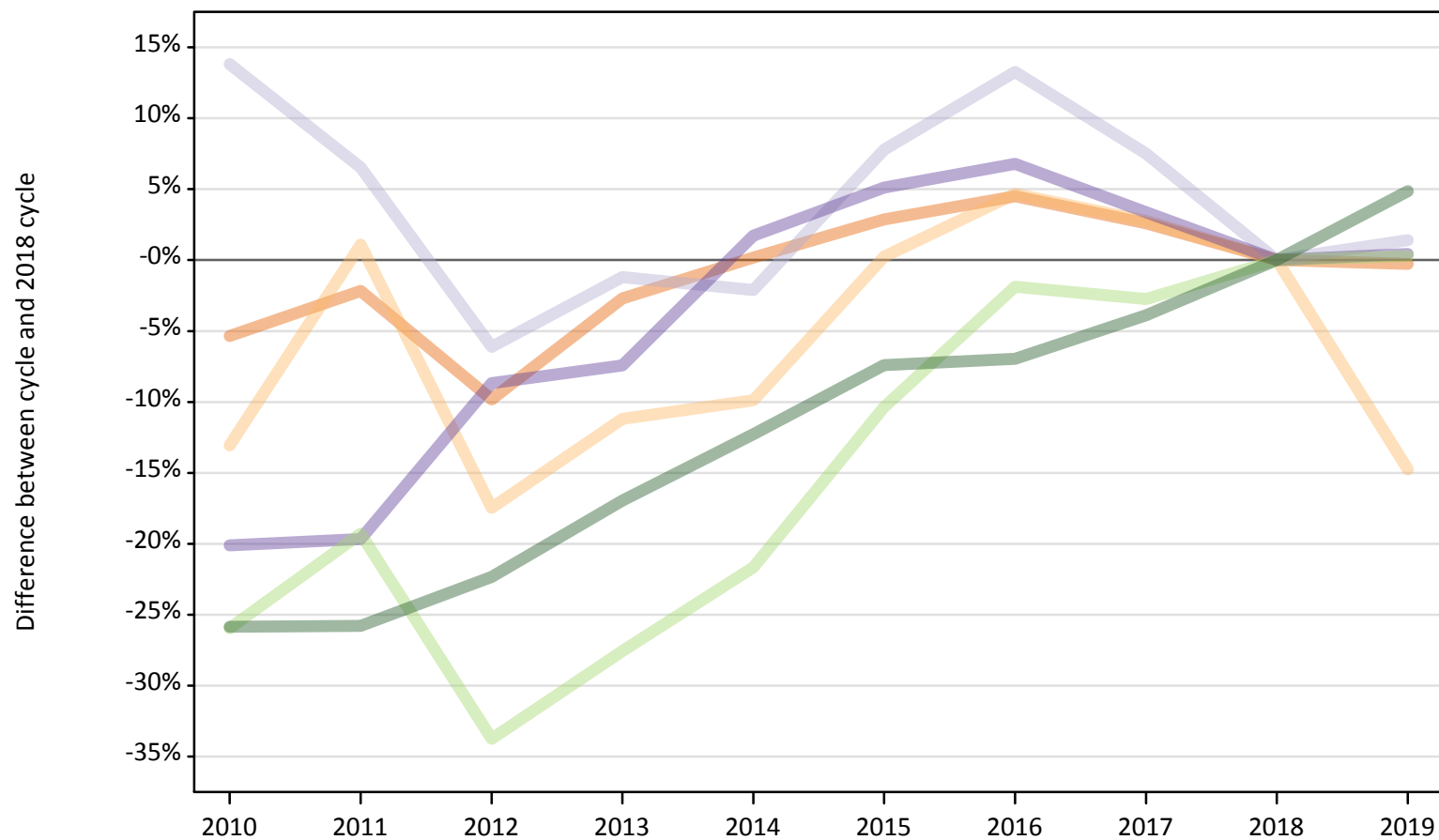
B.3 Placed applicants by country of provider



B.4 Placed applicants at 5 days after A level results day: providers in England

Selected applicant domiciles: difference between cycle and 2018 cycle (at 5 days after A level results day)

- England
- Northern Ireland
- Scotland
- Wales
- EU (excluding UK)
- Not EU



Note: The percentage change is not plotted in the above chart for groups with fewer than 30 placed applicants in any one cycle.

B.5 Placed applicants at 5 days after A level results day: providers in England

Placed applicants by domicile (at 5 days after A level results day)

Domicile of applicant	2010	2011	2012	2013	2014	2015	2016	2017	2018	2019
England	302,060	312,210	287,850	310,520	319,760	328,330	333,520	327,440	319,160	318,310
Northern Ireland	3,140	3,650	2,980	3,210	3,260	3,620	3,780	3,710	3,610	3,080
Scotland	1,620	1,520	1,340	1,410	1,400	1,540	1,610	1,530	1,430	1,450
Wales	6,020	6,050	6,880	6,970	7,660	7,920	8,050	7,790	7,530	7,570
EU (excluding UK)	16,880	18,400	15,100	16,510	17,860	20,430	22,370	22,170	22,800	22,860
Not EU	22,720	22,740	23,800	25,440	26,880	28,370	28,510	29,450	30,640	32,130

B.6 Placed applicants at 5 days after A level results day: providers in England

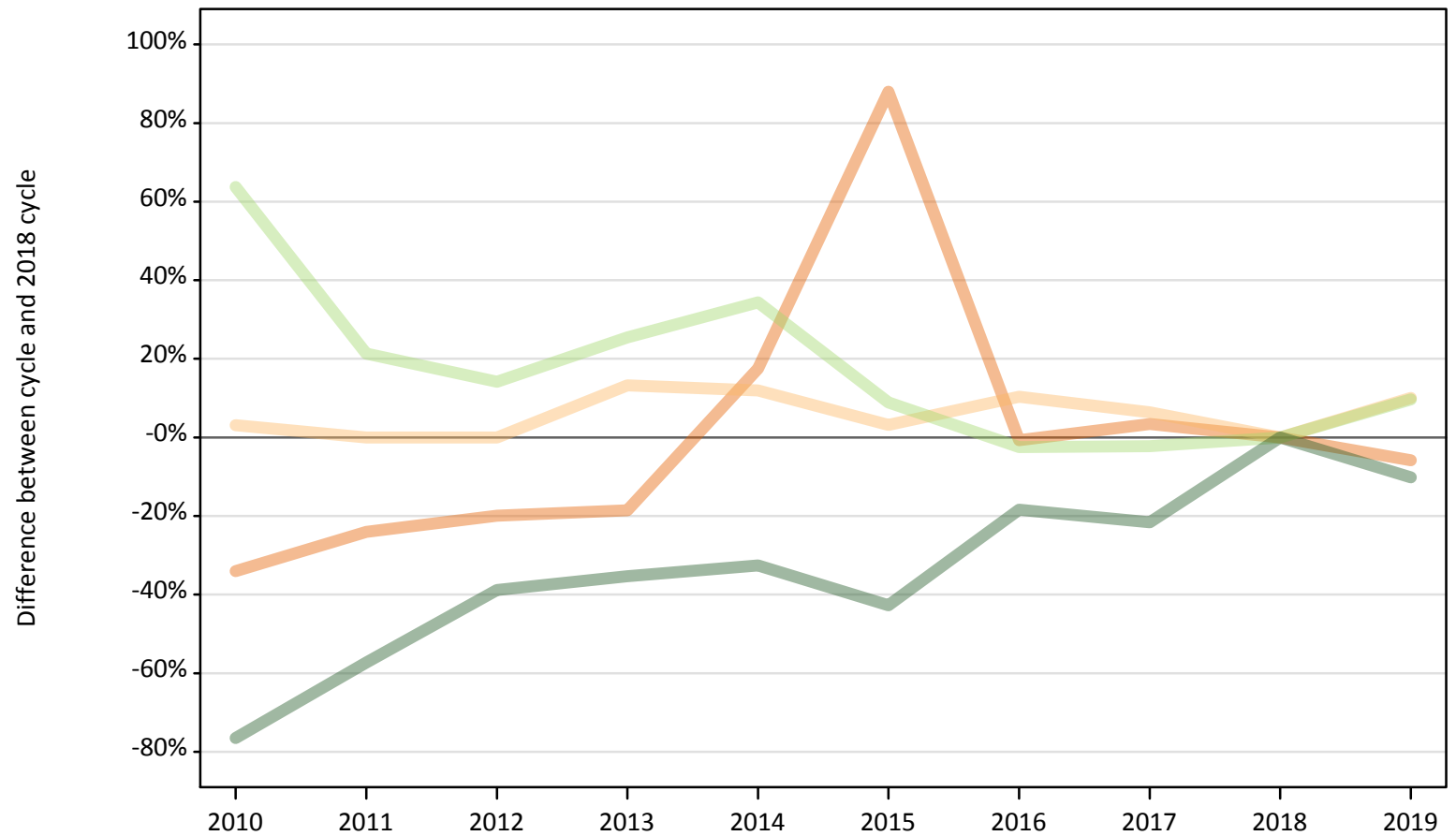
Selected applicant domiciles: difference between cycle and 2018 cycle (at 5 days after A level results day)

Domicile of applicant	2010	2011	2012	2013	2014	2015	2016	2017	2018	2019
England	-5%	-2%	-10%	-3%	0%	3%	4%	3%	0%	-0%
Northern Ireland	-13%	1%	-17%	-11%	-10%	0%	5%	3%	0%	-15%
Scotland	14%	7%	-6%	-1%	-2%	8%	13%	8%	0%	1%
Wales	-20%	-20%	-9%	-7%	2%	5%	7%	3%	0%	0%
EU (excluding UK)	-26%	-19%	-34%	-28%	-22%	-10%	-2%	-3%	0%	0%
Not EU	-26%	-26%	-22%	-17%	-12%	-7%	-7%	-4%	0%	5%

Note: The percentage change is not recorded in the above table for groups with fewer than 10 placed applicants in that cycle or in the 2018 cycle.

B.7 Placed applicants at 5 days after A level results day: providers in Northern Ireland
Selected applicant domiciles: difference between cycle and 2018 cycle (at 5 days after A level results day)

- England
- Northern Ireland
- Scotland
- Wales
- EU (excluding UK)
- Not EU



Note: The percentage change is not plotted in the above chart for groups with fewer than 30 placed applicants in any one cycle.

B.8 Placed applicants at 5 days after A level results day: providers in Northern Ireland

Placed applicants by domicile (at 5 days after A level results day)

Domicile of applicant	2010	2011	2012	2013	2014	2015	2016	2017	2018	2019
England	190	220	230	240	340	550	290	300	290	270
Northern Ireland	7,850	7,610	7,610	8,620	8,520	7,850	8,400	8,100	7,610	8,380
Scotland	20	20	30	10	20	20	20	30	30	20
Wales	10	10	0	0	10	10	10	10	10	10
EU (excluding UK)	590	440	410	450	490	390	350	350	360	400
Not EU	60	110	160	170	170	150	210	200	260	230

B.9 Placed applicants at 5 days after A level results day: providers in Northern Ireland

Selected applicant domiciles: difference between cycle and 2018 cycle (at 5 days after A level results day)

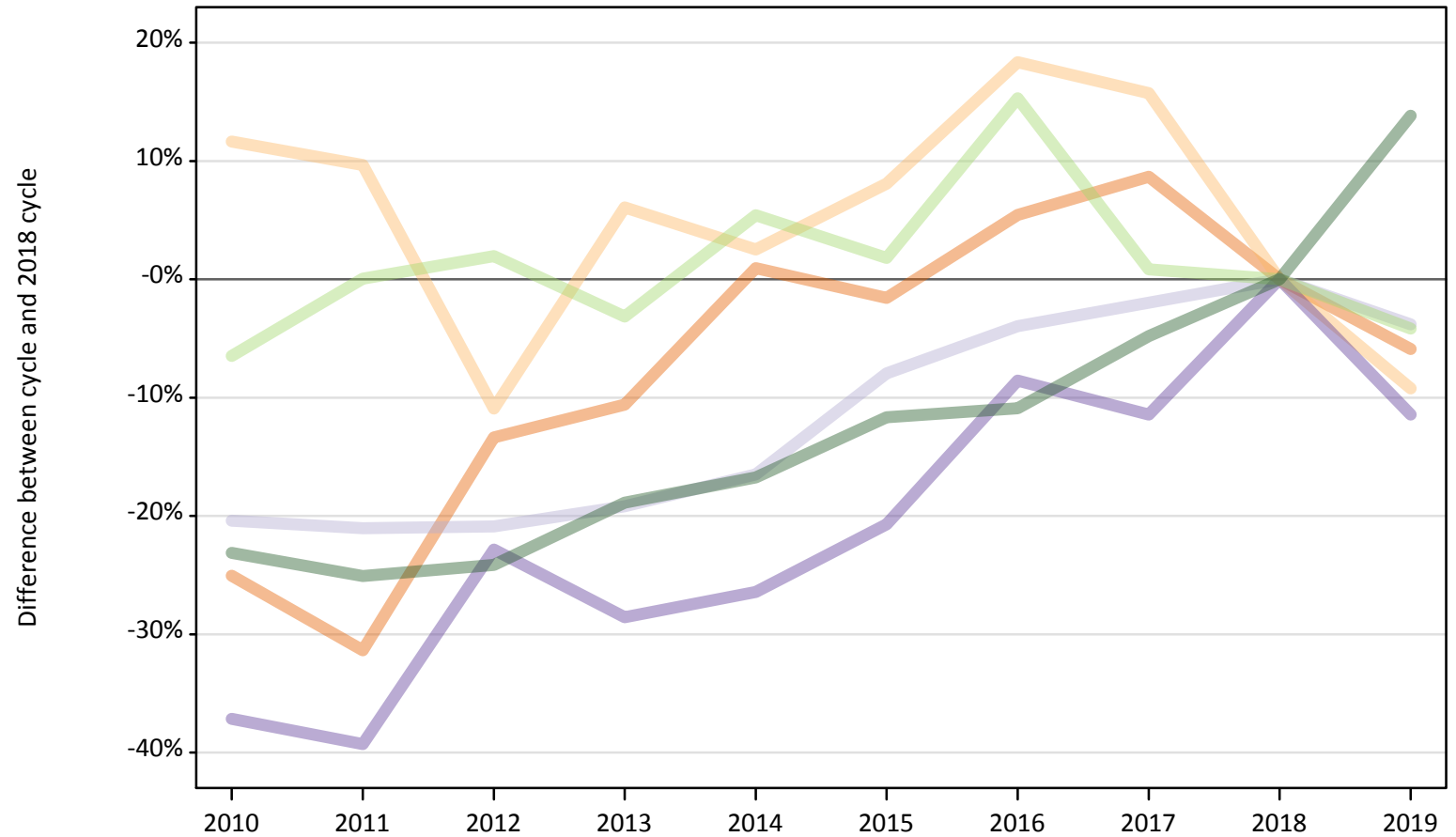
Domicile of applicant	2010	2011	2012	2013	2014	2015	2016	2017	2018	2019
England	-34%	-24%	-20%	-19%	18%	88%	-1%	3%	0%	-6%
Northern Ireland	3%	-0%	-0%	13%	12%	3%	10%	6%	0%	10%
Scotland	-12%	-32%	8%	-52%	-36%	-32%	-36%	16%	0%	-28%
Wales						10%	0%	40%	0%	0%
EU (excluding UK)	64%	21%	14%	25%	34%	9%	-2%	-2%	0%	10%
Not EU	-76%	-57%	-39%	-35%	-33%	-43%	-18%	-22%	0%	-10%

Note: The percentage change is not recorded in the above table for groups with fewer than 10 placed applicants in that cycle or in the 2018 cycle.

B.10 Placed applicants at 5 days after A level results day: providers in Scotland

Selected applicant domiciles: difference between cycle and 2018 cycle (at 5 days after A level results day)

- England
- Northern Ireland
- Scotland
- Wales
- EU (excluding UK)
- Not EU



Note: The percentage change is not plotted in the above chart for groups with fewer than 30 placed applicants in any one cycle.

B.11 Placed applicants at 5 days after A level results day: providers in Scotland

Placed applicants by domicile (at 5 days after A level results day)

Domicile of applicant	2010	2011	2012	2013	2014	2015	2016	2017	2018	2019
England	3,410	3,130	3,950	4,070	4,600	4,480	4,800	4,950	4,550	4,290
Northern Ireland	1,060	1,050	850	1,010	980	1,030	1,130	1,100	950	870
Scotland	25,760	25,560	25,610	26,160	27,030	29,790	31,090	31,730	32,370	31,140
Wales	90	90	110	100	100	110	130	120	140	120
EU (excluding UK)	3,710	3,970	4,040	3,840	4,180	4,040	4,570	4,000	3,970	3,800
Not EU	2,200	2,140	2,170	2,320	2,380	2,520	2,540	2,720	2,860	3,250

B.12 Placed applicants at 5 days after A level results day: providers in Scotland

Selected applicant domiciles: difference between cycle and 2018 cycle (at 5 days after A level results day)

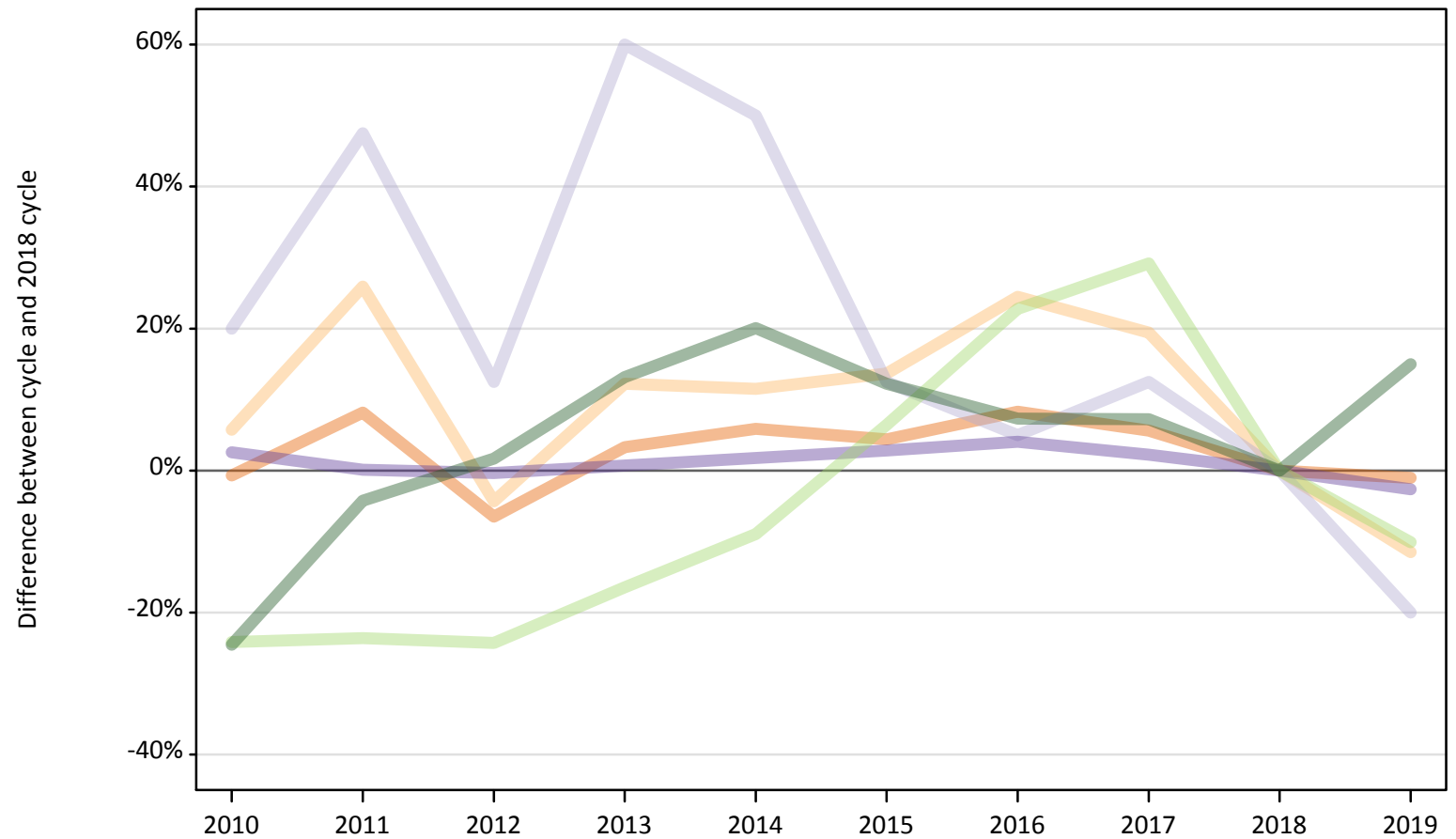
Domicile of applicant	2010	2011	2012	2013	2014	2015	2016	2017	2018	2019
England	-25%	-31%	-13%	-11%	1%	-2%	5%	9%	0%	-6%
Northern Ireland	12%	10%	-11%	6%	3%	8%	18%	16%	0%	-9%
Scotland	-20%	-21%	-21%	-19%	-16%	-8%	-4%	-2%	0%	-4%
Wales	-37%	-39%	-23%	-29%	-26%	-21%	-9%	-11%	0%	-11%
EU (excluding UK)	-6%	0%	2%	-3%	5%	2%	15%	1%	0%	-4%
Not EU	-23%	-25%	-24%	-19%	-17%	-12%	-11%	-5%	0%	14%

Note: The percentage change is not recorded in the above table for groups with fewer than 10 placed applicants in that cycle or in the 2018 cycle.

B.13 Placed applicants at 5 days after A level results day: providers in Wales

Selected applicant domiciles: difference between cycle and 2018 cycle (at 5 days after A level results day)

- England
- Northern Ireland
- Scotland
- Wales
- EU (excluding UK)
- Not EU



Note: The percentage change is not plotted in the above chart for groups with fewer than 30 placed applicants in any one cycle.

B.14 Placed applicants at 5 days after A level results day: providers in Wales

Placed applicants by domicile (at 5 days after A level results day)

Domicile of applicant	2010	2011	2012	2013	2014	2015	2016	2017	2018	2019
England	9,540	10,390	8,980	9,920	10,170	10,030	10,400	10,150	9,610	9,510
Northern Ireland	150	180	130	160	160	160	170	170	140	120
Scotland	50	60	50	60	60	50	40	50	40	30
Wales	10,260	10,010	9,970	10,070	10,170	10,280	10,410	10,220	10,000	9,730
EU (excluding UK)	800	810	800	890	960	1,130	1,300	1,370	1,060	950
Not EU	710	900	960	1,070	1,130	1,060	1,010	1,010	940	1,080

B.15 Placed applicants at 5 days after A level results day: providers in Wales

Selected applicant domiciles: difference between cycle and 2018 cycle (at 5 days after A level results day)

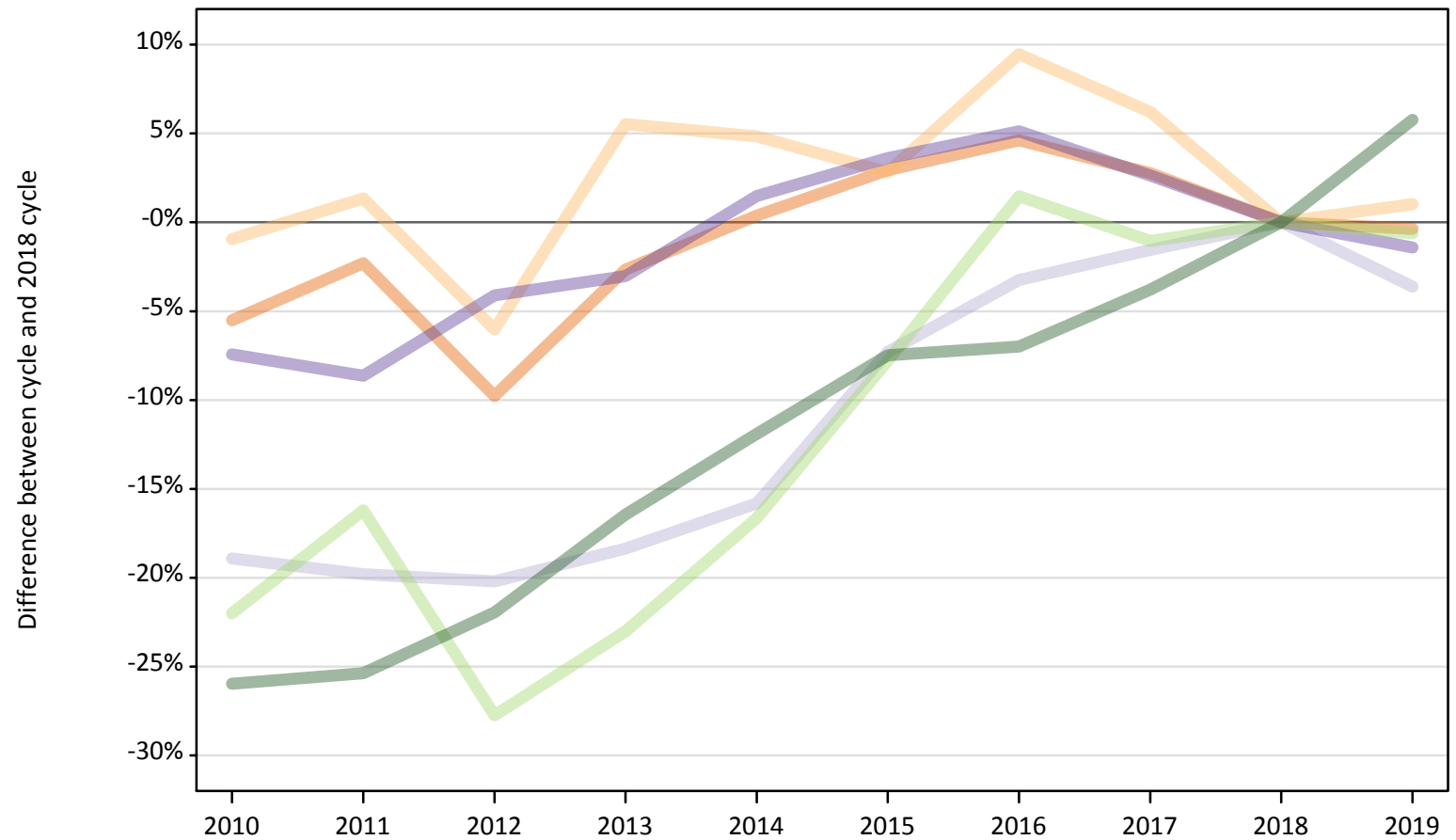
Domicile of applicant	2010	2011	2012	2013	2014	2015	2016	2017	2018	2019
England	-1%	8%	-6%	3%	6%	4%	8%	6%	0%	-1%
Northern Ireland	6%	26%	-4%	12%	12%	14%	24%	19%	0%	-12%
Scotland	20%	48%	13%	60%	50%	13%	5%	13%	0%	-20%
Wales	3%	0%	-0%	1%	2%	3%	4%	2%	0%	-3%
EU (excluding UK)	-24%	-24%	-24%	-16%	-9%	6%	23%	29%	0%	-10%
Not EU	-25%	-4%	2%	13%	20%	12%	7%	7%	0%	15%

Note: The percentage change is not recorded in the above table for groups with fewer than 10 placed applicants in that cycle or in the 2018 cycle.

B.16 Placed applicants at 5 days after A level results day: providers in the UK

Selected applicant domiciles: difference between cycle and 2018 cycle (at 5 days after A level results day)

- England
- Northern Ireland
- Scotland
- Wales
- EU (excluding UK)
- Not EU



Note: The percentage change is not plotted in the above chart for groups with fewer than 30 placed applicants in any one cycle.

B.17 Placed applicants at 5 days after A level results day: providers in the UK

Placed applicants by domicile (at 5 days after A level results day)

Domicile of applicant	2010	2011	2012	2013	2014	2015	2016	2017	2018	2019
England	315,200	325,950	301,010	324,750	334,870	343,390	349,010	342,840	333,610	332,380
Northern Ireland	12,200	12,480	11,570	13,000	12,910	12,660	13,480	13,080	12,320	12,440
Scotland	27,450	27,150	27,020	27,640	28,500	31,390	32,760	33,330	33,860	32,630
Wales	16,370	16,160	16,960	17,150	17,950	18,320	18,590	18,150	17,680	17,440
EU (excluding UK)	21,980	23,620	20,360	21,690	23,490	25,990	28,600	27,890	28,180	28,010
Not EU	25,690	25,890	27,080	28,990	30,560	32,100	32,270	33,380	34,690	36,690

B.18 Placed applicants at 5 days after A level results day: providers in the UK

Selected applicant domiciles: difference between cycle and 2018 cycle (at 5 days after A level results day)

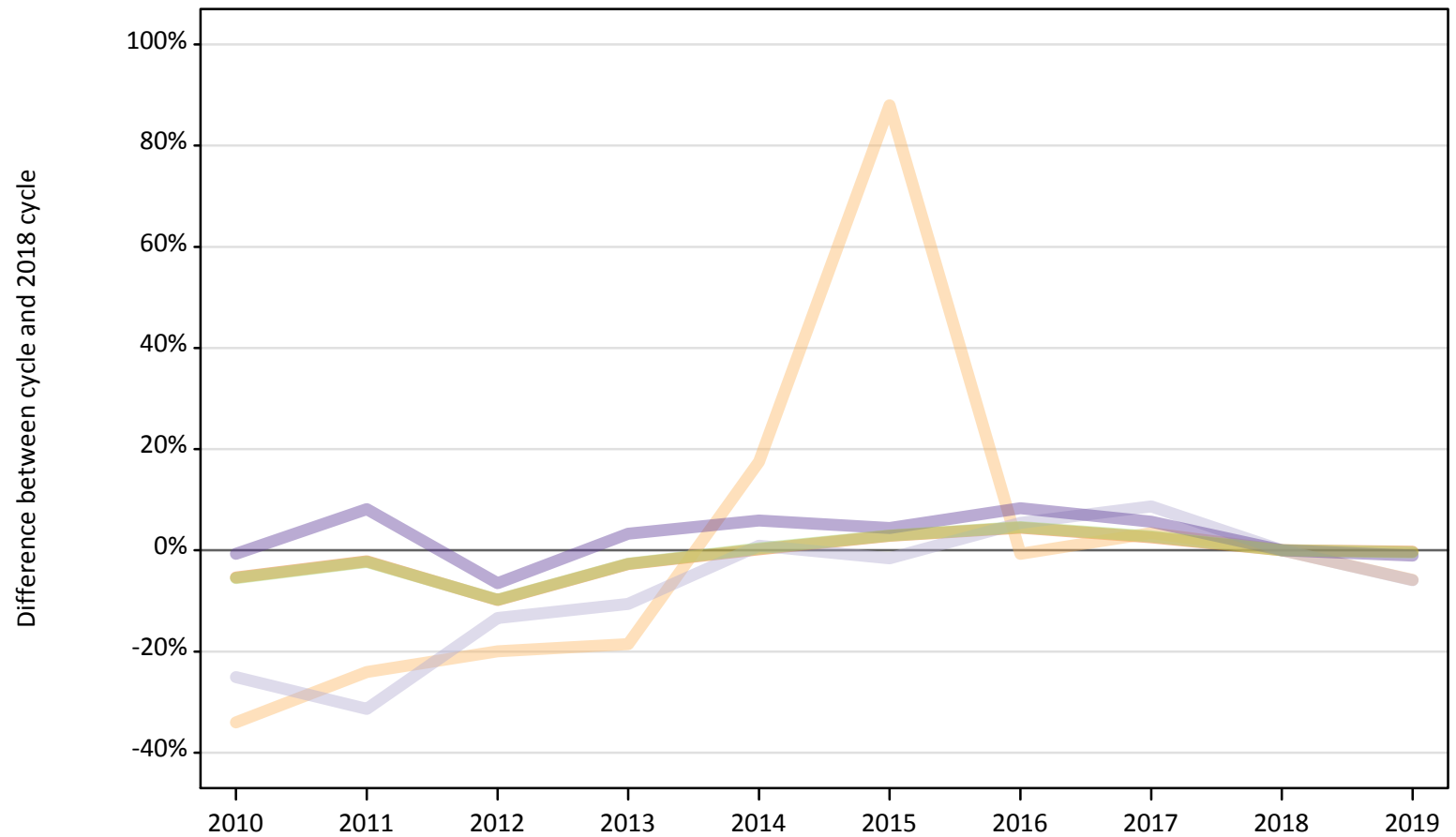
Domicile of applicant	2010	2011	2012	2013	2014	2015	2016	2017	2018	2019
England	-6%	-2%	-10%	-3%	0%	3%	5%	3%	0%	-0%
Northern Ireland	-1%	1%	-6%	6%	5%	3%	9%	6%	0%	1%
Scotland	-19%	-20%	-20%	-18%	-16%	-7%	-3%	-2%	0%	-4%
Wales	-7%	-9%	-4%	-3%	1%	4%	5%	3%	0%	-1%
EU (excluding UK)	-22%	-16%	-28%	-23%	-17%	-8%	1%	-1%	0%	-1%
Not EU	-26%	-25%	-22%	-16%	-12%	-7%	-7%	-4%	0%	6%

Note: The percentage change is not recorded in the above table for groups with fewer than 10 placed applicants in that cycle or in the 2018 cycle.

B.19 Placed applicants at 5 days after A level results day: domiciled in England

Selected provider countries: difference between cycle and 2018 cycle (at 5 days after A level results day)

- England
- Northern Ireland
- Scotland
- Wales
- UK



Note: The percentage change is not plotted in the above chart for groups with fewer than 30 placed applicants in any one cycle.

B.20 Placed applicants at 5 days after A level results day: domiciled in England

Placed applicants by provider country (at 5 days after A level results day)

Country of provider	2010	2011	2012	2013	2014	2015	2016	2017	2018	2019
England	302,060	312,210	287,850	310,520	319,760	328,330	333,520	327,440	319,160	318,310
Northern Ireland	190	220	230	240	340	550	290	300	290	270
Scotland	3,410	3,130	3,950	4,070	4,600	4,480	4,800	4,950	4,550	4,290
Wales	9,540	10,390	8,980	9,920	10,170	10,030	10,400	10,150	9,610	9,510
UK	315,200	325,950	301,010	324,750	334,870	343,390	349,010	342,840	333,610	332,380

B.21 Placed applicants at 5 days after A level results day: domiciled in England

Selected provider countries: difference between cycle and 2018 cycle (at 5 days after A level results day)

Country of provider	2010	2011	2012	2013	2014	2015	2016	2017	2018	2019
England	-5%	-2%	-10%	-3%	0%	3%	4%	3%	0%	-0%
Northern Ireland	-34%	-24%	-20%	-19%	18%	88%	-1%	3%	0%	-6%
Scotland	-25%	-31%	-13%	-11%	1%	-2%	5%	9%	0%	-6%
Wales	-1%	8%	-6%	3%	6%	4%	8%	6%	0%	-1%
UK	-6%	-2%	-10%	-3%	0%	3%	5%	3%	0%	-0%

Note: The percentage change is not recorded in the above table for groups with fewer than 10 placed applicants in that cycle or in the 2018 cycle.

B.22 Placed applicants at 5 days after A level results day: domiciled in Northern Ireland
Selected provider countries: difference between cycle and 2018 cycle (at 5 days after A level results day)

- England
- Northern Ireland
- Scotland
- Wales
- UK



Note: The percentage change is not plotted in the above chart for groups with fewer than 30 placed applicants in any one cycle.

B.23 Placed applicants at 5 days after A level results day: domiciled in Northern Ireland

Placed applicants by provider country (at 5 days after A level results day)

Country of provider	2010	2011	2012	2013	2014	2015	2016	2017	2018	2019
England	3,140	3,650	2,980	3,210	3,260	3,620	3,780	3,710	3,610	3,080
Northern Ireland	7,850	7,610	7,610	8,620	8,520	7,850	8,400	8,100	7,610	8,380
Scotland	1,060	1,050	850	1,010	980	1,030	1,130	1,100	950	870
Wales	150	180	130	160	160	160	170	170	140	120
UK	12,200	12,480	11,570	13,000	12,910	12,660	13,480	13,080	12,320	12,440

B.24 Placed applicants at 5 days after A level results day: domiciled in Northern Ireland

Selected provider countries: difference between cycle and 2018 cycle (at 5 days after A level results day)

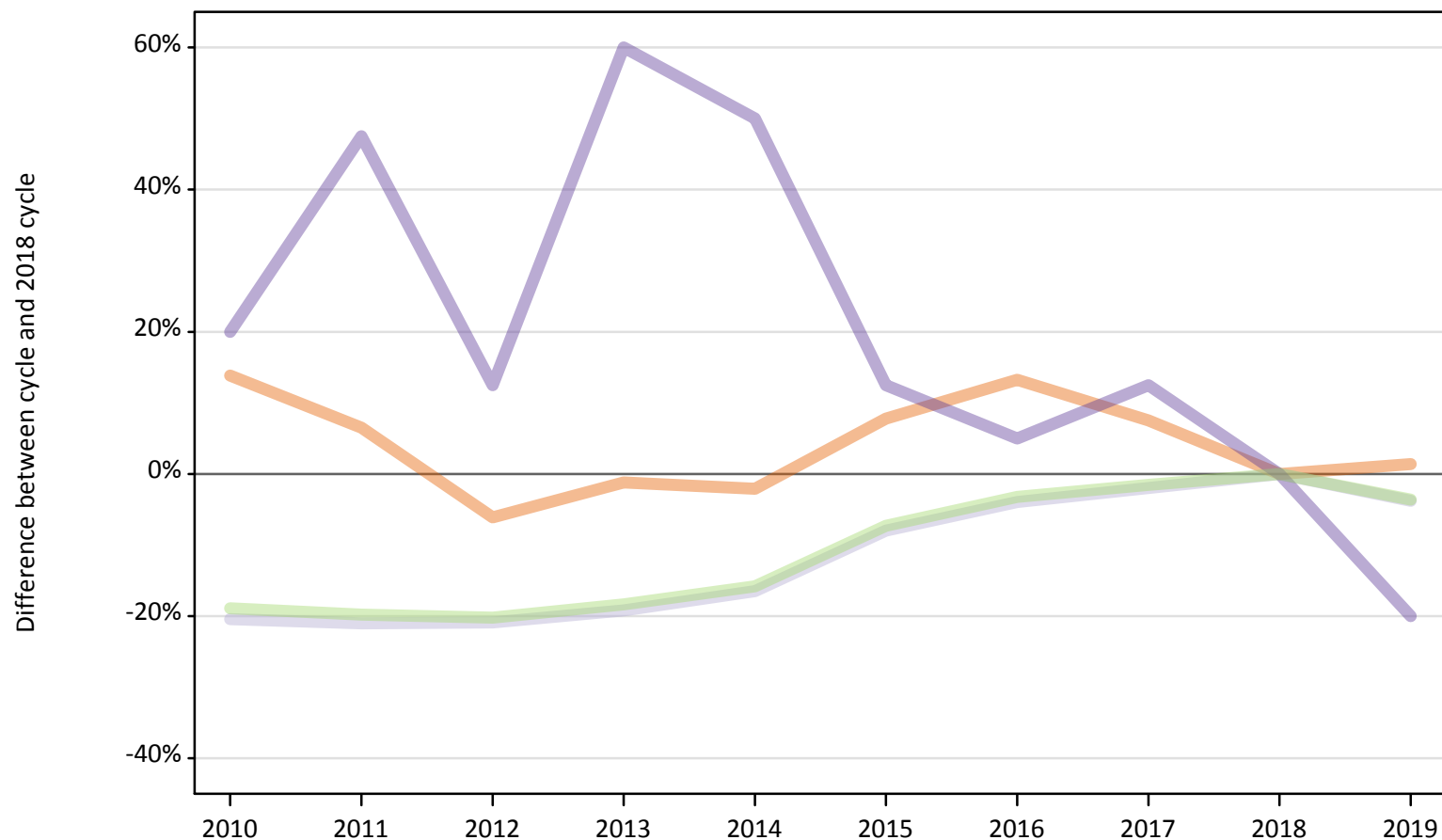
Country of provider	2010	2011	2012	2013	2014	2015	2016	2017	2018	2019
England	-13%	1%	-17%	-11%	-10%	0%	5%	3%	0%	-15%
Northern Ireland	3%	-0%	-0%	13%	12%	3%	10%	6%	0%	10%
Scotland	12%	10%	-11%	6%	3%	8%	18%	16%	0%	-9%
Wales	6%	26%	-4%	12%	12%	14%	24%	19%	0%	-12%
UK	-1%	1%	-6%	6%	5%	3%	9%	6%	0%	1%

Note: The percentage change is not recorded in the above table for groups with fewer than 10 placed applicants in that cycle or in the 2018 cycle.

B.25 Placed applicants at 5 days after A level results day: domiciled in Scotland

Selected provider countries: difference between cycle and 2018 cycle (at 5 days after A level results day)

- England
- Northern Ireland
- Scotland
- Wales
- UK



Note: The percentage change is not plotted in the above chart for groups with fewer than 30 placed applicants in any one cycle.

B.26 Placed applicants at 5 days after A level results day: domiciled in Scotland

Placed applicants by provider country (at 5 days after A level results day)

Country of provider	2010	2011	2012	2013	2014	2015	2016	2017	2018	2019
England	1,620	1,520	1,340	1,410	1,400	1,540	1,610	1,530	1,430	1,450
Northern Ireland	20	20	30	10	20	20	20	30	30	20
Scotland	25,760	25,560	25,610	26,160	27,030	29,790	31,090	31,730	32,370	31,140
Wales	50	60	50	60	60	50	40	50	40	30
UK	27,450	27,150	27,020	27,640	28,500	31,390	32,760	33,330	33,860	32,630

B.27 Placed applicants at 5 days after A level results day: domiciled in Scotland

Selected provider countries: difference between cycle and 2018 cycle (at 5 days after A level results day)

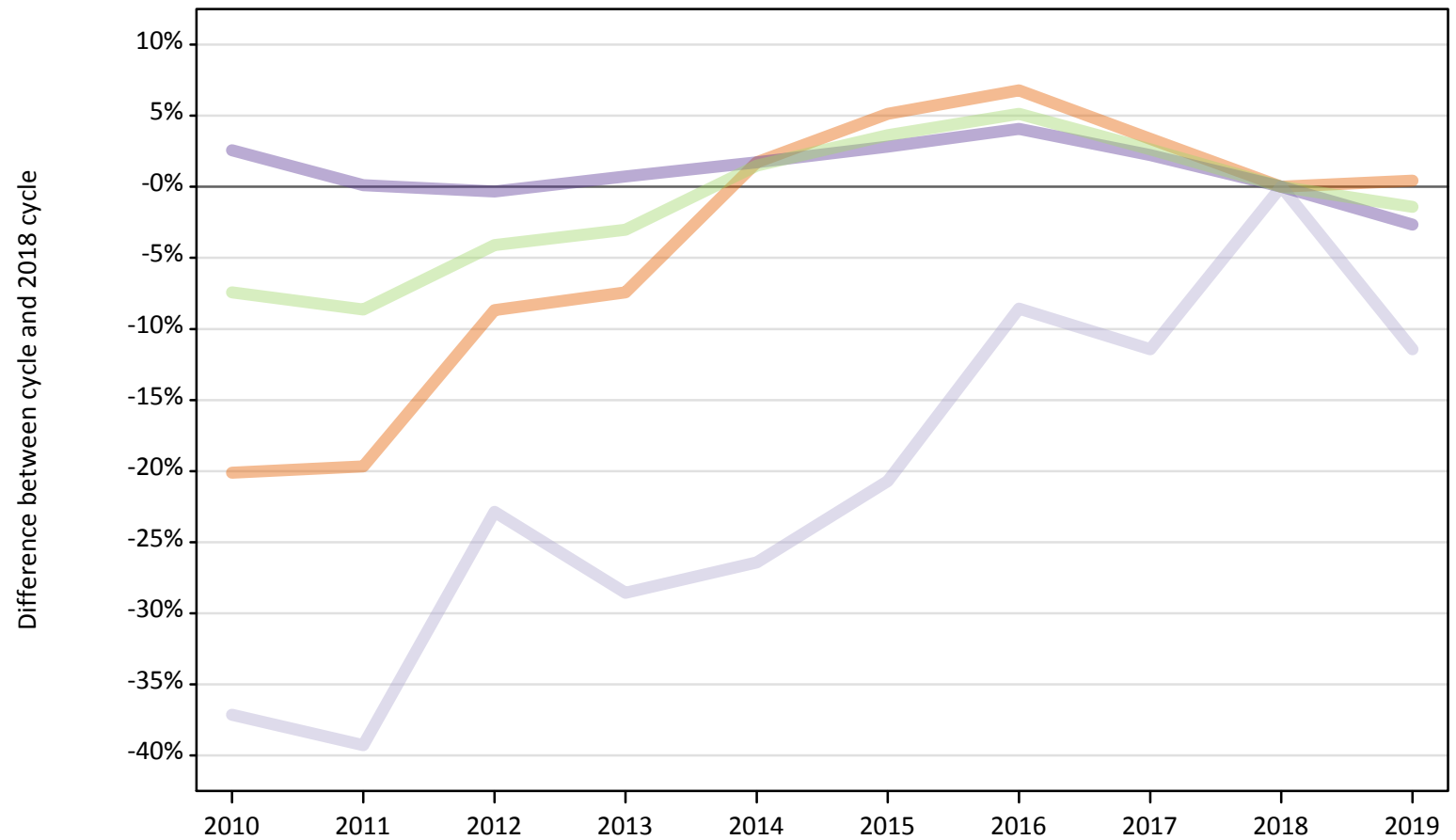
Country of provider	2010	2011	2012	2013	2014	2015	2016	2017	2018	2019
England	14%	7%	-6%	-1%	-2%	8%	13%	8%	0%	1%
Northern Ireland	-12%	-32%	8%	-52%	-36%	-32%	-36%	16%	0%	-28%
Scotland	-20%	-21%	-21%	-19%	-16%	-8%	-4%	-2%	0%	-4%
Wales	20%	48%	13%	60%	50%	13%	5%	13%	0%	-20%
UK	-19%	-20%	-20%	-18%	-16%	-7%	-3%	-2%	0%	-4%

Note: The percentage change is not recorded in the above table for groups with fewer than 10 placed applicants in that cycle or in the 2018 cycle.

B.28 Placed applicants at 5 days after A level results day: domiciled in Wales

Selected provider countries: difference between cycle and 2018 cycle (at 5 days after A level results day)

- England
- Northern Ireland
- Scotland
- Wales
- UK



Note: The percentage change is not plotted in the above chart for groups with fewer than 30 placed applicants in any one cycle.

B.29 Placed applicants at 5 days after A level results day: domiciled in Wales

Placed applicants by provider country (at 5 days after A level results day)

Country of provider	2010	2011	2012	2013	2014	2015	2016	2017	2018	2019
England	6,020	6,050	6,880	6,970	7,660	7,920	8,050	7,790	7,530	7,570
Northern Ireland	10	10	0	0	10	10	10	10	10	10
Scotland	90	90	110	100	100	110	130	120	140	120
Wales	10,260	10,010	9,970	10,070	10,170	10,280	10,410	10,220	10,000	9,730
UK	16,370	16,160	16,960	17,150	17,950	18,320	18,590	18,150	17,680	17,440

B.30 Placed applicants at 5 days after A level results day: domiciled in Wales

Selected provider countries: difference between cycle and 2018 cycle (at 5 days after A level results day)

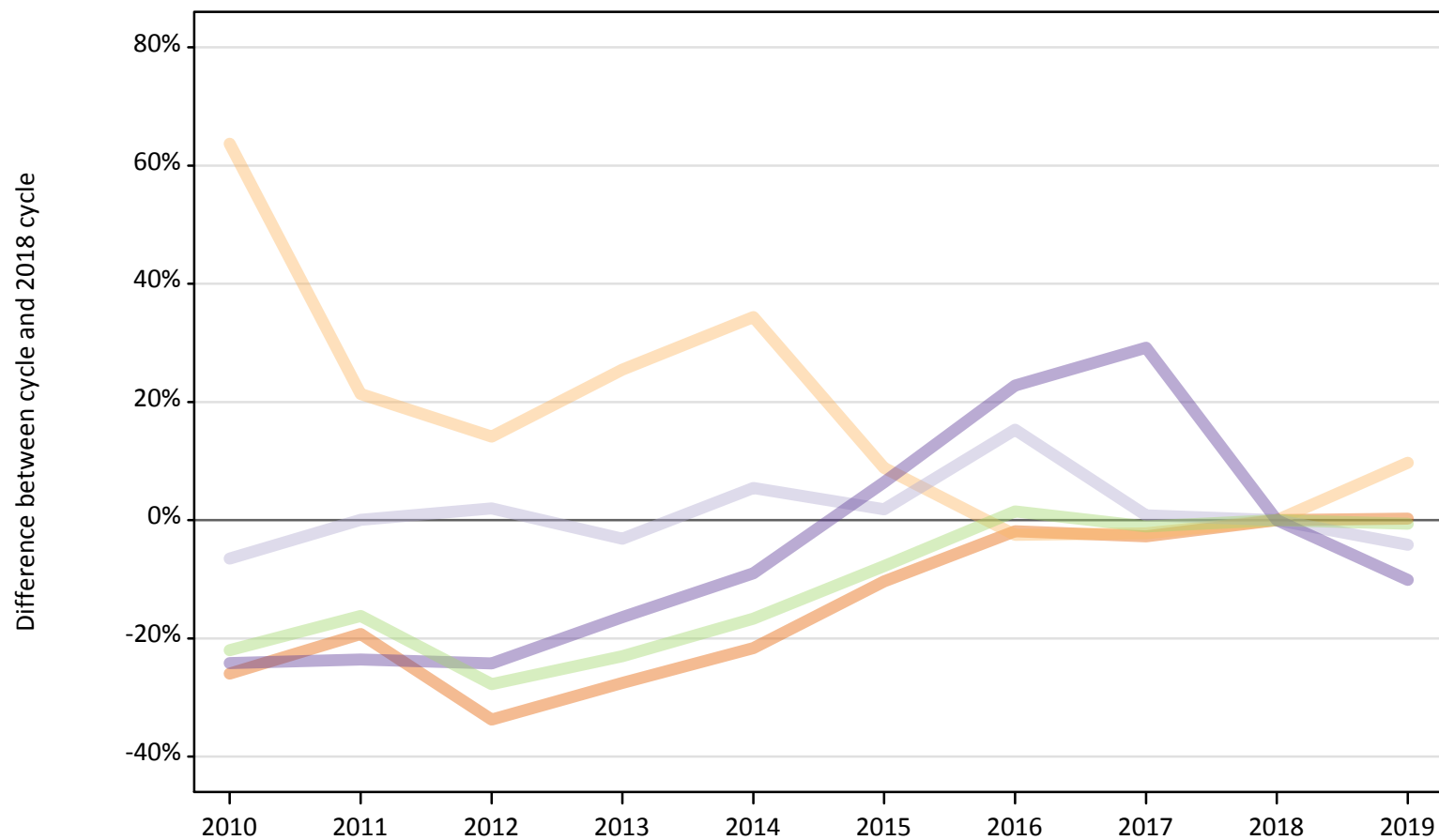
Country of provider	2010	2011	2012	2013	2014	2015	2016	2017	2018	2019
England	-20%	-20%	-9%	-7%	2%	5%	7%	3%	0%	0%
Northern Ireland						10%	0%	40%	0%	0%
Scotland	-37%	-39%	-23%	-29%	-26%	-21%	-9%	-11%	0%	-11%
Wales	3%	0%	-0%	1%	2%	3%	4%	2%	0%	-3%
UK	-7%	-9%	-4%	-3%	1%	4%	5%	3%	0%	-1%

Note: The percentage change is not recorded in the above table for groups with fewer than 10 placed applicants in that cycle or in the 2018 cycle.

B.31 Placed applicants at 5 days after A level results day: domiciled in EU (excluding UK)

Selected provider countries: difference between cycle and 2018 cycle (at 5 days after A level results day)

- England
- Northern Ireland
- Scotland
- Wales
- UK



Note: The percentage change is not plotted in the above chart for groups with fewer than 30 placed applicants in any one cycle.

B.32 Placed applicants at 5 days after A level results day: domiciled in EU (excluding UK)

Placed applicants by provider country (at 5 days after A level results day)

Country of provider	2010	2011	2012	2013	2014	2015	2016	2017	2018	2019
England	16,880	18,400	15,100	16,510	17,860	20,430	22,370	22,170	22,800	22,860
Northern Ireland	590	440	410	450	490	390	350	350	360	400
Scotland	3,710	3,970	4,040	3,840	4,180	4,040	4,570	4,000	3,970	3,800
Wales	800	810	800	890	960	1,130	1,300	1,370	1,060	950
UK	21,980	23,620	20,360	21,690	23,490	25,990	28,600	27,890	28,180	28,010

B.33 Placed applicants at 5 days after A level results day: domiciled in EU (excluding UK)

Selected provider countries: difference between cycle and 2018 cycle (at 5 days after A level results day)

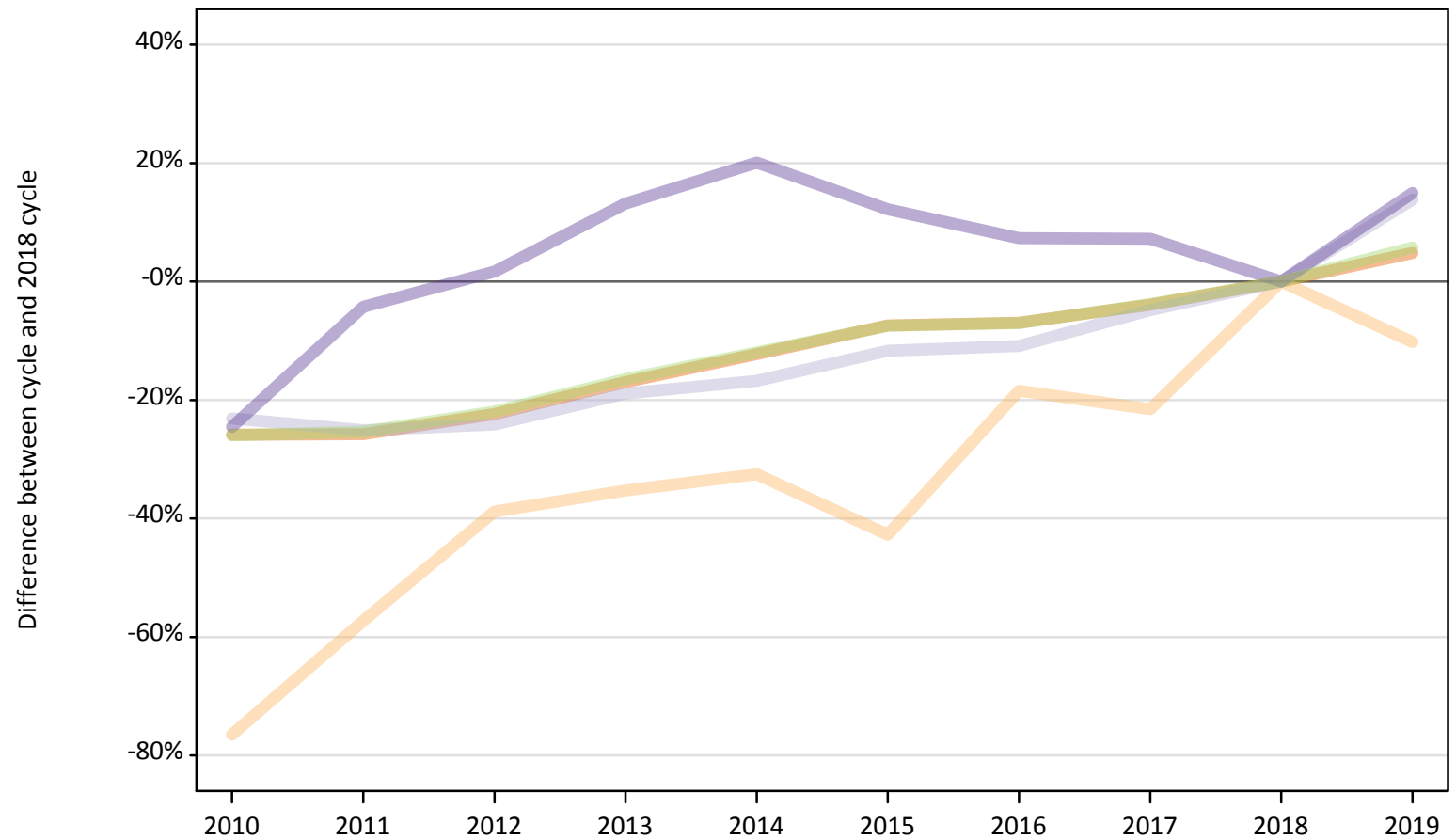
Country of provider	2010	2011	2012	2013	2014	2015	2016	2017	2018	2019
England	-26%	-19%	-34%	-28%	-22%	-10%	-2%	-3%	0%	0%
Northern Ireland	64%	21%	14%	25%	34%	9%	-2%	-2%	0%	10%
Scotland	-6%	0%	2%	-3%	5%	2%	15%	1%	0%	-4%
Wales	-24%	-24%	-24%	-16%	-9%	6%	23%	29%	0%	-10%
UK	-22%	-16%	-28%	-23%	-17%	-8%	1%	-1%	0%	-1%

Note: The percentage change is not recorded in the above table for groups with fewer than 10 placed applicants in that cycle or in the 2018 cycle.

B.34 Placed applicants at 5 days after A level results day: domiciled in Not EU

Selected provider countries: difference between cycle and 2018 cycle (at 5 days after A level results day)

- England
- Northern Ireland
- Scotland
- Wales
- UK



Note: The percentage change is not plotted in the above chart for groups with fewer than 30 placed applicants in any one cycle.

B.35 Placed applicants at 5 days after A level results day: domiciled in Not EU

Placed applicants by provider country (at 5 days after A level results day)

Country of provider	2010	2011	2012	2013	2014	2015	2016	2017	2018	2019
England	22,720	22,740	23,800	25,440	26,880	28,370	28,510	29,450	30,640	32,130
Northern Ireland	60	110	160	170	170	150	210	200	260	230
Scotland	2,200	2,140	2,170	2,320	2,380	2,520	2,540	2,720	2,860	3,250
Wales	710	900	960	1,070	1,130	1,060	1,010	1,010	940	1,080
UK	25,690	25,890	27,080	28,990	30,560	32,100	32,270	33,380	34,690	36,690

B.36 Placed applicants at 5 days after A level results day: domiciled in Not EU

Selected provider countries: difference between cycle and 2018 cycle (at 5 days after A level results day)

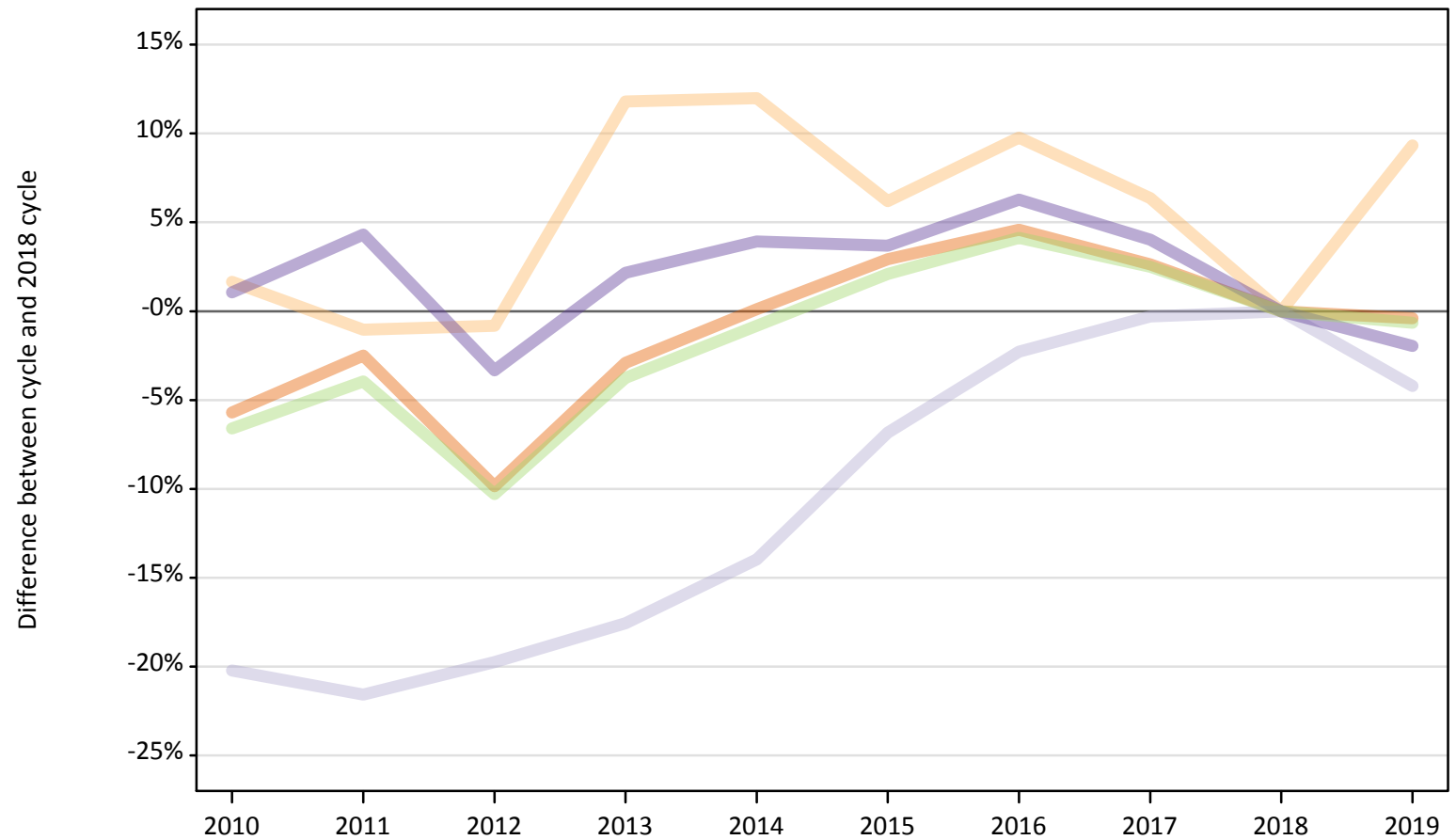
Country of provider	2010	2011	2012	2013	2014	2015	2016	2017	2018	2019
England	-26%	-26%	-22%	-17%	-12%	-7%	-7%	-4%	0%	5%
Northern Ireland	-76%	-57%	-39%	-35%	-33%	-43%	-18%	-22%	0%	-10%
Scotland	-23%	-25%	-24%	-19%	-17%	-12%	-11%	-5%	0%	14%
Wales	-25%	-4%	2%	13%	20%	12%	7%	7%	0%	15%
UK	-26%	-25%	-22%	-16%	-12%	-7%	-7%	-4%	0%	6%

Note: The percentage change is not recorded in the above table for groups with fewer than 10 placed applicants in that cycle or in the 2018 cycle.

B.37 Placed applicants at 5 days after A level results day: domiciled in UK

Selected provider countries: difference between cycle and 2018 cycle (at 5 days after A level results day)

- England
- Northern Ireland
- Scotland
- Wales
- UK



Note: The percentage change is not plotted in the above chart for groups with fewer than 30 placed applicants in any one cycle.

B.38 Placed applicants at 5 days after A level results day: domiciled in UK

Placed applicants by provider country (at 5 days after A level results day)

Country of provider	2010	2011	2012	2013	2014	2015	2016	2017	2018	2019
England	312,840	323,430	299,050	322,110	332,070	341,410	346,960	340,480	331,730	330,410
Northern Ireland	8,070	7,860	7,870	8,880	8,890	8,430	8,710	8,440	7,940	8,680
Scotland	30,330	29,820	30,510	31,340	32,710	35,410	37,150	37,900	38,020	36,410
Wales	19,990	20,640	19,130	20,210	20,560	20,510	21,030	20,580	19,780	19,400
UK	371,230	381,740	356,560	382,540	394,220	405,760	413,840	407,400	397,470	394,890

B.39 Placed applicants at 5 days after A level results day: domiciled in UK

Selected provider countries: difference between cycle and 2018 cycle (at 5 days after A level results day)

Country of provider	2010	2011	2012	2013	2014	2015	2016	2017	2018	2019
England	-6%	-3%	-10%	-3%	0%	3%	5%	3%	0%	-0%
Northern Ireland	2%	-1%	-1%	12%	12%	6%	10%	6%	0%	9%
Scotland	-20%	-22%	-20%	-18%	-14%	-7%	-2%	-0%	0%	-4%
Wales	1%	4%	-3%	2%	4%	4%	6%	4%	0%	-2%
UK	-7%	-4%	-10%	-4%	-1%	2%	4%	2%	0%	-1%

Note: The percentage change is not recorded in the above table for groups with fewer than 10 placed applicants in that cycle or in the 2018 cycle.