

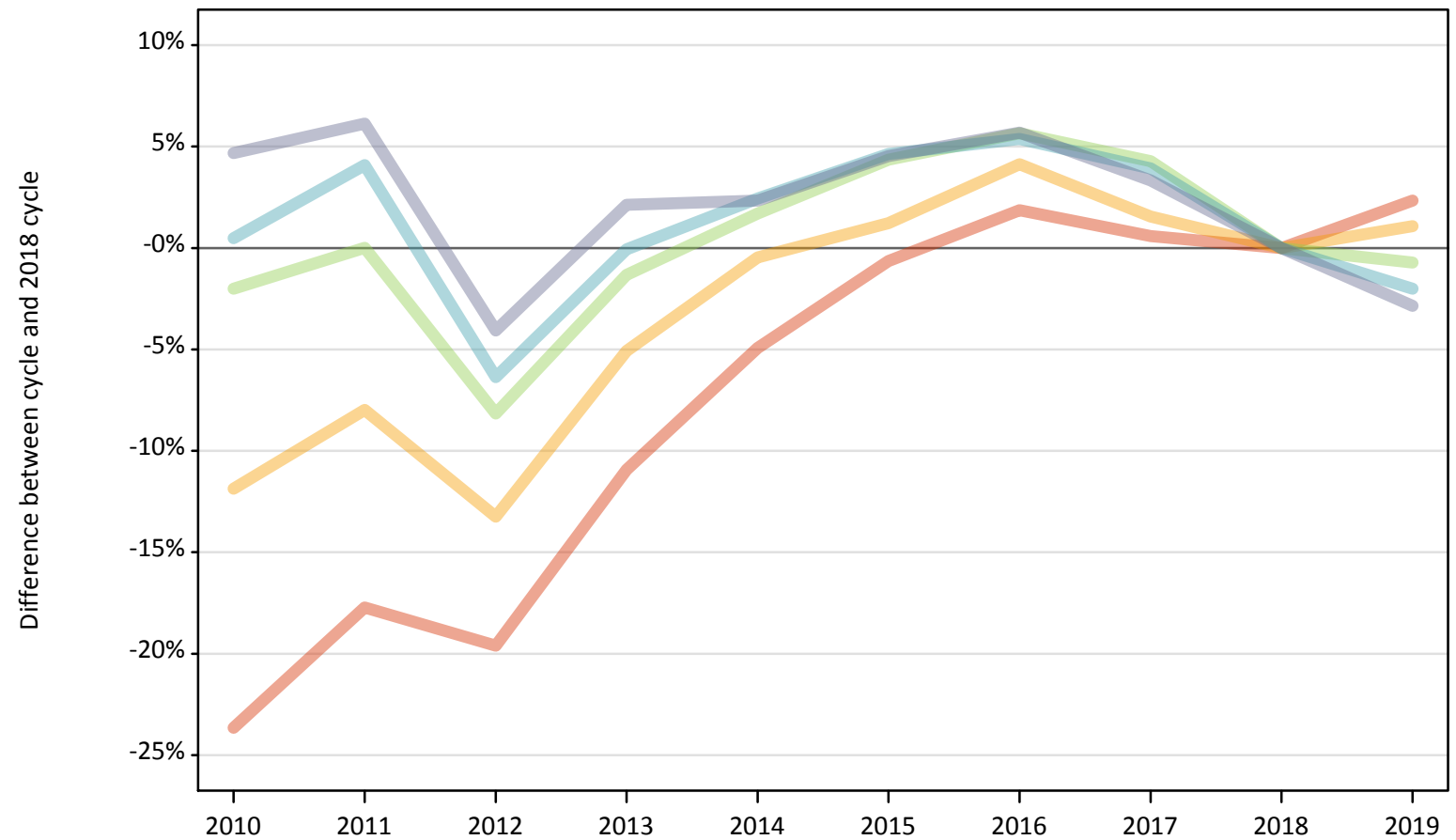
Daily Clearing Analysis: IMD2015

Analysis at 00:05 on Tuesday 20 August 2019 (5 days after A level results day)

J.1 Placed applicants from England by IMD2015 quintile: 5 days after A level results day

Placed applicants: change relative to 2018 cycle totals

- Quintile 1
- Quintile 2
- Quintile 3
- Quintile 4
- Quintile 5



Note: The percentage change is not plotted in the above chart for groups with fewer than 30 placed applicants in any one cycle.

J.2 Placed applicants from England by IMD2015 quintile: 5 days after A level results day

Applicant Status IMD2015		2010	2011	2012	2013	2014	2015	2016	2017	2018	2019
Placed	Quintile 1	46,520	50,130	48,990	54,270	57,940	60,540	62,070	61,290	60,930	62,360
	Quintile 2	52,920	55,260	52,090	57,000	59,770	60,790	62,530	60,980	60,050	60,700
	Quintile 3	60,870	62,120	57,050	61,300	63,180	64,820	65,630	64,780	62,120	61,670
	Quintile 4	68,920	71,400	64,220	68,550	70,260	71,770	72,280	71,290	68,590	67,210
	Quintile 5	85,020	86,200	77,910	82,950	83,110	84,900	85,840	83,930	81,220	78,900

J.3 Placed applicants from England by IMD2015 quintile: 5 days after A level results day

Placed applicants: change relative to 2018 cycle totals

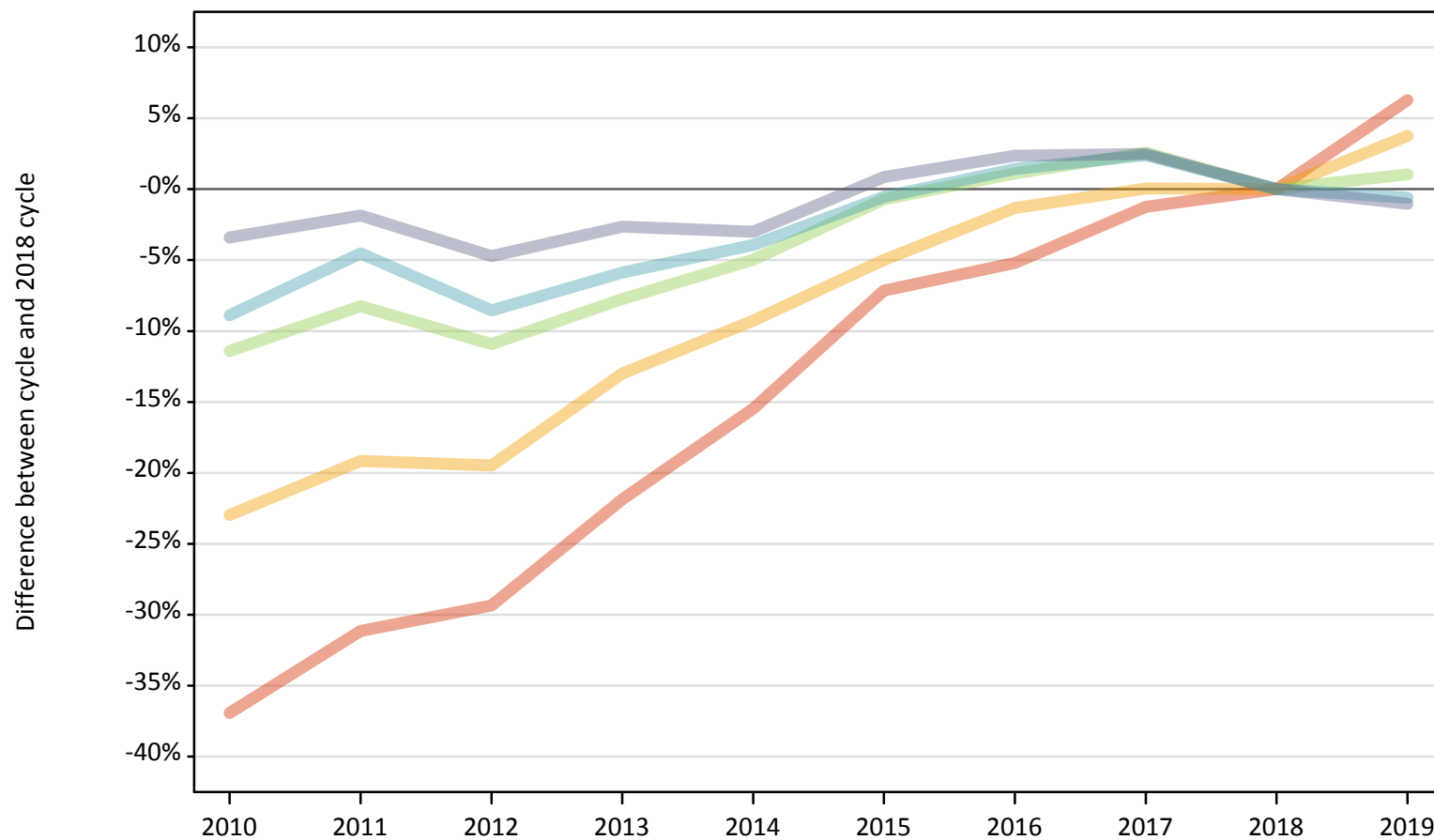
Applicant Status IMD2015		2010	2011	2012	2013	2014	2015	2016	2017	2018	2019
Placed	Quintile 1	-24%	-18%	-20%	-11%	-5%	-1%	2%	1%	0%	2%
	Quintile 2	-12%	-8%	-13%	-5%	-0%	1%	4%	2%	0%	1%
	Quintile 3	-2%	0%	-8%	-1%	2%	4%	6%	4%	0%	-1%
	Quintile 4	0%	4%	-6%	-0%	2%	5%	5%	4%	0%	-2%
	Quintile 5	5%	6%	-4%	2%	2%	5%	6%	3%	0%	-3%

Note: The percentage change is not recorded in the above table for groups with fewer than 10 placed applicants in that cycle or in the 2018 cycle.

J.4 Placed 18 year old applicants from England by IMD2015 quintile: 5 days after A level results day

Placed 18 year old applicants: change relative to 2018 cycle totals

- Quintile 1
- Quintile 2
- Quintile 3
- Quintile 4
- Quintile 5



Note: The percentage change is not plotted in the above chart for groups with fewer than 30 placed applicants in any one cycle.

J.5 Placed 18 year old applicants from England by IMD2015 quintile: 5 days after A level results day

Applicant Status IMD2015		2010	2011	2012	2013	2014	2015	2016	2017	2018	2019
Placed	Quintile 1	18,700	20,410	20,940	23,160	25,050	27,520	28,100	29,280	29,640	31,500
	Quintile 2	24,570	25,790	25,690	27,760	28,950	30,310	31,480	31,920	31,900	33,100
	Quintile 3	32,250	33,400	32,430	33,590	34,590	36,140	36,810	37,340	36,400	36,780
	Quintile 4	39,580	41,470	39,730	40,890	41,740	43,200	44,060	44,480	43,440	43,180
	Quintile 5	53,650	54,520	52,930	54,080	53,880	56,020	56,850	56,930	55,540	54,970

J.6 Placed 18 year old applicants from England by IMD2015 quintile: 5 days after A level results day

Placed 18 year old applicants: change relative to 2018 cycle totals

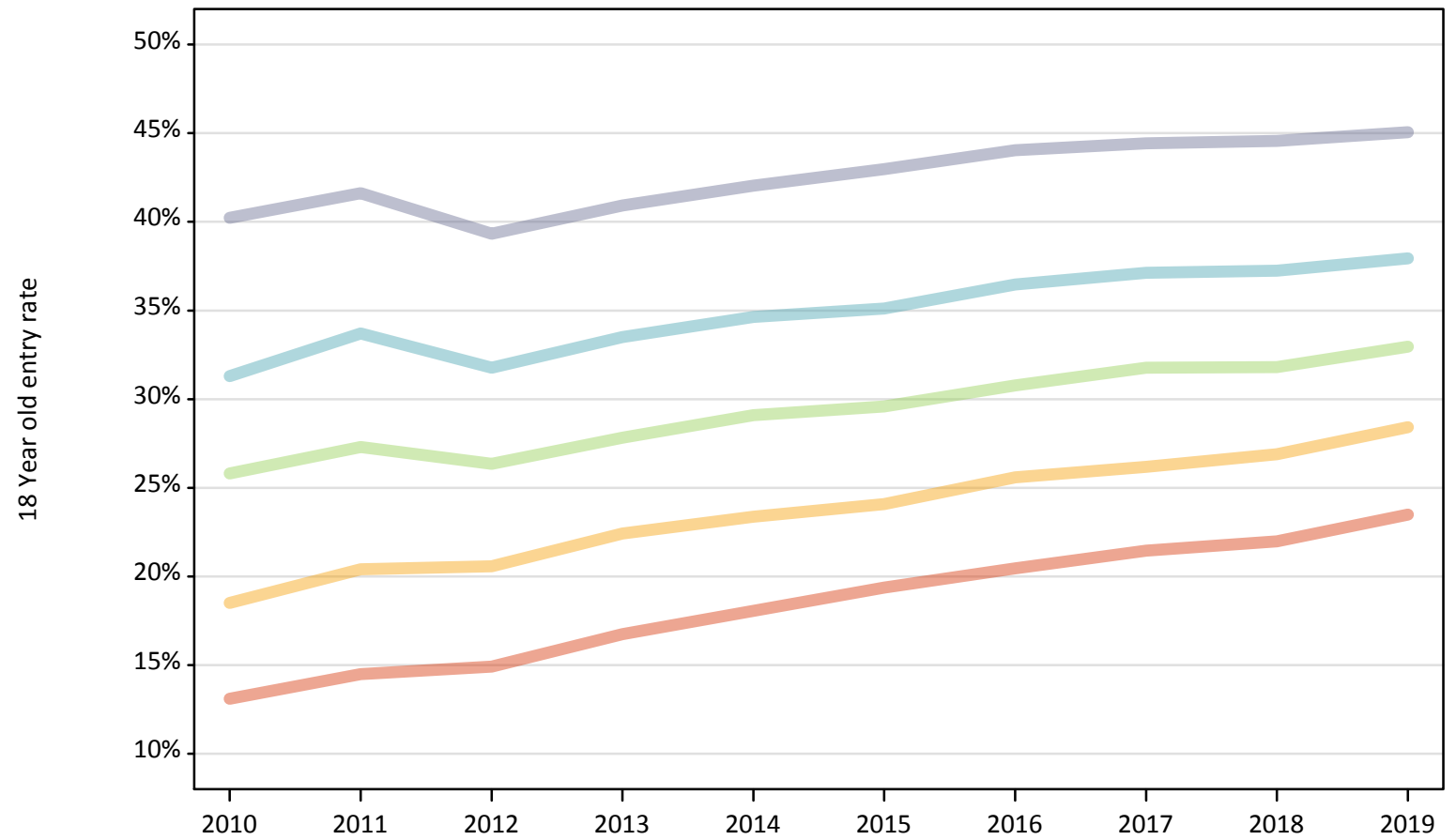
Applicant Status IMD2015		2010	2011	2012	2013	2014	2015	2016	2017	2018	2019
Placed	Quintile 1	-37%	-31%	-29%	-22%	-15%	-7%	-5%	-1%	0%	6%
	Quintile 2	-23%	-19%	-19%	-13%	-9%	-5%	-1%	0%	0%	4%
	Quintile 3	-11%	-8%	-11%	-8%	-5%	-1%	1%	3%	0%	1%
	Quintile 4	-9%	-5%	-9%	-6%	-4%	-1%	1%	2%	0%	-1%
	Quintile 5	-3%	-2%	-5%	-3%	-3%	1%	2%	2%	0%	-1%

Note: The percentage change is not recorded in the above table for groups with fewer than 10 placed applicants in that cycle or in the 2018 cycle.

J.7 Placed 18 year old applicants from England by IMD2015 quintile: 5 days after A level results day

Placed 18 year old applicants: entry rate

- Quintile 1
- Quintile 2
- Quintile 3
- Quintile 4
- Quintile 5



J.8 Placed 18 year old applicants from England by IMD2015 quintile: 5 days after A level results day

Placed 18 year old applicants: entry rate

Applicant Status	IMD2015	2010	2011	2012	2013	2014	2015	2016	2017	2018	2019
Placed	Quintile 1	13.1%	14.5%	14.9%	16.7%	18.1%	19.4%	20.5%	21.5%	22.0%	23.5%
	Quintile 2	18.5%	20.4%	20.6%	22.4%	23.4%	24.1%	25.6%	26.2%	26.9%	28.4%
	Quintile 3	25.8%	27.3%	26.4%	27.8%	29.1%	29.6%	30.8%	31.8%	31.8%	33.0%
	Quintile 4	31.3%	33.7%	31.8%	33.5%	34.6%	35.1%	36.5%	37.1%	37.3%	37.9%
	Quintile 5	40.2%	41.6%	39.3%	40.9%	42.0%	43.0%	44.0%	44.4%	44.6%	45.1%

J.9 Placed 18 year old applicants from England by IMD2015 quintile: 5 days after A level results day

Placed 18 year old applicants: entry rate (indexed to 100 = Quintile 1)

Applicant Status	IMD2015	2010	2011	2012	2013	2014	2015	2016	2017	2018	2019
Placed	Quintile 1	100	100	100	100	100	100	100	100	100	100
	Quintile 2	141	141	138	134	129	124	125	122	122	121
	Quintile 3	197	188	177	166	161	153	150	148	145	140
	Quintile 4	239	233	213	200	192	181	178	173	169	162
	Quintile 5	307	287	264	244	233	222	215	207	203	192