

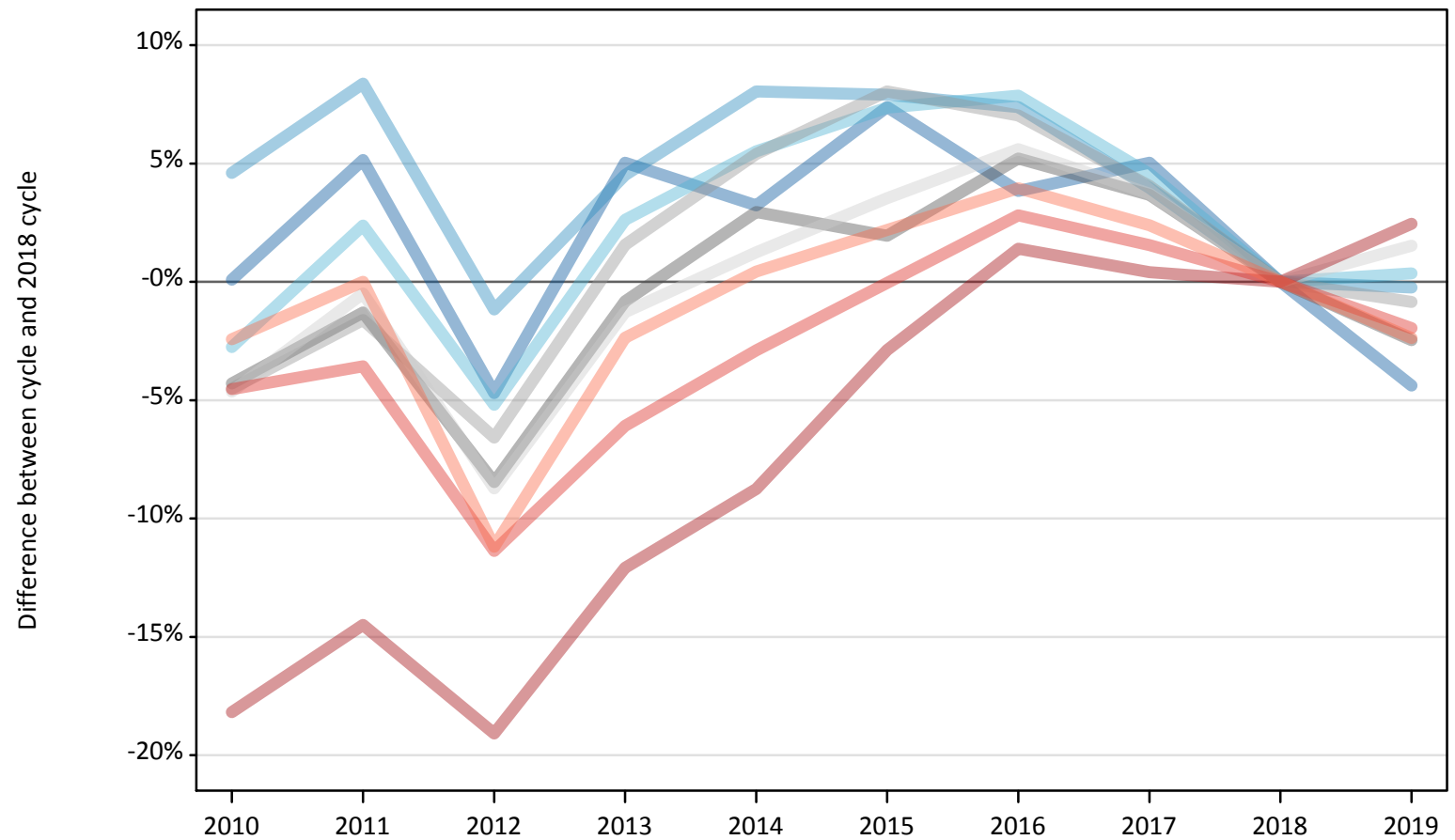
Daily Clearing Analysis: Region

Analysis at 00:05 on Tuesday 20 August 2019 (5 days after A level results day)

R.1 Placed applicants by region of domicile: 5 days after A level results day

Placed applicants: change relative to 2018 cycle totals

- North East
- North West
- Yorkshire and The Humber
- East Midlands
- West Midlands
- East of England
- London
- South East
- South West



Note: The percentage change is not plotted in the above chart for groups with fewer than 30 placed applicants in any one cycle.

R.2 Placed applicants by region of domicile: 5 days after A level results day

Applicant Status	Domicile	2010	2011	2012	2013	2014	2015	2016	2017	2018	2019
Placed	North East	14,050	14,760	13,370	14,740	14,490	15,070	14,570	14,740	14,030	13,420
	North West	44,120	45,710	41,690	44,080	45,570	45,510	45,290	43,850	42,180	42,080
	Yorkshire and The Humber	28,790	30,320	28,070	30,390	31,240	31,790	31,940	30,960	29,610	29,720
	East Midlands	24,720	25,500	23,650	25,620	26,590	26,330	27,180	26,780	25,830	25,200
	West Midlands	32,630	33,620	31,920	34,700	36,020	36,920	36,570	35,560	34,170	33,880
	East of England	32,970	34,410	31,560	34,130	35,010	35,800	36,510	35,860	34,580	35,110
	London	53,930	56,350	53,330	57,940	60,140	64,010	66,830	66,180	65,910	67,530
	South East	53,610	54,160	49,770	52,740	54,540	56,140	57,740	57,030	56,160	55,060
	South West	30,380	31,130	27,650	30,400	31,270	31,810	32,370	31,880	31,140	30,400
	(England total)	315,200	325,950	301,010	324,750	334,870	343,390	349,010	342,840	333,610	332,380
	Scotland	27,450	27,150	27,020	27,640	28,500	31,390	32,760	33,330	33,860	32,630
	Northern Ireland	12,200	12,480	11,570	13,000	12,910	12,660	13,480	13,080	12,320	12,440
	Wales	16,370	16,160	16,960	17,150	17,950	18,320	18,590	18,150	17,680	17,440
	UK	371,230	381,740	356,560	382,540	394,220	405,760	413,840	407,400	397,470	394,890

R.3 Placed applicants by region of domicile: 5 days after A level results day

Placed applicants: change relative to 2018 cycle totals

Applicant Status	Domicile	2010	2011	2012	2013	2014	2015	2016	2017	2018	2019
Placed	North East	0%	5%	-5%	5%	3%	7%	4%	5%	0%	-4%
	North West	5%	8%	-1%	5%	8%	8%	7%	4%	0%	-0%
	Yorkshire and The Humber	-3%	2%	-5%	3%	6%	7%	8%	5%	0%	0%
	East Midlands	-4%	-1%	-8%	-1%	3%	2%	5%	4%	0%	-2%
	West Midlands	-5%	-2%	-7%	2%	5%	8%	7%	4%	0%	-1%
	East of England	-5%	-0%	-9%	-1%	1%	4%	6%	4%	0%	2%
	London	-18%	-15%	-19%	-12%	-9%	-3%	1%	0%	0%	2%
	South East	-5%	-4%	-11%	-6%	-3%	-0%	3%	2%	0%	-2%
	South West	-2%	-0%	-11%	-2%	0%	2%	4%	2%	0%	-2%
	(England total)	-6%	-2%	-10%	-3%	0%	3%	5%	3%	0%	-0%
	Scotland	-19%	-20%	-20%	-18%	-16%	-7%	-3%	-2%	0%	-4%
	Northern Ireland	-1%	1%	-6%	6%	5%	3%	9%	6%	0%	1%
	Wales	-7%	-9%	-4%	-3%	1%	4%	5%	3%	0%	-1%
	UK	-7%	-4%	-10%	-4%	-1%	2%	4%	2%	0%	-1%

Note: The percentage change is not recorded in the above table for groups with fewer than 10 placed applicants in that cycle or in the 2018 cycle.

R.4 Placed applicants by region of domicile: 5 days after A level results day

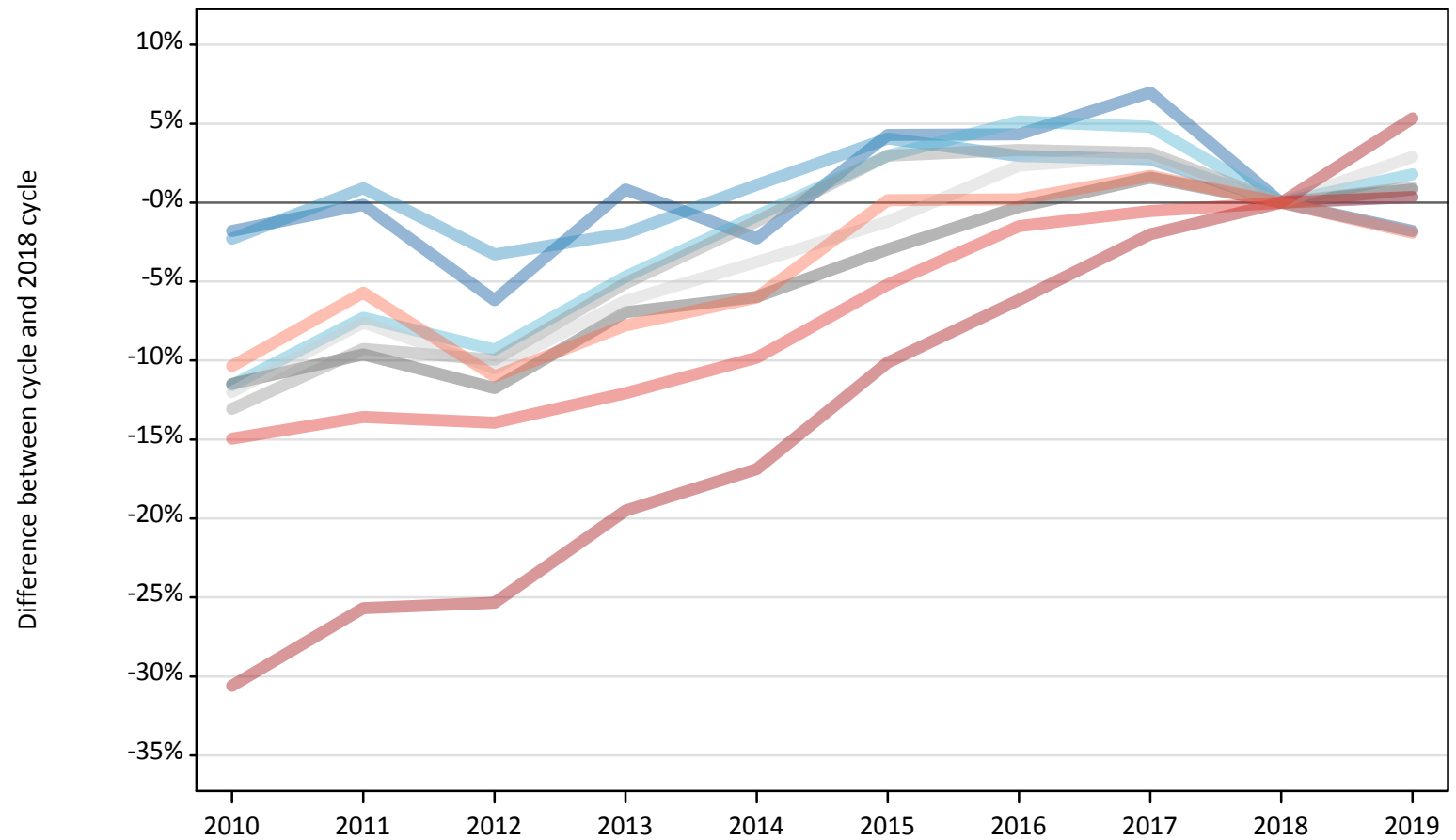
Placed applicants: absolute change relative to 2018 cycle totals

Applicant Status	Domicile	2010	2011	2012	2013	2014	2015	2016	2017	2018	2019
Placed	North East	10	720	-660	710	450	1,040	540	710	0	-620
	North West	1,940	3,530	-490	1,900	3,400	3,340	3,120	1,670	0	-100
	Yorkshire and The Humber	-820	710	-1,540	780	1,630	2,180	2,330	1,350	0	110
	East Midlands	-1,110	-330	-2,190	-210	760	500	1,350	950	0	-640
	West Midlands	-1,540	-550	-2,250	530	1,850	2,750	2,400	1,390	0	-290
	East of England	-1,600	-170	-3,020	-440	430	1,220	1,940	1,290	0	530
	London	-11,980	-9,560	-12,580	-7,970	-5,770	-1,900	920	270	0	1,620
	South East	-2,550	-2,000	-6,390	-3,420	-1,630	-20	1,580	870	0	-1,100
	South West	-760	0	-3,490	-740	140	680	1,230	740	0	-740
	(England total)	-18,410	-7,660	-32,600	-8,860	1,260	9,780	15,400	9,230	0	-1,230
	Scotland	-6,410	-6,710	-6,840	-6,220	-5,360	-2,470	-1,100	-530	0	-1,230
	Northern Ireland	-120	170	-740	680	600	350	1,170	760	0	130
	Wales	-1,310	-1,530	-730	-530	260	640	910	470	0	-250
	UK	-26,240	-15,730	-40,910	-14,930	-3,240	8,300	16,380	9,940	0	-2,570

R.5 Placed 18 year old applicants by region of domicile: 5 days after A level results day

Placed 18 year old applicants: change relative to 2018 cycle totals

- North East
- North West
- Yorkshire and The Humber
- East Midlands
- West Midlands
- East of England
- London
- South East
- South West



Note: The percentage change is not plotted in the above chart for groups with fewer than 30 placed applicants in any one cycle.

R.6 Placed 18 year old applicants by region of domicile: 5 days after A level results day

Applicant Status	Domicile	2010	2011	2012	2013	2014	2015	2016	2017	2018	2019
Placed	North East	7,680	7,810	7,340	7,890	7,640	8,160	8,160	8,370	7,820	7,680
	North West	24,610	25,420	24,370	24,700	25,470	26,210	25,930	25,880	25,190	25,280
	Yorkshire and The Humber	15,670	16,430	16,070	16,890	17,570	18,250	18,630	18,570	17,720	18,040
	East Midlands	13,870	14,160	13,820	14,580	14,730	15,200	15,620	15,910	15,660	15,790
	West Midlands	17,360	18,120	17,990	18,950	19,730	20,570	20,640	20,600	19,970	20,160
	East of England	19,170	20,130	19,500	20,430	20,970	21,520	22,300	22,430	21,790	22,420
	London	25,880	27,710	27,840	30,020	31,000	33,510	34,990	36,540	37,290	39,280
	South East	29,640	30,110	29,990	30,640	31,430	33,040	34,330	34,660	34,850	34,970
	South West	15,190	15,980	15,080	15,630	15,930	16,970	16,980	17,230	16,950	16,620
	(England total)	169,070	175,880	172,000	179,720	184,470	193,430	197,580	200,190	197,240	200,240
	Scotland	14,450	13,800	13,890	14,010	14,230	14,340	14,590	14,560	14,570	14,000
	Northern Ireland	8,020	7,910	7,460	8,140	7,840	7,770	7,990	7,910	7,350	7,420
	Wales	9,400	9,010	9,440	9,420	9,760	10,200	10,380	10,050	9,890	9,700
	UK	200,930	206,610	202,790	211,290	216,300	225,730	230,540	232,720	229,040	231,360

R.7 Placed 18 year old applicants by region of domicile: 5 days after A level results day

Placed 18 year old applicants: change relative to 2018 cycle totals

Applicant Status	Domicile	2010	2011	2012	2013	2014	2015	2016	2017	2018	2019
Placed	North East	-2%	-0%	-6%	1%	-2%	4%	4%	7%	0%	-2%
	North West	-2%	1%	-3%	-2%	1%	4%	3%	3%	0%	0%
	Yorkshire and The Humber	-12%	-7%	-9%	-5%	-1%	3%	5%	5%	0%	2%
	East Midlands	-11%	-10%	-12%	-7%	-6%	-3%	-0%	2%	0%	1%
	West Midlands	-13%	-9%	-10%	-5%	-1%	3%	3%	3%	0%	1%
	East of England	-12%	-8%	-10%	-6%	-4%	-1%	2%	3%	0%	3%
	London	-31%	-26%	-25%	-20%	-17%	-10%	-6%	-2%	0%	5%
	South East	-15%	-14%	-14%	-12%	-10%	-5%	-1%	-1%	0%	0%
	South West	-10%	-6%	-11%	-8%	-6%	0%	0%	2%	0%	-2%
	(England total)	-14%	-11%	-13%	-9%	-6%	-2%	0%	1%	0%	2%
	Scotland	-1%	-5%	-5%	-4%	-2%	-2%	0%	-0%	0%	-4%
	Northern Ireland	9%	8%	1%	11%	7%	6%	9%	8%	0%	1%
	Wales	-5%	-9%	-5%	-5%	-1%	3%	5%	2%	0%	-2%
	UK	-12%	-10%	-11%	-8%	-6%	-1%	1%	2%	0%	1%

Note: The percentage change is not recorded in the above table for groups with fewer than 10 placed applicants in that cycle or in the 2018 cycle.

R.8 Placed 18 year old applicants by region of domicile: 5 days after A level results day

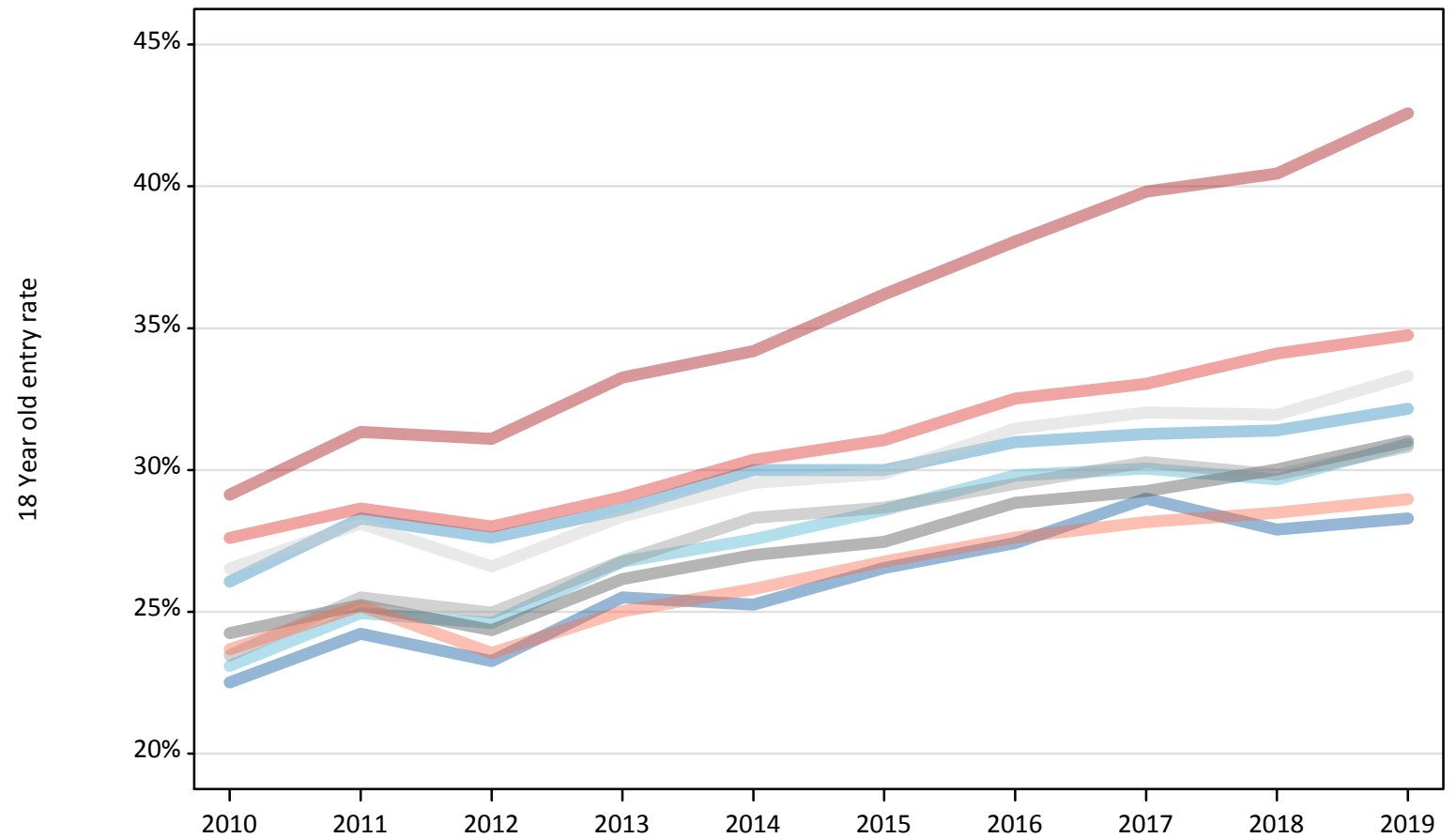
Placed 18 year old applicants: absolute change relative to 2018 cycle totals

Applicant Status	Domicile	2010	2011	2012	2013	2014	2015	2016	2017	2018	2019
Placed	North East	-140	-10	-480	70	-180	340	340	550	0	-140
	North West	-580	230	-830	-490	280	1,020	740	690	0	90
	Yorkshire and The Humber	-2,050	-1,290	-1,650	-830	-150	530	910	850	0	320
	East Midlands	-1,800	-1,510	-1,840	-1,090	-940	-460	-40	250	0	130
	West Midlands	-2,610	-1,850	-1,990	-1,020	-240	590	670	630	0	190
	East of England	-2,610	-1,650	-2,280	-1,350	-820	-260	510	640	0	630
	London	-11,410	-9,580	-9,450	-7,270	-6,290	-3,780	-2,300	-750	0	1,990
	South East	-5,210	-4,730	-4,860	-4,210	-3,420	-1,810	-520	-180	0	120
	South West	-1,750	-970	-1,860	-1,320	-1,020	30	40	290	0	-330
	(England total)	-28,160	-21,350	-25,240	-17,510	-12,760	-3,810	350	2,960	0	3,010
	Scotland	-120	-760	-670	-560	-330	-230	20	0	0	-570
	Northern Ireland	670	560	110	790	490	420	640	560	0	70
	Wales	-500	-880	-450	-480	-140	300	490	160	0	-190
	UK	-28,110	-22,430	-26,260	-17,750	-12,740	-3,320	1,490	3,670	0	2,310

R.9 Placed 18 year old applicants by region of domicile: 5 days after A level results day

Placed 18 year old applicants: entry rate

- North East
- North West
- Yorkshire and The Humber
- East Midlands
- West Midlands
- East of England
- London
- South East
- South West



R.10 Placed 18 year old applicants by region of domicile: 5 days after A level results day

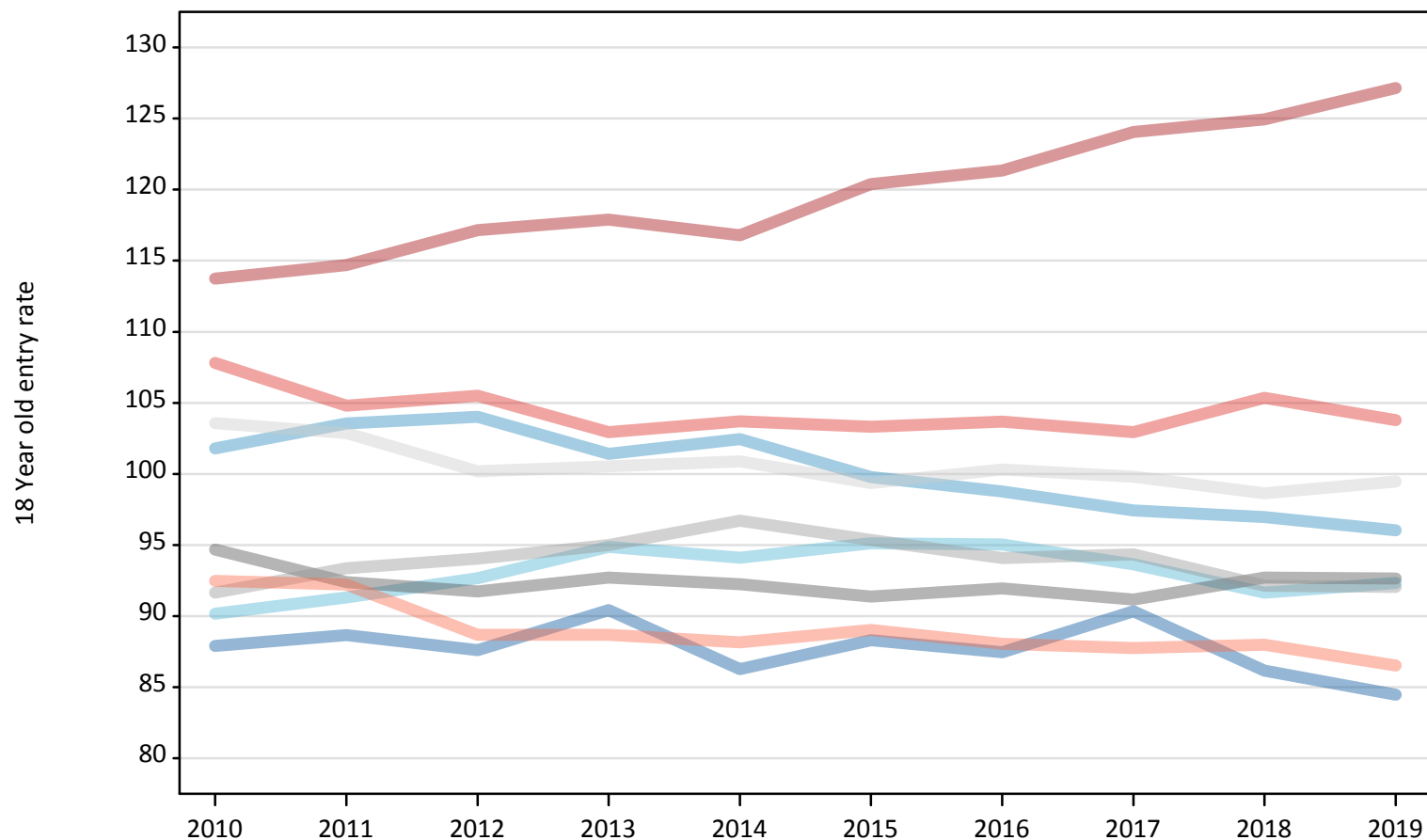
Placed 18 year old applicants: entry rate

Applicant Status	Domicile	2010	2011	2012	2013	2014	2015	2016	2017	2018	2019
Placed	North East	22.5%	24.2%	23.3%	25.5%	25.3%	26.5%	27.4%	29.0%	27.9%	28.3%
	North West	26.1%	28.3%	27.6%	28.6%	30.0%	30.0%	31.0%	31.3%	31.4%	32.2%
	Yorkshire and The Humber	23.1%	25.0%	24.6%	26.8%	27.5%	28.6%	29.8%	30.1%	29.7%	30.9%
	East Midlands	24.2%	25.2%	24.4%	26.2%	27.0%	27.5%	28.8%	29.3%	30.0%	31.0%
	West Midlands	23.5%	25.5%	25.0%	26.8%	28.3%	28.7%	29.5%	30.3%	29.8%	30.8%
	East of England	26.5%	28.1%	26.6%	28.4%	29.5%	29.9%	31.5%	32.0%	31.9%	33.3%
	London	29.1%	31.3%	31.1%	33.3%	34.2%	36.2%	38.1%	39.8%	40.5%	42.6%
	South East	27.6%	28.6%	28.0%	29.0%	30.4%	31.1%	32.5%	33.0%	34.1%	34.8%
	South West	23.7%	25.2%	23.5%	25.0%	25.8%	26.8%	27.6%	28.2%	28.5%	29.0%
	(England total)	25.6%	27.3%	26.5%	28.2%	29.3%	30.1%	31.4%	32.1%	32.4%	33.5%
	Scotland	22.6%	22.0%	22.4%	22.7%	23.2%	23.8%	24.8%	25.4%	26.2%	26.0%
	Northern Ireland	31.4%	31.6%	29.7%	33.2%	32.3%	31.3%	32.7%	32.7%	31.7%	33.1%
	Wales	23.6%	23.4%	24.5%	24.9%	26.0%	27.1%	28.6%	28.3%	28.8%	28.9%
	UK	25.4%	26.8%	26.2%	27.8%	28.7%	29.5%	30.8%	31.4%	31.7%	32.7%

R.11 Placed 18 year old applicants by region of domicile: 5 days after A level results day

Placed 18 year old applicants: entry rates (indexed to 100 = England)

- North East
- North West
- Yorkshire and The Humber
- East Midlands
- West Midlands
- East of England
- London
- South East
- South West



R.12 Placed 18 year old applicants by region of domicile: 5 days after A level results day

Placed 18 year old applicants: entry rate (indexed to 100 = England)

Applicant Status	Domicile	2010	2011	2012	2013	2014	2015	2016	2017	2018	2019
Placed	North East	88	89	88	90	86	88	87	90	86	84
	North West	102	104	104	101	102	100	99	97	97	96
	Yorkshire and The Humber	90	91	93	95	94	95	95	94	92	92
	East Midlands	95	92	92	93	92	91	92	91	93	93
	West Midlands	92	93	94	95	97	95	94	94	92	92
	East of England	104	103	100	101	101	99	100	100	99	99
	London	114	115	117	118	117	120	121	124	125	127
	South East	108	105	106	103	104	103	104	103	105	104
	South West	92	92	89	89	88	89	88	88	88	87
	(England total)	100	100	100	100	100	100	100	100	100	100