

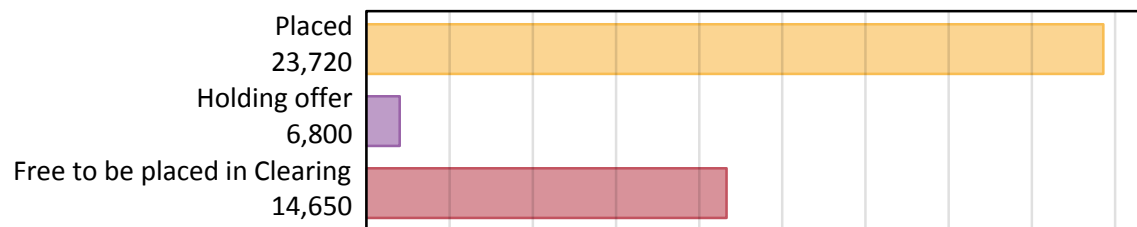
Daily Clearing Analysis: Overview

B7 Nursing analysis at 00:05 on Tuesday 20 August 2019 (5 days after A level results day)

AB.1 Placed applicants to nursing from all domiciles, 2019 cycle

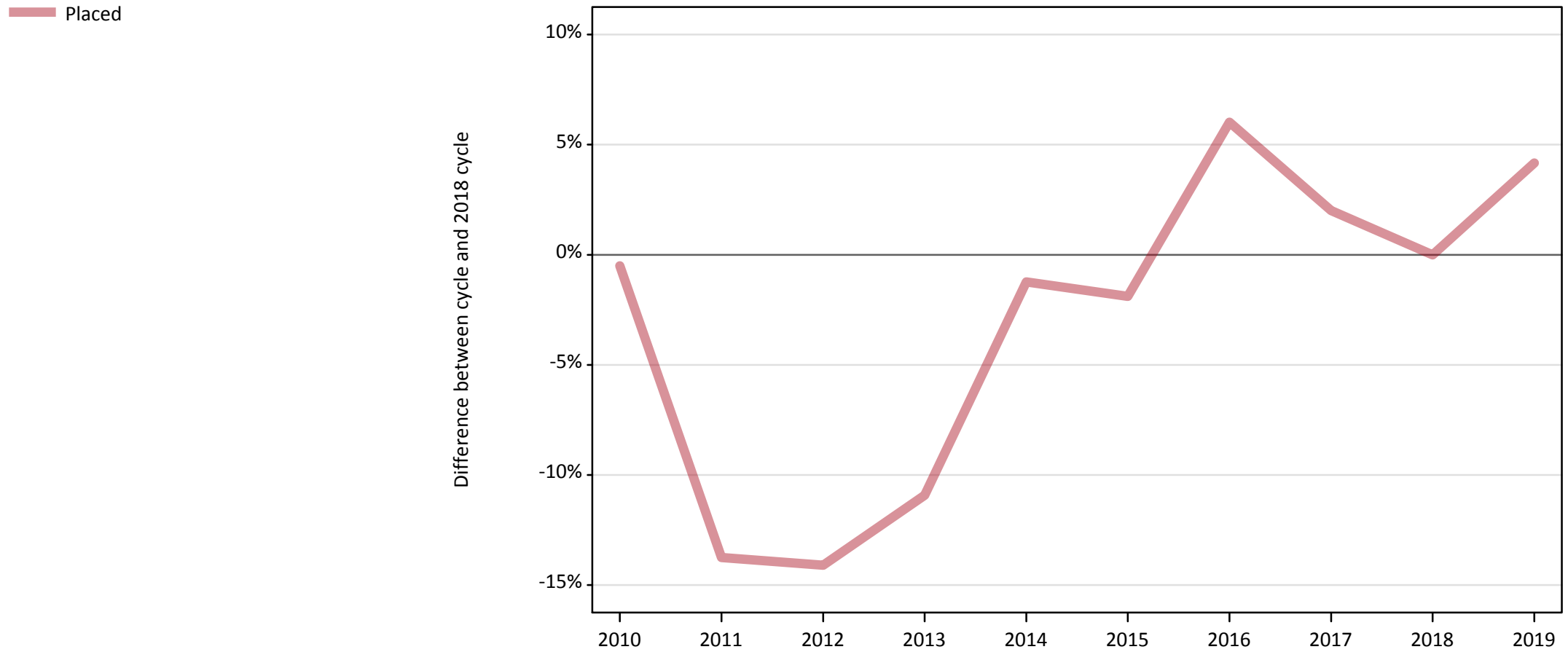
Applicant type	Status	2019
Main scheme	Placed (Clearing)	760
	Placed (Adjustment)	10
	Placed (Firm)	21,150
	Placed (Insurance)	490
	Placed (Other)	1,090
	Holding offer	6,800
	Free to be placed in Clearing	14,650
Direct to Clearing	Placed (Direct to Clearing)	220
	Other (Direct to Clearing)	500
All applicants	Placed	23,720

AB.2 Summary of nursing applicants who are placed, holding offers or free to be placed in Clearing (all domiciles)



AB.3 Placed applicants to nursing from all domiciles: 5 days after A level results day

Placed applicants to nursing: difference between cycle and 2018 cycle



Note: The percentage change is not plotted in the above chart for groups with fewer than 30 placed applicants in any one cycle.

AB.4 Placed applicants to nursing from all domiciles: 5 days after A level results day

Placed applicants to nursing: applicants at 5 days after A level results day

Applicant type	Status	2010	2011	2012	2013	2014	2015	2016	2017	2018	2019
All applicants	Placed	22,660	19,640	19,560	20,290	22,490	22,340	24,150	23,230	22,770	23,720

AB.5 Placed applicants to nursing from all domiciles: 5 days after A level results day

Placed applicants to nursing: difference between cycle and 2018 cycle

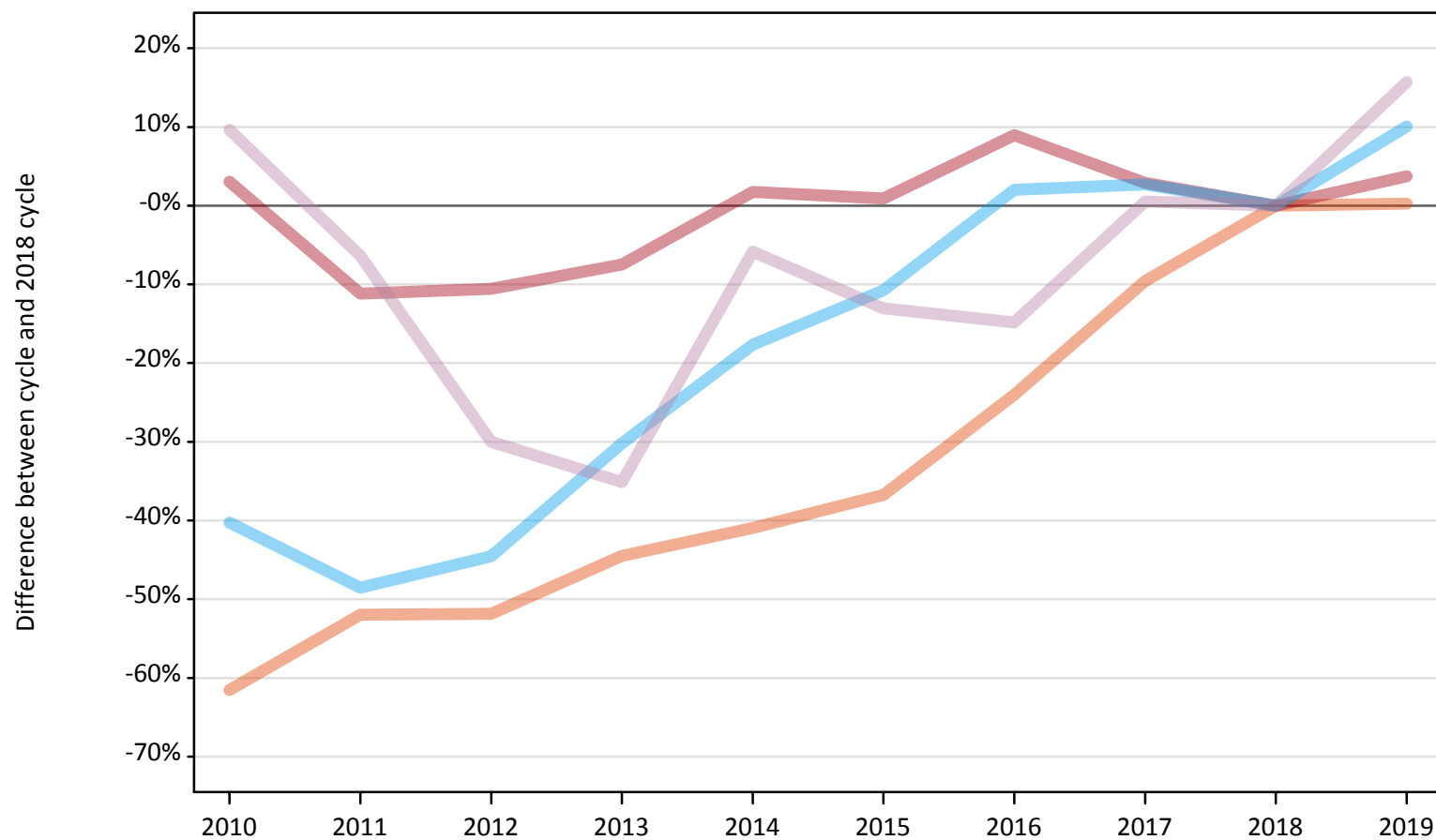
Applicant type	Status	2010	2011	2012	2013	2014	2015	2016	2017	2018	2019
All applicants	Placed	-1%	-14%	-14%	-11%	-1%	-2%	6%	2%	0%	4%

Note: The percentage change is not recorded in the above table for groups with fewer than 10 placed applicants in that cycle or in the 2018 cycle.

AB.6 Placed main scheme applicants to nursing from all domiciles: 5 days after A level results day

All Main scheme placed routes (excluding Adjustment): difference between cycle and 2018 cycle

- Placed (Clearing)
- Placed (Firm)
- Placed (Insurance)
- Placed (Other)



Note: The percentage change is not plotted in the above chart for groups with fewer than 30 placed applicants in any one cycle.

AB.7 Placed main scheme applicants to nursing from all domiciles: 5 days after A level results day

All Main scheme placed routes (excluding Adjustment): applicants at 5 days after A level results day

Applicant type	Status	2010	2011	2012	2013	2014	2015	2016	2017	2018	2019
Main scheme	Placed (Clearing)	290	370	370	420	450	480	580	690	760	760
	Placed (Firm)	21,010	18,110	18,230	18,870	20,750	20,580	22,220	20,980	20,390	21,150
	Placed (Insurance)	270	230	250	310	370	400	460	460	450	490
	Placed (Other)	1,030	880	660	610	890	820	800	950	940	1,090

AB.8 Placed main scheme applicants to nursing from all domiciles: 5 days after A level results day

All Main scheme placed routes (excluding Adjustment): difference between cycle and 2018 cycle

Applicant type	Status	2010	2011	2012	2013	2014	2015	2016	2017	2018	2019
Main scheme	Placed (Clearing)	-62%	-52%	-52%	-44%	-41%	-37%	-24%	-10%	0%	0%
	Placed (Firm)	3%	-11%	-11%	-7%	2%	1%	9%	3%	0%	4%
	Placed (Insurance)	-40%	-49%	-45%	-30%	-18%	-11%	2%	3%	0%	10%
	Placed (Other)	10%	-6%	-30%	-35%	-6%	-13%	-15%	1%	0%	16%

Note: The percentage change is not recorded in the above table for groups with fewer than 10 placed applicants in that cycle or in the 2018 cycle.

AB.9 Main scheme applicants placed to nursing through adjustment: 5 days after A level results day

Placed through adjustment: difference between cycle and 2018 cycle

[This chart is not part of this report]

AB.10 Main scheme applicants placed to nursing through adjustment: 5 days after A level results day

Placed through adjustment: applicants at 5 days after A level results day

Applicant type	Status	2010	2011	2012	2013	2014	2015	2016	2017	2018	2019
Main scheme	Placed (Adjustment)	0	0	0	0	10	10	0	20	10	10

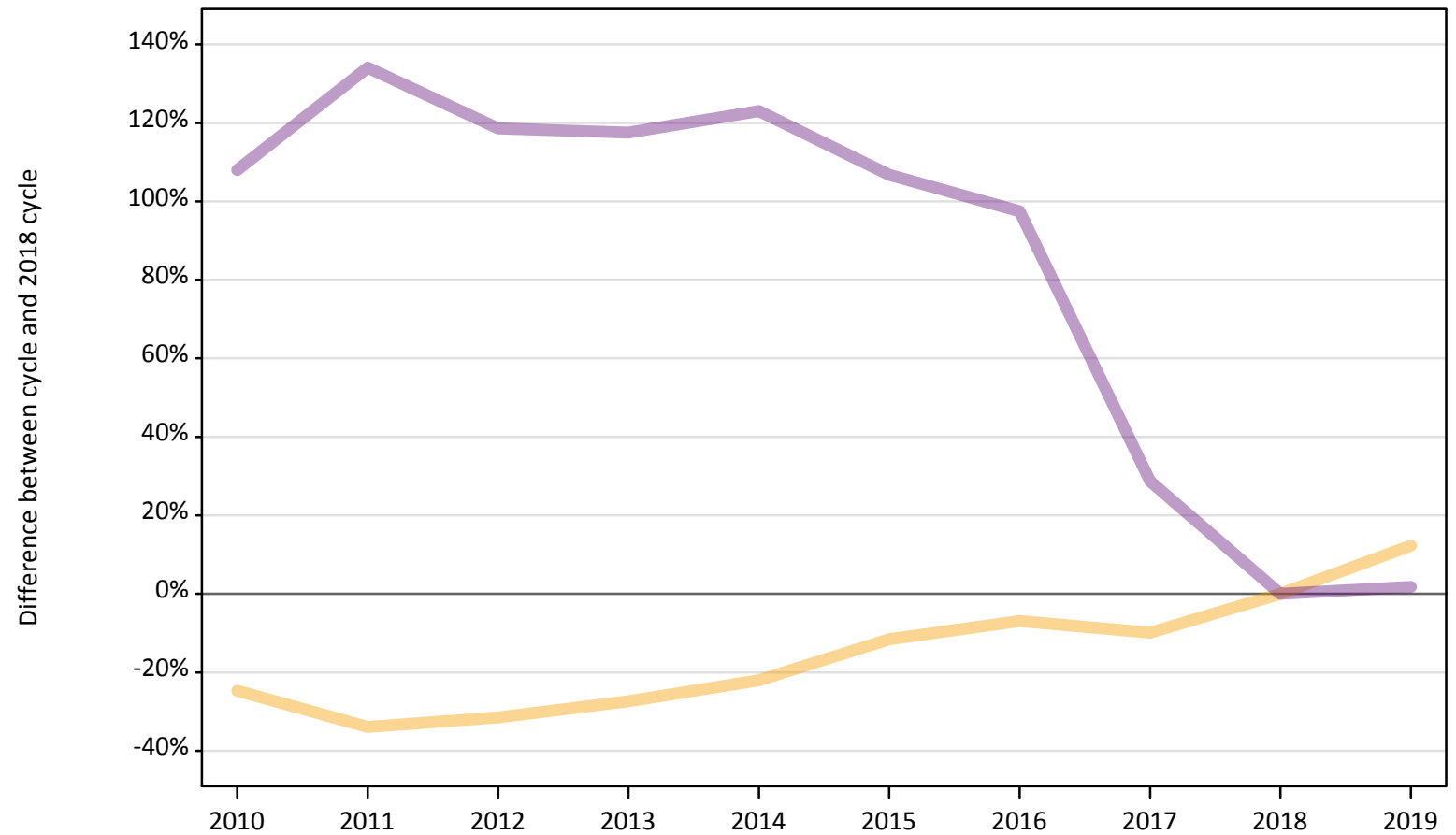
AB.11 Main scheme applicants placed to nursing through adjustment: 5 days after A level results day

Placed through adjustment: difference between cycle and 2018 cycle

[This table is not part of this report]

AB.12 Main scheme applicants to nursing not currently placed from all domiciles: 5 days after A level results day
Applicants in unplaced states: difference between cycle and 2018 cycle

— Holding offer
— Free to be placed in Clearing



Note: The percentage change is not plotted in the above chart for groups with fewer than 30 unplaced applicants in any one cycle.

AB.13 Main scheme applicants to nursing not currently placed from all domiciles: 5 days after A level results day

Applicants in unplaced states: applicants at 5 days after A level results day

Applicant type	Status	2010	2011	2012	2013	2014	2015	2016	2017	2018	2019
Main scheme	Holding offer	4,560	4,000	4,150	4,400	4,720	5,350	5,630	5,450	6,050	6,800
	Free to be placed in Clearing	29,960	33,710	31,480	31,330	32,120	29,780	28,440	18,530	14,400	14,650

AB.14 Main scheme applicants to nursing not currently placed from all domiciles: 5 days after A level results day

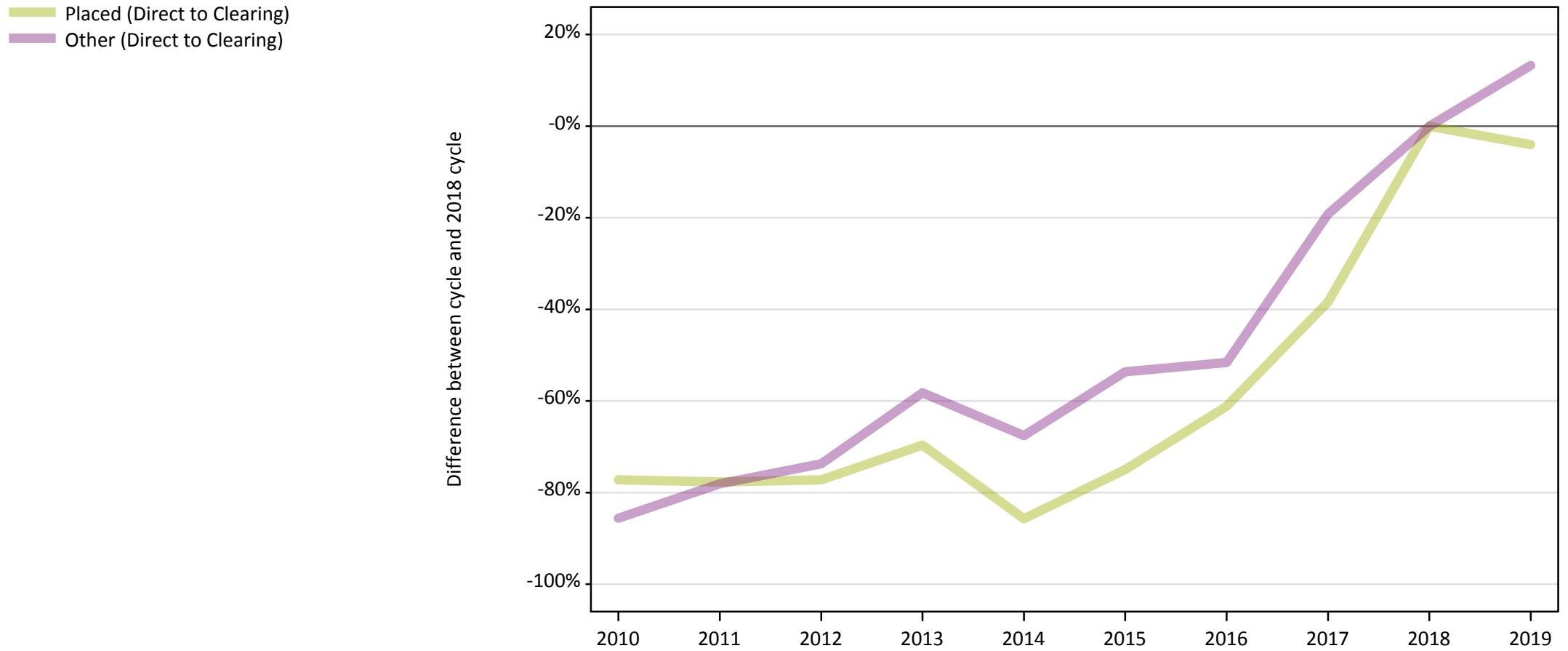
Applicants in unplaced states: difference between cycle and 2018 cycle

Applicant type	Status	2010	2011	2012	2013	2014	2015	2016	2017	2018	2019
Main scheme	Holding offer	-25%	-34%	-31%	-27%	-22%	-12%	-7%	-10%	0%	12%
	Free to be placed in Clearing	108%	134%	119%	118%	123%	107%	97%	29%	0%	2%

Note: The percentage change is not recorded in the above table for groups with fewer than 10 unplaced applicants in that cycle or in the 2018 cycle.

AB.15 Direct to Clearing applicants from all domiciles: 5 days after A level results day

Direct to Clearing: difference between cycle and 2018 cycle



Note: The percentage change is not plotted in the above chart for groups with fewer than 30 placed applicants in any one cycle.

AB.16 Direct to Clearing applicants from all domiciles: 5 days after A level results day

Direct to Clearing 5 days after A level results day

Applicant type	Status	2010	2011	2012	2013	2014	2015	2016	2017	2018	2019
Direct to Clearing	Placed (Direct to Clearing)	50	50	50	70	30	60	90	140	220	220
	Other (Direct to Clearing)	60	100	120	180	140	200	210	350	440	500

AB.17 Direct to Clearing applicants from all domiciles: 5 days after A level results day

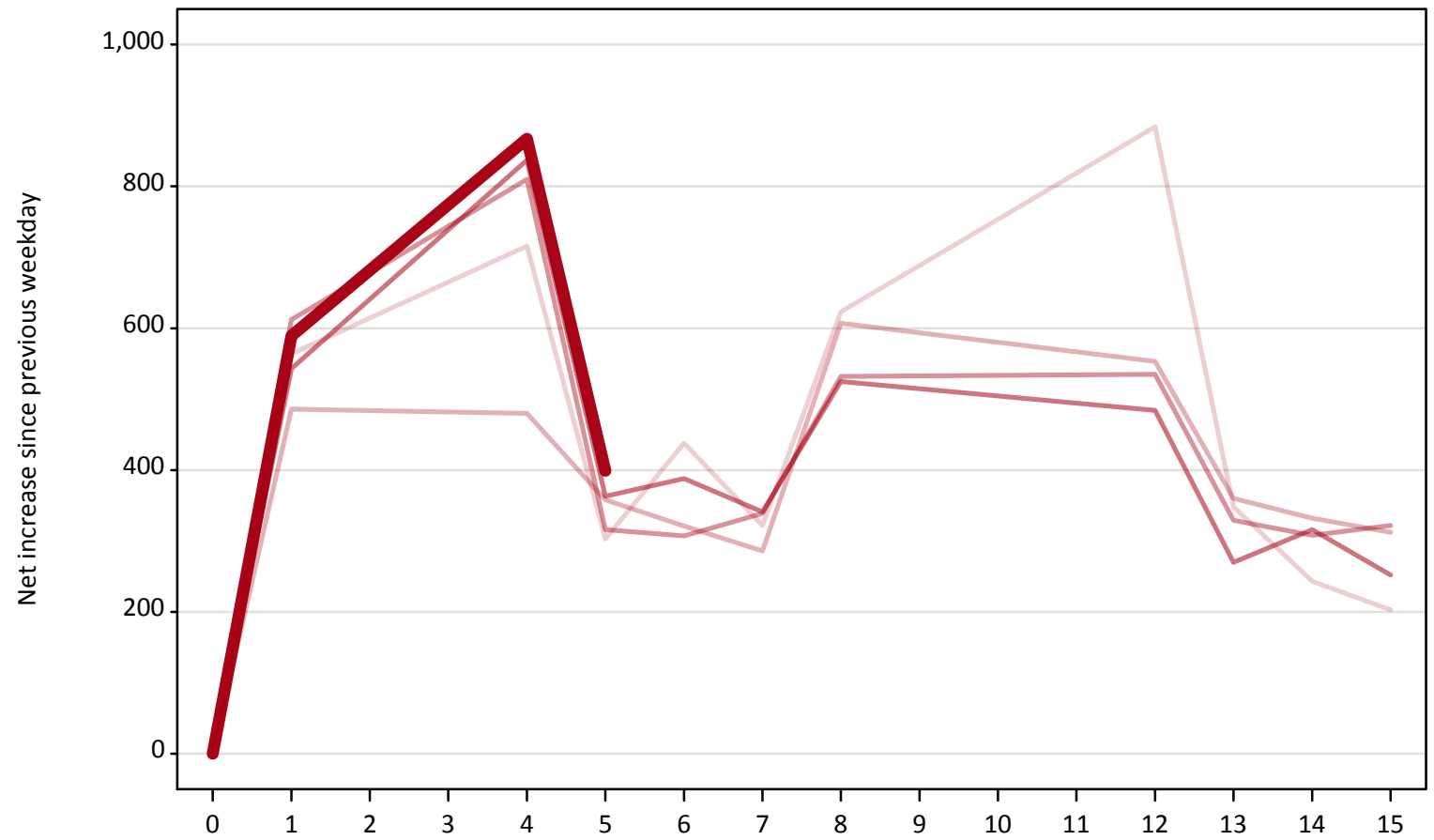
Direct to Clearing: difference between cycle and 2018 cycle

Applicant type	Status	2010	2011	2012	2013	2014	2015	2016	2017	2018	2019
Direct to Clearing	Placed (Direct to Clearing)	-77%	-78%	-77%	-70%	-86%	-75%	-61%	-38%	0%	-4%
	Other (Direct to Clearing)	-86%	-78%	-74%	-58%	-68%	-54%	-52%	-19%	0%	13%

Note: The percentage change is not recorded in the above table for groups with fewer than 10 placed applicants in that cycle or in the 2018 cycle.

AB.18 All Placed: Daily net change (from all domiciles)
Net increase since previous weekday (2019 cycle up to 5 days after A level results day)

- 2015
- 2016
- 2017
- 2018
- 2019**

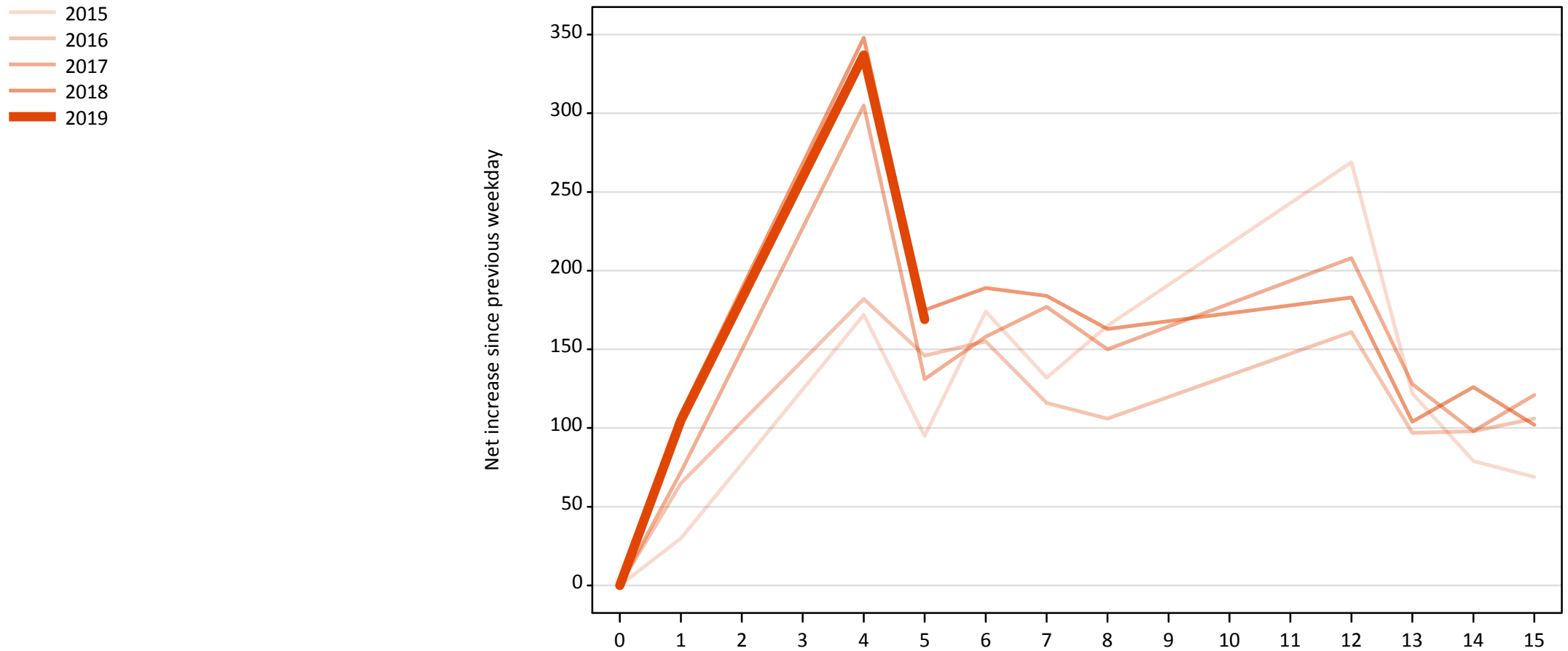


AB.19 All Placed: Daily net change (from all domiciles)

Net increase since previous weekday (2019 cycle up to 5 days after A level results day)

Applicant status, days since A level results day		2015	2016	2017	2018	2019
All Placed	0	0	0	0	0	0
	1	560	490	610	540	590
	4	720	480	810	840	870
	5	300	360	320	360	400
	6	440	320	310	390	
	7	320	290	340	340	
	8	620	610	530	530	
	12	880	550	540	480	
	13	350	360	330	270	
	14	240	330	310	320	
	15	200	310	320	250	

AB.20 Placed through Clearing only: Daily net change (from all domiciles)
Net increase since previous weekday (2019 cycle up to 5 days after A level results day)



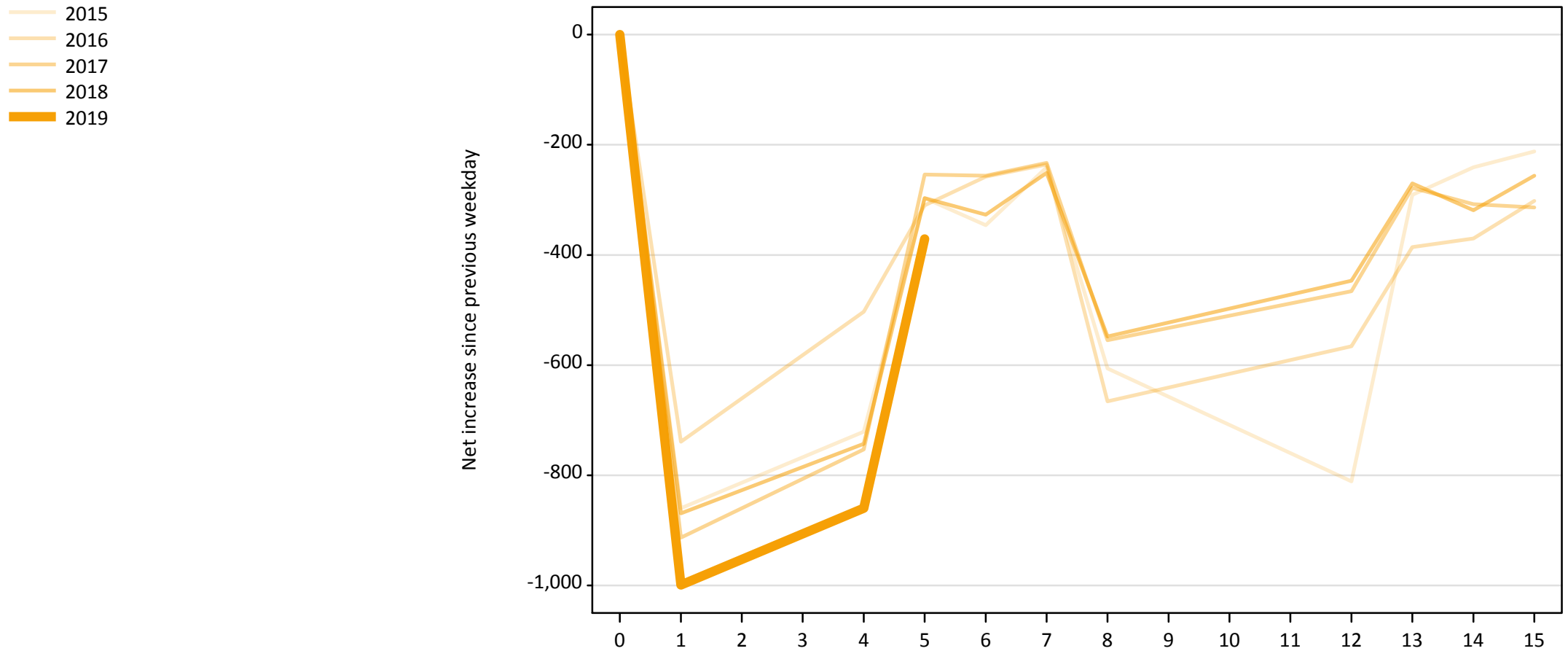
AB.21 Placed through Clearing only: Daily net change (from all domiciles)

Net increase since previous weekday (2019 cycle up to 5 days after A level results day)

Applicant status, days since A level results day		2015	2016	2017	2018	2019
Placed through Clearing only	0	0	0	0	0	0
	1	30	70	70	110	110
	4	170	180	310	350	340
	5	100	150	130	180	170
	6	170	160	160	190	
	7	130	120	180	180	
	8	170	110	150	160	
	12	270	160	210	180	
	13	120	100	130	100	
	14	80	100	100	130	
	15	70	110	120	100	

AB.22 Holding Offer: Daily net change (from all domiciles)

Net increase since previous weekday (2019 cycle up to 5 days after A level results day)



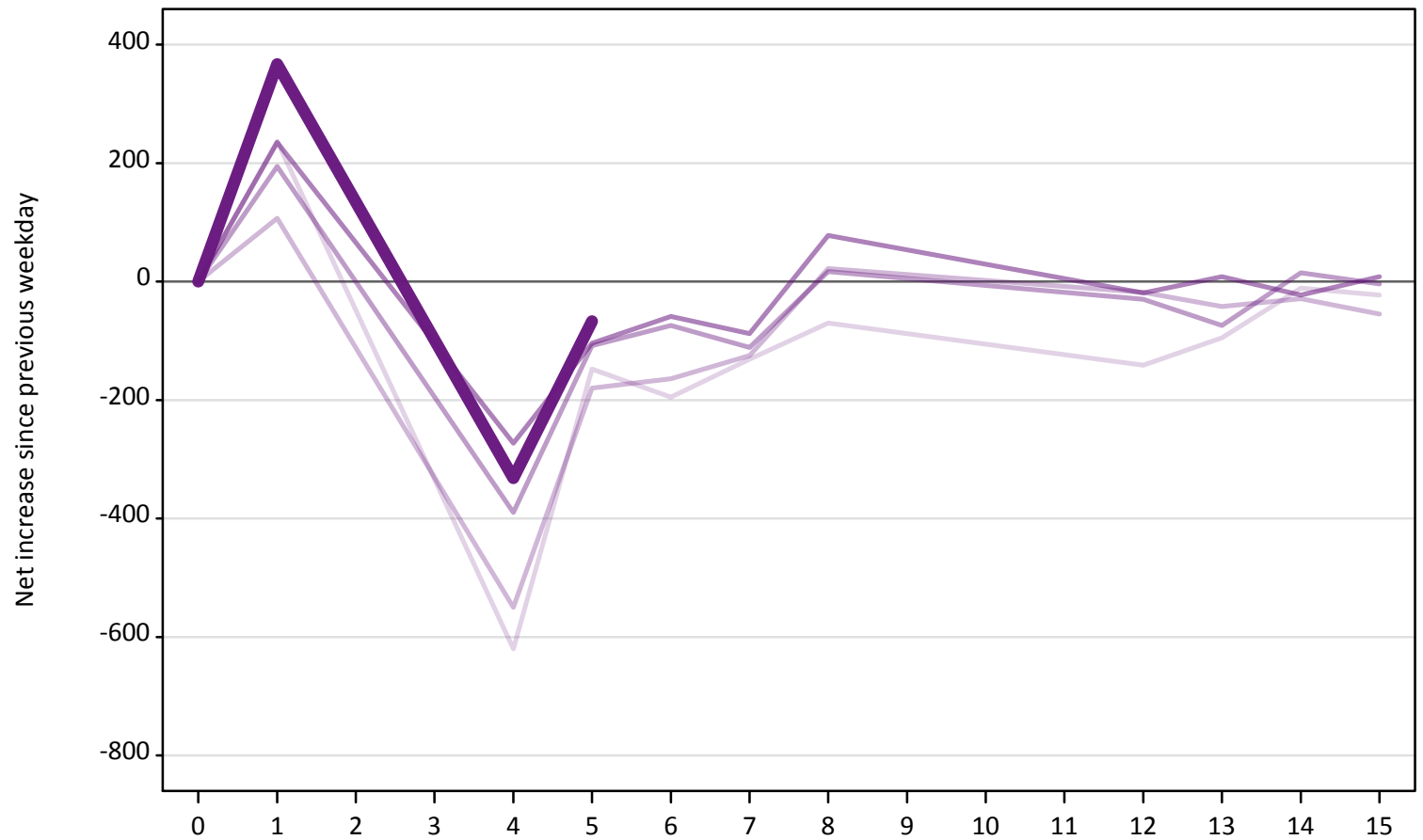
AB.23 Holding Offer: Daily net change (from all domiciles)

Net increase since previous weekday (2019 cycle up to 5 days after A level results day)

Applicant status, days since A level results day	2015	2016	2017	2018	2019	
Holding Offer	0	0	0	0	0	
	1	-860	-740	-910	-870	-1,000
	4	-720	-500	-750	-740	-860
	5	-300	-310	-250	-300	-370
	6	-350	-260	-260	-330	
	7	-240	-240	-230	-250	
	8	-610	-670	-560	-550	
	12	-810	-570	-470	-450	
	13	-290	-390	-280	-270	
	14	-240	-370	-310	-320	
	15	-210	-300	-310	-260	

AB.24 Free to be placed in Clearing: Daily net change (from all domiciles)
Net increase since previous weekday (2019 cycle up to 5 days after A level results day)

- 2015
- 2016
- 2017
- 2018
- 2019



AB.25 Free to be placed in Clearing: Daily net change (from all domiciles)
 Net increase since previous weekday (2019 cycle up to 5 days after A level results day)

Applicant status, days since A level results day		2015	2016	2017	2018	2019
Free to be placed in Clearing	0	0	0	0	0	0
	1	240	110	190	240	370
	4	-620	-550	-390	-270	-330
	5	-150	-180	-110	-100	-70
	6	-200	-160	-70	-60	
	7	-130	-130	-110	-90	
	8	-70	20	20	80	
	12	-140	-20	-30	-20	
	13	-100	-40	-70	10	
	14	-10	-30	20	-20	
	15	-20	-60	0	10	