

B7 Nursing analysis at 00:05 on Tuesday 20 August 2019 (5 days after A level results day)

CB.1 Placed applicants to nursing by country of domicile and age group, 2019 cycle (5 days after A level results day)

Domicile of applicant	Age group				
	17 and under	18	19	20 to 24	25 and over
England	0	4,580	2,090	3,800	7,030
Northern Ireland	0	320	180	230	270
Scotland	20	650	330	730	1,450
Wales	0	310	210	360	640
UK	30	5,870	2,800	5,120	9,380

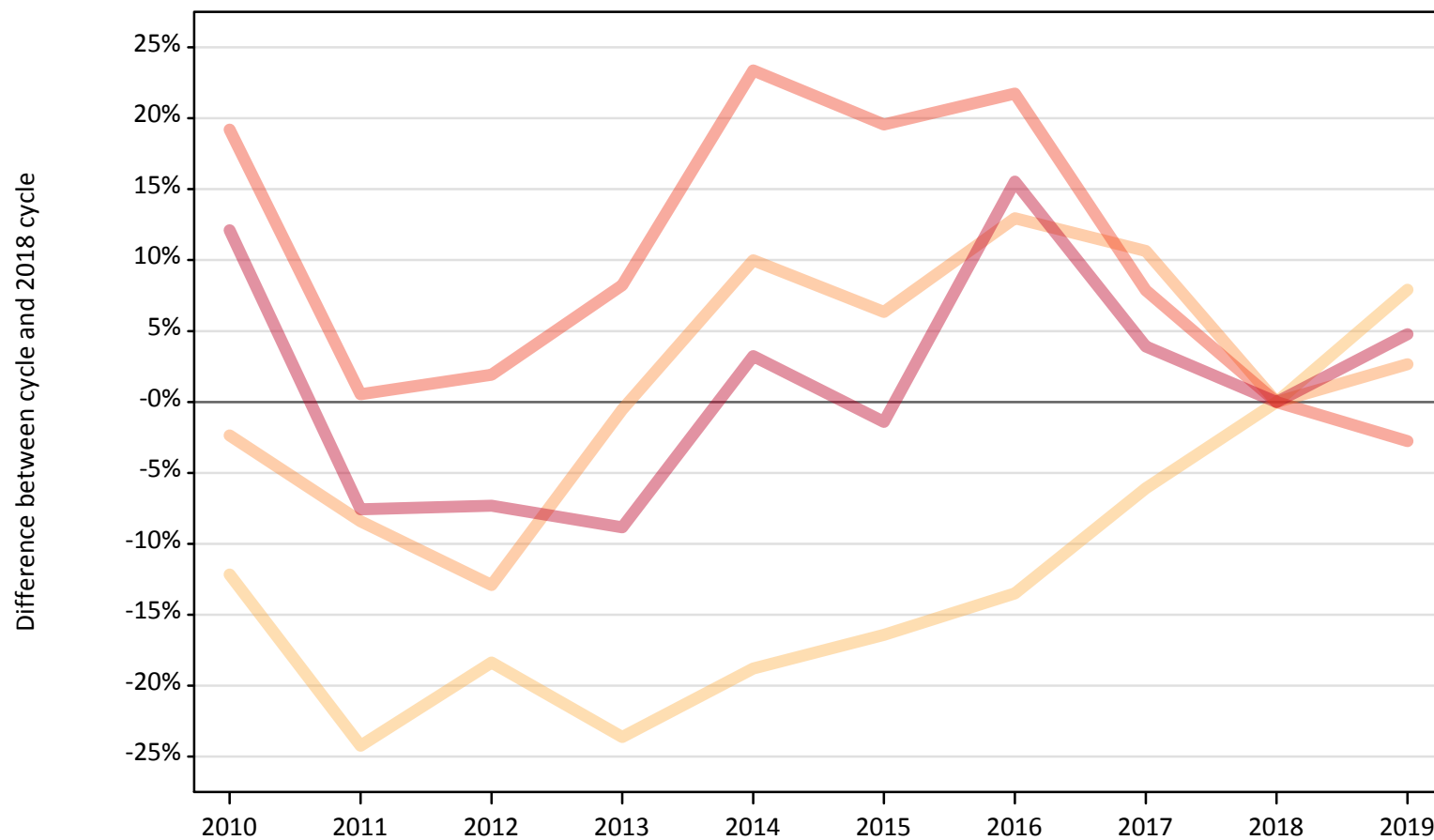
CB.2 Proportion of 18 year old population placed to nursing by country of domicile, 2019 cycle (5 days after A level results day)

Domicile of applicant	Age group	2019
England	18	0.8%
Northern Ireland	18	1.4%
Scotland	18	1.2%
Wales	18	0.9%

CB.3 Placed applicants to nursing from England by age group at 5 days after A level results day

Selected age groups: difference between cycle and 2018 cycle

- 17 and under
- 18
- 19
- 20 to 24
- 25 and over



Note: The percentage change is not plotted in the above chart for groups with fewer than 30 placed applicants in any one cycle.

CB.4 Placed applicants to nursing from England by age group at 5 days after A level results day

All age groups

Domicile of applicant	Age group	2010	2011	2012	2013	2014	2015	2016	2017	2018	2019
England	17 and under	70	20	0	0	10	0	0	10	10	0
	18	3,730	3,220	3,470	3,240	3,450	3,550	3,670	3,990	4,250	4,580
	19	1,980	1,860	1,770	2,020	2,230	2,160	2,290	2,250	2,030	2,090
	20 to 24	4,660	3,930	3,980	4,230	4,820	4,670	4,750	4,210	3,910	3,800
	25 and over	7,520	6,200	6,220	6,120	6,930	6,620	7,750	6,970	6,710	7,030

CB.5 Placed applicants to nursing from England by age group at 5 days after A level results day

Selected age groups: difference between cycle and 2018 cycle

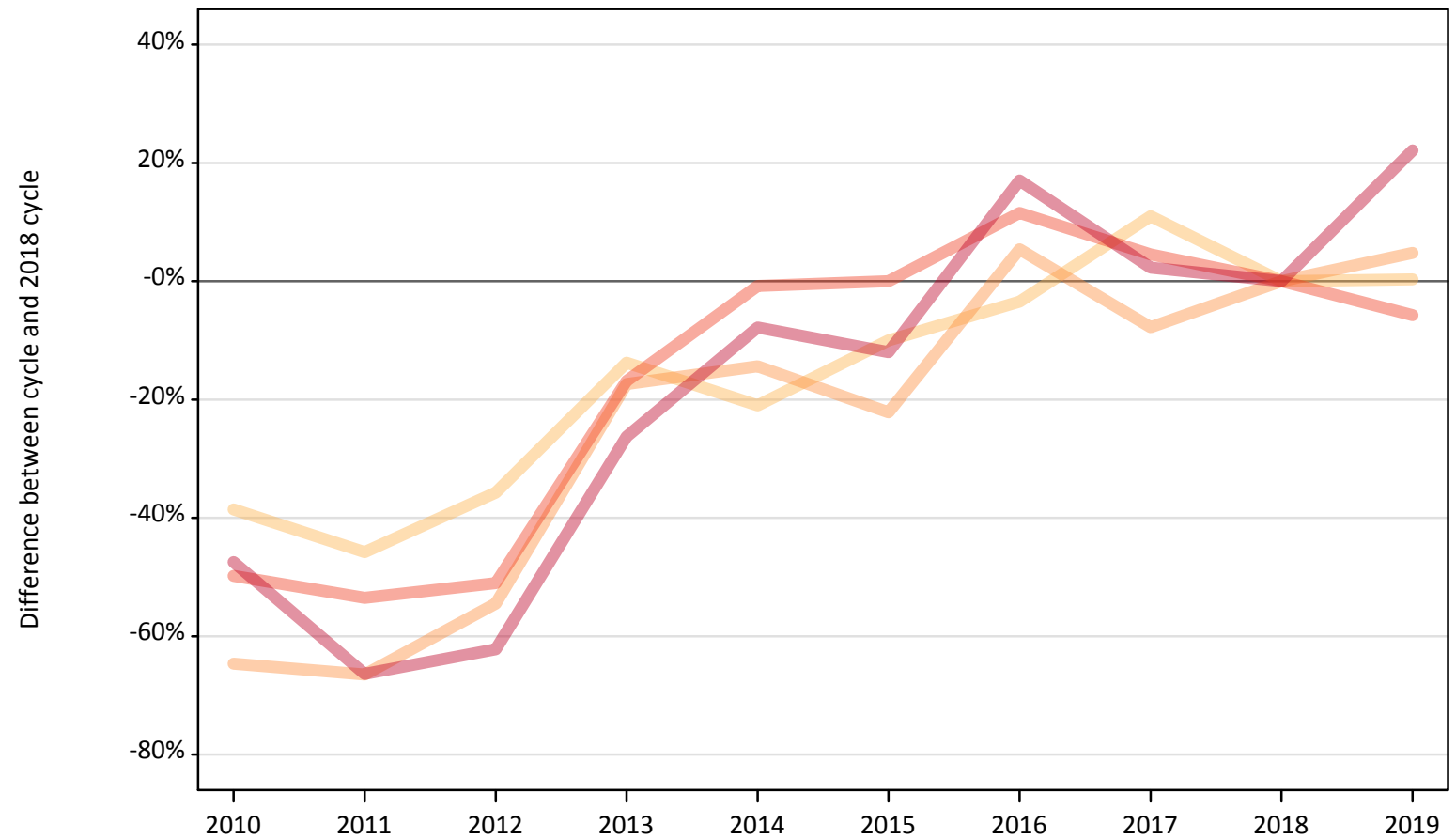
Domicile of applicant	Age group	2010	2011	2012	2013	2014	2015	2016	2017	2018	2019
England	17 and under										
	18	-12%	-24%	-18%	-24%	-19%	-16%	-13%	-6%	0%	8%
	19	-2%	-8%	-13%	-1%	10%	6%	13%	11%	0%	3%
	20 to 24	19%	1%	2%	8%	23%	20%	22%	8%	0%	-3%
	25 and over	12%	-8%	-7%	-9%	3%	-1%	16%	4%	0%	5%

Note: The percentage change is not recorded in the above table for groups with fewer than 10 placed applicants in that cycle or in the 2018 cycle.

CB.6 Placed applicants to nursing from Northern Ireland by age group at 5 days after A level results day

Selected age groups: difference between cycle and 2018 cycle

- 17 and under
- 18
- 19
- 20 to 24
- 25 and over



Note: The percentage change is not plotted in the above chart for groups with fewer than 30 placed applicants in any one cycle.

CB.7 Placed applicants to nursing from Northern Ireland by age group at 5 days after A level results day

All age groups

Domicile of applicant	Age group	2010	2011	2012	2013	2014	2015	2016	2017	2018	2019
Northern Ireland	17 and under	0	0	0	0	0	0	0	0	0	0
	18	200	170	210	280	250	290	310	350	320	320
	19	60	60	80	140	140	130	180	150	170	180
	20 to 24	120	110	120	200	240	240	270	250	240	230
	25 and over	110	70	80	160	200	190	250	220	220	270

CB.8 Placed applicants to nursing from Northern Ireland by age group at 5 days after A level results day

Selected age groups: difference between cycle and 2018 cycle

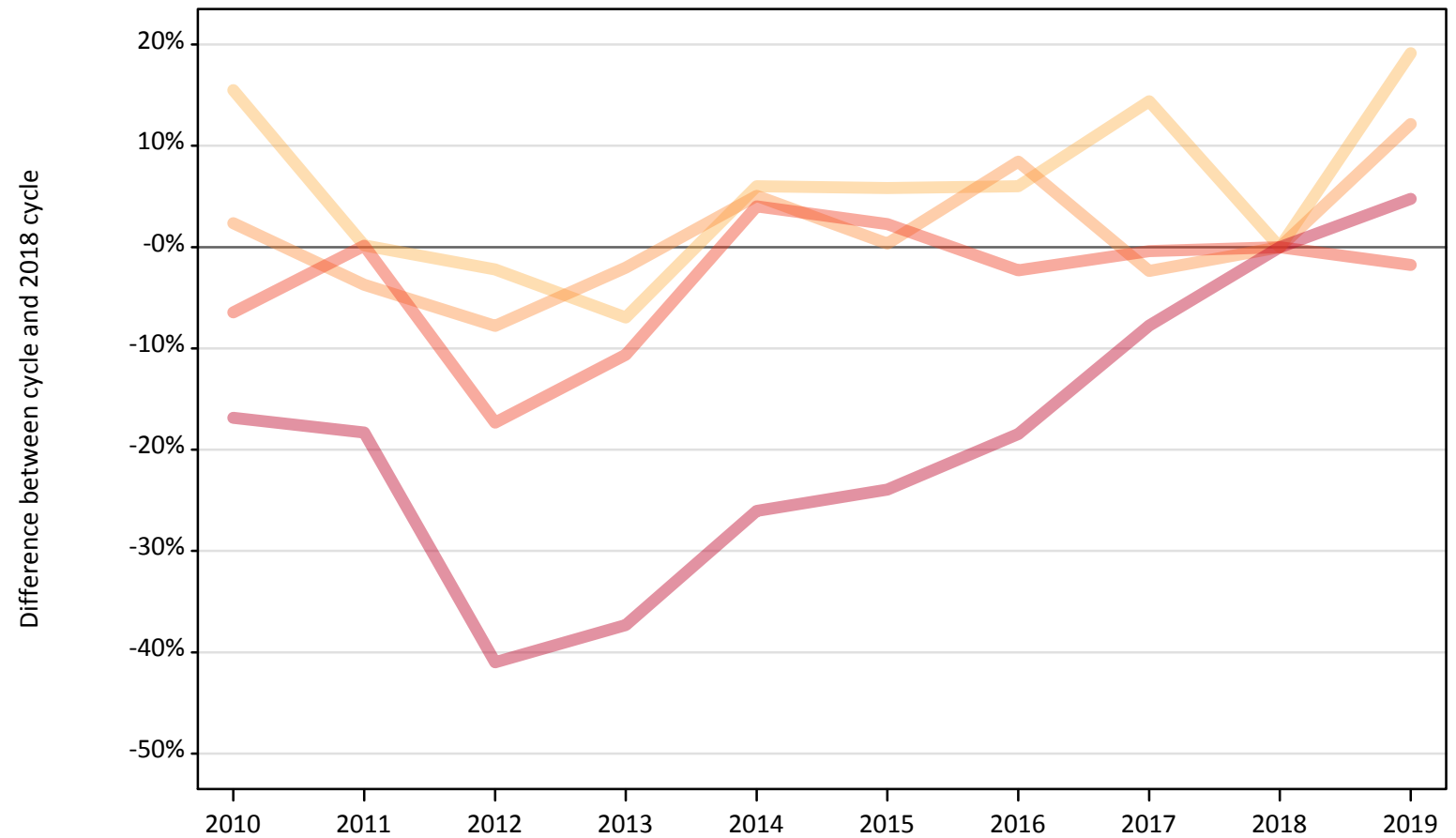
Domicile of applicant	Age group	2010	2011	2012	2013	2014	2015	2016	2017	2018	2019
Northern Ireland	17 and under										
	18	-39%	-46%	-36%	-14%	-21%	-10%	-3%	11%	0%	0%
	19	-65%	-66%	-54%	-17%	-14%	-22%	5%	-8%	0%	5%
	20 to 24	-50%	-53%	-51%	-17%	-1%	0%	12%	5%	0%	-6%
	25 and over	-47%	-66%	-62%	-26%	-8%	-12%	17%	2%	0%	22%

Note: The percentage change is not recorded in the above table for groups with fewer than 10 placed applicants in that cycle or in the 2018 cycle.

CB.9 Placed applicants to nursing from Scotland by age group at 5 days after A level results day

Selected age groups: difference between cycle and 2018 cycle

- 17 and under
- 18
- 19
- 20 to 24
- 25 and over



Note: The percentage change is not plotted in the above chart for groups with fewer than 30 placed applicants in any one cycle.

CB.10 Placed applicants to nursing from Scotland by age group at 5 days after A level results day

All age groups

Domicile of applicant	Age group	2010	2011	2012	2013	2014	2015	2016	2017	2018	2019
Scotland	17 and under	40	20	20	20	20	10	20	20	10	20
	18	630	550	540	510	580	580	580	630	550	650
	19	300	290	270	290	310	300	320	290	300	330
	20 to 24	700	750	620	670	770	760	730	740	740	730
	25 and over	1,150	1,130	820	870	1,020	1,050	1,130	1,280	1,380	1,450

CB.11 Placed applicants to nursing from Scotland by age group at 5 days after A level results day

Selected age groups: difference between cycle and 2018 cycle

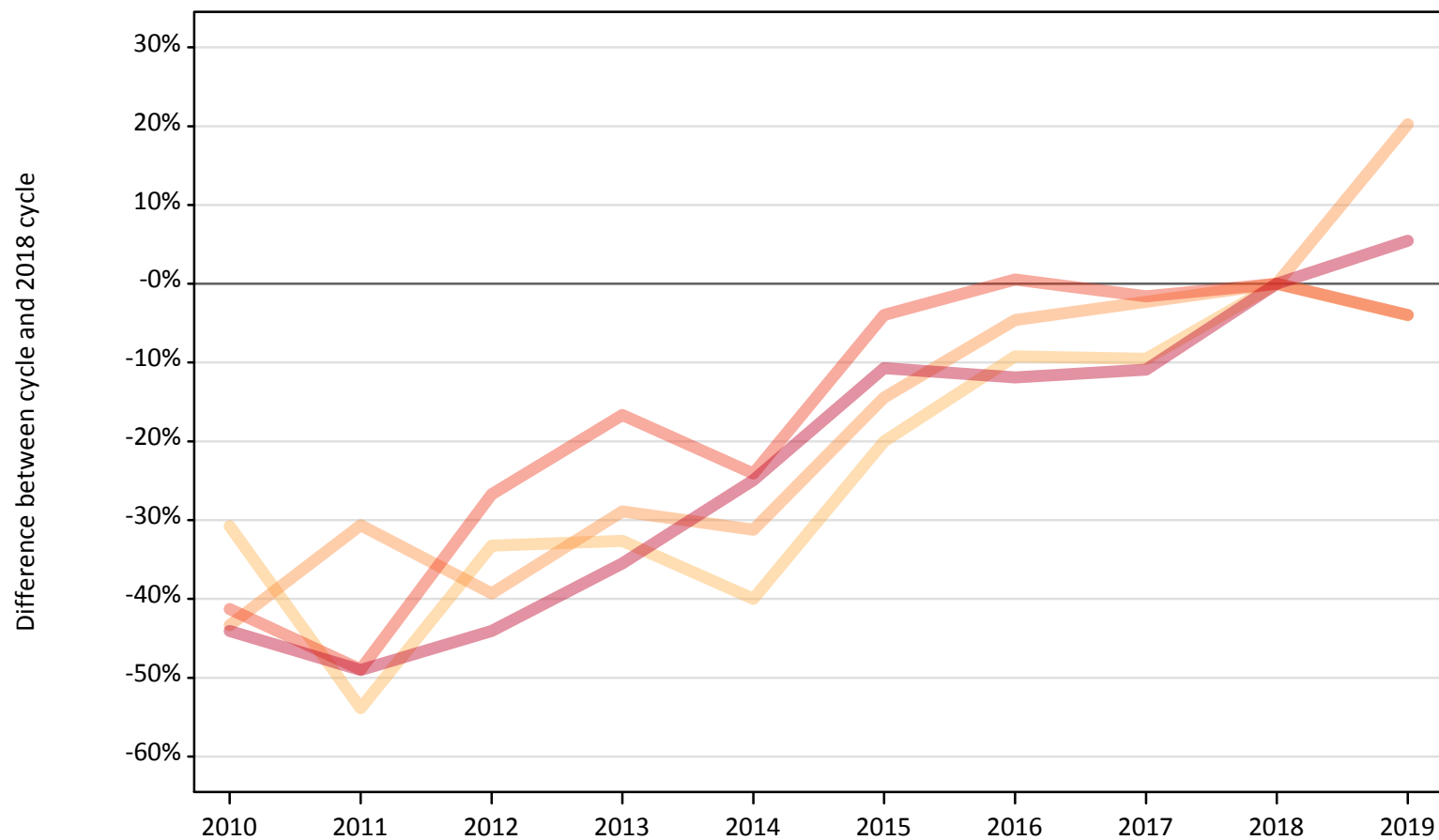
Domicile of applicant	Age group	2010	2011	2012	2013	2014	2015	2016	2017	2018	2019
Scotland	17 and under	193%	64%	50%	36%	21%	-14%	7%	43%	0%	43%
	18	16%	0%	-2%	-7%	6%	6%	6%	14%	0%	19%
	19	2%	-4%	-8%	-2%	5%	0%	8%	-2%	0%	12%
	20 to 24	-6%	0%	-17%	-11%	4%	2%	-2%	-0%	0%	-2%
	25 and over	-17%	-18%	-41%	-37%	-26%	-24%	-18%	-8%	0%	5%

Note: The percentage change is not recorded in the above table for groups with fewer than 10 placed applicants in that cycle or in the 2018 cycle.

CB.12 Placed applicants to nursing from Wales by age group at 5 days after A level results day

Selected age groups: difference between cycle and 2018 cycle

- 17 and under
- 18
- 19
- 20 to 24
- 25 and over



Note: The percentage change is not plotted in the above chart for groups with fewer than 30 placed applicants in any one cycle.

CB.13 Placed applicants to nursing from Wales by age group at 5 days after A level results day

All age groups

Domicile of applicant	Age group	2010	2011	2012	2013	2014	2015	2016	2017	2018	2019
Wales	17 and under	0	0	0	0	0	0	0	0	0	0
	18	230	150	220	220	200	260	300	290	330	310
	19	100	120	110	120	120	150	170	170	170	210
	20 to 24	220	190	280	320	290	360	380	370	380	360
	25 and over	340	310	340	390	460	540	530	540	610	640

CB.14 Placed applicants to nursing from Wales by age group at 5 days after A level results day

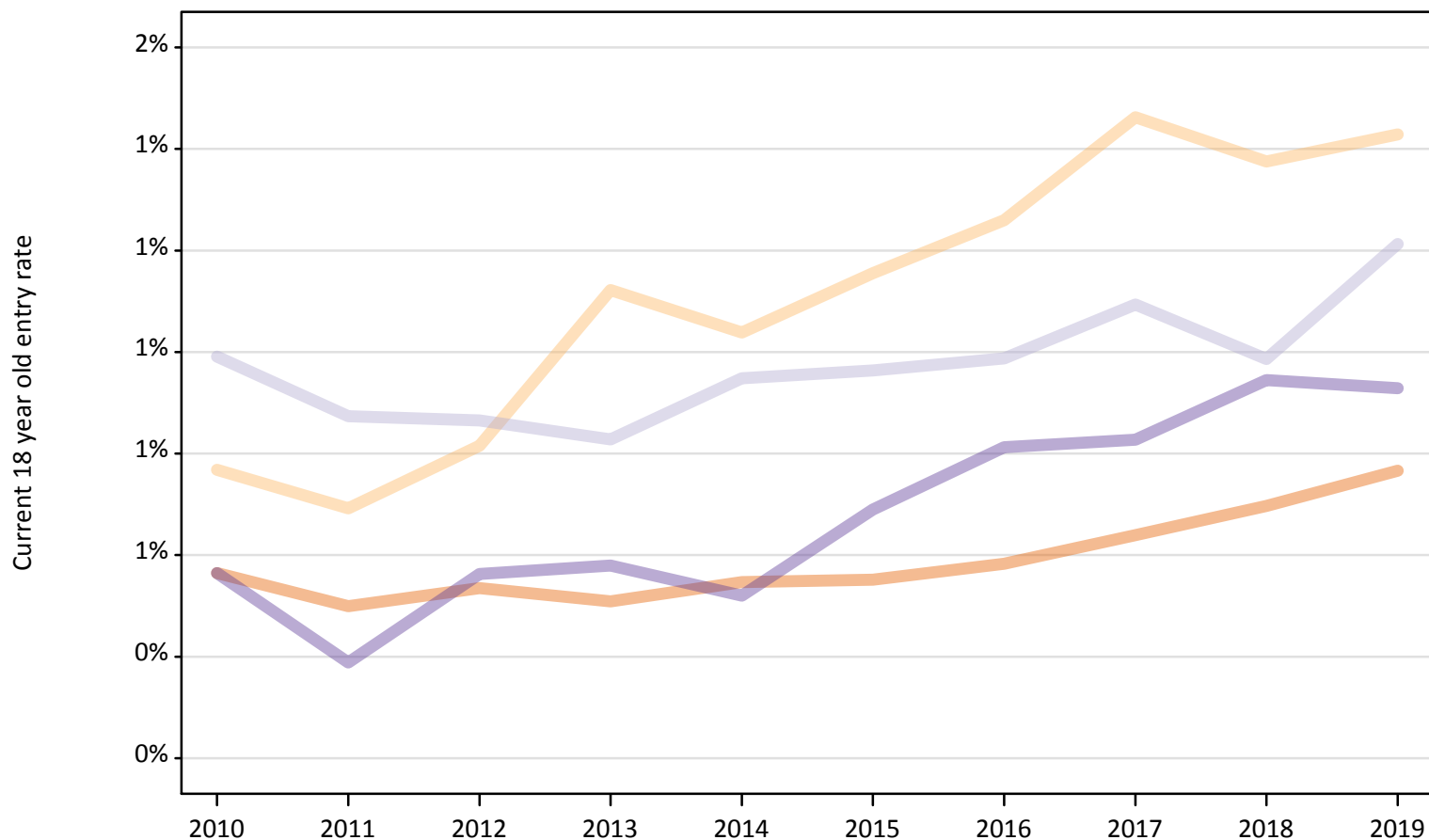
Selected age groups: difference between cycle and 2018 cycle

Domicile of applicant	Age group	2010	2011	2012	2013	2014	2015	2016	2017	2018	2019
Wales	17 and under										
	18	-31%	-54%	-33%	-33%	-40%	-20%	-9%	-10%	0%	-4%
	19	-43%	-31%	-39%	-29%	-31%	-14%	-5%	-2%	0%	20%
	20 to 24	-41%	-49%	-27%	-17%	-24%	-4%	1%	-2%	0%	-4%
	25 and over	-44%	-49%	-44%	-35%	-25%	-11%	-12%	-11%	0%	5%

Note: The percentage change is not recorded in the above table for groups with fewer than 10 placed applicants in that cycle or in the 2018 cycle.

CB.15 Entry rates to nursing for 18 year olds by UK country of domicile: 5 days after A level results day

Placed 18 year old applicants as a proportion of the 18 year old population



CB.16 Entry rates to nursing for 18 year olds by UK country of domicile: 5 days after A level results day

Placed 18 year old applicants as a proportion of the 18 year old population

Domicile of applicant	Age group	2010	2011	2012	2013	2014	2015	2016	2017	2018	2019
England	18	0.6%	0.5%	0.5%	0.5%	0.5%	0.6%	0.6%	0.6%	0.7%	0.8%
Northern Ireland	18	0.8%	0.7%	0.8%	1.1%	1.0%	1.2%	1.3%	1.5%	1.4%	1.4%
Scotland	18	1.0%	0.9%	0.9%	0.8%	0.9%	1.0%	1.0%	1.1%	1.0%	1.2%
Wales	18	0.6%	0.4%	0.6%	0.6%	0.5%	0.7%	0.8%	0.8%	0.9%	0.9%