

B7 Nursing analysis at 00:05 on Tuesday 20 August 2019 (5 days after A level results day)

SB.1 Placed applicants to nursing by sex from all domiciles by sex: 5 days after A level results day

Placed applicants to nursing by sex: change relative to 2018 cycle totals

Men
Women



Note: The percentage change is not plotted in the above chart for groups with fewer than 30 placed applicants in any one cycle.

SB.2 Placed applicants to nursing by sex from all domiciles by sex: 5 days after A level results day

Applicant Status	Sex	2010	2011	2012	2013	2014	2015	2016	2017	2018	2019
Placed	Men	2,240	1,910	1,750	1,750	1,980	2,020	2,300	1,950	1,910	2,000
	Women	20,420	17,740	17,820	18,530	20,520	20,320	21,850	21,290	20,870	21,730
	All	22,660	19,640	19,560	20,290	22,490	22,340	24,150	23,230	22,770	23,720

SB.3 Placed applicants to nursing by sex from all domiciles by sex: 5 days after A level results day

Placed applicants to nursing by sex: change relative to 2018 cycle totals

Applicant Status	Sex	2010	2011	2012	2013	2014	2015	2016	2017	2018	2019
Placed	Men	17%	0%	-8%	-8%	4%	6%	21%	2%	0%	5%
	Women	-2%	-15%	-15%	-11%	-2%	-3%	5%	2%	0%	4%
	All	-1%	-14%	-14%	-11%	-1%	-2%	6%	2%	0%	4%

Note: The percentage change is not recorded in the above table for groups with fewer than 10 placed applicants in that cycle or in the 2018 cycle.

SB.4 Placed applicants to nursing by sex from all domiciles by sex: 5 days after A level results day

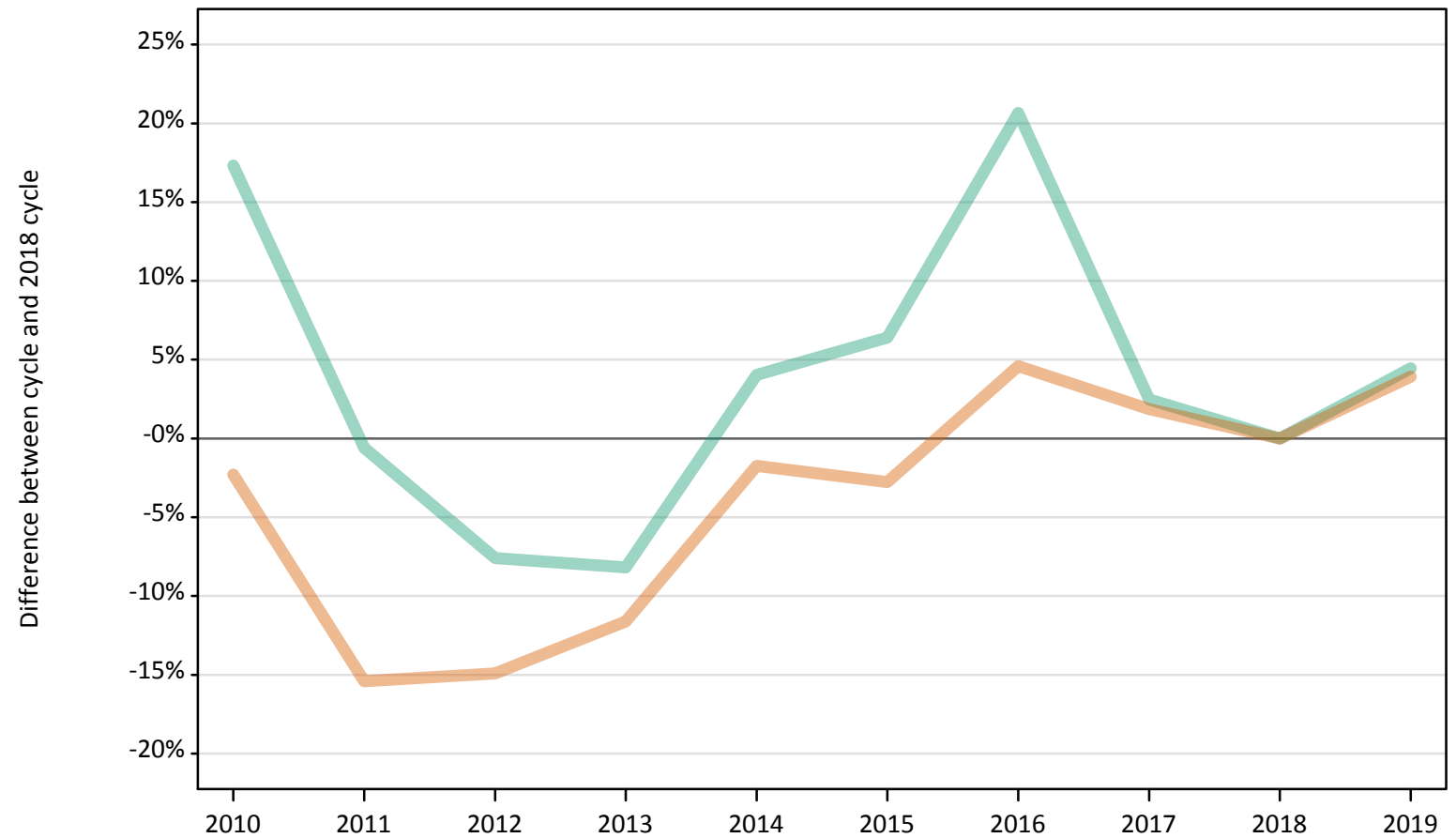
Placed applicants to nursing by sex: absolute change relative to 2018 cycle totals

Applicant Status	Sex	2010	2011	2012	2013	2014	2015	2016	2017	2018	2019
Placed	Men	330	0	-160	-150	70	120	390	40	0	90
	Women	-450	-3,130	-3,050	-2,340	-350	-550	980	420	0	860
	All	-120	-3,130	-3,210	-2,490	-280	-430	1,370	460	0	950

SB.5 Placed applicants to nursing by sex from the UK by sex: 5 days after A level results day

Placed applicants to nursing by sex: change relative to 2018 cycle totals

Men
Women



Note: The percentage change is not plotted in the above chart for groups with fewer than 30 placed applicants in any one cycle.

SB.6 Placed applicants to nursing by sex from the UK by sex: 5 days after A level results day

Applicant Status	Sex	2010	2011	2012	2013	2014	2015	2016	2017	2018	2019
Placed	Men	2,180	1,850	1,720	1,710	1,930	1,980	2,240	1,910	1,860	1,940
	Women	19,980	17,300	17,400	18,080	20,100	19,880	21,390	20,830	20,450	21,250
	All	22,160	19,150	19,120	19,780	22,030	21,860	23,630	22,740	22,310	23,200

SB.7 Placed applicants to nursing by sex from the UK by sex: 5 days after A level results day

Placed applicants to nursing by sex: change relative to 2018 cycle totals

Applicant Status	Sex	2010	2011	2012	2013	2014	2015	2016	2017	2018	2019
Placed	Men	17%	-1%	-8%	-8%	4%	6%	21%	2%	0%	4%
	Women	-2%	-15%	-15%	-12%	-2%	-3%	5%	2%	0%	4%
	All	-1%	-14%	-14%	-11%	-1%	-2%	6%	2%	0%	4%

Note: The percentage change is not recorded in the above table for groups with fewer than 10 placed applicants in that cycle or in the 2018 cycle.

SB.8 Placed applicants to nursing by sex from the UK by sex: 5 days after A level results day

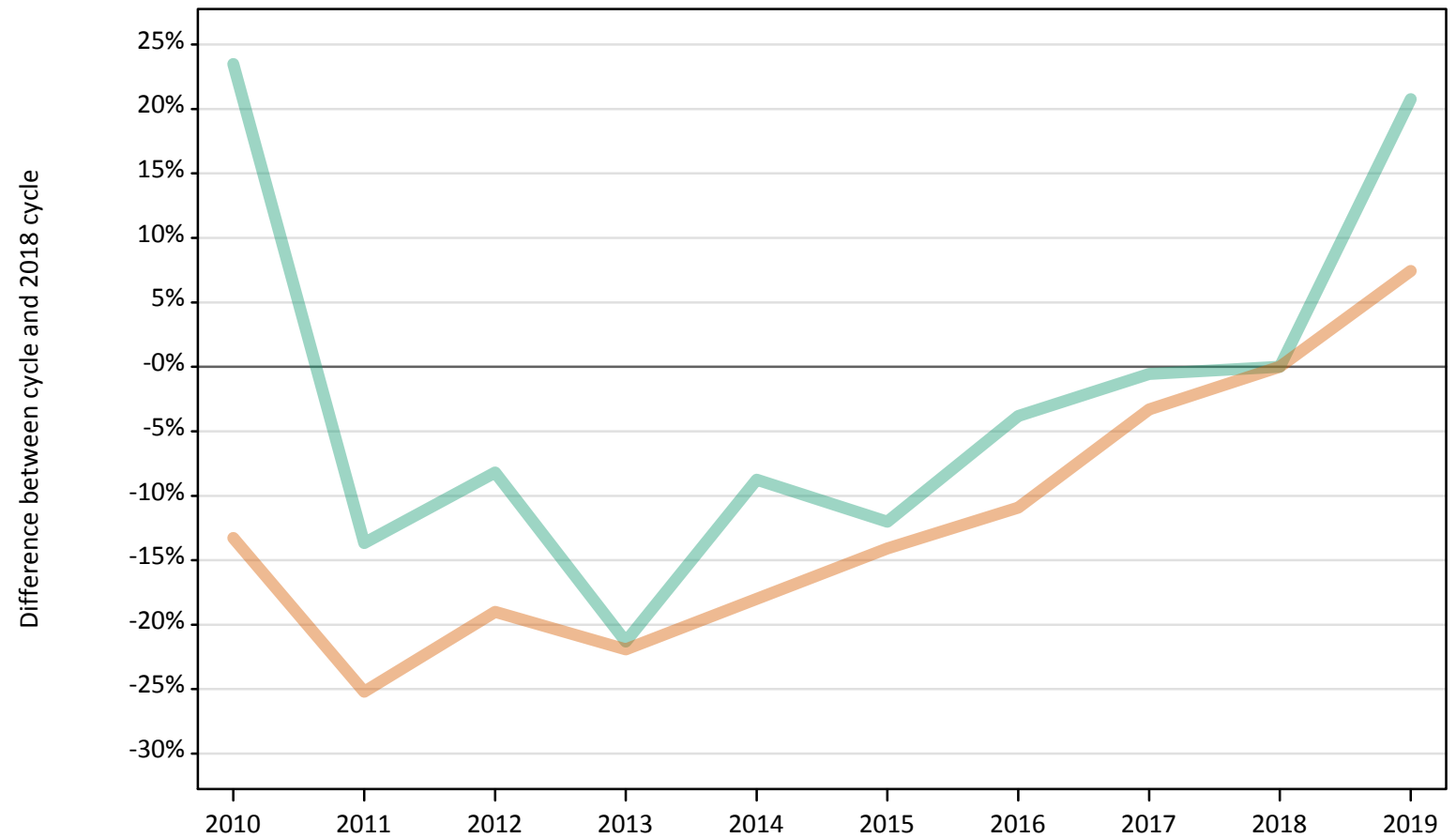
Placed applicants to nursing by sex: absolute change relative to 2018 cycle totals

Applicant Status	Sex	2010	2011	2012	2013	2014	2015	2016	2017	2018	2019
Placed	Men	320	-10	-140	-150	80	120	380	50	0	80
	Women	-470	-3,150	-3,050	-2,370	-360	-570	940	380	0	800
	All	-150	-3,160	-3,190	-2,530	-280	-450	1,320	430	0	890

SB.9 Placed 18 year old applicants to nursing from the UK by sex: 5 days after A level results day

Placed 18 year old applicants to nursing: change relative to 2018 cycle totals

Men
Women



Note: The percentage change is not plotted in the above chart for groups with fewer than 30 placed applicants in any one cycle.

SB.10 Placed 18 year old applicants to nursing from the UK by sex: 5 days after A level results day

Applicant Status	Sex	2010	2011	2012	2013	2014	2015	2016	2017	2018	2019
Placed	Men	230	160	170	140	170	160	180	180	180	220
	Women	4,560	3,930	4,260	4,100	4,310	4,510	4,680	5,080	5,250	5,650
	All	4,780	4,090	4,420	4,250	4,480	4,680	4,860	5,260	5,440	5,870

SB.11 Placed 18 year old applicants to nursing from the UK by sex: 5 days after A level results day

Placed 18 year old applicants to nursing: change relative to 2018 cycle totals

Applicant Status	Sex	2010	2011	2012	2013	2014	2015	2016	2017	2018	2019
Placed	Men	23%	-14%	-8%	-21%	-9%	-12%	-4%	-1%	0%	21%
	Women	-13%	-25%	-19%	-22%	-18%	-14%	-11%	-3%	0%	7%
	All	-12%	-25%	-19%	-22%	-18%	-14%	-11%	-3%	0%	8%

Note: The percentage change is not recorded in the above table for groups with fewer than 10 placed applicants in that cycle or in the 2018 cycle.

SB.12 Placed 18 year old applicants to nursing from the UK by sex: 5 days after A level results day

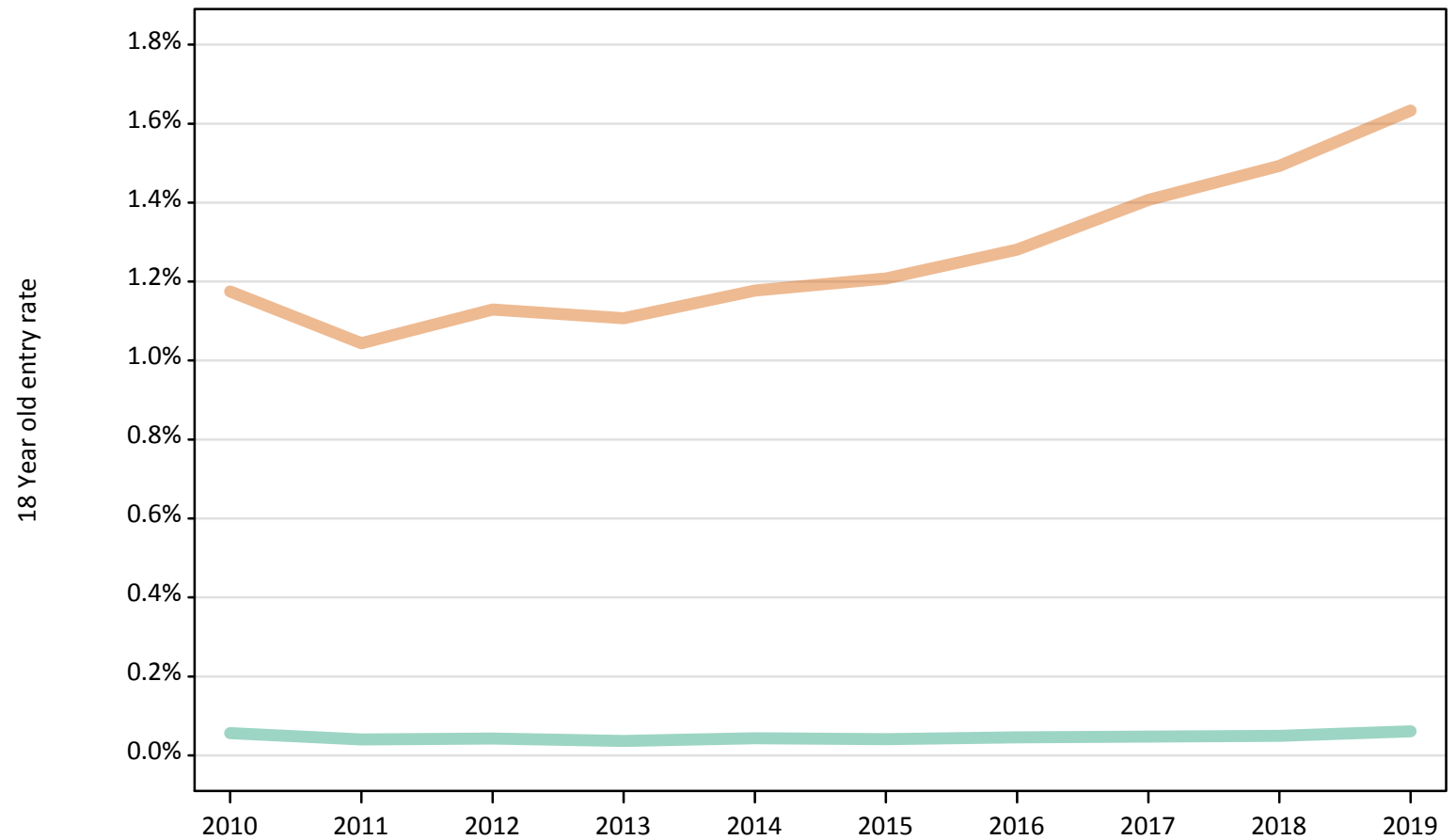
Placed 18 year old applicants to nursing: absolute change relative to 2018 cycle totals

Applicant Status	Sex	2010	2011	2012	2013	2014	2015	2016	2017	2018	2019
Placed	Men	40	-30	-20	-40	-20	-20	-10	0	0	40
	Women	-700	-1,320	-1,000	-1,150	-950	-740	-570	-170	0	390
	All	-650	-1,350	-1,010	-1,190	-960	-760	-580	-180	0	430

SB.13 Placed 18 year old applicants to nursing from the UK by sex: 5 days after A level results day

Placed 18 year old applicants to nursing: entry rate

Men
Women



SB.14 Placed 18 year old applicants to nursing from the UK by sex: 5 days after A level results day

Placed 18 year old applicants to nursing: entry rate

Applicant Status	Sex	2010	2011	2012	2013	2014	2015	2016	2017	2018	2019
Placed	Men	0.1%	0.0%	0.0%	0.0%	0.0%	0.0%	0.0%	0.0%	0.0%	0.1%
	Women	1.2%	1.0%	1.1%	1.1%	1.2%	1.2%	1.3%	1.4%	1.5%	1.6%
	All	0.6%	0.5%	0.6%	0.6%	0.6%	0.6%	0.6%	0.7%	0.8%	0.8%

SB.15 Placed 18 year old applicants to nursing from the UK by sex: 5 days after A level results day

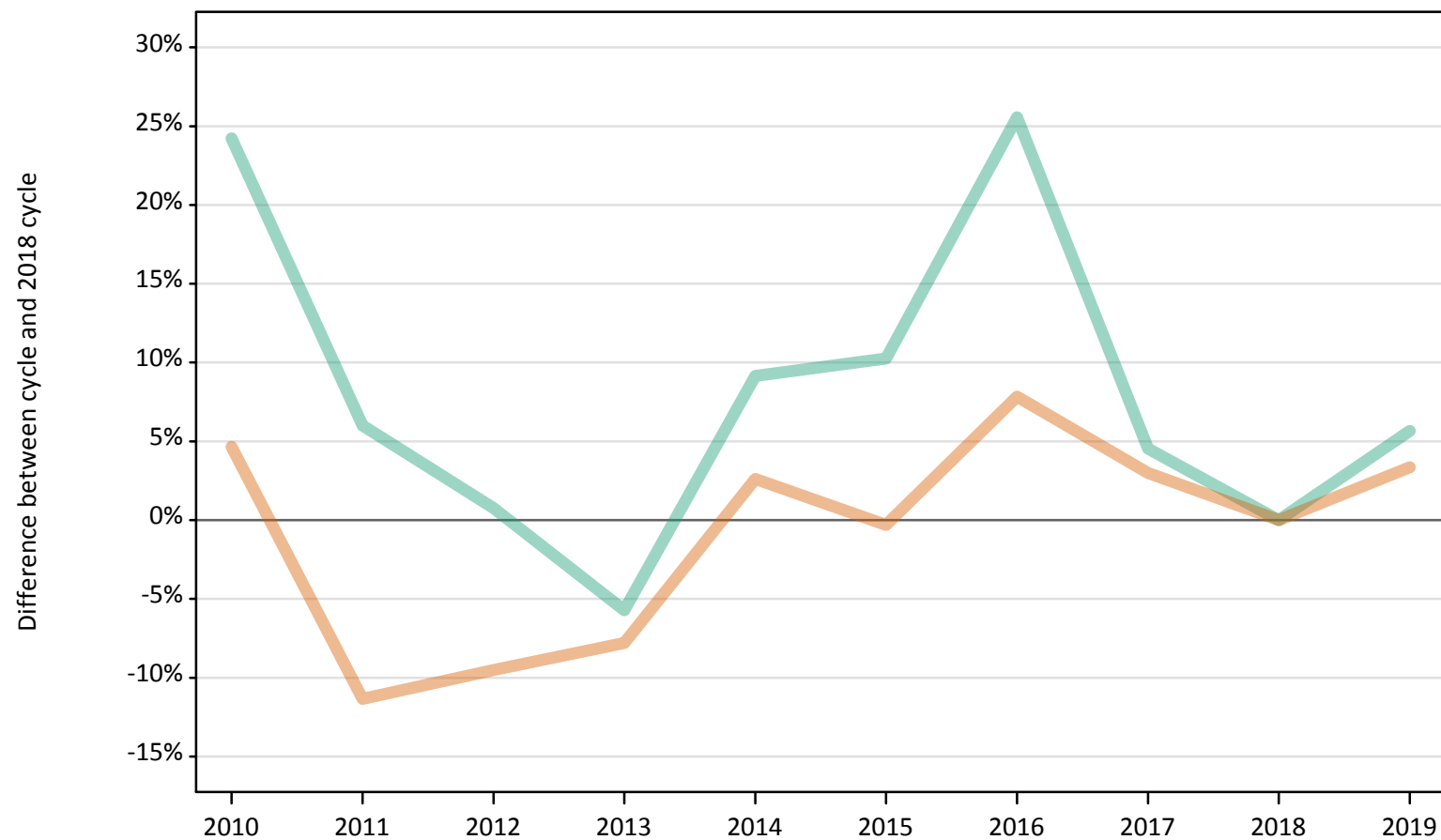
Placed 18 year old applicants to nursing: entry rate (indexed to 100 = Men)

Applicant Status	Sex	2010	2011	2012	2013	2014	2015	2016	2017	2018	2019
Placed	Men	100	100	100	100	100	100	100	100	100	100
	Women	2,088	2,599	2,665	3,001	2,728	2,944	2,796	2,936	3,023	2,678

SB.16 Placed applicants to nursing by sex from England by sex: 5 days after A level results day

Placed applicants to nursing by sex: change relative to 2018 cycle totals

Men
Women



Note: The percentage change is not plotted in the above chart for groups with fewer than 30 placed applicants in any one cycle.

SB.17 Placed applicants to nursing by sex from England by sex: 5 days after A level results day

Applicant Status	Sex	2010	2011	2012	2013	2014	2015	2016	2017	2018	2019
Placed	Men	1,780	1,520	1,440	1,350	1,560	1,580	1,800	1,500	1,430	1,510
	Women	16,190	13,710	13,990	14,260	15,870	15,420	16,680	15,930	15,470	15,980
	All	17,960	15,230	15,440	15,610	17,430	17,000	18,480	17,430	16,900	17,500

SB.18 Placed applicants to nursing by sex from England by sex: 5 days after A level results day

Placed applicants to nursing by sex: change relative to 2018 cycle totals

Applicant Status	Sex	2010	2011	2012	2013	2014	2015	2016	2017	2018	2019
Placed	Men	24%	6%	1%	-6%	9%	10%	26%	5%	0%	6%
	Women	5%	-11%	-10%	-8%	3%	-0%	8%	3%	0%	3%
	All	6%	-10%	-9%	-8%	3%	1%	9%	3%	0%	4%

Note: The percentage change is not recorded in the above table for groups with fewer than 10 placed applicants in that cycle or in the 2018 cycle.

SB.19 Placed applicants to nursing by sex from England by sex: 5 days after A level results day

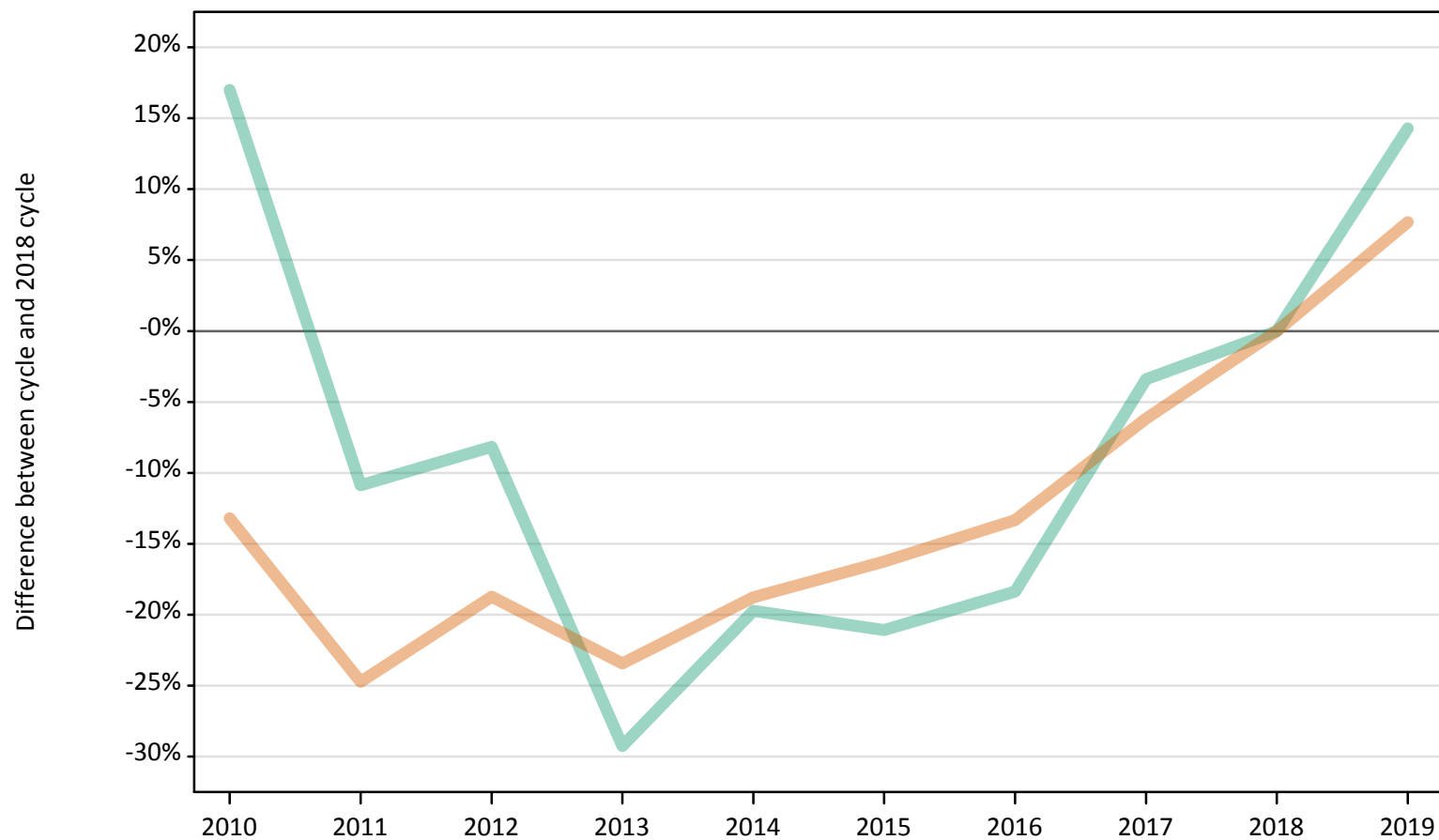
Placed applicants to nursing by sex: absolute change relative to 2018 cycle totals

Applicant Status	Sex	2010	2011	2012	2013	2014	2015	2016	2017	2018	2019
Placed	Men	350	90	10	-80	130	150	370	70	0	80
	Women	720	-1,750	-1,470	-1,210	400	-50	1,210	460	0	520
	All	1,070	-1,670	-1,460	-1,290	540	100	1,580	530	0	600

SB.20 Placed 18 year old applicants to nursing from England by sex: 5 days after A level results day

Placed 18 year old applicants to nursing: change relative to 2018 cycle totals

Men
Women



Note: The percentage change is not plotted in the above chart for groups with fewer than 30 placed applicants in any one cycle.

SB.21 Placed 18 year old applicants to nursing from England by sex: 5 days after A level results day

Applicant Status	Sex	2010	2011	2012	2013	2014	2015	2016	2017	2018	2019
Placed	Men	170	130	140	100	120	120	120	140	150	170
	Women	3,560	3,090	3,330	3,140	3,330	3,430	3,550	3,850	4,100	4,410
	All	3,730	3,220	3,470	3,240	3,450	3,550	3,670	3,990	4,250	4,580

SB.22 Placed 18 year old applicants to nursing from England by sex: 5 days after A level results day

Placed 18 year old applicants to nursing: change relative to 2018 cycle totals

Applicant Status	Sex	2010	2011	2012	2013	2014	2015	2016	2017	2018	2019
Placed	Men	17%	-11%	-8%	-29%	-20%	-21%	-18%	-3%	0%	14%
	Women	-13%	-25%	-19%	-23%	-19%	-16%	-13%	-6%	0%	8%
	All	-12%	-24%	-18%	-24%	-19%	-16%	-13%	-6%	0%	8%

Note: The percentage change is not recorded in the above table for groups with fewer than 10 placed applicants in that cycle or in the 2018 cycle.

SB.23 Placed 18 year old applicants to nursing from England by sex: 5 days after A level results day

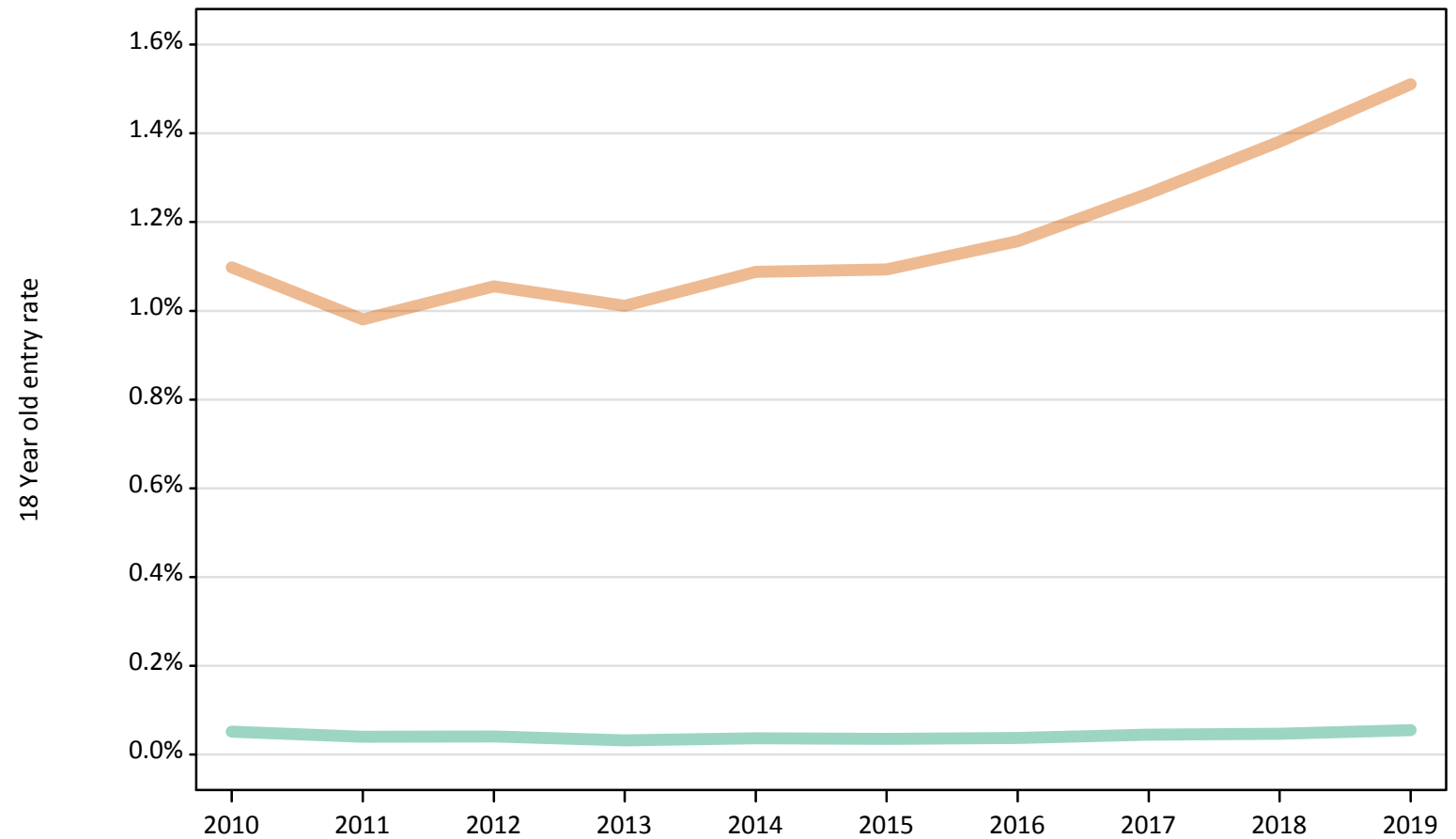
Placed 18 year old applicants to nursing: absolute change relative to 2018 cycle totals

Applicant Status	Sex	2010	2011	2012	2013	2014	2015	2016	2017	2018	2019
Placed	Men	30	-20	-10	-40	-30	-30	-30	-10	0	20
	Women	-540	-1,010	-770	-960	-770	-670	-550	-250	0	320
	All	-520	-1,030	-780	-1,000	-800	-700	-570	-260	0	340

SB.24 Placed 18 year old applicants to nursing from England by sex: 5 days after A level results day

Placed 18 year old applicants to nursing: entry rate

Men
Women



SB.25 Placed 18 year old applicants to nursing from England by sex: 5 days after A level results day

Placed 18 year old applicants to nursing: entry rate

Applicant Status	Sex	2010	2011	2012	2013	2014	2015	2016	2017	2018	2019
Placed	Men	0.1%	0.0%	0.0%	0.0%	0.0%	0.0%	0.0%	0.0%	0.0%	0.1%
	Women	1.1%	1.0%	1.1%	1.0%	1.1%	1.1%	1.2%	1.3%	1.4%	1.5%
	All	0.6%	0.5%	0.5%	0.5%	0.5%	0.6%	0.6%	0.6%	0.7%	0.8%

SB.26 Placed 18 year old applicants to nursing from England by sex: 5 days after A level results day

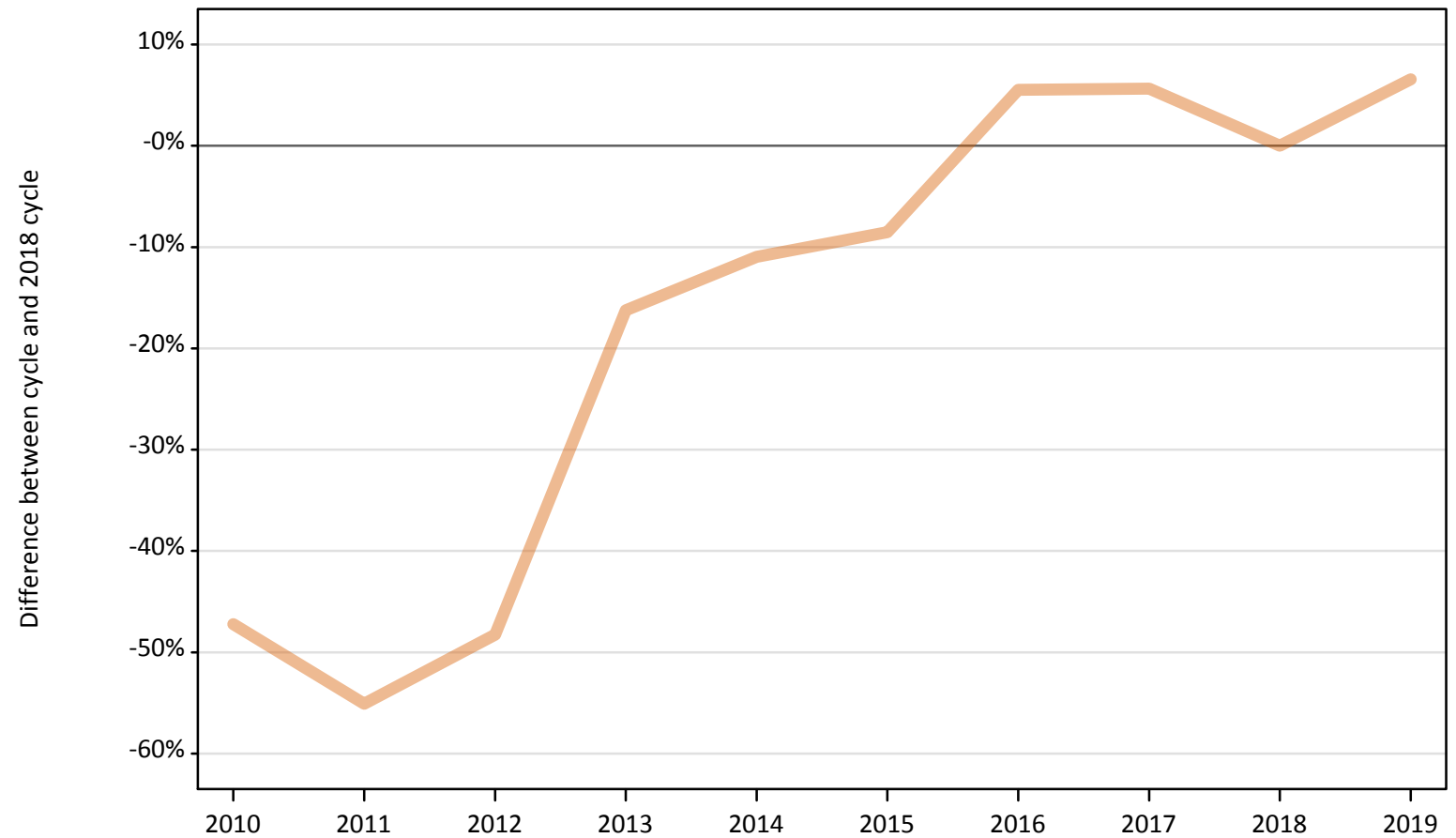
Placed 18 year old applicants to nursing: entry rate (indexed to 100 = Men)

Applicant Status	Sex	2010	2011	2012	2013	2014	2015	2016	2017	2018	2019
Placed	Men	100	100	100	100	100	100	100	100	100	100
	Women	2,145	2,464	2,597	3,177	2,986	3,106	3,112	2,847	2,936	2,750

SB.27 Placed applicants to nursing by sex from Northern Ireland by sex: 5 days after A level results day

Placed applicants to nursing by sex: change relative to 2018 cycle totals

Men
Women



Note: The percentage change is not plotted in the above chart for groups with fewer than 30 placed applicants in any one cycle.

SB.28 Placed applicants to nursing by sex from Northern Ireland by sex: 5 days after A level results day

Applicant Status	Sex	2010	2011	2012	2013	2014	2015	2016	2017	2018	2019
Placed	Men	30	30	30	50	60	60	100	70	80	70
	Women	460	390	450	730	770	790	920	920	870	930
	All	490	420	480	780	840	850	1,010	980	950	990

SB.29 Placed applicants to nursing by sex from Northern Ireland by sex: 5 days after A level results day

Placed applicants to nursing by sex: change relative to 2018 cycle totals

Applicant Status	Sex	2010	2011	2012	2013	2014	2015	2016	2017	2018	2019
Placed	Men	-56%	-67%	-56%	-38%	-19%	-27%	22%	-14%	0%	-15%
	Women	-47%	-55%	-48%	-16%	-11%	-9%	6%	6%	0%	7%
	All	-48%	-56%	-49%	-18%	-12%	-10%	7%	4%	0%	5%

Note: The percentage change is not recorded in the above table for groups with fewer than 10 placed applicants in that cycle or in the 2018 cycle.

SB.30 Placed applicants to nursing by sex from Northern Ireland by sex: 5 days after A level results day

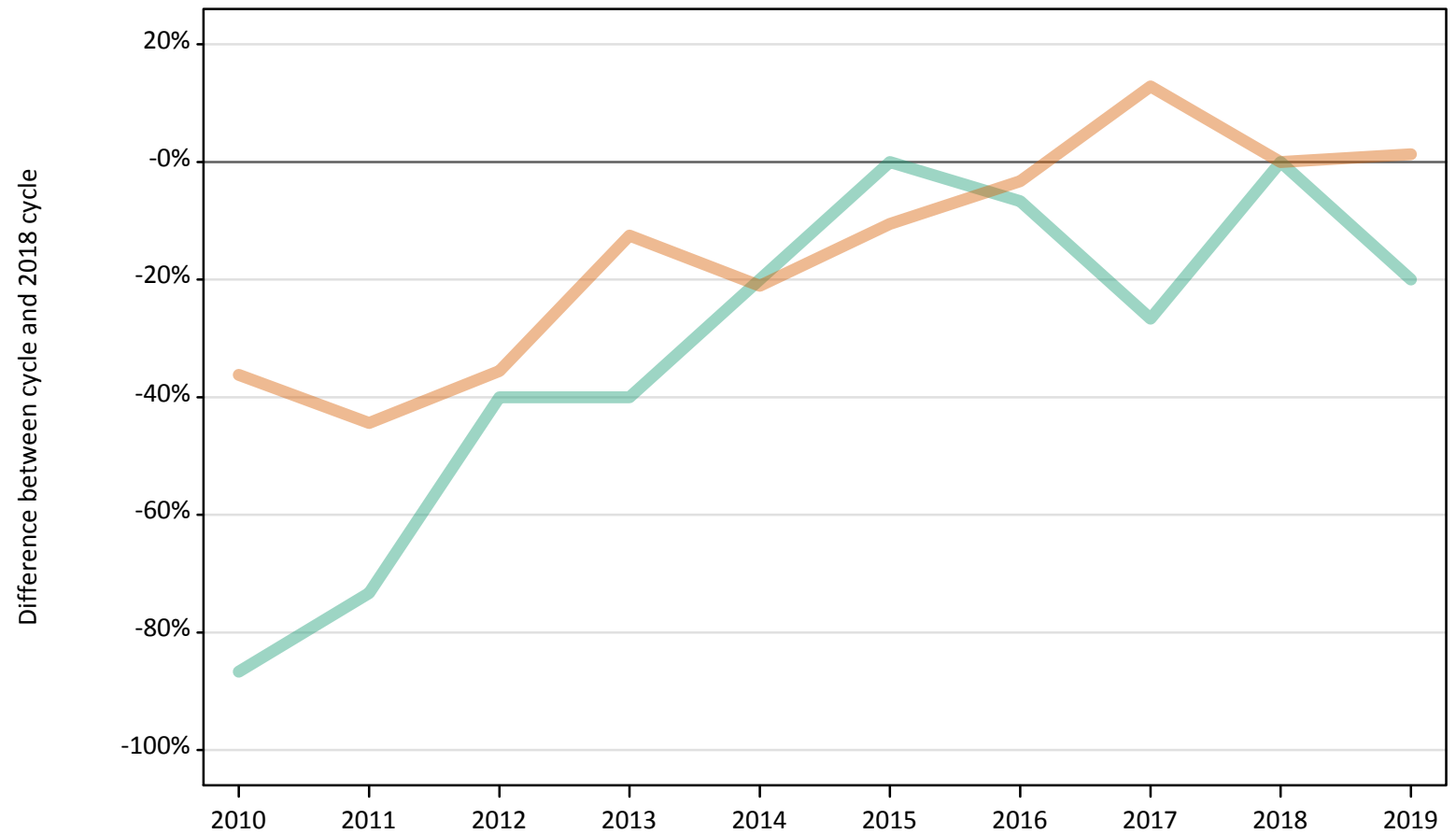
Placed applicants to nursing by sex: absolute change relative to 2018 cycle totals

Applicant Status	Sex	2010	2011	2012	2013	2014	2015	2016	2017	2018	2019
Placed	Men	-40	-50	-40	-30	-20	-20	20	-10	0	-10
	Women	-410	-480	-420	-140	-100	-70	50	50	0	60
	All	-450	-530	-460	-170	-110	-100	70	40	0	50

SB.31 Placed 18 year old applicants to nursing from Northern Ireland by sex: 5 days after A level results day

Placed 18 year old applicants to nursing: change relative to 2018 cycle totals

Men
Women



Note: The percentage change is not plotted in the above chart for groups with fewer than 30 placed applicants in any one cycle.

SB.32 Placed 18 year old applicants to nursing from Northern Ireland by sex: 5 days after A level results day

Applicant Status	Sex	2010	2011	2012	2013	2014	2015	2016	2017	2018	2019
Placed	Men	0	0	10	10	10	20	10	10	20	10
	Women	190	170	200	270	240	270	290	340	300	310
	All	200	170	210	280	250	290	310	350	320	320

SB.33 Placed 18 year old applicants to nursing from Northern Ireland by sex: 5 days after A level results day

Placed 18 year old applicants to nursing: change relative to 2018 cycle totals

Applicant Status	Sex	2010	2011	2012	2013	2014	2015	2016	2017	2018	2019
Placed	Men					-20%	0%	-7%	-27%	0%	-20%
	Women	-36%	-44%	-36%	-13%	-21%	-11%	-3%	13%	0%	1%
	All	-39%	-46%	-36%	-14%	-21%	-10%	-3%	11%	0%	0%

Note: The percentage change is not recorded in the above table for groups with fewer than 10 placed applicants in that cycle or in the 2018 cycle.

SB.34 Placed 18 year old applicants to nursing from Northern Ireland by sex: 5 days after A level results day

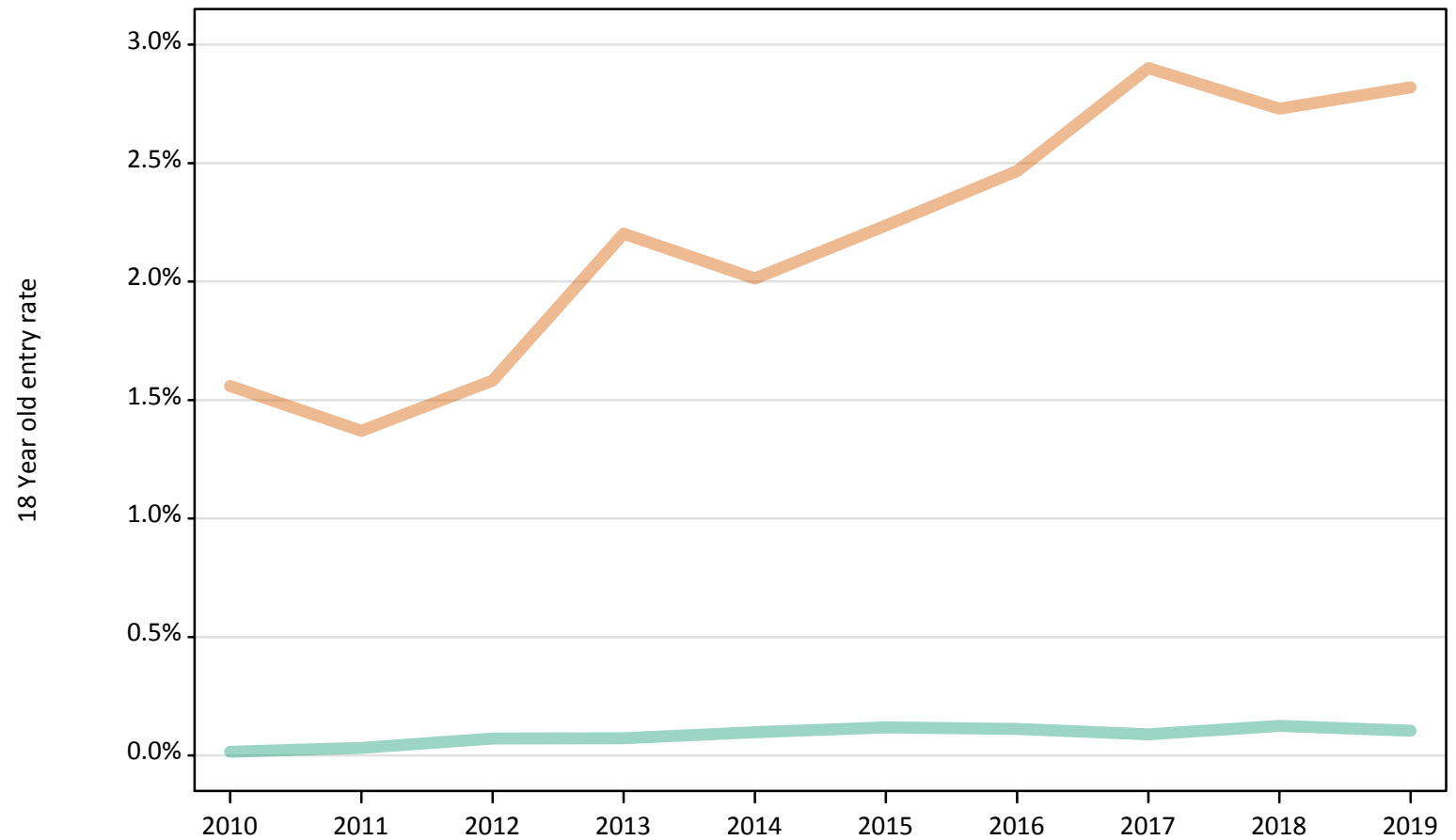
Placed 18 year old applicants to nursing: absolute change relative to 2018 cycle totals

Applicant Status	Sex	2010	2011	2012	2013	2014	2015	2016	2017	2018	2019
Placed	Men	-10	-10	-10	-10	0	0	0	0	0	0
	Women	-110	-140	-110	-40	-60	-30	-10	40	0	0
	All	-120	-150	-110	-40	-70	-30	-10	40	0	0

SB.35 Placed 18 year old applicants to nursing from Northern Ireland by sex: 5 days after A level results day

Placed 18 year old applicants to nursing: entry rate

Men
Women



SB.36 Placed 18 year old applicants to nursing from Northern Ireland by sex: 5 days after A level results day

Placed 18 year old applicants to nursing: entry rate

Applicant Status	Sex	2010	2011	2012	2013	2014	2015	2016	2017	2018	2019
Placed	Men	0.0%	0.0%	0.1%	0.1%	0.1%	0.1%	0.1%	0.1%	0.1%	0.1%
	Women	1.6%	1.4%	1.6%	2.2%	2.0%	2.2%	2.5%	2.9%	2.7%	2.8%
	All	0.8%	0.7%	0.8%	1.1%	1.0%	1.2%	1.3%	1.5%	1.4%	1.4%

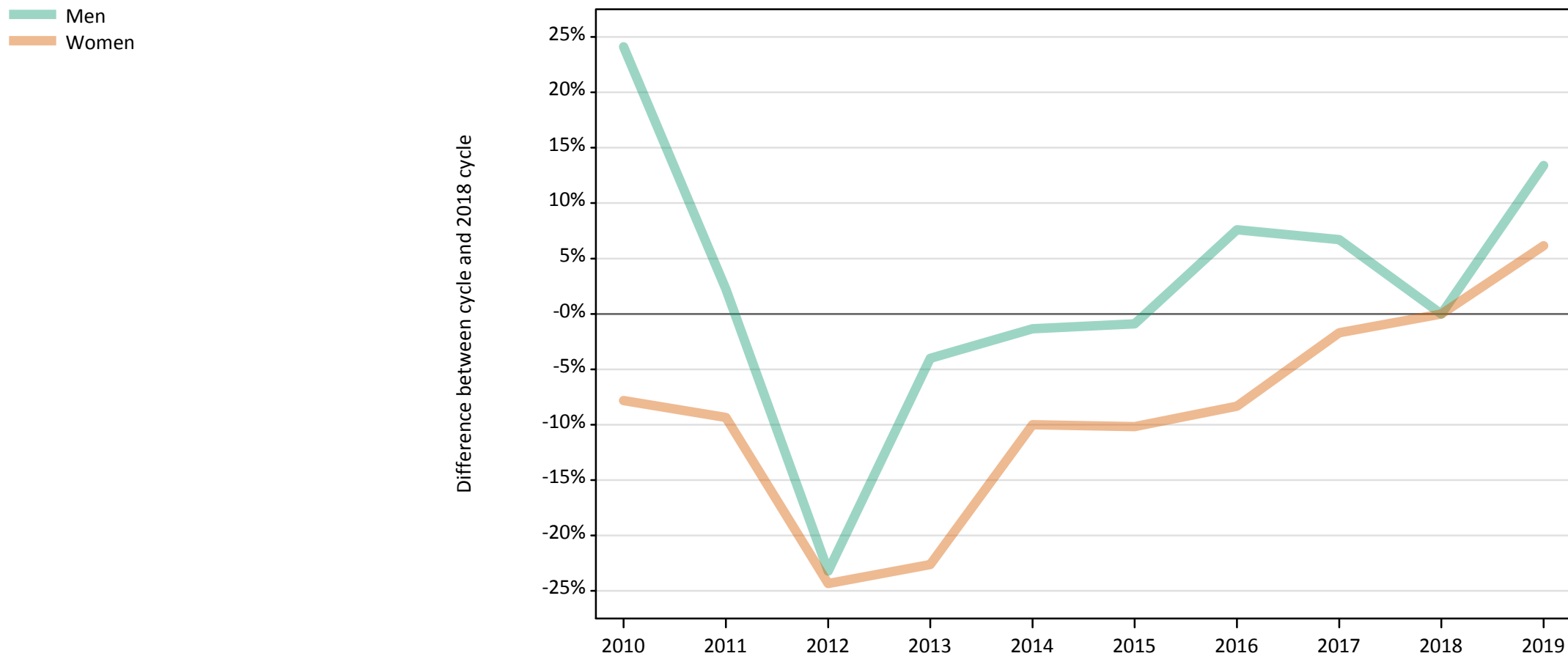
SB.37 Placed 18 year old applicants to nursing from Northern Ireland by sex: 5 days after A level results day

Placed 18 year old applicants to nursing: entry rate (indexed to 100 = Men)

Applicant Status	Sex	2010	2011	2012	2013	2014	2015	2016	2017	2018	2019
Placed	Men	100	100	100	100	100	100	100	100	100	100
	Women	10,193	4,334	2,242	3,044	2,070	1,891	2,209	3,266	2,195	2,697

SB.38 Placed applicants to nursing by sex from Scotland by sex: 5 days after A level results day

Placed applicants to nursing by sex: change relative to 2018 cycle totals



Note: The percentage change is not plotted in the above chart for groups with fewer than 30 placed applicants in any one cycle.

SB.39 Placed applicants to nursing by sex from Scotland by sex: 5 days after A level results day

Applicant Status	Sex	2010	2011	2012	2013	2014	2015	2016	2017	2018	2019
Placed	Men	280	230	170	220	220	220	240	240	220	250
	Women	2,550	2,500	2,090	2,140	2,490	2,480	2,530	2,710	2,760	2,930
	All	2,820	2,730	2,260	2,350	2,710	2,700	2,770	2,950	2,990	3,190

SB.40 Placed applicants to nursing by sex from Scotland by sex: 5 days after A level results day

Placed applicants to nursing by sex: change relative to 2018 cycle totals

Applicant Status	Sex	2010	2011	2012	2013	2014	2015	2016	2017	2018	2019
Placed	Men	24%	2%	-23%	-4%	-1%	-1%	8%	7%	0%	13%
	Women	-8%	-9%	-24%	-23%	-10%	-10%	-8%	-2%	0%	6%
	All	-5%	-8%	-24%	-21%	-9%	-9%	-7%	-1%	0%	7%

Note: The percentage change is not recorded in the above table for groups with fewer than 10 placed applicants in that cycle or in the 2018 cycle.

SB.41 Placed applicants to nursing by sex from Scotland by sex: 5 days after A level results day

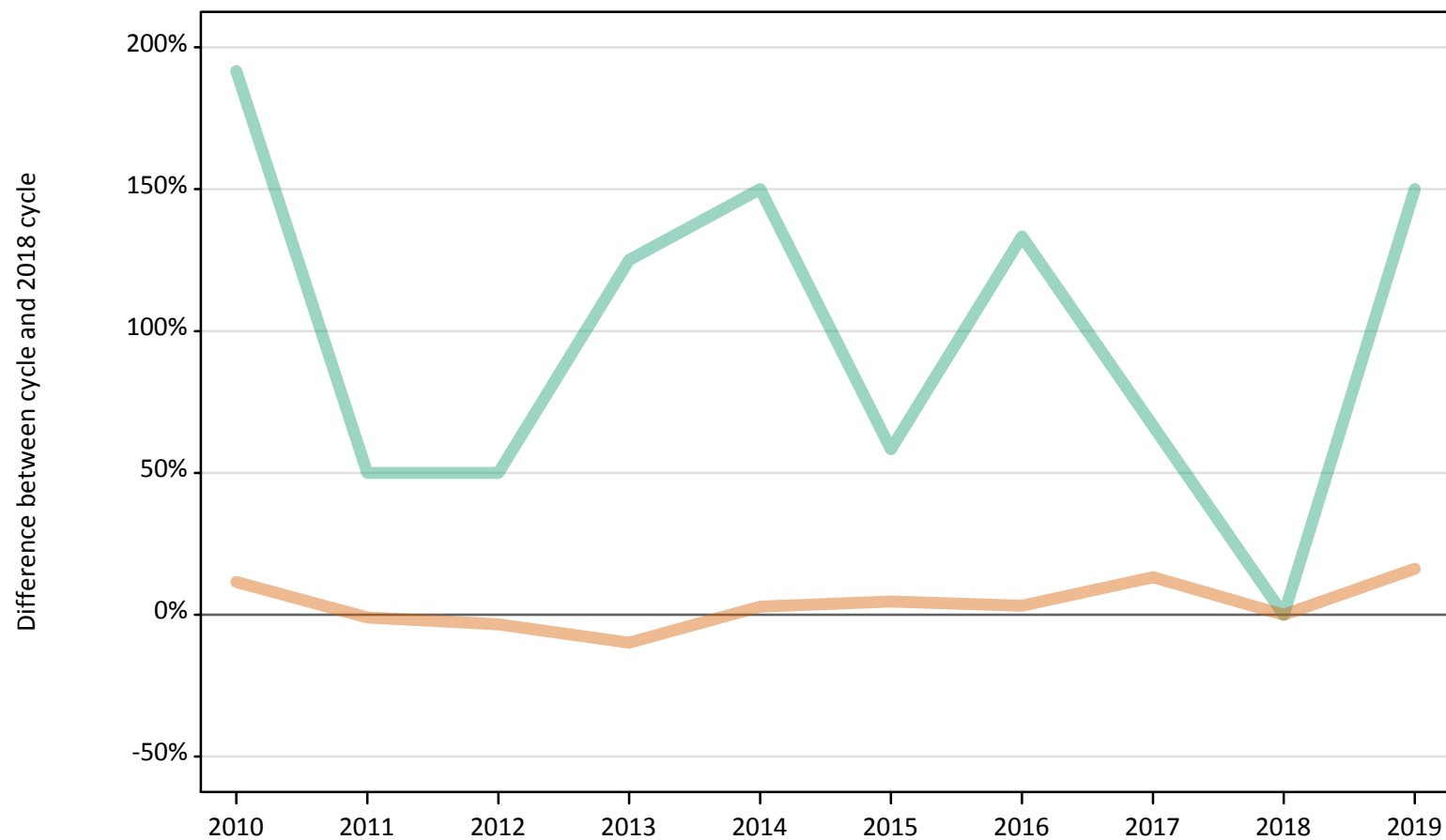
Placed applicants to nursing by sex: absolute change relative to 2018 cycle totals

Applicant Status	Sex	2010	2011	2012	2013	2014	2015	2016	2017	2018	2019
Placed	Men	50	10	-50	-10	0	0	20	20	0	30
	Women	-220	-260	-670	-630	-280	-280	-230	-50	0	170
	All	-160	-250	-720	-630	-280	-280	-210	-30	0	200

SB.42 Placed 18 year old applicants to nursing from Scotland by sex: 5 days after A level results day

Placed 18 year old applicants to nursing: change relative to 2018 cycle totals

Men
Women



Note: The percentage change is not plotted in the above chart for groups with fewer than 30 placed applicants in any one cycle.

SB.43 Placed 18 year old applicants to nursing from Scotland by sex: 5 days after A level results day

Applicant Status	Sex	2010	2011	2012	2013	2014	2015	2016	2017	2018	2019
Placed	Men	40	20	20	30	30	20	30	20	10	30
	Women	600	530	520	480	550	560	550	610	540	620
	All	630	550	540	510	580	580	580	630	550	650

SB.44 Placed 18 year old applicants to nursing from Scotland by sex: 5 days after A level results day

Placed 18 year old applicants to nursing: change relative to 2018 cycle totals

Applicant Status	Sex	2010	2011	2012	2013	2014	2015	2016	2017	2018	2019
Placed	Men	192%	50%	50%	125%	150%	58%	133%	67%	0%	150%
	Women	12%	-1%	-3%	-10%	3%	5%	3%	13%	0%	16%
	All	16%	0%	-2%	-7%	6%	6%	6%	14%	0%	19%

Note: The percentage change is not recorded in the above table for groups with fewer than 10 placed applicants in that cycle or in the 2018 cycle.

SB.45 Placed 18 year old applicants to nursing from Scotland by sex: 5 days after A level results day

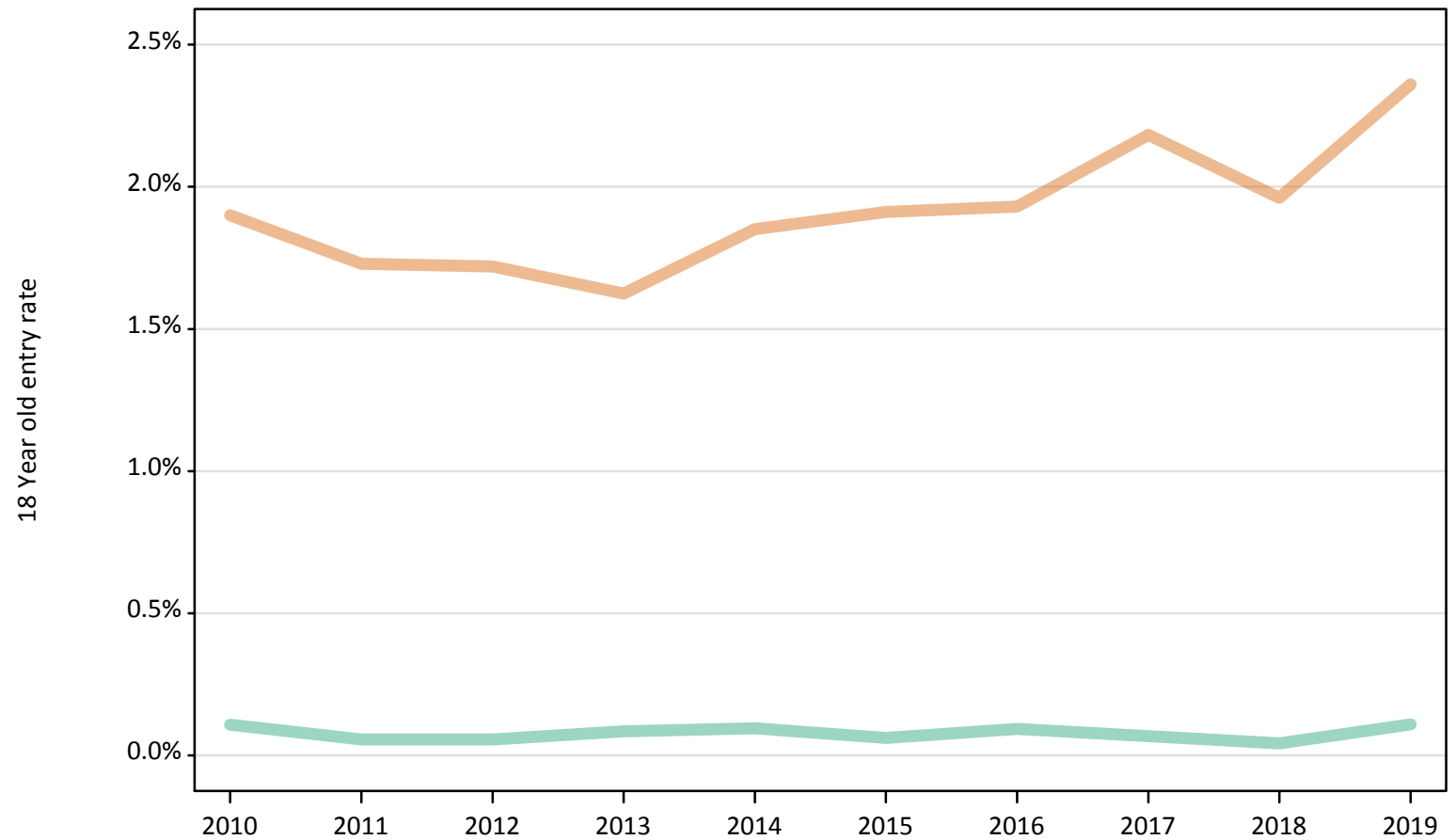
Placed 18 year old applicants to nursing: absolute change relative to 2018 cycle totals

Applicant Status	Sex	2010	2011	2012	2013	2014	2015	2016	2017	2018	2019
Placed	Men	20	10	10	20	20	10	20	10	0	20
	Women	60	-10	-20	-50	20	30	20	70	0	90
	All	90	0	-10	-40	30	30	30	80	0	110

SB.46 Placed 18 year old applicants to nursing from Scotland by sex: 5 days after A level results day

Placed 18 year old applicants to nursing: entry rate

Men
Women



SB.47 Placed 18 year old applicants to nursing from Scotland by sex: 5 days after A level results day

Placed 18 year old applicants to nursing: entry rate

Applicant Status	Sex	2010	2011	2012	2013	2014	2015	2016	2017	2018	2019
Placed	Men	0.1%	0.1%	0.1%	0.1%	0.1%	0.1%	0.1%	0.1%	0.0%	0.1%
	Women	1.9%	1.7%	1.7%	1.6%	1.9%	1.9%	1.9%	2.2%	2.0%	2.4%
	All	1.0%	0.9%	0.9%	0.8%	0.9%	1.0%	1.0%	1.1%	1.0%	1.2%

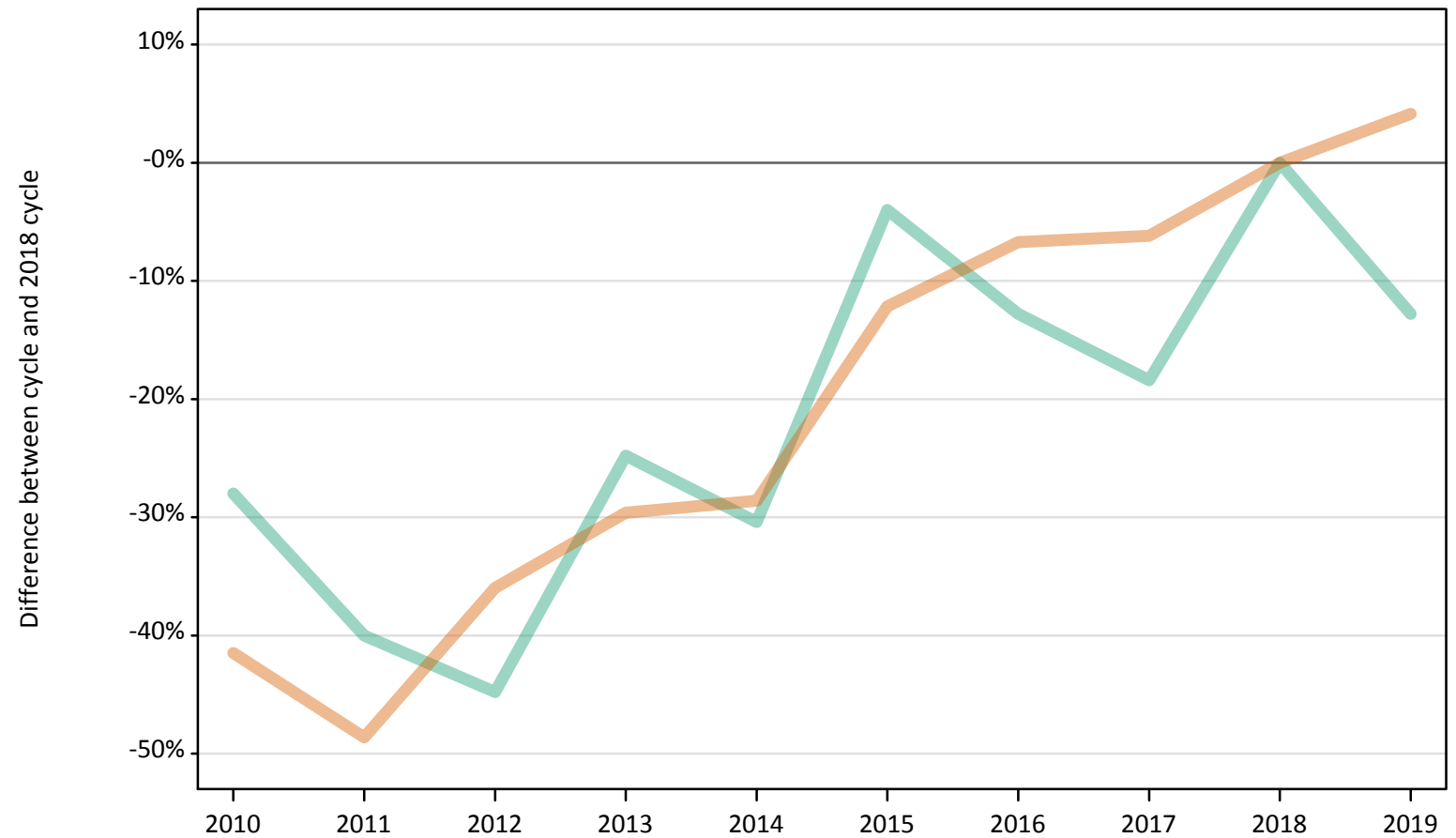
SB.48 Placed 18 year old applicants to nursing from Scotland by sex: 5 days after A level results day

Placed 18 year old applicants to nursing: entry rate (indexed to 100 = Men)

Applicant Status	Sex	2010	2011	2012	2013	2014	2015	2016	2017	2018	2019
Placed	Men	100	100	100	100	100	100	100	100	100	100
	Women	1,758	3,088	3,041	1,915	1,944	3,102	2,082	3,221	4,616	2,160

SB.49 Placed applicants to nursing by sex from Wales by sex: 5 days after A level results day
Placed applicants to nursing by sex: change relative to 2018 cycle totals

Men
Women



Note: The percentage change is not plotted in the above chart for groups with fewer than 30 placed applicants in any one cycle.

SB.50 Placed applicants to nursing by sex from Wales by sex: 5 days after A level results day

Applicant Status	Sex	2010	2011	2012	2013	2014	2015	2016	2017	2018	2019
Placed	Men	90	80	70	90	90	120	110	100	130	110
	Women	790	700	870	960	970	1,190	1,270	1,270	1,360	1,410
	All	880	770	940	1,050	1,060	1,310	1,380	1,380	1,480	1,520

SB.51 Placed applicants to nursing by sex from Wales by sex: 5 days after A level results day

Placed applicants to nursing by sex: change relative to 2018 cycle totals

Applicant Status	Sex	2010	2011	2012	2013	2014	2015	2016	2017	2018	2019
Placed	Men	-28%	-40%	-45%	-25%	-30%	-4%	-13%	-18%	0%	-13%
	Women	-41%	-49%	-36%	-30%	-29%	-12%	-7%	-6%	0%	4%
	All	-40%	-48%	-37%	-29%	-29%	-11%	-7%	-7%	0%	3%

Note: The percentage change is not recorded in the above table for groups with fewer than 10 placed applicants in that cycle or in the 2018 cycle.

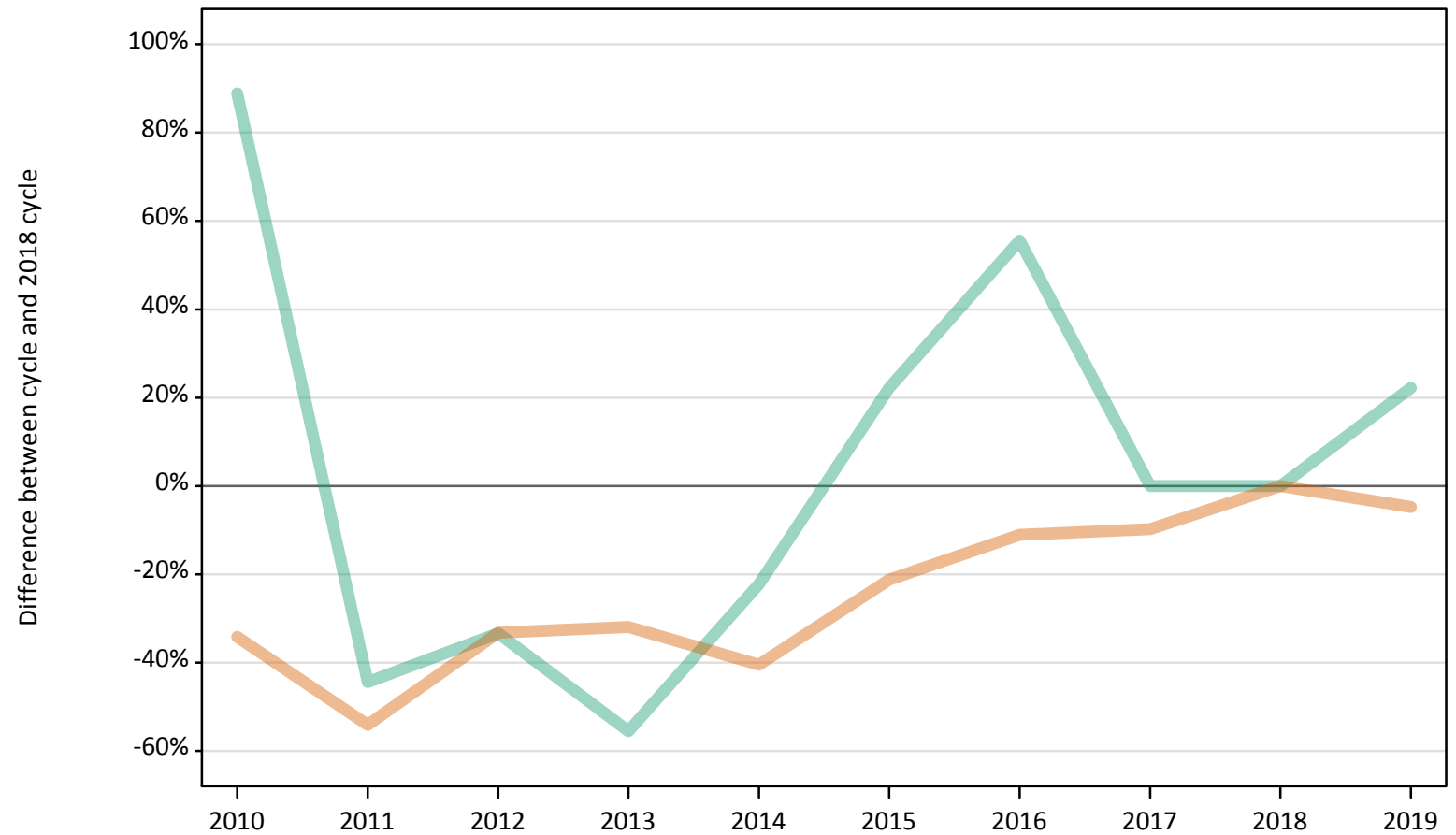
SB.52 Placed applicants to nursing by sex from Wales by sex: 5 days after A level results day

Placed applicants to nursing by sex: absolute change relative to 2018 cycle totals

Applicant Status	Sex	2010	2011	2012	2013	2014	2015	2016	2017	2018	2019
Placed	Men	-40	-50	-60	-30	-40	-10	-20	-20	0	-20
	Women	-560	-660	-490	-400	-390	-170	-90	-80	0	60
	All	-600	-710	-540	-430	-430	-170	-110	-110	0	40

SB.53 Placed 18 year old applicants to nursing from Wales by sex: 5 days after A level results day
Placed 18 year old applicants to nursing: change relative to 2018 cycle totals

Men
Women



Note: The percentage change is not plotted in the above chart for groups with fewer than 30 placed applicants in any one cycle.

SB.54 Placed 18 year old applicants to nursing from Wales by sex: 5 days after A level results day

Applicant Status	Sex	2010	2011	2012	2013	2014	2015	2016	2017	2018	2019
Placed	Men	20	10	10	0	10	10	10	10	10	10
	Women	210	150	210	220	190	250	280	290	320	300
	All	230	150	220	220	200	260	300	290	330	310

SB.55 Placed 18 year old applicants to nursing from Wales by sex: 5 days after A level results day

Placed 18 year old applicants to nursing: change relative to 2018 cycle totals

Applicant Status	Sex	2010	2011	2012	2013	2014	2015	2016	2017	2018	2019
Placed	Men										
	Women	-34%	-54%	-33%	-32%	-41%	-21%	-11%	-10%	0%	-5%
	All	-31%	-54%	-33%	-33%	-40%	-20%	-9%	-10%	0%	-4%

Note: The percentage change is not recorded in the above table for groups with fewer than 10 placed applicants in that cycle or in the 2018 cycle.

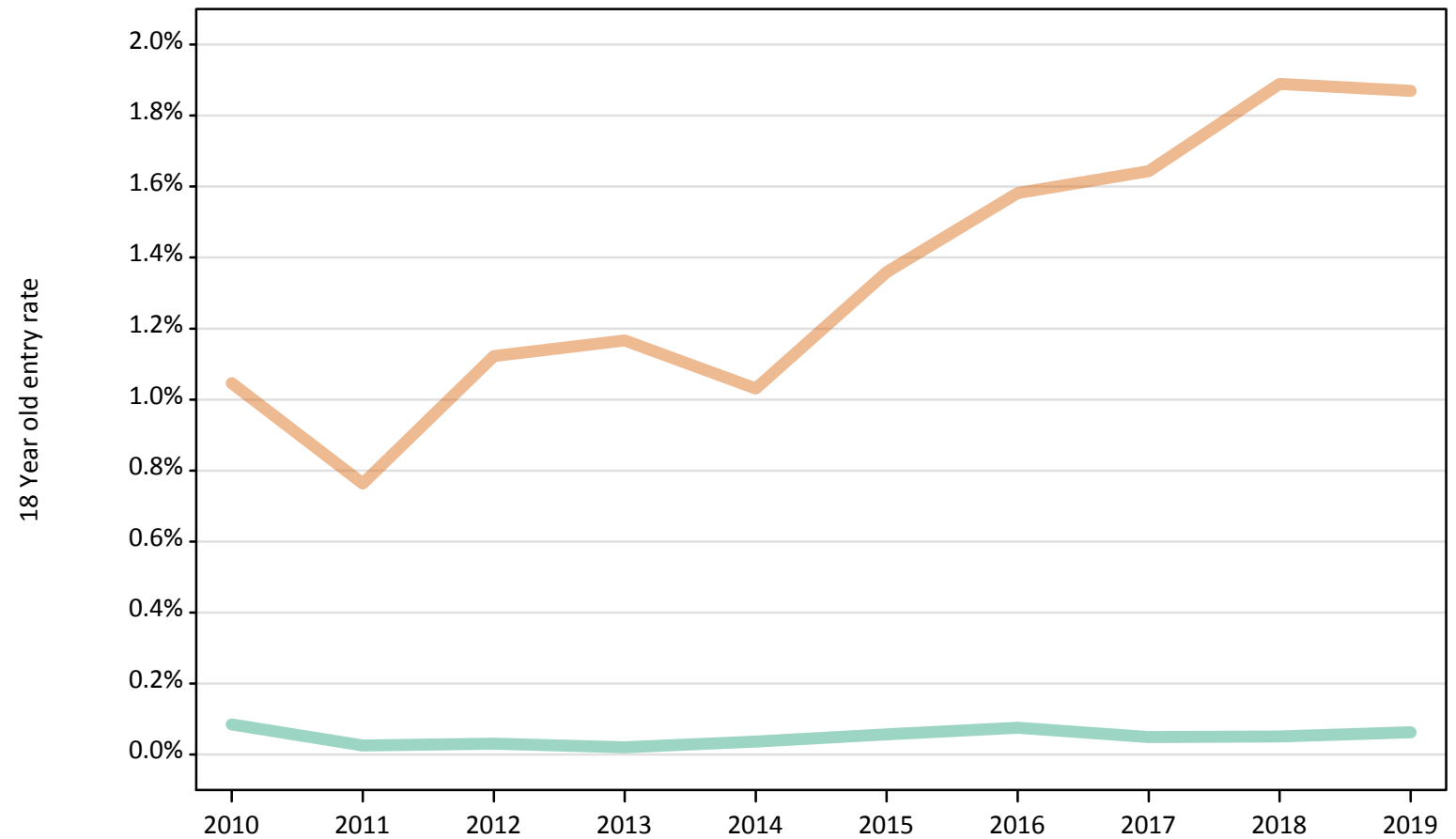
SB.56 Placed 18 year old applicants to nursing from Wales by sex: 5 days after A level results day

Placed 18 year old applicants to nursing: absolute change relative to 2018 cycle totals

Applicant Status	Sex	2010	2011	2012	2013	2014	2015	2016	2017	2018	2019
Placed	Men	10	0	0	-10	0	0	10	0	0	0
	Women	-110	-170	-110	-100	-130	-70	-40	-30	0	-20
	All	-100	-180	-110	-110	-130	-70	-30	-30	0	-10

SB.57 Placed 18 year old applicants to nursing from Wales by sex: 5 days after A level results day
Placed 18 year old applicants to nursing: entry rate

Men
Women



SB.58 Placed 18 year old applicants to nursing from Wales by sex: 5 days after A level results day

Placed 18 year old applicants to nursing: entry rate

Applicant Status	Sex	2010	2011	2012	2013	2014	2015	2016	2017	2018	2019
Placed	Men	0.1%	0.0%	0.0%	0.0%	0.0%	0.1%	0.1%	0.0%	0.1%	0.1%
	Women	1.0%	0.8%	1.1%	1.2%	1.0%	1.4%	1.6%	1.6%	1.9%	1.9%
	All	0.6%	0.4%	0.6%	0.6%	0.5%	0.7%	0.8%	0.8%	0.9%	0.9%

SB.59 Placed 18 year old applicants to nursing from Wales by sex: 5 days after A level results day

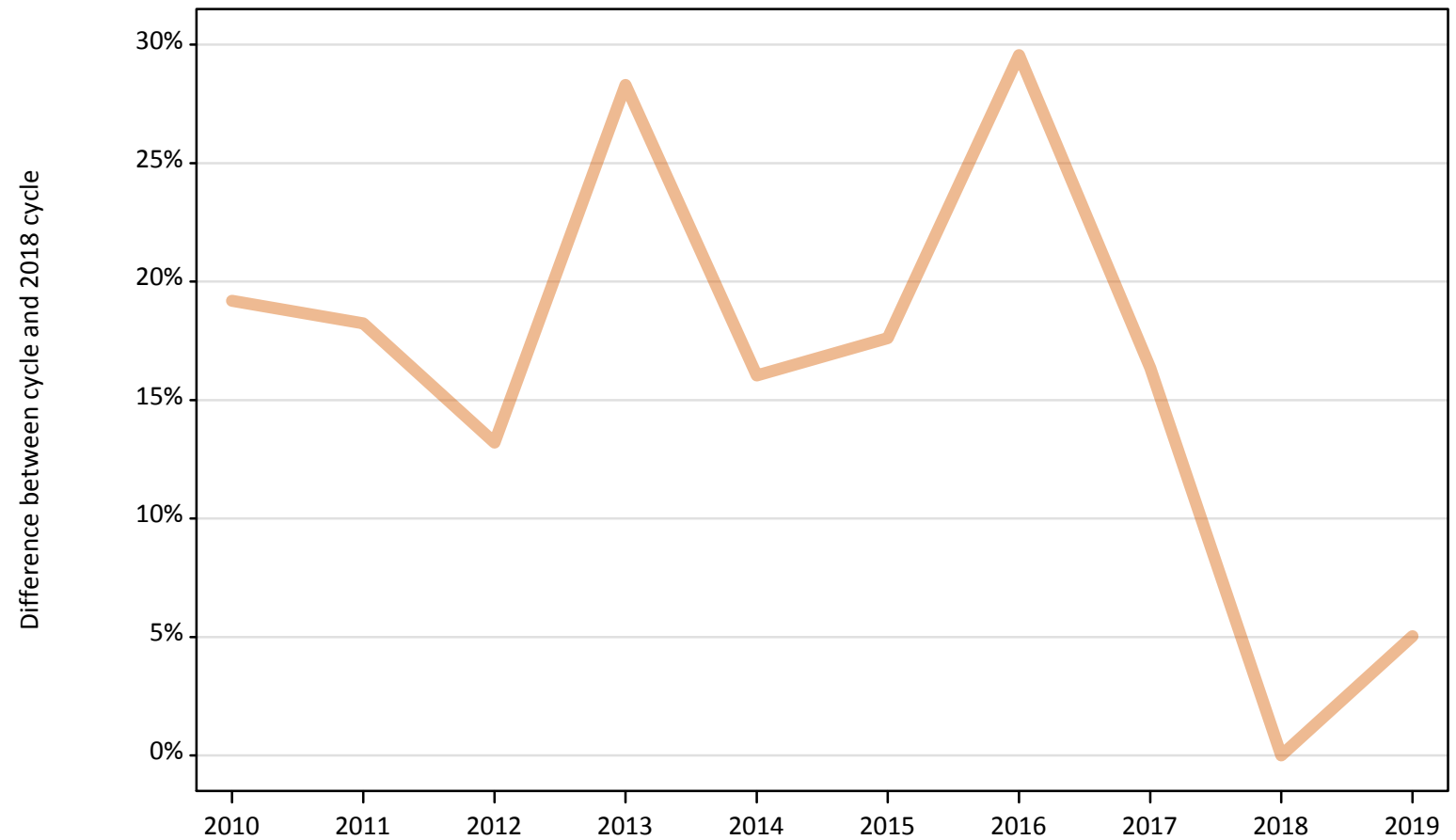
Placed 18 year old applicants to nursing: entry rate (indexed to 100 = Men)

Applicant Status	Sex	2010	2011	2012	2013	2014	2015	2016	2017	2018	2019
Placed	Men	100	100	100	100	100	100	100	100	100	100
	Women	1,229	2,992	3,695	5,649	2,837	2,393	2,095	3,321	3,709	2,974

SB.60 Placed applicants to nursing by sex from the EU (excluding the UK) by sex: 5 days after A level results day

Placed applicants to nursing by sex: change relative to 2018 cycle totals

Men
Women



Note: The percentage change is not plotted in the above chart for groups with fewer than 30 placed applicants in any one cycle.

SB.61 Placed applicants to nursing by sex from the EU (excluding the UK) by sex: 5 days after A level results day

Applicant Status	Sex	2010	2011	2012	2013	2014	2015	2016	2017	2018	2019
Placed	Men	40	50	20	50	40	40	50	30	40	30
	Women	380	380	360	410	370	370	410	370	320	330
	All	420	430	380	450	410	410	460	400	360	360

SB.62 Placed applicants to nursing by sex from the EU (excluding the UK) by sex: 5 days after A level results day

Placed applicants to nursing by sex: change relative to 2018 cycle totals

Applicant Status	Sex	2010	2011	2012	2013	2014	2015	2016	2017	2018	2019
Placed	Men	16%	35%	-41%	22%	0%	-5%	30%	-14%	0%	-27%
	Women	19%	18%	13%	28%	16%	18%	30%	16%	0%	5%
	All	19%	20%	8%	28%	14%	15%	30%	13%	0%	2%

Note: The percentage change is not recorded in the above table for groups with fewer than 10 placed applicants in that cycle or in the 2018 cycle.

SB.63 Placed applicants to nursing by sex from the EU (excluding the UK) by sex: 5 days after A level results day

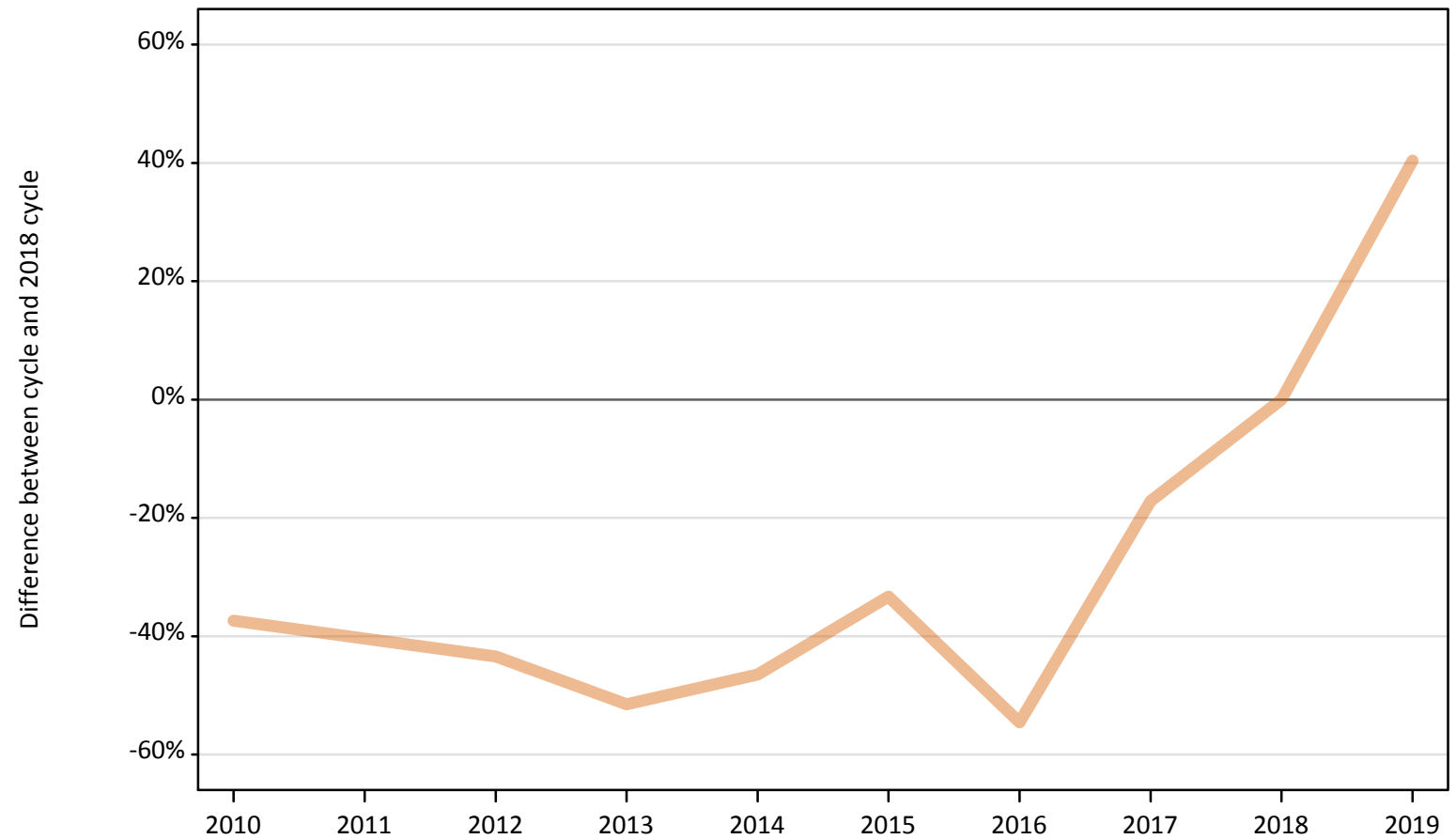
Placed applicants to nursing by sex: absolute change relative to 2018 cycle totals

Applicant Status	Sex	2010	2011	2012	2013	2014	2015	2016	2017	2018	2019
Placed	Men	10	10	-20	10	0	0	10	-10	0	-10
	Women	60	60	40	90	50	60	90	50	0	20
	All	70	70	30	100	50	50	110	50	0	10

SB.64 Placed applicants to nursing by sex from overseas (not EU) by sex: 5 days after A level results day

Placed applicants to nursing by sex: change relative to 2018 cycle totals

Men
Women



Note: The percentage change is not plotted in the above chart for groups with fewer than 30 placed applicants in any one cycle.

SB.65 Placed applicants to nursing by sex from overseas (not EU) by sex: 5 days after A level results day

Applicant Status	Sex	2010	2011	2012	2013	2014	2015	2016	2017	2018	2019
Placed	Men	10	10	10	0	0	10	10	10	10	30
	Women	60	60	60	50	50	70	50	80	100	140
	All	70	70	60	50	60	70	50	90	110	170

SB.66 Placed applicants to nursing by sex from overseas (not EU) by sex: 5 days after A level results day

Placed applicants to nursing by sex: change relative to 2018 cycle totals

Applicant Status	Sex	2010	2011	2012	2013	2014	2015	2016	2017	2018	2019
Placed	Men										
	Women	-37%	-40%	-43%	-52%	-46%	-33%	-55%	-17%	0%	40%
	All	-32%	-38%	-44%	-55%	-47%	-32%	-52%	-16%	0%	53%

Note: The percentage change is not recorded in the above table for groups with fewer than 10 placed applicants in that cycle or in the 2018 cycle.

SB.67 Placed applicants to nursing by sex from overseas (not EU) by sex: 5 days after A level results day

Placed applicants to nursing by sex: absolute change relative to 2018 cycle totals

Applicant Status	Sex	2010	2011	2012	2013	2014	2015	2016	2017	2018	2019
Placed	Men	0	0	0	-10	-10	0	0	0	0	20
	Women	-40	-40	-40	-50	-50	-30	-50	-20	0	40
	All	-40	-40	-50	-60	-50	-40	-60	-20	0	60