

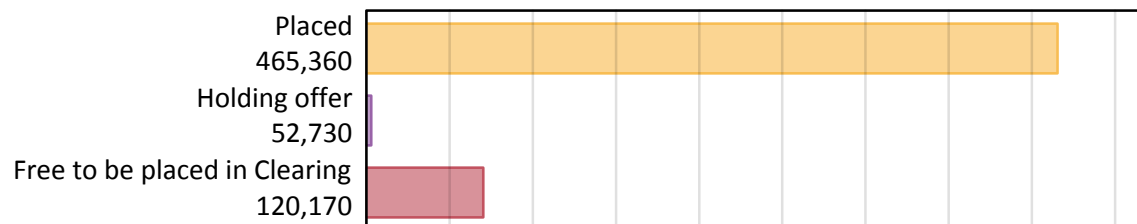
Daily Clearing Analysis: Overview

Analysis at 00:05 on Wednesday 21 August 2019 (6 days after A level results day)

A.1 Applicants by type and status from all domiciles, 2019 cycle

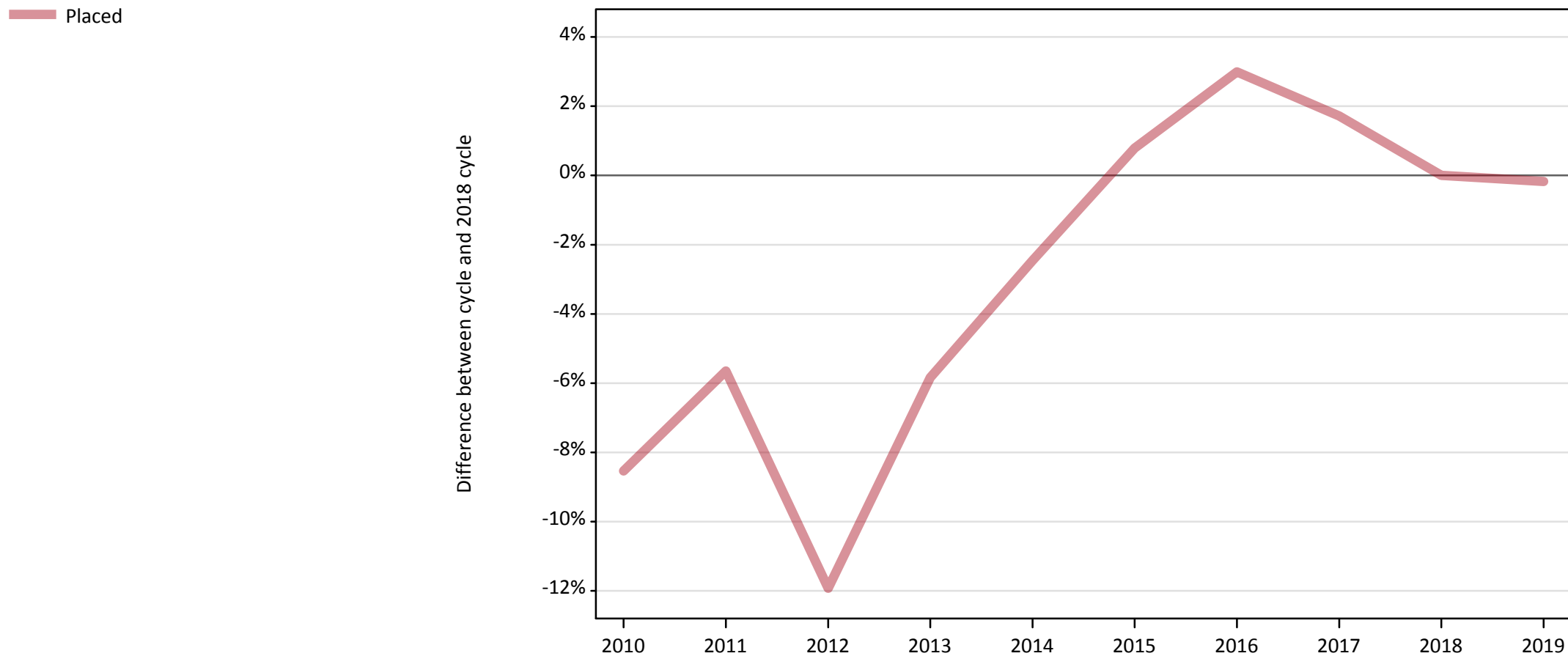
Applicant type	Status	2019
Main scheme	Placed (Clearing)	39,440
	Placed (Adjustment)	600
	Placed (Firm)	370,710
	Placed (Insurance)	33,140
	Placed (Other)	13,140
	Holding offer	52,730
	Free to be placed in Clearing	120,170
Direct to Clearing	Placed (Direct to Clearing)	8,320
	Other (Direct to Clearing)	8,950
All applicants	Placed	465,360

A.2 Summary of applicants who are placed, holding offers or free to be placed in Clearing (all domiciles)



A.3 All placed applicants from all domiciles: 6 days after A level results day

All placed applicants: difference between cycle and 2018 cycle



Note: The percentage change is not plotted in the above chart for groups with fewer than 30 placed applicants in any one cycle.

A.4 All placed applicants from all domiciles: 6 days after A level results day

All placed applicants: applicants at 6 days after A level results day

Applicant type	Status	2010	2011	2012	2013	2014	2015	2016	2017	2018	2019
All applicants	Placed	426,370	439,830	410,560	438,940	454,720	469,850	480,120	474,180	466,160	465,360

A.5 All placed applicants from all domiciles: 6 days after A level results day

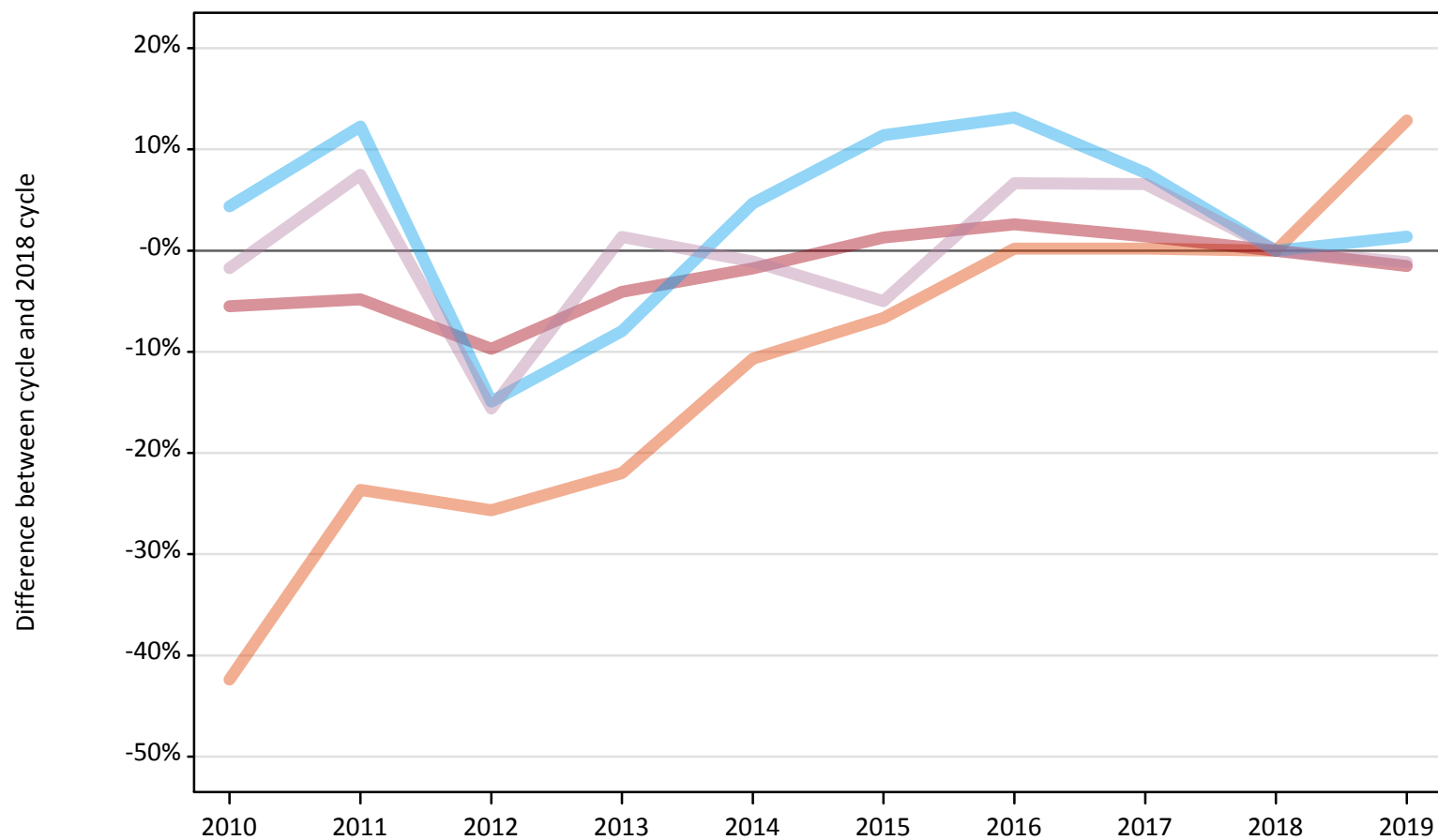
All placed applicants: difference between cycle and 2018 cycle

Applicant type	Status	2010	2011	2012	2013	2014	2015	2016	2017	2018	2019
All applicants	Placed	-9%	-6%	-12%	-6%	-2%	1%	3%	2%	0%	-0%

Note: The percentage change is not recorded in the above table for groups with fewer than 10 placed applicants in that cycle or in the 2018 cycle.

A.6 Placed main scheme applicants from all domiciles: 6 days after A level results day
All Main scheme placed routes (excluding Adjustment): difference between cycle and 2018 cycle

- Placed (Clearing)
- Placed (Firm)
- Placed (Insurance)
- Placed (Other)



Note: The percentage change is not plotted in the above chart for groups with fewer than 30 placed applicants in any one cycle.

A.7 Placed main scheme applicants from all domiciles: 6 days after A level results day

All Main scheme placed routes (excluding Adjustment): applicants at 6 days after A level results day

Applicant type	Status	2010	2011	2012	2013	2014	2015	2016	2017	2018	2019
Main scheme	Placed (Clearing)	20,140	26,680	25,980	27,270	31,210	32,630	35,020	35,020	34,950	39,440
	Placed (Firm)	355,770	358,310	339,880	361,160	369,800	381,380	386,210	381,730	376,440	370,710
	Placed (Insurance)	34,120	36,700	27,810	30,080	34,220	36,410	36,990	35,210	32,690	33,140
	Placed (Other)	13,050	14,280	11,210	13,470	13,140	12,620	14,170	14,160	13,290	13,140

A.8 Placed main scheme applicants from all domiciles: 6 days after A level results day

All Main scheme placed routes (excluding Adjustment): difference between cycle and 2018 cycle

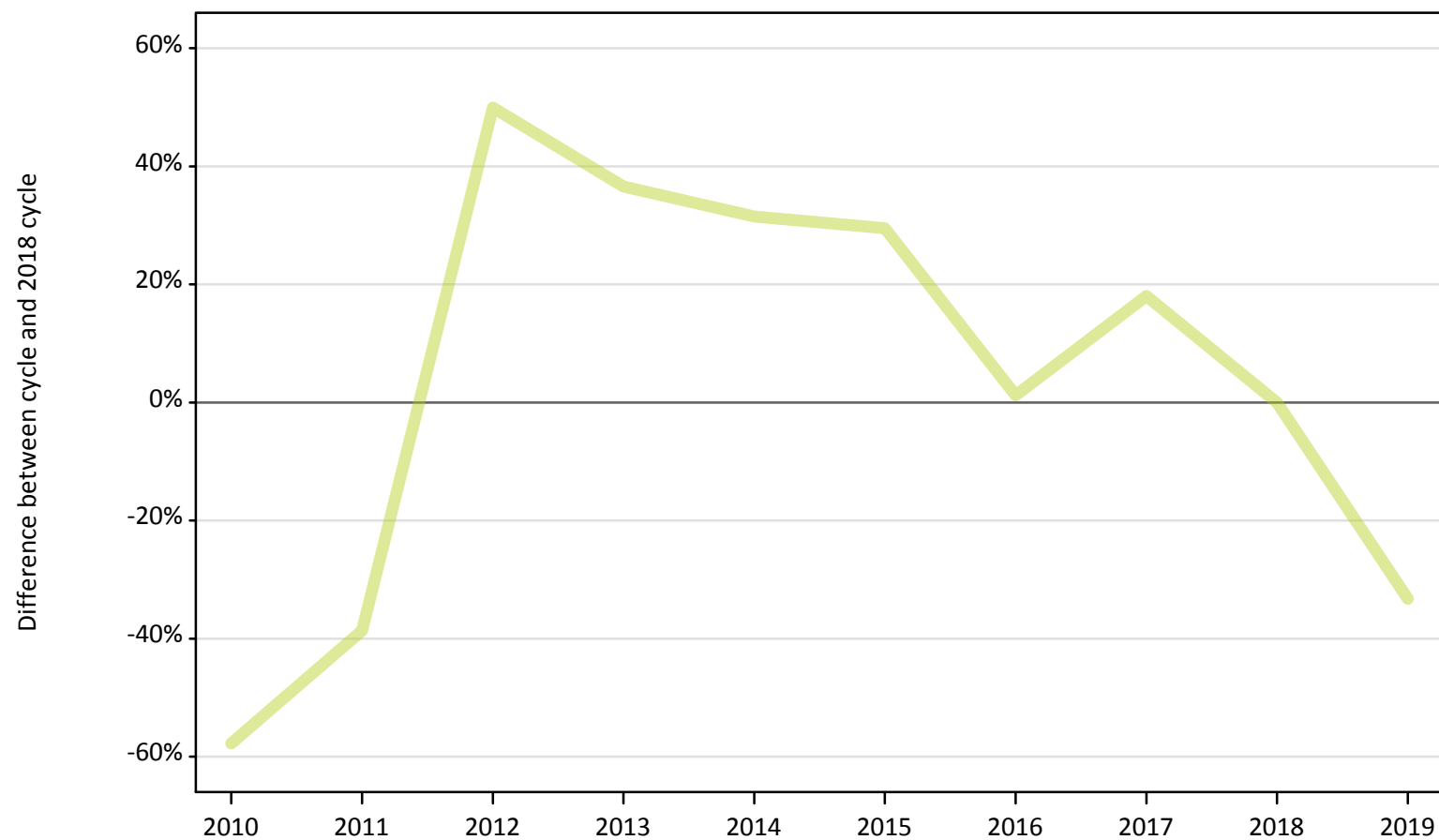
Applicant type	Status	2010	2011	2012	2013	2014	2015	2016	2017	2018	2019
Main scheme	Placed (Clearing)	-42%	-24%	-26%	-22%	-11%	-7%	0%	0%	0%	13%
	Placed (Firm)	-5%	-5%	-10%	-4%	-2%	1%	3%	1%	0%	-2%
	Placed (Insurance)	4%	12%	-15%	-8%	5%	11%	13%	8%	0%	1%
	Placed (Other)	-2%	7%	-16%	1%	-1%	-5%	7%	7%	0%	-1%

Note: The percentage change is not recorded in the above table for groups with fewer than 10 placed applicants in that cycle or in the 2018 cycle.

A.9 Main scheme applicants placed through adjustment: 6 days after A level results day

Placed through adjustment: difference between cycle and 2018 cycle

Placed (Adjustment)



Note: The percentage change is not plotted in the above chart for groups with fewer than 30 placed applicants in any one cycle.

A.10 Main scheme applicants placed through adjustment: 6 days after A level results day

Placed through adjustment: applicants at 6 days after A level results day

Applicant type	Status	2010	2011	2012	2013	2014	2015	2016	2017	2018	2019
Main scheme	Placed (Adjustment)	380	560	1,360	1,240	1,190	1,170	920	1,070	910	600

A.11 Main scheme applicants placed through adjustment: 6 days after A level results day

Placed through adjustment: difference between cycle and 2018 cycle

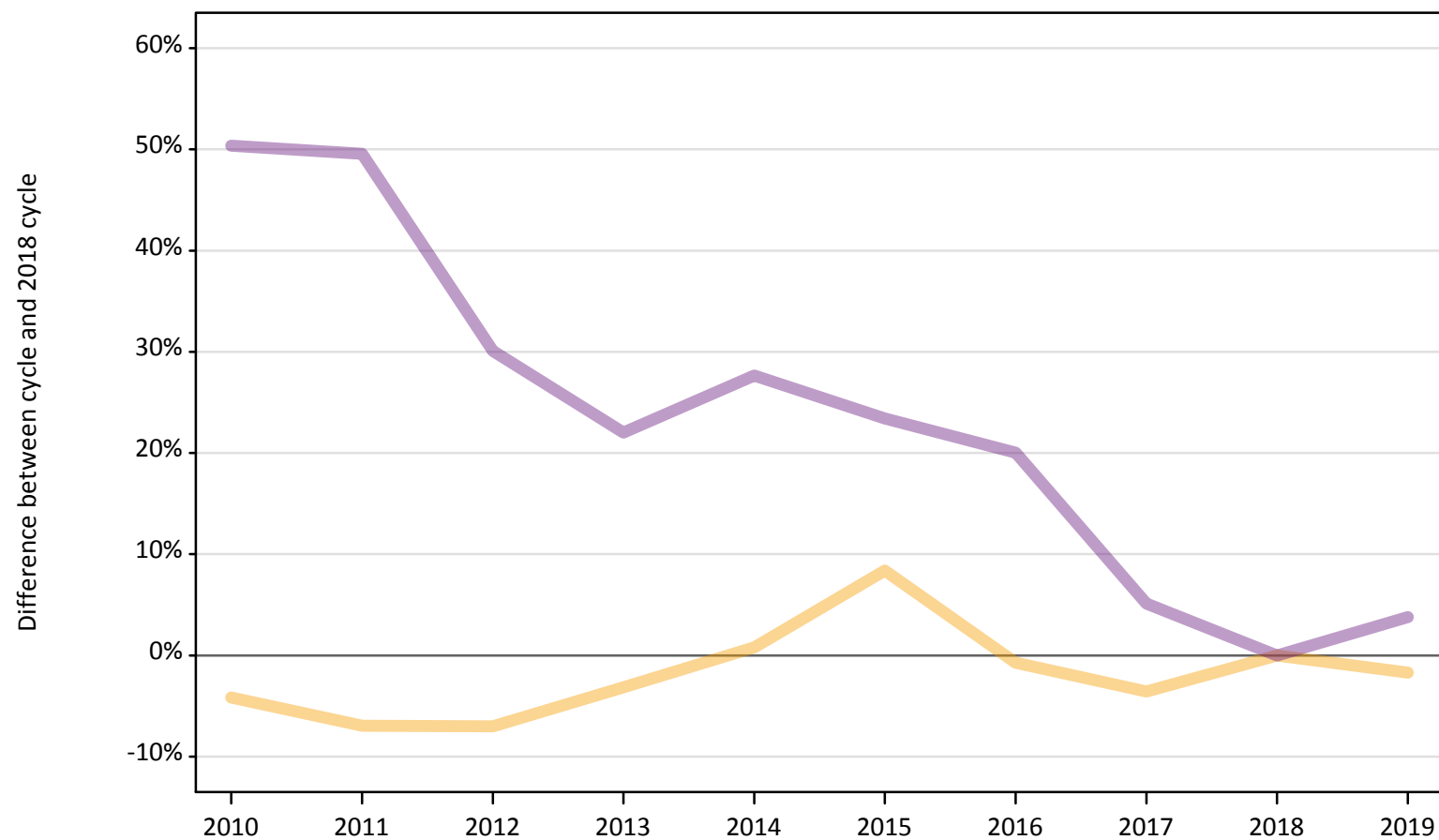
Applicant type	Status	2010	2011	2012	2013	2014	2015	2016	2017	2018	2019
Main scheme	Placed (Adjustment)	-58%	-39%	50%	37%	31%	30%	1%	18%	0%	-33%

Note: The percentage change is not recorded in the above table for groups with fewer than 10 placed applicants in that cycle or in the 2018 cycle.

A.12 Main scheme applicants not currently placed from all domiciles: 6 days after A level results day

Applicants in unplaced states: difference between cycle and 2018 cycle

— Holding offer
— Free to be placed in Clearing



Note: The percentage change is not plotted in the above chart for groups with fewer than 30 unplaced applicants in any one cycle.

A.13 Main scheme applicants not currently placed from all domiciles: 6 days after A level results day

Applicants in unplaced states: applicants at 6 days after A level results day

Applicant type	Status	2010	2011	2012	2013	2014	2015	2016	2017	2018	2019
Main scheme	Holding offer	51,410	49,910	49,890	51,950	54,070	58,140	53,250	51,730	53,640	52,730
	Free to be placed in Clearing	174,110	173,170	150,630	141,280	147,810	142,890	138,990	121,700	115,790	120,170

A.14 Main scheme applicants not currently placed from all domiciles: 6 days after A level results day

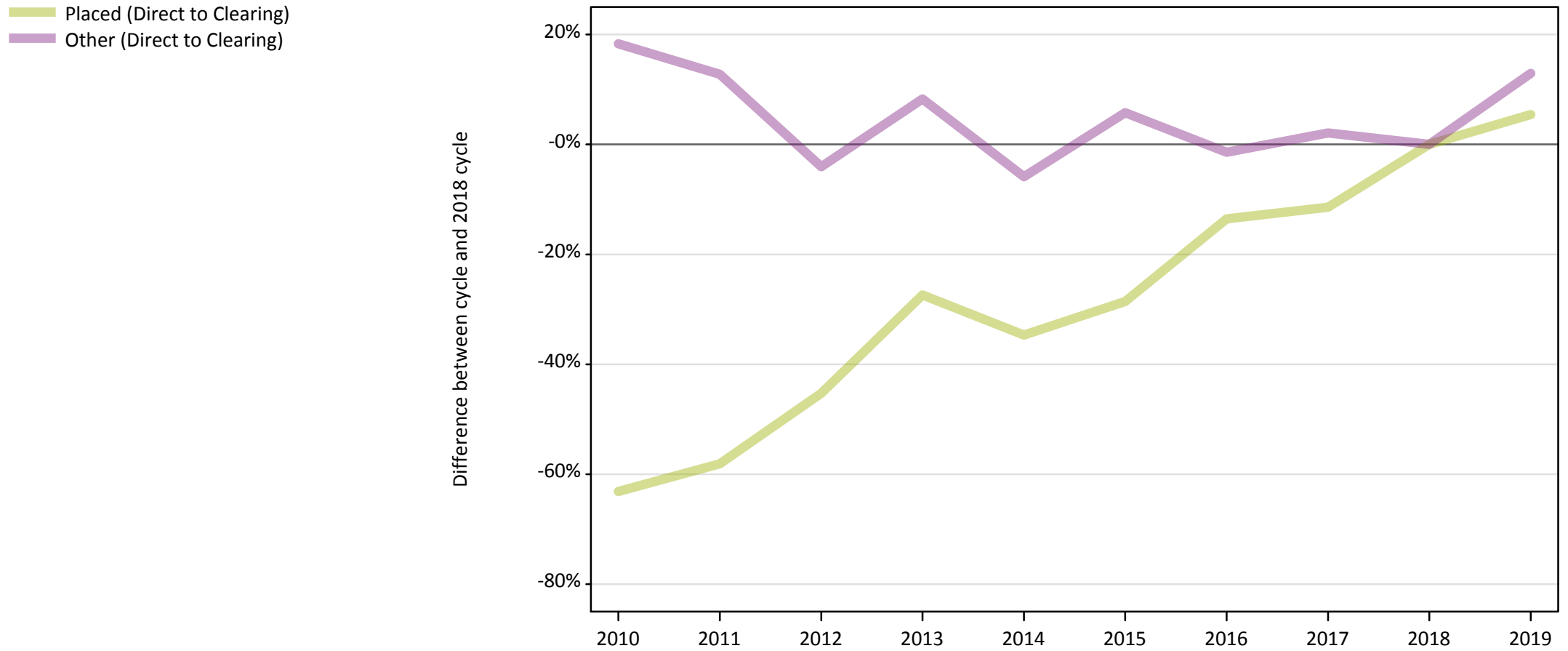
Applicants in unplaced states: difference between cycle and 2018 cycle

Applicant type	Status	2010	2011	2012	2013	2014	2015	2016	2017	2018	2019
Main scheme	Holding offer	-4%	-7%	-7%	-3%	1%	8%	-1%	-4%	0%	-2%
	Free to be placed in Clearing	50%	50%	30%	22%	28%	23%	20%	5%	0%	4%

Note: The percentage change is not recorded in the above table for groups with fewer than 10 unplaced applicants in that cycle or in the 2018 cycle.

A.15 Direct to Clearing applicants from all domiciles: 6 days after A level results day

Direct to Clearing: difference between cycle and 2018 cycle



Note: The percentage change is not plotted in the above chart for groups with fewer than 30 placed applicants in any one cycle.

A.16 Direct to Clearing applicants from all domiciles: 6 days after A level results day

Direct to Clearing 6 days after A level results day

Applicant type	Status	2010	2011	2012	2013	2014	2015	2016	2017	2018	2019
Direct to Clearing	Placed (Direct to Clearing)	2,910	3,310	4,320	5,730	5,160	5,640	6,830	6,990	7,900	8,320
	Other (Direct to Clearing)	9,380	8,940	7,600	8,580	7,460	8,380	7,810	8,090	7,930	8,950

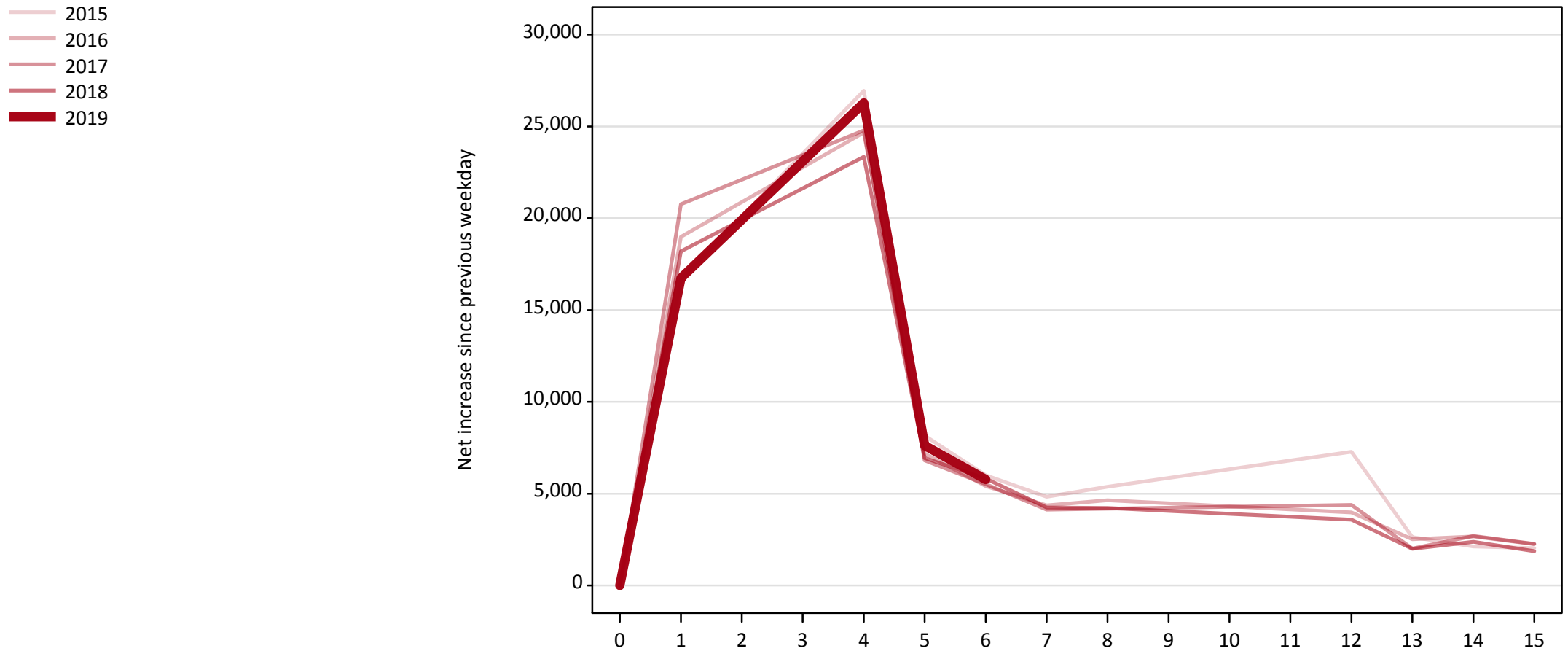
A.17 Direct to Clearing applicants from all domiciles: 6 days after A level results day

Direct to Clearing: difference between cycle and 2018 cycle

Applicant type	Status	2010	2011	2012	2013	2014	2015	2016	2017	2018	2019
Direct to Clearing	Placed (Direct to Clearing)	-63%	-58%	-45%	-27%	-35%	-29%	-14%	-11%	0%	5%
	Other (Direct to Clearing)	18%	13%	-4%	8%	-6%	6%	-1%	2%	0%	13%

Note: The percentage change is not recorded in the above table for groups with fewer than 10 placed applicants in that cycle or in the 2018 cycle.

A.18 All Placed: Daily net change (from all domiciles)
Net increase since previous weekday (2019 cycle up to 6 days after A level results day)

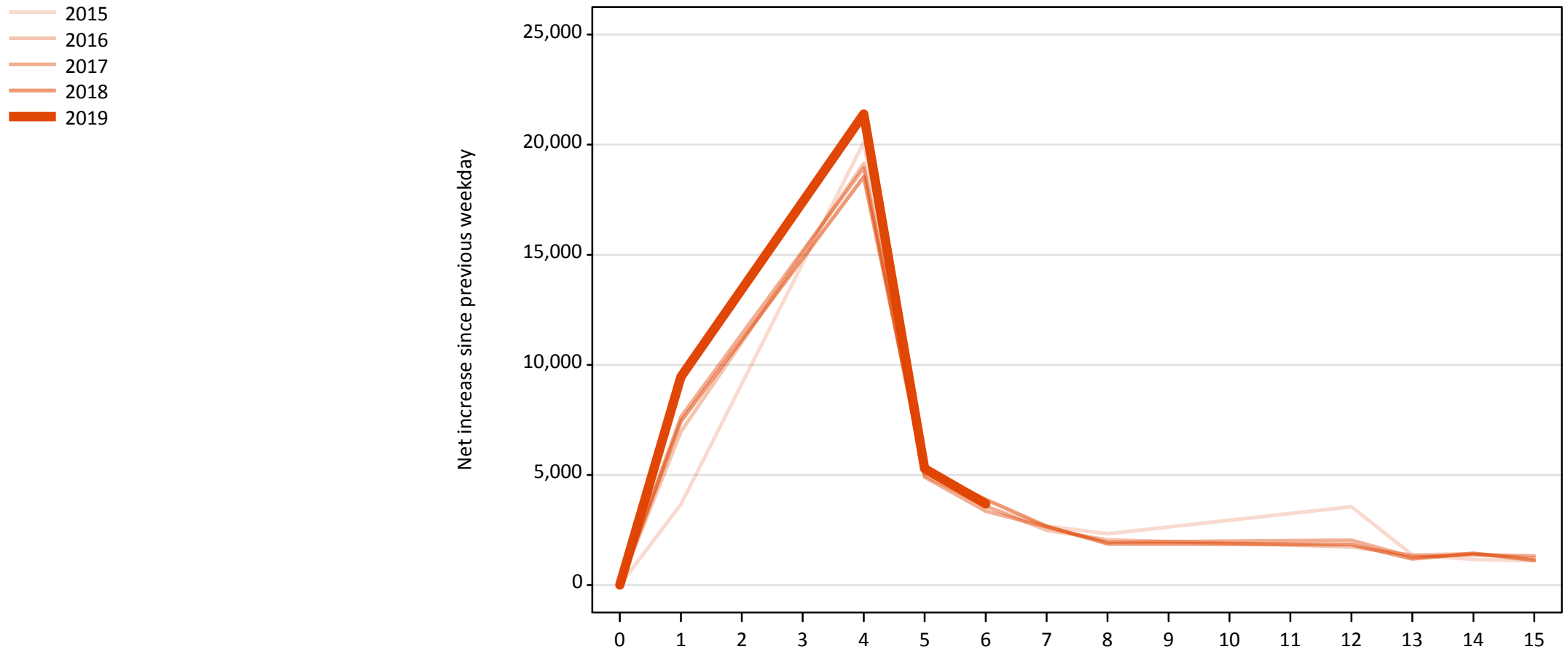


A.19 All Placed: Daily net change (from all domiciles)

Net increase since previous weekday (2019 cycle up to 6 days after A level results day)

Applicant status, days since A level results day		2015	2016	2017	2018	2019
All Placed	0	0	0	0	0	0
	1	16,680	18,990	20,770	18,200	16,740
	4	26,940	24,670	24,790	23,340	26,280
	5	8,160	7,170	6,810	6,940	7,620
	6	6,000	5,410	5,510	5,820	5,770
	7	4,830	4,350	4,140	4,240	
	8	5,370	4,640	4,190	4,220	
	12	7,280	3,980	4,380	3,590	
	13	2,630	2,510	2,010	2,000	
	14	2,120	2,660	2,700	2,370	
	15	2,030	2,250	2,260	1,870	

A.20 Placed through Clearing only: Daily net change (from all domiciles)
Net increase since previous weekday (2019 cycle up to 6 days after A level results day)



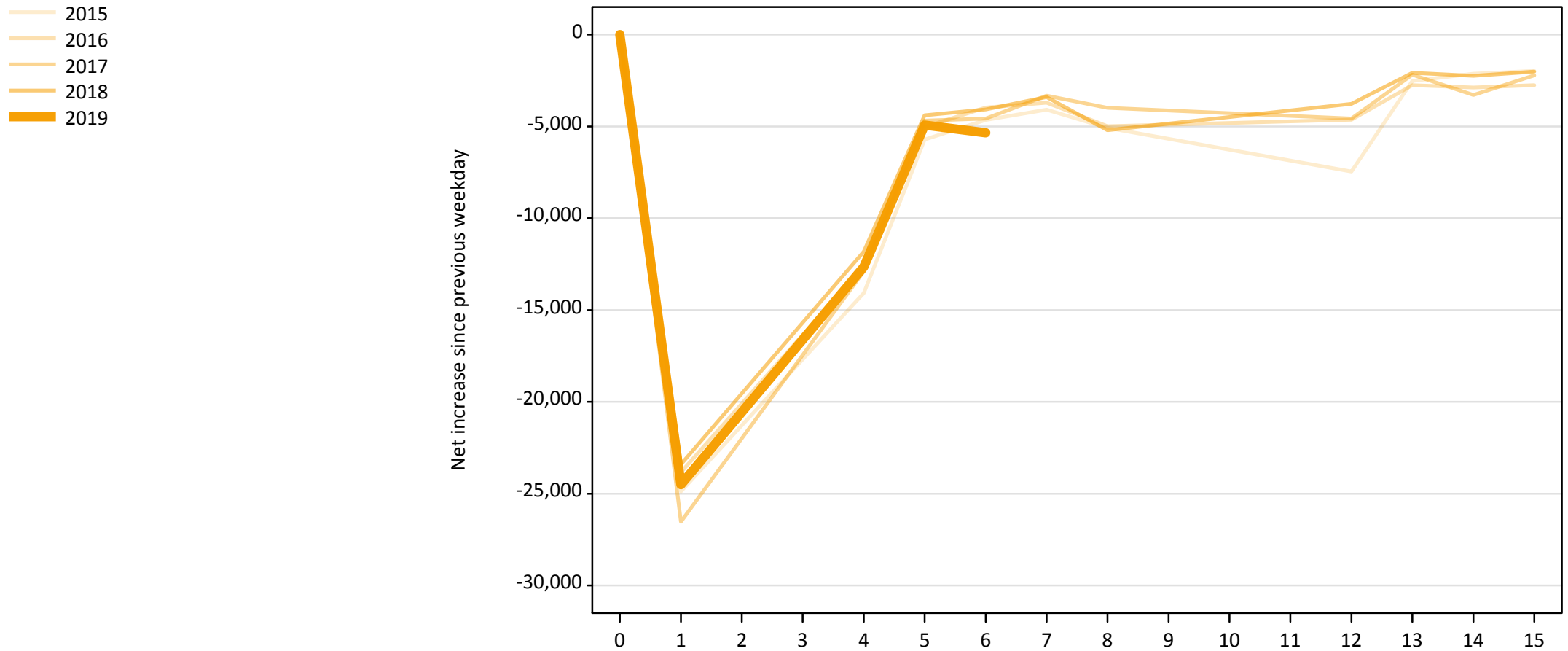
A.21 Placed through Clearing only: Daily net change (from all domiciles)

Net increase since previous weekday (2019 cycle up to 6 days after A level results day)

Applicant status, days since A level results day		2015	2016	2017	2018	2019
Placed through Clearing only	0	0	0	0	0	0
	1	3,660	6,970	7,640	7,440	9,460
	4	20,110	19,140	18,940	18,550	21,390
	5	5,290	4,960	4,910	5,250	5,280
	6	3,560	3,590	3,360	3,890	3,680
	7	2,680	2,480	2,640	2,660	
	8	2,330	2,050	1,950	1,880	
	12	3,550	1,740	2,030	1,840	
	13	1,370	1,350	1,270	1,190	
	14	1,160	1,420	1,370	1,440	
	15	1,100	1,210	1,320	1,130	

A.22 Holding Offer: Daily net change (from all domiciles)

Net increase since previous weekday (2019 cycle up to 6 days after A level results day)

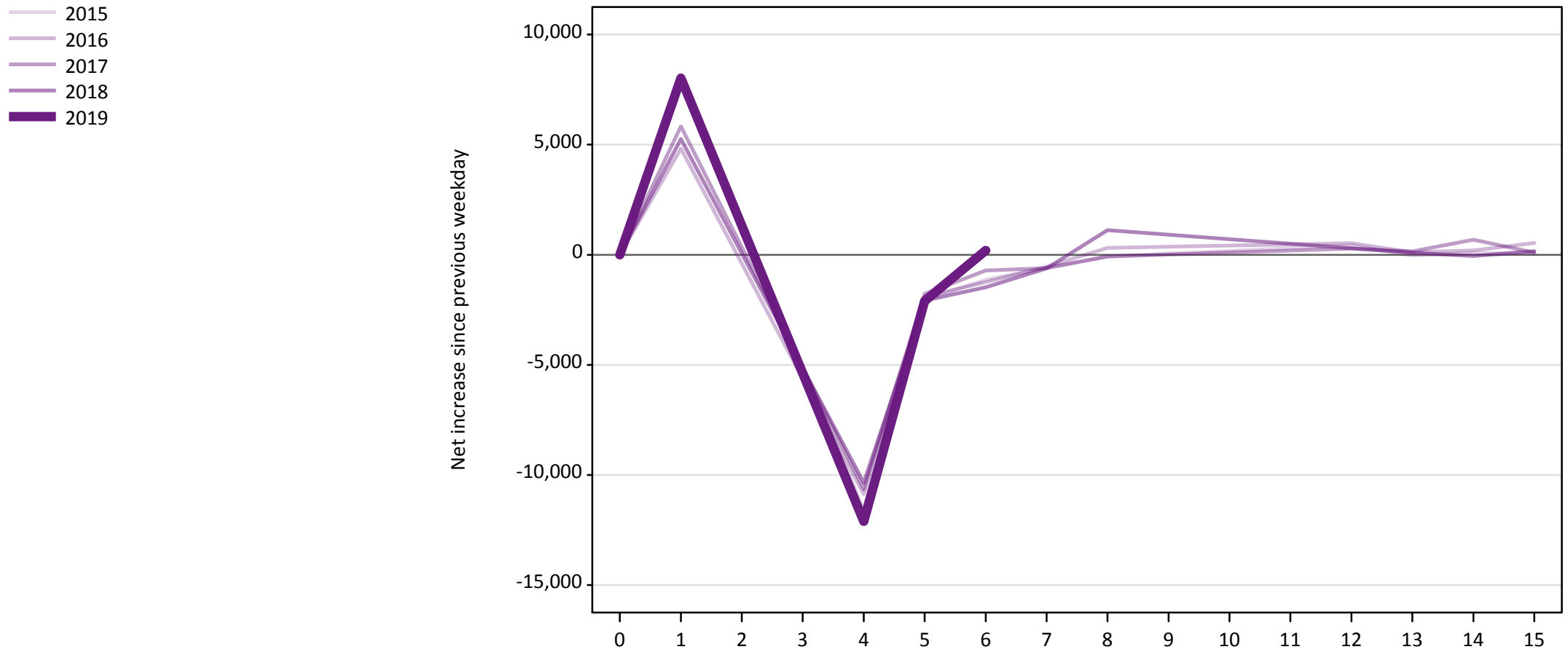


A.23 Holding Offer: Daily net change (from all domiciles)

Net increase since previous weekday (2019 cycle up to 6 days after A level results day)

Applicant status, days since A level results day		2015	2016	2017	2018	2019
Holding Offer	0	0	0	0	0	0
	1	-24,880	-23,840	-26,530	-23,410	-24,510
	4	-14,080	-12,600	-12,900	-11,810	-12,650
	5	-5,720	-5,030	-4,680	-4,390	-4,930
	6	-4,650	-3,970	-4,580	-4,080	-5,340
	7	-4,090	-3,700	-3,330	-3,400	
	8	-5,080	-4,990	-3,990	-5,210	
	12	-7,460	-4,640	-4,580	-3,770	
	13	-2,520	-2,760	-2,180	-2,080	
	14	-2,130	-2,880	-3,280	-2,250	
	15	-1,980	-2,760	-2,230	-2,020	

A.24 Free to be placed in Clearing: Daily net change (from all domiciles)
Net increase since previous weekday (2019 cycle up to 6 days after A level results day)



A.25 Free to be placed in Clearing: Daily net change (from all domiciles)

Net increase since previous weekday (2019 cycle up to 6 days after A level results day)

Applicant status, days since A level results day		2015	2016	2017	2018	2019
Free to be placed in Clearing	0	0	0	0	0	0
	1	8,010	4,820	5,830	5,260	8,020
	4	-11,570	-10,870	-10,650	-10,350	-12,110
	5	-2,040	-1,900	-1,780	-2,080	-2,110
	6	-1,130	-1,250	-710	-1,480	200
	7	-570	-540	-610	-620	
	8	-80	310	-80	1,120	
	12	430	530	280	290	
	13	-40	120	150	90	
	14	80	200	680	-60	
	15	60	530	100	160	