

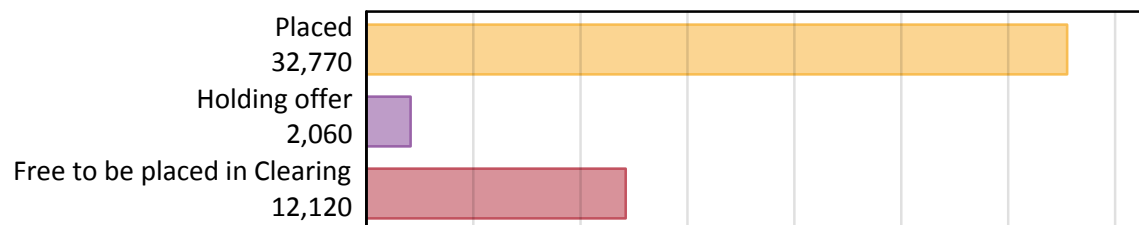
Daily Clearing Analysis: Overview

Analysis at 00:05 on Wednesday 21 August 2019 (6 days after A level results day)

A.1 Applicants by type and status from Scotland, 2019 cycle

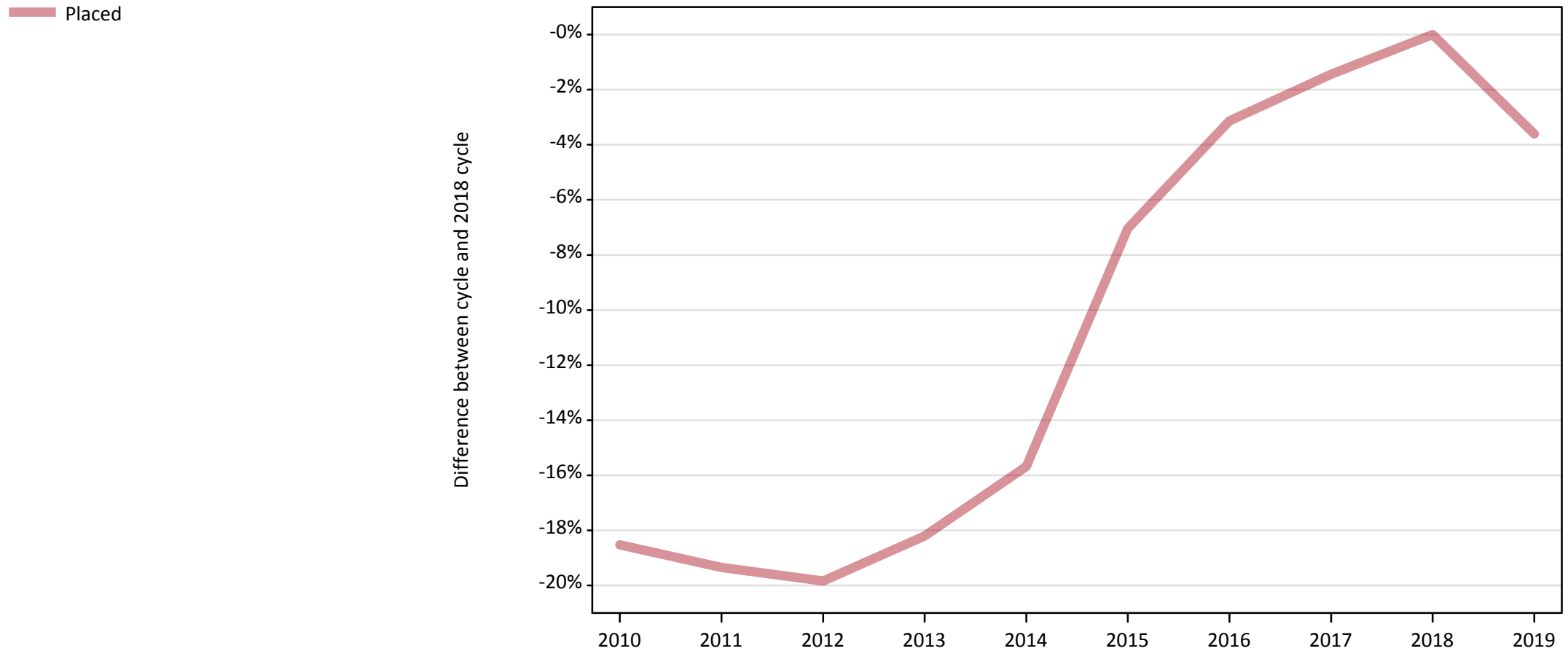
Applicant type	Status	2019
Main scheme	Placed (Clearing)	980
	Placed (Adjustment)	0
	Placed (Firm)	29,680
	Placed (Insurance)	1,250
	Placed (Other)	570
	Holding offer	2,060
	Free to be placed in Clearing	12,120
Direct to Clearing	Placed (Direct to Clearing)	290
	Other (Direct to Clearing)	450
All applicants	Placed	32,770

A.2 Summary of applicants who are placed, holding offers or free to be placed in Clearing (Scotland)



A.3 All placed applicants from Scotland: 6 days after A level results day

All placed applicants: difference between cycle and 2018 cycle



Note: The percentage change is not plotted in the above chart for groups with fewer than 30 placed applicants in any one cycle.

A.4 All placed applicants from Scotland: 6 days after A level results day

All placed applicants: applicants at 6 days after A level results day

Applicant type	Status	2010	2011	2012	2013	2014	2015	2016	2017	2018	2019
All applicants	Placed	27,690	27,410	27,250	27,800	28,660	31,600	32,920	33,500	33,990	32,770

A.5 All placed applicants from Scotland: 6 days after A level results day

All placed applicants: difference between cycle and 2018 cycle

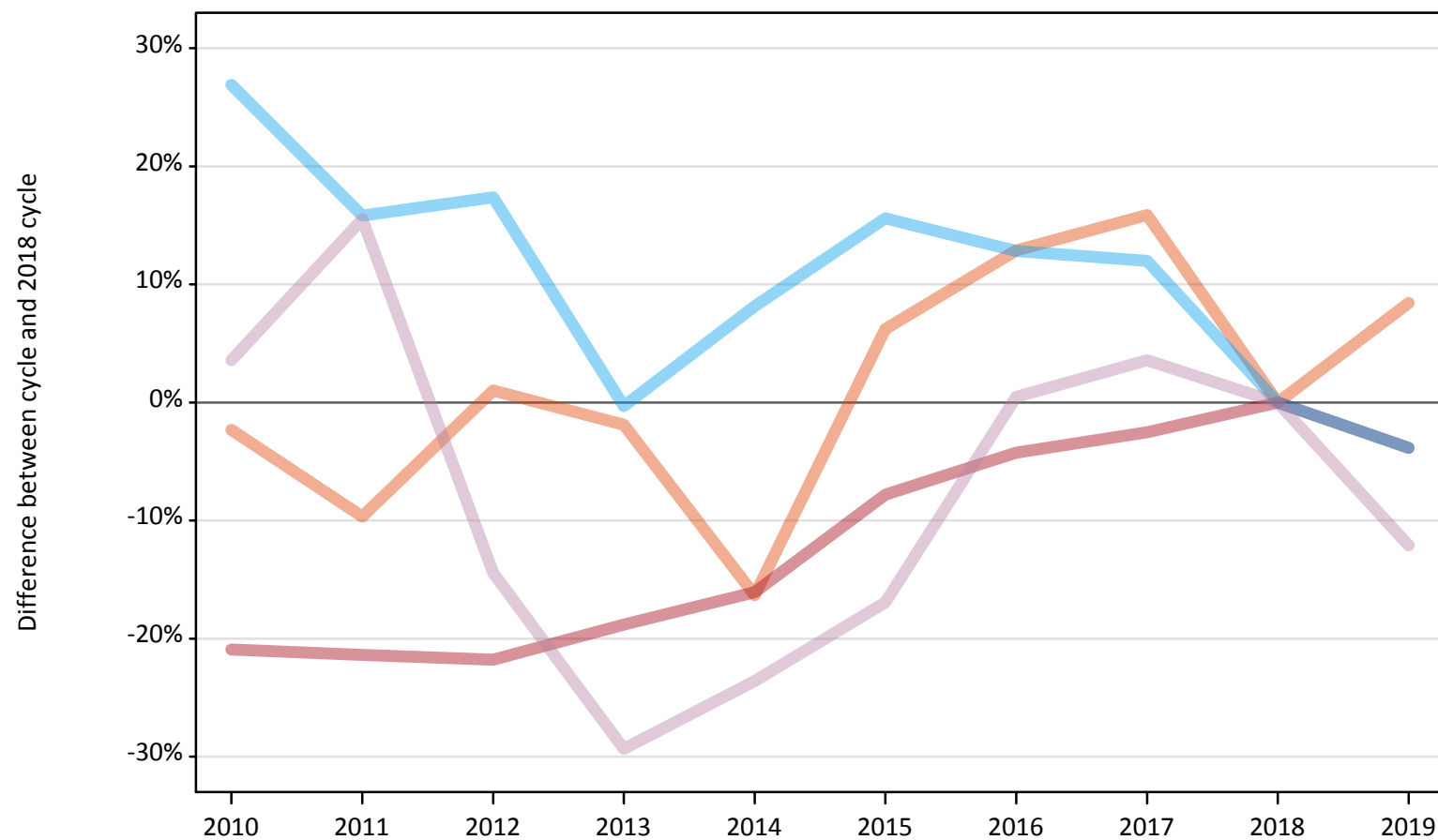
Applicant type	Status	2010	2011	2012	2013	2014	2015	2016	2017	2018	2019
All applicants	Placed	-19%	-19%	-20%	-18%	-16%	-7%	-3%	-1%	0%	-4%

Note: The percentage change is not recorded in the above table for groups with fewer than 10 placed applicants in that cycle or in the 2018 cycle.

A.6 Placed main scheme applicants from Scotland: 6 days after A level results day

All Main scheme placed routes (excluding Adjustment): difference between cycle and 2018 cycle

- Placed (Clearing)
- Placed (Firm)
- Placed (Insurance)
- Placed (Other)



Note: The percentage change is not plotted in the above chart for groups with fewer than 30 placed applicants in any one cycle.

A.7 Placed main scheme applicants from Scotland: 6 days after A level results day

All Main scheme placed routes (excluding Adjustment): applicants at 6 days after A level results day

Applicant type	Status	2010	2011	2012	2013	2014	2015	2016	2017	2018	2019
Main scheme	Placed (Clearing)	880	810	910	880	750	960	1,020	1,040	900	980
	Placed (Firm)	24,400	24,260	24,140	25,060	25,910	28,450	29,550	30,080	30,860	29,680
	Placed (Insurance)	1,650	1,510	1,530	1,300	1,410	1,500	1,470	1,460	1,300	1,250
	Placed (Other)	670	740	550	460	490	540	650	670	640	570

A.8 Placed main scheme applicants from Scotland: 6 days after A level results day

All Main scheme placed routes (excluding Adjustment): difference between cycle and 2018 cycle

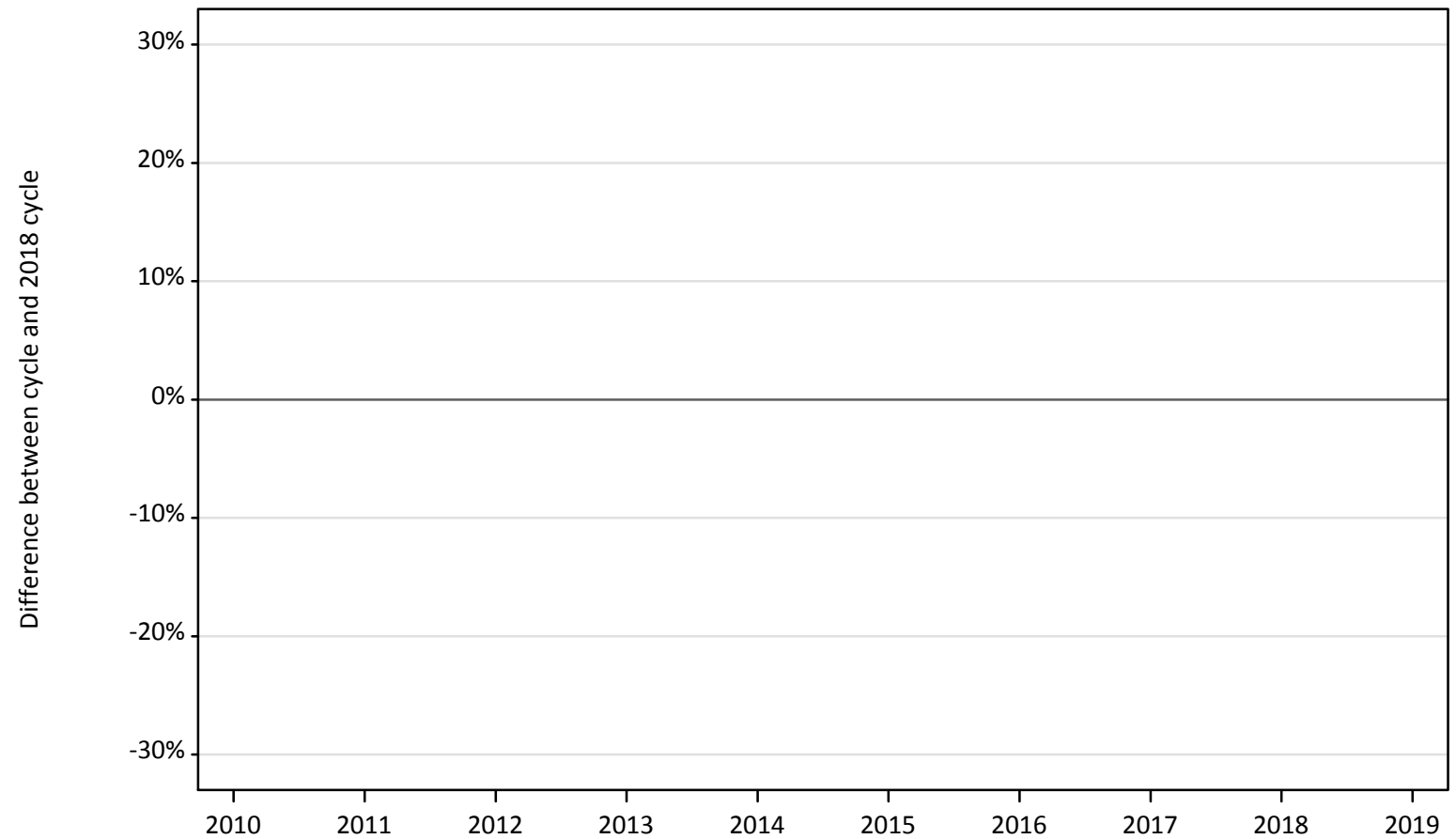
Applicant type	Status	2010	2011	2012	2013	2014	2015	2016	2017	2018	2019
Main scheme	Placed (Clearing)	-2%	-10%	1%	-2%	-16%	6%	13%	16%	0%	8%
	Placed (Firm)	-21%	-21%	-22%	-19%	-16%	-8%	-4%	-3%	0%	-4%
	Placed (Insurance)	27%	16%	17%	-0%	8%	16%	13%	12%	0%	-4%
	Placed (Other)	4%	16%	-14%	-29%	-24%	-17%	0%	4%	0%	-12%

Note: The percentage change is not recorded in the above table for groups with fewer than 10 placed applicants in that cycle or in the 2018 cycle.

A.9 Main scheme applicants placed through adjustment: 6 days after A level results day

Placed through adjustment: difference between cycle and 2018 cycle

Placed (Adjustment)



Note: The percentage change is not plotted in the above chart for groups with fewer than 30 placed applicants in any one cycle.

A.10 Main scheme applicants placed through adjustment: 6 days after A level results day

Placed through adjustment: applicants at 6 days after A level results day

Applicant type	Status	2010	2011	2012	2013	2014	2015	2016	2017	2018	2019
Main scheme	Placed (Adjustment)	0	10	20	10	10	10	10	0	10	0

A.11 Main scheme applicants placed through adjustment: 6 days after A level results day

Placed through adjustment: difference between cycle and 2018 cycle

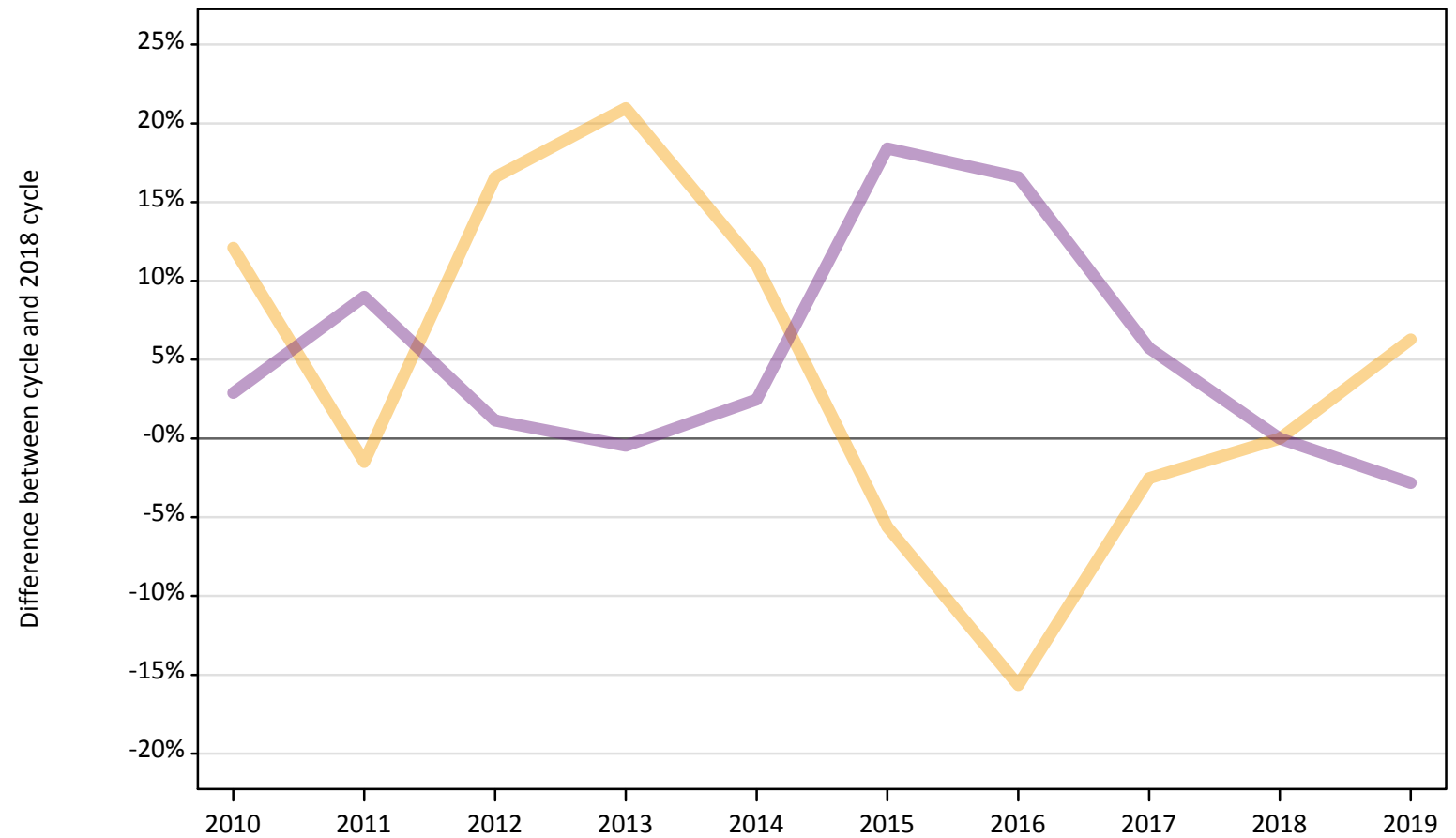
Applicant type	Status	2010	2011	2012	2013	2014	2015	2016	2017	2018	2019
Main scheme	Placed (Adjustment)										

Note: The percentage change is not recorded in the above table for groups with fewer than 10 placed applicants in that cycle or in the 2018 cycle.

A.12 Main scheme applicants not currently placed from Scotland: 6 days after A level results day

Applicants in unplaced states: difference between cycle and 2018 cycle

— Holding offer
— Free to be placed in Clearing



Note: The percentage change is not plotted in the above chart for groups with fewer than 30 unplaced applicants in any one cycle.

A.13 Main scheme applicants not currently placed from Scotland: 6 days after A level results day

Applicants in unplaced states: applicants at 6 days after A level results day

Applicant type	Status	2010	2011	2012	2013	2014	2015	2016	2017	2018	2019
Main scheme	Holding offer	2,180	1,910	2,260	2,350	2,160	1,830	1,640	1,890	1,940	2,060
	Free to be placed in Clearing	12,840	13,600	12,620	12,420	12,780	14,770	14,540	13,190	12,480	12,120

A.14 Main scheme applicants not currently placed from Scotland: 6 days after A level results day

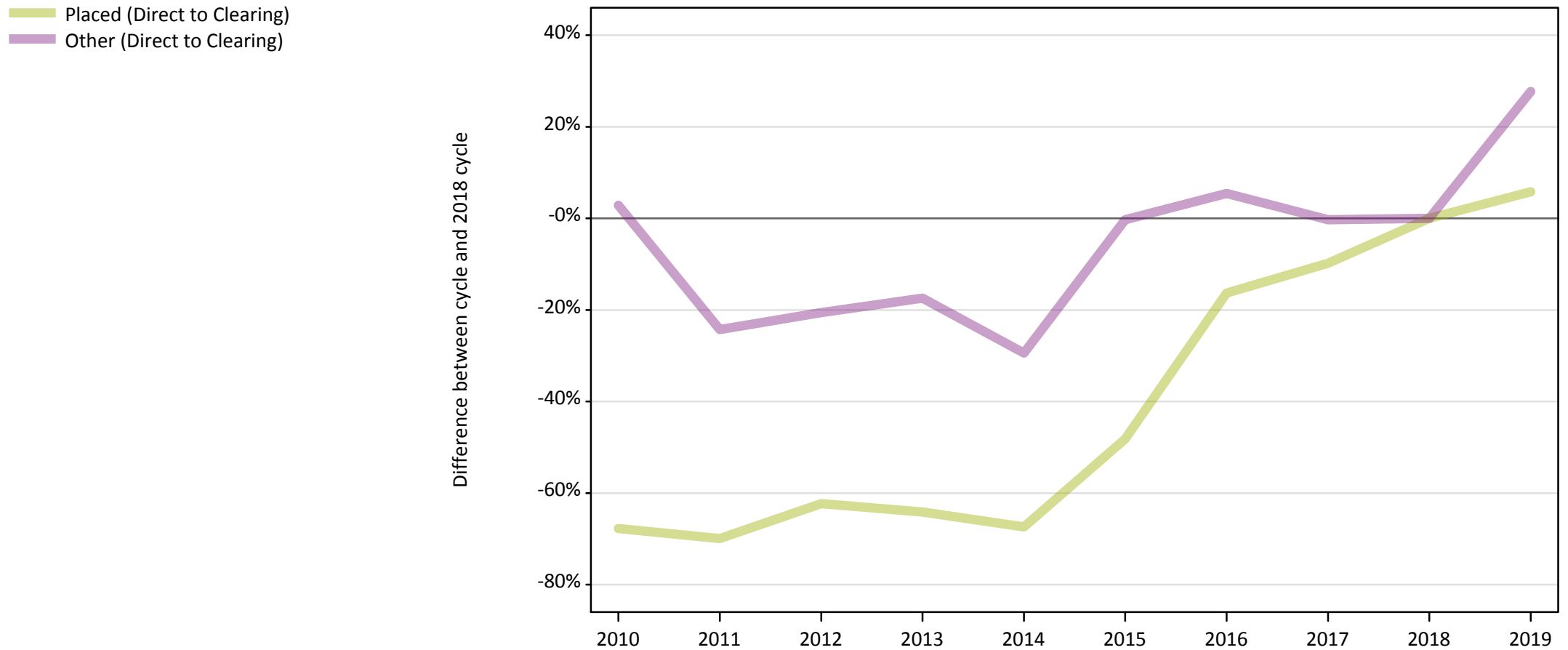
Applicants in unplaced states: difference between cycle and 2018 cycle

Applicant type	Status	2010	2011	2012	2013	2014	2015	2016	2017	2018	2019
Main scheme	Holding offer	12%	-1%	17%	21%	11%	-6%	-16%	-3%	0%	6%
	Free to be placed in Clearing	3%	9%	1%	-0%	2%	18%	17%	6%	0%	-3%

Note: The percentage change is not recorded in the above table for groups with fewer than 10 unplaced applicants in that cycle or in the 2018 cycle.

A.15 Direct to Clearing applicants from Scotland: 6 days after A level results day

Direct to Clearing: difference between cycle and 2018 cycle



Note: The percentage change is not plotted in the above chart for groups with fewer than 30 placed applicants in any one cycle.

A.16 Direct to Clearing applicants from Scotland: 6 days after A level results day

Direct to Clearing 6 days after A level results day

Applicant type	Status	2010	2011	2012	2013	2014	2015	2016	2017	2018	2019
Direct to Clearing	Placed (Direct to Clearing)	90	80	100	100	90	140	230	250	280	290
	Other (Direct to Clearing)	360	270	280	290	250	350	370	350	350	450

A.17 Direct to Clearing applicants from Scotland: 6 days after A level results day

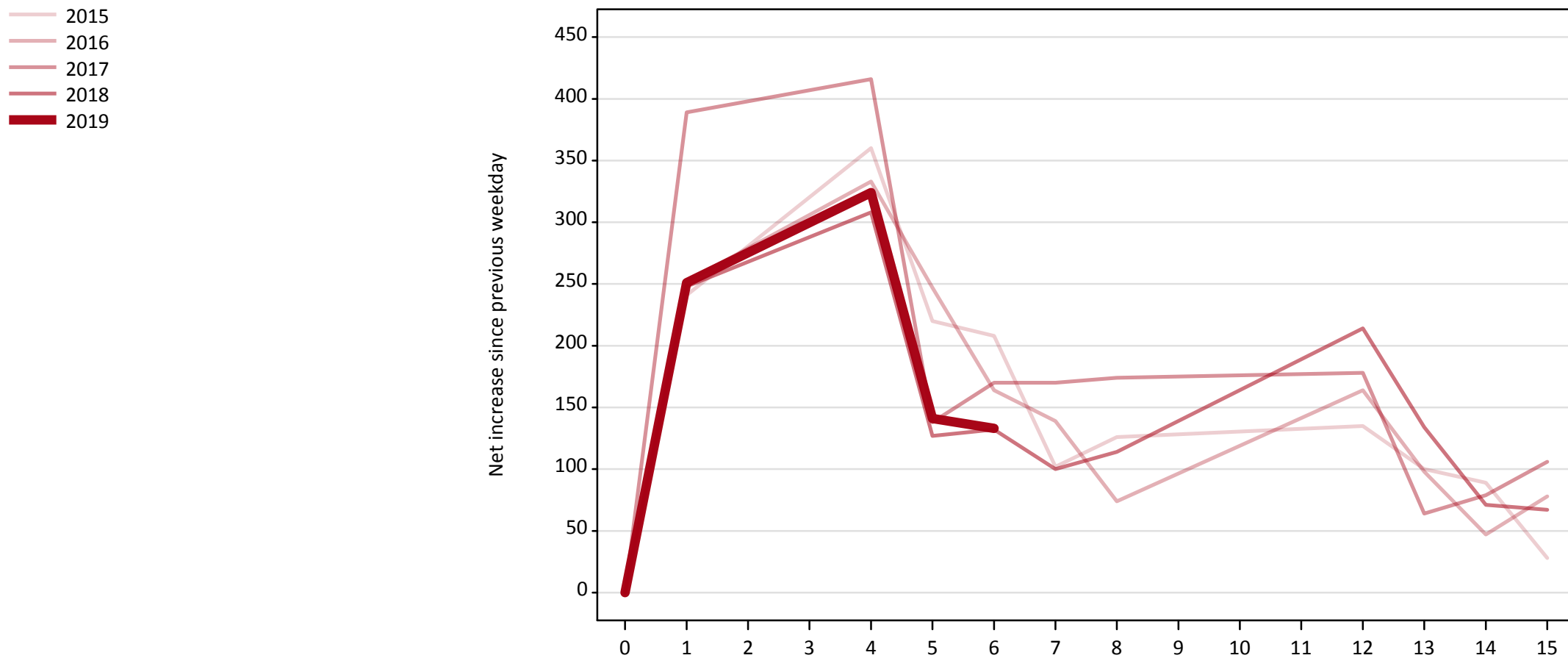
Direct to Clearing: difference between cycle and 2018 cycle

Applicant type	Status	2010	2011	2012	2013	2014	2015	2016	2017	2018	2019
Direct to Clearing	Placed (Direct to Clearing)	-68%	-70%	-62%	-64%	-67%	-48%	-16%	-10%	0%	6%
	Other (Direct to Clearing)	3%	-24%	-21%	-17%	-29%	-0%	5%	-0%	0%	28%

Note: The percentage change is not recorded in the above table for groups with fewer than 10 placed applicants in that cycle or in the 2018 cycle.

A.18 All Placed: Daily net change (from Scotland)

Net increase since previous weekday (2019 cycle up to 6 days after A level results day)

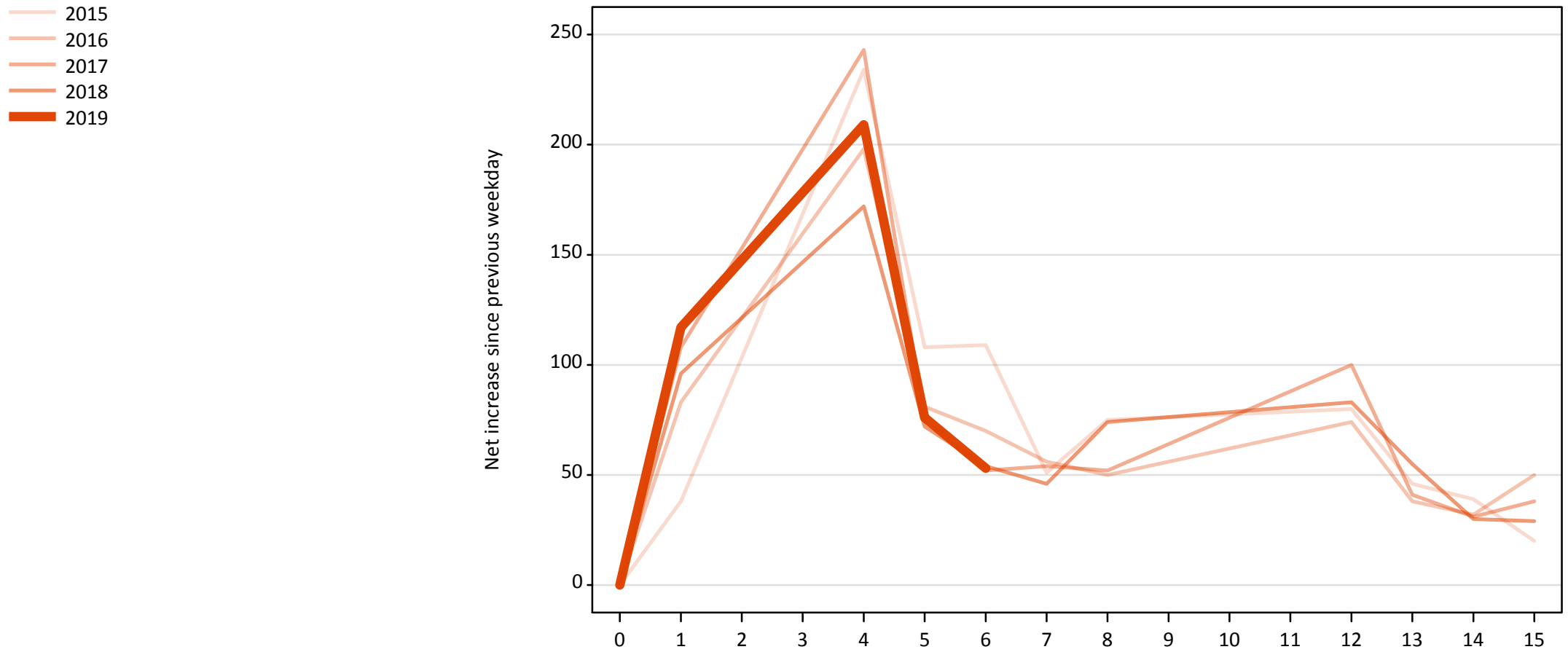


A.19 All Placed: Daily net change (from Scotland)

Net increase since previous weekday (2019 cycle up to 6 days after A level results day)

Applicant status, days since A level results day		2015	2016	2017	2018	2019
All Placed	0	0	0	0	0	0
	1	240	250	390	250	250
	4	360	330	420	310	320
	5	220	250	140	130	140
	6	210	160	170	130	130
	7	100	140	170	100	
	8	130	70	170	110	
	12	140	160	180	210	
	13	100	100	60	130	
	14	90	50	80	70	
	15	30	80	110	70	

A.20 Placed through Clearing only: Daily net change (from Scotland)
Net increase since previous weekday (2019 cycle up to 6 days after A level results day)



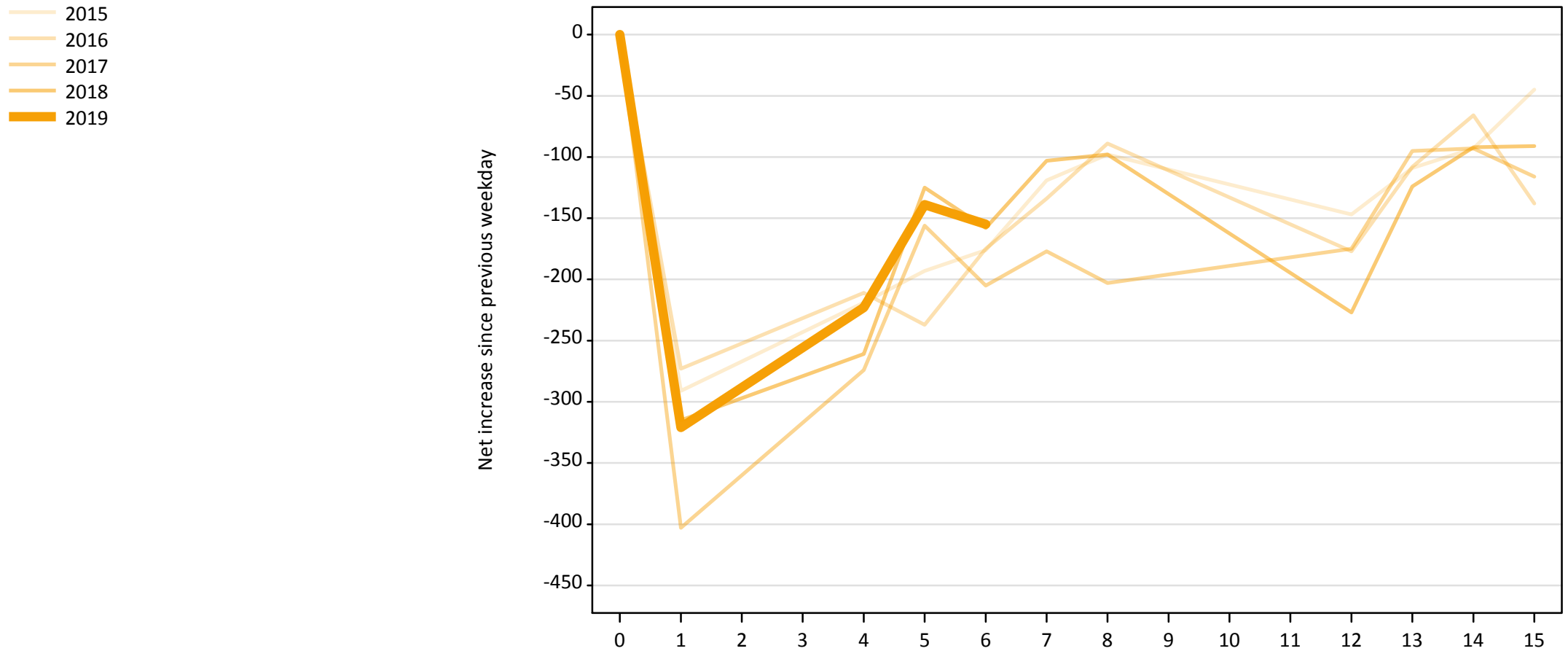
A.21 Placed through Clearing only: Daily net change (from Scotland)

Net increase since previous weekday (2019 cycle up to 6 days after A level results day)

Applicant status, days since A level results day		2015	2016	2017	2018	2019
Placed through Clearing only	0	0	0	0	0	0
	1	40	80	110	100	120
	4	230	200	240	170	210
	5	110	80	80	70	80
	6	110	70	50	50	50
	7	50	60	50	50	
	8	80	50	50	70	
	12	80	70	100	80	
	13	50	40	40	60	
	14	40	30	30	30	
	15	20	50	40	30	

A.22 Holding Offer: Daily net change (from Scotland)

Net increase since previous weekday (2019 cycle up to 6 days after A level results day)



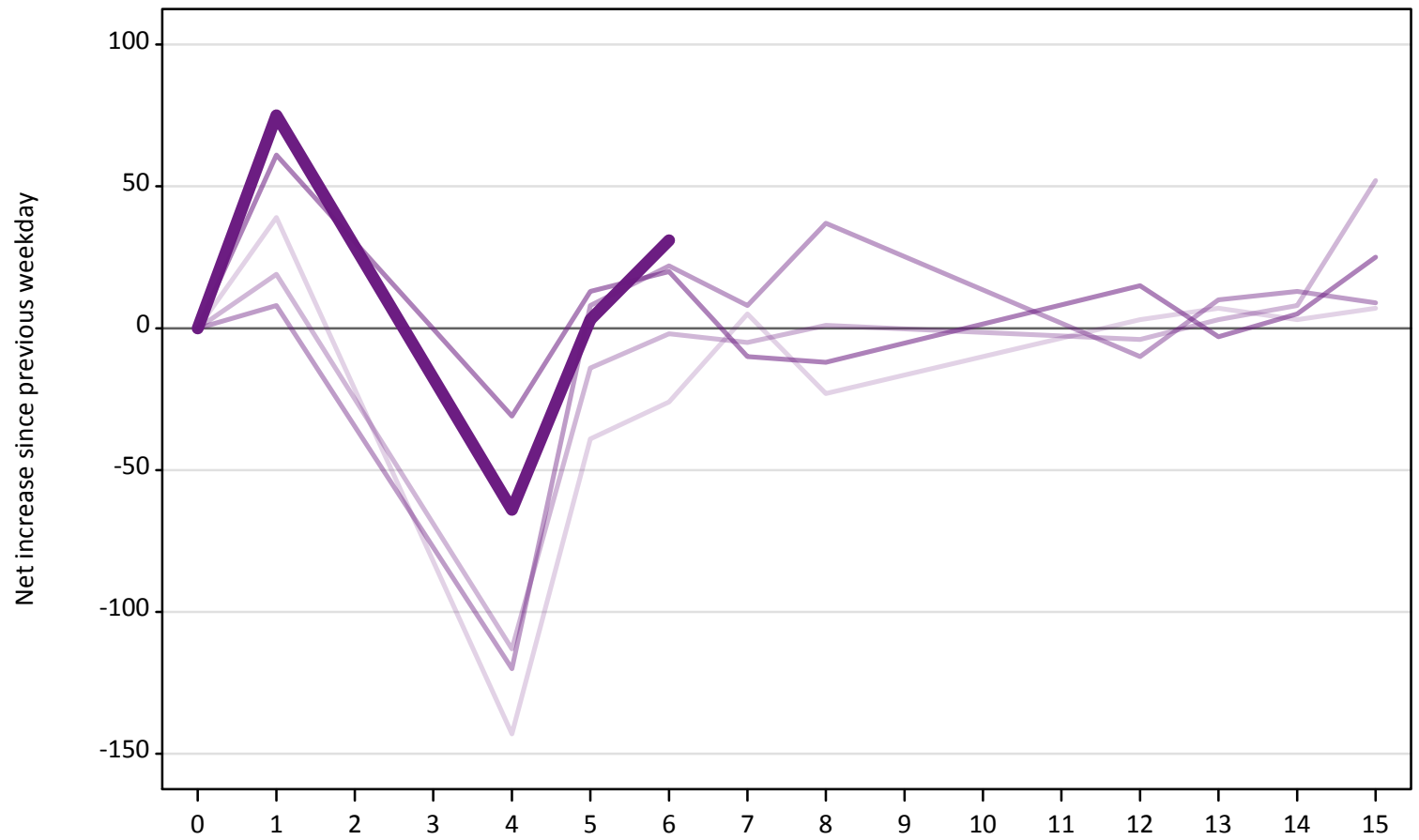
A.23 Holding Offer: Daily net change (from Scotland)

Net increase since previous weekday (2019 cycle up to 6 days after A level results day)

Applicant status, days since A level results day		2015	2016	2017	2018	2019
Holding Offer	0	0	0	0	0	0
	1	-290	-270	-400	-320	-320
	4	-220	-210	-270	-260	-220
	5	-190	-240	-160	-130	-140
	6	-180	-180	-210	-160	-160
	7	-120	-130	-180	-100	
	8	-100	-90	-200	-100	
	12	-150	-180	-180	-230	
	13	-110	-110	-100	-120	
	14	-90	-70	-90	-90	
	15	-50	-140	-120	-90	

A.24 Free to be placed in Clearing: Daily net change (from Scotland)
Net increase since previous weekday (2019 cycle up to 6 days after A level results day)

- 2015
- 2016
- 2017
- 2018
- 2019



A.25 Free to be placed in Clearing: Daily net change (from Scotland)

Net increase since previous weekday (2019 cycle up to 6 days after A level results day)

Applicant status, days since A level results day		2015	2016	2017	2018	2019
Free to be placed in Clearing	0	0	0	0	0	0
	1	40	20	10	60	80
	4	-140	-110	-120	-30	-60
	5	-40	-10	10	10	0
	6	-30	0	20	20	30
	7	10	-10	10	-10	
	8	-20	0	40	-10	
	12	0	0	-10	20	
	13	10	0	10	0	
	14	0	10	10	10	
	15	10	50	10	30	