

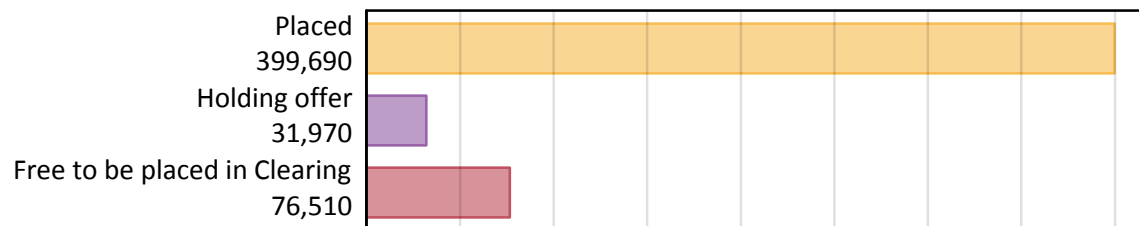
Daily Clearing Analysis: Overview

Analysis at 00:05 on Wednesday 21 August 2019 (6 days after A level results day)

A.1 Applicants by type and status from the UK, 2019 cycle

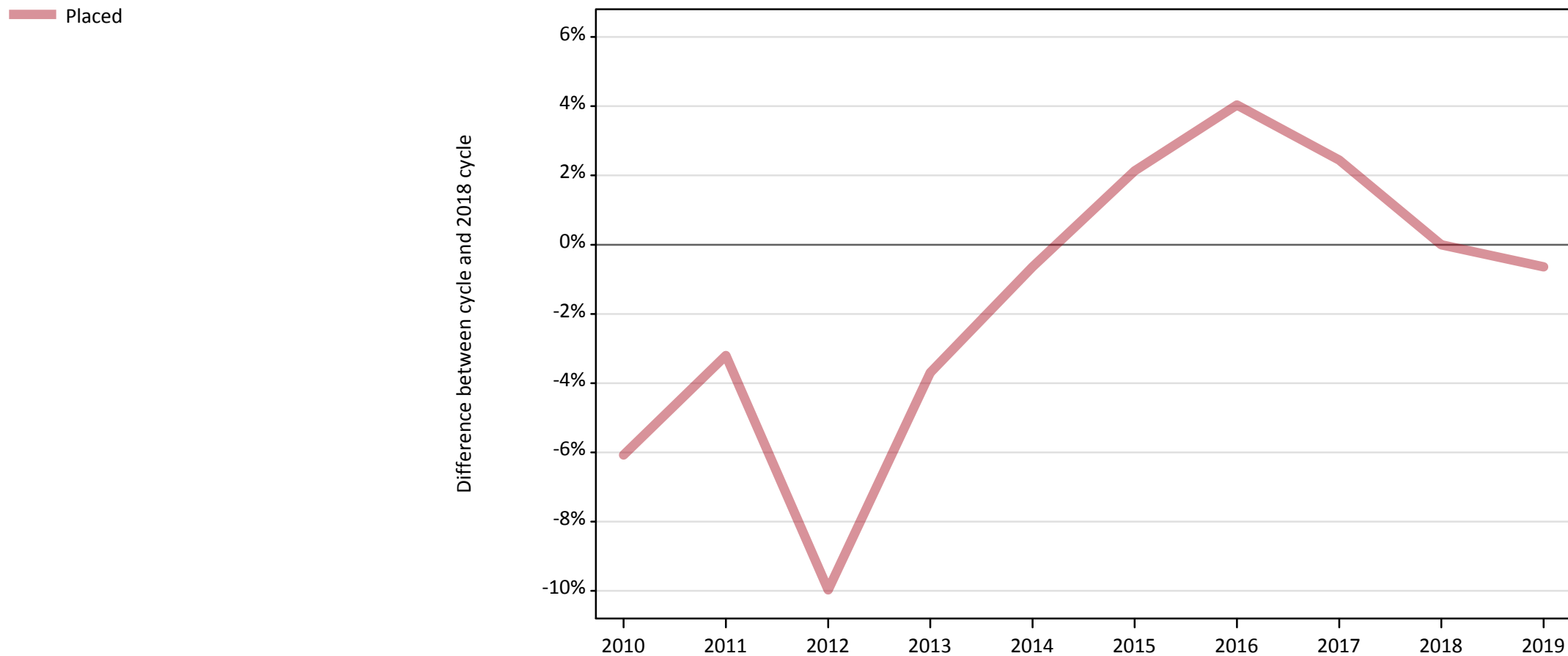
Applicant type	Status	2019
Main scheme	Placed (Clearing)	35,410
	Placed (Adjustment)	540
	Placed (Firm)	318,630
	Placed (Insurance)	27,640
	Placed (Other)	9,980
	Holding offer	31,970
	Free to be placed in Clearing	76,510
Direct to Clearing	Placed (Direct to Clearing)	7,480
	Other (Direct to Clearing)	7,710
All applicants	Placed	399,690

A.2 Summary of applicants who are placed, holding offers or free to be placed in Clearing (the UK)



A.3 All placed applicants from the UK: 6 days after A level results day

All placed applicants: difference between cycle and 2018 cycle



Note: The percentage change is not plotted in the above chart for groups with fewer than 30 placed applicants in any one cycle.

A.4 All placed applicants from the UK: 6 days after A level results day

All placed applicants: applicants at 6 days after A level results day

Applicant type	Status	2010	2011	2012	2013	2014	2015	2016	2017	2018	2019
All applicants	Placed	377,830	389,390	362,170	387,400	399,700	410,840	418,500	412,110	402,280	399,690

A.5 All placed applicants from the UK: 6 days after A level results day

All placed applicants: difference between cycle and 2018 cycle

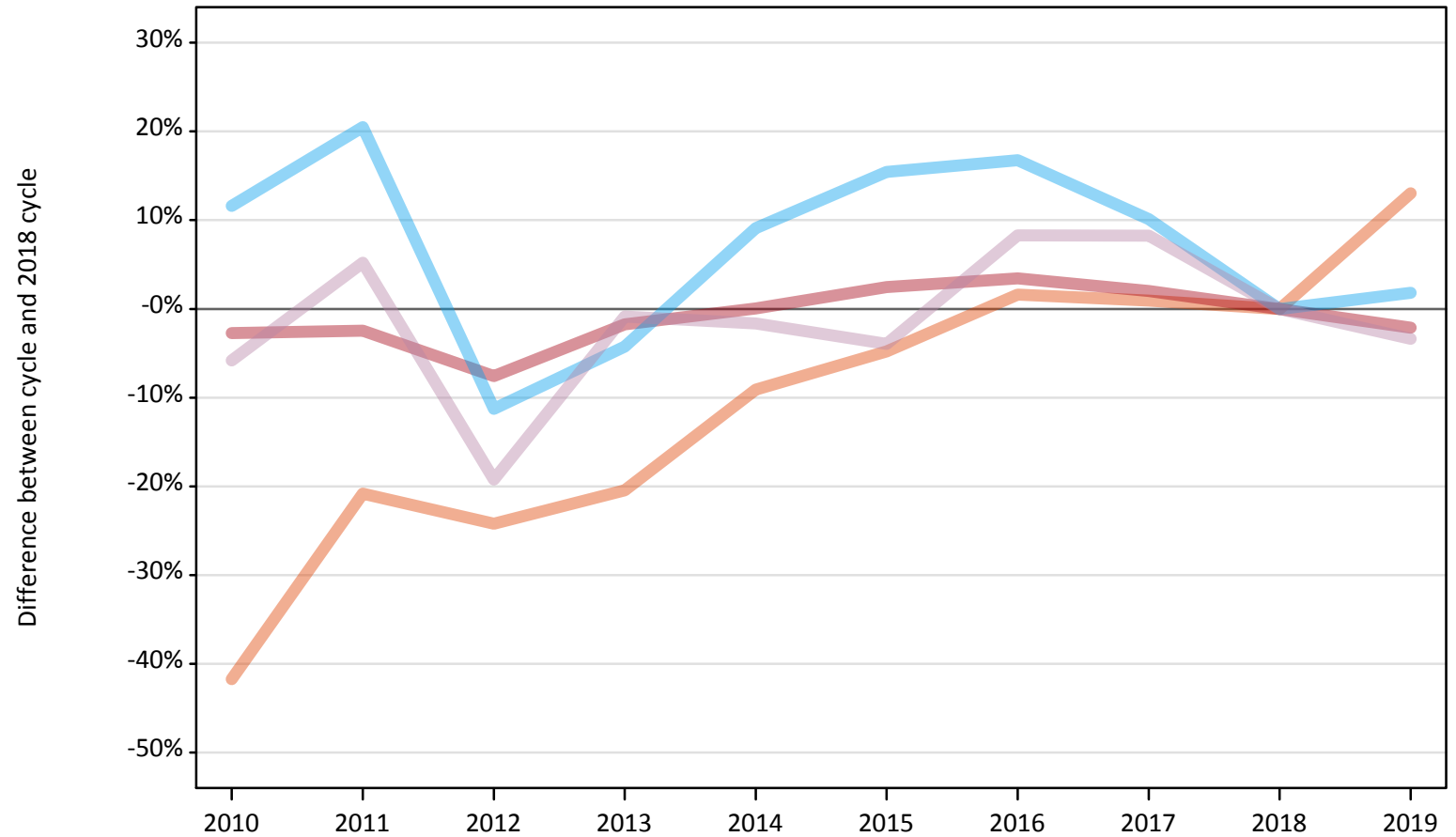
Applicant type	Status	2010	2011	2012	2013	2014	2015	2016	2017	2018	2019
All applicants	Placed	-6%	-3%	-10%	-4%	-1%	2%	4%	2%	0%	-1%

Note: The percentage change is not recorded in the above table for groups with fewer than 10 placed applicants in that cycle or in the 2018 cycle.

A.6 Placed main scheme applicants from the UK: 6 days after A level results day

All Main scheme placed routes (excluding Adjustment): difference between cycle and 2018 cycle

- Placed (Clearing)
- Placed (Firm)
- Placed (Insurance)
- Placed (Other)



Note: The percentage change is not plotted in the above chart for groups with fewer than 30 placed applicants in any one cycle.

A.7 Placed main scheme applicants from the UK: 6 days after A level results day

All Main scheme placed routes (excluding Adjustment): applicants at 6 days after A level results day

Applicant type	Status	2010	2011	2012	2013	2014	2015	2016	2017	2018	2019
Main scheme	Placed (Clearing)	18,260	24,810	23,750	24,920	28,480	29,830	31,840	31,620	31,330	35,410
	Placed (Firm)	316,670	317,520	300,850	319,900	325,680	333,580	336,790	332,100	325,550	318,630
	Placed (Insurance)	30,300	32,710	24,080	25,990	29,620	31,340	31,700	29,890	27,150	27,640
	Placed (Other)	9,730	10,870	8,340	10,240	10,160	9,920	11,190	11,180	10,330	9,980

A.8 Placed main scheme applicants from the UK: 6 days after A level results day

All Main scheme placed routes (excluding Adjustment): difference between cycle and 2018 cycle

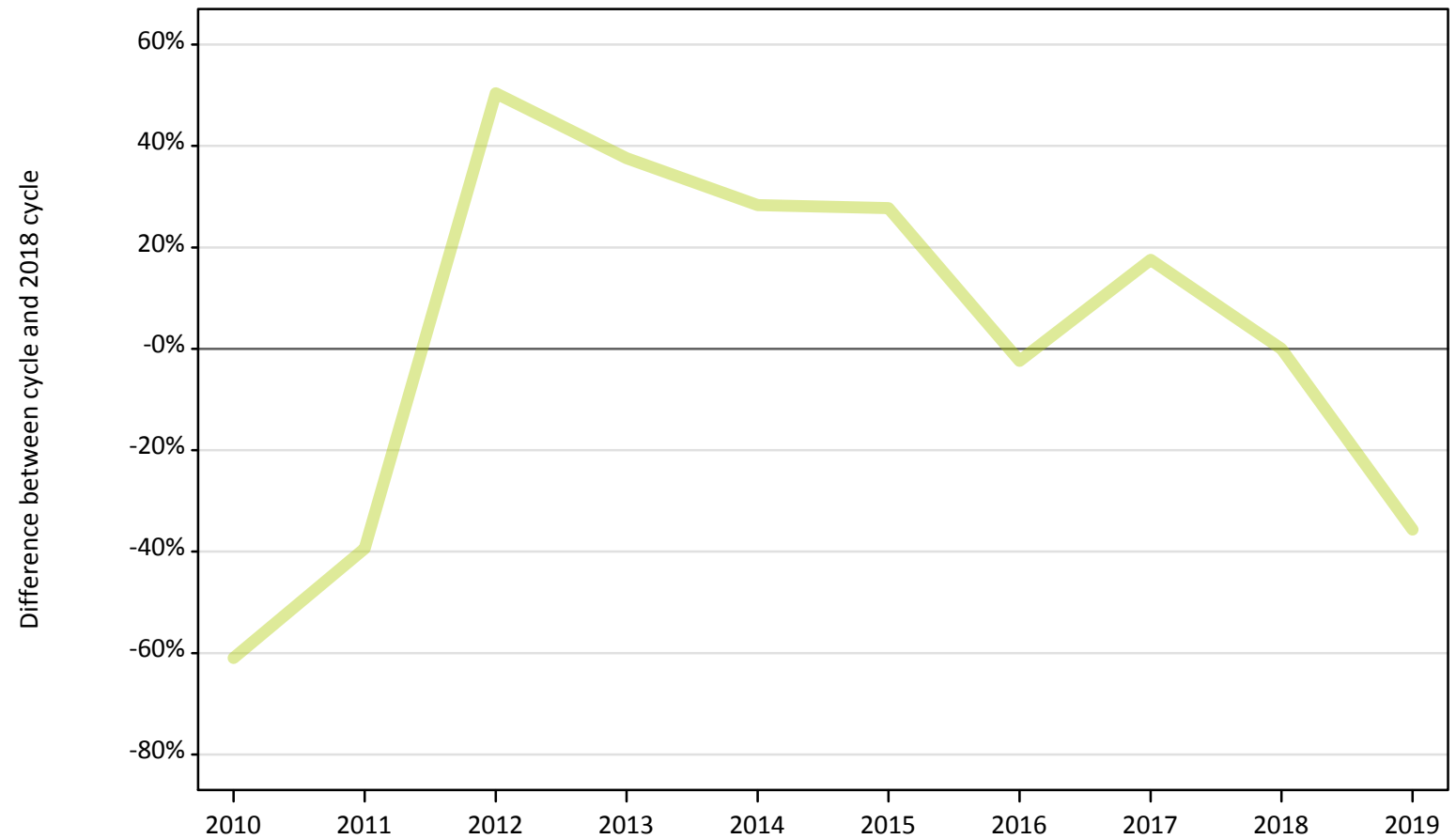
Applicant type	Status	2010	2011	2012	2013	2014	2015	2016	2017	2018	2019
Main scheme	Placed (Clearing)	-42%	-21%	-24%	-20%	-9%	-5%	2%	1%	0%	13%
	Placed (Firm)	-3%	-2%	-8%	-2%	0%	2%	3%	2%	0%	-2%
	Placed (Insurance)	12%	20%	-11%	-4%	9%	15%	17%	10%	0%	2%
	Placed (Other)	-6%	5%	-19%	-1%	-2%	-4%	8%	8%	0%	-3%

Note: The percentage change is not recorded in the above table for groups with fewer than 10 placed applicants in that cycle or in the 2018 cycle.

A.9 Main scheme applicants placed through adjustment: 6 days after A level results day

Placed through adjustment: difference between cycle and 2018 cycle

Placed (Adjustment)



Note: The percentage change is not plotted in the above chart for groups with fewer than 30 placed applicants in any one cycle.

A.10 Main scheme applicants placed through adjustment: 6 days after A level results day

Placed through adjustment: applicants at 6 days after A level results day

Applicant type	Status	2010	2011	2012	2013	2014	2015	2016	2017	2018	2019
Main scheme	Placed (Adjustment)	330	510	1,250	1,150	1,070	1,060	810	980	830	540

A.11 Main scheme applicants placed through adjustment: 6 days after A level results day

Placed through adjustment: difference between cycle and 2018 cycle

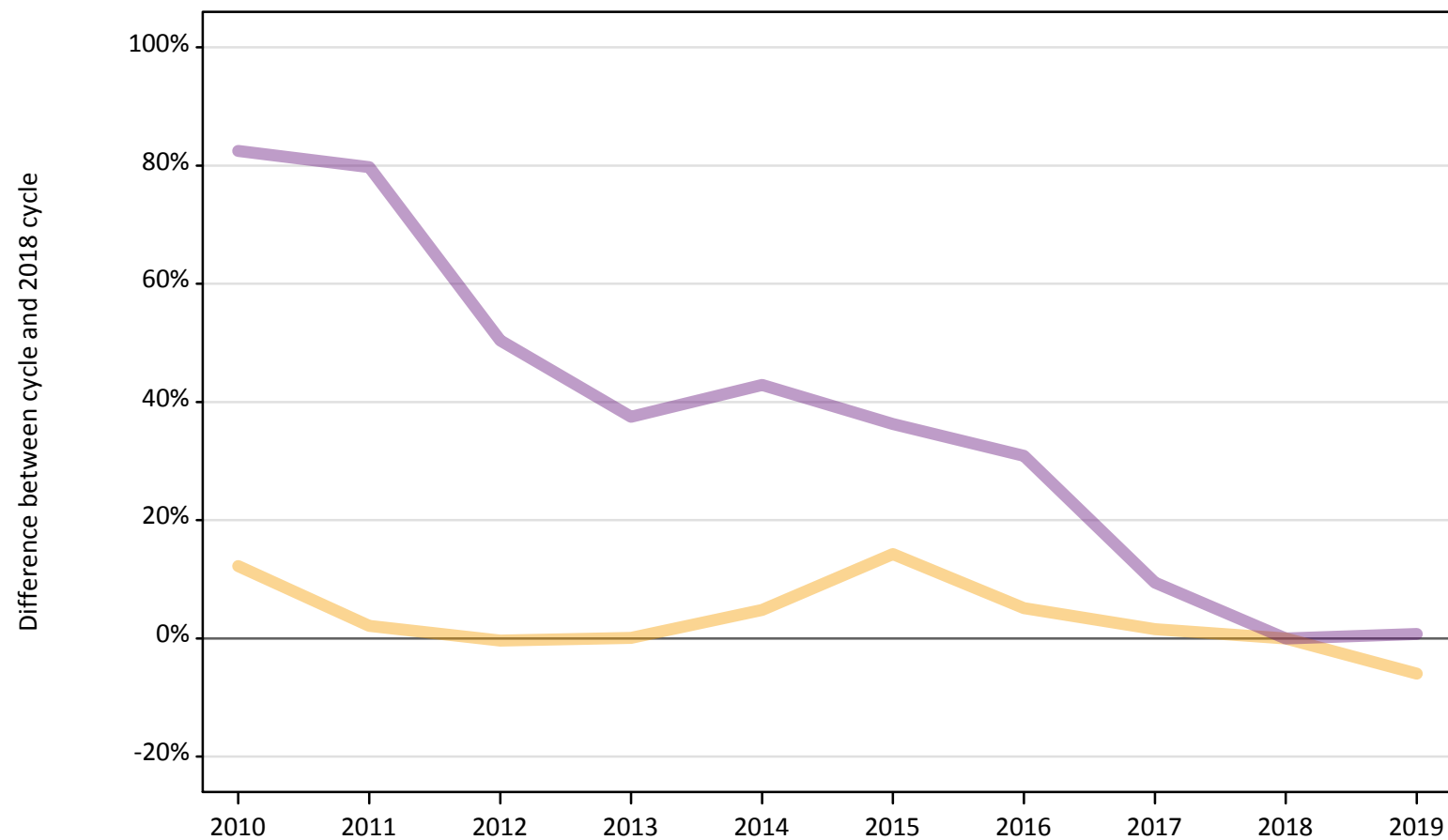
Applicant type	Status	2010	2011	2012	2013	2014	2015	2016	2017	2018	2019
Main scheme	Placed (Adjustment)	-61%	-39%	50%	38%	28%	28%	-2%	18%	0%	-36%

Note: The percentage change is not recorded in the above table for groups with fewer than 10 placed applicants in that cycle or in the 2018 cycle.

A.12 Main scheme applicants not currently placed from the UK: 6 days after A level results day

Applicants in unplaced states: difference between cycle and 2018 cycle

— Holding offer
— Free to be placed in Clearing



Note: The percentage change is not plotted in the above chart for groups with fewer than 30 unplaced applicants in any one cycle.

A.13 Main scheme applicants not currently placed from the UK: 6 days after A level results day

Applicants in unplaced states: applicants at 6 days after A level results day

Applicant type	Status	2010	2011	2012	2013	2014	2015	2016	2017	2018	2019
Main scheme	Holding offer	38,160	34,730	33,880	34,030	35,640	38,850	35,740	34,530	34,000	31,970
	Free to be placed in Clearing	138,550	136,470	114,200	104,400	108,480	103,460	99,380	83,100	75,930	76,510

A.14 Main scheme applicants not currently placed from the UK: 6 days after A level results day

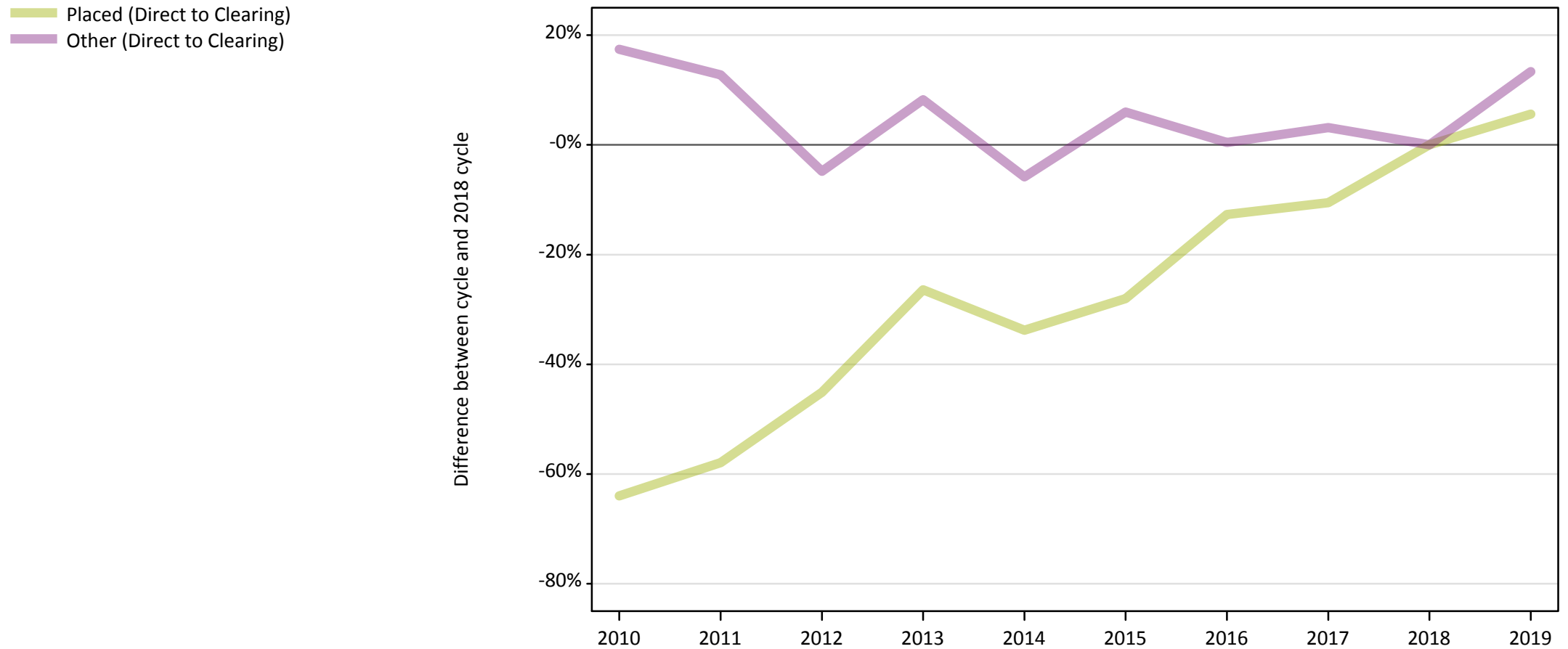
Applicants in unplaced states: difference between cycle and 2018 cycle

Applicant type	Status	2010	2011	2012	2013	2014	2015	2016	2017	2018	2019
Main scheme	Holding offer	12%	2%	-0%	0%	5%	14%	5%	2%	0%	-6%
	Free to be placed in Clearing	82%	80%	50%	37%	43%	36%	31%	9%	0%	1%

Note: The percentage change is not recorded in the above table for groups with fewer than 10 unplaced applicants in that cycle or in the 2018 cycle.

A.15 Direct to Clearing applicants from the UK: 6 days after A level results day

Direct to Clearing: difference between cycle and 2018 cycle



Note: The percentage change is not plotted in the above chart for groups with fewer than 30 placed applicants in any one cycle.

A.16 Direct to Clearing applicants from the UK: 6 days after A level results day

Direct to Clearing 6 days after A level results day

Applicant type	Status	2010	2011	2012	2013	2014	2015	2016	2017	2018	2019
Direct to Clearing	Placed (Direct to Clearing)	2,550	2,980	3,890	5,210	4,690	5,100	6,190	6,340	7,080	7,480
	Other (Direct to Clearing)	7,980	7,670	6,470	7,360	6,400	7,210	6,830	7,010	6,800	7,710

A.17 Direct to Clearing applicants from the UK: 6 days after A level results day

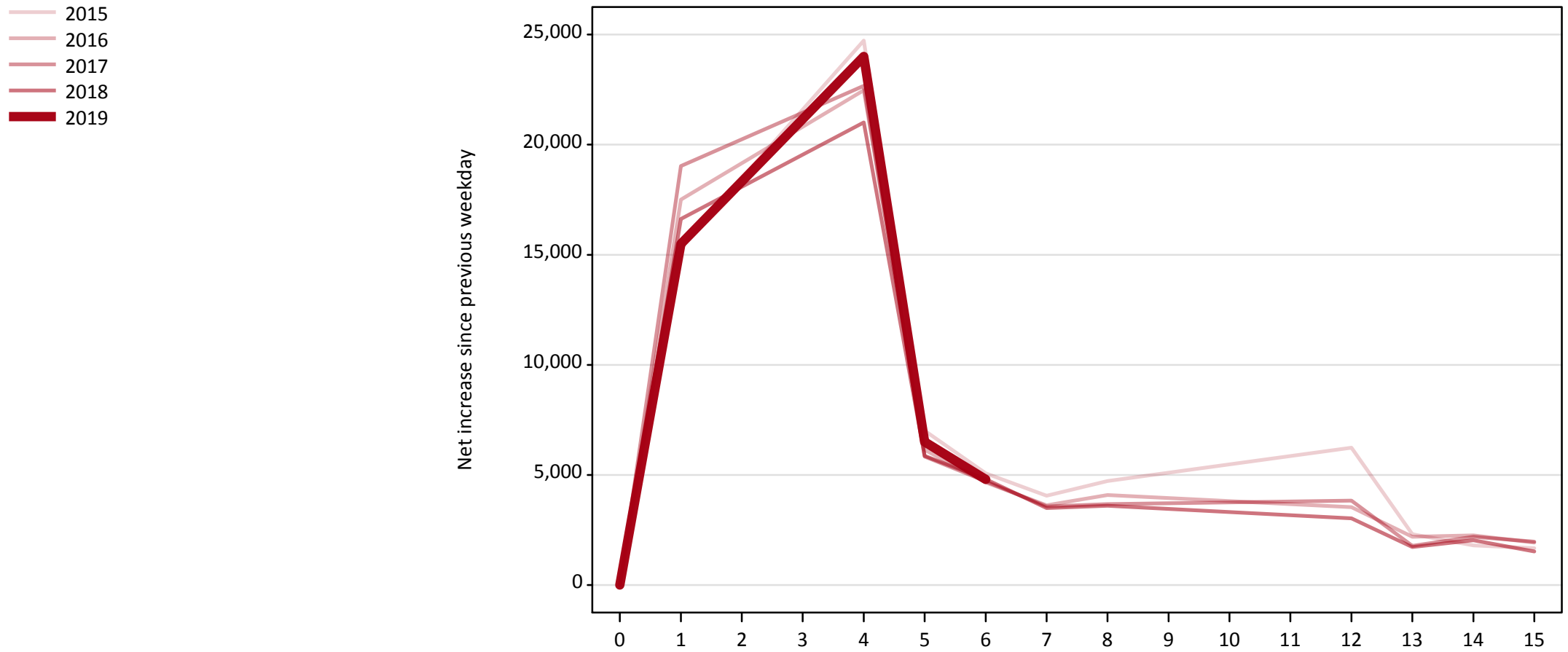
Direct to Clearing: difference between cycle and 2018 cycle

Applicant type	Status	2010	2011	2012	2013	2014	2015	2016	2017	2018	2019
Direct to Clearing	Placed (Direct to Clearing)	-64%	-58%	-45%	-26%	-34%	-28%	-13%	-11%	0%	6%
	Other (Direct to Clearing)	17%	13%	-5%	8%	-6%	6%	0%	3%	0%	13%

Note: The percentage change is not recorded in the above table for groups with fewer than 10 placed applicants in that cycle or in the 2018 cycle.

A.18 All Placed: Daily net change (from the UK)

Net increase since previous weekday (2019 cycle up to 6 days after A level results day)

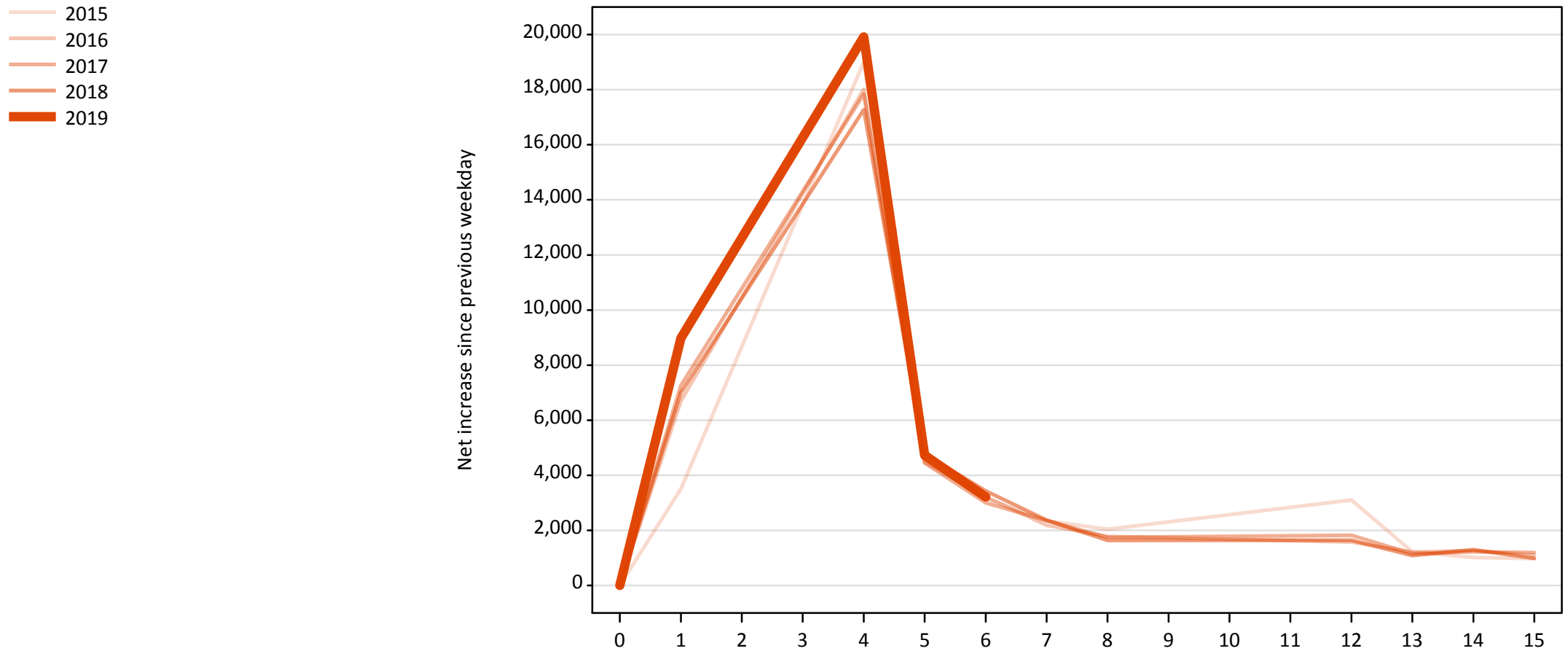


A.19 All Placed: Daily net change (from the UK)

Net increase since previous weekday (2019 cycle up to 6 days after A level results day)

Applicant status, days since A level results day		2015	2016	2017	2018	2019
All Placed	0	0	0	0	0	0
	1	15,350	17,510	19,030	16,620	15,490
	4	24,730	22,470	22,670	21,010	24,010
	5	7,020	6,140	5,840	5,870	6,510
	6	5,070	4,660	4,710	4,810	4,800
	7	4,060	3,630	3,570	3,500	
	8	4,720	4,090	3,670	3,600	
	12	6,240	3,530	3,840	3,020	
	13	2,310	2,200	1,780	1,720	
	14	1,810	2,260	2,200	2,030	
	15	1,680	1,920	1,970	1,530	

A.20 Placed through Clearing only: Daily net change (from the UK)
Net increase since previous weekday (2019 cycle up to 6 days after A level results day)

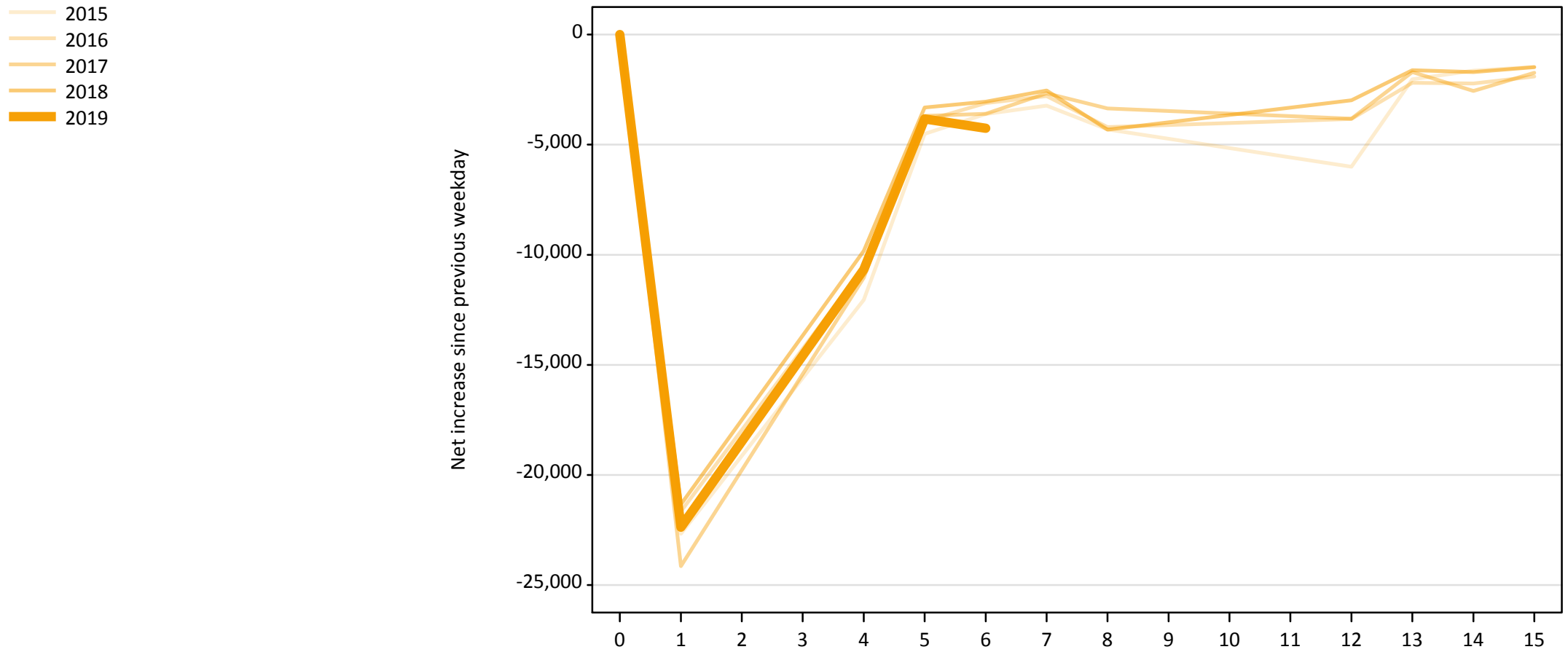


A.21 Placed through Clearing only: Daily net change (from the UK)

Net increase since previous weekday (2019 cycle up to 6 days after A level results day)

Applicant status, days since A level results day		2015	2016	2017	2018	2019
Placed through Clearing only	0	0	0	0	0	0
	1	3,510	6,700	7,260	7,010	8,980
	4	19,000	18,010	17,840	17,270	19,910
	5	4,820	4,470	4,450	4,770	4,730
	6	3,170	3,220	3,000	3,430	3,210
	7	2,350	2,180	2,360	2,370	
	8	2,040	1,780	1,740	1,640	
	12	3,100	1,570	1,820	1,640	
	13	1,220	1,210	1,150	1,080	
	14	1,020	1,270	1,220	1,300	
	15	980	1,090	1,200	980	

A.22 Holding Offer: Daily net change (from the UK)
Net increase since previous weekday (2019 cycle up to 6 days after A level results day)

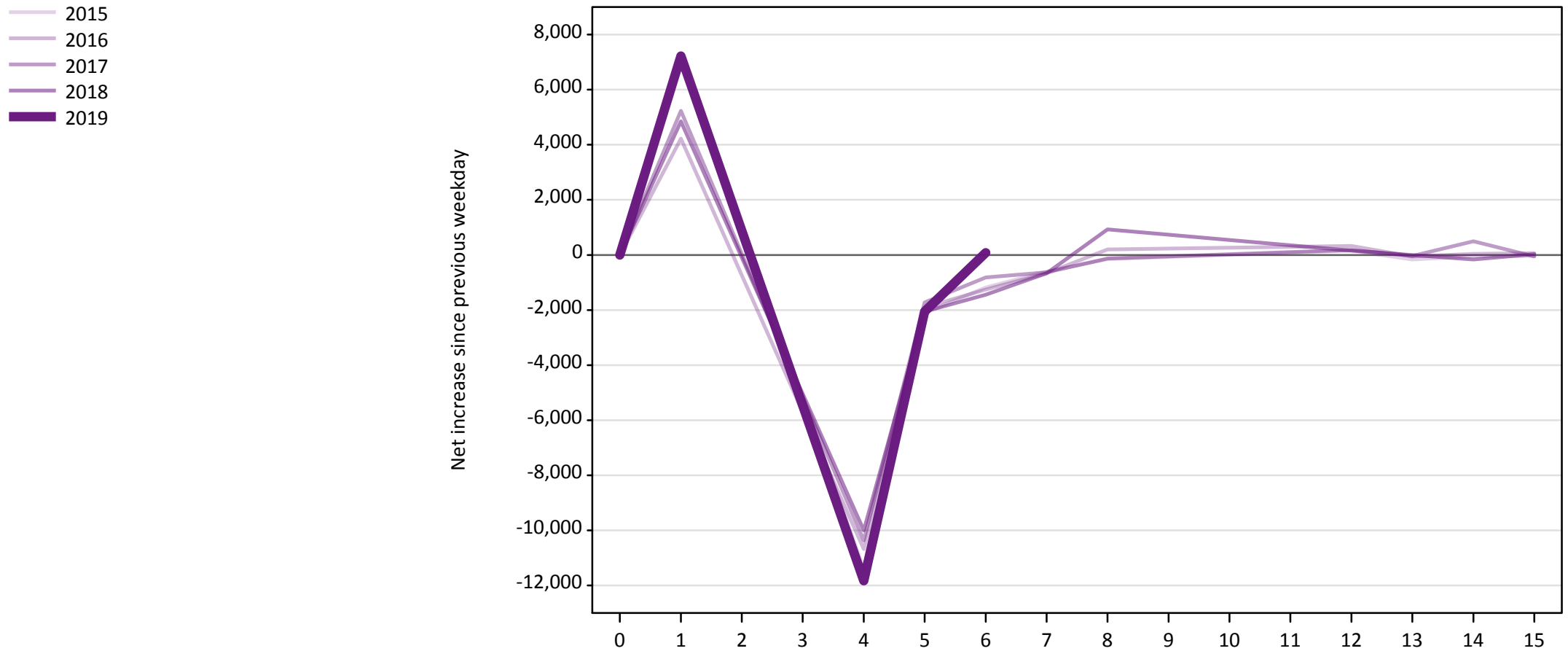


A.23 Holding Offer: Daily net change (from the UK)

Net increase since previous weekday (2019 cycle up to 6 days after A level results day)

Applicant status, days since A level results day		2015	2016	2017	2018	2019
Holding Offer	0	0	0	0	0	0
	1	-22,670	-21,650	-24,140	-21,330	-22,370
	4	-12,050	-10,570	-11,040	-9,830	-10,670
	5	-4,510	-3,920	-3,690	-3,320	-3,840
	6	-3,610	-3,110	-3,600	-3,040	-4,250
	7	-3,230	-2,790	-2,670	-2,540	
	8	-4,310	-4,200	-3,360	-4,320	
	12	-6,000	-3,830	-3,830	-2,980	
	13	-2,030	-2,190	-1,700	-1,620	
	14	-1,640	-2,220	-2,560	-1,700	
	15	-1,470	-1,900	-1,740	-1,480	

A.24 Free to be placed in Clearing: Daily net change (from the UK)
Net increase since previous weekday (2019 cycle up to 6 days after A level results day)



A.25 Free to be placed in Clearing: Daily net change (from the UK)

Net increase since previous weekday (2019 cycle up to 6 days after A level results day)

Applicant status, days since A level results day		2015	2016	2017	2018	2019
Free to be placed in Clearing	0	0	0	0	0	0
	1	7,260	4,220	5,230	4,850	7,220
	4	-11,400	-10,680	-10,370	-10,000	-11,830
	5	-2,100	-1,900	-1,730	-2,050	-2,060
	6	-1,180	-1,260	-820	-1,450	80
	7	-610	-660	-630	-660	
	8	-150	200	-130	920	
	12	150	320	190	160	
	13	-170	-50	-40	0	
	14	-50	40	500	-160	
	15	-40	60	-50	30	