

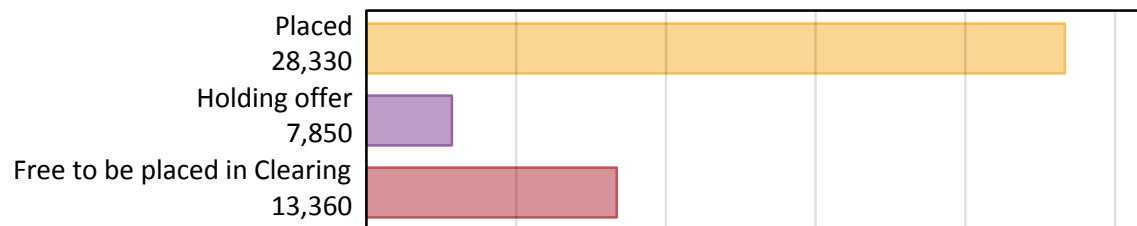
# Daily Clearing Analysis: Overview

Analysis at 00:05 on Wednesday 21 August 2019 (6 days after A level results day)

## A.1 Applicants by type and status from the EU - excluding UK, 2019 cycle

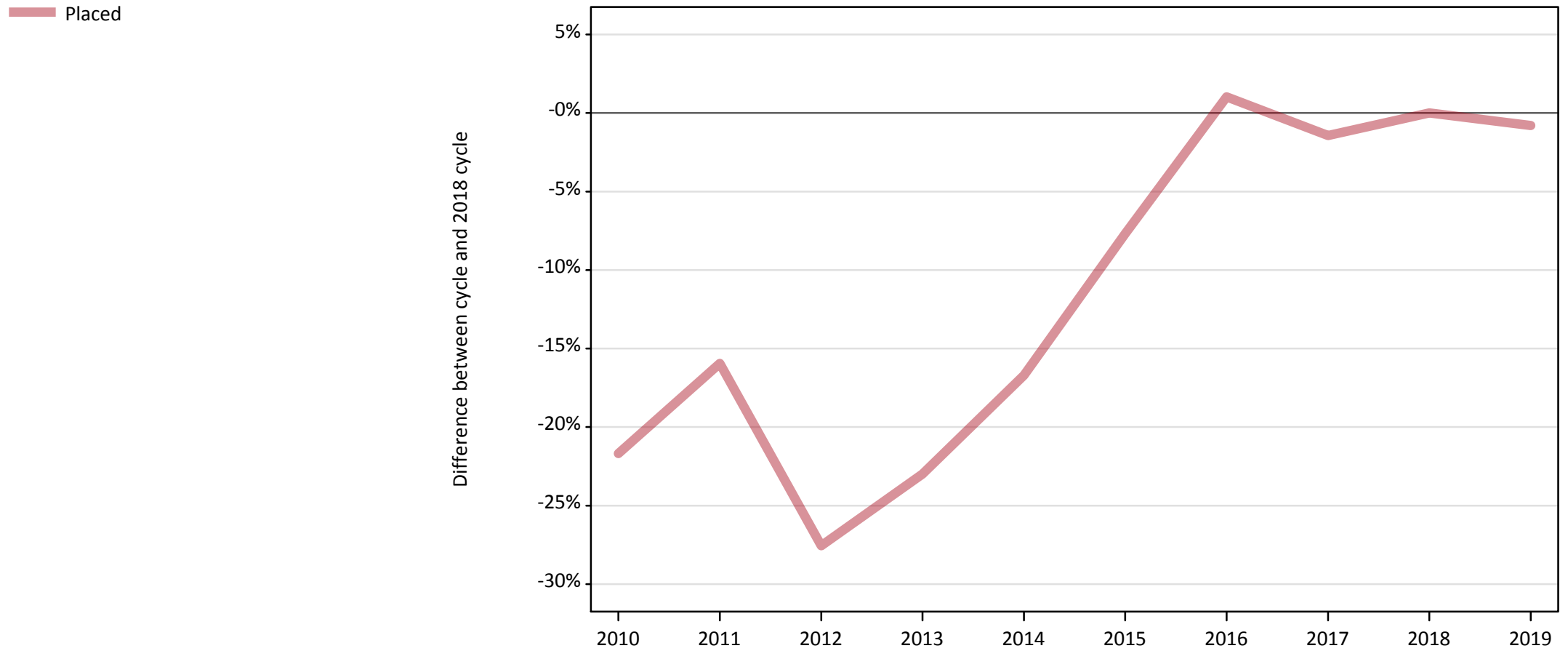
Applicant type	Status	2019
Main scheme	Placed (Clearing)	1,230
	Placed (Adjustment)	20
	Placed (Firm)	23,500
	Placed (Insurance)	2,040
	Placed (Other)	1,200
	Holding offer	7,850
	Free to be placed in Clearing	13,360
Direct to Clearing	Placed (Direct to Clearing)	330
	Other (Direct to Clearing)	390
All applicants	Placed	28,330

## A.2 Summary of applicants who are placed, holding offers or free to be placed in Clearing ( the EU - excluding UK )



### A.3 All placed applicants from the EU - excluding UK: 6 days after A level results day

All placed applicants: difference between cycle and 2018 cycle



Note: The percentage change is not plotted in the above chart for groups with fewer than 30 placed applicants in any one cycle.

#### A.4 All placed applicants from the EU - excluding UK: 6 days after A level results day

All placed applicants: applicants at 6 days after A level results day

Applicant type	Status	2010	2011	2012	2013	2014	2015	2016	2017	2018	2019
All applicants	Placed	22,360	24,000	20,690	21,990	23,790	26,360	28,850	28,140	28,550	28,330

#### A.5 All placed applicants from the EU - excluding UK: 6 days after A level results day

All placed applicants: difference between cycle and 2018 cycle

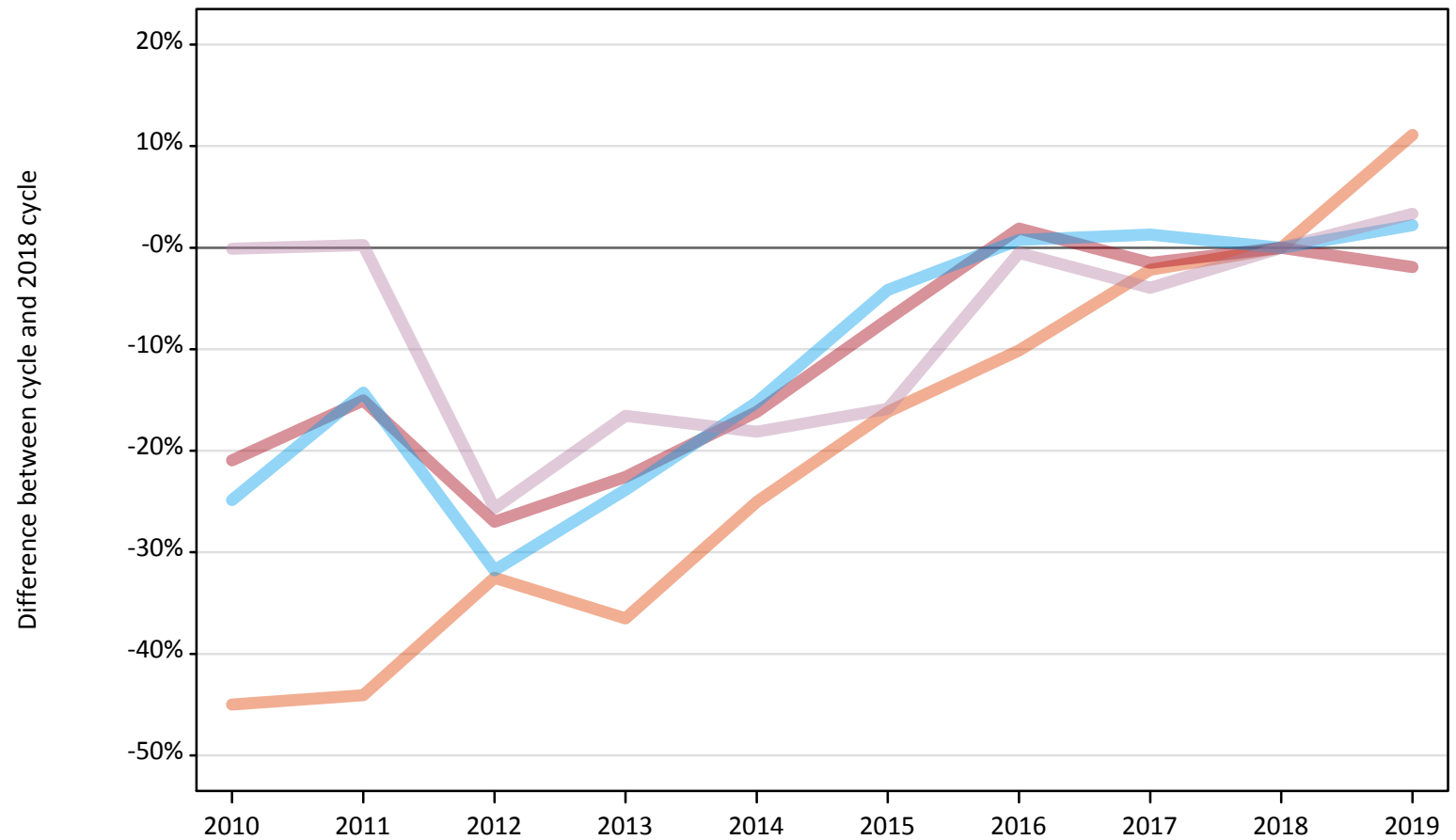
Applicant type	Status	2010	2011	2012	2013	2014	2015	2016	2017	2018	2019
All applicants	Placed	-22%	-16%	-28%	-23%	-17%	-8%	1%	-1%	0%	-1%

Note: The percentage change is not recorded in the above table for groups with fewer than 10 placed applicants in that cycle or in the 2018 cycle.

## A.6 Placed main scheme applicants from the EU - excluding UK: 6 days after A level results day

All Main scheme placed routes (excluding Adjustment): difference between cycle and 2018 cycle

- Placed (Clearing)
- Placed (Firm)
- Placed (Insurance)
- Placed (Other)



Note: The percentage change is not plotted in the above chart for groups with fewer than 30 placed applicants in any one cycle.

### A.7 Placed main scheme applicants from the EU - excluding UK: 6 days after A level results day

All Main scheme placed routes (excluding Adjustment): applicants at 6 days after A level results day

Applicant type	Status	2010	2011	2012	2013	2014	2015	2016	2017	2018	2019
Main scheme	Placed (Clearing)	610	620	750	700	830	930	1,000	1,080	1,110	1,230
	Placed (Firm)	18,930	20,350	17,490	18,540	20,080	22,260	24,400	23,590	23,950	23,500
	Placed (Insurance)	1,500	1,710	1,360	1,520	1,700	1,920	2,010	2,030	2,000	2,040
	Placed (Other)	1,160	1,170	870	970	950	980	1,160	1,120	1,170	1,200

### A.8 Placed main scheme applicants from the EU - excluding UK: 6 days after A level results day

All Main scheme placed routes (excluding Adjustment): difference between cycle and 2018 cycle

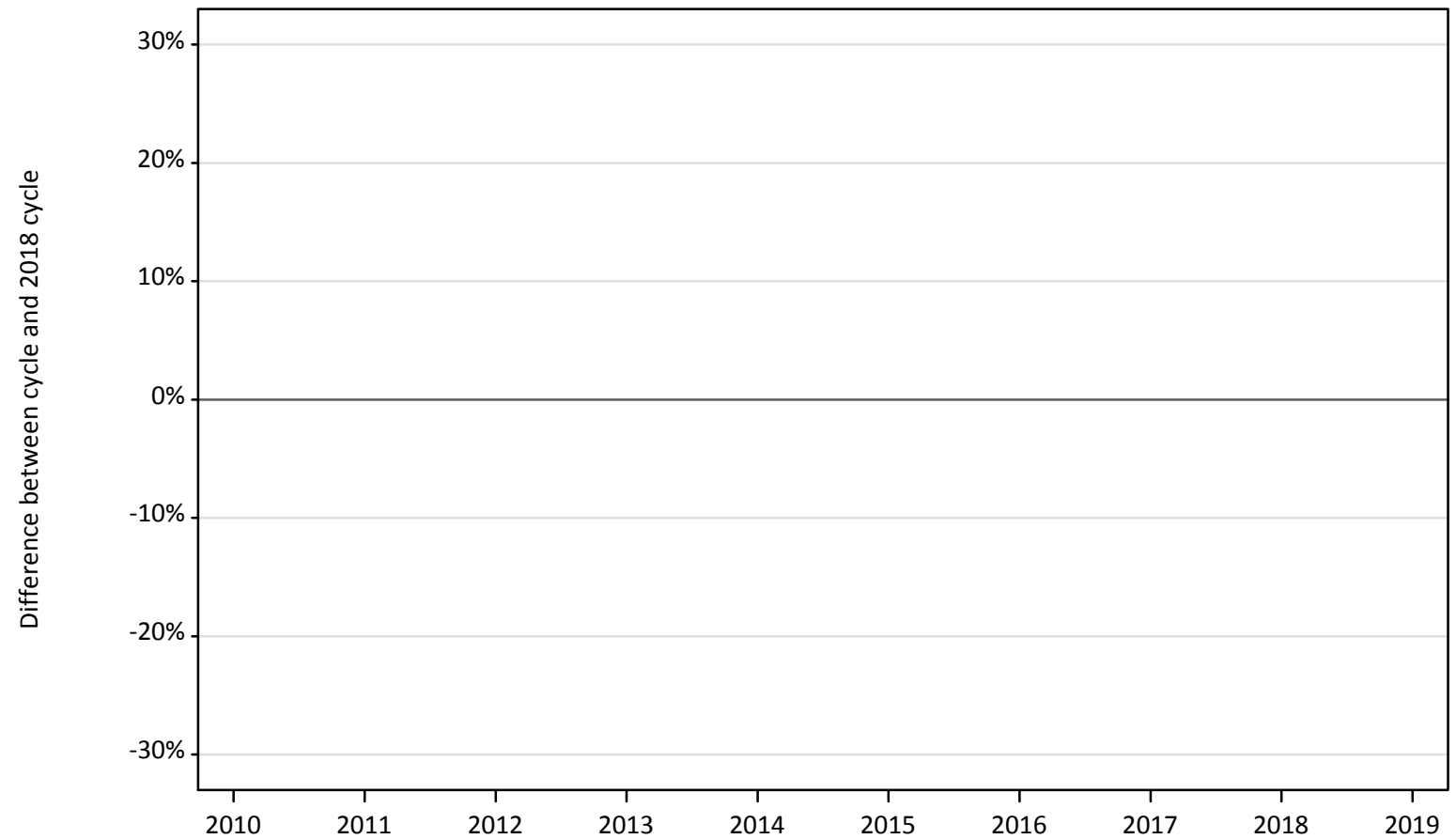
Applicant type	Status	2010	2011	2012	2013	2014	2015	2016	2017	2018	2019
Main scheme	Placed (Clearing)	-45%	-44%	-33%	-36%	-25%	-16%	-10%	-2%	0%	11%
	Placed (Firm)	-21%	-15%	-27%	-23%	-16%	-7%	2%	-2%	0%	-2%
	Placed (Insurance)	-25%	-14%	-32%	-24%	-15%	-4%	1%	1%	0%	2%
	Placed (Other)	-0%	0%	-26%	-17%	-18%	-16%	-1%	-4%	0%	3%

Note: The percentage change is not recorded in the above table for groups with fewer than 10 placed applicants in that cycle or in the 2018 cycle.

## A.9 Main scheme applicants placed through adjustment: 6 days after A level results day

Placed through adjustment: difference between cycle and 2018 cycle

Placed (Adjustment)



Note: The percentage change is not plotted in the above chart for groups with fewer than 30 placed applicants in any one cycle.

### A.10 Main scheme applicants placed through adjustment: 6 days after A level results day

Placed through adjustment: applicants at 6 days after A level results day

Applicant type	Status	2010	2011	2012	2013	2014	2015	2016	2017	2018	2019
Main scheme	Placed (Adjustment)	10	10	40	40	40	40	40	40	30	20

### A.11 Main scheme applicants placed through adjustment: 6 days after A level results day

Placed through adjustment: difference between cycle and 2018 cycle

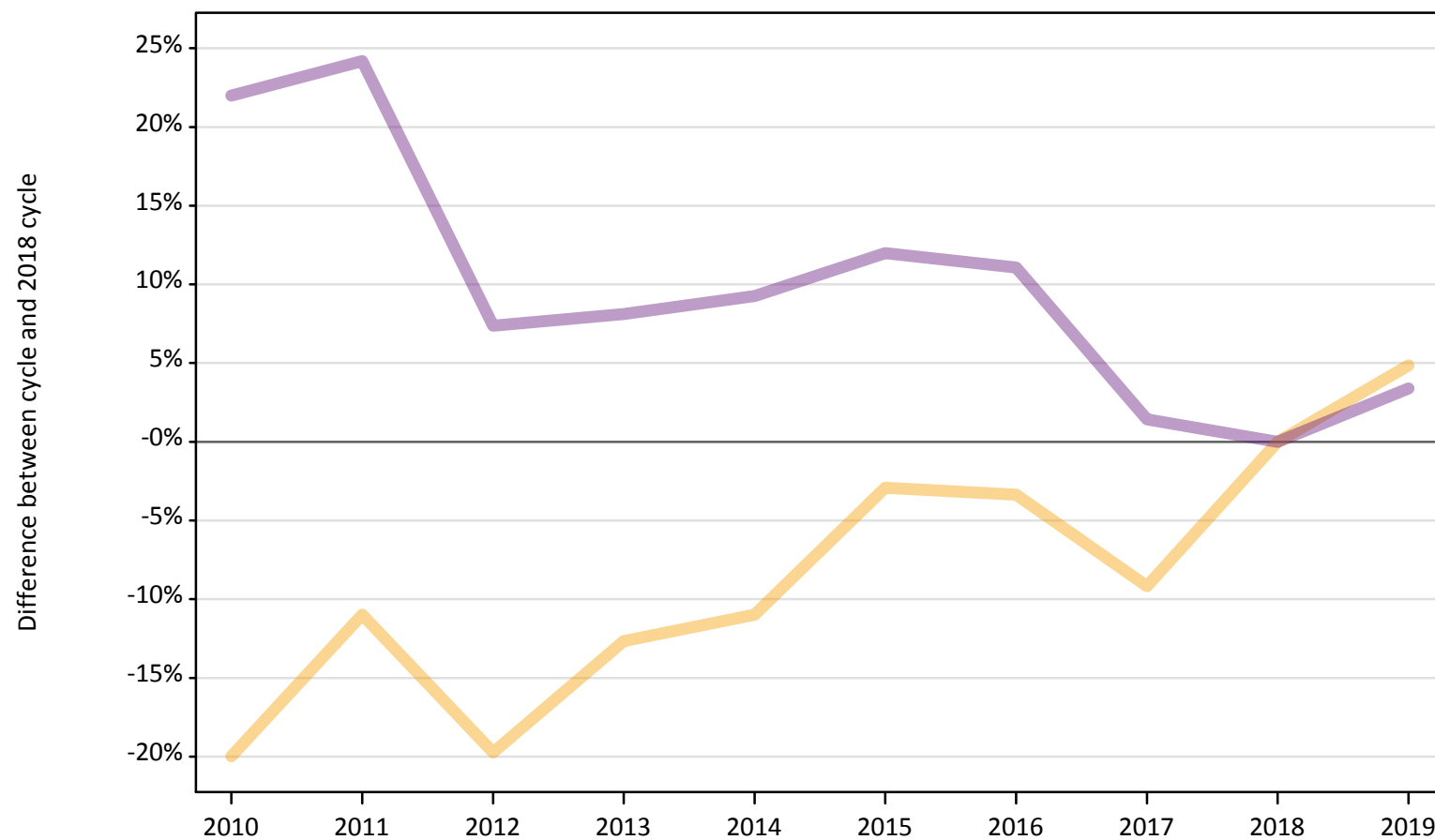
Applicant type	Status	2010	2011	2012	2013	2014	2015	2016	2017	2018	2019
Main scheme	Placed (Adjustment)	-52%	-56%	33%	30%	37%	44%	41%	56%	0%	-26%

Note: The percentage change is not recorded in the above table for groups with fewer than 10 placed applicants in that cycle or in the 2018 cycle.

### A.12 Main scheme applicants not currently placed from the EU - excluding UK: 6 days after A level results day

Applicants in unplaced states: difference between cycle and 2018 cycle

— Holding offer  
— Free to be placed in Clearing



Note: The percentage change is not plotted in the above chart for groups with fewer than 30 unplaced applicants in any one cycle.



**A.13 Main scheme applicants not currently placed from the EU - excluding UK: 6 days after A level results day**

Applicants in unplaced states: applicants at 6 days after A level results day

Applicant type	Status	2010	2011	2012	2013	2014	2015	2016	2017	2018	2019
Main scheme	Holding offer	5,990	6,660	6,010	6,540	6,660	7,270	7,240	6,800	7,490	7,850
	Free to be placed in Clearing	15,770	16,050	13,870	13,970	14,120	14,470	14,350	13,110	12,920	13,360

**A.14 Main scheme applicants not currently placed from the EU - excluding UK: 6 days after A level results day**

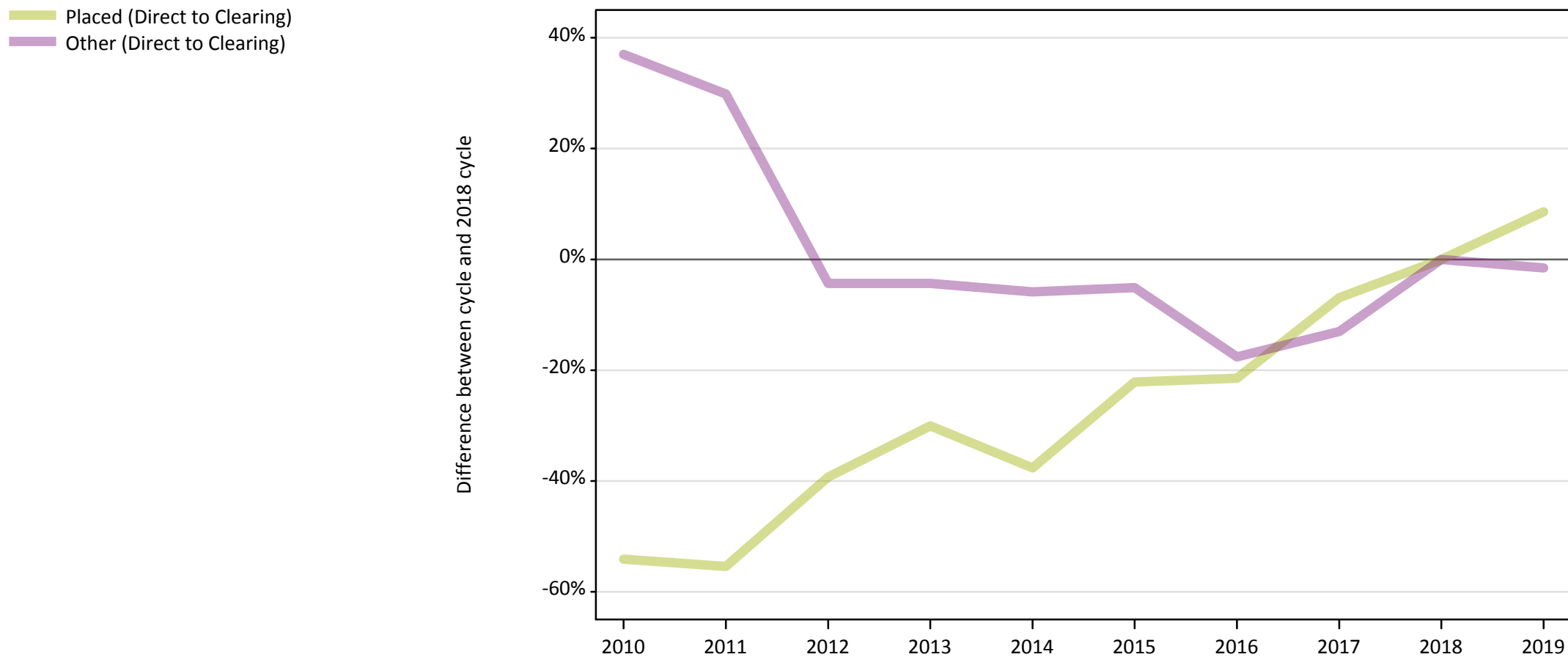
Applicants in unplaced states: difference between cycle and 2018 cycle

Applicant type	Status	2010	2011	2012	2013	2014	2015	2016	2017	2018	2019
Main scheme	Holding offer	-20%	-11%	-20%	-13%	-11%	-3%	-3%	-9%	0%	5%
	Free to be placed in Clearing	22%	24%	7%	8%	9%	12%	11%	1%	0%	3%

Note: The percentage change is not recorded in the above table for groups with fewer than 10 unplaced applicants in that cycle or in the 2018 cycle.

### A.15 Direct to Clearing applicants from the EU - excluding UK: 6 days after A level results day

Direct to Clearing: difference between cycle and 2018 cycle



Note: The percentage change is not plotted in the above chart for groups with fewer than 30 placed applicants in any one cycle.

### A.16 Direct to Clearing applicants from the EU - excluding UK: 6 days after A level results day

Direct to Clearing 6 days after A level results day

Applicant type	Status	2010	2011	2012	2013	2014	2015	2016	2017	2018	2019
Direct to Clearing	Placed (Direct to Clearing)	140	140	180	210	190	240	240	280	300	330
	Other (Direct to Clearing)	540	510	380	380	370	370	320	340	390	390

### A.17 Direct to Clearing applicants from the EU - excluding UK: 6 days after A level results day

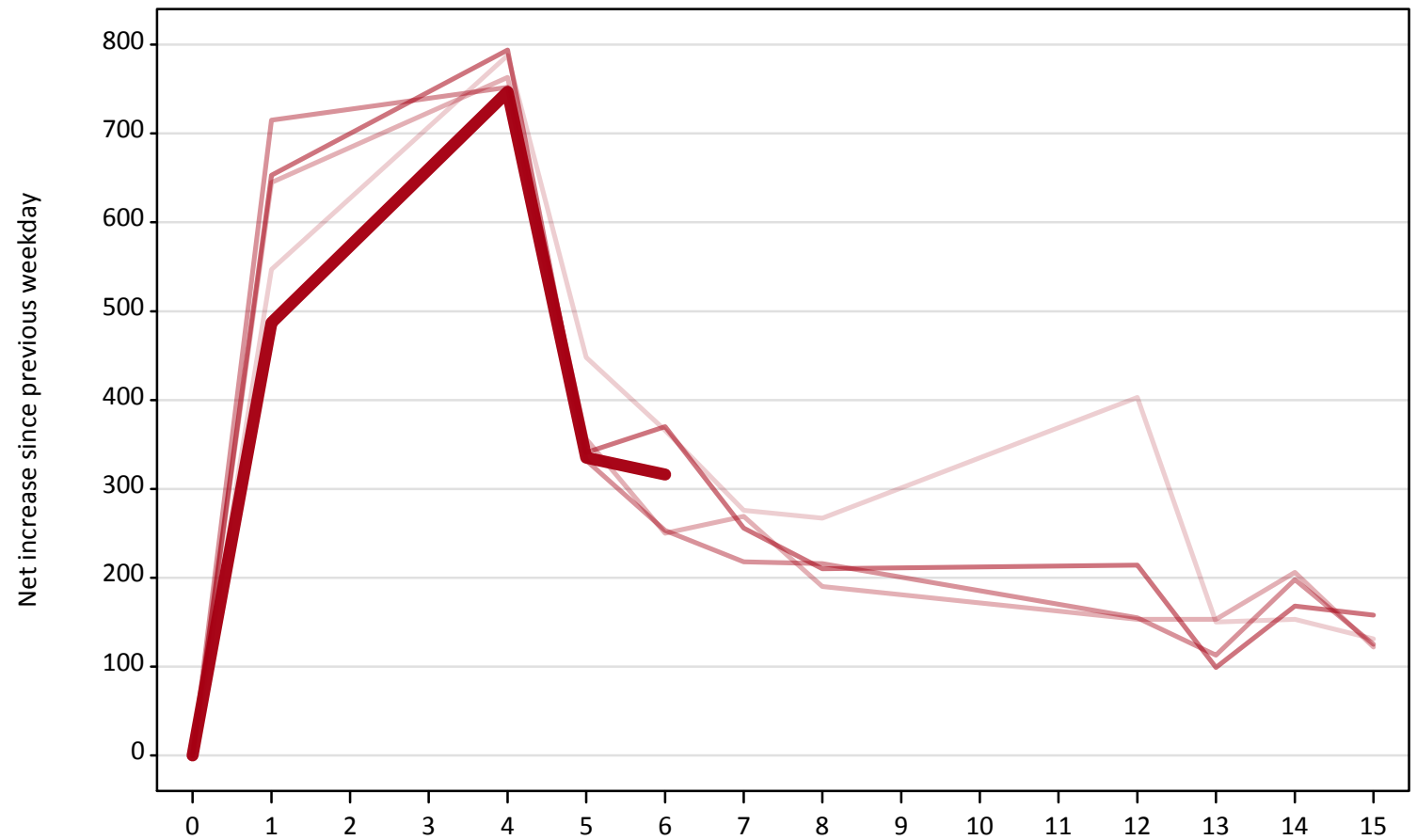
Direct to Clearing: difference between cycle and 2018 cycle

Applicant type	Status	2010	2011	2012	2013	2014	2015	2016	2017	2018	2019
Direct to Clearing	Placed (Direct to Clearing)	-54%	-55%	-39%	-30%	-38%	-22%	-21%	-7%	0%	9%
	Other (Direct to Clearing)	37%	30%	-4%	-4%	-6%	-5%	-18%	-13%	0%	-2%

Note: The percentage change is not recorded in the above table for groups with fewer than 10 placed applicants in that cycle or in the 2018 cycle.

**A.18 All Placed: Daily net change (from the EU - excluding UK)**  
Net increase since previous weekday (2019 cycle up to 6 days after A level results day)

- 2015
- 2016
- 2017
- 2018
- 2019**

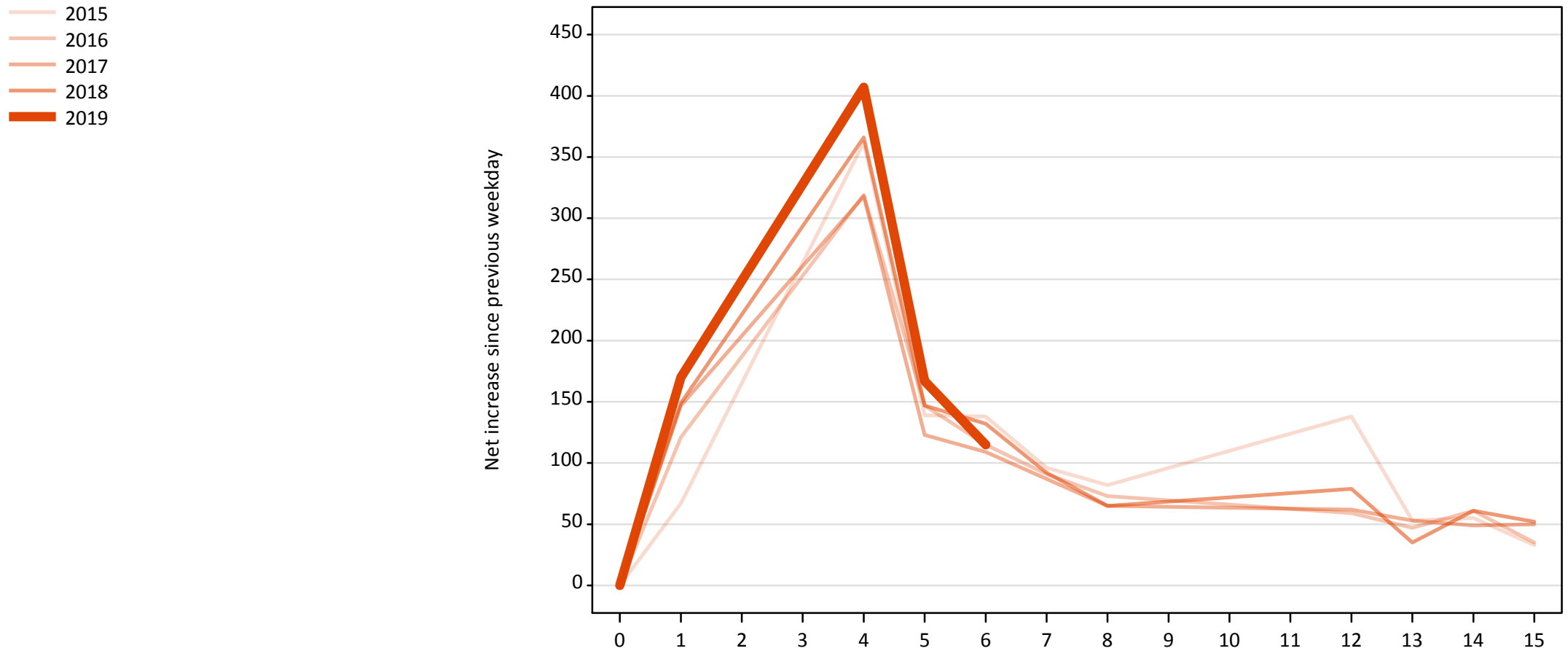


**A.19 All Placed: Daily net change (from the EU - excluding UK)**

Net increase since previous weekday (2019 cycle up to 6 days after A level results day)

Applicant status, days since A level results day		2015	2016	2017	2018	2019
All Placed	0	0	0	0	0	0
	1	550	650	720	650	490
	4	790	760	750	790	750
	5	450	360	330	340	340
	6	370	250	250	370	320
	7	280	270	220	260	
	8	270	190	220	210	
	12	400	150	160	210	
	13	150	150	110	100	
	14	150	210	200	170	
	15	130	120	130	160	

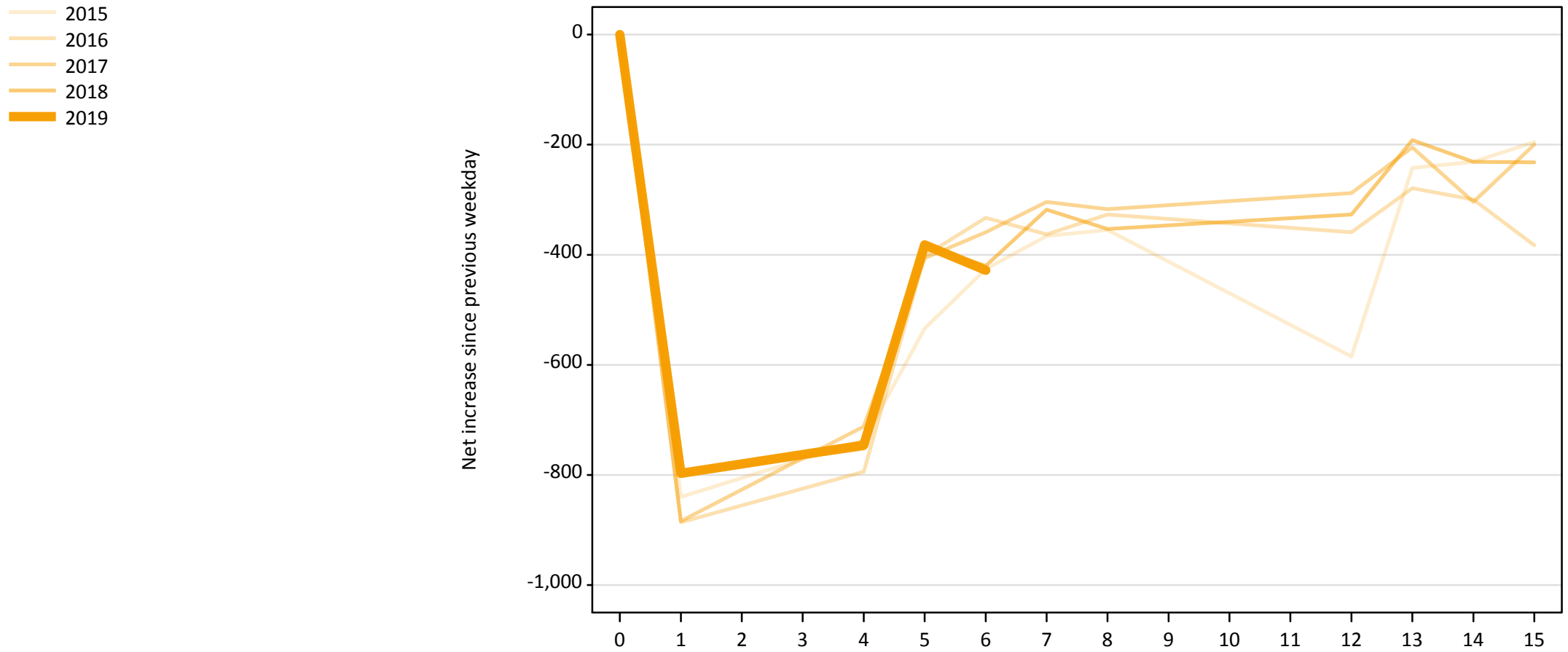
**A.20 Placed through Clearing only: Daily net change (from the EU - excluding UK)**  
Net increase since previous weekday (2019 cycle up to 6 days after A level results day)



**A.21 Placed through Clearing only: Daily net change (from the EU - excluding UK)**  
 Net increase since previous weekday (2019 cycle up to 6 days after A level results day)

Applicant status, days since A level results day		2015	2016	2017	2018	2019
Placed through Clearing only	0	0	0	0	0	0
	1	70	120	150	150	170
	4	360	320	320	370	410
	5	140	150	120	150	170
	6	140	120	110	130	120
	7	100	90	90	90	
	8	80	70	70	70	
	12	140	60	60	80	
	13	50	50	50	40	
	14	60	60	50	60	
	15	30	40	50	50	

**A.22 Holding Offer: Daily net change (from the EU - excluding UK)**  
Net increase since previous weekday (2019 cycle up to 6 days after A level results day)





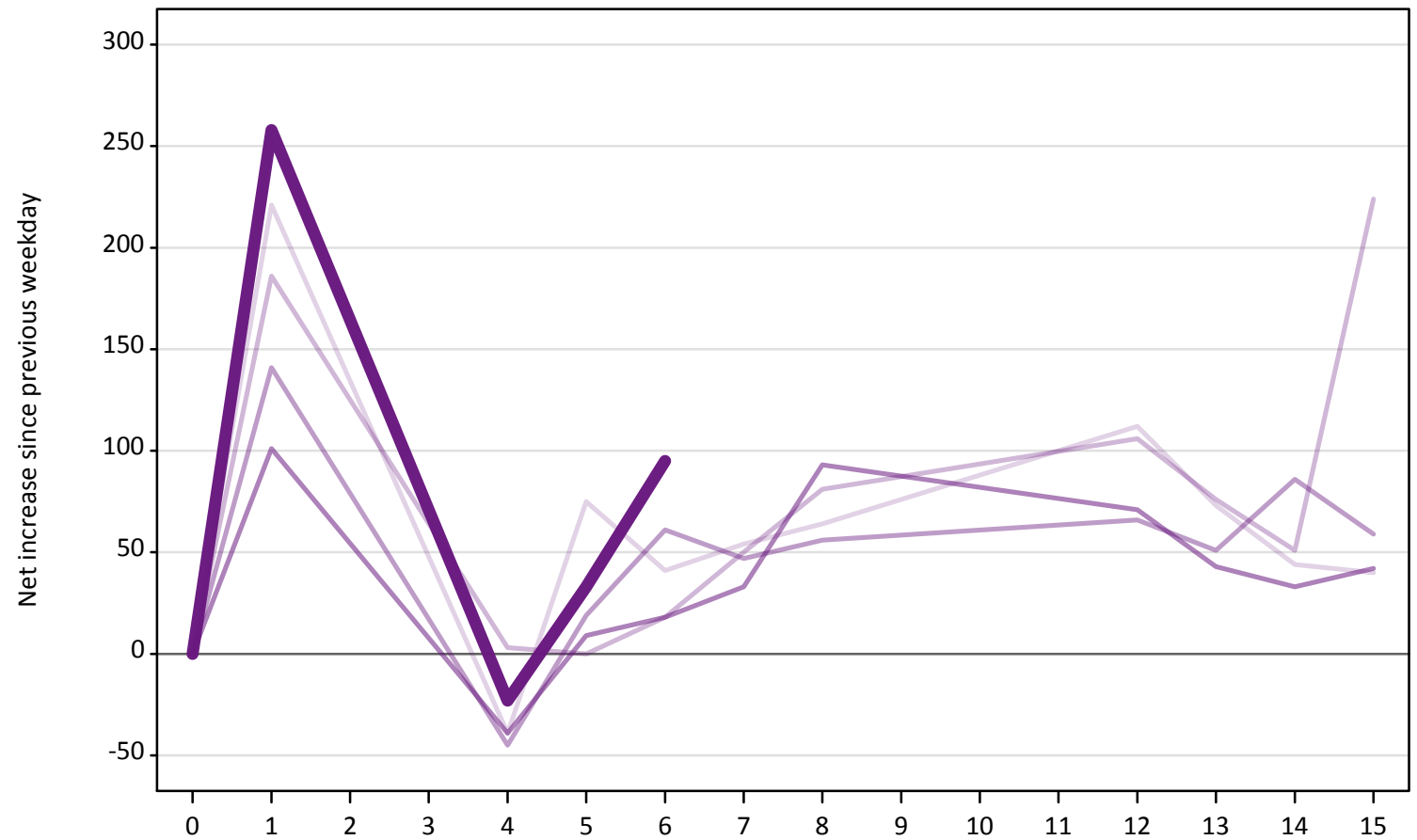
### A.23 Holding Offer: Daily net change (from the EU - excluding UK)

Net increase since previous weekday (2019 cycle up to 6 days after A level results day)

Applicant status, days since A level results day		2015	2016	2017	2018	2019
Holding Offer	0	0	0	0	0	0
	1	-840	-890	-880	-800	-800
	4	-740	-790	-710	-750	-750
	5	-530	-400	-410	-380	-380
	6	-430	-330	-360	-420	-430
	7	-370	-360	-300	-320	
	8	-360	-330	-320	-350	
	12	-590	-360	-290	-330	
	13	-240	-280	-210	-190	
	14	-230	-300	-300	-230	
	15	-200	-380	-200	-230	

**A.24 Free to be placed in Clearing: Daily net change (from the EU - excluding UK)**  
Net increase since previous weekday (2019 cycle up to 6 days after A level results day)

- 2015
- 2016
- 2017
- 2018
- 2019



**A.25 Free to be placed in Clearing: Daily net change (from the EU - excluding UK)**  
 Net increase since previous weekday (2019 cycle up to 6 days after A level results day)

Applicant status, days since A level results day		2015	2016	2017	2018	2019
Free to be placed in Clearing	0	0	0	0	0	0
	1	220	190	140	100	260
	4	-40	0	-50	-40	-20
	5	80	0	20	10	30
	6	40	20	60	20	100
	7	50	50	50	30	
	8	60	80	60	90	
	12	110	110	70	70	
	13	70	80	50	40	
	14	40	50	90	30	
	15	40	220	60	40	