

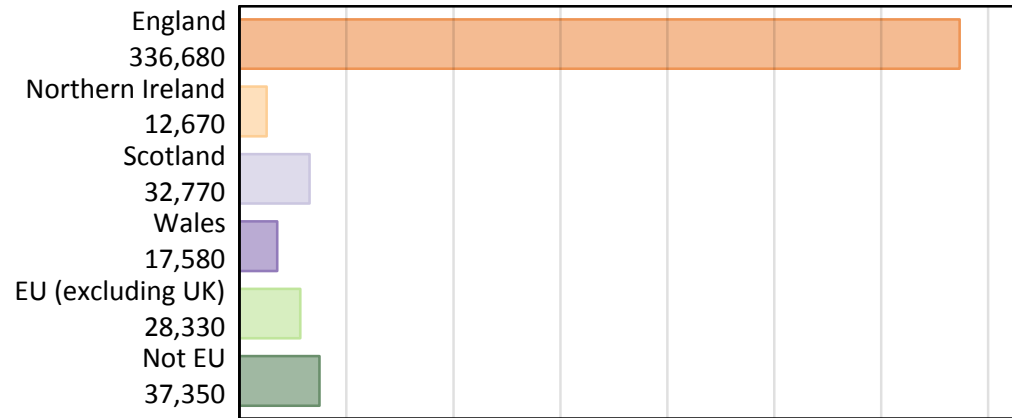
Daily Clearing Analysis: Country

Analysis at 00:05 on Wednesday 21 August 2019 (6 days after A level results day)

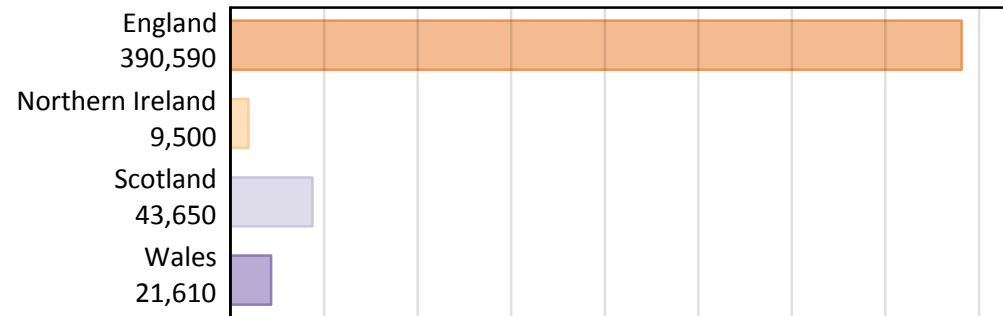
B.1 Placed applicants by country of provider and domicile, 2019 cycle

Domicile of applicant	Country of provider				
	England	Northern Ireland	Scotland	Wales	UK
England	322,510	280	4,310	9,570	336,680
Northern Ireland	3,120	8,560	870	120	12,670
Scotland	1,460	20	31,260	30	32,770
Wales	7,620	10	130	9,820	17,580
EU (excluding UK)	23,160	400	3,810	960	28,330
Not EU	32,730	230	3,280	1,100	37,350
All	390,590	9,500	43,650	21,610	465,360

B.2 Placed applicants by domicile group



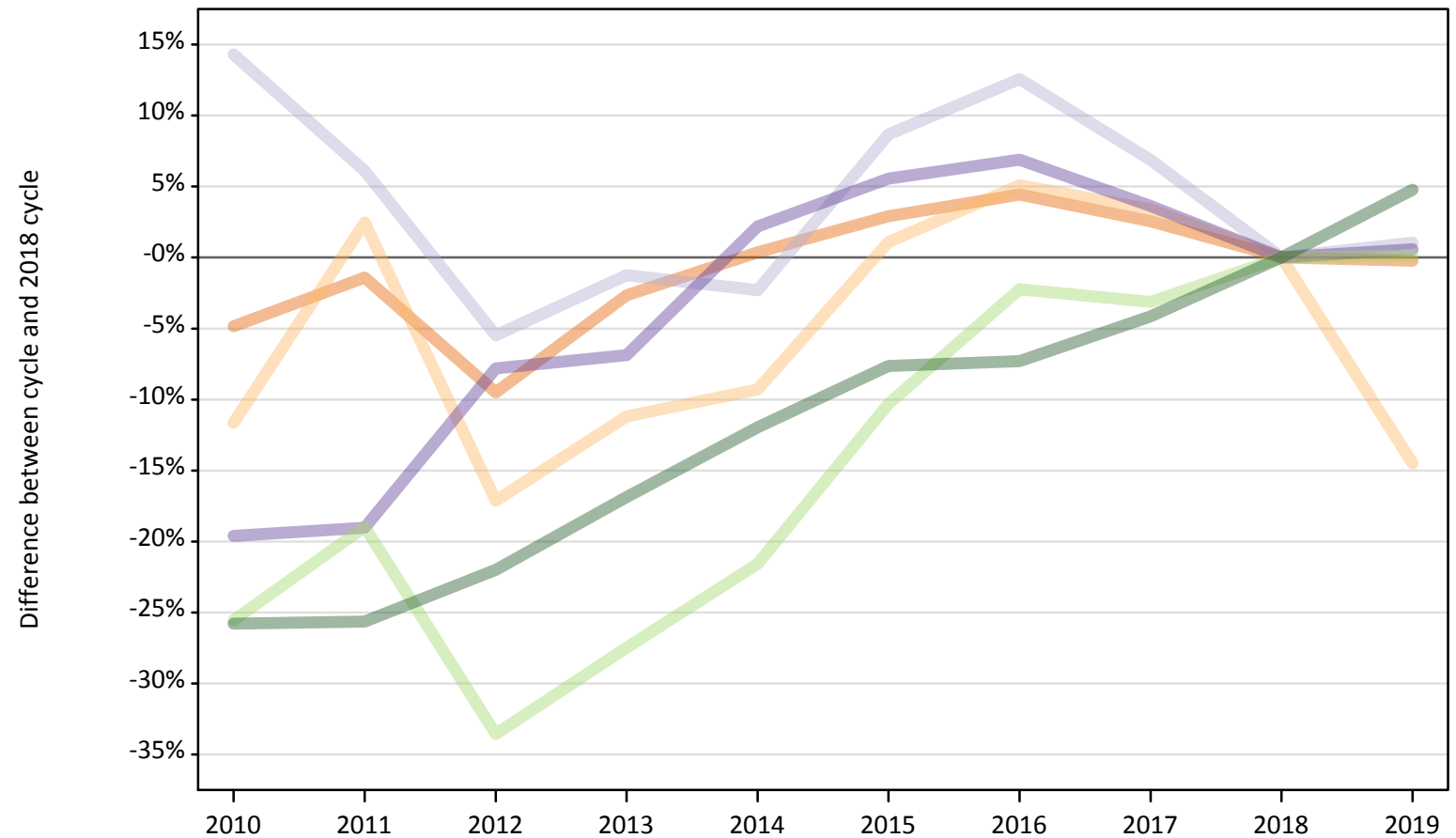
B.3 Placed applicants by country of provider



B.4 Placed applicants at 6 days after A level results day: providers in England

Selected applicant domiciles: difference between cycle and 2018 cycle (at 6 days after A level results day)

- England
- Northern Ireland
- Scotland
- Wales
- EU (excluding UK)
- Not EU



Note: The percentage change is not plotted in the above chart for groups with fewer than 30 placed applicants in any one cycle.

B.5 Placed applicants at 6 days after A level results day: providers in England

Placed applicants by domicile (at 6 days after A level results day)

Domicile of applicant	2010	2011	2012	2013	2014	2015	2016	2017	2018	2019
England	307,580	318,650	292,540	314,640	324,420	332,610	337,540	331,480	323,220	322,510
Northern Ireland	3,230	3,740	3,030	3,240	3,310	3,690	3,840	3,780	3,650	3,120
Scotland	1,650	1,530	1,360	1,420	1,410	1,570	1,620	1,540	1,440	1,460
Wales	6,090	6,130	6,980	7,050	7,740	7,990	8,100	7,850	7,570	7,620
EU (excluding UK)	17,220	18,740	15,370	16,770	18,140	20,740	22,610	22,400	23,120	23,160
Not EU	23,180	23,230	24,370	25,970	27,500	28,860	28,960	29,950	31,240	32,730

B.6 Placed applicants at 6 days after A level results day: providers in England

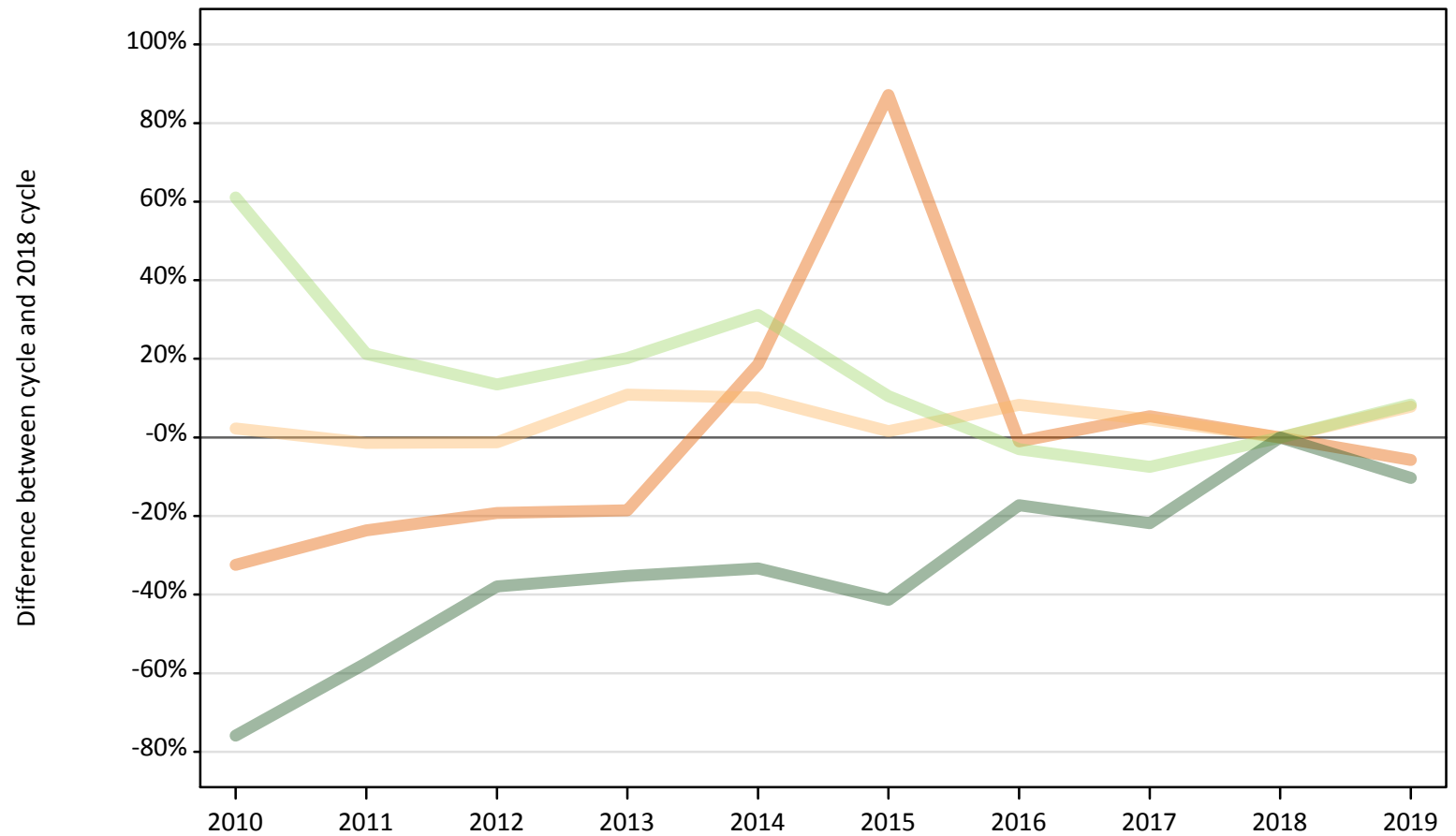
Selected applicant domiciles: difference between cycle and 2018 cycle (at 6 days after A level results day)

Domicile of applicant	2010	2011	2012	2013	2014	2015	2016	2017	2018	2019
England	-5%	-1%	-9%	-3%	0%	3%	4%	3%	0%	-0%
Northern Ireland	-12%	2%	-17%	-11%	-9%	1%	5%	3%	0%	-14%
Scotland	14%	6%	-5%	-1%	-2%	9%	13%	7%	0%	1%
Wales	-20%	-19%	-8%	-7%	2%	6%	7%	4%	0%	1%
EU (excluding UK)	-26%	-19%	-34%	-27%	-22%	-10%	-2%	-3%	0%	0%
Not EU	-26%	-26%	-22%	-17%	-12%	-8%	-7%	-4%	0%	5%

Note: The percentage change is not recorded in the above table for groups with fewer than 10 placed applicants in that cycle or in the 2018 cycle.

B.7 Placed applicants at 6 days after A level results day: providers in Northern Ireland
Selected applicant domiciles: difference between cycle and 2018 cycle (at 6 days after A level results day)

- England
- Northern Ireland
- Scotland
- Wales
- EU (excluding UK)
- Not EU



Note: The percentage change is not plotted in the above chart for groups with fewer than 30 placed applicants in any one cycle.

B.8 Placed applicants at 6 days after A level results day: providers in Northern Ireland

Placed applicants by domicile (at 6 days after A level results day)

Domicile of applicant	2010	2011	2012	2013	2014	2015	2016	2017	2018	2019
England	200	230	240	240	350	550	290	310	300	280
Northern Ireland	8,110	7,820	7,840	8,800	8,740	8,060	8,590	8,300	7,940	8,560
Scotland	20	20	30	10	20	20	20	30	30	20
Wales	10	10	0	0	10	10	10	10	10	10
EU (excluding UK)	600	450	420	450	490	410	360	340	370	400
Not EU	60	110	160	170	170	150	220	200	260	230

B.9 Placed applicants at 6 days after A level results day: providers in Northern Ireland

Selected applicant domiciles: difference between cycle and 2018 cycle (at 6 days after A level results day)

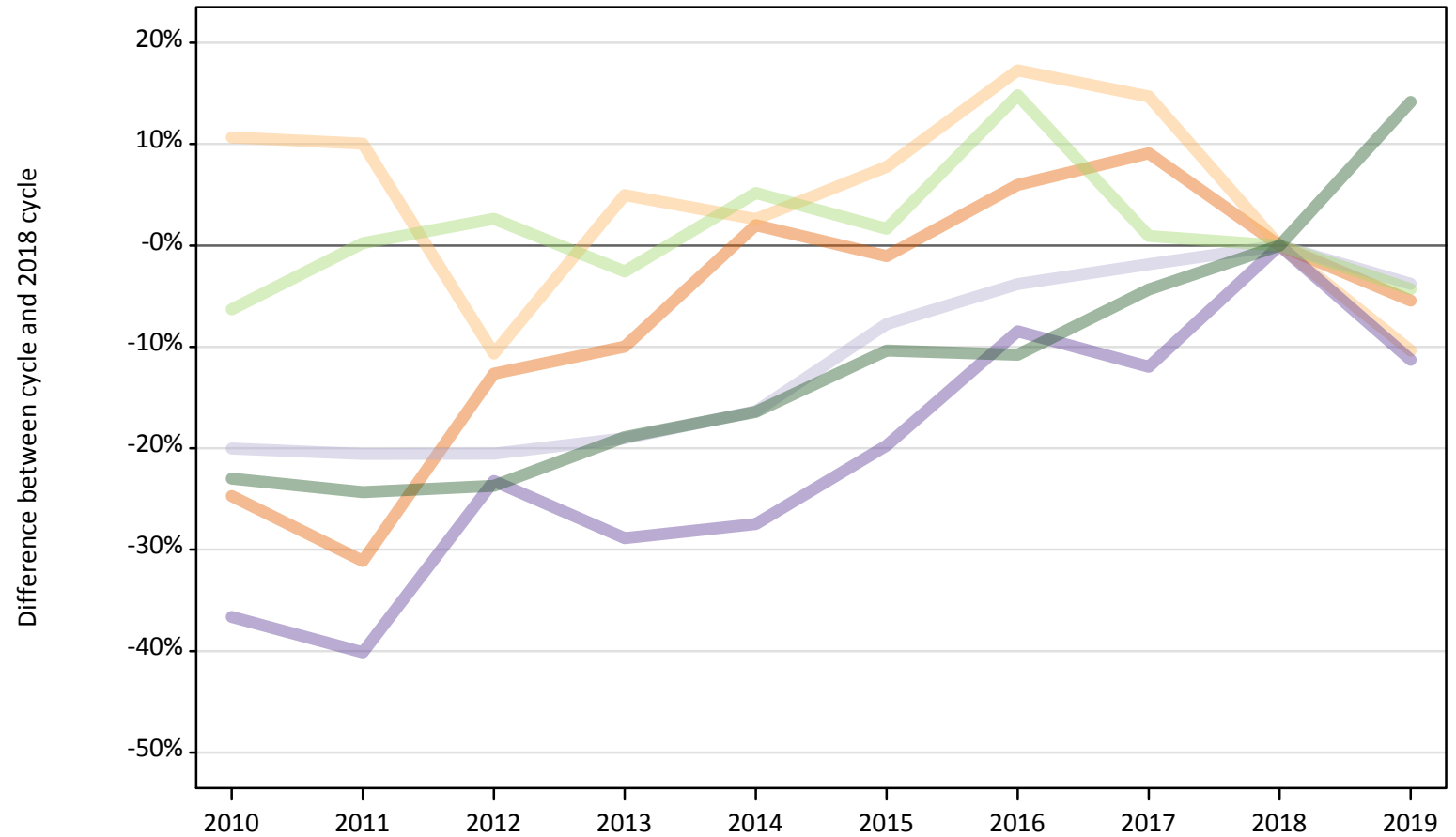
Domicile of applicant	2010	2011	2012	2013	2014	2015	2016	2017	2018	2019
England	-32%	-24%	-19%	-19%	19%	87%	-1%	5%	0%	-6%
Northern Ireland	2%	-1%	-1%	11%	10%	2%	8%	5%	0%	8%
Scotland	-12%	-35%	4%	-54%	-35%	-27%	-38%	15%	0%	-31%
Wales						10%	0%	40%	0%	20%
EU (excluding UK)	61%	21%	13%	20%	31%	10%	-3%	-8%	0%	8%
Not EU	-76%	-57%	-38%	-35%	-33%	-41%	-17%	-22%	0%	-10%

Note: The percentage change is not recorded in the above table for groups with fewer than 10 placed applicants in that cycle or in the 2018 cycle.

B.10 Placed applicants at 6 days after A level results day: providers in Scotland

Selected applicant domiciles: difference between cycle and 2018 cycle (at 6 days after A level results day)

- England
- Northern Ireland
- Scotland
- Wales
- EU (excluding UK)
- Not EU



Note: The percentage change is not plotted in the above chart for groups with fewer than 30 placed applicants in any one cycle.

B.11 Placed applicants at 6 days after A level results day: providers in Scotland

Placed applicants by domicile (at 6 days after A level results day)

Domicile of applicant	2010	2011	2012	2013	2014	2015	2016	2017	2018	2019
England	3,430	3,140	3,980	4,100	4,650	4,510	4,830	4,970	4,560	4,310
Northern Ireland	1,070	1,060	860	1,010	990	1,040	1,130	1,110	970	870
Scotland	25,980	25,810	25,810	26,310	27,180	29,970	31,250	31,890	32,480	31,260
Wales	90	90	110	100	100	110	130	130	140	130
EU (excluding UK)	3,730	3,990	4,090	3,880	4,190	4,050	4,570	4,020	3,980	3,810
Not EU	2,210	2,180	2,190	2,330	2,400	2,580	2,570	2,750	2,880	3,280

B.12 Placed applicants at 6 days after A level results day: providers in Scotland

Selected applicant domiciles: difference between cycle and 2018 cycle (at 6 days after A level results day)

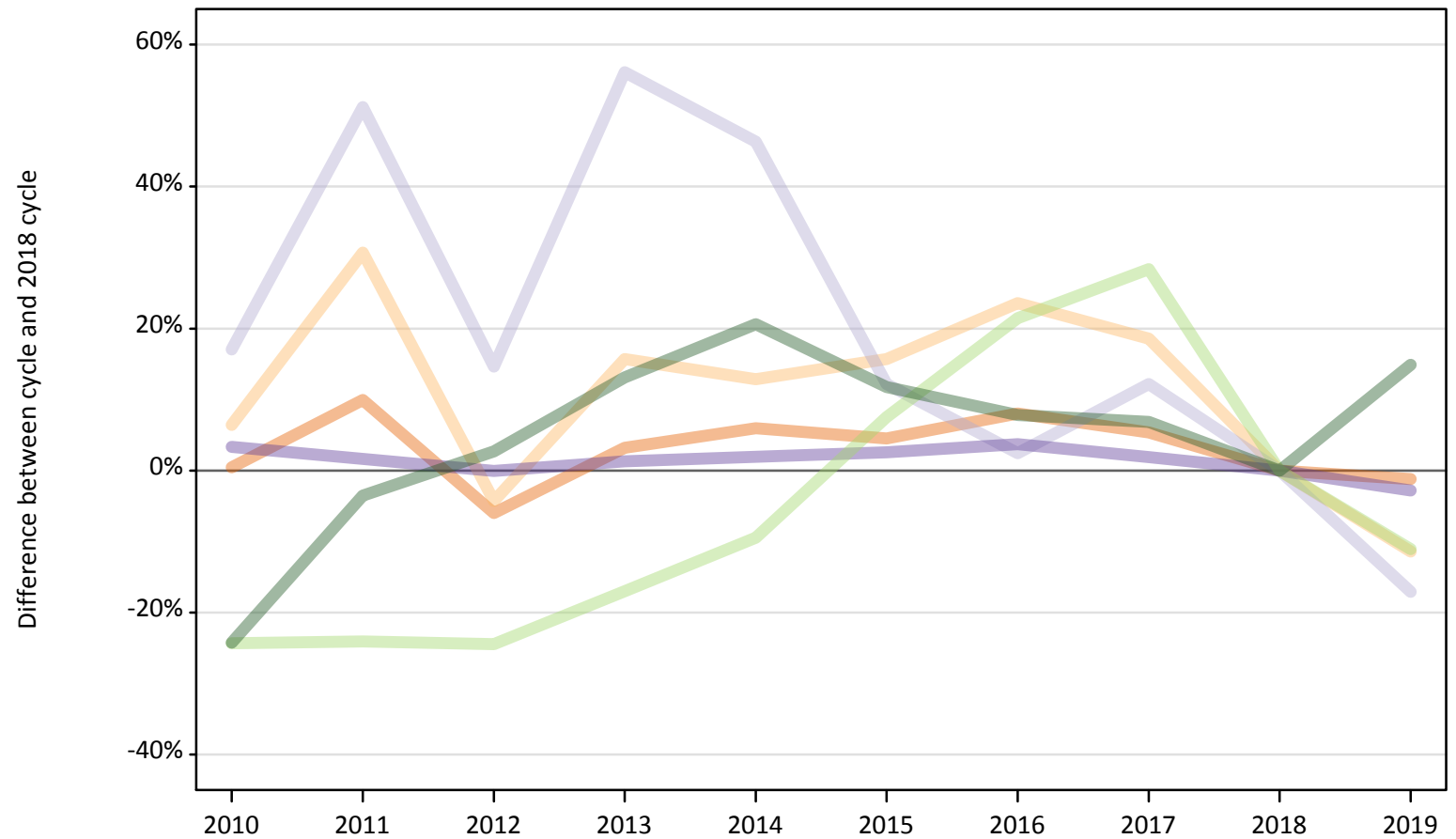
Domicile of applicant	2010	2011	2012	2013	2014	2015	2016	2017	2018	2019
England	-25%	-31%	-13%	-10%	2%	-1%	6%	9%	0%	-5%
Northern Ireland	11%	10%	-11%	5%	3%	8%	17%	15%	0%	-10%
Scotland	-20%	-21%	-21%	-19%	-16%	-8%	-4%	-2%	0%	-4%
Wales	-37%	-40%	-23%	-29%	-27%	-20%	-8%	-12%	0%	-11%
EU (excluding UK)	-6%	0%	3%	-3%	5%	2%	15%	1%	0%	-4%
Not EU	-23%	-24%	-24%	-19%	-16%	-10%	-11%	-4%	0%	14%

Note: The percentage change is not recorded in the above table for groups with fewer than 10 placed applicants in that cycle or in the 2018 cycle.

B.13 Placed applicants at 6 days after A level results day: providers in Wales

Selected applicant domiciles: difference between cycle and 2018 cycle (at 6 days after A level results day)

- England
- Northern Ireland
- Scotland
- Wales
- EU (excluding UK)
- Not EU



Note: The percentage change is not plotted in the above chart for groups with fewer than 30 placed applicants in any one cycle.

B.14 Placed applicants at 6 days after A level results day: providers in Wales

Placed applicants by domicile (at 6 days after A level results day)

Domicile of applicant	2010	2011	2012	2013	2014	2015	2016	2017	2018	2019
England	9,730	10,650	9,110	10,000	10,270	10,130	10,470	10,210	9,690	9,570
Northern Ireland	150	180	130	160	160	160	170	170	140	120
Scotland	50	60	50	60	60	50	40	50	40	30
Wales	10,440	10,270	10,100	10,240	10,300	10,370	10,480	10,300	10,110	9,820
EU (excluding UK)	810	820	810	890	970	1,160	1,310	1,380	1,080	960
Not EU	730	930	990	1,090	1,160	1,070	1,040	1,030	960	1,100

B.15 Placed applicants at 6 days after A level results day: providers in Wales

Selected applicant domiciles: difference between cycle and 2018 cycle (at 6 days after A level results day)

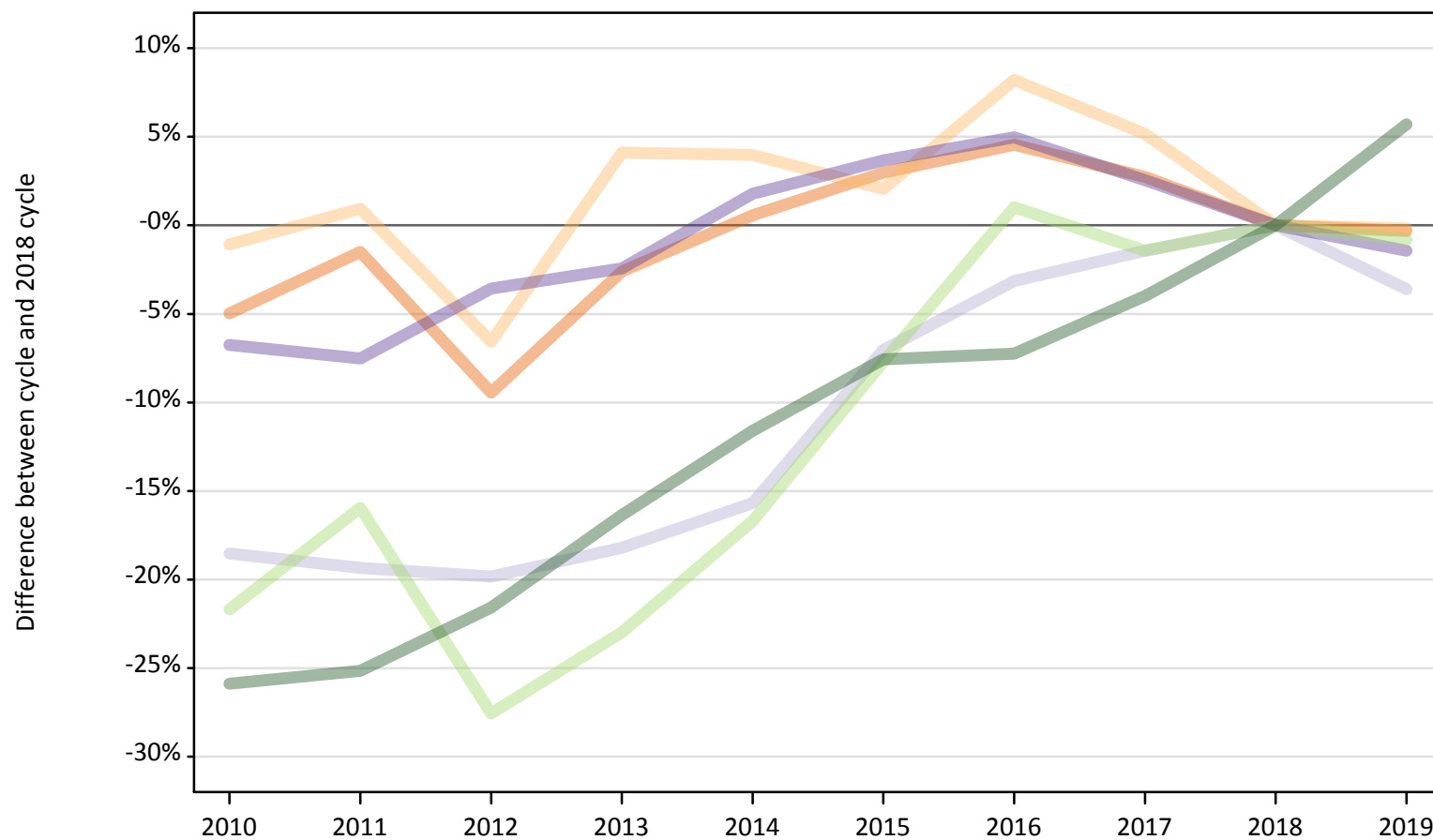
Domicile of applicant	2010	2011	2012	2013	2014	2015	2016	2017	2018	2019
England	0%	10%	-6%	3%	6%	5%	8%	5%	0%	-1%
Northern Ireland	6%	31%	-4%	16%	13%	16%	24%	19%	0%	-11%
Scotland	17%	51%	15%	56%	46%	12%	2%	12%	0%	-17%
Wales	3%	2%	-0%	1%	2%	3%	4%	2%	0%	-3%
EU (excluding UK)	-24%	-24%	-24%	-17%	-9%	8%	21%	28%	0%	-11%
Not EU	-24%	-4%	3%	13%	21%	12%	8%	7%	0%	15%

Note: The percentage change is not recorded in the above table for groups with fewer than 10 placed applicants in that cycle or in the 2018 cycle.

B.16 Placed applicants at 6 days after A level results day: providers in the UK

Selected applicant domiciles: difference between cycle and 2018 cycle (at 6 days after A level results day)

- England
- Northern Ireland
- Scotland
- Wales
- EU (excluding UK)
- Not EU



Note: The percentage change is not plotted in the above chart for groups with fewer than 30 placed applicants in any one cycle.

B.17 Placed applicants at 6 days after A level results day: providers in the UK

Placed applicants by domicile (at 6 days after A level results day)

Domicile of applicant	2010	2011	2012	2013	2014	2015	2016	2017	2018	2019
England	320,950	332,670	305,870	328,990	339,690	347,800	353,130	346,970	337,760	336,680
Northern Ireland	12,560	12,810	11,860	13,210	13,200	12,950	13,730	13,350	12,690	12,670
Scotland	27,690	27,410	27,250	27,800	28,660	31,600	32,920	33,500	33,990	32,770
Wales	16,630	16,490	17,200	17,400	18,150	18,490	18,720	18,290	17,830	17,580
EU (excluding UK)	22,360	24,000	20,690	21,990	23,790	26,360	28,850	28,140	28,550	28,330
Not EU	26,190	26,440	27,710	29,550	31,240	32,660	32,770	33,930	35,340	37,350

B.18 Placed applicants at 6 days after A level results day: providers in the UK

Selected applicant domiciles: difference between cycle and 2018 cycle (at 6 days after A level results day)

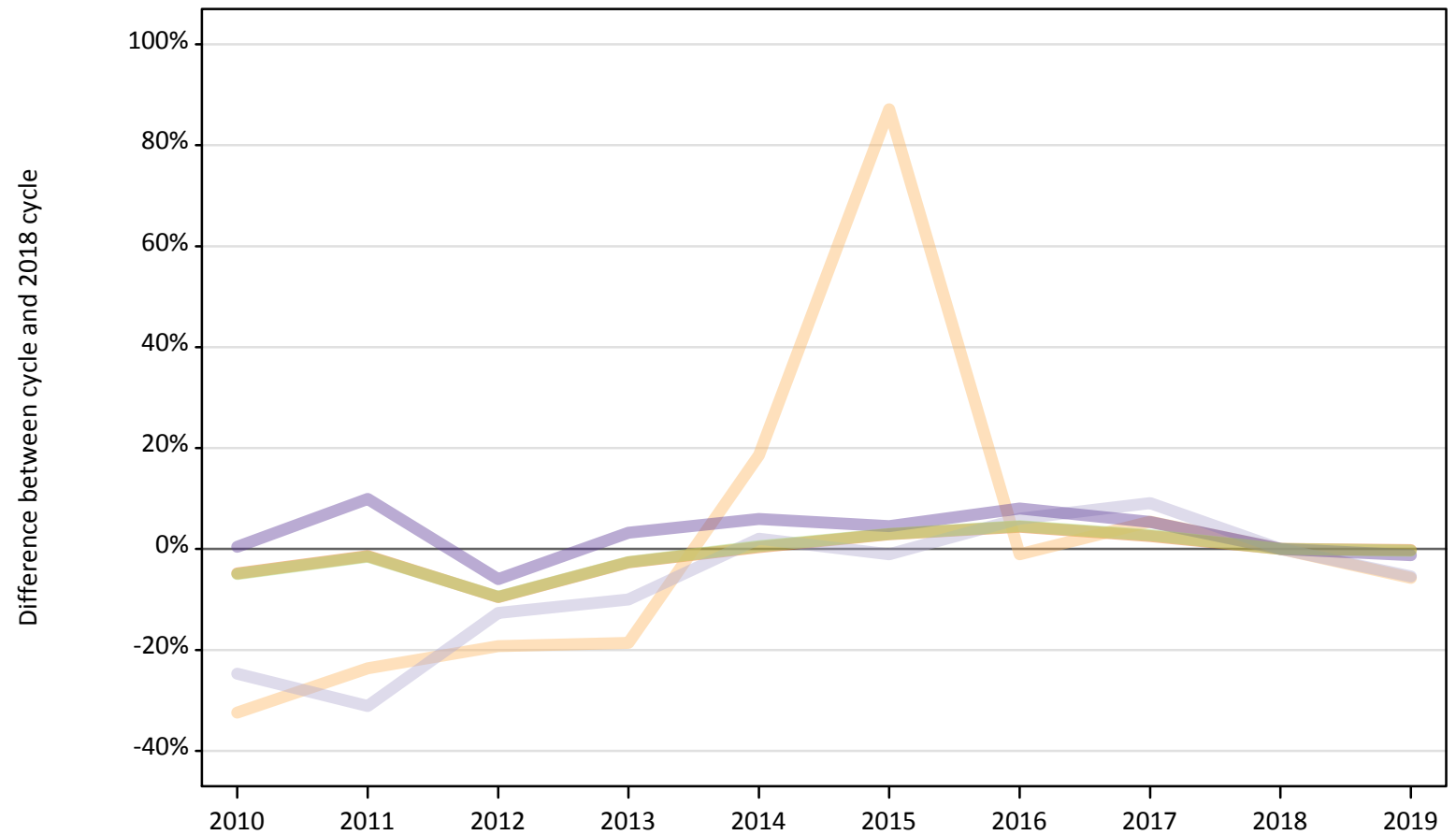
Domicile of applicant	2010	2011	2012	2013	2014	2015	2016	2017	2018	2019
England	-5%	-2%	-9%	-3%	1%	3%	5%	3%	0%	-0%
Northern Ireland	-1%	1%	-7%	4%	4%	2%	8%	5%	0%	-0%
Scotland	-19%	-19%	-20%	-18%	-16%	-7%	-3%	-1%	0%	-4%
Wales	-7%	-8%	-4%	-2%	2%	4%	5%	3%	0%	-1%
EU (excluding UK)	-22%	-16%	-28%	-23%	-17%	-8%	1%	-1%	0%	-1%
Not EU	-26%	-25%	-22%	-16%	-12%	-8%	-7%	-4%	0%	6%

Note: The percentage change is not recorded in the above table for groups with fewer than 10 placed applicants in that cycle or in the 2018 cycle.

B.19 Placed applicants at 6 days after A level results day: domiciled in England

Selected provider countries: difference between cycle and 2018 cycle (at 6 days after A level results day)

- England
- Northern Ireland
- Scotland
- Wales
- UK



Note: The percentage change is not plotted in the above chart for groups with fewer than 30 placed applicants in any one cycle.

B.20 Placed applicants at 6 days after A level results day: domiciled in England

Placed applicants by provider country (at 6 days after A level results day)

Country of provider	2010	2011	2012	2013	2014	2015	2016	2017	2018	2019
England	307,580	318,650	292,540	314,640	324,420	332,610	337,540	331,480	323,220	322,510
Northern Ireland	200	230	240	240	350	550	290	310	300	280
Scotland	3,430	3,140	3,980	4,100	4,650	4,510	4,830	4,970	4,560	4,310
Wales	9,730	10,650	9,110	10,000	10,270	10,130	10,470	10,210	9,690	9,570
UK	320,950	332,670	305,870	328,990	339,690	347,800	353,130	346,970	337,760	336,680

B.21 Placed applicants at 6 days after A level results day: domiciled in England

Selected provider countries: difference between cycle and 2018 cycle (at 6 days after A level results day)

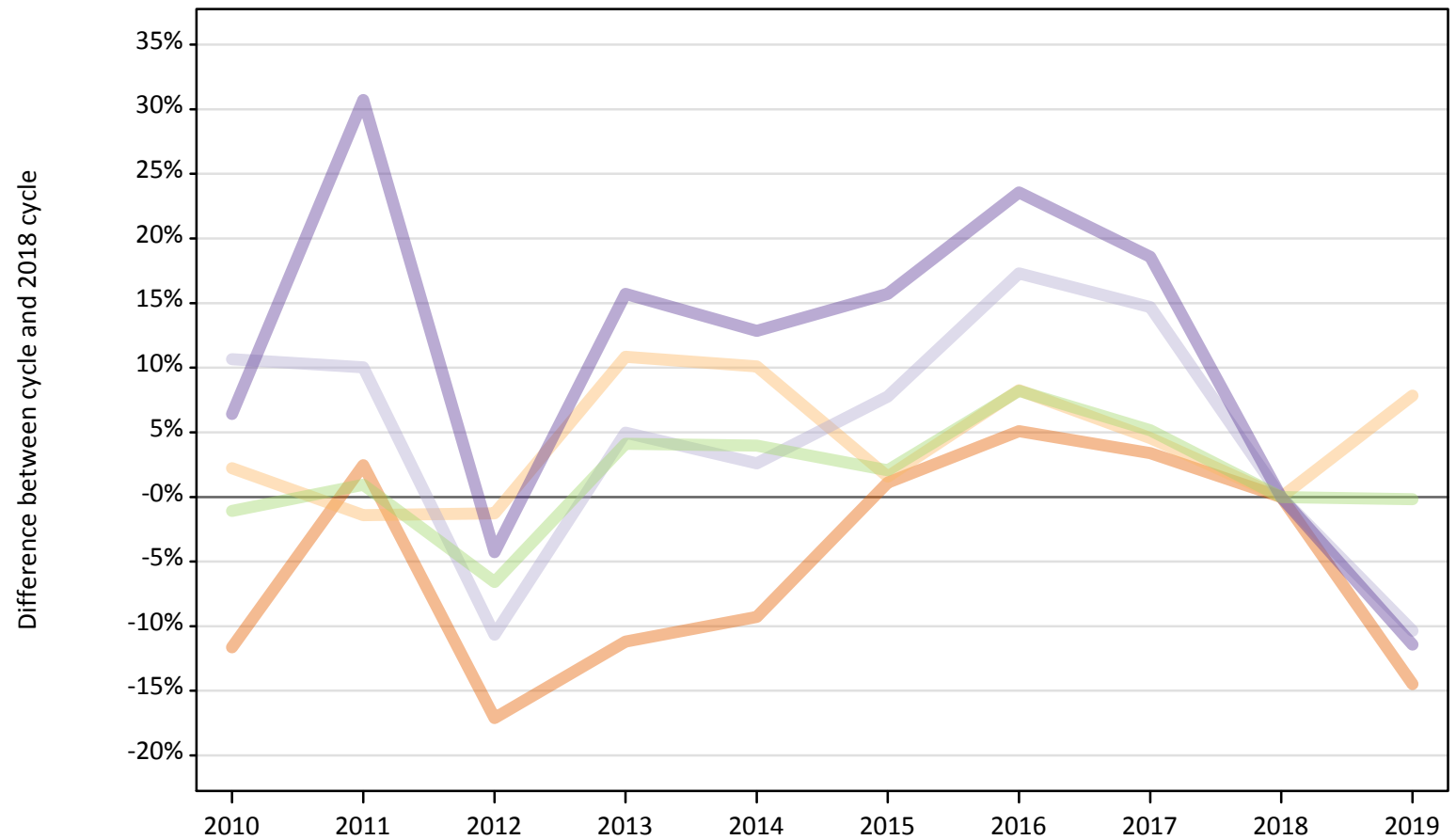
Country of provider	2010	2011	2012	2013	2014	2015	2016	2017	2018	2019
England	-5%	-1%	-9%	-3%	0%	3%	4%	3%	0%	-0%
Northern Ireland	-32%	-24%	-19%	-19%	19%	87%	-1%	5%	0%	-6%
Scotland	-25%	-31%	-13%	-10%	2%	-1%	6%	9%	0%	-5%
Wales	0%	10%	-6%	3%	6%	5%	8%	5%	0%	-1%
UK	-5%	-2%	-9%	-3%	1%	3%	5%	3%	0%	-0%

Note: The percentage change is not recorded in the above table for groups with fewer than 10 placed applicants in that cycle or in the 2018 cycle.

B.22 Placed applicants at 6 days after A level results day: domiciled in Northern Ireland

Selected provider countries: difference between cycle and 2018 cycle (at 6 days after A level results day)

- England
- Northern Ireland
- Scotland
- Wales
- UK



Note: The percentage change is not plotted in the above chart for groups with fewer than 30 placed applicants in any one cycle.

B.23 Placed applicants at 6 days after A level results day: domiciled in Northern Ireland

Placed applicants by provider country (at 6 days after A level results day)

Country of provider	2010	2011	2012	2013	2014	2015	2016	2017	2018	2019
England	3,230	3,740	3,030	3,240	3,310	3,690	3,840	3,780	3,650	3,120
Northern Ireland	8,110	7,820	7,840	8,800	8,740	8,060	8,590	8,300	7,940	8,560
Scotland	1,070	1,060	860	1,010	990	1,040	1,130	1,110	970	870
Wales	150	180	130	160	160	160	170	170	140	120
UK	12,560	12,810	11,860	13,210	13,200	12,950	13,730	13,350	12,690	12,670

B.24 Placed applicants at 6 days after A level results day: domiciled in Northern Ireland

Selected provider countries: difference between cycle and 2018 cycle (at 6 days after A level results day)

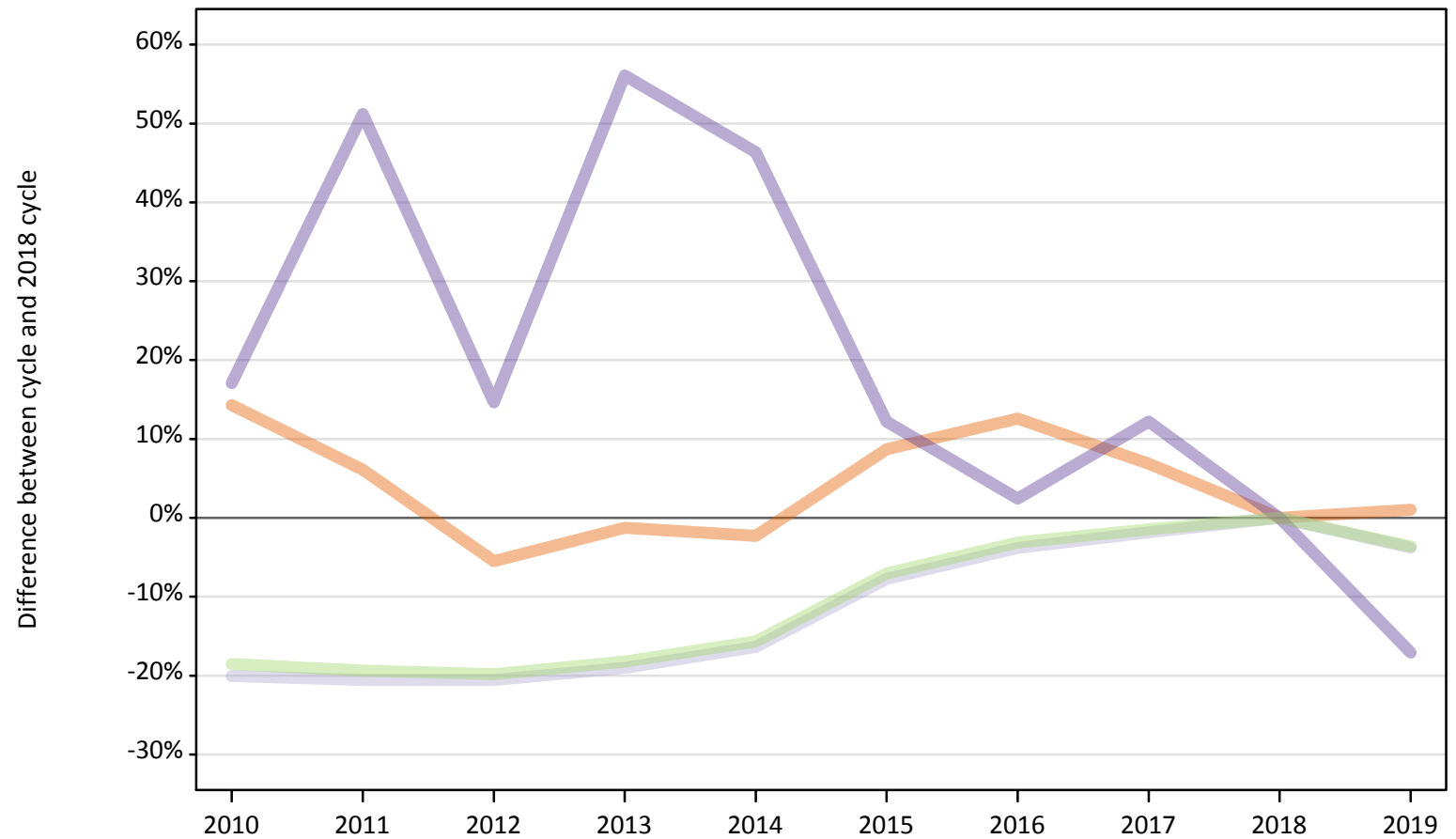
Country of provider	2010	2011	2012	2013	2014	2015	2016	2017	2018	2019
England	-12%	2%	-17%	-11%	-9%	1%	5%	3%	0%	-14%
Northern Ireland	2%	-1%	-1%	11%	10%	2%	8%	5%	0%	8%
Scotland	11%	10%	-11%	5%	3%	8%	17%	15%	0%	-10%
Wales	6%	31%	-4%	16%	13%	16%	24%	19%	0%	-11%
UK	-1%	1%	-7%	4%	4%	2%	8%	5%	0%	-0%

Note: The percentage change is not recorded in the above table for groups with fewer than 10 placed applicants in that cycle or in the 2018 cycle.

B.25 Placed applicants at 6 days after A level results day: domiciled in Scotland

Selected provider countries: difference between cycle and 2018 cycle (at 6 days after A level results day)

- England
- Northern Ireland
- Scotland
- Wales
- UK



Note: The percentage change is not plotted in the above chart for groups with fewer than 30 placed applicants in any one cycle.

B.26 Placed applicants at 6 days after A level results day: domiciled in Scotland

Placed applicants by provider country (at 6 days after A level results day)

Country of provider	2010	2011	2012	2013	2014	2015	2016	2017	2018	2019
England	1,650	1,530	1,360	1,420	1,410	1,570	1,620	1,540	1,440	1,460
Northern Ireland	20	20	30	10	20	20	20	30	30	20
Scotland	25,980	25,810	25,810	26,310	27,180	29,970	31,250	31,890	32,480	31,260
Wales	50	60	50	60	60	50	40	50	40	30
UK	27,690	27,410	27,250	27,800	28,660	31,600	32,920	33,500	33,990	32,770

B.27 Placed applicants at 6 days after A level results day: domiciled in Scotland

Selected provider countries: difference between cycle and 2018 cycle (at 6 days after A level results day)

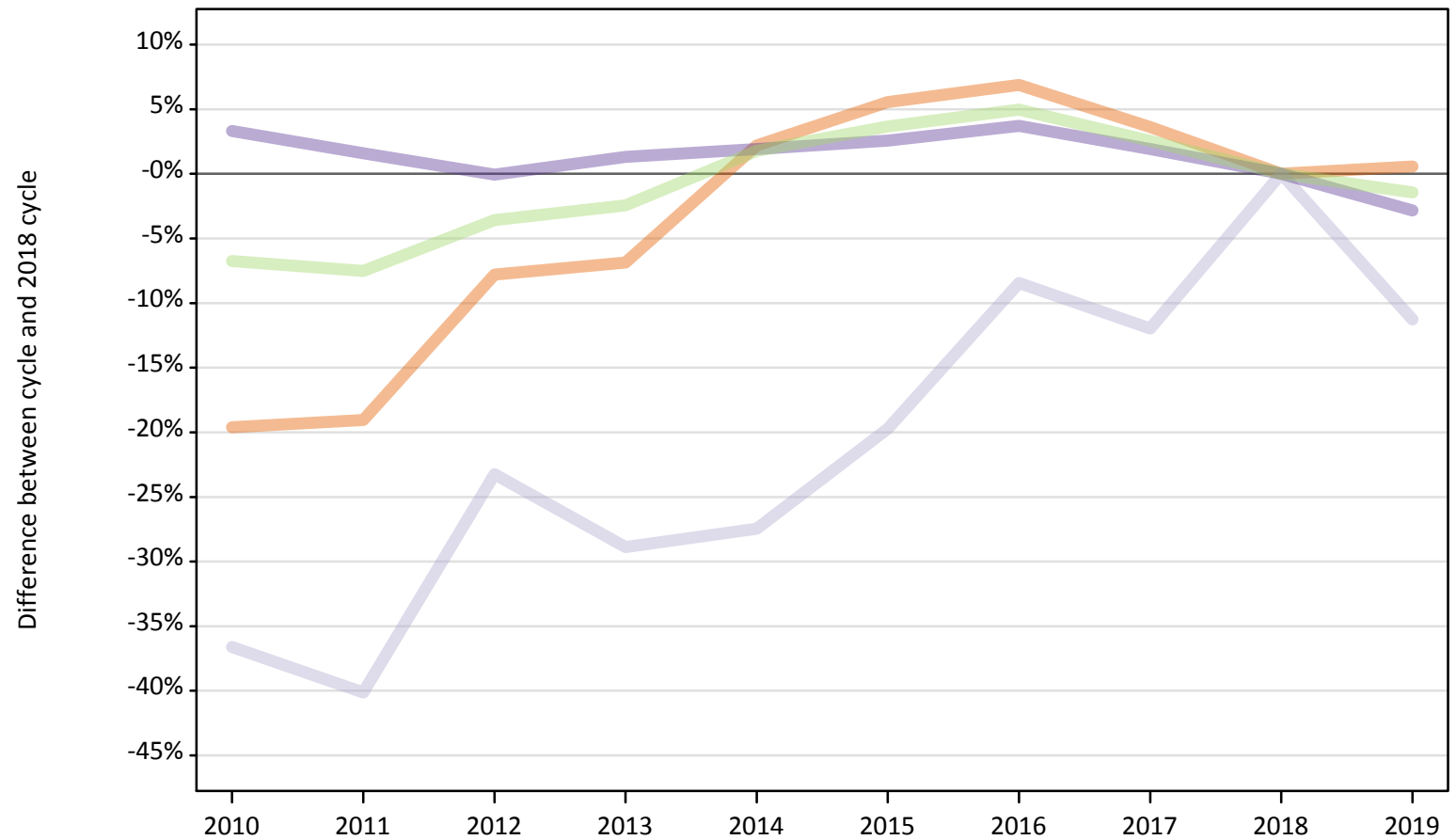
Country of provider	2010	2011	2012	2013	2014	2015	2016	2017	2018	2019
England	14%	6%	-5%	-1%	-2%	9%	13%	7%	0%	1%
Northern Ireland	-12%	-35%	4%	-54%	-35%	-27%	-38%	15%	0%	-31%
Scotland	-20%	-21%	-21%	-19%	-16%	-8%	-4%	-2%	0%	-4%
Wales	17%	51%	15%	56%	46%	12%	2%	12%	0%	-17%
UK	-19%	-19%	-20%	-18%	-16%	-7%	-3%	-1%	0%	-4%

Note: The percentage change is not recorded in the above table for groups with fewer than 10 placed applicants in that cycle or in the 2018 cycle.

B.28 Placed applicants at 6 days after A level results day: domiciled in Wales

Selected provider countries: difference between cycle and 2018 cycle (at 6 days after A level results day)

- England
- Northern Ireland
- Scotland
- Wales
- UK



Note: The percentage change is not plotted in the above chart for groups with fewer than 30 placed applicants in any one cycle.

B.29 Placed applicants at 6 days after A level results day: domiciled in Wales

Placed applicants by provider country (at 6 days after A level results day)

Country of provider	2010	2011	2012	2013	2014	2015	2016	2017	2018	2019
England	6,090	6,130	6,980	7,050	7,740	7,990	8,100	7,850	7,570	7,620
Northern Ireland	10	10	0	0	10	10	10	10	10	10
Scotland	90	90	110	100	100	110	130	130	140	130
Wales	10,440	10,270	10,100	10,240	10,300	10,370	10,480	10,300	10,110	9,820
UK	16,630	16,490	17,200	17,400	18,150	18,490	18,720	18,290	17,830	17,580

B.30 Placed applicants at 6 days after A level results day: domiciled in Wales

Selected provider countries: difference between cycle and 2018 cycle (at 6 days after A level results day)

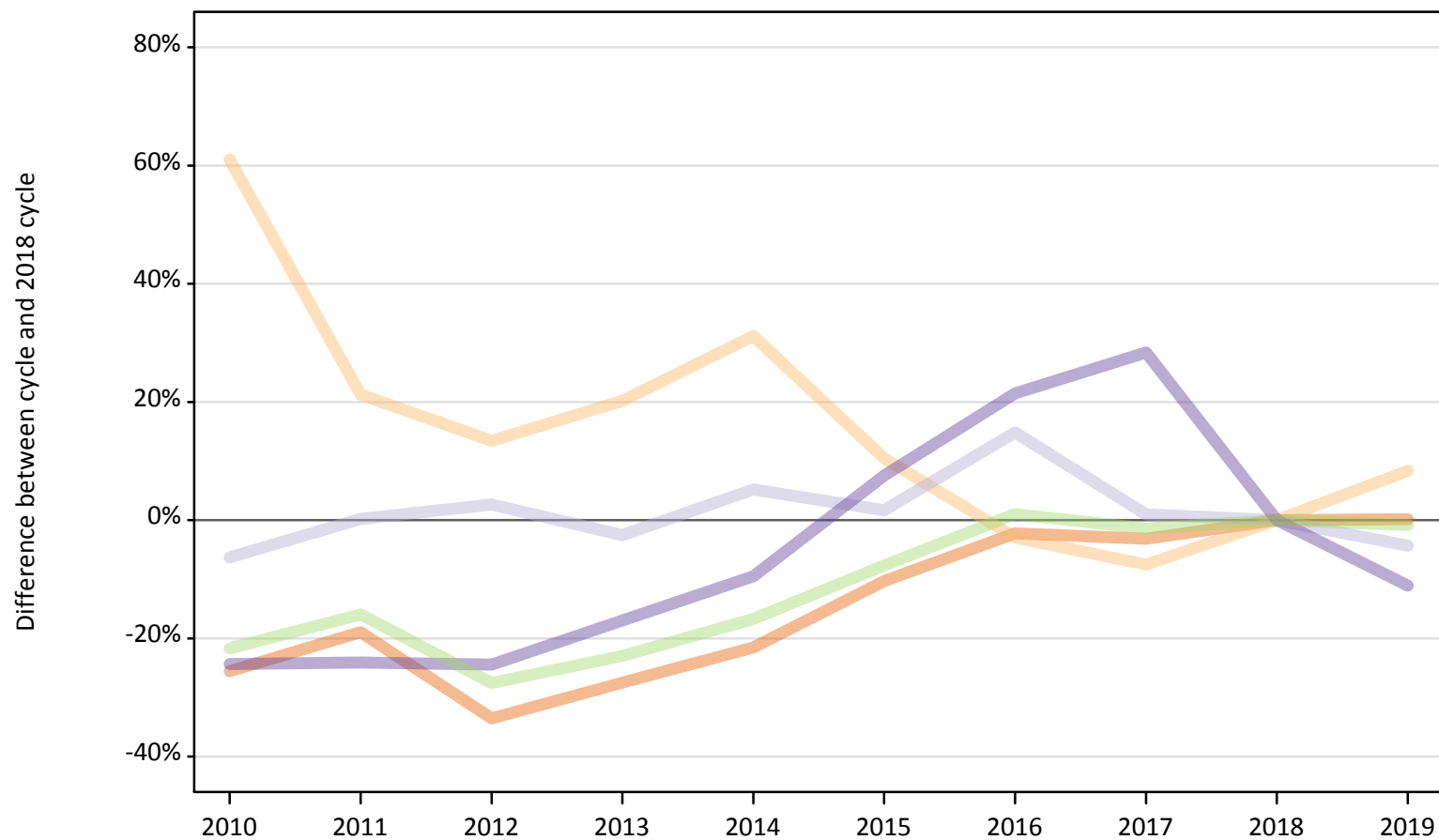
Country of provider	2010	2011	2012	2013	2014	2015	2016	2017	2018	2019
England	-20%	-19%	-8%	-7%	2%	6%	7%	4%	0%	1%
Northern Ireland						10%	0%	40%	0%	20%
Scotland	-37%	-40%	-23%	-29%	-27%	-20%	-8%	-12%	0%	-11%
Wales	3%	2%	-0%	1%	2%	3%	4%	2%	0%	-3%
UK	-7%	-8%	-4%	-2%	2%	4%	5%	3%	0%	-1%

Note: The percentage change is not recorded in the above table for groups with fewer than 10 placed applicants in that cycle or in the 2018 cycle.

B.31 Placed applicants at 6 days after A level results day: domiciled in EU (excluding UK)

Selected provider countries: difference between cycle and 2018 cycle (at 6 days after A level results day)

- England
- Northern Ireland
- Scotland
- Wales
- UK



Note: The percentage change is not plotted in the above chart for groups with fewer than 30 placed applicants in any one cycle.

B.32 Placed applicants at 6 days after A level results day: domiciled in EU (excluding UK)

Placed applicants by provider country (at 6 days after A level results day)

Country of provider	2010	2011	2012	2013	2014	2015	2016	2017	2018	2019
England	17,220	18,740	15,370	16,770	18,140	20,740	22,610	22,400	23,120	23,160
Northern Ireland	600	450	420	450	490	410	360	340	370	400
Scotland	3,730	3,990	4,090	3,880	4,190	4,050	4,570	4,020	3,980	3,810
Wales	810	820	810	890	970	1,160	1,310	1,380	1,080	960
UK	22,360	24,000	20,690	21,990	23,790	26,360	28,850	28,140	28,550	28,330

B.33 Placed applicants at 6 days after A level results day: domiciled in EU (excluding UK)

Selected provider countries: difference between cycle and 2018 cycle (at 6 days after A level results day)

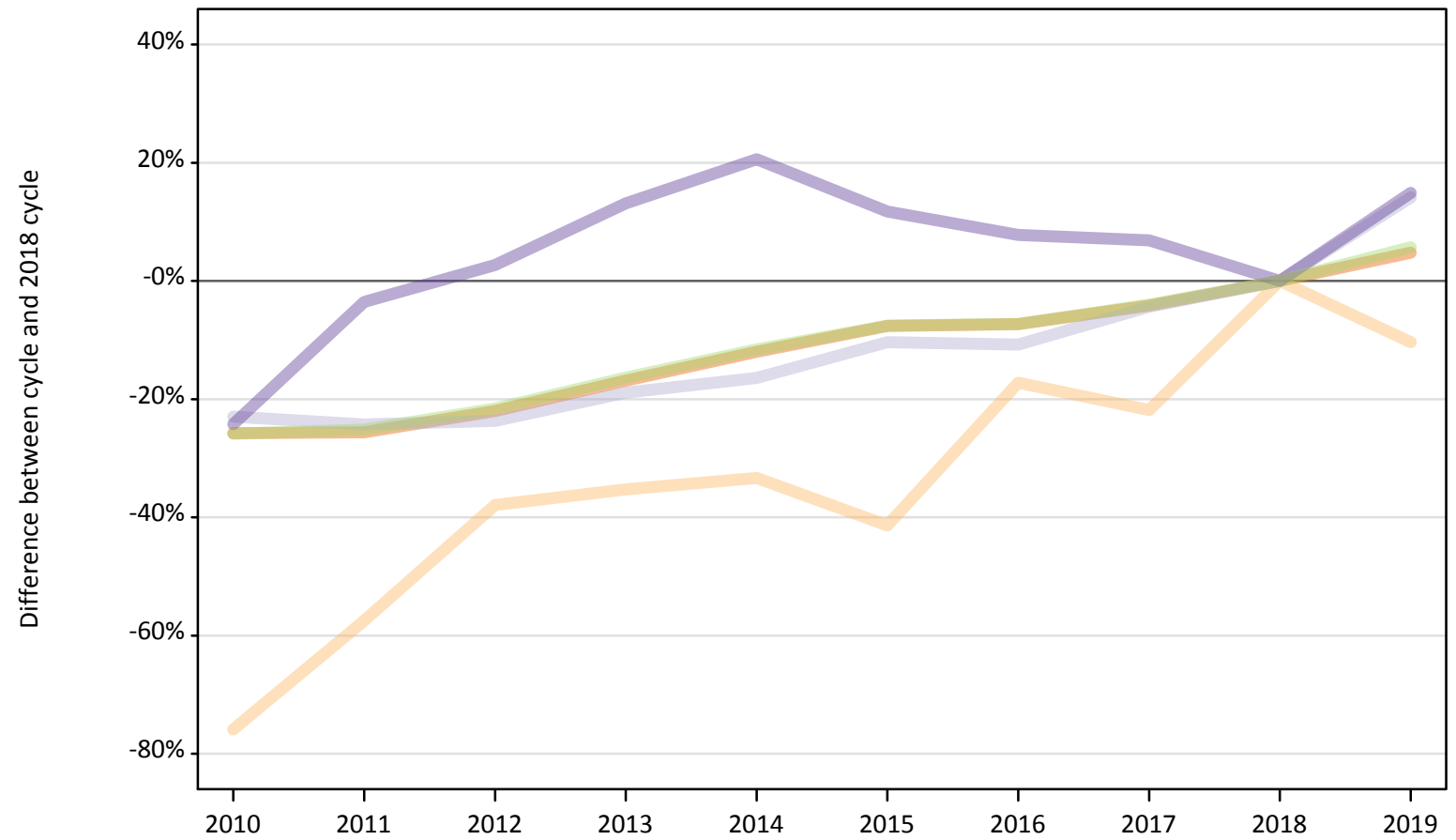
Country of provider	2010	2011	2012	2013	2014	2015	2016	2017	2018	2019
England	-26%	-19%	-34%	-27%	-22%	-10%	-2%	-3%	0%	0%
Northern Ireland	61%	21%	13%	20%	31%	10%	-3%	-8%	0%	8%
Scotland	-6%	0%	3%	-3%	5%	2%	15%	1%	0%	-4%
Wales	-24%	-24%	-24%	-17%	-9%	8%	21%	28%	0%	-11%
UK	-22%	-16%	-28%	-23%	-17%	-8%	1%	-1%	0%	-1%

Note: The percentage change is not recorded in the above table for groups with fewer than 10 placed applicants in that cycle or in the 2018 cycle.

B.34 Placed applicants at 6 days after A level results day: domiciled in Not EU

Selected provider countries: difference between cycle and 2018 cycle (at 6 days after A level results day)

- England
- Northern Ireland
- Scotland
- Wales
- UK



Note: The percentage change is not plotted in the above chart for groups with fewer than 30 placed applicants in any one cycle.

B.35 Placed applicants at 6 days after A level results day: domiciled in Not EU

Placed applicants by provider country (at 6 days after A level results day)

Country of provider	2010	2011	2012	2013	2014	2015	2016	2017	2018	2019
England	23,180	23,230	24,370	25,970	27,500	28,860	28,960	29,950	31,240	32,730
Northern Ireland	60	110	160	170	170	150	220	200	260	230
Scotland	2,210	2,180	2,190	2,330	2,400	2,580	2,570	2,750	2,880	3,280
Wales	730	930	990	1,090	1,160	1,070	1,040	1,030	960	1,100
UK	26,190	26,440	27,710	29,550	31,240	32,660	32,770	33,930	35,340	37,350

B.36 Placed applicants at 6 days after A level results day: domiciled in Not EU

Selected provider countries: difference between cycle and 2018 cycle (at 6 days after A level results day)

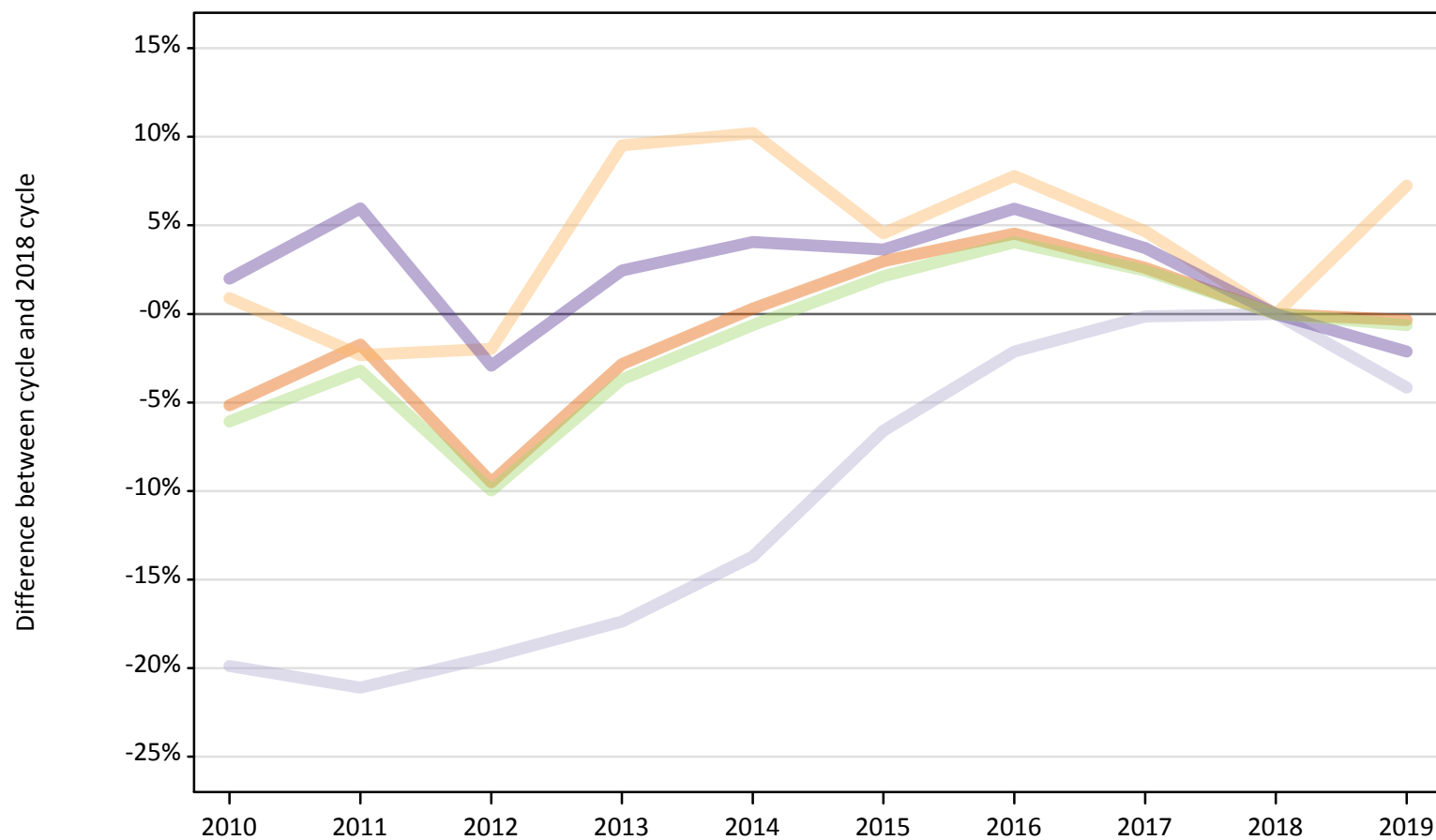
Country of provider	2010	2011	2012	2013	2014	2015	2016	2017	2018	2019
England	-26%	-26%	-22%	-17%	-12%	-8%	-7%	-4%	0%	5%
Northern Ireland	-76%	-57%	-38%	-35%	-33%	-41%	-17%	-22%	0%	-10%
Scotland	-23%	-24%	-24%	-19%	-16%	-10%	-11%	-4%	0%	14%
Wales	-24%	-4%	3%	13%	21%	12%	8%	7%	0%	15%
UK	-26%	-25%	-22%	-16%	-12%	-8%	-7%	-4%	0%	6%

Note: The percentage change is not recorded in the above table for groups with fewer than 10 placed applicants in that cycle or in the 2018 cycle.

B.37 Placed applicants at 6 days after A level results day: domiciled in UK

Selected provider countries: difference between cycle and 2018 cycle (at 6 days after A level results day)

- England
- Northern Ireland
- Scotland
- Wales
- UK



Note: The percentage change is not plotted in the above chart for groups with fewer than 30 placed applicants in any one cycle.

B.38 Placed applicants at 6 days after A level results day: domiciled in UK

Placed applicants by provider country (at 6 days after A level results day)

Country of provider	2010	2011	2012	2013	2014	2015	2016	2017	2018	2019
England	318,550	330,050	303,910	326,360	336,880	345,860	351,090	344,640	335,880	334,710
Northern Ireland	8,340	8,070	8,100	9,050	9,110	8,640	8,910	8,650	8,270	8,870
Scotland	30,570	30,100	30,770	31,520	32,920	35,630	37,340	38,090	38,150	36,560
Wales	20,370	21,170	19,390	20,470	20,790	20,700	21,170	20,720	19,980	19,550
UK	377,830	389,390	362,170	387,400	399,700	410,840	418,500	412,110	402,280	399,690

B.39 Placed applicants at 6 days after A level results day: domiciled in UK

Selected provider countries: difference between cycle and 2018 cycle (at 6 days after A level results day)

Country of provider	2010	2011	2012	2013	2014	2015	2016	2017	2018	2019
England	-5%	-2%	-10%	-3%	0%	3%	5%	3%	0%	-0%
Northern Ireland	1%	-2%	-2%	10%	10%	5%	8%	5%	0%	7%
Scotland	-20%	-21%	-19%	-17%	-14%	-7%	-2%	-0%	0%	-4%
Wales	2%	6%	-3%	2%	4%	4%	6%	4%	0%	-2%
UK	-6%	-3%	-10%	-4%	-1%	2%	4%	2%	0%	-1%

Note: The percentage change is not recorded in the above table for groups with fewer than 10 placed applicants in that cycle or in the 2018 cycle.