

## Analysis at 00:05 on Wednesday 21 August 2019 (6 days after A level results day)

### C.1 Placed applicants by country of domicile and age group, 2019 cycle (6 days after A level results day)

Domicile of applicant	Age group				
	17 and under	18	19	20 to 24	25 and over
England	550	202,390	62,950	43,720	27,080
Northern Ireland	30	7,560	2,200	2,130	760
Scotland	510	14,020	4,280	7,590	6,370
Wales	20	9,760	3,220	2,630	1,950
UK	1,100	233,720	72,640	56,070	36,150

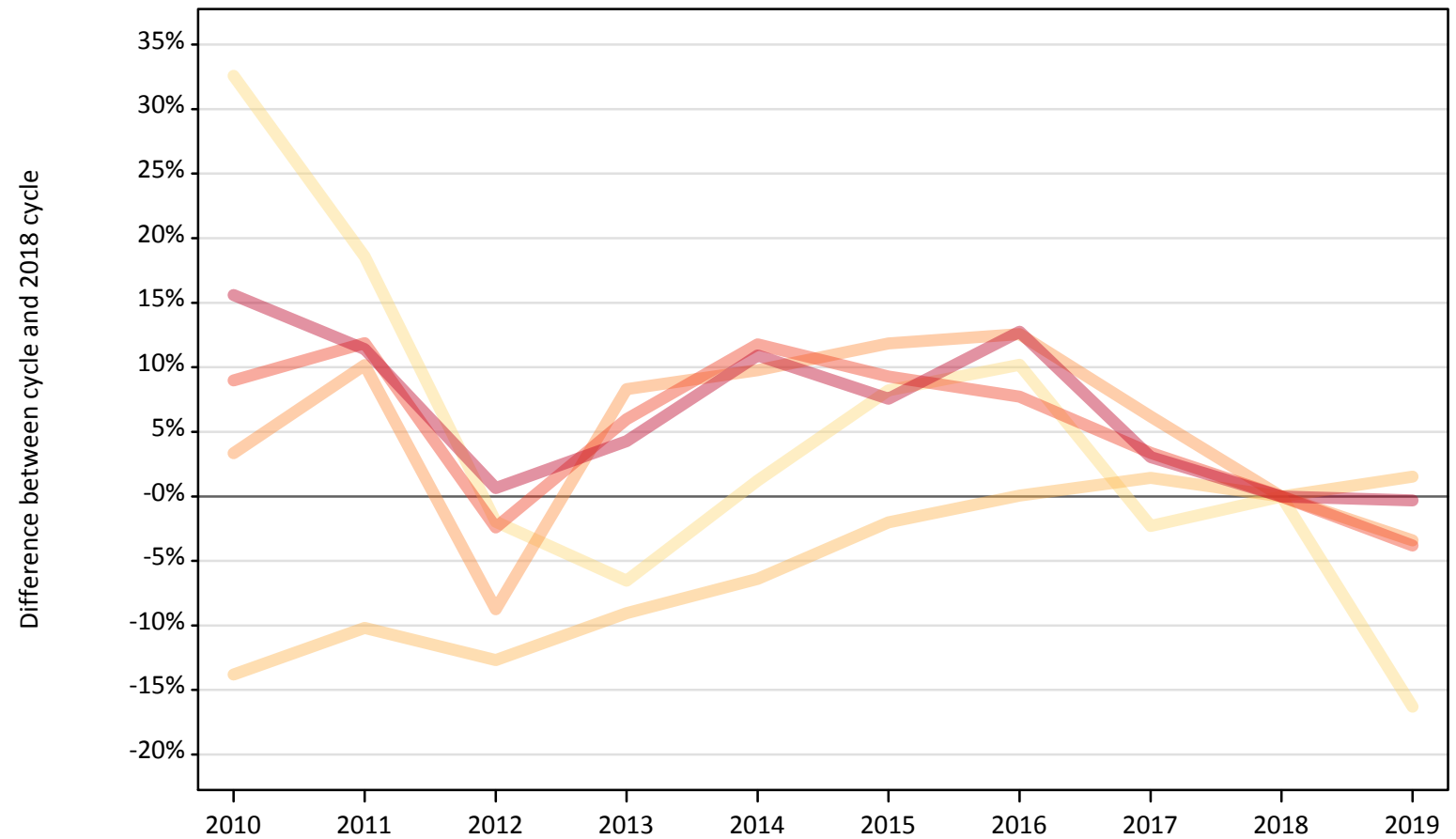
### C.2 Proportion of 18 year old population placed by country of domicile, 2019 cycle (6 days after A level results day)

Domicile of applicant	Age group	2019
England	18	33.8%
Northern Ireland	18	33.7%
Scotland	18	26.0%
Wales	18	29.1%

### C.3 Placed applicants from England by age group at 6 days after A level results day

Selected age groups: difference between cycle and 2018 cycle

- 17 and under
- 18
- 19
- 20 to 24
- 25 and over



Note: The percentage change is not plotted in the above chart for groups with fewer than 30 placed applicants in any one cycle.

#### C.4 Placed applicants from England by age group at 6 days after A level results day

All age groups

Domicile of applicant	Age group	2010	2011	2012	2013	2014	2015	2016	2017	2018	2019
England	17 and under	870	780	640	610	670	710	720	640	660	550
	18	171,800	179,000	174,060	181,290	186,570	195,310	199,450	202,160	199,330	202,390
	19	67,350	71,800	59,480	70,590	71,540	72,900	73,370	69,200	65,170	62,950
	20 to 24	49,530	50,840	44,360	48,170	50,800	49,660	48,960	46,980	45,450	43,720
	25 and over	31,400	30,260	27,330	28,320	30,120	29,210	30,620	27,990	27,160	27,080

#### C.5 Placed applicants from England by age group at 6 days after A level results day

Selected age groups: difference between cycle and 2018 cycle

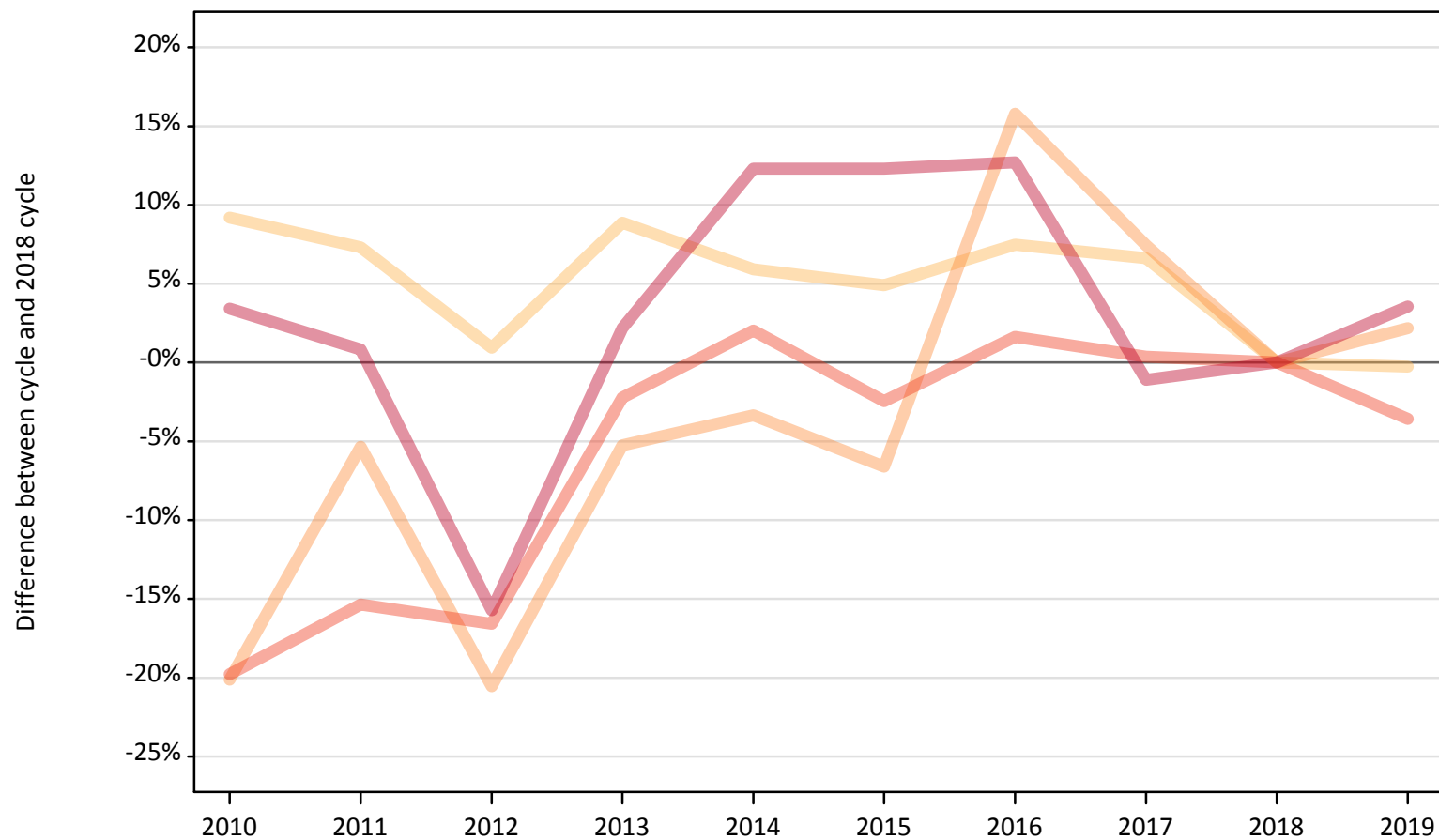
Domicile of applicant	Age group	2010	2011	2012	2013	2014	2015	2016	2017	2018	2019
England	17 and under	33%	19%	-2%	-7%	1%	8%	10%	-2%	0%	-16%
	18	-14%	-10%	-13%	-9%	-6%	-2%	0%	1%	0%	2%
	19	3%	10%	-9%	8%	10%	12%	13%	6%	0%	-3%
	20 to 24	9%	12%	-2%	6%	12%	9%	8%	3%	0%	-4%
	25 and over	16%	11%	1%	4%	11%	8%	13%	3%	0%	-0%

Note: The percentage change is not recorded in the above table for groups with fewer than 10 placed applicants in that cycle or in the 2018 cycle.

## C.6 Placed applicants from Northern Ireland by age group at 6 days after A level results day

Selected age groups: difference between cycle and 2018 cycle

- 17 and under
- 18
- 19
- 20 to 24
- 25 and over



Note: The percentage change is not plotted in the above chart for groups with fewer than 30 placed applicants in any one cycle.

### C.7 Placed applicants from Northern Ireland by age group at 6 days after A level results day

All age groups

Domicile of applicant	Age group	2010	2011	2012	2013	2014	2015	2016	2017	2018	2019
Northern Ireland	17 and under	40	40	40	20	20	20	30	20	20	30
	18	8,270	8,130	7,650	8,250	8,020	7,950	8,140	8,080	7,580	7,560
	19	1,720	2,040	1,710	2,040	2,080	2,010	2,490	2,310	2,150	2,200
	20 to 24	1,770	1,870	1,840	2,160	2,250	2,160	2,250	2,220	2,210	2,130
	25 and over	760	740	620	750	820	820	830	720	730	760

### C.8 Placed applicants from Northern Ireland by age group at 6 days after A level results day

Selected age groups: difference between cycle and 2018 cycle

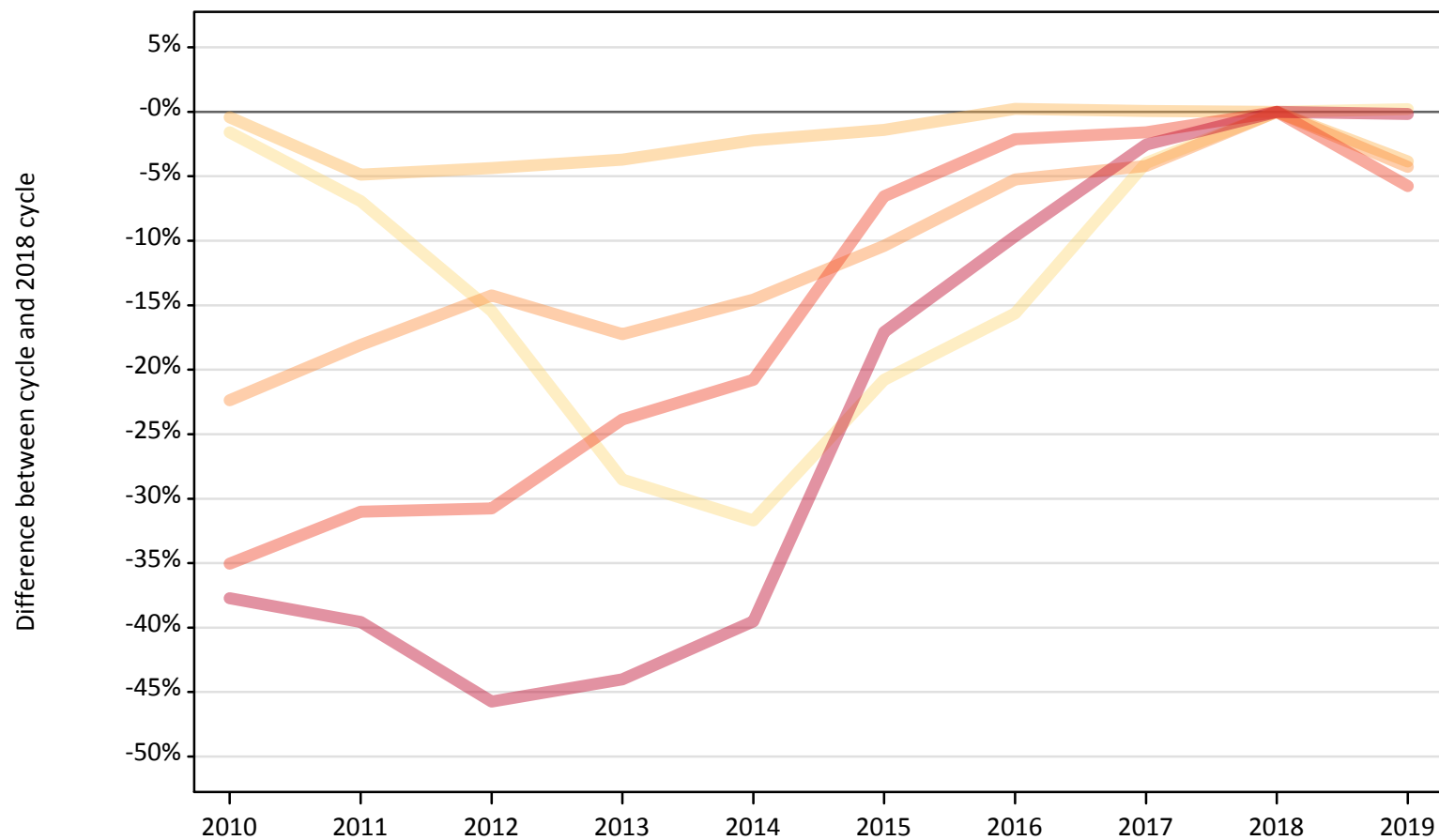
Domicile of applicant	Age group	2010	2011	2012	2013	2014	2015	2016	2017	2018	2019
Northern Ireland	17 and under	50%	58%	75%	-17%	-25%	-21%	29%	-29%	0%	13%
	18	9%	7%	1%	9%	6%	5%	7%	7%	0%	-0%
	19	-20%	-5%	-21%	-5%	-3%	-7%	16%	7%	0%	2%
	20 to 24	-20%	-15%	-17%	-2%	2%	-2%	2%	0%	0%	-4%
	25 and over	3%	1%	-16%	2%	12%	12%	13%	-1%	0%	4%

Note: The percentage change is not recorded in the above table for groups with fewer than 10 placed applicants in that cycle or in the 2018 cycle.

### C.9 Placed applicants from Scotland by age group at 6 days after A level results day

Selected age groups: difference between cycle and 2018 cycle

- 17 and under
- 18
- 19
- 20 to 24
- 25 and over



Note: The percentage change is not plotted in the above chart for groups with fewer than 30 placed applicants in any one cycle.

### C.10 Placed applicants from Scotland by age group at 6 days after A level results day

All age groups

Domicile of applicant	Age group	2010	2011	2012	2013	2014	2015	2016	2017	2018	2019
Scotland	17 and under	500	470	430	360	350	400	430	490	510	510
	18	14,520	13,870	13,950	14,040	14,260	14,380	14,620	14,590	14,580	14,020
	19	3,470	3,660	3,840	3,700	3,820	4,010	4,240	4,290	4,470	4,280
	20 to 24	5,230	5,550	5,580	6,130	6,380	7,520	7,880	7,920	8,050	7,590
	25 and over	3,970	3,860	3,460	3,570	3,860	5,290	5,770	6,220	6,380	6,370

### C.11 Placed applicants from Scotland by age group at 6 days after A level results day

Selected age groups: difference between cycle and 2018 cycle

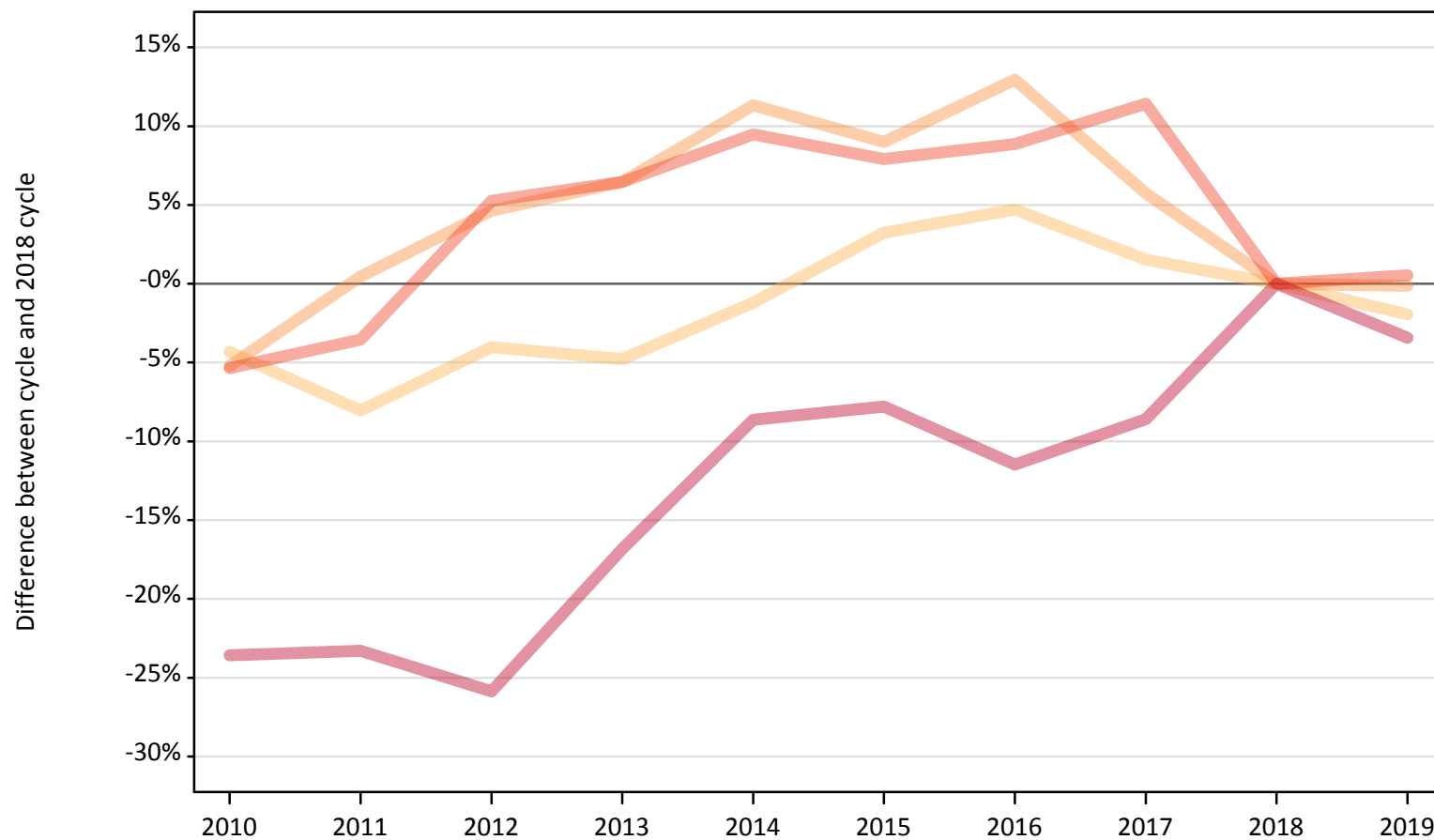
Domicile of applicant	Age group	2010	2011	2012	2013	2014	2015	2016	2017	2018	2019
Scotland	17 and under	-2%	-7%	-15%	-29%	-32%	-21%	-16%	-4%	0%	0%
	18	-0%	-5%	-4%	-4%	-2%	-1%	0%	0%	0%	-4%
	19	-22%	-18%	-14%	-17%	-15%	-10%	-5%	-4%	0%	-4%
	20 to 24	-35%	-31%	-31%	-24%	-21%	-7%	-2%	-2%	0%	-6%
	25 and over	-38%	-40%	-46%	-44%	-40%	-17%	-10%	-3%	0%	-0%

Note: The percentage change is not recorded in the above table for groups with fewer than 10 placed applicants in that cycle or in the 2018 cycle.

### C.12 Placed applicants from Wales by age group at 6 days after A level results day

Selected age groups: difference between cycle and 2018 cycle

- 17 and under
- 18
- 19
- 20 to 24
- 25 and over



Note: The percentage change is not plotted in the above chart for groups with fewer than 30 placed applicants in any one cycle.



### C.13 Placed applicants from Wales by age group at 6 days after A level results day

All age groups

Domicile of applicant	Age group	2010	2011	2012	2013	2014	2015	2016	2017	2018	2019
Wales	17 and under	30	30	20	30	20	20	20	20	20	20
	18	9,520	9,150	9,560	9,480	9,840	10,280	10,420	10,110	9,960	9,760
	19	3,050	3,240	3,370	3,430	3,590	3,510	3,640	3,410	3,220	3,220
	20 to 24	2,480	2,530	2,760	2,790	2,870	2,830	2,850	2,920	2,620	2,630
	25 and over	1,540	1,550	1,490	1,680	1,840	1,860	1,780	1,840	2,010	1,950

### C.14 Placed applicants from Wales by age group at 6 days after A level results day

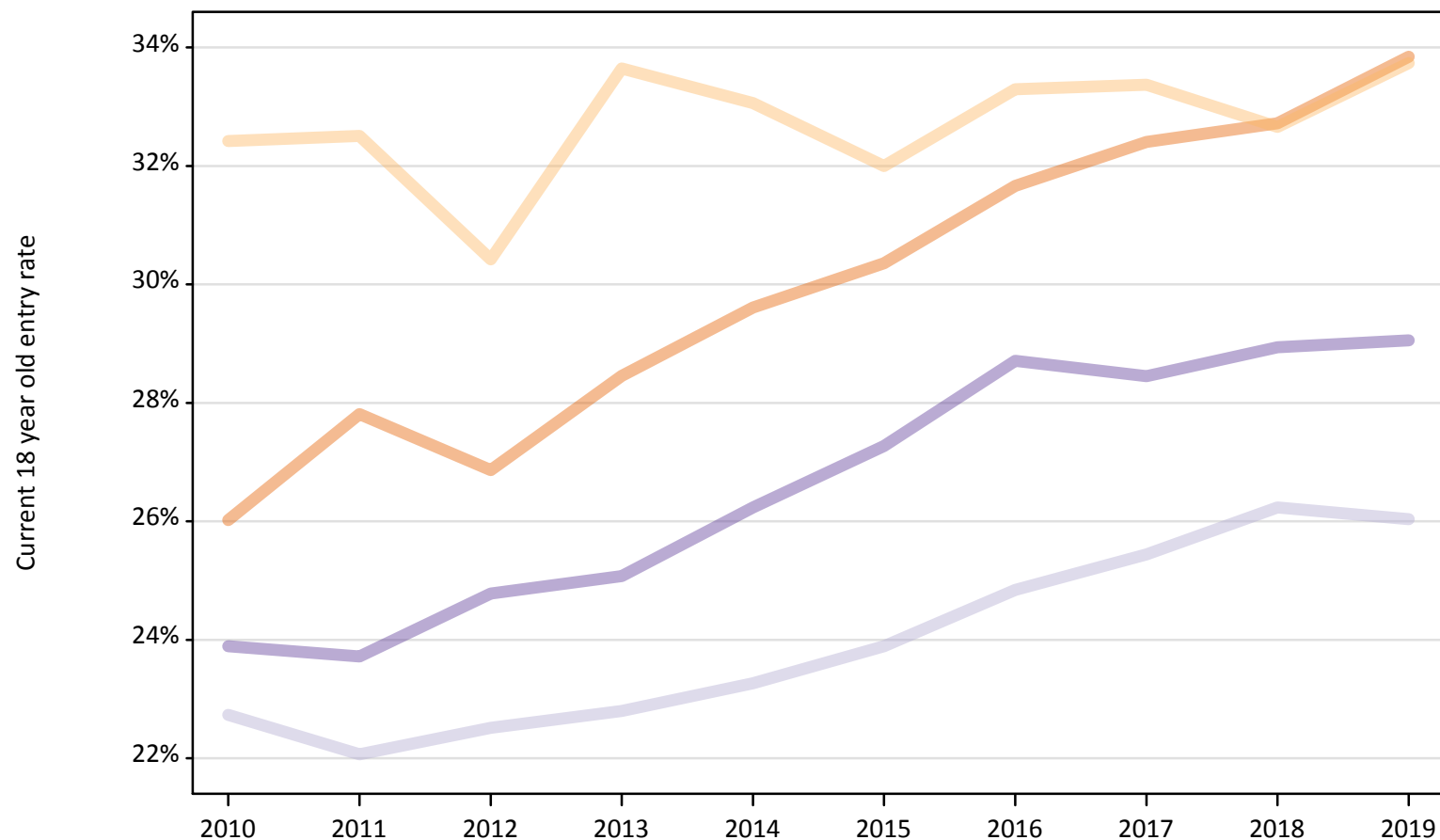
Selected age groups: difference between cycle and 2018 cycle

Domicile of applicant	Age group	2010	2011	2012	2013	2014	2015	2016	2017	2018	2019
Wales	17 and under	42%	29%	-13%	13%	-13%	-29%	-4%	-33%	0%	-17%
	18	-4%	-8%	-4%	-5%	-1%	3%	5%	2%	0%	-2%
	19	-5%	0%	5%	6%	11%	9%	13%	6%	0%	-0%
	20 to 24	-5%	-4%	5%	6%	9%	8%	9%	11%	0%	1%
	25 and over	-24%	-23%	-26%	-17%	-9%	-8%	-11%	-9%	0%	-3%

Note: The percentage change is not recorded in the above table for groups with fewer than 10 placed applicants in that cycle or in the 2018 cycle.

### C.15 Entry rates for 18 year olds by UK country of domicile: 6 days after A level results day

Placed 18 year old applicants as a proportion of the 18 year old population



### C.16 Entry rates for 18 year olds by UK country of domicile: 6 days after A level results day

Placed 18 year old applicants as a proportion of the 18 year old population

Domicile of applicant	Age group	2010	2011	2012	2013	2014	2015	2016	2017	2018	2019
England	18	26.0%	27.8%	26.9%	28.5%	29.6%	30.4%	31.7%	32.4%	32.7%	33.8%
Northern Ireland	18	32.4%	32.5%	30.4%	33.6%	33.1%	32.0%	33.3%	33.4%	32.7%	33.7%
Scotland	18	22.7%	22.1%	22.5%	22.8%	23.3%	23.9%	24.8%	25.4%	26.2%	26.0%
Wales	18	23.9%	23.7%	24.8%	25.1%	26.2%	27.3%	28.7%	28.5%	28.9%	29.1%