

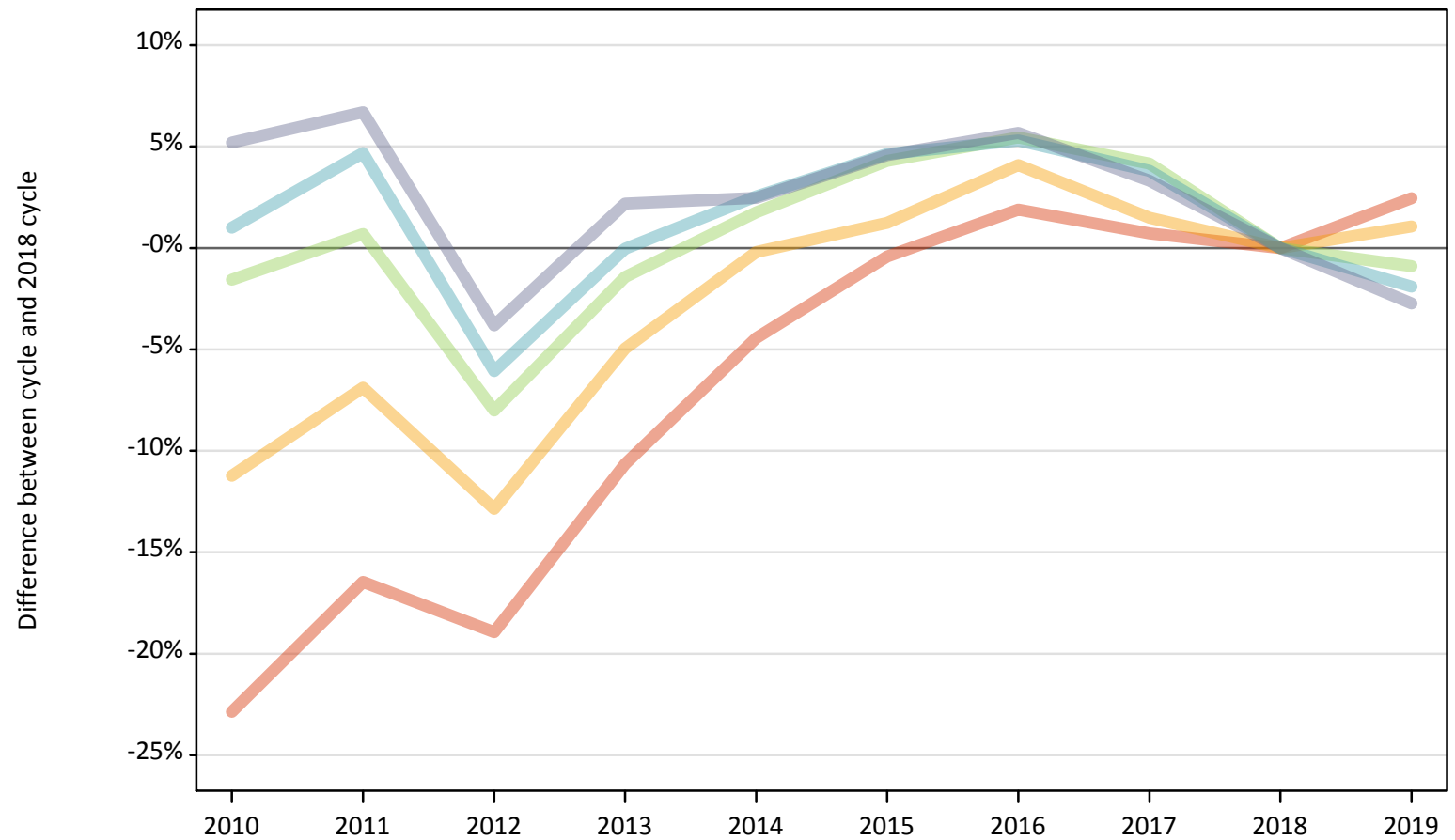
Daily Clearing Analysis: IMD2015

Analysis at 00:05 on Wednesday 21 August 2019 (6 days after A level results day)

J.1 Placed applicants from England by IMD2015 quintile: 6 days after A level results day

Placed applicants: change relative to 2018 cycle totals

- Quintile 1
- Quintile 2
- Quintile 3
- Quintile 4
- Quintile 5



Note: The percentage change is not plotted in the above chart for groups with fewer than 30 placed applicants in any one cycle.

J.2 Placed applicants from England by IMD2015 quintile: 6 days after A level results day

Applicant Status IMD2015		2010	2011	2012	2013	2014	2015	2016	2017	2018	2019
Placed	Quintile 1	47,770	51,730	50,200	55,330	59,170	61,670	63,100	62,370	61,920	63,450
	Quintile 2	54,120	56,760	53,120	57,940	60,840	61,720	63,450	61,880	60,960	61,610
	Quintile 3	61,950	63,370	57,890	62,040	64,040	65,640	66,370	65,550	62,930	62,370
	Quintile 4	69,990	72,550	65,100	69,280	71,070	72,510	72,980	71,940	69,300	67,980
	Quintile 5	86,180	87,410	78,790	83,710	83,940	85,670	86,560	84,640	81,920	79,680

J.3 Placed applicants from England by IMD2015 quintile: 6 days after A level results day

Placed applicants: change relative to 2018 cycle totals

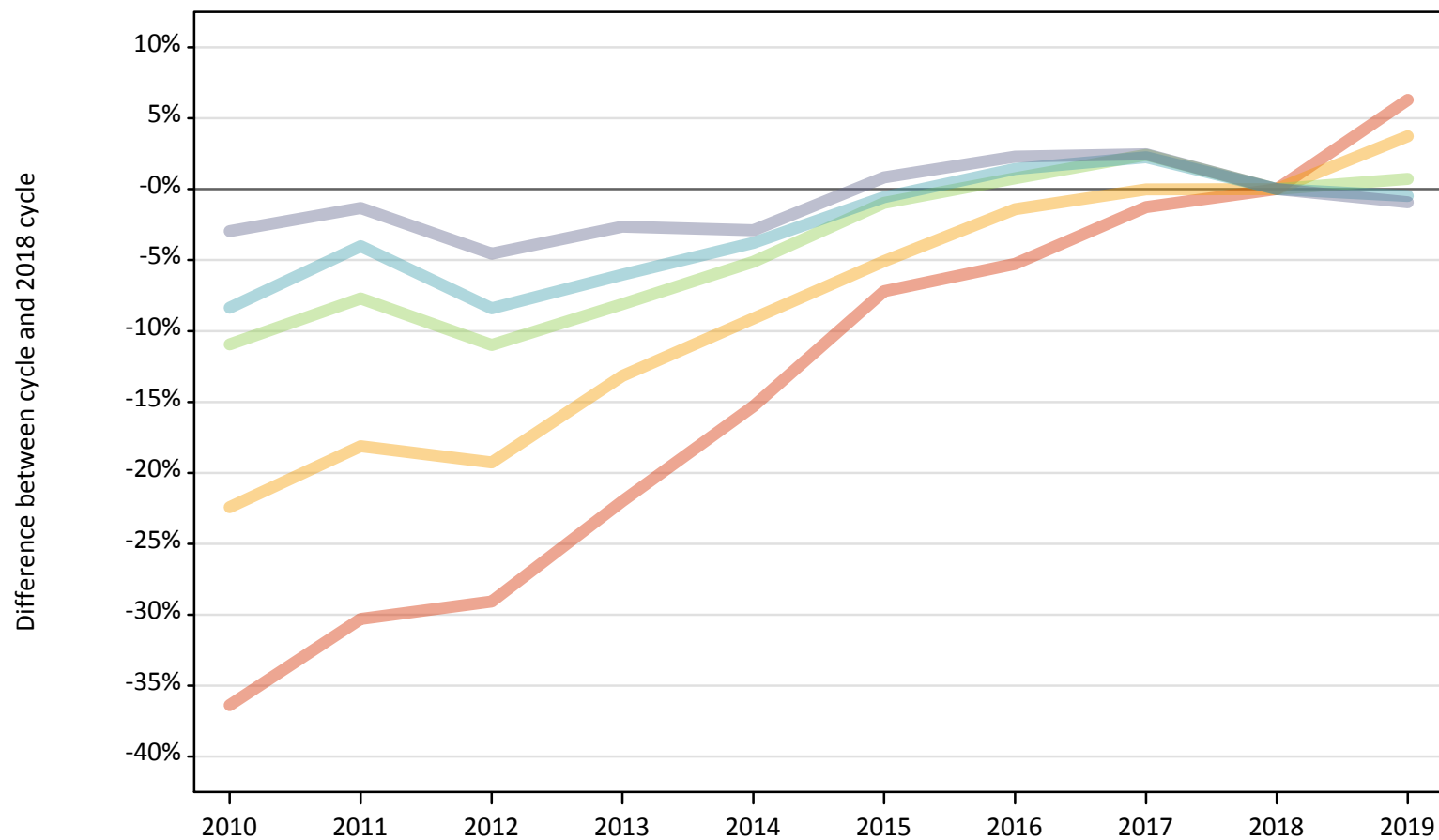
Applicant Status IMD2015		2010	2011	2012	2013	2014	2015	2016	2017	2018	2019
Placed	Quintile 1	-23%	-16%	-19%	-11%	-4%	-0%	2%	1%	0%	2%
	Quintile 2	-11%	-7%	-13%	-5%	-0%	1%	4%	1%	0%	1%
	Quintile 3	-2%	1%	-8%	-1%	2%	4%	5%	4%	0%	-1%
	Quintile 4	1%	5%	-6%	-0%	3%	5%	5%	4%	0%	-2%
	Quintile 5	5%	7%	-4%	2%	2%	5%	6%	3%	0%	-3%

Note: The percentage change is not recorded in the above table for groups with fewer than 10 placed applicants in that cycle or in the 2018 cycle.

J.4 Placed 18 year old applicants from England by IMD2015 quintile: 6 days after A level results day

Placed 18 year old applicants: change relative to 2018 cycle totals

- Quintile 1
- Quintile 2
- Quintile 3
- Quintile 4
- Quintile 5



Note: The percentage change is not plotted in the above chart for groups with fewer than 30 placed applicants in any one cycle.

J.5 Placed 18 year old applicants from England by IMD2015 quintile: 6 days after A level results day

Applicant Status IMD2015		2010	2011	2012	2013	2014	2015	2016	2017	2018	2019
Placed	Quintile 1	19,150	20,970	21,340	23,470	25,480	27,930	28,510	29,710	30,090	31,990
	Quintile 2	25,070	26,460	26,090	28,060	29,360	30,680	31,860	32,310	32,320	33,530
	Quintile 3	32,810	34,010	32,790	33,860	34,950	36,480	37,120	37,730	36,840	37,110
	Quintile 4	40,150	42,050	40,130	41,170	42,160	43,560	44,440	44,800	43,810	43,600
	Quintile 5	54,310	55,220	53,410	54,480	54,340	56,420	57,240	57,340	55,960	55,440

J.6 Placed 18 year old applicants from England by IMD2015 quintile: 6 days after A level results day

Placed 18 year old applicants: change relative to 2018 cycle totals

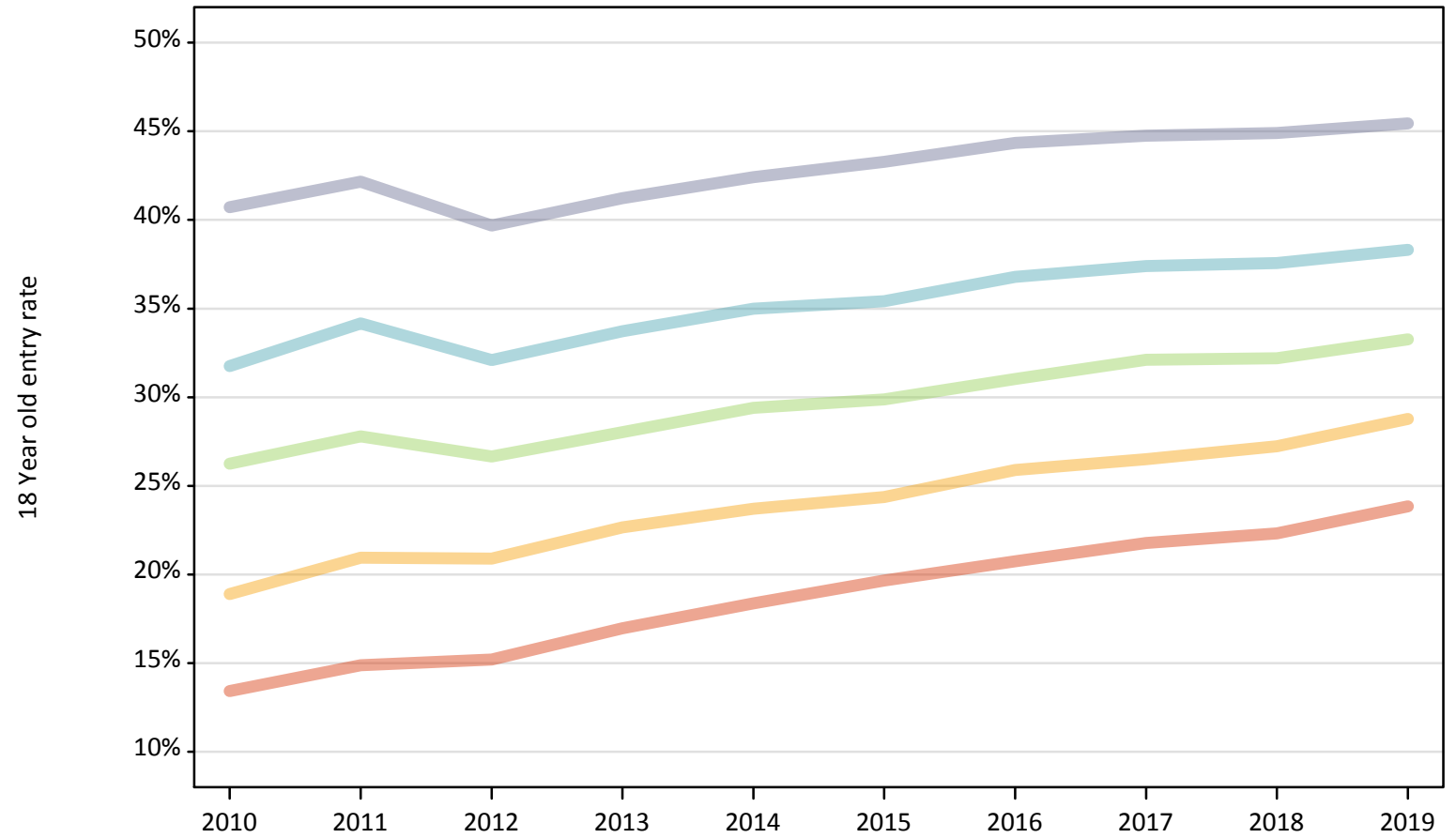
Applicant Status IMD2015		2010	2011	2012	2013	2014	2015	2016	2017	2018	2019
Placed	Quintile 1	-36%	-30%	-29%	-22%	-15%	-7%	-5%	-1%	0%	6%
	Quintile 2	-22%	-18%	-19%	-13%	-9%	-5%	-1%	-0%	0%	4%
	Quintile 3	-11%	-8%	-11%	-8%	-5%	-1%	1%	2%	0%	1%
	Quintile 4	-8%	-4%	-8%	-6%	-4%	-1%	1%	2%	0%	-0%
	Quintile 5	-3%	-1%	-5%	-3%	-3%	1%	2%	2%	0%	-1%

Note: The percentage change is not recorded in the above table for groups with fewer than 10 placed applicants in that cycle or in the 2018 cycle.

J.7 Placed 18 year old applicants from England by IMD2015 quintile: 6 days after A level results day

Placed 18 year old applicants: entry rate

- Quintile 1
- Quintile 2
- Quintile 3
- Quintile 4
- Quintile 5



J.8 Placed 18 year old applicants from England by IMD2015 quintile: 6 days after A level results day

Placed 18 year old applicants: entry rate

Applicant Status	IMD2015	2010	2011	2012	2013	2014	2015	2016	2017	2018	2019
Placed	Quintile 1	13.4%	14.9%	15.2%	17.0%	18.4%	19.7%	20.7%	21.8%	22.3%	23.8%
	Quintile 2	18.9%	20.9%	20.9%	22.7%	23.7%	24.4%	25.9%	26.5%	27.2%	28.8%
	Quintile 3	26.3%	27.8%	26.7%	28.0%	29.4%	29.9%	31.0%	32.1%	32.2%	33.3%
	Quintile 4	31.7%	34.2%	32.1%	33.7%	35.0%	35.4%	36.8%	37.4%	37.6%	38.3%
	Quintile 5	40.7%	42.2%	39.7%	41.2%	42.4%	43.3%	44.3%	44.7%	44.9%	45.4%

J.9 Placed 18 year old applicants from England by IMD2015 quintile: 6 days after A level results day

Placed 18 year old applicants: entry rate (indexed to 100 = Quintile 1)

Applicant Status	IMD2015	2010	2011	2012	2013	2014	2015	2016	2017	2018	2019
Placed	Quintile 1	100	100	100	100	100	100	100	100	100	100
	Quintile 2	141	141	137	134	129	124	125	122	122	121
	Quintile 3	196	187	175	165	160	152	150	147	144	139
	Quintile 4	237	230	211	199	191	180	177	172	168	161
	Quintile 5	303	283	261	243	231	220	214	205	201	191