

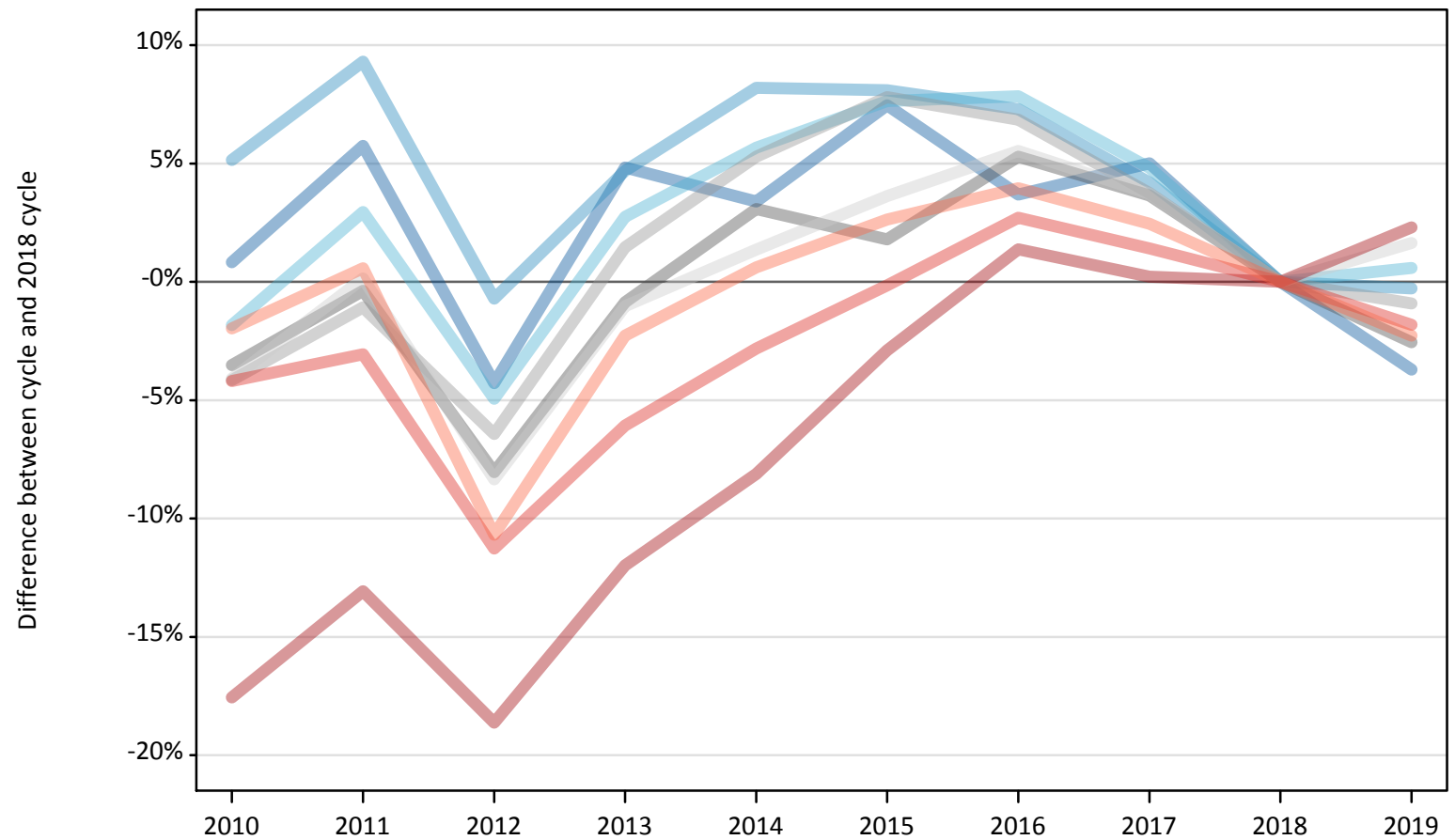
# Daily Clearing Analysis: Region

Analysis at 00:05 on Wednesday 21 August 2019 (6 days after A level results day)

## R.1 Placed applicants by region of domicile: 6 days after A level results day

Placed applicants: change relative to 2018 cycle totals

- North East
- North West
- Yorkshire and The Humber
- East Midlands
- West Midlands
- East of England
- London
- South East
- South West



Note: The percentage change is not plotted in the above chart for groups with fewer than 30 placed applicants in any one cycle.

## R.2 Placed applicants by region of domicile: 6 days after A level results day

Applicant Status	Domicile	2010	2011	2012	2013	2014	2015	2016	2017	2018	2019
Placed	North East	14,310	15,000	13,580	14,870	14,670	15,250	14,710	14,900	14,190	13,660
	North West	44,870	46,640	42,370	44,680	46,170	46,130	45,790	44,460	42,680	42,560
	Yorkshire and The Humber	29,370	30,810	28,440	30,740	31,620	32,210	32,270	31,360	29,920	30,100
	East Midlands	25,190	26,010	24,010	25,880	26,910	26,580	27,490	27,060	26,110	25,440
	West Midlands	33,240	34,310	32,450	35,190	36,520	37,390	37,060	35,990	34,680	34,370
	East of England	33,510	34,990	32,030	34,580	35,420	36,210	36,880	36,250	34,940	35,510
	London	55,340	58,360	54,620	59,090	61,690	65,180	68,060	67,280	67,130	68,680
	South East	54,350	54,990	50,330	53,280	55,120	56,640	58,260	57,520	56,730	55,690
	South West	30,770	31,570	28,030	30,670	31,580	32,210	32,630	32,160	31,390	30,670
	(England total)	320,950	332,670	305,870	328,990	339,690	347,800	353,130	346,970	337,760	336,680
	Scotland	27,690	27,410	27,250	27,800	28,660	31,600	32,920	33,500	33,990	32,770
	Northern Ireland	12,560	12,810	11,860	13,210	13,200	12,950	13,730	13,350	12,690	12,670
	Wales	16,630	16,490	17,200	17,400	18,150	18,490	18,720	18,290	17,830	17,580
	UK	377,830	389,390	362,170	387,400	399,700	410,840	418,500	412,110	402,280	399,690

### R.3 Placed applicants by region of domicile: 6 days after A level results day

Placed applicants: change relative to 2018 cycle totals

Applicant Status	Domicile	2010	2011	2012	2013	2014	2015	2016	2017	2018	2019
Placed	North East	1%	6%	-4%	5%	3%	7%	4%	5%	0%	-4%
	North West	5%	9%	-1%	5%	8%	8%	7%	4%	0%	-0%
	Yorkshire and The Humber	-2%	3%	-5%	3%	6%	8%	8%	5%	0%	1%
	East Midlands	-4%	-0%	-8%	-1%	3%	2%	5%	4%	0%	-3%
	West Midlands	-4%	-1%	-6%	1%	5%	8%	7%	4%	0%	-1%
	East of England	-4%	0%	-8%	-1%	1%	4%	6%	4%	0%	2%
	London	-18%	-13%	-19%	-12%	-8%	-3%	1%	0%	0%	2%
	South East	-4%	-3%	-11%	-6%	-3%	-0%	3%	1%	0%	-2%
	South West	-2%	1%	-11%	-2%	1%	3%	4%	2%	0%	-2%
	(England total)	-5%	-2%	-9%	-3%	1%	3%	5%	3%	0%	-0%
	Scotland	-19%	-19%	-20%	-18%	-16%	-7%	-3%	-1%	0%	-4%
	Northern Ireland	-1%	1%	-7%	4%	4%	2%	8%	5%	0%	-0%
	Wales	-7%	-8%	-4%	-2%	2%	4%	5%	3%	0%	-1%
	UK	-6%	-3%	-10%	-4%	-1%	2%	4%	2%	0%	-1%

Note: The percentage change is not recorded in the above table for groups with fewer than 10 placed applicants in that cycle or in the 2018 cycle.

#### R.4 Placed applicants by region of domicile: 6 days after A level results day

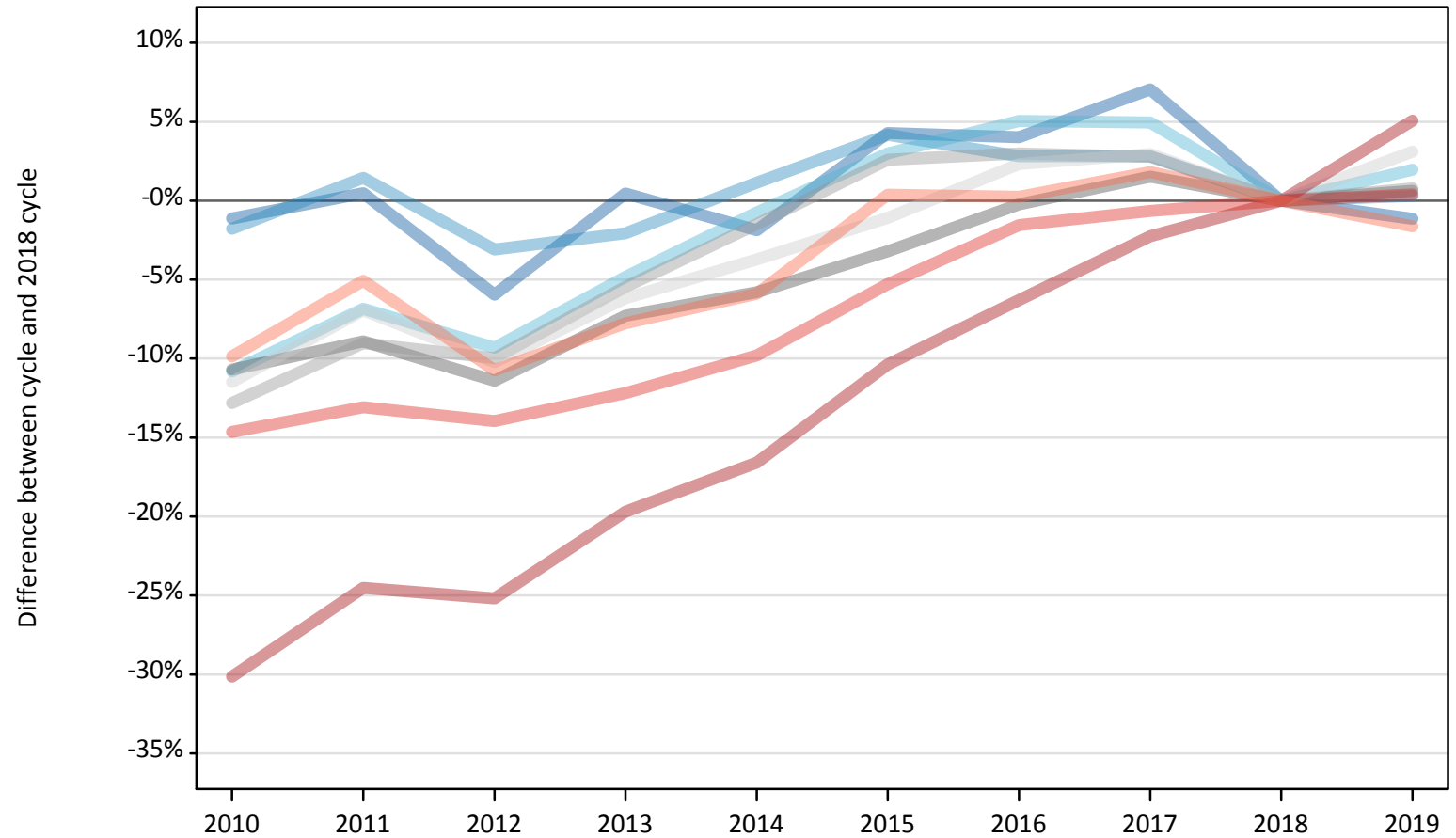
Placed applicants: absolute change relative to 2018 cycle totals

Applicant Status	Domicile	2010	2011	2012	2013	2014	2015	2016	2017	2018	2019
Placed	North East	120	820	-610	690	480	1,060	520	710	0	-530
	North West	2,200	3,970	-300	2,000	3,500	3,460	3,110	1,790	0	-120
	Yorkshire and The Humber	-550	880	-1,480	820	1,700	2,290	2,350	1,440	0	170
	East Midlands	-920	-100	-2,100	-230	810	470	1,380	950	0	-670
	West Midlands	-1,440	-380	-2,230	510	1,830	2,710	2,380	1,300	0	-320
	East of England	-1,430	50	-2,920	-360	470	1,270	1,930	1,300	0	570
	London	-11,790	-8,770	-12,510	-8,050	-5,450	-1,950	920	150	0	1,550
	South East	-2,380	-1,740	-6,390	-3,450	-1,600	-80	1,530	800	0	-1,030
	South West	-620	180	-3,360	-710	190	830	1,240	770	0	-710
	(England total)	-16,810	-5,090	-31,890	-8,780	1,930	10,040	15,370	9,210	0	-1,090
	Scotland	-6,300	-6,580	-6,740	-6,190	-5,330	-2,390	-1,070	-490	0	-1,230
	Northern Ireland	-140	120	-830	520	510	260	1,040	650	0	-20
	Wales	-1,200	-1,340	-640	-440	320	660	890	460	0	-260
	UK	-24,450	-12,890	-40,110	-14,880	-2,580	8,560	16,230	9,830	0	-2,590

## R.5 Placed 18 year old applicants by region of domicile: 6 days after A level results day

Placed 18 year old applicants: change relative to 2018 cycle totals

- North East
- North West
- Yorkshire and The Humber
- East Midlands
- West Midlands
- East of England
- London
- South East
- South West



Note: The percentage change is not plotted in the above chart for groups with fewer than 30 placed applicants in any one cycle.

## R.6 Placed 18 year old applicants by region of domicile: 6 days after A level results day

Applicant Status	Domicile	2010	2011	2012	2013	2014	2015	2016	2017	2018	2019
Placed	North East	7,810	7,940	7,430	7,930	7,750	8,240	8,220	8,460	7,900	7,810
	North West	25,010	25,830	24,670	24,930	25,750	26,520	26,170	26,170	25,460	25,530
	Yorkshire and The Humber	15,940	16,650	16,220	17,010	17,750	18,410	18,780	18,760	17,880	18,230
	East Midlands	14,110	14,390	14,000	14,650	14,880	15,290	15,760	16,040	15,800	15,900
	West Midlands	17,650	18,420	18,230	19,140	19,940	20,770	20,850	20,810	20,240	20,400
	East of England	19,450	20,450	19,730	20,620	21,160	21,740	22,490	22,630	21,980	22,660
	London	26,480	28,610	28,350	30,440	31,620	33,970	35,520	37,050	37,900	39,820
	South East	29,990	30,540	30,230	30,860	31,690	33,280	34,590	34,910	35,140	35,280
	South West	15,360	16,180	15,210	15,720	16,030	17,100	17,080	17,350	17,040	16,760
	(England total)	171,800	179,000	174,060	181,290	186,570	195,310	199,450	202,160	199,330	202,390
	Scotland	14,520	13,870	13,950	14,040	14,260	14,380	14,620	14,590	14,580	14,020
	Northern Ireland	8,270	8,130	7,650	8,250	8,020	7,950	8,140	8,080	7,580	7,560
	Wales	9,520	9,150	9,560	9,480	9,840	10,280	10,420	10,110	9,960	9,760
	UK	204,110	210,150	205,210	213,060	218,680	227,910	232,630	234,940	231,440	233,720

## R.7 Placed 18 year old applicants by region of domicile: 6 days after A level results day

Placed 18 year old applicants: change relative to 2018 cycle totals

Applicant Status	Domicile	2010	2011	2012	2013	2014	2015	2016	2017	2018	2019
Placed	North East	-1%	0%	-6%	0%	-2%	4%	4%	7%	0%	-1%
	North West	-2%	1%	-3%	-2%	1%	4%	3%	3%	0%	0%
	Yorkshire and The Humber	-11%	-7%	-9%	-5%	-1%	3%	5%	5%	0%	2%
	East Midlands	-11%	-9%	-11%	-7%	-6%	-3%	-0%	2%	0%	1%
	West Midlands	-13%	-9%	-10%	-5%	-1%	3%	3%	3%	0%	1%
	East of England	-11%	-7%	-10%	-6%	-4%	-1%	2%	3%	0%	3%
	London	-30%	-25%	-25%	-20%	-17%	-10%	-6%	-2%	0%	5%
	South East	-15%	-13%	-14%	-12%	-10%	-5%	-2%	-1%	0%	0%
	South West	-10%	-5%	-11%	-8%	-6%	0%	0%	2%	0%	-2%
	(England total)	-14%	-10%	-13%	-9%	-6%	-2%	0%	1%	0%	2%
	Scotland	-0%	-5%	-4%	-4%	-2%	-1%	0%	0%	0%	-4%
	Northern Ireland	9%	7%	1%	9%	6%	5%	7%	7%	0%	-0%
	Wales	-4%	-8%	-4%	-5%	-1%	3%	5%	2%	0%	-2%
	UK	-12%	-9%	-11%	-8%	-6%	-2%	1%	2%	0%	1%

Note: The percentage change is not recorded in the above table for groups with fewer than 10 placed applicants in that cycle or in the 2018 cycle.

## R.8 Placed 18 year old applicants by region of domicile: 6 days after A level results day

Placed 18 year old applicants: absolute change relative to 2018 cycle totals

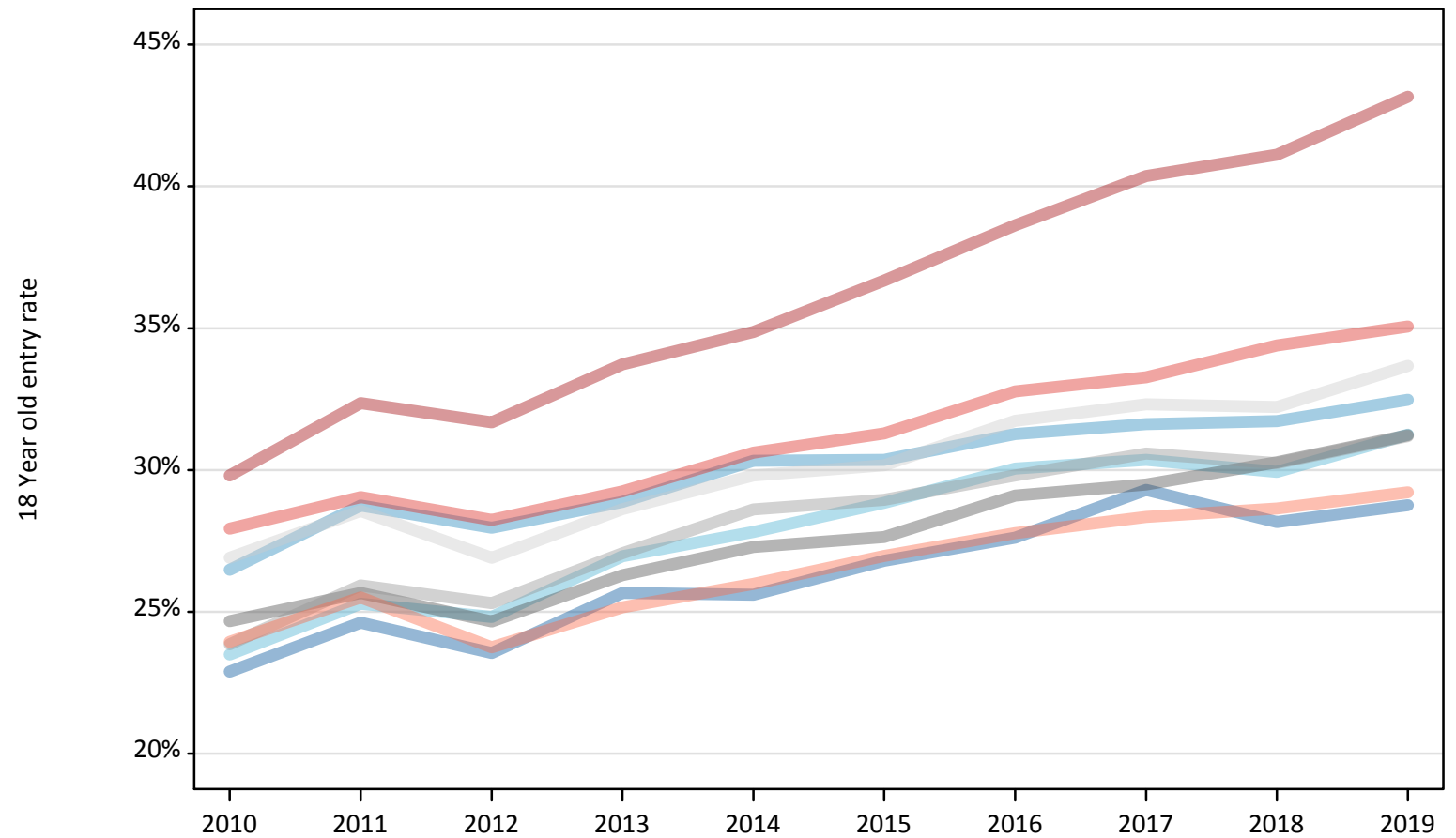
Applicant Status	Domicile	2010	2011	2012	2013	2014	2015	2016	2017	2018	2019
Placed	North East	-90	40	-470	40	-150	340	320	560	0	-90
	North West	-450	370	-790	-520	290	1,060	720	720	0	80
	Yorkshire and The Humber	-1,930	-1,230	-1,660	-860	-130	530	900	890	0	350
	East Midlands	-1,690	-1,410	-1,800	-1,150	-920	-510	-40	240	0	100
	West Midlands	-2,590	-1,820	-2,020	-1,100	-300	520	610	560	0	160
	East of England	-2,520	-1,530	-2,250	-1,360	-820	-240	510	650	0	680
	London	-11,420	-9,290	-9,550	-7,470	-6,290	-3,930	-2,390	-850	0	1,920
	South East	-5,150	-4,600	-4,910	-4,280	-3,440	-1,850	-550	-230	0	140
	South West	-1,680	-860	-1,830	-1,320	-1,000	60	40	310	0	-280
	(England total)	-27,530	-20,330	-25,270	-18,030	-12,760	-4,010	130	2,840	0	3,060
	Scotland	-60	-710	-640	-540	-320	-210	40	10	0	-560
	Northern Ireland	700	550	70	670	450	370	570	500	0	-20
	Wales	-430	-800	-400	-480	-120	320	470	150	0	-190
	UK	-27,320	-21,280	-26,230	-18,380	-12,750	-3,520	1,200	3,500	0	2,290



## R.9 Placed 18 year old applicants by region of domicile: 6 days after A level results day

Placed 18 year old applicants: entry rate

- North East
- North West
- Yorkshire and The Humber
- East Midlands
- West Midlands
- East of England
- London
- South East
- South West



## R.10 Placed 18 year old applicants by region of domicile: 6 days after A level results day

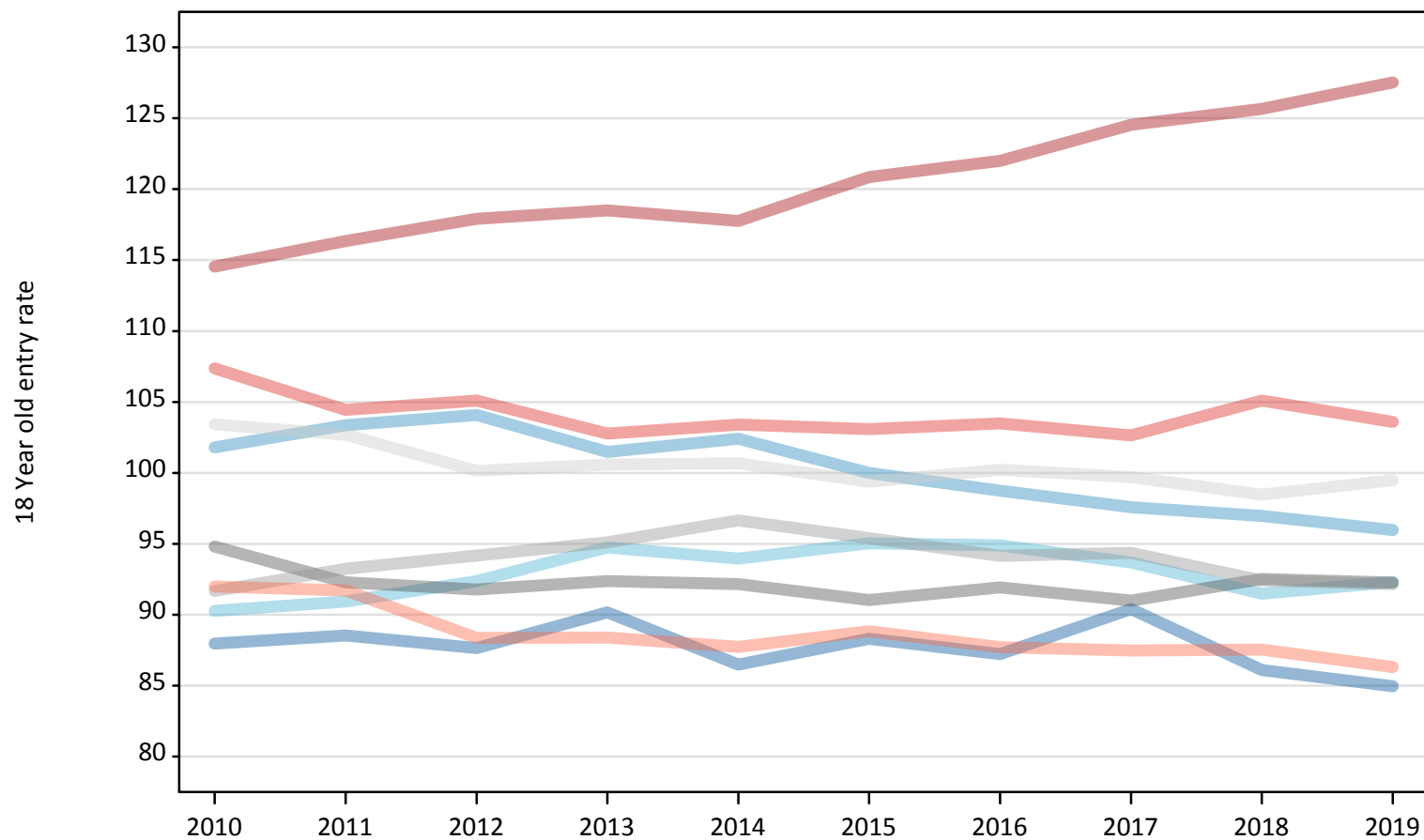
Placed 18 year old applicants: entry rate

Applicant Status	Domicile	2010	2011	2012	2013	2014	2015	2016	2017	2018	2019
Placed	North East	22.9%	24.6%	23.5%	25.7%	25.6%	26.8%	27.6%	29.3%	28.2%	28.8%
	North West	26.5%	28.7%	28.0%	28.9%	30.3%	30.4%	31.3%	31.6%	31.7%	32.5%
	Yorkshire and The Humber	23.5%	25.3%	24.8%	27.0%	27.8%	28.8%	30.0%	30.4%	29.9%	31.2%
	East Midlands	24.7%	25.7%	24.7%	26.3%	27.3%	27.6%	29.1%	29.5%	30.3%	31.2%
	West Midlands	23.9%	25.9%	25.3%	27.1%	28.6%	28.9%	29.8%	30.6%	30.2%	31.2%
	East of England	26.9%	28.6%	26.9%	28.6%	29.8%	30.2%	31.7%	32.3%	32.2%	33.7%
	London	29.8%	32.4%	31.7%	33.7%	34.9%	36.7%	38.6%	40.4%	41.1%	43.2%
	South East	27.9%	29.0%	28.2%	29.2%	30.6%	31.3%	32.8%	33.3%	34.4%	35.1%
	South West	23.9%	25.5%	23.7%	25.2%	26.0%	27.0%	27.8%	28.3%	28.6%	29.2%
	(England total)	26.0%	27.8%	26.9%	28.5%	29.6%	30.4%	31.7%	32.4%	32.7%	33.8%
	Scotland	22.7%	22.1%	22.5%	22.8%	23.3%	23.9%	24.8%	25.4%	26.2%	26.0%
	Northern Ireland	32.4%	32.5%	30.4%	33.6%	33.1%	32.0%	33.3%	33.4%	32.7%	33.7%
	Wales	23.9%	23.7%	24.8%	25.1%	26.2%	27.3%	28.7%	28.5%	28.9%	29.1%
	UK	25.9%	27.3%	26.5%	28.0%	29.0%	29.7%	31.0%	31.7%	32.0%	33.0%

### R.11 Placed 18 year old applicants by region of domicile: 6 days after A level results day

Placed 18 year old applicants: entry rates (indexed to 100 = England)

- North East
- North West
- Yorkshire and The Humber
- East Midlands
- West Midlands
- East of England
- London
- South East
- South West



## R.12 Placed 18 year old applicants by region of domicile: 6 days after A level results day

Placed 18 year old applicants: entry rate (indexed to 100 = England)

Applicant Status	Domicile	2010	2011	2012	2013	2014	2015	2016	2017	2018	2019
Placed	North East	88	89	88	90	86	88	87	90	86	85
	North West	102	103	104	101	102	100	99	98	97	96
	Yorkshire and The Humber	90	91	92	95	94	95	95	94	91	92
	East Midlands	95	92	92	92	92	91	92	91	93	92
	West Midlands	92	93	94	95	97	95	94	94	92	92
	East of England	103	103	100	101	101	99	100	100	98	99
	London	115	116	118	119	118	121	122	125	126	128
	South East	107	104	105	103	103	103	103	103	105	104
	South West	92	92	88	88	88	89	88	87	88	86
	(England total)	100	100	100	100	100	100	100	100	100	100