

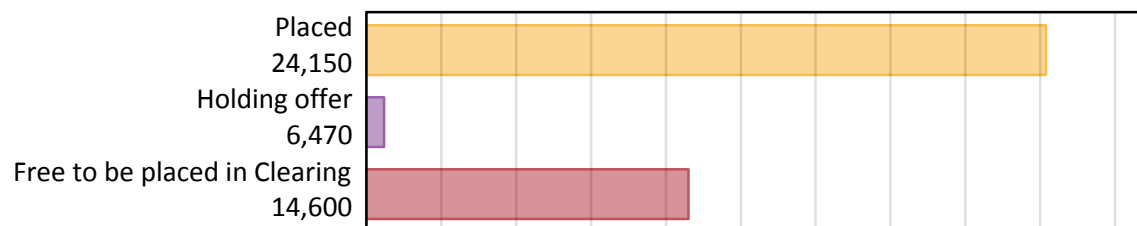
# Daily Clearing Analysis: Overview

## B7 Nursing analysis at 00:05 on Wednesday 21 August 2019 (6 days after A level results day)

### AB.1 Placed applicants to nursing from all domiciles, 2019 cycle

Applicant type	Status	2019
Main scheme	Placed (Clearing)	940
	Placed (Adjustment)	10
	Placed (Firm)	21,320
	Placed (Insurance)	510
	Placed (Other)	1,110
	Holding offer	6,470
	Free to be placed in Clearing	14,600
Direct to Clearing	Placed (Direct to Clearing)	270
	Other (Direct to Clearing)	490
All applicants	Placed	24,150

### AB.2 Summary of nursing applicants who are placed, holding offers or free to be placed in Clearing ( all domiciles )



### AB.3 Placed applicants to nursing from all domiciles: 6 days after A level results day

Placed applicants to nursing: difference between cycle and 2018 cycle



Note: The percentage change is not plotted in the above chart for groups with fewer than 30 placed applicants in any one cycle.

#### AB.4 Placed applicants to nursing from all domiciles: 6 days after A level results day

Placed applicants to nursing: applicants at 6 days after A level results day

Applicant type	Status	2010	2011	2012	2013	2014	2015	2016	2017	2018	2019
All applicants	Placed	22,990	20,210	19,930	20,690	22,800	22,780	24,470	23,540	23,160	24,150

#### AB.5 Placed applicants to nursing from all domiciles: 6 days after A level results day

Placed applicants to nursing: difference between cycle and 2018 cycle

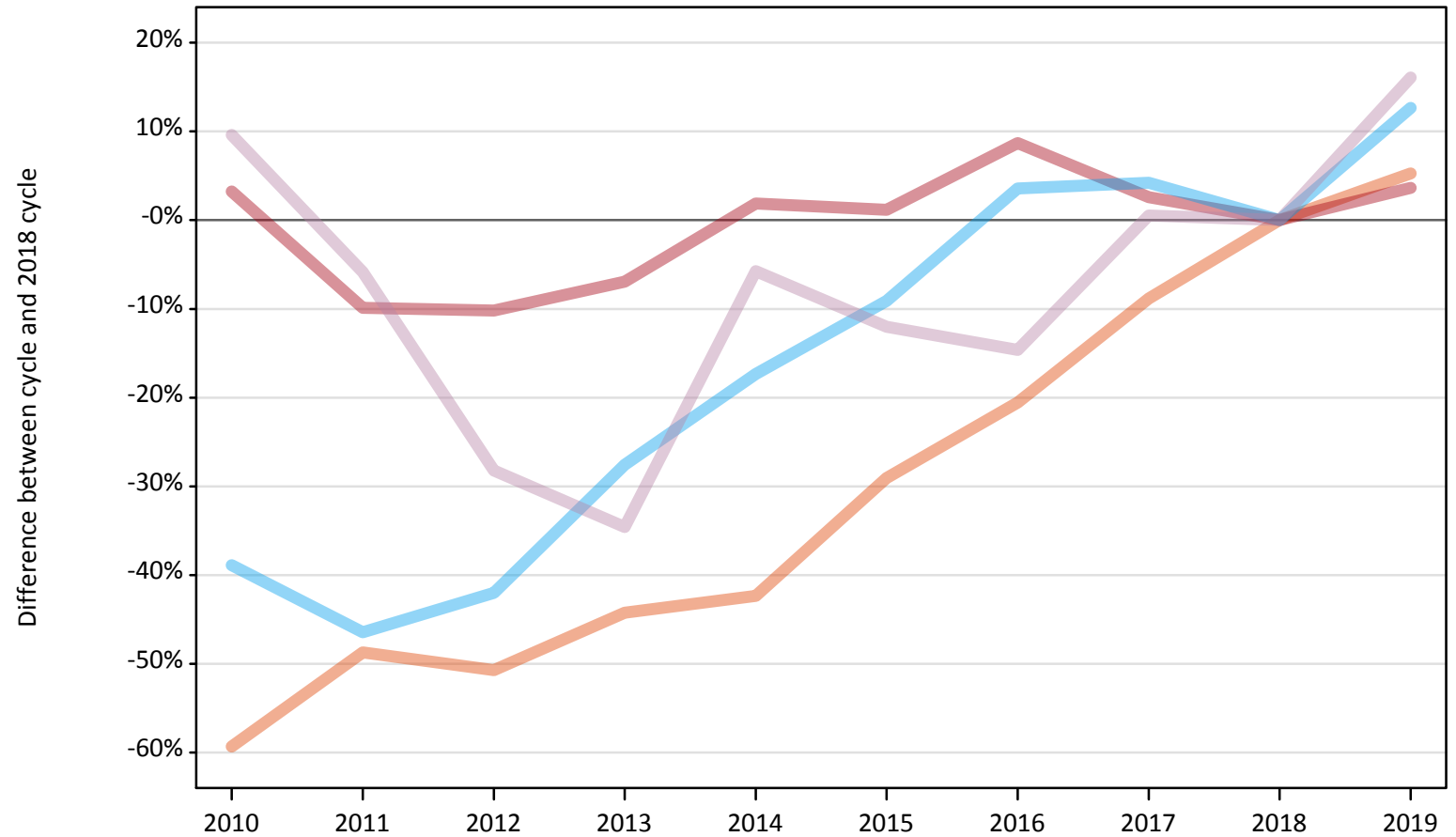
Applicant type	Status	2010	2011	2012	2013	2014	2015	2016	2017	2018	2019
All applicants	Placed	-1%	-13%	-14%	-11%	-2%	-2%	6%	2%	0%	4%

Note: The percentage change is not recorded in the above table for groups with fewer than 10 placed applicants in that cycle or in the 2018 cycle.

## AB.6 Placed main scheme applicants to nursing from all domiciles: 6 days after A level results day

All Main scheme placed routes (excluding Adjustment): difference between cycle and 2018 cycle

- Placed (Clearing)
- Placed (Firm)
- Placed (Insurance)
- Placed (Other)



Note: The percentage change is not plotted in the above chart for groups with fewer than 30 placed applicants in any one cycle.

**AB.7 Placed main scheme applicants to nursing from all domiciles: 6 days after A level results day**

All Main scheme placed routes (excluding Adjustment): applicants at 6 days after A level results day

Applicant type	Status	2010	2011	2012	2013	2014	2015	2016	2017	2018	2019
Main scheme	Placed (Clearing)	360	460	440	500	520	640	710	820	900	940
	Placed (Firm)	21,240	18,540	18,480	19,140	20,960	20,810	22,360	21,110	20,570	21,320
	Placed (Insurance)	280	240	260	330	370	410	470	470	450	510
	Placed (Other)	1,050	900	690	630	900	840	820	960	960	1,110

**AB.8 Placed main scheme applicants to nursing from all domiciles: 6 days after A level results day**

All Main scheme placed routes (excluding Adjustment): difference between cycle and 2018 cycle

Applicant type	Status	2010	2011	2012	2013	2014	2015	2016	2017	2018	2019
Main scheme	Placed (Clearing)	-59%	-49%	-51%	-44%	-42%	-29%	-21%	-9%	0%	5%
	Placed (Firm)	3%	-10%	-10%	-7%	2%	1%	9%	3%	0%	4%
	Placed (Insurance)	-39%	-46%	-42%	-28%	-17%	-9%	4%	4%	0%	13%
	Placed (Other)	10%	-6%	-28%	-35%	-6%	-12%	-15%	1%	0%	16%

Note: The percentage change is not recorded in the above table for groups with fewer than 10 placed applicants in that cycle or in the 2018 cycle.

**AB.9 Main scheme applicants placed to nursing through adjustment: 6 days after A level results day**

Placed through adjustment: difference between cycle and 2018 cycle

**[This chart is not part of this report]**

**AB.10 Main scheme applicants placed to nursing through adjustment: 6 days after A level results day**

Placed through adjustment: applicants at 6 days after A level results day

Applicant type	Status	2010	2011	2012	2013	2014	2015	2016	2017	2018	2019
Main scheme	Placed (Adjustment)	0	0	0	10	10	10	0	20	10	10

**AB.11 Main scheme applicants placed to nursing through adjustment: 6 days after A level results day**

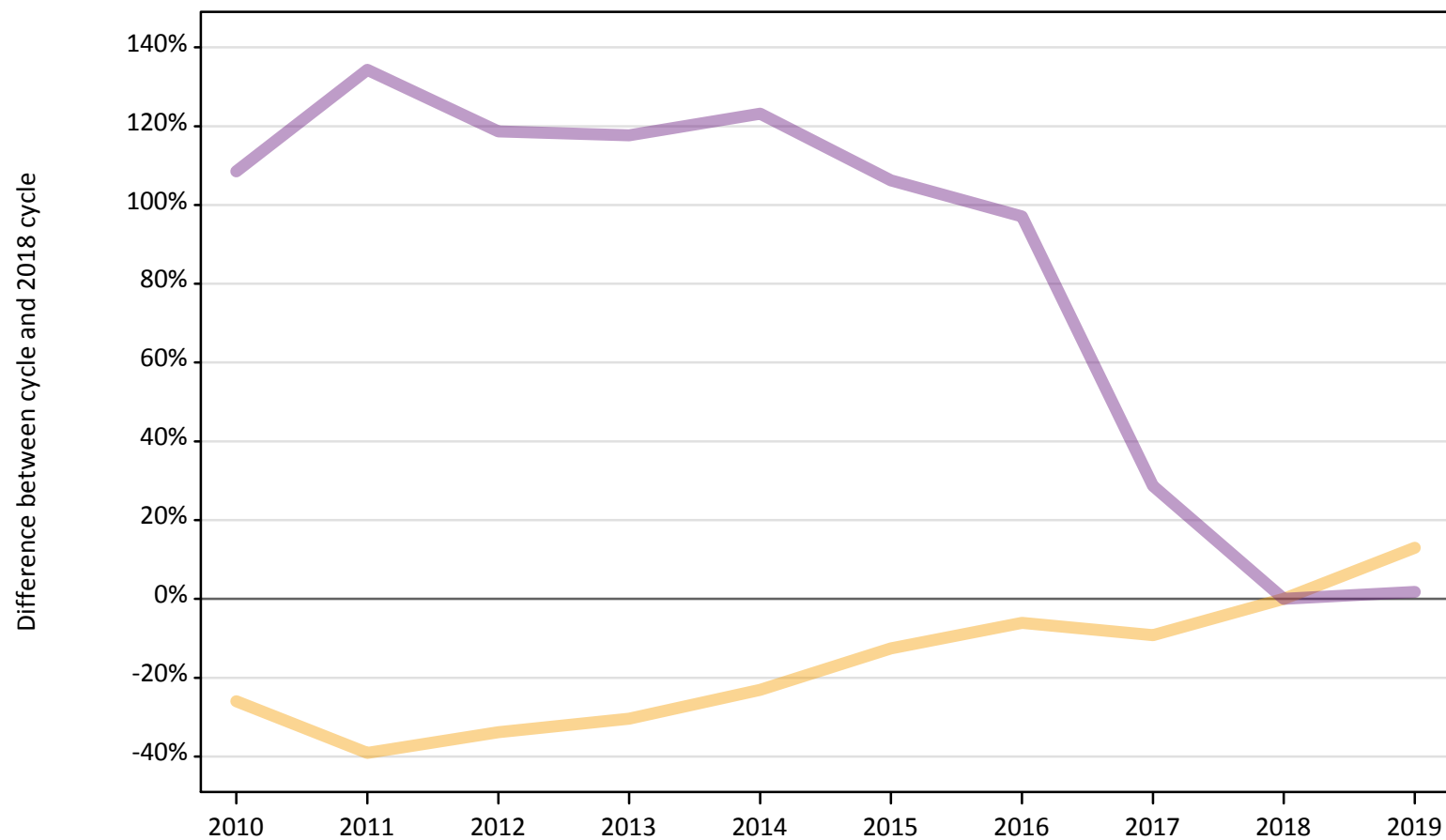
Placed through adjustment: difference between cycle and 2018 cycle

**[This table is not part of this report]**

## AB.12 Main scheme applicants to nursing not currently placed from all domiciles: 6 days after A level results day

Applicants in unplaced states: difference between cycle and 2018 cycle

— Holding offer  
— Free to be placed in Clearing



Note: The percentage change is not plotted in the above chart for groups with fewer than 30 unplaced applicants in any one cycle.

**AB.13 Main scheme applicants to nursing not currently placed from all domiciles: 6 days after A level results day**

Applicants in unplaced states: applicants at 6 days after A level results day

Applicant type	Status	2010	2011	2012	2013	2014	2015	2016	2017	2018	2019
Main scheme	Holding offer	4,240	3,490	3,790	3,990	4,400	5,010	5,380	5,200	5,720	6,470
	Free to be placed in Clearing	29,910	33,600	31,370	31,220	32,010	29,580	28,270	18,460	14,340	14,600

**AB.14 Main scheme applicants to nursing not currently placed from all domiciles: 6 days after A level results day**

Applicants in unplaced states: difference between cycle and 2018 cycle

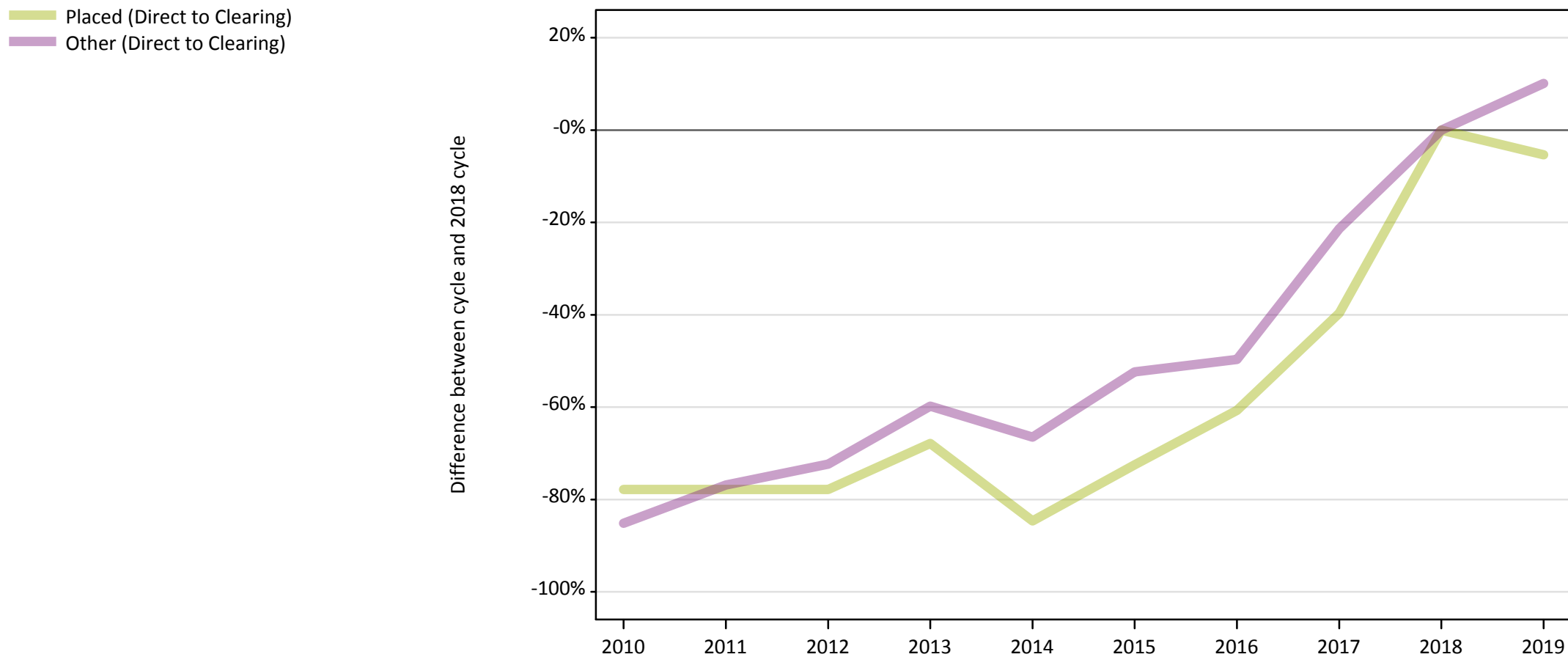
Applicant type	Status	2010	2011	2012	2013	2014	2015	2016	2017	2018	2019
Main scheme	Holding offer	-26%	-39%	-34%	-30%	-23%	-13%	-6%	-9%	0%	13%
	Free to be placed in Clearing	108%	134%	119%	118%	123%	106%	97%	29%	0%	2%

Note: The percentage change is not recorded in the above table for groups with fewer than 10 unplaced applicants in that cycle or in the 2018 cycle.



## AB.15 Direct to Clearing applicants from all domiciles: 6 days after A level results day

Direct to Clearing: difference between cycle and 2018 cycle



Note: The percentage change is not plotted in the above chart for groups with fewer than 30 placed applicants in any one cycle.

**AB.16 Direct to Clearing applicants from all domiciles: 6 days after A level results day**

Direct to Clearing 6 days after A level results day

Applicant type	Status	2010	2011	2012	2013	2014	2015	2016	2017	2018	2019
Direct to Clearing	Placed (Direct to Clearing)	60	60	60	90	40	80	110	170	280	270
	Other (Direct to Clearing)	70	100	120	180	150	210	220	350	450	490

**AB.17 Direct to Clearing applicants from all domiciles: 6 days after A level results day**

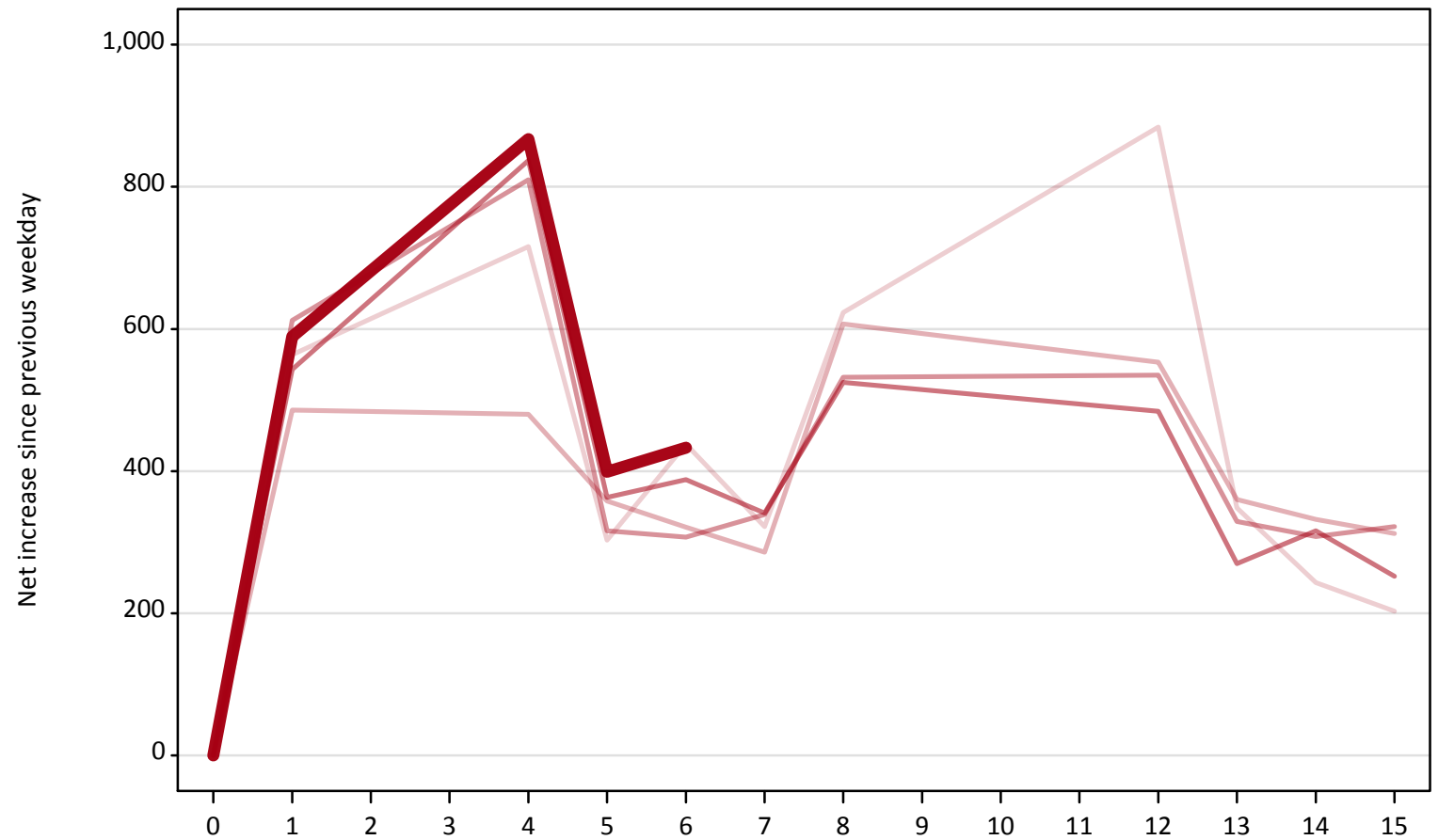
Direct to Clearing: difference between cycle and 2018 cycle

Applicant type	Status	2010	2011	2012	2013	2014	2015	2016	2017	2018	2019
Direct to Clearing	Placed (Direct to Clearing)	-78%	-78%	-78%	-68%	-85%	-73%	-61%	-40%	0%	-5%
	Other (Direct to Clearing)	-85%	-77%	-72%	-60%	-67%	-52%	-50%	-21%	0%	10%

Note: The percentage change is not recorded in the above table for groups with fewer than 10 placed applicants in that cycle or in the 2018 cycle.

**AB.18 All Placed: Daily net change (from all domiciles)**  
Net increase since previous weekday (2019 cycle up to 6 days after A level results day)

- 2015
- 2016
- 2017
- 2018
- 2019**

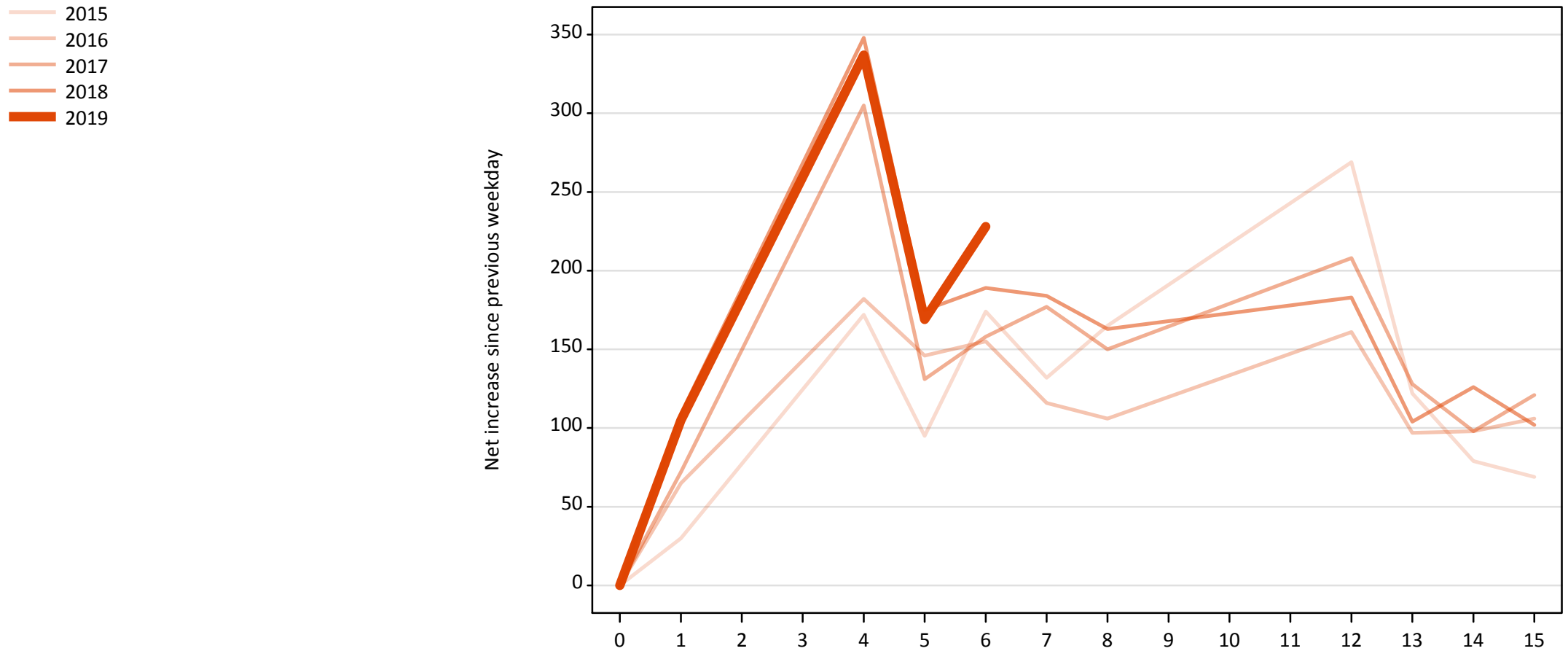


**AB.19 All Placed: Daily net change (from all domiciles)**

Net increase since previous weekday (2019 cycle up to 6 days after A level results day)

Applicant status, days since A level results day	2015	2016	2017	2018	2019	
All Placed	0	0	0	0	0	
	1	560	490	610	540	590
	4	720	480	810	840	870
	5	300	360	320	360	400
	6	440	320	310	390	430
	7	320	290	340	340	
	8	620	610	530	530	
	12	880	550	540	480	
	13	350	360	330	270	
	14	240	330	310	320	
	15	200	310	320	250	

**AB.20 Placed through Clearing only: Daily net change (from all domiciles)**  
Net increase since previous weekday (2019 cycle up to 6 days after A level results day)



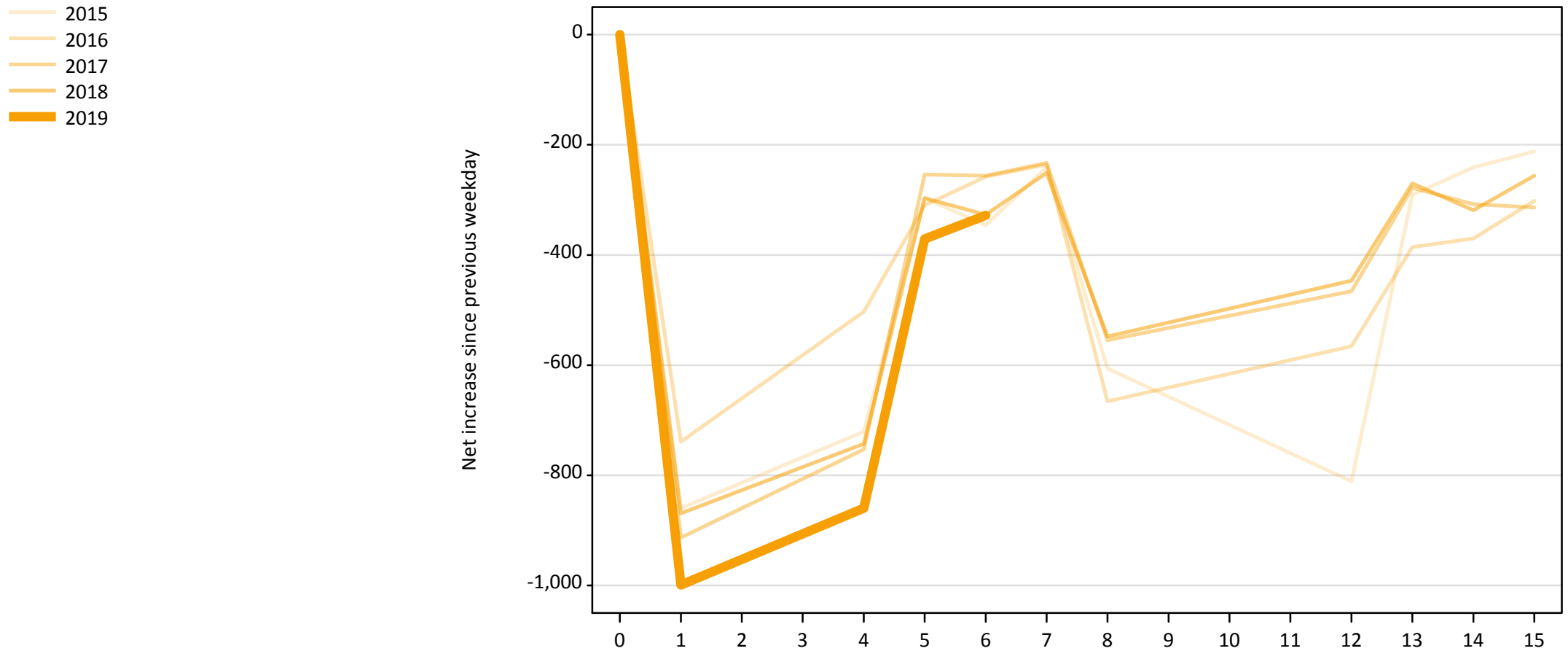
**AB.21 Placed through Clearing only: Daily net change (from all domiciles)**

Net increase since previous weekday (2019 cycle up to 6 days after A level results day)

Applicant status, days since A level results day		2015	2016	2017	2018	2019
Placed through Clearing only	0	0	0	0	0	0
	1	30	70	70	110	110
	4	170	180	310	350	340
	5	100	150	130	180	170
	6	170	160	160	190	230
	7	130	120	180	180	
	8	170	110	150	160	
	12	270	160	210	180	
	13	120	100	130	100	
	14	80	100	100	130	
	15	70	110	120	100	

## AB.22 Holding Offer: Daily net change (from all domiciles)

Net increase since previous weekday (2019 cycle up to 6 days after A level results day)



**AB.23 Holding Offer: Daily net change (from all domiciles)**

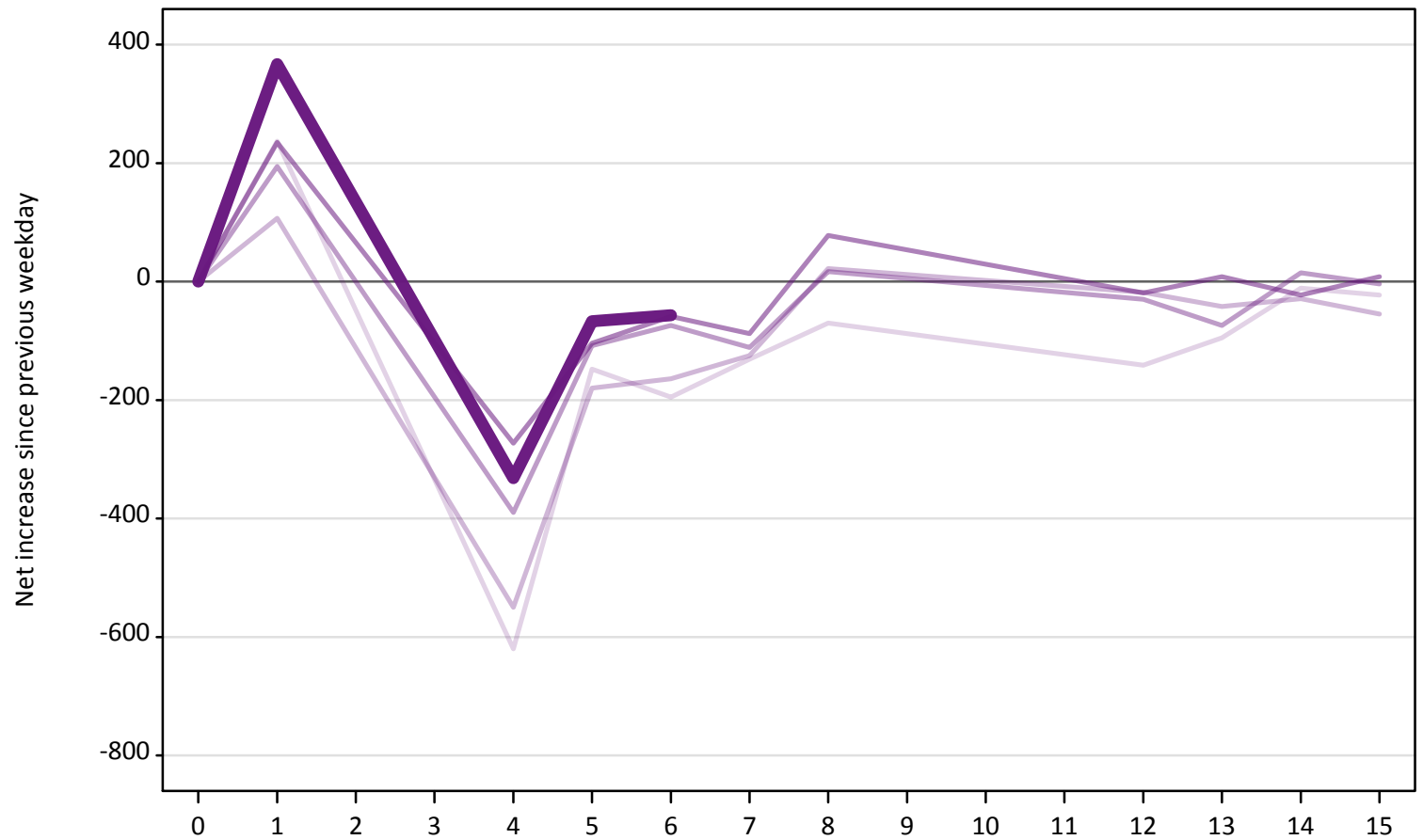
Net increase since previous weekday (2019 cycle up to 6 days after A level results day)

Applicant status, days since A level results day		2015	2016	2017	2018	2019
Holding Offer	0	0	0	0	0	0
	1	-860	-740	-910	-870	-1,000
	4	-720	-500	-750	-740	-860
	5	-300	-310	-250	-300	-370
	6	-350	-260	-260	-330	-330
	7	-240	-240	-230	-250	
	8	-610	-670	-560	-550	
	12	-810	-570	-470	-450	
	13	-290	-390	-280	-270	
	14	-240	-370	-310	-320	
	15	-210	-300	-310	-260	



**AB.24 Free to be placed in Clearing: Daily net change (from all domiciles)**  
Net increase since previous weekday (2019 cycle up to 6 days after A level results day)

- 2015
- 2016
- 2017
- 2018
- 2019



**AB.25 Free to be placed in Clearing: Daily net change (from all domiciles)**  
 Net increase since previous weekday (2019 cycle up to 6 days after A level results day)

Applicant status, days since A level results day		2015	2016	2017	2018	2019
Free to be placed in Clearing	0	0	0	0	0	0
	1	240	110	190	240	370
	4	-620	-550	-390	-270	-330
	5	-150	-180	-110	-100	-70
	6	-200	-160	-70	-60	-60
	7	-130	-130	-110	-90	
	8	-70	20	20	80	
	12	-140	-20	-30	-20	
	13	-100	-40	-70	10	
	14	-10	-30	20	-20	
	15	-20	-60	0	10	