

# Daily Clearing Analysis: Country

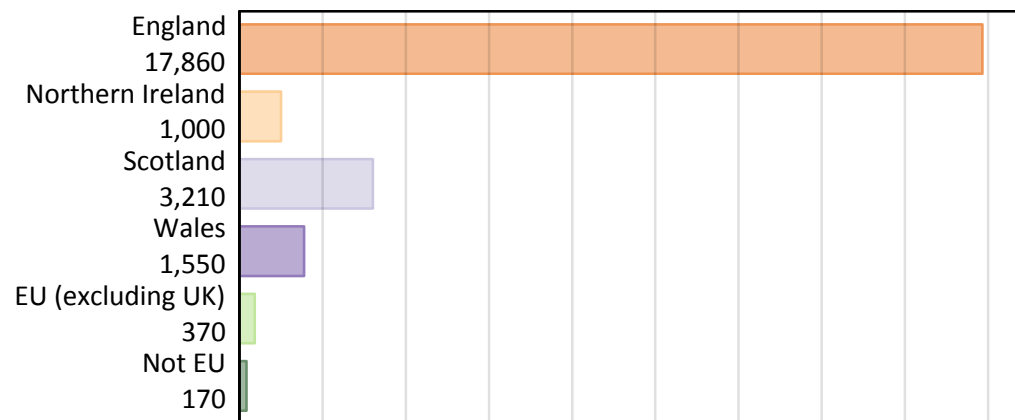
## B7 Nursing analysis at 00:05 on Wednesday 21 August 2019 (6 days after A level results day)

### BB.1 Placed applicants to nursing by country of provider and domicile, 2019 cycle

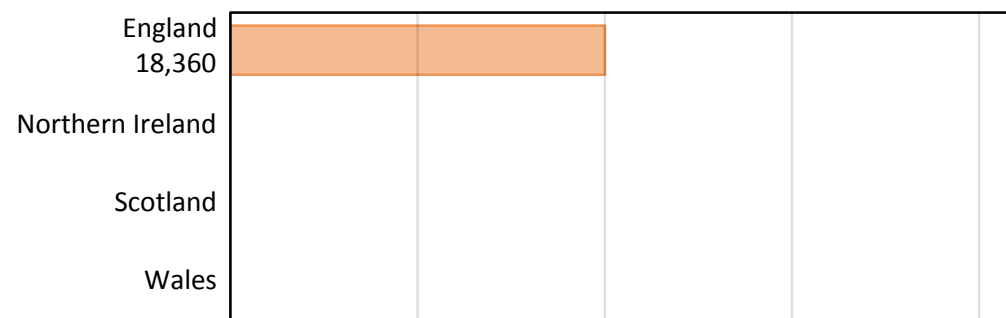
Domicile of applicant	Country of provider				
	England	Northern Ireland	Scotland	Wales	UK
England	17,620				17,860
Northern Ireland	150				1,000
Scotland	20				3,210
Wales	300				1,550
EU (excluding UK)	130				370
Not EU	150				170
All	18,360				24,150

Note that figures for providers in Northern Ireland, Scotland, and Wales are not reported here.

### BB.2 Placed applicants to nursing by domicile group



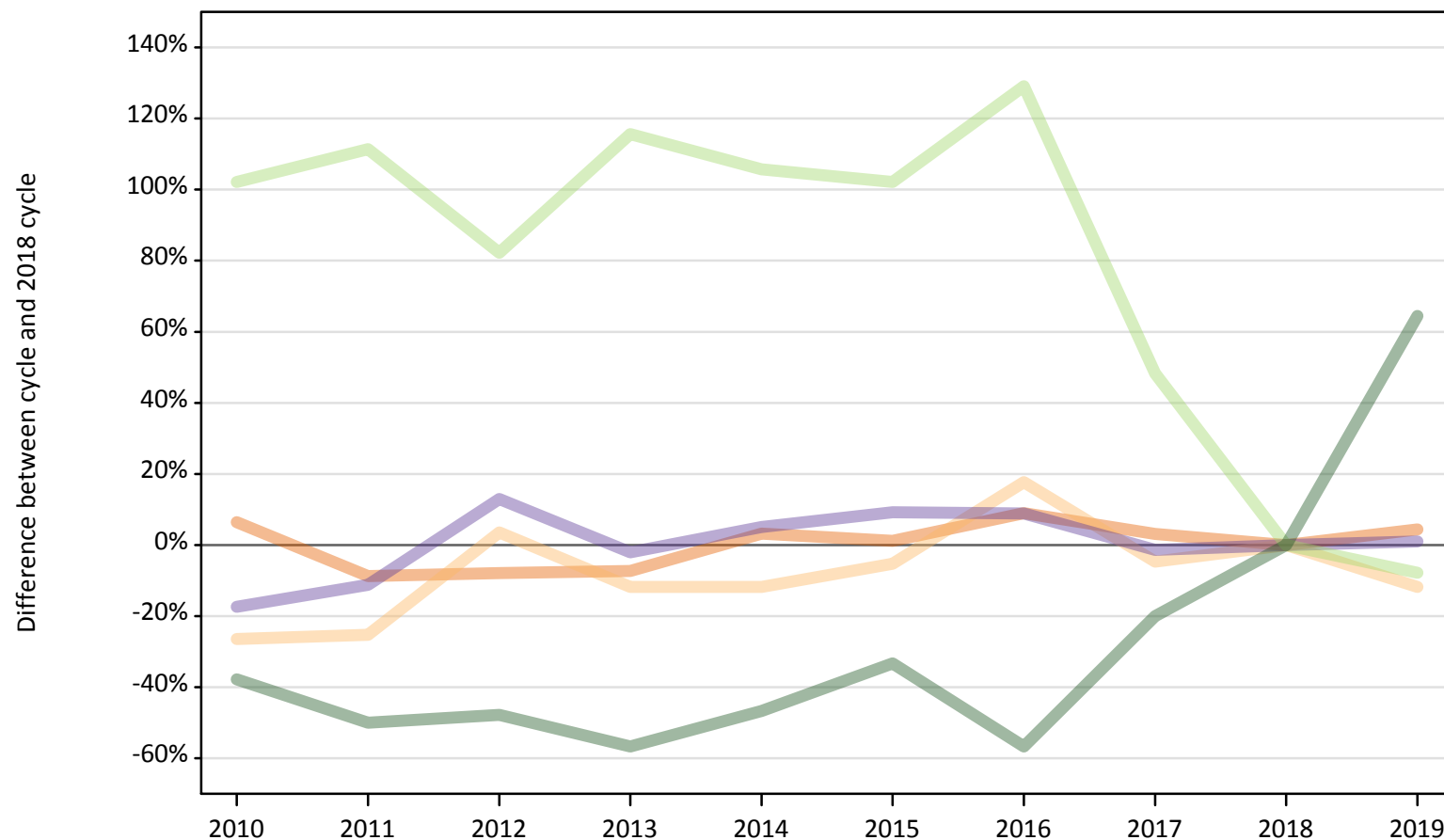
### BB.3 Placed applicants to nursing by country of provider



Note that figures for providers in Northern Ireland, Scotland, and Wales are not reported here.

**BB.4 Placed applicants to nursing at 6 days after A level results day: providers in England**  
 Selected applicant domiciles: difference between cycle and 2018 cycle (at 6 days after A level results day)

- England
- Northern Ireland
- Scotland
- Wales
- EU (excluding UK)
- Not EU



Note: The percentage change is not plotted in the above chart for groups with fewer than 30 placed applicants in any one cycle.

**BB.5 Placed applicants to nursing at 6 days after A level results day: providers in England**

Placed applicants to nursing by domicile (at 6 days after A level results day)

Domicile of applicant	2010	2011	2012	2013	2014	2015	2016	2017	2018	2019
England	17,960	15,400	15,550	15,640	17,410	17,070	18,390	17,400	16,880	17,620
Northern Ireland	130	130	180	150	150	160	200	160	170	150
Scotland	30	30	40	20	40	30	30	20	20	20
Wales	240	260	330	290	310	320	320	290	290	300
EU (excluding UK)	290	300	260	300	290	290	320	210	140	130
Not EU	60	50	50	40	50	60	40	70	90	150

**BB.6 Placed applicants to nursing at 6 days after A level results day: providers in England**

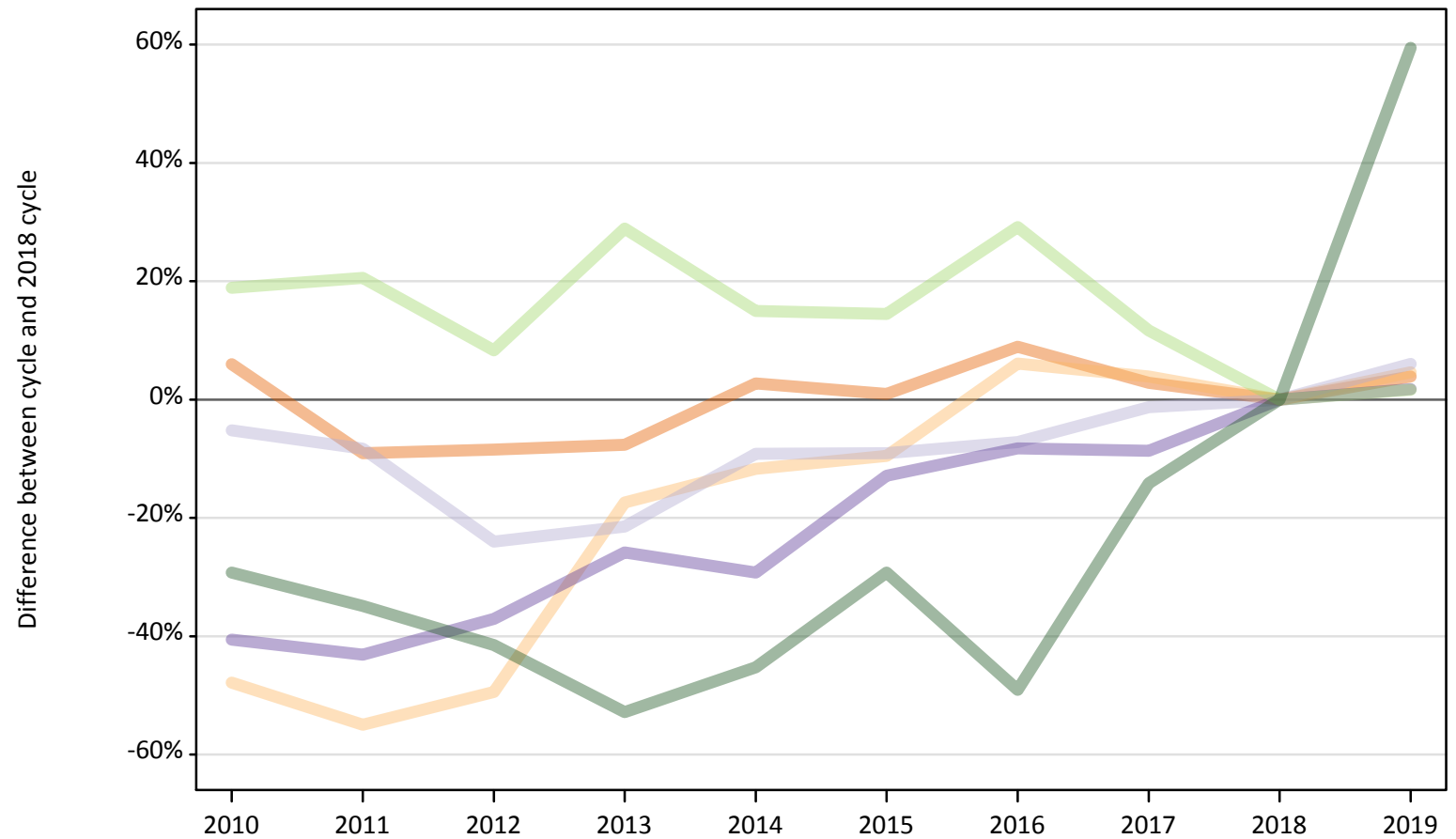
Selected applicant domiciles: difference between cycle and 2018 cycle (at 6 days after A level results day)

Domicile of applicant	2010	2011	2012	2013	2014	2015	2016	2017	2018	2019
England	6%	-9%	-8%	-7%	3%	1%	9%	3%	0%	4%
Northern Ireland	-26%	-25%	4%	-12%	-12%	-5%	18%	-5%	0%	-12%
Scotland	113%	81%	150%	31%	131%	69%	81%	31%	0%	6%
Wales	-17%	-11%	13%	-2%	5%	9%	9%	-1%	0%	1%
EU (excluding UK)	102%	111%	82%	116%	106%	102%	129%	48%	0%	-8%
Not EU	-38%	-50%	-48%	-57%	-47%	-33%	-57%	-20%	0%	64%

Note: The percentage change is not recorded in the above table for groups with fewer than 10 placed applicants in that cycle or in the 2018 cycle.

**BB.7 Placed applicants to nursing at 6 days after A level results day: providers in the UK**  
Selected applicant domiciles: difference between cycle and 2018 cycle (at 6 days after A level results day)

- England
- Northern Ireland
- Scotland
- Wales
- EU (excluding UK)
- Not EU



Note: The percentage change is not plotted in the above chart for groups with fewer than 30 placed applicants in any one cycle.

**BB.8 Placed applicants to nursing at 6 days after A level results day: providers in the UK**

Placed applicants to nursing by domicile (at 6 days after A level results day)

Domicile of applicant	2010	2011	2012	2013	2014	2015	2016	2017	2018	2019
England	18,220	15,630	15,740	15,880	17,660	17,350	18,730	17,680	17,190	17,860
Northern Ireland	500	430	480	790	840	860	1,010	990	960	1,000
Scotland	2,870	2,770	2,300	2,380	2,750	2,750	2,810	2,990	3,030	3,210
Wales	900	870	960	1,130	1,080	1,330	1,400	1,390	1,520	1,550
EU (excluding UK)	430	430	390	460	410	410	470	400	360	370
Not EU	80	70	60	50	60	80	50	90	110	170

**BB.9 Placed applicants to nursing at 6 days after A level results day: providers in the UK**

Selected applicant domiciles: difference between cycle and 2018 cycle (at 6 days after A level results day)

Domicile of applicant	2010	2011	2012	2013	2014	2015	2016	2017	2018	2019
England	6%	-9%	-8%	-8%	3%	1%	9%	3%	0%	4%
Northern Ireland	-48%	-55%	-49%	-17%	-12%	-10%	6%	4%	0%	5%
Scotland	-5%	-8%	-24%	-21%	-9%	-9%	-7%	-1%	0%	6%
Wales	-41%	-43%	-37%	-26%	-29%	-13%	-8%	-9%	0%	2%
EU (excluding UK)	19%	21%	8%	29%	15%	14%	29%	12%	0%	2%
Not EU	-29%	-35%	-42%	-53%	-45%	-29%	-49%	-14%	0%	59%

Note: The percentage change is not recorded in the above table for groups with fewer than 10 placed applicants in that cycle or in the 2018 cycle.