

B7 Nursing analysis at 00:05 on Wednesday 21 August 2019 (6 days after A level results day)

CB.1 Placed applicants to nursing by country of domicile and age group, 2019 cycle (6 days after A level results day)

Domicile of applicant	Age group				
	17 and under	18	19	20 to 24	25 and over
England	0	4,710	2,150	3,860	7,150
Northern Ireland	0	320	180	230	270
Scotland	20	660	330	740	1,460
Wales	0	320	210	370	650
UK	30	6,000	2,870	5,200	9,530

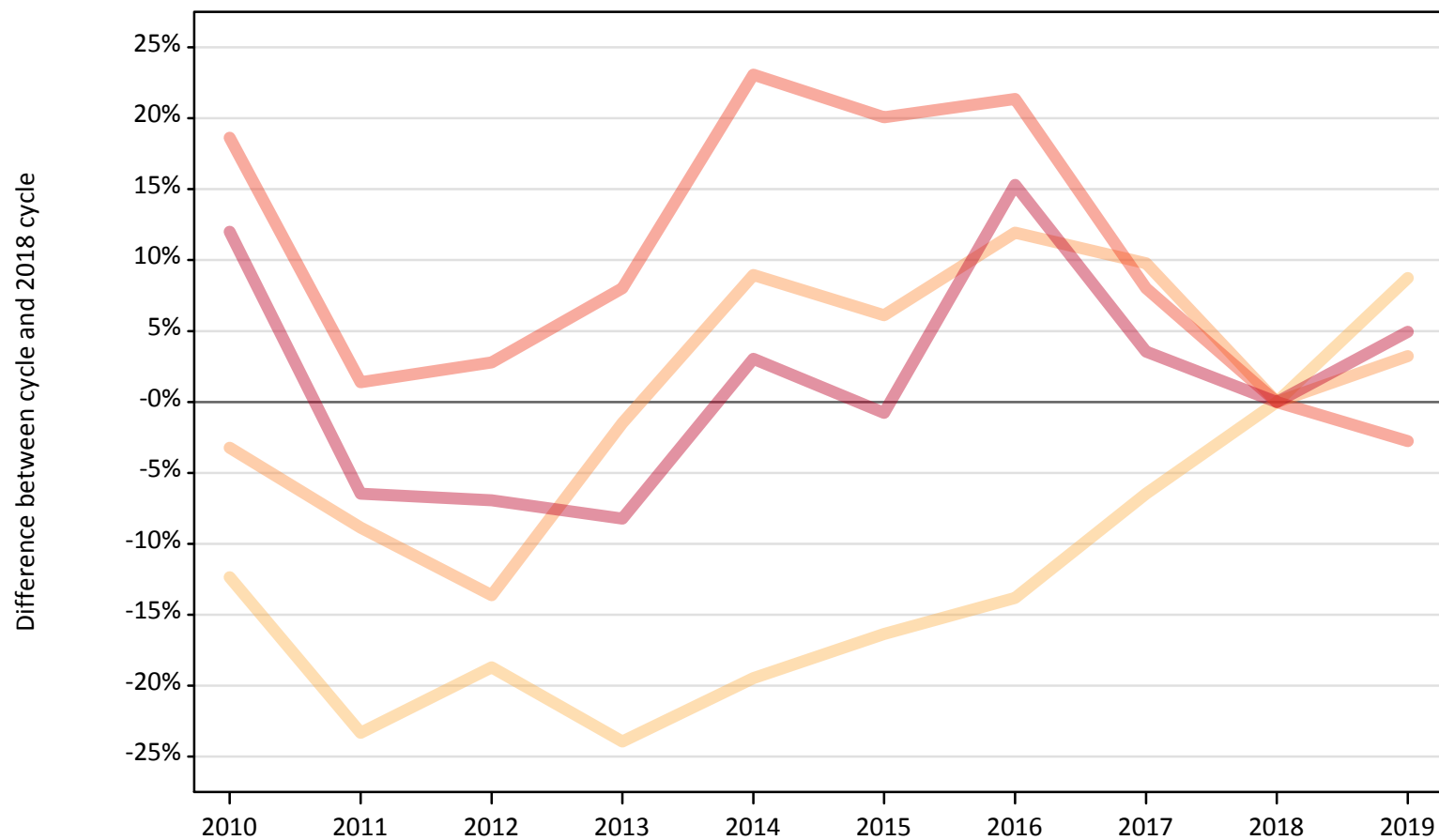
CB.2 Proportion of 18 year old population placed to nursing by country of domicile, 2019 cycle (6 days after A level results day)

Domicile of applicant	Age group	2019
England	18	0.8%
Northern Ireland	18	1.4%
Scotland	18	1.2%
Wales	18	0.9%

CB.3 Placed applicants to nursing from England by age group at 6 days after A level results day

Selected age groups: difference between cycle and 2018 cycle

- 17 and under
- 18
- 19
- 20 to 24
- 25 and over



Note: The percentage change is not plotted in the above chart for groups with fewer than 30 placed applicants in any one cycle.

CB.4 Placed applicants to nursing from England by age group at 6 days after A level results day

All age groups

Domicile of applicant	Age group	2010	2011	2012	2013	2014	2015	2016	2017	2018	2019
England	17 and under	80	20	0	0	10	0	0	10	10	0
	18	3,790	3,320	3,520	3,290	3,490	3,620	3,730	4,050	4,330	4,710
	19	2,010	1,890	1,800	2,050	2,260	2,210	2,330	2,280	2,080	2,150
	20 to 24	4,710	4,020	4,080	4,290	4,880	4,760	4,820	4,290	3,970	3,860
	25 and over	7,630	6,370	6,340	6,250	7,020	6,760	7,860	7,060	6,810	7,150

CB.5 Placed applicants to nursing from England by age group at 6 days after A level results day

Selected age groups: difference between cycle and 2018 cycle

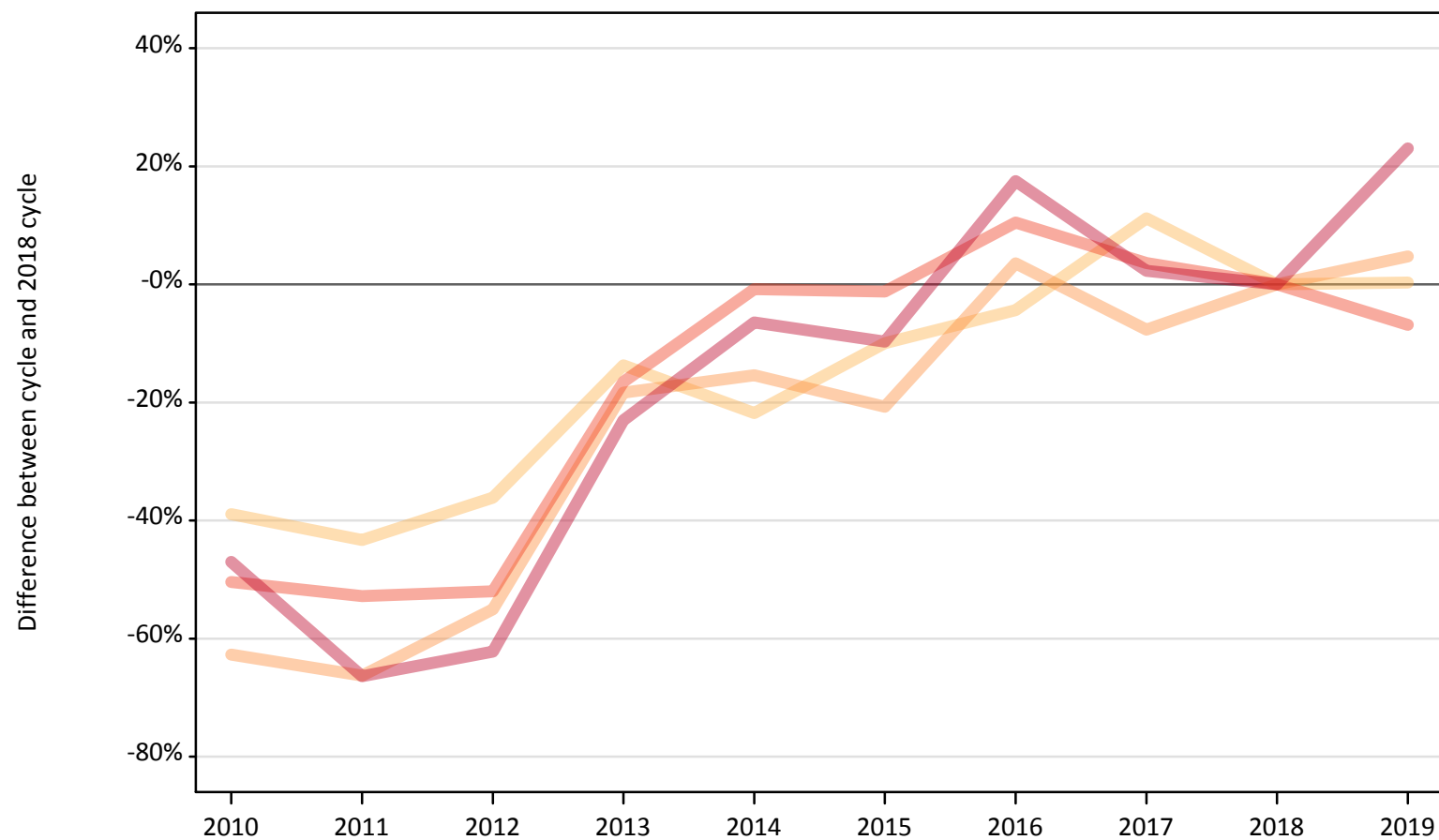
Domicile of applicant	Age group	2010	2011	2012	2013	2014	2015	2016	2017	2018	2019
England	17 and under										
	18	-12%	-23%	-19%	-24%	-19%	-16%	-14%	-6%	0%	9%
	19	-3%	-9%	-14%	-1%	9%	6%	12%	10%	0%	3%
	20 to 24	19%	1%	3%	8%	23%	20%	21%	8%	0%	-3%
	25 and over	12%	-6%	-7%	-8%	3%	-1%	15%	4%	0%	5%

Note: The percentage change is not recorded in the above table for groups with fewer than 10 placed applicants in that cycle or in the 2018 cycle.

CB.6 Placed applicants to nursing from Northern Ireland by age group at 6 days after A level results day

Selected age groups: difference between cycle and 2018 cycle

- 17 and under
- 18
- 19
- 20 to 24
- 25 and over



Note: The percentage change is not plotted in the above chart for groups with fewer than 30 placed applicants in any one cycle.

CB.7 Placed applicants to nursing from Northern Ireland by age group at 6 days after A level results day

All age groups

Domicile of applicant	Age group	2010	2011	2012	2013	2014	2015	2016	2017	2018	2019
Northern Ireland	17 and under	0	0	0	0	0	0	0	0	0	0
	18	200	180	210	280	250	290	310	360	320	320
	19	60	60	80	140	140	130	180	160	170	180
	20 to 24	120	120	120	210	250	250	270	260	250	230
	25 and over	120	70	80	170	200	200	260	220	220	270

CB.8 Placed applicants to nursing from Northern Ireland by age group at 6 days after A level results day

Selected age groups: difference between cycle and 2018 cycle

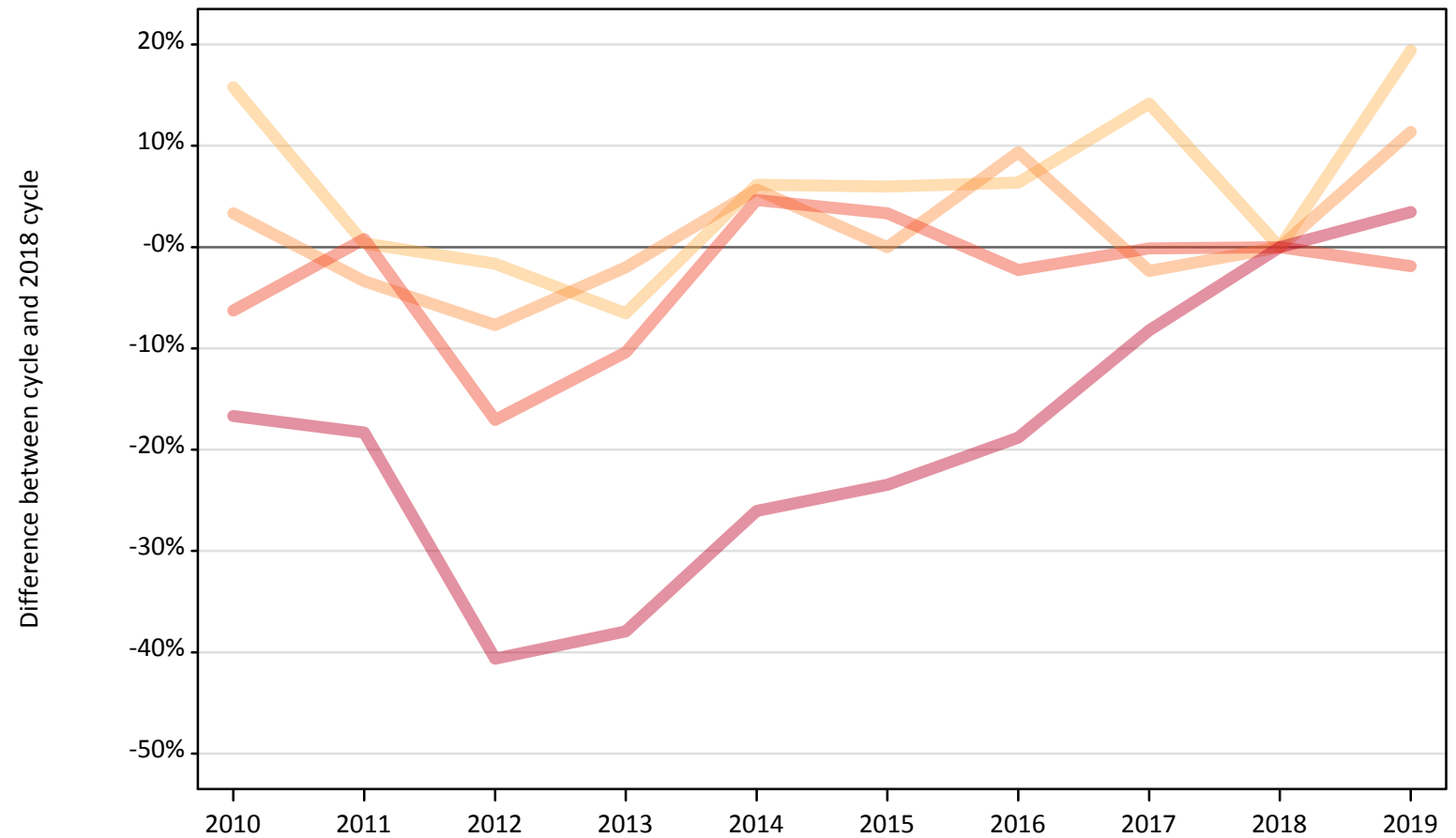
Domicile of applicant	Age group	2010	2011	2012	2013	2014	2015	2016	2017	2018	2019
Northern Ireland	17 and under										
	18	-39%	-43%	-36%	-14%	-22%	-10%	-4%	11%	0%	0%
	19	-63%	-66%	-55%	-18%	-15%	-21%	4%	-8%	0%	5%
	20 to 24	-50%	-53%	-52%	-17%	-1%	-1%	10%	4%	0%	-7%
	25 and over	-47%	-66%	-62%	-23%	-6%	-10%	18%	2%	0%	23%

Note: The percentage change is not recorded in the above table for groups with fewer than 10 placed applicants in that cycle or in the 2018 cycle.

CB.9 Placed applicants to nursing from Scotland by age group at 6 days after A level results day

Selected age groups: difference between cycle and 2018 cycle

- 17 and under
- 18
- 19
- 20 to 24
- 25 and over



Note: The percentage change is not plotted in the above chart for groups with fewer than 30 placed applicants in any one cycle.

CB.10 Placed applicants to nursing from Scotland by age group at 6 days after A level results day

All age groups

Domicile of applicant	Age group	2010	2011	2012	2013	2014	2015	2016	2017	2018	2019
Scotland	17 and under	40	20	20	20	20	10	20	20	10	20
	18	640	550	540	520	590	580	590	630	550	660
	19	310	290	280	290	320	300	330	290	300	330
	20 to 24	700	760	620	670	790	780	730	750	750	740
	25 and over	1,180	1,150	840	880	1,040	1,080	1,150	1,290	1,410	1,460

CB.11 Placed applicants to nursing from Scotland by age group at 6 days after A level results day

Selected age groups: difference between cycle and 2018 cycle

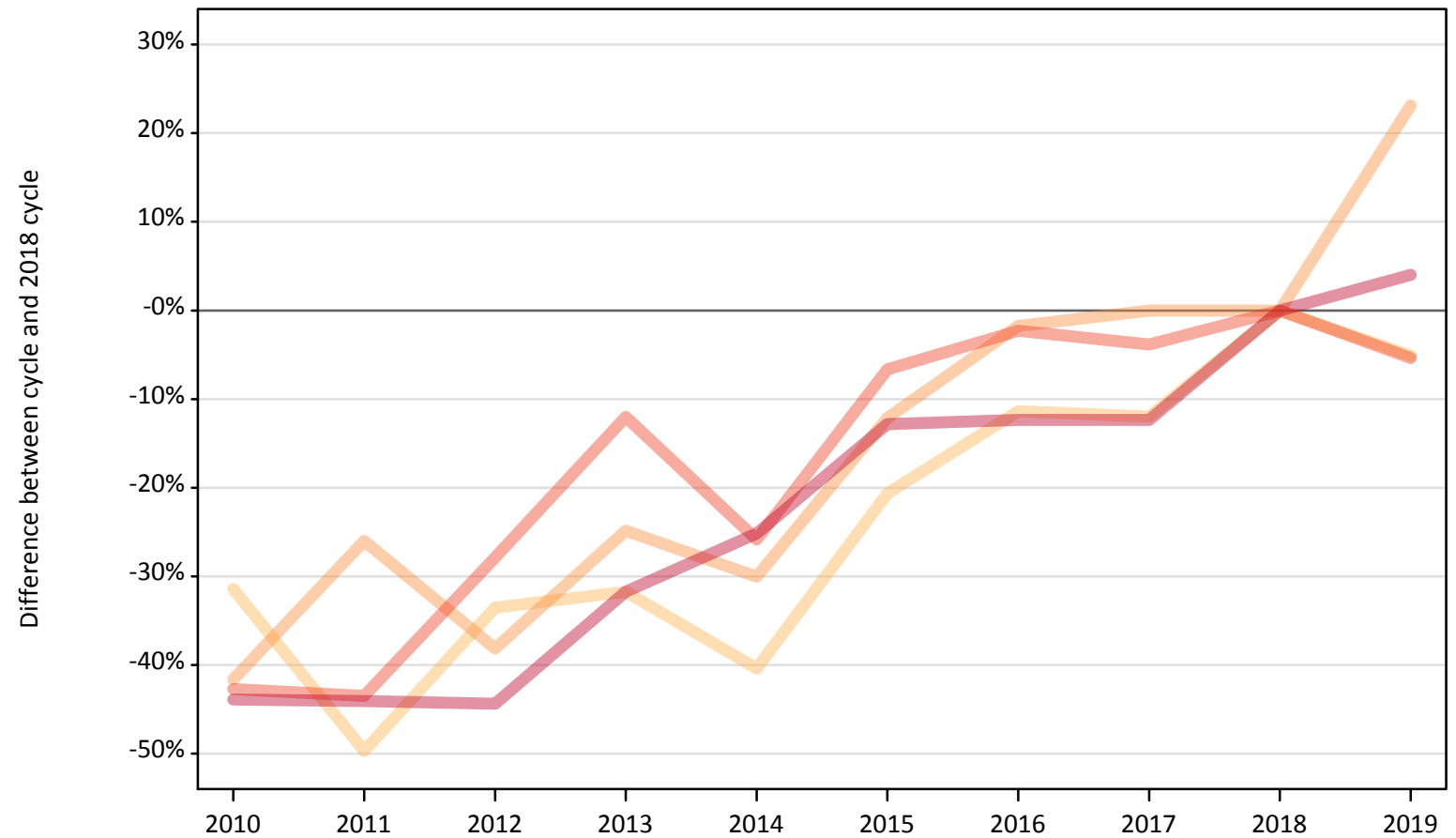
Domicile of applicant	Age group	2010	2011	2012	2013	2014	2015	2016	2017	2018	2019
Scotland	17 and under	193%	64%	50%	43%	21%	-14%	14%	50%	0%	50%
	18	16%	0%	-2%	-7%	6%	6%	6%	14%	0%	19%
	19	3%	-3%	-8%	-2%	6%	0%	9%	-2%	0%	11%
	20 to 24	-6%	1%	-17%	-10%	5%	3%	-2%	-0%	0%	-2%
	25 and over	-17%	-18%	-41%	-38%	-26%	-23%	-19%	-8%	0%	3%

Note: The percentage change is not recorded in the above table for groups with fewer than 10 placed applicants in that cycle or in the 2018 cycle.

CB.12 Placed applicants to nursing from Wales by age group at 6 days after A level results day

Selected age groups: difference between cycle and 2018 cycle

- 17 and under
- 18
- 19
- 20 to 24
- 25 and over



Note: The percentage change is not plotted in the above chart for groups with fewer than 30 placed applicants in any one cycle.

CB.13 Placed applicants to nursing from Wales by age group at 6 days after A level results day

All age groups

Domicile of applicant	Age group	2010	2011	2012	2013	2014	2015	2016	2017	2018	2019
Wales	17 and under	0	0	0	0	0	0	0	0	0	0
	18	230	170	220	230	200	270	300	290	330	320
	19	100	130	110	130	120	150	170	170	170	210
	20 to 24	220	220	280	340	290	370	380	380	390	370
	25 and over	350	350	350	430	470	540	550	550	620	650

CB.14 Placed applicants to nursing from Wales by age group at 6 days after A level results day

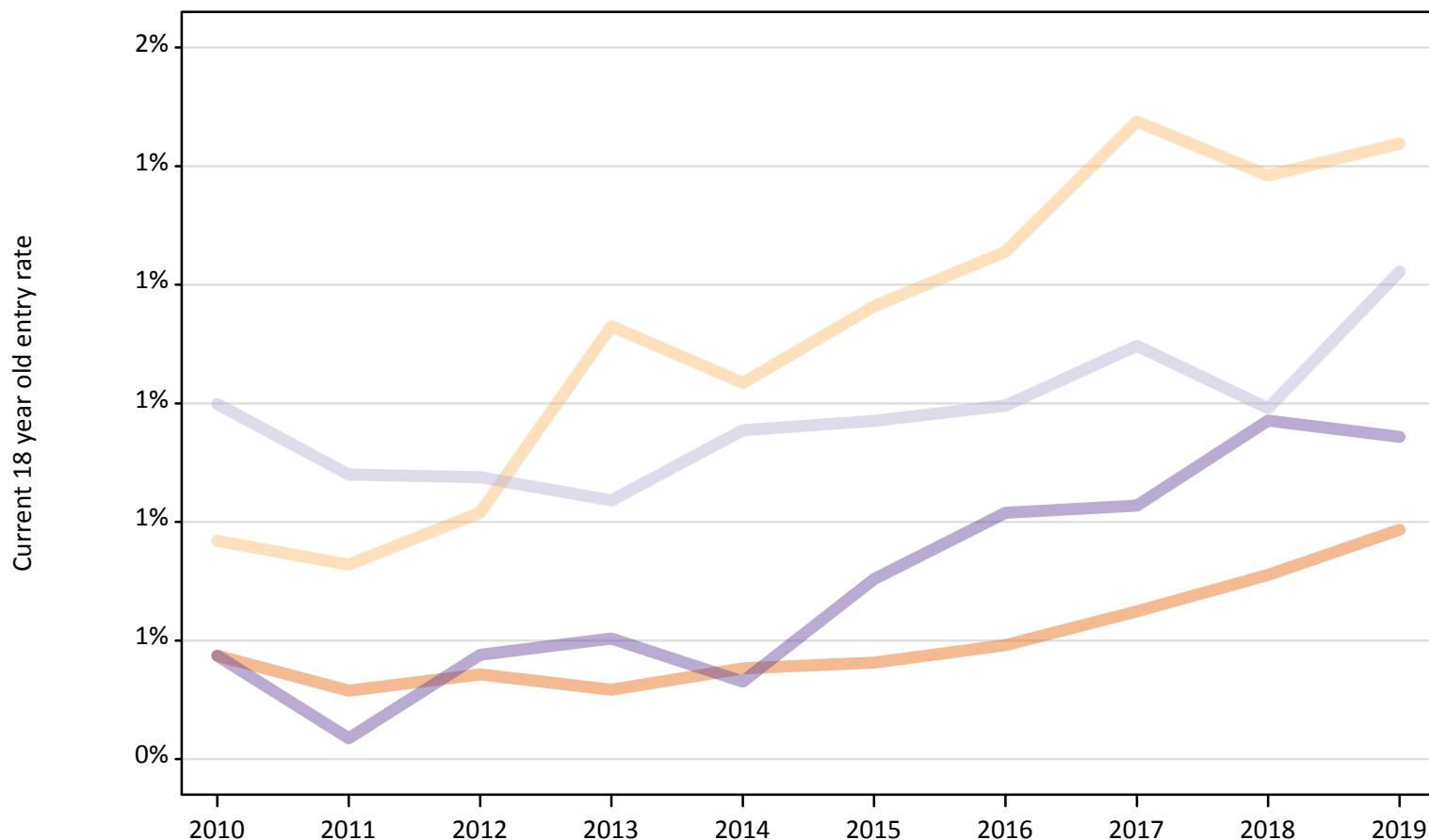
Selected age groups: difference between cycle and 2018 cycle

Domicile of applicant	Age group	2010	2011	2012	2013	2014	2015	2016	2017	2018	2019
Wales	17 and under										
	18	-31%	-50%	-34%	-32%	-40%	-21%	-11%	-12%	0%	-5%
	19	-42%	-26%	-38%	-25%	-30%	-12%	-2%	0%	0%	23%
	20 to 24	-43%	-43%	-28%	-12%	-26%	-7%	-2%	-4%	0%	-5%
	25 and over	-44%	-44%	-44%	-32%	-25%	-13%	-12%	-12%	0%	4%

Note: The percentage change is not recorded in the above table for groups with fewer than 10 placed applicants in that cycle or in the 2018 cycle.

CB.15 Entry rates to nursing for 18 year olds by UK country of domicile: 6 days after A level results day

Placed 18 year old applicants as a proportion of the 18 year old population



CB.16 Entry rates to nursing for 18 year olds by UK country of domicile: 6 days after A level results day

Placed 18 year old applicants as a proportion of the 18 year old population

Domicile of applicant	Age group	2010	2011	2012	2013	2014	2015	2016	2017	2018	2019
England	18	0.6%	0.5%	0.5%	0.5%	0.6%	0.6%	0.6%	0.6%	0.7%	0.8%
Northern Ireland	18	0.8%	0.7%	0.8%	1.1%	1.0%	1.2%	1.3%	1.5%	1.4%	1.4%
Scotland	18	1.0%	0.9%	0.9%	0.8%	1.0%	1.0%	1.0%	1.1%	1.0%	1.2%
Wales	18	0.6%	0.4%	0.6%	0.6%	0.5%	0.7%	0.8%	0.8%	1.0%	0.9%