

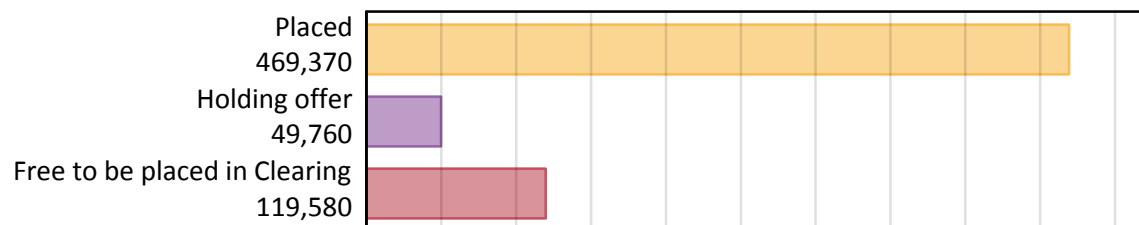
Daily Clearing Analysis: Overview

Analysis at 00:05 on Thursday 22 August 2019 (7 days after A level results day)

A.1 Applicants by type and status from all domiciles, 2019 cycle

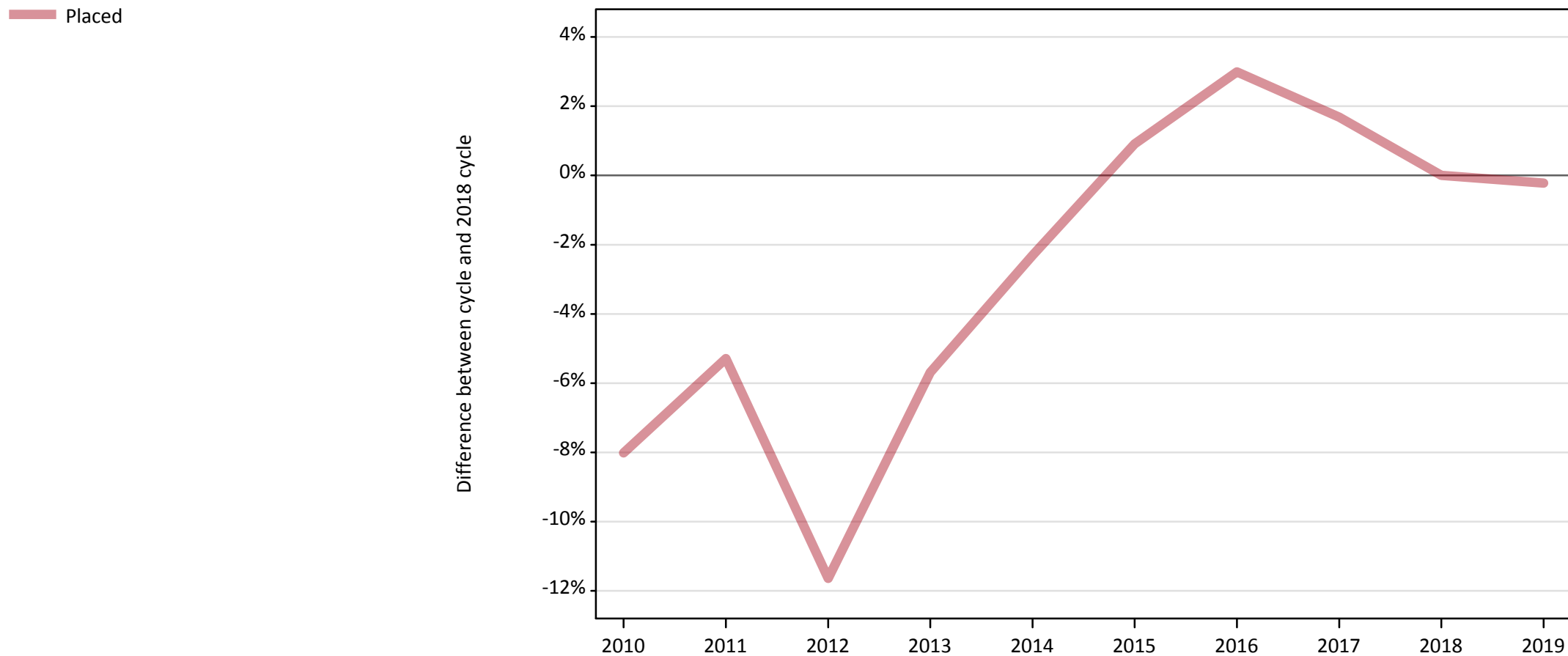
Applicant type	Status	2019
Main scheme	Placed (Clearing)	41,480
	Placed (Adjustment)	600
	Placed (Firm)	371,680
	Placed (Insurance)	33,270
	Placed (Other)	13,290
	Holding offer	49,760
	Free to be placed in Clearing	119,580
Direct to Clearing	Placed (Direct to Clearing)	9,060
	Other (Direct to Clearing)	8,790
All applicants	Placed	469,370

A.2 Summary of applicants who are placed, holding offers or free to be placed in Clearing (all domiciles)



A.3 All placed applicants from all domiciles: 7 days after A level results day

All placed applicants: difference between cycle and 2018 cycle



Note: The percentage change is not plotted in the above chart for groups with fewer than 30 placed applicants in any one cycle.

A.4 All placed applicants from all domiciles: 7 days after A level results day

All placed applicants: applicants at 7 days after A level results day

Applicant type	Status	2010	2011	2012	2013	2014	2015	2016	2017	2018	2019
All applicants	Placed	432,710	445,500	415,650	443,640	459,550	474,680	484,480	478,310	470,410	469,370

A.5 All placed applicants from all domiciles: 7 days after A level results day

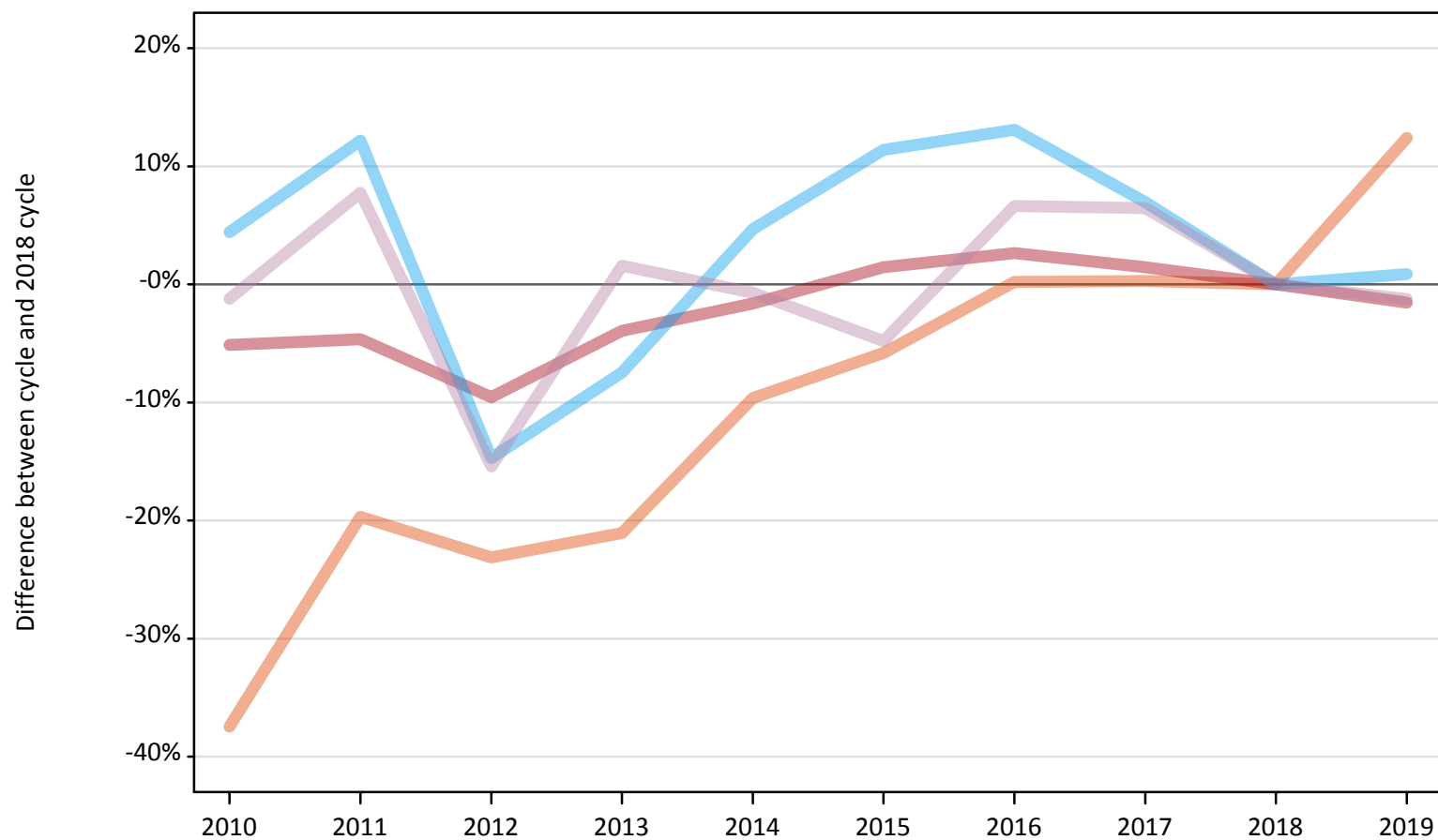
All placed applicants: difference between cycle and 2018 cycle

Applicant type	Status	2010	2011	2012	2013	2014	2015	2016	2017	2018	2019
All applicants	Placed	-8%	-5%	-12%	-6%	-2%	1%	3%	2%	0%	-0%

Note: The percentage change is not recorded in the above table for groups with fewer than 10 placed applicants in that cycle or in the 2018 cycle.

A.6 Placed main scheme applicants from all domiciles: 7 days after A level results day
All Main scheme placed routes (excluding Adjustment): difference between cycle and 2018 cycle

- Placed (Clearing)
- Placed (Firm)
- Placed (Insurance)
- Placed (Other)



Note: The percentage change is not plotted in the above chart for groups with fewer than 30 placed applicants in any one cycle.

A.7 Placed main scheme applicants from all domiciles: 7 days after A level results day

All Main scheme placed routes (excluding Adjustment): applicants at 7 days after A level results day

Applicant type	Status	2010	2011	2012	2013	2014	2015	2016	2017	2018	2019
Main scheme	Placed (Clearing)	23,080	29,640	28,370	29,130	33,350	34,760	36,980	37,010	36,910	41,480
	Placed (Firm)	358,170	360,040	341,530	362,750	371,460	383,020	387,600	383,020	377,560	371,680
	Placed (Insurance)	34,440	36,990	28,130	30,520	34,520	36,730	37,290	35,270	32,980	33,270
	Placed (Other)	13,290	14,490	11,380	13,660	13,360	12,800	14,340	14,320	13,450	13,290

A.8 Placed main scheme applicants from all domiciles: 7 days after A level results day

All Main scheme placed routes (excluding Adjustment): difference between cycle and 2018 cycle

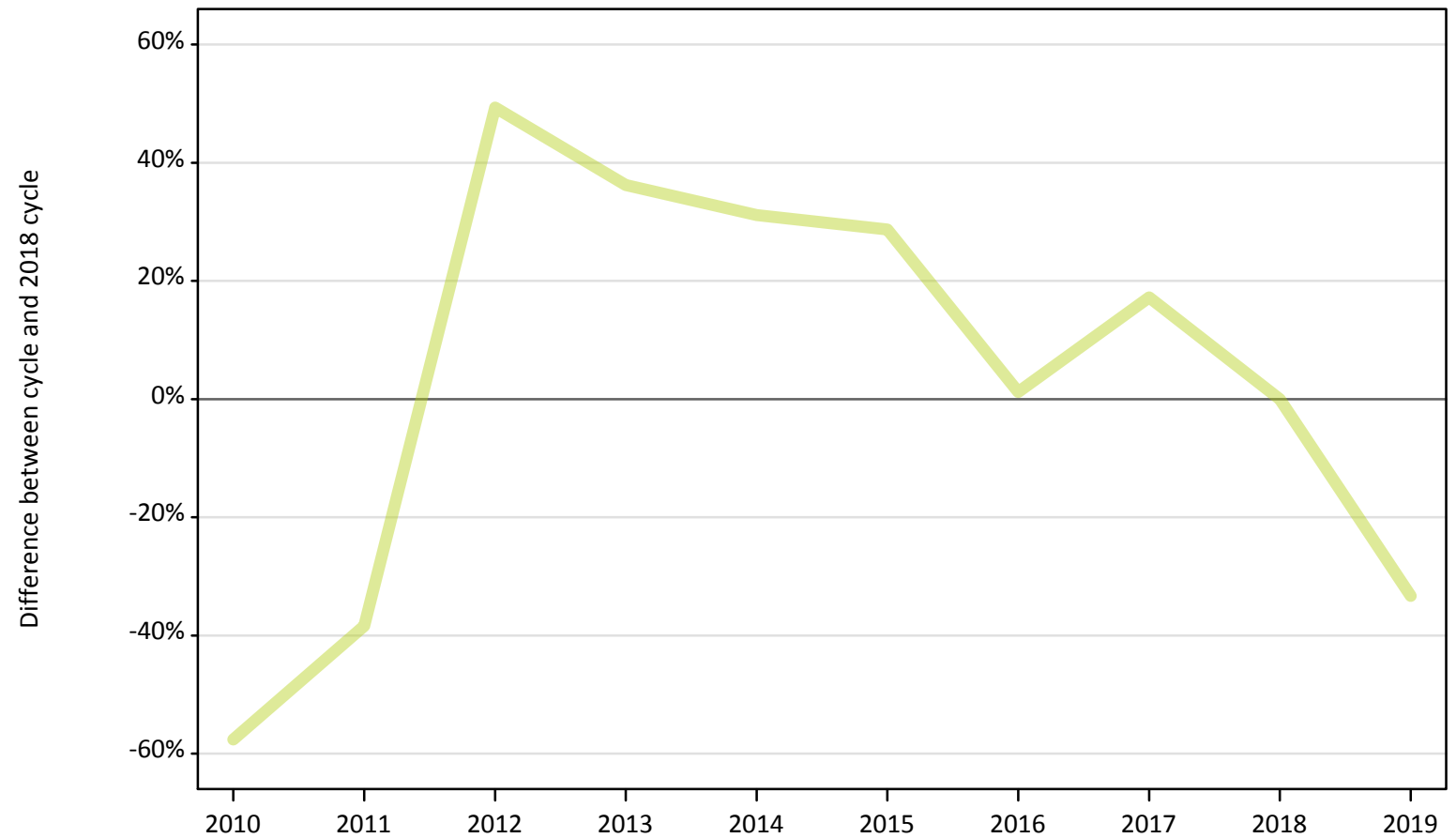
Applicant type	Status	2010	2011	2012	2013	2014	2015	2016	2017	2018	2019
Main scheme	Placed (Clearing)	-37%	-20%	-23%	-21%	-10%	-6%	0%	0%	0%	12%
	Placed (Firm)	-5%	-5%	-10%	-4%	-2%	1%	3%	1%	0%	-2%
	Placed (Insurance)	4%	12%	-15%	-7%	5%	11%	13%	7%	0%	1%
	Placed (Other)	-1%	8%	-15%	2%	-1%	-5%	7%	6%	0%	-1%

Note: The percentage change is not recorded in the above table for groups with fewer than 10 placed applicants in that cycle or in the 2018 cycle.

A.9 Main scheme applicants placed through adjustment: 7 days after A level results day

Placed through adjustment: difference between cycle and 2018 cycle

Placed (Adjustment)



Note: The percentage change is not plotted in the above chart for groups with fewer than 30 placed applicants in any one cycle.

A.10 Main scheme applicants placed through adjustment: 7 days after A level results day

Placed through adjustment: applicants at 7 days after A level results day

Applicant type	Status	2010	2011	2012	2013	2014	2015	2016	2017	2018	2019
Main scheme	Placed (Adjustment)	380	560	1,350	1,230	1,190	1,170	920	1,060	910	600

A.11 Main scheme applicants placed through adjustment: 7 days after A level results day

Placed through adjustment: difference between cycle and 2018 cycle

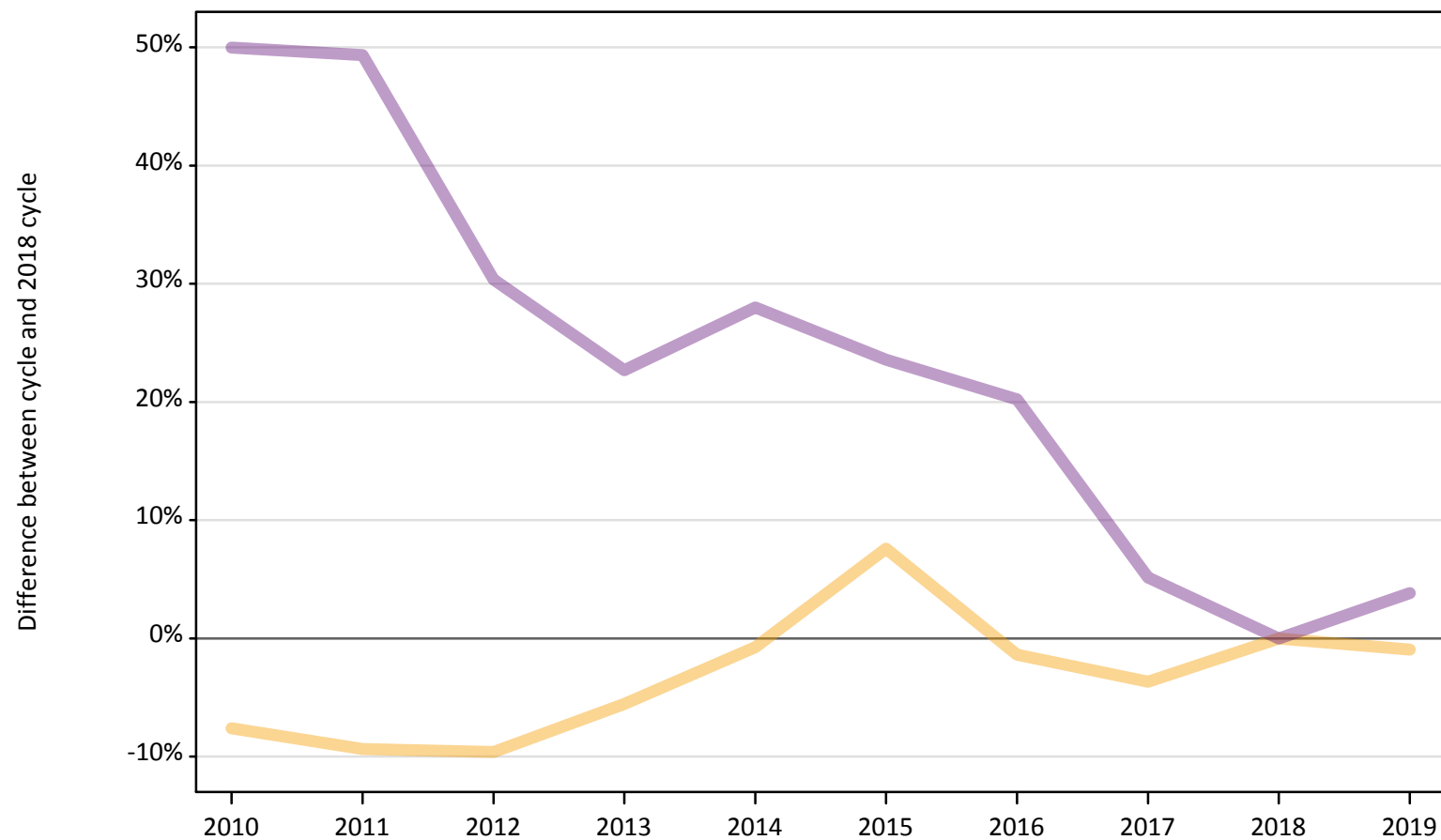
Applicant type	Status	2010	2011	2012	2013	2014	2015	2016	2017	2018	2019
Main scheme	Placed (Adjustment)	-58%	-38%	49%	36%	31%	29%	1%	17%	0%	-33%

Note: The percentage change is not recorded in the above table for groups with fewer than 10 placed applicants in that cycle or in the 2018 cycle.

A.12 Main scheme applicants not currently placed from all domiciles: 7 days after A level results day

Applicants in unplaced states: difference between cycle and 2018 cycle

— Holding offer
— Free to be placed in Clearing



Note: The percentage change is not plotted in the above chart for groups with fewer than 30 unplaced applicants in any one cycle.

A.13 Main scheme applicants not currently placed from all domiciles: 7 days after A level results day

Applicants in unplaced states: applicants at 7 days after A level results day

Applicant type	Status	2010	2011	2012	2013	2014	2015	2016	2017	2018	2019
Main scheme	Holding offer	46,410	45,540	45,410	47,450	49,860	54,050	49,540	48,390	50,240	49,760
	Free to be placed in Clearing	172,730	171,980	150,130	141,280	147,390	142,310	138,450	121,090	115,160	119,580

A.14 Main scheme applicants not currently placed from all domiciles: 7 days after A level results day

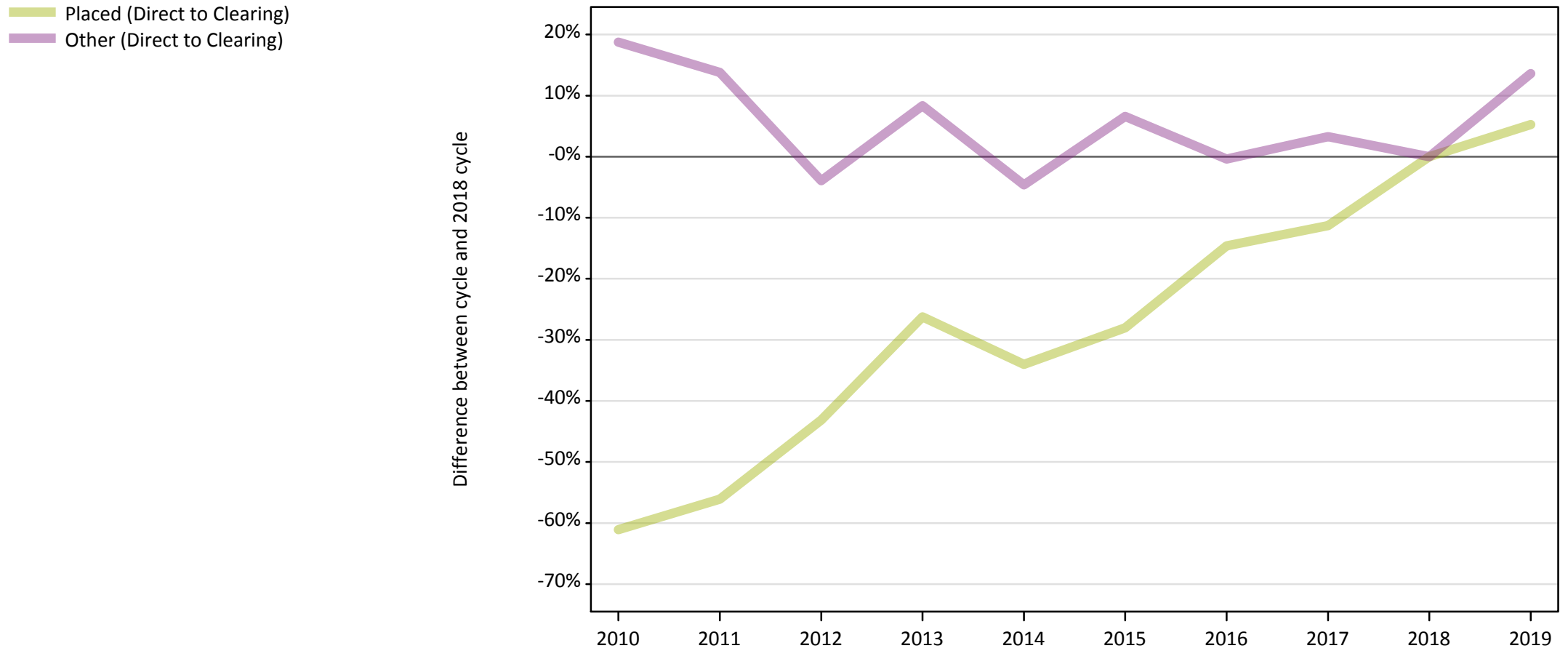
Applicants in unplaced states: difference between cycle and 2018 cycle

Applicant type	Status	2010	2011	2012	2013	2014	2015	2016	2017	2018	2019
Main scheme	Holding offer	-8%	-9%	-10%	-6%	-1%	8%	-1%	-4%	0%	-1%
	Free to be placed in Clearing	50%	49%	30%	23%	28%	24%	20%	5%	0%	4%

Note: The percentage change is not recorded in the above table for groups with fewer than 10 unplaced applicants in that cycle or in the 2018 cycle.

A.15 Direct to Clearing applicants from all domiciles: 7 days after A level results day

Direct to Clearing: difference between cycle and 2018 cycle



Note: The percentage change is not plotted in the above chart for groups with fewer than 30 placed applicants in any one cycle.

A.16 Direct to Clearing applicants from all domiciles: 7 days after A level results day

Direct to Clearing 7 days after A level results day

Applicant type	Status	2010	2011	2012	2013	2014	2015	2016	2017	2018	2019
Direct to Clearing	Placed (Direct to Clearing)	3,350	3,780	4,890	6,340	5,680	6,190	7,350	7,630	8,600	9,060
	Other (Direct to Clearing)	9,190	8,810	7,440	8,390	7,380	8,250	7,710	7,990	7,740	8,790

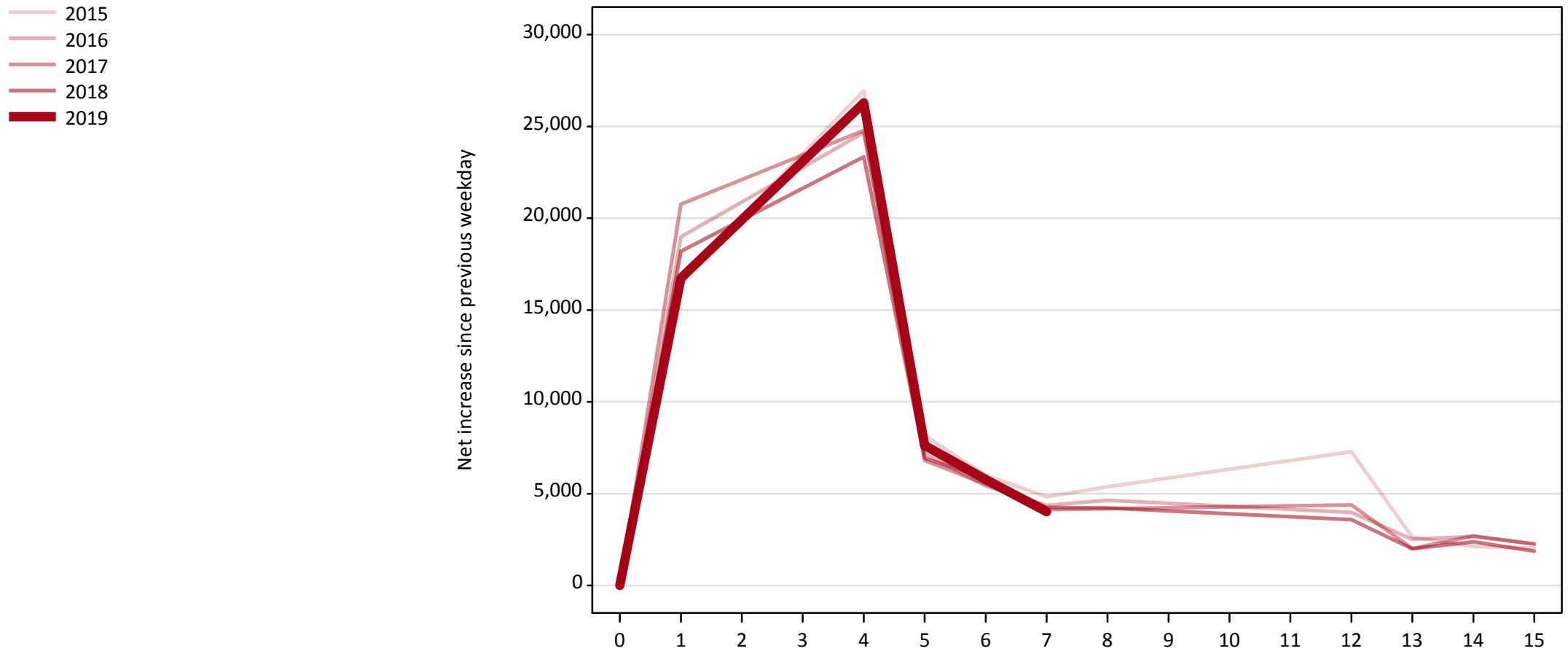
A.17 Direct to Clearing applicants from all domiciles: 7 days after A level results day

Direct to Clearing: difference between cycle and 2018 cycle

Applicant type	Status	2010	2011	2012	2013	2014	2015	2016	2017	2018	2019
Direct to Clearing	Placed (Direct to Clearing)	-61%	-56%	-43%	-26%	-34%	-28%	-15%	-11%	0%	5%
	Other (Direct to Clearing)	19%	14%	-4%	8%	-5%	7%	-0%	3%	0%	14%

Note: The percentage change is not recorded in the above table for groups with fewer than 10 placed applicants in that cycle or in the 2018 cycle.

A.18 All Placed: Daily net change (from all domiciles)
Net increase since previous weekday (2019 cycle up to 7 days after A level results day)

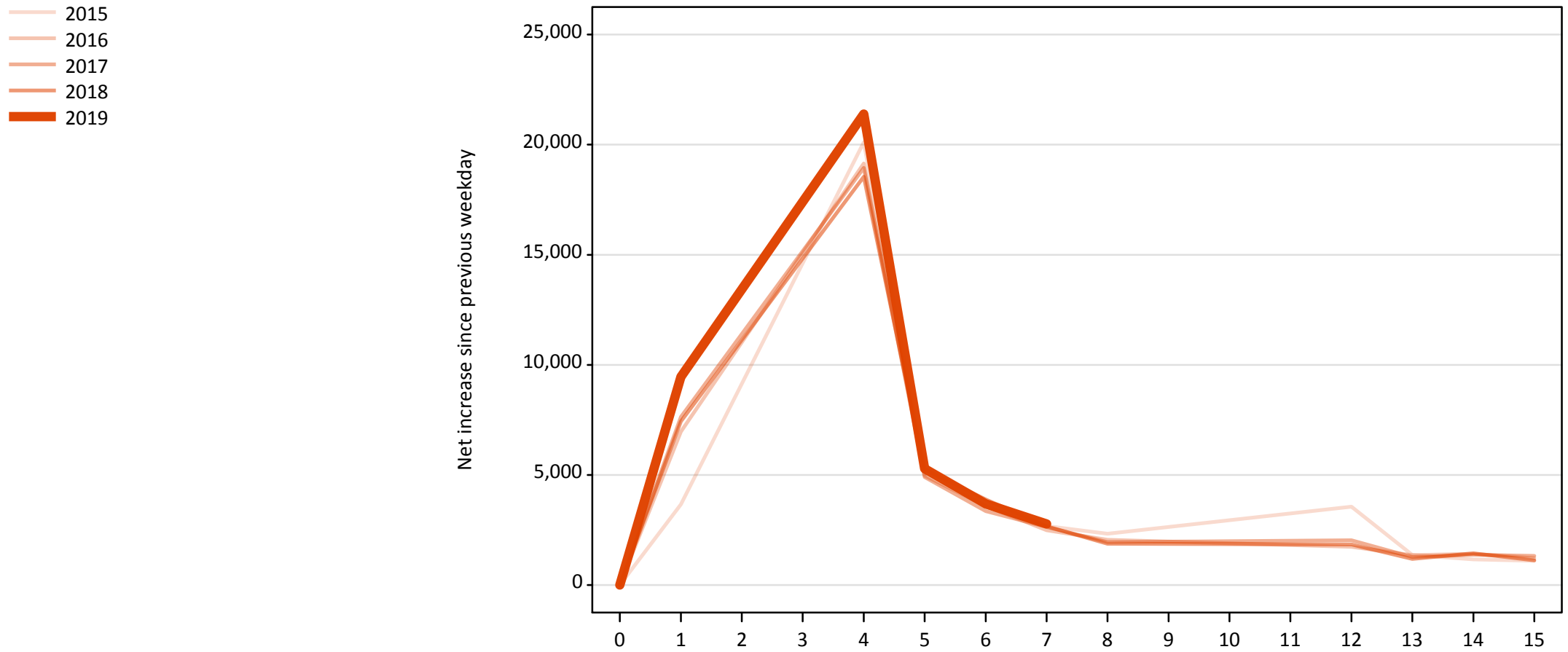


A.19 All Placed: Daily net change (from all domiciles)

Net increase since previous weekday (2019 cycle up to 7 days after A level results day)

Applicant status, days since A level results day		2015	2016	2017	2018	2019
All Placed	0	0	0	0	0	0
	1	16,680	18,990	20,770	18,200	16,740
	4	26,940	24,670	24,790	23,340	26,280
	5	8,160	7,170	6,810	6,940	7,620
	6	6,000	5,410	5,510	5,820	5,770
	7	4,830	4,350	4,140	4,240	4,010
	8	5,370	4,640	4,190	4,220	
	12	7,280	3,980	4,380	3,590	
	13	2,630	2,510	2,010	2,000	
	14	2,120	2,660	2,700	2,370	
	15	2,030	2,250	2,260	1,870	

A.20 Placed through Clearing only: Daily net change (from all domiciles)
Net increase since previous weekday (2019 cycle up to 7 days after A level results day)



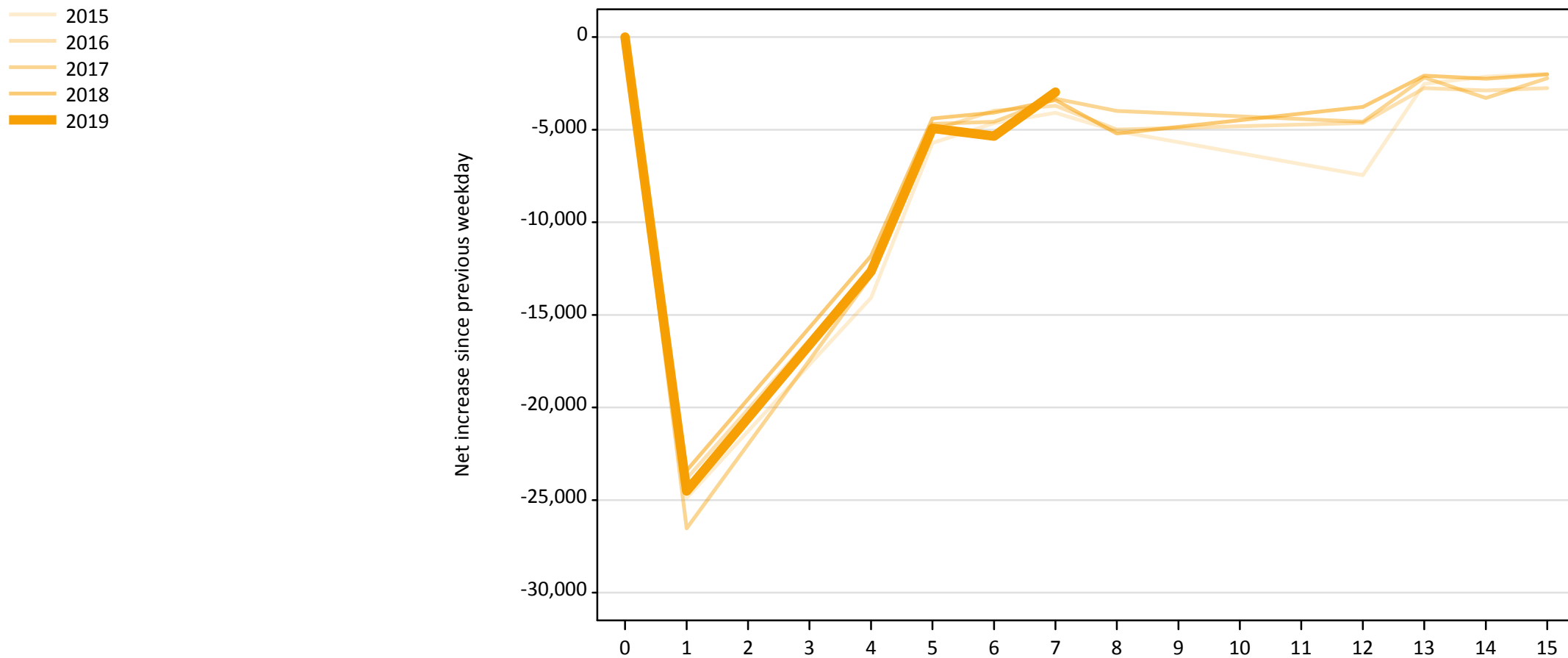
A.21 Placed through Clearing only: Daily net change (from all domiciles)

Net increase since previous weekday (2019 cycle up to 7 days after A level results day)

Applicant status, days since A level results day		2015	2016	2017	2018	2019
Placed through Clearing only	0	0	0	0	0	0
	1	3,660	6,970	7,640	7,440	9,460
	4	20,110	19,140	18,940	18,550	21,390
	5	5,290	4,960	4,910	5,250	5,280
	6	3,560	3,590	3,360	3,890	3,680
	7	2,680	2,480	2,640	2,660	2,770
	8	2,330	2,050	1,950	1,880	
	12	3,550	1,740	2,030	1,840	
	13	1,370	1,350	1,270	1,190	
	14	1,160	1,420	1,370	1,440	
	15	1,100	1,210	1,320	1,130	

A.22 Holding Offer: Daily net change (from all domiciles)

Net increase since previous weekday (2019 cycle up to 7 days after A level results day)

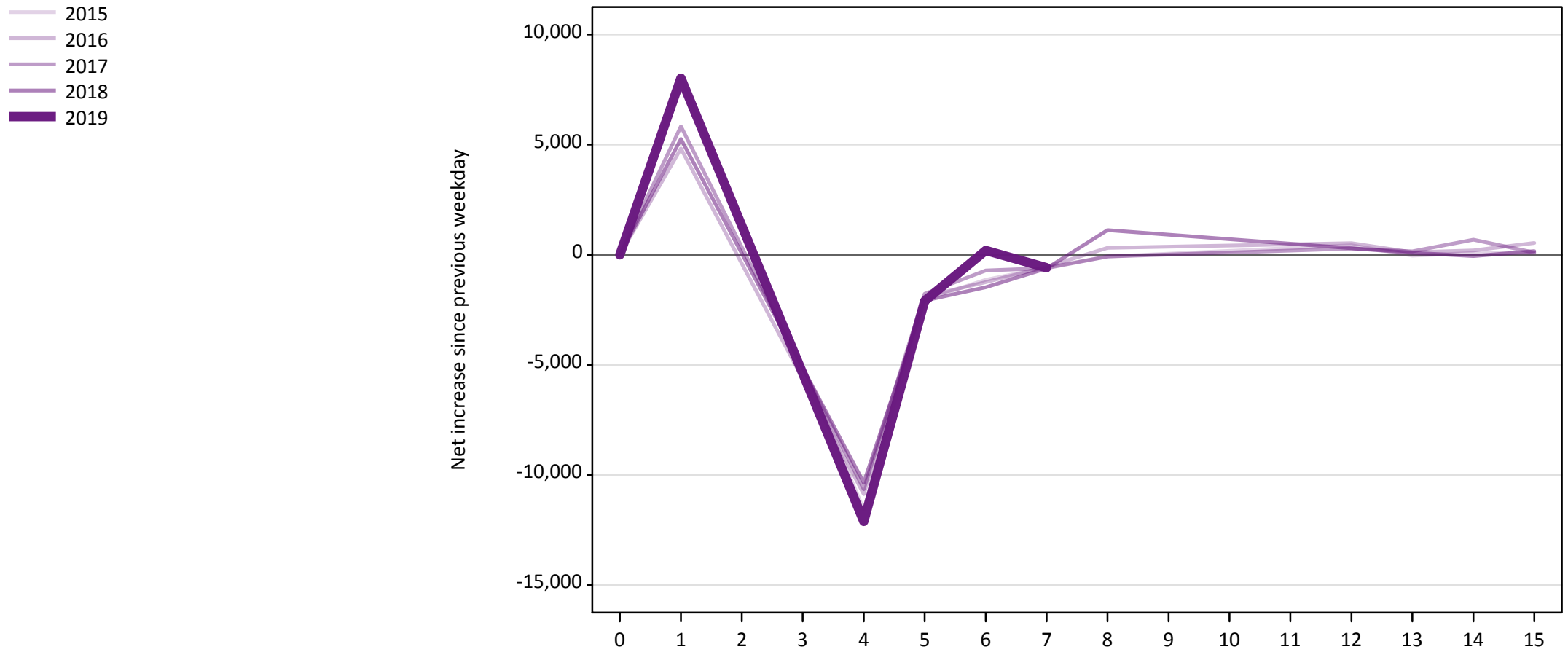


A.23 Holding Offer: Daily net change (from all domiciles)

Net increase since previous weekday (2019 cycle up to 7 days after A level results day)

Applicant status, days since A level results day		2015	2016	2017	2018	2019
Holding Offer	0	0	0	0	0	0
	1	-24,880	-23,840	-26,530	-23,410	-24,510
	4	-14,080	-12,600	-12,900	-11,810	-12,650
	5	-5,720	-5,030	-4,680	-4,390	-4,930
	6	-4,650	-3,970	-4,580	-4,080	-5,340
	7	-4,090	-3,700	-3,330	-3,400	-2,970
	8	-5,080	-4,990	-3,990	-5,210	
	12	-7,460	-4,640	-4,580	-3,770	
	13	-2,520	-2,760	-2,180	-2,080	
	14	-2,130	-2,880	-3,280	-2,250	
	15	-1,980	-2,760	-2,230	-2,020	

A.24 Free to be placed in Clearing: Daily net change (from all domiciles)
Net increase since previous weekday (2019 cycle up to 7 days after A level results day)



A.25 Free to be placed in Clearing: Daily net change (from all domiciles)

Net increase since previous weekday (2019 cycle up to 7 days after A level results day)

Applicant status, days since A level results day		2015	2016	2017	2018	2019
Free to be placed in Clearing	0	0	0	0	0	0
	1	8,010	4,820	5,830	5,260	8,020
	4	-11,570	-10,870	-10,650	-10,350	-12,110
	5	-2,040	-1,900	-1,780	-2,080	-2,110
	6	-1,130	-1,250	-710	-1,480	200
	7	-570	-540	-610	-620	-590
	8	-80	310	-80	1,120	
	12	430	530	280	290	
	13	-40	120	150	90	
	14	80	200	680	-60	
	15	60	530	100	160	