

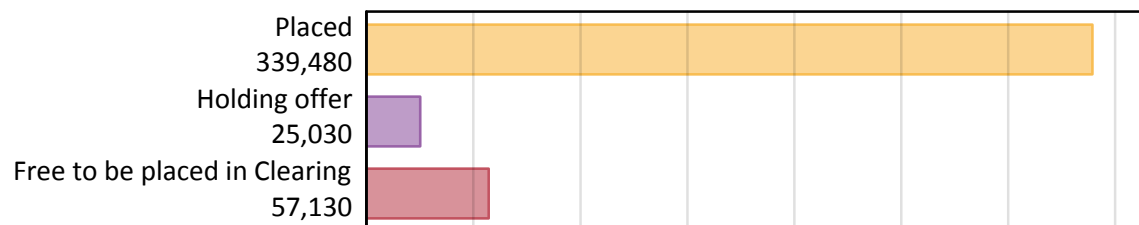
# Daily Clearing Analysis: Overview

Analysis at 00:05 on Thursday 22 August 2019 (7 days after A level results day)

## A.1 Applicants by type and status from England, 2019 cycle

Applicant type	Status	2019
Main scheme	Placed (Clearing)	34,380
	Placed (Adjustment)	500
	Placed (Firm)	263,600
	Placed (Insurance)	24,710
	Placed (Other)	8,970
	Holding offer	25,030
	Free to be placed in Clearing	57,130
Direct to Clearing	Placed (Direct to Clearing)	7,320
	Other (Direct to Clearing)	6,720
All applicants	Placed	339,480

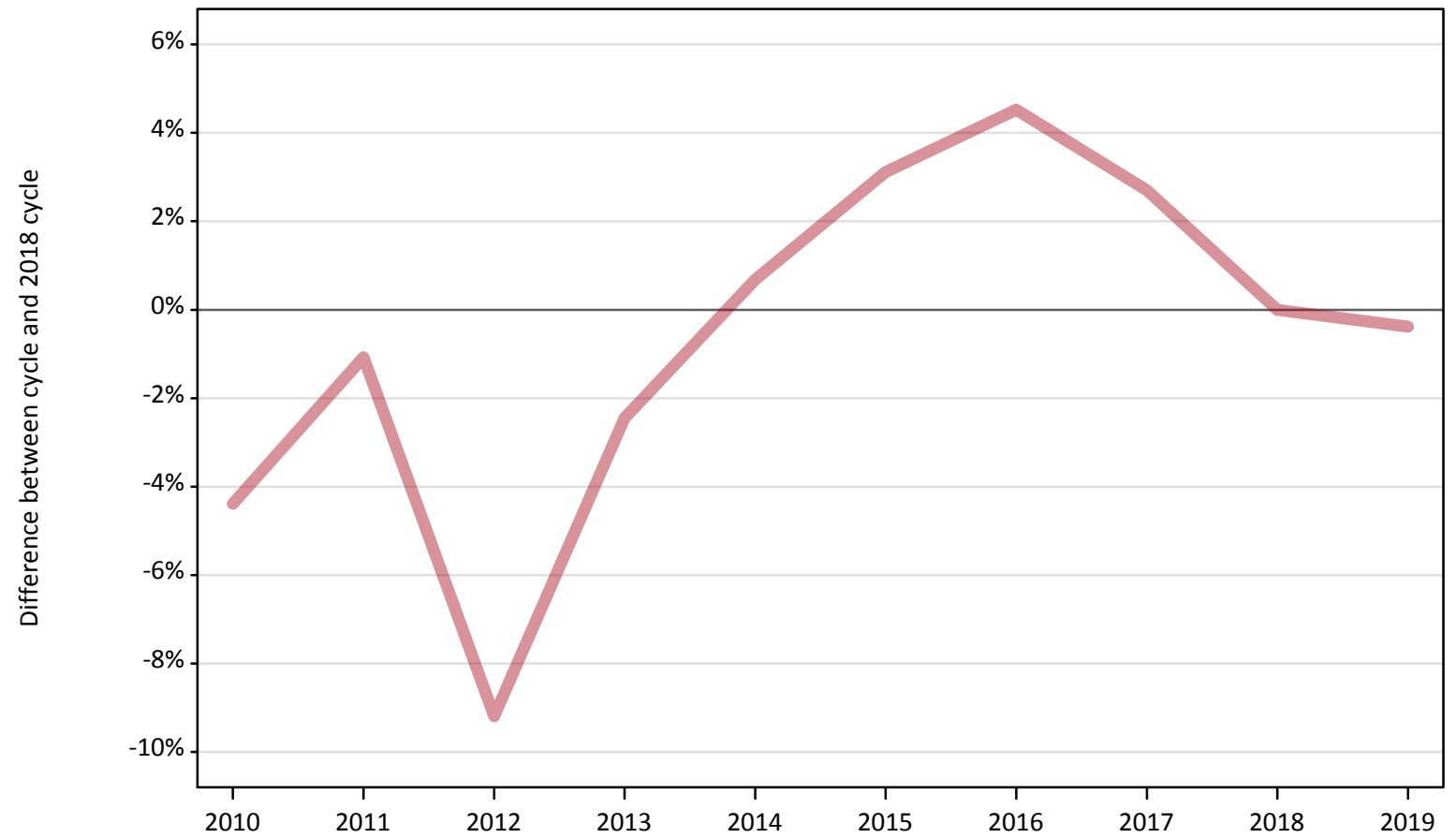
## A.2 Summary of applicants who are placed, holding offers or free to be placed in Clearing ( England )



### A.3 All placed applicants from England: 7 days after A level results day

All placed applicants: difference between cycle and 2018 cycle

Placed



Note: The percentage change is not plotted in the above chart for groups with fewer than 30 placed applicants in any one cycle.

#### A.4 All placed applicants from England: 7 days after A level results day

All placed applicants: applicants at 7 days after A level results day

Applicant type	Status	2010	2011	2012	2013	2014	2015	2016	2017	2018	2019
All applicants	Placed	325,830	337,140	309,450	332,450	343,110	351,400	356,210	350,000	340,790	339,480

#### A.5 All placed applicants from England: 7 days after A level results day

All placed applicants: difference between cycle and 2018 cycle

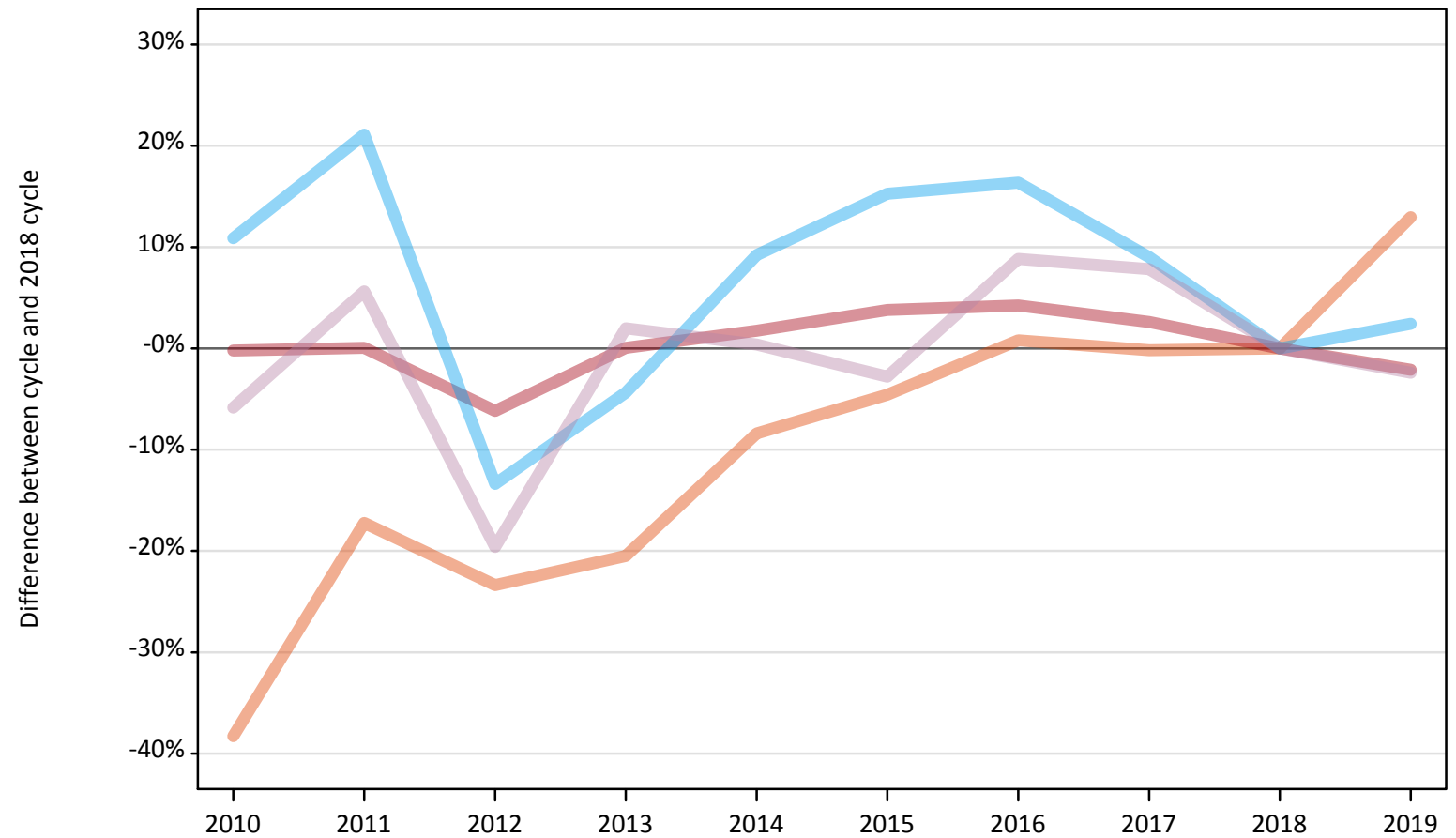
Applicant type	Status	2010	2011	2012	2013	2014	2015	2016	2017	2018	2019
All applicants	Placed	-4%	-1%	-9%	-2%	1%	3%	5%	3%	0%	-0%

Note: The percentage change is not recorded in the above table for groups with fewer than 10 placed applicants in that cycle or in the 2018 cycle.

## A.6 Placed main scheme applicants from England: 7 days after A level results day

All Main scheme placed routes (excluding Adjustment): difference between cycle and 2018 cycle

- Placed (Clearing)
- Placed (Firm)
- Placed (Insurance)
- Placed (Other)



Note: The percentage change is not plotted in the above chart for groups with fewer than 30 placed applicants in any one cycle.

### A.7 Placed main scheme applicants from England: 7 days after A level results day

All Main scheme placed routes (excluding Adjustment): applicants at 7 days after A level results day

Applicant type	Status	2010	2011	2012	2013	2014	2015	2016	2017	2018	2019
Main scheme	Placed (Clearing)	18,780	25,200	23,330	24,200	27,880	29,040	30,680	30,380	30,440	34,380
	Placed (Firm)	268,700	269,410	252,670	269,380	273,920	279,490	280,610	276,260	269,240	263,600
	Placed (Insurance)	26,750	29,210	20,890	23,070	26,340	27,800	28,070	26,300	24,120	24,710
	Placed (Other)	8,650	9,710	7,390	9,370	9,220	8,930	10,000	9,910	9,190	8,970

### A.8 Placed main scheme applicants from England: 7 days after A level results day

All Main scheme placed routes (excluding Adjustment): difference between cycle and 2018 cycle

Applicant type	Status	2010	2011	2012	2013	2014	2015	2016	2017	2018	2019
Main scheme	Placed (Clearing)	-38%	-17%	-23%	-21%	-8%	-5%	1%	-0%	0%	13%
	Placed (Firm)	-0%	0%	-6%	0%	2%	4%	4%	3%	0%	-2%
	Placed (Insurance)	11%	21%	-13%	-4%	9%	15%	16%	9%	0%	2%
	Placed (Other)	-6%	6%	-20%	2%	0%	-3%	9%	8%	0%	-2%

Note: The percentage change is not recorded in the above table for groups with fewer than 10 placed applicants in that cycle or in the 2018 cycle.

### A.9 Main scheme applicants placed through adjustment: 7 days after A level results day

Placed through adjustment: difference between cycle and 2018 cycle

Placed (Adjustment)



Note: The percentage change is not plotted in the above chart for groups with fewer than 30 placed applicants in any one cycle.

### A.10 Main scheme applicants placed through adjustment: 7 days after A level results day

Placed through adjustment: applicants at 7 days after A level results day

Applicant type	Status	2010	2011	2012	2013	2014	2015	2016	2017	2018	2019
Main scheme	Placed (Adjustment)	290	470	1,180	1,070	990	990	760	900	780	500

### A.11 Main scheme applicants placed through adjustment: 7 days after A level results day

Placed through adjustment: difference between cycle and 2018 cycle

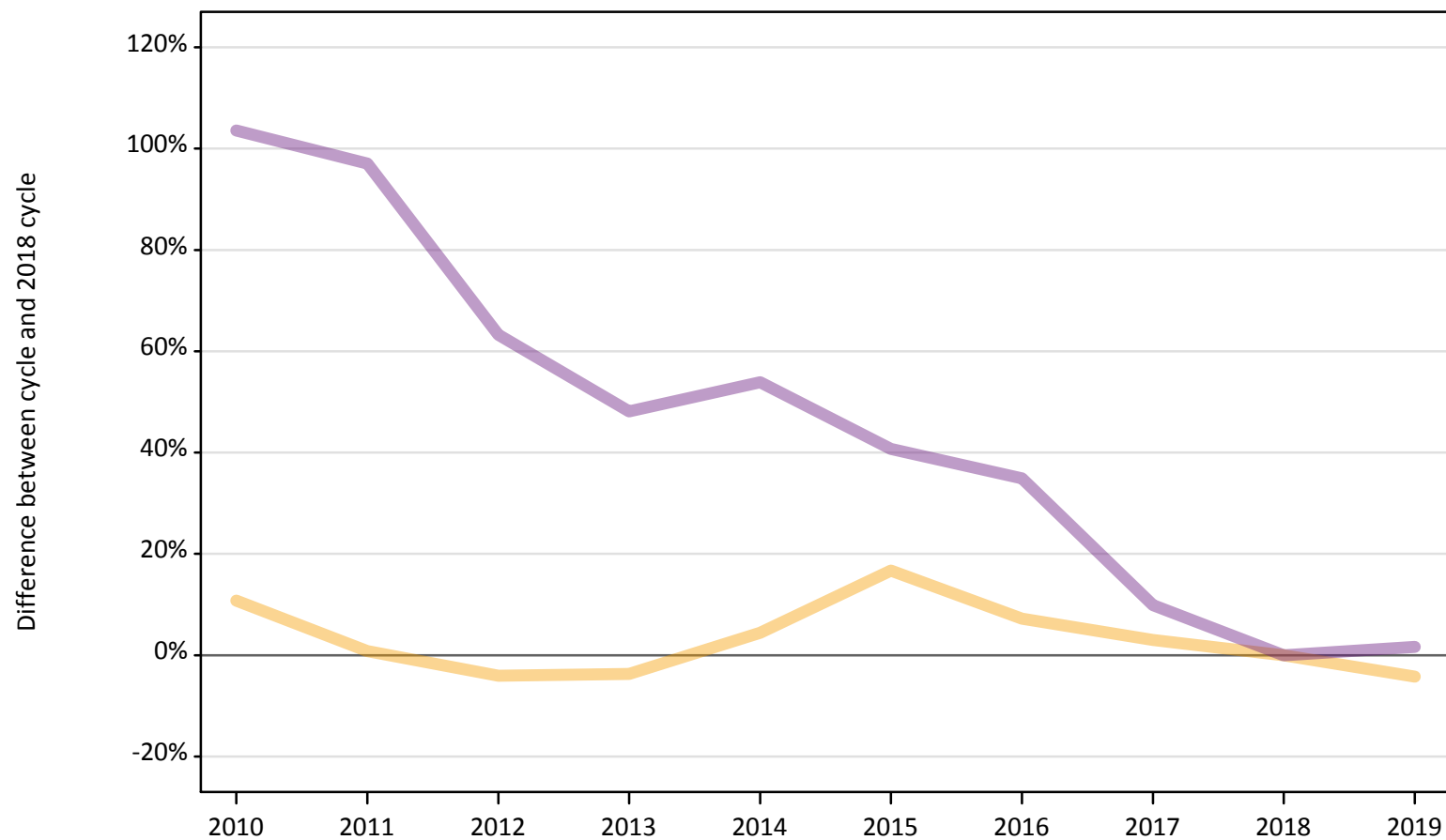
Applicant type	Status	2010	2011	2012	2013	2014	2015	2016	2017	2018	2019
Main scheme	Placed (Adjustment)	-63%	-39%	52%	38%	28%	28%	-2%	16%	0%	-36%

Note: The percentage change is not recorded in the above table for groups with fewer than 10 placed applicants in that cycle or in the 2018 cycle.

## A.12 Main scheme applicants not currently placed from England: 7 days after A level results day

Applicants in unplaced states: difference between cycle and 2018 cycle

— Holding offer  
— Free to be placed in Clearing



Note: The percentage change is not plotted in the above chart for groups with fewer than 30 unplaced applicants in any one cycle.



### A.13 Main scheme applicants not currently placed from England: 7 days after A level results day

Applicants in unplaced states: applicants at 7 days after A level results day

Applicant type	Status	2010	2011	2012	2013	2014	2015	2016	2017	2018	2019
Main scheme	Holding offer	28,950	26,350	25,080	25,170	27,290	30,510	28,020	26,920	26,140	25,030
	Free to be placed in Clearing	114,440	110,790	91,780	83,290	86,520	79,090	75,820	61,770	56,210	57,130

### A.14 Main scheme applicants not currently placed from England: 7 days after A level results day

Applicants in unplaced states: difference between cycle and 2018 cycle

Applicant type	Status	2010	2011	2012	2013	2014	2015	2016	2017	2018	2019
Main scheme	Holding offer	11%	1%	-4%	-4%	4%	17%	7%	3%	0%	-4%
	Free to be placed in Clearing	104%	97%	63%	48%	54%	41%	35%	10%	0%	2%

Note: The percentage change is not recorded in the above table for groups with fewer than 10 unplaced applicants in that cycle or in the 2018 cycle.

### A.15 Direct to Clearing applicants from England: 7 days after A level results day

Direct to Clearing: difference between cycle and 2018 cycle



Note: The percentage change is not plotted in the above chart for groups with fewer than 30 placed applicants in any one cycle.

### A.16 Direct to Clearing applicants from England: 7 days after A level results day

Direct to Clearing 7 days after A level results day

Applicant type	Status	2010	2011	2012	2013	2014	2015	2016	2017	2018	2019
Direct to Clearing	Placed (Direct to Clearing)	2,660	3,140	4,000	5,370	4,760	5,150	6,090	6,260	7,040	7,320
	Other (Direct to Clearing)	7,060	6,960	5,730	6,570	5,740	6,380	6,050	6,180	5,890	6,720

### A.17 Direct to Clearing applicants from England: 7 days after A level results day

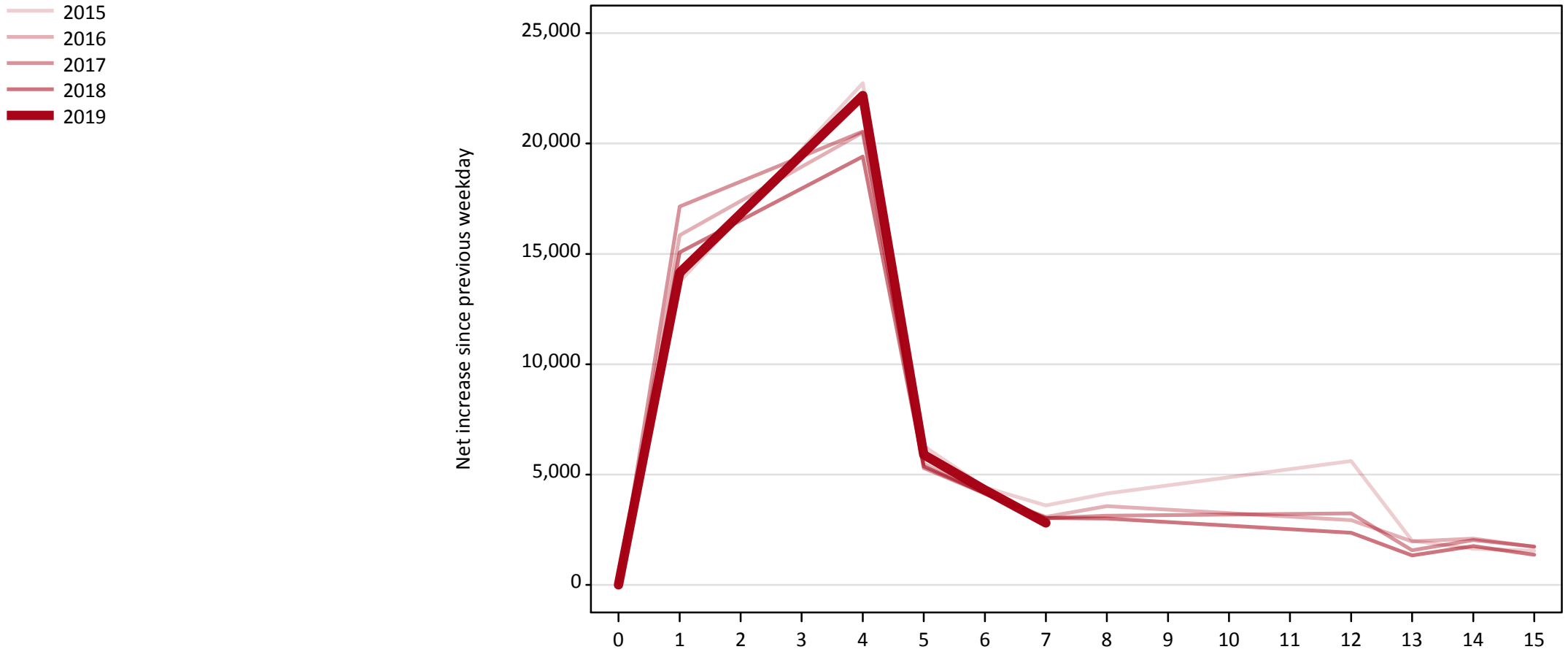
Direct to Clearing: difference between cycle and 2018 cycle

Applicant type	Status	2010	2011	2012	2013	2014	2015	2016	2017	2018	2019
Direct to Clearing	Placed (Direct to Clearing)	-62%	-55%	-43%	-24%	-32%	-27%	-13%	-11%	0%	4%
	Other (Direct to Clearing)	20%	18%	-3%	11%	-3%	8%	3%	5%	0%	14%

Note: The percentage change is not recorded in the above table for groups with fewer than 10 placed applicants in that cycle or in the 2018 cycle.

### A.18 All Placed: Daily net change (from England)

Net increase since previous weekday (2019 cycle up to 7 days after A level results day)

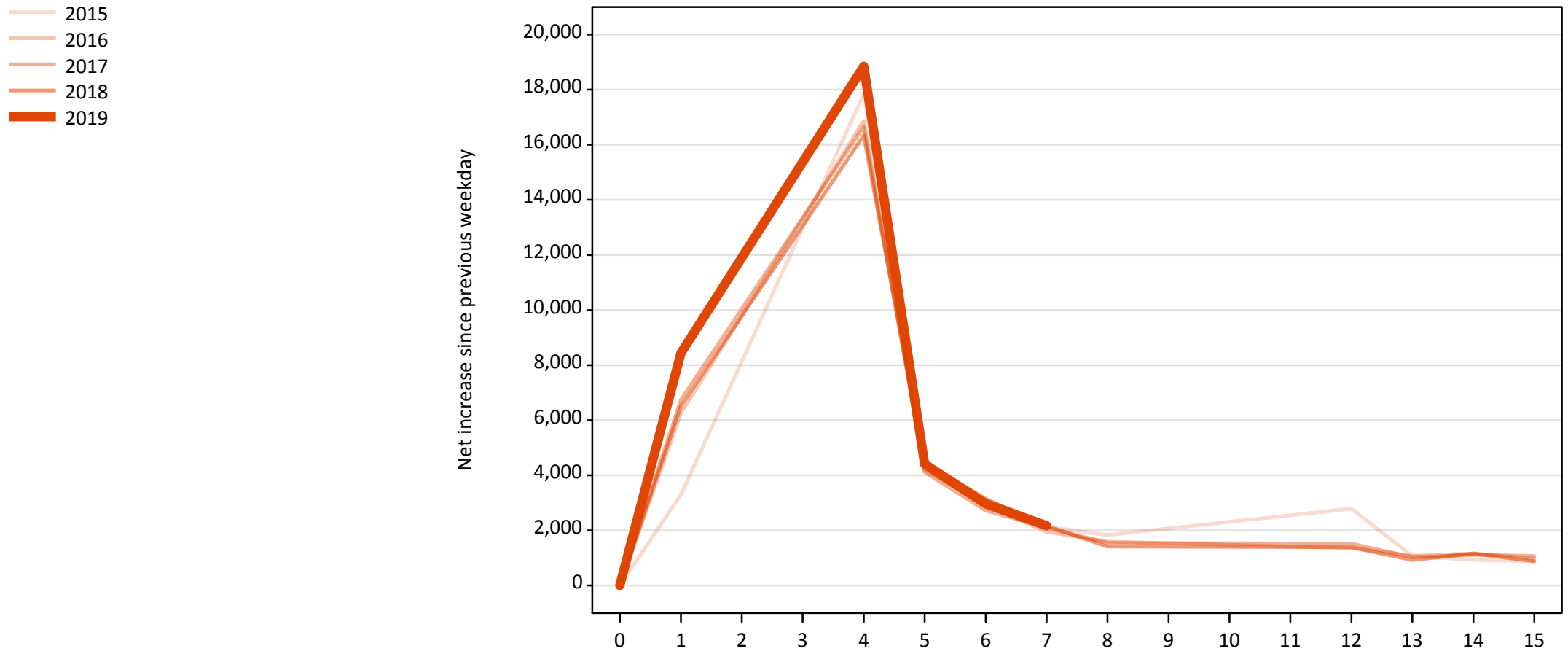


**A.19 All Placed: Daily net change (from England)**

Net increase since previous weekday (2019 cycle up to 7 days after A level results day)

Applicant status, days since A level results day		2015	2016	2017	2018	2019
All Placed	0	0	0	0	0	0
	1	13,730	15,840	17,150	15,070	14,150
	4	22,730	20,500	20,540	19,410	22,170
	5	6,300	5,500	5,300	5,370	5,900
	6	4,410	4,120	4,140	4,150	4,300
	7	3,600	3,080	3,030	3,030	2,800
	8	4,140	3,570	3,130	3,010	
	12	5,610	2,940	3,240	2,360	
	13	2,000	1,970	1,560	1,340	
	14	1,640	2,100	2,030	1,760	
	15	1,540	1,730	1,740	1,360	

**A.20 Placed through Clearing only: Daily net change (from England)**  
Net increase since previous weekday (2019 cycle up to 7 days after A level results day)



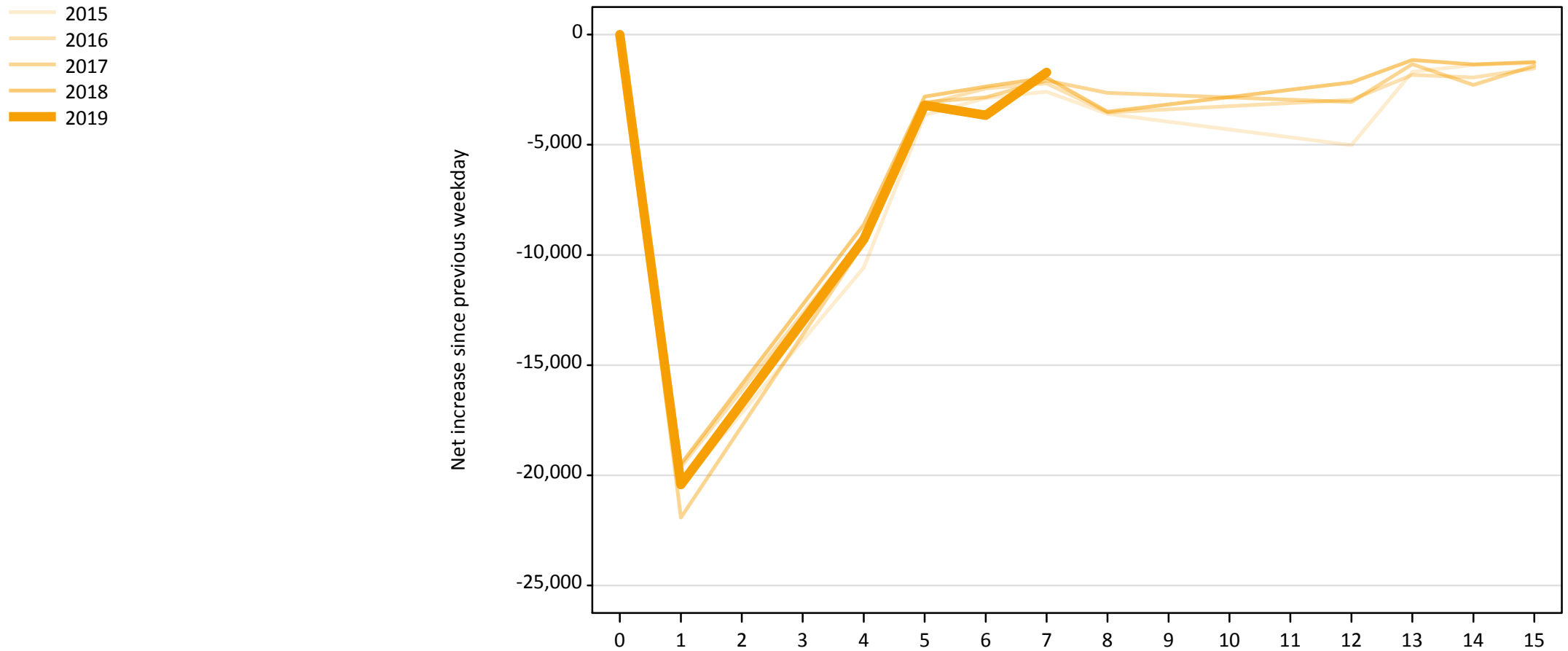
### A.21 Placed through Clearing only: Daily net change (from England)

Net increase since previous weekday (2019 cycle up to 7 days after A level results day)

Applicant status, days since A level results day		2015	2016	2017	2018	2019
Placed through Clearing only	0	0	0	0	0	0
	1	3,300	6,260	6,740	6,510	8,440
	4	17,850	16,870	16,660	16,340	18,850
	5	4,470	4,190	4,120	4,470	4,410
	6	2,830	2,940	2,720	3,150	2,970
	7	2,140	1,950	2,100	2,160	2,170
	8	1,830	1,590	1,540	1,410	
	12	2,790	1,360	1,510	1,390	
	13	1,060	1,080	1,020	920	
	14	930	1,160	1,120	1,160	
	15	880	970	1,060	880	

## A.22 Holding Offer: Daily net change (from England)

Net increase since previous weekday (2019 cycle up to 7 days after A level results day)



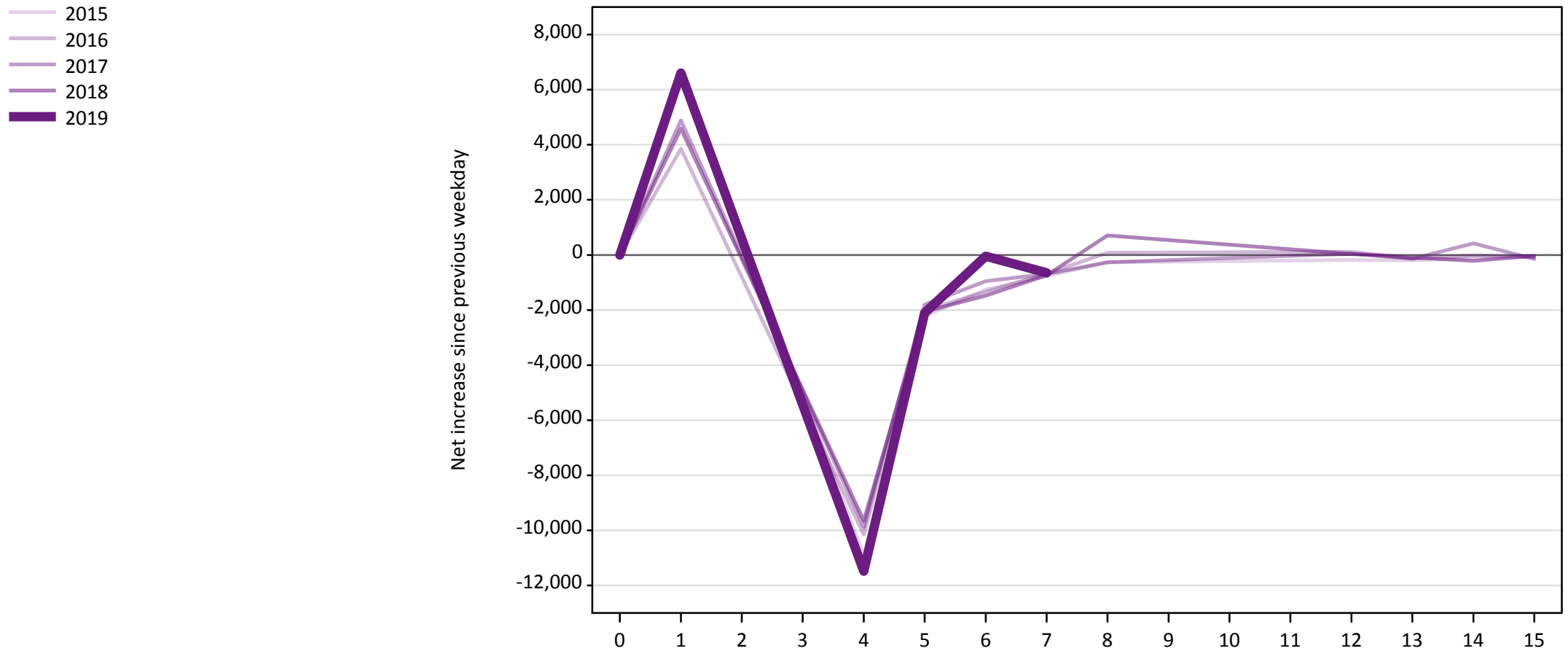


### A.23 Holding Offer: Daily net change (from England)

Net increase since previous weekday (2019 cycle up to 7 days after A level results day)

Applicant status, days since A level results day		2015	2016	2017	2018	2019
Holding Offer	0	0	0	0	0	0
	1	-20,460	-19,620	-21,920	-19,500	-20,430
	4	-10,580	-9,160	-9,470	-8,630	-9,300
	5	-3,660	-3,160	-3,060	-2,820	-3,210
	6	-2,870	-2,450	-2,840	-2,360	-3,660
	7	-2,590	-2,210	-2,080	-1,960	-1,720
	8	-3,590	-3,540	-2,650	-3,510	
	12	-5,010	-2,970	-3,060	-2,170	
	13	-1,690	-1,830	-1,340	-1,160	
	14	-1,370	-1,950	-2,290	-1,360	
	15	-1,280	-1,530	-1,420	-1,240	

**A.24 Free to be placed in Clearing: Daily net change (from England)**  
Net increase since previous weekday (2019 cycle up to 7 days after A level results day)



**A.25 Free to be placed in Clearing: Daily net change (from England)**

Net increase since previous weekday (2019 cycle up to 7 days after A level results day)

Applicant status, days since A level results day		2015	2016	2017	2018	2019
Free to be placed in Clearing	0	0	0	0	0	0
	1	6,690	3,860	4,890	4,590	6,600
	4	-10,920	-10,160	-9,880	-9,640	-11,480
	5	-2,220	-2,000	-1,800	-2,050	-2,110
	6	-1,260	-1,340	-950	-1,480	-40
	7	-770	-680	-690	-740	-640
	8	-270	80	-270	710	
	12	-190	110	50	40	
	13	-200	-130	-140	-90	
	14	-120	-20	420	-220	
	15	-70	-70	-150	-30	